

Row  
File  
#2

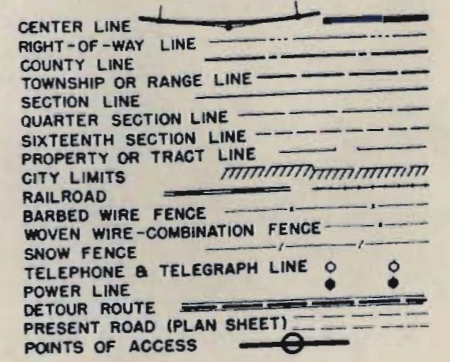
# COLORADO STATE HIGHWAY DEPARTMENT

## PLAN AND PROFILE OF PROPOSED FEDERAL AID PROJECT NO. F.I.002-2(5) STATE HIGHWAY NO. 1 25 EL PASO COUNTY

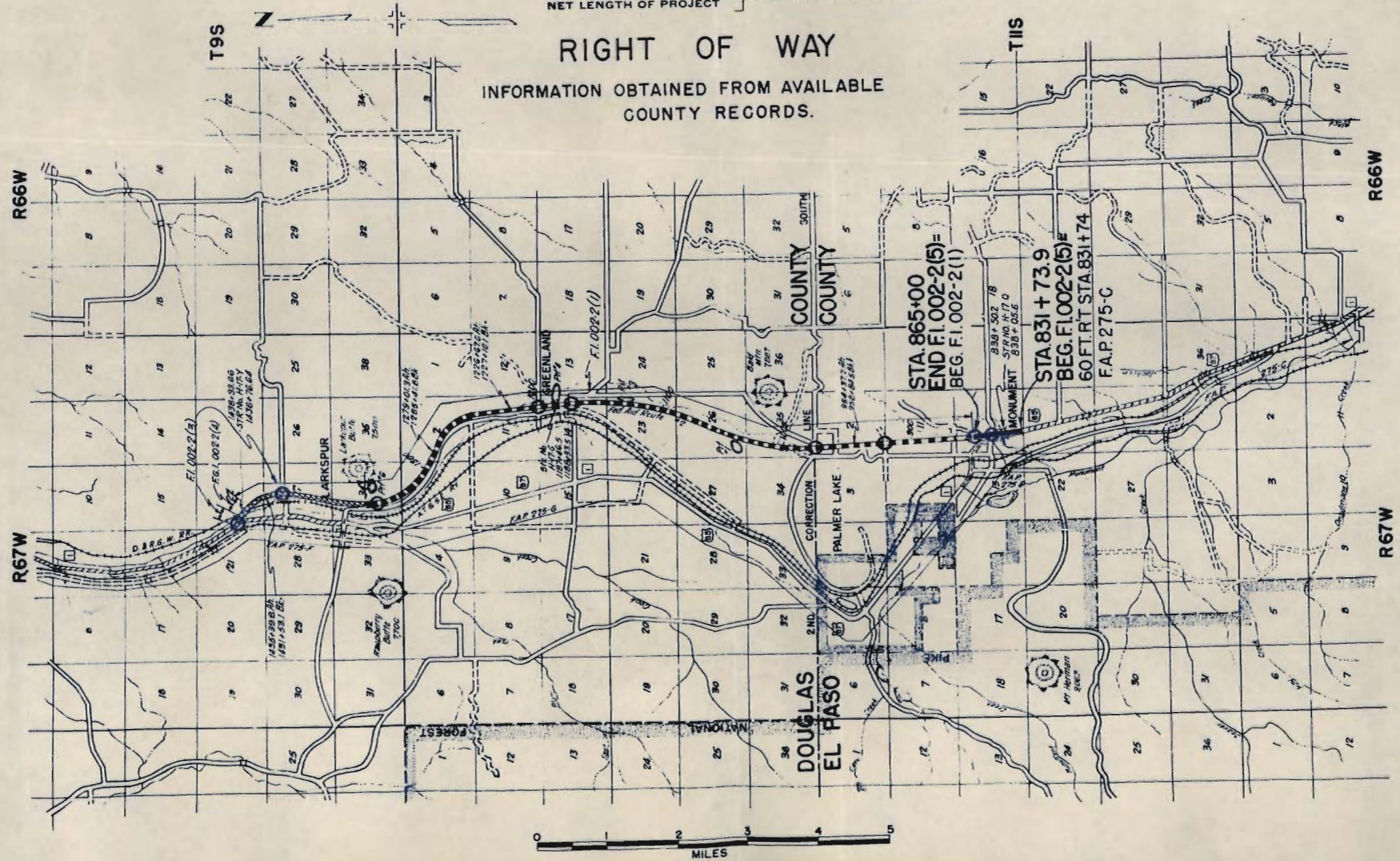
### INDEX OF SHEETS

- SHEET NO. 1 TITLE SHEET.
- 2 TABULATION OF PROPERTIES.
- 3-7 PLAN AND PROFILE SHEETS SHOWING RIGHT OF WAY.

### CONVENTIONAL SIGNS



SCALES OF ORIGINAL TRACINGS  
ON PLAN, 1 IN. = 100 FT.  
ON PROFILE 1 IN. = 100 FT. HORIZONTAL  
1 IN. = 10 FT. VERTICAL  
GRADE LINE ON PROFILE IS SHOWN AS GRADE OF FINISHED ROAD  
GROSS LENGTH OF PROJECT 3326.1 FEET = 0.629 MILES  
NET LENGTH OF PROJECT



### RIGHT OF WAY

INFORMATION OBTAINED FROM AVAILABLE COUNTY RECORDS.

FILE COPY  
DO NOT REMOVE

# R.O.W. TABULATION OF PROPERTIES IN EL PASO COUNTY

S.H. No. 1

PROJ. F.I. 002-2(5)

FED. ROAD DIST. NO.	STATE	PROJ. NO.	SHEET NO.	TOTAL SHEETS
3	COLO.	F.I. 002-2(5)	2	

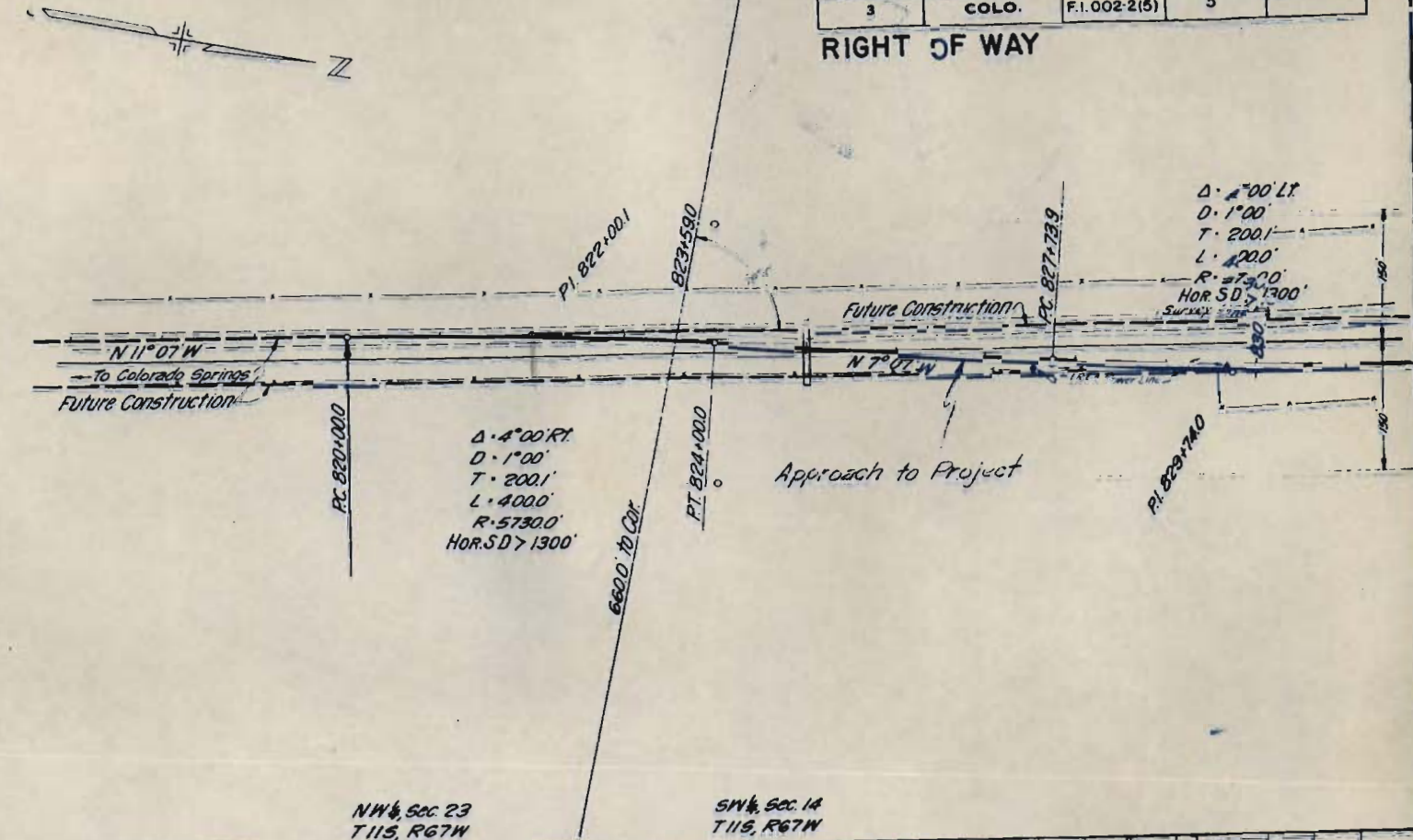
RIGHT OF WAY

Rev. 3-4-49, R.D.C.  
 Rev. 3-25-49, T.L.K.  
 Rev. 4-26-49, S.W.Z.  
 Rev. 5-12-49, S.W.Z.  
 Rev. 5-17-49, S.W.Z.  
 Rev. 6-2-49, S.W.Z.  
 Rev. 5-18-50, R.D.W.  
 Rev. 6-1-50, R.D.W.

PARCEL NO.	OWNER	ADDRESS	LOCATION	AREA IN ACRES		REMARKS	NO.
				TOTAL LAND IN TRACT	TO BE ACQUIRED		
1	WILLIAM E. HIGBY	MONUMENT, COLORADO	T.11 S., R.67W, 6TH P.M. S.W. 1/4 Sec.14	1.195	0.398		
2	WILLIAM E. HIGBY	MONUMENT, COLORADO	Mt.V.Subd. S.W.1/4 Sec.14	0.606	0.606		
3Rev.	CHESTER A. PORTER	MONUMENT, COLORADO	Mt.V.Subd. S.W.1/4 Sec.14	0.190	0.190		
4	OMITTED						
5	STATE OF COLORADO		N.W.1/4 Sec.14	2.829	2.829	To be abandoned.	
6	JOHN W. CHISTIAN	MONUMENT, COLORADO	W. 1/2 Sec.14	0.023	0.023		
8	CHESTER A. PORTER	MONUMENT, COLORADO	W.1/2 Sec.14	0.041	0.041		
9	JOHN W. CHRISTIAN	MONUMENT, COLORADO	W.1/2 Sec.14	0.030	0.030		
8A	STATE OF COLORADO		W.1/2 Sec.14	0.041	0.041	To be exchanged for equal area.	
9A	STATE OF COLORADO		W.1/2 Sec.14	0.030	0.030	To be exchanged for equal area.	

FED. ROAD DIST. NO.	STATE	PROJ. NO.	SHEET NO.	TOTAL SHEETS
3	COLO.	F.1.002-2(5)	3	

RIGHT OF WAY



NW 1/4, SEC 23  
T 11S, R 67W

SW 1/4, SEC 14  
T 11S, R 67W

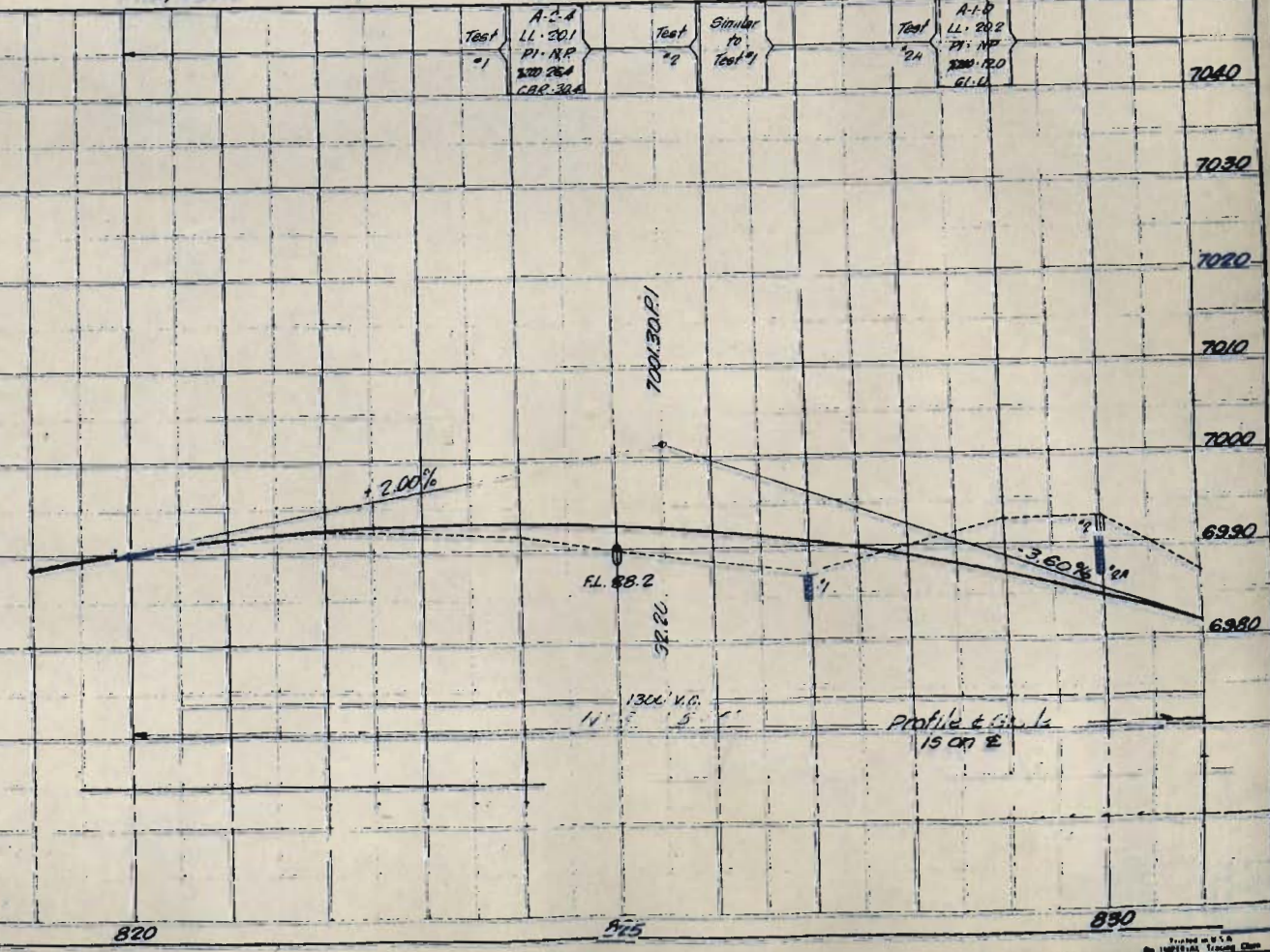
**STRUCTURE NOTES FOR CONC. ARCH STA. 838+05.6 TO 838+50.2 STRUCTURE NO. H-17-Q**

PRESENT STRUCTURE	PROPOSED STRUCTURE
SPAN - 2 SPANS @ 46'-0" 1 SPAN @ 40'-0" CONCRETE GIRDER	POSITION REFERRED TO PRESENT STRUCTURE - 150' LT
CLEAR ROADWAY - 24'-0"	SPAN - 40'-0" SPAN x 122'-0"
CLEAR WATERWAY - 2000' FT	CLEAR ROADWAY - 32'-0"
TYPE OF SUPERSTRUCTURE - CONC. DECK GIRDERS	CLEAR WATERWAY - 440' FT
TYPE OF SUBSTRUCTURE - CONC. PIERS & OPEN CONC. ABUT.	TYPE OF SUPERSTRUCTURE - CONC. ARCH CULVERT
REQUIREMENTS AS TO REMOVAL - AFTER NEW STRUCTURE IS COMPLETED	TYPE OF SUBSTRUCTURE - CONC. ARCH CULVERT
	DETOUR STRUCTURE REQUIREMENTS - NONE
	R.R. SIDING - MONUMENT Haul to Bridge Site - 1/2 MILE

**STREAM DATA**

DRAINAGE AREA IN SQ. MILES -	5 sq. MI.
VELOCITY DURING HIGH WATER -	
ELEVATION OF:	
MAXIMUM HIGH WATER -	LOW WATER - STREAMBED
NORMAL STAGE -	STREAM BED - 6342.2
DRIFT - MEDIUM	
SCOUR - HEAVY	

NEARBY STRUCTURES ON SAME STREAM - 1/4 MILE DOWNSTREAM



EXCAV.  
EMBANK. FACTUR  
EMBANK.  
STA. YD. O.H.  
YD. M. O.H.  
BORROW  
BORROW SOURCE

② WILLIAM E. HIGBY MONUMENT, COLO.

③ CHESTER A. PORTER MONUMENT, COLO.

FED. ROAD DIST. NO.	STATE	PROJ. NO.	SHEET NO.	TOTAL SHEETS
3	COLO.	F1.0022(5)	4	

**RIGHT OF WAY** Rev. 3-7-49 R.D.C.  
 Rev. 3-25-49 T.L.K.  
 (Parcel No. 4 Omitted)  
 Rev. 6-2-45 S.W.Z.  
 Rev. 5-18-50 R.D.W.  
 Rev. 6-1-55 R.D.W.  
 Rev. 4-13-55 S.W.Z.

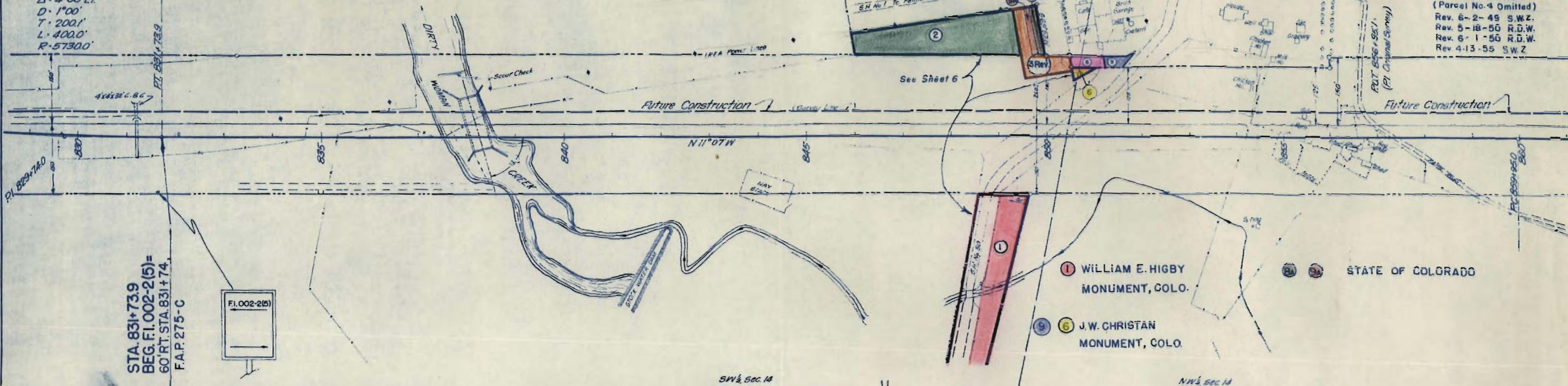
$\Delta = 4^{\circ}00' Lt.$   
 $D = 1^{\circ}00'$   
 $T = 200.1'$   
 $L = 400.0'$   
 $R = 5730.0'$

STA. 831+73.9  
 BEG. F1.002-2(5)  
 60' RT. STA. 831+74.  
 F.A.P. 275-C

F1.002-2(5)

Future Construction

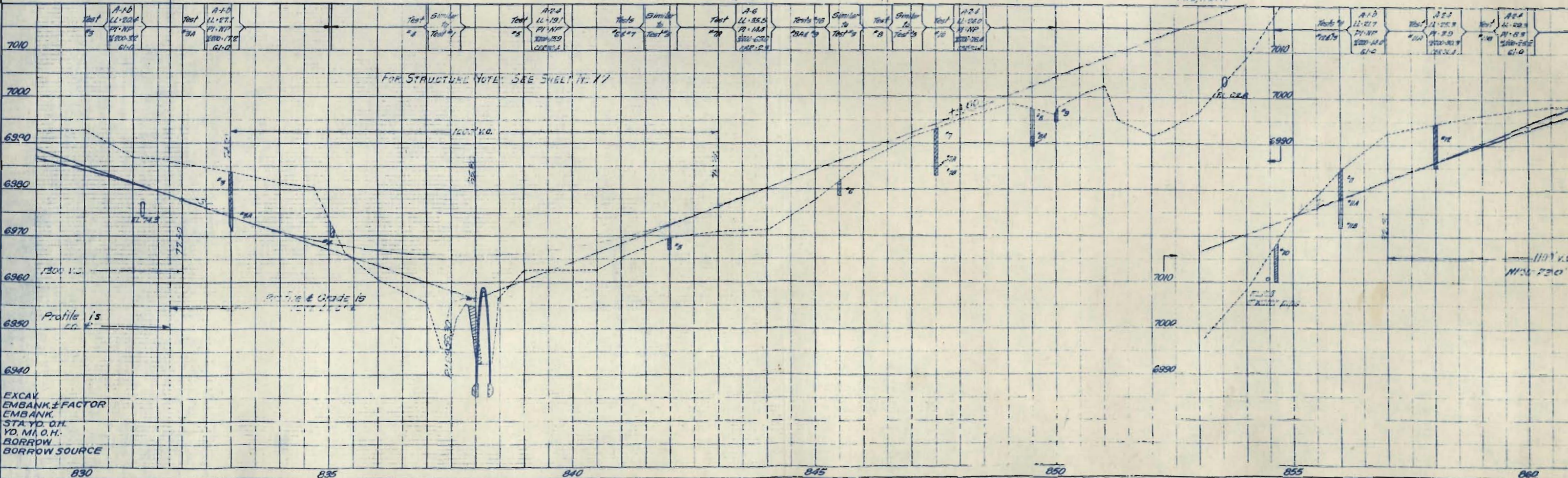
Future Construction



SW 1/4 Sec 14 T11S, R67W

NW 1/4 Sec 14 T11S, R67W

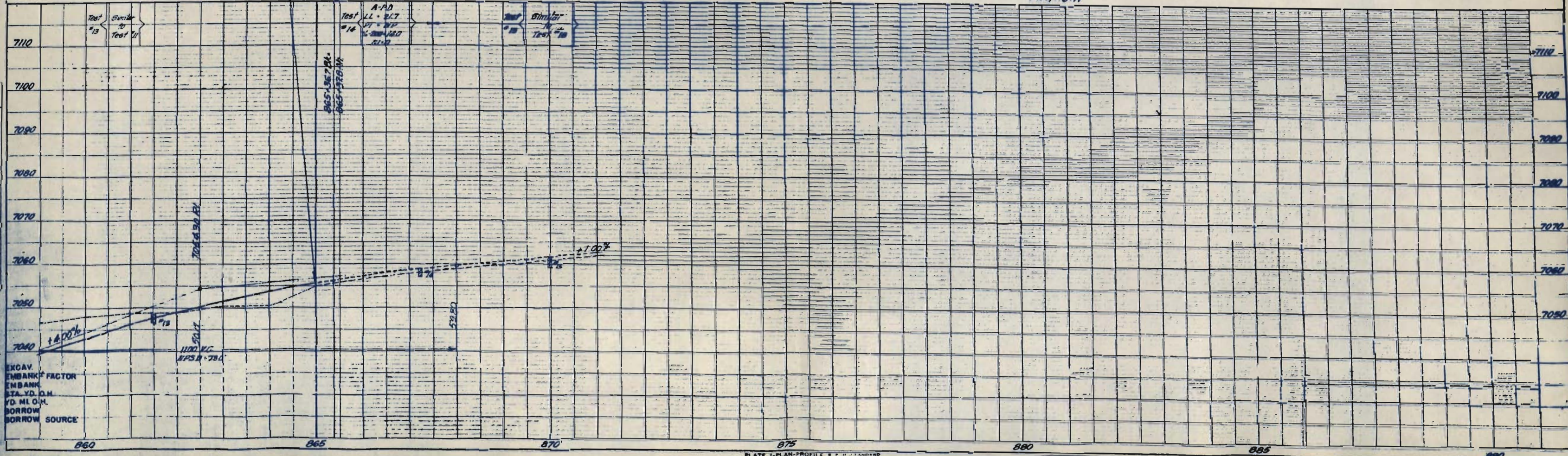
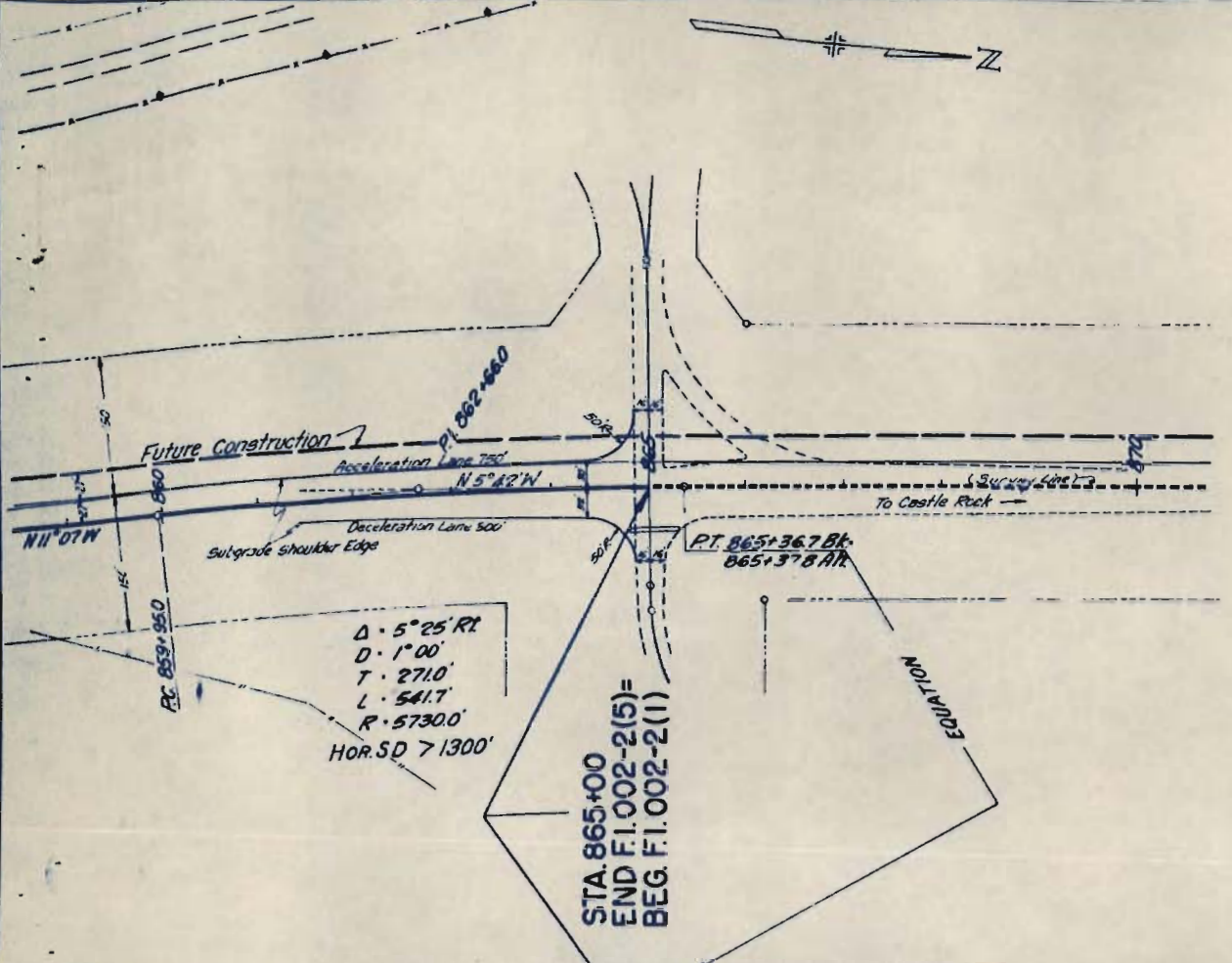
FOR STRUCTURE NOTE: SEE SHEET 11-17



EXCAV.  
 EMBANK. ± FACTOR  
 EMBANK.  
 STA. YD. Q.H.  
 YD. M.A.O.H.  
 BORROW  
 BORROW SOURCE

FED. ROAD DIST. NO.	STATE	PROJ. NO.	SHEET NO.	TOTAL SHEETS
3	COLO.	F.1.002-2(5)	5	

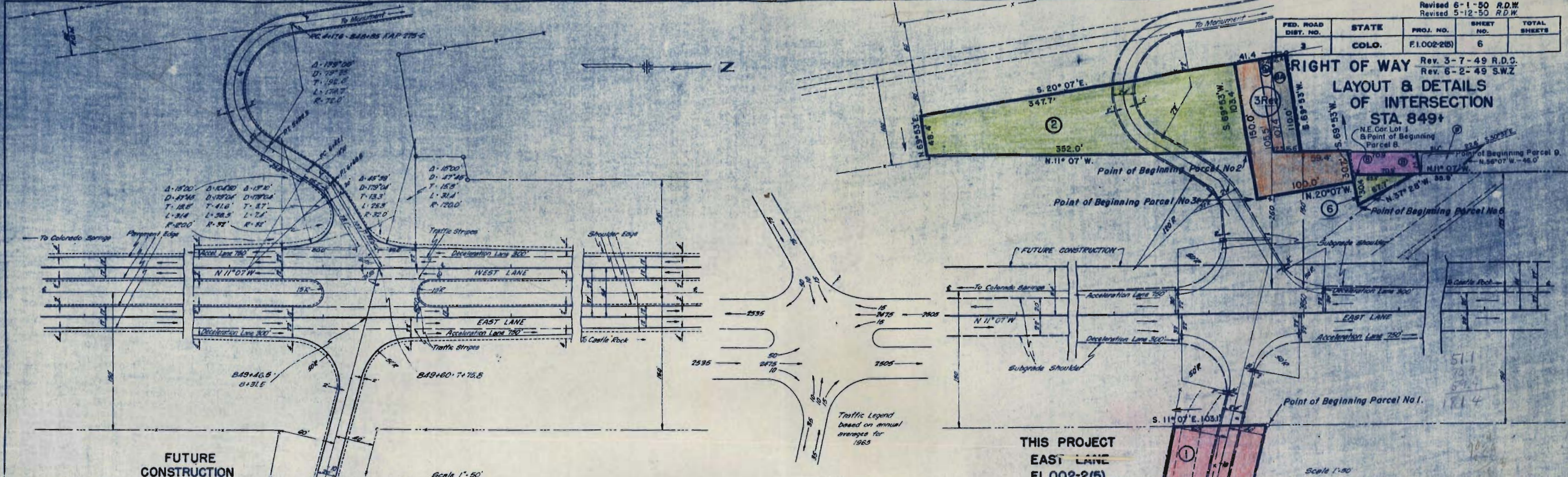
RIGHT OF WAY



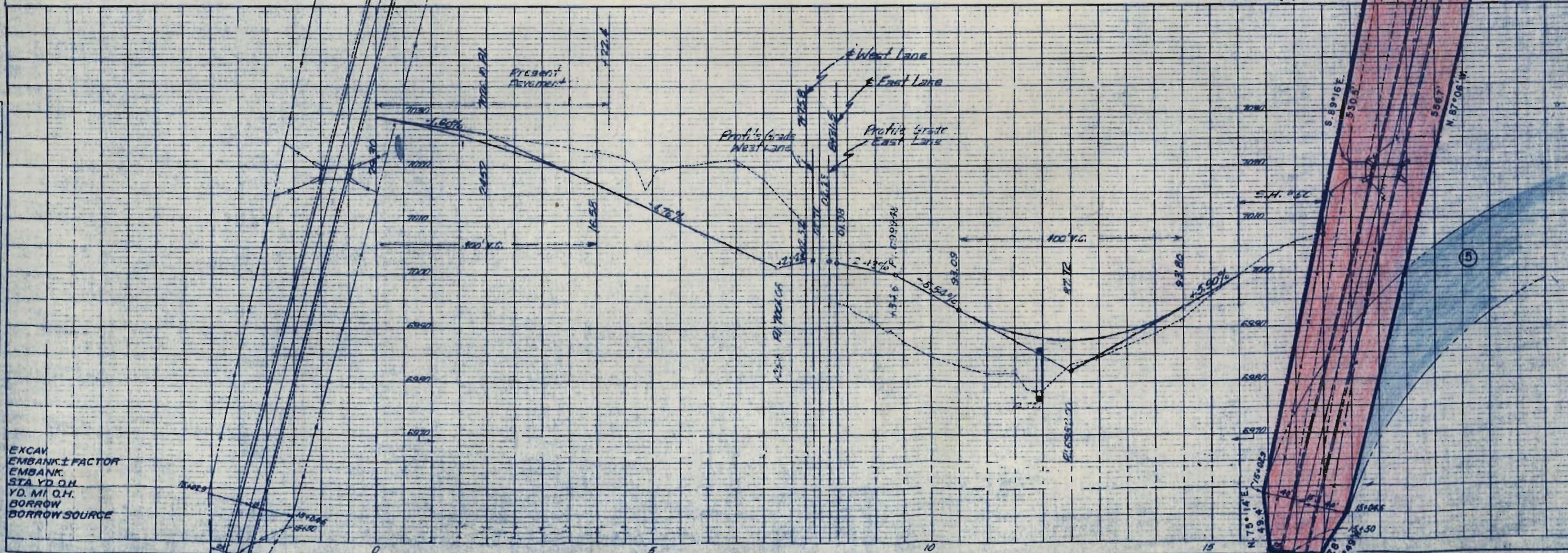
FED. ROAD DIST. NO.	STATE	PROJ. NO.	SHEET NO.	TOTAL SHEETS
3	COLO.	F.I.002-2(5)	6	

Rev. 3-7-49 R.D.C.  
Rev. 6-2-49 S.W.Z

**RIGHT OF WAY LAYOUT & DETAILS OF INTERSECTION STA 849+**



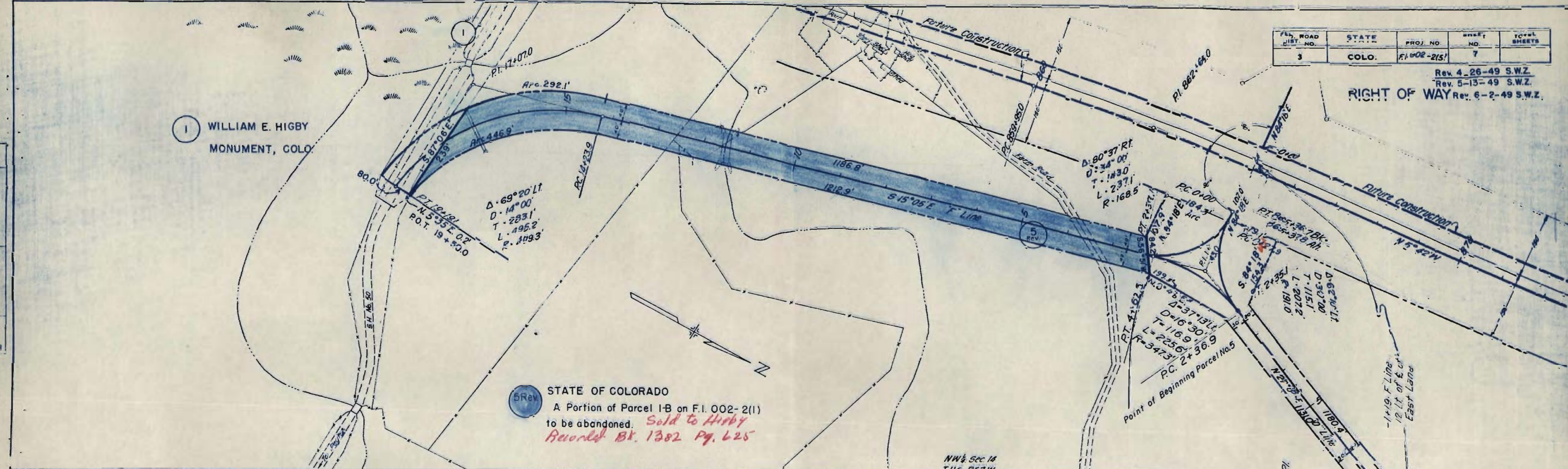
- ① WILLIAM E. HIGBY MONUMENT, COLO.
- ② WILLIAM E. HIGBY MONUMENT, COLO.
- ⑧ ③R CHESTER A. PORTER MONUMENT, COLO.
- ⑤ STATE OF COLORADO
- ⑨ ⑥ JOHN W. CHISTIAN MONUMENT, COLO.
- ⑧A ⑨A STATE OF COLORADO



PL. ROAD DIST. NO.	STATE	PROJ. NO.	SHEET NO.	TOTAL SHEETS
3	COLO.	F.I. 002-215	7	

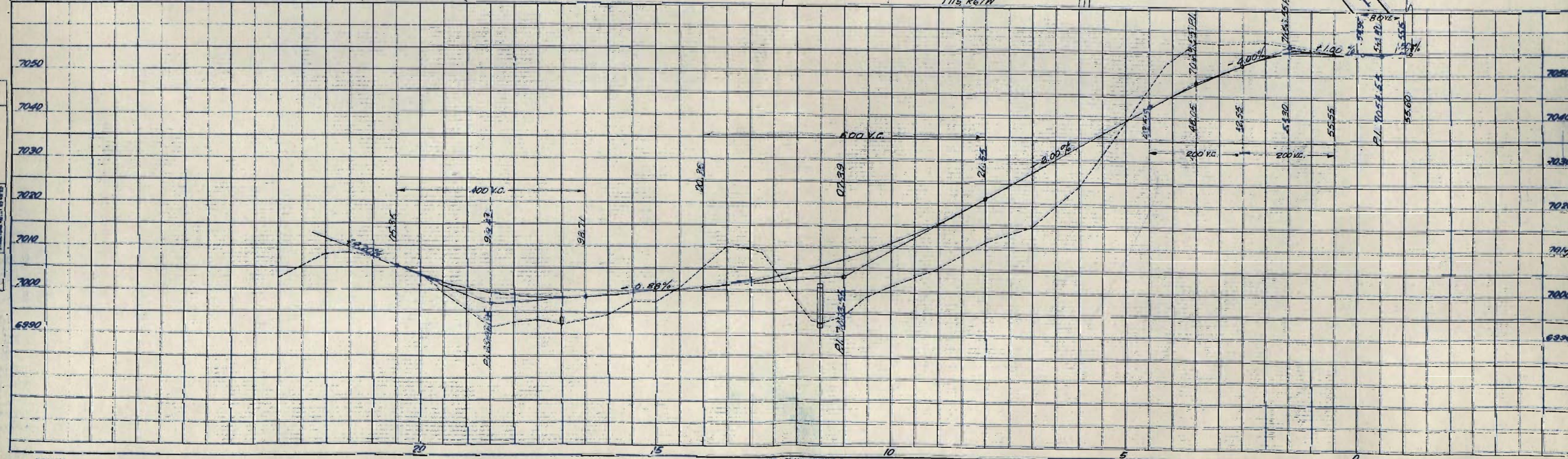
Rev. 4-26-49 S.W.Z.  
 Rev. 5-13-49 S.W.Z.  
 RIGHT OF WAY Rev. 6-2-49 S.W.Z.

1 WILLIAM E. HIGBY MONUMENT, COLO.



5 Rev STATE OF COLORADO  
 A Portion of Parcel 1B on F.I. 002-2(1)  
 to be abandoned. *Sold to Higby*  
*Recorded Bk. 1382 Pg. 625*

NW 1/4 Sec 14  
 T11S, R67W



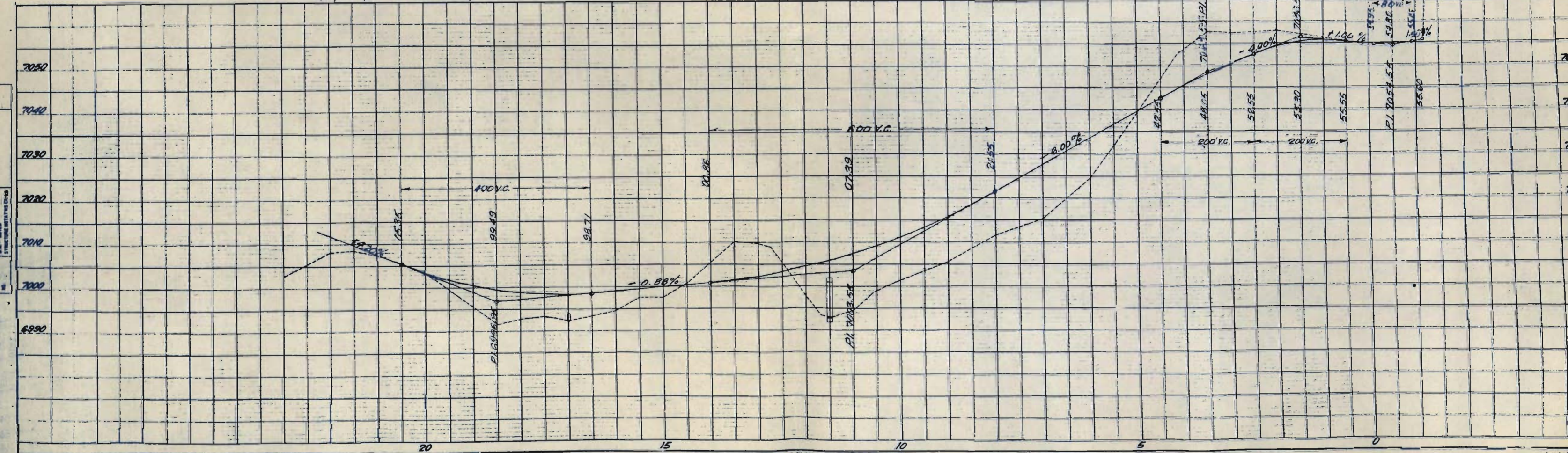
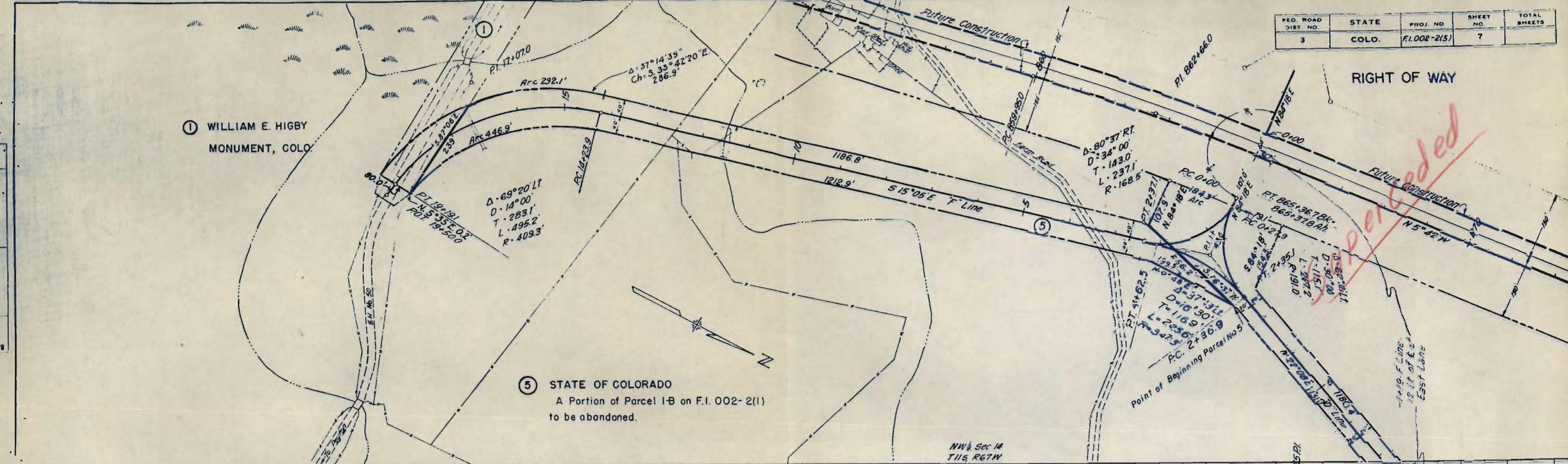
FED. ROAD DIST. NO.	STATE	PROJ. NO.	SHEET NO.	TOTAL SHEETS
3	COLO.	F.I. 002-2(15)	7	

① WILLIAM E. HIGBY MONUMENT, COLO.

⑤ STATE OF COLORADO  
A Portion of Parcel I-B on F.I. 002-2(1) to be abandoned.

RIGHT OF WAY

*Permitted*



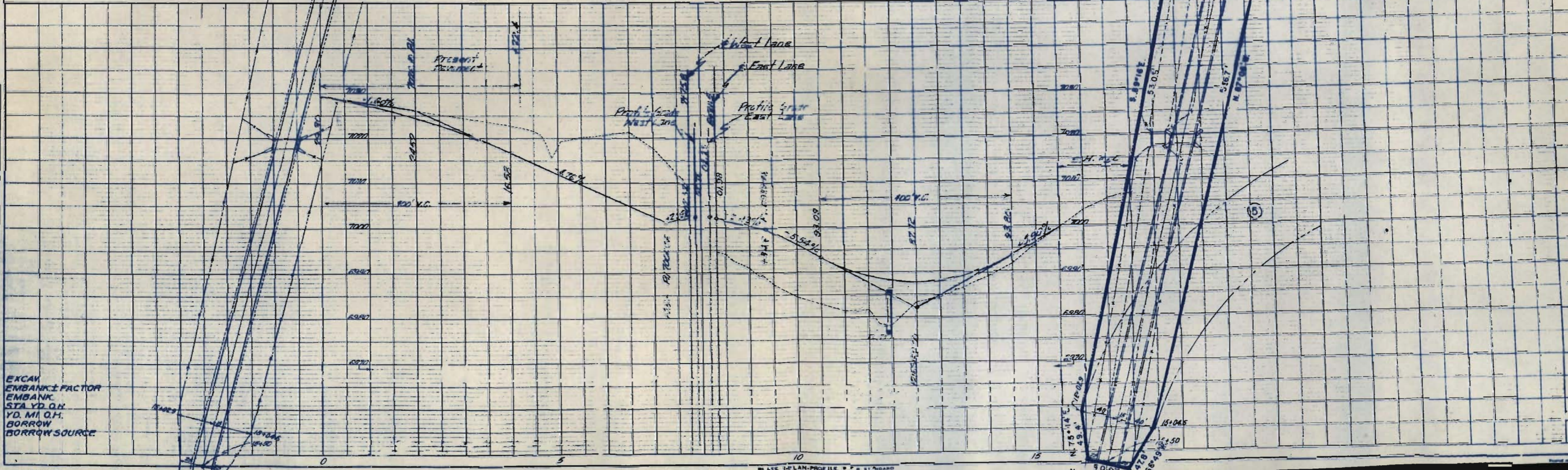
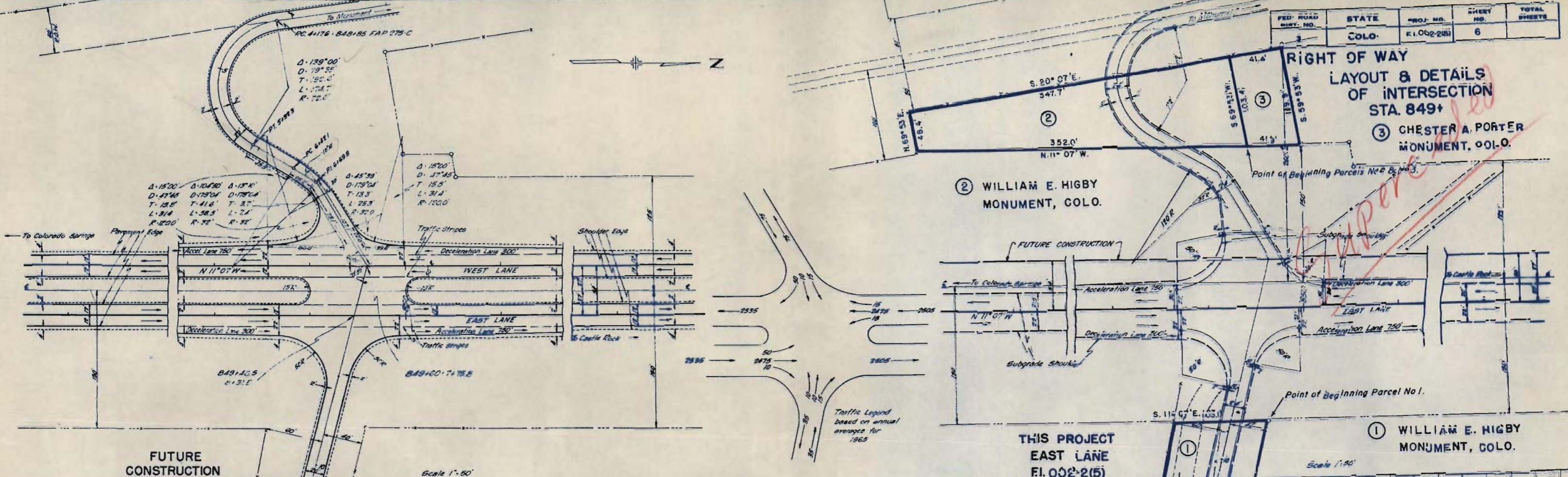
PLAN  
NOTE BOOK  
BY: [Signature]

PROFILE  
NOTE BOOK  
BY: [Signature]





FED. ROAD DIST. NO.	STATE	PROJ. NO.	SHEET NO.	TOTAL SHEETS
1	COLO.	E.I. 002-2(5)	6	



EXCAV  
EMBANK  
EMBANK  
STA YD O.H.  
YD. MI O.H.  
BORROW  
BORROW SOURCE

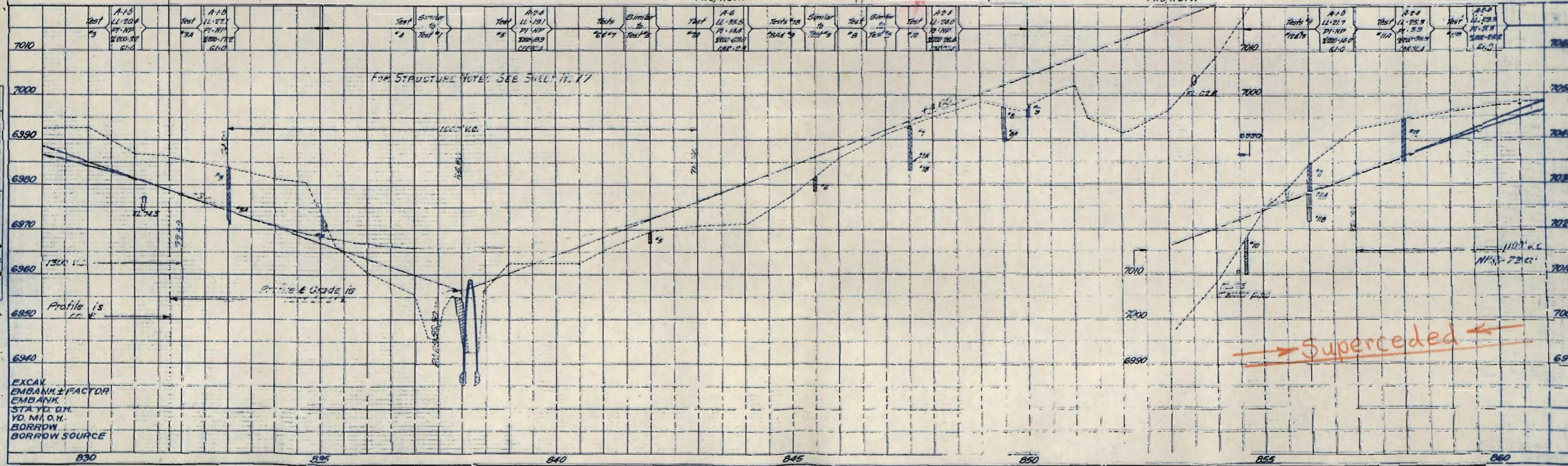
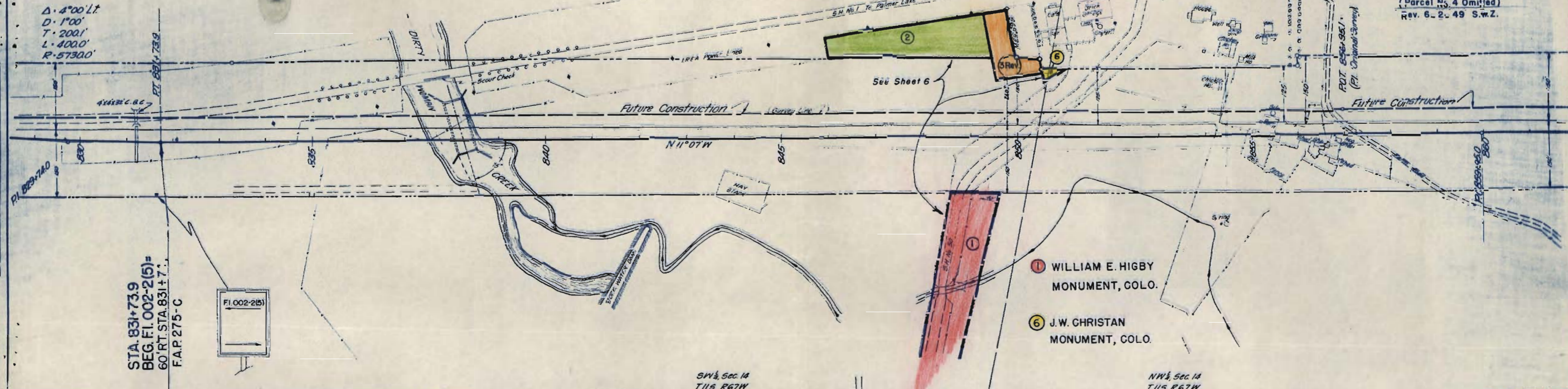


② WILLIAM E. HIGBY MONUMENT, COLO.

3Rev CHESTER A. PORTER MONUMENT, COLO.

REG. ROAD DIST. NO.	STATE	PROJ. NO.	SHEET NO.	TOTAL SHEETS
3	COLO.	F.1.002-2(5)	4	

RIGHT OF WAY  
 Rev. 3-7-49 R.D.S.  
 Rev. 2-25-49 T.L.K.  
 Parcel No. 4 Omitted  
 Rev. 6-2-49 S.W.Z.

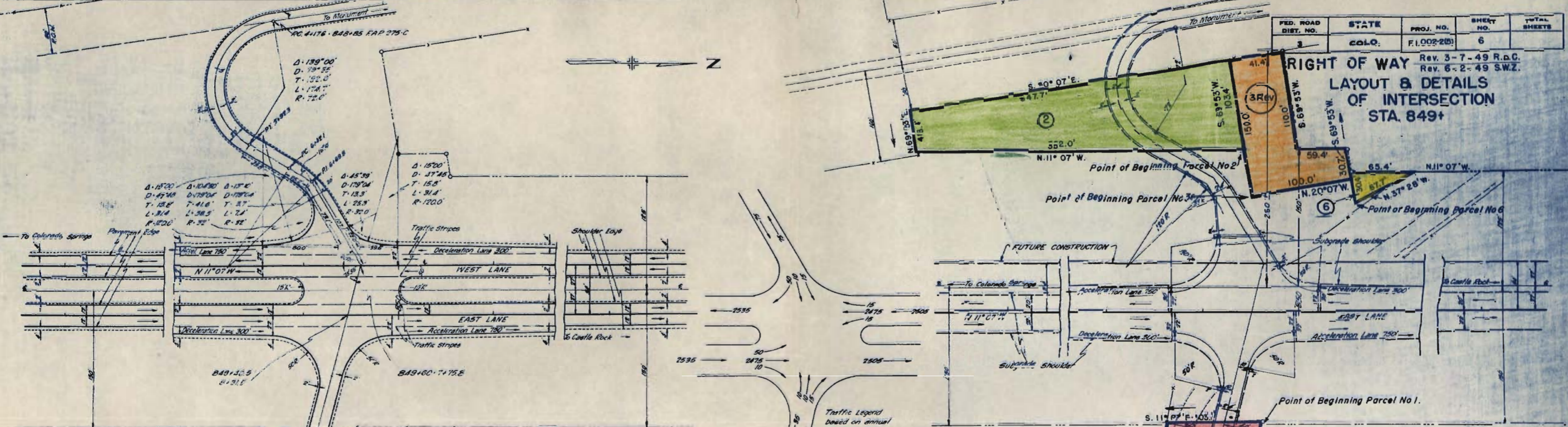


→ Superceded ←

FED. ROAD DIST. NO.	STATE	PROJ. NO.	SHEET NO.	TOTAL SHEETS
3	COLO.	F.1002-2(5)	6	

**RIGHT OF WAY**  
**LAYOUT & DETAILS**  
**OF INTERSECTION**  
**STA. 849+**

Rev. 3-7-49 R.D.C.  
 Rev. 6-2-49 S.W.Z.



Traffic Legend  
 based on annual  
 averages for  
 1963

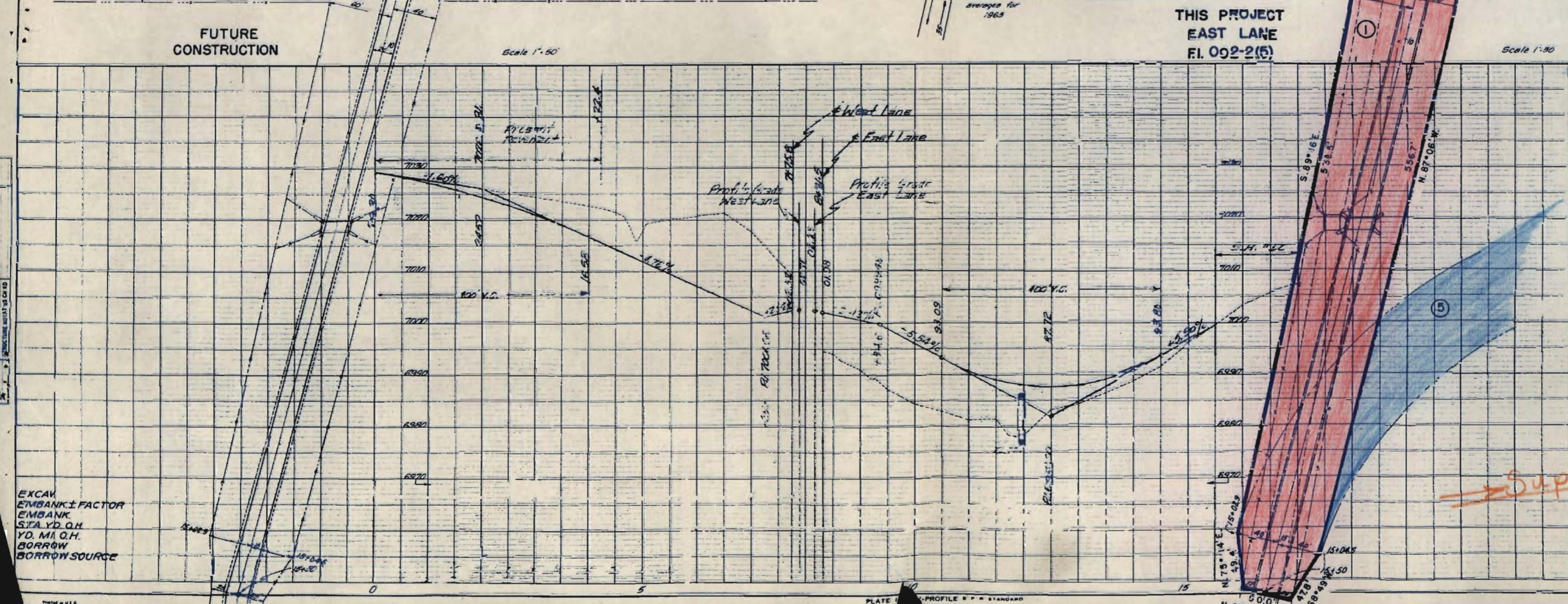
**FUTURE CONSTRUCTION**

**THIS PROJECT**  
**EAST LANE**  
**F.I. 002-2(5)**

Scale 1"=50'

Scale 1"=80'

- ① WILLIAM E. HIGBY MONUMENT, COLO.
- ② WILLIAM E. HIGBY MONUMENT, COLO.
- ③ CHESTER A. PORTER MONUMENT, COLO.
- ⑤ STATE OF COLORADO
- ⑥ J.W. CHRISTAN MONUMENT, COLO.



EXCAV  
 EMBANK & FACTOR  
 EMBANK  
 STA. YD. Q.H.  
 YD. M.I. Q.H.  
 BORROW  
 BORROW SOURCE

*Superseded*