

COLORADO

STATE HIGHWAY DEPARTMENT

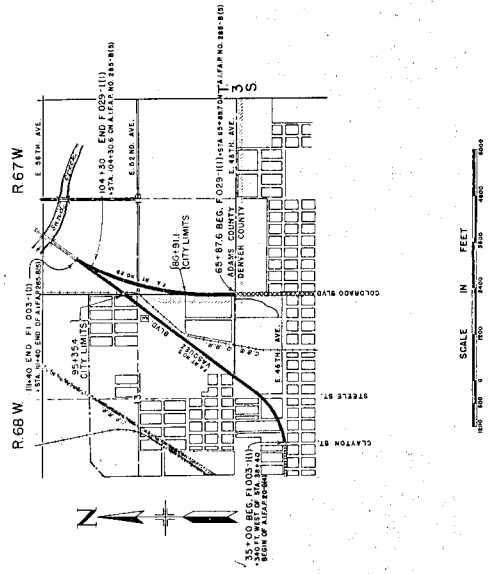
PLAN AND PROFILE OF PROPOSED FEDERAL AID PROJECT NOS F1003-1(1) & F 029-1(1) STATE HIGHWAY NOS 2 & 3 ADAMS AND DENVER COUNTIES

INDEX OF SHEETS

- 1 CATCH MAP AND TITLE PAGE.
- 2 TYPICAL SECTIONS & DETAILS FOR EXTENDING 4" x 6" C.C.
- 3 LIST OF STRUCTURES, SURFACING, PLAN, FENCING, & UTILITIES.
- 4 SECTION LETTERS, NUMBER OF YEAR & STRUCTURE NUMBER.
- 5 STANDARD DETAILS AND ADJUSTS FOR CURB COLLECTORS.
- 6 STANDARD DETAILS AND ADJUSTS FOR C&G COLLECTORS.
- 7 STANDARD DETAILS AND ADJUSTS FOR C&G COLLECTORS.
- 8 STANDARD DETAILS AND ADJUSTS FOR C&G COLLECTORS.
- 9 STANDARD DETAILS AND ADJUSTS FOR C&G COLLECTORS.
- 10 STANDARD DETAILS AND ADJUSTS FOR C&G COLLECTORS.
- 11 STANDARD DETAILS AND ADJUSTS FOR C&G COLLECTORS.
- 12 STANDARD DETAILS AND ADJUSTS FOR C&G COLLECTORS.
- 13 TYPICAL SILE APPARATUS, ROAD FLARING, CUT SLOPE.
- 14 TREATMENT AND WIDENING AT BRIDGES.
- 15 DETAILS OF INTERSECTION, VASQUEZ BLVD. & E. 58TH AVE.
- 16 DETAILS OF INTERSECTION, VASQUEZ BLVD. & E. 58TH AVE.
- 17 DETAILS OF INTERSECTION, VASQUEZ BLVD. & E. 58TH AVE.
- 18 DETAILS OF INTERSECTION, VASQUEZ BLVD. & E. 58TH AVE.
- 19 DETAILS OF INTERSECTION, VASQUEZ BLVD. & E. 58TH AVE.
- 20 DETAILS OF INTERSECTION, VASQUEZ BLVD. & E. 58TH AVE.
- 21 DETAILS OF INTERSECTION, VASQUEZ BLVD. & E. 58TH AVE.
- 22 DETAILS OF INTERSECTION, VASQUEZ BLVD. & E. 58TH AVE.
- 23 DETAILS OF INTERSECTION, VASQUEZ BLVD. & E. 58TH AVE.
- 24 DETAILS OF INTERSECTION, VASQUEZ BLVD. & E. 58TH AVE.
- 25 DETAILS OF INTERSECTION, VASQUEZ BLVD. & E. 58TH AVE.
- 26 DETAILS OF INTERSECTION, VASQUEZ BLVD. & E. 58TH AVE.
- 27 DETAILS OF INTERSECTION, VASQUEZ BLVD. & E. 58TH AVE.
- 28 DETAILS OF INTERSECTION, VASQUEZ BLVD. & E. 58TH AVE.

SCALES OF ORIGINAL TRACINGS

ON PLAN, 1" IN. = 100 FT. HORIZONTAL.
ON PROFILE, 1" IN. = 10 FT. VERTICAL.
GRADE, 1" IN. = 10 FT. VERTICAL.
GROSS LENGTH OF PROJECT 7533.947' - 1430' 0"
NET LENGTH OF PROJECT 7533.947' - 1430' 0"
GROSS LENGTH OF PROJECT 3948.471' - 672' 0"
NET LENGTH OF PROJECT 3948.471' - 672' 0"



NO. OF SHEETS	1	TOTAL SHEETS	1
NO. OF SHEETS	1	TOTAL SHEETS	1
NO. OF SHEETS	1	TOTAL SHEETS	1
NO. OF SHEETS	1	TOTAL SHEETS	1

- #### CONVENTIONAL SIGNS
- CENTER LINE OF SURVEY
 - RIGHT-OF-WAY LINE
 - COUNTY LINE
 - TOWNSHIP OR RANGE LINE
 - QUARTER SECTION LINE
 - PROPERTY OR TRACT LINE
 - CITY LIMITS
 - RAILROAD
 - BARBED WIRE
 - WIRE FENCE
 - WIRE COMBINATION FENCE
 - TELEPH & TELEPHONE LINE
 - POWER LINE
 - PRESENT ROAD (PLAN SHEETS)

RECOMMENDED FOR APPROVAL

J. J. Baird
Project Engineer

APPROVED

Mark H. Cochrane
DISTRICT ENGINEER

RECOMMENDED FOR APPROVAL DATE

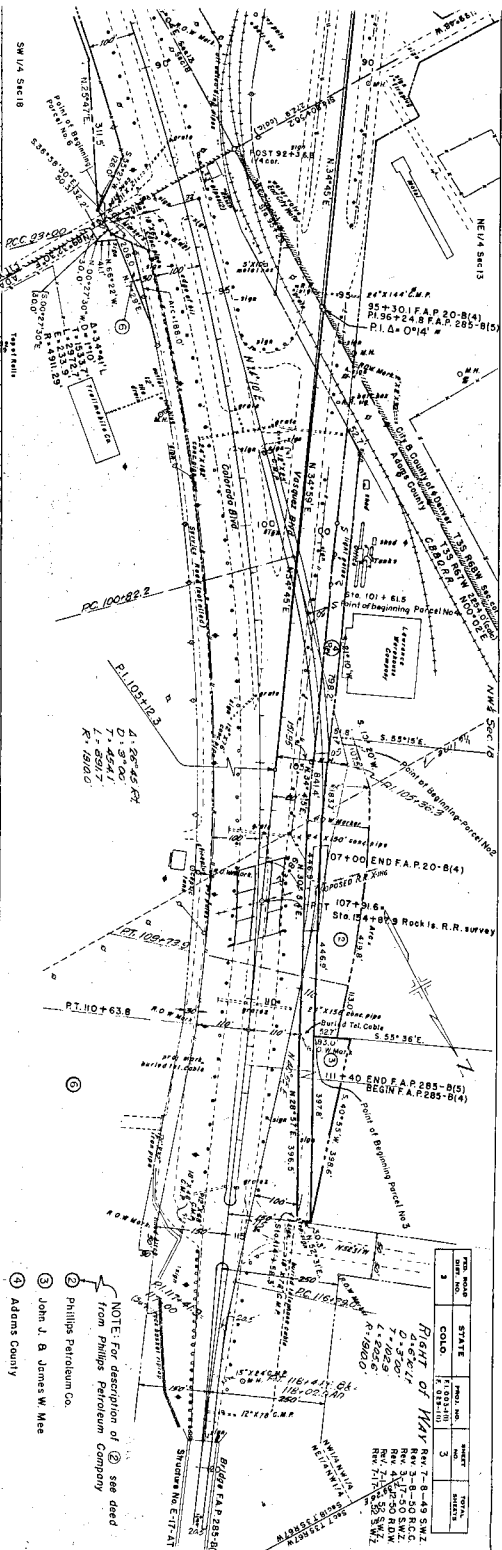
APPROVED DATE

DATE

It is recommended that bidders on this project go over the plan, details and specifications of this Department.

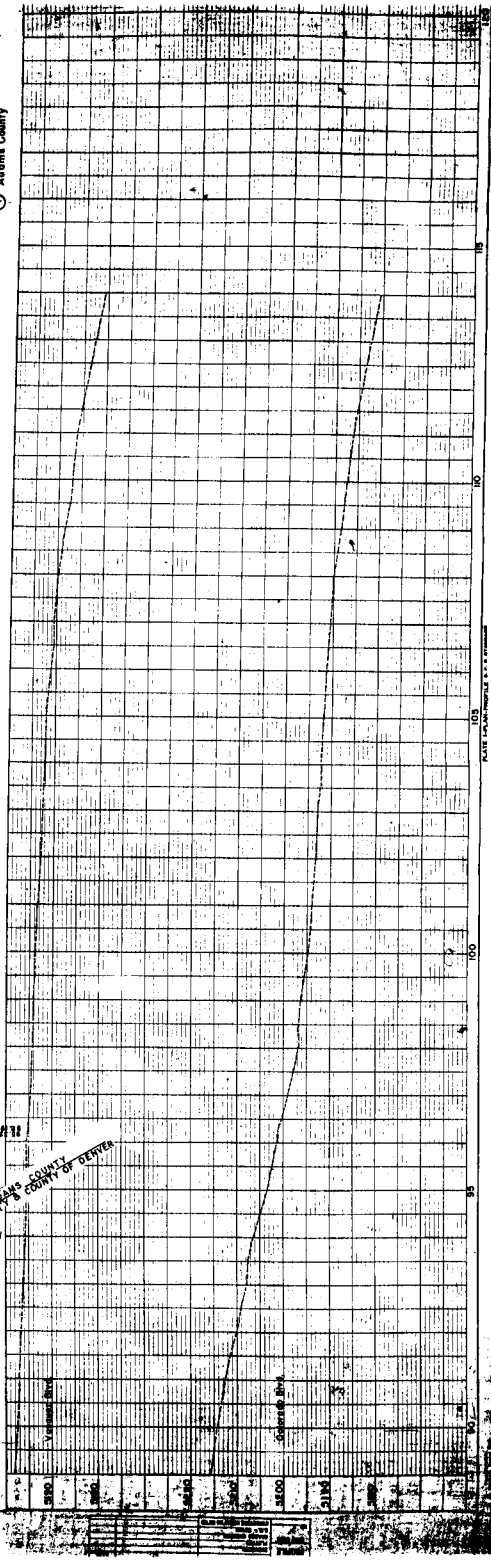
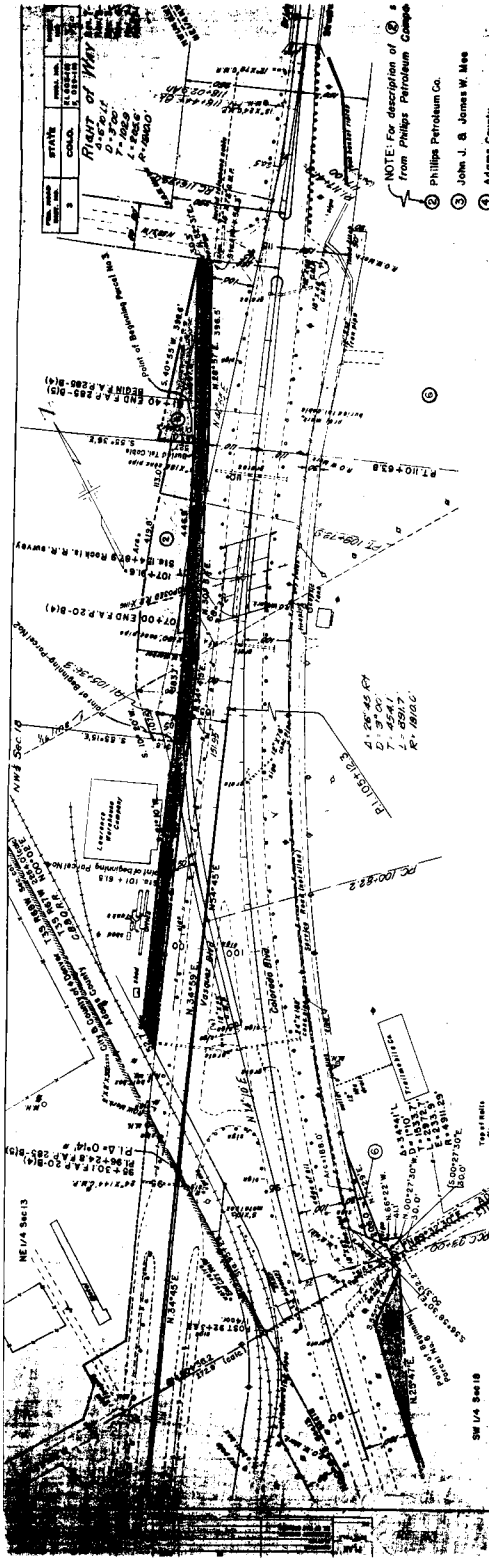
H. T. Smith, District Engineer,
Denver, Colorado
F. M. Miller, District Engineer,
Denver, Colorado

50	5190
51	5180
52	5170
53	5160
54	5150
55	5140
56	5130
57	5120
58	5110
59	5100
60	5090
61	5080
62	5070
63	5060
64	5050
65	5040
66	5030
67	5020
68	5010
69	5000
70	4990
71	4980
72	4970
73	4960
74	4950
75	4940
76	4930
77	4920
78	4910
79	4900
80	4890
81	4880
82	4870
83	4860
84	4850
85	4840
86	4830
87	4820
88	4810
89	4800
90	4790
91	4780
92	4770
93	4760
94	4750
95	4740
96	4730
97	4720
98	4710
99	4700
100	4690
101	4680
102	4670
103	4660
104	4650
105	4640
106	4630
107	4620
108	4610
109	4600
110	4590
111	4580
112	4570
113	4560
114	4550
115	4540
116	4530
117	4520
118	4510
119	4500
120	4490

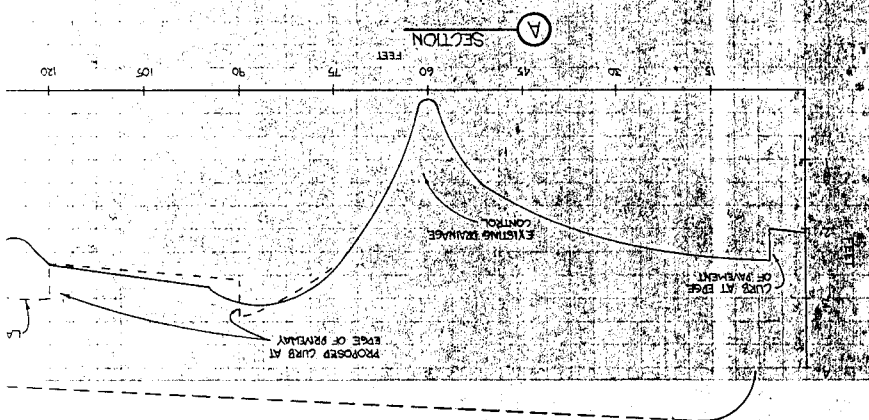
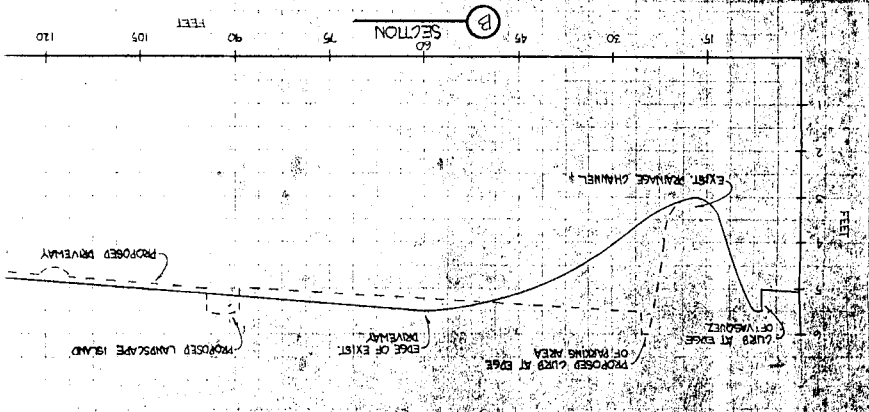
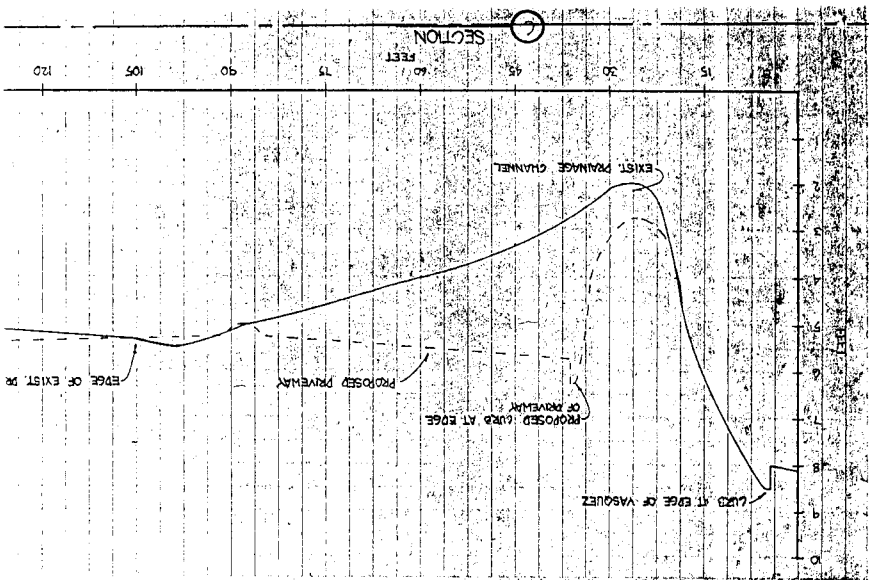


FILE NO.	STATE	PLAT NO.	ACRES
3	COLO.	103-12.3	3

Right of Way
 6'-6" E.C.
 7'-0" R.C.
 7'-0" R.W.
 4'-0" R.W.
 3'-0" S.W.
 1'-0" S.W.

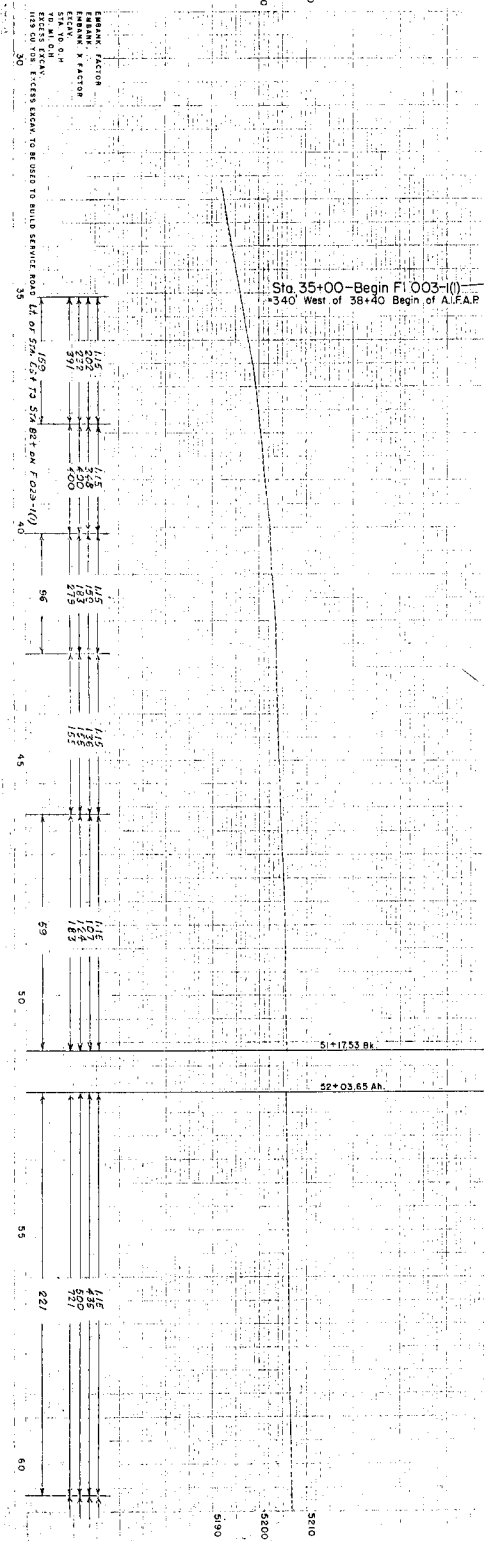
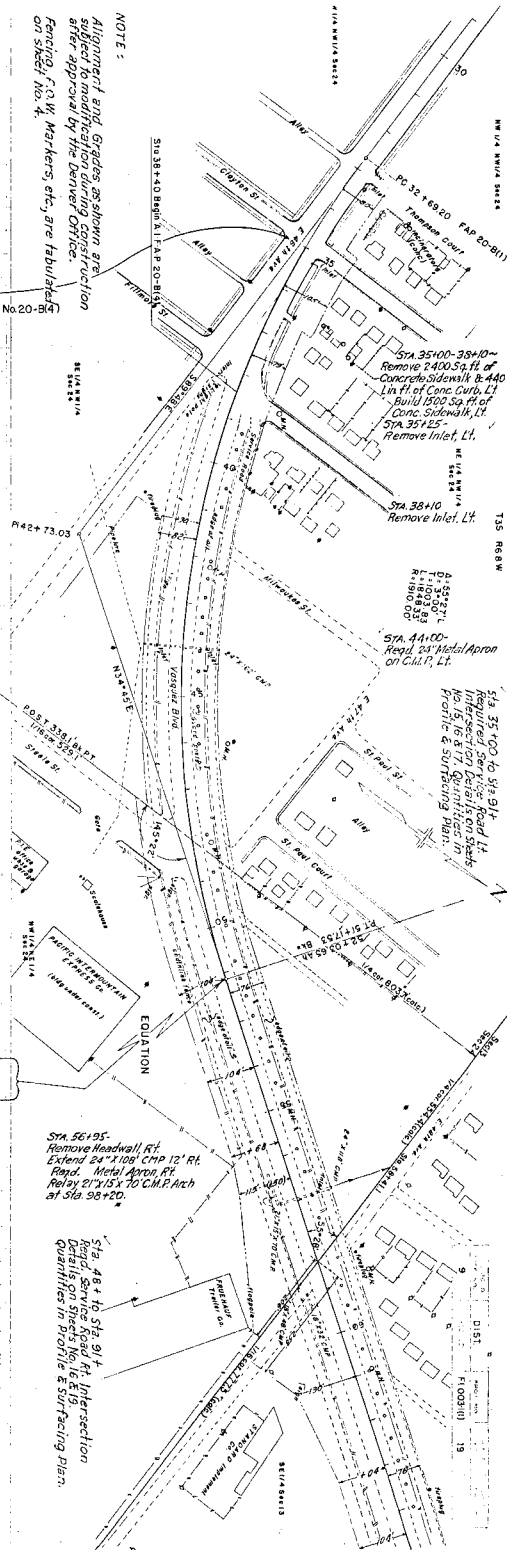


OLD 56th AVENUE



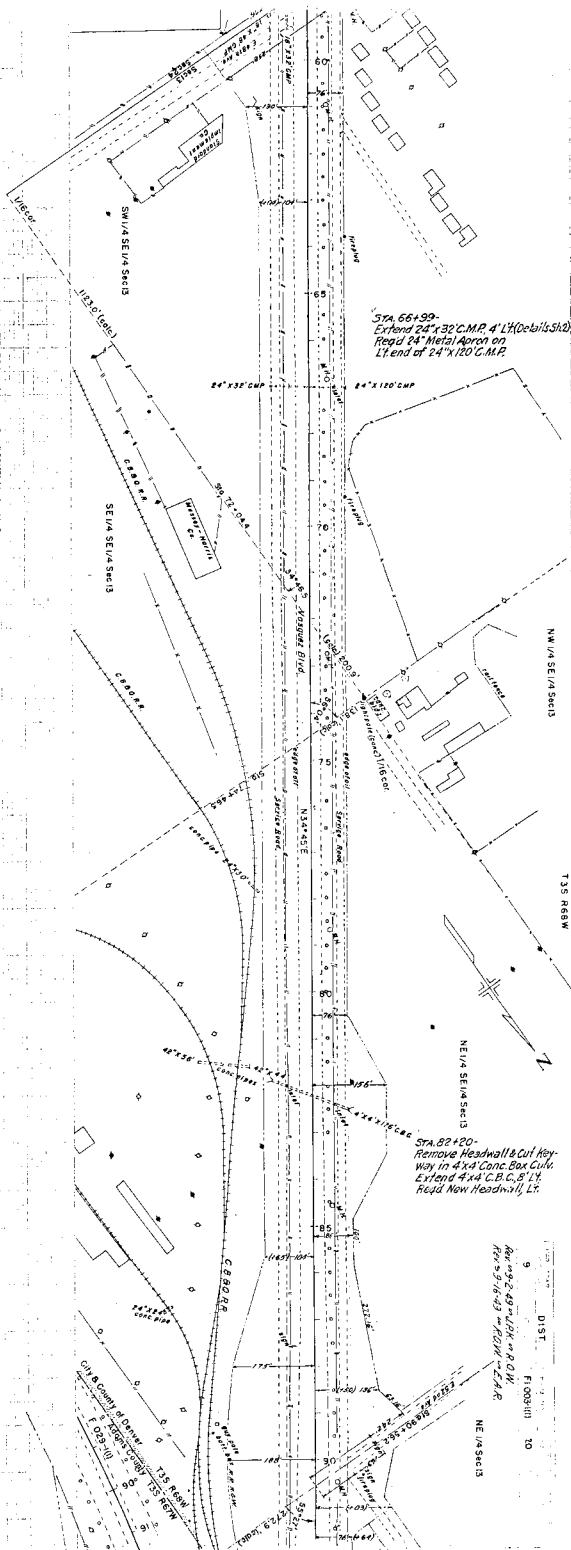
NOTE:
 All proposed work Grades, openings, and
 subject to modification during construction
 after approval by the Denver Office.
 Fencing, F.O.W. Markers, etc., are fabricated
 on sheet No. 4.

Sta 35+00-Begin F.I. 003-1(1)
 +340 West of 36+40 Begin of A.I.F.A.P. No.20-B4



VERTICAL CURVE DATA

Station	Grade	Length
35	1.00%	100'
36	1.00%	100'
37	1.00%	100'
38	1.00%	100'
39	1.00%	100'
40	1.00%	100'
41	1.00%	100'
42	1.00%	100'
43	1.00%	100'
44	1.00%	100'
45	1.00%	100'
46	1.00%	100'
47	1.00%	100'
48	1.00%	100'
49	1.00%	100'
50	1.00%	100'
51	1.00%	100'
52	1.00%	100'
53	1.00%	100'
54	1.00%	100'
55	1.00%	100'
56	1.00%	100'
57	1.00%	100'
58	1.00%	100'
59	1.00%	100'
60	1.00%	100'



STA. 66+99-
 Extend 24'x30' C.M.P. 4' L'H (to be built) 5'x2'
 Reg'd 24' Metal Apron on
 LT end of 24'x120' C.M.P.

STA. 82+20-
 Remove Headwall & Cut Key-
 way in 4'x4' Conc. Box Culv.
 Extend 4'x4' C.C.P. 6.5' L'H
 Head New Headwall, Lt.

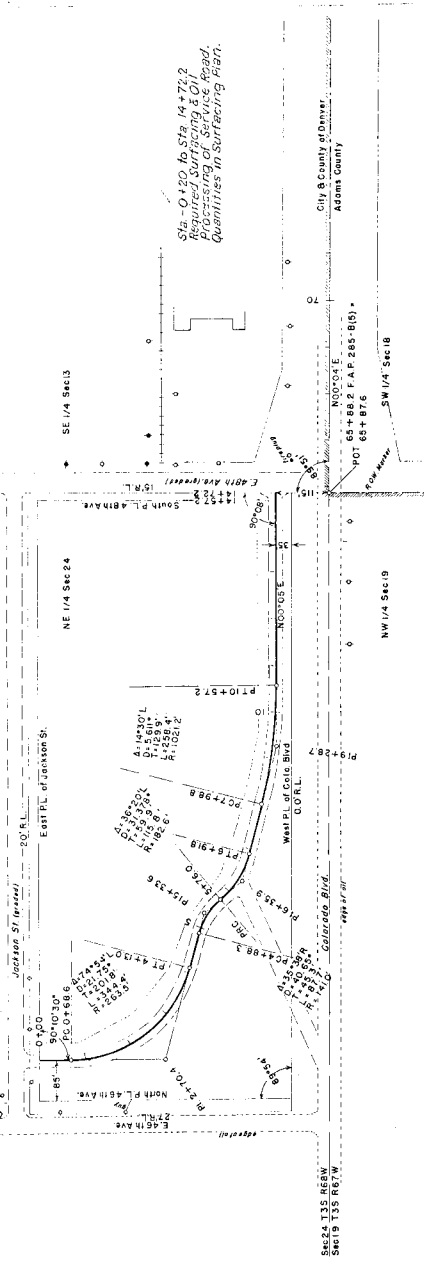
9 DIST. FLOORPLAN TO
 NE 1/4 SEC. 3, T12N, R12W, S12E
 NE 1/4 SEC. 3, T12N, R12W, S12E
 NE 1/4 SEC. 3

20	5200
30	5190
40	5210
50	5200
60	5210
70	5200
80	5210
90	5200

EMERGENCY FACTOR	1.15
EMERGENCY X FACTOR	4.00
EMERGENCY Y FACTOR	4.00
EMERGENCY Z FACTOR	4.00
EMERGENCY W FACTOR	4.00
EMERGENCY V FACTOR	4.00
EMERGENCY U FACTOR	4.00
EMERGENCY T FACTOR	4.00
EMERGENCY S FACTOR	4.00
EMERGENCY R FACTOR	4.00
EMERGENCY Q FACTOR	4.00
EMERGENCY P FACTOR	4.00
EMERGENCY O FACTOR	4.00
EMERGENCY N FACTOR	4.00
EMERGENCY M FACTOR	4.00
EMERGENCY L FACTOR	4.00
EMERGENCY K FACTOR	4.00
EMERGENCY J FACTOR	4.00
EMERGENCY I FACTOR	4.00
EMERGENCY H FACTOR	4.00
EMERGENCY G FACTOR	4.00
EMERGENCY F FACTOR	4.00
EMERGENCY E FACTOR	4.00
EMERGENCY D FACTOR	4.00
EMERGENCY C FACTOR	4.00
EMERGENCY B FACTOR	4.00
EMERGENCY A FACTOR	4.00

SERVICE ROAD - WEST OF COLO. BLVD.
 BETWEEN 46TH AVE. & 48TH AVE.

9 DIST F029(11) 22



SECS 24 13E, 66SW
 SECS 19 13E, 66W

5240
 5230
 5220

0 5 10 15

