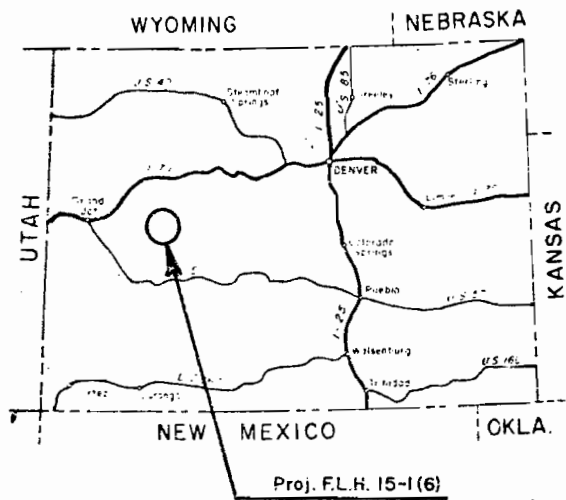


REG	STATE	PROJECT	SHEET NO.	TOTAL SHEETS
8	COLO.	FL.H. 15-1(6)	1	

INDEX TO SHEETS	
SHEET	DESCRIPTION
1	Title Sheet
2	Typical Sections
	Summary

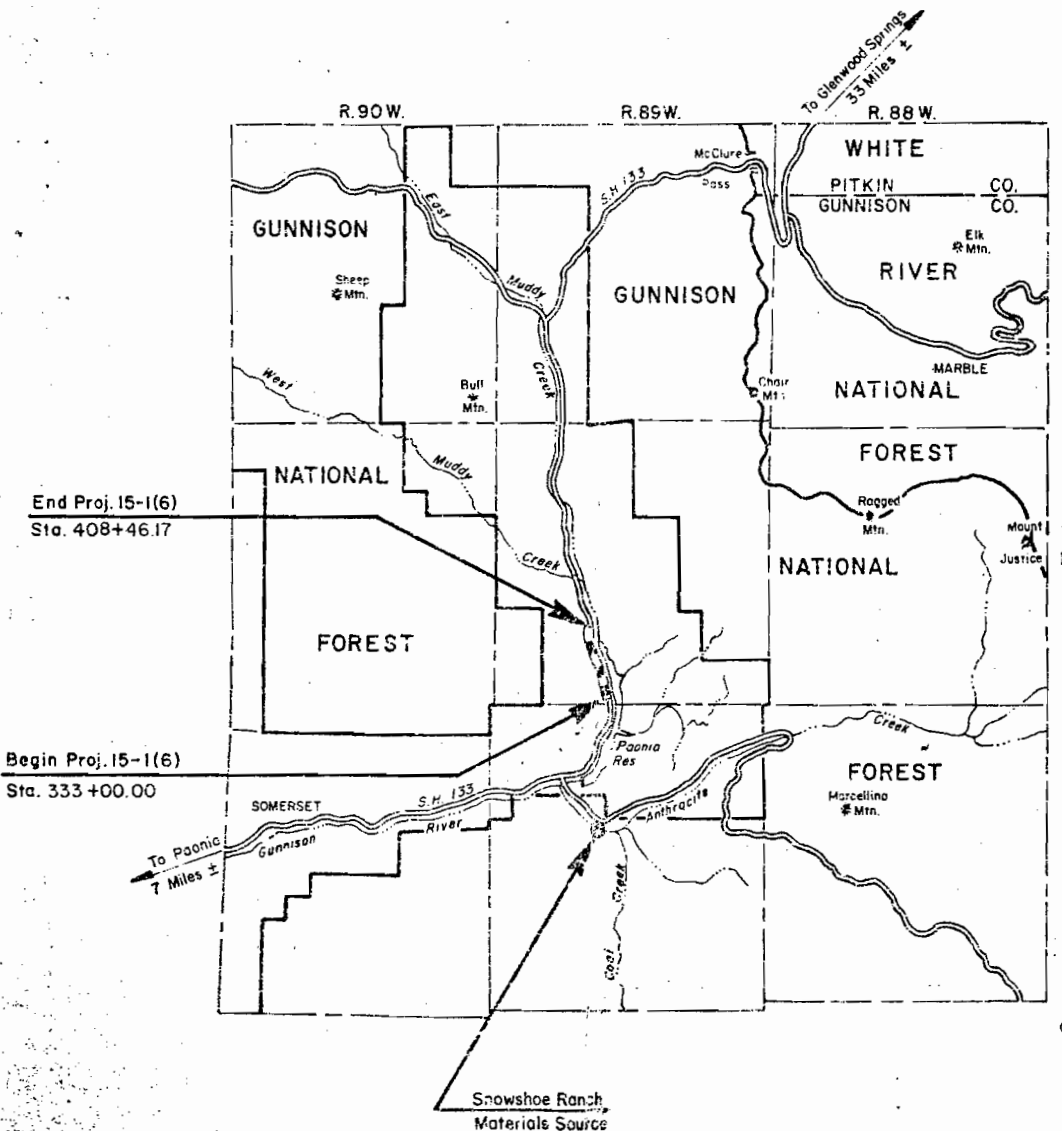


U.S. DEPARTMENT OF TRANSPORTATION
 FEDERAL HIGHWAY ADMINISTRATION
 RIGHT-OF-WAY PLANS FOR PROPOSED
 COLORADO FEDERAL LANDS HIGHWAY PROJECT 15-1(6)
MC CLURE PASS
 CLASS 2
 GUNNISON COUNTY
 LENGTH 1.429 MILES

S.H. 133

CONVENTIONAL SYMBOLS

- PROJECTED CENTERLINE
- STAKED CENTERLINE
- REVISED CENTERLINE
- PRESENT ROAD
- STATE BOUNDARY
- COUNTY LINE
- FOREST BOUNDARY
- PARK BOUNDARY
- TOWNSHIP OR RANGE LINE
- SECTION LINE
- 1/4 SECTION LINE
- 1/16 SECTION LINE
- OWNERSHIP BOUNDARY
- PARCEL NUMBER
- SECTION CORNERS
- 1/4 CORNERS
- 1/16 CORNERS
- PROPOSED R/W LINE & CALCULATIONS
- FENCE
- GATE
- CATTLE GUARD
- SLOPE LIMITS
- CONSTRUCTION PERMIT
- EXISTING POLES
- UNDER GROUND LINES
- EXISTING CULVERTS
- NEW CULVERTS
- PIPE LINE (WATER, GAS, ETC.)
- DROP INLETS & MANHOLE
- TRAIL
- RAILROAD
- IRRIGATION OR FURROW DITCH
- INTERMITTENT STREAM
- RIVER WITH BRIDGE
- CHANNEL CHANGE
- DIKE
- ROCK OUTCROP
- MARSH OR SWAMP
- TREES
- GUARD RAIL
- CONTROL POINTS



FILE COPY
Do Not Remove

TYPE OF CONSTRUCTION:
Grading, drainage, base and bituminous surface treatment

TYPE CODE: 3210

DESIGN DESIGNATION:

ADT (1981)	450
ADT (2001)	1690
DHV	507
D	50%
T	6%
V	30 mph

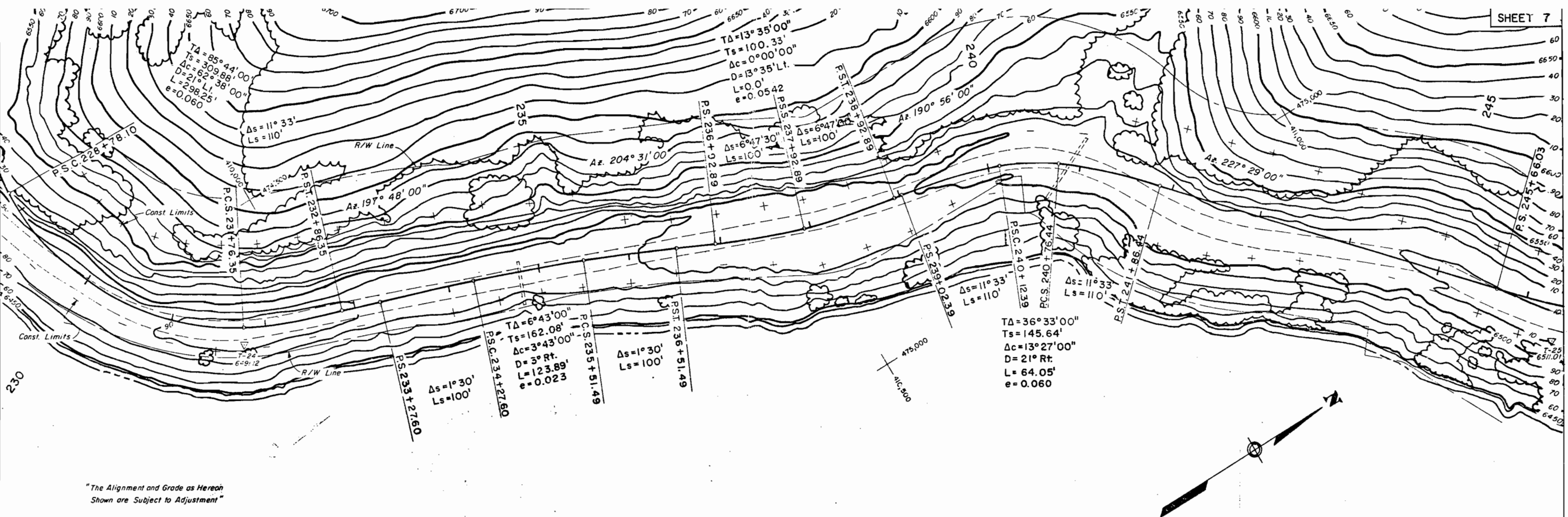
PLANS PREPARED BY
 U.S. DEPARTMENT OF TRANSPORTATION
 FEDERAL HIGHWAY ADMINISTRATION
 DENVER, COLORADO

APPROVED _____ DATE _____ 1981
 Division Engineer, Central Direct Federal Division

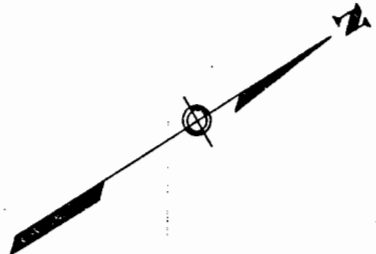
LEGEND

EXISTING ROAD	UNIMPROVED ROAD	GRADED ROAD	NEW PAVED ROAD	RAILROAD	SURFACE TREATMENT	PULVERIZED ASPHALT	CONCRETE
---------------	-----------------	-------------	----------------	----------	-------------------	--------------------	----------

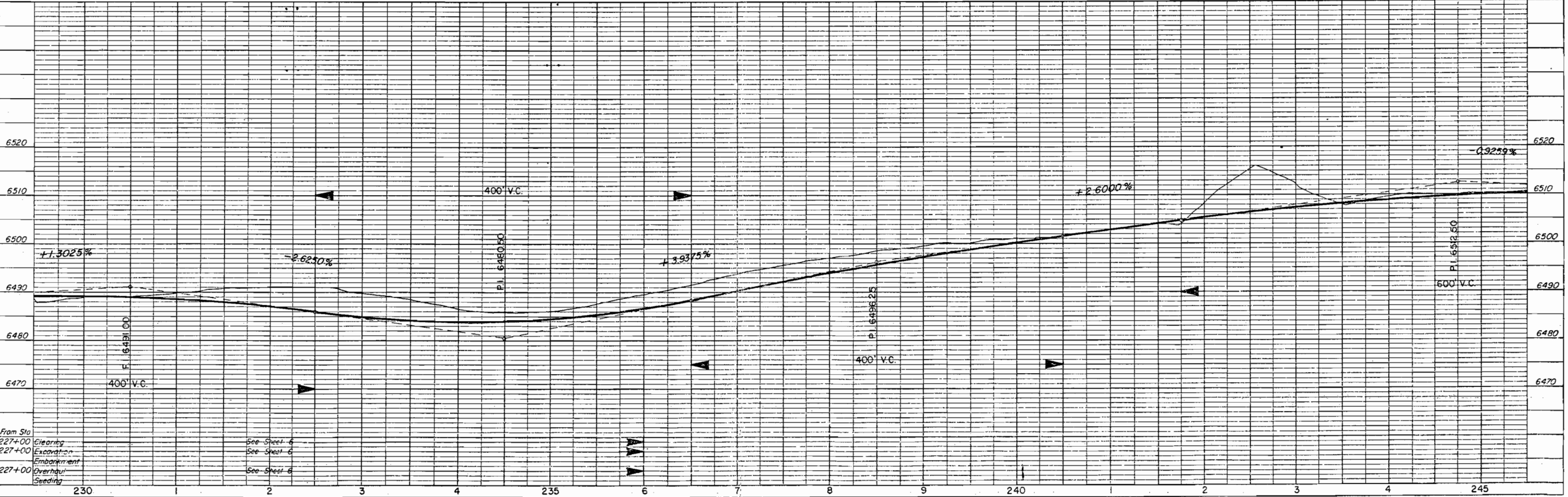
PLAN	DATE
SURVEYED	BY
ALIGNED	BY
CHECKED	BY
RT. OF WAY CHECKED	BY
NOTE BOOK NO.	



"The Alignment and Grade as Hereon Shown are Subject to Adjustment"



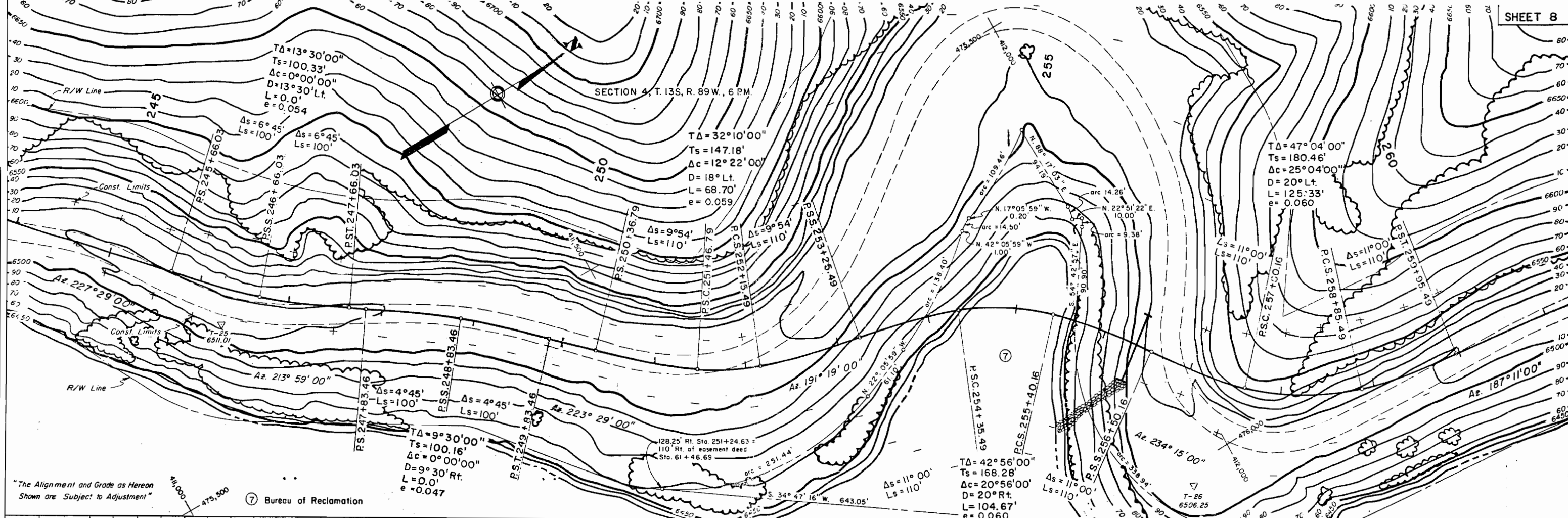
PROFILE	DATE
SURVEYED	BY
GRADES CHECKED	BY
R.M.A. NOTED	BY
STRUCTURE NOTATIONS CHKD	BY
NOTE BOOK NO.	



From Sta 227+00 Clearing
 227+00 Excavation
 227+00 Embankment
 Overhaul
 Seeding

See Sheet 6
 See Sheet 6
 See Sheet 6

BY	DATE
SURVEYED ALIGNED RT. OF WAY CHECKED NO.	
PLAN SURVEYED GRADES CHECKED ALIGNED RT. OF WAY CHECKED NO.	

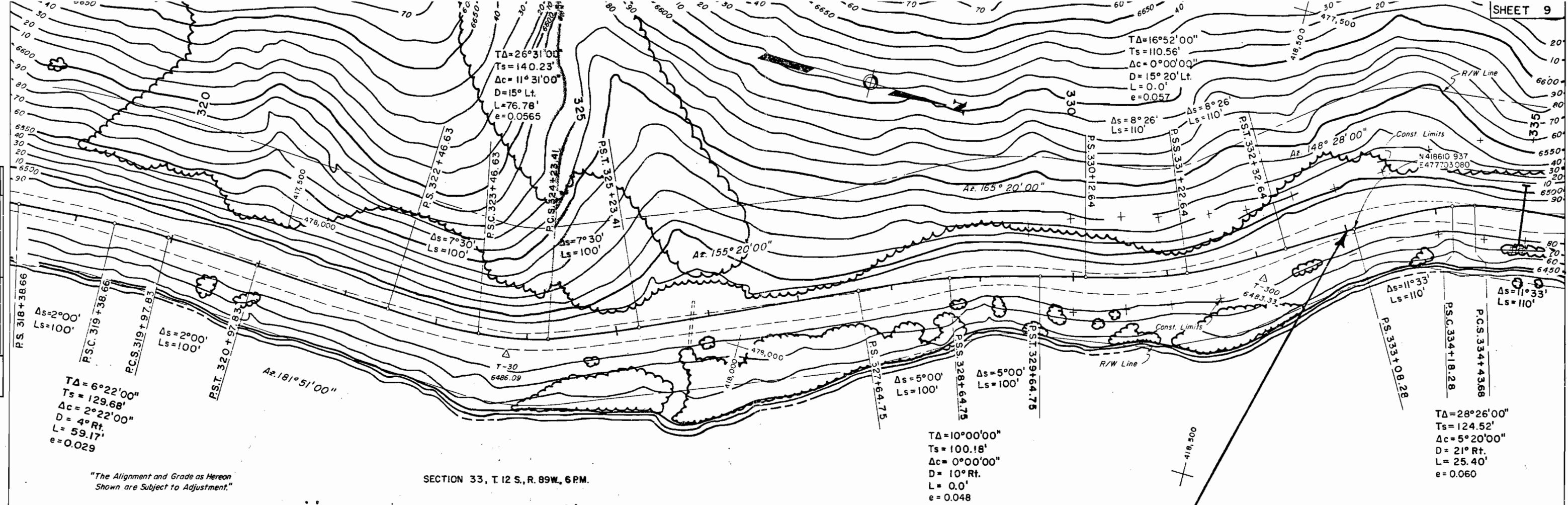


PLAN

DATE	
BY	
SURVEYED	
PLOTTED	
ALIGNED	
CHECKED	
NOTE BOOK NO.	

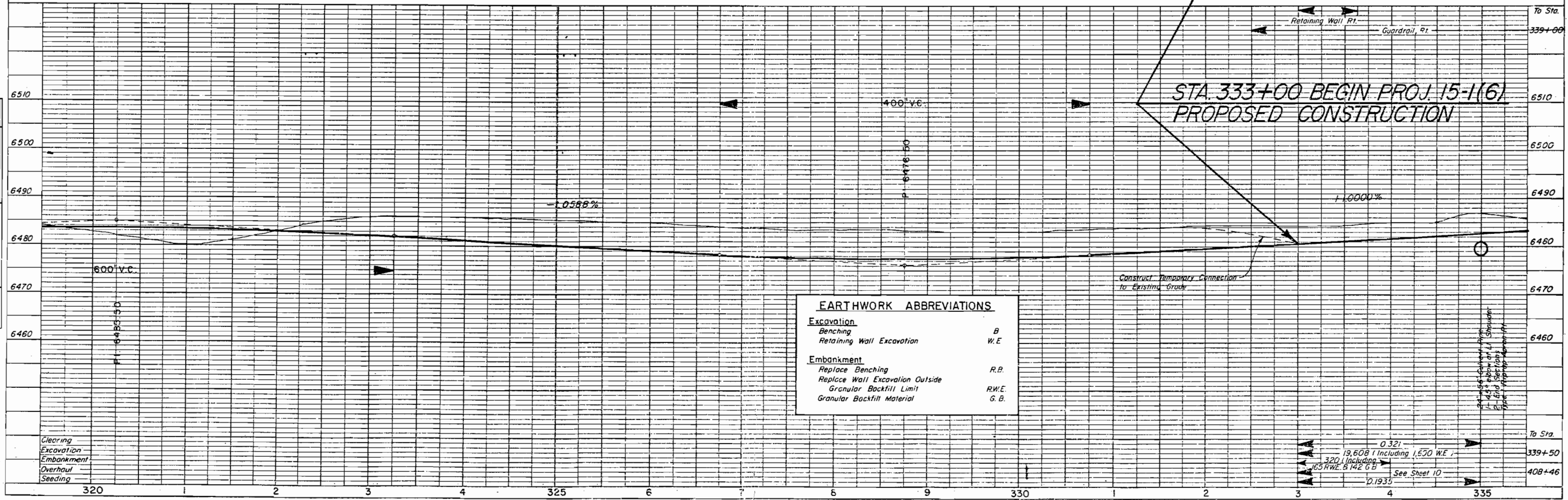
PROFILE

DATE	
BY	
SURVEYED	
PLOTTED	
CHECKED	
NOTE BOOK NO.	
STRUCTURE NOTATIONS CHND	



"The Alignment and Grade as Hereon Shown are Subject to Adjustment."

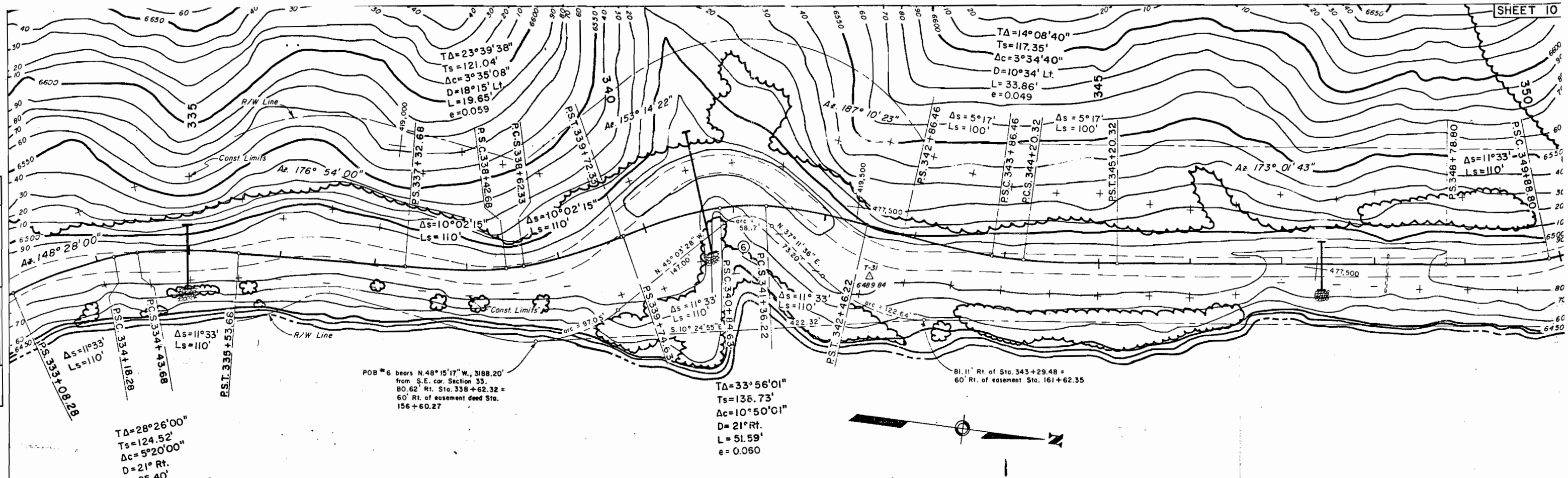
SECTION 33, T. 12 S., R. 89W., 6 PM.



EARTHWORK ABBREVIATIONS

Excavation	
Benching	B
Retaining Wall Excavation	W.E
Embankment	
Replace Benching	R.B.
Replace Wall Excavation Outside	R.W.E
Granular Backfill Limit	R.W.E
Granular Backfill Material	G.B.

PLAN	DATE
SURVEYED PLOTTED CHECKED RT. OF WAY CHECKED NO.	

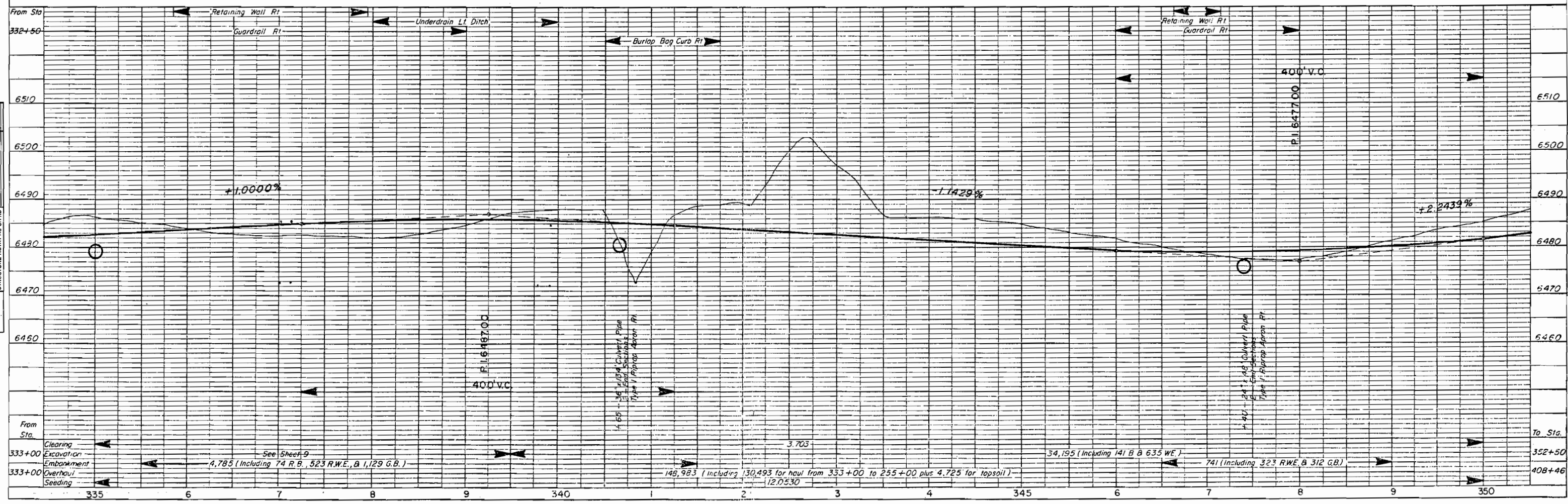


"The Alignment and Grade as Hereon Shown are Subject to Adjustment"

6 Bureau of Reclamation

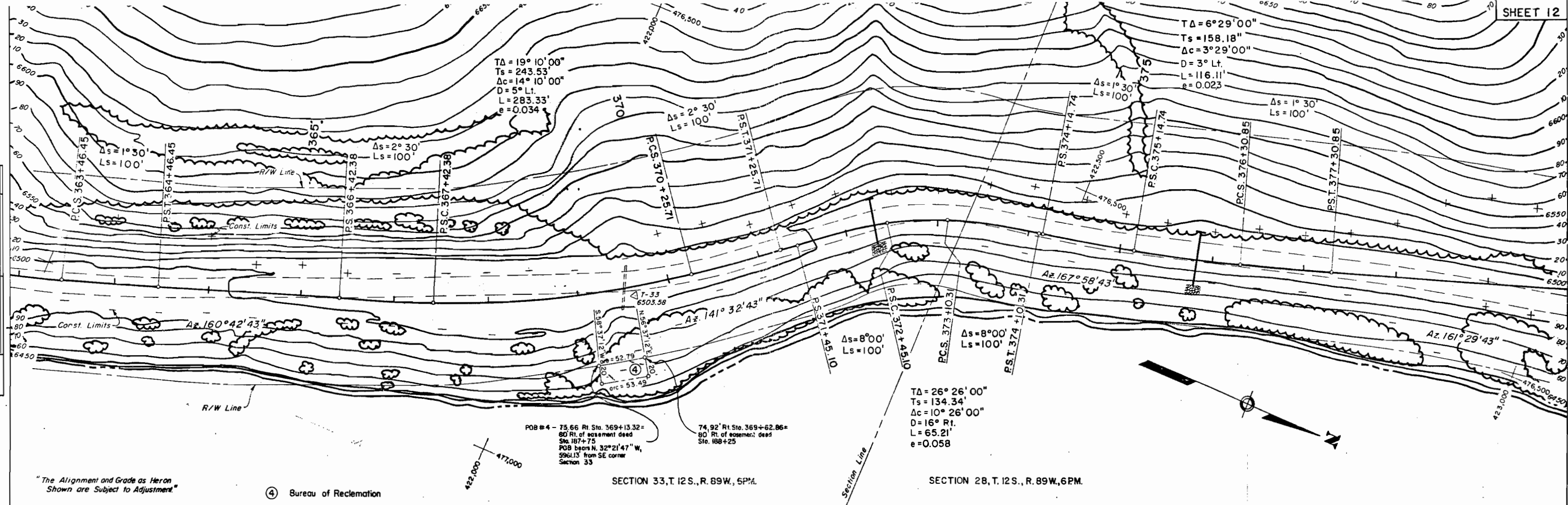
SECTION 33, T. 12 S., R. 89 W., 6 P.M.

PROFILE	DATE
SURVEYED PLOTTED CHECKED GRADES CHECKED STRUCTURE NOTATIONS CH'NGD NO.	



DATE	
BY	
SURVEYED	
PLOTTED	
ALIGNED	
CHECKED	
NOTE BOOK	
NO.	

DATE	
BY	
SURVEYED	
PLOTTED	
GRADES CHECKED	
STRUCTURE NOTATIONS CHKD	
NOTE BOOK	
NO.	

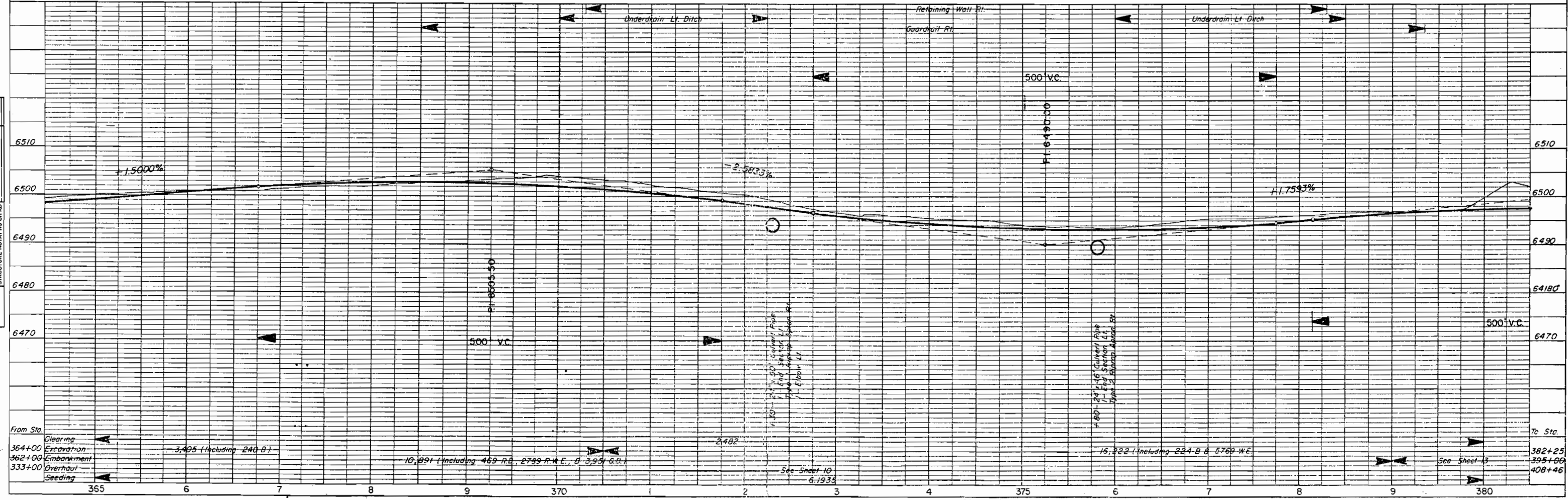


"The Alignment and Grade as Shown are Subject to Adjustment"

④ Bureau of Reclamation

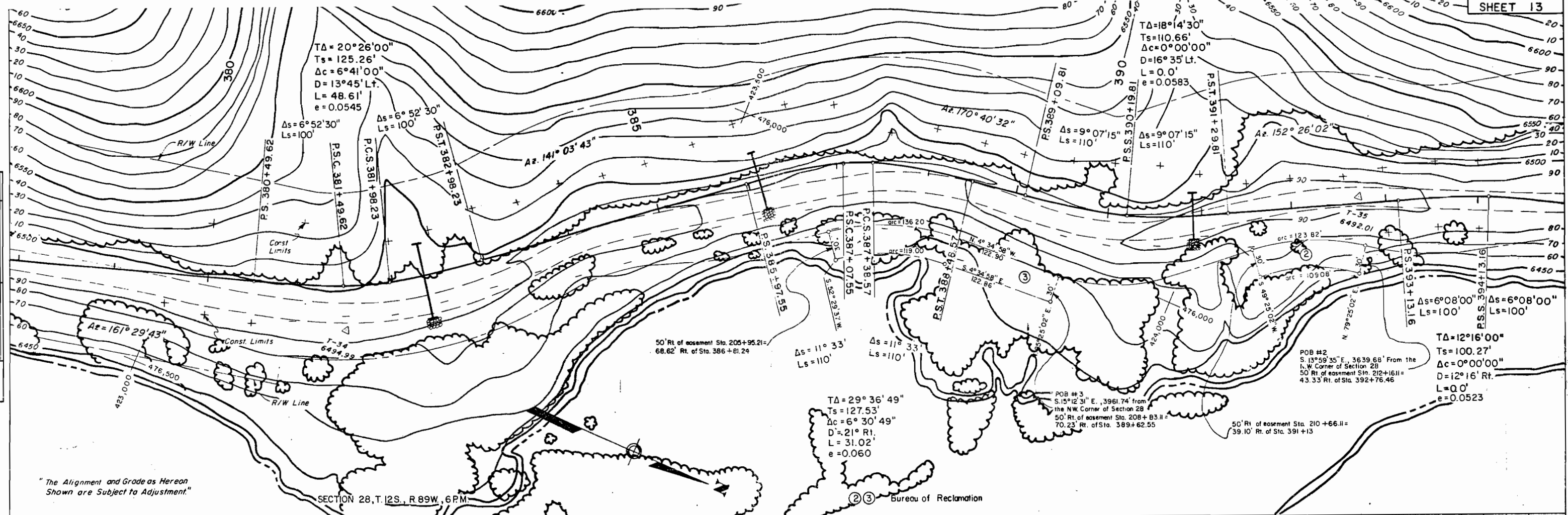
SECTION 33, T. 12 S., R. 89 W., 6 P.M.

SECTION 28, T. 12 S., R. 89 W., 6 P.M.



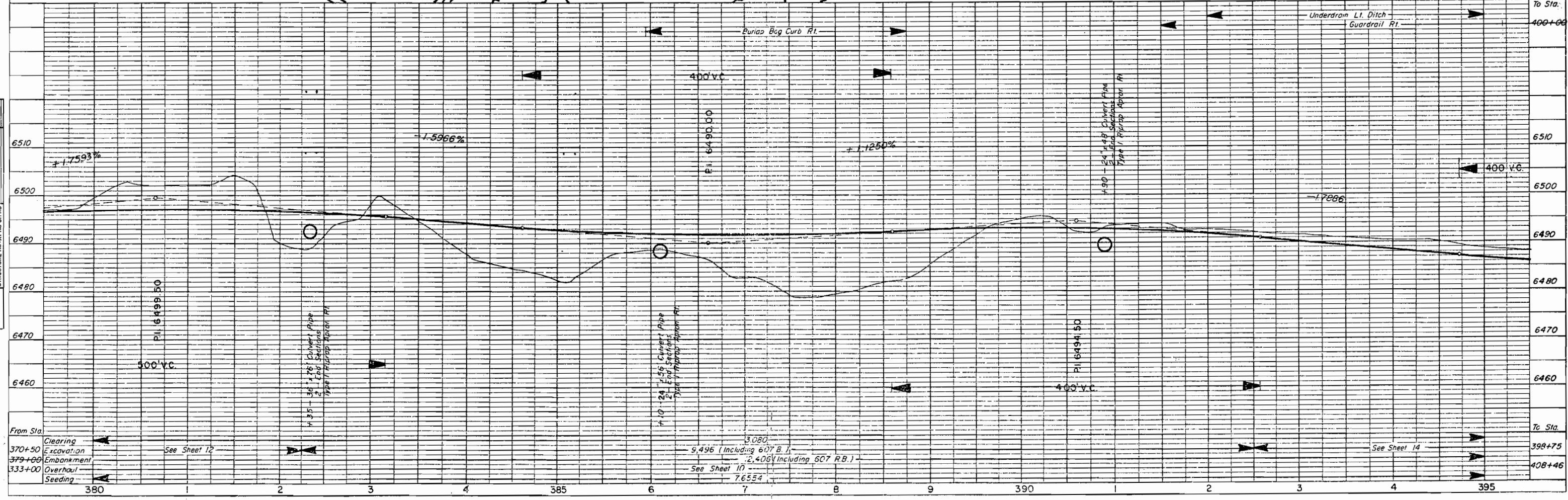
PLAN

BY	DATE
SURVEYED	
PLOTTED	
CHECKED	
NOTE BOOK NO.	
STRUCTURE NOTATIONS CHECKED	

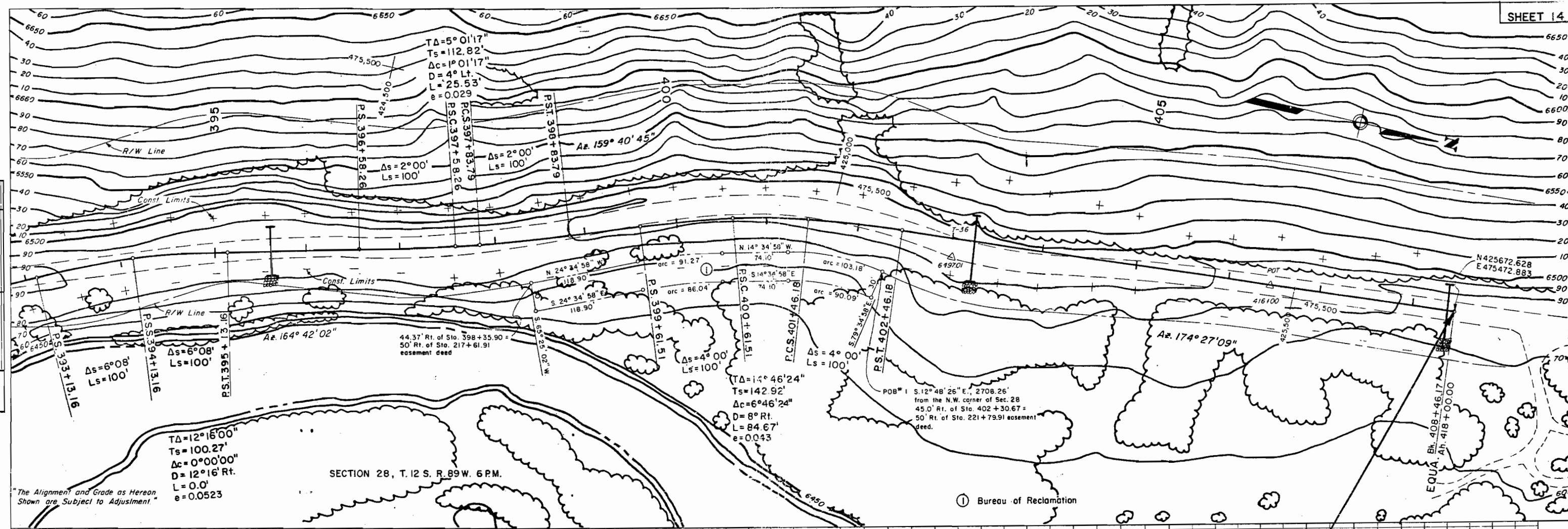


PROFILE

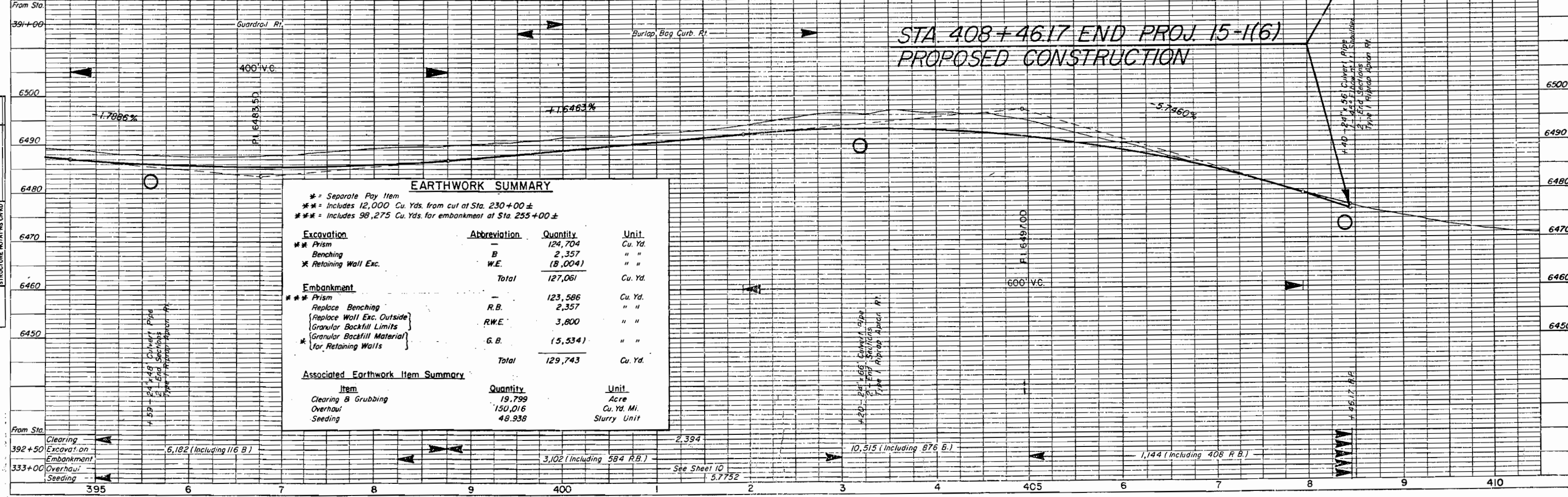
BY	DATE
SURVEYED	
PLOTTED	
CHECKED	
NOTE BOOK NO.	
STRUCTURE NOTATIONS CHECKED	



DATE
BY
PLAN
SUBMITTED
PLOTTED
ALIGNMENT CHECKED
NOTE BOOK
NO. R.I. OF WAY CHECKED



DATE
BY
PROFILE
SUBMITTED
PLOTTED
GRADES CHECKED
NOTE BOOK
NO. STRUCTURE NOTATIONS CHND



EARTHWORK SUMMARY

* = Separate Pay Item
 ** = Includes 12,000 Cu. Yds. from cut at Sta. 230+00 ±
 *** = Includes 98,275 Cu. Yds. for embankment at Sta. 255+00 ±

Excavation	Abbreviation	Quantity	Unit
** Prism	-	124,704	Cu. Yd.
Benching	B	2,357	" "
* Retaining Wall Exc.	W.E.	(18,004)	" "
Total		127,061	Cu. Yd.
Embankment	Abbreviation	Quantity	Unit
*** Prism	-	123,586	Cu. Yd.
Replace Benching	R.B.	2,357	" "
{ Replace Wall Exc. Outside Granular Backfill Limits	R.W.E.	3,800	" "
{ Granular Backfill Material for Retaining Walls	G.B.	(5,534)	" "
Total		129,743	Cu. Yd.

Associated Earthwork Item Summary

Item	Quantity	Unit
Clearing & Grubbing	19.799	Acre
Overhaul	150,016	Cu. Yd. Mi.
Seeding	48.938	Slurry Unit

From Sta. 391+00
 Guardrail Rt.
 Burlap Bag Curb Rt.
 400' v.c.
 P.I. 6483.50
 4.59 - 24" x 36" Culvert Pipe
 5 - End Sections
 Type 1 Riprap Abutment
 4.20 - 24" x 36" Culvert Pipe
 2 - End Sections
 Type 1 Riprap Abutment
 4.40 - 24" x 36" Culvert Pipe
 2 - End Sections
 Type 1 Riprap Abutment
 600' v.c.
 P.I. 6497.00
 2.394
 10,515 (Including 876 B.)
 1,144 (Including 408 R.B.)
 3,102 (Including 584 R.B.)
 6,182 (Including 116 B.)
 See Sheet 10
 5.7752