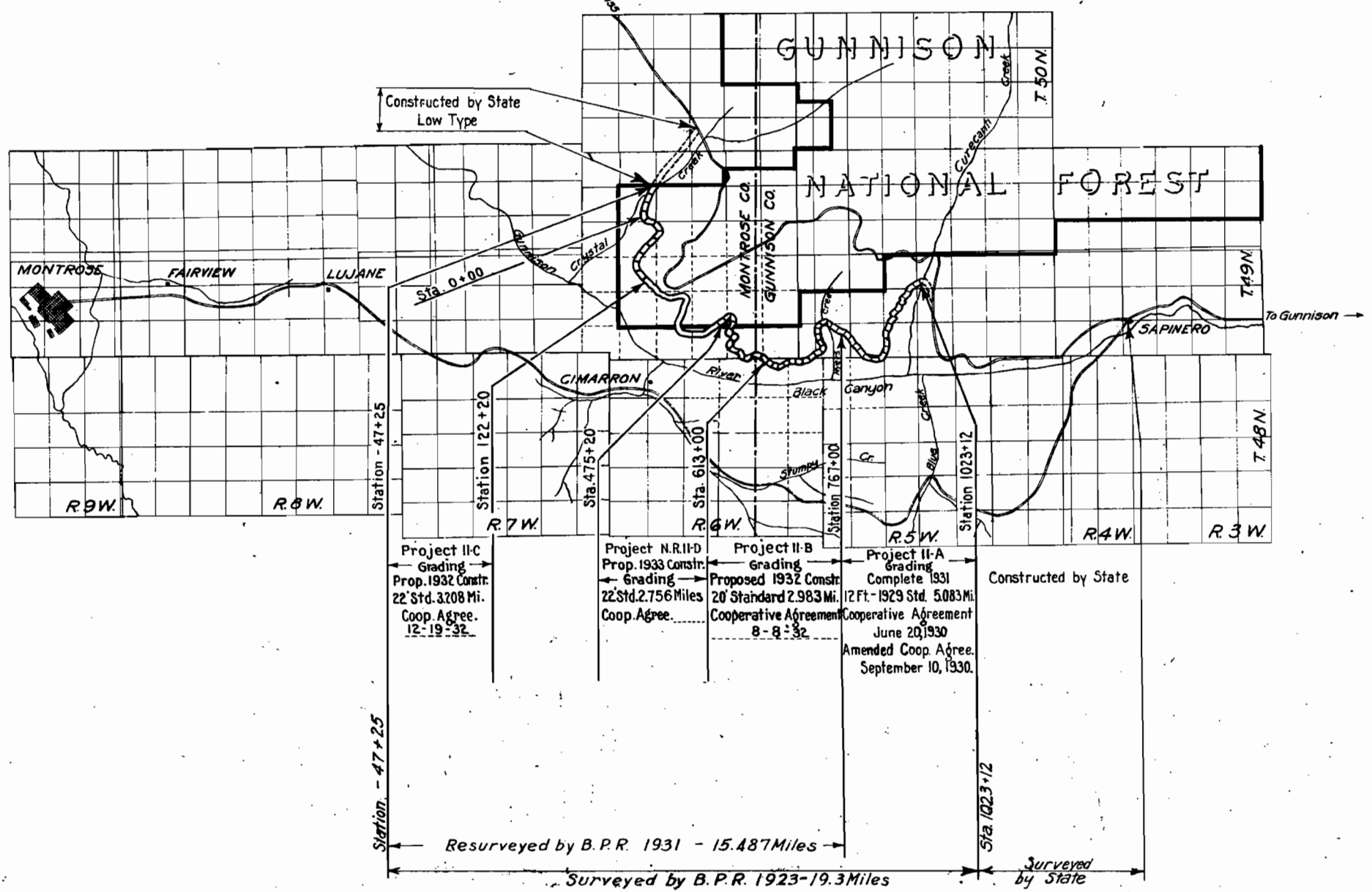
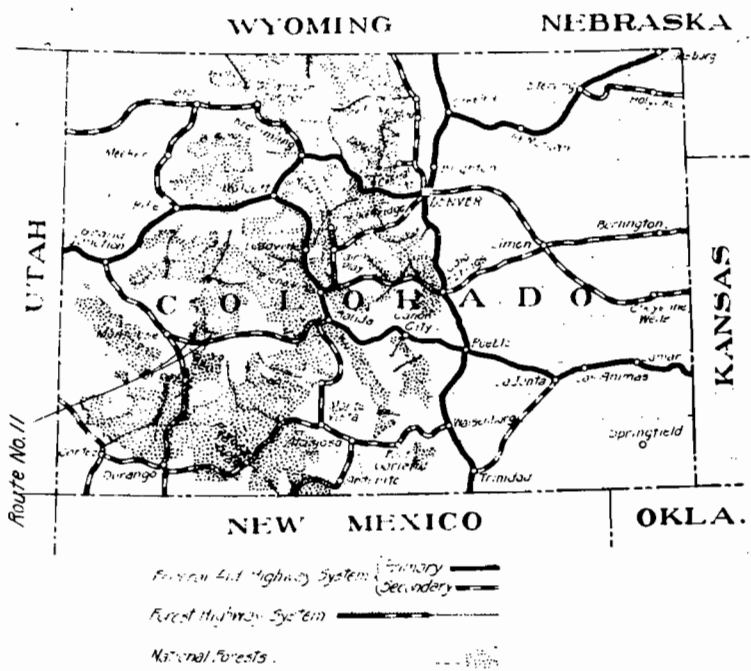


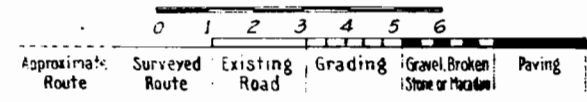
UNITED STATES DEPARTMENT OF AGRICULTURE
BUREAU OF PUBLIC ROADS

PLANS FOR PROPOSED
PROJECT "N.R." II-D
ROUTE II BLACK MESA (Road 46)
CURECANTI CREEK TO CRYSTAL CREEK
20 MILES CLASS 2
COLORADO FOREST HIGHWAY SYSTEM
GUNNISON NATIONAL FOREST
MONTROSE AND GUNNISON COUNTIES
COLORADO

SHEET NO.	DESCRIPTION	STATION TO STATION
1	Title sheet	
2	Typical Sections	
3	Summary	
21-26	Plan and Profile	475+20 613+00
Rev. D3	STD-117 Std. C.R.M. Headwalls	
113-SD-129	Std. Misc. Structures	
D3-SP-212	Conc. Box Culvert	
102 To Rev 124	Cross Sections	



INDEX MAP
Scale Miles

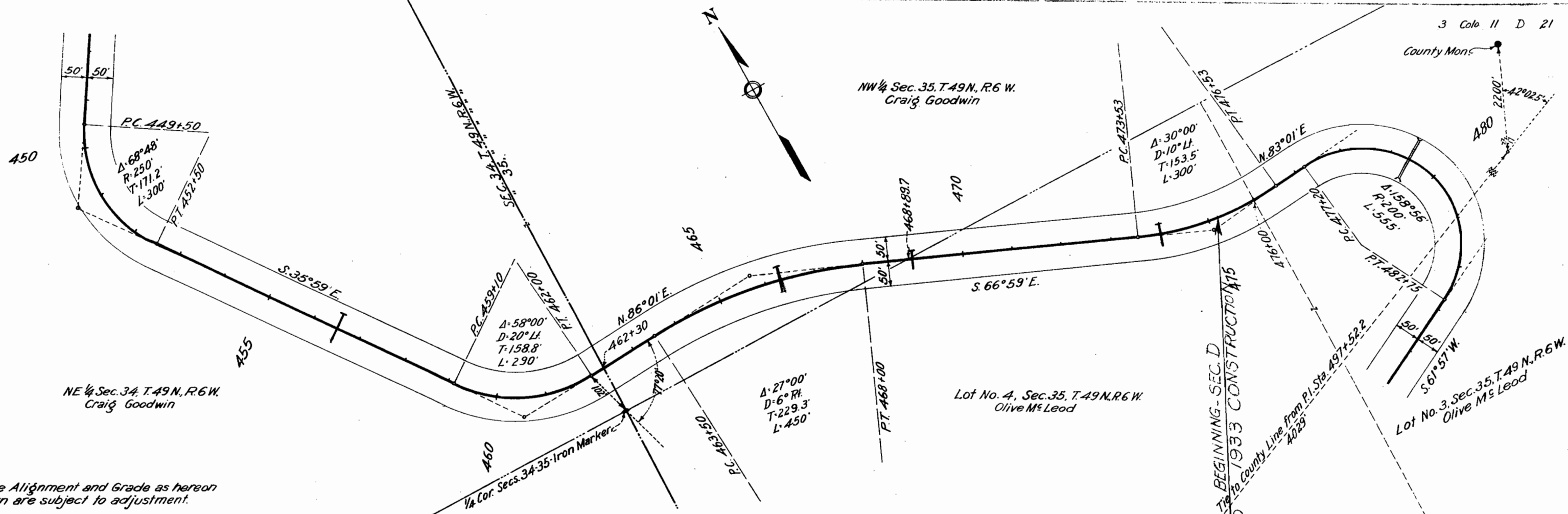


APPROVED: _____ Date _____ 19__
ACTING DISTRICT ENGINEER,
U.S. BUREAU OF PUBLIC ROADS

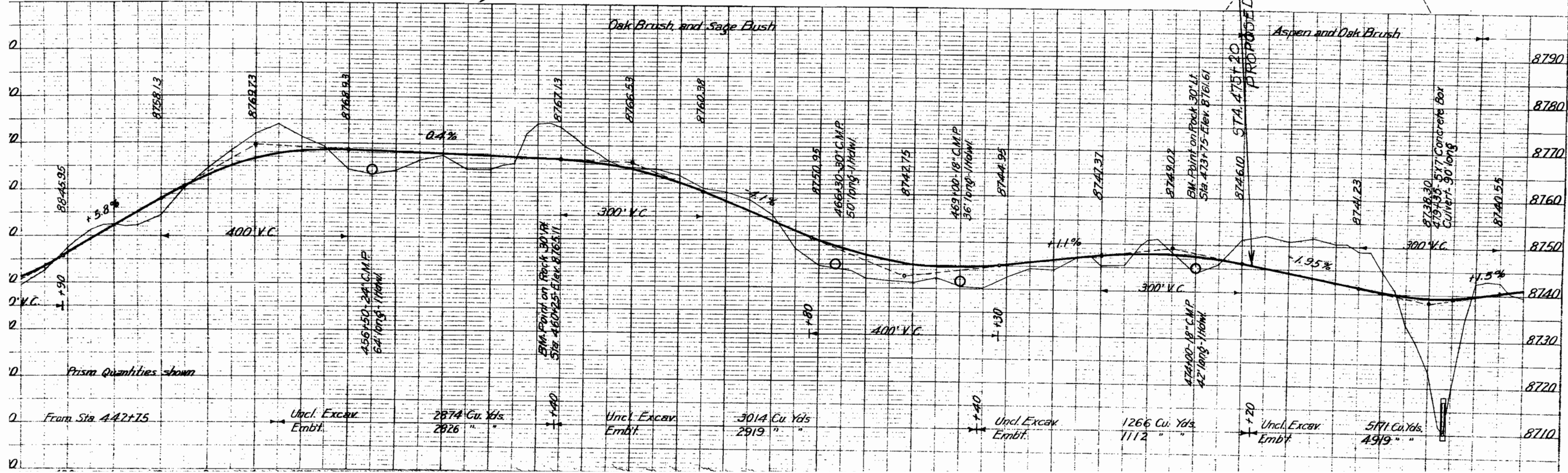
APPROVED: _____ Date _____ 19__
REGIONAL FORESTER,
U.S. FOREST SERVICE

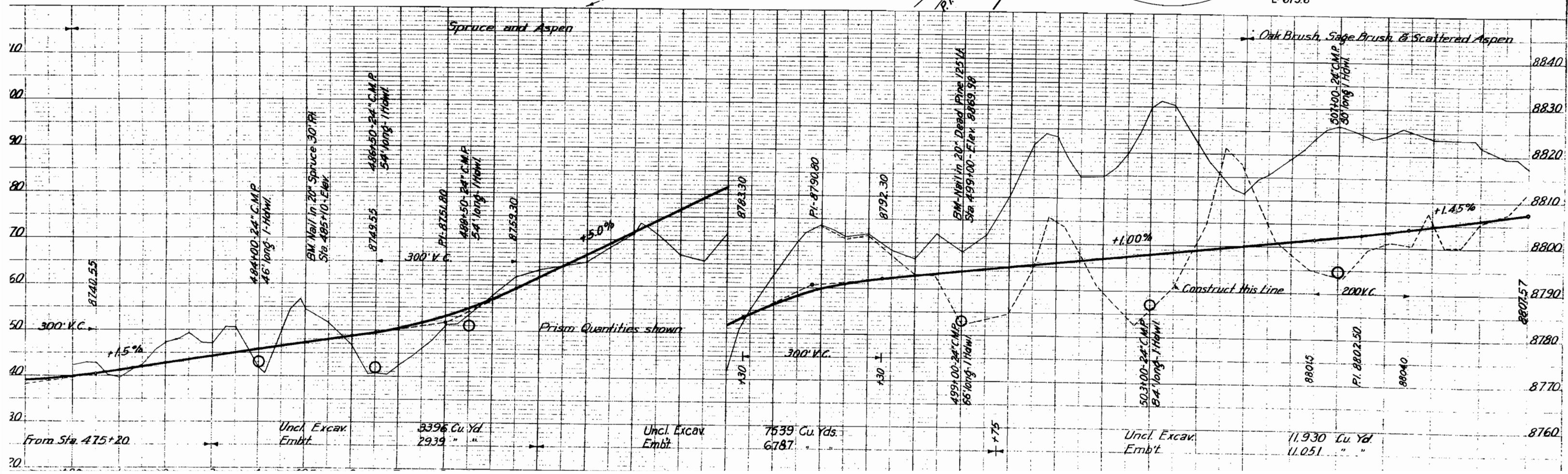
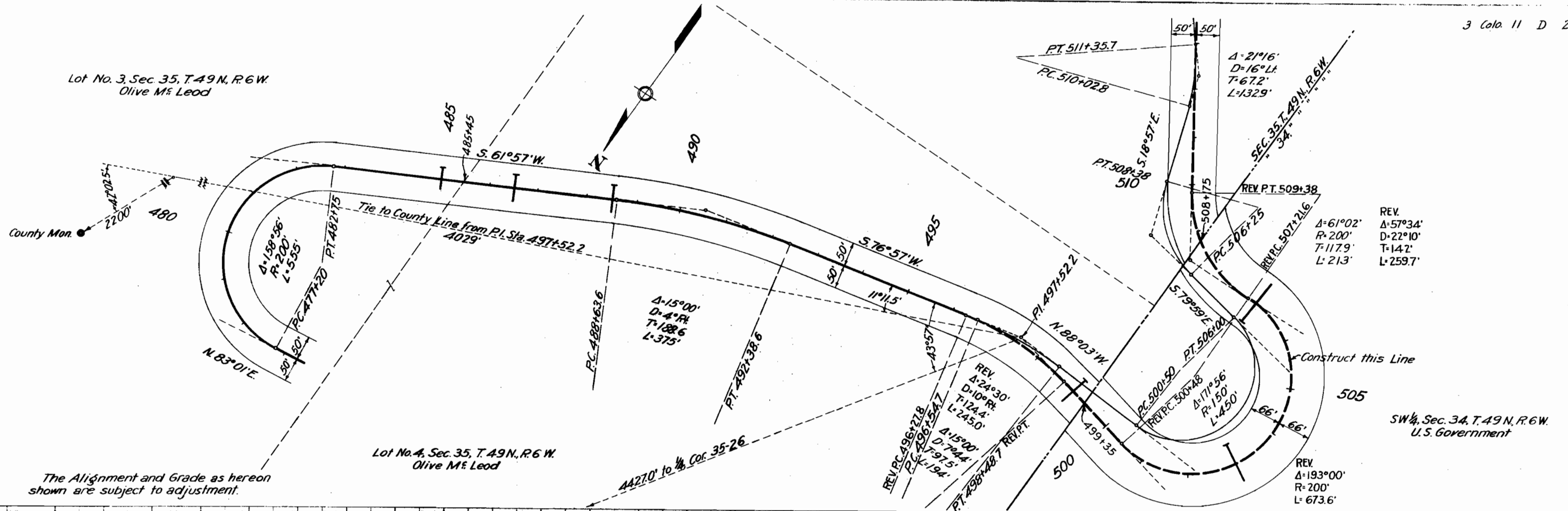
APPROVED: _____ Date _____ 19__
STATE HIGHWAY ENGINEER,
STATE OF COLORADO

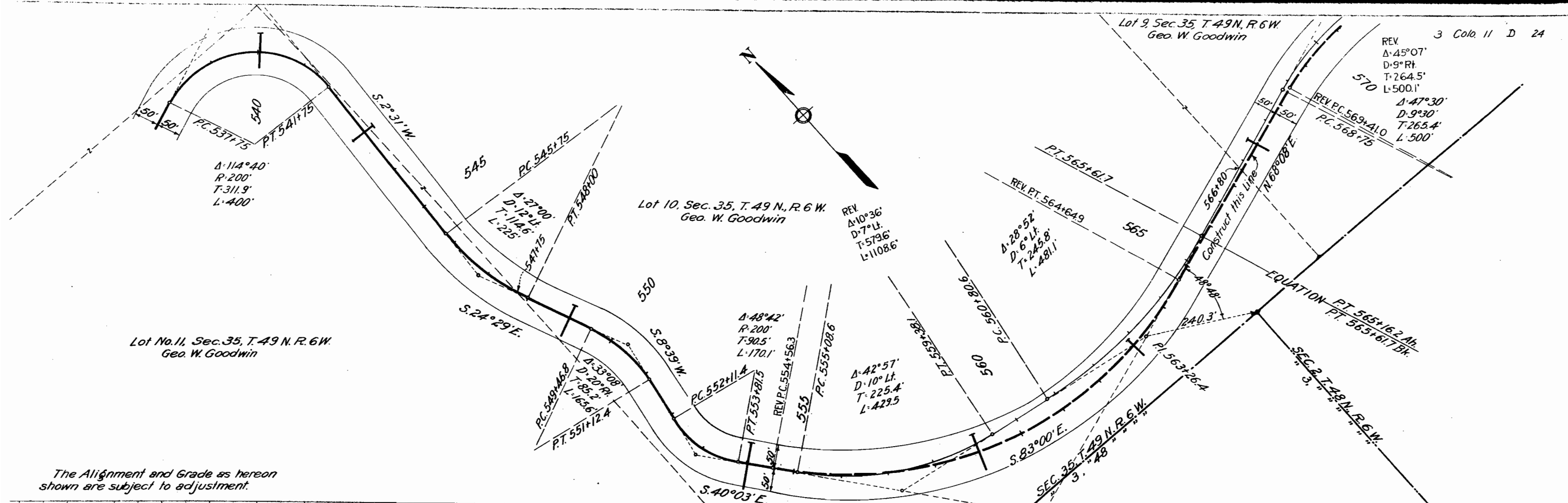
AUG. 1, 1930



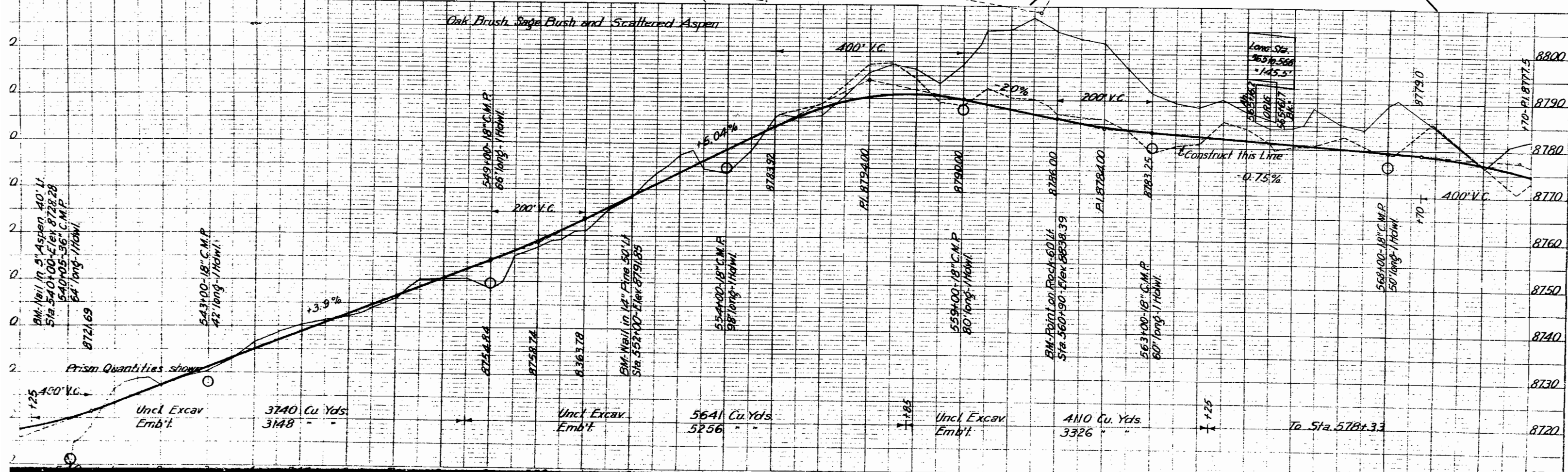
The Alignment and Grade as hereon shown are subject to adjustment.

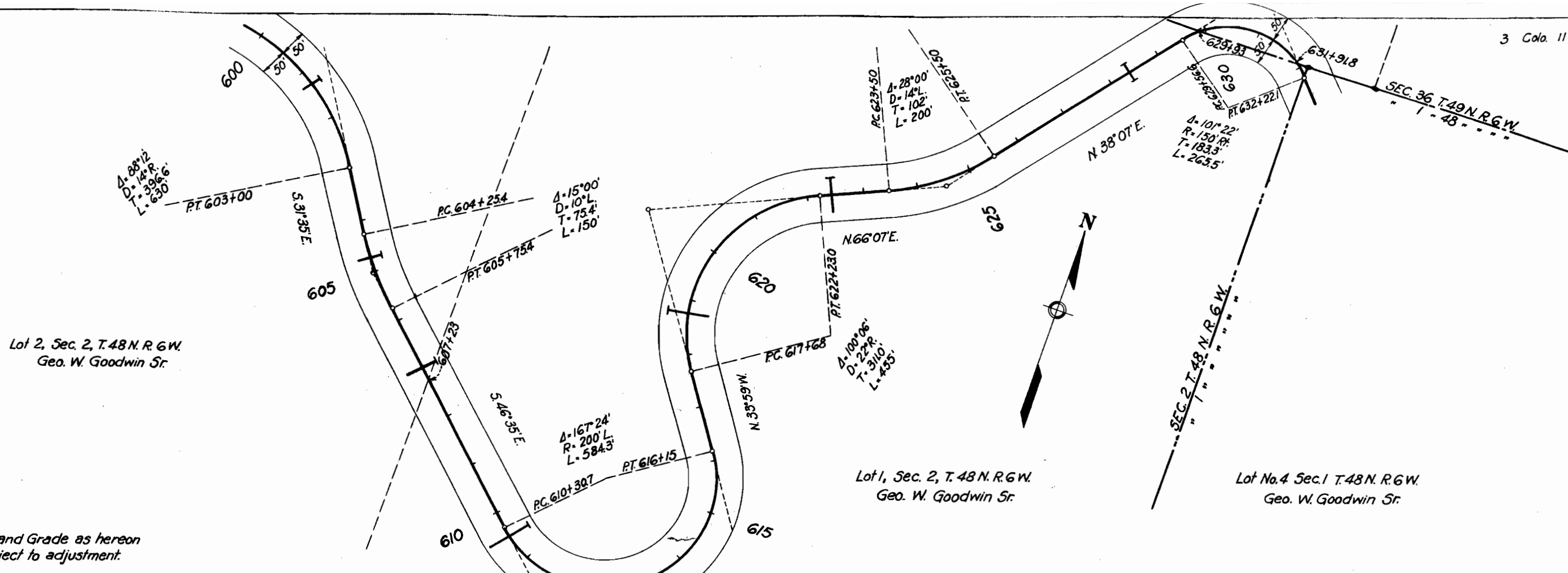






The Alignment and Grade as hereon shown are subject to adjustment.





Lot 2, Sec. 2, T. 48 N. R. 6 W.
Geo. W. Goodwin Sr.

Lot 1, Sec. 2, T. 48 N. R. 6 W.
Geo. W. Goodwin Sr.

Lot No. 4 Sec. 1 T. 48 N. R. 6 W.
Geo. W. Goodwin Sr.

The Alignment and Grade as hereon shown are subject to adjustment.

