

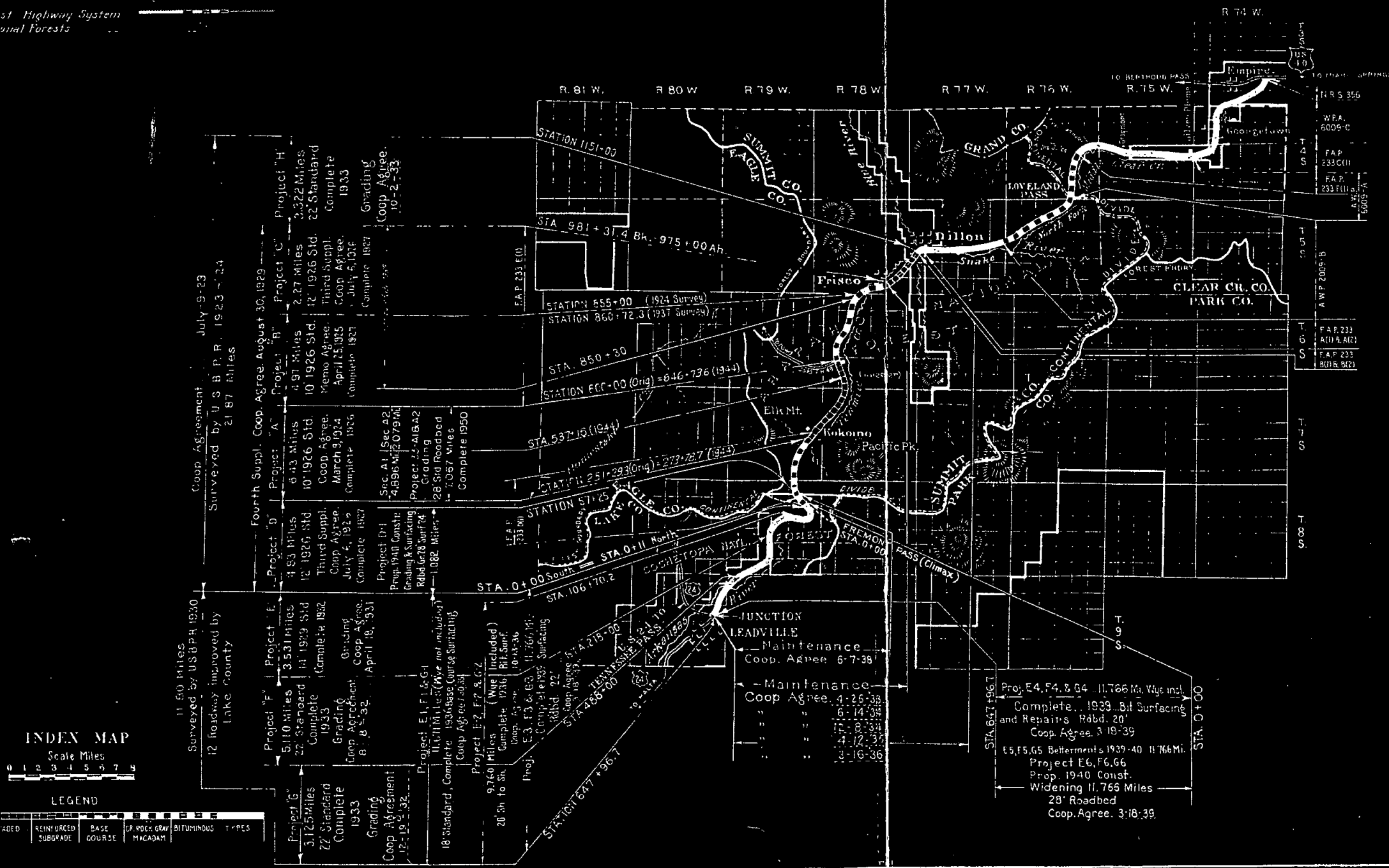
FEDERAL WORKS AGENCY  
PUBLIC ROADS ADMINISTRATION

AS CONSTRUCTED  
PROJECT 33-A1 & A2  
ROUTE 33, LOVELAND - FREMONT PASS HIGHWAY  
JUNCTION OF U.S. 40, VIA DILLON, TO JUNCT. U.S. 24  
70 MILES CLASS 1  
COLORADO FOREST HIGHWAY SYSTEM  
ARAPAHO & COCHITOPA NAT'L. FOREST  
CLEAR CREEK, LAKE & SUMMIT COUNTIES  
COLORADO

DIV.	STATE	ROUTE	SECTION	SHEET NO.	TOTAL SHEETS
9	COLO.	33	A1 & A2	1	

INDEX TO SHEETS		
SHEET NO.	DESCRIPTION	STATION
1	Title Sheet	
2	Typical Sections	
3	Summary	
12 - 24	Plan & Profile	278+49.4 to 362+73.6
Rev. D3-Sid. 117	Std. Masonry Hdws. for C.M.P. Culv.	
Rev. D3-Sid. 129	Std. Miscellaneous Structures	
D3-Sid. 131	Std. Maintenance Posts	
D3-Sid. 142	Std. Masonry Hdws. - Large Diameter Pipe	
Rev. D3-Sid. 143	Typical Construction Signs	
D3-Sid. 166	Strutting Detail for Large Diameter C.M.P.	
D3-Sid. 139 (2nd)	Std. Concrete Box Culverts, Sta. 303+50, 323+50, 385+25, 495+90.	
D3-SP313 (2nd)	Concrete Box Culvert	362+50
1 - 46	Cross Sections	278+49.4 to 362+73.6

Primary  
Secondary  
Forest Highway System  
National Forests



FEDERAL WORKS AGENCY  
PUBLIC ROADS ADMINISTRATION  
DIVISION 5, DENVER, COLORADO

APPROVED \_\_\_\_\_ DATE \_\_\_\_\_ 19\_\_  
DIVISION ENGINEER  
BY DESIGN ENGINEER

APPROVED \_\_\_\_\_ DATE \_\_\_\_\_ 19\_\_  
DISTRICT ENGINEER

APPROVED \_\_\_\_\_ DATE \_\_\_\_\_ 19\_\_  
REGIONAL FORESTER

APPROVED \_\_\_\_\_ DATE \_\_\_\_\_ 19\_\_  
STATE HIGHWAY ENGINEER  
STATE OF COLORADO

Meredith Placer  
Deed From: Geo. Robinson  
Norma Comstock  
John W. Shireman  
Book #13 Page # (Not found)

TA = 31°33'  
Ts = 772.76'  
Δc = 25°18'  
D = 2°30' Lt.  
L = 1012.0'

Constr.  
Δ = 31°33'  
D = 1°30' Lt.  
T = 1079.1'  
L = 2103.3'

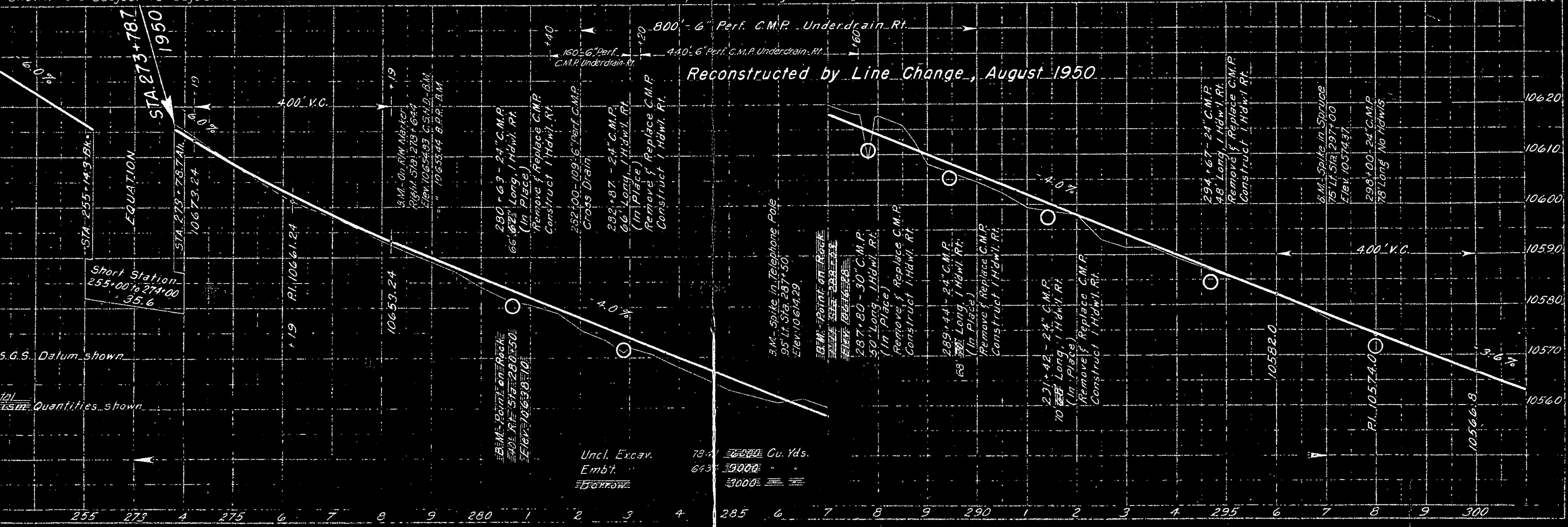
R.O.W. Recorded Book #132 Page #536  
from Climax Molybdenum 5-9-46  
Reservation of mineral rights.  
Power, Telephone, and other Utility lines  
to be removed in connection with the  
acquisition of Rights of Way.

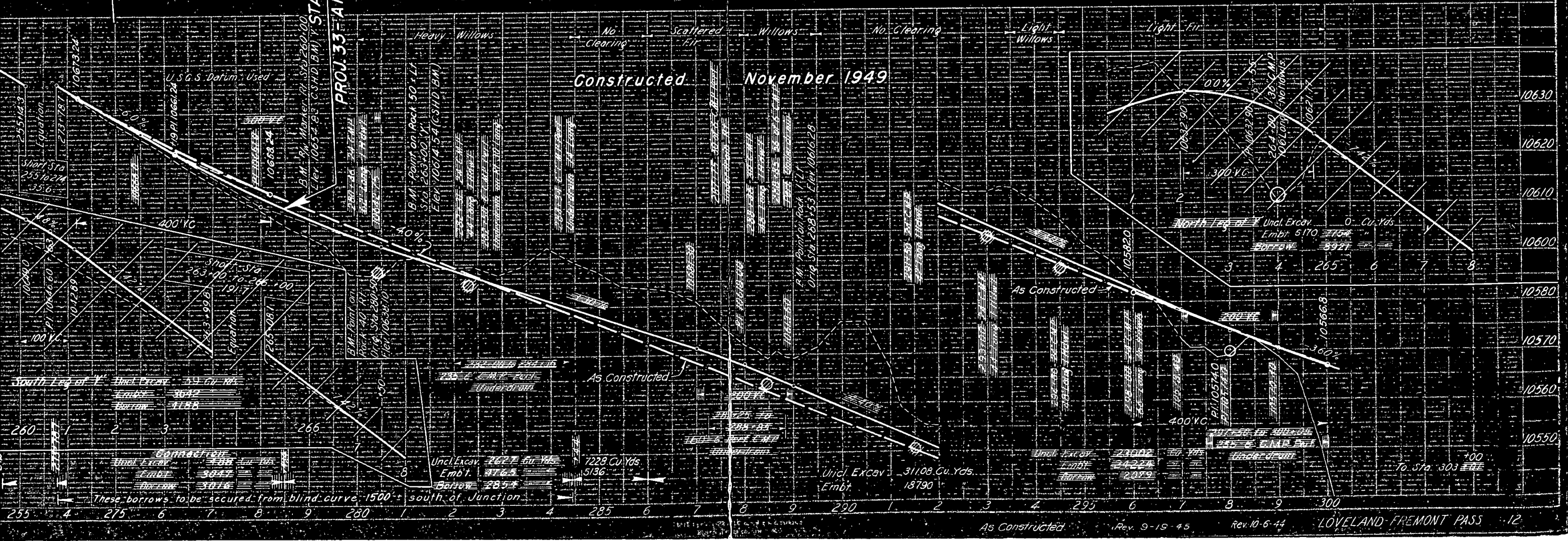
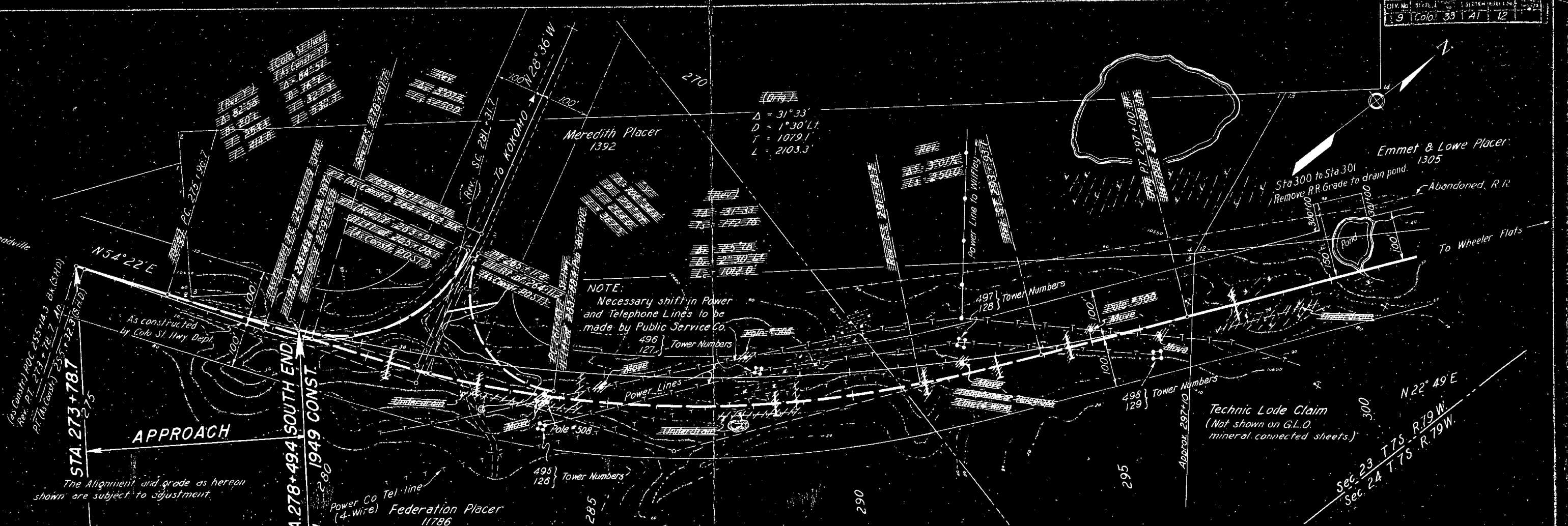
Technic Lode Claim  
(Not shown on G.L.O.  
mineral connected sheets)  
Also from W. Walter Byron  
Book #136 Page #145  
9-24-46

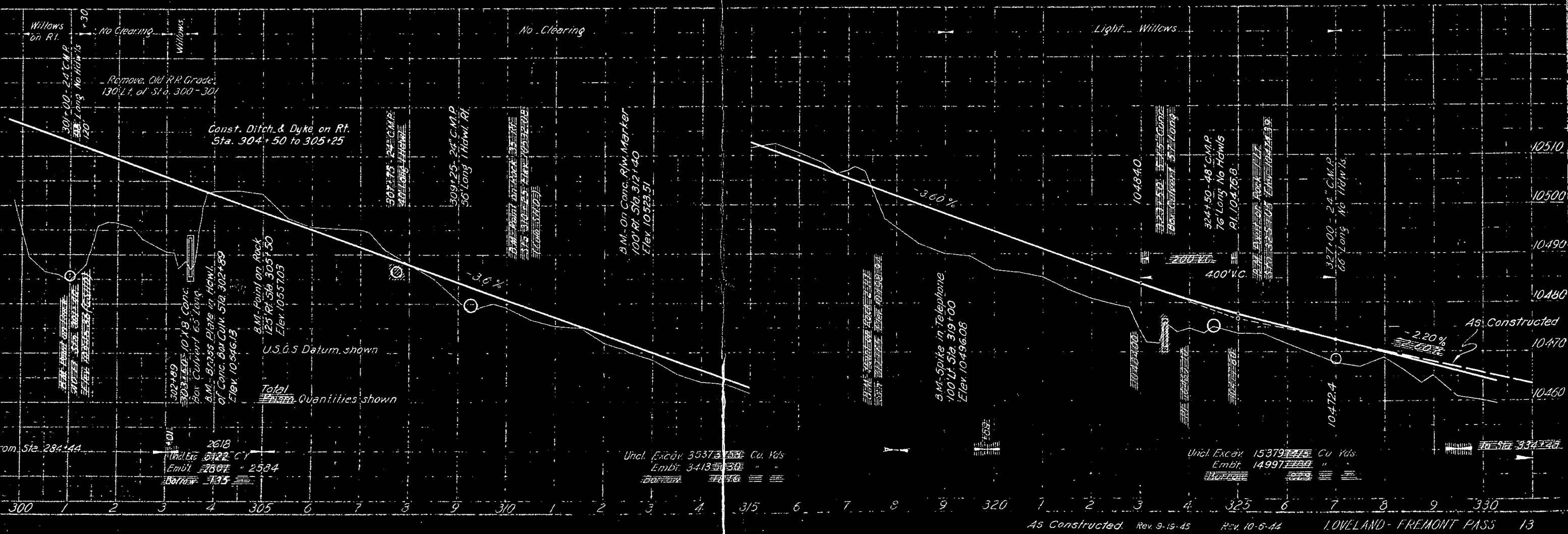
Federation Placer  
11786

Reconstructed by Line Change, August 1950

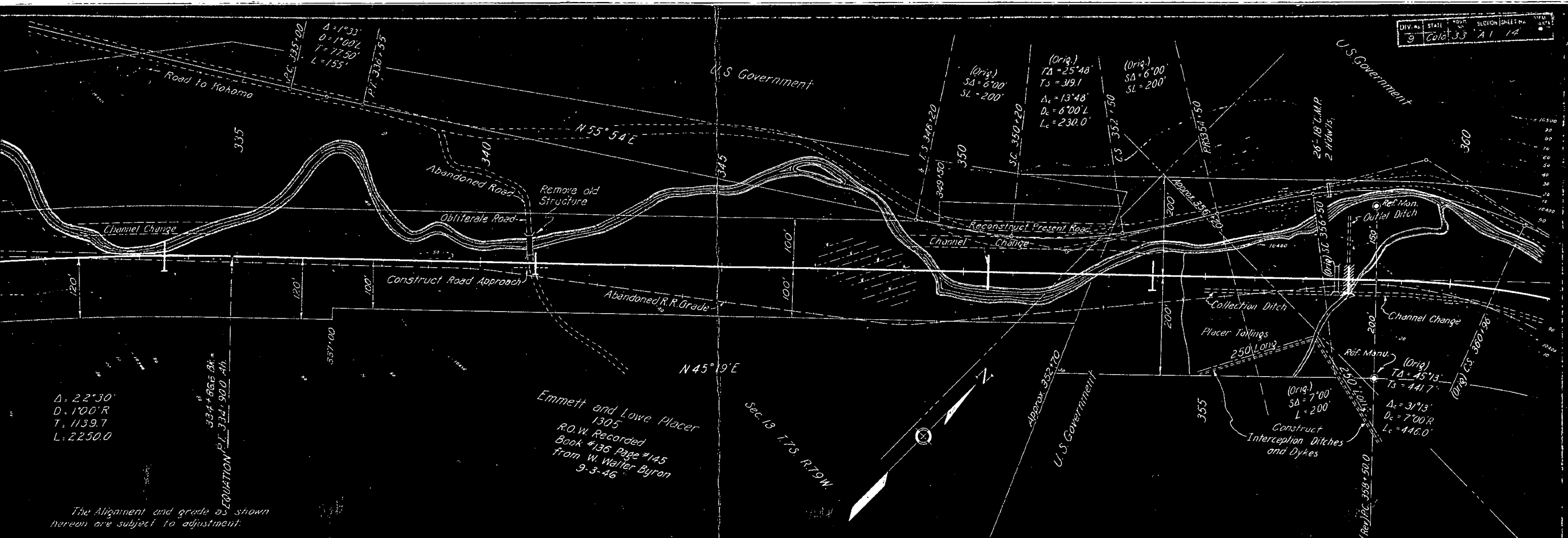
The Alignment and Grade as hereon  
shown are subject to adjustment.



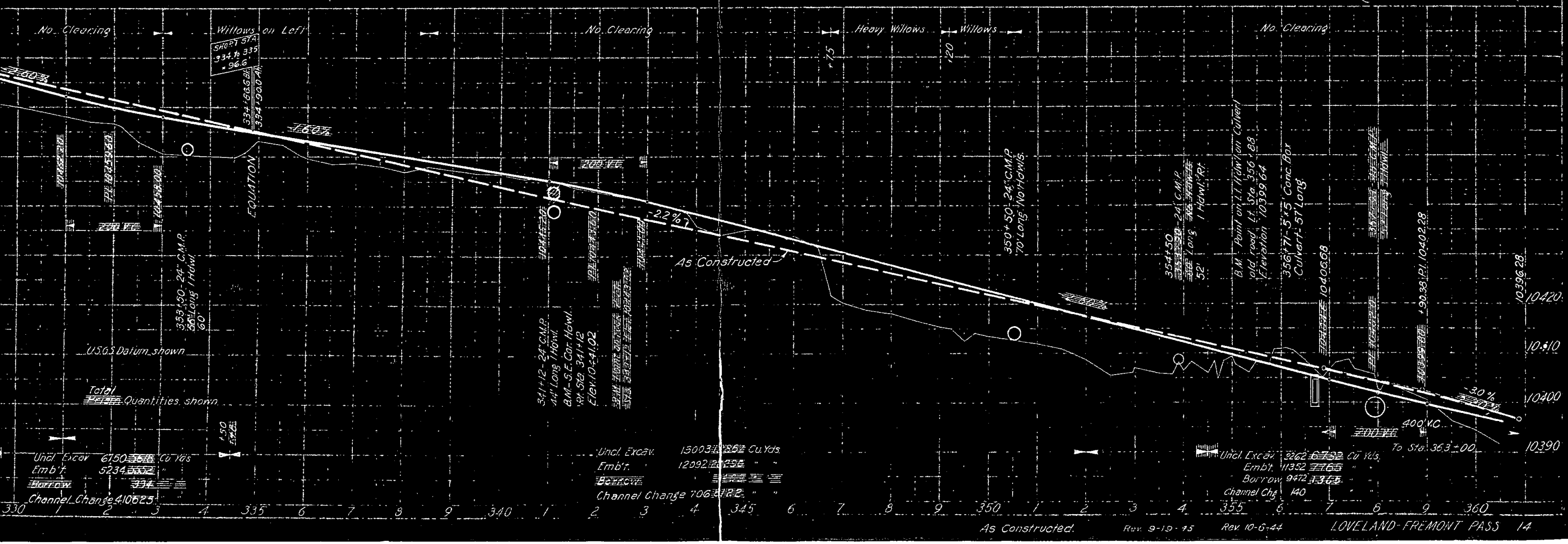




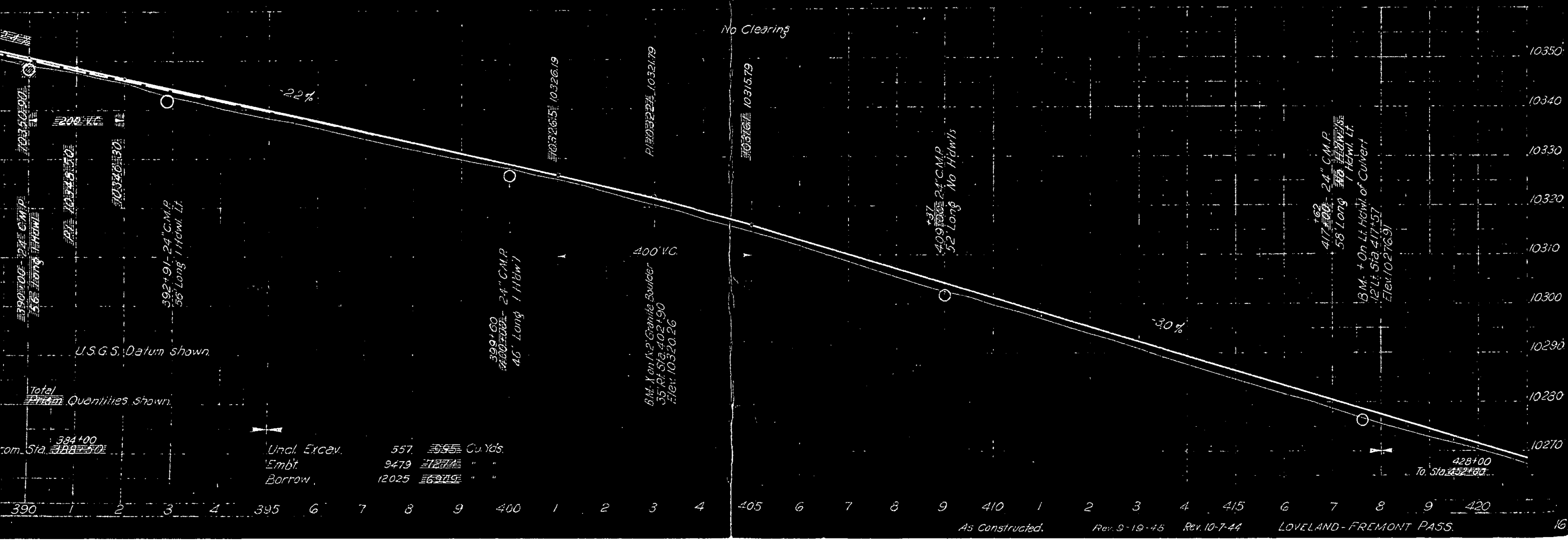
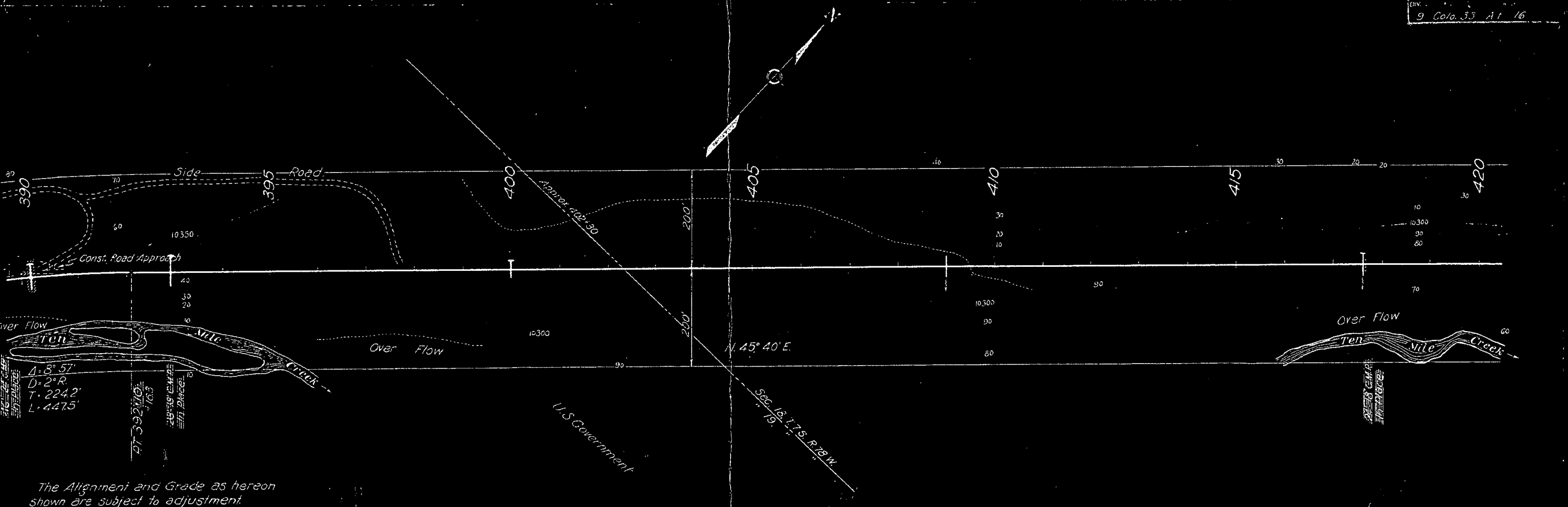


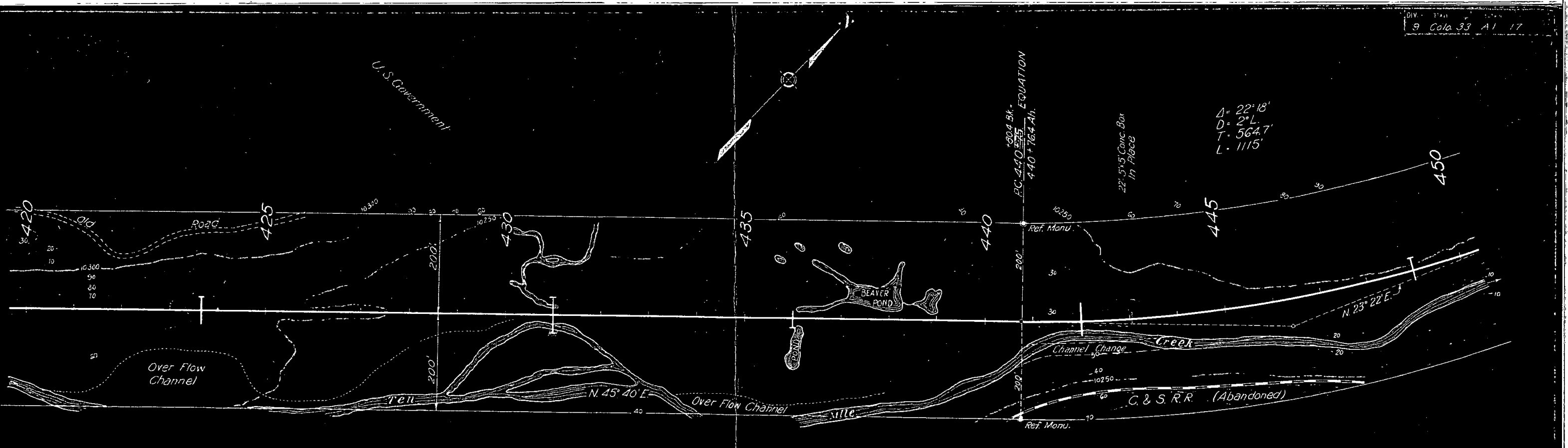


The Alignment and grade as shown hereon are subject to adjustment.

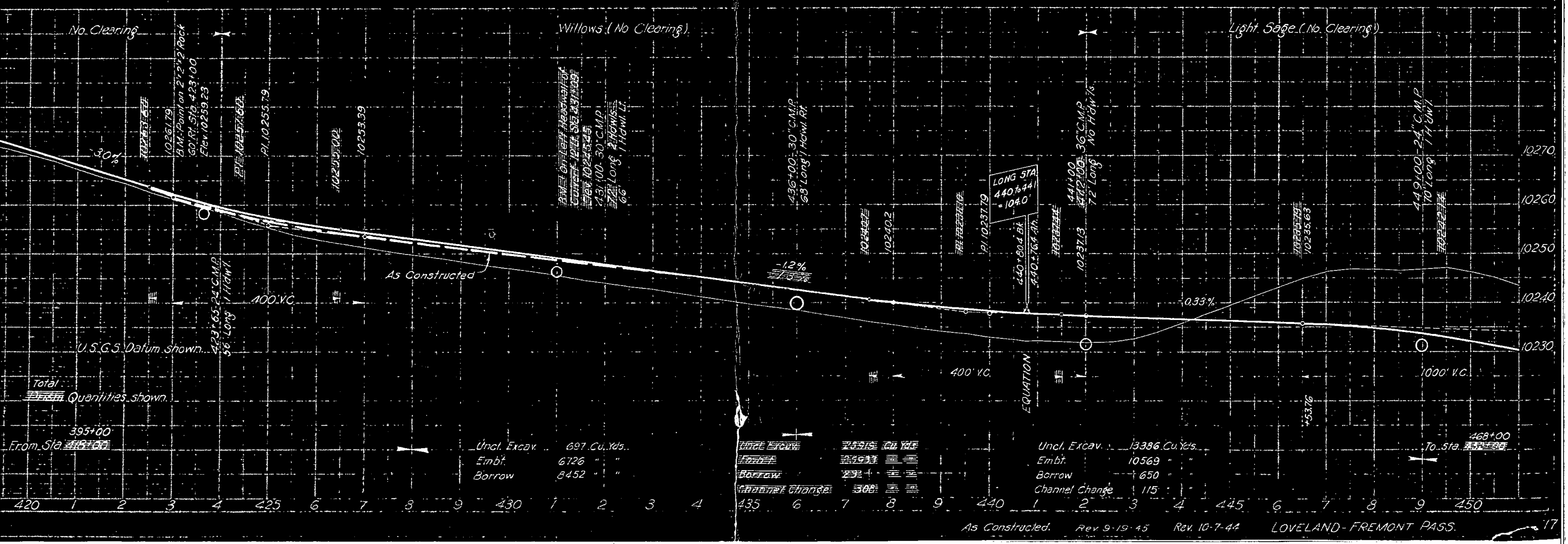




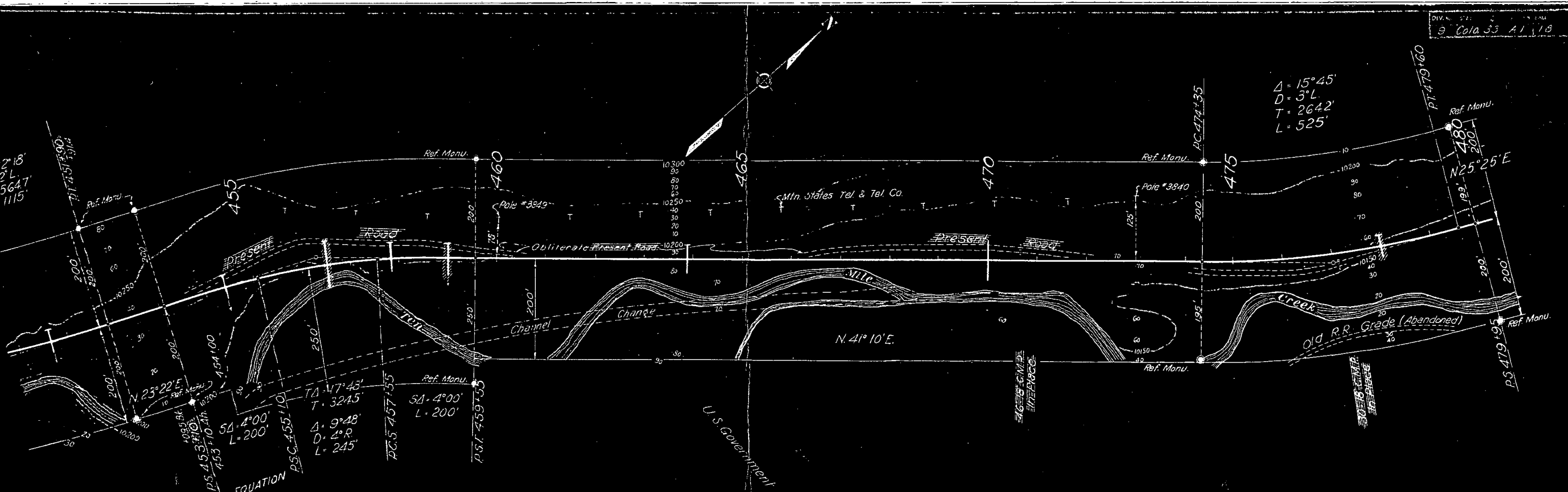




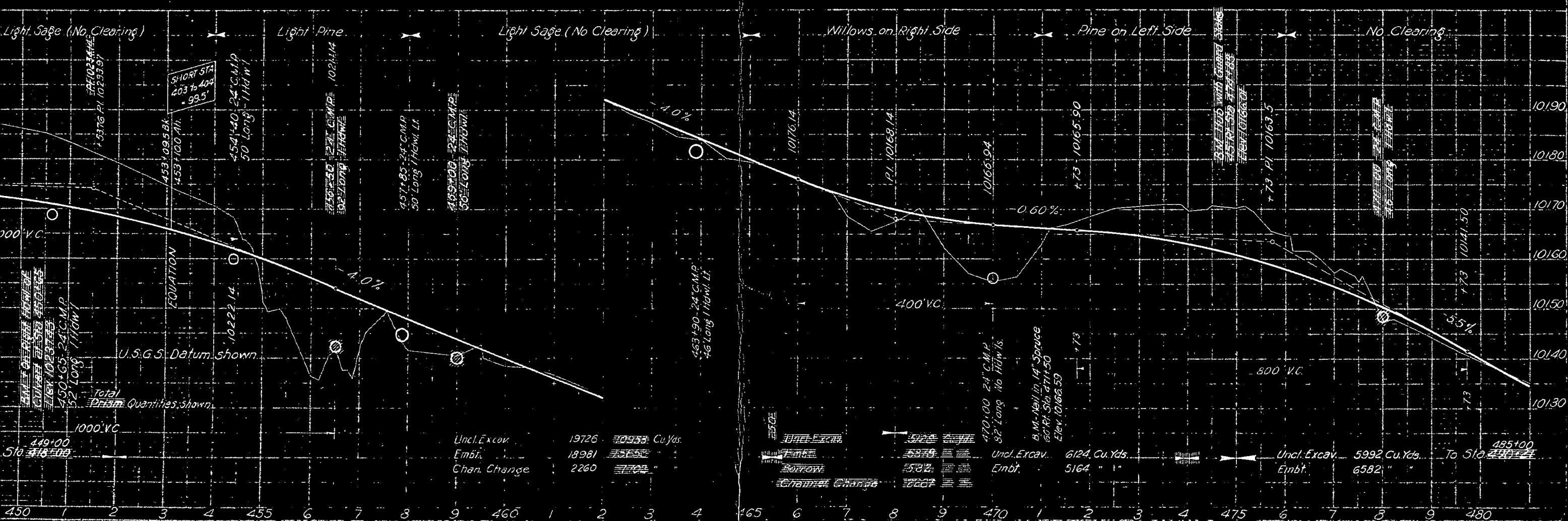
The Alignment and Grade as hereon shown are subject to adjustment.







The Alignment and Grade as hereon shown are subject to adjustment.

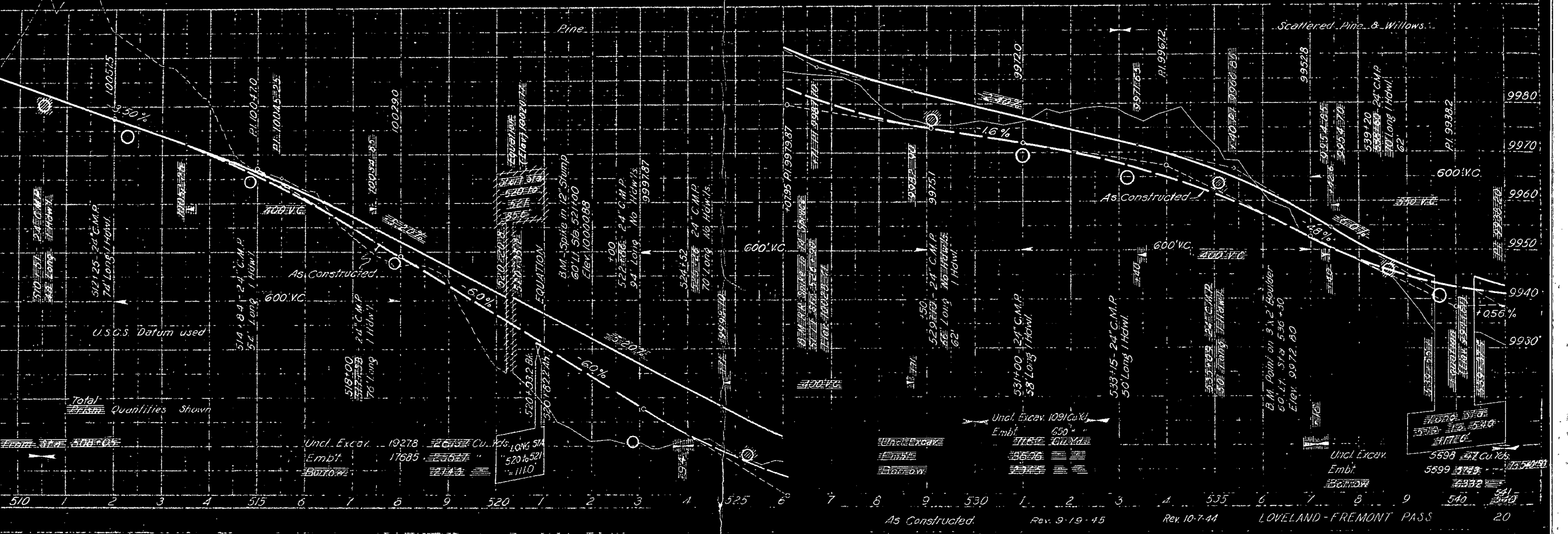


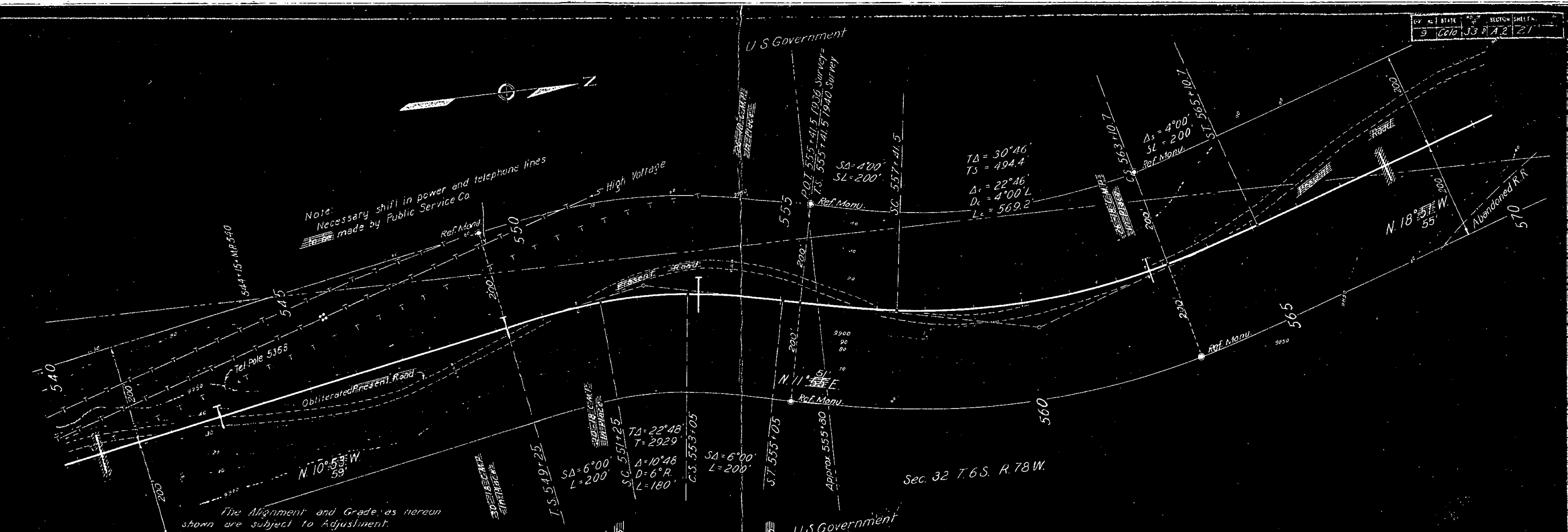
Uncl. Excav.	19726	10933 Cu. Yds.
Embt.	18981	15652 "
Chan. Change	2260	7702 "

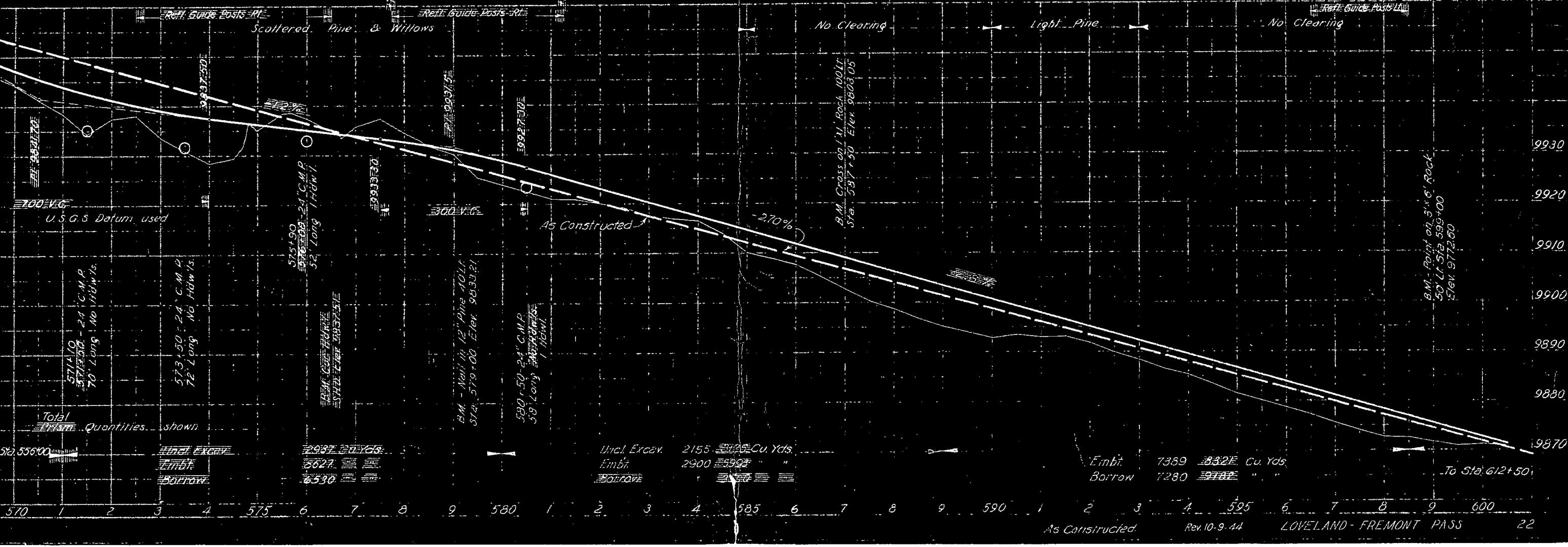
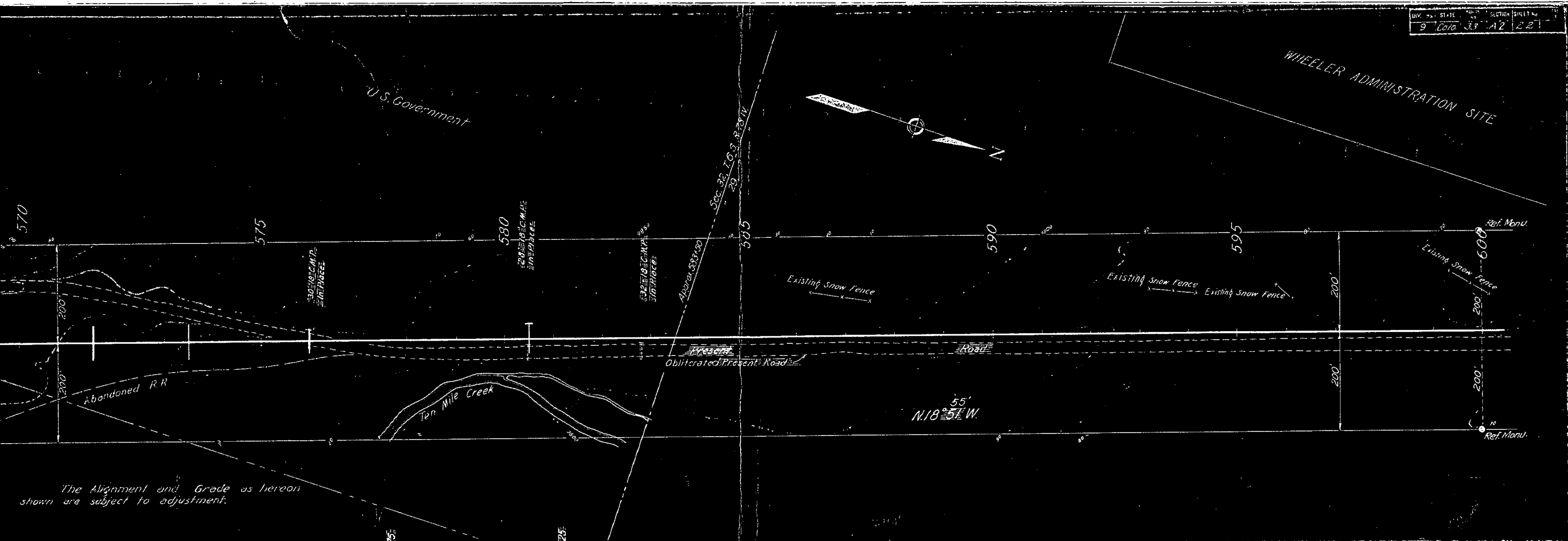
Uncl. Excav.	6124	6124 Cu. Yds.
Embt.	5164	5164 "

Uncl. Excav.	5992	5992 Cu. Yds.
Embt.	6582	6582 "

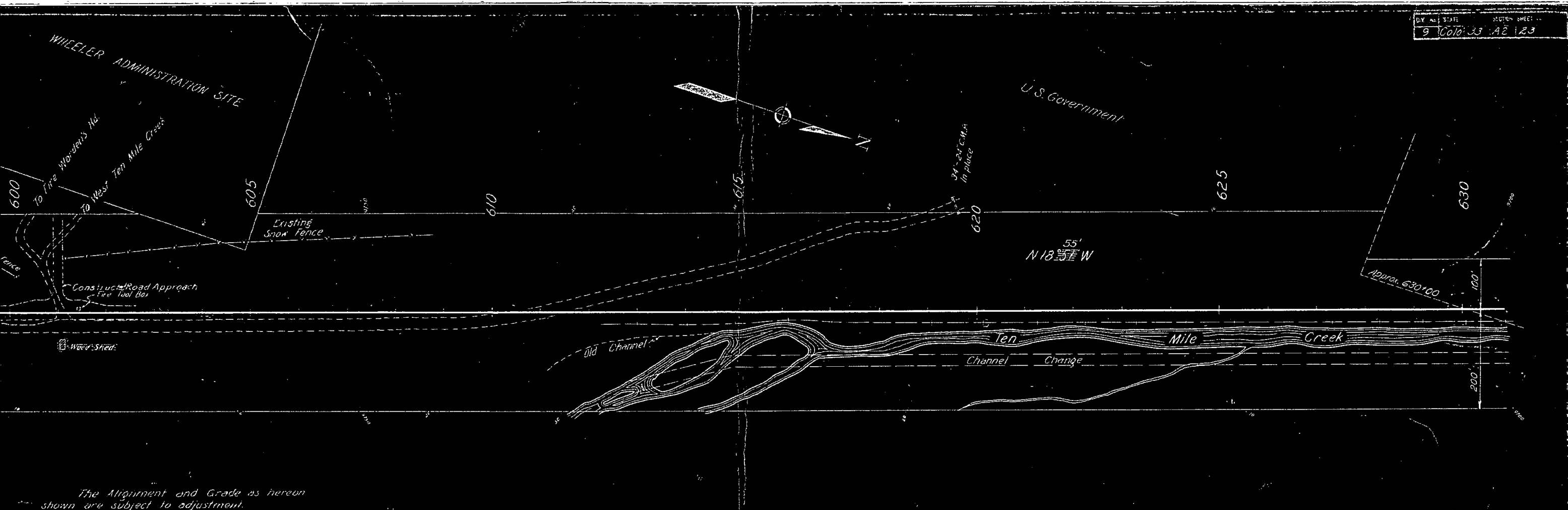












The Alignment and Grade as hereon shown are subject to adjustment.

