

STATE DEPARTMENT OF HIGHWAYS DIVISION OF HIGHWAYS — STATE OF COLORADO

PLAN AND PROFILE OF ~~PROPOSED~~ "As Constructed"

COMBINED FEDERAL AID PROJECT NO. FR 006-3(2) & FC 006-3(3) STATE HIGHWAY NO. 6

LOGAN COUNTY

TABULATION OF LENGTH AND DESIGN DATA

STATION	FR 006-3(2) L.N. FT.
STATION 477+50 BEGIN FR 006-3(2) = STATION 489+65 ON F 010-1(2) APPROXIMATE MILEPOST 414.2	17,027.86
STATION 647+77.86 BK = STATION 647+83.95 AH.	EQUATION
STATION 756+00 END FR 006-3(2) = STATION 756+00 BEGIN FR 006-3(1) APPROXIMATE MILEPOST 419.5	10,816.05
TOTAL	27,843.91

SUMMARY	LIN. FT.	MILES
ROADWAY (NET & GROSS LENGTH)	27,843.91	5.274

DESIGN DATA

2000 DESIGN TRAFFIC VOLUME 2900 ADT
350 DHV

MAXIMUM DEGREE OF CURVE 2°30'
MAXIMUM GRADE 5.10%
MINIMUM SSD - HORIZONTAL 1100'
MINIMUM SSD - VERTICAL 525'
MAXIMUM DESIGN SPEED 60 MPH

DIST. IV	FILE	COPY
DIST. ENGR.		
ASST. ENGR.		
CONSTR.		
PRE-CONST.		
ERA		
UTIL		
DESIGN		
ROW		
MATL'S		
EEO		
RE-PS		
MAINT.		
TRAFFIC		



STA 477+50 BEGIN FR 006-3(2) =
STA 489+65 ON F 010-1(2)
APPROX MILEPOST 414.2



SCALES OF ORIGINAL DRAWINGS
ON PLAN, 1 IN = 100 FT
ON PROFILE, 1 IN = 100 FT HORIZONTAL
1 IN = 10 FT VERTICAL
GRADE LINE ON PROFILE IS SHOWN AS GRADE OF FINISHED ROAD

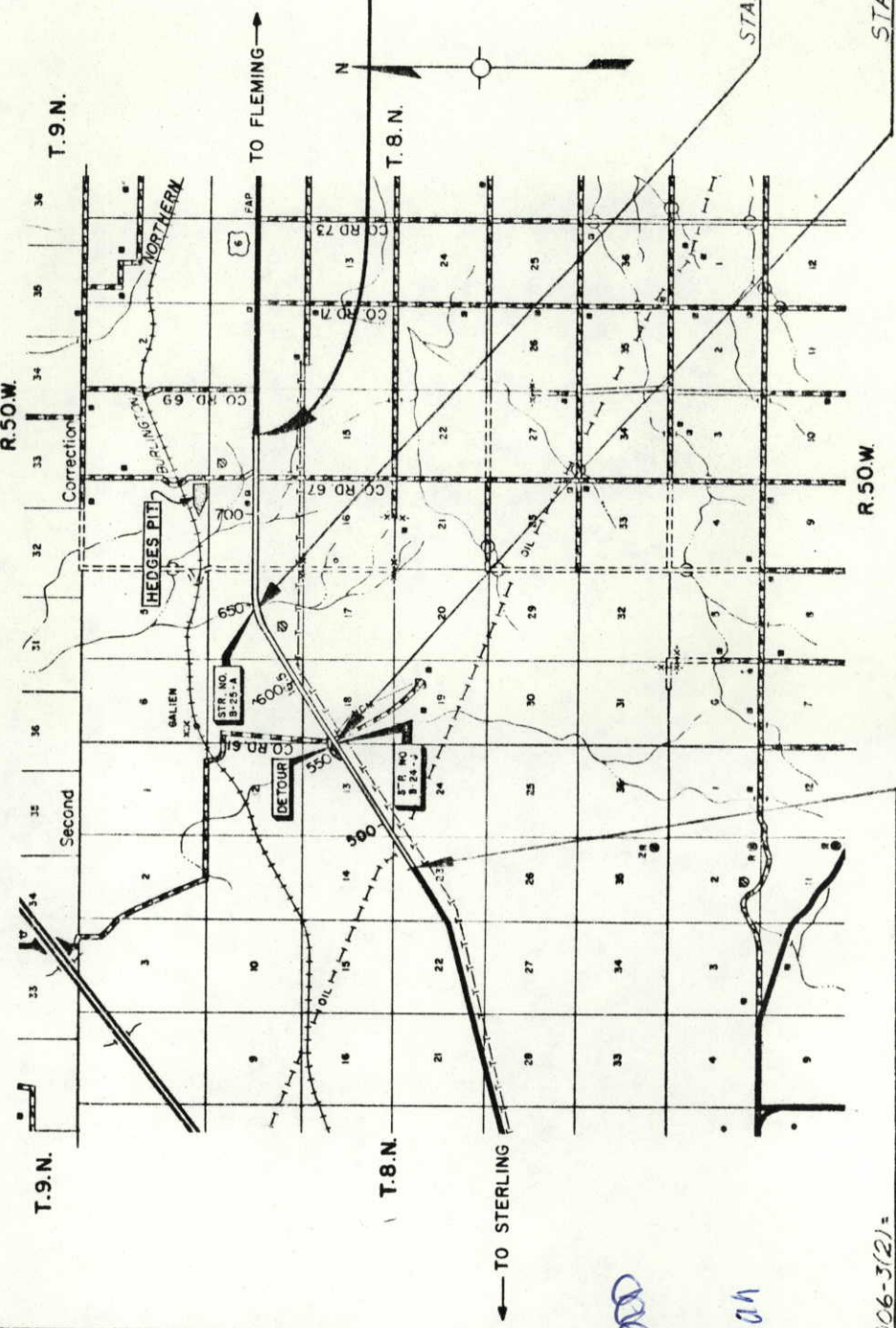
**AS CONSTRUCTED PLANS
RETURN TO DIST. 4 DESIGN**

INDEX OF SHEETS - Continuation

Sheet No.
24 Cross Sections - County Road No. 67
25-29 Cross Sections - Borrow Pit (Hedges)
30-34 Cross Sections - Topsoil Pit (Undesignated)
35-38 Cross Sections - Detour (Sta. 556±)

SHEET NO.

1	TITLE PAGE, SKETCH MAP, INDEX OF SHEETS AND TABULATION OF LENGTH AND DESIGN
2	STANDARD PLANS LIST
3	TYPICAL SECTION, GENERAL NOTES
4	GENERAL NOTES (CONTINUED) AND FENCING TABULATION
5 - 7	SUMMARY OF APPROXIMATE QUANTITIES
8 - 9	STRUCTURE QUANTITIES
10	SUMMARY OF EARTHWORK QUANTITIES, TABULATION OF DELINEATORS AND TABULATION OF GUARDRAIL
11	SURFACE COURSE PLAN AND PLAN OF ACCELERATION/DECELERATION LINES AND DETAIL FOR HEADWALL REMOVAL, SCHEDULING OF CONSTRUCTION TRAFFIC SIGNS
12	PIT SKETCH
13	DETOUR LAYOUT AND TYPICAL SECTION
14 - 23	PLAN AND PROFILE SHEETS



STA 649+33 FC 006-3(3)

STA 556+27 FC 006-3(3)

Sheets with No Revisions 2, 13, 17, & 21

DIVISION OF HIGHWAYS

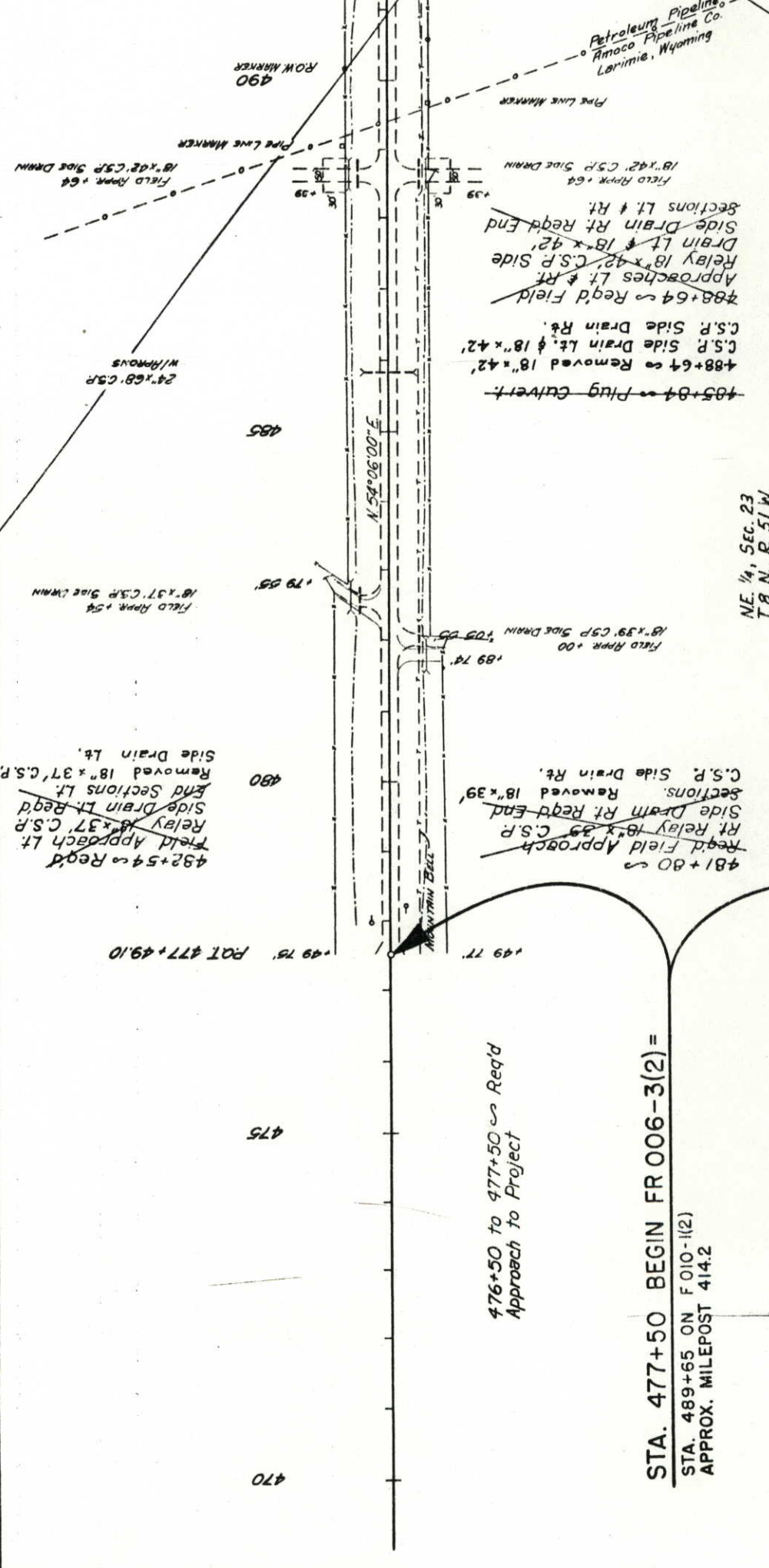
APPROVED: *[Signature]* CHIEF ENGINEER DATE 11/5/81

AS CONSTRUCTED INFORMATION

CONTRACTOR *Goodell, Eberhart, Inc.*
RESIDENT ENGINEER *L.J. Van Kesteren*
(Project Resident)

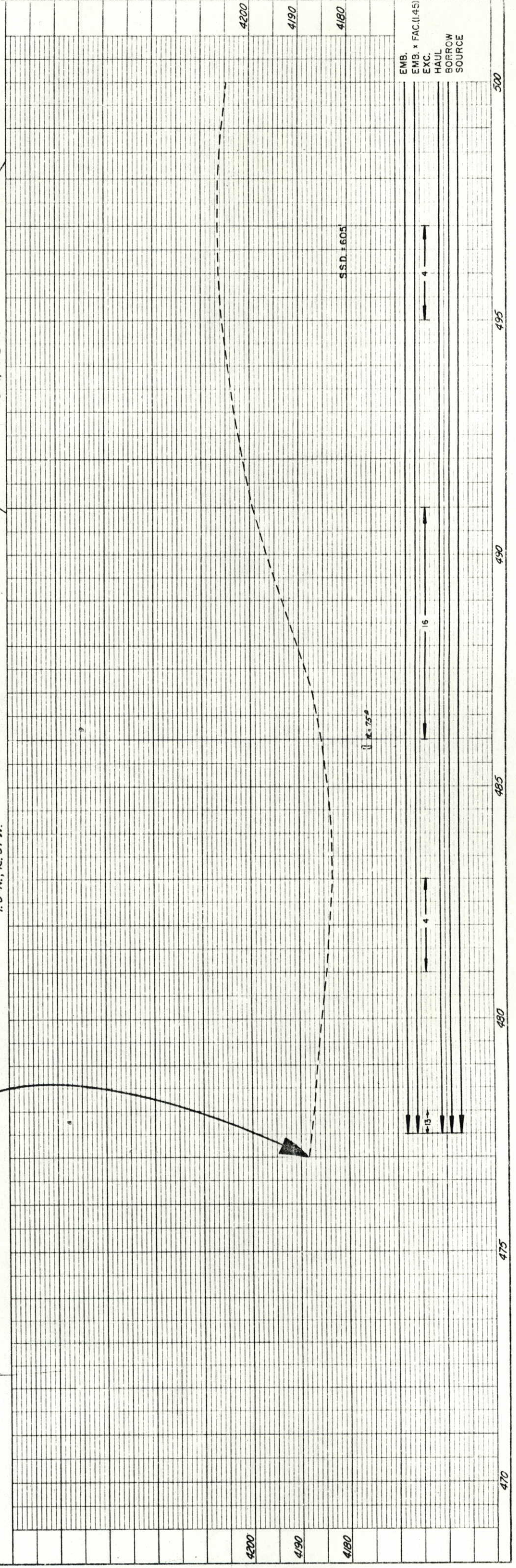
PROJECT STARTED 1 April 81
PROJECT COMPLETED 5 Oct 81
AS CONSTRUCTED PLANS APPROVED *[Signature]*
Dist. Constr. Engr. DATE 11/19/81

FEDERAL AID PROJECT NO. **FR 006-3(2)**
 DIVISION COLORADO
 SHEET NO. **14**
 S.W. 1/4, SEC. 14
 T.8 N., R.51 W.
 S.W. 1/4, SEC. 13
 T.8 N., R.51 W.
 AS CONSTRUCTED
 REVISIONS **5 OCT 81** VOID
 NO REVISIONS



STA. 477+50 BEGIN FR 006-3(2) =
STA. 489+65 ON F 010-1(2)
APPROX. MILEPOST 414.2

476+50 to 477+50 Req'd
 Approach to Project



EMB. x FAC. (1.45)
 EXC.
 HAUL
 BORROW
 SOURCE

PLAN

NO. 2087	DATE
BY	DATE
BY	DATE
BY	DATE

NOTE BOOK
 AT OR NEAR CHECKED
 11083

PROFILE

NO. 2087	DATE
BY	DATE
BY	DATE
BY	DATE

NOTE BOOK
 AT OR NEAR CHECKED
 11083

STATE OF COLORADO
 DEPARTMENT OF TRANSPORTATION
 DIVISION OF HIGHWAYS - STATE OF COLORADO
 MAY 1972

S.W. 1/4, Sec. 13,
 T.8N., R.51W.

24" x 73" C.S.P.
 w/iron

500

505

510

515

520

525

POT 529+49.0

100.35 530

NO REVISIONS	AS CONSTRUCTED	REVISIED	5 OCT 81	VOID
FEDERAL ROAD DISTRICT NO. VIII DIVISION COLORADO PROJECT NO. FR 006-3(2) EC 006-3(3)				
SHEET NO. 15 TOTAL SHEETS				

S.E. 1/4, Sec. 13,
 T.8N., R.51W

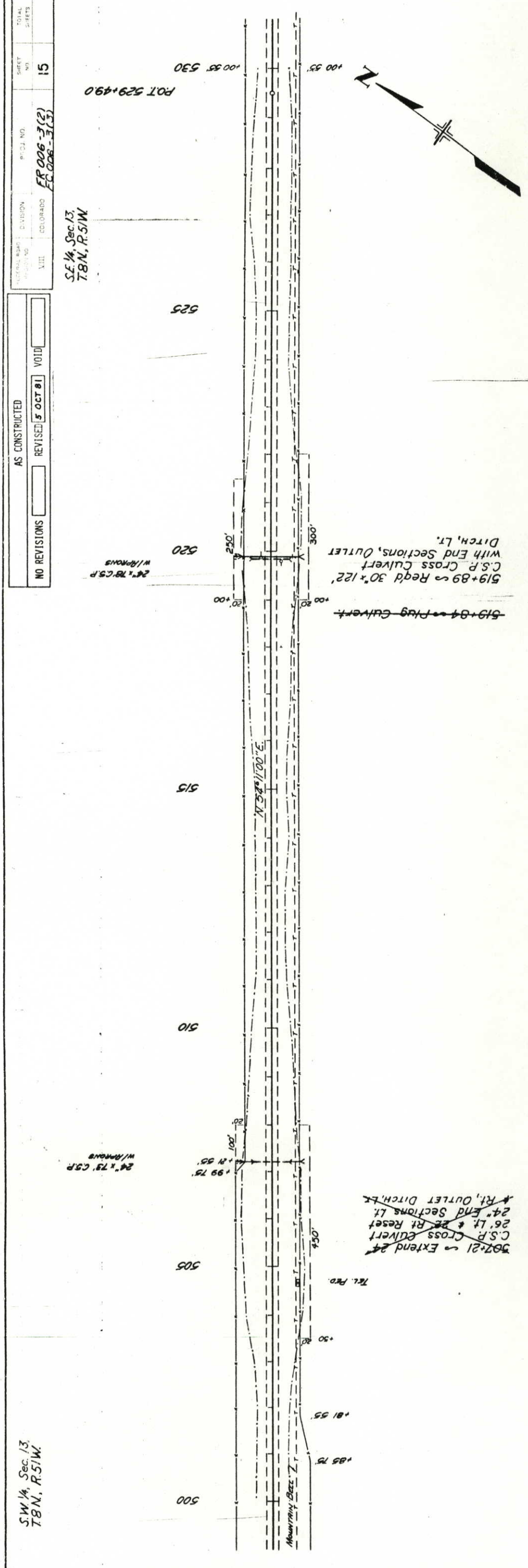
PLAN

DATE: _____ BY: _____

REVISIONS:

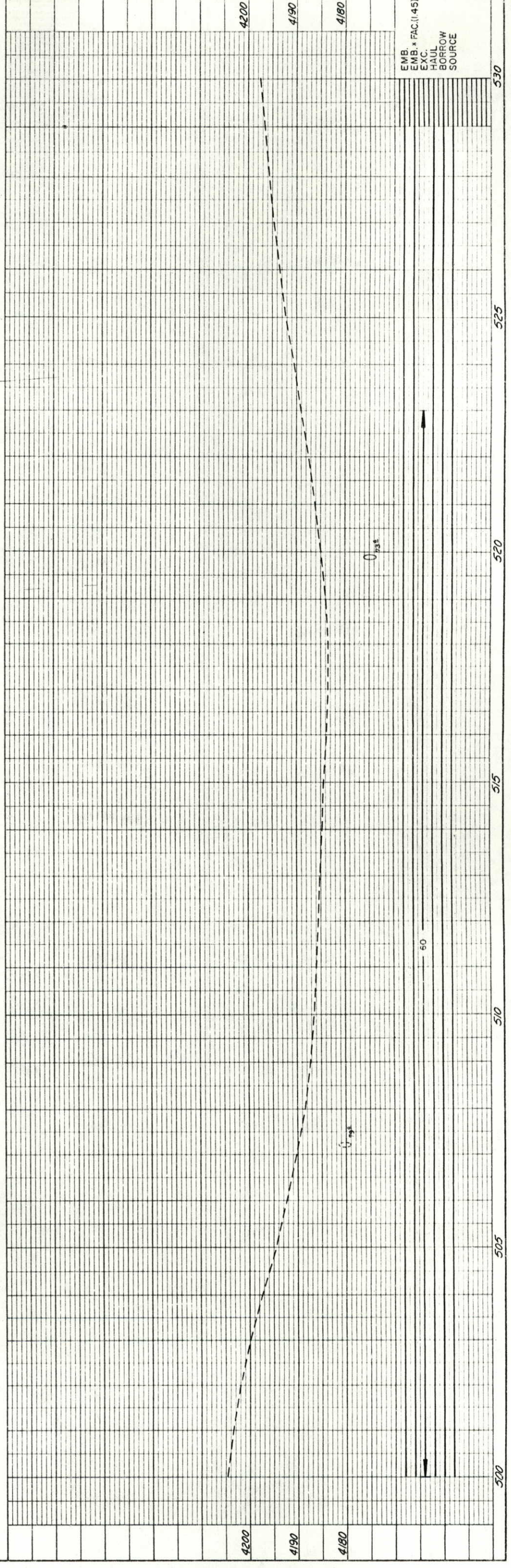
No.	DESCRIPTION

NOTE BOOK: _____
 ALIGNED CHECKED: _____
 BY: _____



~~519+84 - Plug Culvert~~
 519+89 - Redd 30' x 122'
 C.S.P. Cross Culvert
 with End Sections, Outlet
 Ditch, Lt.

~~507+21 - Extend 24'
 C.S.P. Cross Culvert
 26' Lt. & 26' Rt. Reset
 24' End Sections Lt.
 Rt. Outlet Ditch, Lt.~~



PROFILE

DATE: _____ BY: _____

REVISIONS:

No.	DESCRIPTION

NOTE BOOK: _____
 GRADES CHECKED: _____
 BY: _____

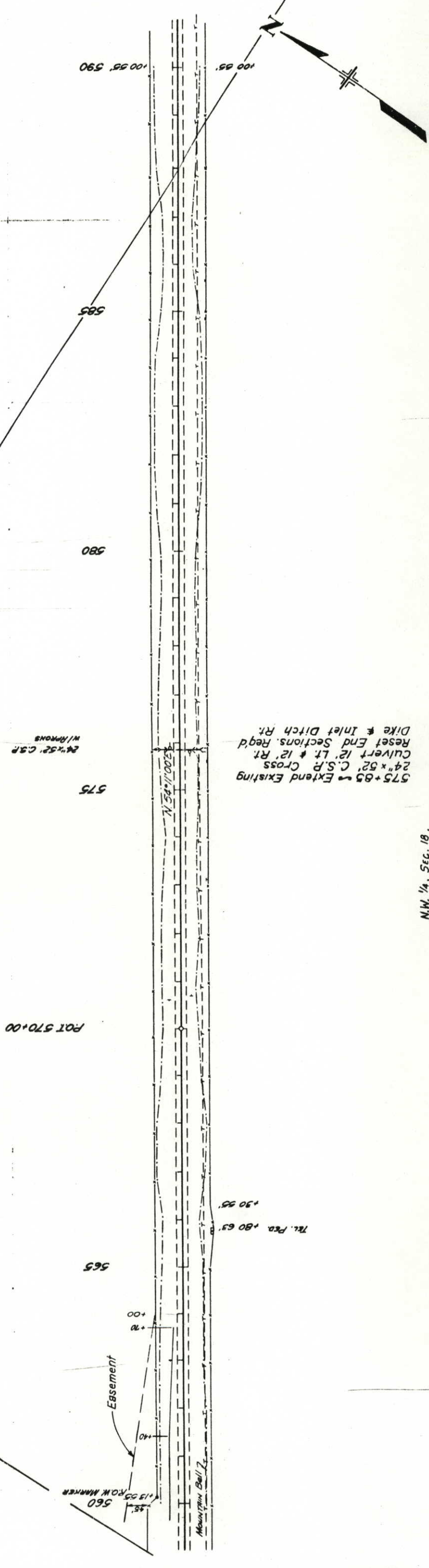
EMB. FAC. (1.45)
 EXC.
 HAUL
 BORROW
 SOURCE

STATE OF COLORADO
 DEPARTMENT OF TRANSPORTATION
 DIVISION OF HIGHWAYS
 DENVER, COLORADO
 MAY 1957

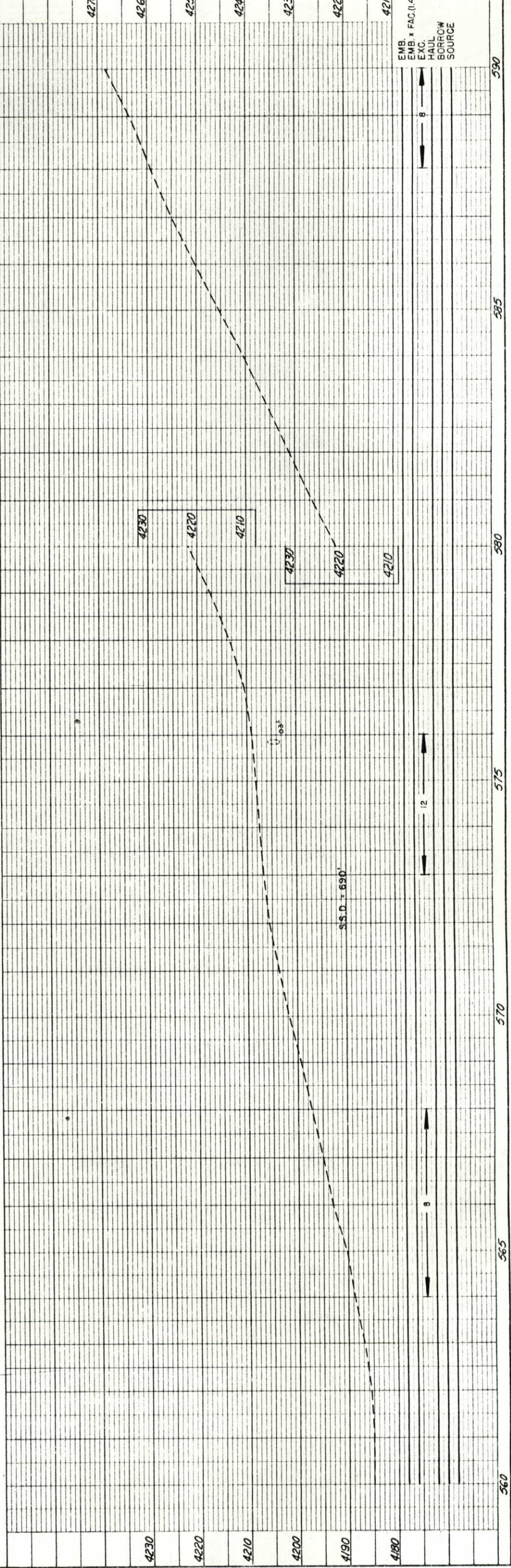
NO REVISIONS	5 OCT 81	REVISED	VOID
AS CONSTRUCTED			
FEDERAL ROAD DISTRICT NO.	VIII	DIVISION	COLORADO
PROJECT NO.	FR 006-3(2) FC 006-3(3)	SHEET NO.	17
NW 1/4 Sec. 13 T.8N., R.50W.		SW 1/4 Sec. 7 T.8N., R.50W.	

NW 1/4 Sec 18
T.8N R.50 W.

NE 1/4, SEC. 13
T.8N., R.50 W.



N.W. 1/4, Sec. 18.
T.8N., R. 50 W.



DATE	BY

PLAN	3302
NOTE BOOK	3302
ALIGNED CHECKED	3302
BY	3302

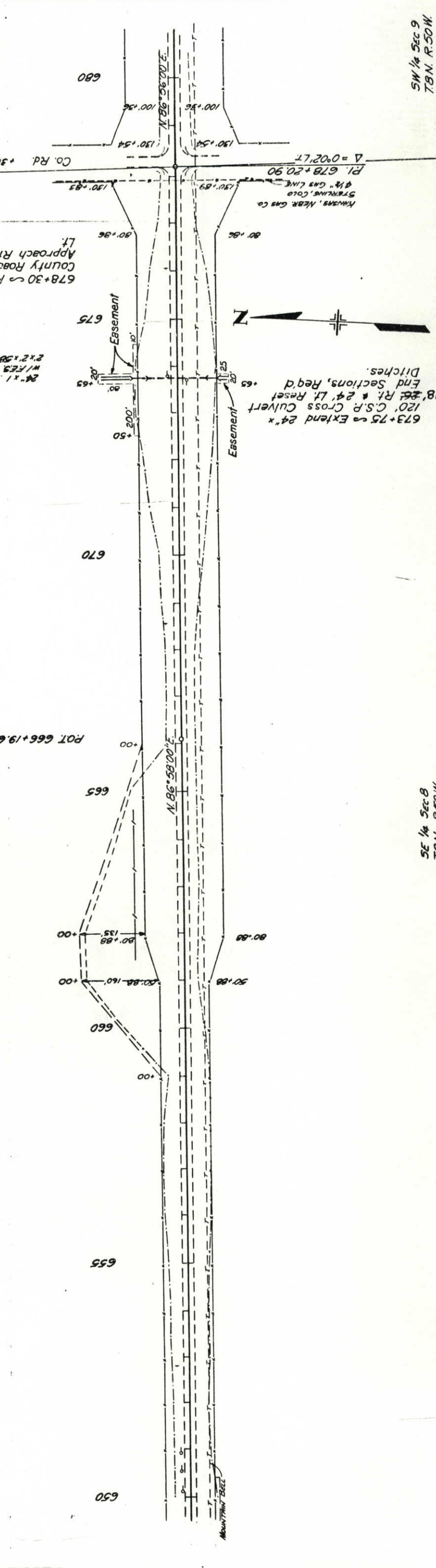
PROFILE	3302
NOTE BOOK	3302
DESIGNED	3302
CHECKED	3302
BY	3302

FEDERAL ROAD DISTRICT NO.	VIII
SECTION NO.	
DIVISION	COLORADO
PROJECT NO.	FR 006-3(2) FC 006-3(3)
SHEET NO.	20
TOTAL SHEETS	

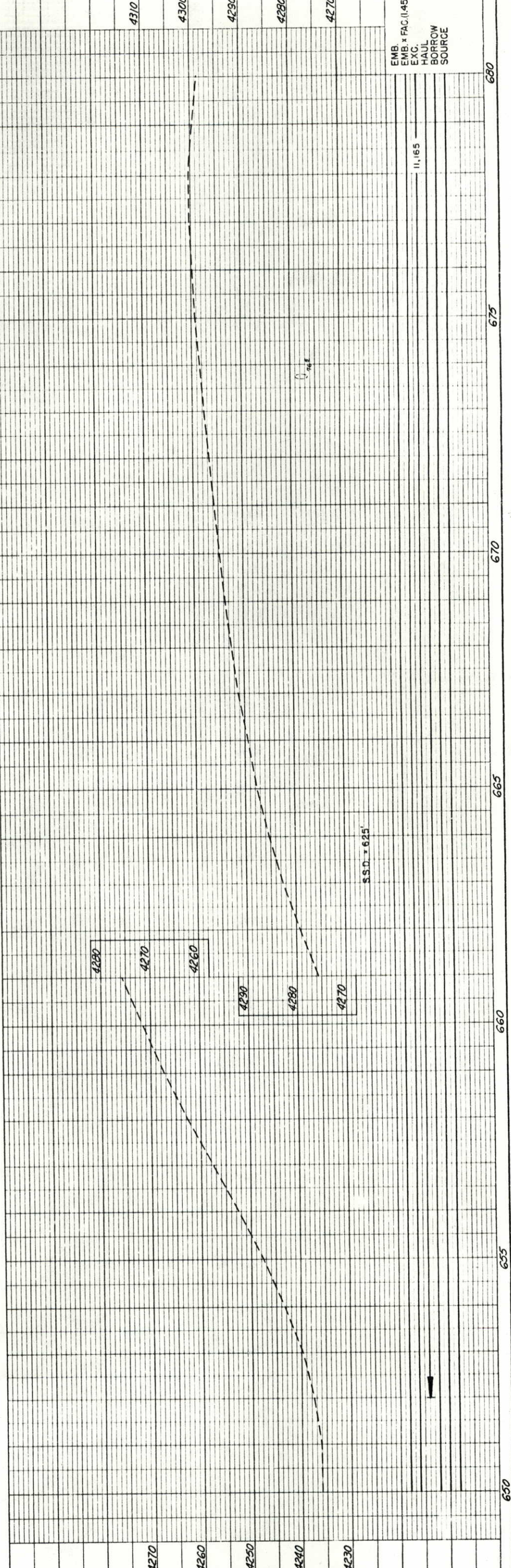
NO REVISIONS	AS CONSTRUCTED
	REVISED 5 OCT 58
	VOID

NE 1/4 Sec 8
 T8N. R.50W

NW 1/4 Sec 9
 T8N. R.50W



678+30 ~ Req'd County Road Approach Rt. #
 673+75 ~ Extend 24" x
 120" C.S.P. Cross Culvert
 18' x 24' Rt. & 24' Lt. Reset
 End Sections, Req'd
 Ditches.
 24" x 1.58" CSP
 W/FES
 2' x 2' x 58" CBC IN CENTER



SW 1/4 Sec 9
 T8N. R.50W

EMB	EMB + FAC (1.45)	
EXC.		
HAUL		
BORROW		
SOURCE		
	11.165	

DATE	
BY	
SCALE	
PROJECT	
NO. OF SHEETS	
NOTE BOOK	
NO. 1088	
11089	

NW 1/4 Sec 9
 T8N R50W

NO REVISIONS OCT 81 REVISED VOID

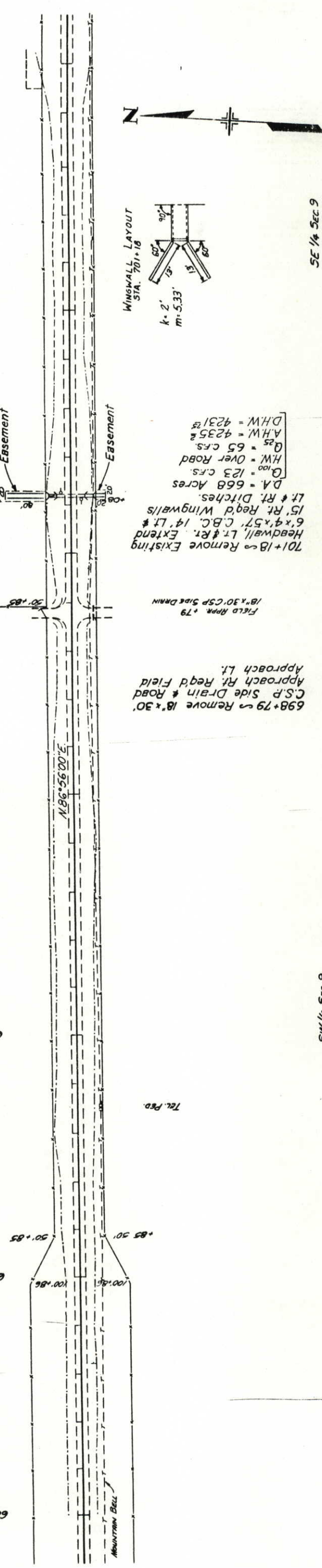
FEDERAL ROAD DISTRICT NO. 1
 REGION NO. VIII
 PROJECT NO. FR 006-3(2)
 FC 006-3(3)
 SHEET NO. 21

NE 1/4 Sec 9
 T8N R50W

FIELD RPPM + 79
 W/BW GATE

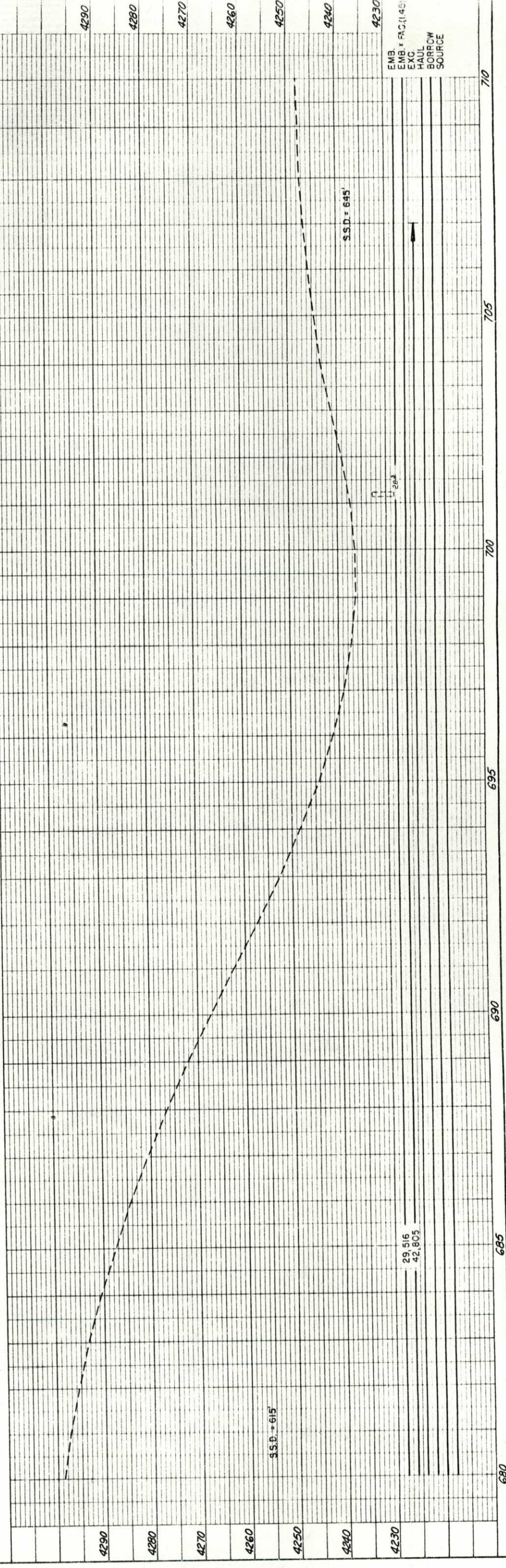
6' x 4' x 57' C.B.C.
 WITH HWY & WINGS

689 690 695 700 705 710



SW 1/4 Sec 9
 T8N R50W

SE 1/4 Sec 9
 T8N R50W



PLAN

DATE	BY	CHECKED

NOTE BOOK NO. 31982
 REVISION CHECKED BY DATE

PROFILE

DATE	BY	CHECKED

NOTE BOOK NO. 31982
 REVISION CHECKED BY DATE

EMB. + 1145'
 EXC.
 HAUL BORROW SOURCE

FEDERAL ROAD DISTRICT NO.	VIII
DIVISION	COLORADO
PROJECT NO.	FR 006-3(2) FC 006-3(3)
SHEET NO.	22
TOTAL SHEETS	

NE 1/4 Sec. 9
T8N. R50W

AS CONSTRUCTED
REVISED 5 OCT 81
VOID

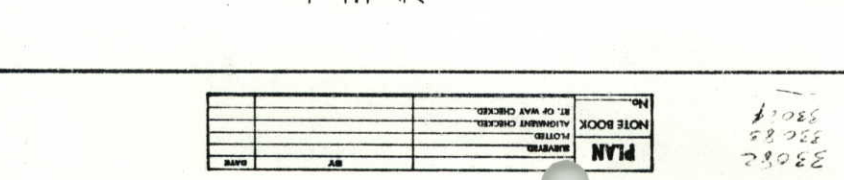
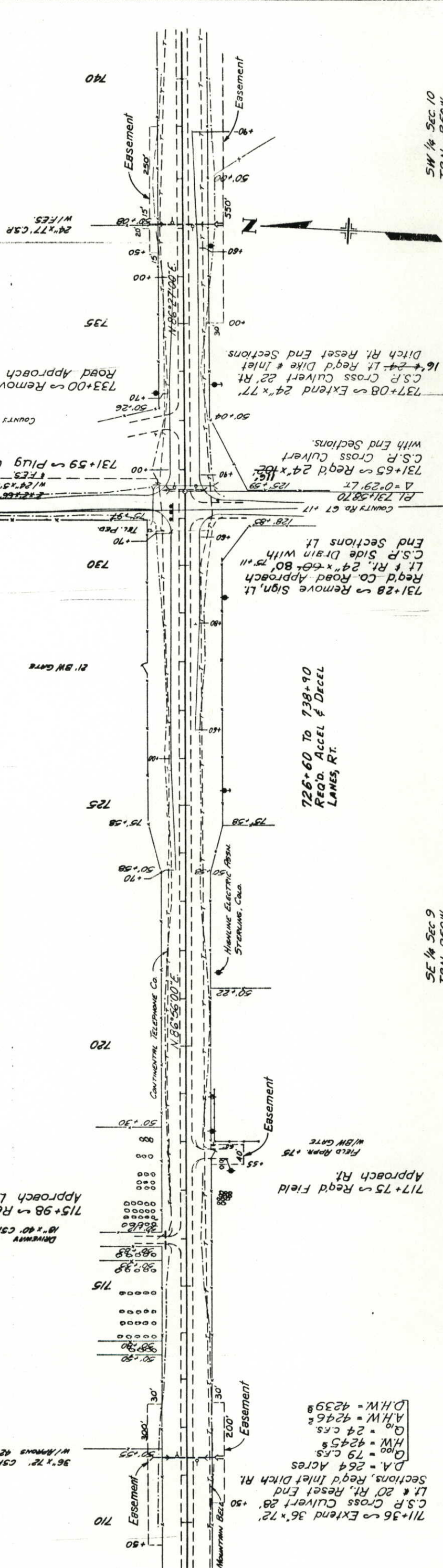
NO REVISIONS

723+70 To 736+00
REQ'D. ACCEL & DECEL
LANES, LT.

726+60 To 738+90
REQ'D. ACCEL & DECEL
LANES, RT.

NW 1/4 Sec. 10
T8N. R50W

SW 1/4 Sec. 10
T8N. R50W



DATE	BY	NO.

4290	4290	4270	4260	4250	4240	710
4320	4310	4300	4290	4280	715	
					720	
					725	
					730	
					735	
					740	

DATE	BY	NO.

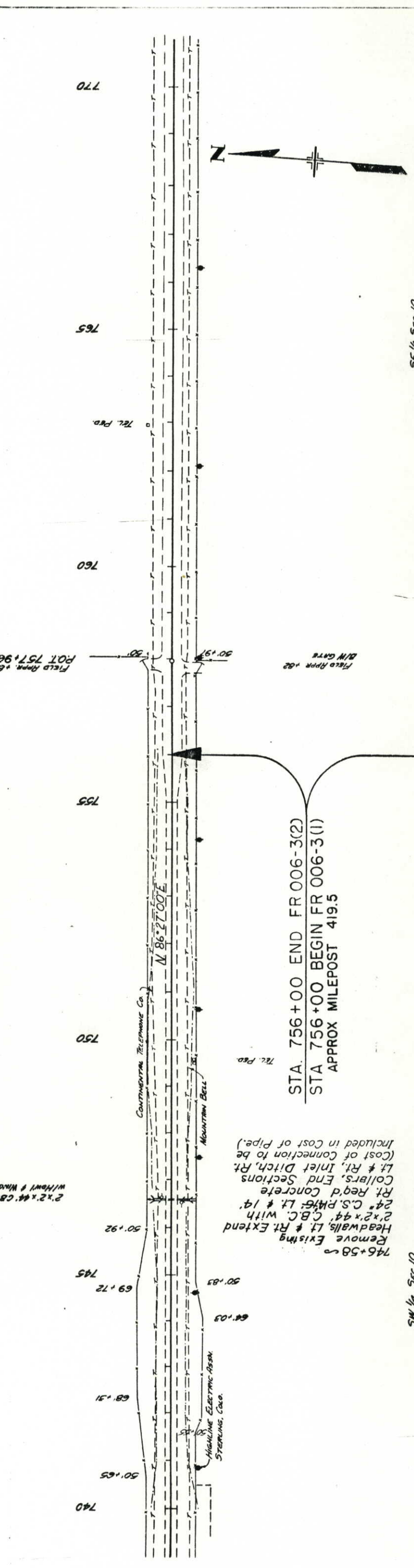
EMB. & FAC. (1.45)
EXC.
HAUL
BORROW
SOURCE

REGIONAL PLAN NO. 006-3(2)
 COUNTY COLORADO
 SECTION NO. 23
 TOTAL SHEETS 23
 NE 1/4 Sec 10
 T8N R50W

AS CONSTRUCTED
 NO REVISIONS
 REVISED 5 OCT 81
 VOID

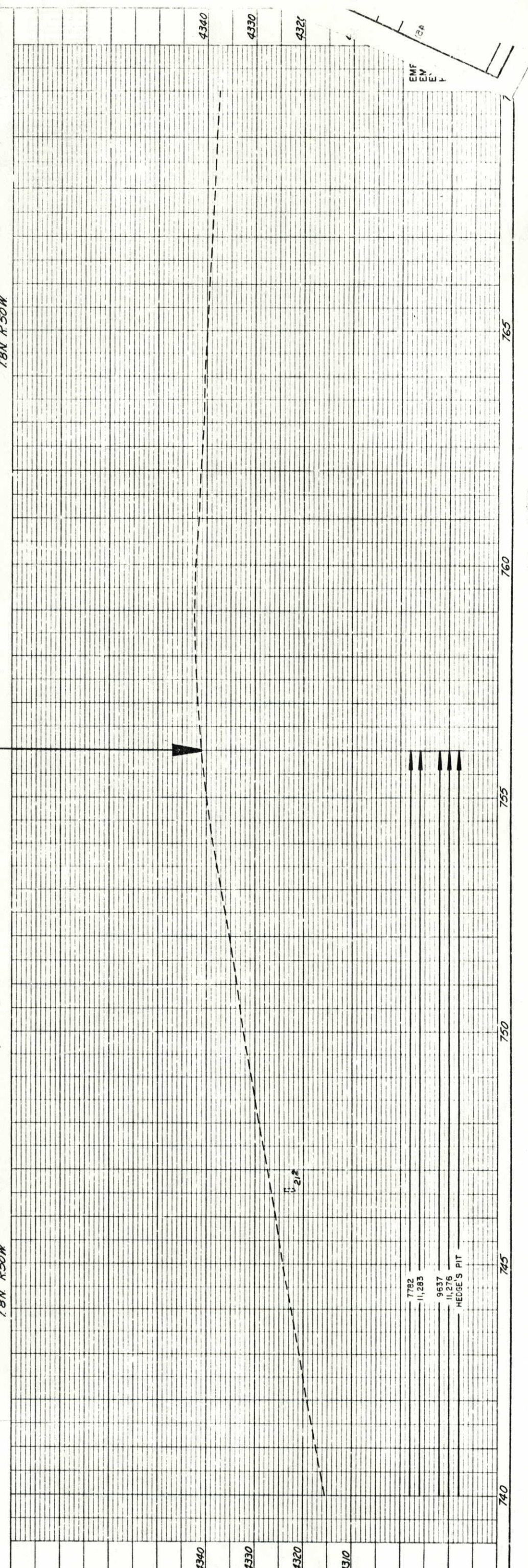
NW 1/4 Sec 10
 T8N R50W

SW 1/4 Sec 10
 T8N R50W



STA. 756+00 END FR 006-3(2)
 STA 756+00 BEGIN FR 006-3(1)
 APPROX MILEPOST 419.5

Remove Existing
 Headwalls Lt & Rt. Extend
 2'x2'x4' C.B.C. with
 24" C.S. P.H. Lt & Rt.
 Rt. Req'd Concrete
 Collars, End Sections
 Lt & Rt, Inlet Ditch, Rt.
 (Cost of Connection to be
 Included in Cost of Pipe.)



DATE	BY

NO. 1	DATE