

TIMBER GUARD POSTS

STATION	SIDE	SPACING	NO.	
138+30 (LW)	LL	Culvert	2 ✓	
138+40 (LW)	LL	Culvert	1 ✓	
141+25	Rt & Ll	Culvert	2 ✓	
141+65	Rt & Ll	Intersection	30 ✓	
150+50	Rt	Culvert	2 ✓	
156+81	Ll	Culvert	2 ✓	
170+45	Ll	Culvert	2 ✓	
171+14	Ll	Culvert	4 ✓	
179+90	Rt & Ll	Intersection	20 ✓	
181+00	Ll	Culvert	2 ✓	
189+60	Ll	Culvert	2 ✓	
190+25	Ll	Culvert	2 ✓	
191+00	Ll	Culvert	2 ✓	
191+84	Ll	Culvert	2 ✓	
206+16	Rt & Ll	Intersection	2 ✓	
227+19	Ll	Culvert	4 ✓	
231+45	Ll	Culvert	4 ✓	
236+70	Ll	Culvert	2 ✓	
240+30	Ll	Culvert	4 ✓	
241+65	Ll	Culvert	2 ✓	
247+03	Ll	Culvert	2 ✓	
251+65	Ll	Culvert	2 ✓	
251+00	Ll	Culvert	4 ✓	
251+80	Ll	Culvert	2 ✓	
251+50	Ll	Culvert	2 ✓	
251+25	Rt & Ll	Intersection	29/3 ✓	
Total 48' Roadway				37 ✓
Total 24' Roadway				86 ✓
PROJECT TOTAL				123 ✓

ANCHOR BASE TYPE

SECTION	BRACKET SPREAD	NO. BRACKETS	POLE SIZE	NO. POLES
100'	6'-0"	88	8W x 4W x 30'-0"	87
101'	12'-0"	7	8W x 4W x 30'-0"	7

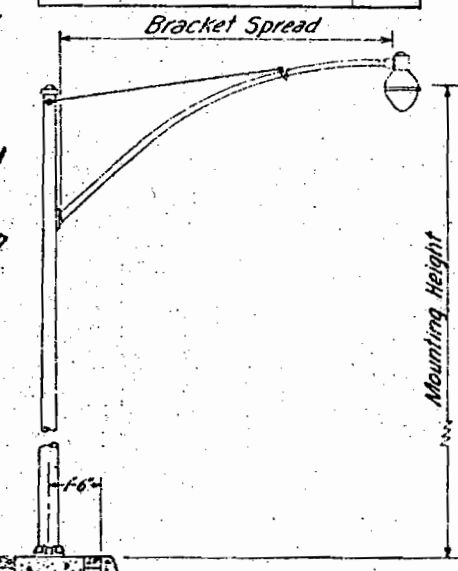
Use Union Metal Co. Light Standards or acceptable equivalent to be installed by City of Grand Junction at No Cost to the Project. Locations for Light Standards are shown on Sheet No's. 37 to 40.

Note: The highway lighting designed for this project is based on an average maintained foot-candle distribution of at least 0.84 throughout the entire portion of the project which lies within the City Limits of Grand Junction.

TYPICAL VIEW LIGHT STANDARD

R.O.W. MARKERS

STATION	SIDE	NO.	
131+92.1	Rt	1	
135+52.4	Ll	1	
142+20.1	Rt	1	
145+43.4	Ll	1	
150+50	Rt	1	
156+81	Ll	1	
173+00	Ll	1	
185+00.75	Rt	1	
192+00	Rt	1	
200+36.3	Ll	1	
206+69.6 Bk.	Ll	1	
206+72.6 Ah.	Ll	1	
220+00	Rt	1	
233+00	Ll	1	
245+00	Rt	1	
263+35.5	Ll	1	
269+14.7	Rt	1	
TOTAL - 48' ROADWAY			4
TOTAL - 24' ROADWAY			11
PROJECT TOTAL			15



From the Beginning of Project 174+ the increased thickness field recommendations. Borrow shown in profile. Borrow in Profile.

BORROW AND SUB-BASE MATERIAL PLANS

It is estimated that Borrow and Sub-Base Material for the project is available in the vicinity of the pits indicated in the following tabulations. Estimated quantities involved in these operations are shown below.

Alteration of the plans as here outlined will be allowed only on written permission from the Department.

SUB-BASE MATERIAL

MATERIAL TO BE PLACED	SOURCE AVAILABLE & "R" VALUE	QUANTITY & THICKNESS		OVERHAUL TON MILES		
		THICKNESS @ "T"	CLASS-1 TONS			
INSIDE GRAND JUNCTION						
55+52 Intersection	Pit No. 1	4"	957	6,298		
62+26 Intersection	Rex Phelps		330	2,149		
62+26 to 65+86	125,000 cu. yds. R-81		616	4,002		
Intersection (2nd St.)			149	963		
67+07 to 101+00			2,511	15,390		
101+00 to 121+00			1,460	8,315		
121+00 to 124+00			164	1,426		
124+00 to 129+72.6			578	3,074		
64+71 to 101+00			2,678	16,436		
101+00 to 129+52.4			2,111	11,663		
5th St. Estimated for: Road Appro Medians New Curb			59	365		
			2,250	13,438		
			128	834		
			342	2,043		
OUTSIDE GRAND JUNCTION						
129+72.6 to 136+00	Pit No. 1		634	3,299		
136+00 to 135+55.3 Ah.			23	118		
135+55.3 Ah. to 136+00			42	216		
129+52.4 to 130+30			57	299		
130+30 to 133+30			264	1,376		
133+30 to 135+55.3			228	1,177		
135+55.3 to 136+00			43	221		
136+00 to 152+00			2,976	14,822		
15th St. Frontage Roads: Lt. 130+30 to 143+22 Lt. 145+65 to 152+00 Rt. 145+70 to 150+00			245	1,294		
			904	4,626		
			444	2,171		
			301	1,477		
Estimated for: New Curb & Gutter Intersection Accel. & Decel Lanes			32	168		
			693	3,443		
			492	2,444		
152+00 to 159+84.3	Pit No. 1		359	1,727		
153+93 to 159+84.3			851	4,031		
159+84.3 to 178+00			11,163	40,563		
Frontage Roads: Lt. 152+00 to 178+00 Lt. 227+00 to 234+00			1,020	8,340		
			3,035	9,098		
Estimated for: Intersection, Sta. 144+65 Accel. & Decel Lanes Correcting irreg. in subgrade			646	2,778		
			480	1,860		
Approach to Project		4"	753	1,909		
TOTALS - INSIDE GRAND JUNCTION (66' ROADWAY)					14,453	86,402
TOTALS - OUTSIDE GRAND JUNCTION (48' ROADWAY)					7,378	37,551
TOTALS - OUTSIDE GRAND JUNCTION (24' ROADWAY)					19,107	70,306
PROJECT TOTAL					40,938	193,659

Based on Curve "D" (Main Lines), and Curve "B" (Frontage Roads).

BORROW

MATERIAL TO BE PLACED	SOURCE AVAILABLE & "R" VALUE	QUANTITY & THICKNESS		STATION YARDS	YARD MILES			
		THICKNESS @ "T"	CUBIC YARDS					
INSIDE GRAND JUNCTION								
55+52 to 61+32 Intersection (1st St.)	Pit No. 2	9"	1,085	11,935	1,384			
62+26 to 65+86	Holly Sugar Co. P. 100,000 cu. yds. R-74		495	5,445	598			
			709	7,799	818			
Intersection (2nd St.)			224	2,464	249			
67+07 to 101+00			1,697	18,667	1,317			
101+00 to 121+00			1,000	11,000	644			
121+00 to 124+00			324	3,564	279			
124+00 to 129+72.6			951	10,461	898			
64+71 to 101+00			1,810	19,910	1,563			
101+00 to 129+52.4			1,426	15,686	1,128			
5th St. Estimated for: New Curb & Gutter Correcting irreg. in subgrade		9"	89	979	75			
			512	5,632	468			
			1,032	11,352	942			
OUTSIDE GRAND JUNCTION								
129+72.6 to 136+00	Pit No. 2	9"	1,041	11,451	1,101			
136+00 to 136+23.2 Bk			37	407	41			
135+55.3 Ah. to 136+00			69	759	78			
129+52.4 to 130+30			39	429	42			
130+30 to 133+30			324	3,564	358			
133+30 to 135+55.3			374	4,114	432			
135+55.3 to 136+00			72	792	85			
136+00 to 152+00		9"	4,912	54,032	6,296			
15th St. Frontage Roads: Lt. 130+30 to 143+22 Lt. 145+65 to 152+00 Rt. 145+70 to 150+00			166	1,826	183			
		5"	827	9,097	991			
		5"	406	4,466	559			
		5"	275	3,025	373			
Estimated for: New Curb & Gutter Intersection, Sta. 144+65 Accel. & Decel Lanes Correcting irreg. in subgrade			48	528	51			
		9"	1,039	11,429	1,345			
		9"	738	8,118	955			
			1,037	11,407	1,289			
152+00 to 159+84.3	Pit No. 2	9"	1,859	20,449	2,708			
159+84.3 to 178+00		9"	12,305	135,355	20,102			
Frontage Roads: Lt. 152+00 to 178+00 Lt. 227+00 to 234+00			1,864	18,304	2,795			
		5"	448	4,928	1,308			
Estimated for: Intersection, Sta. 179+90 Accel. & Decel Lanes Correcting irreg. in subgrade			970	10,670	1,903			
		9"	720	7,920	1,719			
			1,797	19,767	3,854			
234+00 to 270+39.4 Bk. Estimated for: Front. Road Lt. 234+ to 270+ Approach to Project Correcting irreg. in subgrade	Pit No. 1	9"	6,041	66,451	15,580			
	Rex Phelps 125,000 cu. yds. R-74		2,329	25,619	6,122			
		5"	1,163	12,793	2,596			
			953	10,483	2,460			
TOTALS - INSIDE GRAND JUNCTION (66' ROADWAY)						11,354	124,834	10,362
TOTALS - OUTSIDE GRAND JUNCTION (48' ROADWAY)						11,404	125,444	14,178
TOTALS - OUTSIDE GRAND JUNCTION (24' ROADWAY)						30,249	332,735	69,447
PROJECT TOTALS						53,007	583,077	93,987

Borrow Material to be paid for as Unclassified Excavation.

R.O.W. TABULATION OF PROPERTIES IN MESA COUNTY S.H.No. 4 PROJ. F 001-1 (8)

FEDERAL ROAD DIVISION NO.	DISTRICT	PROJ. NO.	SHEET NO.	TOTAL SHEETS
9	COLORADO	F 001-1 (8)	2	

RIGHT OF WAY
 Rev. 4-2-54 T.L.K.
 Rev. 5-7-54 T.L.K.
 Rev. 5-24-54 T.L.K.
 Rev. 6-7-54 T.L.K.
 Rev. 6-29-54 T.L.K.

Rev. 7-23-56 S.W.Z. 28B, E 28B

REMARKS

Rev. 6-29-54 T.L.K.

purchased by Grand Junction B. 617 P. 220

PARCEL NO.	OWNER	ADDRESS	LOCATION	AREA IN ACRES		AREA IN Sq. Ft.		REMARKS	
				TOTAL LAND IN TRACT	PARCEL	TO BE ACQUIRED	PARCEL		TO BE ACQUIRED
C-101	Hallam & Boggs Truck & Implement Co.	225 South Second St., Grand Junction, Colo.	Part Lot 24, Block 122, SW 1/4 Sec. 14, T. 1 S., R. 1 E., Ute Meridian				429	429	
C-E-101	Denver & Rio Grande Western Railroad		Part SW 1/4 SW 1/4 Sec. 14 & SE 1/4 SE 1/4 Sec. 15, T. 1 S., R. 1 E., Ute M.	0.608	0.608				
C-102	Addie Biggs	1241 Gunnison Ave., Grand Junction, Colo.	Part Lots 1, 2, 3 & 4, Block 143 in SW 1/4, Sec. 14, T. 1 S., R. 1 E., Ute M.				8,931	8,931	
C-103	R.M. Kuykendall	Orchard Mesa, Grand Junction, Colo.	Part Lots 5, 6 & 7, Block 143 in SW 1/4, Sec. 14, T. 1 S., R. 1 E., Ute M.				2,496	2,496	
C-104	Ted Hayashi		All Lots 18, 19 & 20, Block 143 in SW 1/4, Sec. 14, T. 1 S., R. 1 E., Ute M.				4,768	4,768	
C-105	W. R. Hall & G.W. Epeneter	Sixth St. & North Ave. Grand Junction, Colo.	Part Lots 13, 14, 15, 16 & 17, Block 143 in SW 1/4, Sec. 14, T. 1 S., R. 1 E., Ute M.				7,717	7,717	
C-106	City of Grand Junction, Colorado		Part Lots 17 to 32, Block Q, Keith's Addition in SW 1/4 SW 1/4 Sec. 13				29,434	29,434	
C-107	Henry L. Price & Beatrice V. Price	135 South Seventh St. Grand Junction, Colo.	Part Lots 1 to 4, Block R, Keith's Addition in SW 1/4 SW 1/4 Sec. 13				16,605	16,605	
C-108	City of Grand Junction, Colorado		Part Lots 5 to 4, Block R, Keith's Addition in SW 1/4 SW 1/4 Sec. 13				43,649	43,649	
C-109	L.C. Nowlan & Marie Nowlan	1220 Main Street Grand Junction, Colo.	Part Lots 8 to 12, Block 6, East Main Street Addition in NE 1/4 SW 1/4, Sec. 13, T. 1 S., R. 1 E., Ute M.				20,601	20,601	
6A	B.J. Walker & O.K. Lybarger	1122 S. 5th St., Grand Junction, Colo.	W 1/2 SE 1/4 NW 1/4 Sec. 18 T. 1 S., R. 1 E., Ute M.	0.977	0.977				
1	T.B. Mc Mahon	Box 58, Telluride, Colorado	Part SE 1/4 SW 1/4, Sec. 13 T. 1 S., R. 1 E., Ute Meridian	7.137	7.137				
2	L.C. Nowlan & Marie Nowlan	1220 Main Street, Grand Junction, Colo.	Part SE 1/4 NE 1/4 SW 1/4, Sec. 13, T. 1 S., R. 1 E., Ute Meridian	0.727	0.727				
3	J.C. Irwin & Evelyn L. Irwin	Clifton, Colorado	Part SE 1/4, Sec. 13, T. 1 S., R. 1 E., Ute Meridian	13.109	13.109				
4	Albert Guptill & Florence Guptill	Grand Avenue Road, Grand Junction, Colo.	Part SE 1/4, Sec. 13, T. 1 S., R. 1 E., Ute Meridian	0.793	0.793				
5 Rev.	Ella K. Marron & George E. Marron	c/o Loyd Files, Route 5, Grand Junction, Colo.	Part SW 1/4 NW 1/4, Sec. 18 T. 1 S., R. 1 E., U. M.	0.891	0.393				
6 Rev.	Lillian W. Jarvis	218, Rood Ave, Grand Junction, Colo.	W 1/2 SE 1/4 NW 1/4, Sec. 18 T. 1 S., R. 1 E., U. M.	1.812	1.550				
7	Emma B. Lyons, Frank A. Lyons, Roger L. Moore, Nellie G. Moore, Ned L. Moore & Percy C. Broady	709 Grape St., Denver, Colo.	E 1/2 SE 1/4 NW 1/4, Sec. 18 T. 1 S., R. 1 E., U. M.	3.134	2.820				
8	Charles Alfred Thistle Jr.	466 28 1/2 Road, Grand Junction, Colo.	SW 1/4 NE 1/4, Sec. 18 T. 1 S., R. 1 E., U. M.	4.790	4.790				
9	Clayton S. Meek & Mary B. Meek	2851 North Ave., Grand Junction, Colo.	SW 1/4 NE 1/4, SE 1/4 NE 1/4, Sec. 18, T. 1 S., R. 1 E., U. M.	1.442	1.442				
10 Rev.	Oliver S. Wood & Marion C. Wood	1225 Bunting Ave., Grand Junction, Colo.	SE 1/4 NE 1/4, Sec. 18 T. 1 S., R. 1 E., U. M.	6.451	6.315				
11	G.S. Clary & N. Clary	473 29th Road, Grand Junction, Colo.	SE 1/4 NE 1/4, Sec. 18 T. 1 S., R. 1 E., U. M.	0.064	0.021				
12	Edith Cary	Route 5, Grand Junction, Colo.	SW 1/4 NW 1/4, W 1/2 E 1/2 NW 1/4 NW 1/4, Sec. 17, T. 1 S., R. 1 E., U. M.	4.964	4.786				
13	Leslie Johnson & Christine Victoria Johnson	2909 North Ave., Grand Junction, Colo.	E 1/2 W 1/2 NW 1/4 NW 1/4, Sec. 17, T. 1 S., R. 1 E., U. M.	0.003	0.003				
14	Earl H. Shafer & Marie E. Shafer	531 Belford Ave., Grand Junction, Colo.	NW 1/4 NW 1/4, Sec. 17 T. 1 S., R. 1 E., U. M.	0.503	0.503				
15	W.E. Gwin & Buelch E. Gwin	Fruitvale, Colo.	NW 1/4 NW 1/4, Sec. 17, T. 1 S., R. 1 E., U. M.	0.695	0.695				
16	H.C. Crawford	Grand Junction, Colo.	W 1/2 W 1/2 NE 1/4 NW 1/4, Sec. 17, T. 1 S., R. 1 E., U. M.	1.431	1.431				
17	R. J. Benton & Gladys M. Benton	Fruitvale, Colo.	E 1/2 W 1/2 NE 1/4 NW 1/4, Sec. 17, T. 1 S., R. 1 E., U. M.	1.146	1.146				
18	Kenneth P. Schindel	Fruitvale, Colo.	W 1/2 E 1/2 NE 1/4 NW 1/4, Sec. 17, T. 1 S., R. 1 E., U. M.	1.418	1.418				
19 Rev.	H.M. Crist & Dorothy H. Crist	827 Grand Ave, Grand Junction, Colo.	E 1/2 E 1/2 NE 1/4 NW 1/4, Sec. 17, T. 1 S., R. 1 E., U. M.	1.403	1.403				
20	R. M. Lipes	Route 5, Grand Junction, Colo.	NW 1/4 NE 1/4, Sec. 17, T. 1 S., R. 1 E., U. M.	0.382	0.382				
21 Rev.	Earl Z. McCulley & Hazel McCulley	Fruitvale, Colo.	NW 1/4 NE 1/4, Sec. 17, T. 1 S., R. 1 E., U. M.	0.401	0.401				1 Rev.
22 Rev.	John F. Thompson & Naomi A. Thompson	2819 B. ROAD Grand Junction, Colo.	NW 1/4 NE 1/4, Sec. 17, T. 1 S., R. 1 E., U. M.	1.627	1.627				Rev.
23 Rev.	Walter Ladage & Inez Stella Ladage	Fruitvale, Colo.	NW 1/4 NE 1/4, Sec. 17, T. 1 S., R. 1 E., U. M.	0.943	0.943				Rev.
24 Rev. 2	Grand Junction Steel Fabricating Company	1101 3rd. Ave. Grand Junction, Colo.	NW 1/4 NE 1/4, Sec. 17, T. 1 S., R. 1 E., U. M.	0.524	0.524				Rev. 2
25	Mary A. Schorn	Fruitvale, Colo.	NW 1/4 NE 1/4, Sec. 17 T. 1 S., R. 1 E., U. M.	1.877	1.877				
26	C.R. Brown	Fruitvale, Colo.	NE 1/4 NE 1/4, Sec. 17, T. 1 S., R. 1 E., U. M.	0.728	0.728				
26A	C.R. Brown	Fruitvale, Colo.	NE 1/4 NE 1/4, Sec. 17, T. 1 S., R. 1 E., U. M.	0.145	0.058				
27	Cameron B. Grant	Fruitvale, Colo.	NE 1/4 NE 1/4, Sec. 17, T. 1 S., R. 1 E., U. M.	2.539	2.182				
28	Della C. Higgins & Charles Gilman Higgins	Fruitvale, Colo.	W 1/2 SE 1/4 SE 1/4, Sec. 8, T. 1 S., R. 1 E., U. M.	1.491	0.900				
28A	County of Mesa	Grand Junction, Colo.	W 1/2 SE 1/4 SE 1/4, Sec. 8 T. 1 S., R. 1 E., U. M.	0.137	0.137				
29 Rev. 2	F.B. Renfrow	502 Glenwood Ave, Canon City, Colo.	NE 1/4 NE 1/4, Sec. 17, T. 1 S., R. 1 E., U. M.	0.136	0.000				
30	C.C. Ford, Edna Florence Ford & Lyman H. Ford	Orchard Mesa Route 4, Grand Junction, Colo.	Lot A Ford Sub-Division SE 1/4 SE 1/4, Sec. 8	0.805	0.709				
31	C.C. Ford, Edna Florence Ford & Lyman H. Ford	Orchard Mesa Route 4, Grand Junction, Colo.	Lots B & C Ford Sub-Division SE 1/4 SE 1/4, Sec. 8	1.395	1.230				
32	Fred B. Oliver & Olga P. Oliver	1635 Grand Ave., Grand Junction, Colo.	NE 1/4 NE 1/4 NE 1/4, Sec. 17, T. 1 S., R. 1 E., U. M.	0.107	.000				
28B	Della C. Higgins & Charles Gilman Higgins	Fruitvale, Colo.	W 1/2 SE 1/4 SE 1/4 Sec. 8	0.407	0.407				
E 28B	Della C. Higgins & Charles Gilman Higgins	Fruitvale, Colo.	W 1/2 SE 1/4 SE 1/4 Sec. 8	0.097	0.097				

R.O.W. TABULATION OF PROPERTIES IN MESA

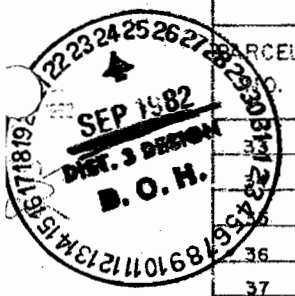
File copy

COUNTY S.H.No. 4 PROJ. F 001-1(8)

Design

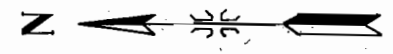
FEDERAL DIVISION NO.	DISTRICT	PROJ. NO.	SHEET NO.	TOTAL SHEETS
9	COLORADO	F 001-1(8)	3	

RIGHT OF WAY
 Rev. 5-7-54 T.L.K.
 Rev. 5-24-54 T.L.K.
 Rev. 8/13/82 A&E/ERI-X D.A.Z.



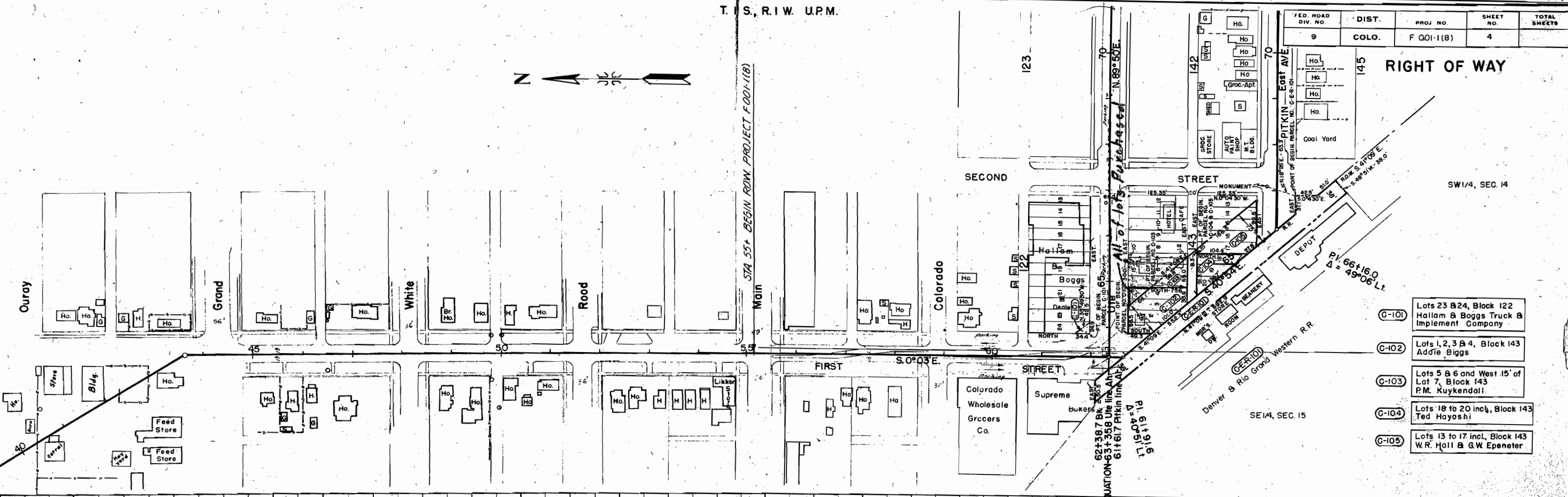
PARCEL	OWNER	ADDRESS	LOCATION	AREA IN ACRES		REMARKS	NO.
				TOTAL LAND IN TRACT	TO BE ACQUIRED		
	The Mesa County Union Oil Company	Fruitvale, Colo.	NE 1/4 NE 1/4 NE 1/4, Sec. 17 T. 1 S. R. 1 E. U.M.	0.041	0.00		33
	C.R. Brown	Fruitvale, Colo.	NE 1/4 NE 1/4 NE 1/4, Sec. 17 T. 1 S. R. 1 E. U.M.	0.023	0.00		34
	Guy Abramo & Grace Abramo	1631 E. Main, Grand Junction, Colo.	NE 1/4 NE 1/4 NE 1/4, Sec. 17 T. 1 S. R. 1 E. U.M.	0.021	0.00		35
36	Charles A. Howie & Emma Howie	Fruitvale, Colo.	SE 1/4 SE 1/4, Sec. 8 T. 1 S. R. 1 E. U.M.	1.822	1.573		36
37	Ira C. Huckaby, Hazel Huckaby, Iva L. Huckaby & Helen M. Huckaby	Fruitvale, Colo.	NE 1/4 NE 1/4 NE 1/4, Sec. 17 T. 1 S. R. 1 E. U.M.	0.137	0.00		37
38	J.D. Severson	1353 Grand Ave., Grand Junction, Colo.	SE 1/4 SE 1/4, Sec. 8 T. 1 S. R. 1 E. U.M.	0.528	0.360		38
39	Violet L. Owens, Percy H. Owens & M.E. McAllister	1703 Grand Ave., Grand Junction, Colo.	NW 1/4 NW 1/4, Sec. 16 T. 1 S. R. 1 E. U.M.	0.302	0.00		39
40	Walter W. Klein	3814 Bridge Ave., Cleveland, Ohio.	SW 1/4 SW 1/4, Sec. 9 T. 1 S. R. 1 E. U.M.	2.175	1.770		40
41 Rev. 2	R.A. Ring & Arma M. Ring	Route 1, Grand Junction, Colo.	SW 1/4 SW 1/4, Sec. 9 T. 1 S. R. 1 E. U.M.	0.099	0.044		41 Rev.
42 Rev.	Leland D. Clark & Wilma Clark	Clifton, Colo.	SW 1/4 SW 1/4, Sec. 9 T. 1 S. R. 1 E. U.M.	1.520	1.382		42 Rev.
43	Roy G. Monahan	c/o Leland Clark, Route 5, Grand Junction, Colo.	SW 1/4 SW 1/4, Sec. 9 T. 1 S. R. 1 E. U.M.	1.606	1.572		43
27A	Cameron B. Grant	Fruitvale, Colo.	NE 1/4 NE 1/4 Sec. 17 T. 1 S. R. 1 E. U.M.	0.009	0.009		27A
EASEMENTS							
E-R-1	Denver & Rio Grande Western Railroad		SW 1/4, Sec. 18 T. 1 S. R. 1 E. U.M.	7.462	6.777		E-R-1
ERI-X	COLO. DEPT. OF HWYS.		SW 1/4, Sec. 18 T. 1 S. R. 1 E. U.M.	42,632 Sq. Ft.	---	Conveyed to Grand Valley Rural Power Lines, Inc. Acquired as a portion of E-R-1	ERI-X
E-1	Grand Valley Irrigation Company	222 So. 6th Street, Grand Junction, Colo.	SW 1/4 NE 1/4, Sec. 18 T. 1 S. R. 1 E. U.M.	0.298	0.298		E-1
E-9	Clayton S. Meek & Mary B. Meek	2851 North Ave., Grand Junction, Colo.	SW 1/4 NE 1/4, Sec. 18 T. 1 S. R. 1 E. U.M.	0.320	0.320		E-9
E-2	Grand Junction Drainage District -- Charles M. Holmes (Attorney)	Raso Building, Grand Junction, Colo.	NW 1/4, Sec. 17 T. 1 S. R. 1 E. U.M.	0.276	0.276		E-2
E 28	Della C. Higgins & Charles Gilman Higgins	Fruitvale, Colo.	W. 1/2 S.E. 1/4 S.E. 1/4 Sec. 8, T. 1 S. R. 1 E., U.M.	0.160	0.160		E 28

T. S. R. I. W. U. P. M.

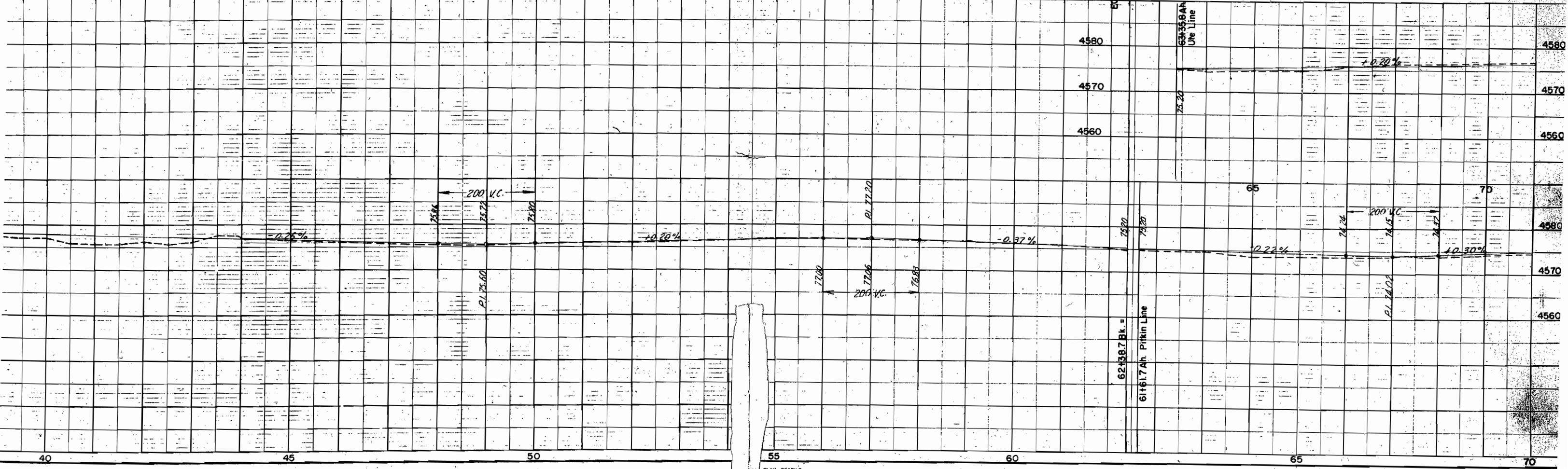


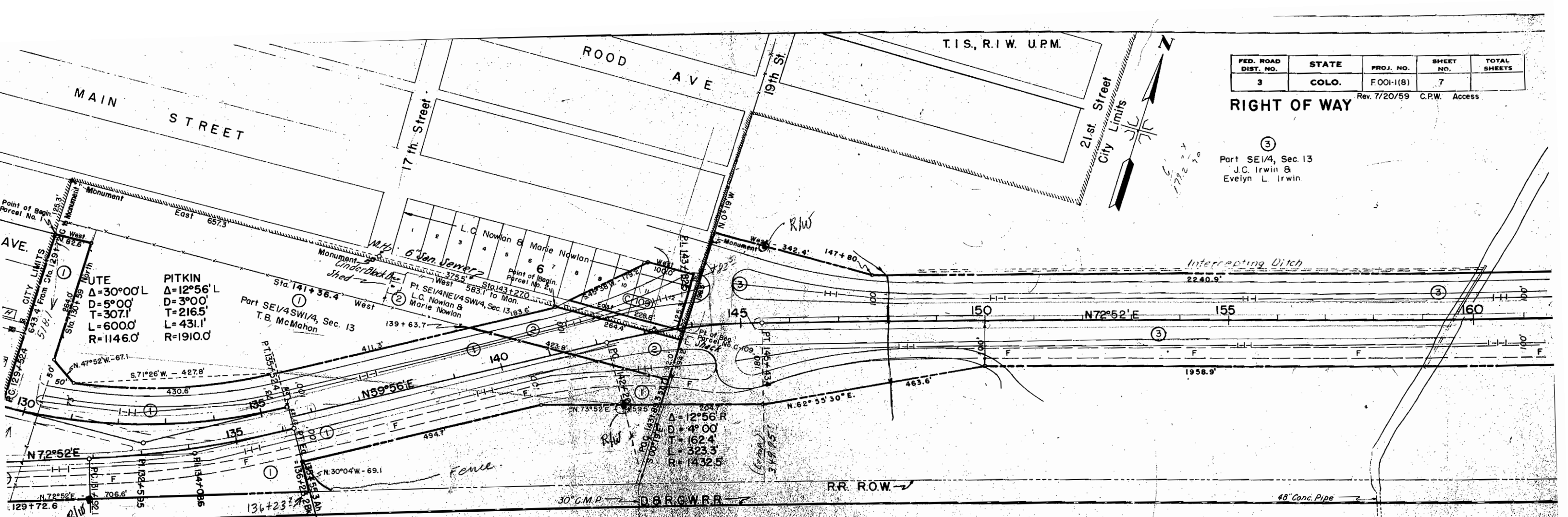
FED. ROAD DIV. NO.	DIST.	PROJ. NO.	SHEET NO.	TOTAL SHEETS
9	COLO.	F 001-1(8)	4	

RIGHT OF WAY



- (G-101) Lots 23 & 24, Block 122
Hallam & Boggs Truck & Implement Company
- (C-102) Lots 1, 2, 3 & 4, Block 143
Addie Biggs
- (C-103) Lots 5 & 6 and West .15' of Lot 7, Block 143
P.M. Kuykendall
- (C-104) Lots 18 to 20 incl., Block 143
Ted Hayoshi
- (C-105) Lots 13 to 17 incl., Block 143
W.R. Hall & G.W. Epeneter





FED. ROAD DIST. NO.	STATE	PROJ. NO.	SHEET NO.	TOTAL SHEETS
3	COLO.	F001-1(8)	7	

Rev. 7/20/59 C.P.W. Access

③
Part SE1/4, Sec. 13
J.C. Irwin &
Evelyn L. Irwin

UTE
 $\Delta = 30^{\circ}00' L$
 $D = 5^{\circ}00'$
 $T = 307.1'$
 $L = 6000'$
 $R = 11460'$

PITKIN
 $\Delta = 12^{\circ}56' L$
 $D = 3^{\circ}00'$
 $T = 216.5'$
 $L = 431.1'$
 $R = 1910.0'$

$\Delta = 12^{\circ}56' R$
 $D = 4^{\circ}00'$
 $T = 162.4'$
 $L = 323.3'$
 $R = 1432.5'$

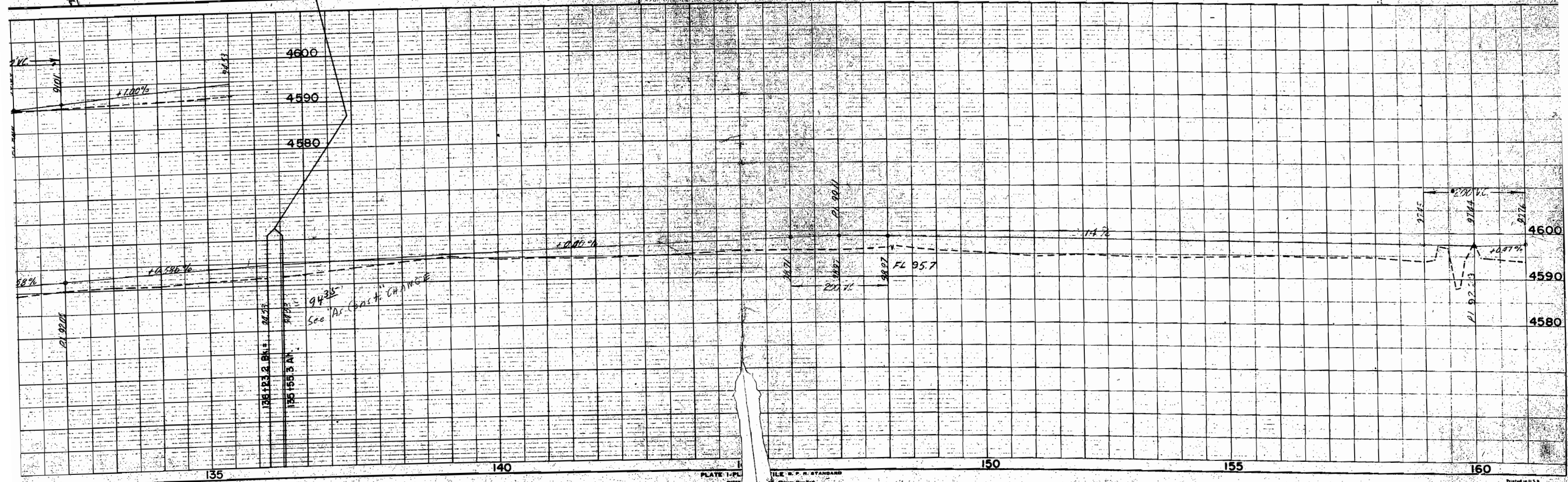


PLATE 1-PL

1/16" = 1' P. R. STANDARD

Printed in U.S.A. by IMPERIAL TRACING CO.

T.1S, R.1W, U.P.M.

T.1S, R.1E U.P.M.

ERIX CONVEYED TO: GRAND VALLEY RURAL POWER LINES, INC.

SW 1/4 NW 1/4, Sec. 18
George E. Marron &
Ella K. Marron

FED. ROAD DIST. NO.	STATE	PROJ. NO.	SHEET NO.	TOTAL SHEETS
3	COLO.	F 001-1(a)	8	

RIGHT OF WAY

Rev. 4-2-54 T.L.K.
For Parcels 5 & 6 and
and Parcel 2.A.1
Rev. 7/20/59 CPW Access
Rev. 6-30-62 DAZ Add ERI-X

W 1/2 SE 1/4 NW 1/4,
Sec. 18
Lillian W. Jarvis

Part SE 1/4, Sec. 15
J.C. Irwin &
Evelyn L. Irwin

Grand Avenue Extension

Drain Ditch

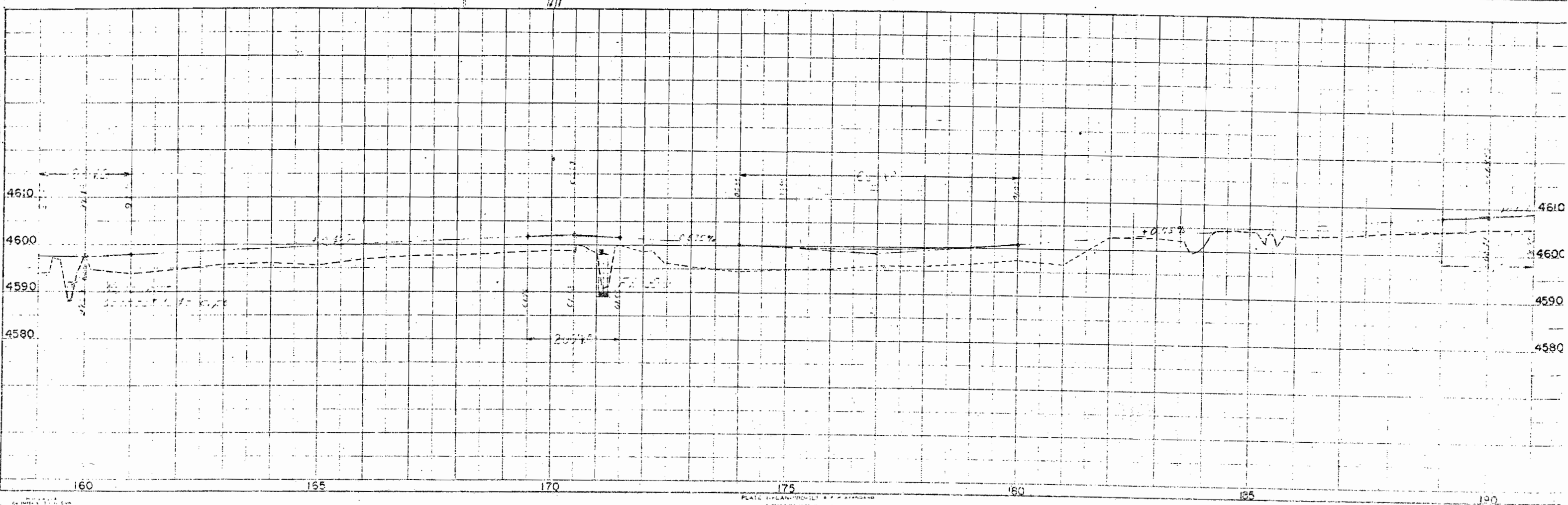
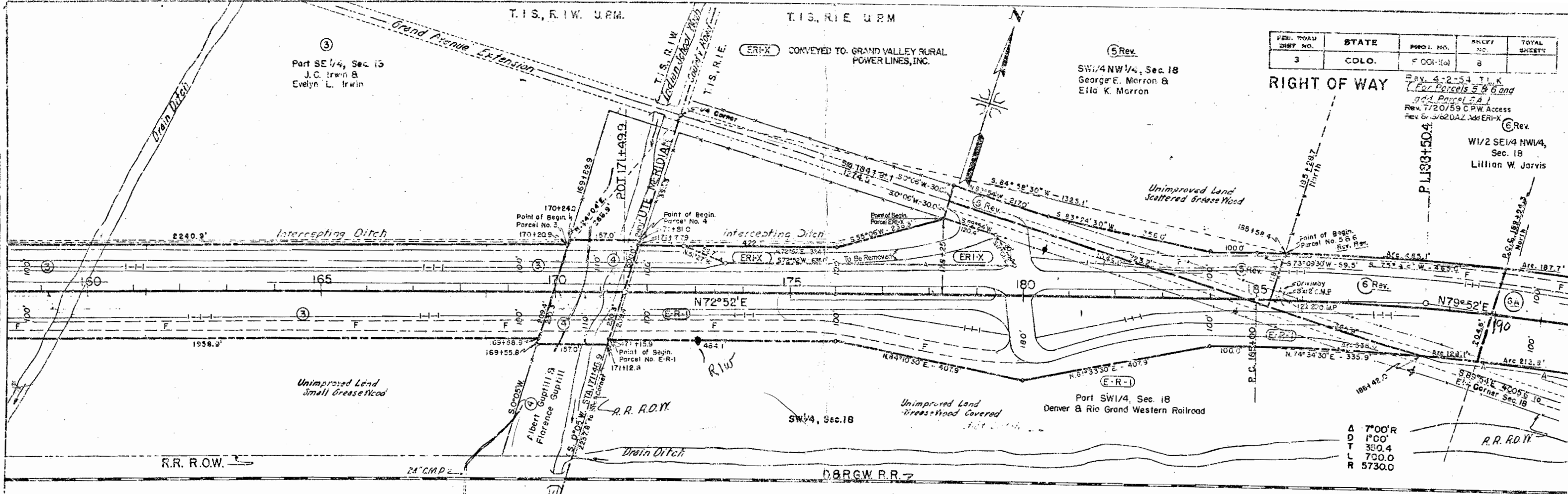
T.1S, R.1W
T.1S, R.1E

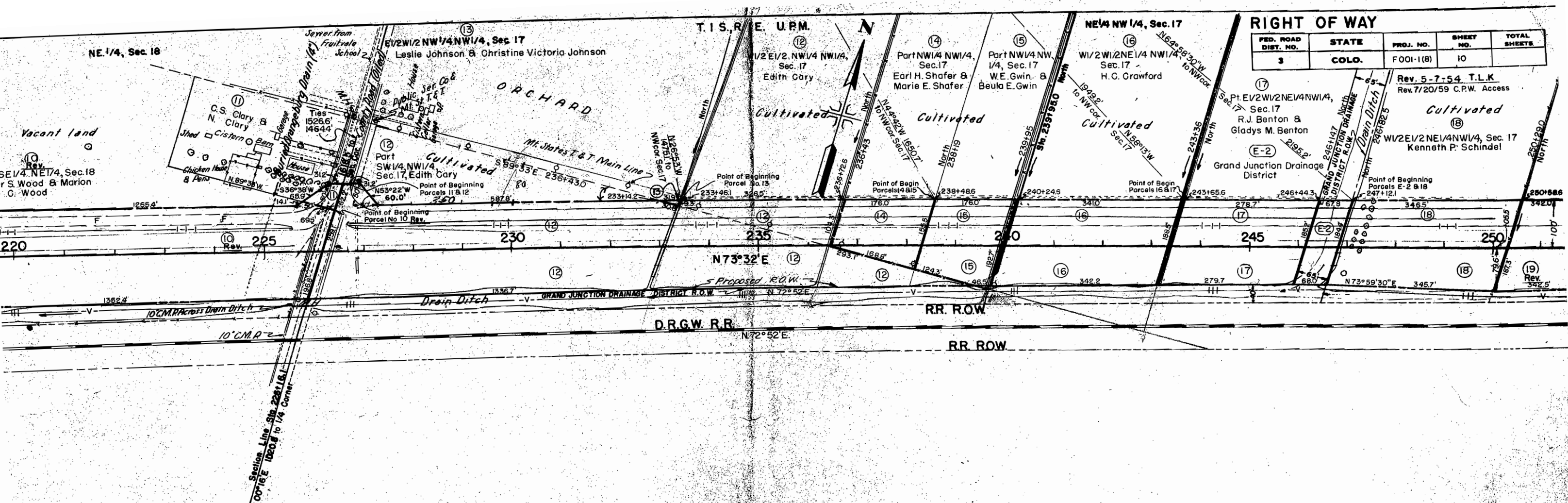


R. Oliver

PLAN

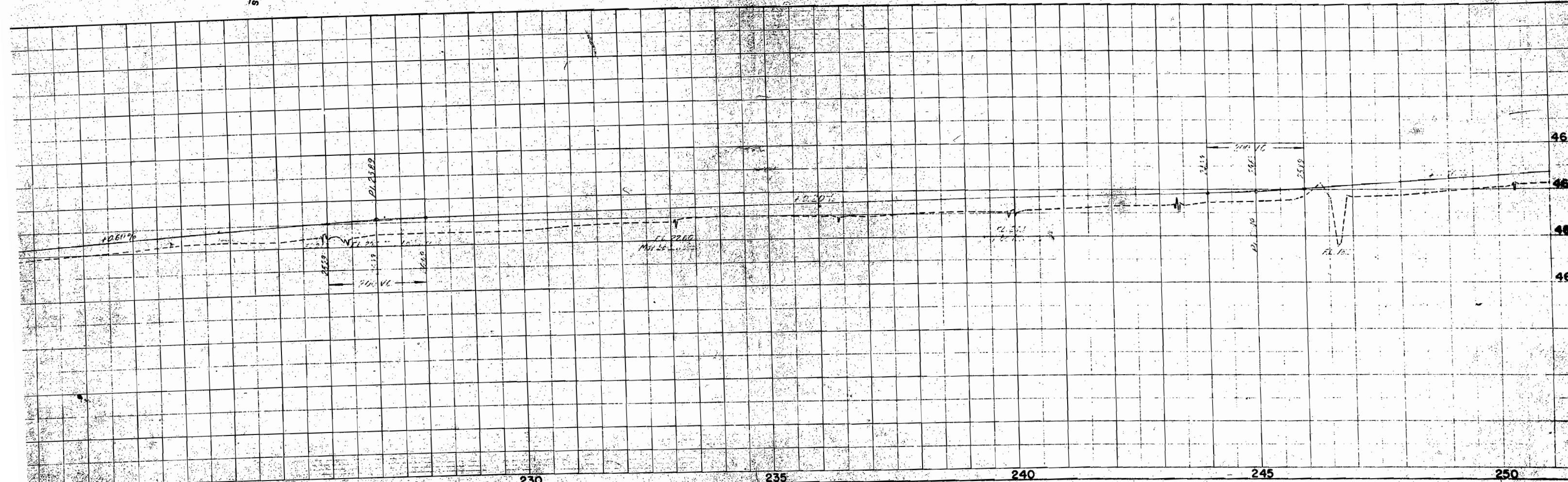
PROFILE





FED. ROAD DIST. NO.	STATE	PROJ. NO.	SHEET NO.	TOTAL SHEETS
3	COLO.	F001-1(8)	10	

Rev. 5-7-54 T.L.K.
Rev. 7/20/59 C.P.W. Access



T.I.S.R.I.E. U.P.M.

Rev. 6-29-54 T.L.K.
(Parcel 29 Rev. on Rt.)
Rev. 7/20/59 C.P.W. Access

Rev. 6-7-54 T.L.K.
Rev. 7-23-56 S.W.Z. 288, E 288

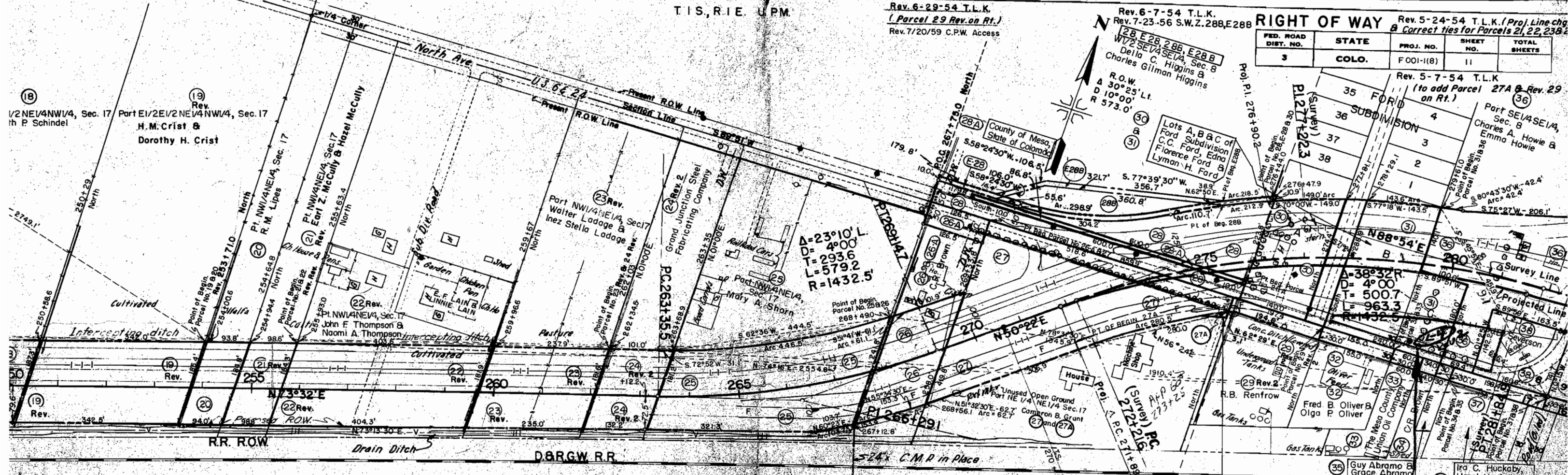
RIGHT OF WAY
Rev. 5-24-54 T.L.K. (Proj. Line chg
& Correct ties for Parcels 21, 22, 23 & 24)

FED. ROAD DIST. NO.	STATE	PROJ. NO.	SHEET NO.	TOTAL SHEETS
3	COLO.	F001-18)	11	

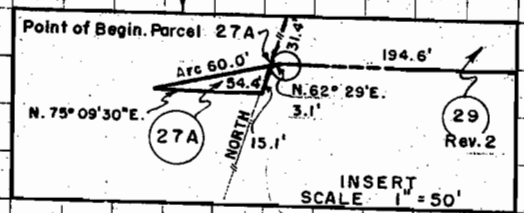
Rev. 5-7-54 T.L.K.
(to add Parcel 27A & Rev. 29 on Rt.)

(18) 1/2 NE 1/4 NW 1/4, Sec. 17
th P. Schindel

(19) Rev.
Part E 1/2 NE 1/4 NW 1/4, Sec. 17
H.M. Crist &
Dorothy H. Crist

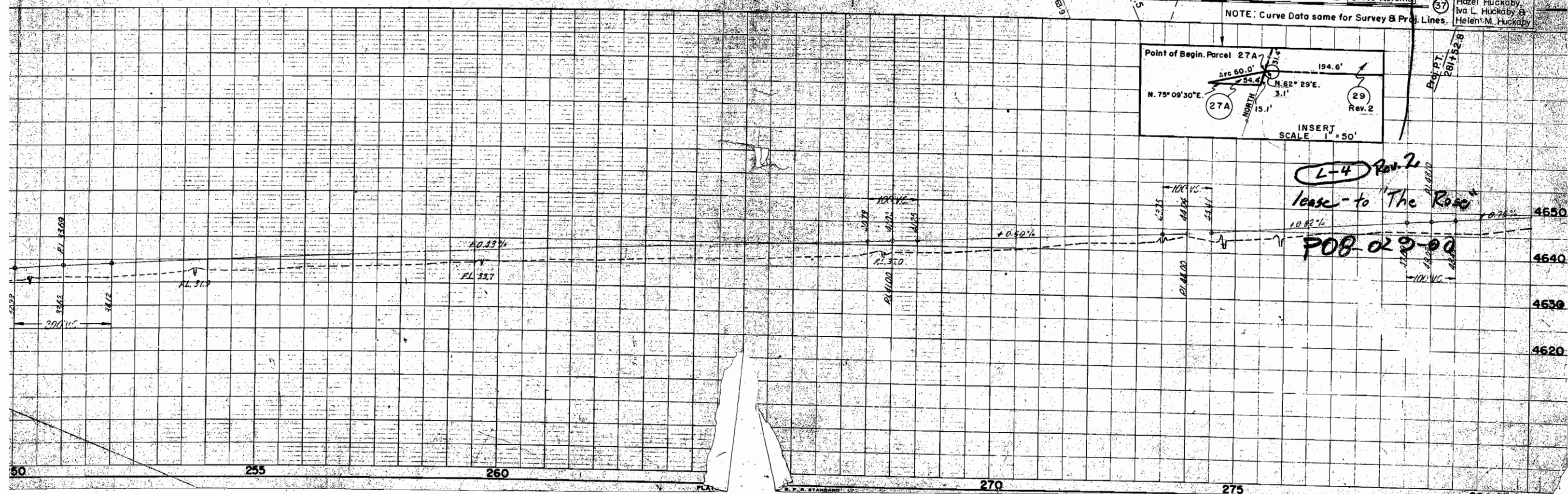


NOTE: Curve Data same for Survey & Proj. Lines.



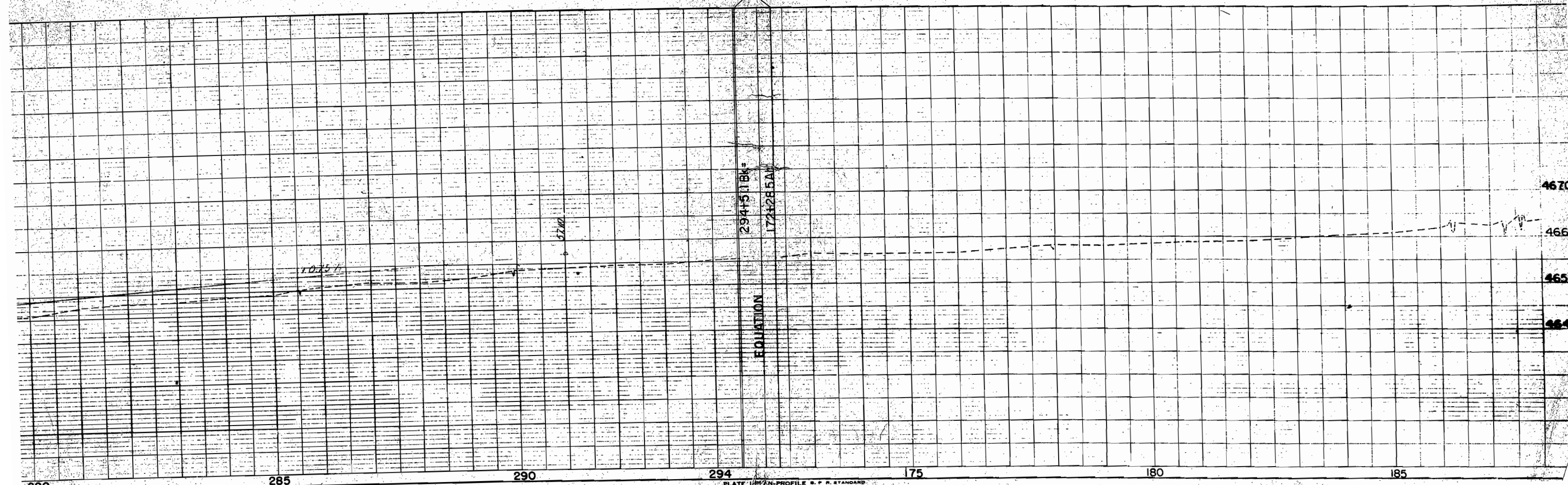
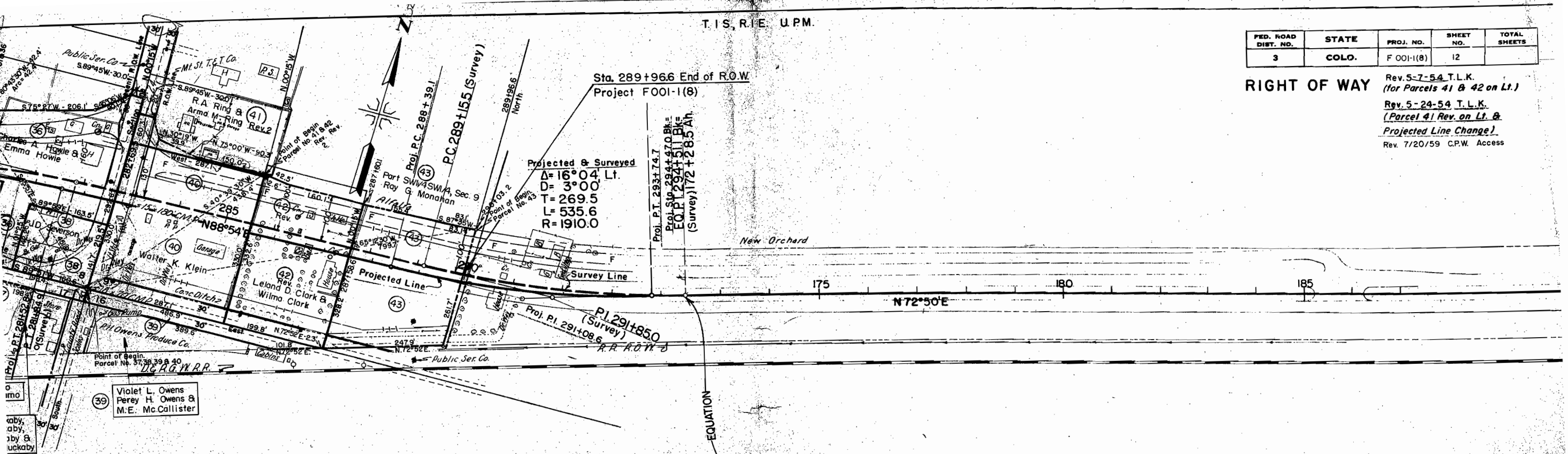
L-4 Rev. 2
lease - to "The Rose"

POB 029-00



FED. ROAD DIST. NO.	STATE	PROJ. NO.	SHEET NO.	TOTAL SHEETS
3	COLO.	F 001-1(8)	12	

RIGHT OF WAY
 Rev. 5-7-54 T.L.K.
 (for Parcels 41 & 42 on Lt.)
 Rev. 5-24-54 T.L.K.
 (Parcel 41 Rev. on Lt. &
 Projected Line Change)
 Rev. 7/20/59 C.P.W. Access



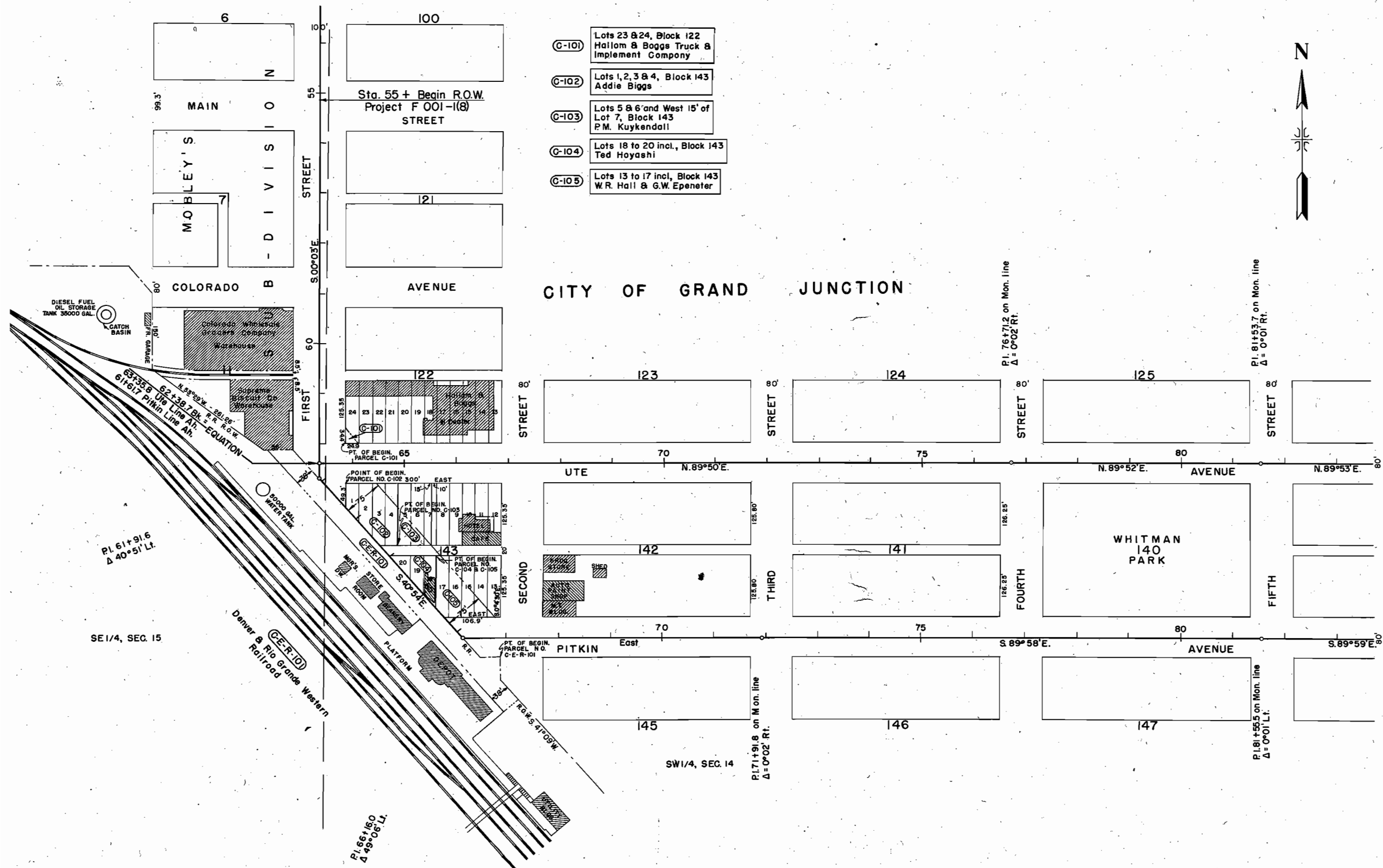
COLORADO STATE HIGHWAY DEPARTMENT

PROJECT F001-1(8)
R.O.W. OWNERSHIP MAP

MESA COUNTY
T.1S., R.1W., UTE M.
SCALE: 1" = 100'

FEDERAL ROAD DIVISION NO.	DISTRICT	PROJ. NO.	SHEET NO.	TOTAL SHEETS
9	COLORADO	F 001-1 (8)	13	

RIGHT OF WAY

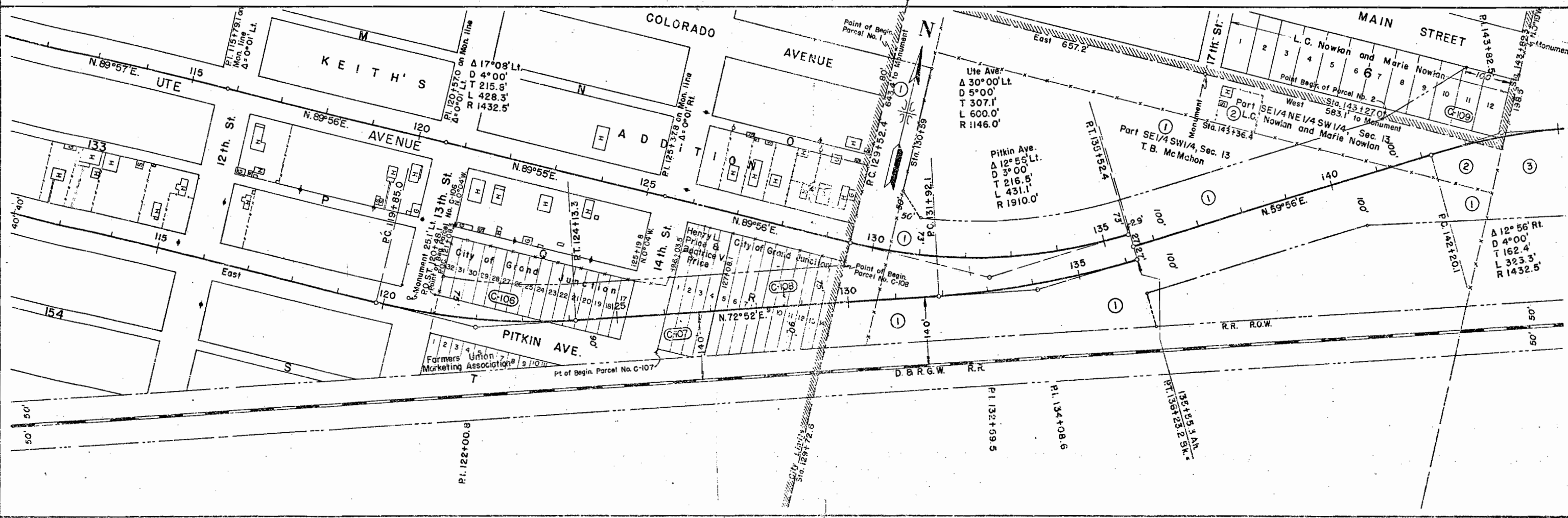
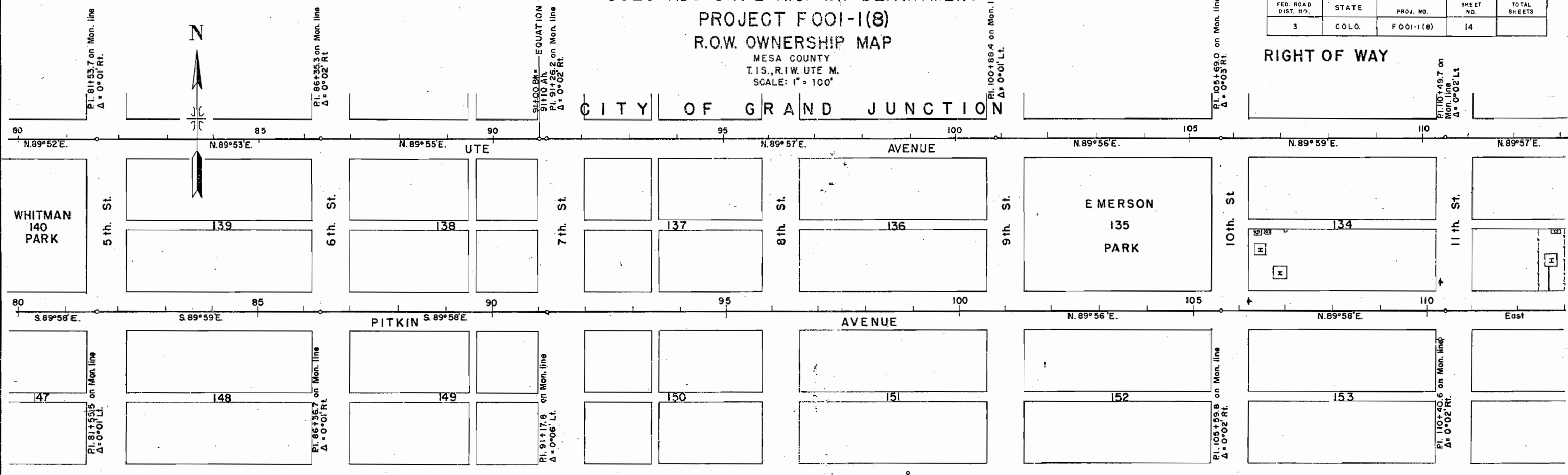


COLORADO STATE HIGHWAY DEPARTMENT
 PROJECT F001-1(8)
 R.O.W. OWNERSHIP MAP
 MESA COUNTY
 T.1S., R.1W. UTE M.
 SCALE: 1" = 100'

FED. ROAD DIST. NO.	STATE	PROJ. NO.	SHEET NO.	TOTAL SHEETS
3	COLO.	F001-1(8)	14	

RIGHT OF WAY

CITY OF GRAND JUNCTION



MICROFILMED

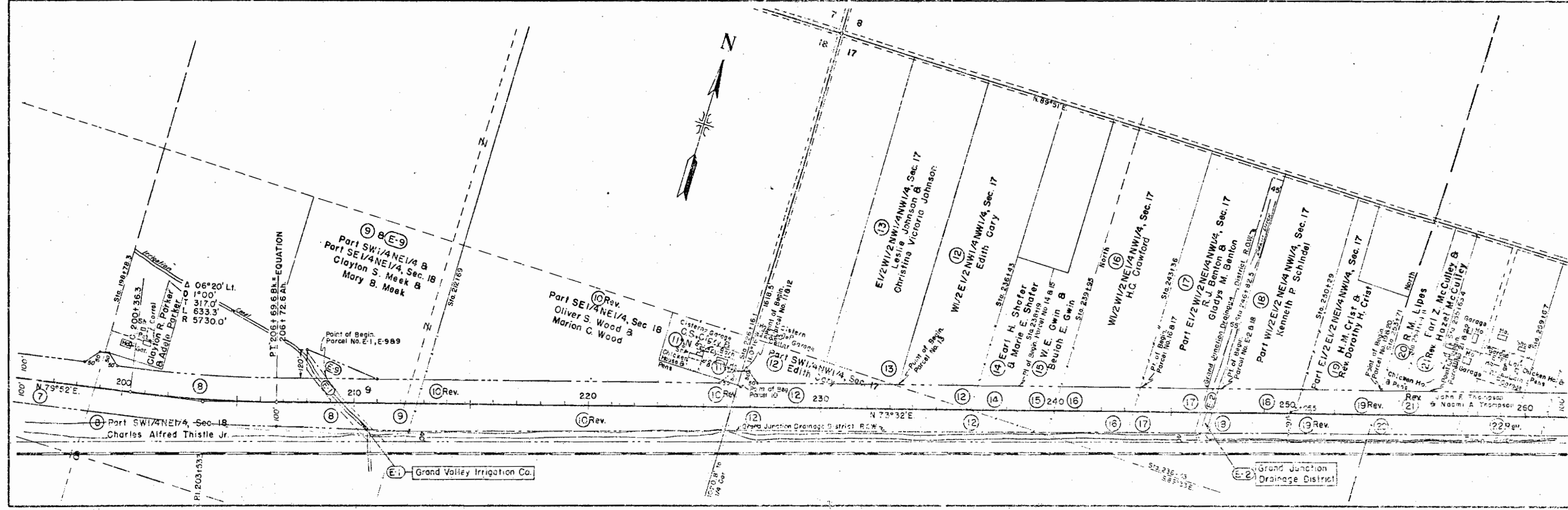
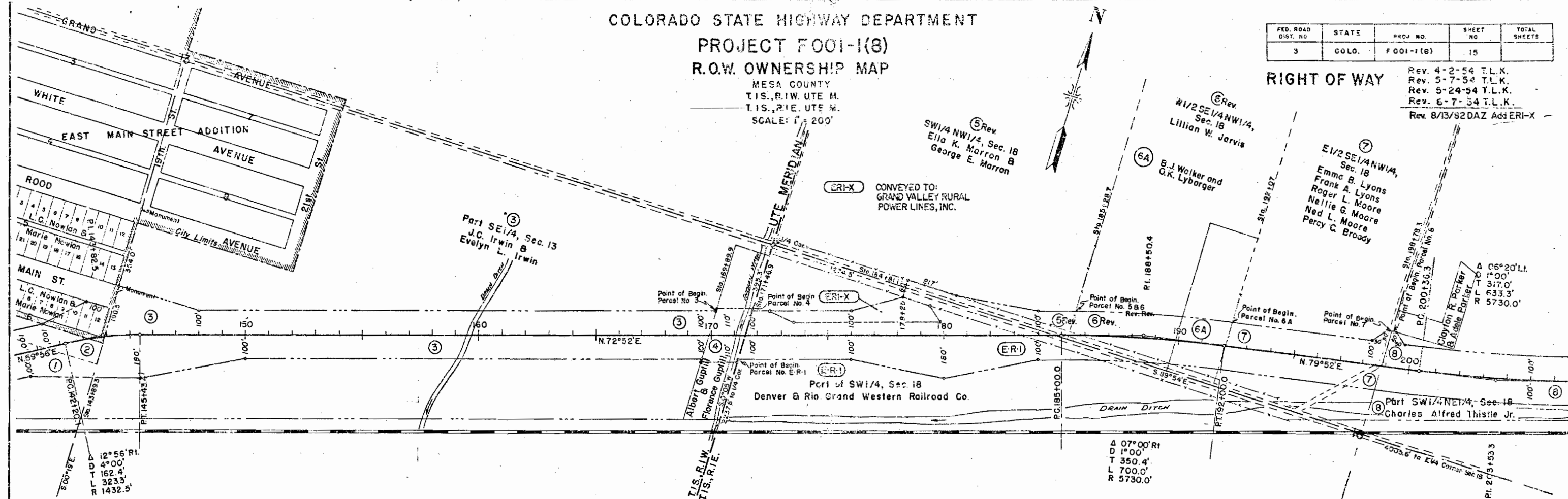
COLORADO STATE HIGHWAY DEPARTMENT

PROJECT F001-1(8)
R.O.W. OWNERSHIP MAP

MESA COUNTY
T.1S., R.1W. UTE M.
T.1S., R.1E. UTE M.
SCALE: 1" = 200'

FED. ROAD DIST. NO.	STATE	PRJ. NO.	SHEET NO.	TOTAL SHEETS
3	COLO.	F 001-1(8)	15	

RIGHT OF WAY
 Rev. 4-2-54 T.L.K.
 Rev. 5-7-54 T.L.K.
 Rev. 5-24-54 T.L.K.
 Rev. 6-7-54 T.L.K.
 Rev. 8/13/52 DAZ Add ERI-X



COLORADO STATE HIGHWAY DEPARTMENT
PROJECT F001-1(8)
R.O.W. OWNERSHIP MAP
 MESA COUNTY
 T.I.S., R.I.E. UTE M.
 SCALE 1" = 200'

FED. ROAD DIST. NO.	STATE	PROJ. NO.	SHEET NO.
3	COLO.	F 001-1(8)	16

RIGHT OF WAY Rev. 5-7-54 T.L.K.
 Rev. 5-24-54 T.L.K.
 Rev. 6-7-54 T.L.K.
 Rev. 6-29-54 T.L.K.
 Rev. 7-23-56 SW2. 28B, E28B

