

COLORADO DEPARTMENT OF HIGHWAYS

PLAN AND PROFILE OF PROPOSED FEDERAL AID PROJECT NO. F 001-5 (13) STATE HIGHWAY NO. 6 PROWERS COUNTY

Draw 32

FEDERAL ROAD REGION NO.	DIVISION	PROJ. NO.	SHEET NO.
9	COLORADO	F 001-5 (13)	1

RIGHT OF WAY		REVISION
Granada Holly		3-30-60 Added Note

- INDEX OF SHEETS
- SHEET NO. 1. SKETCH MAP AND TITLE PAGE.
 2. TABULATION OF PROPERTIES.
 3-6. ALIGNMENT PLAN AND PROFILE SHOWING RIGHT OF WAY (EASEMENTS).

NOTE:
 THESE PLANS SHOW ONLY LOCATION OF R.O.W. PURCHASED ON THIS PROJECT, NOT COMPLETE ALIGNMENT

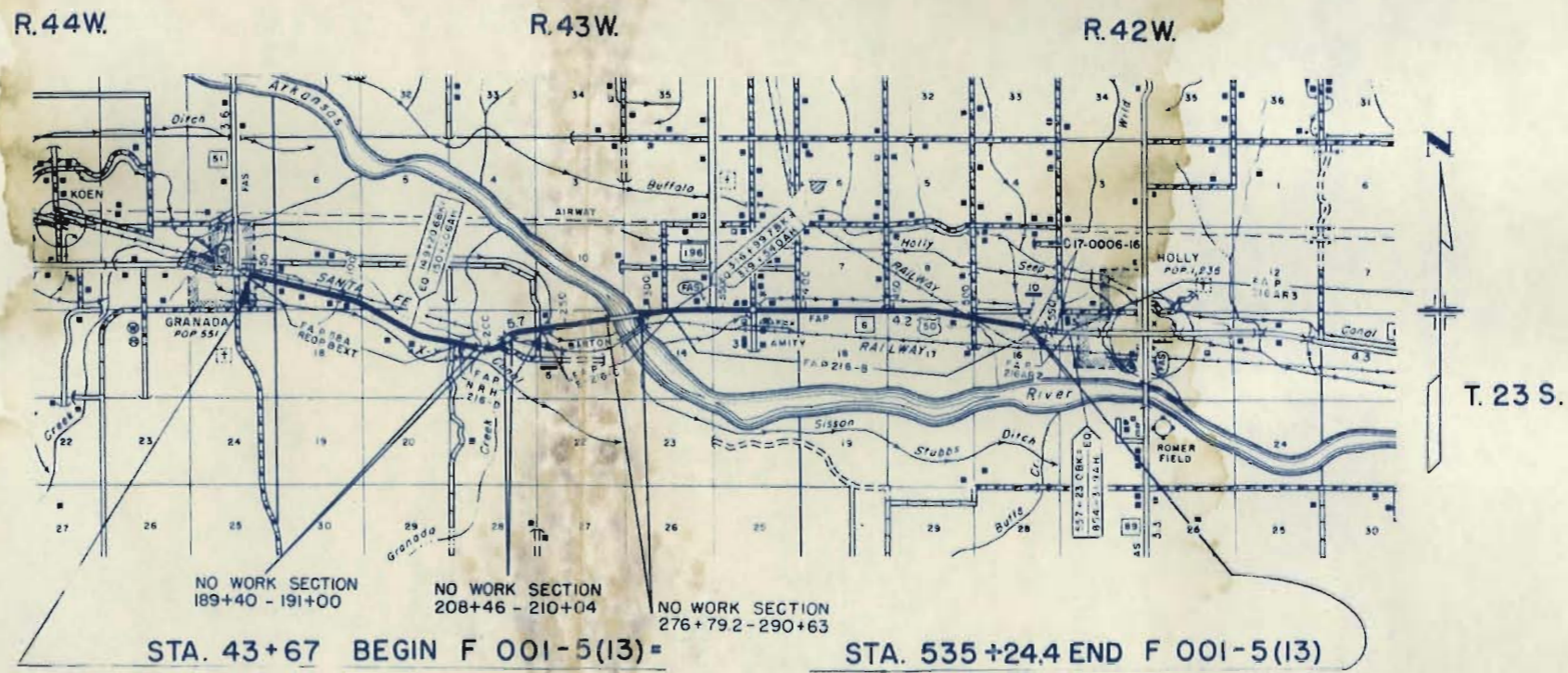
CONVENTIONAL SIGNS



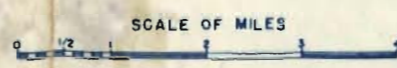
SCALES OF ORIGINAL DRAWINGS

ON PLAN 1 IN = 100 FT
 ON PROFILE 1 IN = 100 FT HORIZONTAL
 1 IN = 10 FT VERTICAL
 GRADE LINE ON PROFILE IS SHOWN AS GRADE OF FINISHED ROAD
 GROSS LENGTH OF PROJECT 48,801.4 FT. = 9.242 MI.
 NET LENGTH OF PROJECT 47,100.0 FT. = 8.920 MI.

RIGHT OF WAY



FILE COPY
 DO NOT REMOVE



R. O. W. TABULATION OF PROPERTIES IN PROWERS COUNTY S.H.No. 6 PROJ. F 001-5 (13)

FEDERAL ROAD DIVISION NO.	DISTRICT	PROJ. NO.	SHEET NO.	TOTAL SHEETS
9	COLORADO	F 001-5 (13)	2	

RIGHT OF WAY		REVISIONS	
Granada-Holly		3-30-60	Changed Ownership # 2
REMARKS		4-8-60	E-1 Rev.
			FCM
			JLS

PARCEL NO.	OWNER	ADDRESS	LOCATION	AREA IN ACRES		REMAINDER				REMARKS	
				PARCEL	TO BE ACQUIRED						
			T. 23 S., R. 43 W. SECTION 7								
E-1	ATCHISON TOPEKA & SANTA FE RAILWAY CO.		PART OF SE 1/4 OF SE 1/4	0.124	0.124					PERMANENT EASEMENT 3/30/60; \$100	Rev. E-1
2	J.W. NEAL & FAITH NEAL J.T.		PART OF SE 1/4 OF SE 1/4	0.037	0.037					\$3000 3/31/60	
			SECTION 17								
E-3	BEN L. JONES & NORA BELL JONES J.T.		PART OF NE 1/4	0.092	0.092					PERMANENT EASEMENT 3/22/60; \$100	E-3
			SECTION 16								
E-4	STATE OF COLO. (Being Purchased By A.H. TRUITT)		PART OF SW 1/4 OF NW 1/4	0.092	0.092					PERMANENT EASEMENT	E-4
TE-5	TRUITT CATTLE COMPANY		NE 1/4, E 1/2 OF NW 1/4, N 1/2 OF SE 1/4, NW 1/4 OF NW 1/4.	0.014	0.014					TEMPORARY EASEMENT 3/18/60; \$10	TE-5
			T. 23 S., R. 42 W. SECTION 16								
TE-6A	DELETED									DELETED	TE 6 A
TE-6-B	DELETED									DELETED	TE-6-B
			W.OF DRAIN DITCH								
TE-7	AMERICAN CRYSTAL SUGAR COMPANY		TRACT IN NE 1/4	0.451	0.451					TEMPORARY EASEMENT 3/28/60; \$100	TE-7
TE-7-A	HOLLY FLOOD CONTROL DRAINAGE & SANITATION DISTRICT		TRACT IN NE 1/4	0.689	0.689					TEMPORARY EASEMENT 3/16/60; \$5500	TE-7-A
TE-7-B	AMERICAN CRYSTAL SUGAR COMPANY		TRACT IN NE 1/4	0.459	0.459					TEMPORARY EASEMENT	TE-7-B

SE 1/4 SEC. 7
T. 23 S., R. 43 W.

ATCHISON TOPEKA &
Rev. SANTA FE RAILWAY CO.

REV. NO.	DATE	BY	REVISIONS
3-30-60			Changed Ownership to 2
4-8-60			E-1 Rev.

RIGHT OF WAY
S.W. 1/4 SEC. 8
T. 23 S., R. 43 W.

106+ to 124+ - Req'd deepen
borrow ditches, Rt. & Lt. to grade
as shown in profile. Use material
to raise grade Sta. 96+ to 108+

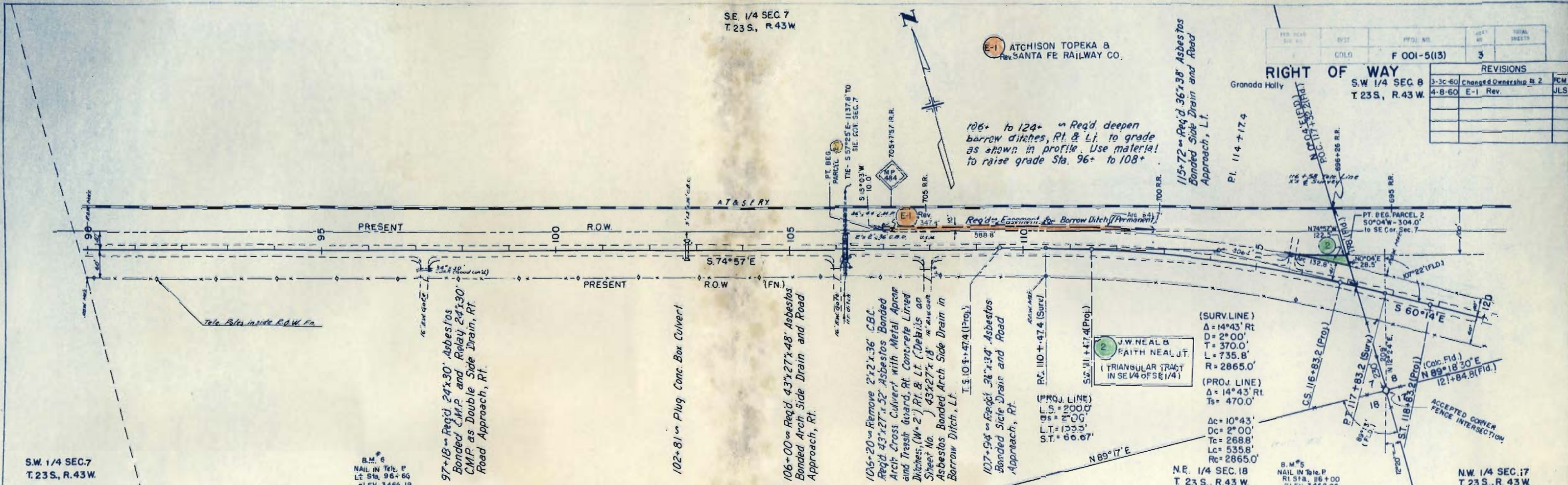
115+72 - Req'd 36"x38" Asbestos
Bonded Side Drain and Road
Approach, Lt.

Pl. 114+17.4

116+58 - See Plan
X's & Survey

898+96 R.R.

695 R.R.



DATE	BY	REVISIONS

S.W. 1/4 SEC. 7
T. 23 S., R. 43 W.

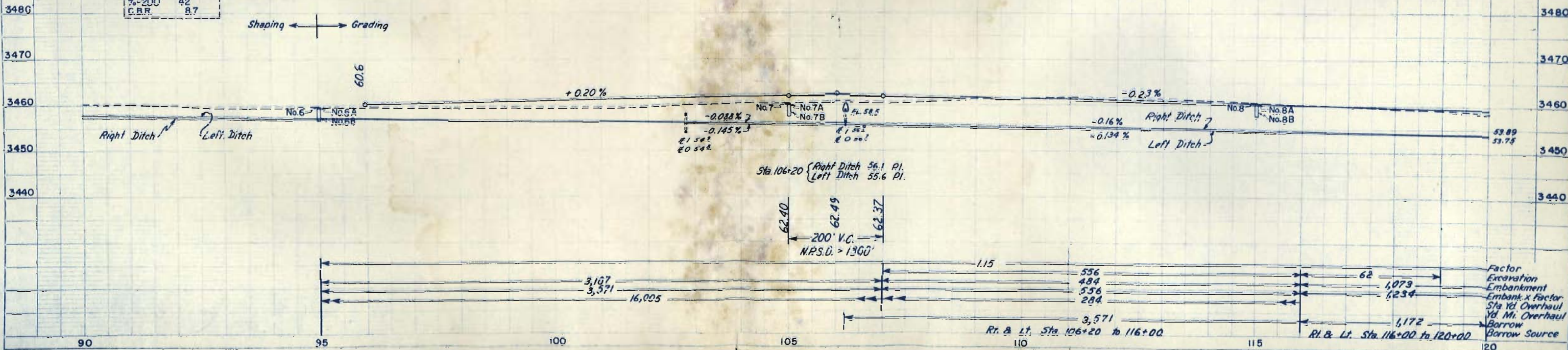
B.M. #6
NAIL IN Tole. P.
LE Sta. 96+66
ELEV. 3456.19

N.W. 1/4 SEC. 7
T. 23 S., R. 43 W.

- Test No. 6 Oil Mat
- Test No. 6A Surf. Comp.
- Test No. 6B A-4-(1)
- Similar to Test No. 1B
- Test No. 7 Oil Mat
- Test No. 7A Surf. Comp.
- Test No. 7B A-2-4-(0)
- L.L. N.V.
- P.I. N.P.
- %-200 23
- CBR. 20.7
- Test No. 8 Oil Mat
- Test No. 8A Surf. Comp.
- Test No. 8B A-2-4-(0)
- Similar to Test No. 7B

Test No. 1B A-4-(1)	Sta. 47+00
L.L.	22.5
P.I.	7.4
%-200	42
CBR.	8.7

Shaping ← → Grading



DATE	BY	REVISIONS

Factor
Excavation
Embankment
Embank x Factor
Sta Yd. Overhaul
Yd. M. Overhaul
Borrow Source

N.E. 1/4 SEC. 17
T. 23 S., R. 43 W.

REVISIONS	

NO.	DATE	TOTAL SHEETS
1		4

RIGHT OF WAY N.W. 1/4 SEC. 16
T. 23 S., R. 43 W.
Granada Holly

STATE OF COLO.
(Being Purchased by
A.H. TRUITT.)
(PORTION OF SW 1/4 OF
NW 1/4, LING S OF
AT S.F.R.Y. & N. OF
SH. NO. 6.)

NO.	DATE	BY	REVISION

NO.	DATE	BY	REVISION

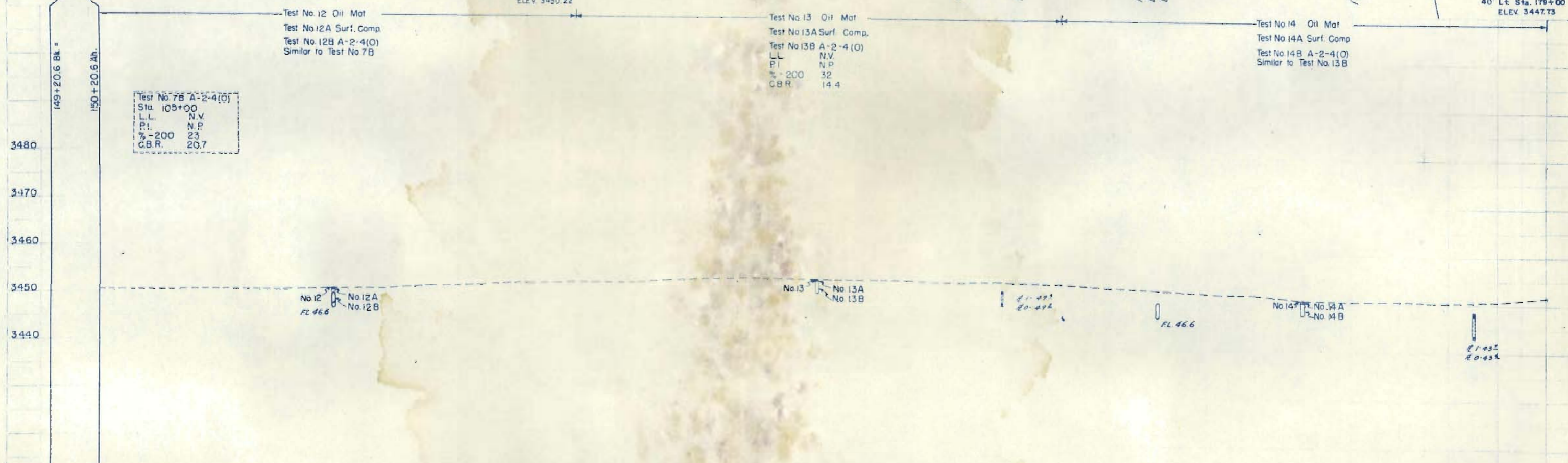
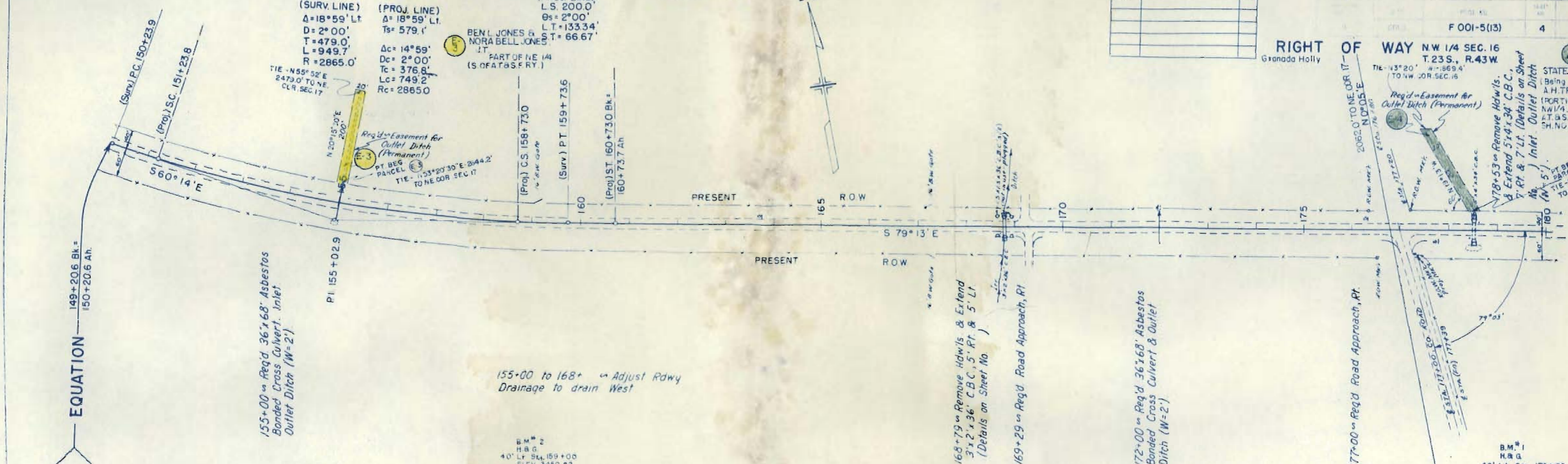
(SURV. LINE)
Δ = 18° 59' Lt
D = 2° 00'
T = 479.0'
L = 949.7'
R = 2865.0'

(PROJ. LINE)
Δ = 18° 59' Lt
Ts = 579.1'

(PROJ. LINE)
L.S. 200.0'
Os = 2° 00'
L.T. = 133.34'
O.T. = 66.67'

BEN L. JONES &
NORA BELL JONES
J.T.
PART OF NE 1/4
(S. OF AT S.F.R.Y.)

Ac = 14° 59'
Dc = 2° 00'
Tc = 376.8'
Lc = 749.2'
Rc = 2865.0'



$\Delta = 8^{\circ}55' Lt$
 $D = 2^{\circ}00'$
 $T = 223.4'$
 $L = 445.8'$
 $R = 2865.0'$
 $S = 0.021'$
 $Hor. S.D. = 1015'$

543+ to 550+
 Req'd Detour Lt (Details on
 this sheet) & Remove Detour Lt.
 Remove & Rebuild 400 lin. ft. of
 fence Lt.

547+00 Req'd Double
 48" x 56" Cross Culvert
 under Detour Lt. &
 Remove 2 CMF's.

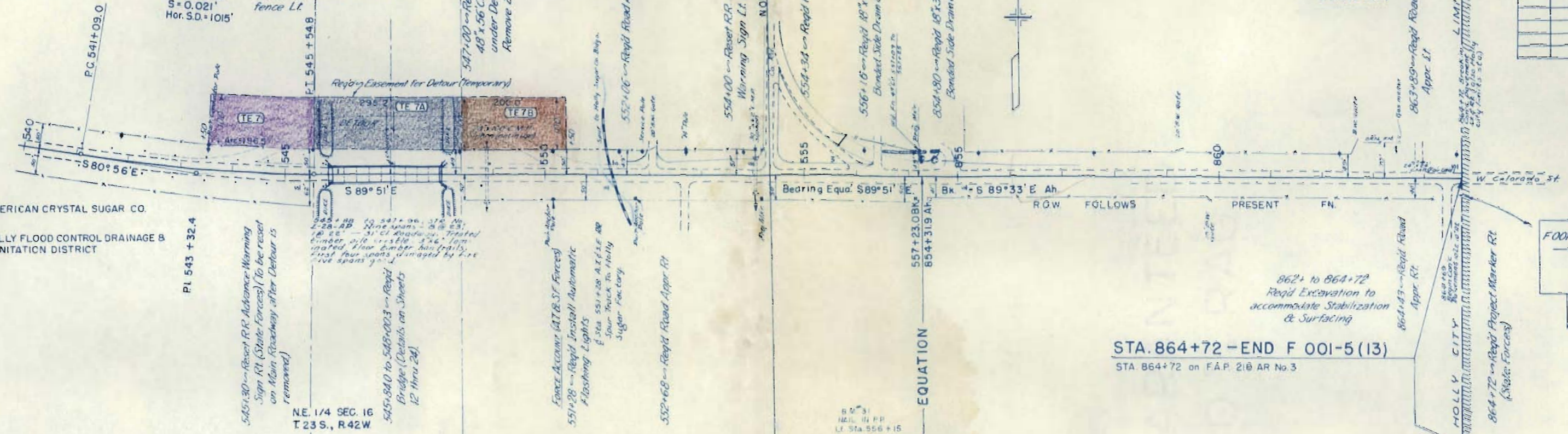
N.W. 1/4 SEC. 15
 T. 23 S., R. 42 W.

RIGHT OF WAY
 Granada-Holly

F 001-5(13) 6

REVISIONS	

- TE-7 AMERICAN CRYSTAL SUGAR CO.
- TE-7B HOLLY FLOOD CONTROL DRAINAGE & SANITATION DISTRICT
- TE-7A HOLLY FLOOD CONTROL DRAINAGE & SANITATION DISTRICT



545+30 Req'd RR Advance-Warning
 Sign R1 (State Forces) (To be reset
 on Main Roadway after Detour is
 removed).

545+80 to 548+00 3 Spans No. 2-28-29
 18' 0" - 31' 0" Roadway. Treated
 Lumber, 6" x 8" x 12" Laminated
 Floor Lumber horizontally.
 First four spans damaged by fire
 (see spans 7)

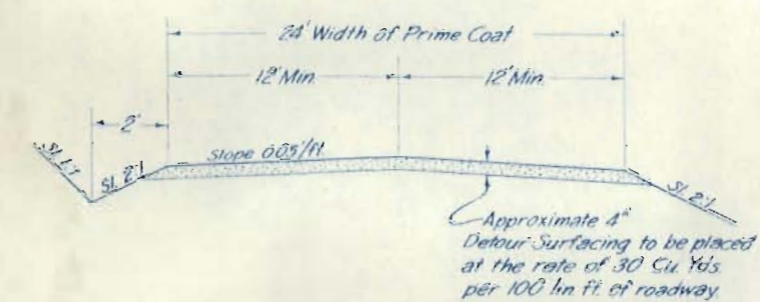
545+840 to 548+003 Req'd
 Bridge (Details on Sheets
 12 thru 24).

551+28 Req'd Install Automatic
 Flashing Lights
 of Sta. 551+28 AT L&E RR
 Spur Track to Holly
 Sugar Factory.

552+68 Req'd Road Appr. Rt.

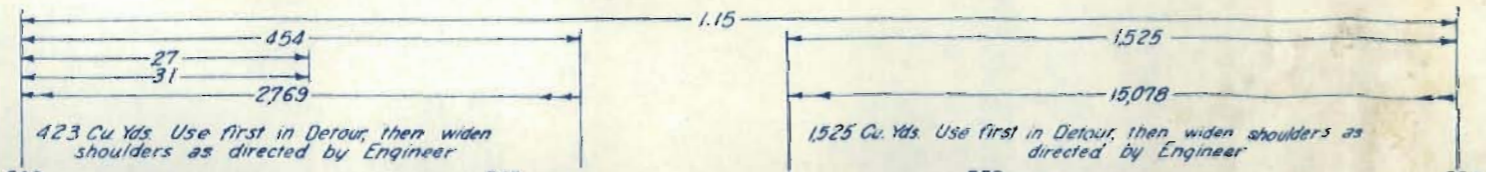
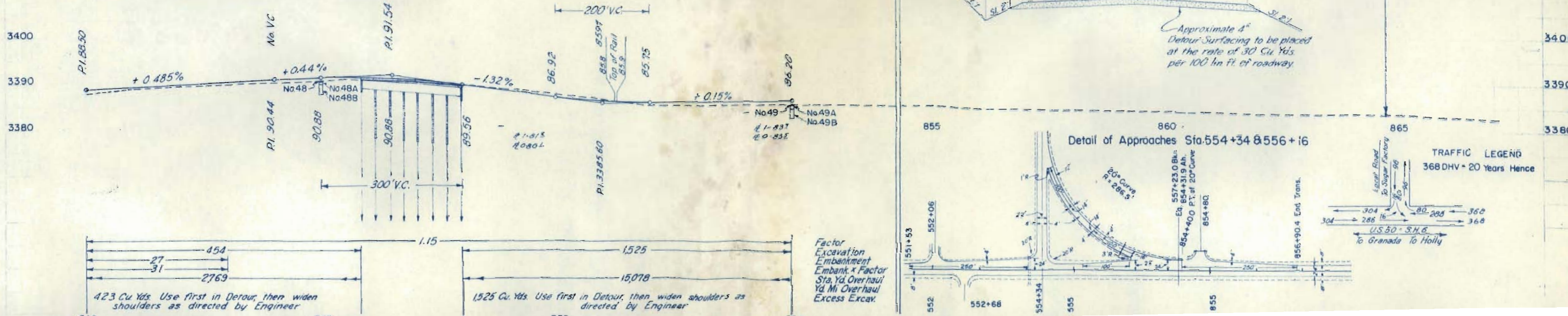
STA. 864+72 - END F 001-5 (13)
 STA 864+72 on F.A.P. 218 AR No. 3

TYPICAL SECTION FOR DETOUR
 STA. 543+ TO STA. 550+



Test No. 448 A-6(II)

STA	505+00
LL	37.1
PI	17.3
%	200 84
C.B.R.	2.6



Factor
 Excavation
 Embankment
 Embank x Factor
 Sta. Yd. Overhaul
 Yd. Mi. Overhaul
 Excess Excav.

TRAFFIC LEGEND
 368 DHV - 20 Years Hence

21773

21774
21775