

- INDEX OF SHEETS**
- SHEET NO. 1 TITLE SHEET
 - 2 TABULATION OF PROPERTIES.
 - 3-4 ALIGNMENT PLAN AND PROFILE.
 - SHOWING RIGHT OF WAY
 - 5 OWNERSHIP MAP

CONSTR. ENGRS. COPY

COLORADO
DEPARTMENT OF HIGHWAYS
PLAN AND PROFILE OF PROPOSED
FEDERAL AID PROJECT NO. F 004-1(15)
STATE HIGHWAY No. 1
LARIMER COUNTY

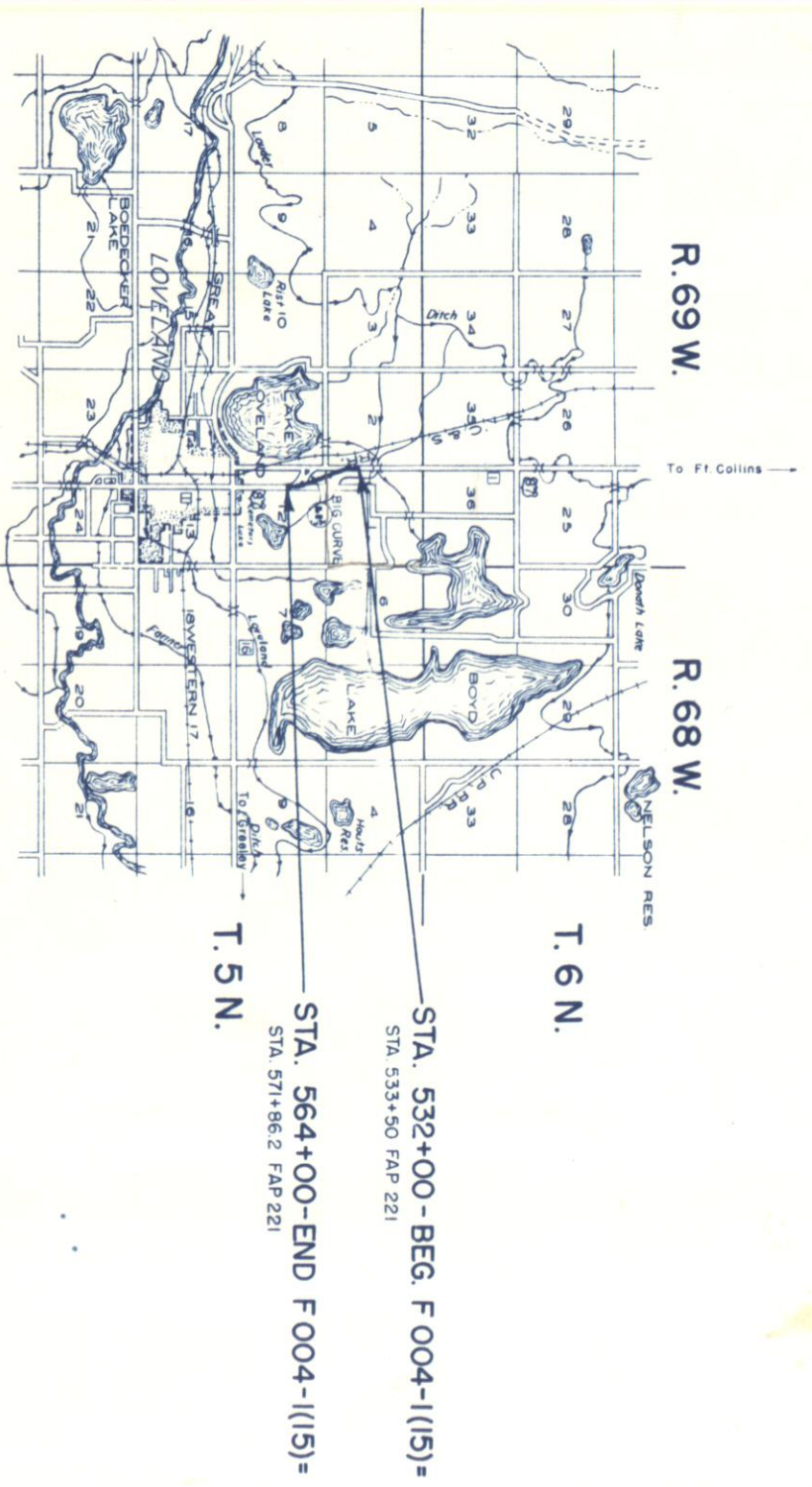
Rev Feb 1954

FED. ROAD DIVISION NO.	STATE	PROJ. NO.	SHEET NO.	SHEETS
9	COLO	F004-1(15)	1	

CONVENTIONAL SIGNS
 Cons. ROW File

SCALES ON ORIGINAL TRACINGS
 ON PLAN, 1 IN. = 100 FT.
 ON PROFILE, 1 IN. = 100 FT. HORIZONTAL
 1 IN. = 10 FT. VERTICAL
 GRADE LINE ON PROFILE IS SHOWN AS GRADE OF FINISHED ROAD
 GROSS LENGTH OF PROJECT } 3200.0 FT. = 0.606 MI.
 NET LENGTH OF PROJECT }

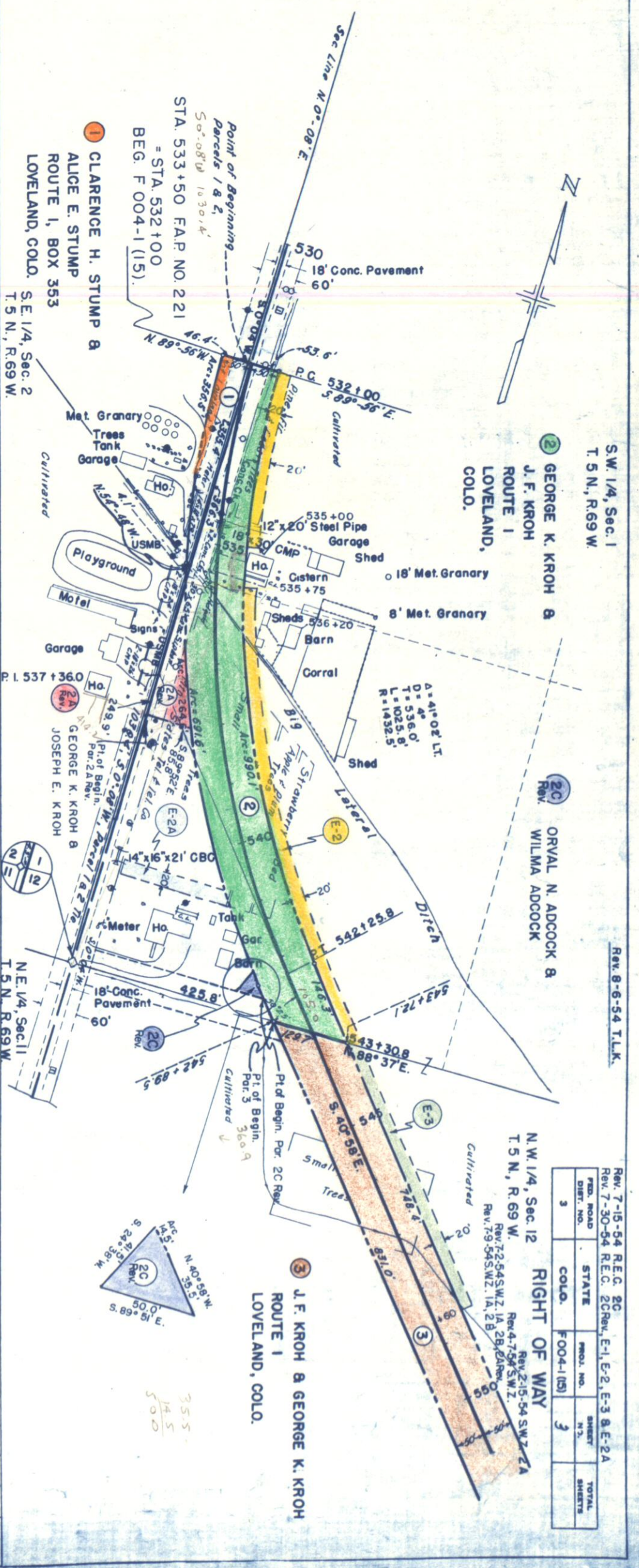
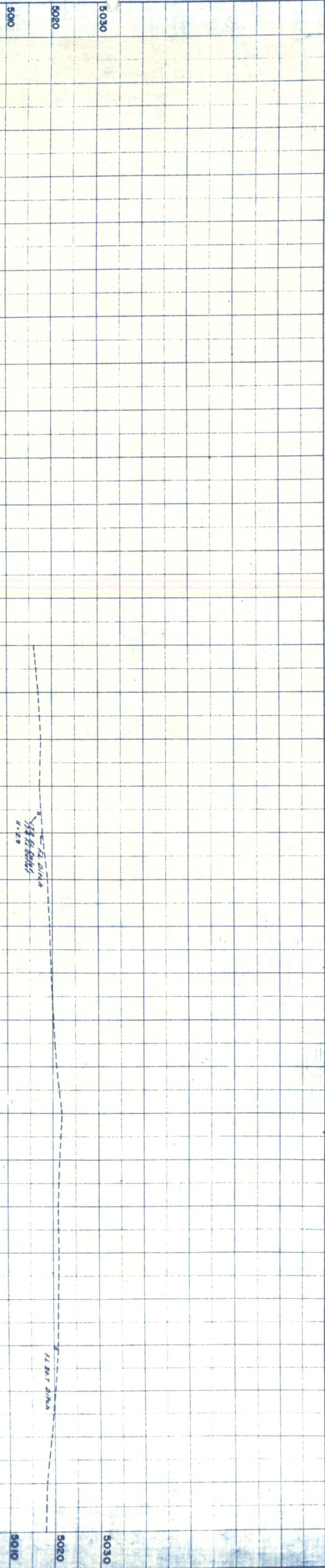
RIGHT OF WAY



CONSTR. ENGRS. COPY

PROFILE
 SURVEYED BY J. M. McIver
 PLOTTED BY L. H. Anderson
 GRADES CHECKED
 B.M. NOTED
 STRUCTURE NO. 1 KD
 DATE 12-51
 12-51
 12-51

PLAN
 SURVEYED BY J. M. McIver
 PLOTTED BY L. H. Anderson
 ALIGNMENT CHECKED
 RT. OF WAY CHECKED
 DATE 12-51
 12-51
 12-51



S.W. 1/4, Sec. 1
 T. 5 N., R. 69 W.
 2 GEORGE K. KROH &
 J. F. KROH
 ROUTE 1
 LOVELAND,
 COLO.

2C ORVAL N. ADCOCK &
 WILMA ADCOCK

N.W. 1/4, Sec. 12
 T. 5 N., R. 69 W.
 3 J. F. KROH & GEORGE K. KROH
 ROUTE 1
 LOVELAND, COLO.

Rev. 7-15-54 REG. 2C
 Rev. 7-30-54 REC. 2C
 Rev. E-1, E-2, E-3 & E-2A
 Rev. 4-7-54 S.W.Z.
 Rev. 7-2-54 S.W.Z. 1A, 2B, 2A, 2B
 Rev. 7-9-54 S.W.Z. 1A, 2B

RD. ROAD DIST. NO.	STATE	PROJ. NO.	SHEET NO.	TOTAL SHEETS
3	COLO.	FOO4-1(15)	3	

Rev. 8-6-54 T.L.M.

35.5
 14.5
 50.0

DATE 12-31-51
 BY L.M. Miller
 L.H. Anderson
 A.J. Shurtliff

PLAN
 SURVEYED
 PLOTTED
 ALIGNED
 CHECKED
 REVISIONS
 12-19

DATE 12-31-51
 BY L.M. Miller
 L.H. Anderson
 A.J. Shurtliff

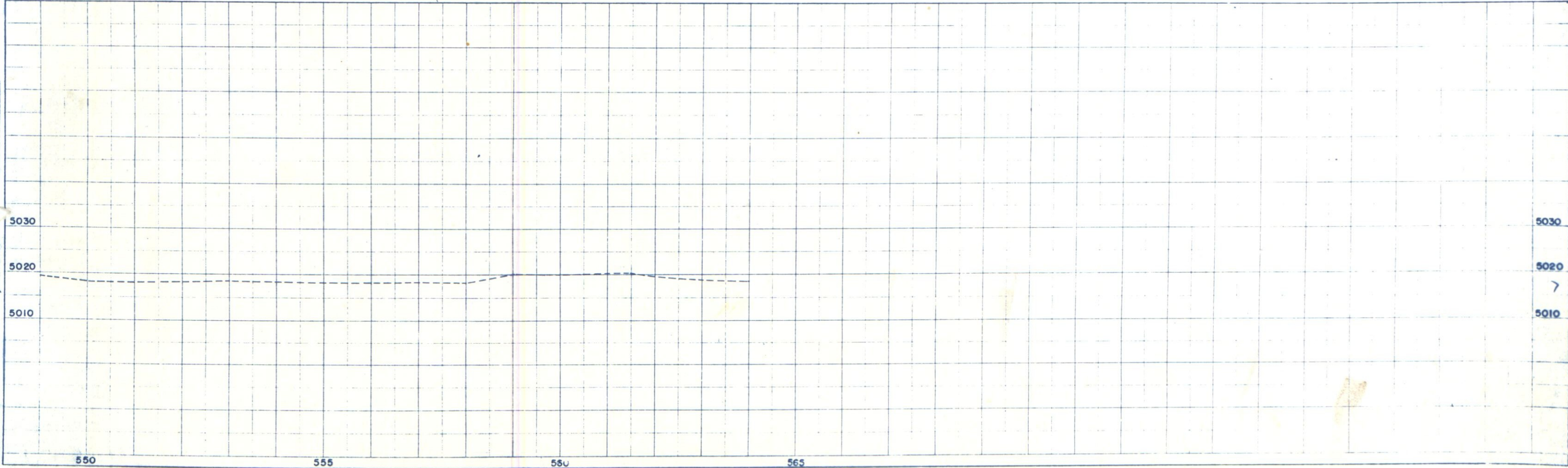
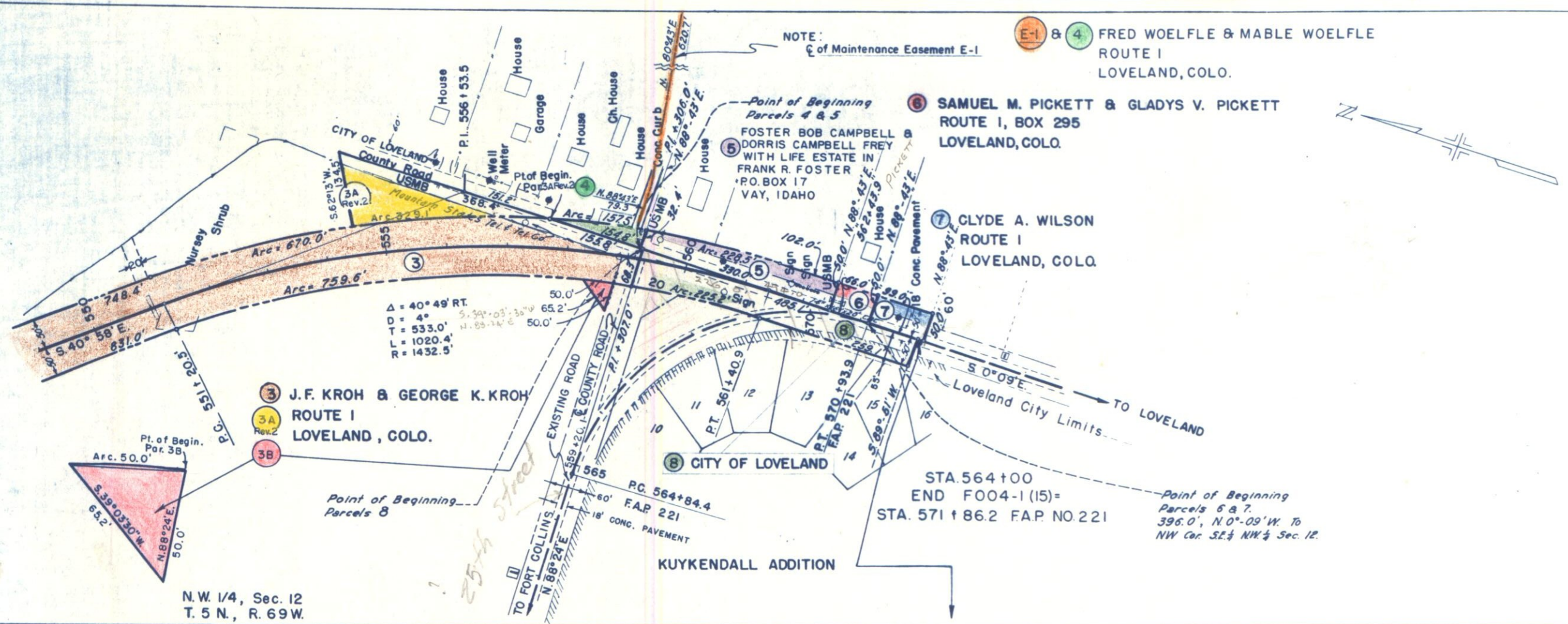
PROFILE
 SURVEYED
 GRADES CHECKED
 B.M. NOTED
 STRUCTURE

NOTE:
 ☐ of Maintenance Easement E-1

E-1 & 4 FRED WOELFLE & MABLE WOELFLE
 ROUTE 1
 LOVELAND, COLO.

FED. ROAD DIST. NO.	STATE	PROJ. NO.	SHEET NO.	TOTAL SHEETS
3	COLO.	F 004-1(15)	4	

RIGHT OF WAY
 Rev. 2-15-54 S.W.Z. 3A
 Rev. 4-7-54 S.W.Z. 3A Rev.
 Rev. 7-2-54 S.W.Z. 3A Rev. 2, 3B
 Rev. 7-9-54 S.W.Z.
 Rev. 8-6-54 T.L.K.
 (to show ☐ of E-1)



550 555 560 565

