

# COLORADO DEPARTMENT OF HIGHWAYS

## PLAN AND PROFILE OF PROPOSED FEDERAL AID PROJECT NO. F 004-1(31) STATE HIGHWAY NO. 123

### LARIMER COUNTY RIGHT OF WAY

INFORMATION OBTAINED FROM AVAILABLE COUNTY RECORDS

SCALES OF ORIGINAL DRAWINGS

ON PLAN, 1 IN. = 100 FT.  
 ON PROFILE, 1 IN. = 100 FT. HORIZONTAL  
 1 IN. = 10 FT. VERTICAL

GRADE LINE ON PROFILE IS SHOWN AS GRADE OF FINISHED ROAD

NET LENGTH OF PROJECT IN R.O.W. = 2.681 MI. R.70W.

#### CONVENTIONAL SIGNS

- CENTER LINE
- COUNTY LINE
- TOWNSHIP OR RANGE LINE
- SECTION LINE
- LAND LINES
- CITY LIMITS
- RAILROAD
- BARBED WIRE FENCE
- WOVEN WIRE - COMBINATION FENCE
- TELE. & TELEG. LINE
- POWER LINE
- PRESENT ROAD (PLAN SHEETS)
- RIGHT OF WAY LINE
- ACCESS POINTS (FREEWAYS)
- C. OF A. LINE (CONTROL OF ACCESS)
- ACCESS DENIED BY DEED
- TOP OF CUTS
- TOE OF FILLS
- DETOUR

FEDERAL ROAD REGION NO.	DIVISION	PROJECT NO.	SHEET NO.
9	COLORADO	F 004-1(31)	1

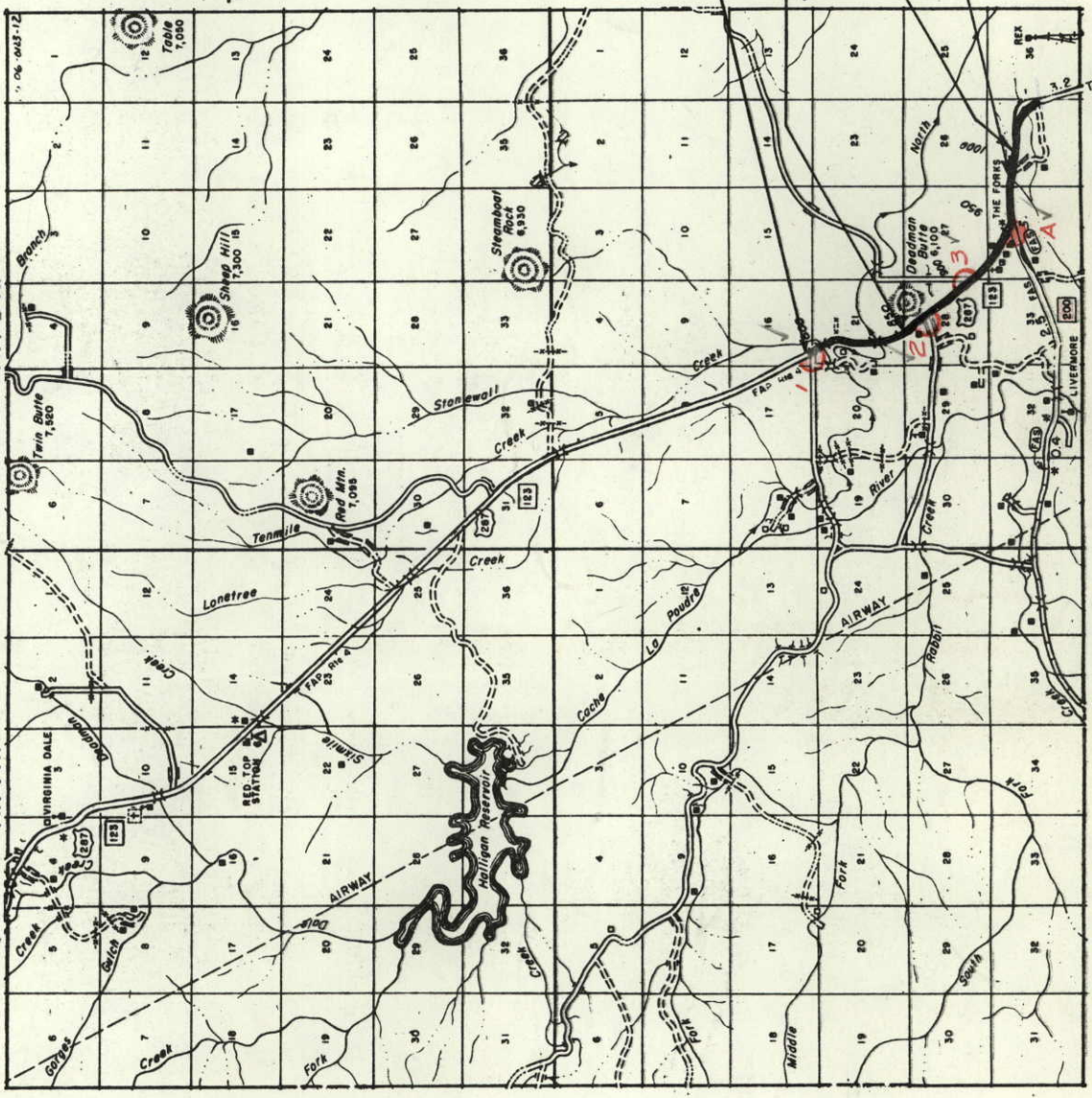
REVISIONS	REC
7-10-63 length of R.O.W.	

#### RIGHT OF WAY

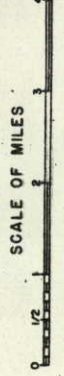
Let. SH 200 & US 287 N-S

#### INDEX OF SHEETS

- SHEET NO.
- 1 TITLE SHEET
  - 2 TABULATION SHEET
  - 3-8 PLAN & PROFILE SHEET
  - 9 OWNERSHIP MAP



STA. 798+00 BEGIN F004-1(31) CONST. =  
 STA. 798+00 END F004-1(29)  
 BEGIN R.O.W. F 004-1(31)  
 STA. 855 + 75.5  
 END R.O.W. F 004-1(31)  
 STA. 997 + 00.0  
 STA. 982+20.0 END CONST.  
 F004-1(31)



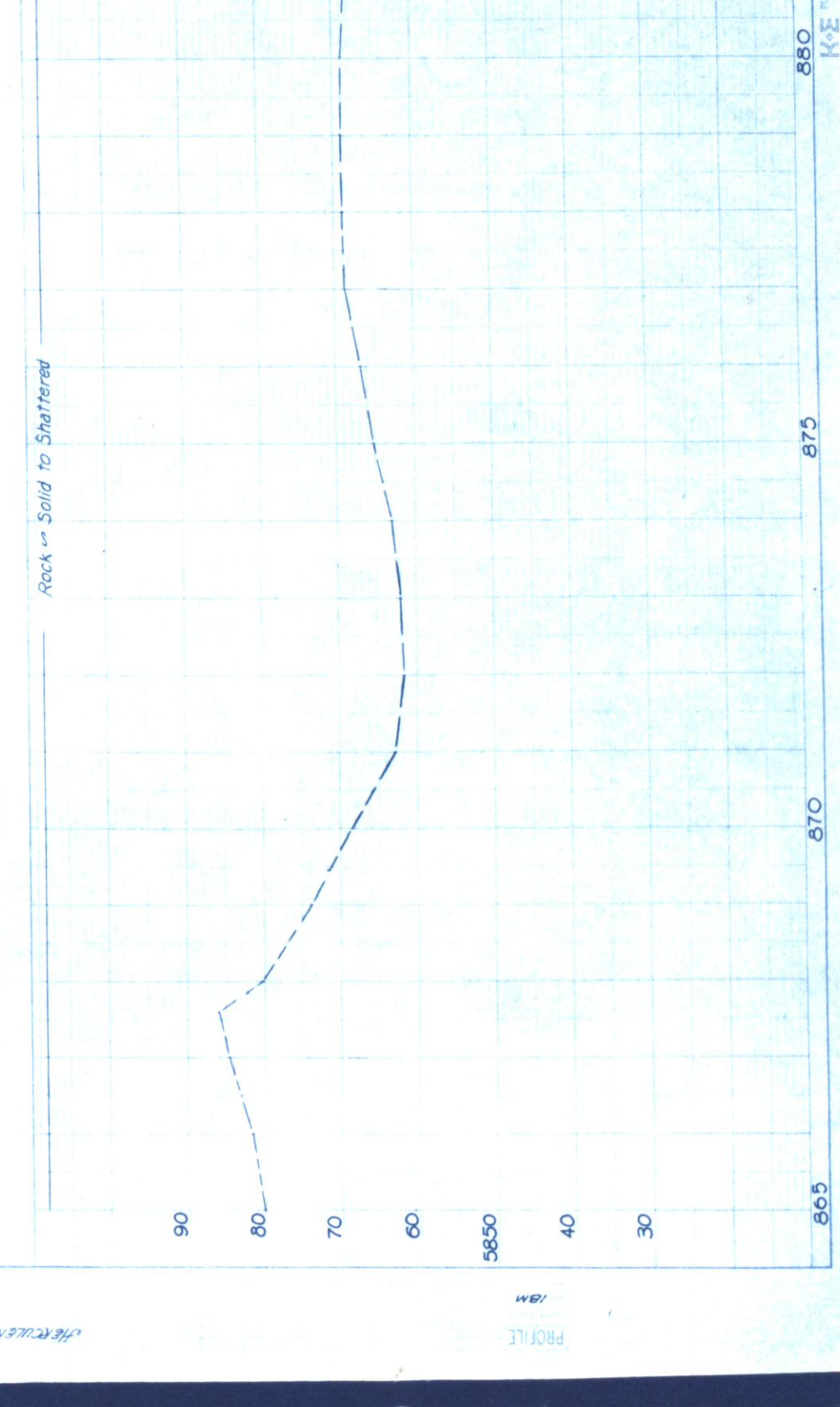
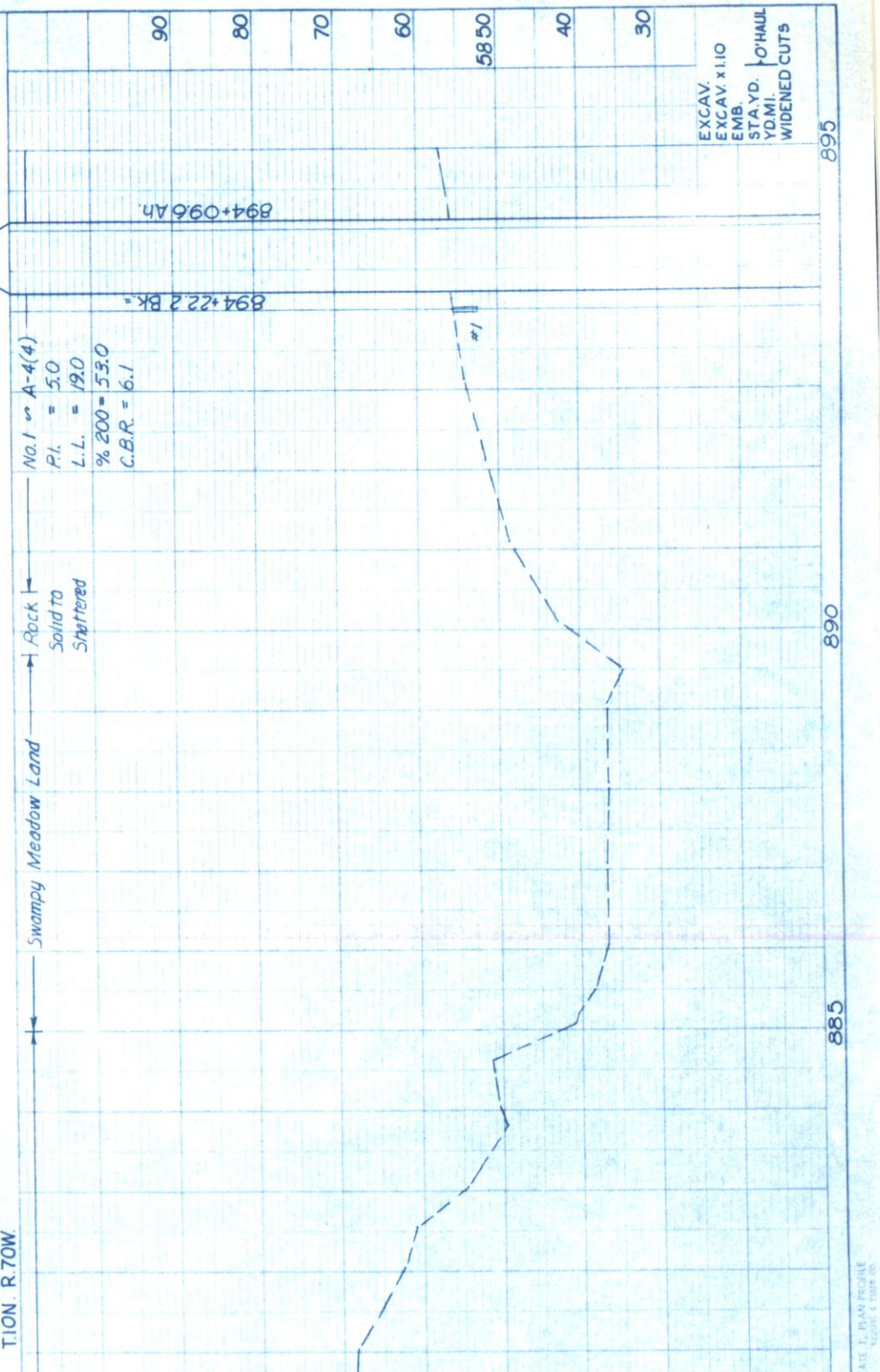




REVISIONS	REC	REC	REC
11-23-62	1 Rev	access op.'s	
2-4-62			

PROJECT NO. F004-1(31)  
 DIVISION 9  
 COLO. 9  
 Jct S.H. 200 & U.S. 287-  
 N-S

**RIGHT OF WAY**  
 17°09'45" LT.  
 Δ = 1°00'  
 DT = 864.6'  
 LR = 1716.3'  
 L = 5730.0'  
 RE = 64.9'  
 S = 0.028/FT.  
 TL = 200'  
 MDS = 70MPH  
 SSD



EXCAV. x110  
 EMB. STA. YD.  
 YD. MI.  
 O'HAUL  
 WIDENED CUTS

GEORGE F. ROBERTS &  
 MARTHA A. ROBERTS  
 REV. LIVERMORE, COLO.

Sec. 28  
 TION. R. 70W.

865 870 875 880 885 890 895

90 80 70 60 5850 40 30

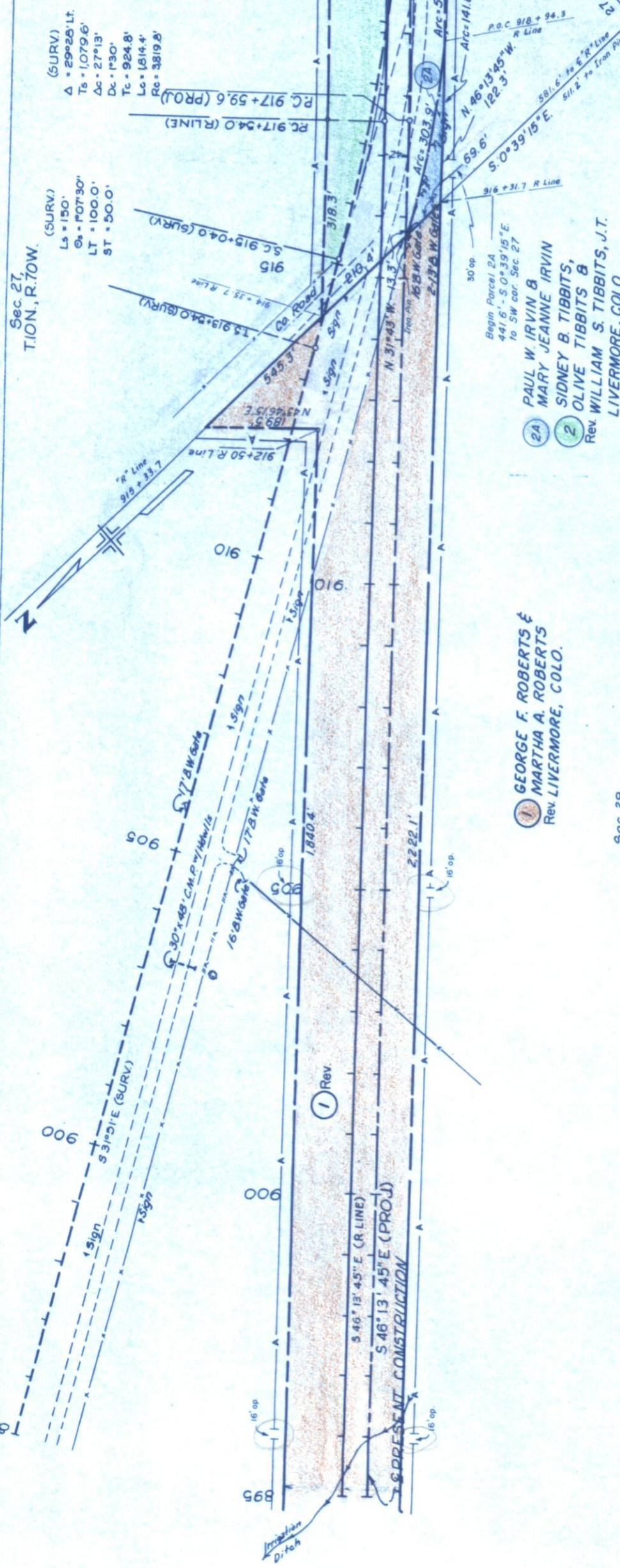
865 870 875 880 885 890 895

90 80 70 60 5850 40 30

FED. ROAD DIST. NO.	DIVISION	PROJ. NO.	SHEET NO.	TOTAL SHEETS
8	COLO.	FCC-1-31	5	

**RIGHT OF WAY**  
Jct. SH. 200 & U.S. 287 - N-S

(R LINE & PROJ.)  
 $\Delta = 15^\circ 05' 45''$  LT.  
 $\Delta D = 0^\circ 36'$   
 $\Delta T = 1,265.3'$   
 $\Delta L = 2516.0'$   
 $\Delta R = 9,550.0'$   
 $\Delta S = 835'$   
 $\Delta TL = 0.02$  Y/FT  
 $\Delta MDS = 200'$   
 $\Delta SSD = 70$  MPH.

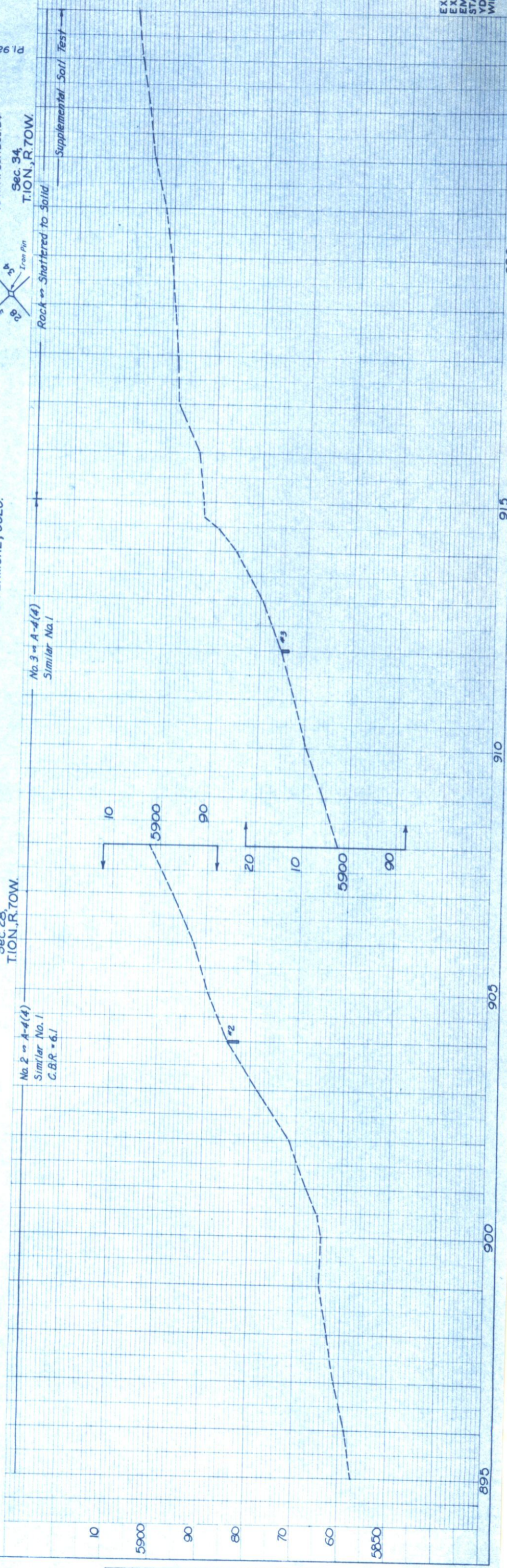


1 GEORGE F. ROBERTS & MARTHA A. ROBERTS  
 Rev. LIVERMORE, COLO.

2A PAUL W. IRVIN & MARY JEANNE IRVIN  
 2 SIDNEY B. TIBBITS, OLIVE TIBBITS & WILLIAM S. TIBBITS, J.T.  
 Rev. LIVERMORE, COLO.

Sec. 28, TION, R. TOW.

Sec. 34, TION, R. TOW.



EXCAV. X  
 EMB.  
 STAYED  
 YD. MI.  
 O'HAUL  
 WIDENED CUTS

DATE	BY	CHKD.	APP'D.

PLAN

DATE	BY	CHKD.	APP'D.

PROFILE

**RIGHT OF WAY**  
 (SURV.)  
 $\Delta = 27^{\circ}14' LT$   
 $T_s = 561.0'$   
 $E_s = 45.7'$   
 $\Delta c = 15^{\circ}16'$   
 $D_c = 9^{\circ}00'$   
 $T_c = 256.0'$   
 $L_c = 607.6'$   
 $E_c = 171'$   
 $R_c = 1910.0'$

**PROJ. & PROJ. A**  
 $\Delta = 24^{\circ}16' LT$   
 $T_s = 561.0'$   
 $E_s = 45.7'$   
 $\Delta c = 15^{\circ}16'$   
 $D_c = 9^{\circ}00'$   
 $T_c = 256.0'$   
 $L_c = 607.6'$   
 $E_c = 171'$   
 $R_c = 1910.0'$

**(PROJ.)**  
 $L_s = 729.8'$   
 $G_s = 4^{\circ}30'$   
 $LI = 439.0'$   
 $ST = 291.3'$

**(SURV, PROJ. A)**  
 $L_s = 300'$   
 $G_s = 4^{\circ}30'$   
 $LI = 200.1'$   
 $ST = 100.1'$

**PAUL NAUTA & DOROTHY NAUTA, J.T.**  
 Rev. LIVERMORE, COLO.

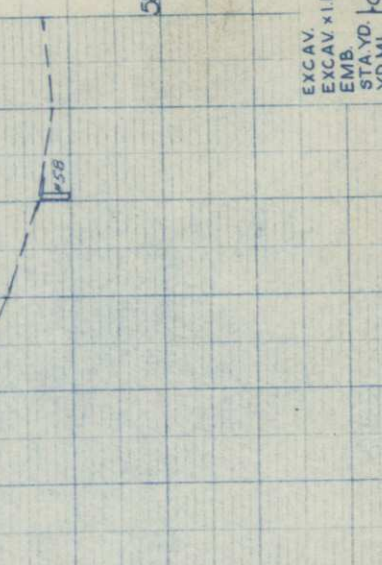
**ED NAUTA & SARAH NAUTA, J.T.**  
 LIVERMORE, COLO.

**LIVERMORE COMMUNITY CHURCH**  
**WILLIAM J. FREDERICK & DOROTHY LUCILLE FREDERICK, J.T.**  
 LIVERMORE, COLO.

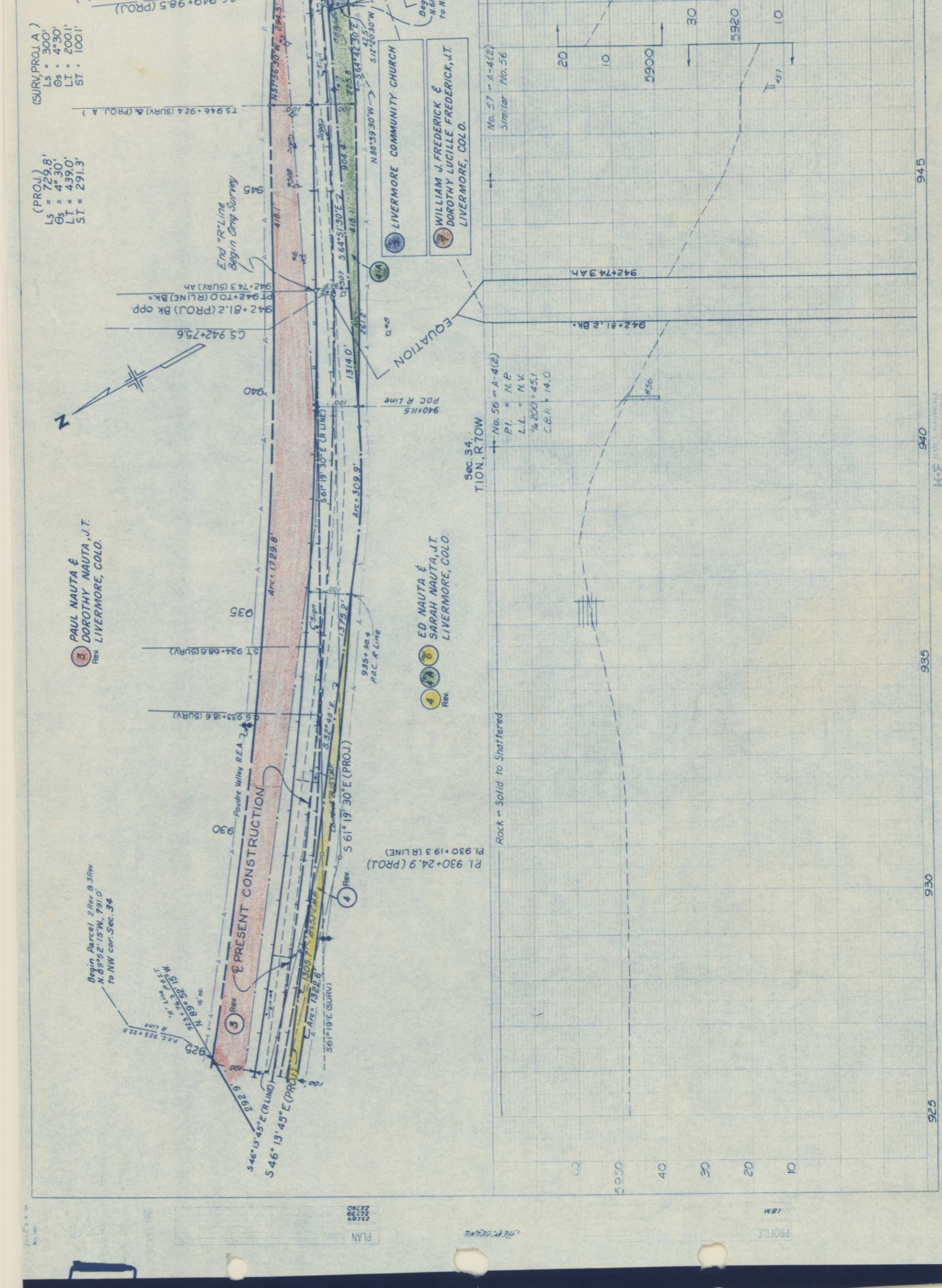
**REVISIONS**

REC	11-23-62	3 Rev.	4 Rev.
REC	12-4-62	20 op.	
REC	12-18-62	add TE, move 20 op.	
REC	1-10-63	4 Rev.	5 Rev.
REC		6 Rev.	7 Rev.

**NOTE:**  
 Temporary Easements Req'd. For Road Approachs To Parcels 5, 6 & 7.



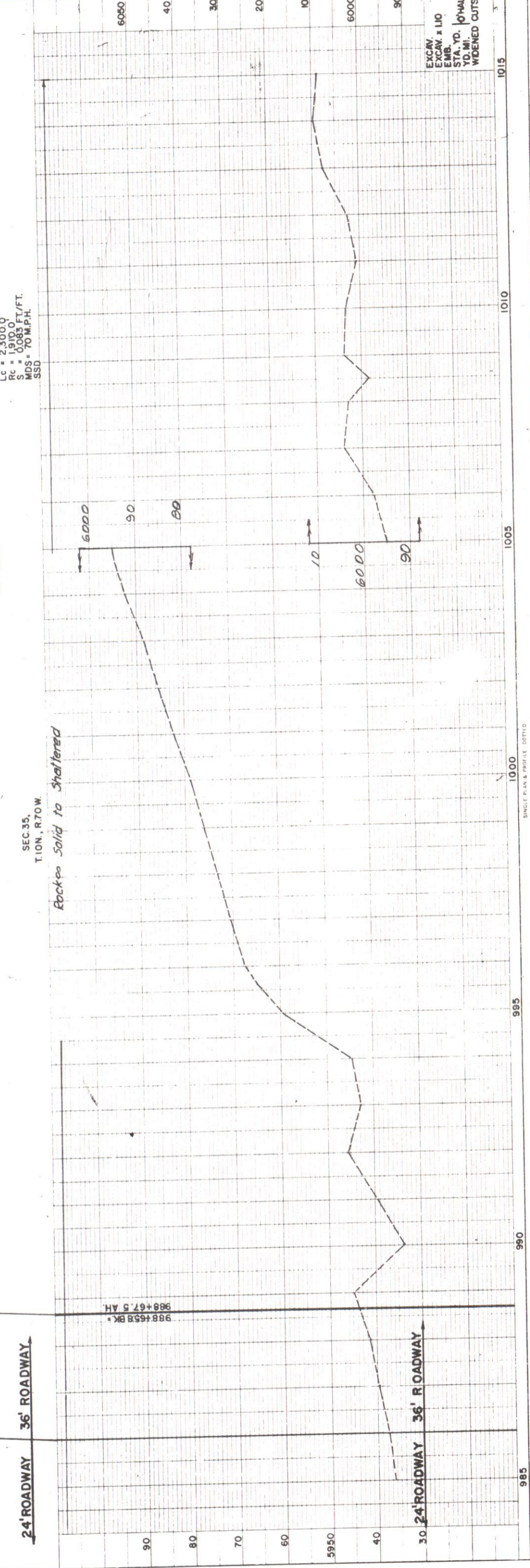
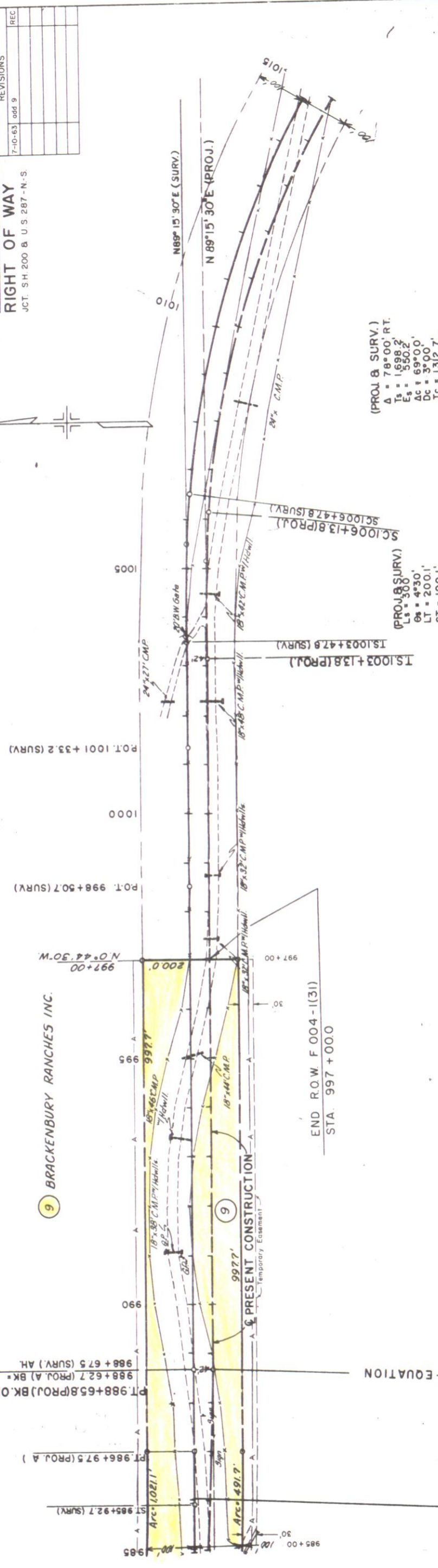
**PLAN**





COLORADO DEPARTMENT OF HIGHWAYS  
FORM E. B. H. 134  
FAR 1960

FED. ROAD DIST. NO.	9	DIVISION	COLO.	PROJ. NO.	F 004-1(31)	SHEET NO.	8	TOTAL SHEETS	
RIGHT OF WAY						REVISIONS			
JCT. SH. 200 & U.S. 287-N.S.						7-10-63 000 9			



PLAN	NO. 2278	DATE	7-10-63
DESIGNED BY	DR. J. W. CHELSEA	CHECKED BY	
APPROVED BY		DATE	

PROFILE	NO. 75M	DATE	
STRUCTURE MATERIALS CHECKED		DATE	

REVISIONS		FED. ROAD REG. NO.		DIVISION		PROJ. NO.		SHEET NO.		TOTAL SHEETS	
11-23-62	1 Rev. 2 Rev. 2 Rev. 3 Rev. 4 Rev.	9	9	9	9	9	9	9	9	9	9
12-1-62	2A name change										
1-10-63	4A Rev. 5 Rev. 6 Rev. 7 Rev.										
7-10-63	000 9										

RIGHT OF WAY OWNERSHIP MAP  
Orig Scale 1" = 400'

Jct. SH 200, E US 287-NES  
NE 1/4 SEC. 34

