

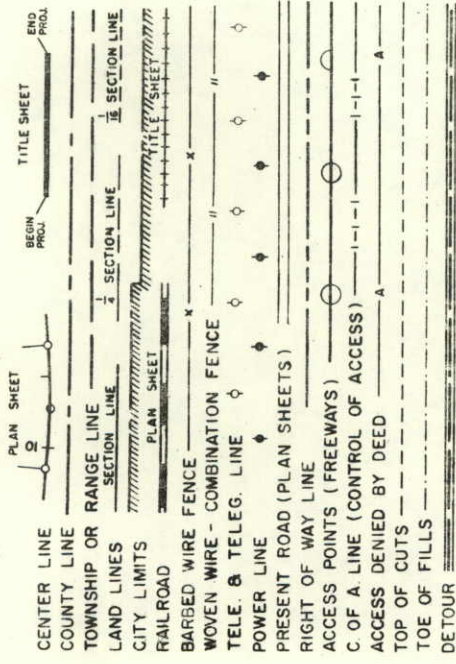
DEPARTMENT OF HIGHWAYS STATE OF COLORADO

RIGHT OF WAY PLAN OF PROPOSED
FEDERAL AID PROJECT NO. F004-1(39)
STATE HIGHWAY NO. 123
LARIMER COUNTY
RIGHT OF WAY

INFORMATION OBTAINED FROM AVAILABLE COUNTY RECORDS

SCALE OF ORIGINAL DRAWING
ON PLAN, 1" = 100'
LENGTH OF PROJECT = 1.631 MILES (ROW) = 8611.6 FEET

CONVENTIONAL SIGNS



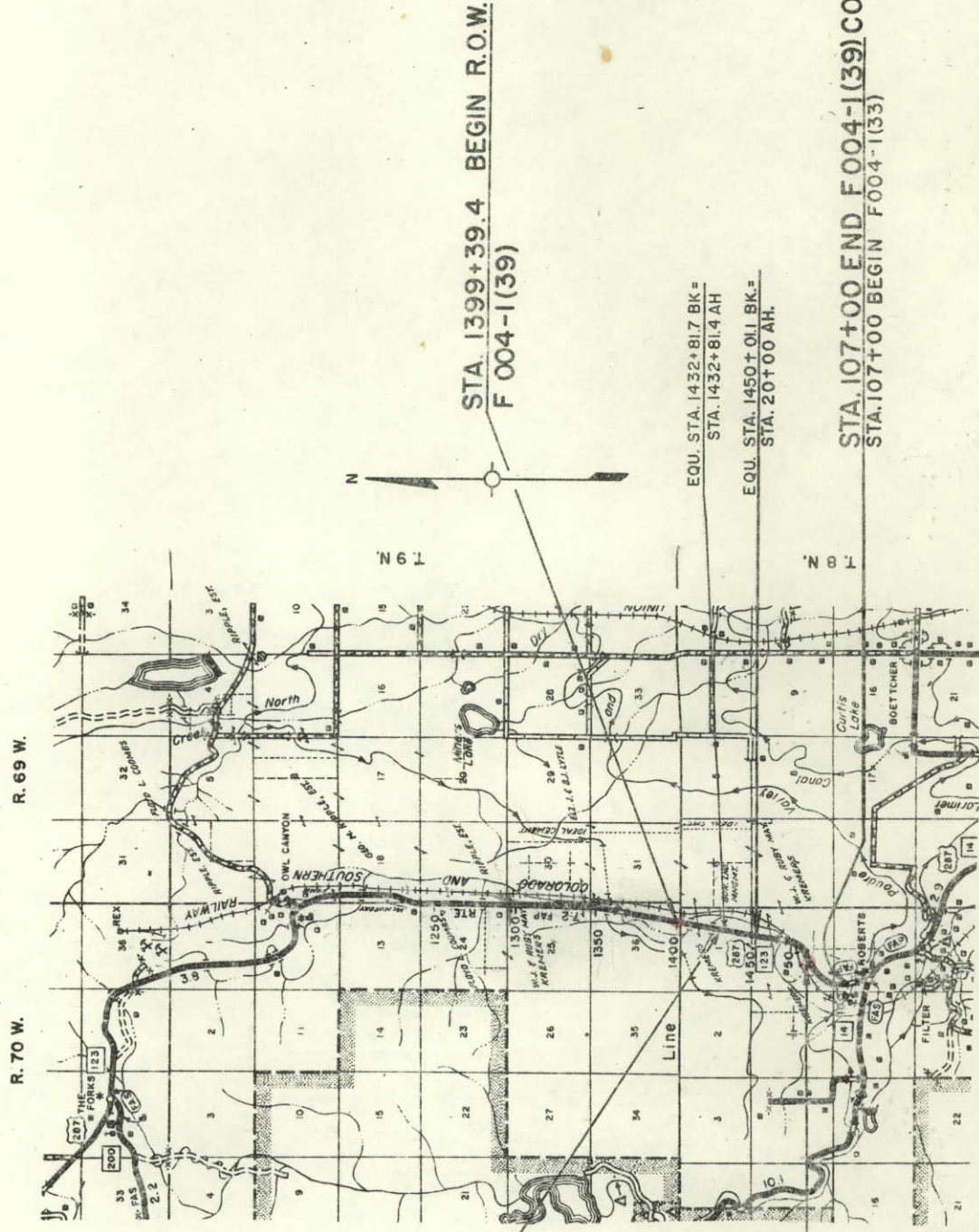
SHEET NO.
1
2
3-7

TITLE SHEET
TABULATION OF PROPERTIES
PLAN & OWNERSHIP MAPS

FEDERAL ROAD REGION NO.	DIVISION	PROJECT NO.	SHEET NO.
9	COLORADO	F004-1(39)	1

RIGHT OF WAY
TEDS PLACE TO THE FORKS
INDEX OF SHEETS

REVISIONS	
1-4-66	Change Bag & Error Row Stations D/J



STA. 1432+78.8 (Proj.) BEGIN CONST. F 004-1(39)
20 Ft. Rt. 1432+82.5 (Surv.) =
Approx. 62' Rt. 581+27 ± on F.A.P. 144-F

STA. 52+27.0 END R.O.W. F 004-1(39) =
BEGIN R.O.W. F 004-1(33)

STA. 107+00 END F004-1(39) CONST.
STA. 107+00 BEGIN F004-1(33)

STA. 52+27.0 END R.O.W. F 004-1(39) =
BEGIN R.O.W. F 004-1(33)

LEGEND
 --- TOP OF CUTS
 --- TOE OF FILLS

REVISIONS

1-4-55	Change End R.O.W. Station	DJF
1-21-56	Add access	GM
4-22-56	Add P.O.C.	DJF

FED. ROAD DIST. NO. 9

PROJECT NO. F004-1(39)

SHLET NO. 6

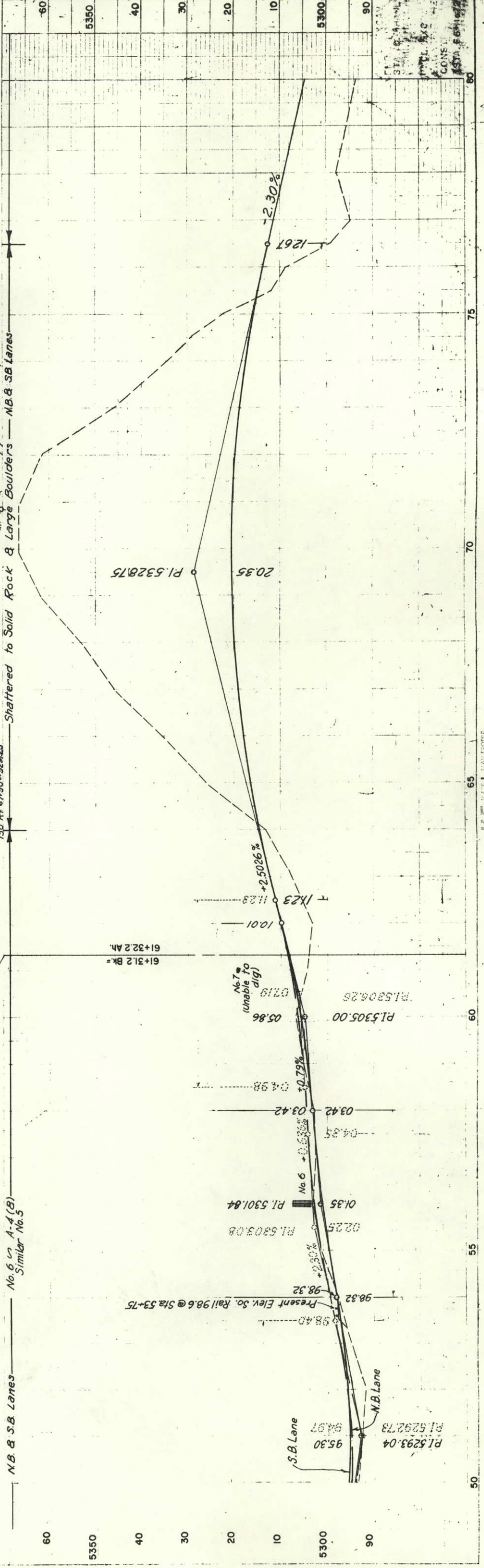
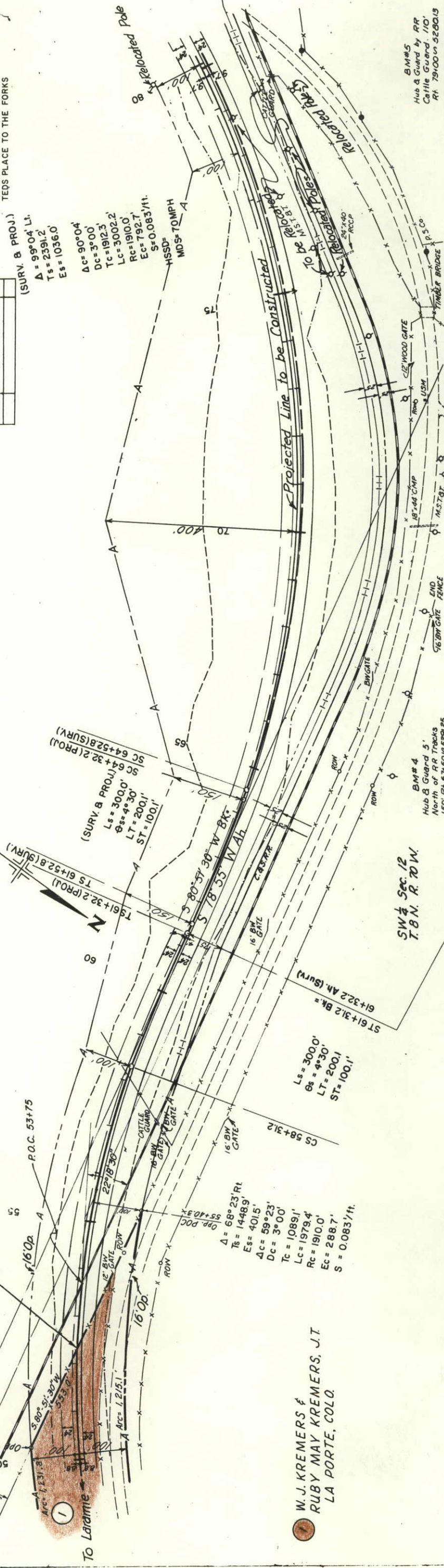
RIGHT OF WAY
 TEDS PLACE TO THE FORKS

(SURV. & PROJ.)
 $\Delta = 99^{\circ}04' L$
 $Ts = 2391.2$
 $Es = 1036.0$
 $\Delta c = 90^{\circ}04'$
 $Dc = 3^{\circ}00'$
 $Tc = 1912.3$
 $Lc = 3002.2$
 $Rc = 1910.0$
 $Ec = 792.7$
 $S = 0.083/ft.$

(SURV. & PROJ.)
 $Ls = 300.0'$
 $\theta = 4^{\circ}30'$
 $LT = 200.1'$
 $ST = 100.1'$
 SC 64+32.2 (PROJ.)
 SC 64+52.8 (SURV.)

$\Delta = 68^{\circ}23' Rt$
 $Ts = 1448.9'$
 $Es = 401.5'$
 $\Delta c = 59^{\circ}23'$
 $Dc = 3^{\circ}00'$
 $Tc = 1089.1'$
 $Lc = 1979.4'$
 $Rc = 1910.0'$
 $Ec = 288.7'$
 $S = 0.083/ft.$

W. J. KREMERS &
 RUBY MAY KREMERS, J.T.
 LA PORTE, COLO.



PROFILE
 Comp

PLAN

SCALE 1" = 40'

