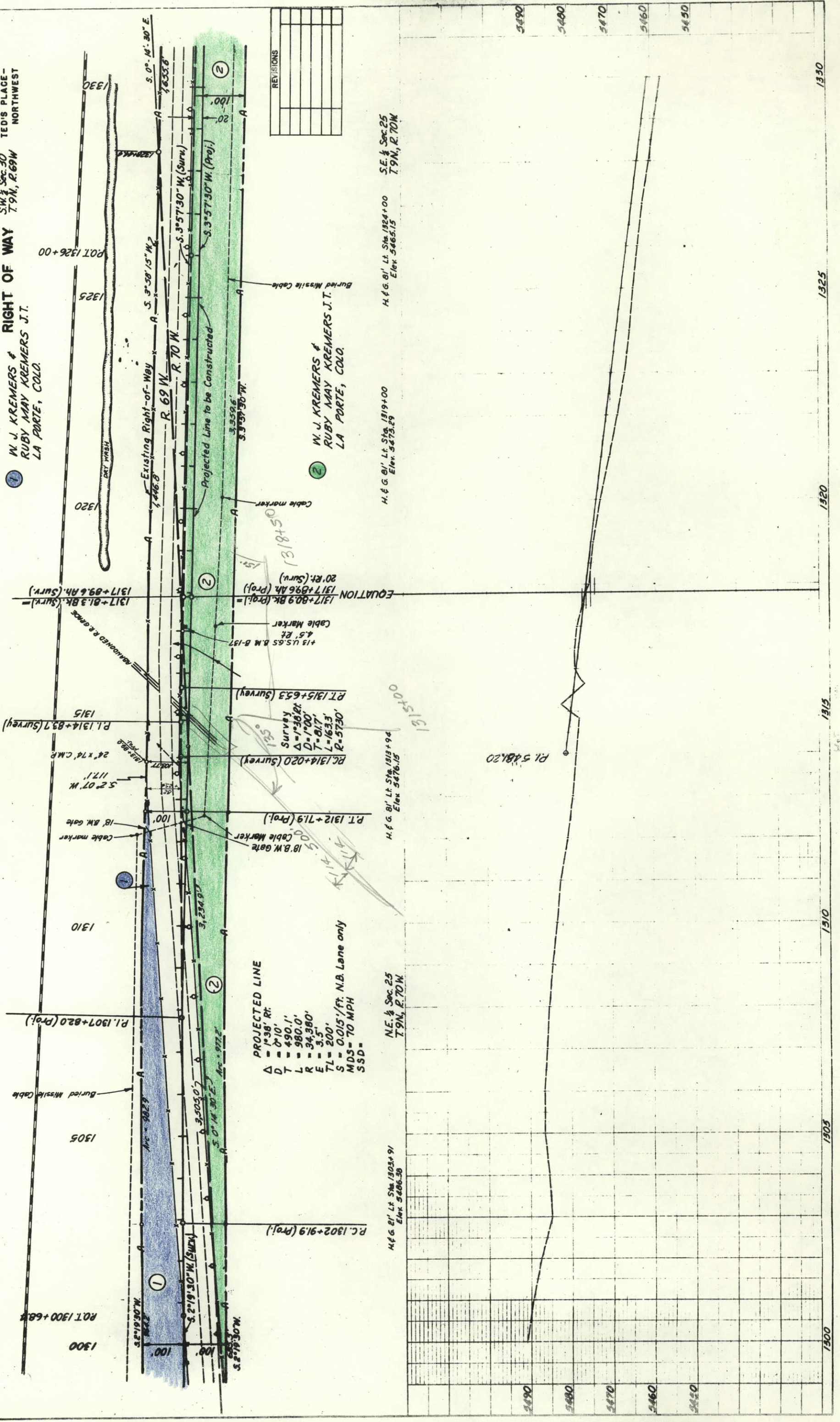


W. J. KREMERS & RUBY MAY KREMERS J.T.
 LA PORTE, COLO.
 S.W. 1/4 Sec. 30 T. 9N., R. 69W.
 TED'S PLACE - NORTHWEST



N.W. 1/4 Sec. 30 T. 9N., R. 69W.

NO.	DATE	DESCRIPTION
1		AS SHOWN
2		REVISED
3		REVISED
4		REVISED
5		REVISED
6		REVISED
7		REVISED
8		REVISED
9		REVISED
10		REVISED



PROJECTED LINE
 Δ = 1°38' Rt.
 D = 490.1'
 L = 980.0'
 R = 34,380'
 E = 3.5'
 TL = 200'
 S = 0.015'/ft. N.B. Lane only
 MDS = 70 MPH
 SSD =

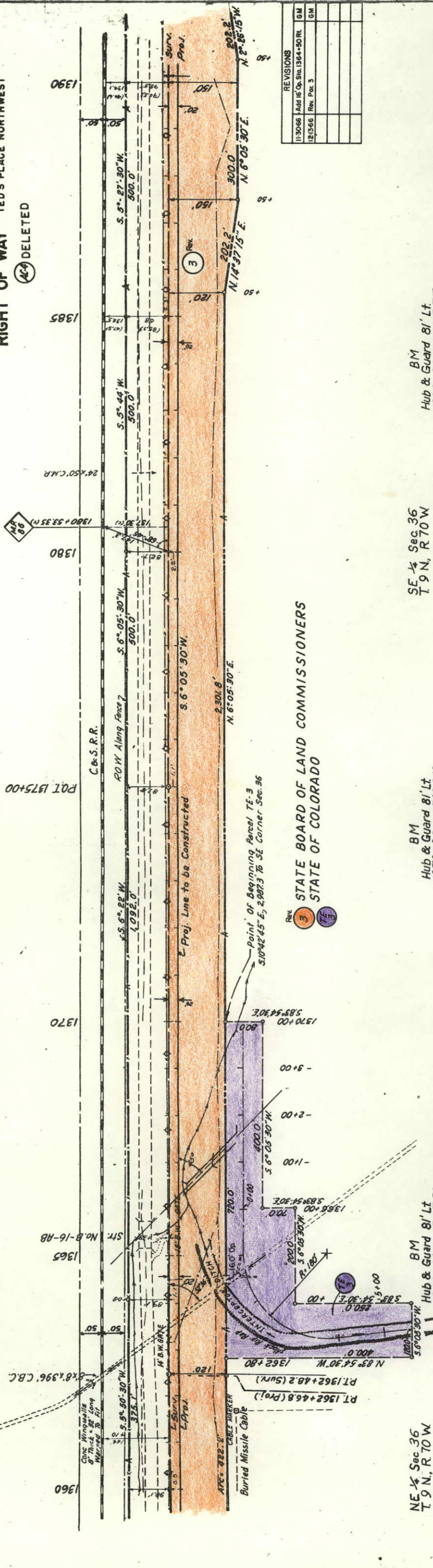
H. & G. Bl' Lt. Sta. 1303+91 Elev. 5486.58
 H. & G. Bl' Lt. Sta. 1313+94 Elev. 5476.15
 H. & G. Bl' Lt. Sta. 1319+00 Elev. 5473.29
 H. & G. Bl' Lt. Sta. 1324+00 Elev. 5465.15
 S.E. 1/4 Sec. 25 T. 9N., R. 70W.

NO.	DATE	DESCRIPTION
1		AS SHOWN
2		REVISED
3		REVISED
4		REVISED
5		REVISED
6		REVISED
7		REVISED
8		REVISED
9		REVISED
10		REVISED

1300 1305 1310 1315 1320 1325 1330
 5450 5460 5470 5480 5490

FED. ROAD REC. NO.	PROJECT NO.	SHEET NO.
9	FO04-1(43)	6

RIGHT OF WAY TED'S PLACE NORTHWEST
 (A-4) DELETED



PLAN
 44229
 44230
 44231

REVISIONS	
11-30-66	Add 16' On Sta. 1364+50 RL. GM
12-13-66	Rev. Post. 3 GM



U.S.B.R. 1952 - Tunnel Extends 2+ Miles

PAT 1375+00

STR. No. 8-16-AB

8' x 8' x 3.96' C.B.C.

APC 782-2

Cable Marker

Buried Missile Cable

PT. 1362+46.8 (Proj.)

PT. 1362+48.2 (Sun.)

1362+80

N. 83° 54' 30" W

1362+80

400.0'

S. 6° 05' 30" E

583.54+30E

1364+00

583.54+30E

720.0'

S. 6° 05' 30" W

400.0'

1370+00

583.54+30E

1370+00

583.54+30E

1370+00

583.54+30E

1370+00

583.54+30E

1370+00

583.54+30E

1370+00

583.54+30E

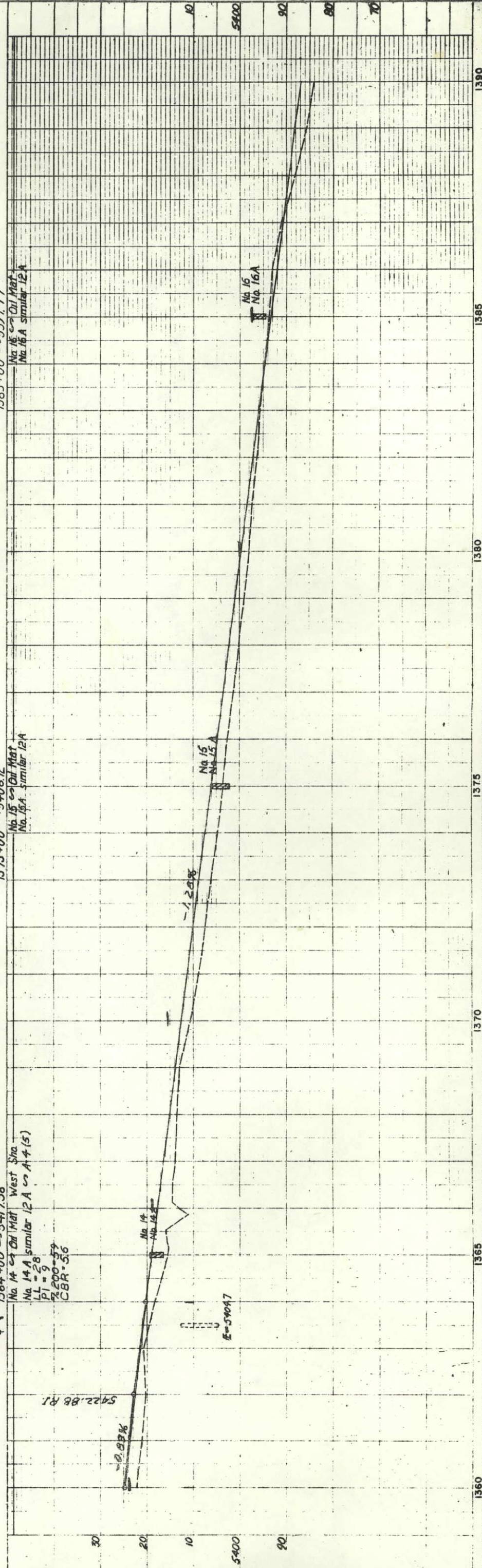
NE 1/4 Sec 36
 T. 9 N., R. 70 W

BM
 Hub & Guard 8' Lt
 1364+00 - 5417.38

BM
 Hub & Guard 8' Lt
 1373+00 - 5406.12

SE 1/4 Sec 36
 T. 9 N., R. 70 W

BM
 Hub & Guard 8' Lt
 1383+00 - 5397.77



BM
 Hub & Guard 8' Lt
 1364+00 - 5417.38

BM
 Hub & Guard 8' Lt
 1373+00 - 5406.12

BM
 Hub & Guard 8' Lt
 1383+00 - 5397.77

No. 14 on Old Mat West Sta
 No. 14 A similar 12 A to A 4 (5)
 PI = 28
 PL = 5
 E = 200-59
 CBR = 36

No. 15 on Old Mat
 No. 15 A similar 12 A

No. 16 on Old Mat
 No. 16 A similar 12 A

30

20

10

5400

90

90

80

70

E = 54047

-1.20%

No. 15
 No. 15 A

No. 16
 No. 16 A

1360

1365

1370

1375

1380

1385

1390

FED. ROAD REG. NO.	DIVISION	PROJ. NO.	SHEET NO.	TOTAL SHEETS
9	COLO.	FOO 4-1(43)	8	8

REVISIONS	
11-30-66	Add two 16' Ops. Stns. 1357+46 & 1364+50
12-13-66	Rev. Par. 3
	GM
	GH

RIGHT OF WAY
 Property Ownership Map
 Original Scale 1"=400'

T. 9 N., R. 69 W.

EDGAR M. RIPPLE,
 WALTER L. RIPPLE &
 FLORENCE KRIEGER
 RT. 3, BOX 655
 FT. COLLINS, COLO.
 All Sec. 19 With Other Lands.
 Subject To 100' R.R. R.O.W.,
 U.S.A. Cable Esmt.

NW 1/4 Sec. 19
 SW 1/4 Sec. 19

FLOYD L. COOMBS
 LA PORTE, COLO.
 NE 1/4, NW 1/4, SW 1/4 Sec. 24.
 Except, R.R. Parcel (374-360).
 Subject To: M.S.T. & T. R.O.W., R.O.W. To Larimer County.

W.J. KREMERS &
 RUBY MAY KREMERS, J.T.
 LA PORTE, COLO.
 SW 1/4 SE 1/4 & SE 1/4 SW 1/4 Sec. 24,
 With Other Lands.
 Subject To: Hwy R.O.W. To
 Larimer County, M.S.T. & T.
 R.O.W., R.R. R.O.W.

W.J. KREMERS &
 RUBY MAY KREMERS, J.T.
 LA PORTE, COLO.
 W 1/2, NW 1/4, NE 1/4 NW 1/4, W 1/2 Sec. 30
 With Other Lands.
 Subject To R.R. R.O.W., County Road R.O.W.,
 U.S.A. Cable Esmt.

W.J. KREMERS &
 RUBY MAY KREMERS, J.T.
 LA PORTE, COLO.
 All Sec. 25 With Other Lands,
 Less 70 Ac. In W 1/2 NE 1/4.
 Subject To: M.S.T. & T. R.O.W.,
 R.O.W. To Larimer Co.,
 U.S.A. Cable Esmt., Ditches
 & R.R. R.O.W.

W.J. KREMERS &
 RUBY MAY KREMERS, J.T.
 LA PORTE, COLO.
 (1243-464)
 W.J. KREMERS &
 RUBY MAY KREMERS,
 JAMES KREMERS

STATE BOARD OF LAND COMMISSIONERS
 STATE OF COLORADO
 All Sec. 36

Subject To: Hwy R.O.W. To Larimer County;
 RDM For Ditch & Pipe Line To W.J. Kremers;
 Esmt. To U.S.A.; R.R. R.O.W.

DELETED

