

DEPARTMENT OF HIGHWAYS STATE OF COLORADO

PLAN AND PROFILE OF PROPOSED FEDERAL AID PROJECT NO. F 005-2(23) STATE HIGHWAY NO. 2 GRAND COUNTY RIGHT OF WAY

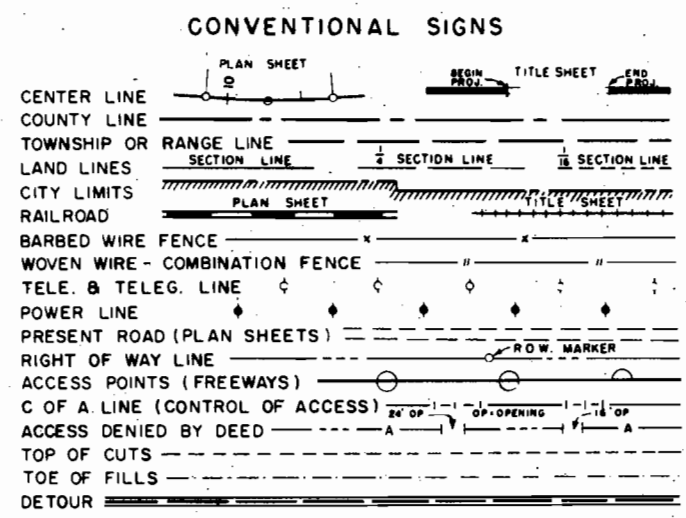
SHEET NO 1
2
3

FEDERAL ROAD REGION NO.	DIVISION	PROJECT NO.	SHEET NO.
9	COLORADO	F 005-2(23)	1

RIGHT OF WAY 7 MILES NORTH OF JCT. SH. 2 & SH. 64

INDEX OF SHEETS
TITLE SHEET
TABULATION OF PROPERTIES
PLAN SHEET

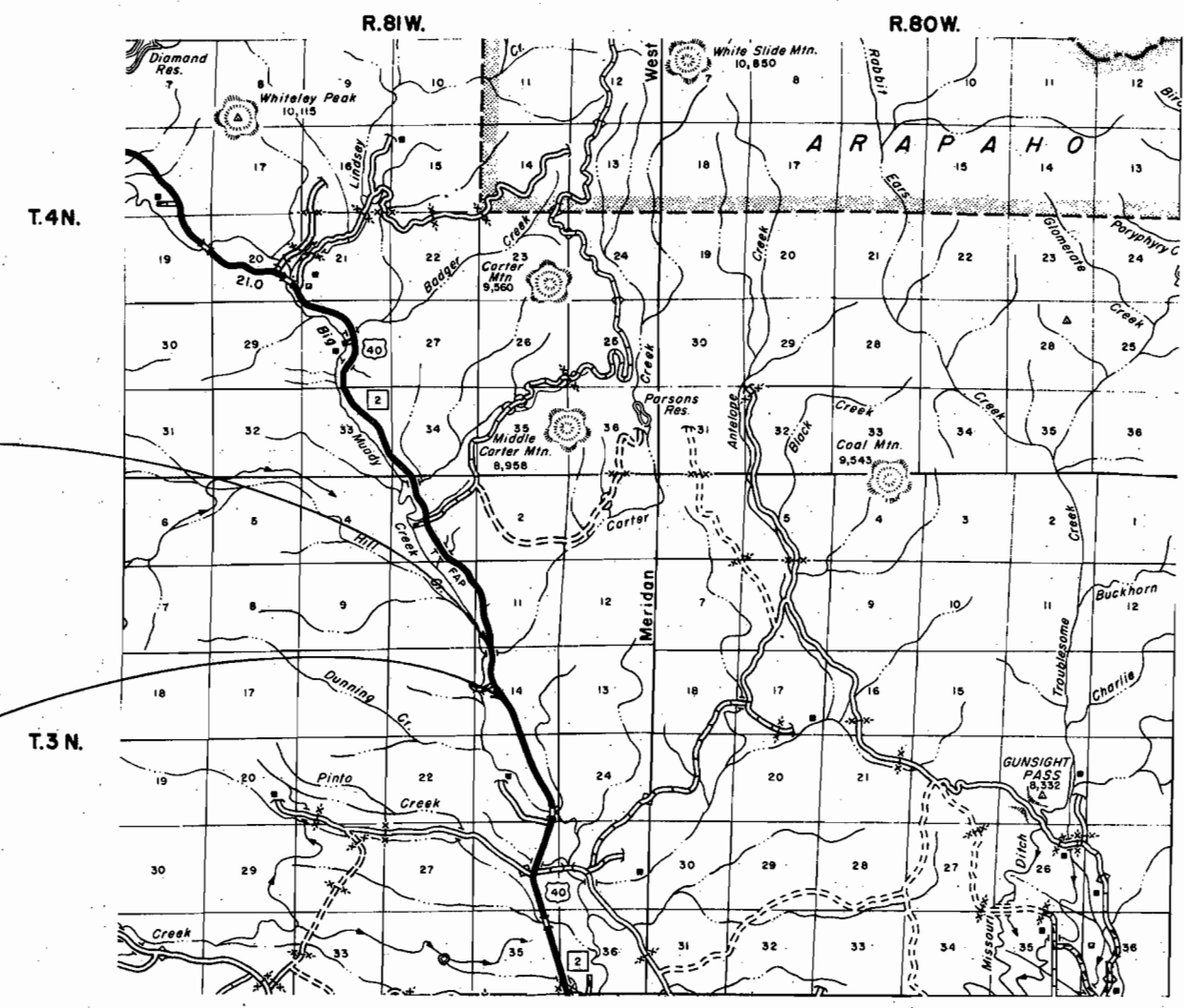
REVISIONS		
5-7-68	Add Right of Way	D.J.F.



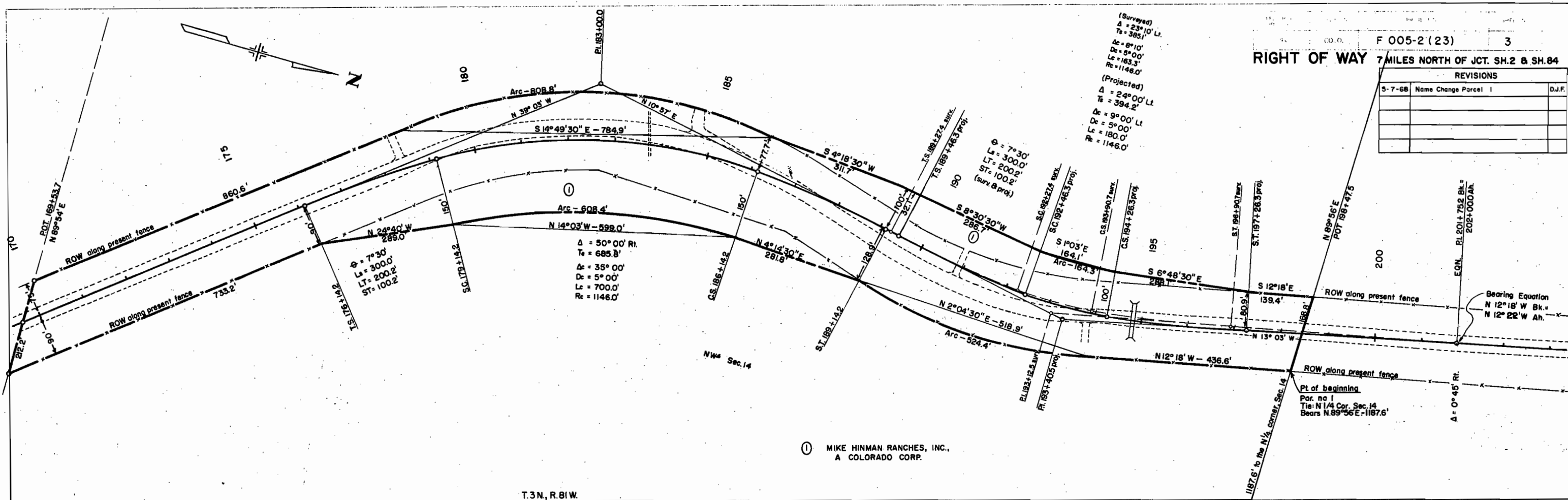
SCALES OF ORIGINAL DRAWINGS
ON PLAN, 1 IN. = 100 FT.
ON PROFILE, 1 IN. = 100 FT. HORIZONTAL
1 IN. = 10 FT. VERTICAL
GRADE LINE ON PROFILE IS SHOWN AS GRADE OF FINISHED ROAD
GROSS LENGTH OF PROJECT = 0.548 miles
NET LENGTH OF PROJECT = 0.548 miles

End ROW F 005-2(23)
POT 198+475
Opposite POT 198+72.3 on Proj 138 A (3)

Begin ROW F 005-2(23)
POT 169+53.7
Opposite POT 169+53.7 on Proj. 138 A (3)



REVISIONS		
5-7-68	Name Change Parcel 1	D.J.F.



① MIKE HINMAN RANCHES, INC.,
A COLORADO CORP.

T.3N., R.81W.

