

# COLORADO DEPARTMENT OF HIGHWAYS

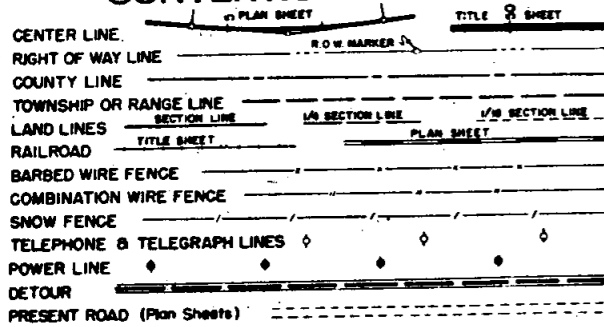
## PLAN AND PROFILE OF PROPOSED FEDERAL AID PROJECT NO. F 005-5(8) STATE HIGHWAY NO. 4 (24) KIT CARSON COUNTY RIGHT OF WAY

INDEX OF SHEETS

Sheet No.

- 1 Title Sheet
- 2 Tabulation of Properties
- 3 Alignment Plan and Profile Showing proposed R.O.W.

### CONVENTIONAL SIGNS

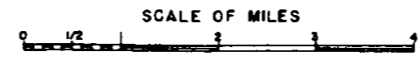
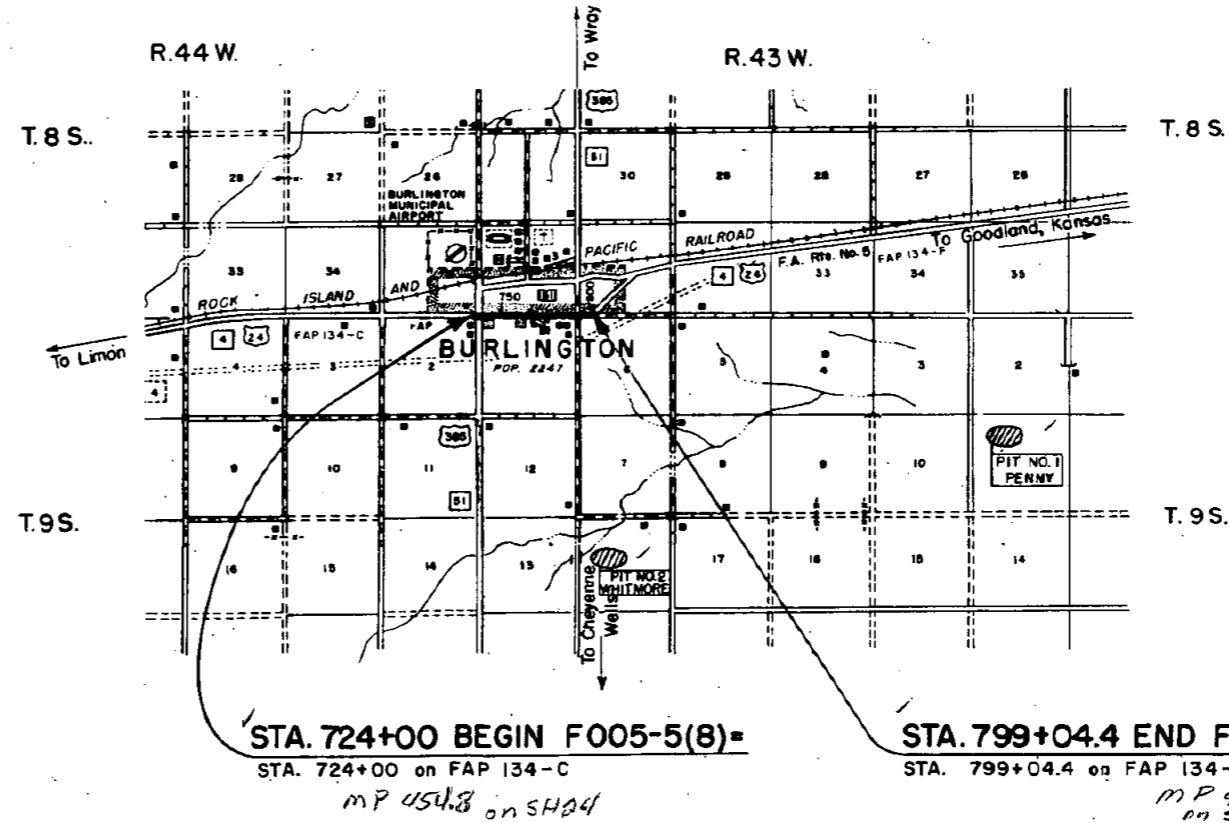


#### SCALES OF ORIGINAL DRAWINGS

ON PLAN 1 IN = 50 FT.  
ON PROFILE 1 IN = 50 FT. HORIZONTAL  
1 IN = 5 FT. VERTICAL

GRADE LINE ON PROFILE IS SHOWN AS GRADE OF FINISHED ROAD

GROSS LENGTH OF PROJECT } 7,507.9 LIN. FT. = 1.422 MI.  
NET LENGTH OF PROJECT }



*Beloit, Co*

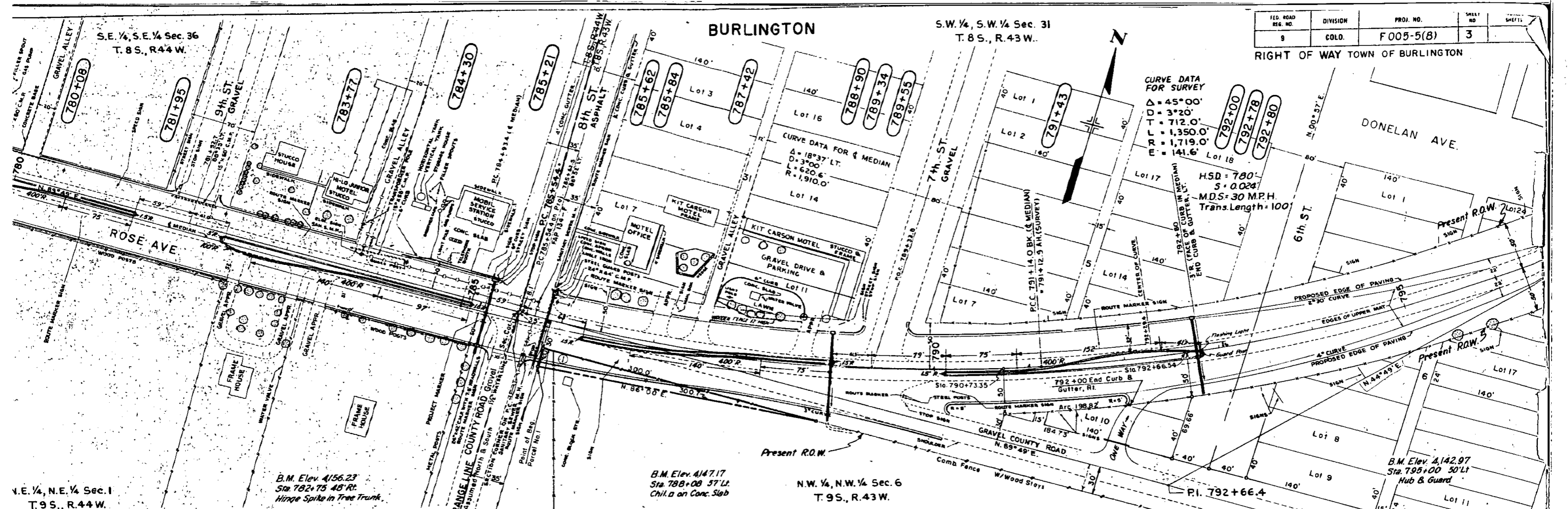


BURLINGTON

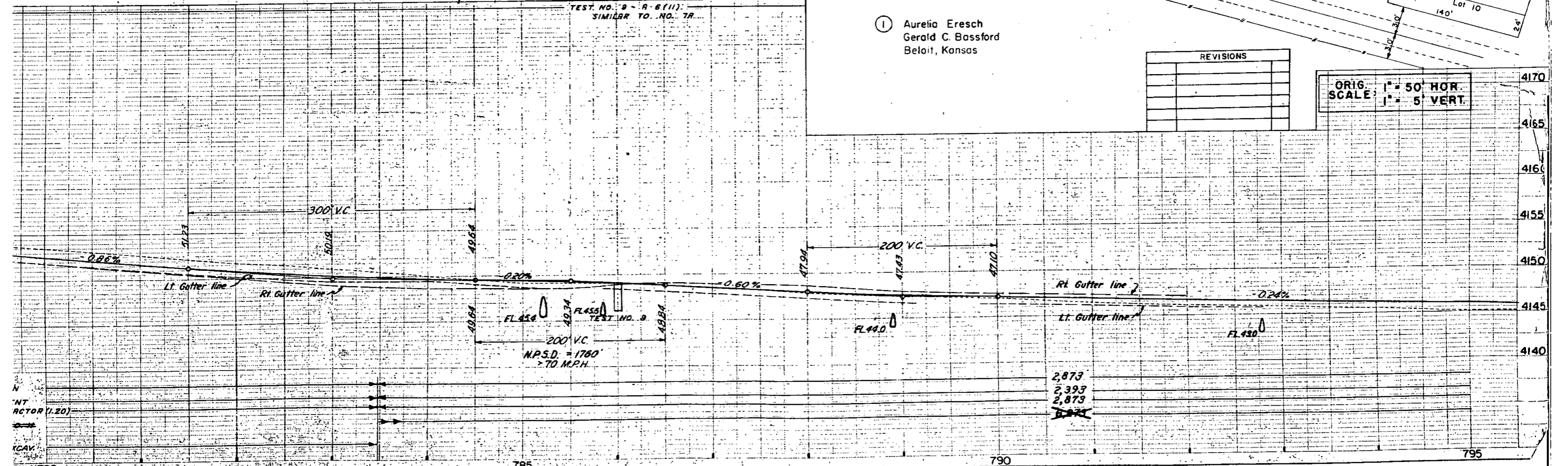
S.W. 1/4, S.W. 1/4 Sec. 31  
T.8S., R.43W.

FED. ROAD REG. NO.	DIVISION	PROJ. NO.	SHEET NO.	SHEETS
9	COLD.	F005-5(8)	3	

RIGHT OF WAY TOWN OF BURLINGTON



N.E. 1/4, N.E. 1/4 Sec. 1  
T.9S., R.44W.



① Aurelia Eresch  
Gerald C. Bassford  
Beloit, Kansas