

# DEPARTMENT OF HIGHWAYS STATE OF COLORADO

## PLAN AND PROFILE OF PROPOSED FEDERAL AID PROJECT NO. F 007-1(14) STATE HIGHWAY NO. 16 GRAND COUNTY

FEDERAL ROAD REGION NO.	DIVISION	PROJECT NO.	SHEET NO.
9	COLORADO	F 007-1(14)	1
<b>RIGHT OF WAY</b>			REVISIONS
GRANBY - NORTH			

**CONVENTIONAL SIGNS**

CENTER LINE	
COUNTY LINE	
TOWNSHIP OR RANGE LINE	
LAND LINES	
CITY LIMITS	
RAILROAD	
BARBED WIRE FENCE	
WOVEN WIRE - COMBINATION FENCE	
TELE. & TELEG. LINE	
POWER LINE	
PRESENT ROAD (PLAN SHEETS)	
RIGHT OF WAY LINE	
ACCESS POINTS (FREEWAYS)	
C OF A LINE (CONTROL OF ACCESS)	
ACCESS DENIED BY DEED	
TOP OF CUTS	
TOE OF FILLS	
DETOUR	

**INDEX OF SHEETS**

Sheet No. 1	Title Sheet
2	Tabulation of Properties
3-16	Plan Sheets
17-18	ROW Ownership Map

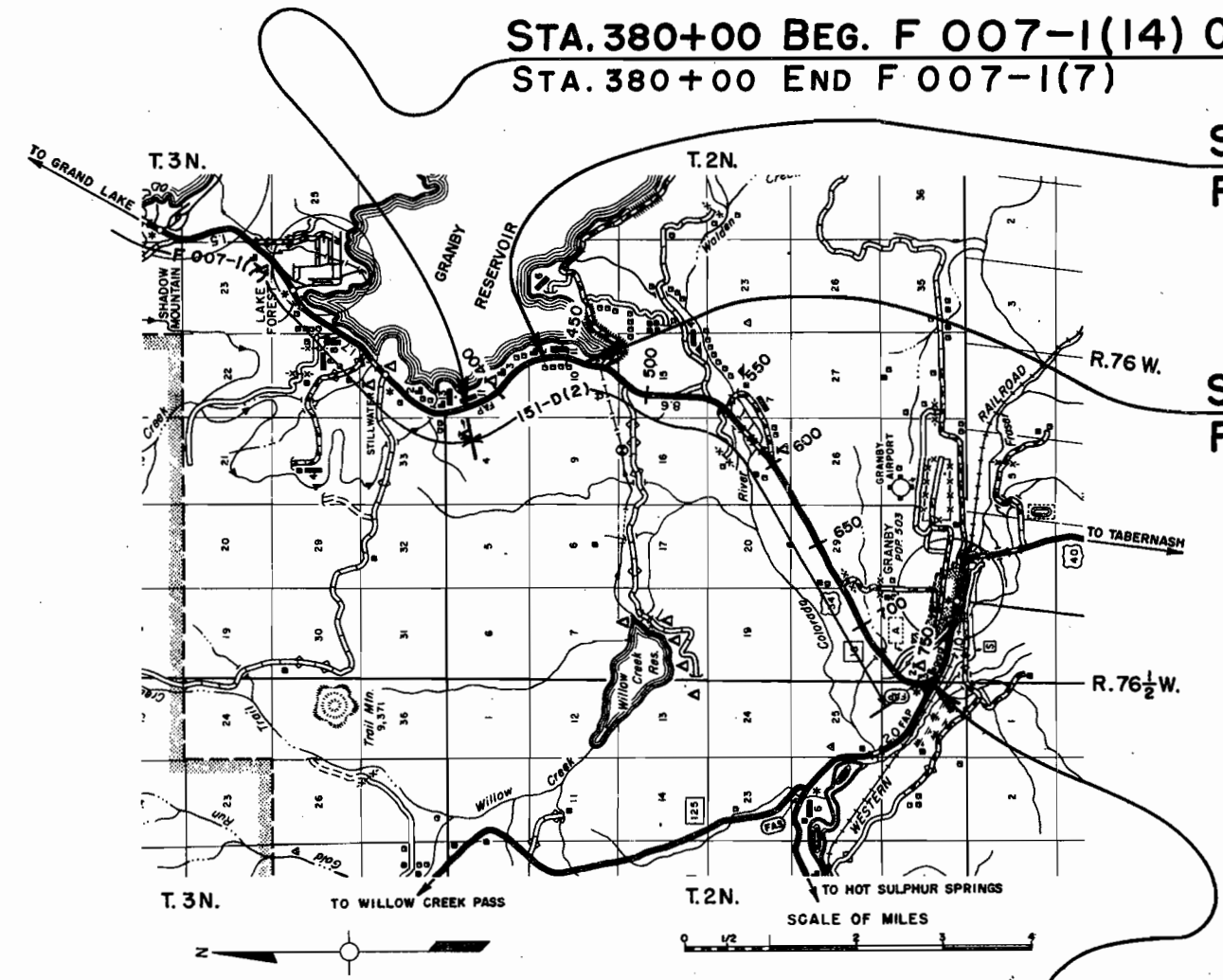
SCALES OF ORIGINAL DRAWINGS  
 ON PLAN, 1 IN. = 100 FT.  
 ON PROFILE, 1 IN. = 100 FT. HORIZONTAL  
 1 IN. = 10 FT. VERTICAL  
 GRADE LINE ON PROFILE IS SHOWN AS GRADE OF FINISHED ROAD  
 LENGTH OF PROJECT = 0.481 MILES (R.O.W.)

**RIGHT OF WAY**  
**STA. 380+00 BEG. F 007-1(14) CONST.=**  
**STA. 380+00 END F 007-1(7)**

**STA. 435+02.9 BEGIN R.O.W.**  
**F 007-1(14)** = FAP 194A -1  
 = FAP 194A (3)

**STA. 460+42.0 END R.O.W.**  
**F 007-1(14)**

**STA. 758+21.5 END F 007-1(14) CONST.=**  
**STA. 511+60.4 ON 151-D(2) LANDSCAPING**





ROW Mkr. 60' Lt. 361+10

S.W. 1/4 SEC. 34

REVISIONS	

ROW Mkr. 85' Lt. 384+19

ROW Mkr. 62' Lt. 385+06

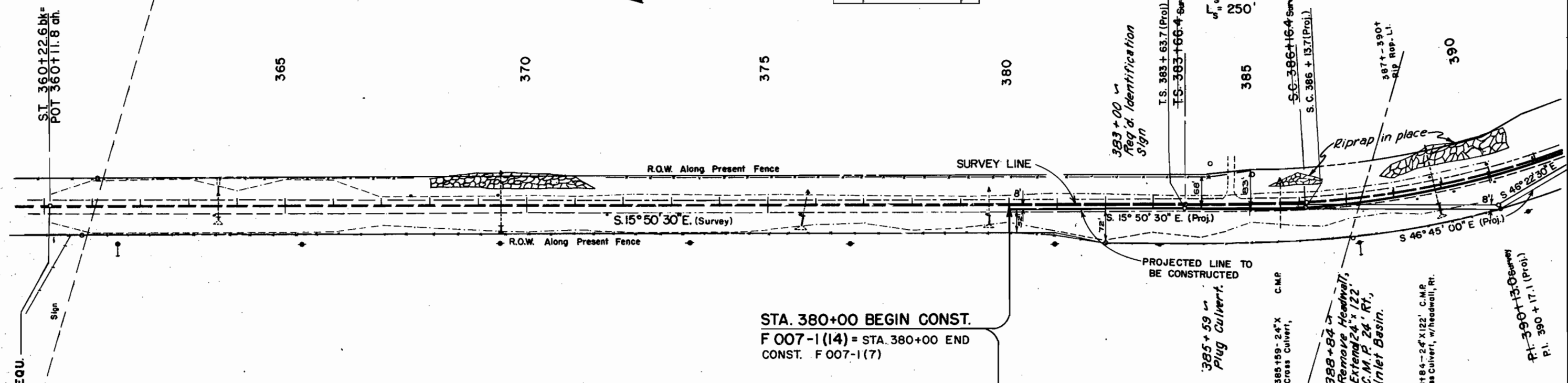
N.W. 1/4 SEC. 3, T. 2N., R. 76 W.

SURVEY 8 PROJ.

FED. ROAD ACR. NO.	DIVISION	PROJ. NO.	SHEET NO.	TOTAL SHEETS
9	COLO.	F 007-1(14)	3	18

3° 45' RIGHT OF WAY GRANBY - NORTH

Scale: 1" = 250'



STA. 380+00 BEGIN CONST.  
F 007-1 (14) = STA. 380+00 END  
CONST. F 007-1 (7)

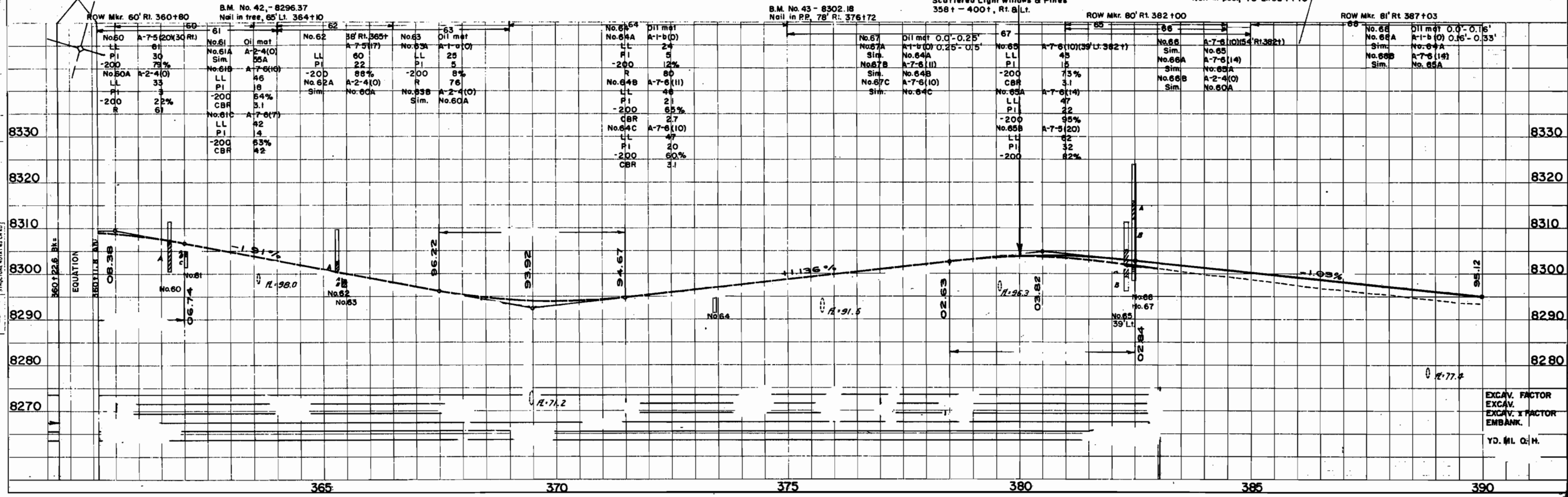
CLEARING & GRUBBING  
Scattered Light Willows & Pines  
358+ - 400+, Rt. B Lt.

B.M. No. 44 - 8293.64  
Nail in post, 70' Lt. 384+70

S.W. 1/4 SEC. 3

NOTED: PLOTTED GRADES CHECKED AT 1/2" SCALE

NOTED: PLOTTED GRADES CHECKED AT 1/2" SCALE



EXCAV. FACTOR	
EXCAV. FACTOR	
EXCAV. FACTOR	
EMBANK.	
YD. #L. Q. H.	



SE 4 SEC 3  
T 2 N R 76 W

NE 4 SEC 10  
T 2 N R 76 W

FED. ROAD REG. NO.	DIVISION	PROJECT NO.	SHEET NO.
9	COLO.	F 007-1(14)	5

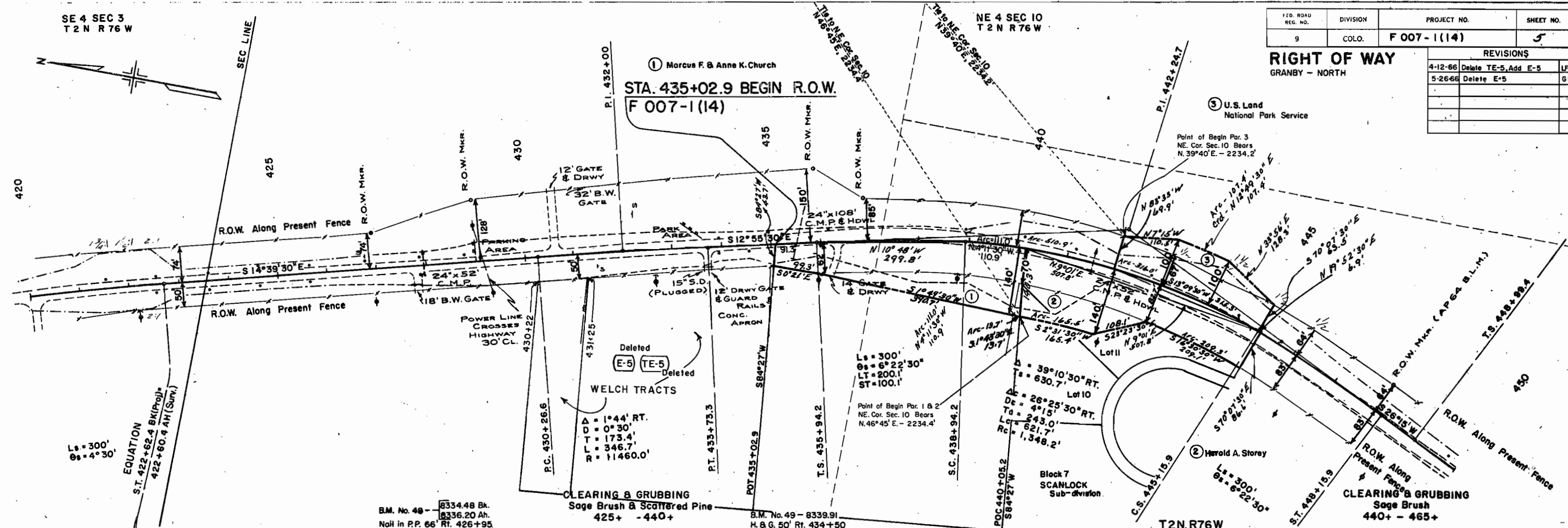
REVISIONS			
4-12-66	Delete TE-5, Add E-5	LFH	
5-26-66	Delete E-5	GM	

**RIGHT OF WAY**  
GRANBY - NORTH

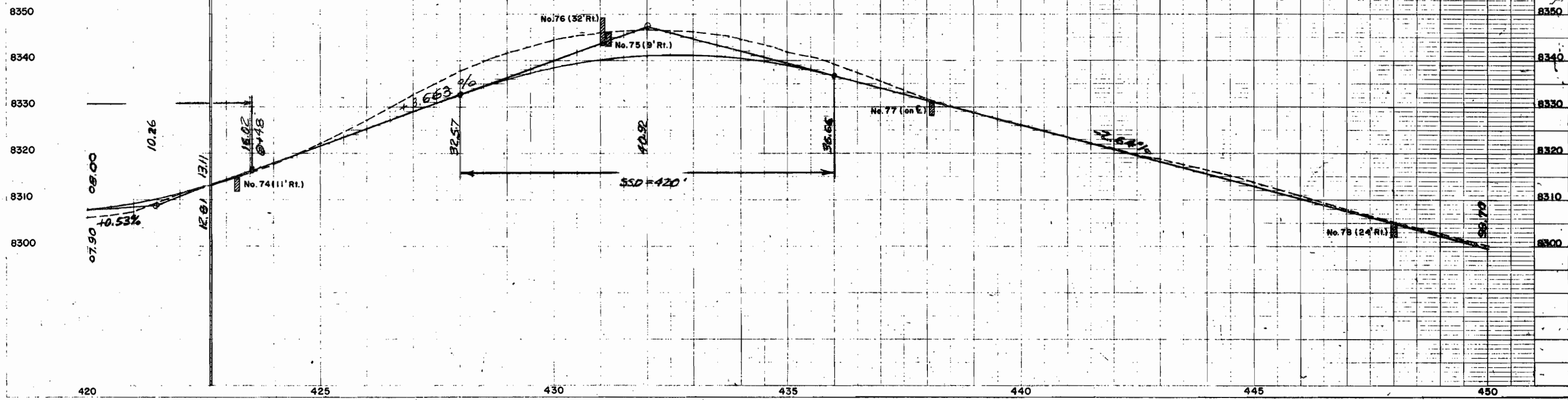
U.S. Land National Park Service

Point of Begin Par. 3  
NE. Cor. Sec. 10 Bears  
N. 39°40' E. - 2234.2'

① Marcus F. & Anne K. Church  
**STA. 435+02.9 BEGIN R.O.W.**  
F 007-1(14)



No. 74 Oil Mat 0.0' - 0.25' No. 74A A-2-6(0) 0.25' - 0.5' Sim. No. 73A No. 74B A-7-6(13) Sim. No. 73B 0.5' - 3.0'	No. 75 Oil Mat 0.0' - 0.25' No. 75A A-7-6(14) LL = 43 PI = 23 %200 = 81 CBR = 2.0	No. 76 A-7-6(14) 0.0' - 6.0' Sim. No. 75A	No. 77 Oil Mat 0.0' - 0.16' No. 77A A-7-6(16) 0.16' - 3.0' LL = 52 PI = 28 %200 = 69 CBR = 2.0	No. 78 Oil Mat 0.0' - 0.16' No. 78A A-7-6(16) 0.16' - 3.0' Sim. No. 77A
---	--	--	---	---



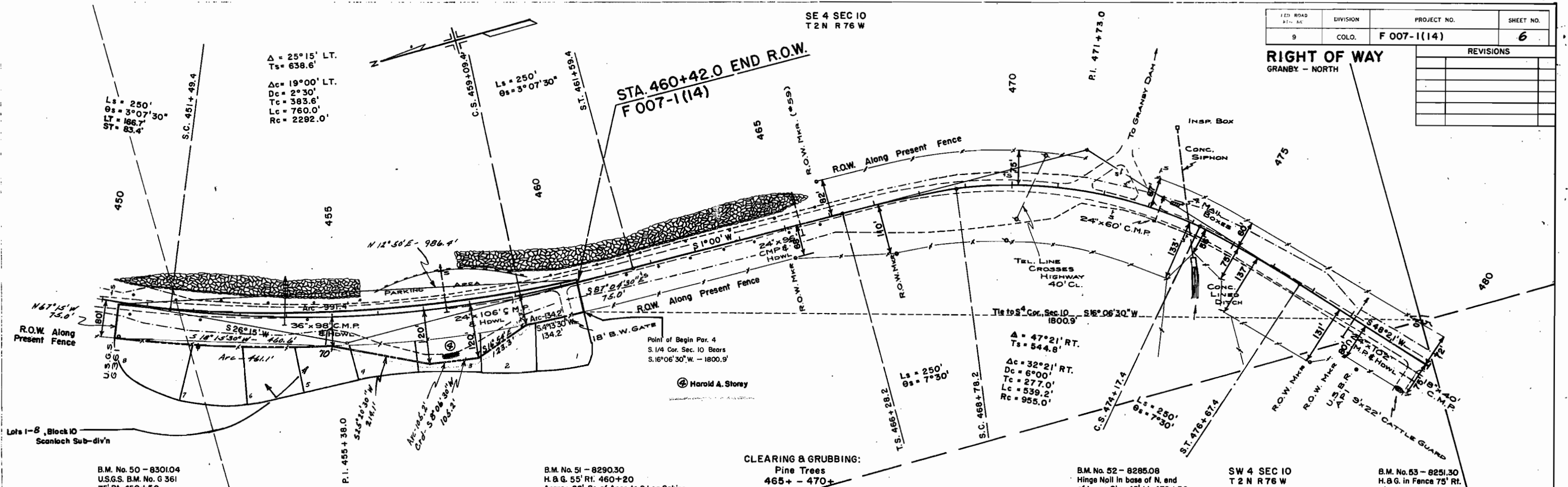
26078 26572  
26569 26573  
26570

26569 26572  
26570 26573

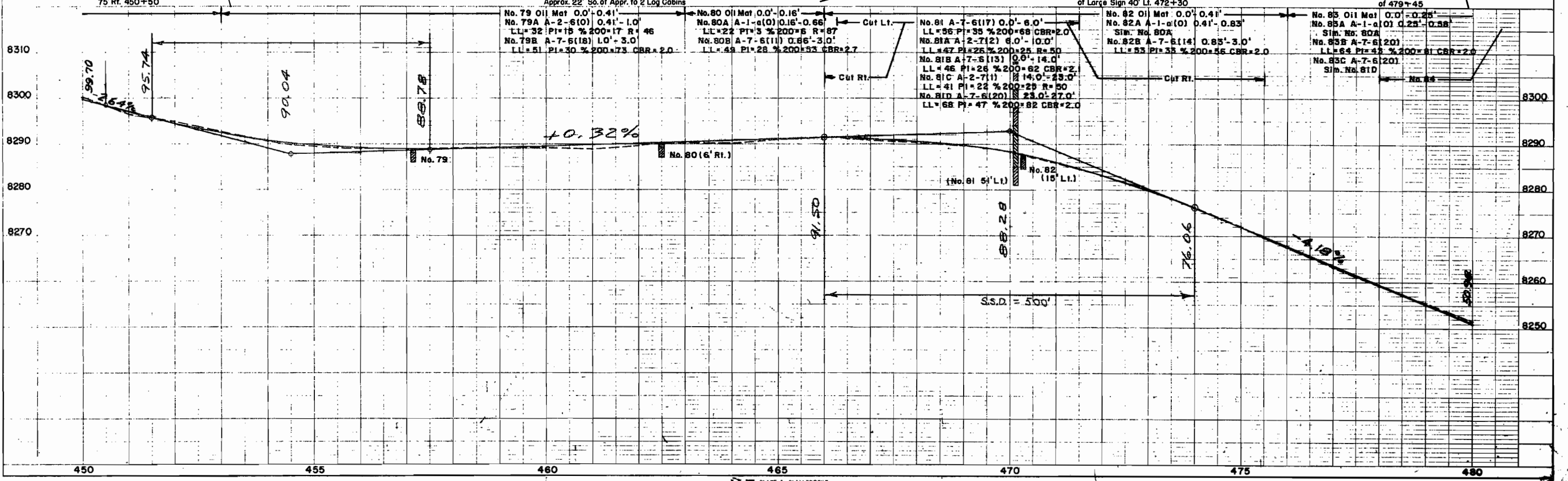
SE 4 SEC 10  
T 2 N R 76 W

FED. ROAD DIST. NO.	DIVISION	PROJECT NO.	SHEET NO.
9	COLO.	F 007-1(14)	6

RIGHT OF WAY		REVISIONS	
GRANBY - NORTH			



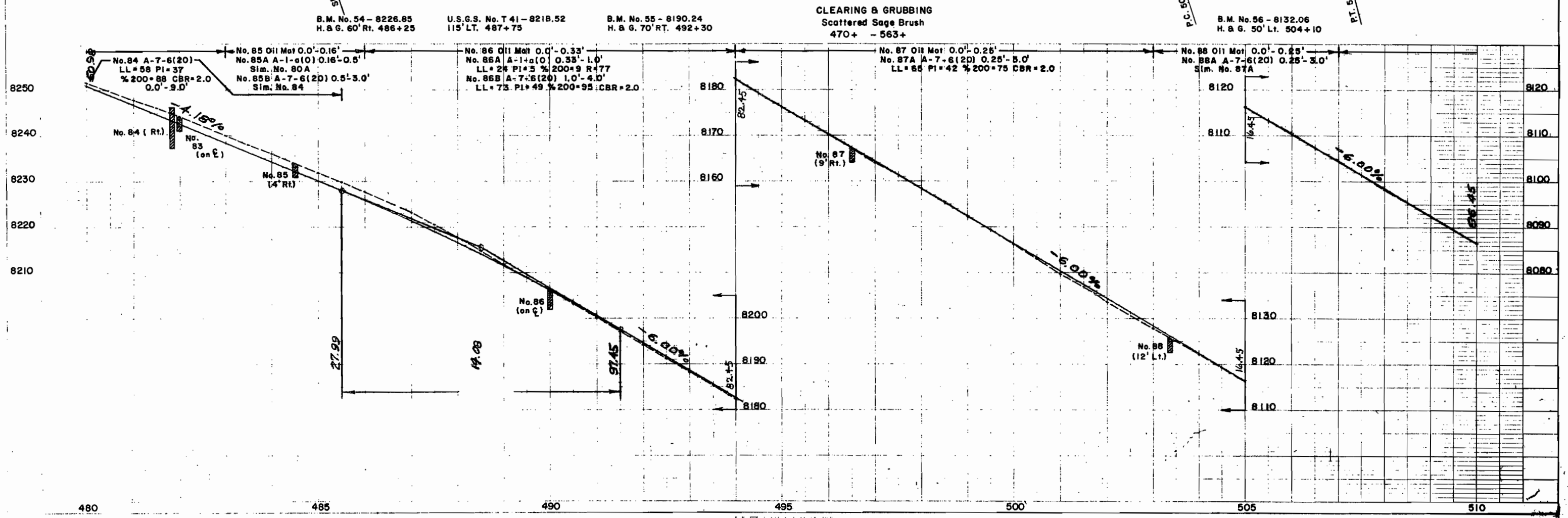
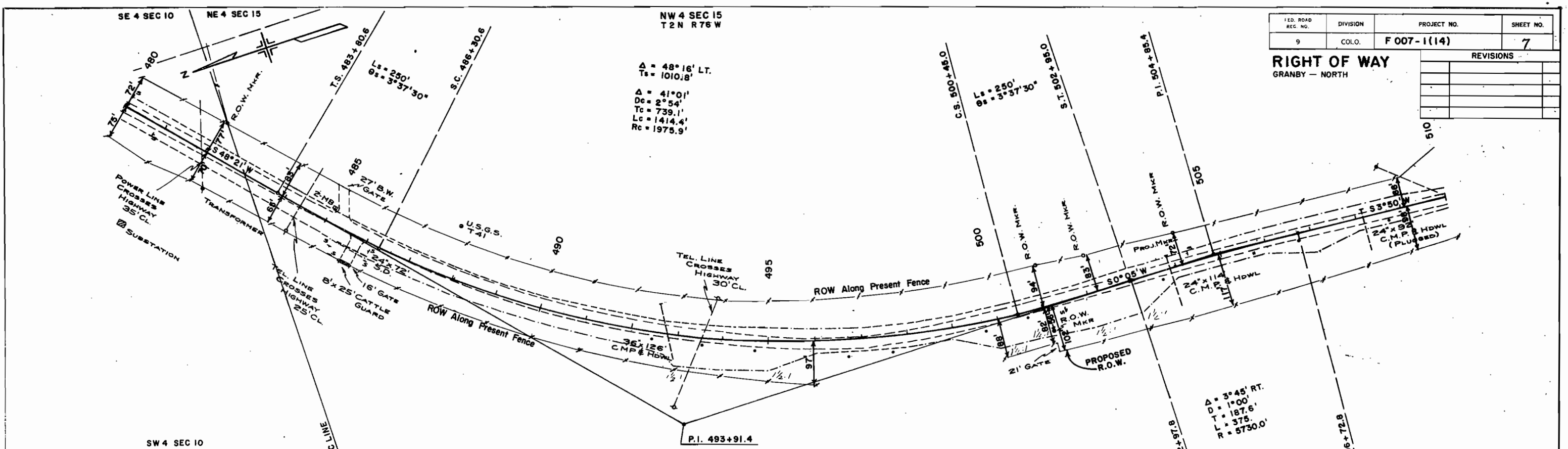
CLEARING & GRUBBING:  
Pine Trees  
465+ - 470+



FED. ROAD REG. NO.	DIVISION	PROJECT NO.	SHEET NO.
9	COLO.	F 007-1(14)	7

REVISIONS	

**RIGHT OF WAY**  
GRANBY - NORTH



26569 26572  
26570 26573

NW 4 SEC 15

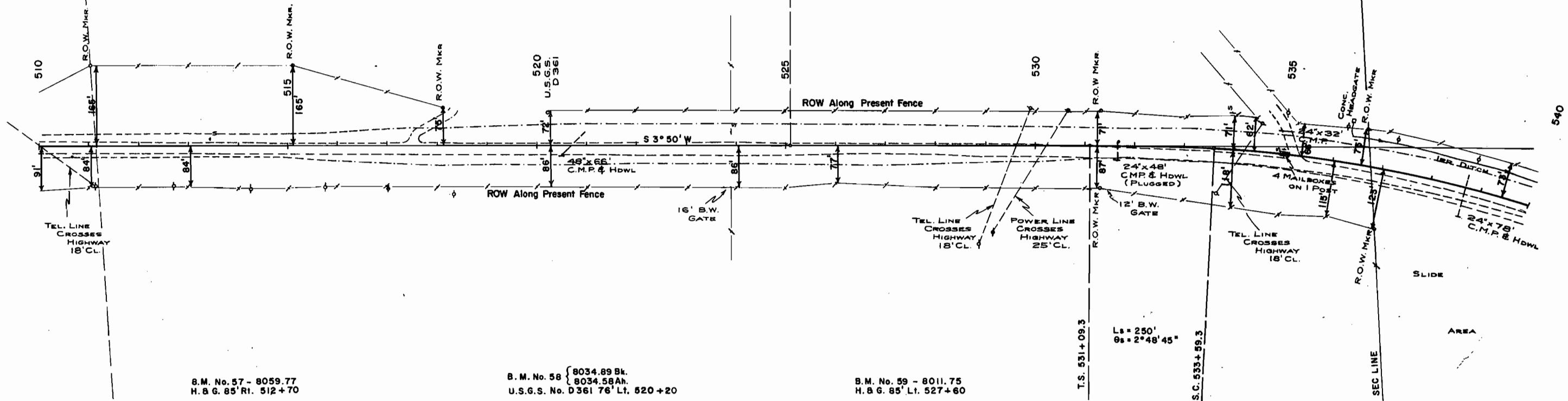
SW 4 SEC 15  
T 2 N R 76 W

REVISIONS

FED. ROAD DIST. NO.	DIVISION	PROJECT NO.	SHEET NO.
9	COLO.	F 007-1(14)	8

RIGHT OF WAY GRANBY - NORTH

NW 4 SEC 22

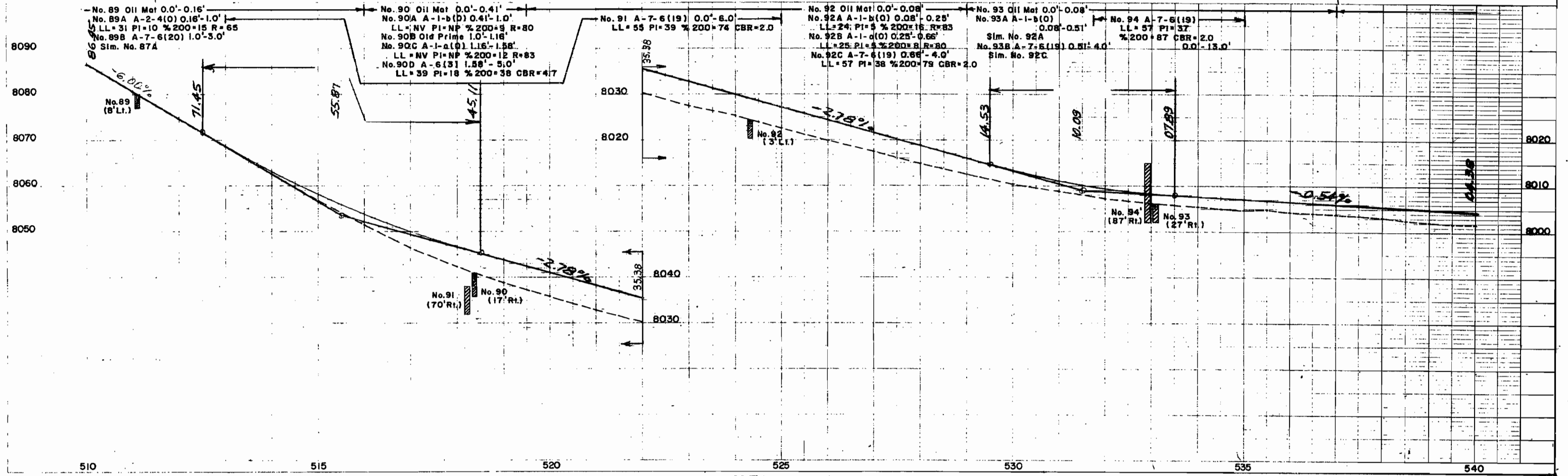


B.M. No. 57 - 8059.77  
H. & G. 85' Rt. 512+70

B.M. No. 58 { 8034.89 Bk.  
8034.58 Ah.  
U.S.G.S. No. D 361 76' Lt. 520+20

B.M. No. 59 - 8011.75  
H. & G. 85' Lt. 527+60

T.S. 531+09.3  
Ls = 250'  
Os = 2°48'45"  
S.C. 533+59.3



26572  
26573

540

8020  
8010  
8000

510 515 520 525 530 535 540

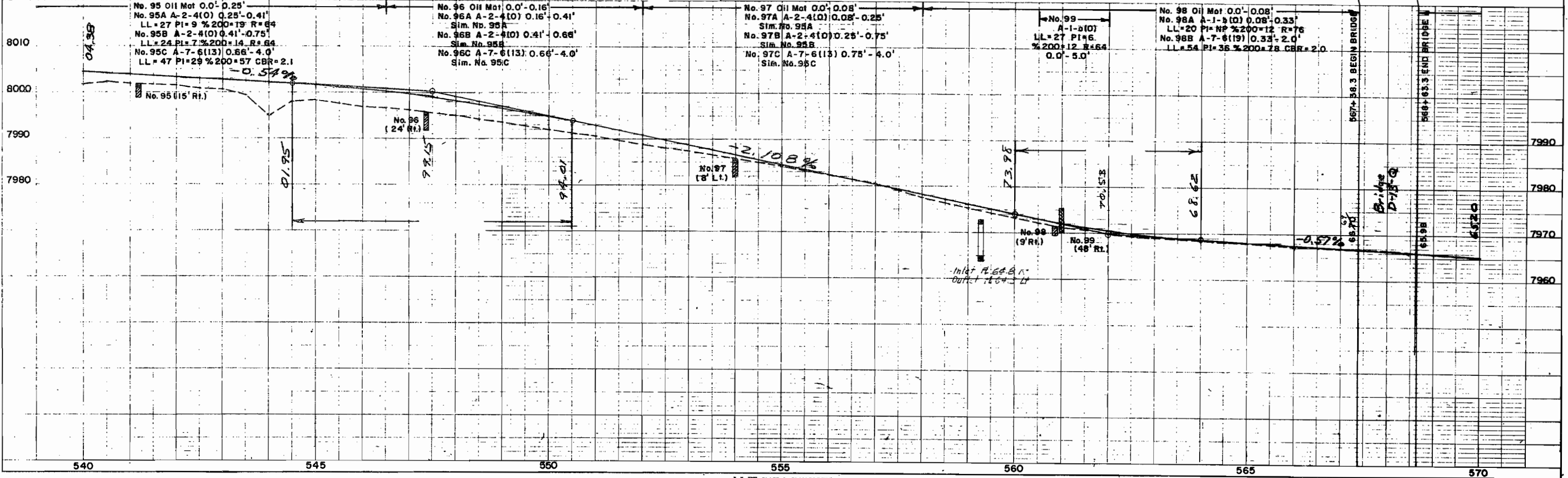
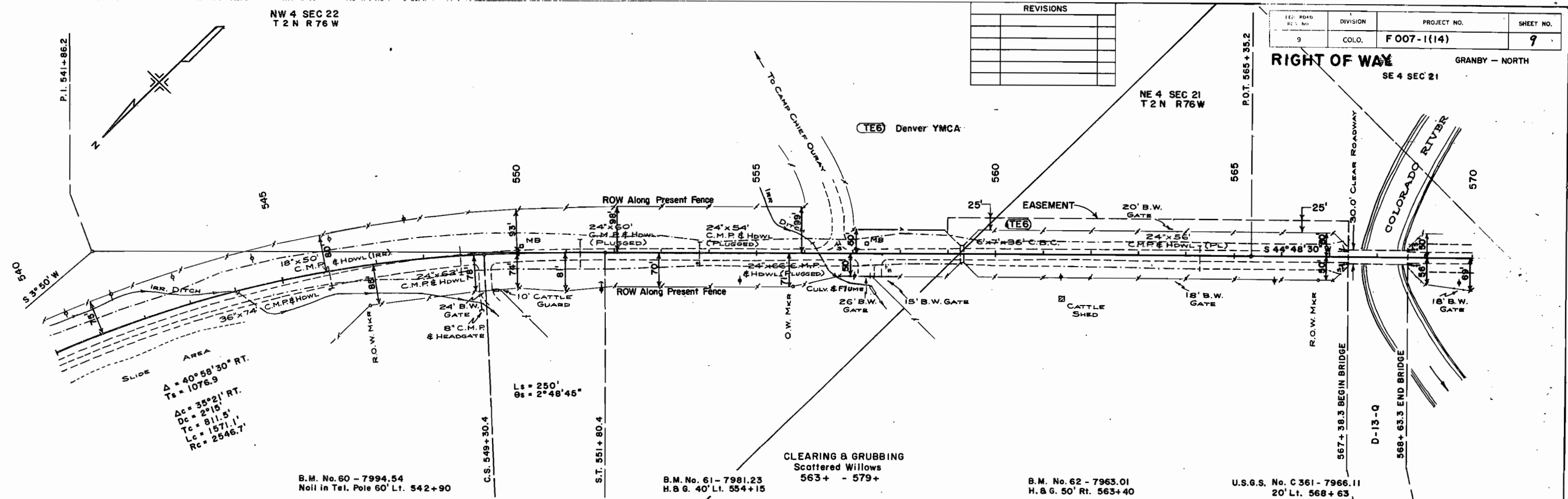
26569 26572  
26570 26573

NW 4 SEC 22  
T 2 N R 76 W

REVISIONS	

TEC. ROAD DIST. NO.	DIVISION	PROJECT NO.	SHEET NO.
9	COLO.	F 007-1(14)	9

RIGHT OF WAY  
SE 4 SEC 21  
GRANBY - NORTH



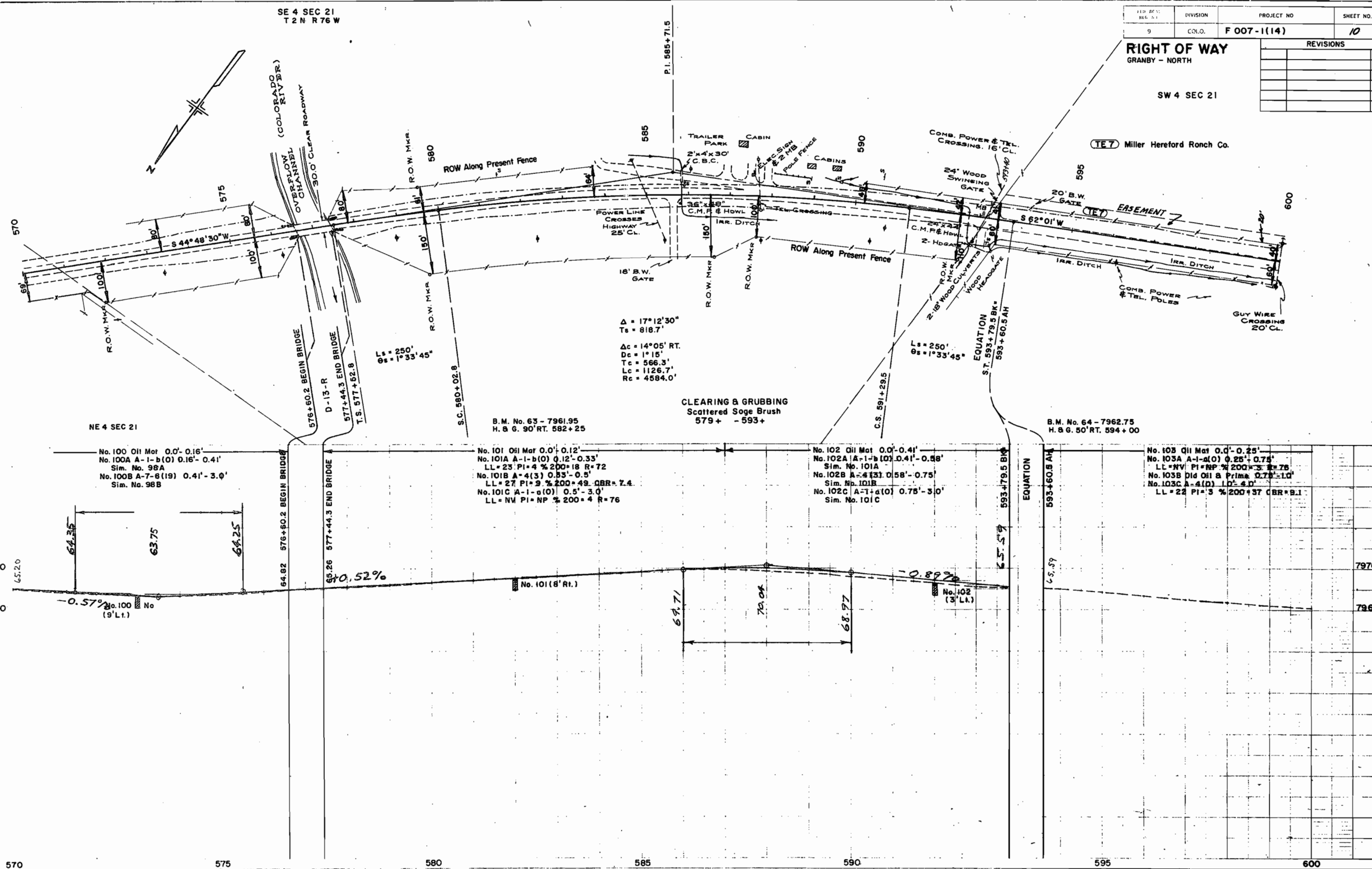
SE 4 SEC 21  
T 2 N R 76 W

REG. DIST. REG. 5.1	DIVISION 9	PROJECT NO. F 007-1(14)	SHEET NO. 10
------------------------	---------------	----------------------------	-----------------

RIGHT OF WAY GRANBY - NORTH	
REVISIONS	

SW 4 SEC 21

TE7 Miller Herford Ronch Co.



$\Delta = 17^\circ 12' 30''$   
 $T_s = 818.7'$   
 $\Delta c = 14^\circ 05' RT.$   
 $D_c = 1^\circ 15'$   
 $T_c = 566.3'$   
 $L_c = 1126.7'$   
 $R_c = 4584.0'$

CLEARING & GRUBBING  
 Scattered Sage Brush  
 579+ - 593+

B.M. No. 63 - 7961.95  
 H. & G. 90' RT. 582+25

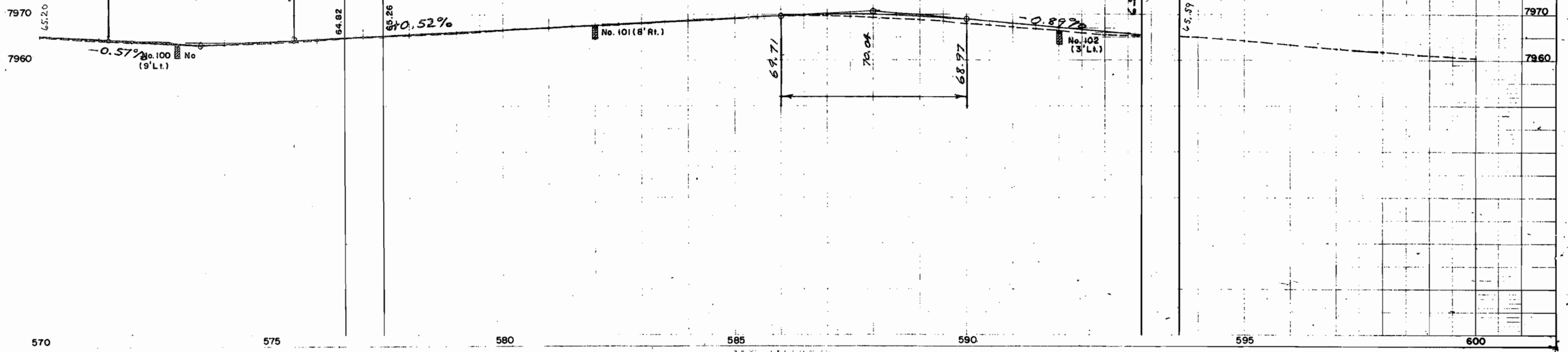
B.M. No. 64 - 7962.75  
 H. & G. 50' RT. 594+00

No. 100 Oil Mar 0.0'-0.16'  
 No. 100A A-1-b(0) 0.16'-0.41'  
 Sim. No. 98A  
 No. 100B A-7-8(19) 0.41'-3.0'  
 Sim. No. 98B

No. 101 Oil Mar 0.0'-0.12'  
 No. 101A A-1-b(0) 0.12'-0.33'  
 LL = 23 PI = 4 % 200 = 18 R = 72  
 No. 101B A-4(3) 0.33'-0.5'  
 LL = 27 PI = 9 % 200 = 49 CBR = 7.4  
 No. 101C A-1-a(0) 0.5'-3.0'  
 LL = NV PI = NP % 200 = 4 R = 76

No. 102 Oil Mar 0.0'-0.41'  
 No. 102A A-1-b(0) 0.41'-0.58'  
 Sim. No. 101A  
 No. 102B A-4(3) 0.58'-0.75'  
 Sim. No. 101B  
 No. 102C A-1-a(0) 0.75'-3.0'  
 Sim. No. 101C

No. 103 Oil Mar 0.0'-0.25'  
 No. 103A A-1-a(0) 0.25'-0.75'  
 LL = NV PI = NP % 200 = 3 R = 75  
 No. 103B Did Oil & Prime 0.75'-1.0'  
 No. 103C A-4(0) 1.0'-4.0'  
 LL = 22 PI = 3 % 200 = 37 CBR = 8.1



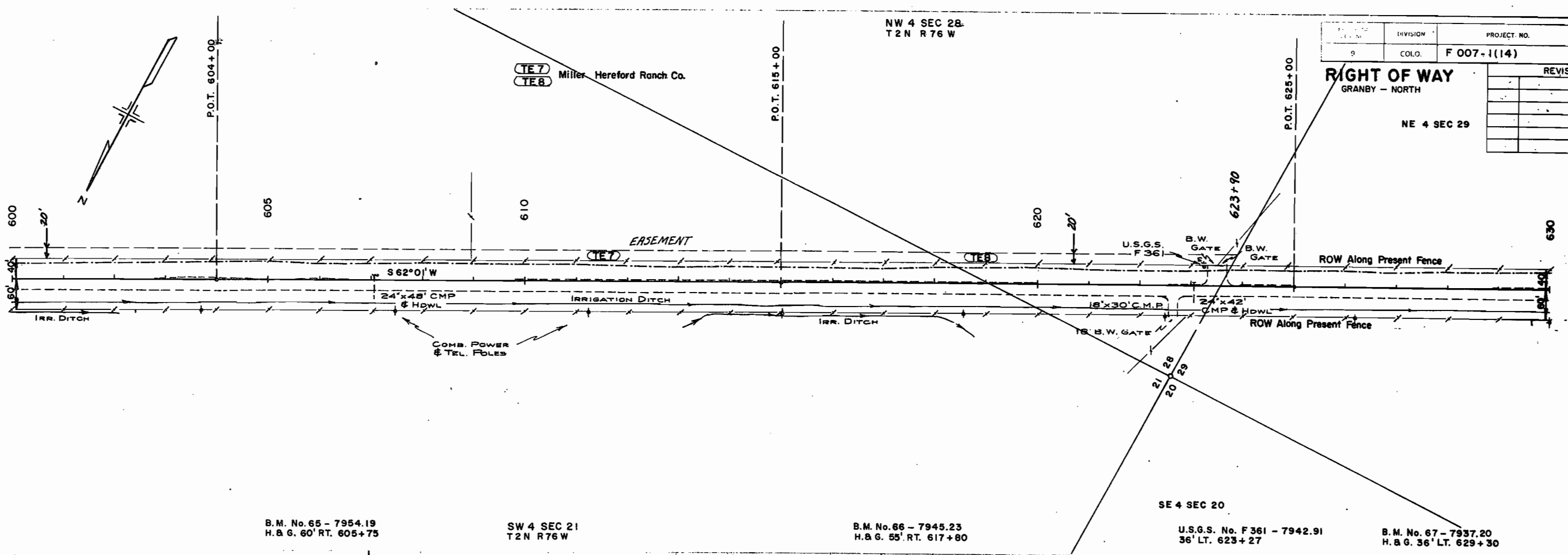
26569 26572  
 26570 26573

26569 26572  
26570 26573

NW 4 SEC 28  
T 2 N R 76 W

PROJECT NO.	DIVISION	PROJECT NO.	SHEET NO.
9	COLO.	F 007-1(14)	//
RIGHT OF WAY GRANBY - NORTH			
NE 4 SEC 29			
REVISIONS			

TE 7  
TE 8 Miller Hereford Ranch Co.



B.M. No. 65 - 7954.19  
H. & G. 60' RT. 605+75

SW 4 SEC 21  
T 2 N R 76 W

B.M. No. 66 - 7945.23  
H. & G. 55' RT. 617+80

U.S.G.S. No. F 361 - 7942.91  
36' LT. 623+27

B.M. No. 67 - 7937.20  
H. & G. 36' LT. 629+30

No. 104 Oil Mat 0.0'-0.08'  
 No. 104A Prime & Surfacing 0.08'-0.25'  
 No. 104B 1/2" (10) 0.25'-0.66'  
 Sim. No. 103A  
 No. 104C A-4(10) 0.66'-3.0'  
 Sim. No. 103C

No. 105 Oil Mat 0.0'-0.12'  
 No. 105A A-1-b(10) 0.12'-0.25'  
 LL=20 PI=NP %200=17 R=76  
 No. 105B Old Oil & Prime 0.25'-0.88'  
 No. 105C A-1-a(10) 0.88'-1.41'  
 LL=21 PI=2 %200=13 R=76  
 No. 105D A-4(2) 1.41'-4.0'  
 LL=22 PI=2 %200=46 CBR=7.9

7960  
7950  
7940

7960  
7950  
7940  
7930

600 605 610 615 620 625 630

K&Z

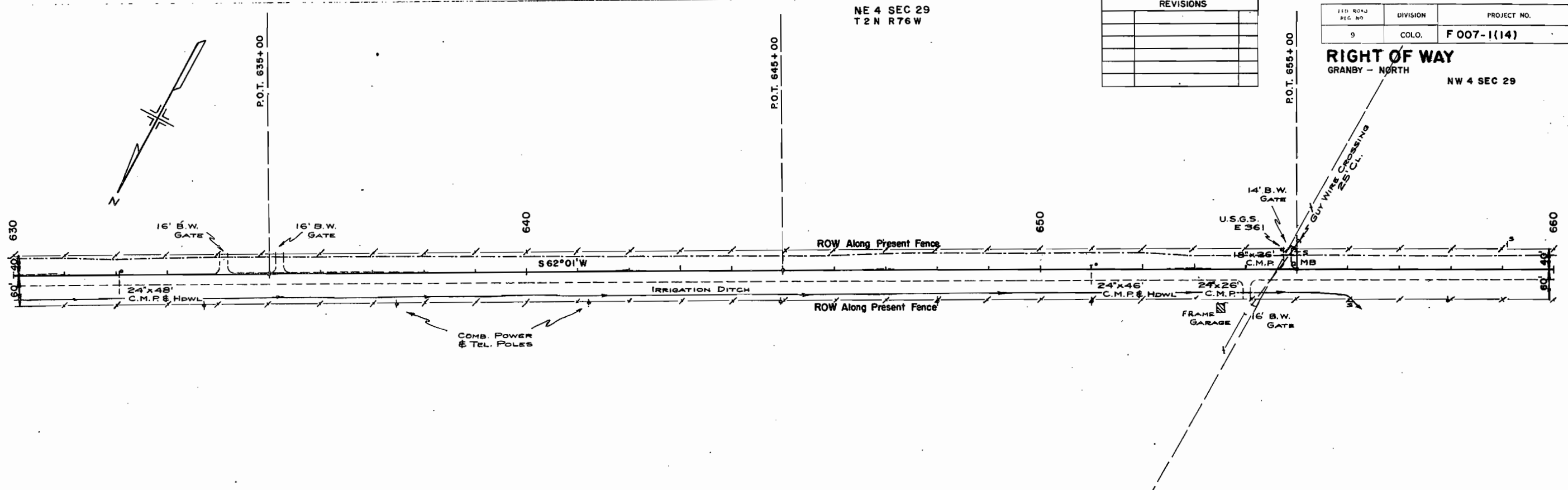
26569 26572  
26570 26573

NE 4 SEC 29  
T 2 N R 76 W

REVISIONS	

FED. ROAD REG. NO.	DIVISION	PROJECT NO.	SHEET NO.
9	COLO.	F 007-1(14)	12

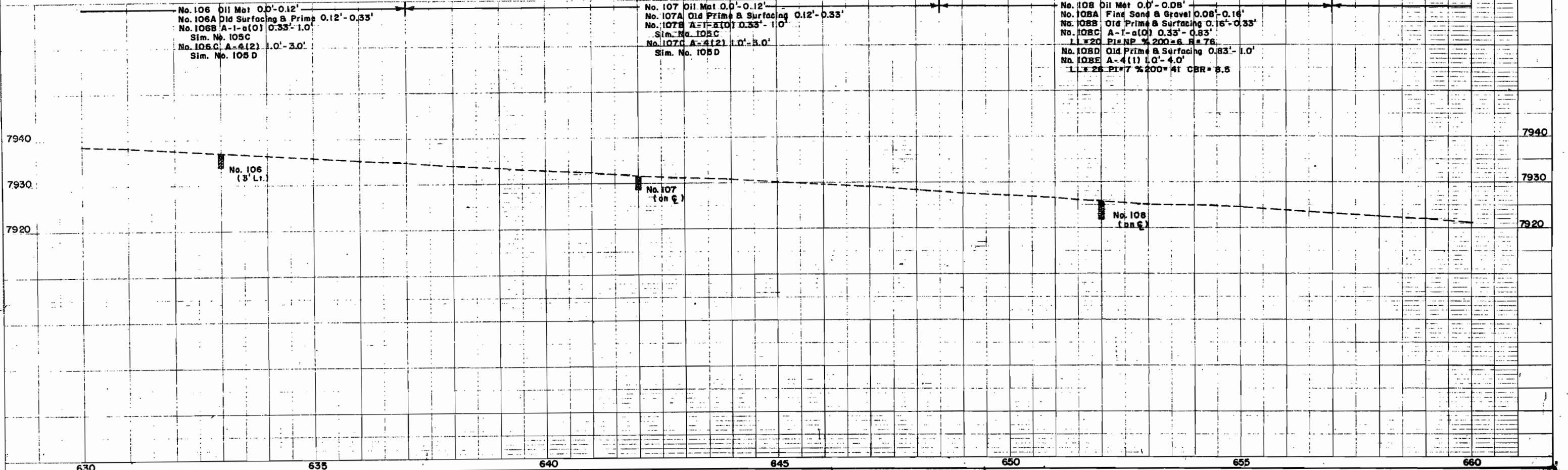
RIGHT OF WAY  
GRANBY - NORTH  
NW 4 SEC 29



B.M. No. 68 - 7932.68  
H. & G. 35' LT. 641+40

CLEARING & GRUBBING  
None  
593+ - 718+

B.M. No. 69 - 7922.96  
U.S.G.S. No. E 361  
35' Lt. 654+75



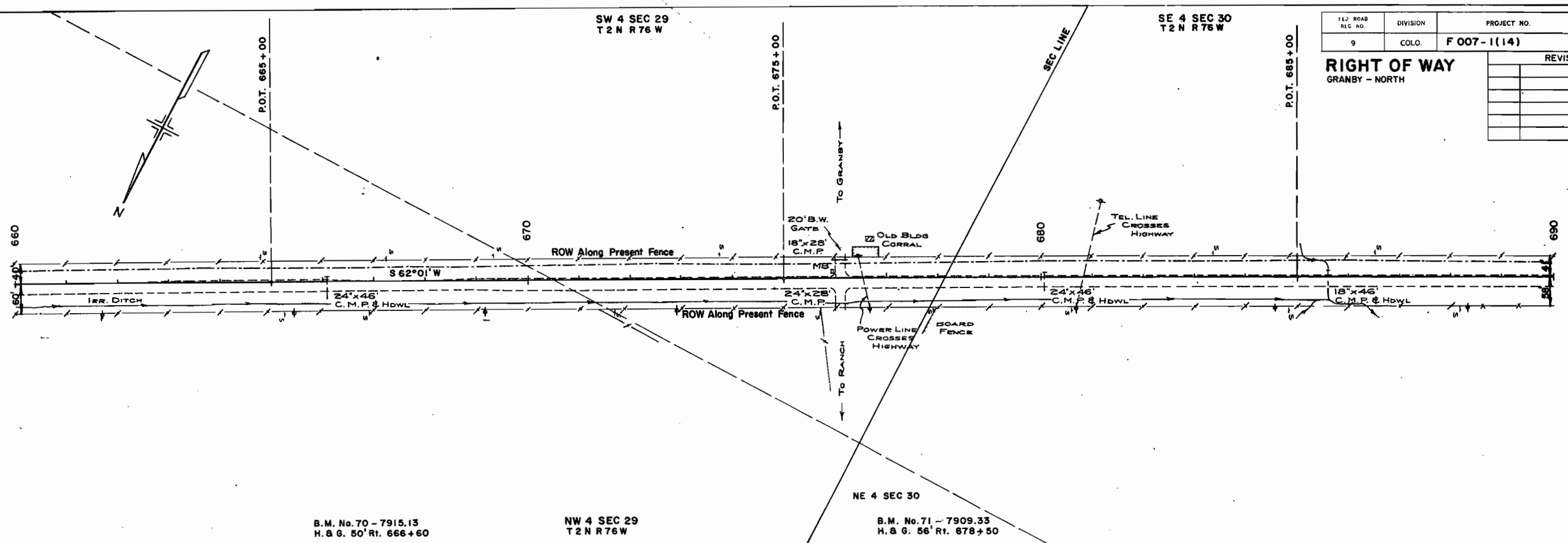
SW 4 SEC 29  
T 2 N R 76 W

SE 4 SEC 30  
T 2 N R 76 W

FILED ROAD REG. NO.	DIVISION	PROJECT NO.	SHEET NO.
9	COLO.	F 007-1(14)	13

**RIGHT OF WAY**  
GRANBY - NORTH

REVISIONS	



B.M. No. 70 - 7915.13  
H. & G. 50' Rt. 666+60

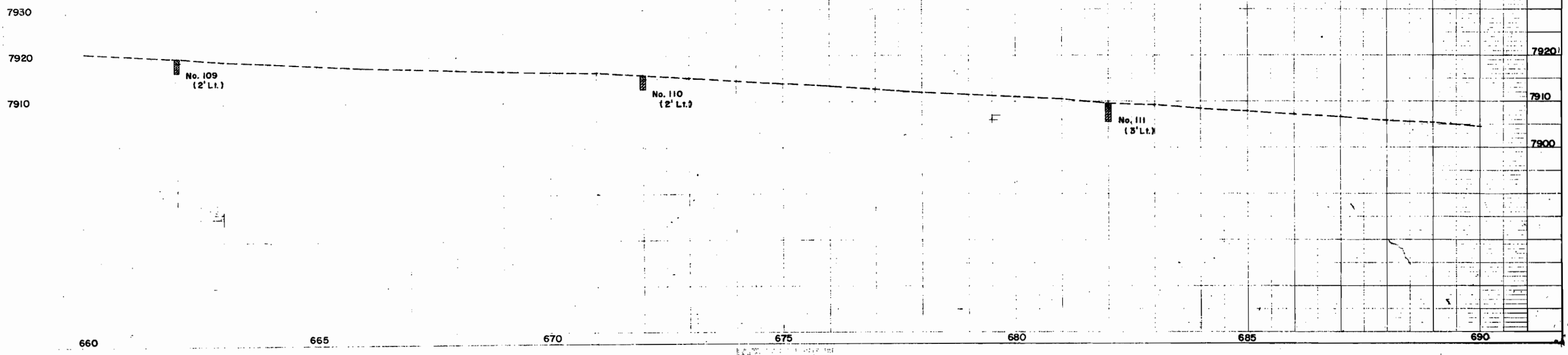
NW 4 SEC 29  
T 2 N R 76 W

B.M. No. 71 - 7909.33  
H. & G. 56' Rt. 678+50

No. 109 Oil Mat 0.0'-0.16'  
No. 109A A-1-a(0) 0.16'-0.91'  
Sim. No. 108 C.  
No. 109B A-4(1) 0.91'-3.0'  
Sim. No. 108 E

No. 110 Oil Mat 0.0'-0.16'  
No. 110A A-1-a(0) 0.16'-0.91'  
Sim. No. 108 C.  
No. 110B A-4(1) 0.91'-3.0'  
Sim. No. 108 E

No. 111 Oil Mat 0.0'-0.08'  
No. 111A A-1-a(0) 0.08'-1.0'  
LL=20 PI=NP % 200=6 R=76'  
No. 111B A-4(0) 1.0'-4.0'  
LL=21 PI=2 % 200=37 CBR=9.1



26569  
26570

26571

660 665 670 675 680 685 690

SE 4 SEC 30  
T2N R76W

1 ED ROAD REG. NO.	DIVISION	PROJECT NO.	SHEET NO.
9	COLO.	F 007-1(14)	14

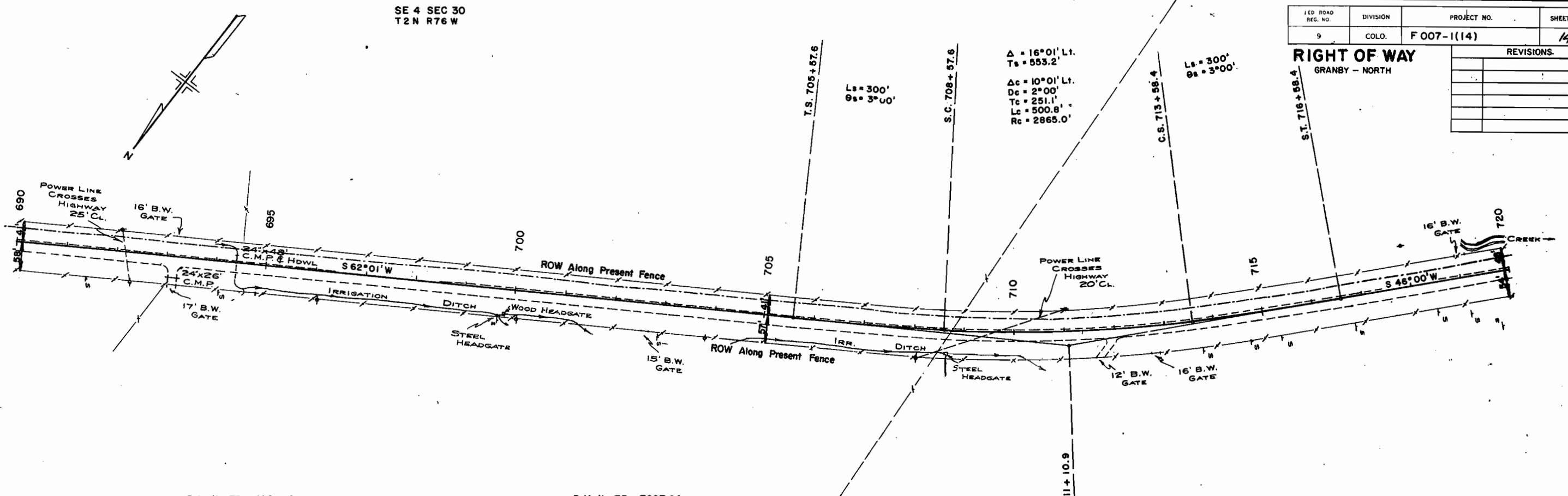
REVISIONS	

**RIGHT OF WAY**  
GRANBY - NORTH

$\Delta = 16^{\circ}01' Lt.$   
 $T_s = 553.2'$   
 $\Delta c = 10^{\circ}01' Lt.$   
 $D_c = 2^{\circ}00'$   
 $T_c = 251.1'$   
 $L_s = 500.8'$   
 $R_c = 2865.0'$

$L_s = 300'$   
 $\theta_s = 3^{\circ}00'$

$L_s = 300'$   
 $\theta_s = 3^{\circ}00'$



B.M. No. 72 - 7901.80  
H. & G. 56' Rt. 690+05

B.M. No. 73 - 7897.64  
H. & G. 55' Rt. 701+55

B.M. No. 74 - 7899.08  
U.S.G.S. No. B.361  
53' Rt. 711+45

SW 4 SEC 30  
T2N R76W

No. 112 Oil Mat 0.0' - 0.16'  
No. 112A A-1-a(0) 0.16' - 1.0'  
Sim. No. 111A  
No. 112B A-4(0) 1.0' - 3.0'  
Sim. No. 111B

No. 113 Oil Mat 0.0' - 0.08'  
No. 113A A-1-a(0) 0.08' - 0.91'  
Sim. No. 111A  
No. 113B A-4(0) 0.91' - 3.0'  
Sim. No. 111B

No. 114 Oil Mat 0.0' - 0.08'  
No. 114A A-1-a(0) 0.08' - 1.33'  
LL = 20 PI = 58 % 200 = 90 CBR = 210  
No. 114B Oil Mat 1.33' - 1.91'  
No. 114C A-7-a(0) 1.91' - 1.92'  
Sim. No. 111A  
No. 114D A-7-B(20) 1.92' - 4.0'  
LL = 23 PI = 58 % 200 = 90 CBR = 210

No. 112  
(3' Lt.)

No. 113  
(2' Lt.)

No. 114  
(5' Lt.)

26568 26572  
26570 26573

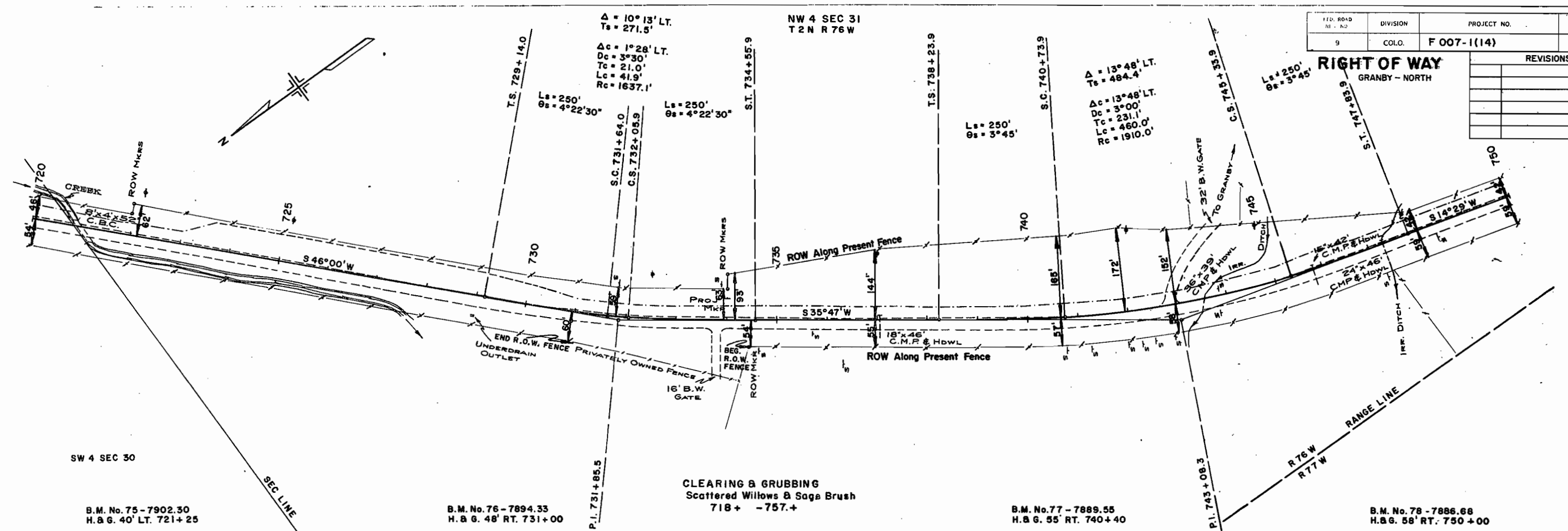
26571

690 695 700 705 710 715 720

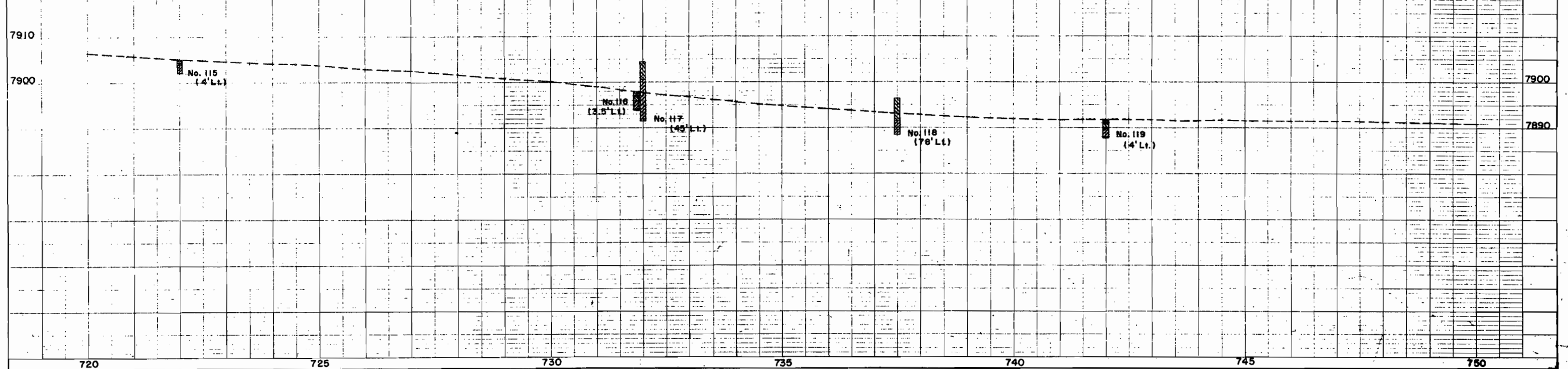
170. ROAD No. 102	DIVISION	PROJECT NO.	SHEET NO.
9	COLO.	F 007-1(14)	15

REVISIONS	



No. 115 Oil Mat 0.0'-0.16' No. 115A A-1-a(10) 0.16'-0.91' Sim. No. 114A No. 115B Old Oil Mat 0.91'-1.08' No. 115C A-2-4(1) 1.08'-3.0' LL = 27 PI = 7 % 200 = 30 R = 64	No. 116 Oil Mat 0.0'-0.08' No. 116A Prime 8 Surfacing 0.08'-0.25' No. 116B A-1-a(10) 0.25'-0.91' Sim. No. 114A No. 116C Old Oil Mat 0.91'-1.0' No. 116D A-4(1) 1.0'-2.0' LL = 24 PI = 6 % 200 = 38 CBR = 8.5 No. 116E A-2-4(1) 2.0'-4.0' LL = NV PI = NP % 200 = 29 R = 64	No. 117 A-4(1) 0.0'-4.0' LL = 19 PI = NP % 200 = 38 CBR = 12.1 No. 117A A-2-4(1) 4.0'-13.0' LL = 20 PI = NP % 200 = 30 R = 64	No. 118 A-4(1) 0.0'-5.0' LL = 20 PI = 3 % 200 = 40 CBR = 8.5 No. 118A A-2-4(1) 5.0'-8.0' LL = 24 PI = 5 % 200 = 32 R = 64	No. 119 Oil Mat 0.0'-0.25' No. 119A A-1-a(10) 0.25'-0.83' LL = 21 PI = NP % 200 = 7 R = 80 No. 119B Old Oil Mat 0.83'-0.91' No. 119C A-1-a(10) 0.91'-2.16' Sim. No. 119A No. 119D A-7-8(1) 2.16'-4.0' LL = 47 PI = 30 % 200 = 58 CBR = 2.1
---	--	--	--	---



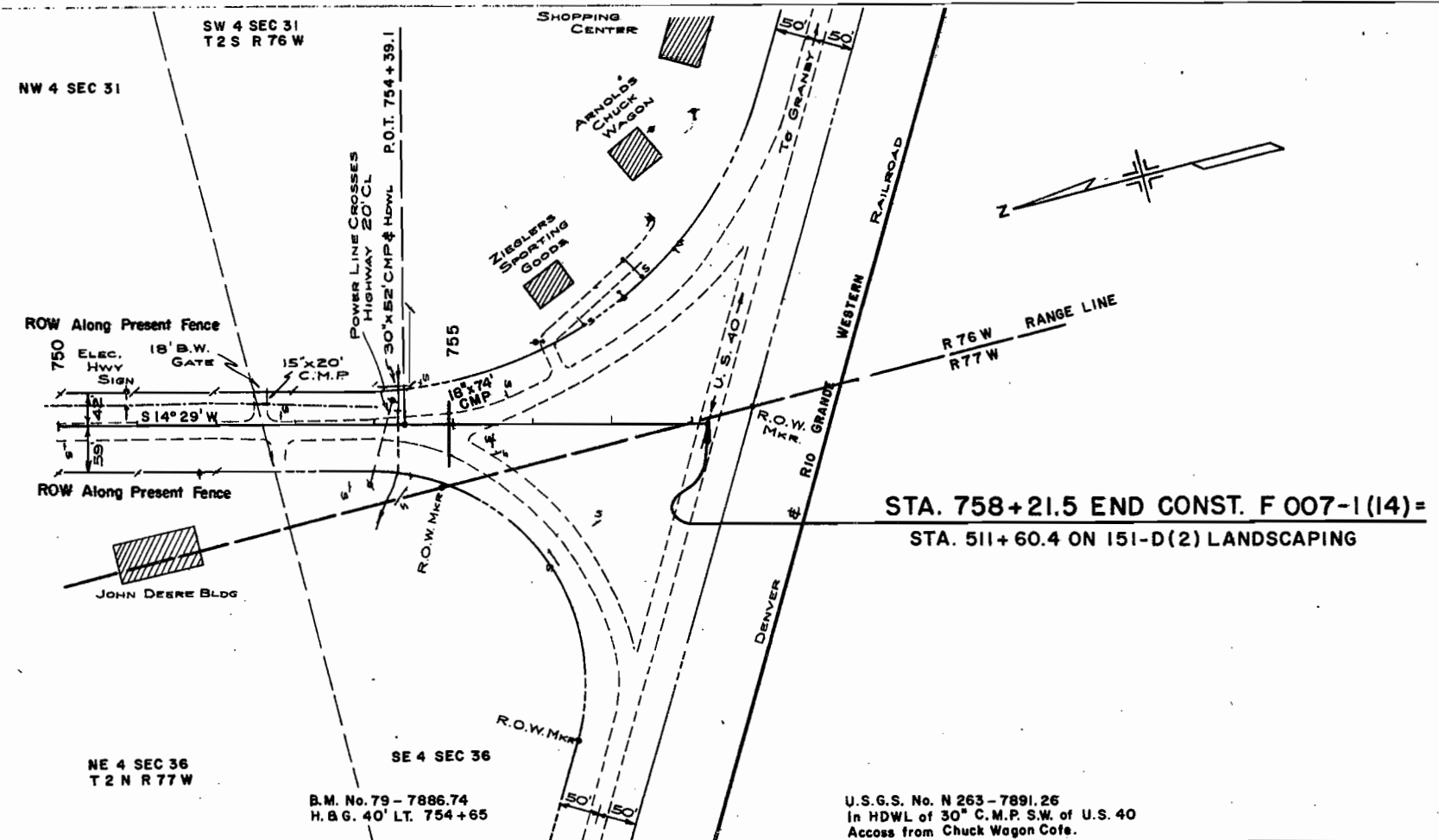
26570 26571 26572 26573 26574

26571

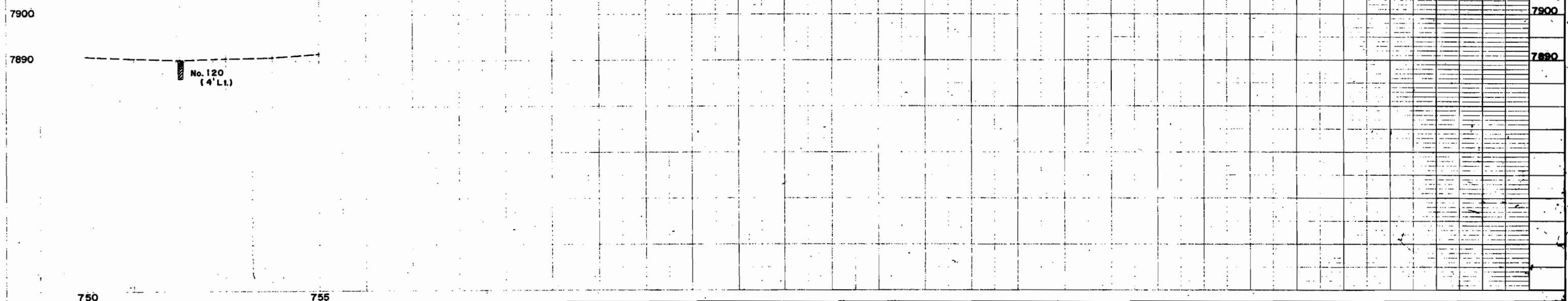
FED. ROAD REG. NO.	DIVISION	PROJECT NO.	SHEET NO.
9	COLO.	F 007-1(14)	16

**RIGHT OF WAY**  
GRANBY - NORTH

REVISIONS	



- No. 120 Oil Mat 0.0' - 0.12'
- No. 120A Fine Gravel 0.12' - 0.16'
- No. 120B Prime 0.16' - 0.25'
- No. 120C Surfacing & Prime 0.25' - 0.5'
- No. 120D A-1-a(1) 0.5' - 0.83'
- Sim. No. 119A
- No. 120E A-2-4(D) 0.83' - 1.33'
- LL = 30 PI = 7 % 200 = 12 R = 64
- No. 120F A-6471 1.33' - 4.0'
- LL = 37 PI = 21 % 200 = 51 CBR = 3.7



26569 26572  
26573 26574  
26570 26571



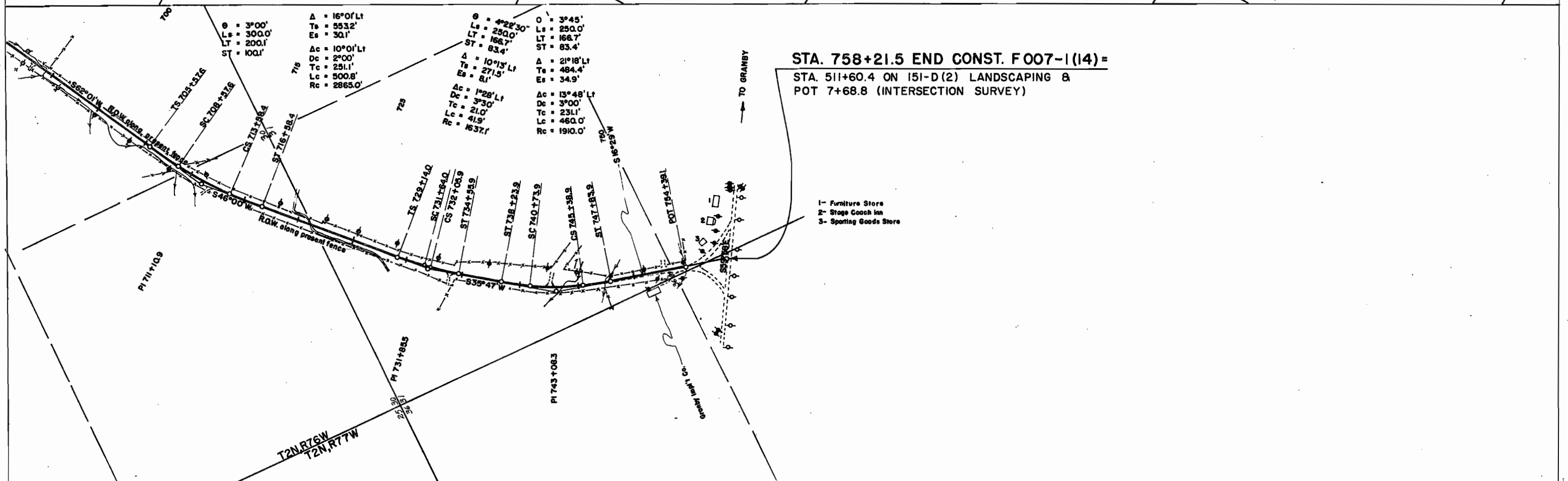
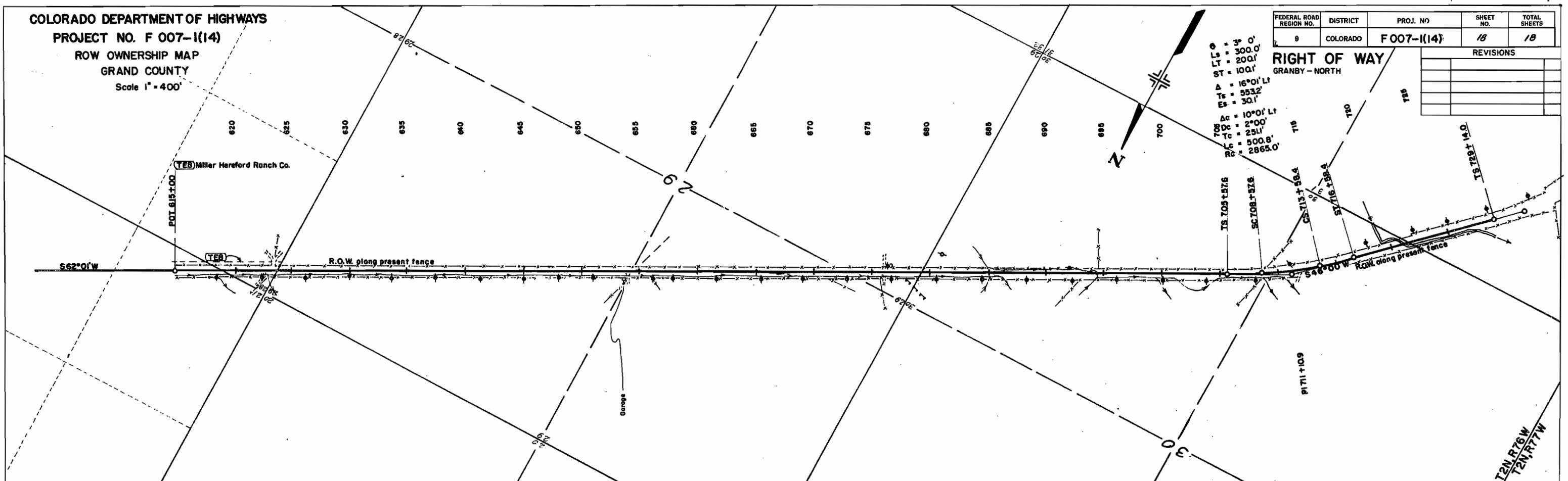
**COLORADO DEPARTMENT OF HIGHWAYS**  
**PROJECT NO. F 007-1(14)**  
**ROW OWNERSHIP MAP**  
**GRAND COUNTY**  
 Scale 1" = 400'

FEDERAL ROAD REGION NO.	DISTRICT	PROJ. NO	SHEET NO.	TOTAL SHEETS
9	COLORADO	F007-1(14)	18	18

REVISIONS	

**RIGHT OF WAY**  
**GRANBY - NORTH**

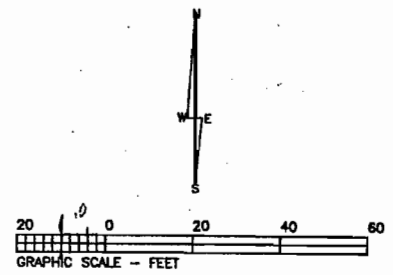


**STA. 758+21.5 END CONST. F007-1(14) =**  
**STA. 511+60.4 ON 151-D(2) LANDSCAPING &**  
**POT 7+68.8 (INTERSECTION SURVEY)**

- 1- Furniture Store
- 2- Stage Coach Inn
- 3- Sporting Goods Store

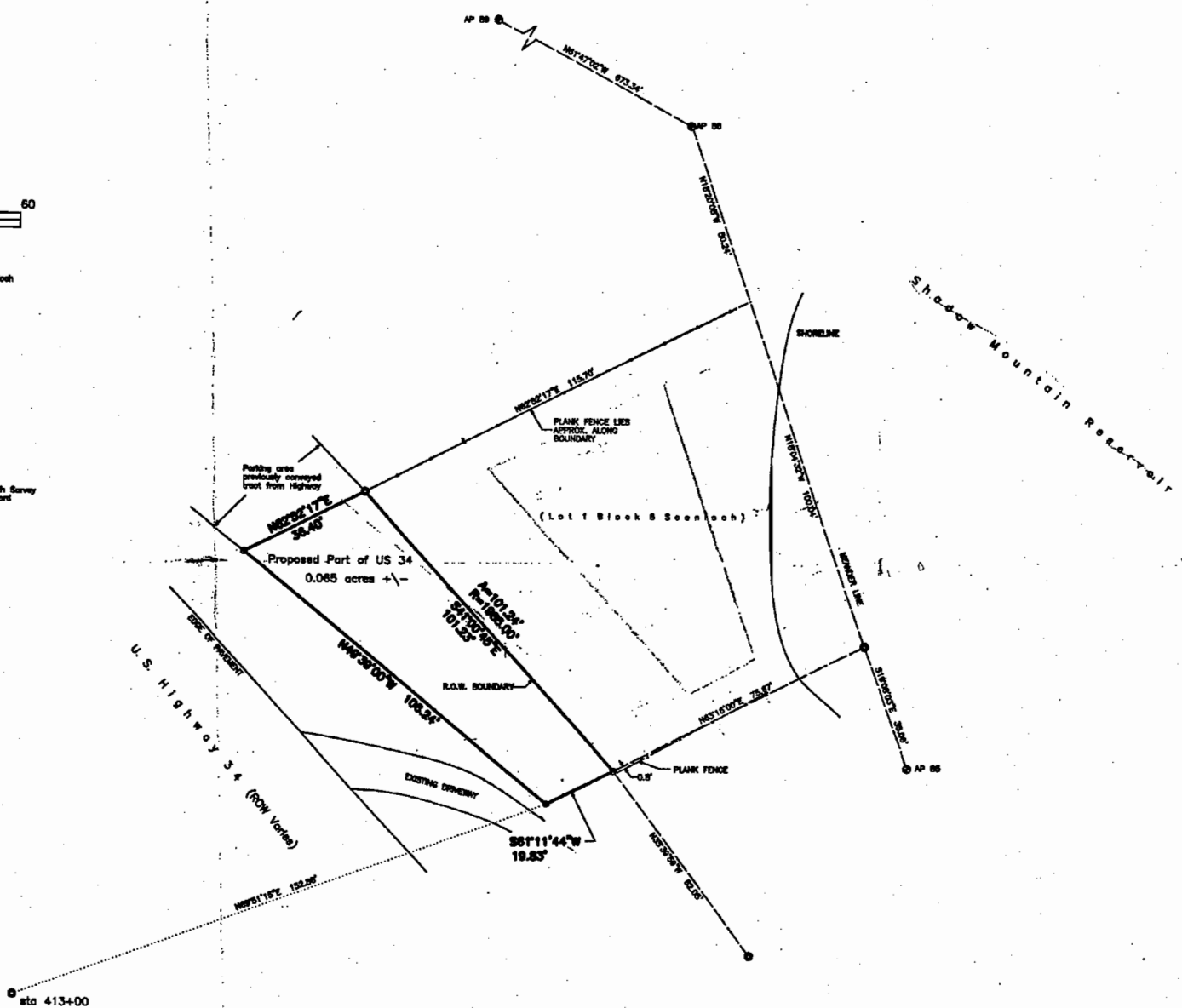
# Parcel 9-X

## Land Survey Plat Proposed Part of US Hwy 34 In Sec.3, T2N R76W 6TH PM Grand County, Colorado



- Scale of Bearings between monuments shown per record plat, Scotch Subdivision.
- Legend**
- - Found 3" aluminum cap, USBK
  - - Found 3/4" rebar
  - - Found 1/2" rebar
  - - Found 1" rebar
  - - Found 1/2" iron pipe
  - - Found Highway ROW Monument
  - - Set aluminum capped, 1/2" rebar stamped PLS 22871.
  - - Set nail and tag stamped PLS 22871

Note: This Land Survey Plat is not a determination of title by Azimuth Survey Company. The client did not require a search and survey of any record encumbrances which may affect the property.



**LEGAL DESCRIPTION**

Of a proposed part of US Highway 34, in Section 3, T2N, R76W of the 6th PM, Grand County, Colorado, described as follows:

Commencing at Shadow Mountain Reservoir boundary line AP 05, THENCE North 18 degrees 18 minutes 00 seconds West, along the Reservoir Line, for a distance of 35.00 feet, THENCE South 83 degrees 18 minutes 00 seconds West for a distance of 70.67 feet to a 1/2" rebar, being the point of beginning;

THENCE South 83 degrees 18 minutes 00 seconds West for a distance of 30.00 feet to an aluminum capped, 1/2" rebar stamped PLS 22871;

THENCE North 49 degrees 30 minutes 00 seconds West for a distance of 108.24 feet to a mason nail and tag stamped PLS 22871;

THENCE North 82 degrees 02 minutes 17 seconds East for a distance of 35.40 feet to a 1" rebar, being a point on the northeast right of way boundary of US Highway 34;

THENCE along a curve to the right having a radius of 1888.00 feet and an arc length of 101.23 feet, being subtended by a chord of South 41 degrees 00 minutes 40 seconds East for a distance of 101.23 feet along the right of way, to the point of beginning.

Together with and subject to covenants, assessments, and restrictions of record.

Said property contains 0.065 acres more or less.

This Land Survey Plat was prepared for Mr. Lewis McGrath, and shows the results of a field survey done under my direction.

Warren D. Ward, Colorado PLS 22871.



**Azimuth Survey Company**  
PO Box 653, Fraser, CO 80442  
ph (970) 887-0482 fax (970) 887-0483

Land Survey Plat Proposed Part of US Highway 34 In Section 10, T2N, R76W, 6TH PM Grand County, Colorado	
07-30-02	JN AS119 FR ASD
Revised 01-02-01	grand dms