

INDEX OF SHEETS

- SHEET No. 1 SKETCH MAP AND TITLE PAGE.
- 2 TYPICAL SECTION GENERAL NOTES AND TABULATION OF LENGTH AND DESIGN AND SHAPING ROADBED
  - 3 SUMMARY OF APPROXIMATE QUANTITIES, TABULATION OF TIMBER GUARD POSTS, AND FENCING REQUIREMENTS & DETAILS OF METAL SHEET PILING
  - 4 SUBBASE & SURFACING PLANS, DETAIL OF RIPRAP & MITER STA. 3573+
  - 5 LIST OF STRUCTURES
  - 6 STANDARD METHODS FOR SUPERELEVATION AND WIDENING OF CURVES
  - 7 STANDARD SIDE APPROACH ROADS, FLARING, CUT SLOPE TREATMENT & WIDENING AT BRIDGES & AT CREST OF GRADES
  - 8 STANDARD MARKER POSTS
  - 9 STANDARD TIMBER GUARD POSTS
  - 10 STANDARD WIRE FENCE WITH WOODEN POSTS
  - 11 STANDARD ROADWAY CONSTRUCTION TRAFFIC SIGNS
  - 12 STANDARD TYPES OF DITCHES AND CONSTRUCTION METHODS
  - 13 STANDARD HEADWALLS AND APRONS FOR C.M.P. CULVERTS
  - 14-26 ALIGNMENT PLAN & PROFILE
  - 27 SUMMARY OF EARTHWORK QUANTITIES
  - 28-52 CROSS SECTIONS

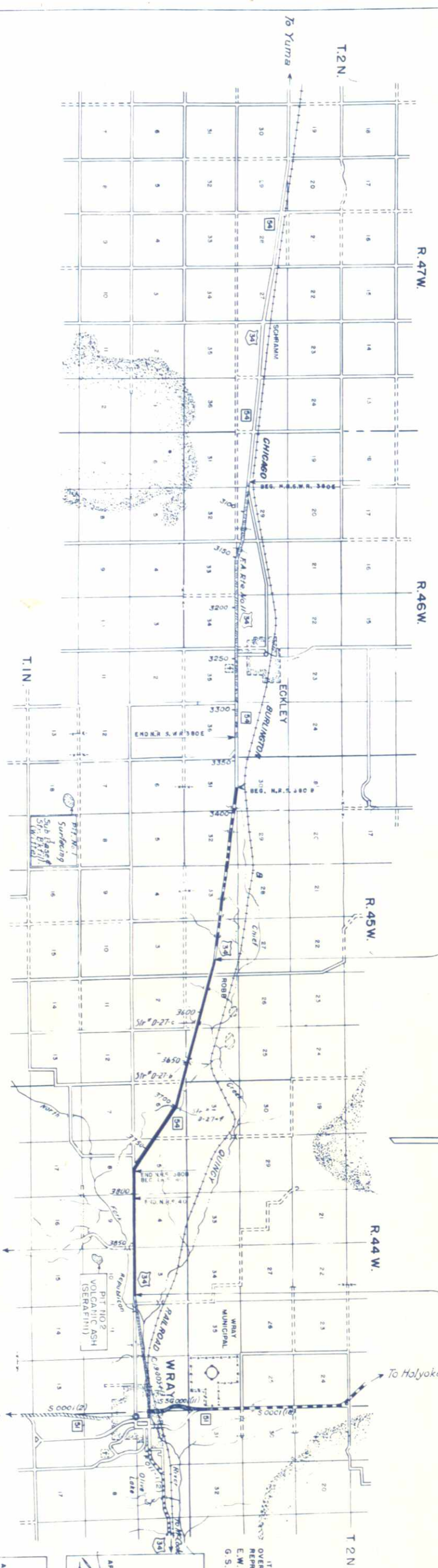
COLORADO DISTRICT ENGR'S. COPY  
 DEPARTMENT OF HIGHWAYS  
 PLAN AND PROFILE OF PROPOSED  
 FEDERAL AID PROJECT FOII-1(5)  
 STATE HIGHWAY NO. 54  
 YUMA COUNTY

- CONVENTIONAL SIGNS
- CENTER LINE PLAN SHEET
  - RIGHT OF WAY LINE H.W. MARKETS
  - TOWNSHIP OR RANGE LINE SECTION LINE
  - LAND LINES TITLE SHEET
  - RAILROAD BARBED WIRE FENCE
  - SNOW FENCE
  - TELEPHONE & TELEGRAPH LINES
  - POWER LINE
  - PRESENT ROAD (Plan Sheet)

ON PLAN, 1 IN. = 100 FT. HORIZONTAL  
 ON PROFILE, 1 IN. = 10 FT. VERTICAL  
 GRADE LINE ON PROFILE IS SHOWN AS GRADE OF FINISHED ROAD.  
 GROSS LENGTH OF PROJECT: 3,421.79 FT. = 6.481 MI  
 NET LENGTH OF PROJECT: 3,421.79 FT. = 6.481 MI

STA. 3550+00 BEG. F OII-1(5)  
 STA. 3550+00 ON N.R.S. 240B

STA. 3692+17.9 END F OII-1(5)  
 STA. 132+62.3 END C 19-0054-13



NOTICE TO BIDDERS  
 IT IS RECOMMENDED THAT BIDDERS ON THIS PROJECT GO OVER THE PLAN DETAILS WITH ONE OF THE FOLLOWING FIELD REPRESENTATIVES OF THIS DEPARTMENT:  
 E.W. OVIATT, CONSTRUCTION ENGINEER WRAY, COLO.  
 G.S. DANFORTH, RESIDENT ENGINEER WRAY, COLO.  
 Home Phone WRAY 90J

APPROVED:  
  
 CHIEF ENGINEER  
 DATE 10-19-54

APPROVED:  
 DISTRICT ENGINEER  
 DATE

FEDERAL ROAD DIVISION NO.	DISTRICT	PROJ. NO.	SHEET NO.	TOTAL SHEETS
9	COLORADO	FOII-1(5)	1	

Rev 11-24-54, Pr No 2, JCR

DISTRICT ENGR'S. COPY  
 RETURN TO DIST. & DESIGN  
 24

PROFILE	SURVEYED	BY	DATE
NOTE BOOK NO. 17272	PLOTTED	Geo. Dunlap D. M. Bailey	1-24 1-24
	GRADES CHECKED		
	M.S. NOTED		
	STRUCTURE NOTATIONS CH'ED		

AN	SURVEYED	BY	DATE
NOTE BOOK NO. 17272	PLOTTED	Geo. Dunlap Jr. F. E. Blaise	1-24 1-24
	ALIGNMENT CHECKED		
	RT. OF WAY CHECKED		

**NOTE:**  
 Alignment and Grades as shown are subject to modification during construction after approval by the Denver office.  
 Soil data shown on the plans is obtained from best available testing laboratory information. This information is shown for convenience of the Contractor and the Department does not guarantee the accuracy of these tests. If materials not conforming to the data on plans are encountered during construction the grading plan shown on plans will be modified where necessary to secure dense, stable embankments.  
 Fencing and Timber Guard Posts are tabulated on Sheet No. 3.

NW 1/4 Sec 34  
 T2N, R45W

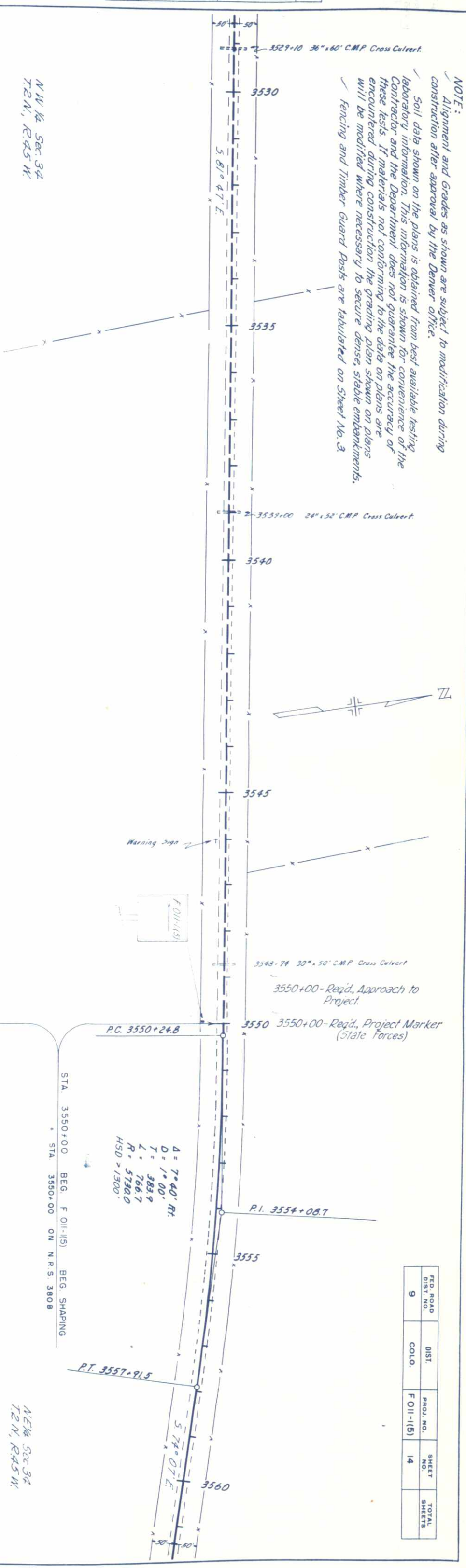
NE 1/4 Sec 34  
 T2N, R45W

#46 Oil Mot  
 46A A-2-4(0)  
 L.L. N.V.  
 P.I. N.P.  
 %200 29.0  
 C.B.R. 30.4  
 #46B A-2-4(0)  
 L.L. N.V.  
 P.I. N.P.  
 %200 20.0  
 C.B.R. 13.1

#47 Oil Mot  
 47A A-2-6(0)  
 L.L. 40.2  
 P.I. 20.2  
 %200 17.0  
 C.B.R. 9.4  
 #47B A-2-4(0)  
 L.L. N.V.  
 P.I. N.P.  
 %200 20.0  
 C.B.R. 13.1

#48 Oil Mot  
 48A A-2-4(0)  
 L.L. 40.2  
 P.I. 20.2  
 %200 17.0  
 C.B.R. 9.4  
 #48B A-2-4(0)  
 L.L. N.V.  
 P.I. N.P.  
 %200 20.0  
 C.B.R. 13.1

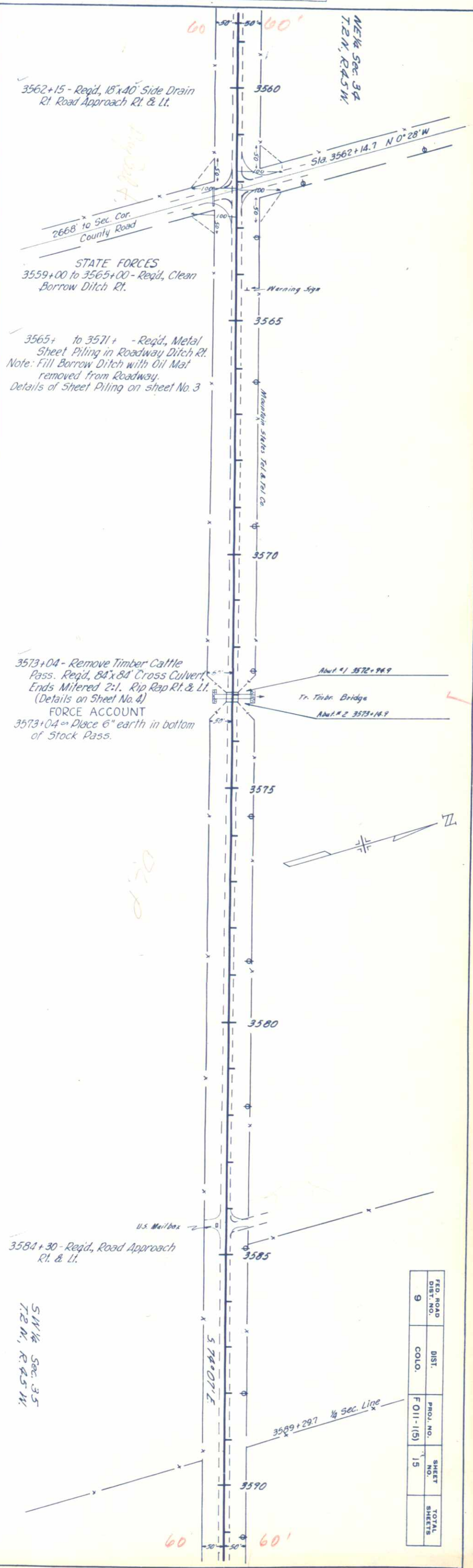
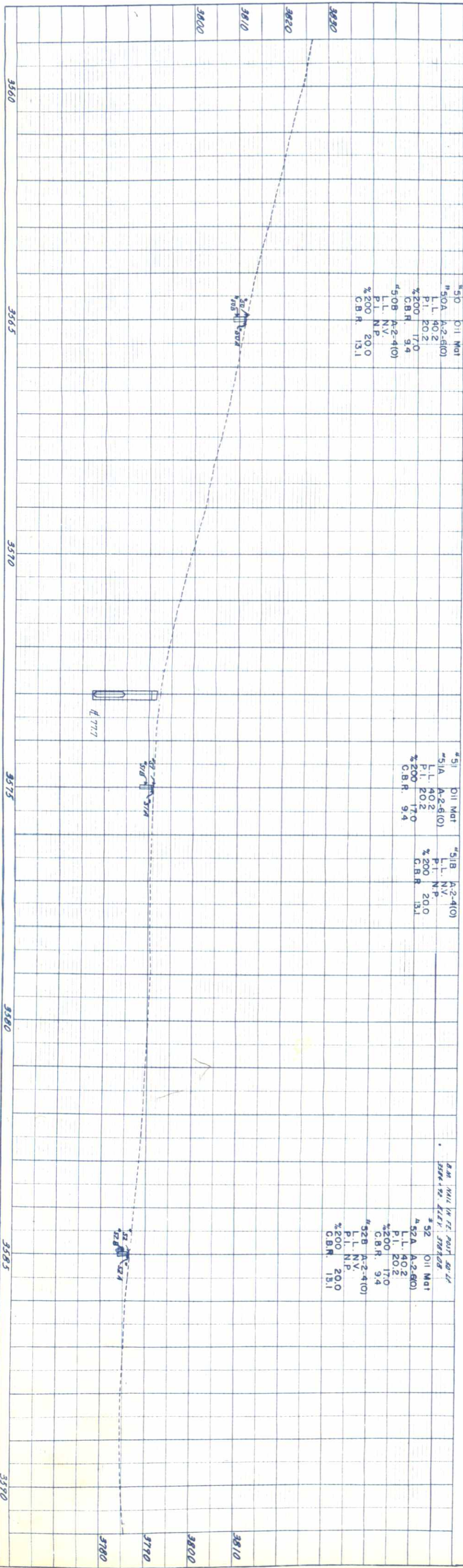
#49 Oil Mot  
 49A A-2-6(0)  
 L.L. 40.2  
 P.I. 20.2  
 %200 17.0  
 C.B.R. 9.4  
 #49B A-2-4(0)  
 L.L. N.V.  
 P.I. N.P.  
 %200 20.0  
 C.B.R. 13.1



FED. ROAD DIST. NO.	DIST. COLO.	PROJ. NO.	SHEET NO.	TOTAL SHEETS
9		F 011-1(5)	14	

PROFILE	SURVEYED BY D. M. Kelly
NOTE BOOK NO. 7971	GRADES CHECKED E. E. Blaser
	ALIGNMENT CHECKED
	RT. OF WAY CHECKED

F	SURVEYED BY D. M. Kelly	DATE 1-22-58
NOTE BOOK NO. 7971	GRADES CHECKED E. E. Blaser	
	ALIGNMENT CHECKED	
	RT. OF WAY CHECKED	



3562+15 - Req'd, 18"x40" Side Drain  
Rt Road Approach Rt. & Lt.

STATE FORCES  
3559+00 to 3565+00 - Req'd, Clean  
Borrow Ditch Rt.

3565+ to 3571+ - Req'd, Metal  
Sheet Piling in Roadway Ditch Rt.  
Note: Fill Borrow Ditch with Oil Mat  
removed from Roadway.  
Details of Sheet Piling on sheet No. 3

3573+04 - Remove Timber Cattle  
Pass. Req'd, 84"x84" Cross Culvert,  
Ends Mitered 2:1. Rip Rap Rt. & Lt.  
(Details on Sheet No. 4)  
FORCE ACCOUNT  
3573+04 - Place 6" earth in bottom  
of Stock Pass.

3584+30 - Req'd, Road Approach  
Rt. & Lt.

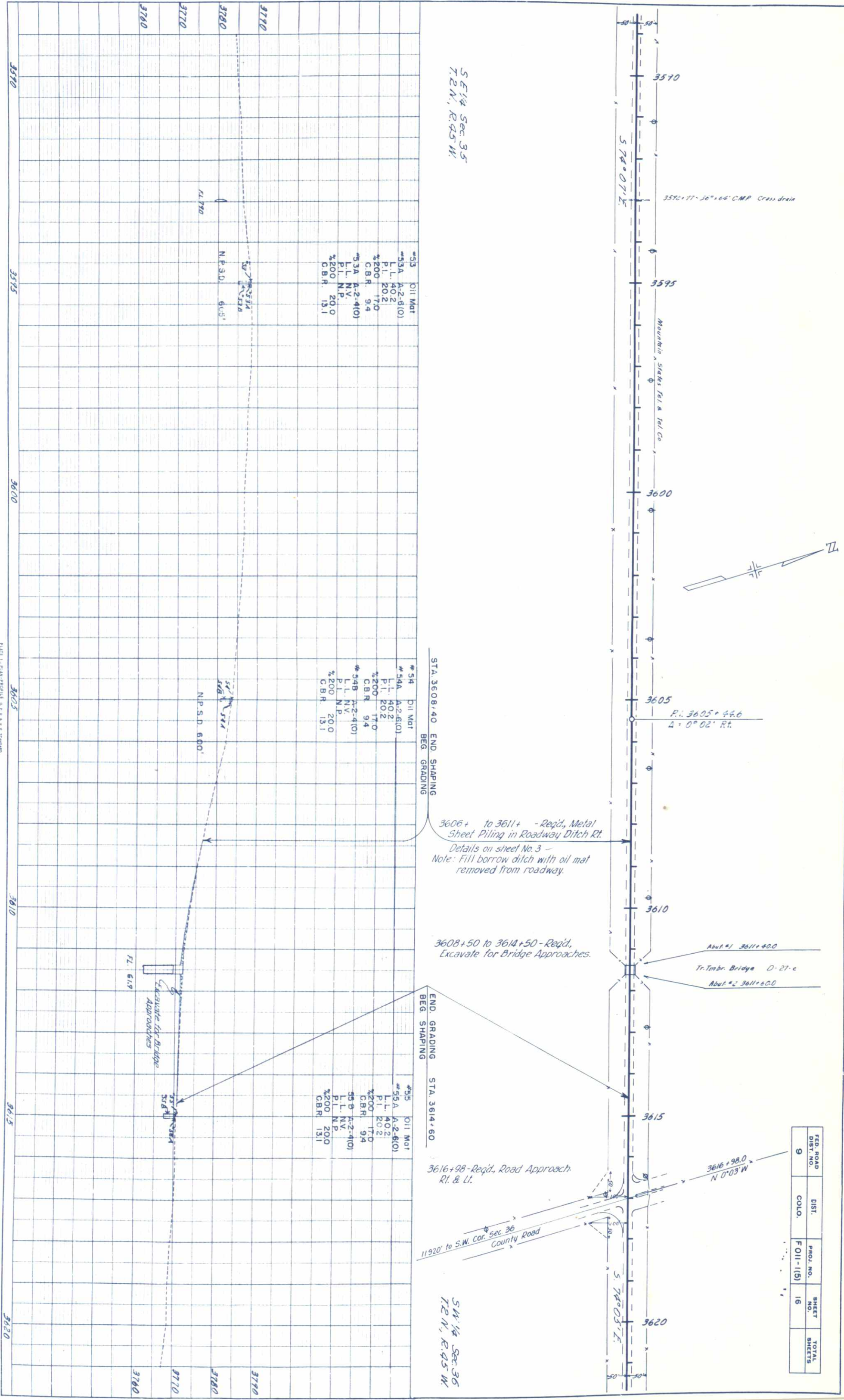
S 1/4 Sec. 35  
T 2 N., R. 45 W.

FED. ROAD DIST. NO.	DIST.	PROJ. NO.	SHEET NO.	TOTAL SHEETS
9	COLO.	F 011-1(5)	15	

PLATE 1 - PLAN PROFILE OF R. AND E. SHIMMERS

PROFILE	SURVEYED	BY	DATE
NOTE BOOK	PLOTTED	Geo. D. L. J.	1-27
NO. 1797	GRADES CHECKED	D. M. H. J.	2-24
	STRUCTURE NOTAT NS CHKD.		

PLAN	SURVEYED	BY	DATE
NOTE BOOK	PLOTTED	Geo. D. L. J.	1-27
NO. 1797	ALIGNMENT CHECKED	D. M. H. J.	2-24
	RT. OF WAY CHECKED		



SE 1/4 Sec 35  
T2N, R45W

STA. 3608.40 END SHAPING  
BEG GRADING

3606+ to 3611+ - Req'd, Metal Sheet Piling in Roadway Ditch Rt.  
Details on sheet No. 3 -  
Note: Fill borrow ditch with oil mat removed from roadway.

3608+50 to 3614+50 - Req'd, Excavate for Bridge Approaches.

END SHAPING  
BEG GRADING

STA. 3614+60

3616+98 - Req'd, Road Approach Rt. & Lt.

SW 1/4 Sec 36  
T2N, R45W

#53 Oil Mat

#53A	A-2-6(1)
L.L.	40.2
P.I.	20.2
%200	17.0
C.B.R.	9.4

#53A A-2-4(1)

L.L.	N.V.
P.I.	N.P.
%200	20.0
C.B.R.	13.1

#54 Oil Mat

#54A	A-2-6(1)
L.L.	40.2
P.I.	20.2
%200	17.0
C.B.R.	9.4

#54B A-2-4(1)

L.L.	N.V.
P.I.	N.P.
%200	20.0
C.B.R.	13.1

#55 Oil Mat

#55A	A-2-6(1)
L.L.	40.2
P.I.	20.2
%200	17.0
C.B.R.	9.4

#55B A-2-4(1)

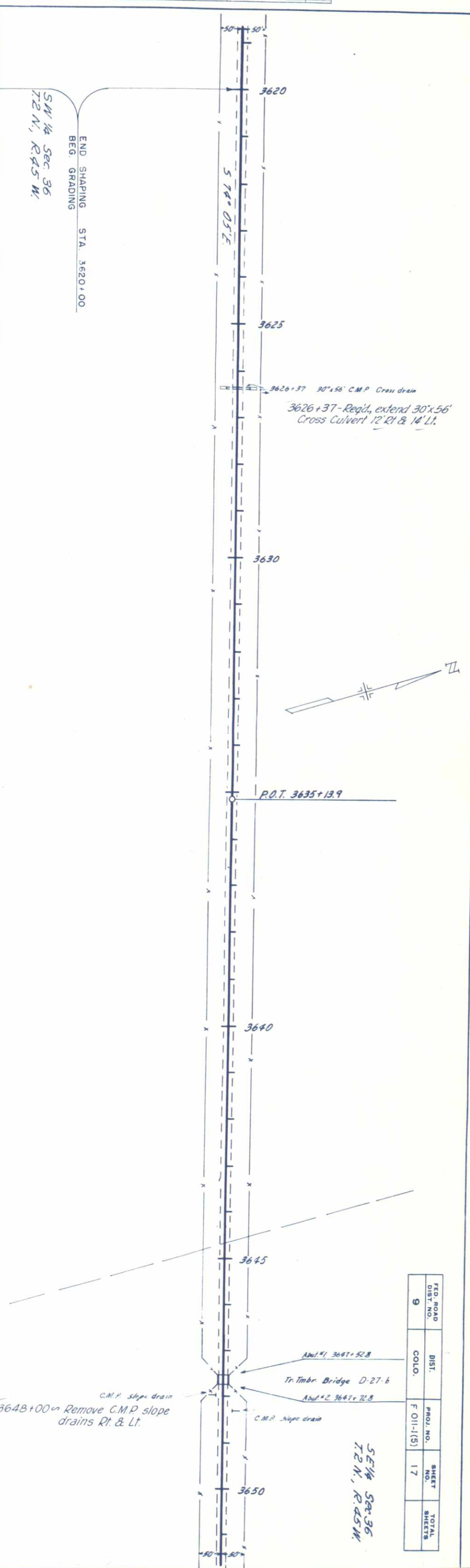
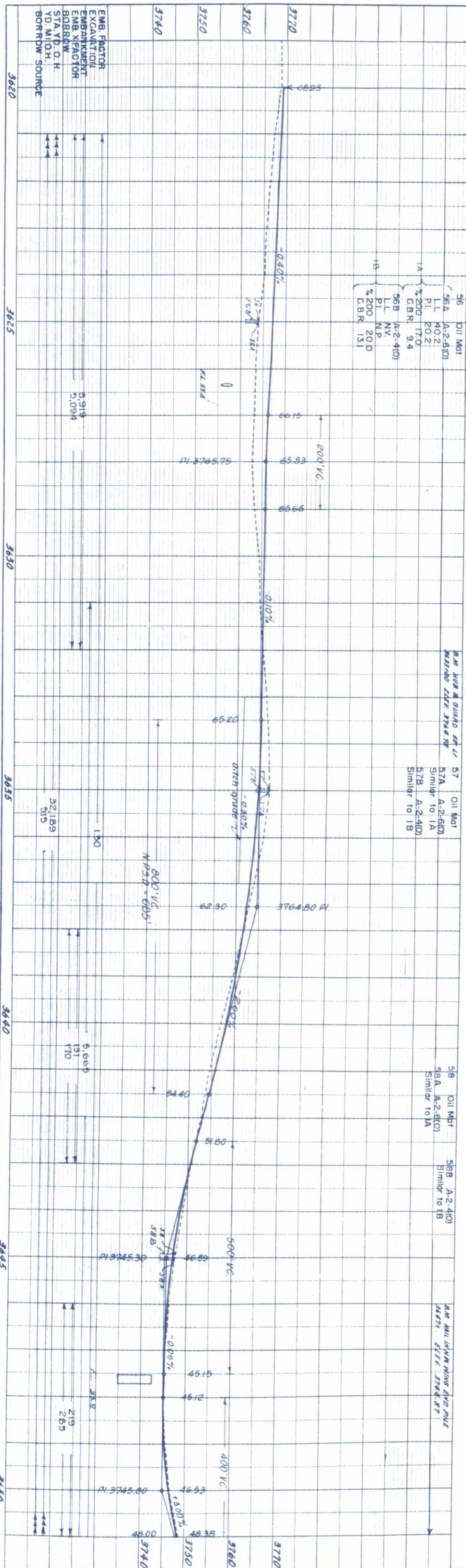
L.L.	N.V.
P.I.	N.P.
%200	20.0
C.B.R.	13.1

FED. ROAD DIST. NO.	DIST.	PROJ. NO.	SHEET NO.	TOTAL SHEETS
9	COLO.	FOII-1(5)	16	

PART 1 - PLAN PROFILE OF R. & E. STATIONS

PROFILE	SURVEYED	BY	DATE
NOTE BOOK	PLOTTED	By <i>Dee Deady</i>	1-28
NO. 1797	GRADES CHECKED	<i>D. Woodley</i>	1-28
1797	STRUCTURE NOTAT'NS CHKD.		

AN	SURVEYED	BY	DATE
NOTE BOOK	PLOTTED	<i>Geo. Deady Jr.</i>	1-28
NO. 1797	ALIGNMENT CHECKED	<i>E. F. Gleier</i>	1-28
1797	RT. OF WAY CHECKED		



FED. ROAD DIST. NO.	DIST. COLO.	PROJ. NO.	SHEET NO.	TOTAL SHEETS
9		F 011-1(5)	17	

PART 1 - PLAN PROFILE OF ROAD THROUGH

PROFILE	SURVEYED	BY	DATE
NOTE BOOK	PLOTTED	Geo. J. ...	1-28
NO. 1797	GRADES CHECKED	H. ...	1-28
1797	B. M.S. NOTED		
	STRUCTURE NOTATIONS CHECKED		

AN	SURVEYED	BY	DATE
BOOK	PLOTTED	Geo. J. ...	1-28
NO. 1797	ALIGNMENT CHECKED	S. F. ...	1-28
1797	RT. OF WAY CHECKED		



519 Oil Mat  
 59A A-2-4(0)  
 L.L. N.V.  
 P.L. N.P.  
 %200 32  
 C.B.R. 30.4

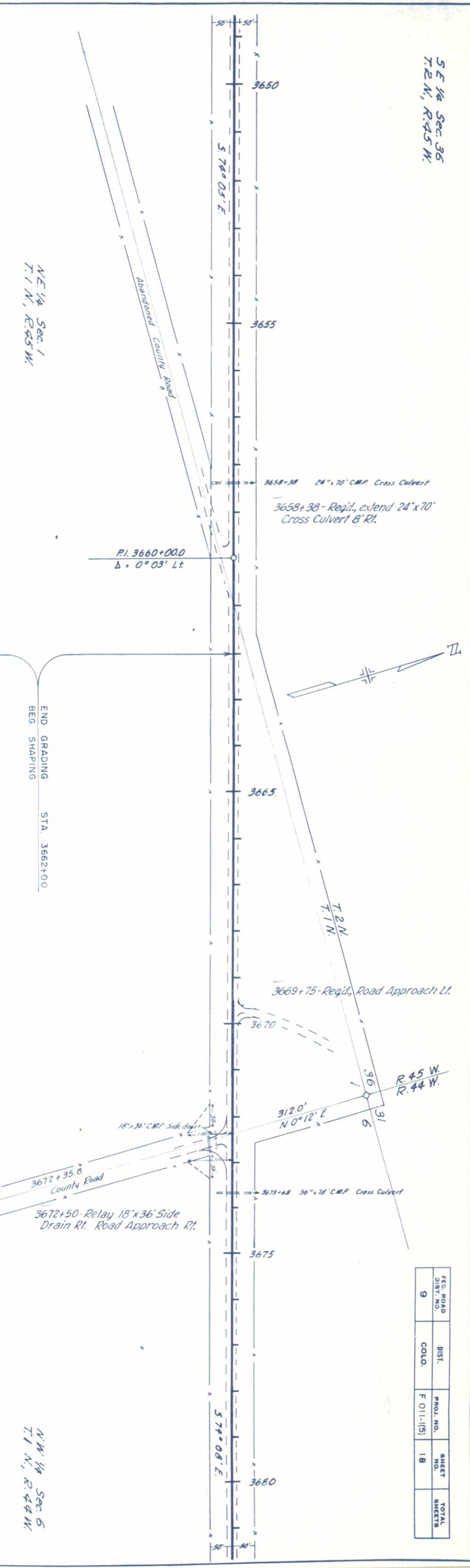
60 Oil Mat  
 60A A-2-4(0)  
 Similar to 59A

61 Oil Mat  
 61A A-2-4(0)  
 Similar to 59A

NE 1/4 Sec. 1  
 T. 1 N., R. 45 W.

NW 1/4 Sec. 6  
 T. 1 N., R. 44 W.

END GRADING  
 STA. 3662+00  
 BEG. SHAPING



SE 1/4 Sec. 36  
 T. 2 N., R. 45 W.

FED. ROAD DIST. NO.	DIST. COLO.	PROJ. NO.	SHEET NO.	TOTAL SHEETS
9		F 011-(5)	18	

DATE: 1-28-28

NW 1/4 Sec. 6  
T. 1 N., R. 94 W.

SURVEYED	BY	DATE
PLOTTED	Geo. DeLoach Jr.	1-28-58
ALIGNMENT CHECKED	E. E. Gleason	1-28-58
RT. OF WAY CHECKED		
NOTE BOOK NO. 1797		
1797		

PROFILER	BY	DATE
SURVEYED	Geo. DeLoach Jr.	1-28-58
PLOTTED	E. E. Gleason	1-28-58
GRADES CHECKED		
NOTE BOOK NO. 1797		
1797		



END SHAPING STA. 3686+00  
BEG. GRADING

STA. 3703+20 END GRADING  
BEG. SHAPING

62 Oil Mat  
62A A-4(3)  
P.I. 26.3  
%200 51  
C.B.R. 11.0

63 Oil Mat  
63A A-4(3)  
Similar to 62A

64 Oil Mat  
64A A-4(3)  
Similar to 62A

65 Oil Mat  
65A A-2-8(10)  
L.L. 40.2  
P.I. 20.2  
%200 T70  
C.B.R. 9.4  
65B A-4(3)  
Similar to 62A

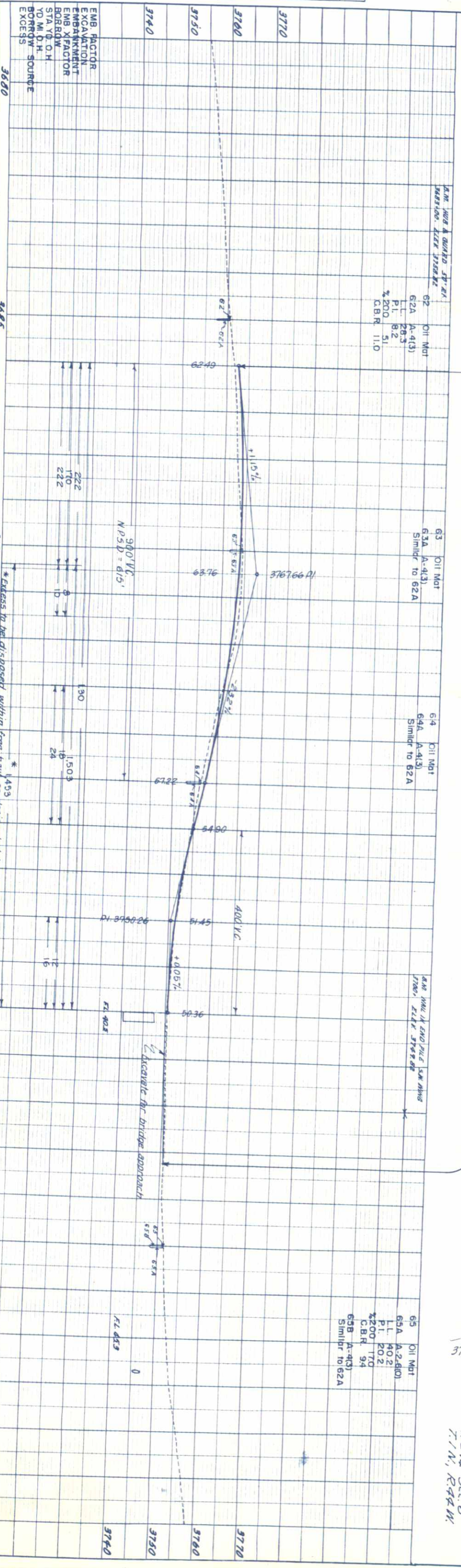


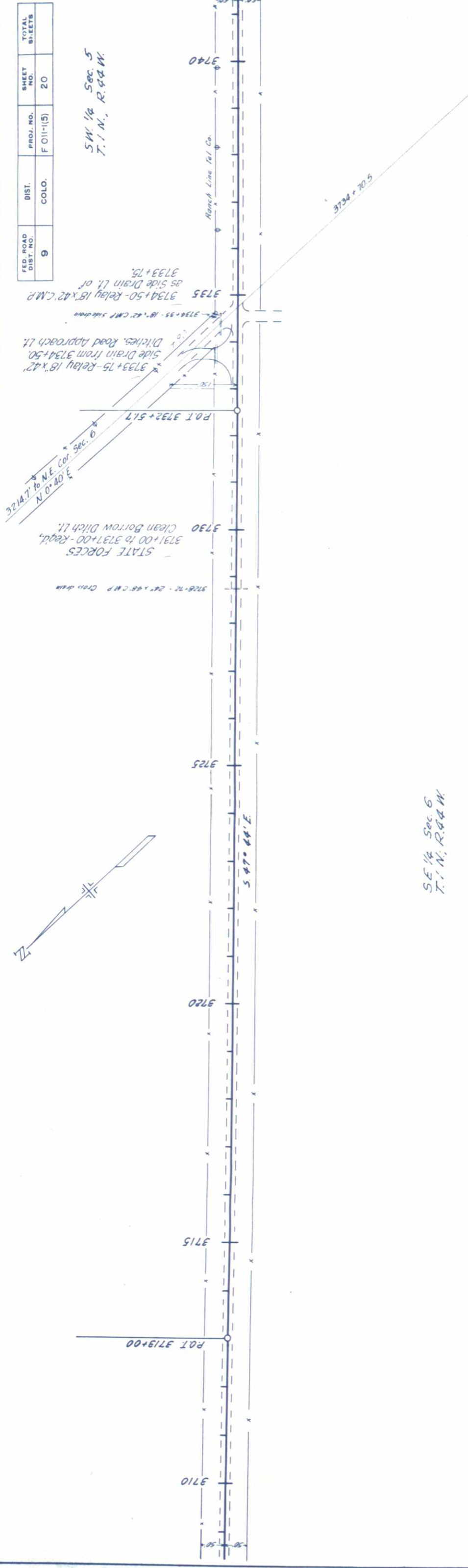
PLATE 1 - PLAN PROFILE OF ROAD

FED. ROAD DIST. NO.	DIST.	PROJ. NO.	SHEET NO.	TOTAL SHEETS
9	COLO.	F 011-1(5)	19	

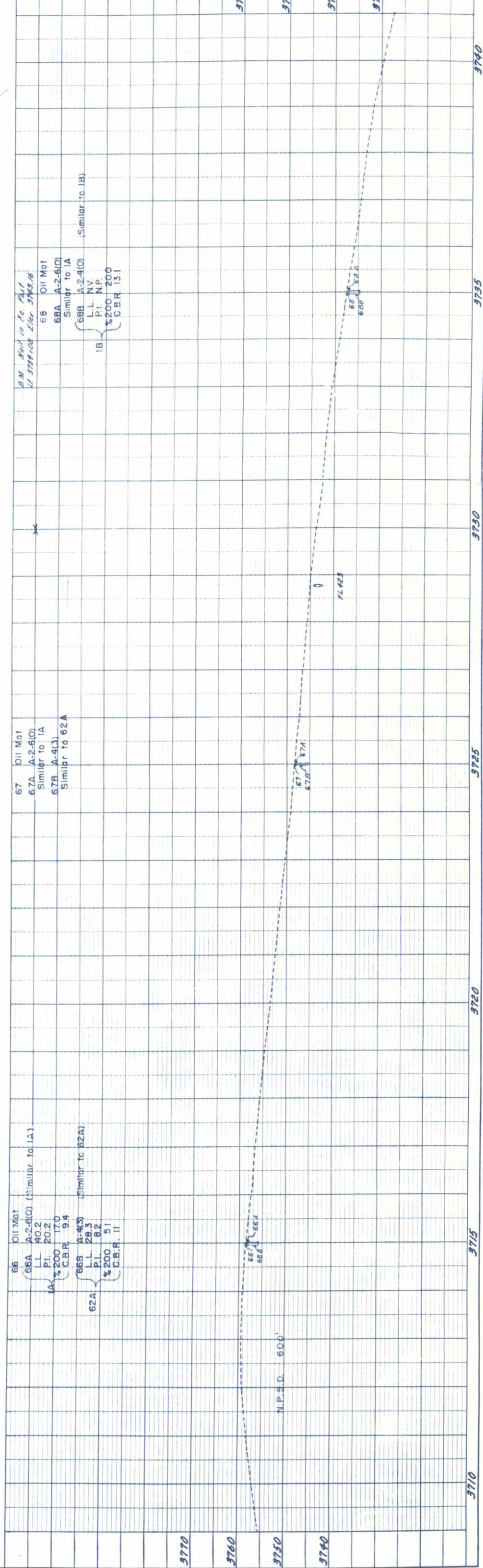
NE 1/4 Sec. 6  
T. 1 N., R. 94 W.

FED. ROAD DIST. NO.	DIST.	PROJ. NO.	SHEET NO.	TOTAL SHEETS
9	COLO.	F 011-15	20	

SW 1/4 Sec. 5  
T. 1 N., R. 44 W.



SE 1/4 Sec. 6  
T. 1 N., R. 44 W.



66 Oil Mat  
66A A-2-6(O) (Similar to 1A)  
L.L. 40.2  
P.I. 20.2  
1A %200 17.0  
C.B.R. 9.4  
66B A-4(3) (Similar to 62A)  
L.L. 28.3  
P.I. 8.2  
62A %200 51  
C.B.R. 11

67 Oil Mat  
67A A-2-6(O)  
Similar to 1A  
67B A-4(3)  
Similar to 62A

68 Oil Mat  
68A A-2-6(O)  
Similar to 1A  
68B A-2-4(O) (Similar to 1B)  
L.L. N.V.  
P.I. N.P.  
1B %200 200  
C.B.R. 13.1

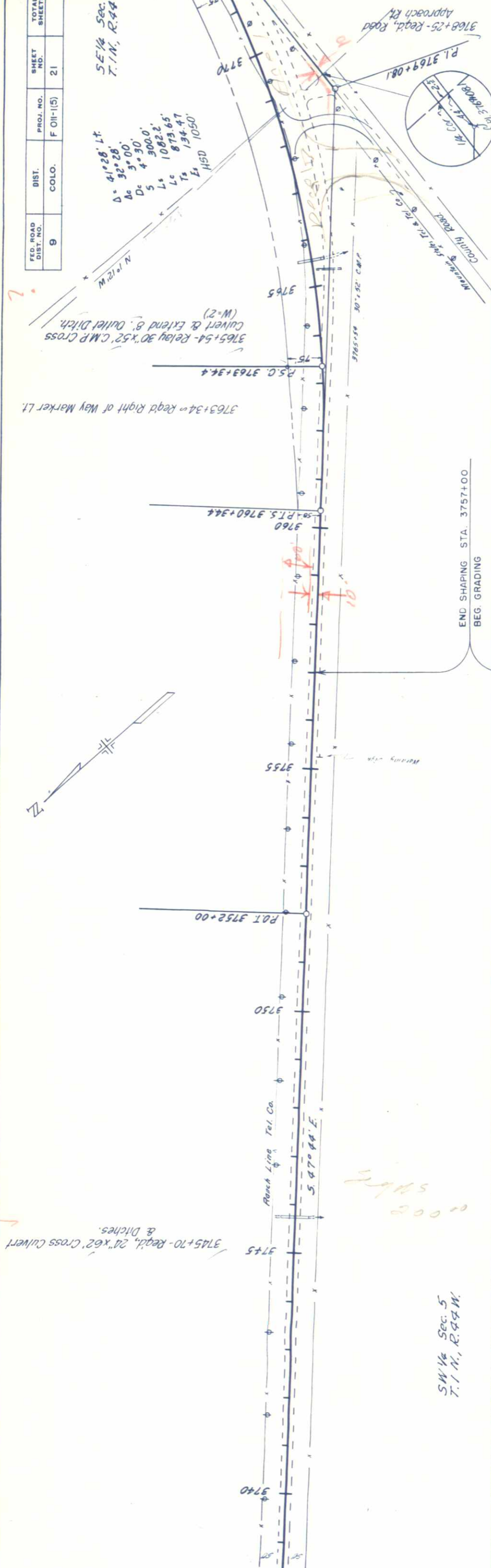
DATE	1/28
DESIGNED BY	D. MICHAEL
PLOTTED BY	L. S. S.
NOTE BOOK NO.	1797
MT. OF WAT. CHECKED	
DATE	1/28

DATE	1/28
DESIGNED BY	D. MICHAEL
PLOTTED BY	L. S. S.
NOTE BOOK NO.	1797
STRUCTURE NOTATIONS CHECKED	
DATE	1/28

FED. ROAD DIST. NO.	DIST.	PROJ. NO.	SHEET NO.	TOTAL SHEETS
9	COLO.	F 011-1(5)	21	21

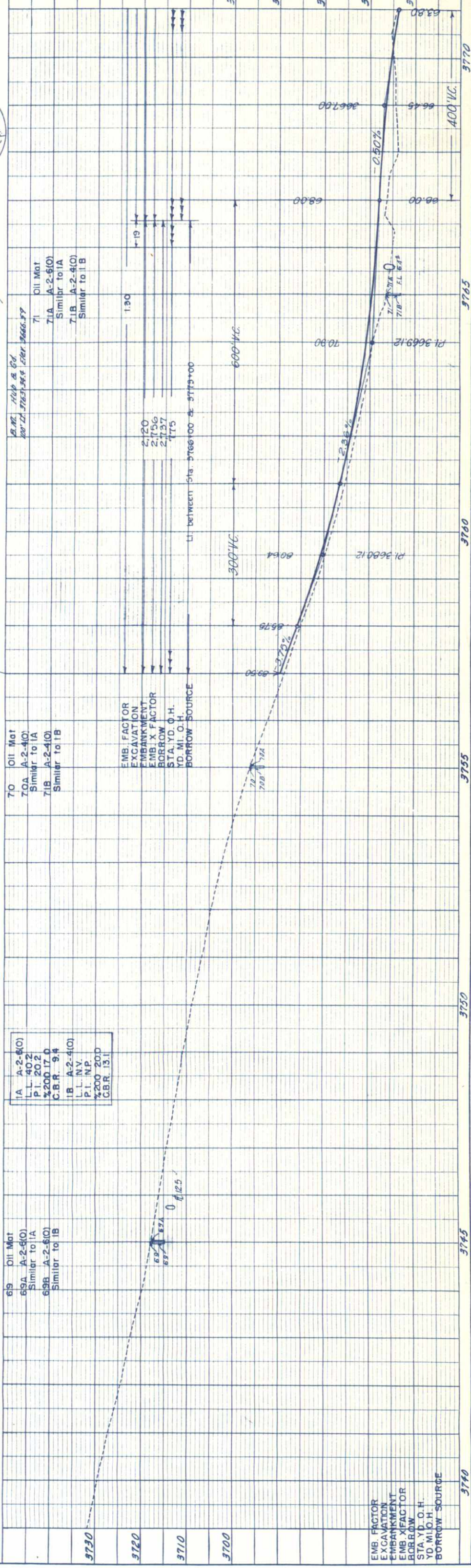
SE 1/4 Sec. 5  
T. 1 N., R. 44 W.

Δ = 41°28' 11"  
Δc = 32°28'  
Dc = 3°30'  
Ds = 4°30'  
S = 300.0'  
Lc = 1082.2'  
Ls = 873.65'  
Ts = 134.47'  
Es = HSD 1050'



SW 1/4 Sec. 5  
T. 1 N., R. 44 W.

END SHAPING STA. 3757+00  
BEG. GRADING



1A	A-2-6(O)
L.L.	40.2
P.I.	20.2
%200	17.0
C.B.R.	9.4
1B	A-2-4(O)
L.L.	N.P.
P.I.	N.P.
%200	20.0
C.B.R.	13.1

69A	A-2-6(O)
Similar to 1A	
69B	A-2-6(O)
Similar to 1B	

70A	A-2-4(O)
Similar to 1A	
70B	A-2-4(O)
Similar to 1B	

71	Oil Mat
71A	A-2-6(O)
Similar to 1A	
71B	A-2-4(O)
Similar to 1B	

EMB. FACTOR  
EXCAVATION  
EMBANKMENT  
EMB. X FACTOR  
BORROW  
STA. YD. O. H.  
YD. MI. O. H.  
BORROW SOURCE

EMB. FACTOR  
EXCAVATION  
EMBANKMENT  
EMB. X FACTOR  
BORROW  
STA. YD. O. H.  
YD. MI. O. H.  
BORROW SOURCE

EMB. FACTOR  
EXCAVATION  
EMBANKMENT  
EMB. X FACTOR  
BORROW  
STA. YD. O. H.  
YD. MI. O. H.  
BORROW SOURCE

DATE	1/27/72
BY	D. M. D. M. D.
CHECKED	F. E. S. I. C. E. T.
APPROVED	
NO. 17971	MT. OF WAY CHECKED
NO. 17971	ALIGNED CHECKED
NO. 17971	PLOTTED

DATE	1/27/72
BY	D. M. D. M. D.
CHECKED	F. E. S. I. C. E. T.
APPROVED	
NO. 17971	STRUCTURE NOTATIONS CHECKED
NO. 17971	GRADES CHECKED
NO. 17971	NOTED
NO. 17971	PLOTTED

FED. ROAD DIST. NO.	DIST.	PROJ. NO.	SHEET NO.	TOTAL SHEETS
9	COLO.	F 011-(5)	22	

SW 1/4 Sec 4  
T.1N., R.44W.

Δ 1°53' 11"  
D 1°00'  
T 94.2'  
L 188.3'  
R 5730'  
HSD > 1300'

3785+79-Reg'd, Extend 30'x52'  
Cross Culvert, 8'x11' & 10' LI  
Kip Kap at Outlet, Outlet Ditch.

3782+45-Reg'd, Road Approach LI

3781+60-Reg'd, Road Approach ET

3774+17-Reg'd, Right of Way Marker LI

3772+94.5 END N.R.S. 3808  
BEGIN N.R.S. 40



NE 1/4 Sec 8  
T.1N., R.44W.

DATE	1/27/72
DRAWN	E. F. BIRCH
CHECKED	
NOTED	
PLOTTED	
DATE	1/27/72
NO.	1797
NOTE BOOK	
ALIGNMENT CHECKED	
RT. OF WAY CHECKED	
SURVEYED	

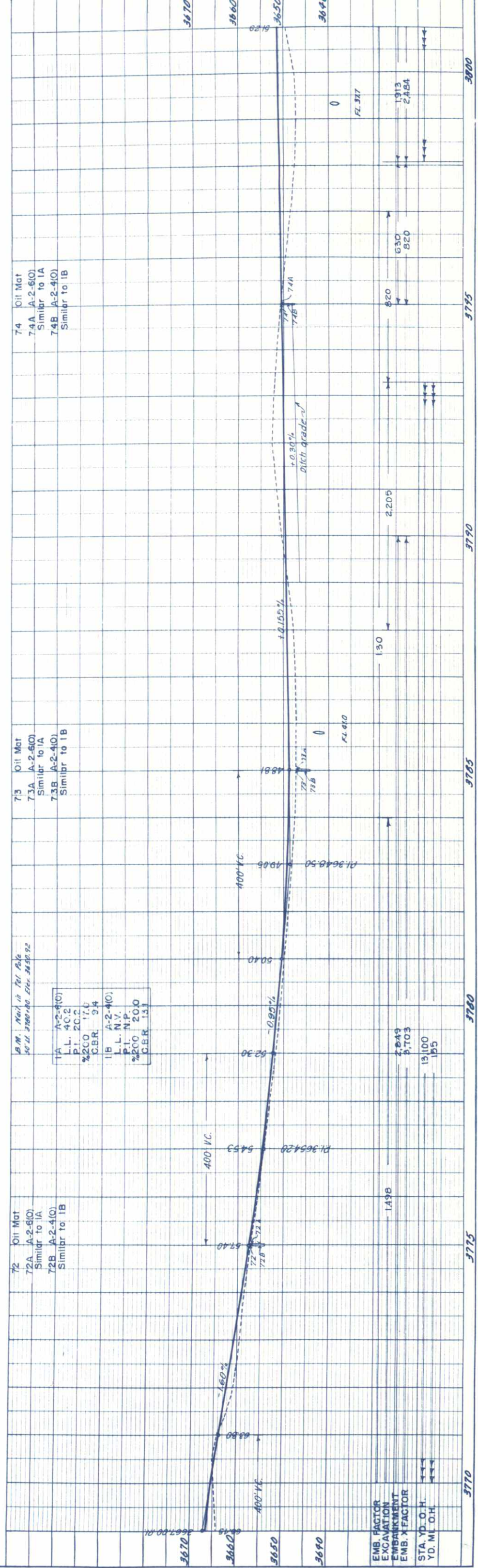
74 Oil Mat  
7.4A A-2-6(O)  
Similar to 1A  
7.4B A-2-4(O)  
Similar to 1B

73 Oil Mat  
7.3A A-2-6(O)  
Similar to 1A  
7.3B A-2-4(O)  
Similar to 1B

72 Oil Mat  
7.2A A-2-6(O)  
Similar to 1A  
7.2B A-2-4(O)  
Similar to 1B

B.M. Mark in Tel Pole  
50' LI 3780+80. Elev. 2652.92

1A	A-2-4(O)
L.I.	40.2
P.I.	20.2
%200	17.0
C.B.R.	9.4
1B	A-2-4(O)
L.I.	N.Y.
P.I.	N.P.
%200	20.0
C.B.R.	13.1



DATE	1/27/72
DRAWN	D. RIMMING
CHECKED	
NOTED	
PLOTTED	
DATE	1/27/72
NO.	1797
NOTE BOOK	
GRADES CHECKED	
STRUCTURE NOTATIONS CHECKED	
SURVEYED	

EMB. FACTOR  
EXCAVATION  
EMBANKMENT  
EMB. X FACTOR

STA. YD. O.H.  
YD. M. O.H.

3770

3775

3780

3785

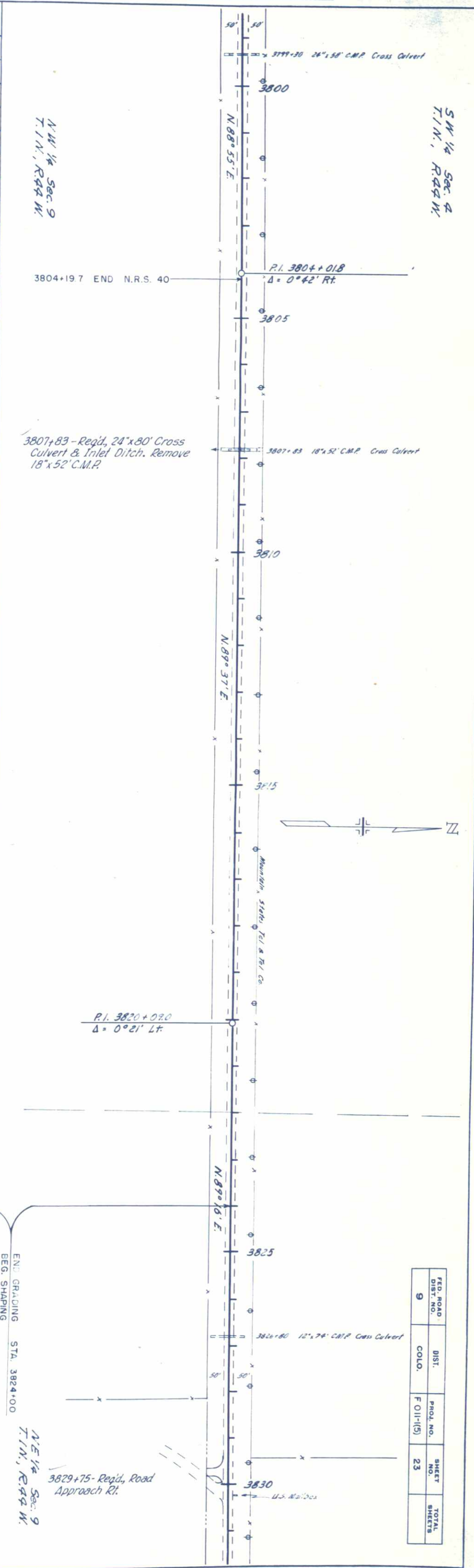
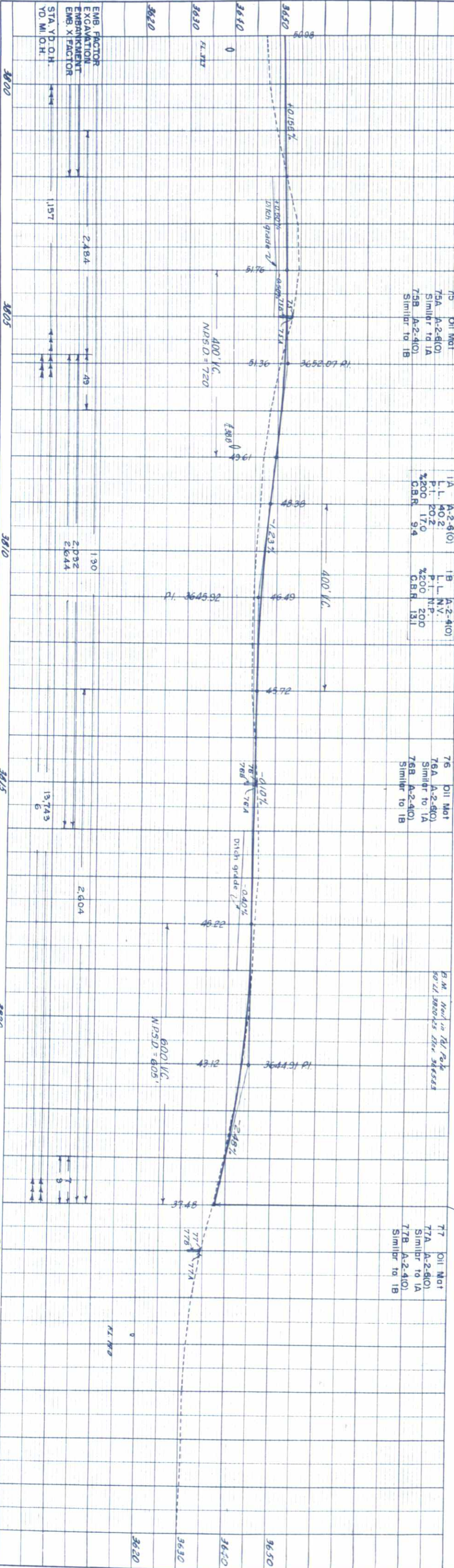
3790

3795

3800

PROFILE	SURVEYED	BY	DATE
	PLOTTED		
	GRADES CHECKED		
	B. M. S. NOTED		
	STRUCTURE NOTATIONS CHECKED		

BY	DATE
BY	DATE
BY	DATE

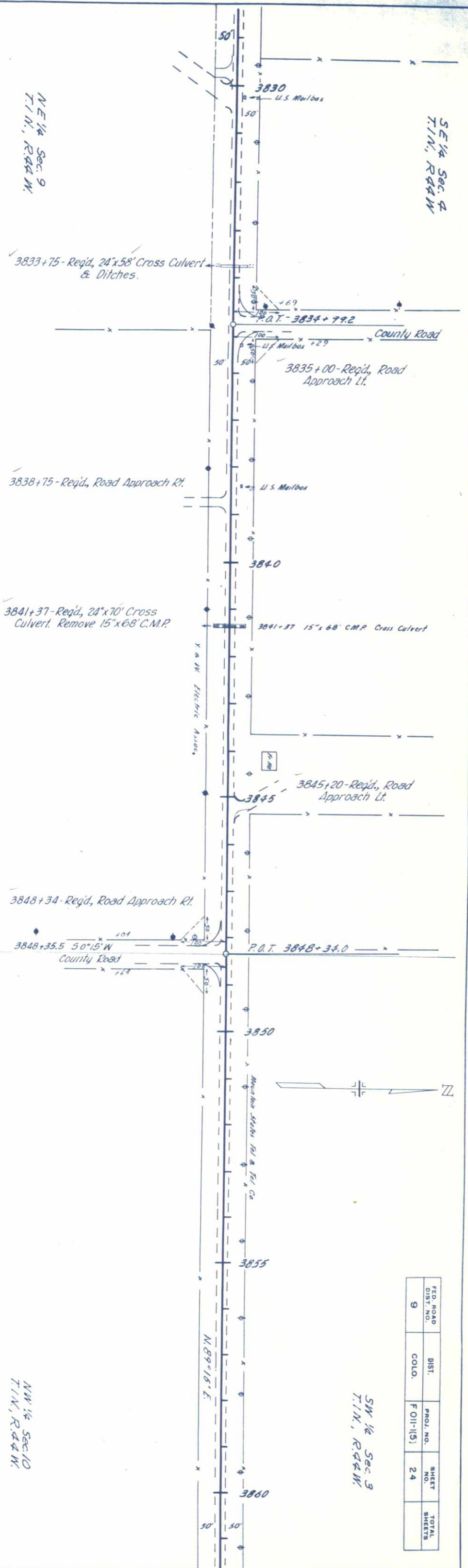
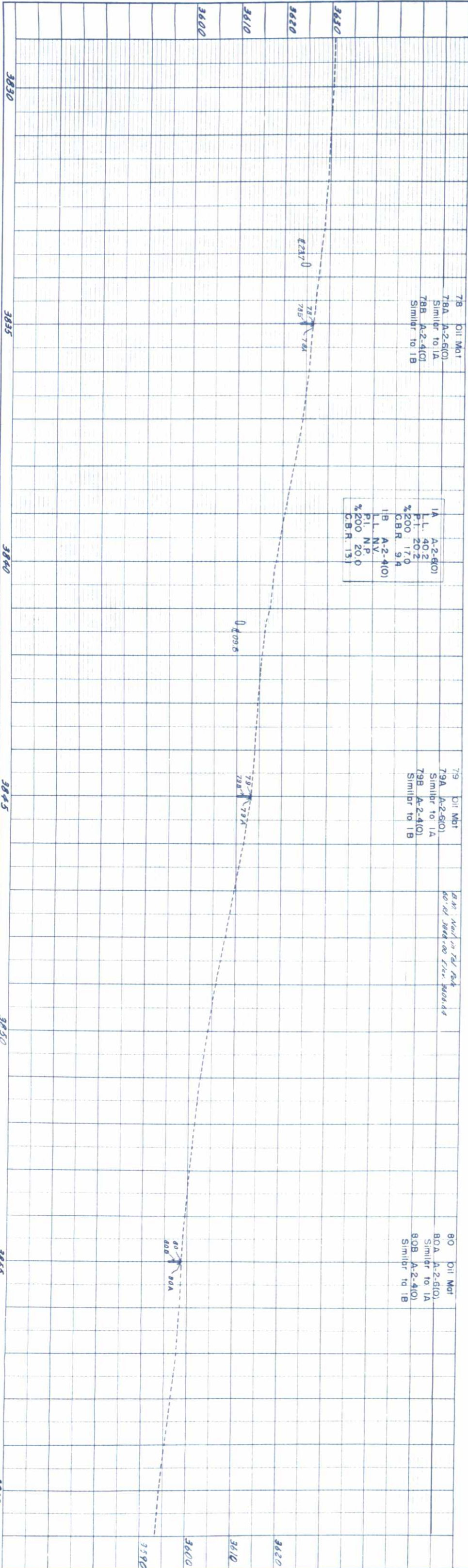


FED. ROAD DIST. NO.	DIST. COLO.	PROJ. NO.	SHEET NO.	TOTAL SHEETS
9		F 011-1(5)	23	

PLATE 1 - PLAN PROFILE & P.R.A.S. STATIONS

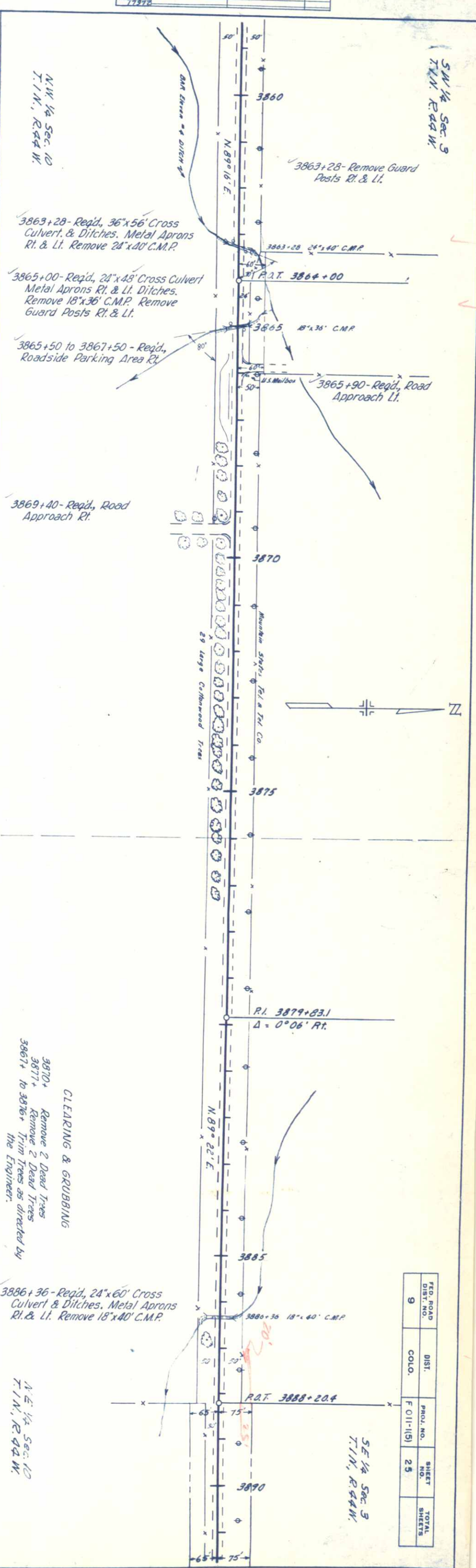
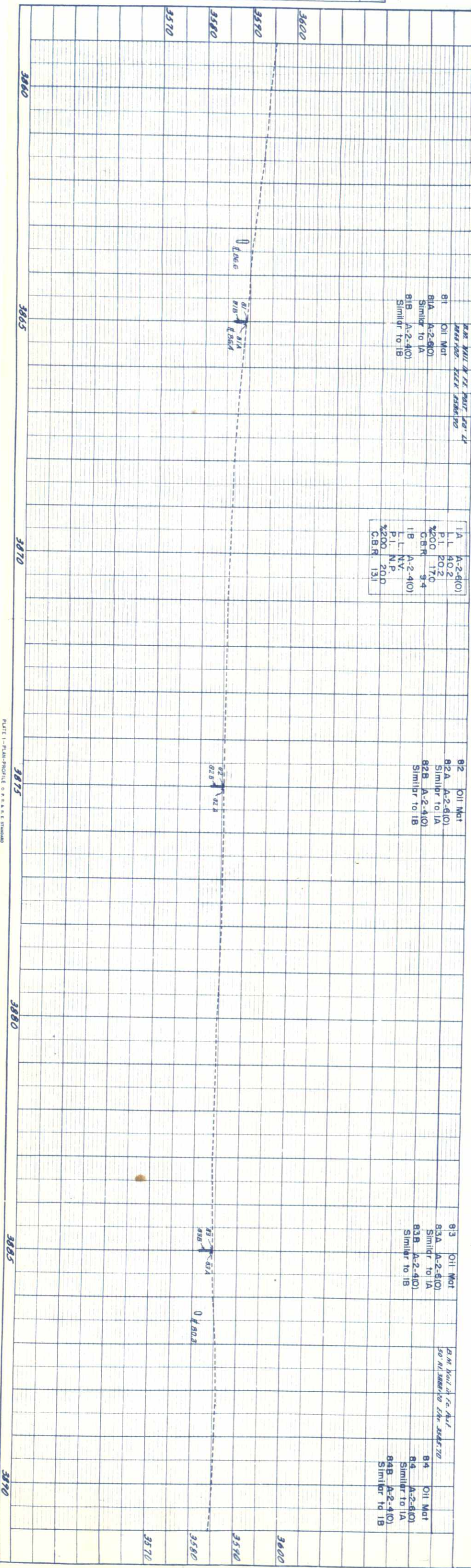
PROFILE	SURVEYED	BY	DATE
NOTE BOOK	PLOTTED	Geo. L. Smith	1-28
NO. 1797	GRADES CHECKED	D. Whetley	1-28
1797	STRUCTURE NOTATIONS CHECKED		

AN	SURVEYED	BY	DATE
NOTE BOOK	PLOTTED	Geo. L. Smith Jr.	1-28
NO. 1797	ALIGNMENT CHECKED	G. F. Blaser	1-28-28
1797	RT. OF WAY CHECKED		



FEED ROAD DIST. NO.	DIST.	PROJ. NO.	SHEET NO.	TOTAL SHEETS
9	COLO.	F 011-19	24	

REPRODUCED FROM THE ORIGINAL DRAWING

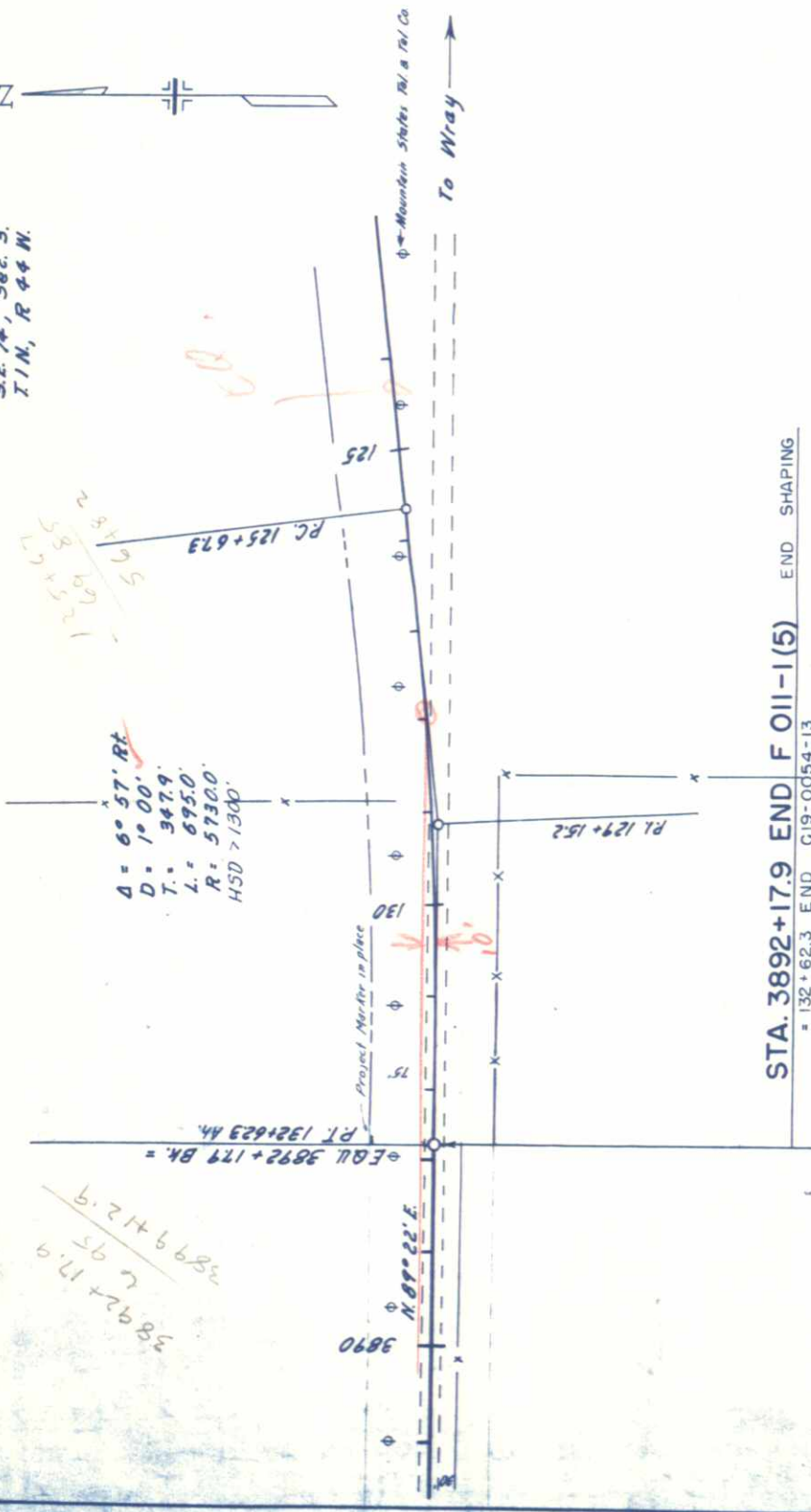


FED. ROAD DIST. NO.	DIST.	PROJ. NO.	SHEET NO.	TOTAL SHEETS
9	COLO.	F 011-151	25	

FED. ROAD DIST. NO.	DIST.	PROJ. NO.	SHEET NO.	TOTAL SHEETS
9	COLO.	F 011-(5)	26	



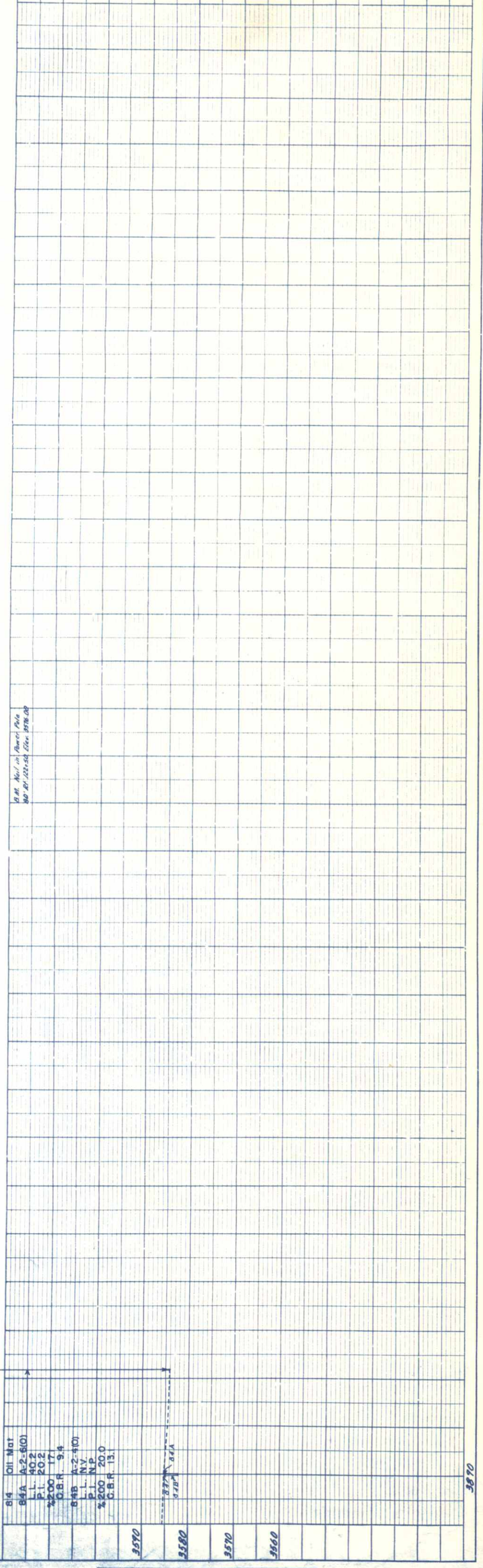
S.E. 1/4, Sec. 3, T.1N., R.44W.



$\Delta = 6^\circ 57' \text{ RE}$   
 $D = 1^\circ 00'$   
 $T = 347.9$   
 $L = 695.0$   
 $R = 5730.0$   
 $HSD > 1300'$

STA. 3892+17.9 END F 011-1(5) END SHAPING  
 = 132+62.3 END C19-0054-13

N.E. 1/4, Sec. 10, T.1N., R.44W.



DATE	BY	CHECKED	DATE

DATE	BY	CHECKED	DATE