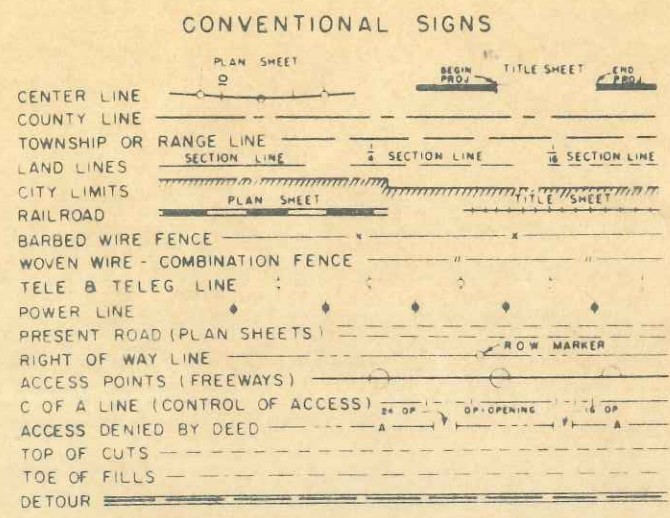


DEPARTMENT OF HIGHWAYS STATE OF COLORADO

FEDERAL ROAD REGION NO.	DIVISION	PROJECT NO.	SHEET NO.
9	COLORADO	F 012-2 (10)	1

RIGHT OF WAY Sixth & Simms



PLAN AND PROFILE OF PROPOSED FEDERAL AID PROJECT NO. F 012-2(10) STATE HIGHWAY NO. 182 JEFFERSON COUNTY RIGHT OF WAY

Information Obtained from Available County Records
Length of Right Of Way 0.739 Miles
Scale: Detail Map 1"=100'
Ownership Map 1"=200'

INDEX OF SHEETS

SHEET NO.	1	Title Sheet
	2	Tabulation Sheet
	3 & 3-A	Detail Map
	4	Ownership Map

REVISIONS		
3-19-65	Add Sheet No. 3-A	D.I.
3-19-65	Ext. End of Proj.	D.I.
3-19-65	Mitigate of R.O.W.	D.I.
4-7-65	Extend R.O.W. at end	D.I.

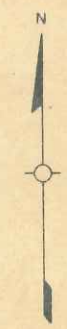
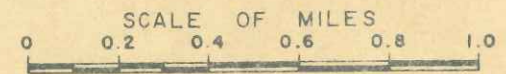
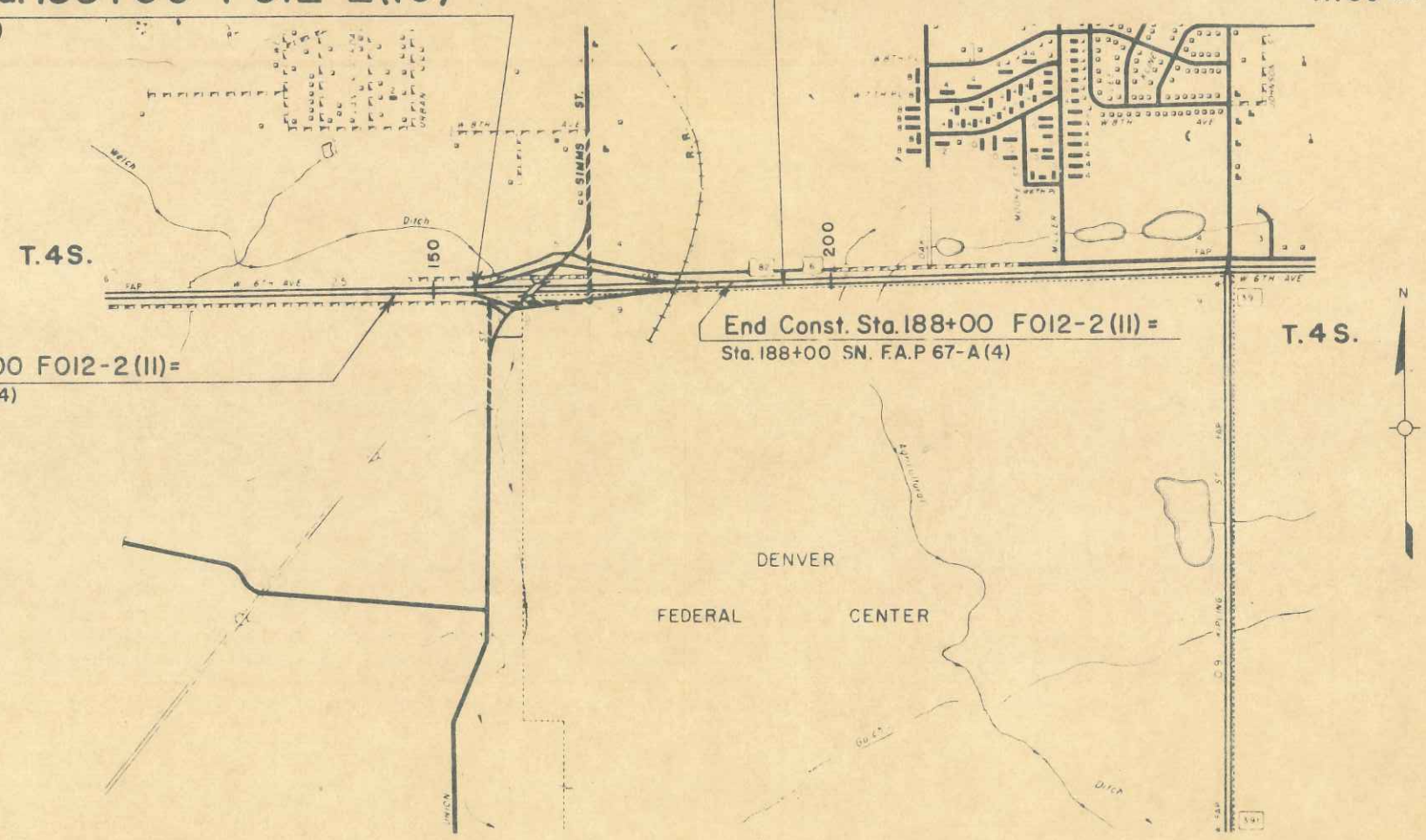
Note: Plans and descriptions on this project calculated and checked by field forces.

Begin R.O.W. Sta. 155+00 F012-2(10) =
Sta. 155+00 SN. F.A.P. 67-A(4)

End R.O.W. Sta. 195+60 F012-2(10) =
Sta. 195+60 SN. F.A.P. 67-A(4) R. 69 W.

Begin Const. Sta. 145+00 F012-2(II) =
Sta. 145+00 SN. F.A.P. 67-A(4)

End Const. Sta. 188+00 F012-2(II) =
Sta. 188+00 SN. F.A.P. 67-A(4)



R. O. W. TABULATION OF PROPERTIES IN JEFFERSON COUNTY S.H. No. 182 PROJ. F 012-2 (10)

FEDERAL ROAD DIVISION NO.	DISTRICT	PROJECT NO.	SHEET NO.
8	COLORADO	F 012-2 (10)	2

RIGHT OF WAY Sixth & Simms

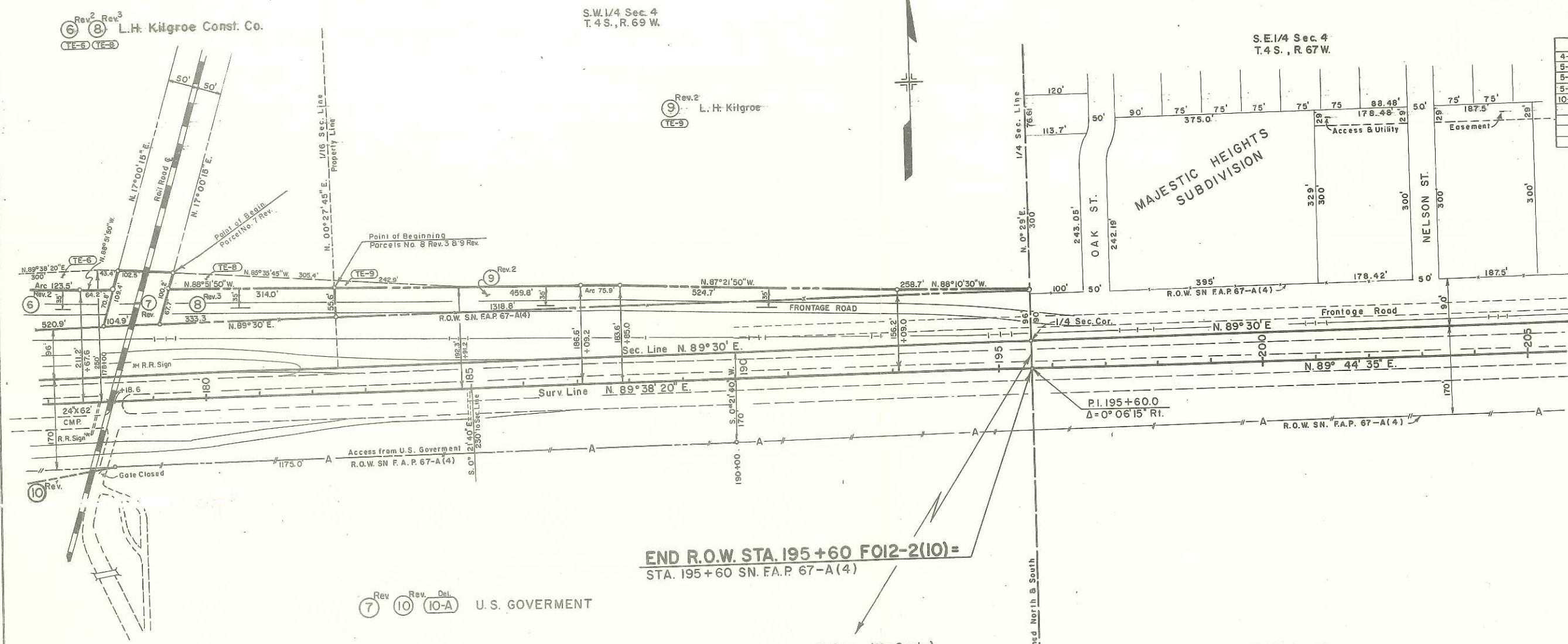
PARCEL NO.	OWNER	ADDRESS	LOCATION	AREA IN ACRES			PURCHASE DATA					REMARKS	NO.
				PARCEL	TO BE ACQUIRED	REMAINDER	LAND	IMPROV'M'TS	DAMAGE	MISC.	TOTAL		
			T.4 S., R.69W.										
			Section 5										
1	Trade Inc.		SW.1/4 of the SE.1/4	0.037	0.037	150 Lt.							
2	Leonard S. Zall		SE.1/4 of the SE.1/4	6.103	6.103	10 Lt.							
3	Lewis E. Crowder Robert A. Crowder E.D. Crowder		SE.1/4 of the SE.1/4	0.444	0.444	8.0 Lt.							
			Section 4										
4 ^{Rev.}	Sam Y. West 1/2 Int. Robert M. & Verna Doreen West 1/2 Int.		SW.1/4 of the SW.1/4	0.437	0.437	16 Lt.						Remainder for Parcels N ^o 4 & 5	4 ^{Rev.}
4-A ^{Rev.}	Deleted												4-A ^{Rev.}
5 ^{Rev.}	Sam Y. West 1/2 Int. Robert M. & Verna Doreen West 1/2 Int.		SW.1/4 of the SW.1/4	1.584	1.584								5 ^{Rev.}
6 ^{Rev.}	L.H. Kilgroe Const. Co.		SW.1/4 of the SW.1/4	0.931	0.931	3.2 Lt.							6 ^{Rev.}
7 ^{Rev.}	United States Government		SW.1/4 of the SW.1/4	0.241	0.241								7 ^{Rev.}
8 ^{Rev.}	L.H. Kilgroe Const. Co.		SW.1/4 of the SW.1/4	0.447	0.447	.54 Lt.							8 ^{Rev.}
9 ^{Rev.}	L. H. Kilgroe		E.1/2 of the S.W.1/4	0.918	0.918	79.1 Lt.							9 ^{Rev.}
10 ^{Rev.}	United States Government		NW.1/4 of N.W.1/4 Sec. 9	1.170	1.170								10 ^{Rev.}
10-A	Deleted												
11	St. Claire Okie Hayden 1/2 Int. John O. Hayden 1/2 Int.		Section 8 NE.1/4 of the NE.1/4	1.699	1.699	2.8 Rt. 8.9 Rt.						Remainder north of frontage road Remainder south of frontage road Remainders for Parcels N ^o 11 & 11-A, 11-B	11
11-A	St. Claire Okie Hayden 1/2 Int. John O. Hayden 1/2 Int.		NE.1/4 of the NE.1/4	0.679	0.679	SEE 11							11-A
12	St. Claire Okie Hayden 1/2 Int. John O. Hayden 1/2 Int.		NE.1/4 of the NE.1/4	0.880	0.880	82 Rt.							12
E-1	Leonard S. Zall		Section 5 SE.1/4 of the SE.1/4	0.324	0.324								E-1
11-B	ST. CLAIRE OKIE HAYDEN 1/2 INT JOHN O. HAYDEN 1/2 INT		NE.1/4 NE.1/4 SEC. 8	0.223	0.223	SEE 11							

REVISIONS		
2/65	Rev. Par. N ^o 4-A	D-1
3/23/65	Rev. Parc. 6, 7, 8, 9, 10	D-1
3/23/65	Add Parcel No. 10-A	D-1
4-14-65	Delete 9 Rev. - Rev 8 Rev.	D-1
5-7-65	Add & Rev. Par. 9 Rev.	D-1
5-7-65	Rev. 6 Rev. 8 Rev. 2	D-1
5-7-65	Rev. 4-A Rev. & 5, 4	D-1
1-20-66	Rev. 4-A Rev. 2	D-1
2-19-66	Delete Par. 4A Rev 3	D-1
2-9-68	Rev. 11 A	LB
2-9-68	Add Parcel 11-B	GF
10-8-74	Del. 10A	GM

FEDERAL ROAD REGION NO.	DISTRICT	PROJ. NO.	SHEET NO.	TOTAL SHEETS
9	COLORADO	F012-2(10)	3-A	

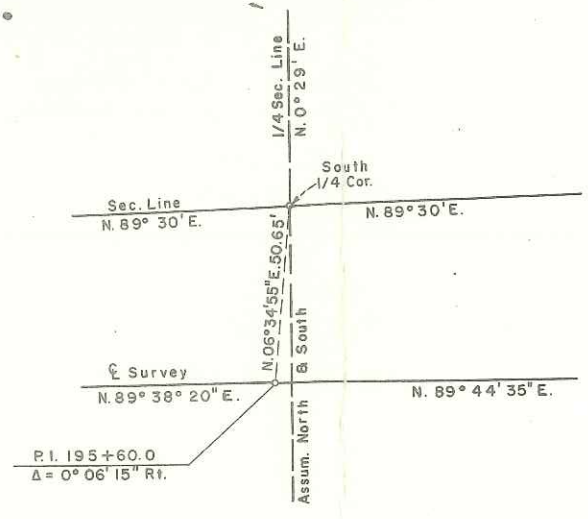
RIGHT OF WAY Sixth & Simms

Revisions		
4-14-65	Delete 9 Rev. - Rev. 8 Rev.	DJF
5-7-65	Add 8 Rev. For 9 Rev.	D-I
5-7-65	Add TE-6, TE-8, TE-9	D-I
5-7-65	Rev. 6 Rev., 8 Rev. 2	D-I
10-9-74	Del. 10A	GM



**END R.O.W. STA. 195+60 F012-2(10)=
STA. 195+60 SN. F.A.P. 67-A(4)**

DETAIL (No Scale)



N.W. 1/4 Sec. 9
T. 4 S., R. 69 W.

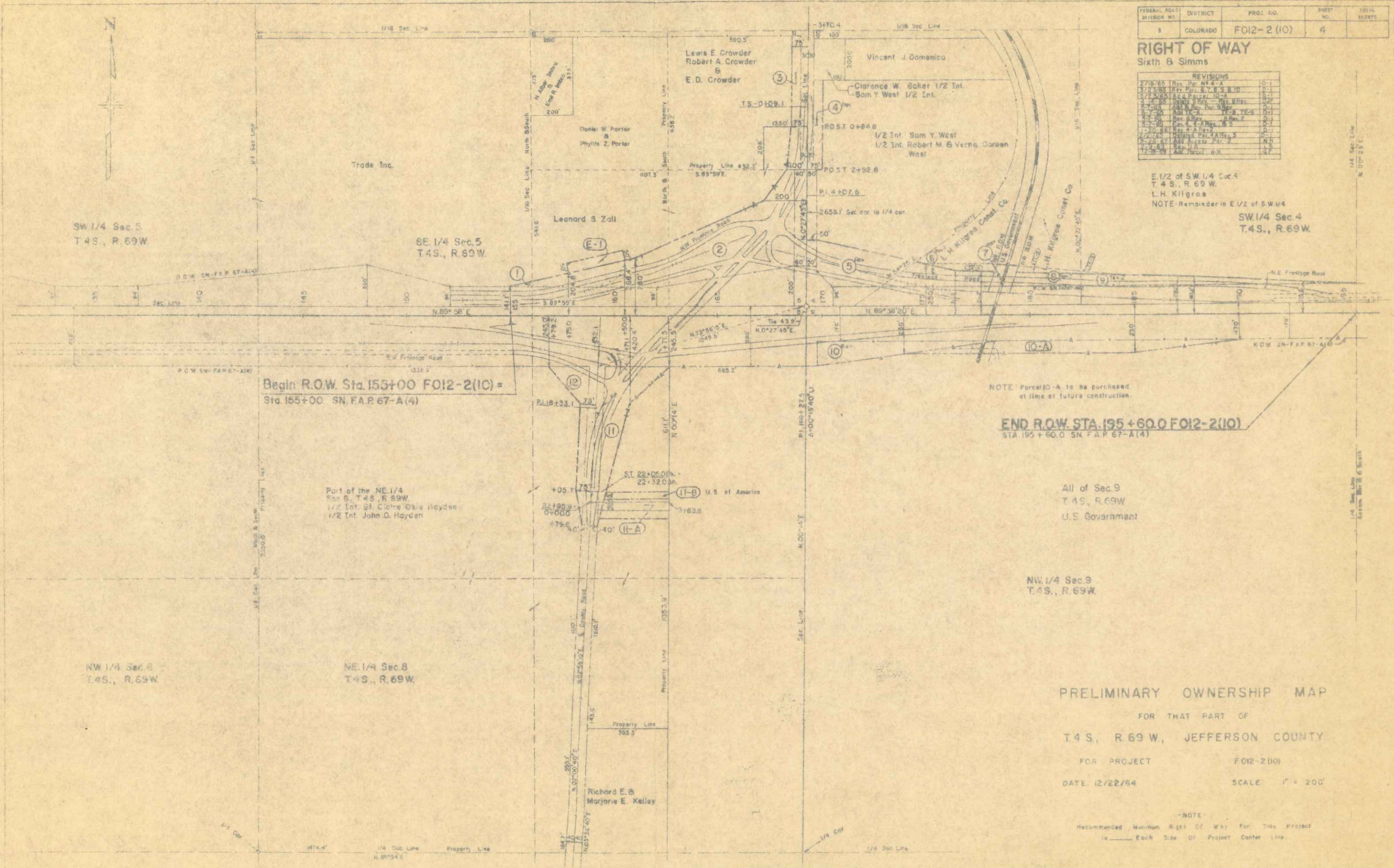
N.E. 1/4 Sec. 9
T. 4 S., R. 69 W.

FEDERAL ROAD DIVISION NO.	DISTRICT	PROJ. NO.	SHEET NO.	TOTAL SHEETS
1	COLORADO	FO12-2 (10)	4	

RIGHT OF WAY
 Sixth & Simms

REVISIONS		
2/10/65	Rev. Per. No. 4-A	0-1
3/23/65	Rev. Per. No. 5-B, 6-10	0-1
3/23/65	Rev. Per. No. 10-A	0-1
7/23/65	Rev. Per. No. 11-A	0-1
7/23/65	Rev. Per. No. 12-A	0-1
7/23/65	Rev. Per. No. 13-A	0-1
7/23/65	Rev. Per. No. 14-A	0-1
7/23/65	Rev. Per. No. 15-A	0-1
7/23/65	Rev. Per. No. 16-A	0-1
7/23/65	Rev. Per. No. 17-A	0-1
7/23/65	Rev. Per. No. 18-A	0-1
7/23/65	Rev. Per. No. 19-A	0-1
7/23/65	Rev. Per. No. 20-A	0-1
7/23/65	Rev. Per. No. 21-A	0-1
7/23/65	Rev. Per. No. 22-A	0-1
7/23/65	Rev. Per. No. 23-A	0-1
7/23/65	Rev. Per. No. 24-A	0-1
7/23/65	Rev. Per. No. 25-A	0-1
7/23/65	Rev. Per. No. 26-A	0-1
7/23/65	Rev. Per. No. 27-A	0-1
7/23/65	Rev. Per. No. 28-A	0-1
7/23/65	Rev. Per. No. 29-A	0-1
7/23/65	Rev. Per. No. 30-A	0-1

E 1/2 of SW 1/4 Sec. 4
 T. 4 S., R. 69 W.
 L.H. Kilgroe
 NOTE: Remainder in E 1/2 of SW 1/4
 SW 1/4 Sec. 4
 T. 4 S., R. 69 W.



Begin R.O.W. Sta. 155+00 FO12-2(10) =
 Sta. 155+00 SN. F.A.P. 67-A(4)

NOTE: Parcel 10-A to be purchased at time of future construction.

END R.O.W. STA. 195+60.0 FO12-2(10)
 STA. 195+60.0 SN. F.A.P. 67-A(4)

All of Sec. 9
 T. 4 S., R. 69 W.
 U.S. Government

NW 1/4 Sec. 9
 T. 4 S., R. 69 W.

PRELIMINARY OWNERSHIP MAP
 FOR THAT PART OF
 T. 4 S., R. 69 W., JEFFERSON COUNTY
 FOR PROJECT FO12-2(10)
 DATE: 12/22/64 SCALE: 1" = 200'

NOTE:
 Recommended Minimum Right of Way For This Project
 is _____ Each Side Of Project Center Line.