

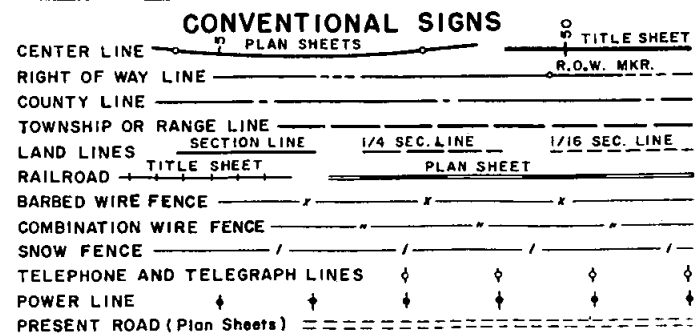
FEDERAL ROAD REGION NO.	DIVISION	PROJ. NO.	SHEET NO.	TOTAL SHEETS
9	COLORADO	F 013-1(13)	1	

COLORADO DEPARTMENT OF HIGHWAYS

PLAN AND PROFILE OF PROPOSED FEDERAL AID PROJECT NO. F 013-1(13) STATE HIGHWAY NO. 102 ADAMS & ARAPAHOE COUNTY

INDEX OF SHEETS

SHEET NO. 1	SKETCH MAP, TITLE PAGE & TABULATION OF LENGTH & DESIGN DATA.
2	TYPICAL CROSS SECTION AND GENERAL NOTES.
3-4	SUMMARY OF APPROXIMATE QUANTITIES.
5	SUMMARY OF EARTHWORK QUANTITIES, DETAIL FOR HEADWALL REMOVAL & DETAILS OF DEFLECTION DYKE.
6	SURFACING PLAN, TABULATION OF TIMBER GUARD POSTS & SKETCH MAP OF MATERIAL PIT.
7	SUB-BASE MATERIAL PLAN, TABULATION OF FENCING REQUIREMENTS & PLANT MIXED ASPHALTIC SHOULDER ROLL & SKETCH MAP OF MATERIAL PIT.
8-9	LIST OF STRUCTURE QUANTITIES.
10	SUPERELEVATION & WIDENING OF CURVES
11	CROWNED HIGHWAYS M - 1 - D
12	APPROACH ROADS, FLARING, CUT SLOPE TREATMENT, BRIDGE & CREST WIDENING M - 2 - A
13-14	LETTERS AND FIGURES FOR STRUCTURE NO'S. M - 5 - A
15	CONSTRUCTION TRAFFIC SIGNS M - 6 - B
16	IDENTIFICATION SIGNS M - 6 - C
17	DITCH TYPES M - 13 - A
18	BACKFILL AROUND STRUCTURES M - 16 - A
19	SINGLE AND DOUBLE CONCRETE BOX CULVERTS M - 46 - C
20	WINGWALLS FOR CONCRETE BOX CULVERTS M - 46 - E
21	REINFORCED CONCRETE PIPE M - 52 - A
22-23	MULTIPLE PLATE CULVERT DETAILS M - 57 - A
24	WIRE FENCES AND GATES M - 76 - A
25	PICKET SNOW FENCE M - 77 - A
26	TIMBER GUARD POSTS M - 92 - A
27-37	EMBANKMENT PROTECTORS M - 93 - A
38-111	ALIGNMENT PLAN & PROFILE SHEETS. CROSS SECTION SHEETS.



TABULATION OF LENGTH & DESIGN DATA

STATION	DESCRIPTION	ROADWAY	
		24' RDWY Lin. Ft.	36' RDWY Lin. Ft.
1248+00.0	BEG. PROJ. NO. F 013-1(13)= STA. 1248+00 END PROJ. NO. F 013-1(11)	4,618.0	
1294+18.0	BEG. BRIDGE BADGER CREEK STR. NO. F-21-E	162.5	
1295+80.5	END BRIDGE		
1309+00.0	BEG. 36 FT. WIDTH		3,400.0
1343+00.0	END 36 FT. WIDTH		
1451+49.1Bk 1442+96.9Ah	EQUATION	10,849.1	
1509+93.7Bk 1510+00.0Ah	EQUATION	6,696.8	
1539+35.0	END PROJ. F 013-1(13)= STA. 1539+35.0 on PWA-351-D BEG. BRIDGE COAL CREEK STR. NO. F-21-D	2,935.0	
TOTALS		26,580.9	3,400.0

SUMMARY		
	Lin. Ft.	Miles
ROADWAY — 24' Width	26,580.9	5.034
ROADWAY — 36' Width	3,400.0	0.644
TOTALS (Net & Gross Length)	29,980.9	5.678

DESIGN DATA	
Maximum Grade	6.00%
Maximum Degree of Curvature	0°30'
Minimum N.P.S.D. (Horizontal)	> 1,300'
Minimum N.P.S.D. (Vertical)	475'
Maximum Design Speed	60 M.P.H.

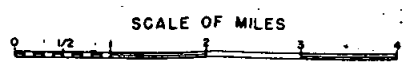
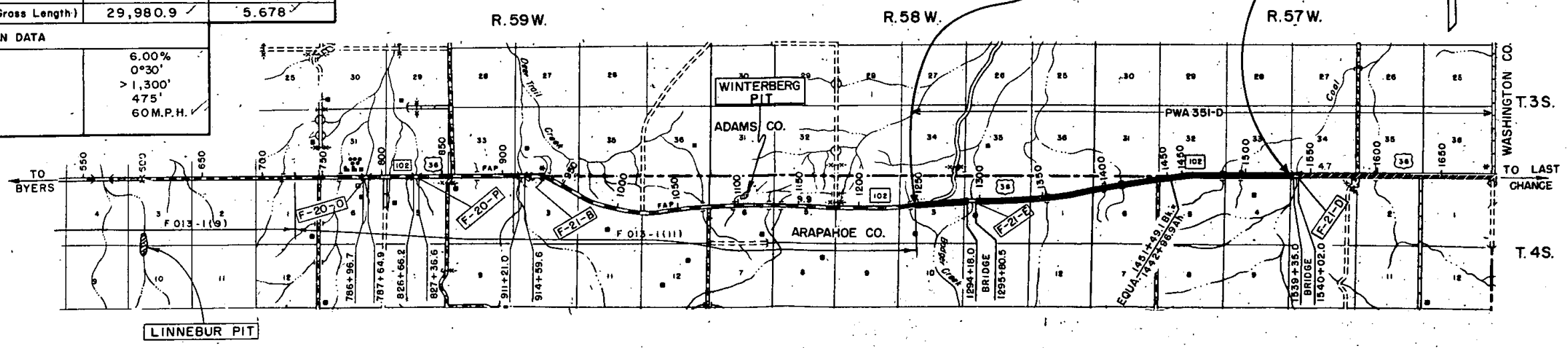
SCALES OF ORIGINAL DRAWINGS.

ON PLAN. 1 IN. = 100 FT.
ON PROFILE. 1 IN. = 100 FT. HORIZONTAL
1 IN. = 10 FT. VERTICAL

GRADE LINE ON PROFILE IS SHOWN AS GRADE OF FINISHED ROAD
GROSS LENGTH OF PROJECT = 29,980.9 Lin. Ft. = 5.678 Miles
NET LENGTH OF PROJECT

STA. 1539+35.0 END PROJ. NO. F 013-1(13)=
STA. 1539+35.0 on PWA 351-D

STA. 1248+00.0 BEG. PROJ. NO. F 013-1(13)=
STA. 1248+00 END PROJ. NO. F 013-1(11)



SEE SPECIAL PROVISIONS FOR NOTICE TO BIDDERS

COLORADO
DEPARTMENT OF HIGHWAYS

APPROVED: *Mark T. Wetmore* 8-21-62
CHIEF ENGINEER DATE

DEPARTMENT OF COMMERCE
BUREAU OF PUBLIC ROADS

APPROVED: _____ DATE _____
DIVISION ENGINEER

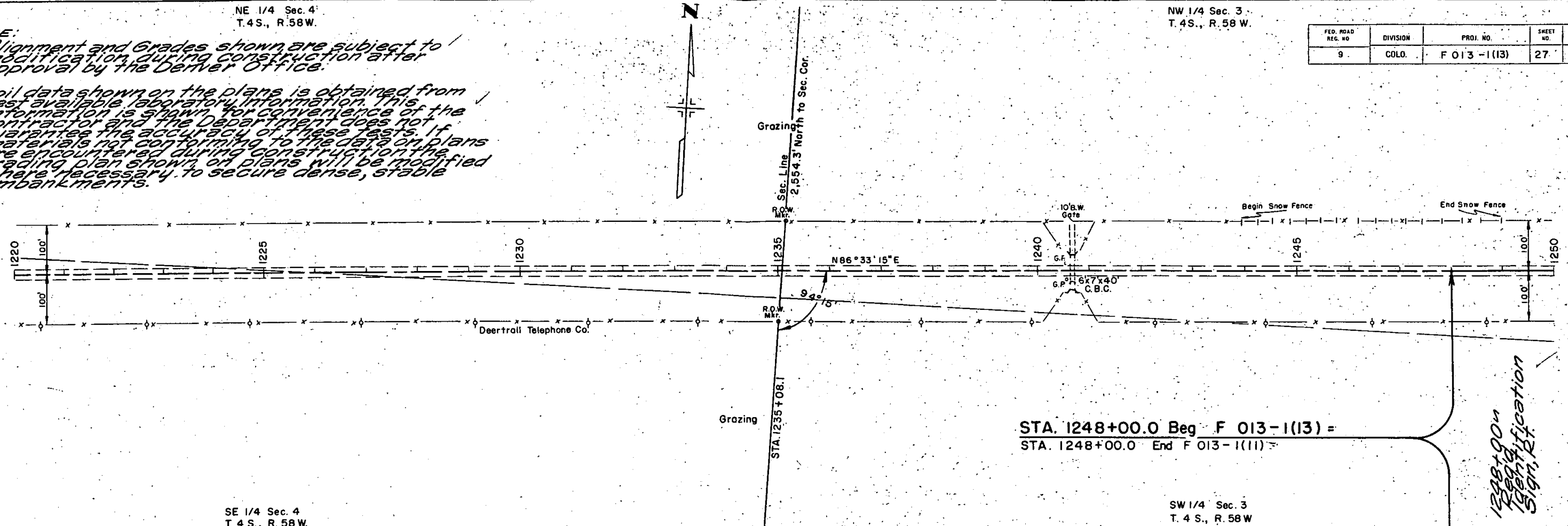
NE 1/4 Sec. 4
T. 4 S., R. 58 W.

NW 1/4 Sec. 3
T. 4 S., R. 58 W.

NOTE:
Alignment and Grades shown are subject to modification during construction after approval by the Denver Office.

Soil data shown on the plans is obtained from best available laboratory information. This information is shown for convenience of the Contractor and the Department does not guarantee the accuracy of these tests. If materials not conforming to the data on plans are encountered during construction the grading plan shown on plans will be modified where necessary to secure dense, stable embankments.

FED. ROAD REG. NO.	DIVISION	PROJ. NO.	SHEET NO.	TOTAL SHEETS
9	COLO.	F 013 -1(13)	27	

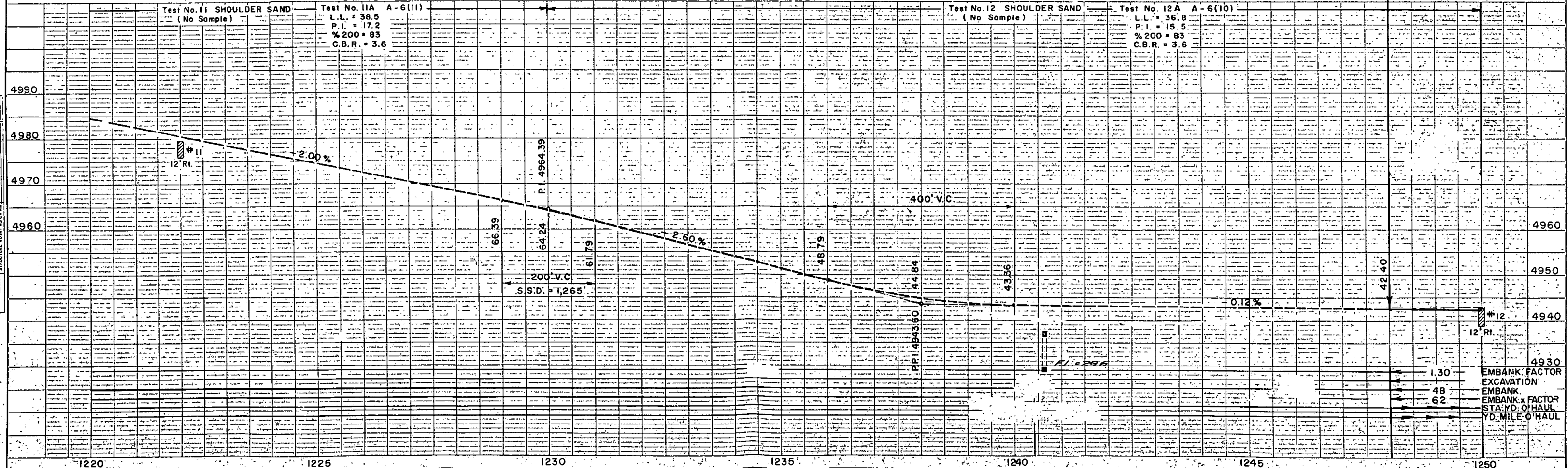


STA. 1248+00.0 Beg F 013-1(13) =
STA. 1248+00.0 End F 013-1(11)

SE 1/4 Sec. 4
T. 4 S., R. 58 W.

SW 1/4 Sec. 3
T. 4 S., R. 58 W.

1248+00.0
Keen
Identification
Sign, R.



4930 EMBANK. FACTOR
48 EXCAVATION
62 EMBANK. FACTOR
YD. MILE O' HAUL

DATE	BY

PLAN
DRAWN BY: [blank]
CHECKED BY: [blank]
DATE: [blank]

DATE	BY

PROFILE
DRAWN BY: [blank]
CHECKED BY: [blank]
DATE: [blank]

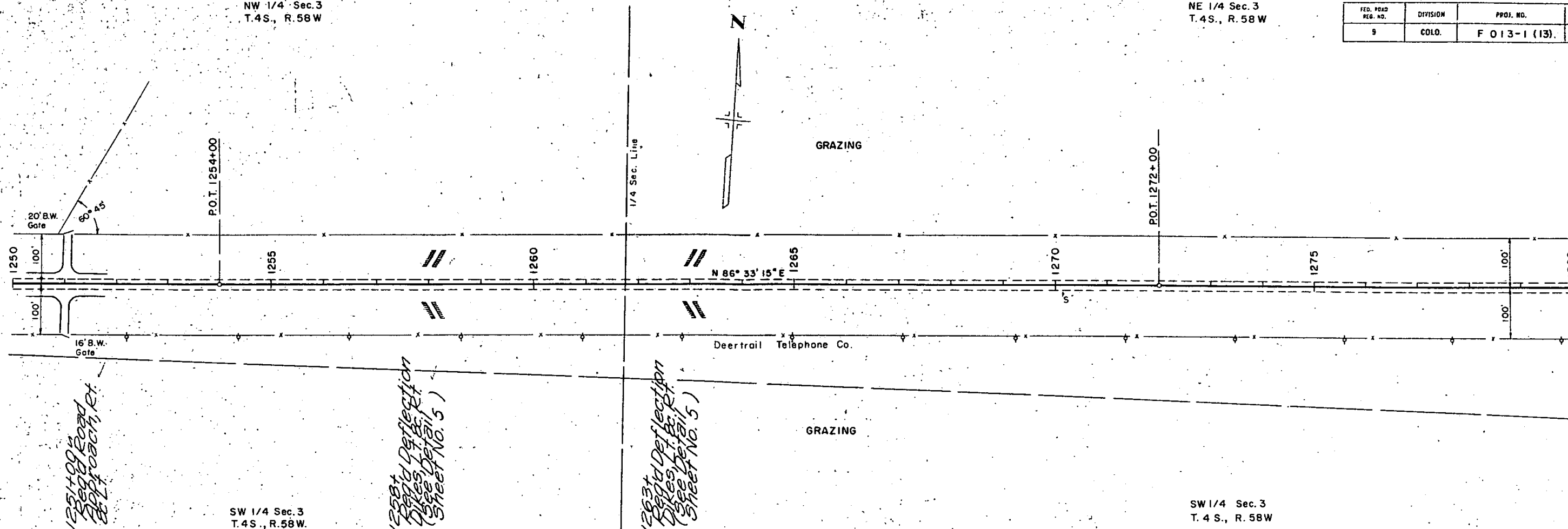
NW 1/4 Sec. 3
T. 4 S., R. 58 W

NE 1/4 Sec. 3
T. 4 S., R. 58 W

FED. ROAD REG. NO.	DIVISION	PROJ. NO.	SHEET NO.	TOTAL SHEETS
9	COLO.	F 013-1 (13)	28	

DATE	BY	REVISION

PLAN
SURVEYED BY: []
PLOTTED BY: []
GRADES CHECKED BY: []
STRUCTURE NOTATIONS CHECKED BY: []
NO. 22846



1251+00's Road Approach, Rt.

1258+ Deflection Dikes 17' B.W. (See Detail Sheet No. 5)

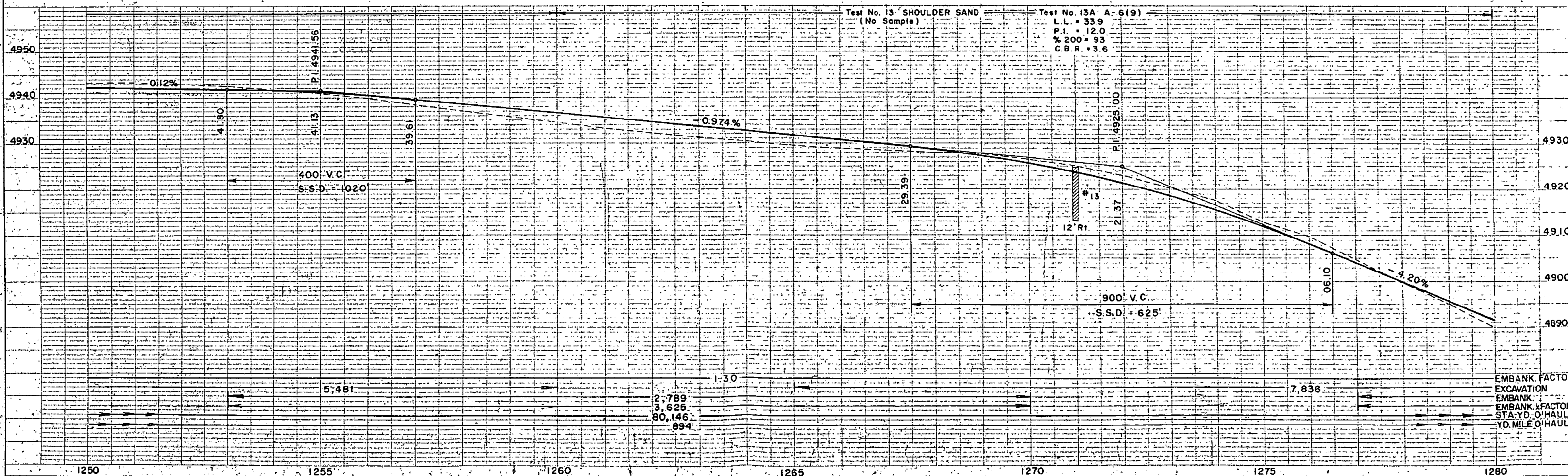
1263+ Deflection Dikes 17' B.W. (See Detail Sheet No. 5)

SW 1/4 Sec. 3
T. 4 S., R. 58 W.

SW 1/4 Sec. 3
T. 4 S., R. 58 W.

DATE	BY	REVISION

PROFILE
SURVEYED BY: []
PLOTTED BY: []
GRADES CHECKED BY: []
STRUCTURE NOTATIONS CHECKED BY: []
NO. 22847



NE 1/4 Sec. 3
T. 4 S., R. 58 W.

NW 1/4 Sec. 2
T. 4 S., R. 58 W.

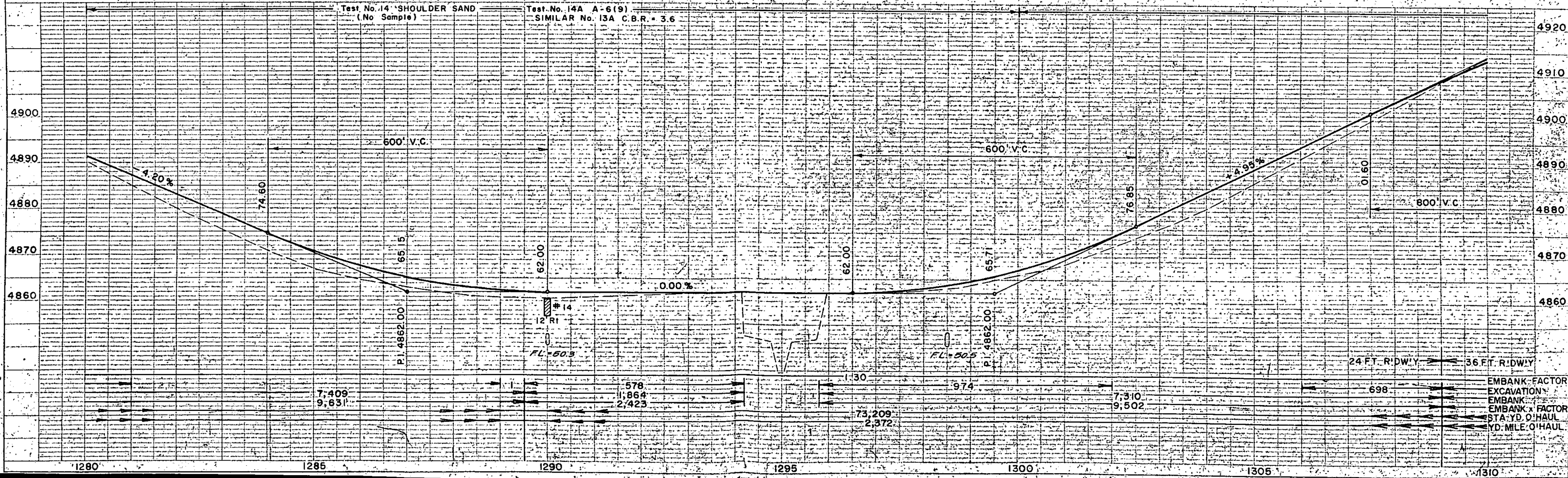
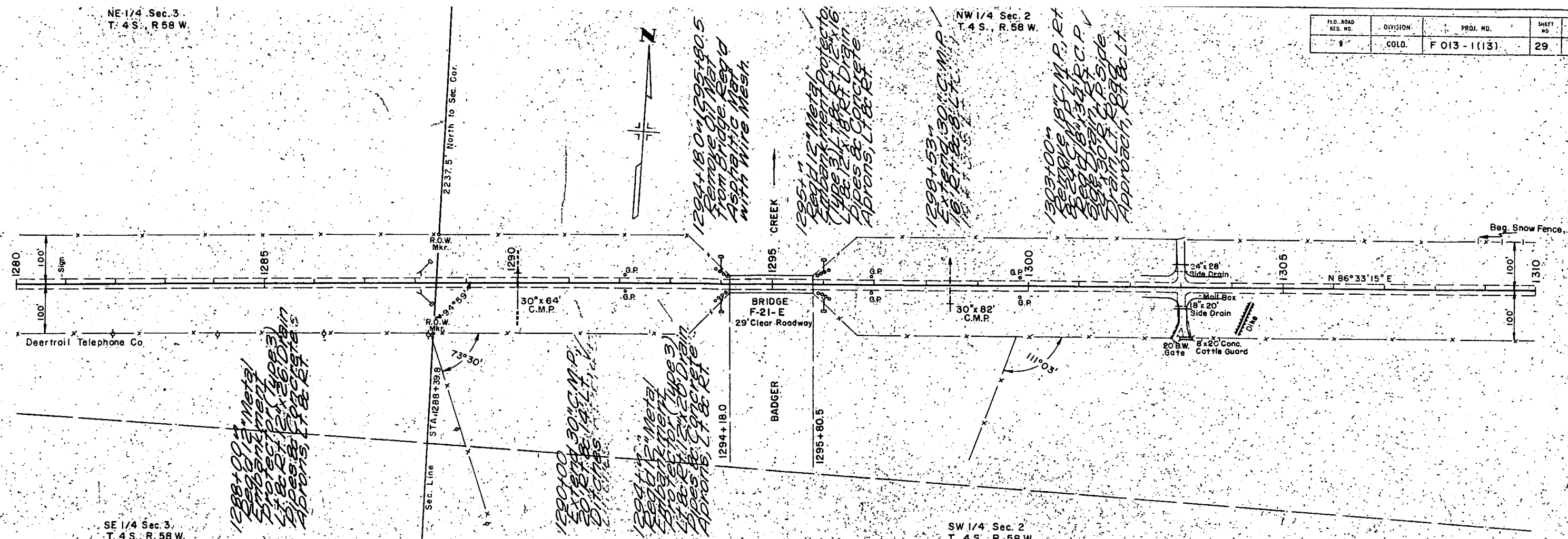
SE 1/4 Sec. 3
T. 4 S., R. 58 W.

SW 1/4 Sec. 2
T. 4 S., R. 58 W.

FED. ROAD REG. NO.	DIVISION	PROJ. NO.	SHEET NO.	TOTAL SHEETS
9	COLO.	F 013-1(13)	29	

PLAN
 SURVEYED BY
 PLOTTED BY
 ALIGNED CHECKED BY
 NO. 22846

PROFILE
 SURVEYED BY
 PLOTTED BY
 GRADES CHECKED BY
 NO. 22847



EMBANK-FACTOR
 EXCAVATION
 EMBANK-FACTOR
 STA. YD. O'HAUL
 YD-MILE O'HAUL

T. 4 S., R. 58 W.

T. 4 S., R. 58 W.

FD. ROAD RES. NO.	DIVISION	PROJ. NO.	SHEET NO.	TOTAL SHEETS
9	COLO.	F 013 - 1(13)	30	

$\Delta = 6^{\circ}55'$ Lt.
 $D = 0^{\circ}30'$
 $T = 692.6'$
 $L = 1383.0'$
 $R = 11,460.0'$
 $S = 0.020'/\text{Ft.}$
 Super. Trans. = 200'
 $D.S. = 70 \text{ mph.}$
 $H.S.D. > 1,300'$

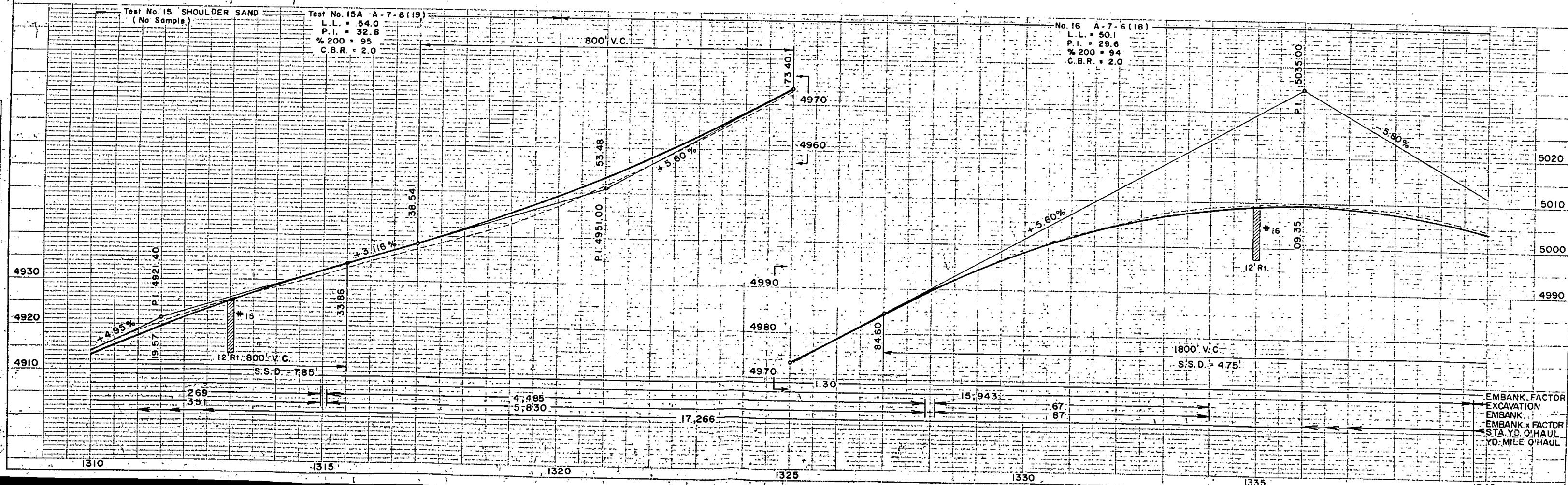
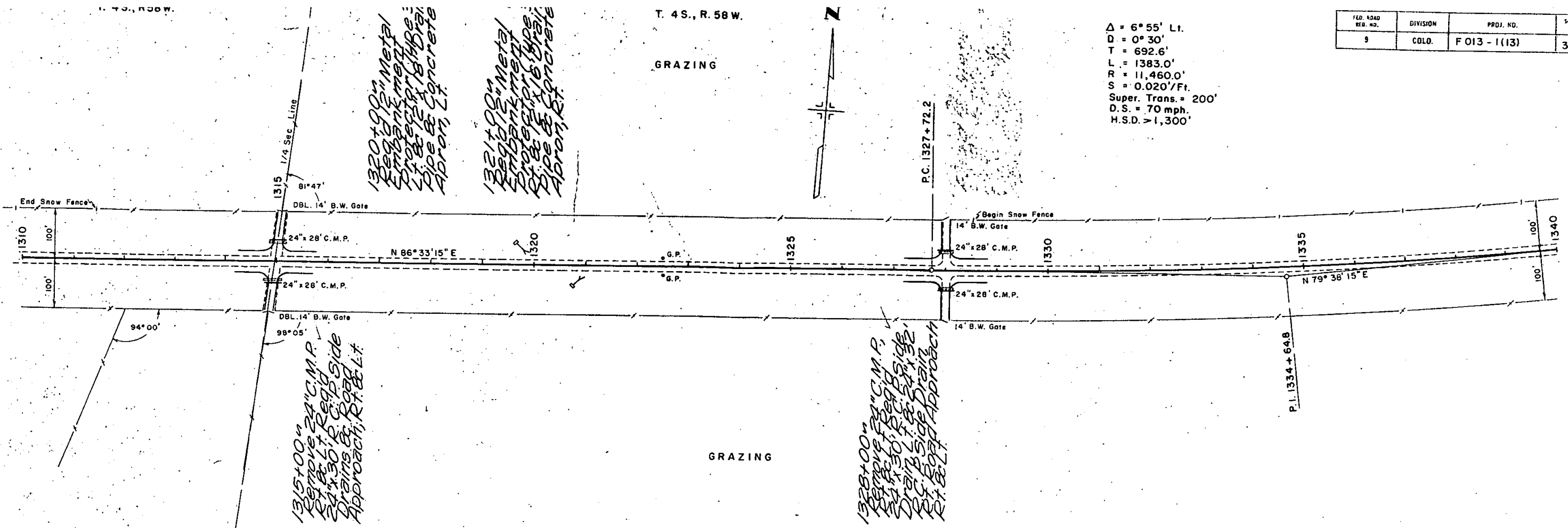


GRAZING

GRAZING

DATE	
BY	
REVISION	
NO. 22846	

DATE	
BY	
REVISION	
NO. 22847	

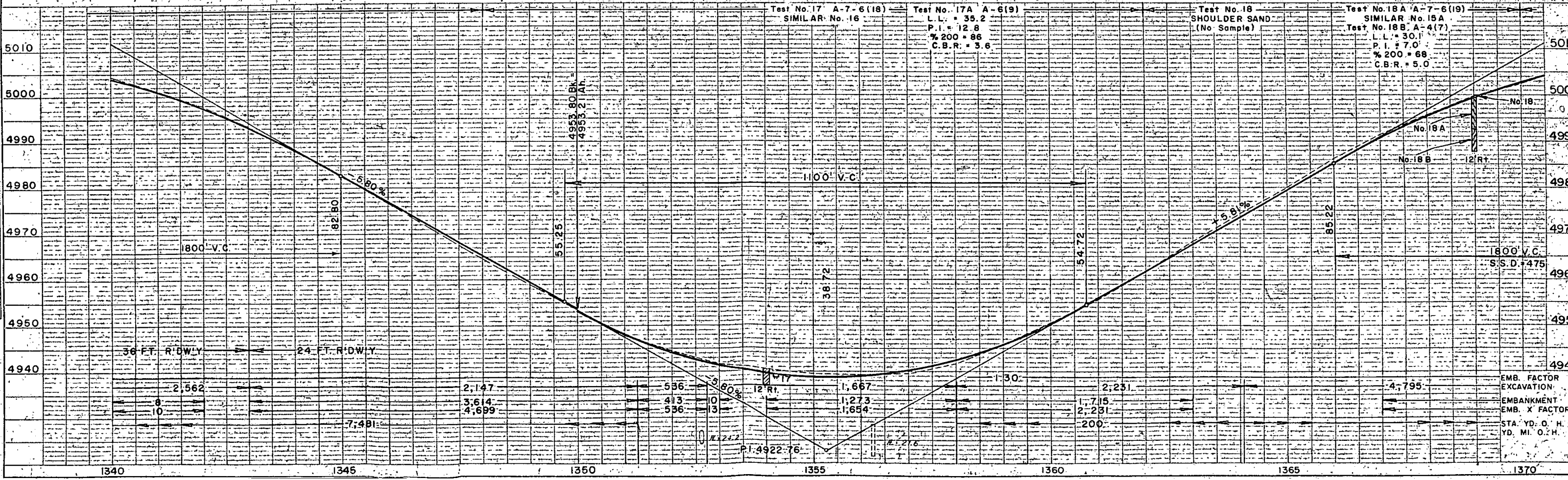
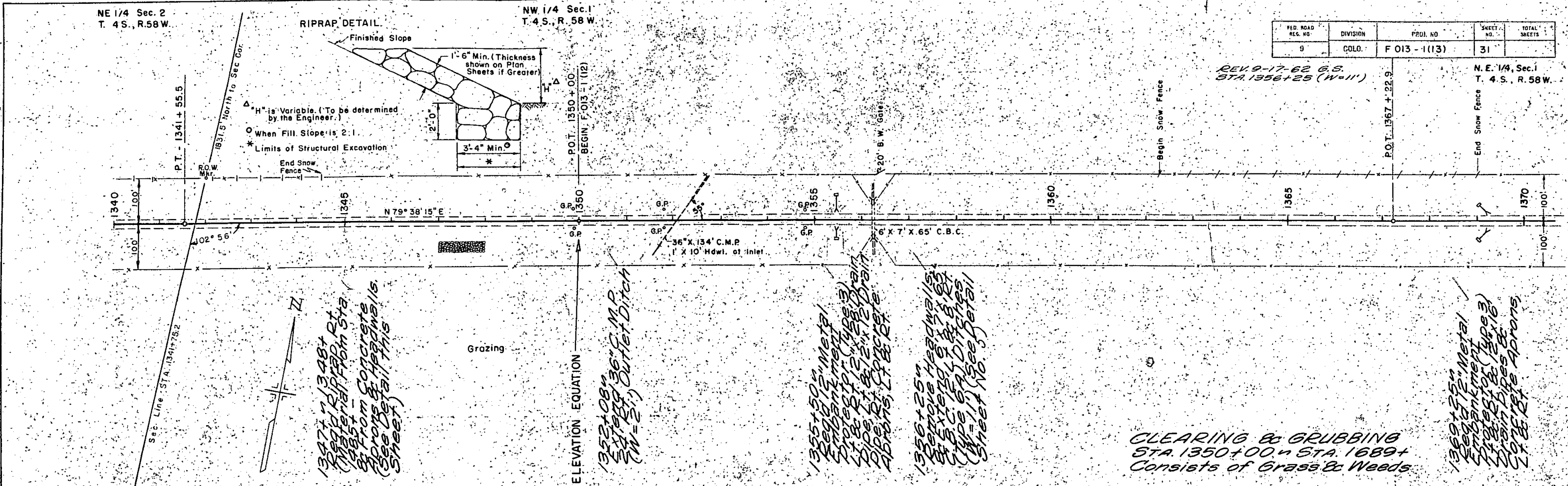


EMBANK. x FACTOR
 EXCAVATION x FACTOR
 STA. YD. O'HAUL
 YD. MILE O'HAUL

FED. ROAD DIST. NO.	DIVISION	PROJ. NO.	SHEET NO.	TOTAL SHEETS
9	COLO.	F 013 - 1(13)	31	

REV 9-17-62 G.S.
 STA. 1356+25 (W=11)

N.E. 1/4, Sec. 1
 T. 4 S., R. 58 W.



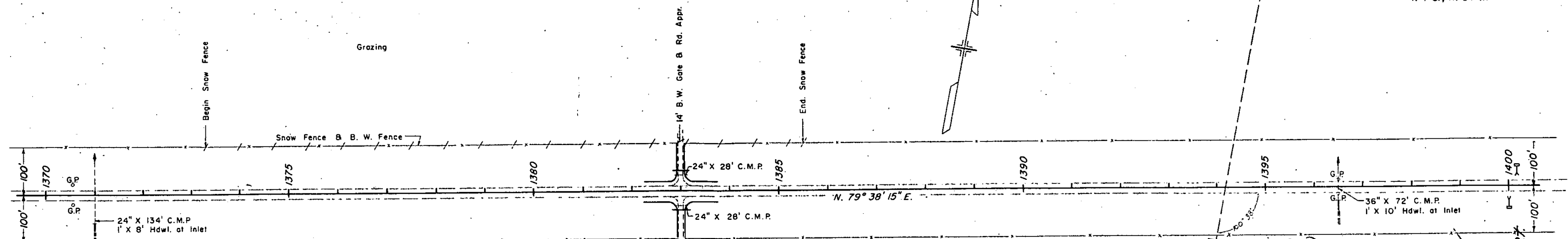
PLAN
 SURVEYED
 PLOTTED
 ALIGNED CHECKED
 DATE
 2284E

PROFILE
 SURVEYED
 GRADES CHECKED
 DATE
 2284F

N.E. 1/4, Sec. 1
T. 4 S., R. 58 W.

FED. ROAD REG. NO.	DIVISION	PROJ. NO.	SHEET NO.	TOTAL SHEETS
9	COLO.	F 013-1(13)	32	

N.W. 1/4, Sec. 6
T. 4 S., R. 57 W.



*1371+00 to 22" C.M.P.
Extend 22" C.M.P.
16' Rt. & B.L.
Inlet Ditch*

*1383+00 to 24" x 28"
Delay (at same
C.M.P.) as Side Drains
to Extend B. Reg'd
to 24' Approach, Lt.
& Rt.*

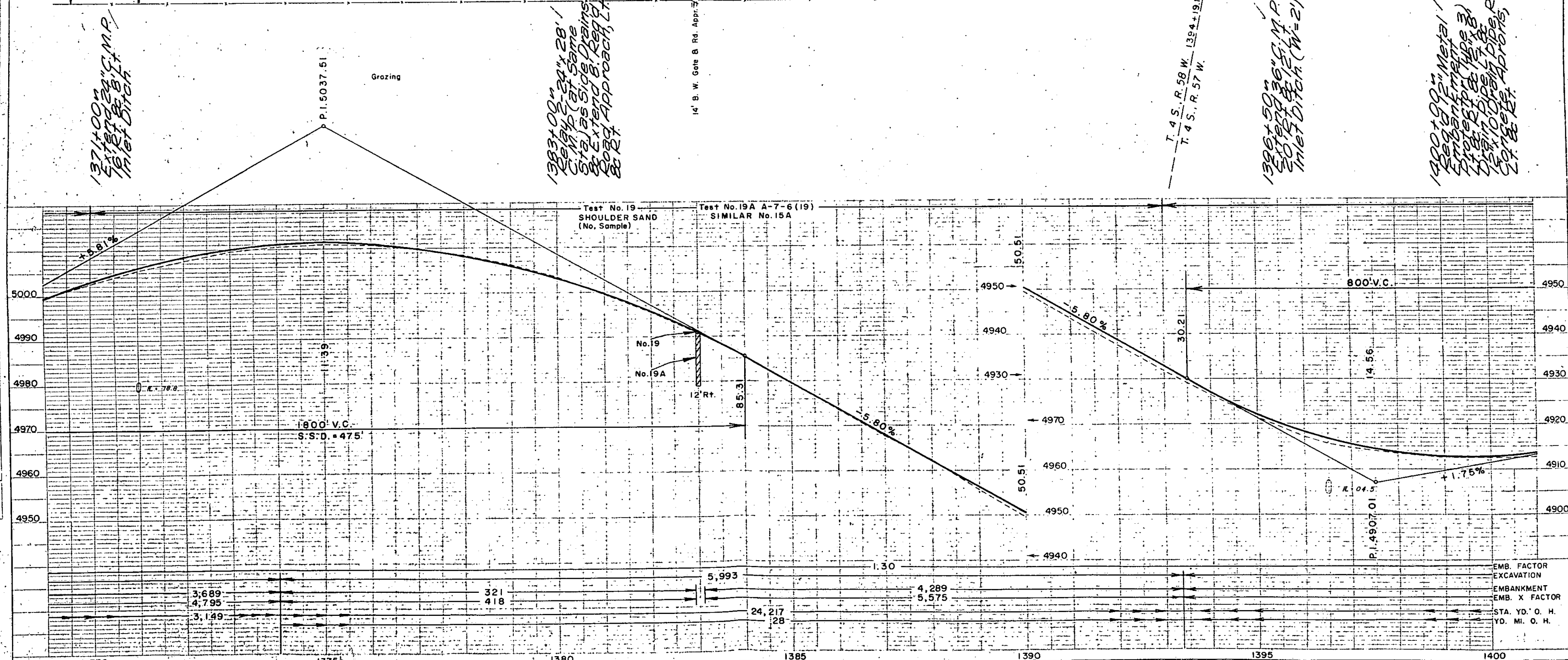
*T. 4 S., R. 58 W. 1394+19.1
T. 4 S., R. 57 W.*

*1396+50 to 36" C.M.P.
20' Rt. & B.L.
Inlet Ditch (W=2)*

*1400+00 to 10" Metal
Embankment
Protect 14" x 8"
Inlet Pipe, 14" x 8"
14" x 10" Drain Pipe, Rt.
14" x 8" Aprons,
Lt. & Rt.*

PLAN
DATE: 10/15/58
BY: J. H. H. 23656

PROFILE
SURVEYED: []
CHECKED: []
DATE: 10/15/58
BY: J. H. H. 23656



EMB. FACTOR
EXCAVATION
EMBANKMENT
EMB. X FACTOR
STA. YD. O. H.
YD. MI. O. H.

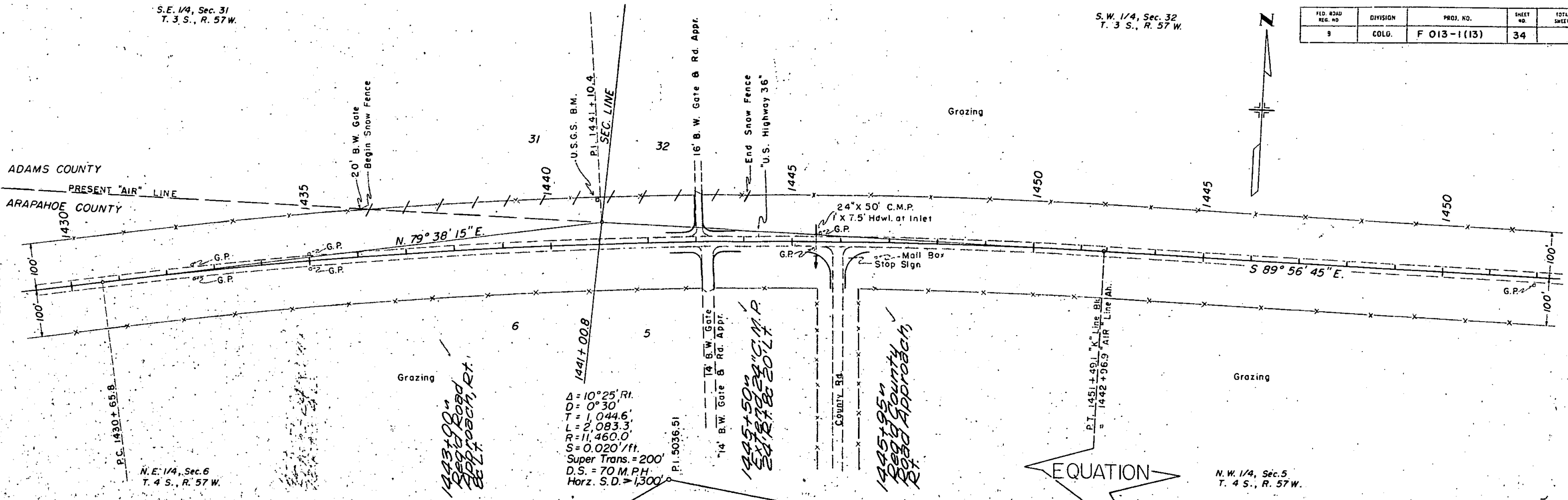
S.E. 1/4, Sec. 31
T. 3 S., R. 57 W.

S.W. 1/4, Sec. 32
T. 3 S., R. 57 W.

FED. ROAD REG. NO.	DIVISION	PROJ. NO.	SHEET NO.	TOTAL SHEETS
9	COLG.	F 013-1(13)	34	

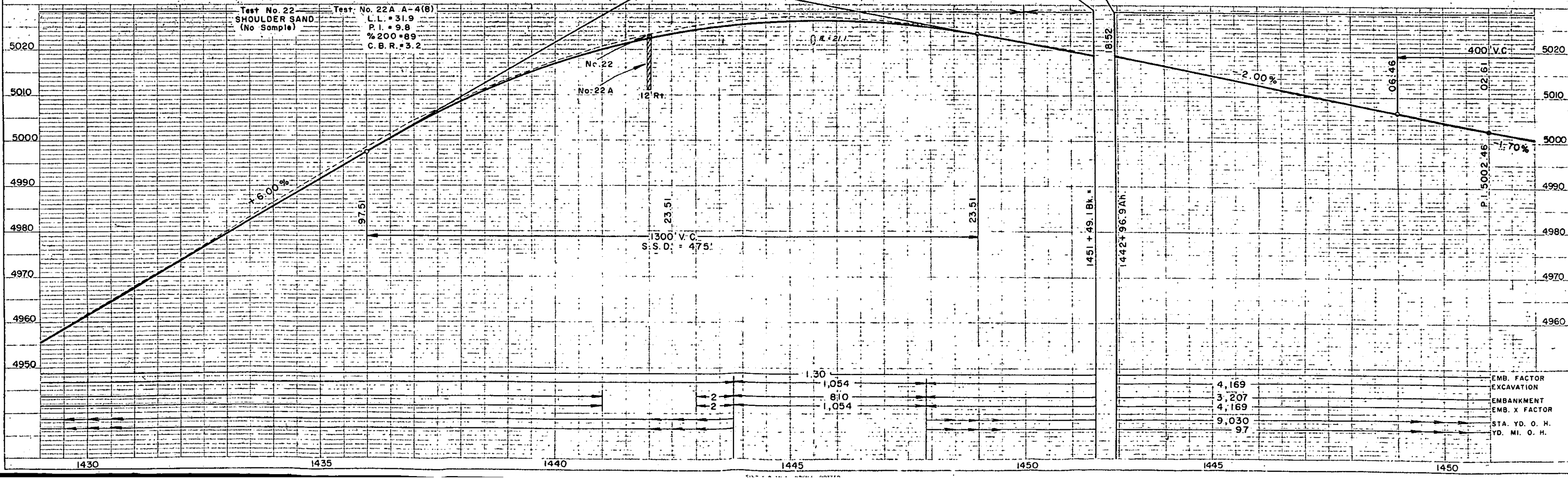
PLAN
DATE
BY
SURVEYED
NOTED
CHECKED
NO. 23668
RT. OF WAY CHECKED

PROFILE
DATE
BY
SURVEYED
NOTED
CHECKED
NO. 23668
STRUCTURE NOTATION CKD



$\Delta = 10^\circ 25' \text{ Rl.}$
 $D = 0^\circ 30'$
 $T = 1,044.6'$
 $L = 2,083.3'$
 $R = 11,460.0'$
 $S = 0.020' / \text{ft.}$
 Super Trans. = 200'
 $D.S. = 70 \text{ M.P.H.}$
 $\text{Horz. S.D.} > 1,300'$

EQUATION

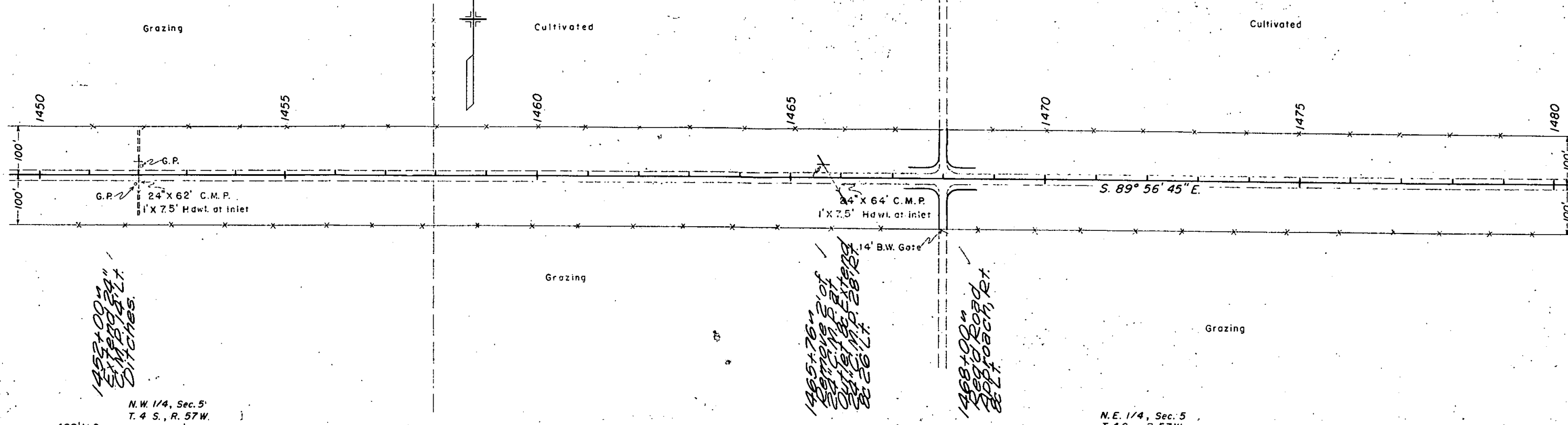


S.W. 1/4, Sec. 32
T. 3 S., R. 57 W.

ADAMS COUNTY

S.E. 1/4, Sec. 32
T. 3 S., R. 57 W.

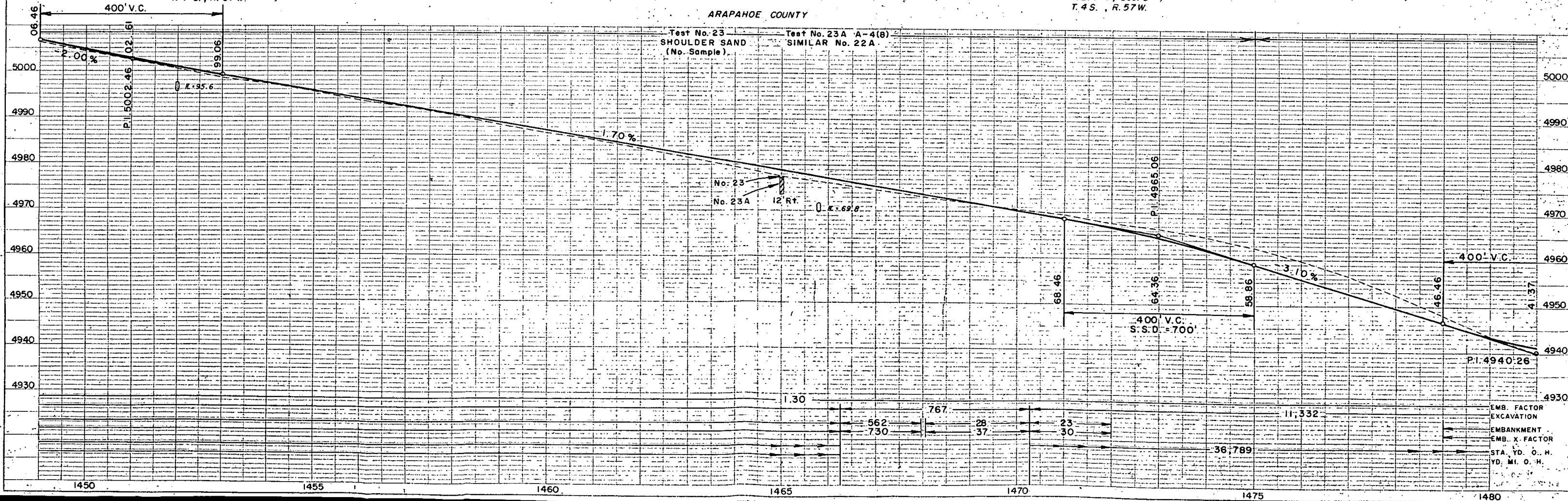
FED. ROAD REG. NO.	DIVISION	PROJ. NO.	SHEET NO.	TOTAL SHEETS
9	COLO.	F 013-1(13)	35	



N.W. 1/4, Sec. 5
T. 4 S., R. 57 W.

ARAPAHOE COUNTY

N.E. 1/4, Sec. 5
T. 4 S., R. 57 W.



EMB. FACTOR
EXCAVATION
EMBANKMENT
EMB. X FACTOR
STA. YD. O. H.
YD. MI. O. H.

PLAN
DATE: _____
BY: _____
CHECKED: _____
DATE: _____
NO. 23658

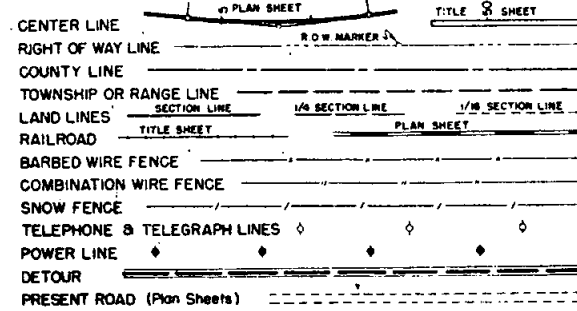
PROFILE
DATE: _____
BY: _____
CHECKED: _____
DATE: _____
NO. 23659

FEDERAL ROAD REGION NO.	DIVISION	PROJ. NO.	SHEET NO.	TOTAL SHEETS
9	COLORADO	F 013-1(14)	1	

COLORADO DEPARTMENT OF HIGHWAYS

PLAN AND PROFILE OF PROPOSED FEDERAL AID PROJECT NO. F 013-1(14) STATE HIGHWAY NO. 102 COUNTIES OF ADAMS & ARAPAHOE

CONVENTIONAL SIGNS



INDEX OF SHEETS

- SHEET NO.
1. SKETCH MAP, TITLE PAGE & TABULATION OF LENGTH & DESIGN DATA.
 2. TYPICAL SECTION AND GENERAL NOTES.
 3. SUMMARY OF APPROXIMATE QUANTITIES.
 4. STRUCTURE QUANTITIES.
 5. PIT SKETCH, SUBBASE AND SURFACING PLAN & TABULATION OF PLANT MIXED ASPHALTIC SHOULDER ROLL.
 6. SUMMARY OF EARTHWORK QUANTITIES, TABULATION OF DELINEATORS & DETAIL OF ASPHALTIC APRON.
 - 7-11. ALIGNMENT PLAN & PROFILE SHEETS.
 - 12-42. CROSS SECTIONS.
- M-2-A. APPROACH ROADS, FLARING, CUT SLOPE TREATMENT, BRIDGE & CREST WIDENING. 4/22/63.
- M-6-B. CONSTRUCTION TRAFFIC SIGNS. (2 SHEETS). 1/14/63.
- M-6-C. IDENTIFICATION SIGNS. 5/1/62.
- M-13-A. DITCH TYPES. 5/1/62.
- M-16-A. BACKFILL AROUND STRUCTURES. 5/2/63.
- M-57-A. MULTIPLE PLATE CULVERT DETAILS. 5/1/62.
- M-93-A. EMBANKMENT PROTECTORS. 5/1/62.
- M-192-A. DELINEATORS. 7/5/63.

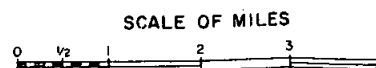
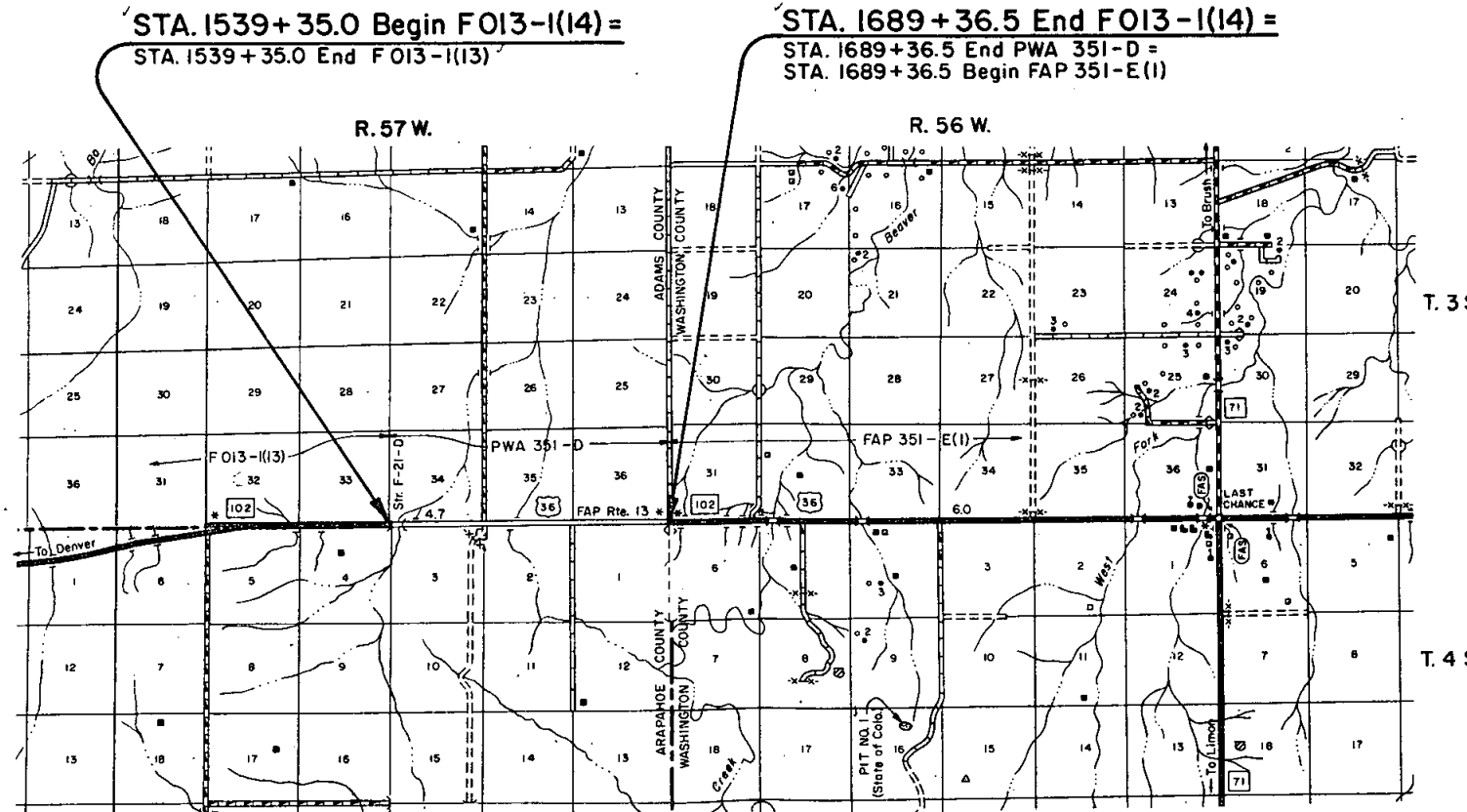
SCALES OF ORIGINAL DRAWINGS

ON PLAN 1 IN. = 100 FT.
ON PROFILE 1 IN. = 100 FT. HORIZONTAL
1 IN. = 10 FT. VERTICAL
GRADE LINE ON PROFILE IS SHOWN AS GRADE OF FINISHED ROAD
GROSS LENGTH OF PROJECT } 15,001.5 Lin. Ft. = 2.841 Mi.
NET LENGTH OF PROJECT }

TABULATION OF LENGTH & DESIGN DATA

STATION	DESCRIPTION	ROADWAY	
		LIN. FT.	MILES
1539+35.0	BEGIN F 013-1(14) = STA. 1539+35.0 End F 013-1(13)		
1540+02.0	Coal Creek Str. No. F-21-D	67.0	
1689+36.5	END F 013-1(14) = STA. 1689+36.5 End PWA 351-D Beg. FAP 351-E(1)	14,934.5	
TOTAL GROSS AND NET LENGTH		15,001.5	2.841

DESIGN DATA	
MAXIMUM GRADE	3.40%
MAXIMUM DEGREE OF CURVE	0°
MINIMUM S. S. D. - VERTICAL	600'
MINIMUM S. S. D. - HORIZONTAL	>1300'
MAXIMUM DESIGN SPEED	70 M.P.H.



SEE SPECIAL PROVISIONS FOR NOTICE TO BIDDERS

COLORADO
DEPARTMENT OF HIGHWAYS

APPROVED: *[Signature]*
CHIEF ENGINEER

DEPARTMENT OF COMMERCE
BUREAU OF PUBLIC ROADS

APPROVED: _____
DATE: _____

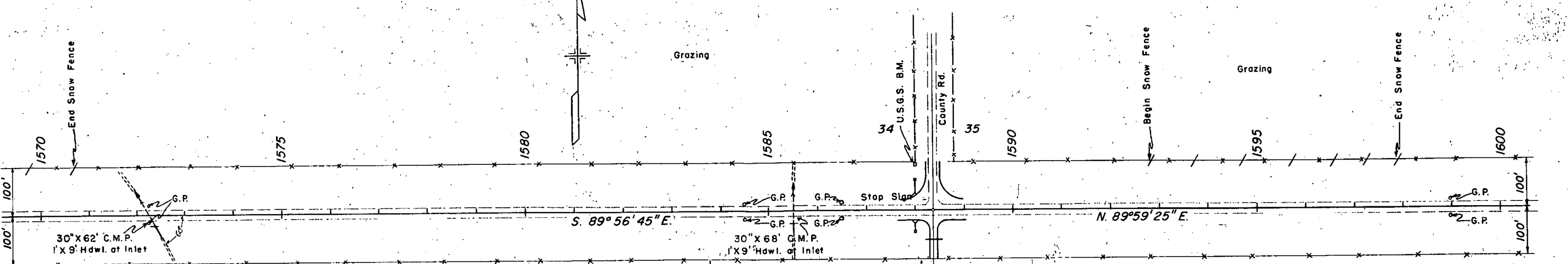
DIVISION ENGINEER

S.E. 1/4, Sec. 34,
T. 3 S., R. 57 W.

ADAMS COUNTY

S.W. 1/4, Sec. 35,
T. 3 S., R. 57 W.

FED. ROAD DIST. NO.	DIVISION	PROJ. NO.	SHEET NO.	TOTAL SHEETS
8	COLO.	F 013-1(14)	8	



*1572+18.41
Remove 2' of
30\"/>*

*1585+50.40
2' x 9' Hdwl. at Inlet
60' 20' Lt., Ditches.*

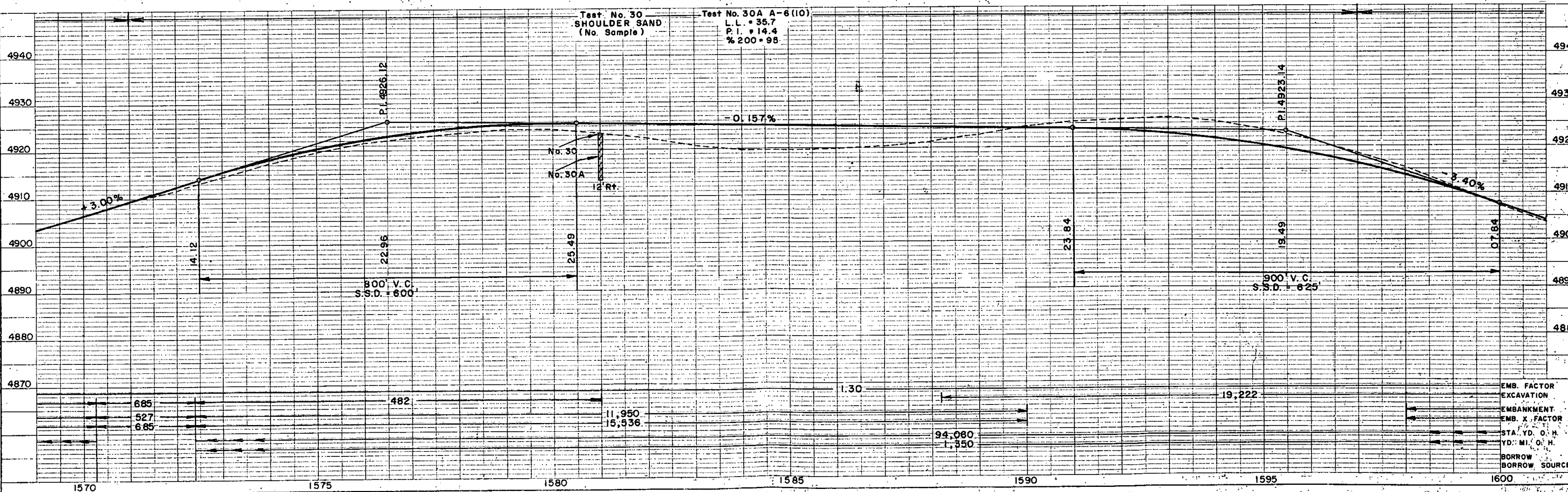
*1590+37.7
12' x 28' Side
Drain at Road
Approach, Rt.
County Road,
Approach, Lt.*

*1588+00.00
12\"/>*

N.E. 1/4, Sec. 3,
T. 4 S., R. 57 W.

ARAPAHOE COUNTY

N.W. 1/4, Sec. 2,
T. 4 S., R. 57 W.



NOTE: ALIGNMENT CHECKED
BY: OF WAY CHECKED
NO. 23658

PROFILE SURVEYED
GRADES CHECKED
B.M. NOTED
STRUCTURE NOTATIONS CHKD
NO. 23658

EMB. FACTOR
EXCAVATION
EMBANKMENT
EMB. X FACTOR
STA. YD. OF H.
YD. MI. OF H.
BORROW
BORROW SOURCE

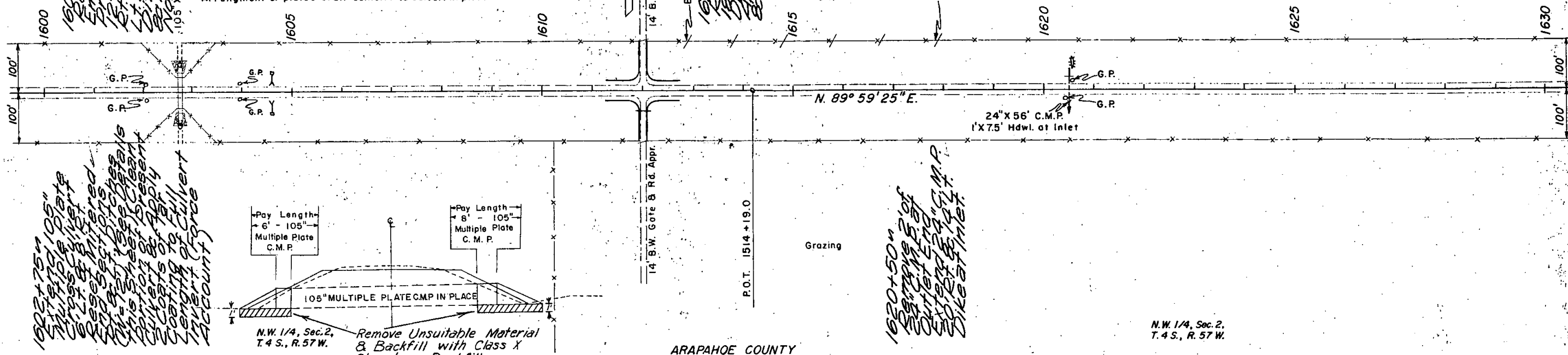
S. W. 1/4, Sec. 35,
T. 3 S., R. 57 W.

ADAMS COUNTY

SE. 1/4, Sec. 35,
T. 3 S., R. 57 W.

FED. ROAD REG. NO.	DIVISION	PROJ. NO.	SHEET NO.	TOTAL SHEETS
9	COLO.	F. 013-1(14)	9	

NOTES FOR MULTIPLE PLATE EXTENSION STA. 1602+75
 On this structure the longitudinal joints shall be secured with no less than four bolts nor more than eight bolts per linear foot of seam. The number of bolts provided and used shall be identical on all longitudinal joints and over the entire length of each joint. Ultimate Strength in Shear-Tension 10,500 Lbs./Lin. Ft.
 The design of plates is based on a section modulus of .0574 per inch of horizontal projection for No. 12 gauge plates.
 Plates of alternate design having section moduli equivalent to or greater than shown above may be used after approval by the Department, provided that no plate less than No. 12 gauge will be used.
 Arrangement of plates shall conform to culvert in place.



*1602+75 to 1605+105"
 Extend 105"
 Multiple Plate
 across Culvert
 6' Lt. of Material
 End Section Discharge
 This sheet is present
 in vicinity of Culvert
 Coatings of Full
 Length of Culvert
 Invert (Force
 Account)*



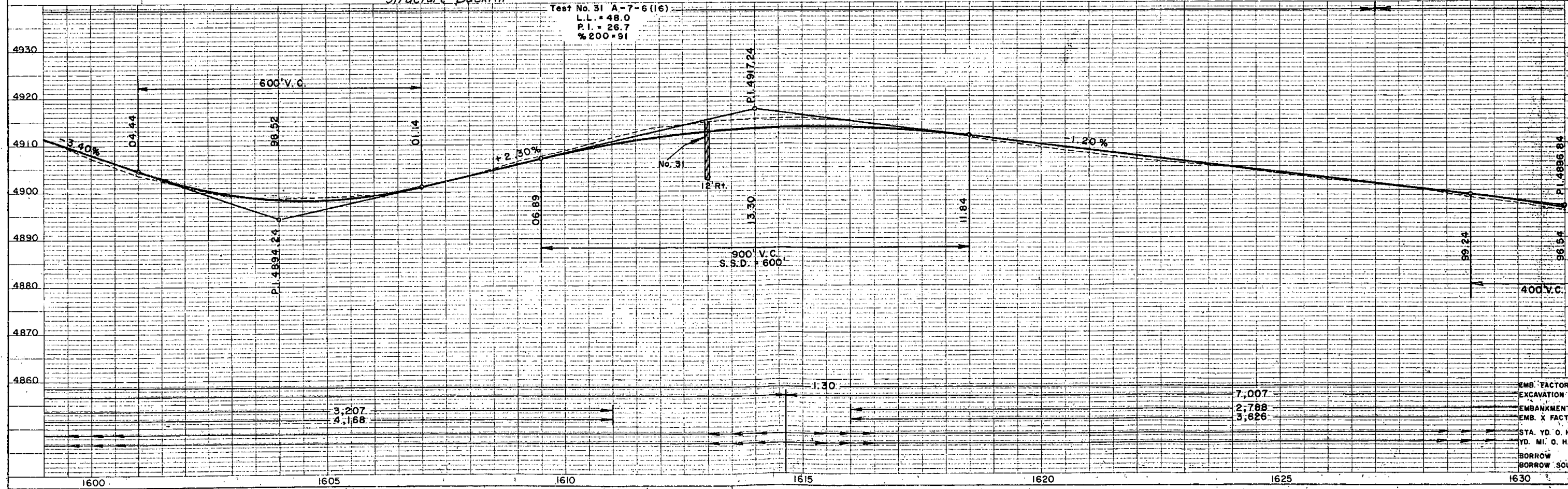
N.W. 1/4, Sec. 2,
T. 4 S., R. 57 W.
 Remove Unsuitable Material
& Backfill with Class X
Structure Backfill

*1620+50 to
 1625+105"
 Extend 105"
 Multiple Plate
 across Culvert
 6' Lt. of Material
 End Section Discharge
 This sheet is present
 in vicinity of Culvert
 Coatings of Full
 Length of Culvert
 Invert (Force
 Account)*

ARAPAHOE COUNTY

N.W. 1/4, Sec. 2,
T. 4 S., R. 57 W.

Test No. 31 A-7-6(16)
 L.L. = 48.0
 P.I. = 26.7
 % 200 = 91



NOTE BOOK SHEETS CHECKED. B.M. NOTED. STRUCTURE NOTATIONS CHKD. NO. 23659

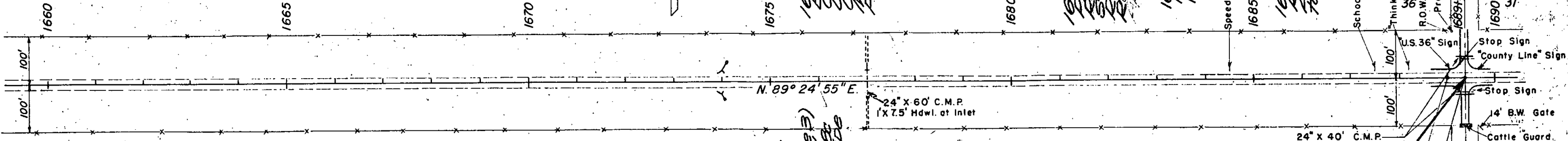
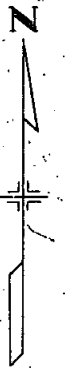
EMB. FACTOR
 EXCAVATION
 EMBANKMENT
 EMB. X FACTOR
 STA. YD. O. H.
 YD. MI. O. H.
 BORROW
 BORROW SOURCE

3,207	7,007
4,168	2,788
	3,826

SE. 1/4, Sec. 36,
T. 3 S., R. 57 W.

ADAMS COUNTY SE. 1/4, Sec. 36,
T. 3 S., R. 57 W.

FED. ROAD DIST. NO.	DIVISION	PROJ. NO.	SHEET NO.	TOTAL SHEETS
9	COLO.	F 013-1(14)	11	



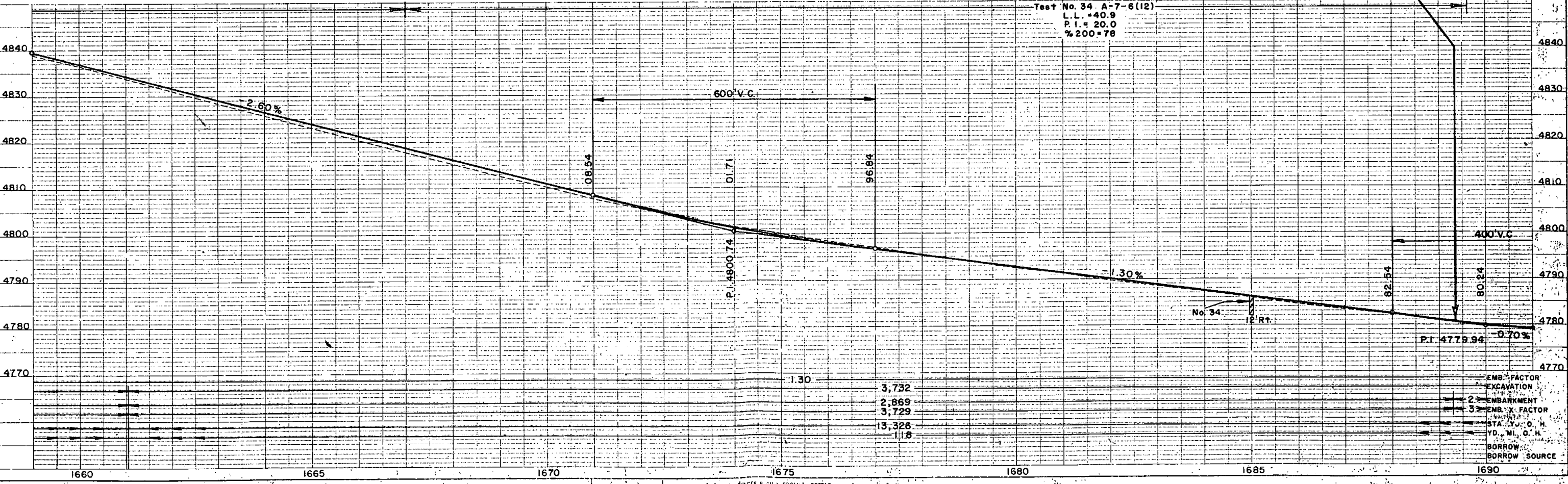
1672+00" Metal
1672+12" Metal
1672+24" Metal
1672+36" Metal
1672+48" Metal
1672+60" Metal
1672+72" Metal
1672+84" Metal
1672+96" Metal
1673+00" Metal
1673+12" Metal
1673+24" Metal
1673+36" Metal
1673+48" Metal
1673+60" Metal
1673+72" Metal
1673+84" Metal
1673+96" Metal
1674+00" Metal
1674+12" Metal
1674+24" Metal
1674+36" Metal
1674+48" Metal
1674+60" Metal
1674+72" Metal
1674+84" Metal
1674+96" Metal
1675+00" Metal
1675+12" Metal
1675+24" Metal
1675+36" Metal
1675+48" Metal
1675+60" Metal
1675+72" Metal
1675+84" Metal
1675+96" Metal
1676+00" Metal
1676+12" Metal
1676+24" Metal
1676+36" Metal
1676+48" Metal
1676+60" Metal
1676+72" Metal
1676+84" Metal
1676+96" Metal
1677+00" Metal
1677+12" Metal
1677+24" Metal
1677+36" Metal
1677+48" Metal
1677+60" Metal
1677+72" Metal
1677+84" Metal
1677+96" Metal
1678+00" Metal
1678+12" Metal
1678+24" Metal
1678+36" Metal
1678+48" Metal
1678+60" Metal
1678+72" Metal
1678+84" Metal
1678+96" Metal
1679+00" Metal
1679+12" Metal
1679+24" Metal
1679+36" Metal
1679+48" Metal
1679+60" Metal
1679+72" Metal
1679+84" Metal
1679+96" Metal
1680+00" Metal
1680+12" Metal
1680+24" Metal
1680+36" Metal
1680+48" Metal
1680+60" Metal
1680+72" Metal
1680+84" Metal
1680+96" Metal
1681+00" Metal
1681+12" Metal
1681+24" Metal
1681+36" Metal
1681+48" Metal
1681+60" Metal
1681+72" Metal
1681+84" Metal
1681+96" Metal
1682+00" Metal
1682+12" Metal
1682+24" Metal
1682+36" Metal
1682+48" Metal
1682+60" Metal
1682+72" Metal
1682+84" Metal
1682+96" Metal
1683+00" Metal
1683+12" Metal
1683+24" Metal
1683+36" Metal
1683+48" Metal
1683+60" Metal
1683+72" Metal
1683+84" Metal
1683+96" Metal
1684+00" Metal
1684+12" Metal
1684+24" Metal
1684+36" Metal
1684+48" Metal
1684+60" Metal
1684+72" Metal
1684+84" Metal
1684+96" Metal
1685+00" Metal
1685+12" Metal
1685+24" Metal
1685+36" Metal
1685+48" Metal
1685+60" Metal
1685+72" Metal
1685+84" Metal
1685+96" Metal
1686+00" Metal
1686+12" Metal
1686+24" Metal
1686+36" Metal
1686+48" Metal
1686+60" Metal
1686+72" Metal
1686+84" Metal
1686+96" Metal
1687+00" Metal
1687+12" Metal
1687+24" Metal
1687+36" Metal
1687+48" Metal
1687+60" Metal
1687+72" Metal
1687+84" Metal
1687+96" Metal
1688+00" Metal
1688+12" Metal
1688+24" Metal
1688+36" Metal
1688+48" Metal
1688+60" Metal
1688+72" Metal
1688+84" Metal
1688+96" Metal
1689+00" Metal
1689+12" Metal
1689+24" Metal
1689+36.5" Metal

STA. 1689+36.5 END F 013-1(14) =
STA. 1689+36.5 = END PWA 351-D = BEG. FAP 351-E(1)

N.E. 1/4, Sec. 1,
T. 4 S., R. 57 W.

ARAPAHOE COUNTY N.E. 1/4, Sec. 1,
T. 4 S., R. 57 W.

WASHINGTON COUNTY



PROFILE
NO. 23658
DATE

DATE
NO. 23658
STRUCTURE NOTATION CHYD

