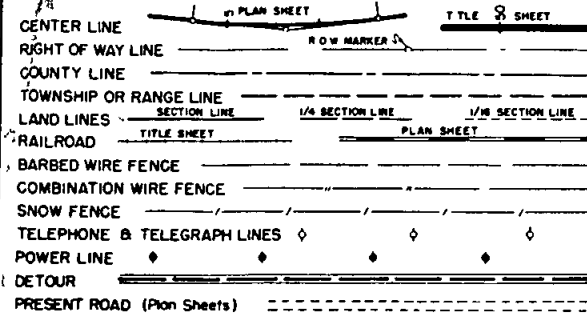


TITLE SHEET

CONVENTIONAL SIGNS



COLORADO DEPARTMENT OF HIGHWAYS

PLAN AND PROFILE OF PROPOSED FEDERAL AID PROJECT NO. F 016-1(19) STATE HIGHWAY NO 8 JEFFERSON COUNTY RIGHT OF WAY

INFORMATION OBTAINED FROM AVAILABLE COUNTY RECORDS

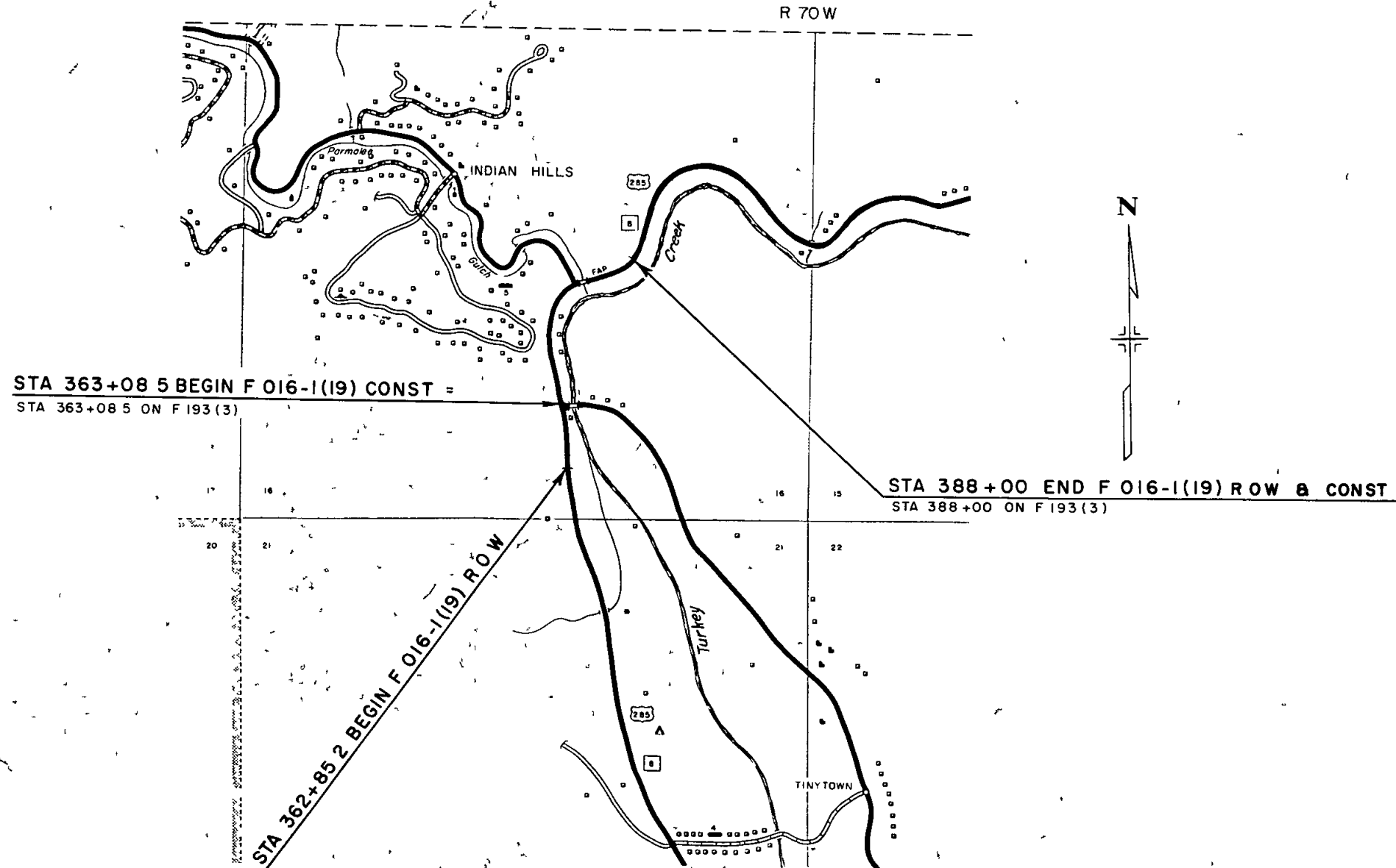
SCALES OF ORIGINAL DRAWINGS
 ON PLAN 1 IN = 100 FT
 ON PROFILE 1 IN = 100 FT HORIZONTAL
 1 IN = 10 FT VERTICAL
 GRADE LINE ON PROFILE IS SHOWN AS GRADE OF FINISHED ROAD
 LENGTH OF PROJECT = 0.474 MILES (ROW)

FEDERAL ROAD REGION NO	DIVISION	PROJ NO	SHEET NO	TOTAL SHEETS
9	COLORADO	F 016-1(19)	1	

RIGHT OF WAY
INTERSECTION AT TINYTOWN - EAST

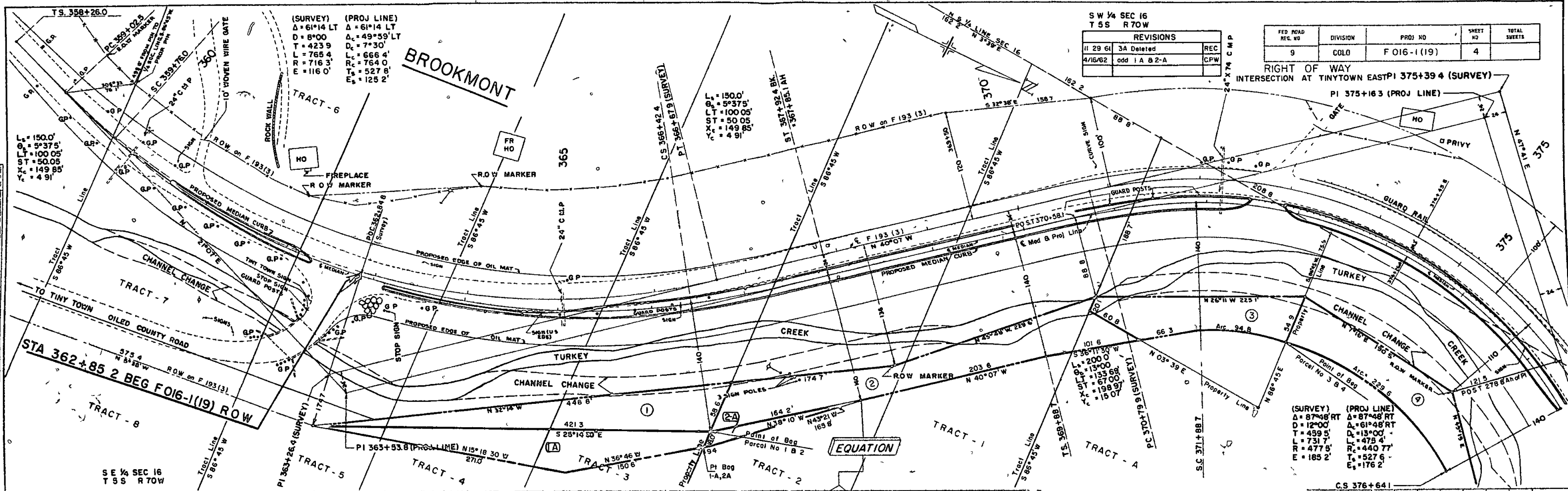
REVISIONS	

INDEX OF SHEETS
 SHEET NO 1 - TITLE SHEET
 2 - TABULATION OF PROPERTIES
 3-5 - PLAN AND PROFILE SHEETS
 SHOWING RIGHT OF WAY



DATE	BY	REVISIONS
3.10.38	W. A. GRAY	1. PLANNED
3.28.38	W. A. GRAY	2. ALIGNED CHECKED
		3. BY PLAN CHECKER

DATE	BY	REVISIONS
		1. PROFILE
		2. CHANGES CHECKED
		3. BY PLAN CHECKER



SW 1/4 SEC 16
 T 55 R 70 W

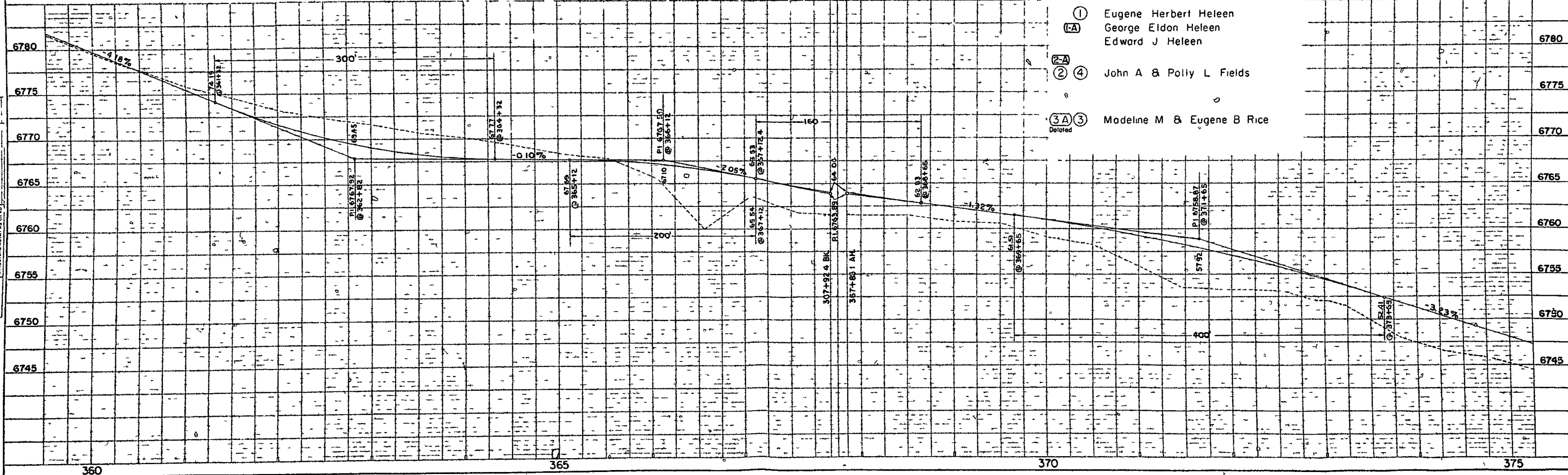
REVISIONS		
11 29 61	3A Deleted	REC
4/16/62	odd 1A B 2-A	CPW

FED ROAD REC. NO.	DIVISION	PROJ. NO.	SHEET NO.	TOTAL SHEETS
9	COLO.	F 016-1(19)	4	

RIGHT OF WAY INTERSECTION AT TINYTOWN EAST PI 375+39.4 (SURVEY)

(SURVEY)
 Δ = 87°48' RT
 D = 12°00'
 T = 439.5'
 R = 477.5'
 E = 185.2'

(PROJ. LINE)
 Δ = 87°48' RT
 D = 61°48' RT
 L = 13°00'
 L = 475.4'
 R = 527.6'
 E = 176.2'



- ① Eugene Herbert Heleen
 George Eldon Heleen
 Edward J Heleen
- (A) John A & Polly L Fields
- ② ④ John A & Polly L Fields
- (3A) ③ Madeline M & Eugene B Rice
 Deleted

360

365

370

375

DATE	3/11/19
BY	WA GRAY
PROJECT NO.	BWD B AFD
SCALE	1" = 40'
NO. OF SHEETS	5
NO. OF THIS SHEET	3
DATE	3/11/19
BY	WA GRAY
PROJECT NO.	BWD B AFD
SCALE	1" = 40'
NO. OF SHEETS	5
NO. OF THIS SHEET	3

DATE	3/11/19
BY	WA GRAY
PROJECT NO.	BWD B AFD
SCALE	1" = 40'
NO. OF SHEETS	5
NO. OF THIS SHEET	3

SURVEY F 193 (3)
 Δ 56° 54' L1
 D 10° 00'
 T 310 46
 L 569 0
 R = 573 0
 E = 78 71

FED. ROAD REC. NO.	DIVISION	PROJ. NO.	SHEET NO.	TOTAL SHEETS
9	COLO.	F 016-1 (19)	5	

RIGHT OF WAY INTERSECTION AT TINY TOWN - EAST
 PT 391+08.7 ON ORIGINAL SURVEY F 193 (3)

(PROJ. LINE)
 Δ = 25° 51' 36"
 T₁ = 250 26
 T₂ = 180 55
 Δc = 20° 18' 36"
 Dc = 7° 24'
 Tc = 138 69
 Lc = 274 46
 Rc = 774 32

REVISIONS	

