

COLORADO DEPARTMENT OF HIGHWAYS

PLAN AND PROFILE OF PROPOSED FEDERAL AID PROJECT NO. F 016-1 (20) SEC. I STATE HIGHWAY NO. 70 JEFFERSON COUNTY RIGHT OF WAY

INFORMATION OBTAINED FROM AVAILABLE COUNTY RECORDS

FEDERAL ROAD REGION NO.	DIVISION	PROJ. NO.	SHEET NO.	TOTAL SHEETS
9	COLORADO	F 016-1(20) SEC. I	1	

RIGHT OF WAY Hampden Ave. - West of Kipling

INDEX OF SHEETS

- SHEET NO. 1 TITLE SHEET
- 2 TABULATION OF PROPERTIES
- 3-9, 9A, 10, 10A-12 PLAN AND PROFILE SHEETS SHOWING RIGHT OF WAY
- 13-17 OWNERSHIP MAPS

REVISIONS		
10-30-64	Add Interchange	D.
8-23-65	Revised to CONVENTY SIGNS	D. I.
8-25-65	Add Street 9A	D. I.
9-14-67	Rev Proj No	FCM

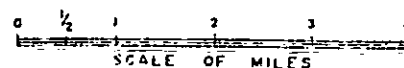
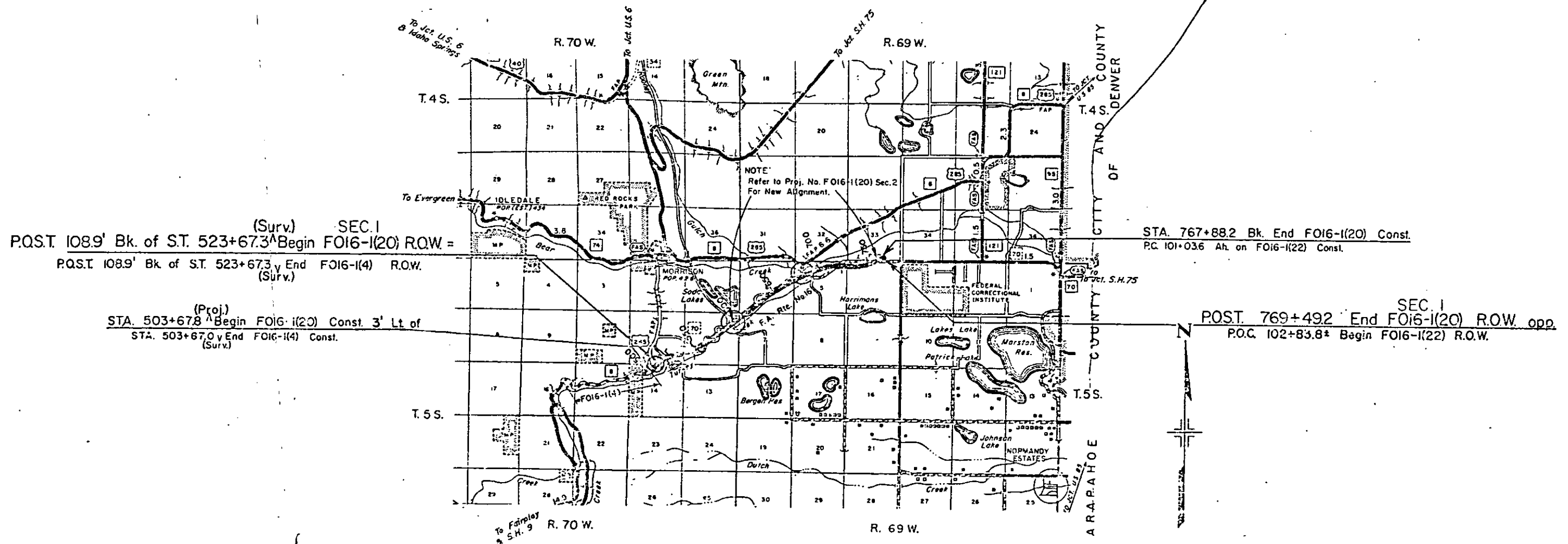
NOTE: Descriptions on this project calculated and checked by field forces.

CONVENTIONAL SIGNS

CENTER LINE	PLAN SHEET	TITLE SHEET
RIGHT OF WAY LINE	PLAN SHEET	TITLE SHEET
COUNTY LINE	PLAN SHEET	TITLE SHEET
TOWNSHIP OR RANGE LINE	PLAN SHEET	TITLE SHEET
LAND LINES	SECTION LINE	1/4 SECTION LINE
RAILROAD	TITLE SHEET	PLAN SHEET
BARBED WIRE FENCE		
COMBINATION WIRE FENCE		
SNOW FENCE		
TELEPHONE & TELEGRAPH LINES		
POWER LINE		
DETOUR		
PRESENT ROAD (Plan Sheets)		
C OF A LINE (CONTROL OF ACCESS)		
ACCESS DENIED BY DEED	15' OP.	20' OP.
TOP OF CUT		
TOE OF FILLS		

SCALES OF ORIGINAL DRAWINGS

ON PLAN 1 IN. = 100 FT.
ON PROFILE 1 IN. = 100 FT. HORIZONTAL
1 IN. = 10 FT. VERTICAL
GRADE LINE ON PROFILE IS SHOWN AS GRADE OF FINISHED ROAD
GROSS LENGTH OF PROJECT *
NET LENGTH OF PROJECT *



R. O. W. TABULATION OF PROPERTIES IN

JEFFERSON

COUNTY S.H.No. 70 PROJ.

F 016-1(20)SEC.1

FEDERAL ROAD DIVISION NO.	DISTRICT	PROJECT NO.	SHEET NO.
0	COLORADO	F 016-1(20) Sec.1	2

RIGHT OF WAY HAMPDEN AVE - WEST OF KIPLING

PARCEL NO.	OWNER	ADDRESS	LOCATION	AREA IN ACRES				PURCHASE DATA					REMARKS	NO.	
				PARCEL	TO BE ACQUIRED	REMAINDER		LAND	IMPROV'M'TS	DAMAGE	MISC.	TOTAL			
			T. 5S., R.70W.			LT.	RT.								
1A	Eunice Eileen Ford		W1/2 SE 1/4 Sec II	0.904	0.904	7.747									
1B Rev	Deleted														
1-X	Twila M. Archer		SW 1/4 SE 1/4 Sec II	0.230	0.170	2.979									
1C Rev	Otto Sanger		SW 1/4 SE 1/4 Sec II	0.439	0.439		3.486								
1D Rev	Wallace H. Fowler & Gay Nell Y. Fowler		SW 1/4 SE 1/4 Sec II	0.555	0.555		1.945								
1 Rev	Louie Pallaoro et. al.		E 1/2 SE 1/4 Sec II	9.062	8.843	50.420	18.151						See Memo. of Ownership		
2 Rev	Louie Pallaoro et. al.		SW 1/4 Sec 12	26.324	24.373	216.224	83.468						See Memo. of Ownership		
PE-2A	Louie Pallaoro et. al.		SW 1/4 Sec. 12	0.201	0.201								Permanent Easement for channel change		
3 Rev	Beattie E. Johnson & Helen J. Zietz, J.T.		SW 1/4 NE 1/4 Sec 12	13.423	11.770	16.517	93.346								
			W1/2 SE 1/4 Sec 12												
4	Harry W. Spahn & Lillian A. Spahn		SE 1/4 NE 1/4 Sec 12	0.376	0.221										
5	Deleted														
6 Rev	Deleted														
			T. 5 S., R.69W.												
7	Deleted														
8 Rev	Deleted														
9	Deleted														
			T. 5 S., R.70W.												
10	Soda Lakes Finance Corp.		SE 1/4 Sec 1	0.105	0.105	154.340									
			T. 5 S., R.69W.												
11 Rev 2	Deleted														
12	Deleted														
12 A	Deleted														
13	Deleted														
14 Rev	Deleted														

REVISIONS		
10-29-64	Rev. 1-B, 1-C, 1-D, 1, 2, 3, 8, 6	D. 1
1-5-65	Rev. 6 Rev. 8	D. 1
1-5-65	Deleted Parc No 9 & 12-A	D. 1
8-3-65	Rev. Parcels 11 & 14	D. 1
8-3-65	Add. Parc. PE-2A	D. 1
8-17-65	Name Change, 1B & 1D	D. 1
9-1-65	Rev. Parcel No 11 Rev.	D. 1
11-15-65	Name change, Par. 1A	D. 1
1-21-66	Name Change Par. 7 & 11 Rev. 2	D. 1
2-3-66	Name Change 2 Rev PE-2A,	
	6 Rev. 2, 8 Rev. 12, 1 Rev.	D. 1
6-3-66	Deleted Par. No 15	D. 1
7-20-66	Add. Parcel No 1-X	D. 1
9-14-67	Deleted Parcels 5, 6 Rev. 7	
	8 Rev., 11 Rev., 12, 13 & 14 Rev.	
	8 Rev Proj. No.	FCM

R. O. W. TABULATION OF PROPERTIES IN JEFFERSON COUNTY S.H.No. 70 PROJ. F 016-1 (20)SEC.1

FEDERAL ROAD DIVISION NO.	DISTRICT	PROJECT NO.	SHEET NO.
8	COLORADO	F 016-1(20)SEC.1	2A

RIGHT OF WAY HAMPDEN AVE - WEST OF KIPLING

PARCEL NO.	OWNER	ADDRESS	LOCATION	AREA IN ACRES			PURCHASE DATA					REMARKS	NO.	
				PARCEL	TO BE ACQUIRED	REMAINDER	LAND	IMPROV'M'TS	DAMAGE	MISC.	TOTAL			
			T. 5 S., R. 69 W.			LT. RT.								
15-A	Deleted												1-21-65 Rev. Parc. No. 25 & 26	D.I.
15 Rev.	Deleted												1-21-65 Add. Parc. No. PE-28	D.I.
PE-15	Deleted												2-5-65 Rev. Par. No. 26 Rev. & 27	D.I.
PE-15A	Deleted												2-5-65 Rev. Par. No. 29, 30, & 31	D.I.
16	Deleted												2-18-65 Delete Par. 29 Rev. & 30 Rev.	D.I.
PE-16	Deleted												2-18-65 Revise Par. No. 31 Rev.	D.I.
17	Deleted												8-3-65 Name change Parc. No. 31 Rev.	D.I.
													8-3-65 Add Easements	D.I.
													11-15-65 Rev. 25 Rev., PE-25, 26 Rev. 2	D.I.
													28 Rev., PE-28, PE-31A,	D.I.
													11-15-65 Delete Par. 31 Rev. 2, 31-A	D.I.
													12-7-65 Rev. Par. 21, Delete Par. 23	D.I.
													1-21-66 Rev. Par. 28 Rev.	D.I.
													2-15-66 Par. 28 Rev. 3	RP
													5-20-66 Rev. Par. 15 & Add Par. 15-A	D.I.
													9-14-67 Deleted Parcels 15A, 15 Rev. PE	---
													PE 15A, 16, PE 16, 17, 18, PE 18	---
													19, 21 Rev., PE 21 Rev., PE 21-A	---
													PE 21B, 26 Rev., 28 Rev. 3	---
													PE, 28 Rev. & Rev. Proj. No.	FCM
20	Dudley F. Taylor		W 1/2 NW 1/4 NW 1/4 Sec 5	10.674	9.146	7.364							8-25-89 Add Remarks to Par. 20, 22, 24, 25, 27	DE
21 Rev.	Deleted													
PE-21 Rev.	Deleted													
PE-21A	Deleted													
PE-21B	Deleted													
22	James S & Edna E. Chew		NW 1/4 NW 1/4 Sec 5	0.094	0.094	0.406							Deeded to Army Corp of Engineers	22
23	Deleted													
24	Helen R. Baker & Frank D. Baker, J.T.		NW 1/4 NE 1/4 Sec 5	3.506	3.506	0.145	0.621							
PE-24	Helen R. Baker & Frank D. Baker, J.T.		T. 5 S., R. 69 W.	0.092	0.092								Ditch Easement	
25 Rev. 2	Helen R. Baker & Frank D. Baker, J.T.		NW 1/4, W 1/2 NE 1/4, N 1/2 SW 1/4, W 1/2 SE 1/4 Sec 32, T. 4 S., R. 69 W.	0.469	0.469	325.920							Deeded Army Corp of Engineers	
PE-25 Rev.	Helen R. Baker & Frank D. Baker			0.282	0.282								Ditch Easement	See ROW Proj. CCII-0008-27
26 Rev. 3	Deleted													
27 Rev.	Alvin Stjernholm & Elsie May Stjernholm		E 1/2 SE 1/4 Sec 32 T. 4 S., R. 69 W. T. 5 S., R. 69 W.	0.254	0.254	1764							Deeded back to owner Recep. No. 81070526	27 Rev.
28 Rev. 3	Deleted													
PE-28 Rev.	Deleted													
29 Rev.	Deleted													
30 Rev.	Deleted													
31 Rev. 2	Deleted													
31A	Deleted													
PE-31A Rev.	Kenneth G. Peterson & Carol Ann Peterson		S. W 1/4 Sec 32, T. 4 S., R. 69 W. Bear Creek Ranchettes, Filing 2	0.119	0.119								Ditch easement	

R. O. W. TABULATION OF PROPERTIES IN JEFFERSON COUNTY S.H.No. 70 PROJ. F 016-1(20)SEC.1

FEDERAL ROAD DIVISION NO.	DISTRICT	PROJECT NO.	SHEET NO.
0	COLORADO	F 016-1(20)SEC.1	2 B

RIGHT OF WAY HAMPDEN AVE - WEST OF KIPLING

PARCEL NO.	OWNER	ADDRESS	LOCATION	AREA IN ACRES				PURCHASE DATA					REMARKS	NO.		
				PARCEL	TO BE ACQUIRED	REMAINDER		LAND	IMPROV'M'TS	DAMAGE	MISC.	TOTAL				
						LT.	RT.									
32 Rev 2	Deleted		T4S, R69W													
PE-32 Rev	Deleted															
32-A	Deleted															
PE-32A	Kenneth G. Peterson & Carol Ann Peterson		Lot 4, Blk. 5 Bear Creek Ranchettes Filing 2	0.161	0.161									Easmt. for Ditch		
PE-33 Rev	Deleted															
33 Rev 2	DELETED															
Rev 33-A	Bear Creek Valley Development Co.		N.W. 1/4 Sec. 4, T5S, R69W	0.124	0.096	-	2.340							Remainder in N.W. 1/4		
34	Andrew F. Shugart & Orletta A. Shugart, J.T.		NW 1/4 NE 1/4 Sec 4	0.045	0.045	-	3.460									
PE-34	Andrew F. Shugart & Orletta A. Shugart, J.T.		T5S, R69W	0.009	0.009									Easmt. for Ditch		
35	Deleted		T5S, R69W													
PE-35	Deleted															
36	Watrous C. Redfield & Aleen J. Redfield, JT		SE 1/4 Sec 33, T4S, R69W	5.120	4.459	119.118	-									
PE-36	Watrous C. Redfield & Aleen J. Redfield, J.T.		SE 1/4 Sec 33, T4S, R69W	0.457	0.457									Easmt. for Ditch		
37 Rev	E. L. Montgomery & Violet M. Montgomery, J.T.		SE 1/4 Sec 33, T4S, R69W	4.524	4.104	14.189										
	Sale contract to Charles Winters															
PE-33A	Bear Creek Valley Development Co.		N.W. 1/4, Sec 4, T5S, R69W	0.019	0.019									Easmt. for Ditch		
PE-37	E.L. Montgomery & Violet M. Montgomery		S.E. 1/4 Sec 33, T4S, R69W	0.011	0.011									Easmt. for Ditch		

REVISIONS		
2-5-65	Rev. Par. No. 32	D.1
3/3/65	Rev. Par. No. 33 & 37	D.1
3/3/65	Add. Par. No. 35-A	D.1
3/17/65	Add. Easements	D.1
1/15/65	Rev. Par. 32 Rev. PE-32, PE-32A	
	33 Rev. & PE-33	D.1
1/15/65	Deleted Par. 32-A	D.1
12/9/65	Name Rev. Par. 36 & PE 36	D.1
1-21-66	Rev. Par. 33-A	D.1
2/15/66	Delete Par. 33	R.P.
9-14-66	Deleted 32 Rev 2, PE 32 Rev.	
	PE 33 Rev. 35 & PE 35 &	
	Rev. Proj. No.	FCM

S.W. 1/4 Sec. II
T.5 S., R.70 W.

MORRISON APPROACH

REVISIONS				
8-26-65	Head-up ink line	D.I.		
11-15-65	Name change Proj. 1A	D.I.		
9-14-67	Rev. Proj. No.	FCM		

FILE NO.	DIVISION	PROJ. NO.	SHEET NO.	TOTAL SHEETS
9	COLO.	FO16-1(20)Sec.1	3	

Sta. 503+67.8 (Proj.) Begin FO15-1(20) 3' Lt. of
Sta. 503+67.0 (Surv.) End FO16-1(14)

50' Temporary Easement
for Construction

Morrison App.
As 43.19' Lt.
Ls 47.33'
Es 74.3'
24° 19'
8° 00'
154.3'
304.0'
716.25'

(Proj.)
Gs 12'00'
Ls 300.0'
LT 200.46'
ST 100.42'

E MORRISON APPROACH
Project No. FO16-1(14)

Colo. Central Power Co.
R.O.W. on Proj. F.016-1(14)

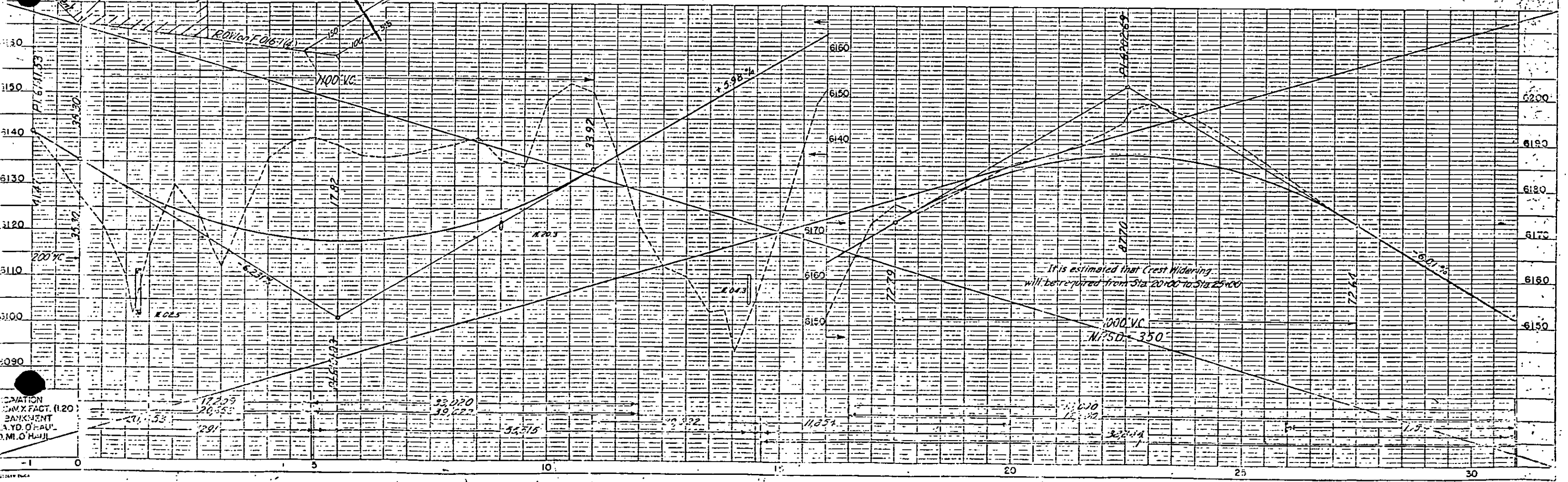
Mountain States Tel. & Tel. Co.

(I-A) Eunice Eileen Ford

S.E. 1/4 Sec. II
T.5 S., R.70 W.

Hor.S.D.=680'
S=.08
M.D.S.=65 M.P.H.

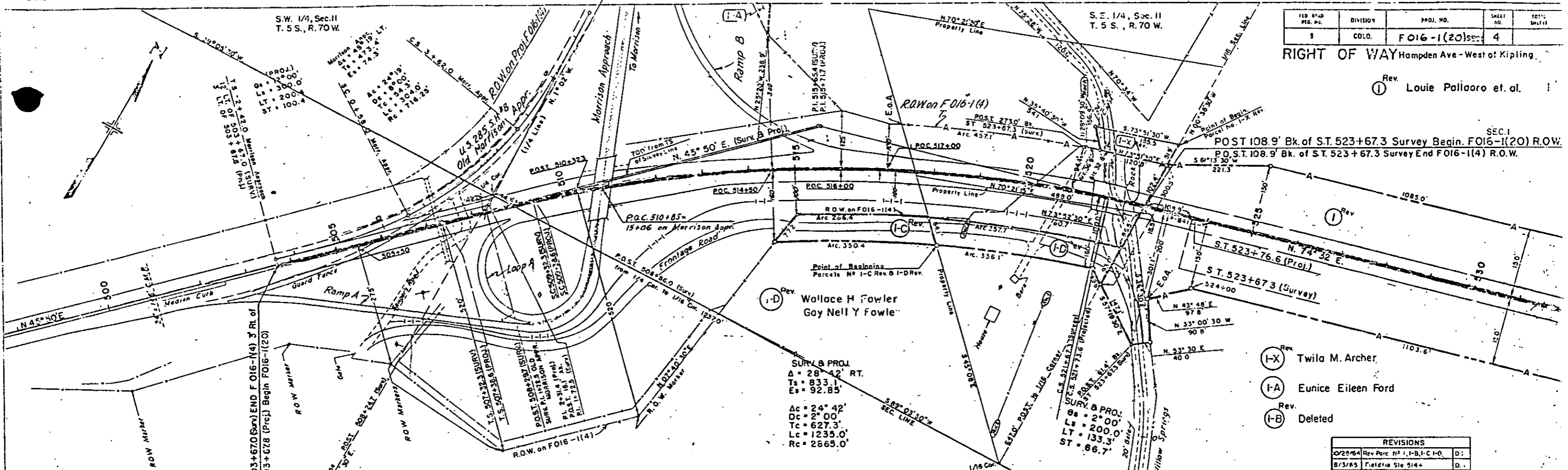
CLEARING & GRUBBING
Approach to Scattered brush & Juniper trees.



ADJUTANT
CAMPY. FACT. (1.20)
BANKMENT
A.Y.D. OF PAU'
M.I.O.H.U.

JOB NO.	DIVISION	PROJ. NO.	SHEET NO.	TOTAL SHEETS
5	COLO.	FO16-1(20)Sec. 4	4	

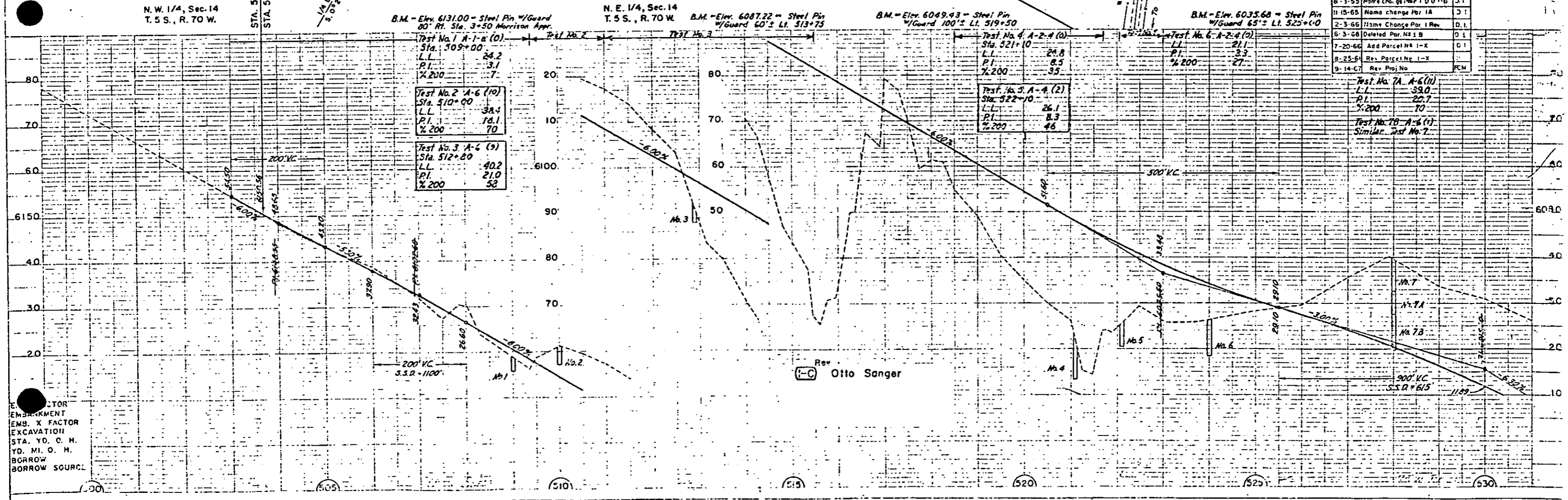
Rev. Louie Poliaoro et al.



SURV. & PROJ.
 Δ = 28° 42' RT.
 Ts = 833.1
 Es = 92.85
 Ac = 24° 42'
 Dc = 2° 00'
 Tc = 627.3'
 Lc = 1235.0'
 Rc = 2665.0'

- (I-X) Twila M. Archer
- (I-A) Eunice Eileen Ford
- (I-B) Deleted

REVISIONS			
02/28/64	Rev. Parc. No. 1, I-B, I-C, I-D	D	I
8/3/65	Fieldnote Sta 514+	D	-
8-3-55	Name change Parc. I-D to I-B	I	I
11-15-65	Name change Parc. I-A	I	I
2-3-66	Name Change Parc. I Rev	D	I
5-3-56	Deleted Parc. No. 1 B	D	I
7-20-66	Add Parcel No. I-X	D	I
8-25-61	Rev. Parcel No. I-X	I	I
9-14-67	Rev. Proj. No.	FCM	



Rev. Otto Sanger

EMBRANKMENT
 EMB. X FACTOR
 EXCAVATION
 STA. YD. C. H.
 YD. MI. O. H.
 BORROW
 BORROW SOURCE

FED. ROAD DIST. NO.	DIVISION	PROJ. NO.	SHEET NO.	TOTAL SHEETS
9	COLO.	FOIG-1(20)Sec 1	5	

RIGHT OF WAY

Hampden Ave - West of Kipling

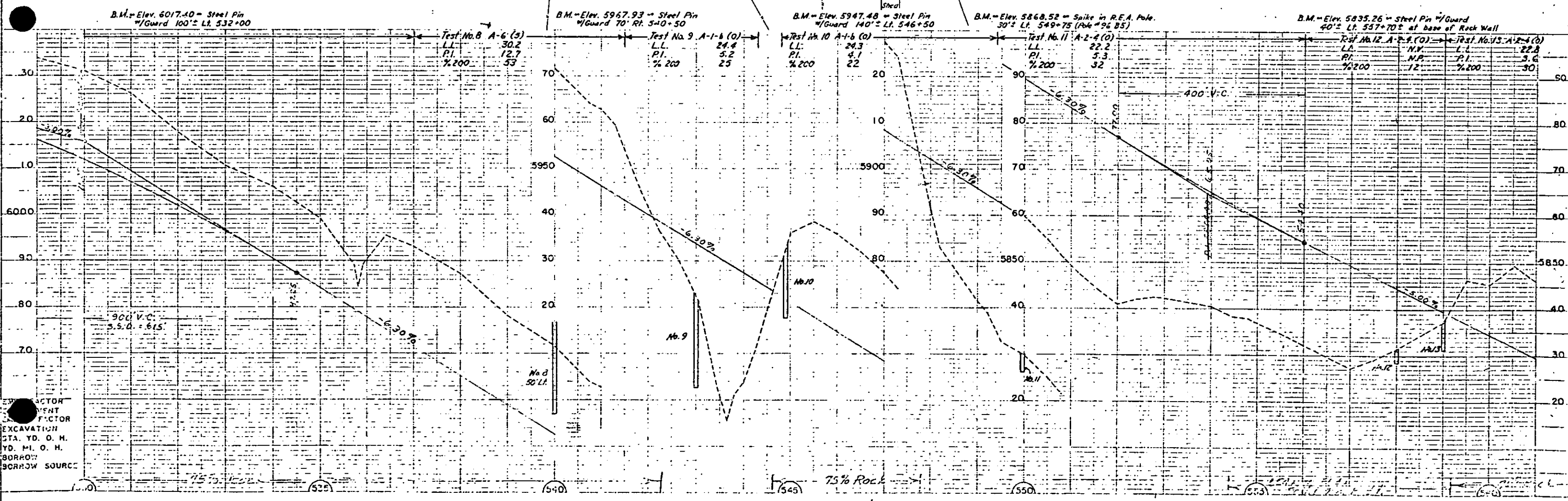
$\theta_s = 3^\circ 00'$
 $L_s = 200.0'$
 $LT = 133.3'$
 $ST = 66.7'$
 $Xc = 199.95'$
 $Yc = 3.49'$
 $\Delta = 27^\circ 26' 30''$ LI
 $T_s = 566.5'$
 $\Delta c = 21^\circ 26' 30''$
 $Dc = 3^\circ 00'$
 $Tc = 361.6'$
 $Lc = 714.7'$
 $Rc = 1910.0'$
 $E_s = 57.01'$

$\theta_s = 3^\circ 00'$
 $L_s = 200.0'$
 $LT = 133.3'$
 $ST = 66.7'$
 $Xc = 199.95'$
 $Yc = 3.49'$

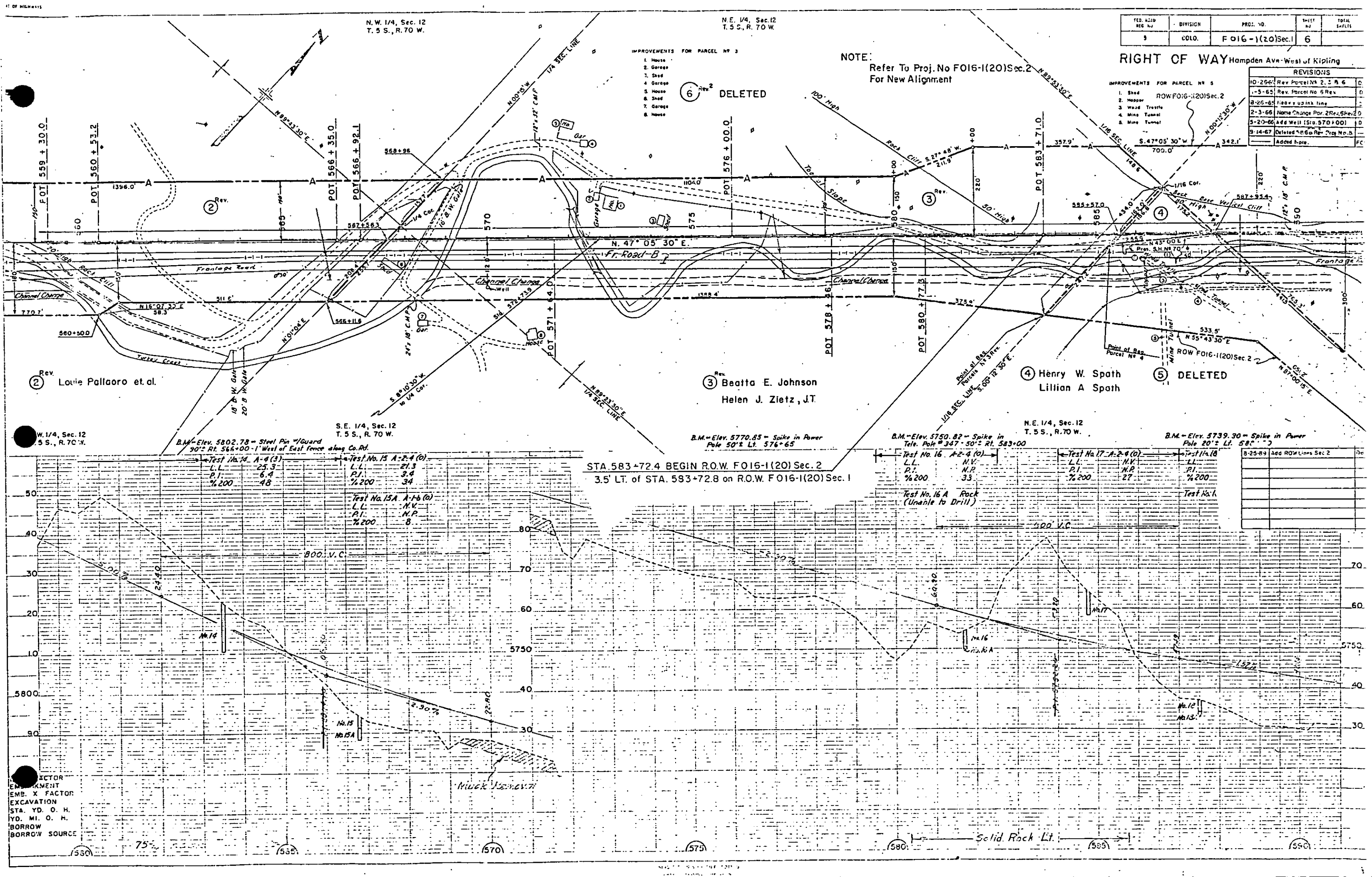
REVISIONS		
10/27/64	Rev. Parcels No 1 & 2	D.I.
12/1/64	Add Easements	D.I.
3/3/65	A-d Topog. with 1/4" Scale	J
8/27/65	Add PE-2A	D.I.
2-3-65	Name change 1 Rev. 2 Rev.	
	PE-2A	D.I.
9/14/67	Rev. Proj. No.	ESV

- ① Rev. Louie Pallaoro et. al.
- ② Rev. Louie Pallaoro et. al.

PE-2A ② Rev. Louie Pallaoro et. al.



EXCAVATION
 STA. YD. O. H.
 YD. M. O. H.
 BORROW SOURCE



N.W. 1/4, Sec. 12
T. 5 S., R. 70 W.

N.E. 1/4, Sec. 12
T. 5 S., R. 70 W.

FED. ACID REC. NO.	DIVISION	PROJ. NO.	SHEET NO.	TOTAL SHEETS
5	COLO.	FO16-1(20)Sec.1	6	

RIGHT OF WAY Hampden Ave - West of Kipling

- IMPROVEMENTS FOR PARCEL NO 3
1. House
 2. Garage
 3. Shed
 4. Garage
 5. House
 6. Shed
 7. Garage
 8. House

NOTE:
Refer To Proj. No FO16-1(20)Sec.2
For New Alignment

IMPROVEMENTS FOR PARCEL NO 5

1. Shed
2. Hopper
3. Wood Trestle
4. Mine Tunnel
5. Mine Tunnel

ROW FO16-1(20)Sec.2

REVISIONS	NO.	DATE	DESCRIPTION
10-25-64	Rev. Parcel No. 2, 3, 4, 6		
1-5-65	Rev. Parcel No. 5		
8-26-65	Change up ink line		
2-3-66	Name Change Par. 2 Rev. Sheet 2		
5-20-66	Add Well (Sta. 570+00)		
9-14-67	Deleted 5-26-66 Rev. Proj. No. 5		
	Added here.		

Rev. 2 Lorie Pallaro et. al.

Rev. 3 Beatta E. Johnson
Helen J. Zietz, J.T.

Rev. 4 Henry W. Spath
Lillian A. Spath

Rev. 5 DELETED

S.E. 1/4, Sec. 12
T. 5 S., R. 70 W.

N.E. 1/4, Sec. 12
T. 5 S., R. 70 W.

B.M. - Elev. 5802.78 - Steel Pin w/ Guard
90' RT. 566+00 - 1' West of East Fence along Co. Rd.

B.M. - Elev. 5770.85 - Spike in Power Pole 50' Lt. 576+65

B.M. - Elev. 5750.82 - Spike in Tele. Pole # 347-50' Lt. 583+00

B.M. - Elev. 5739.30 - Spike in Power Pole 20' Lt. 582+00

STA. 583+72.4 BEGIN R.O.W. FO16-1(20) Sec. 2
3.5' LT. of STA. 583+72.8 on R.O.W. FO16-1(20) Sec. 1

Test No. 14 A-4 (3)

L.L.	25.3
P.I.	6.4
% 200	48

Test No. 15 A-2.4 (0)

L.L.	21.3
P.I.	3.4
% 200	34

Test No. 15A A-1.6 (0)

L.L.	N.V.
P.I.	N.P.
% 200	8

Test No. 16 A-2.4 (0)

L.L.	N.V.
P.I.	N.P.
% 200	33

Test No. 16A Rock (Unable to Drill)

Test No. 17 A-2.4 (0)

L.L.	N.V.
P.I.	N.P.
% 200	27

Test No. 18

L.L.	N.V.
P.I.	N.P.
% 200	27

Test No. 1

8-25-89	Add ROW Lines Sec 2	

EMPALEMENT
EMB. X FACTOR
EXCAVATION
STA. YD. O. H.
YD. MI. O. H.
BORROW
BORROW SOURCE

Solid Rock Lt.

N.E. 1/4, Sec. 12
T. 5 S., R. 70 W.

SE 1/4, Sec. 1
T. 5 S., R. 70 W.

S.W. 1/4 Sec. 6
T. 5 S., R. 69 W.

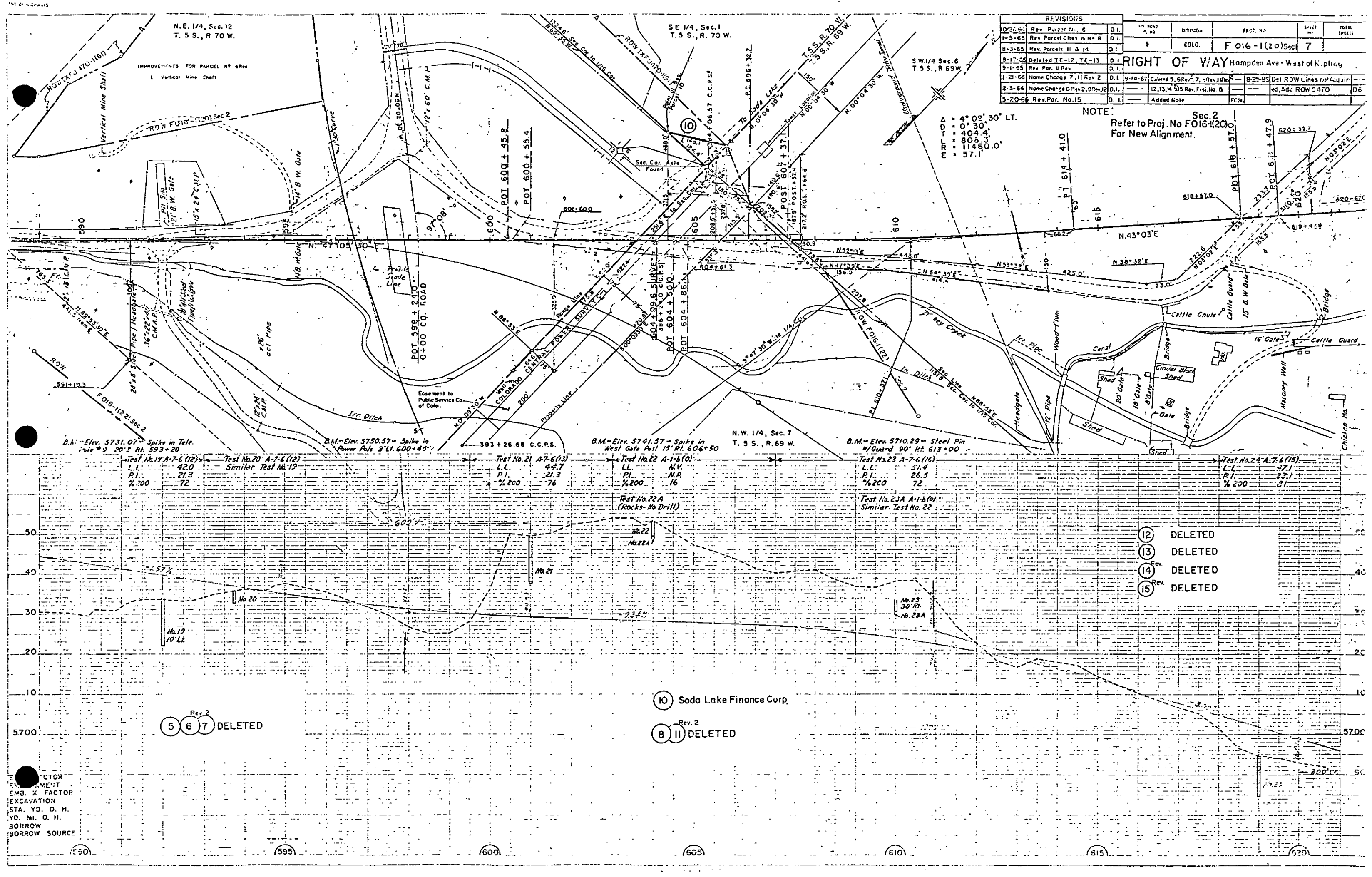
N.W. 1/4, Sec. 7
T. 5 S., R. 69 W.

REVISIONS			PROJECT INFORMATION			
10/2/26	Rev. Parcel No. 6	D.I.	NO. 404	DIVISION	PROJ. NO.	SHEET NO.
1-5-65	Rev. Parcel G Rev. B & B	D.I.	5	COLO.	F 016-1(20) Sec 7	TOTAL SHEETS
8-3-65	Rev. Parcels II & 14	D.I.				
9-17-65	Deleted TE-12, TE-13	D.I.				
9-1-65	Rev. Par. II Rev.	D.I.				
1-21-66	Name Change 7, II Rev 2	D.I.	9-14-67	Colored 5, 6 Rev 7, 8 Rev 1	8-25-85	Del. ROW Lines not Acquir.
2-3-66	Name Change C Rev 2, 8 Rev 2	D.I.		12, 13, 14 515 Rev. Proj. No. B		ed, Add. ROW C470
5-20-66	Rev. Par. No. 15	D.I.		Added Note	PCSA	D6

RIGHT OF WAY Hampden Ave - West of Kipling

NOTE:
Refer to Proj. No FO16-1(20)
For New Alignment.

- A = 4° 02' 30" LT.
- D = 0° 30'
- T = 404.4'
- R = 808.3'
- E = 1146.0'



B.M. - Elev. 5731.07 - Spike in Tele. Pole # 9 20' S. Rt. 593+20

B.M. - Elev. 5750.57 - Spike in Power Pole 3' Lt. 600+45

B.M. - Elev. 5741.57 - Spike in West Gate Post 15' Rt. 606+50

B.M. - Elev. 5710.29 - Steel Pin w/ Guard 90' Rt. 613+00

Test No. 19 A-7-6 (12)
L.L. 42.0
P.I. 21.3
%200 72

Test No. 20 A-7-6 (12)
Similar Test No. 19

Test No. 21 A-7-6 (13)
L.L. 44.7
P.I. 21.3
%200 76

Test No. 22 A-1-b (0)
L.L. N.V.
P.I. N.P.
%200 16

Test No. 23 A-7-6 (15)
L.L. 51.4
P.I. 26.5
%200 72

Test No. 24 A-7-6 (15)
L.L. 57.1
P.I. 25.1
%200 31

Test No. 22A (Rocks - No Drill)

Test No. 23A A-1-b (0) Similar Test No. 22

Rev. 2
5 6 7 DELETED

10 Soda Lake Finance Corp.
Rev. 2
8 11 DELETED

12 DELETED
13 DELETED
14 DELETED
15 DELETED

ACTOR
MENT
EMB. X FACTOR
EXCAVATION
STA. YD. O. H.
YD. MI. O. H.
BORROW
BORROW SOURCE

NE 1/4 Sec. 12
T.5 S., R.70 W.

NW 1/4 Sec. 7
T.5 S., R.69 W.

RIGHT OF WAY Hampden Ave - West of Kipling
CONNECTION S.H. No 70 TO CROSSROAD
AT STA. 596+
~~ALSO FUTURE INTERCHANGE S.H. No 70 & INTERSTATE~~

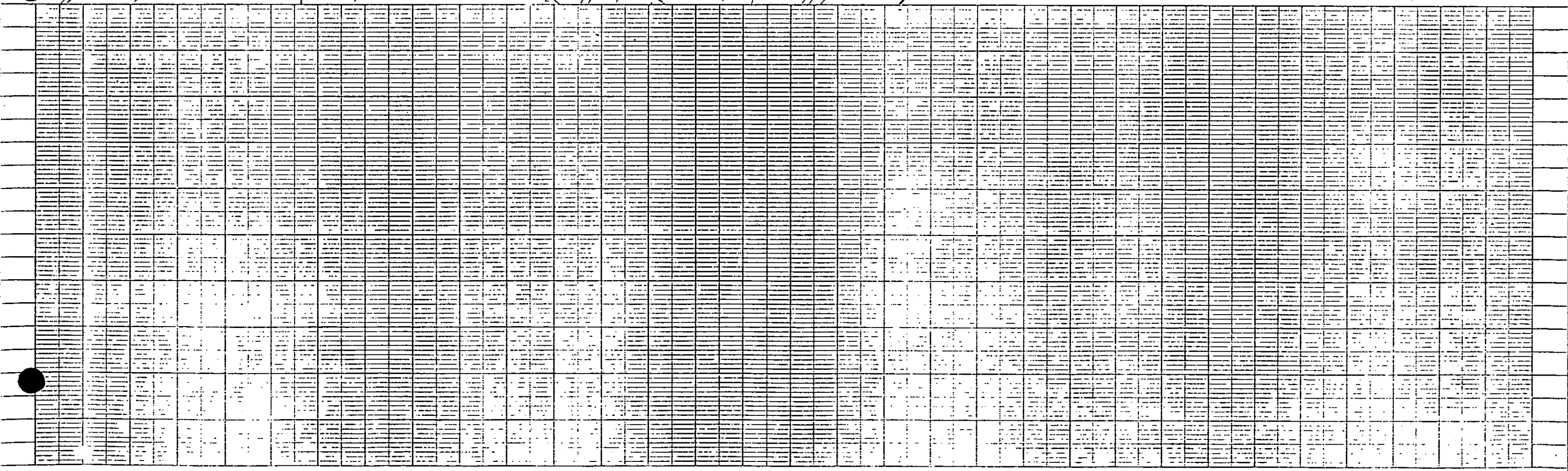
FEDERAL ROAD DISTRICT NO.	DIVISION	PROJECT NO.	SHEET NO.
9	COLORADO	F 016-1 (20) SEC. 1	7-A

REVISIONS		
10/26/64	Rev. Parcel No. 6	D.I.
1-3-65	Rev. Parcel No 6 Rev B No. 8	D.I.
1-5-65	Deleted Parc. 9 B 12-A	D.I.
5-26-65	rev. up inkline	D.I.
1-21-66	Name Change Par 7	D.I.
2-3-66	Name Change 6 Rev 2, 8 Rev	D.I.
9-14-67	Deleted 5 Rev. 2, 7, 8 Rev. Added	D.I.
	Name & Rev. Proj. No.	FCM
8-25-89	Added C470 B Sec 2 ROW	D.G.

- Rev. 2
- 6 Deleted
- 7 Deleted
- 8 Deleted
- 9 Deleted
- 12-A Deleted

NOTE:
Refer to Proj. F016-1(20)Sec. 2
For New Alignment.

SE 1/4 Sec. 1
T.5 S., R.70 W.



N. E. 1/4, Sec. 6
T. 5 S., R. 69 W.

NOTE:
Refer To Proj. No. FC16-1(20) Sec. 2
For New Alignment.

PROJECT NO.	DIVISION	PROJECT	DATE	SCALE
9	C.O.D.	FC16-1(20)Sec.1	9	

RIGHT OF WAY
Hampton Ave - West of Kipling

(16) Deleted
PE-15

(17) Deleted

(18) Deleted
PE-18

(19) DELETED

(20)

(22)

$\Delta = 18^\circ 34' RT$
 $Es = 38.7'$
 $Ts = 560.37'$
 $Dc = 14^\circ 34'$
 $Tc = 2^\circ 00'$
 $Lc = 368.18'$
 $Rc = 728.3'$
 $Rc = 2665.0'$

$\theta_s = 2^\circ 00'$
 $LT = 133.3'$
 $ST = 66.7'$
 $L_s = 200.0'$

$\Delta = 16^\circ 07' RT$
 $D = 01^\circ 00'$
 $T = 811.2'$
 $L = 1611.7'$
 $R = 5730.0'$
 $E = 57.1'$

B.M. - Elev. 5623.29 - Spike in Tele.
Pole 18' Lt. 654+50

B.M. - Elev. 5614.53 - Spike in Tele.
Pole 18' Lt. 661+15

B.M. - Elev. 5601.82 - Spike in West Gate Post 50' Lt. 666+90

N.W. 1/4, Sec. 5
T. 5 S., R. 69 W. B.M. - Elev. 5576.48 - Spike in Tele. Pole 45' Lt. 673+00

Test No. 27 A-2-4 (C)
 L.L. 28.0
 P.I. 9.8
 %200 13

Test No. 27A A-6 (C)
 L.L. 41.9
 P.I. 22.6
 %200 11

Test No. 28 A-1-6 (C)
 L.L. 19.2
 P.I. 2.2
 %200 16

Test No. 29 A-2-7 (C)
 L.L. 45.4
 P.I. 22.5
 %200 28

Test No. 30 A-6 (C)
 L.L. 33.8
 P.I. 17.1
 %200 53

Test No. 30A A-1-6 (C)
 Similar Test No. 28

REVISIONS	
8-3-65	Rev. PE-18
12-7-65	Rev. Parcel 21
9-14-67	Deleted 15, PE-15, 17, 18
	PE-18 Rev. 19, 21 Rev., Rev.
	Proj. No. B Added Note
5-25-99	CROSS LINES NOT ACQUIRED
	ACQUIRED Add Note Per
205 27	26

- (20) Dudley F. Taylor Deeded to CORP of Stephen J. Bowling Engineer
- (21) Deleted
- (22) James S. Chew Deeded to CORP of Edna E. Chew, JT. Engineer

EMP. FACTOR
 SLOPE FACTOR
 EXCAVATION
 STA. YD. O. H.
 YD. MI. O. H.
 BORROW
 BORROW SOURCE

FEDERAL ROAD REGION NO.	DISTRICT	PROJ. NO.	SHEET NO.	TOTAL SHEETS
5	COLORADO	FO16-1(20)Sec. 2	9A	

RIGHT OF WAY Hampden Ave - West of Kipling

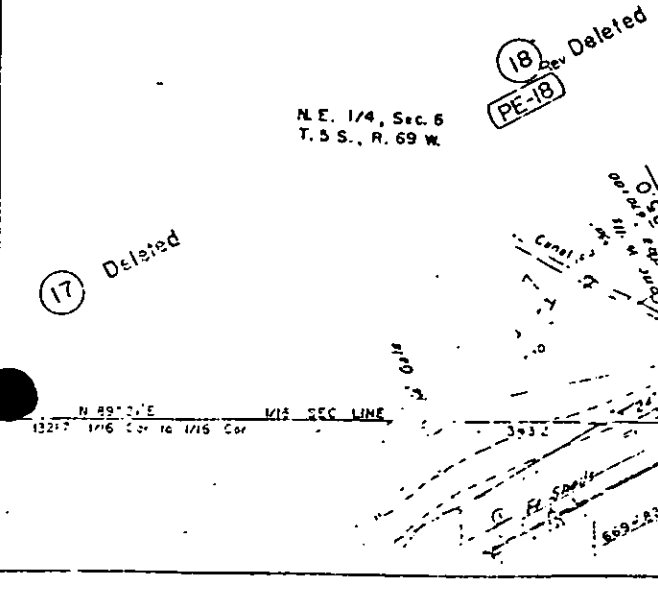
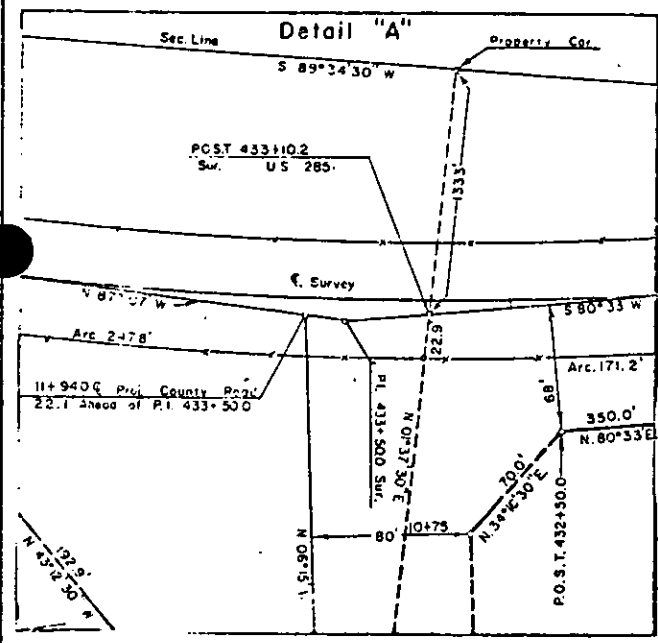
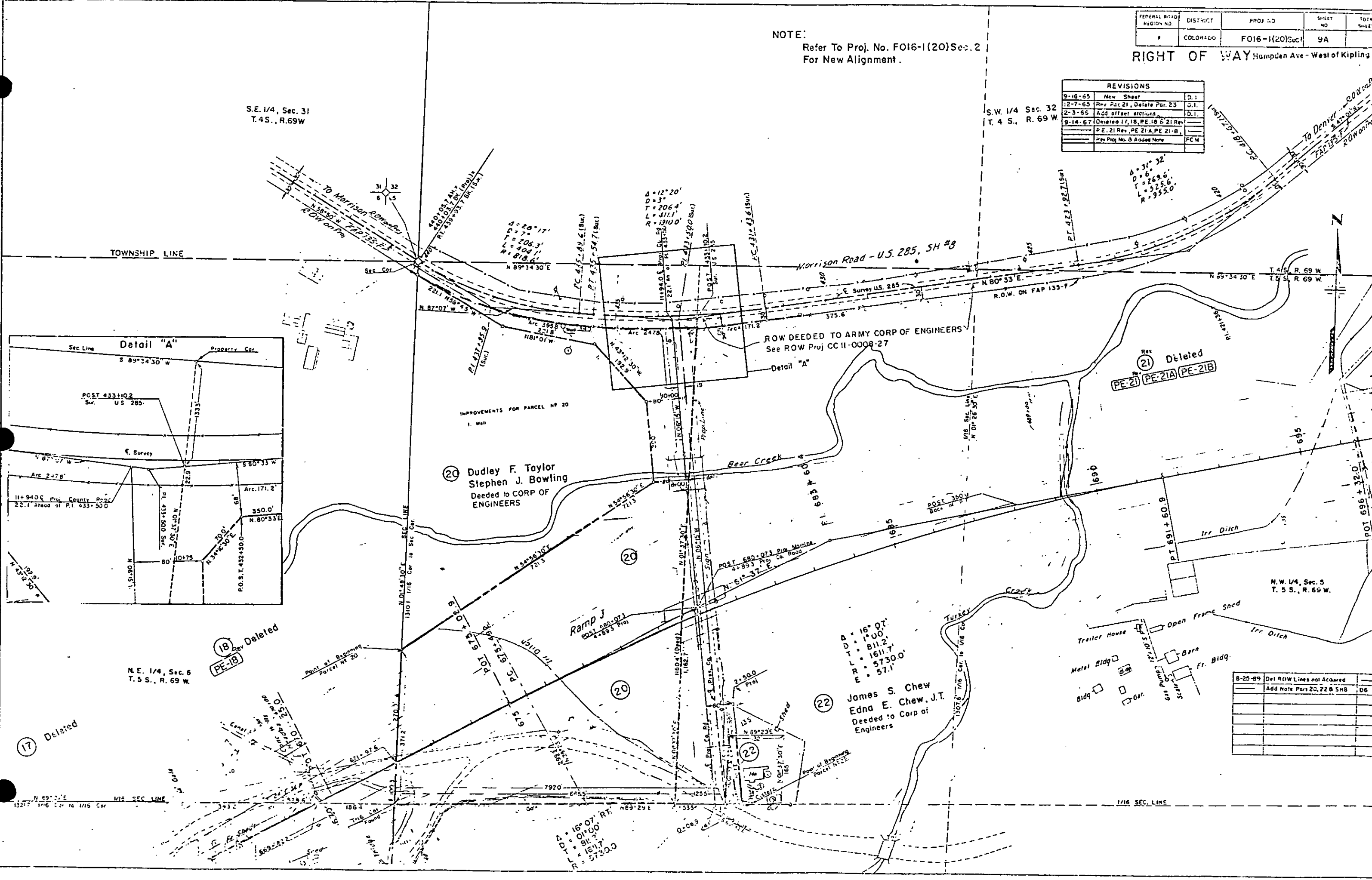
NOTE:
Refer To Proj. No. FO16-1(20)Sec. 2
For New Alignment.

REVISIONS		
9-16-65	New Sheet	D.I.
12-7-65	Rev. Par. 21, Delete Par. 23	D.I.
2-3-66	Add offset stations	D.I.
9-14-67	Created 17, 18, PE 18 & 21 Rev.	
	P. E. 21 Rev., PE 21 A, PE 21 B,	
	Rev Proj. No. & Aced Name	FCM

S.E. 1/4, Sec. 31
T. 4 S., R. 69 W

S.W. 1/4 Sec. 32
T. 4 S., R. 69 W

A = 31° 32'
D = 6'
L = 269.6'
R = 955.0'



B-25-89	Del ROW Lines not Acquired	
	Add Note Pars 20, 22 & 5MB	D6

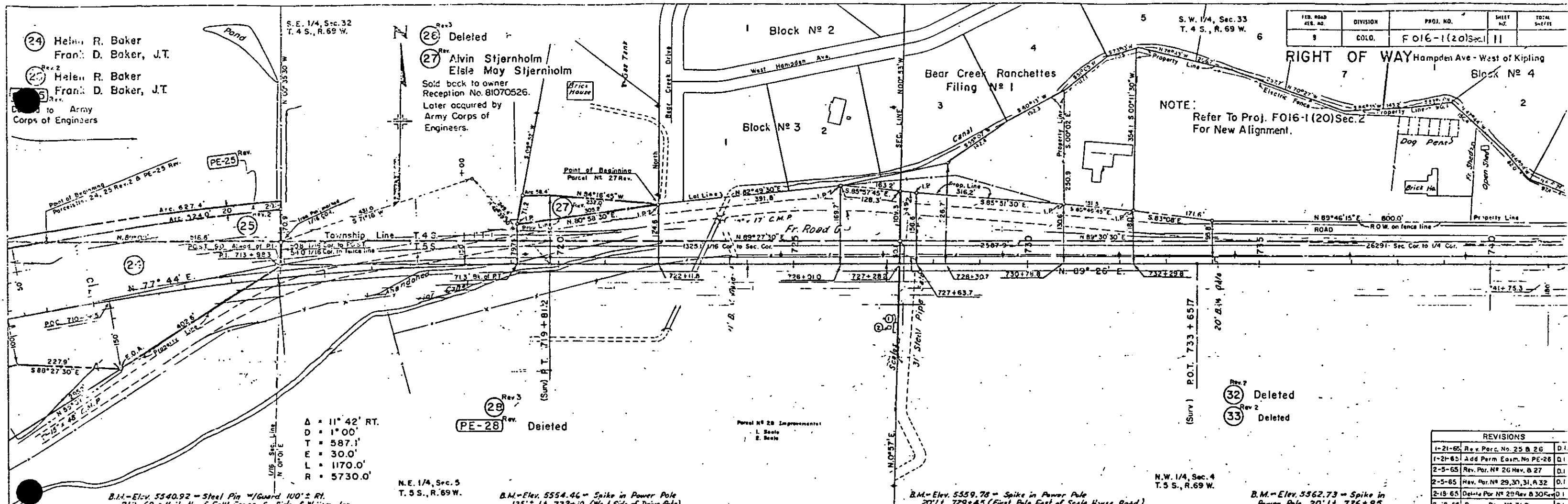
(24) Helen R. Baker
 Fran: D. Baker, J.T.
 (25) Helen R. Baker
 Fran: D. Baker, J.T.
 to Army
 Corps of Engineers

(26) Deleted
 (27) Alvin Stjernholm
 Elsa May Stjernholm
 Sold back to owner
 Reception No. 81070526.
 Later acquired by
 Army Corps of
 Engineers.

FED. ROAD AEG. NO.	DIVISION	PROJ. NO.	SHEET NO.	TOTAL SHEETS
9	COLO.	F016-1(20)Sec.1	11	

RIGHT OF WAY Hampden Ave - West of Kipling

NOTE:
Refer To Proj. F016-1(20)Sec.2
For New Alignment.

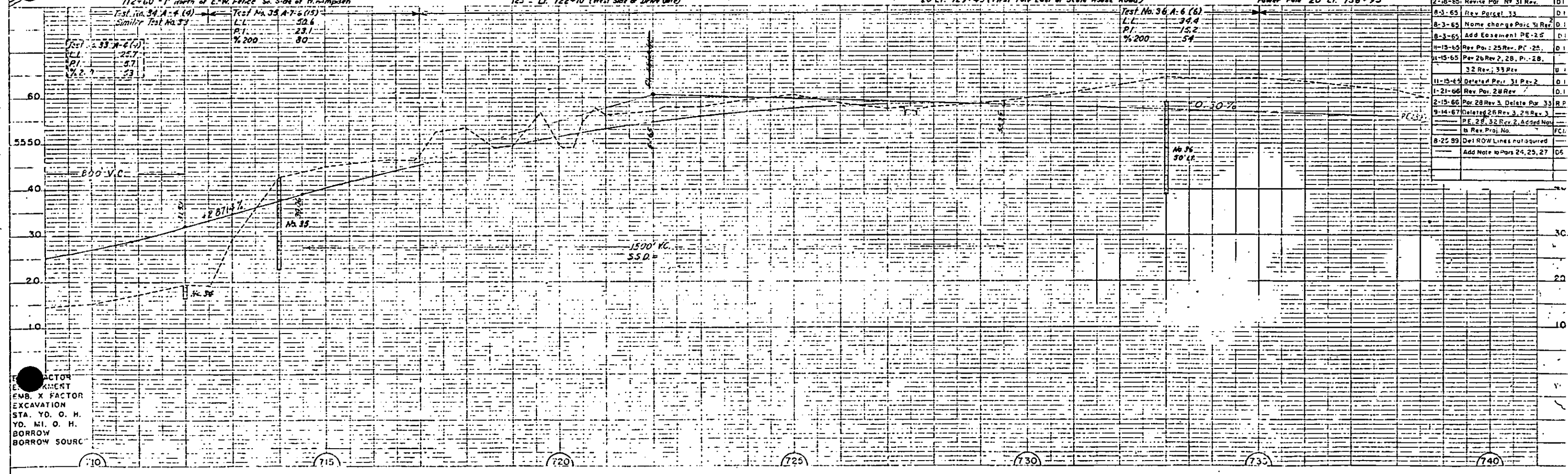


- Δ = 11° 42' RT.
- D = 1° 00'
- T = 587.1'
- E = 30.0'
- L = 1170.0'
- R = 5730.0'

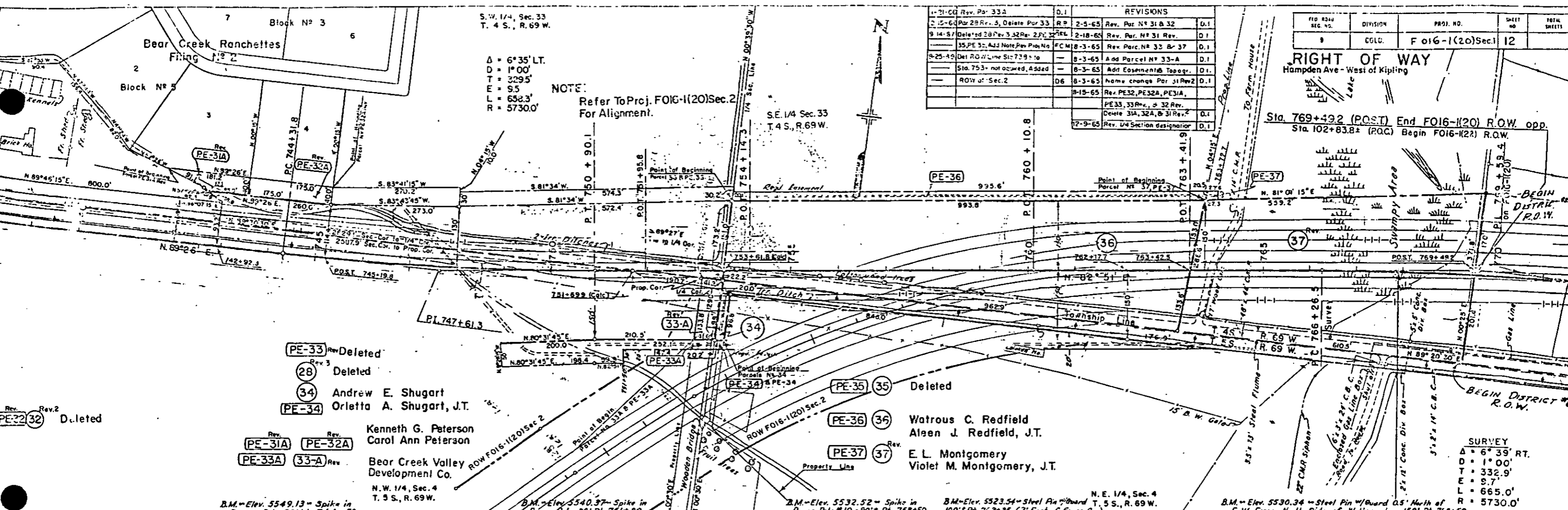
(28) Deleted

(32) Deleted
 (33) Deleted

REVISIONS		
1-21-65	Rev. Parc. No. 25 & 26	D.I.
1-21-65	Add Perm Eas. No PE-28	D.I.
2-5-65	Rev. Par. No. 26 Rev. B 27	D.I.
2-5-65	Rev. Par. No. 29, 30, 31, A 32	D.I.
2-18-65	Delete Par. No. 29 Rev. B 30 Rev. D 1	D.I.
2-18-65	Revise Par. No. 31 Rev.	D.I.
8-3-65	Rev. Parcel 33	D.I.
8-3-65	Name change Parc. 31 Rev.	D.I.
8-3-65	Add Easement PE-25	D.I.
11-15-65	Rev. Par. No. 25 Rev. P. 25	D.I.
11-15-65	Rev. 26 Rev. 2, 28, P. 28.	D.I.
	32 Rev. 33 Rev.	U.I.
11-15-65	Delete Par. 31 Rev. 2	D.I.
1-21-66	Rev. Par. 28 Rev.	D.I.
2-15-66	Par. 28 Rev. 3, Delete Par. 33	R.P.
9-14-67	Delete 26 Rev. 3, 25 Rev. 3	
	PE. 28, 32 Rev. 2, Added Non	
	to Rev. Proj. No.	F.C.I.
8-25-89	Del ROW Lines not acquired	
	Add Note to Pars 24, 25, 27	D5



FACTOR
 EMB. X FACTOR
 EXCAVATION
 STA. YD. O. H.
 YD. MI. O. H.
 BORROW
 BORROW SOURCE



REV. NO.	DESCRIPTION	DATE	BY	REVISIONS
1-21-66	Rev. Par. 33A		D.I.	
2-15-66	Par 28 Rev. 3, Delete Par 33		R.P.	2-5-65 Rev. Par. No. 31 & 32 D.I.
9-14-67	Deleted 28 Rev. 3, 32 Rev. 2, PE 32		R.P.	2-18-65 Rev. Par. No. 31 Rev. D.I.
	35, PE 32, Add Note Rev. Plan No.		F.C.M.	8-3-65 Rev. Par. No. 33 & 37 D.I.
9-25-69	Del. ROW Line Sta. 729+10			8-3-65 Add Parcel No. 33-A D.I.
	Sta. 753+ not acquired, Added			8-3-65 Add Easement to Topogr. D.I.
	ROW of Sec. 2		D6	8-3-65 Home change Par. 31 Rev. 2 D.I.
			H-15-65	Rev. PE 32, PE 32A, PE 31A, PE 33, 33A, & 32 Rev. D.I.
				Delete 31A, 32A, & 31 Rev. 2 D.I.
				Rev. 1/4 Section designation D.I.

FED. ROAD SEC. NO.	DIVISION	PROJ. NO.	SHEET NO.	TOTAL SHEETS
9	COLL.	F 016-1(20)Sec. 1	12	

RIGHT OF WAY
 Hampden Ave - West of Kipling
 Sta. 769+49.2 (POST) End FO16-1(20) R.O.W. opp.
 Sta. 102+83.8± (P.O.C.) Begin FO16-1(20) R.O.W.

NOTE:
 Refer To Proj. FO16-1(20)Sec. 2
 For Alignment.

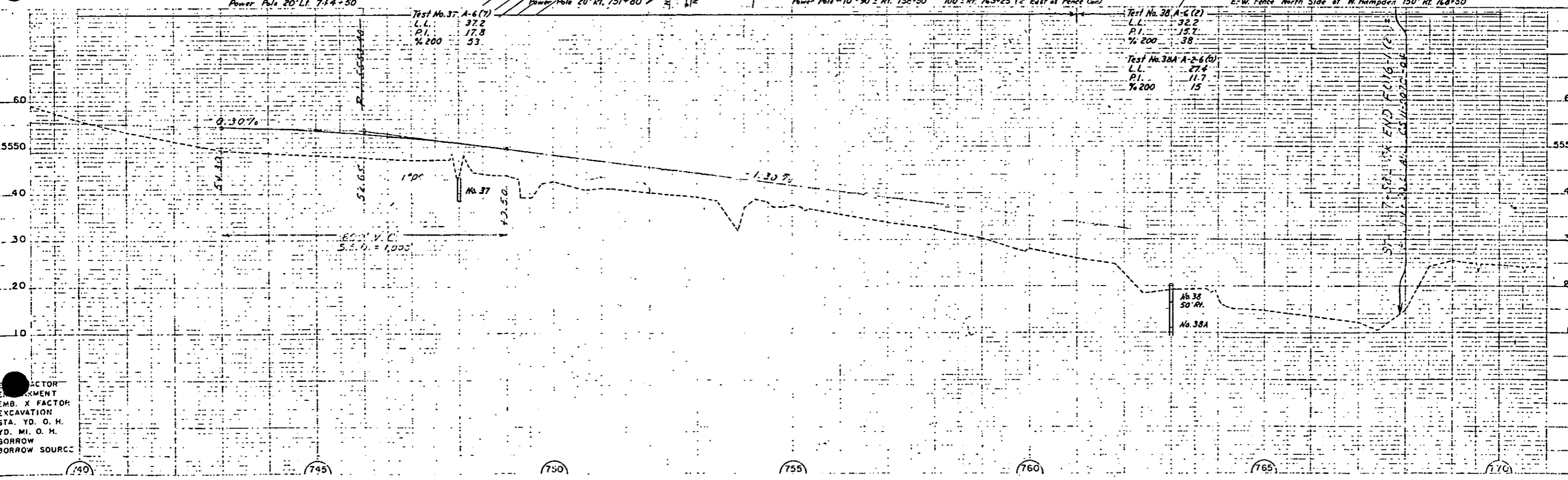
Rev. 2 Deleted
 PE-32

Rev. Deleted
 PE-33
 Deleted
 28
 Rev. 3
 34 Andrew E. Shugart
 PE-34 Orletta A. Shugart, J.T.

Rev. Kenneth G. Peterson
 Rev. Carol Ann Peterson
 PE-31A PE-32A
 Rev. Bear Creek Valley
 PE-33A 33-A Development Co.
 N.W. 1/4, Sec. 4
 T. 5 S., R. 69 W.

Deleted
 PE-35 35
 Deleted
 PE-36 36 Watrous C. Redfield
 Alen J. Redfield, J.T.
 Rev. E. L. Montgomery
 PE-37 37 Violet M. Montgomery, J.T.

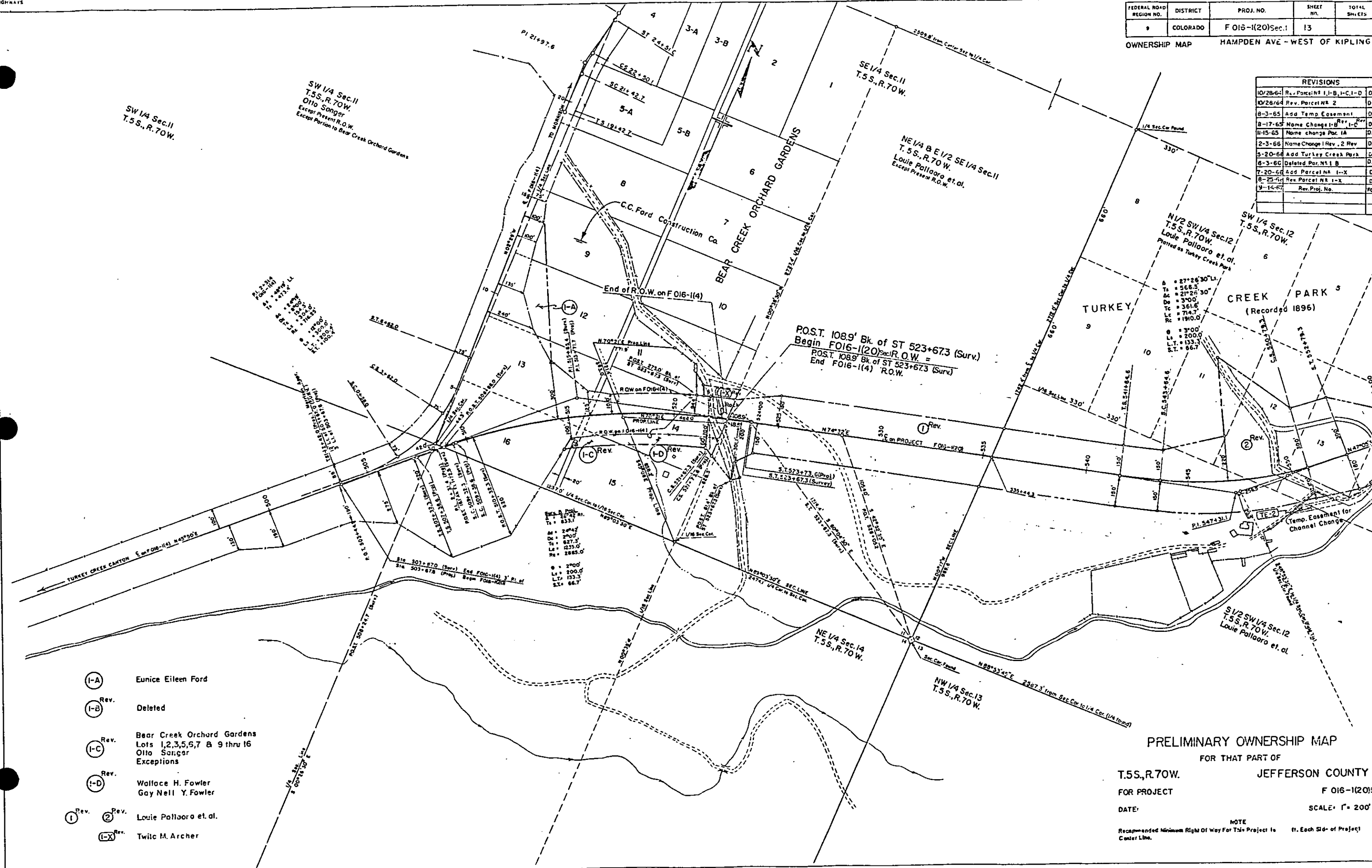
EMPACTOR
 EMBANKMENT
 EMB. X FACTOR
 EXCAVATION
 STA. YD. O. H.
 YD. MI. O. H.
 BORROW
 BORROW SOURCE



FEDERAL ROAD REGION NO.	DISTRICT	PROJ. NO.	SHEET NO.	TOTAL SHEETS
9	COLORADO	F 016-1(20)Sec.1	13	

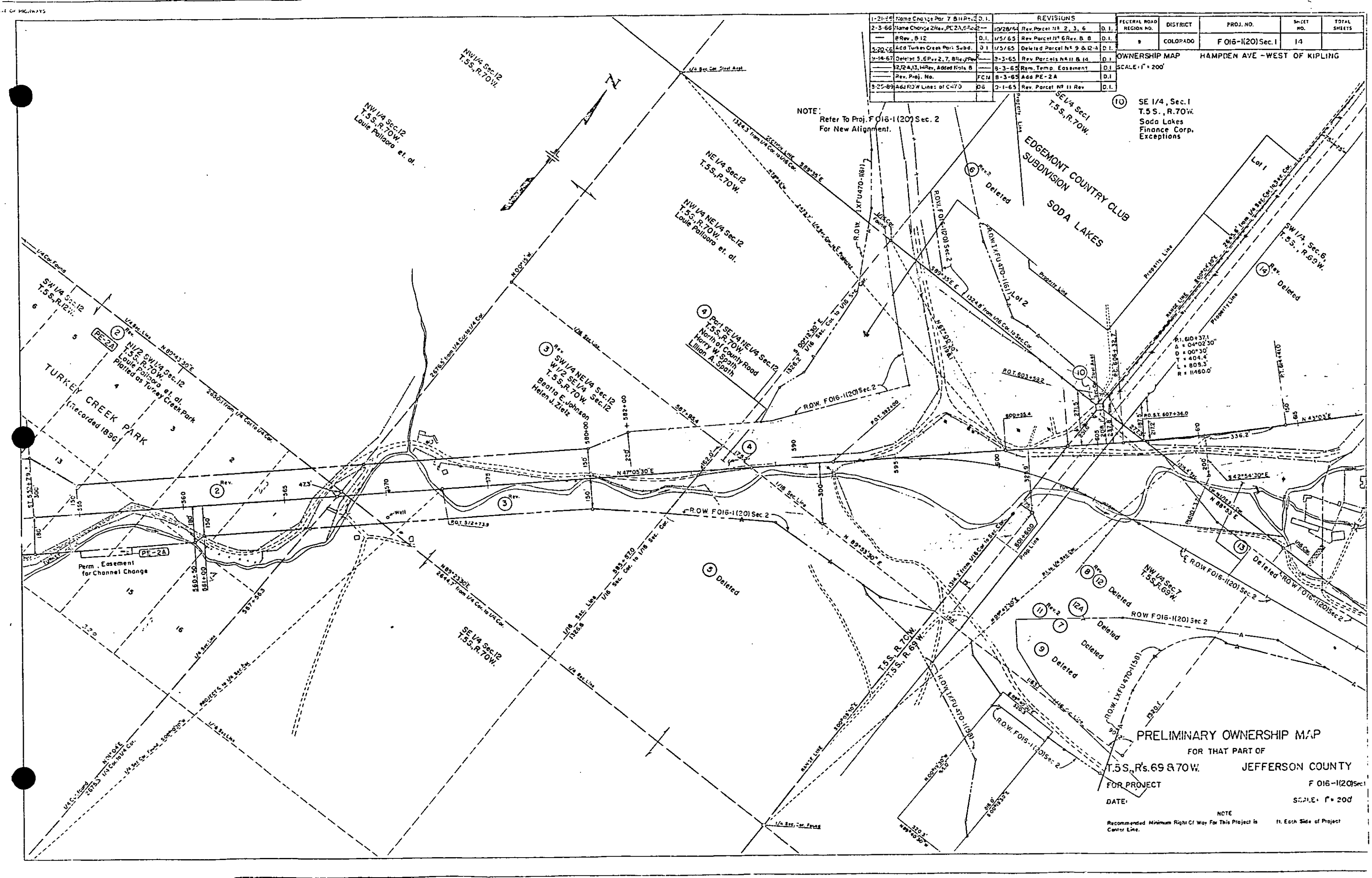
OWNERSHIP MAP HAMPDEN AVE - WEST OF KIPLING

REVISIONS		
10/28/64	Rev. Parcel N 1, I-B, I-C, I-D	D.I.
10/28/64	Rev. Parcel N 2	D.I.
8-3-65	Add Temp Easement	D.I.
8-17-65	Name Change I-B, I-C, I-D	D.I.
11-15-65	Name change Pac. 1A	D.I.
2-3-66	Name Change I Rev. 2 Rev.	D.I.
5-20-66	Add Turkey Creek Park	D.I.
6-3-66	Deleted Par. N 1 B	D.I.
7-20-66	Add Parcel N 1-X	D.I.
8-25-66	Rev. Parcel N 1-X	D.I.
9-14-67	Rev. Proj. No.	FCM



- (I-A) Eunice Eileen Ford
- (I-B) Deleted
- (I-C) Rev. Bear Creek Orchard Gardens Lots 1,2,3,5,6,7 & 9 thru 16 Otto Sanger Exceptions
- (I-D) Rev. Wallace H. Fowler Gay Nell Y. Fowler
- (1) Rev. (2) Rev. Louie Pallaro et al.
- (I-X) Rev. Twilec M. Archer

PRELIMINARY OWNERSHIP MAP
 FOR THAT PART OF
T.5S., R.70W. JEFFERSON COUNTY
 FOR PROJECT F 016-1(20)Sec.
 DATE: SCALE: 1" = 200'
 NOTE
 Recommended Minimum Right Of Way For This Project Is ft. Each Side of Project Center Line.



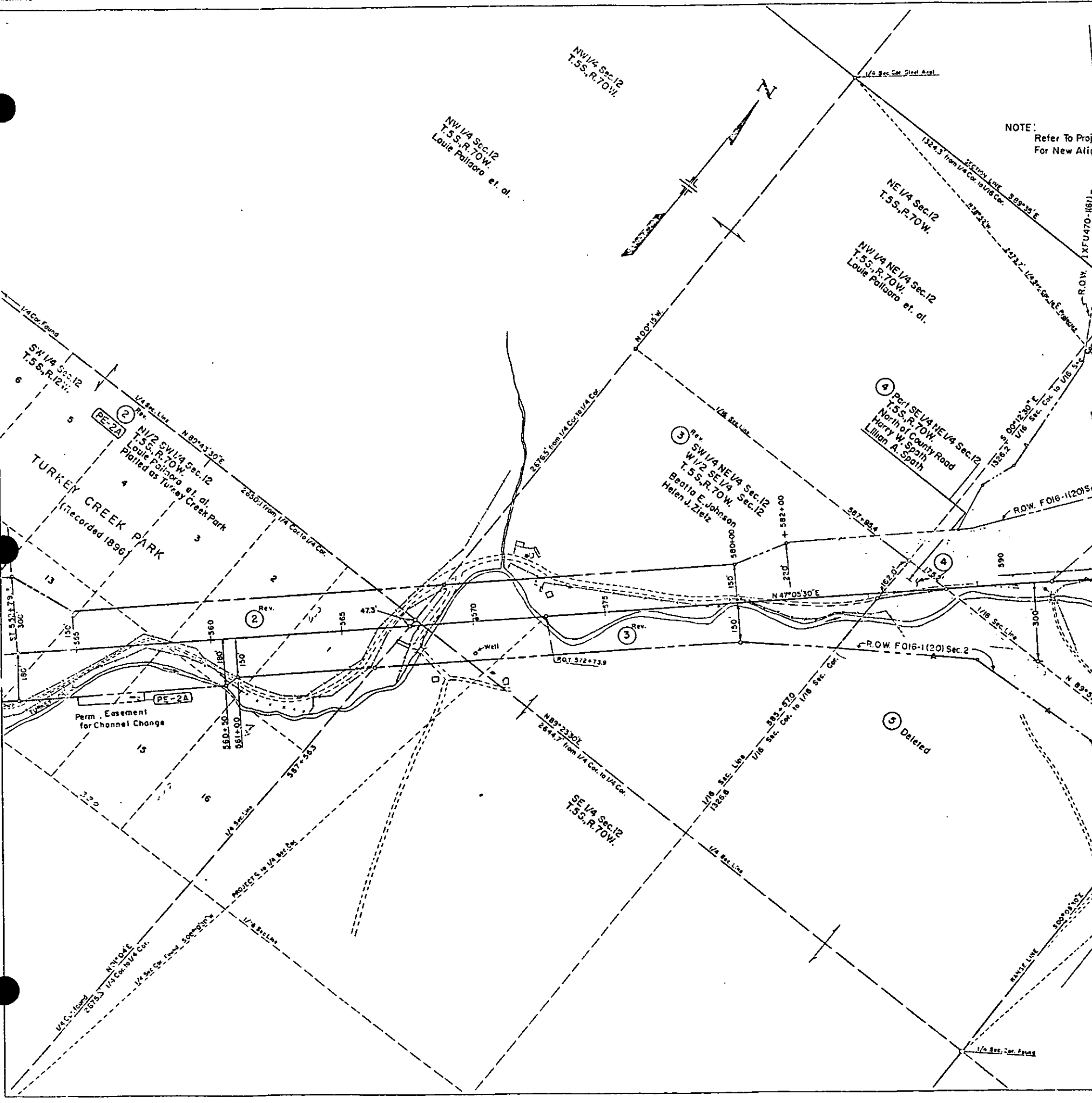
REVISIONS		FEDERAL ROAD REGION NO.	DISTRICT	PROJ. NO.	SHEET NO.	TOTAL SHEETS
1-21-55	Name Change Par 7 B 11 Rev. 2	D.I.				
2-3-66	Name Change 2 Rev. PE 2A, 5F, 2	D.I.	9	F 016-1(20) Sec. 1	14	
	2 Rev. B 12	D.I.				
5-20-65	Add Turkey Creek Park Subd.	D.I.				
5-14-67	Delete 5, 6 Rev. 2, 7, 8 Rev. 1	D.I.				
	12, 12A, 13, 14 Rev. Added Note B	D.I.				
	Rev. Proj. No.	FCM				
8-25-89	Add ROW Lines of C-70	D.G.				

SE 1/4 Sec. 1
T. 5 S., R. 70 W.
Soda Lakes
Finance Corp.
Exceptions

NOTE:
Refer To Proj. F 016-1(20) Sec. 2
For New Alignment.

PRELIMINARY OWNERSHIP MAP
FOR THAT PART OF
T. 5 S., R. 69 & 70 W.
JEFFERSON COUNTY
FOR PROJECT
F 016-1(20) Sec. 1
SCALE: 1" = 200'

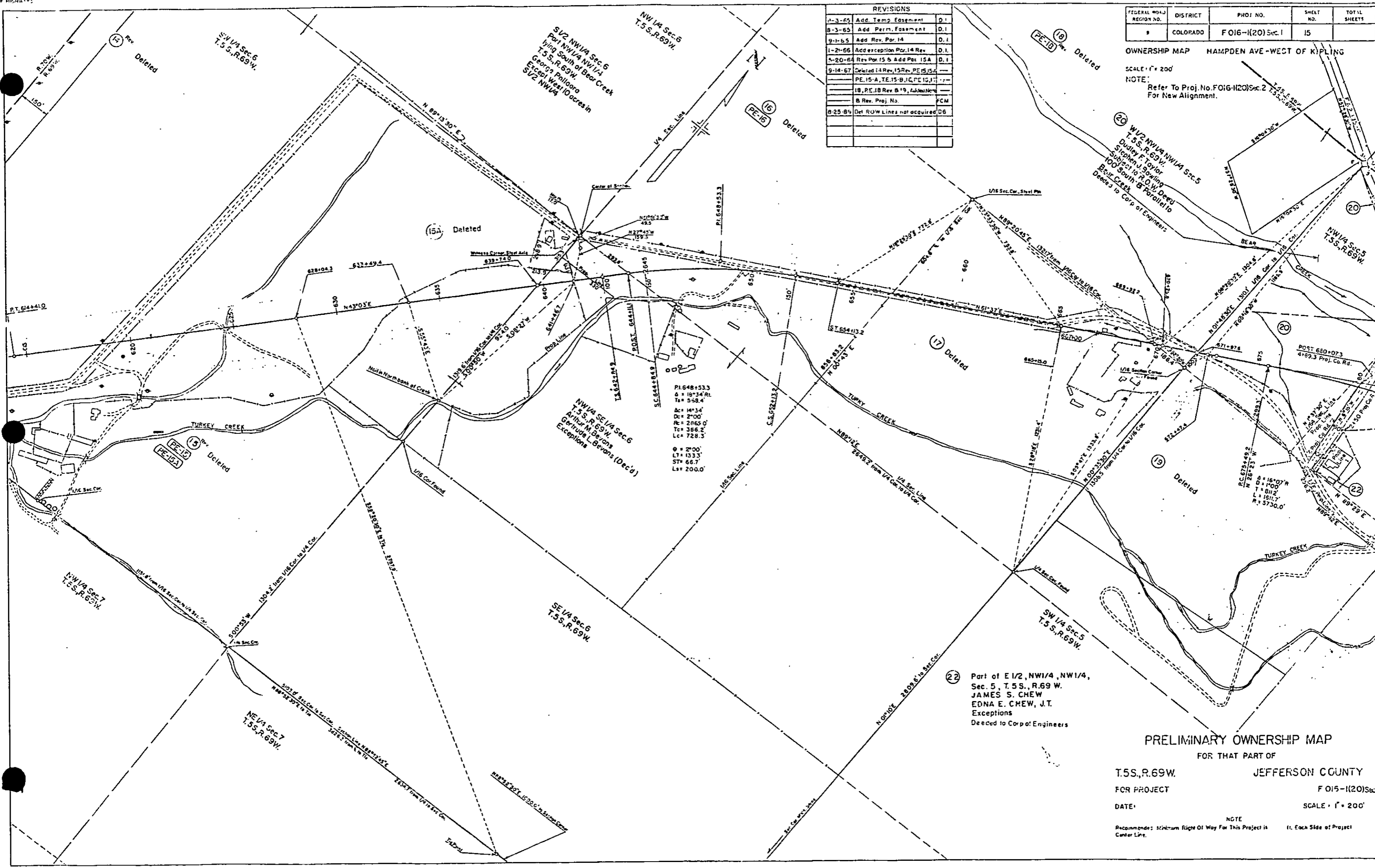
DATE: _____
NOTE
Recommended Minimum Right Of Way For This Project is
ft. Each Side of Project
Center Line.



REVISIONS		
1-3-65	Add Temp Easement	D.I.
8-3-65	Add Perm. Easement	D.I.
9-1-65	Add Rev. Par. 14	D.I.
1-21-66	Add exception Par. 14 Rev.	D.I.
4-20-64	Rev Par. 15 & Add Pat. 15A	D.I.
9-14-67	Deleted 14 Rev, 15 Rev, PE 15, 15A	
	PE 15-A, TE 15-B, 15-C, 15-D, 15-E	
	18, PE 18 Rev B 19, Add New	
	B Rev. Proj. No.	FCM
8-25-85	Del. ROW Lines not acquired	D6

FEDERAL ROAD REGION NO.	DISTRICT	PROJ. NO.	SHEET NO.	TOT. SHEETS
9	COLORADO	F 016-1(20) Sec. 1	15	

OWNERSHIP MAP HAMPDEN AVE - WEST OF KIPLING
 SCALE: 1" = 200'
 NOTE: Refer To Proj. No. F016-1(20) Sec. 2 For New Alignment.



PI. 648+53.3
 Δ = 16°34' RI.
 Ts = 558.4'
 Dc = 14°34'
 Rc = 2°00'
 Tc = 2865.0'
 Lc = 728.3'
 θ = 2°00'
 LT = 133.3'
 ST = 66.7'
 Lr = 200.0'

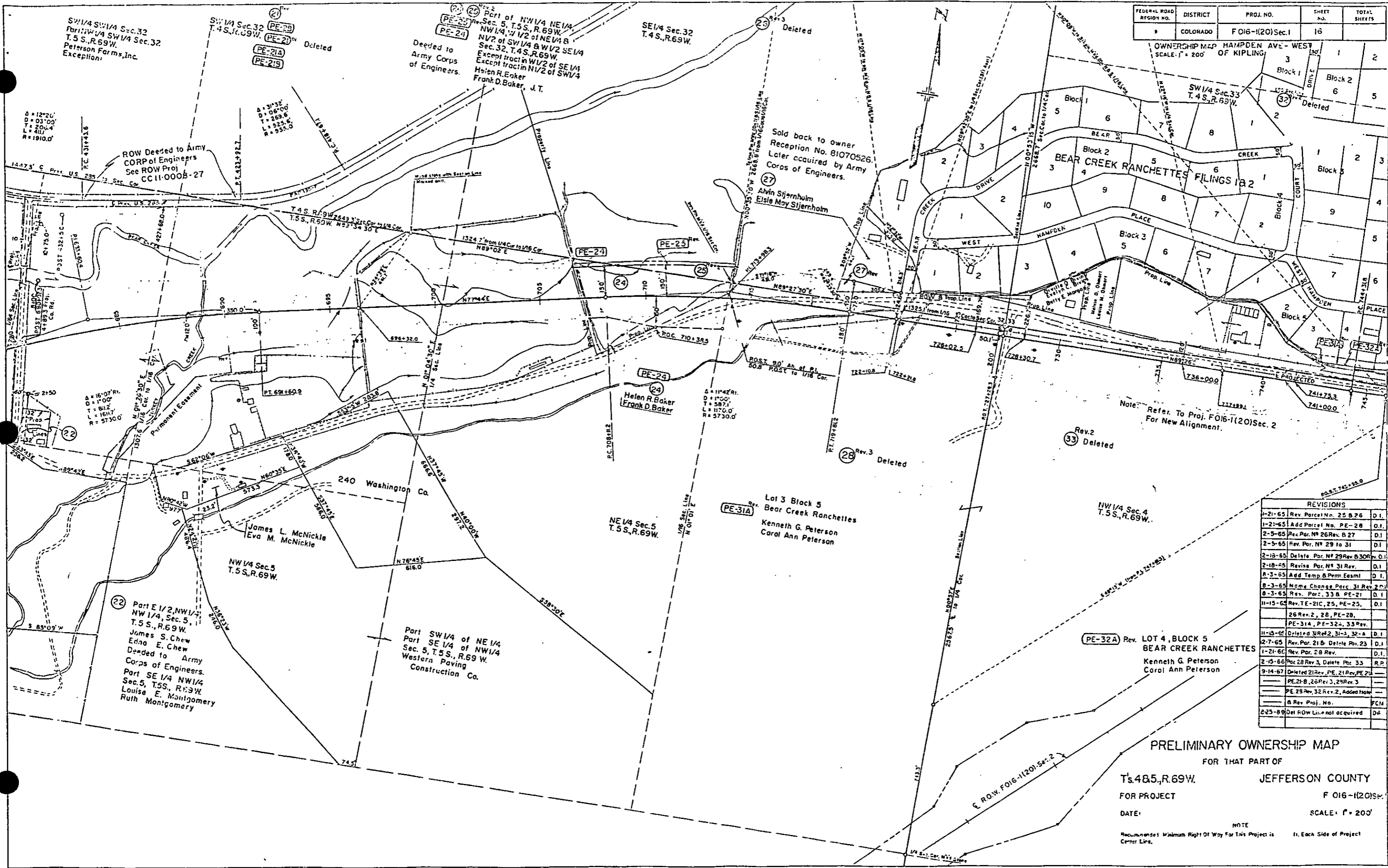
(22) Part of E 1/2, NW 1/4, NW 1/4, Sec. 5, T.5S., R.69 W. JAMES S. CHEW EDNA E. CHEW, J.T. Exceptions Deeded to Corp of Engineers

PRELIMINARY OWNERSHIP MAP
 FOR THAT PART OF
 T.5S., R.69W. JEFFERSON COUNTY
 FOR PROJECT F 015-1(20) Sec. 1
 DATE: SCALE: 1" = 200'
 NOTE: Recommend: Minimum Right Of Way For This Project is 11'. Each Side of Project Center Line.

FEDERAL ROAD REGION NO.	DISTRICT	PROJ. NO.	SHEET NO.	TOTAL SHEETS
9	COLORADO	F 016-1(20)Sec.1	16	

OWNERSHIP MAP HAMPDEN AVE - WEST OF KIPLING
SCALE: 1" = 200'

1	2
3	Block 2
4	6
5	5
6	Deleted
7	1
8	2
9	3
10	4
11	5
12	6
13	7
14	8
15	9
16	10
17	11
18	12
19	13
20	14
21	15
22	16
23	17
24	18
25	19
26	20
27	21
28	22
29	23
30	24
31	25
32	26
33	27
34	28
35	29
36	30
37	31
38	32
39	33
40	34
41	35
42	36
43	37
44	38
45	39
46	40
47	41
48	42
49	43
50	44
51	45
52	46
53	47
54	48
55	49
56	50
57	51
58	52
59	53
60	54
61	55
62	56
63	57
64	58
65	59
66	60
67	61
68	62
69	63
70	64
71	65
72	66
73	67
74	68
75	69
76	70
77	71
78	72
79	73
80	74
81	75
82	76
83	77
84	78
85	79
86	80
87	81
88	82
89	83
90	84
91	85
92	86
93	87
94	88
95	89
96	90
97	91
98	92
99	93
100	94



Note: Refer To Proj. F016-1(20)Sec. 2 For New Alignment.

REVISIONS			
1-21-65	Rev. Parcel No. 25 & 26	D.I.	
1-21-65	Add Parcel No. PE-28	D.I.	
2-5-65	Rev. Par. No. 26 Rev. B 27	D.I.	
2-5-65	Rev. Par. No. 29 to 31	D.I.	
2-18-65	Delete Par. No. 29 Rev. B 30 Rev. D.I.		
2-18-65	Revise Par. No. 31 Rev.	D.I.	
8-3-65	Add Temp. & Perm. Easmt.	D.I.	
8-3-65	Name Change Parc. 31 Rev. 2 P.		
8-3-65	Rev. Par. 33 B PE-21	D.I.	
11-15-65	Rev. TE-21C, 25, PE-25,	D.I.	
	26 Rev. 2, 28, PE-28,		
	PE-31A, PE-32A, 33 Rev.		
11-15-65	Deleted 31 Ref. 2, 31-3, 32-a	D.I.	
2-7-65	Rev. Par. 21 & Delete Rev. 23	D.I.	
1-21-65	Rev. Par. 28 Rev.	D.I.	
2-15-66	Par. 28 Rev. 3, Delete Par. 33	R.P.	
9-14-67	Deleted 21 Rev. PE-21 Rev. PE-21		
	PE-21-8, 26 Rev. 3, 29 Rev. 3		
	PE-29 Rev. 32 Rev. 2, Added Note		
	& Rev. Proj. No.	F.C.M.	
8-25-89	Del ROW Lin. = not acquired	D.A.	

PRELIMINARY OWNERSHIP MAP
FOR THAT PART OF
T. 48 S., R. 69 W. JEFFERSON COUNTY
FOR PROJECT F 016-1(20)Sec. 2
DATE: _____ SCALE: 1" = 200'
NOTE: Recommended Minimum Right Of Way For This Project is 11' Each Side of Project Center Line.

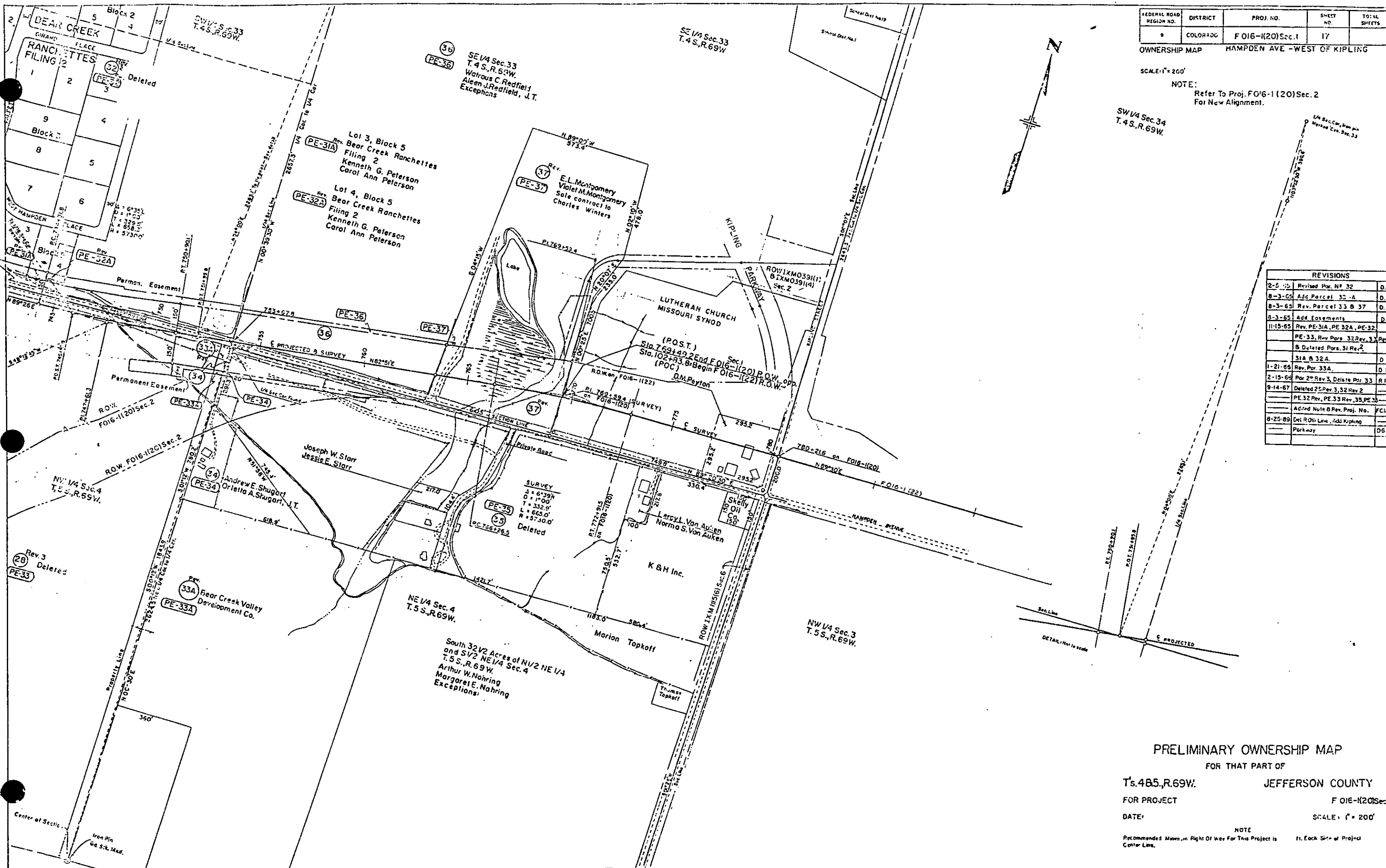
FEDERAL ROAD REGION NO.	DISTRICT	PROJ. NO.	SHEET NO.	TOTAL SHEETS
9	COLORADO	F 016-1(20)Sec.1	17	

OWNERSHIP MAP HAMPDEN AVE - WEST OF KIPLING

SCALE: 1" = 200'

NOTE:
Refer To Proj. FO16-1(20)Sec.2
For New Alignment.

REVISIONS		
2-5-55	Revised Par. No. 32	D.I.
8-3-65	Adj. Parcel 33-A	D.I.
8-3-65	Rev. Parcel 33 B 37	D.I.
8-3-65	Add Easements	D.I.
11-15-65	Rev. PE-31A, PE-32A, PE-32	
	PE-33, Rev. Para. 32 Rev. 33	Rev.
	B Deleted Para. 31 Rev. 2	
	31A & 32A	D.I.
1-21-66	Rev. Par. 33A	D.I.
2-15-66	Par. 2 Rev. 3, Delete Par. 33	R.P.
9-14-67	Deleted 25 Par. 3, 32 Rev. 2	
	PE-32 Rev. PE-33 Rev. 35, PE-35	
	Accord Note B Rev. Proj. No.	F.C.M.
8-25-69	Del. ROW Line, Add Kipling	
	Parkway	D.S.



PRELIMINARY OWNERSHIP MAP

FOR THAT PART OF

T. 48 S., R. 69 W.

JEFFERSON COUNTY

FOR PROJECT

F 016-1(20)Sec.1

DATE:

SCALE: 1" = 200'

NOTE

Recommended Minimum Right Of Way For This Project is
Center Line.

ft. Each Side of Project