

TITLE SHEET



FEB 4 1968

# DEPARTMENT OF HIGHWAYS STATE OF COLORADO

## PLAN AND PROFILE OF PROPOSED FEDERAL AID PROJECT NO. F 017-2 (12) STATE HIGHWAY NO. 4 24 EL PASO COUNTY RIGHT OF WAY.

INFORMATION OBTAINED FROM AVAILABLE COUNTY RECORDS

FEDERAL ROAD REGION NO.	DIVISION	PROJECT NO.	SHEET NO.
9	COLORADO	F 017-2 (12)	1

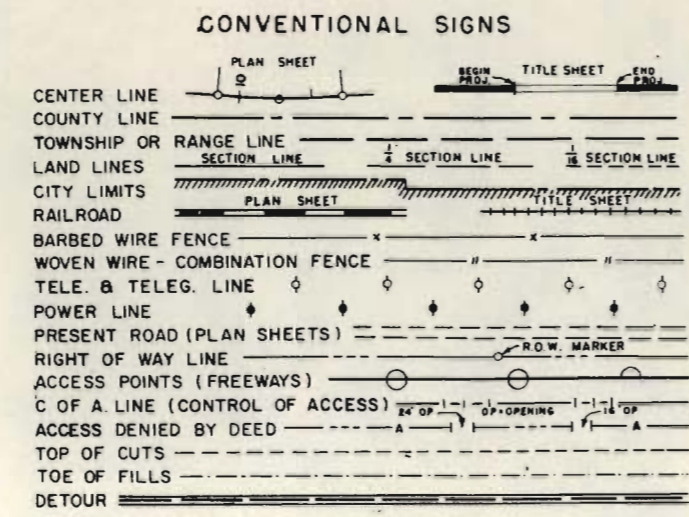
REVISIONS		
1-14-65	Rev. Begin Sta. & length proj.	LP
6-15-65	Rev. Begin Sta. & length proj.	LP

RIGHT OF WAY  
ACADEMY INTERCHANGE

INDEX OF SHEETS

SHEET NO.

1	TITLE SHEET
2	TABULATION SHEET
3-4	DETAIL & OWNERSHIP SHEETS

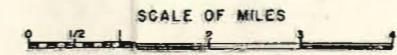
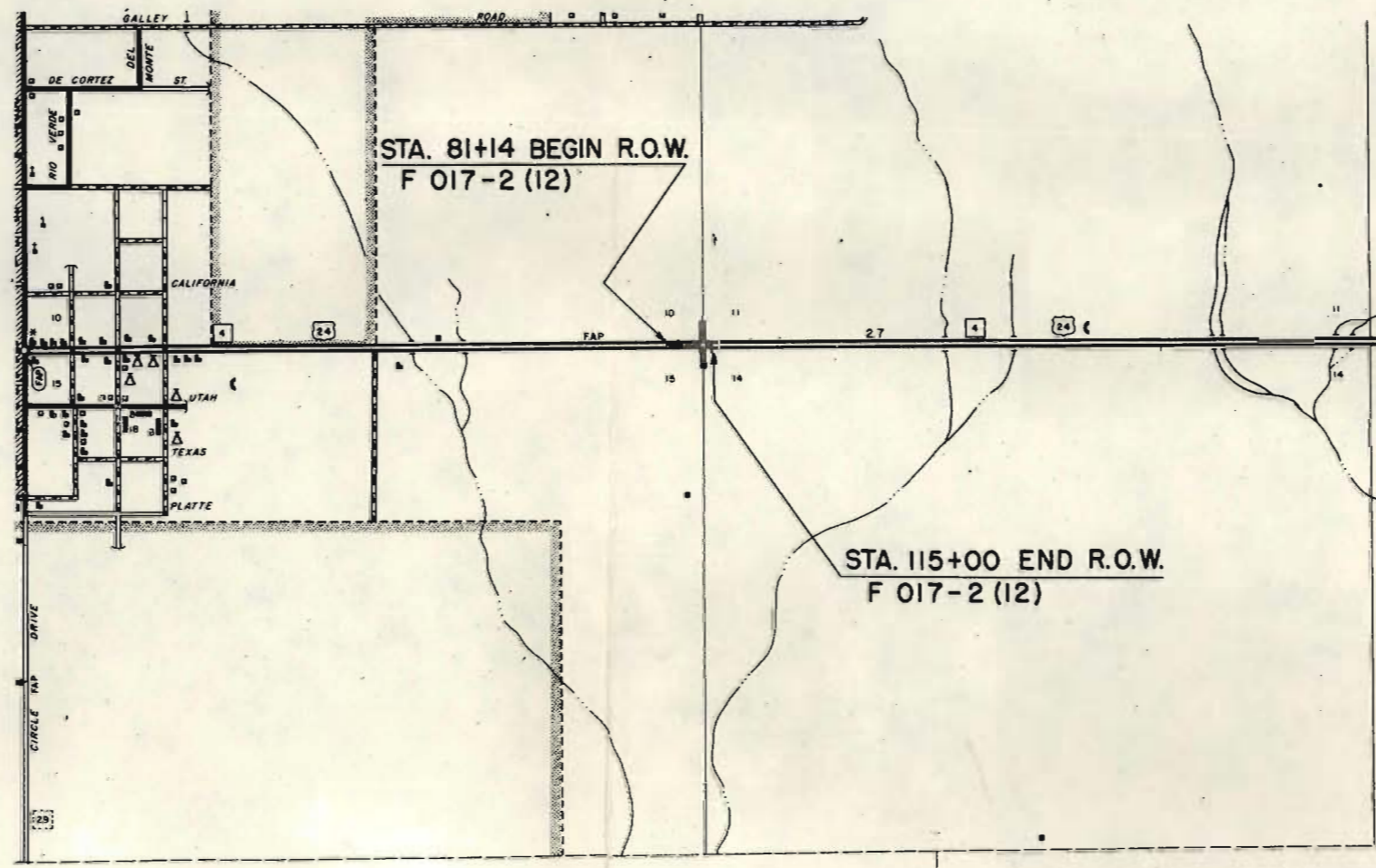


SCALES OF ORIGINAL DRAWINGS

ON PLAN, 1 IN. = 100 FT.  
ON PROFILE, 1 IN. = 100 FT. HORIZONTAL  
1 IN. = 10 FT. VERTICAL

GRADE LINE ON PROFILE IS SHOWN AS GRADE OF FINISHED ROAD

LENGTH OF PROJECT = 0.641 MILES (R.O.W.)



FILE COPY  
DO NOT REMOVE

R. O. W. TABULATION OF PROPERTIES IN EL PASO COUNTY S.H.No. 4 PROJ. F 017-2 (12)

FEDERAL ROAD DIVISION NO.	DISTRICT	PROJECT NO.	SHEET NO.
9	COLORADO	F 017-2 (12)	2

RIGHT OF WAY ACADEMY INTERCHANGE

PARCEL NO.	OWNER	ADDRESS	LOCATION	AREA IN ACRES			PURCHASE DATA					REMARKS	NO.	
				PARCEL	TO BE ACQUIRED	REMAINDER	LAND	IMPROV'M'TS	DAMAGE	MISC.	TOTAL			
			T. 14 S., R. 66 W., SIXTH P.M.			LT. RT.								
1 Rev.2	ARCH B. MARSHALL A.K.A. ARCH BRUCE MARSHALL A.K.A. ARCHIE BRUCE MARSHALL		SW 1/4 SW 1/4 SEC. 11 S SE 1/4 SE 1/4 SEC. 10	7.743	7.743	207 -								
1-A	ARCH B. MARSHALL		SE 1/4 SEC. 10	3.049	3.049									
2 Rev.2	JOHN W. LINKOUS & BERNICE B. LINKOUS		NE 1/4 NE 1/4 SEC. 15	0.0492	0.0492	- 0.203								
3 Rev.2	LEO H. VERVERS		NE 1/4 NE 1/4 SEC. 15	0.052	0.052	- 0.199								
3-A	HAROLD S. HEYSE & R. J. WATSON		NE 1/4 SEC. 15	0.044	0.044	0.189								
4-A Rev.	HAROLD S. HEYSE & R. J. WATSON		NE 1/4 NE 1/4 SEC. 15	0.138	0.138	- 0.765								
4 B Rev.2	HAROLD S. HEYSE & R. J. WATSON		NE 1/4 NE 1/4 SEC. 15	0.279	0.279	- 0.678								
4-C Rev.3	HAROLD S. HEYSE & R. J. WATSON		NE 1/4 NE 1/4 SEC. 15	1.200	1.200	- 0.396								
5 Rev.3	CLYDE O. HOYT, JR. & DOROTHY N. HOYT		NE 1/4 NE 1/4 SEC. 15	0.059	0.059	- 0.227								
5-A Rev.	CLYDE O. HOYT, JR. & DOROTHY N. HOYT		NE 1/4 NE 1/4 SEC. 15	0.064	0.064	- 0.127								
6 Rev.3	SMARTT CONSTRUCTION CO.		NE 1/4 NE 1/4 SEC. 15	0.595	0.595	- 11.398								
7 Rev.3	MAX W. HUEFTLE & DONALD C. NEITHERCUTT		NE 1/4 NE 1/4 SEC. 15	1.267	1.267	- 10.659								
7-A	DEPARTMENT OF HIGHWAYS - STATE OF COLORADO		NE 1/4 SEC. 15	0.087	0.087	-						Part of 7 Rev.3 Sold to MAX W. HUEFTLE & DONALD C. NEITHERCUTT	7-A	
8 Rev.	EL PASO COUNTY		NE 1/4 NE 1/4 SEC. 15	1.122	1.122									
9 Rev.	BILBURN INVESTMENT CO.		NW 1/4 NW 1/4 SEC. 14	2.761	2.761	- 571								
10 Rev.2	MAX W. HUEFTLE & DONALD C. NEITHERCUTT		NE 1/4 NE 1/4 SEC. 15	0.154	0.154	- 47								
E-11 Rev.2	SMARTT CONSTRUCTION CO.		BLOCK 5 & 7, SW 1/4 SEC. 11	0.234	0.234									

REVISIONS			
11-4-65	1 Rev. 2, 2 Rev. 3 Rev. 4A Rev. 4B Rev. 2		
4-15-65	2 Rev. 3 Rev. 4-8 Rev. 2, 4-C Rev. 2, 5 Rev. 2, 6 Rev. 2, 7 Rev. 2, 8 Rev. 2, 9 Rev. 2		
10-15-65	8 add 5A & E 11 Rev. 2		L.P.
4-13-66	Add Par. 3-A, 1A		L.P.
4-13-66	Add Par. 7-A		D.J.F.

SE 1/4 SEC. 10  
T. 14 S., R. 66 W.

SW 1/4 SEC. 11  
T. 14 S., R. 66 W.

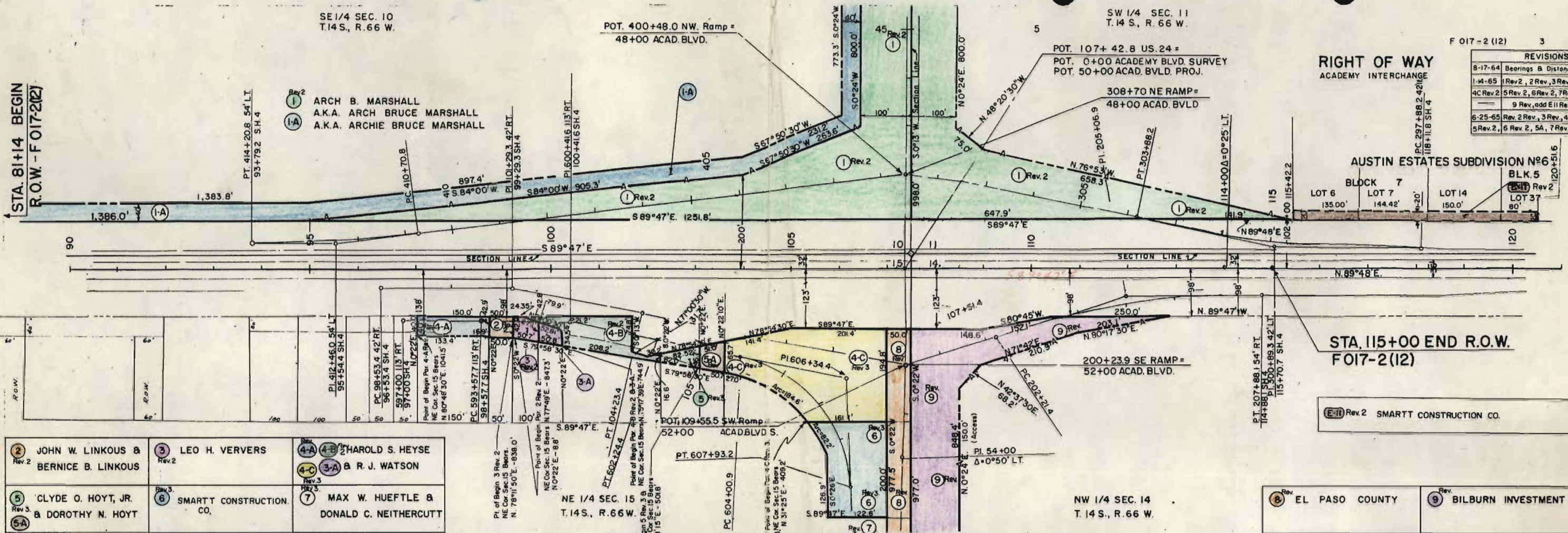
F 017-2 (12) 3

### RIGHT OF WAY ACADEMY INTERCHANGE

REVISIONS		
8-17-64	Bearings & Distances	DJF
1-14-65	1 Rev. 2, 2 Rev. 3, 3 Rev. 4, 4 Rev. 5, 5 Rev. 6	LP
4C Rev. 2	5 Rev. 2, 6 Rev. 2, 7 Rev. 2, add 8 Rev. 2	LP
	9 Rev. add E II Rev. 2	LP
6-25-65	Rev. 2 Rev. 3, Rev. 4, 8 Rev. 2, 4C Rev. 2, 5 Rev. 2, 6 Rev. 2, 5A, 7 Rev. 2, add 3A, 1A, LP	

STA. 81+14 BEGIN  
R.O.W. - F 017-2(12)

1-1 ARCH B. MARSHALL  
1-1A A.K.A. ARCH BRUCE MARSHALL  
A.K.A. ARCHIE BRUCE MARSHALL



AUSTIN ESTATES SUBDIVISION #6  
BLOCK 7  
LOT 6 135.00'  
LOT 7 144.42'  
LOT 14 150.0'  
BLK. 5  
LOT 37 80.0'

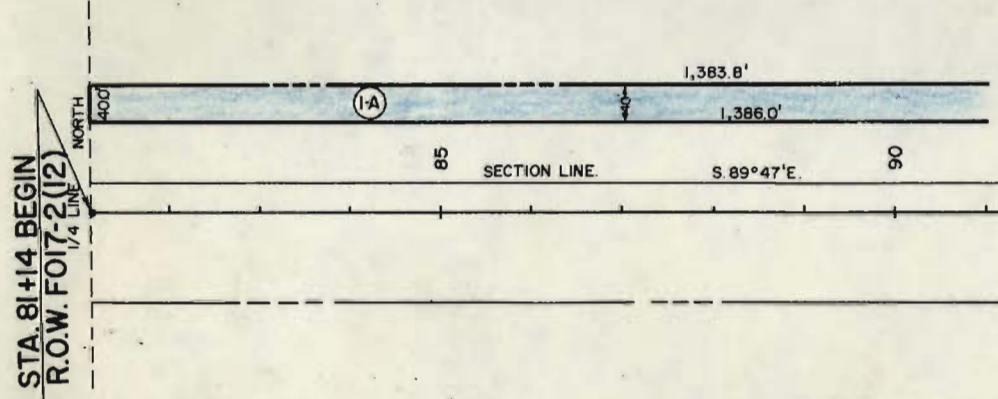
STA. 115+00 END R.O.W.  
F 017-2(12)

Rev. 2 SMARTT CONSTRUCTION CO.

2-1 JOHN W. LINKOUS & BERNICE B. LINKOUS	3-1 LEO H. VERVERS	4-1 HAROLD S. HEYSE
5-1 CLYDE O. HOYT, JR. & DOROTHY N. HOYT	6-1 SMARTT CONSTRUCTION CO.	7-1 MAX W. HUEFTLE & DONALD C. NEITHERCUTT

NW 1/4 SEC. 14  
T. 14 S., R. 66 W.

8-1 EL PASO COUNTY	9-1 BILBURN INVESTMENT CO.
--------------------	----------------------------



32

4-C HAROLD S. HEYSE & R. J. WATSON  
 5 CLYDE O. HOYT, JR. & DOROTHY N. HOYT  
 6 BILL SMARTT & SON INC.  
 7 MAX W. HUEFTLE & DONALD C. NEITHERCUTT

7-A SOLD TO MAX W. HUEFTLE & DONALD C. NEITHERCUTT

NE 1/4 SEC. 15  
 T.14S., R.66W.

8 EL PASO COUNTY  
 9 BILBURN INVESTMENT CO.  
 10 MAX W. HUEFTLE & DONALD C. NEITHERCUTT

NW 1/4 SEC. 14  
 T.14S., R.66W.

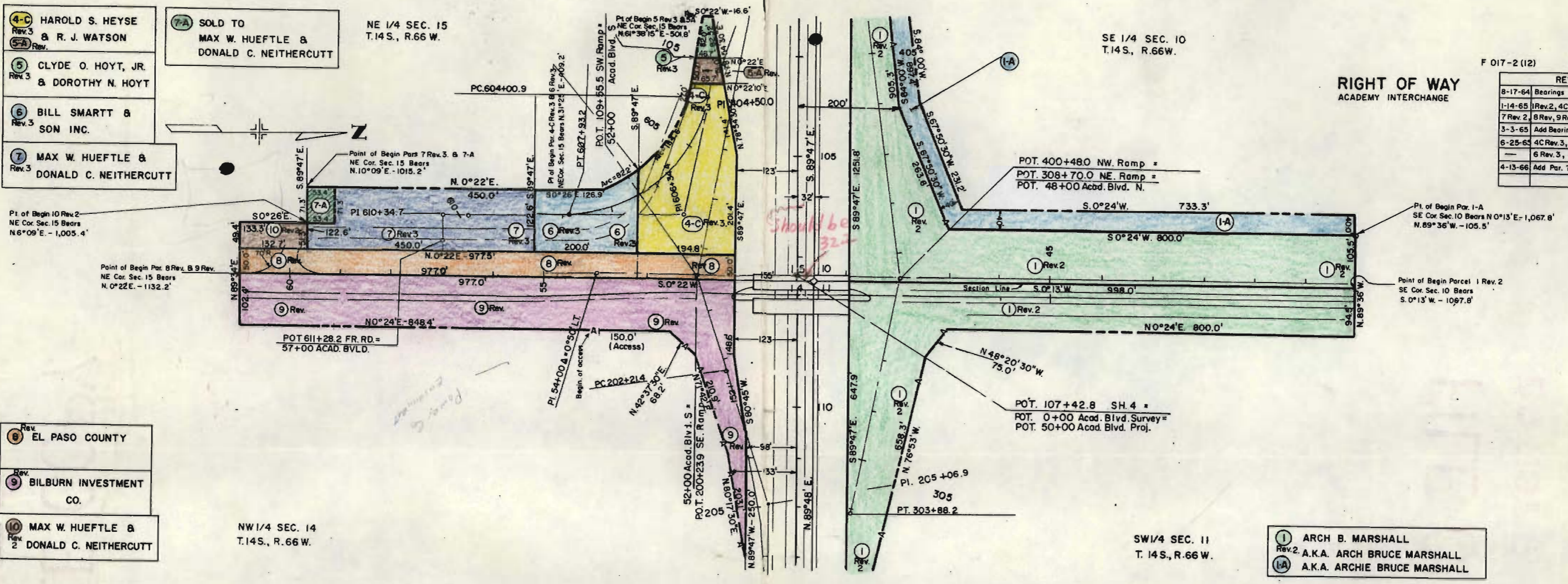
SE 1/4 SEC. 10  
 T.14S., R.66W.

SW 1/4 SEC. 11  
 T. 14S., R.66W.

**RIGHT OF WAY**  
 ACADEMY INTERCHANGE

F 017-2 (12) 4

REVISIONS		
8-17-64	Bearings & Distances	DJF
1-14-65	1 Rev. 2, 4C Rev. 2, 5 Rev. 2, 6 Rev. 2	
7 Rev. 2	8 Rev., 9 Rev., 10 Rev. 2, add 5A	LP
3-3-65	Add Bearing Par. 9 Rev.	DJF
6-25-65	4C Rev. 3, 5A Rev., 5 Rev. 3	
	6 Rev. 3, 8 7 Rev. 3, add 1A	LP
4-13-66	Add Par. 7-A	DJF



1 ARCH B. MARSHALL  
 Rev. 2 A.K.A. ARCH BRUCE MARSHALL  
 1A A.K.A. ARCHIE BRUCE MARSHALL