

DEPARTMENT OF HIGHWAYS STATE OF COLORADO

PLAN AND PROFILE OF PROPOSED FEDERAL AID PROJECT NO. F 017-3(10) STATE HIGHWAY NO. 8 CHEYENNE COUNTY

INFORMATION OBTAINED FROM AVAILABLE COUNTY RECORDS

SCALES OF ORIGINAL DRAWINGS

ON PLAN, 1 IN. = 100 FT.
ON PROFILE, 1 IN. = 100 FT. HORIZONTAL
1 IN. = 10 FT. VERTICAL
GRADE LINE ON PROFILE IS SHOWN AS GRADE OF FINISHED ROAD
Length of R.O.W. Project = 0.479 Miles

REVISIONS	

FEDERAL ROAD REGION NO.	DIVISION	PROJECT NO.	SHEET NO.
9	COLORADO	F 017-3(10)	1

RIGHT OF WAY
Kit Carson-East

SHEET NO.

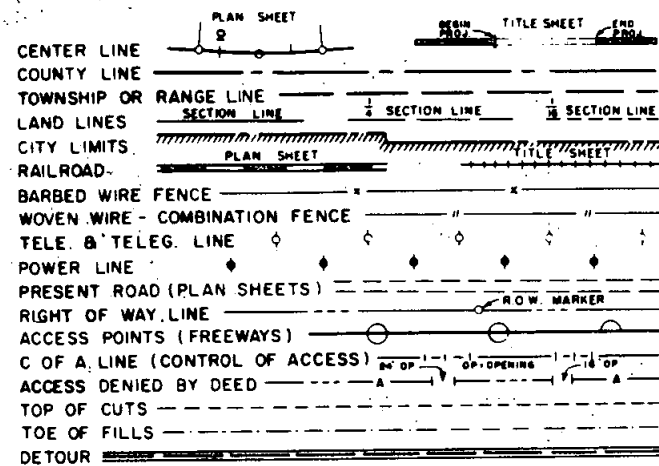
1
2
3-4

TITLE PAGE
TABULATION OF PROPERTIES
PLAN & PROFILE SHEETS SHOWING R.O.W.

NOTE:

Plans and descriptions on this project were calculated and checked by field forces.

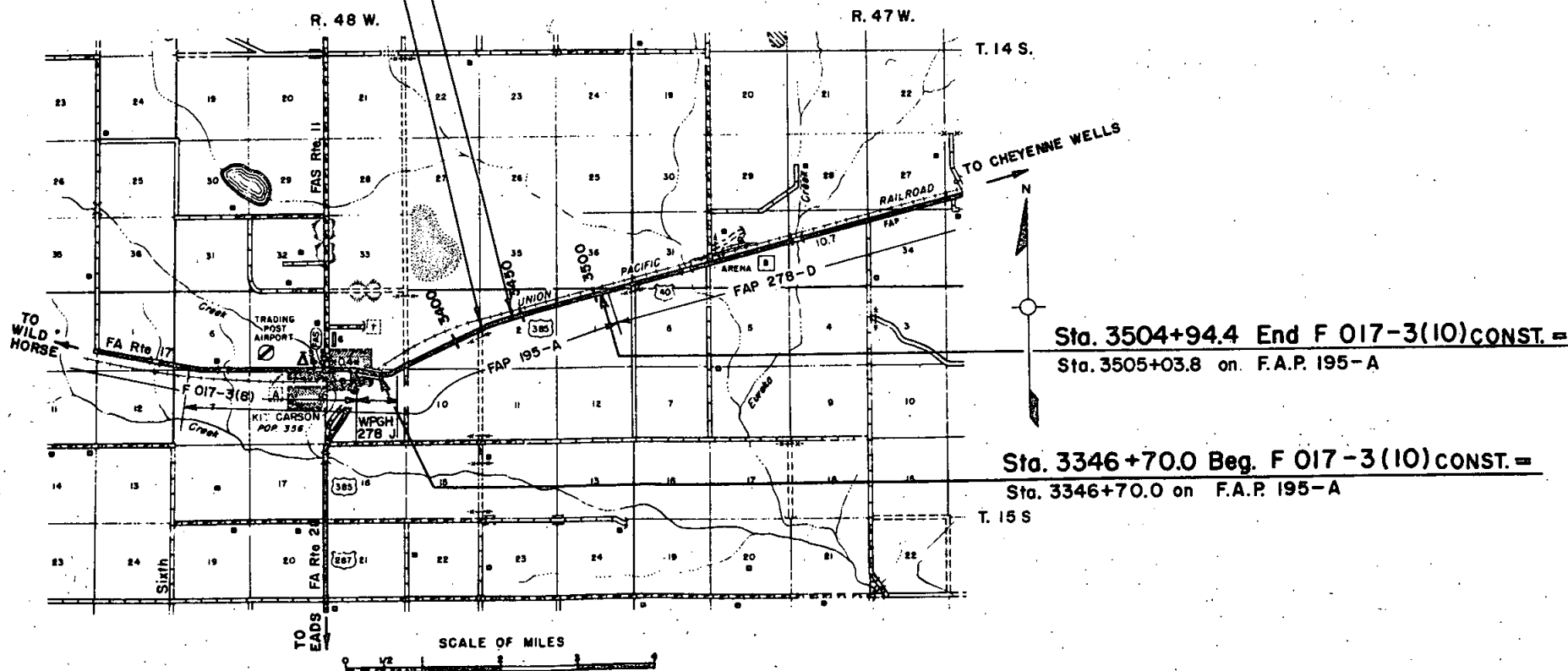
CONVENTIONAL SIGNS



RIGHT OF WAY

BEGIN R.O.W. Sta. 3419+68.9 F 017-3(10) =
13' Right of Sta. 3419 + 75.8 F.A.P. 195-A

END R.O.W. Sta. 3445+00 F 017-3(10) =
12.8' Right of Sta. 3448 + 08.8 F.A.P. 195-A



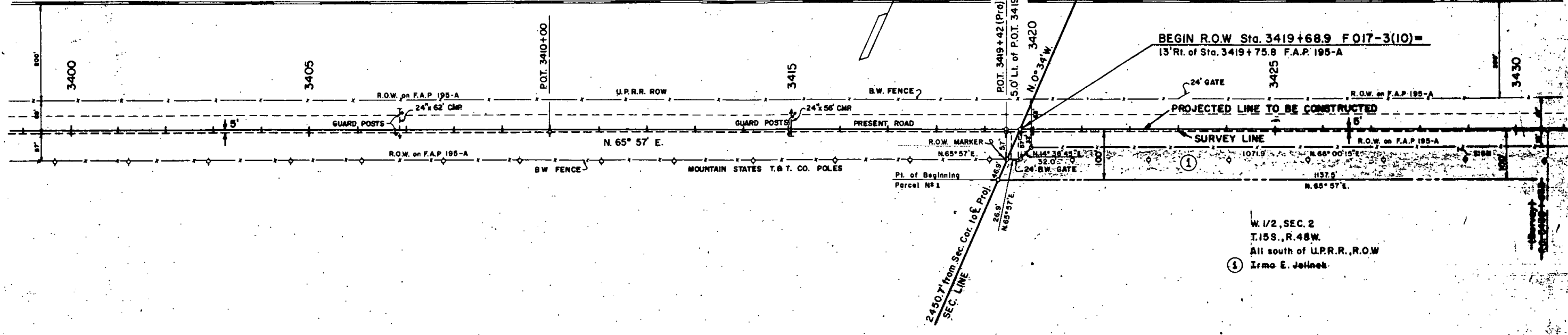
SE 1/4 SEC. 3
T. 15 S., R. 48 W.

REVISIONS	

FED. ROAD REG. NO.	DIVISION	PROJECT NO.	SHEET NO.
9	COLO.	F 017-3 (10)	3

RIGHT OF WAY
Kit Carson-East
NW 1/4 SEC. 2
T. 15 S., R. 48 W.

UNION PACIFIC R.R.

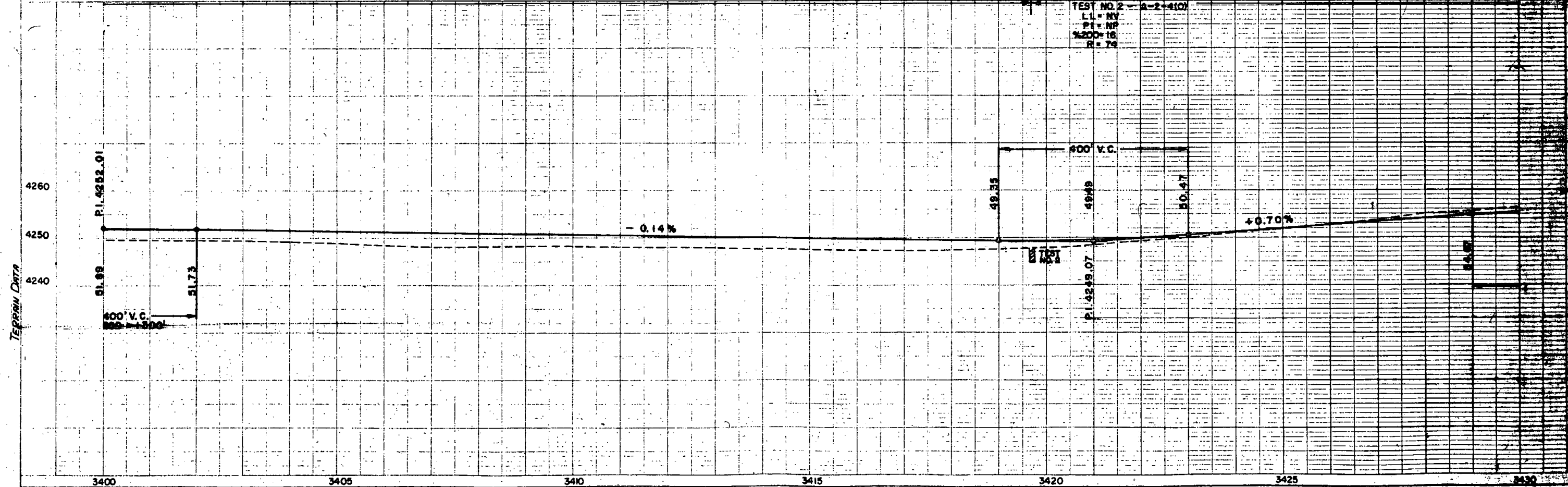


W. 1/2, SEC. 2
T. 15 S., R. 48 W.
All south of U.P.R.R., R.O.W.
① Irma E. Jetties

B.M. NO. 6 ELV. 4248.19
M. & G. 71' LT. STA. 3409+00

B.M. NO. 5 ELV. 4244.83
M. & G. 71' LT. STA. 3415+00

B.M. NO. 4 ELV. 4251.56
TOP OF SOUTH EAST BOLT, BASE
OF U.P.R.R. WEST BOUND SIGNAL TOWER
240' LT. STA. 3423+00



NW 1/4 SEC. 2
T.15 S., R. 48W.

NE 1/4 SEC. 2
T.15 S., R. 48W.

RIGHT OF WAY
Kit Carson-East

REVISIONS	

