

T.49N., R.3W. & T.49N., R.2W., N.M.P.M.

COLORADO DEPARTMENT OF HIGHWAYS

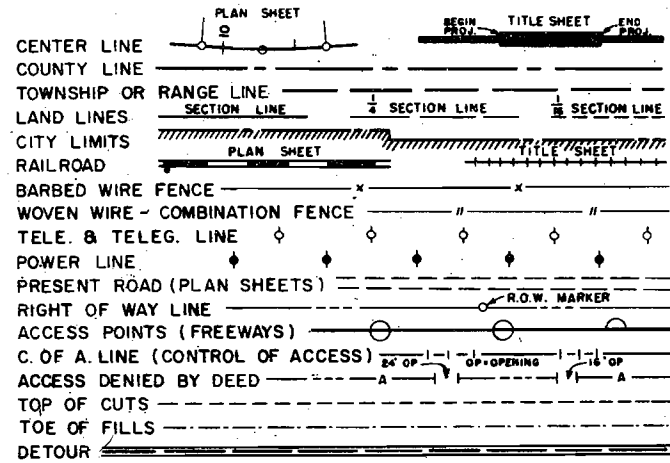
PLAN AND PROFILE OF PROPOSED FEDERAL AID PROJECT NO. F-021-1(15) STATE HIGHWAY NO. 6 GUNNISON COUNTY

FEDERAL ROAD DISTRICT NO.	DIVISION	PROJECT NO.	SHEET NO.
9	COLORADO	F 021-1(15)	1

RIGHT OF WAY IOLA-WEST

REVISIONS	

CONVENTIONAL SIGNS



INDEX OF SHEETS

1	TITLE SHEET
2	TABULATION SHEET
3-10	PLAN & PROFILE SHEETS

LEGEND

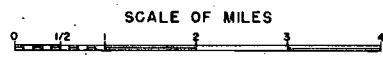
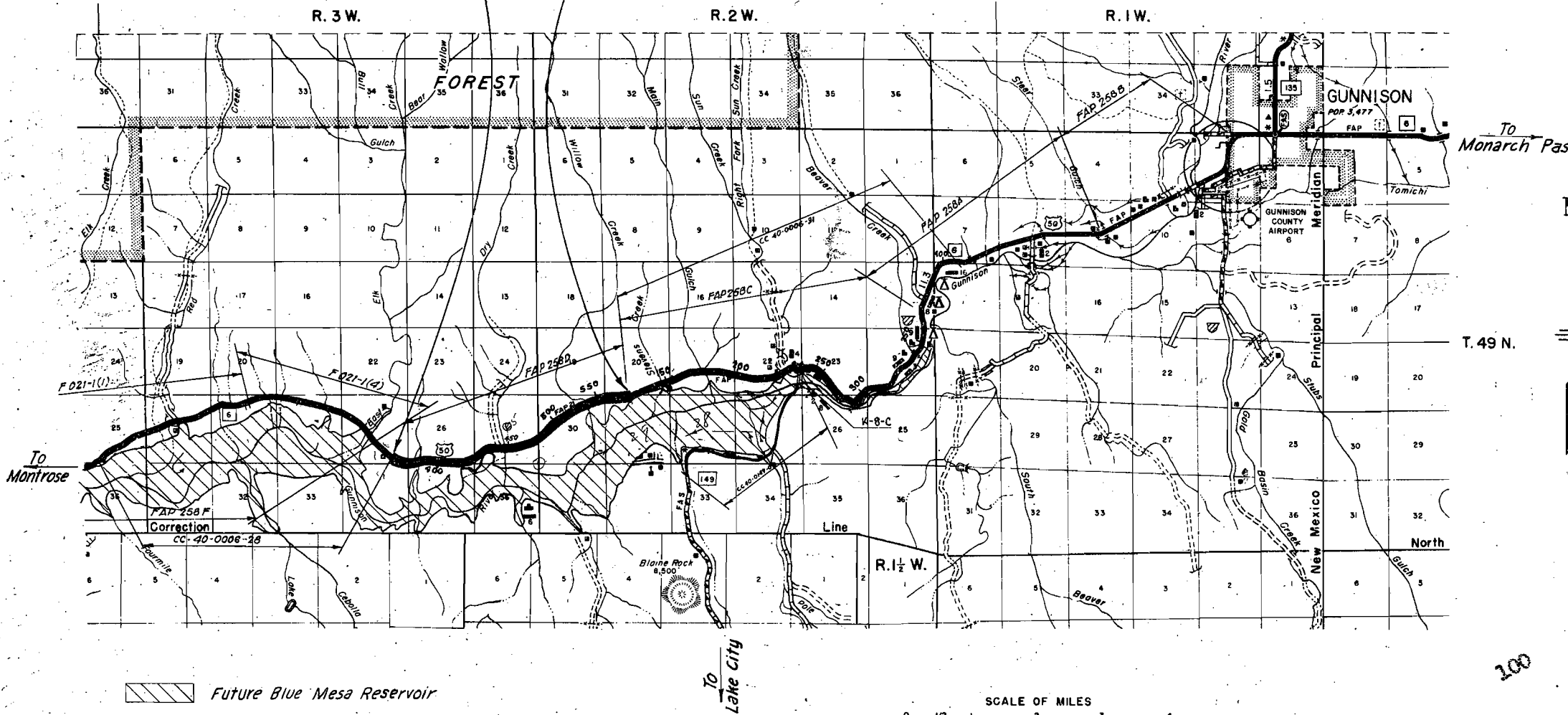
U. S. BUREAU OF RECLAMATION	
U. S. BUREAU OF LAND MANAGEMENT	

SCALES OF ORIGINAL DRAWINGS

ON PLAN, 1 IN. = 100 FT.
ON PROFILE, 1 IN. = 100 FT. HORIZONTAL
1 IN. = 20 FT. VERTICAL
GRADE LINE ON PROFILE IS SHOWN AS GRADE OF FINISHED ROAD
GROSS LENGTH OF PROJECT
NET LENGTH OF PROJECT

STA. 376+90.0 BEGIN F 021-1(15) =
Sta. 376+90.0 End CC 40-0006-28 =
Approx. Sta. 846+90 F.A.P. 258 D

STA. 573+67.8 END F 021-1(15) =
Sta. 105+00.0 Begin CC 40-0006-31 =
Approx. Sta. 643+00 on FAP 258 C

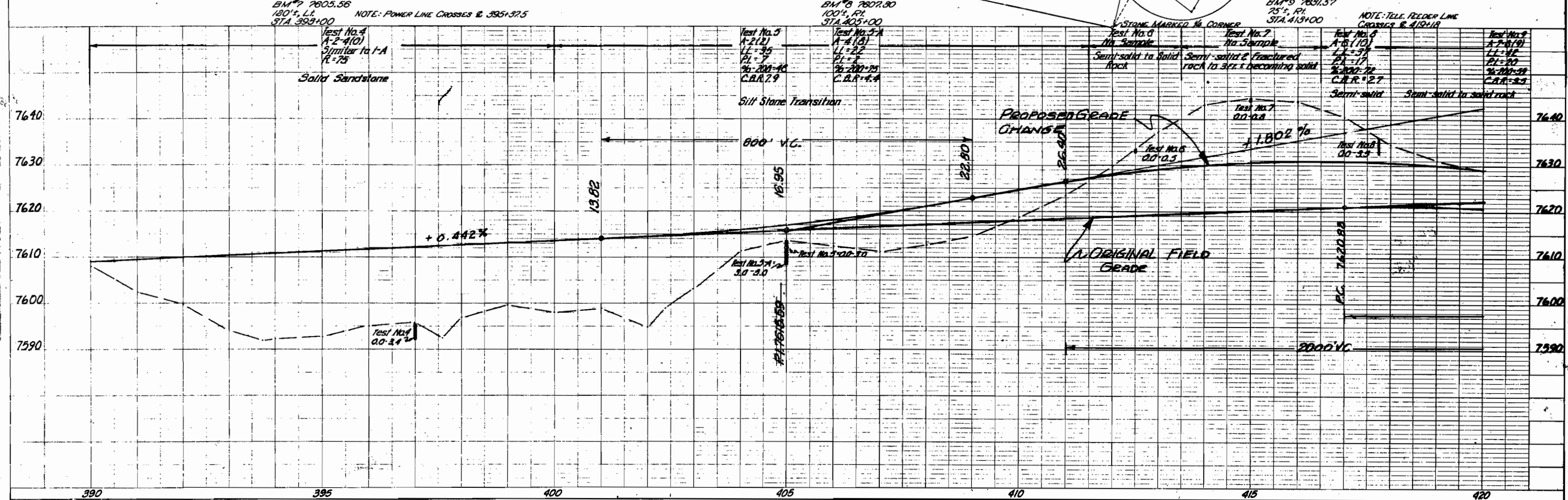
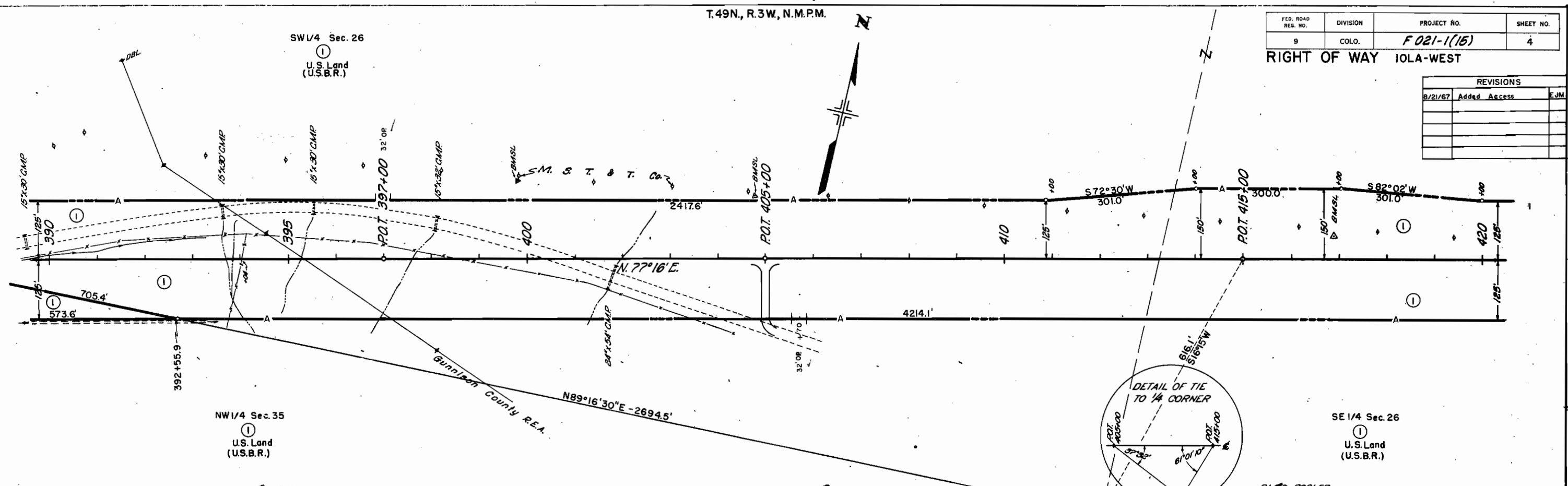


T.49N., R.3W., N.M.P.M.

FED. ROAD REG. NO.	DIVISION	PROJECT NO.	SHEET NO.
9	COLO.	F 021-1(15)	4

RIGHT OF WAY IOLA-WEST

REVISIONS		
8/21/67	Added Access	EJM



BM #7 7605.56
120' L.L.
STA. 393+00
NOTE: POWER LINE CROSSES @ 395+37.5

BM #8 7607.30
100' L.L.
STA. 405+00

BM #9 7631.57
25' L.L.
STA. 413+00
NOTE: TELE. FEEDER LINE CROSSES @ 413+13

Test No. 4
A-2 (10)
Similar to 1-A
R-75
Solid Sandstone

Test No. 5
A-2 (2)
L.L. 35
P.L. 7
% 200-10
C.A.R. 7.9
Silt Stone Transition

Test No. 5A
A-4 (8)
L.L. 22
P.L. 2
% 200-75
C.A.R. 4.4

Test No. 6
No Sample
Semi-solid to Solid
Rock

Test No. 7
No Sample
Semi-solid & fractured
rock to 3/4" becoming solid

Test No. 8
A-6 (10)
L.L. 57
P.L. 17
% 200-72
C.A.R. 2.7
Semi-solid

Test No. 9
A-7 (19)
L.L. 42
P.L. 20
% 200-59
C.A.R. 2.2
Semi-solid to solid rock

Test No. 15A
3.0-3.0

Test No. 15B
3.0-3.0

Test No. 7
00-0.2

Test No. 6
00-0.5

Test No. 8
00-3.3

+0.442%

13.82

16.95

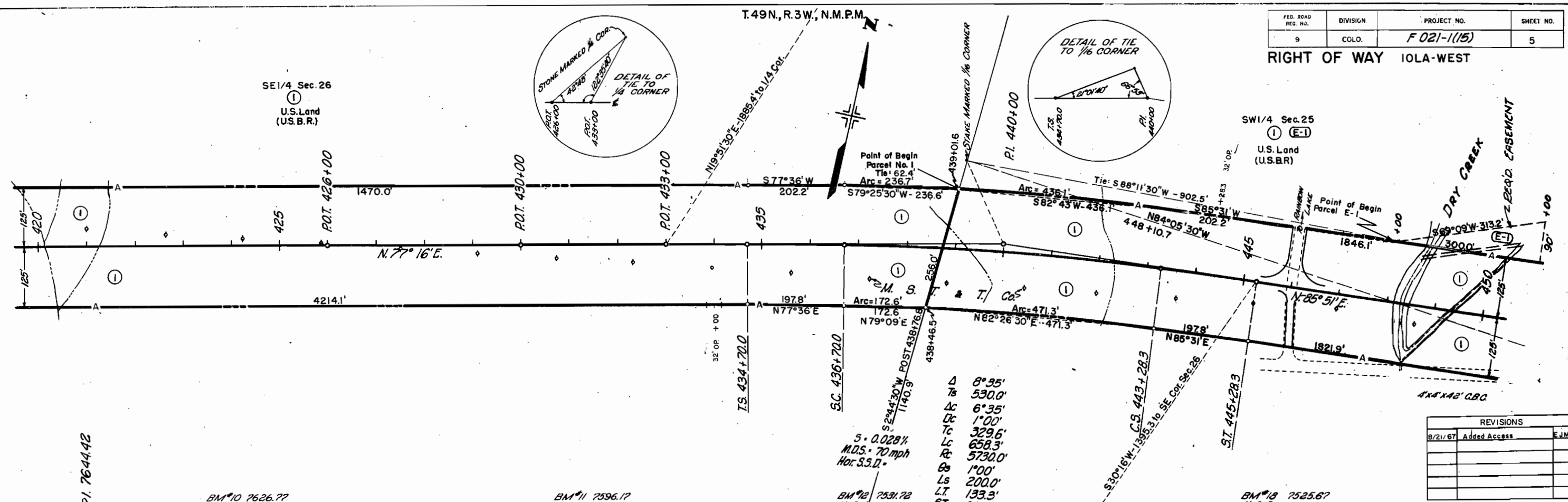
22.50

26.90

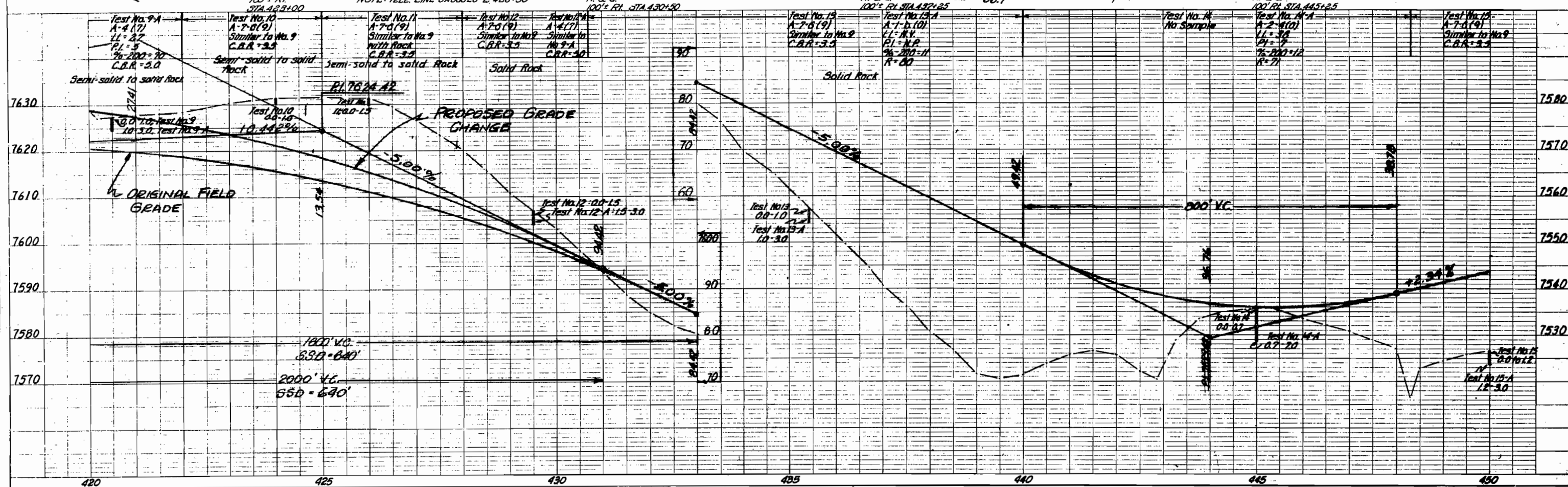
7620.88

FED. ROAD REG. NO.	DIVISION	PROJECT NO.	SHEET NO.
9	COLO.	F 021-1(15)	5

RIGHT OF WAY IOLA-WEST



REVISIONS		
8/21/67	Added Access	EJM

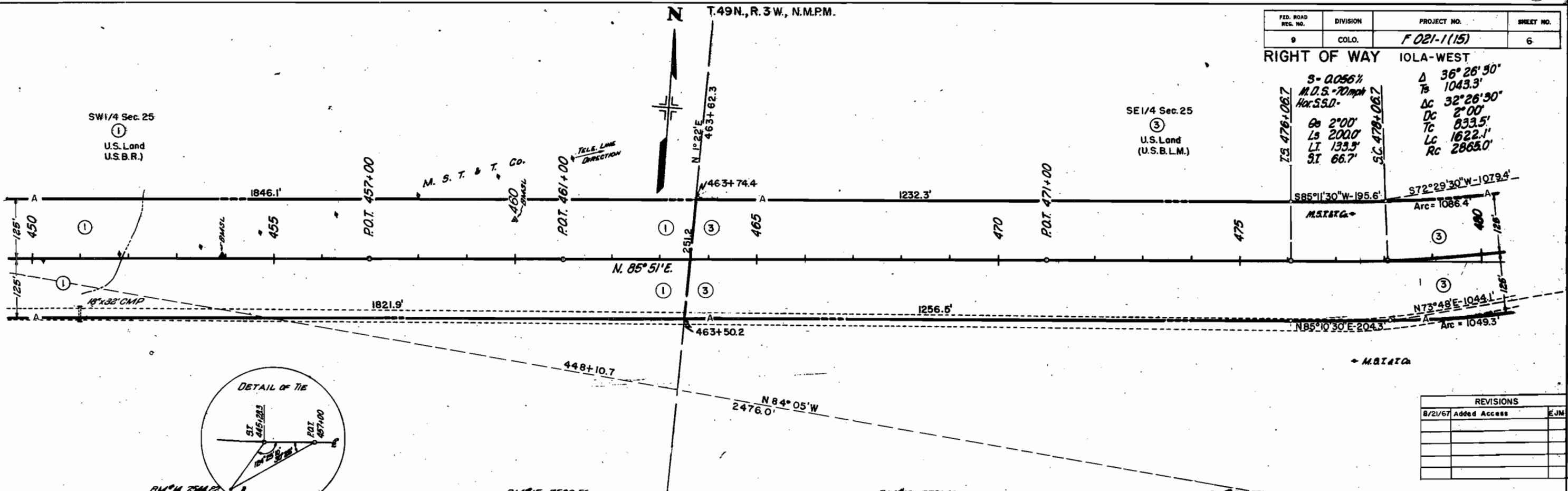


T. 49N., R. 3W., N.M.P.M.

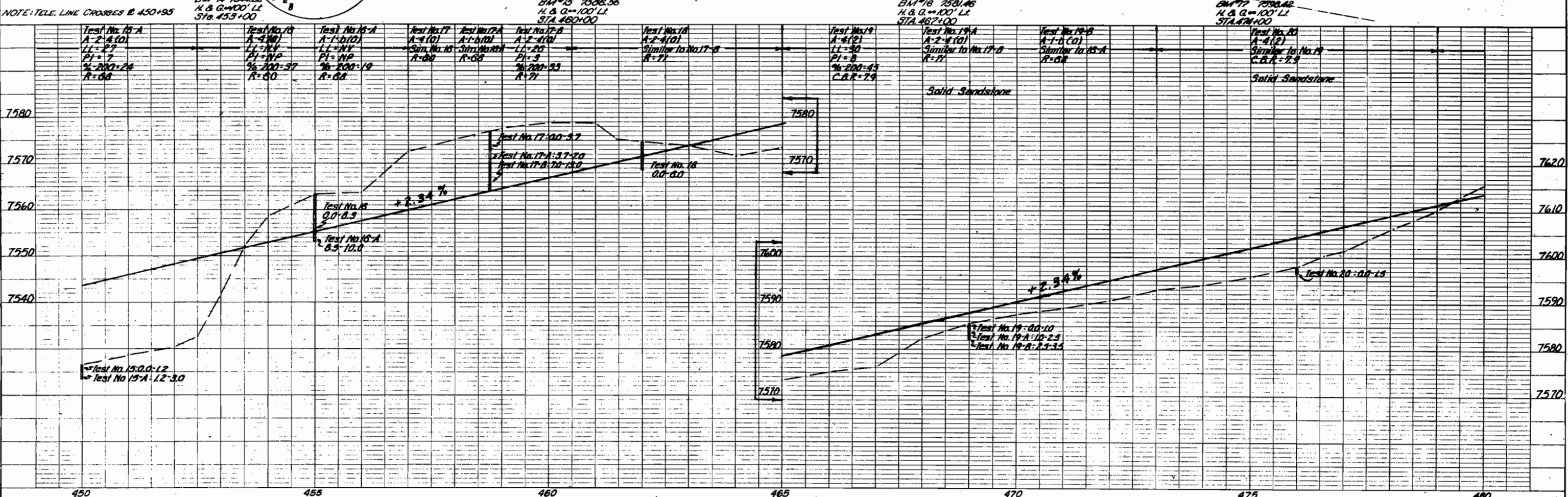
FED. ROAD REG. NO.	DIVISION	PROJECT NO.	SHEET NO.
9	COLO.	F 021-1(15)	6

RIGHT OF WAY IOLA-WEST

S = 0.056%	Δ 36° 26' 30"
M.D.S. = 70 mph	Ts 1043.3'
Hor. S.S.D.	Δc 32° 26' 30"
Gs 2° 00'	Dc 2° 00'
Ls 2000'	Tc 833.5'
Lt 133.5'	Lc 1622.1'
St 66.7'	Rc 2865.0'



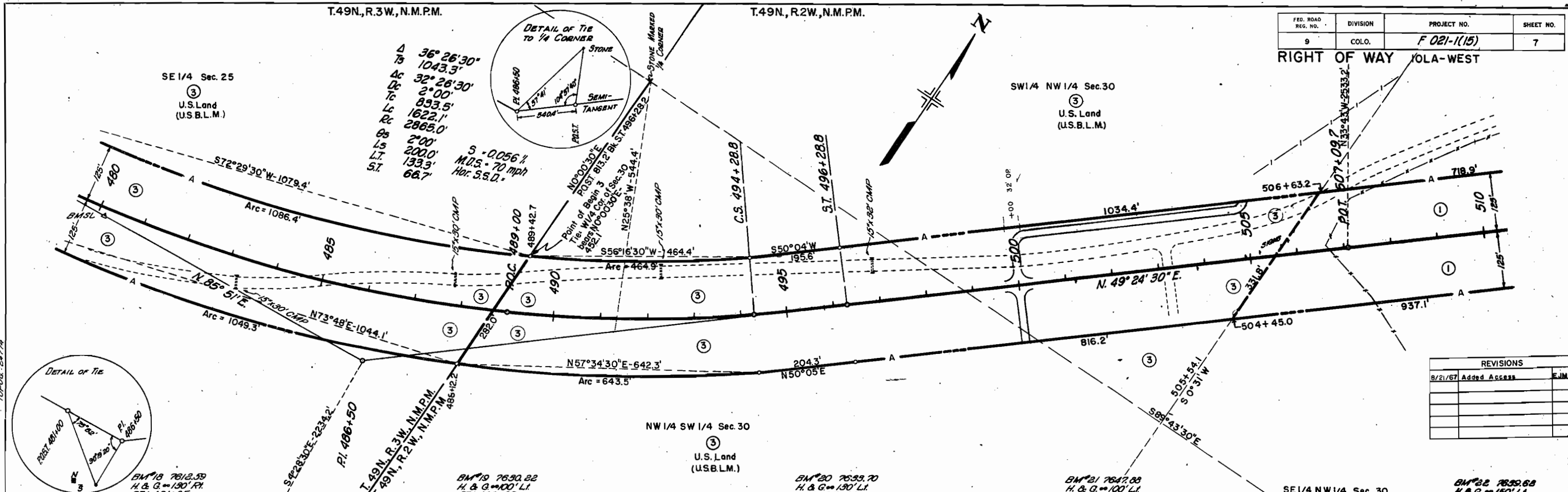
REVISIONS		
8/21/67	Added Access	EJM



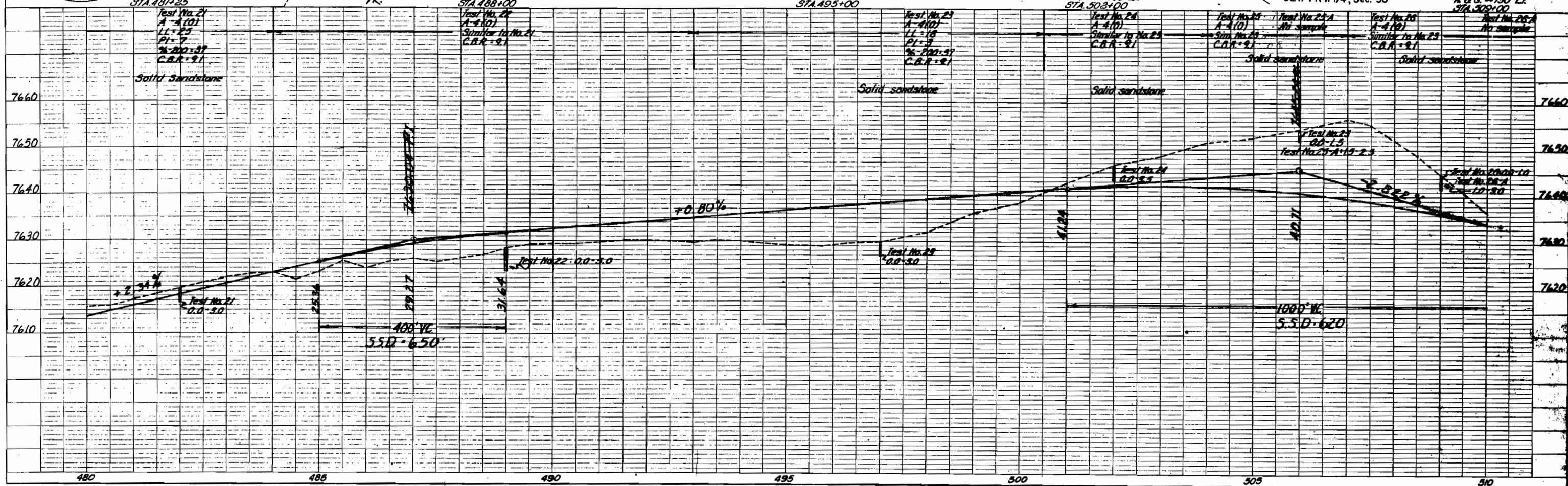
FED. ROAD REG. NO.	DIVISION	PROJECT NO.	SHEET NO.
9	COLO.	F 021-1(15)	7

T.49N., R.3W., N.M.P.M. T.49N., R.2W., N.M.P.M.

RIGHT OF WAY FOLA-WEST



REVISIONS	
8/21/67	Added Access EJM

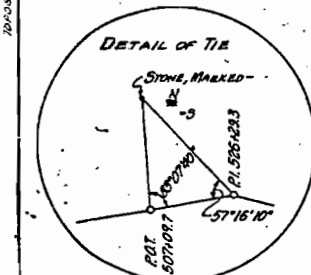
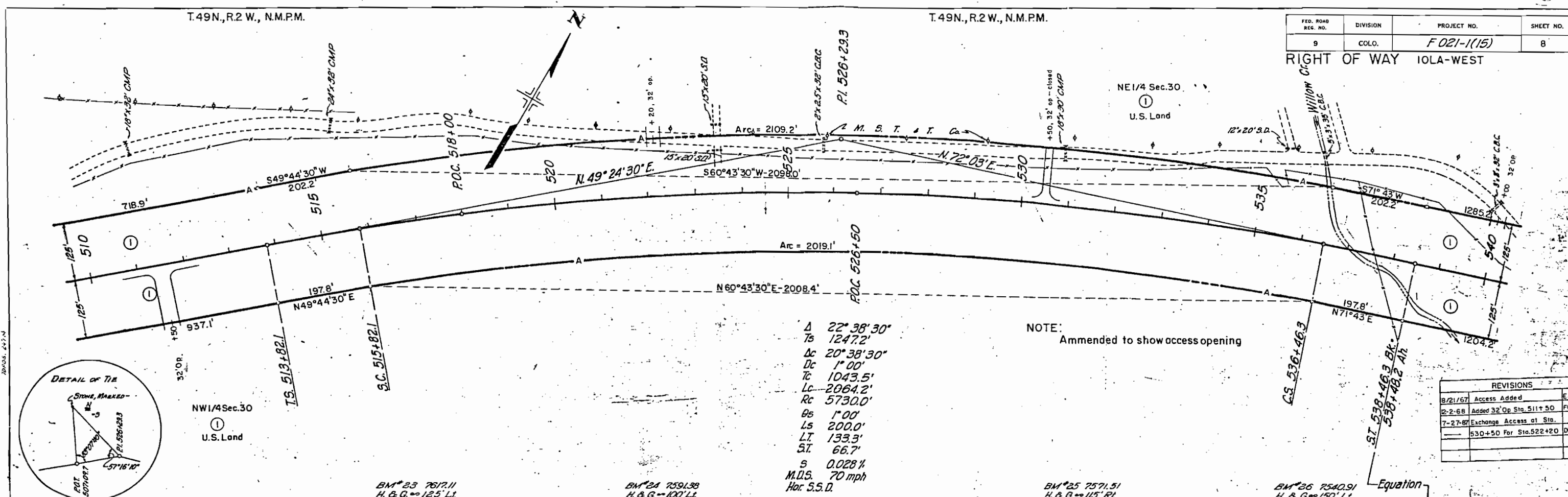


T.49N.,R.2 W., N.M.P.M.

T.49N.,R.2 W., N.M.P.M.

FED. ROAD REG. NO.	DIVISION	PROJECT NO.	SHEET NO.
9	COLO.	F 021-1(15)	8

RIGHT OF WAY IOLA-WEST



NW1/4 Sec. 30
U.S. Land

NOTE:
Amended to show access opening

Δ 22° 38' 30"
 T_s 1247.2'
 D_c 20° 38' 30"
 D_c 1' 00"
 T_c 1043.5'
 L_c 2064.2'
 R_c 5730.0'
 G_s 1' 00"
 L_s 200.0'
 L_T 133.3'
 S_T 66.7'
 S 0.028 %
 M.U.S. 70 mph
 Hor. S.S.D.

REVISIONS		
8/21/67	Access Added	EJM
2-2-68	Added 32' Op Sta. 511+50	FCM
7-27-67	Exchange Access at Sta.	
	530+50 For Sta. 522+20	DPT

BM# 23 7617.11
H. & G. = 125' LI
STA. 516+00

Test No. 27
A-7-G(9)
L1=41
PI=21
% 200=56
C.B.R.=3.5

BM# 24 7591.38
H. & G. = 100' LI
STA. 523+00

Test No. 27A
A-G(21)
L1=34
PI=12
% 200=41
R=46

Test No. 28
A-2-G(9)
Similar to No. 27
C.B.R.=3.5

Test No. 28A
A-G(21)
Similar to No. 27A
R=46

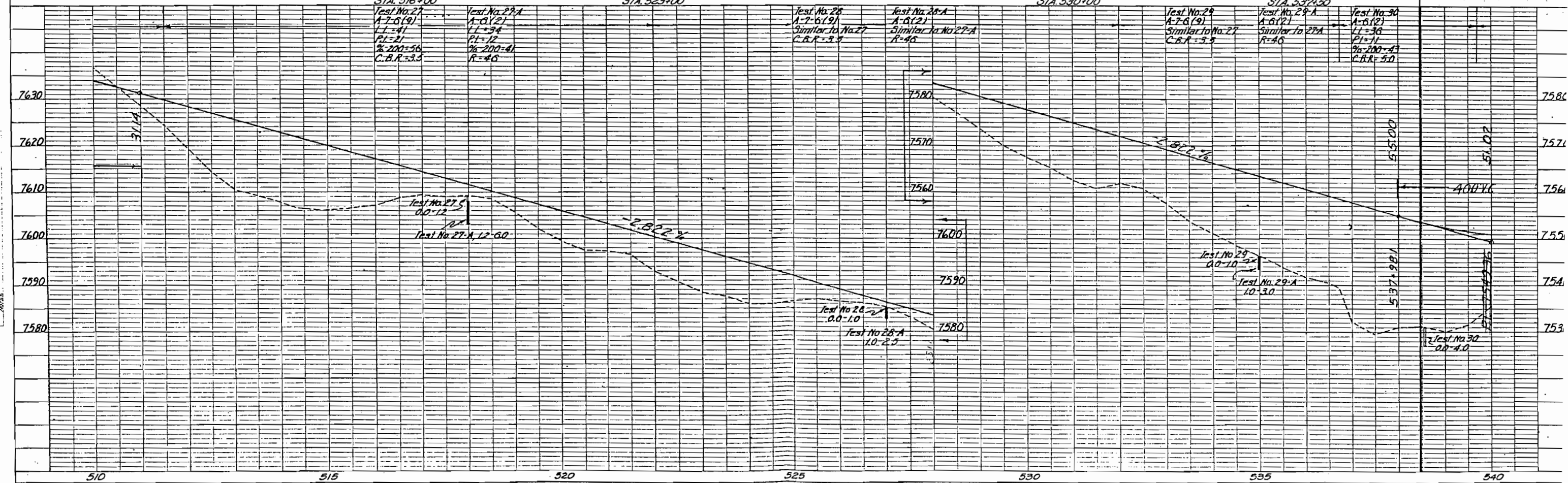
BM# 25 7571.51
H. & G. = 115' RI
STA. 530+00

Test No. 29
A-7-G(9)
Similar to No. 27
C.B.R.=3.5

BM# 26 7540.91
H. & G. = 150' LI
STA. 537+00

Test No. 29A
A-G(21)
Similar to 27A
R=46

Equation



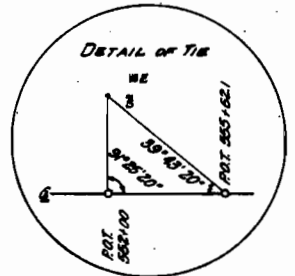
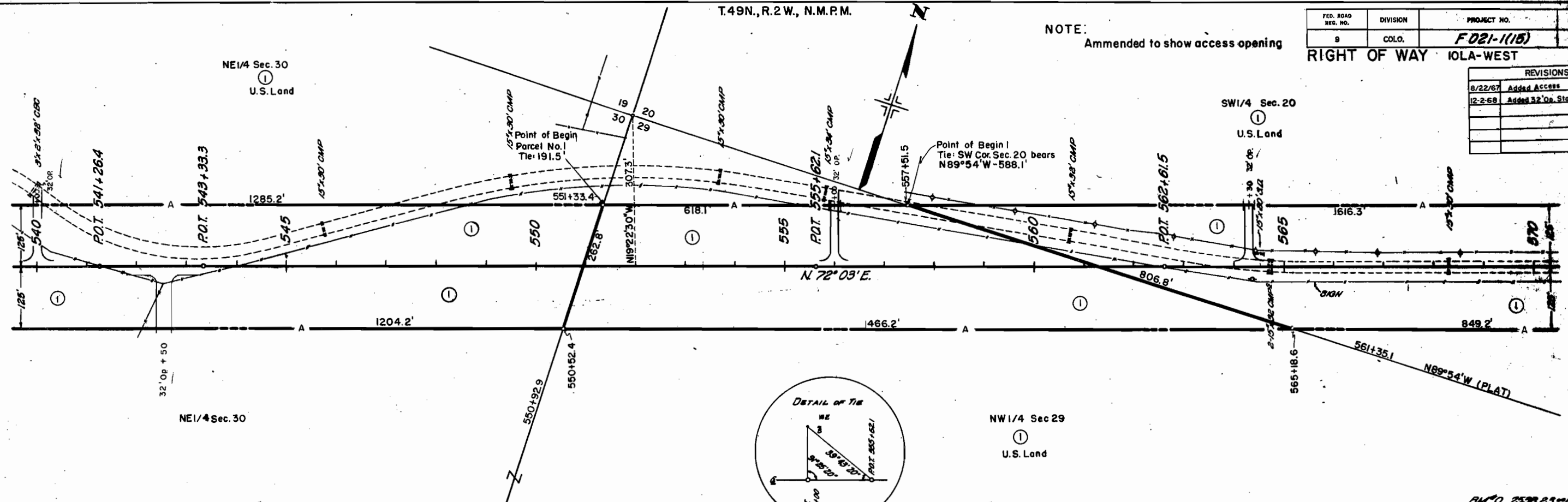
T.49N., R.2W., N.M.P.M.

NOTE:
Amended to show access opening

FED. ROAD REG. NO.	DIVISION	PROJECT NO.	SHEET NO.
9	COLO.	F021-1(15)	9

RIGHT OF WAY IOLA-WEST

REVISIONS		
8/22/67	Added Access	EJM
12-2-68	Added 32' Op. Sta. 542+50	PCW



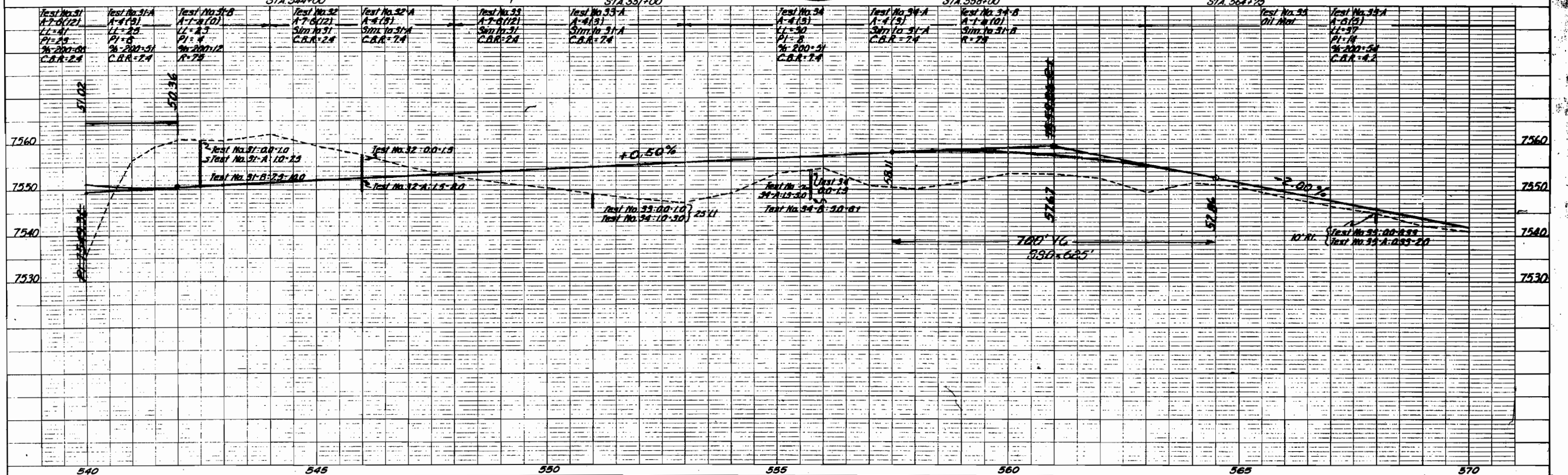
BM #27 7556.67
H. & G. = 100' RT.
STA. 544+00

BM #28 7549.08
H. & G. = 100' RT.
STA. 551+00

BM #29 7554.58
H. & G. = 90' LI.
STA. 558+00

BM #30 7553.08
H. & G. = 94' LI.
STA. 564+25

BM #0 7538.25 = 100' RT.
565+92.8 F 081-1(25)
101+30 CC-10-0006-31

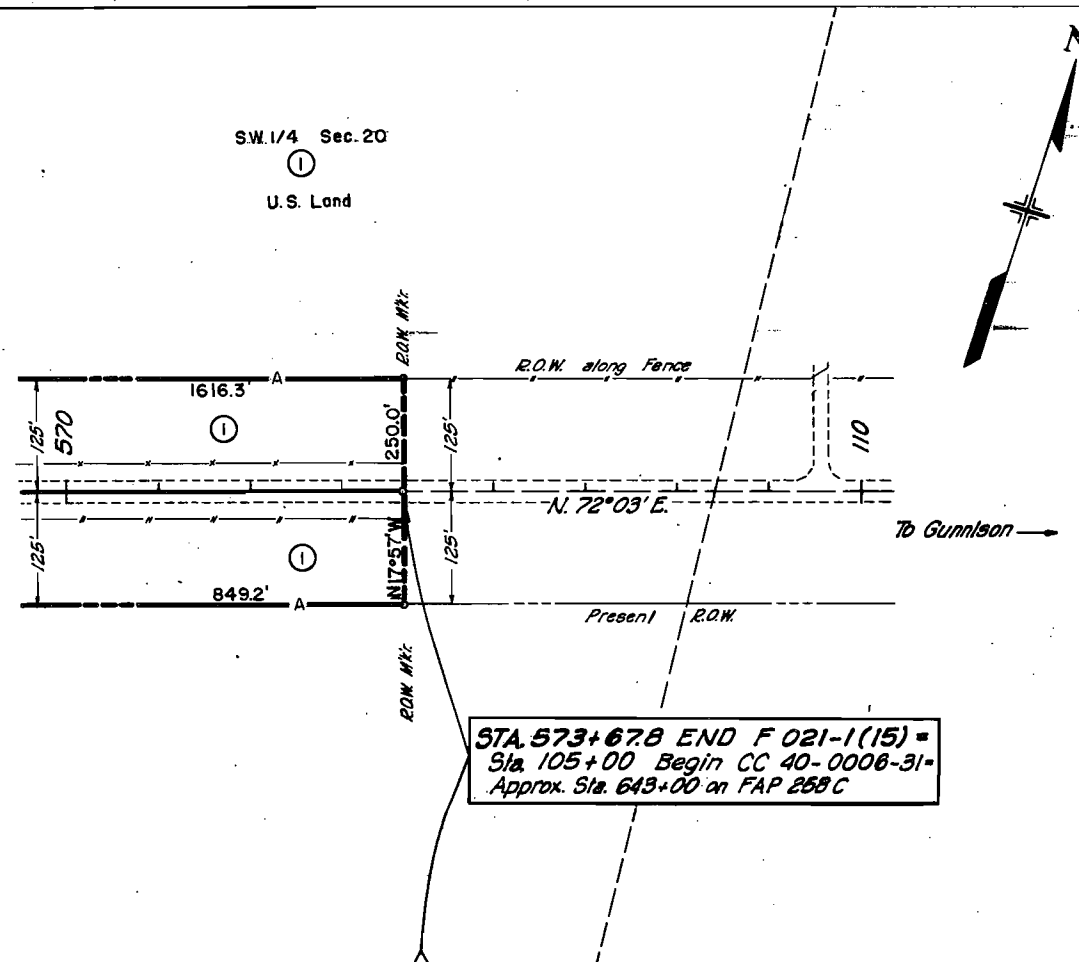


T.49N, R.2W., N.M.P.M.

FED. ROAD REG. NO.	DIVISION	PROJECT NO.	SHEET NO.
9	COLO.	F 021-1(15)	10

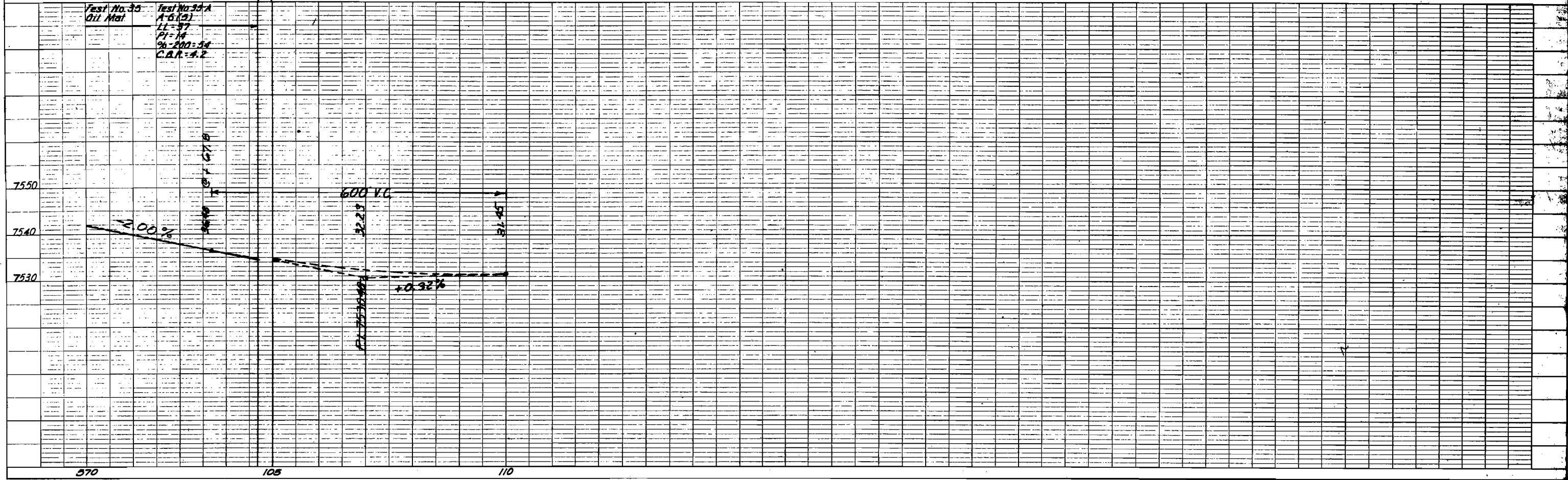
RIGHT OF WAY IOLA-WEST

REVISIONS		
Date	Description	By
8/22/67	Added Access	EJM



STA 573+67.8 END F 021-1(15) =
 Sta. 105+00 Begin CC 40-0008-31-
 Approx. Sta. 643+00 on FAP 258 C

Test No. 35
 Oil Mat
 Test No. 35-A
 A-6(2)
 LL-37
 PI-14
 % - 200 = 54
 C.B.R. = 4.2



NOTE BOOK GRADES CHECKED
 B. M. NOTED
 NO. 22222
 22222