



COLORADO
Department of
Transportation

DOCUMENT SEPARATOR SHEET

REGION 5 – JUNE 2017 CONVERSION

To be placed at the beginning of each separator sheet.



r500001921

Description:

ROW Plans 11X17

Route # and Mile Points:

US 160

Originating Office:

ROW/Survey

File Name:

F 022-2(26)_ROW(.PDF)

Box Location:

30 of 38

945

950

955

N 87° 41' E

Sta. 944+50
Reqd. 24" x 60" C.M.P. Cross
Culvert & 15 Cu. Yds. uncl.
excavation for Inlet & Outlet.

Sta. 950+25
Reqd. 30" x 68" C.M.P. Cross
Culvert & 15 Cu. Yds. uncl.
excavation for Inlet & Outlet.

Sta. 954+00 to 959+02
Reqd. 602 Lin. Ft. of
Picket Snow Fence.

SW 4 SEC 27

Sta 430+30
44' x 60' CMP
Cross Culvert

Sta 934+48.8

Sta 934+48.8
44' x 60' CMP
Cross Culvert

Sta 934+48.8

Scale
1" = 100'

R 4E. N MPM

SW 4 SEC 27 T 40N R 4E

Wire Cable Guard Fence tabulated on sheet No. 5.
Right of Way Markers " " " 5.
Leaving Requirements " " " 3 & 4.
Picket Snow Fence " " " 5.

SE 1/4 SEC 28
S/2 SEC 27

Sta 915+85
Reqd. 12 x 10" MP
Cross Culvert
Remove 15' x 20' CMP
Cross Culvert
Reqd. 5 Cu. Yds. uncl.
excavation for inlet.

Sta 918+00 to 925+02
Reqd. 702 Lin. Ft. of
Picket Snow Fence.

STA. 913 + 00
END OF F.A.P. 243-F.
BEGINNING OF F.A.P. 243-I.

SE 4 SEC 28 T 40 N R 4 E

960

965

970

975

P.C. 961+40.5

Dry Wash

Sta. 964+35
Reqd. 24' x 56' C.M.P.
Cross Culvert & 5
Cu. Yds. uncl. excav.
ation for outlet.

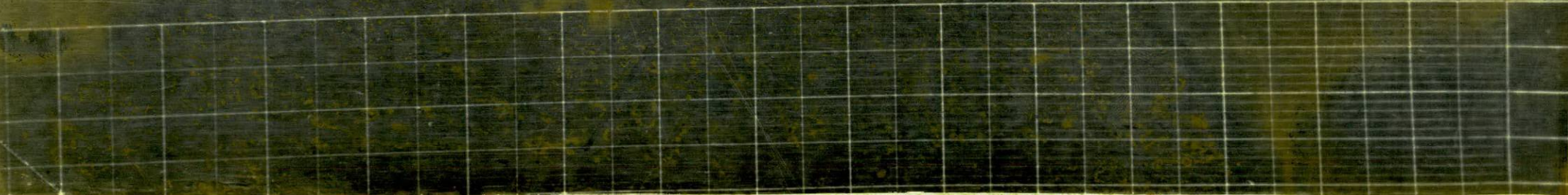
Sta. 970+00
Reqd. 18' x 56' C.M.P.
Cross Culvert.

Sta. 972+00 to 975+02
Reqd. 302 Lin. Ft. of
Picket Snow Fence.

Present Road To Del Norte

$\Delta = 15^{\circ}30' R$
 $D = 0^{\circ}30'$
 $T = 1559.6'$
 $L = 3100.0'$
 $R = 114600$

SE 4 SEC. 27 T. 40 N. R. 4 E. N. M. P. M.



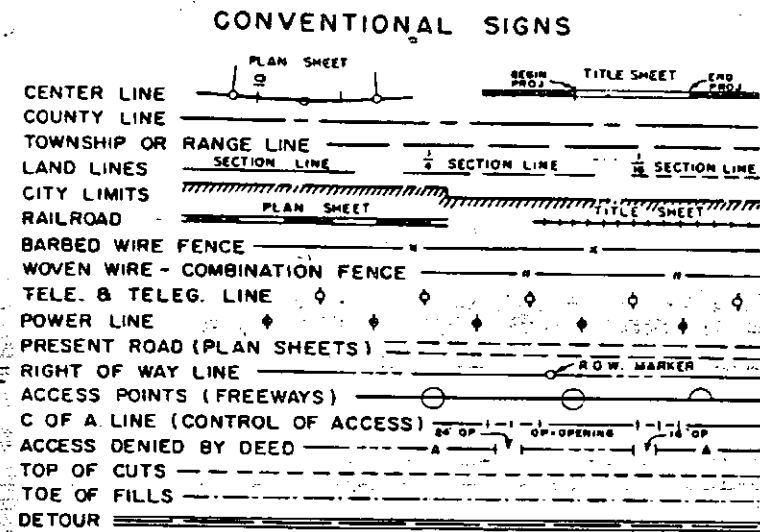
DEPARTMENT OF HIGHWAYS STATE OF COLORADO

AS CONSTRUCTED
REVISED DATE DEC 1 4 1965

FEDERAL ROAD REGION NO.	DIVISION	PROJECT NO.	SHEET NO.
9	COLORADO	F022-2(26)	1

INDEX OF SHEETS

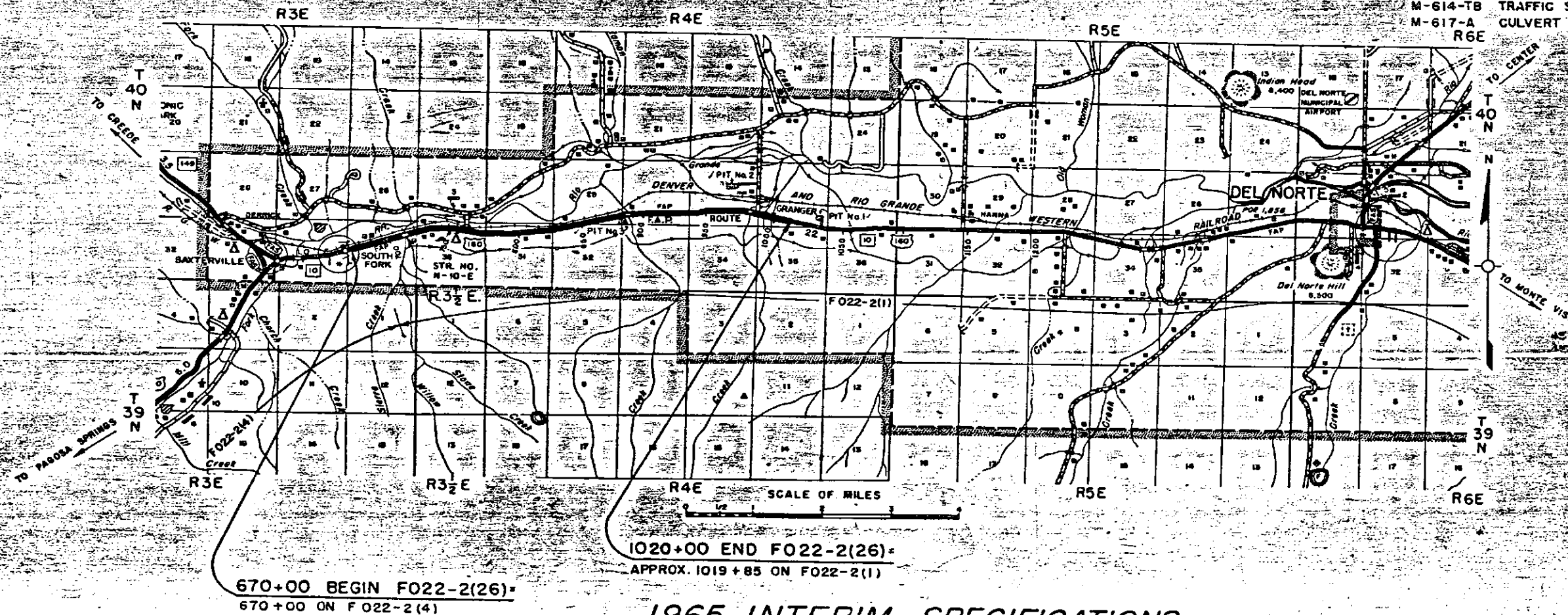
SHEET NO. 1	SKETCH MAP AND TITLE PAGE.
2	TYPICAL CROSS SECTION OF IMPROVEMENT AND GENERAL NOTES.
3	SUMMARY OF FINAL QUANTITIES.
4	TABULATION OF LENGTH AND DESIGN DATA, AND DETAILS OF SPEED CHANGE LANE
4 x	DELINEATORS, FENCING TABULATION, GUARD RAIL, SURFACING PLAN,
	BASE COURSE PLAN, SCALE BOOK TABULATION, AND WETTING
5-66 x	FINAL LIST OF STRUCTURES EARTHWORK
7	TABULATION OF AC 120-150, AND MC-70, SUMMARY OF FINAL QUANTITIES.
8	PIT SKETCHES
9-20	ALIGNMENT PLAN AND PROFILE.
21-24	BASE OF CUTS AND FILLS, COMPACTION
25-30	STRUCTURE CROSS SECTIONS.
31-	DETOUR CROSS SECTIONS
32-36	BORROW PIT CROSS SECTIONS
M-203-A	SUPERELEVATION AND WIDENING OF CURVES - CROWNED HIGHWAYS JULY 1, 1965
M-203-B	APPROACH ROADS, FLARING, CUT SLOPE TREATMENT, BRIDGE AND
	CREST WIDENING JULY 1, 1965
M-203-C	DITCH TYPES JULY 1, 1965
M-206-A	EXCAVATION AND BACKFILL FOR STRUCTURES (2 SHEETS) DEC. 7, 1965; JULY 1, 1965
M-603-C	HEADWALLS AND END SECTIONS FOR CSP CULVERTS JULY 1, 1965
M-606-A	GUARD RAIL DEC. 7, 1965
M-607-A	WIRE FENCES AND GATES (2 SHEETS) JULY 1, 1965
M-612-C	DELINEATORS (2 SHEETS) JULY 1, 1965
M-614-A	TIMBER BARRICADES JULY 1, 1965
M-614-TA	IDENTIFICATION SIGNS JULY 1, 1965
M-614-TB	TRAFFIC SIGNING FOR HIGHWAY CONSTRUCTION (3 SHEETS) JULY 1, 1965
M-617-A	CULVERT PIPE JULY 1, 1965



PLAN AND PROFILE OF ~~PROPOSED~~ FEDERAL AID PROJECT NO. F022-2(26) STATE HIGHWAY NO. 10 RIO GRANDE COUNTY AS CONSTRUCTED

SCALES OF ORIGINAL DRAWINGS
ON PLAN, 1 IN. = 100 FT.
ON PROFILE, 1 IN. = 100 FT. HORIZONTAL
1 IN. = 10 FT. VERTICAL
GRADE LINE ON PROFILE IS SHOWN AS GRADE OF FINISHED ROAD
GROSS LENGTH OF PROJECT } 34,999.8 FT. = 6.629 MI.
NET LENGTH OF PROJECT }

CONTRACTOR PIONEER CONSTR. CO.
PROJECT ENGR. TED WAGNER
RESIDENT ENGR. C.J. DUTTON
DATE COMPLETED SEPT. 25th 1966



SEE SPECIAL PROVISIONS FOR
NOTICE TO BIDDERS

DEPARTMENT OF HIGHWAYS
STATE OF COLORADO

APPROVED: *[Signature]* 2-4-66
CHIEF ENGINEER DATE

DEPARTMENT OF COMMERCE
BUREAU OF PUBLIC ROADS

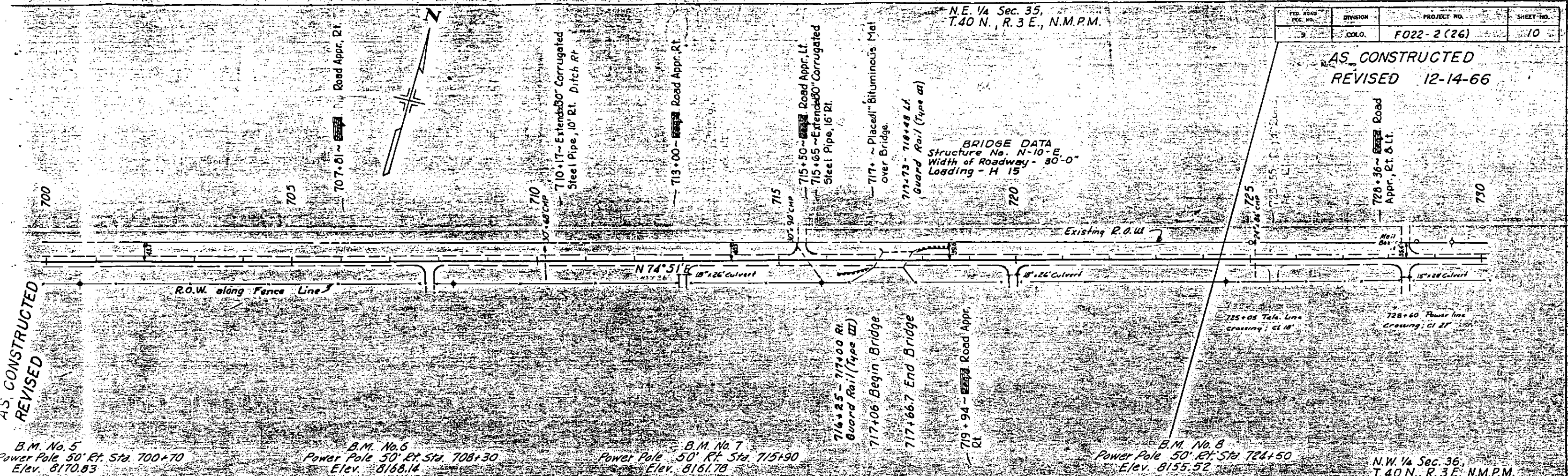
APPROVED: _____ DATE _____
DIVISION ENGINEER

1965 INTERIM SPECIFICATIONS
REVISED DECEMBER 1, 1965

N.E. 1/4 Sec. 35,
T.40 N., R.3 E., N.M.P.M.

FED. ROAD REC. NO.	DIVISION	PROJECT NO.	SHEET NO.
9	COLO.	F022-2(26)	10

AS CONSTRUCTED
REVISED 12-14-66



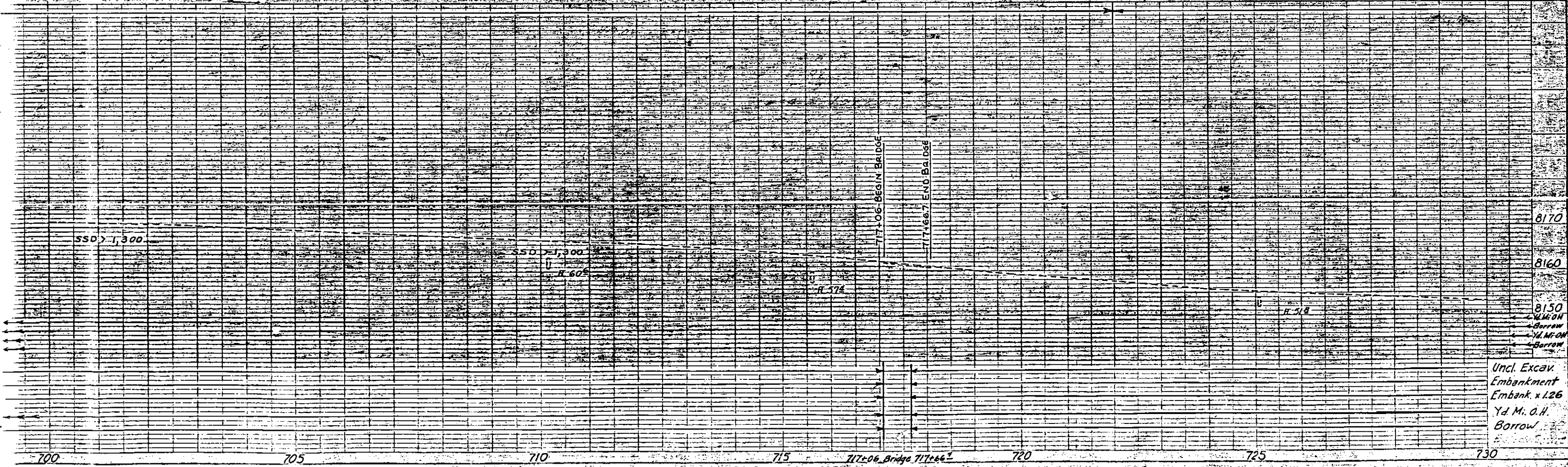
B.M. No. 5
Power Pole 50' Rt. Sta. 700+70
Elev. 8170.83

B.M. No. 6
Power Pole 50' Rt. Sta. 708+30
Elev. 8168.14

B.M. No. 7
Power Pole 50' Rt. Sta. 715+90
Elev. 8161.78

B.M. No. 8
Power Pole 50' Rt. Sta. 724+50
Elev. 8155.52

N.W. 1/4 Sec. 36,
T.40 N., R.3 E., N.M.P.M.



N.E. 1/4 Sec. 36
T.40 N., R.3 E. N.M.P.M.

N.W. 1/4 Sec. 31
T.40 N., R.4 E. N.M.P.M.

FED. ROAD DIST. NO.	DIVISION	PROJECT NO.	SHEET NO.
9	COLO.	FO22-2(26)	12

AS CONSTRUCTED
REVISED 12-14-66

REVISED

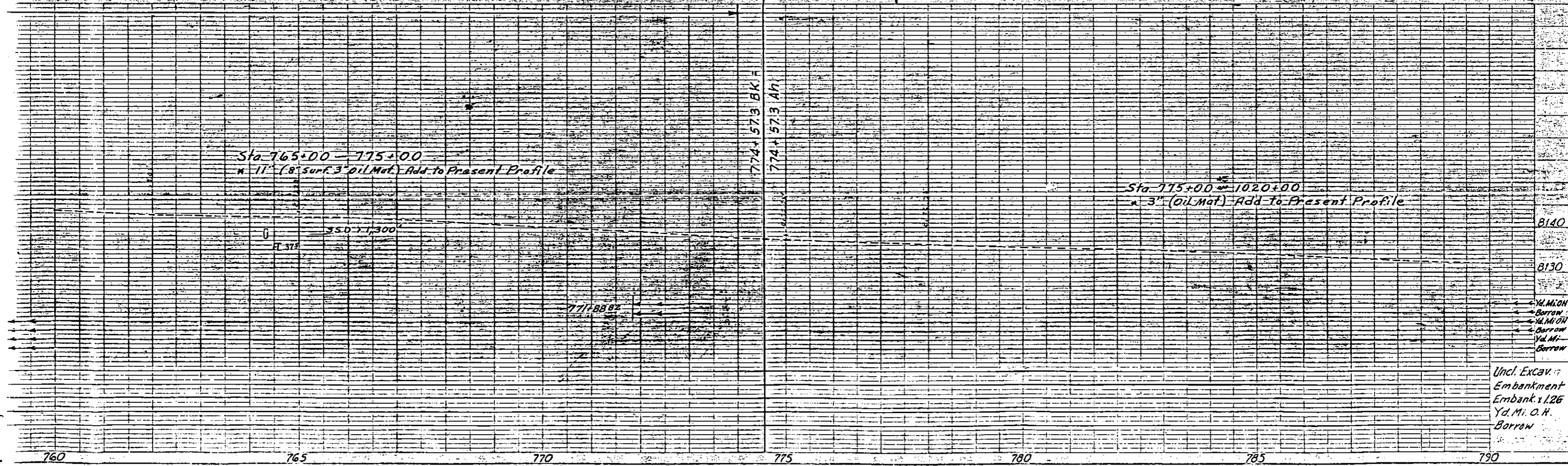
B.M. No. 13
at Pole 50' Lt. Sta. 767+40
Elev. 8140.39

B.M. No. 14
Power Pole 75' Lt. Sta. 779+00
Elev. 8135.88

B.M. No. 15
Telephone Pole 50' Rt. Sta. 779+00
Elev. 8132.22

(Projected Line)
 Δs 9°17' Lt.
 T_s 332.6'
 E_s 10.0'
 Δc 5°17'
 D_c 2°00'
 T_c 132.2'
 L_c 6264.2'
 R_c 2865.0'
 $S.S.D.$ 1,015'
 S 0.055'
 $Trans.$ 200'
 $M.O.S.$ 70 M.P.H.

(Survey Line)
 Δ 9°17' Lt.
 D 2°00'
 T 232.6'
 L 464.2'
 R 2,865.0'



Sta. 765+00 - 775+00
* 11' (8' Surf 3' Oil Mat) Add to Present Profile

Sta. 775+00 - 1020+00
* 3' (Oil Mat) Add to Present Profile

Uncl. Excav.
Embankment
Yd. Mi. O.H.
Borrow

N.E. 1/4 Sec. 31
T.40N., R.4E. N.M.P.M.

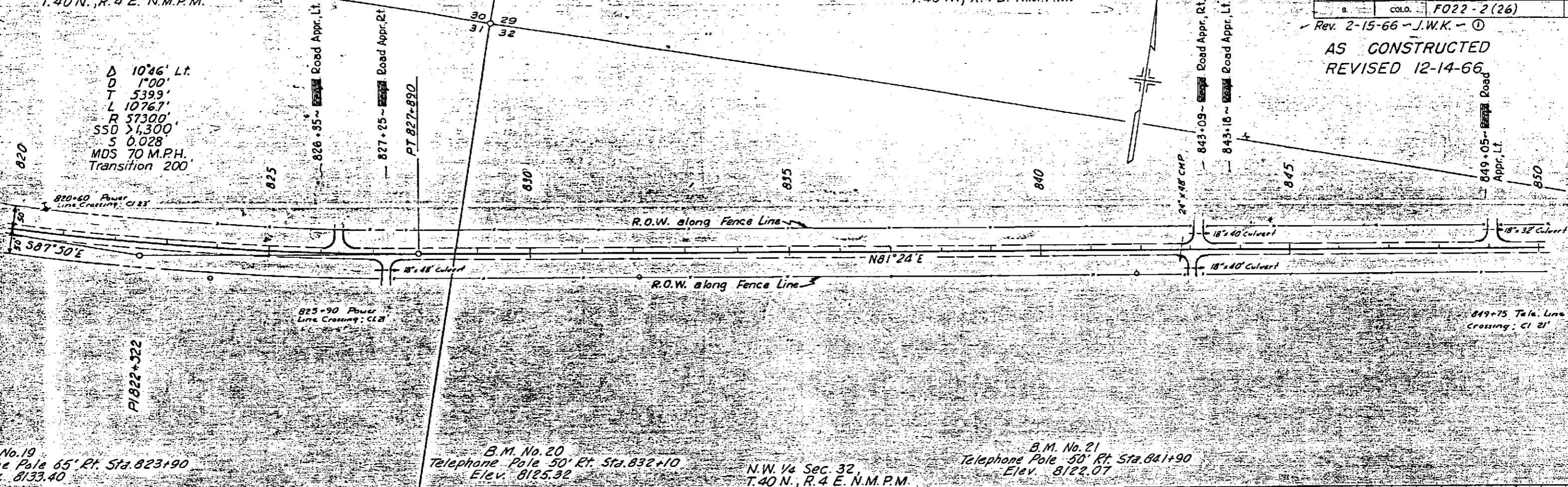
S.W. 1/4 Sec. 29,
T.40N., R.4E. N.M.P.M.

FED. ROAD REG. NO.	DIVISION	PROJECT NO.	SHEET NO.
9	COLO.	F022-2(26)	14

Rev. 2-15-66 - J.W.K. - ①
AS CONSTRUCTED
REVISED 12-14-66

D 1046' Lt.
D 1'00'
T 5399'
L 10767'
R 57300'
SSD 1,300'
S 0.028
MDS 70 M.P.H.
Transition 200'

UNCONSTRUCTED
REVISED

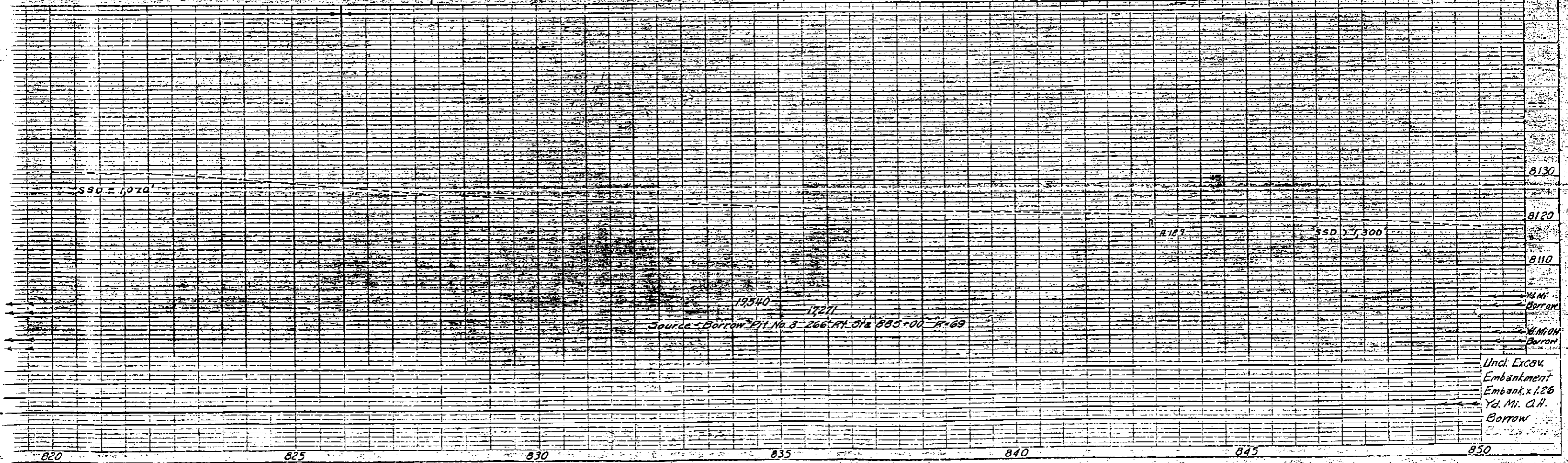


B.M. No. 19
Telephone Pole 65' Rt. Sta. 823+90
Elev. 8133.40

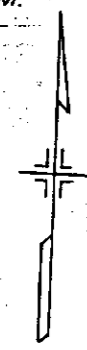
B.M. No. 20
Telephone Pole 50' Rt. Sta. 832+10
Elev. 8125.32

N.W. 1/4 Sec. 32,
T.40N., R.4E. N.M.P.M.

B.M. No. 21
Telephone Pole 50' Rt. Sta. 841+90
Elev. 8122.07



S.E. 1/4 Sec. 29,
T. 40 N., R. 4 E. N.M.P.M.



FED. ROAD DIST. NO.	DIVISION	PROJECT NO.	SHEET NO.
9	COLO.	F022-2(26)	16

Rev. 2-15-66 - J.W.K. - ①
AS CONSTRUCTED
REVISED 12-14-66

AS CONSTRUCTED
REVISED

884+83 ~ 884+89 Road Appr. Rt.
884+89 ~ Extended 18" Corrugated Steel Pipe, 8' Lt. & 10' Lt. End Sections, 55° Elbow for 18" Corrugated Steel Pipe Lt.

885+00 ~ 885+46 Road Appr. Rt.
885+46 ~ Road Appr. Lt.

886+ ~ Removed Bridge

886+28 ~ 24" x 72" Cross Culvert With End Sections, Ditches
886+61 ~ 48" x 88" Cross Culvert with End Sections
D.A. = 10 Sq. Miles

887+72 ~ Extended 18" Corrugated Steel Pipe 12' Lt. & 8' Rt. Ditches

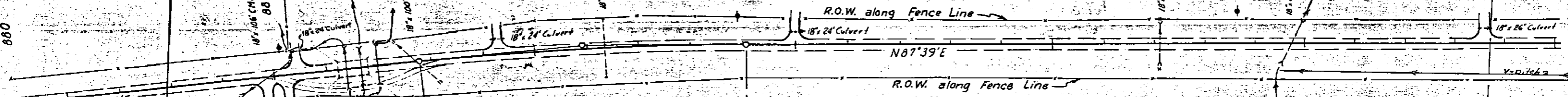
889+29 ~ Road Appr. Lt.

895+00 ~ Road Appr. Lt.
Removed & Relayed 18" x 24" CSR Side drain Lt.

902+09 ~ Extended 18" Corrugated Steel Pipe 8' Lt. & 4' Rt. End Sections, Ditches

904+75 ~ Extended 18" Corrugated Steel Pipe 20' Lt. & 8' Rt. End Sections, Ditches

908+60 ~ Road Appr. Lt.



BRIDGE DATA
Structure No. N-10-F
Width - 29'-0"
Loading - HS-20-44

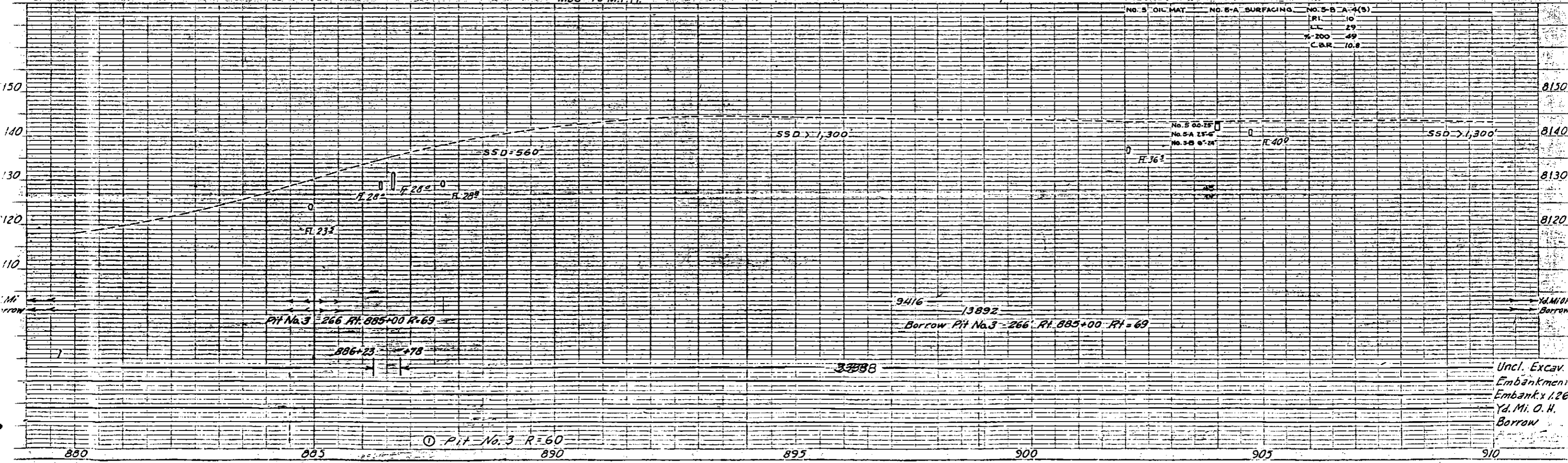
Δ 6°15' Rt.
D 1'00'
T 3128'
L 6250'
R 57300'
SSD > 1,300'
S 0.028 Transition 200' Elev. 8146.20
MDS 70 M.P.H.

B.M. No. 26
Telephone Pole 50' Rt. Sta. 884+10
Elev. 8124.09

B.M. No. 27
Power Pole 60' Lt. Sta. 893+90
Elev. 8146.20

S.W. 1/4 Sec. 28
T. 40 N., R. 4 E. N.M.P.M.

B.M. No. 28
Power Pole 65' Lt. Sta. 903+65
Elev. 8138.63



S.E. 1/4 Sec. 28
T. 40 N., R. 4 E. N.M.P.M.

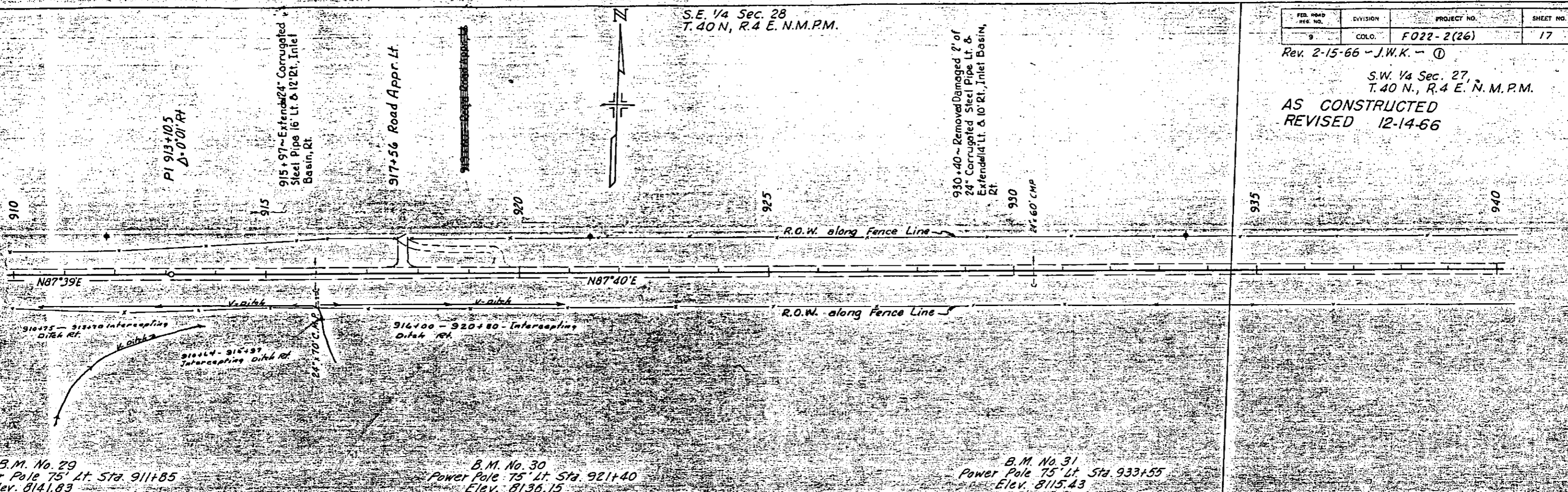
FED. ROAD REG. NO.	DIVISION	PROJECT NO.	SHEET NO.
9	COLO.	F022-2(26)	17

Rev. 2-15-66 - J.W.K. - ①

S.W. 1/4 Sec. 27,
T. 40 N., R. 4 E. N.M.P.M.

AS CONSTRUCTED
REVISED 12-14-66

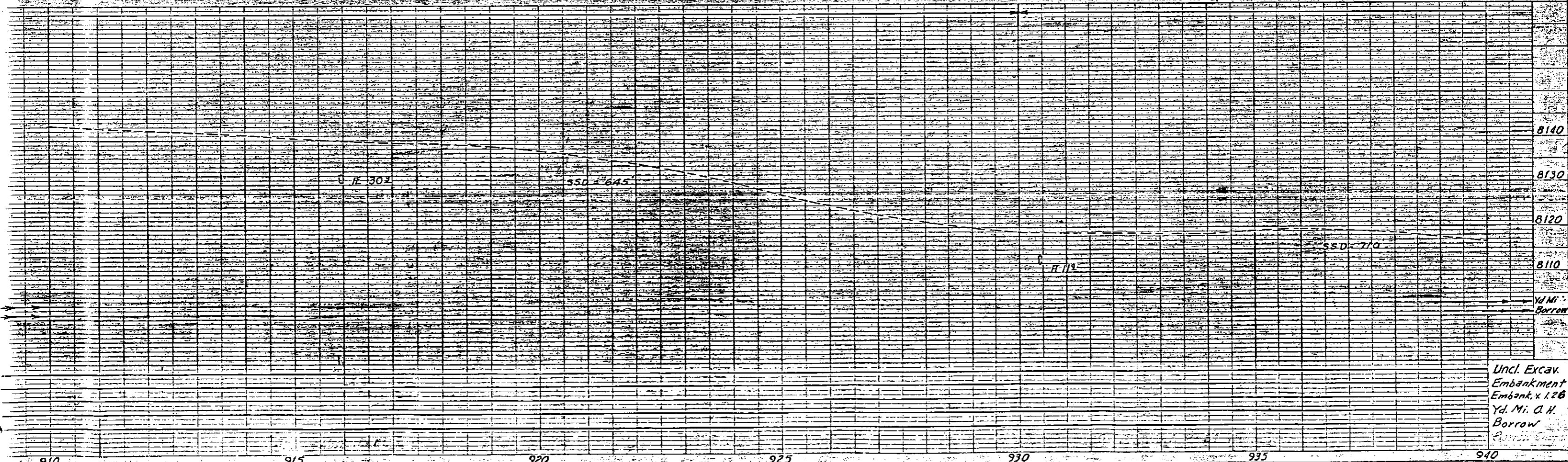
AS CONSTRUCTED
REVISED

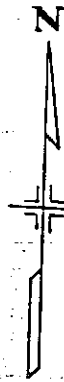


B.M. No. 29
Power Pole 75' Lt. Sta. 911+85
Elev. 8141.83

B.M. No. 30
Power Pole 75' Lt. Sta. 921+40
Elev. 8136.15

B.M. No. 31
Power Pole 75' Lt. Sta. 933+55
Elev. 8115.43





944+62 ~ End Sections, Rt. & Lt., Inlet Basin, Rt. Dyke etc.

S.W. 1/4 Sec. 27, T.40 N., R.4 E., N.M.P.M.

24" 60' CMP (OUTLET PLUGGED)

950+37 ~ Extended 30" Corrugated Steel Pipe 8' Lt., 2-36" x 76" Cross Culverts, Outlet Ditches. D.A. = 650 Acres

964+14 ~ Removed/Damaged 2' of 24" Corrugated Steel Pipe, Lt. & Extend 10' Rt. & 20' Lt., End Sections, Inlet Basin, 14' Lt. from STA

24" 55' CMP (INLET & OUTLET DAMAGED)

Rev. 2-15-66 - J.W.K. S.E. 1/4 Sec. 27, T.40 N., R.4 E. N.M.P.M. AS CONSTRUCTED REVISED 12-14-66

969+13 ~ Removed/Damaged 2' of 18" Corrugated Steel Pipe, Rt. & Extend 10' Rt. & 14' Lt., End Sections, Ditches Dyke etc.

FED. ROAD DIST. NO.	DIVISION	PROJECT NO.	SHEET NO.
9	COLO.	F022-2(26)	18

940

945

950

955

960

965

970

R.O.W. along Fence Line

R.O.W. along Fence Line

N87° 40' E

PC 961+554

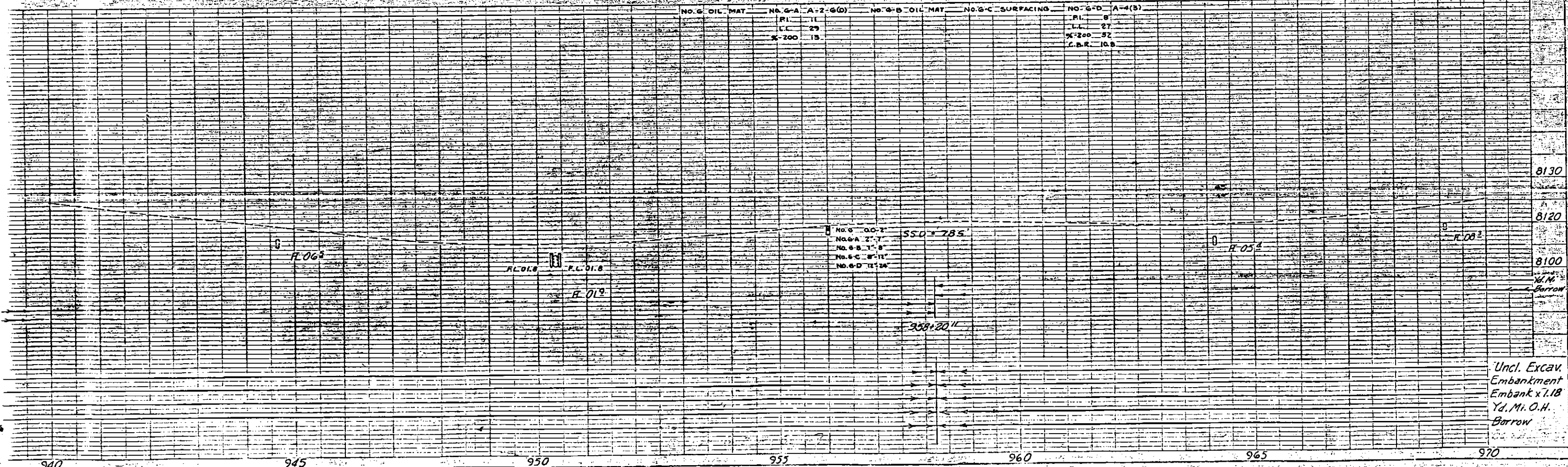
UNCONSTRUCTED REVISED

B.M. No. 32 Power Pole 75' Lt. Sta. 941+30 Elev. 8113.33

B.M. No. 33 Power Pole 75' Lt. Sta. 950+10 Elev. 8103.20

B.M. No. 34 Power Pole 75' Lt. Sta. 958+55 Elev. 8109.50

B.M. No. 35 on Fence Post 75' Lt. Sta. 968+00 Elev. 8107.20



Uncl. Excav. Embankment x 1.18 Yd. Mi. O.H. Borrow

940

945

950

955

960

965

970

S.E. 1/4 Sec. 27
T.40 N., R.4 E. N.M.P.M.

FED. ROAD DIST. NO.	DIVISION	PROJECT NO.	SHEET NO.
9	COLO.	F022-2(26)	19

Rev. 2-15-66 - J.W.K. - ①
AS CONSTRUCTED
S.W. 1/4 Sec. 26
T.40 N., R.4 E. N.M.P.M. REVISED 12-14-66

AS CONSTRUCTED
REVISED

975+50 ~ 18" 30' Side
Drain & Road Appr., Rt.

PI 977+150

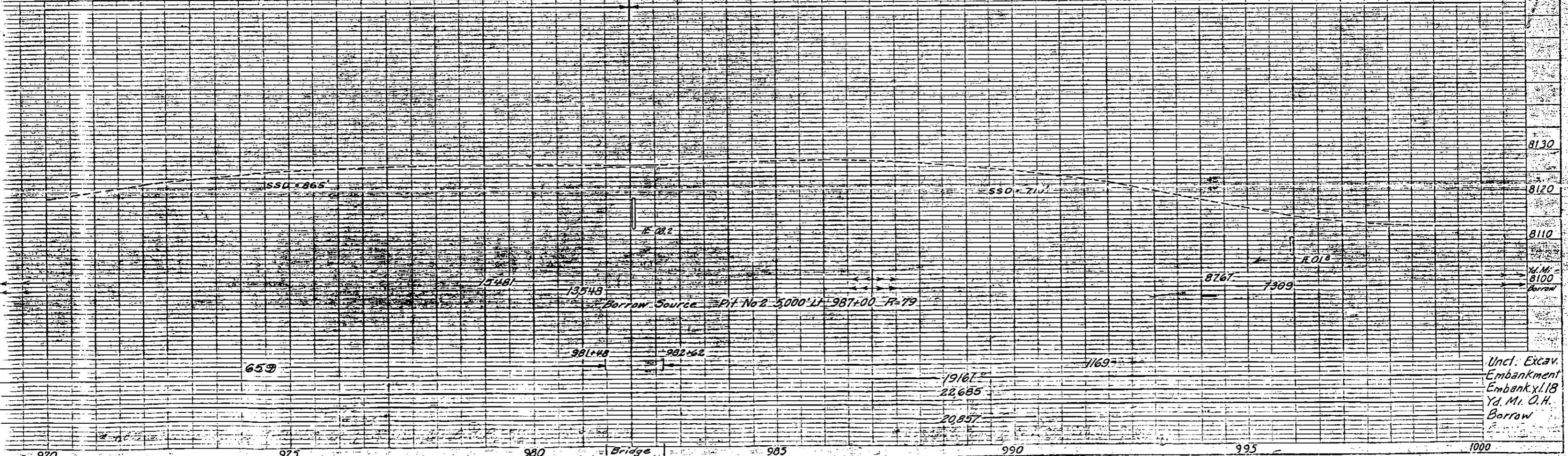
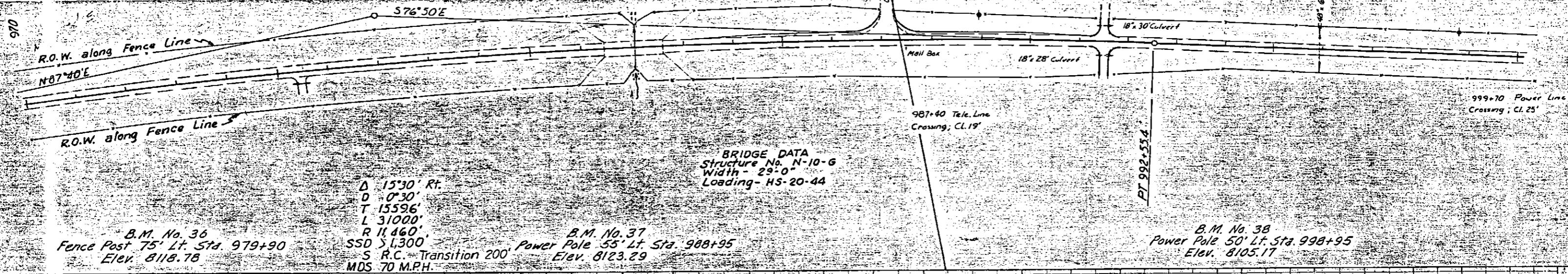
981+ ~ Remove Bridge, Fill in
County Road

982+05 ~ 84" 94" S.P.
Cross Culvert
Ditches (W-4)
D.A. 800 Acres. 24 Obtained
From S.H.D. Extended
12' L.I.P. Rt.

987+00 ~ Road Appr., Lt. &
350' Accel. & Decel. Lanes, Lt.
(Details on Sh. No. 4)

991+50 ~ Road Appr., Rt. & Lt.
Removed & Relayed 18' 30'
Side Dr. Lt.

995+94 ~ Removed Damaged 4' Rt.
and Extended 48' Corrugated Steel
Pipe 18' Rt. & 22' Lt. Outlet Ditch



S.W. 1/4 Sec. 26
T. 40 N., R. 4 E. N.M.P.M.

S.E. 1/4 Sec. 26
T. 40 N., R. 4 E. N.M.P.M.

FED. ROAD REG. NO.	DIVISION	PROJECT NO.	SHEET NO.
2	COLO.	F022-2(26)	20

Rev. 2-15-66 - J.W.K. - ①
AS CONSTRUCTED
REVISED 12-14-66

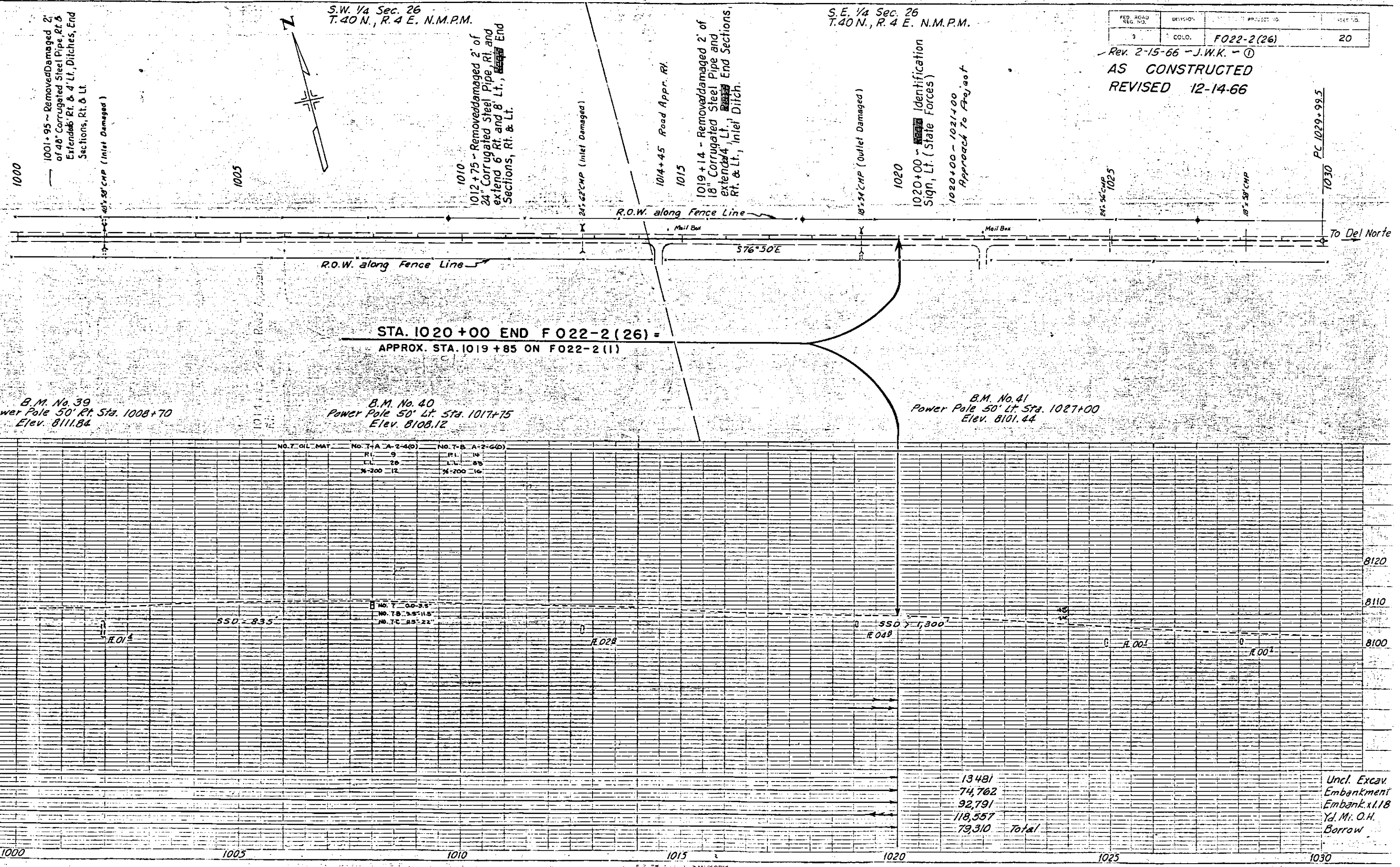
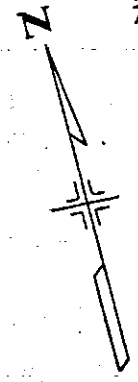
AS CONSTRUCTED
REVISED

1001+95 - Removed Damaged 2' of 48" Corrugated Steel Pipe, Rt. & Extended 6' Rt. & 4' Lt., Ditches, End Sections, Rt. & Lt.
10' x 58" CMP (Inlet Damaged)

1012+75 - Removed Damaged 2' of 24" Corrugated Steel Pipe, Rt. and extend 6' Rt. and 8' Lt., End Sections, Rt. & Lt.

1019+14 - Removed Damaged 2' of 18" Corrugated Steel Pipe and extend 4' Lt., End Sections, Rt. & Lt., Inlet Ditch.

1020+00 - Identification Sign, Lt. (State Forces)
1020+00 - 1021+00 Approach to Project



STA. 1020+00 END F 022-2(26) =
APPROX. STA. 1019+85 ON F022-2(1)

B.M. No. 39
Power Pole 50' Rt. Sta. 1008+70
Elev. 8111.84

B.M. No. 40
Power Pole 50' Lt. Sta. 1017+75
Elev. 8108.12

B.M. No. 41
Power Pole 50' Lt. Sta. 1027+00
Elev. 8101.44

NO. 7 OIL MAT	NO. 7-A A-2-4(0)	NO. 7-B A-2-6(0)
RI. 9	RI. 14	RI. 14
LL 28	LL 55	LL 55
X-200 12	X-200 16	X-200 16

NO. 7 00-3.5
NO. 7B 3.5-11.5
NO. 7C 11.5-22

SSD 1,300'

13481
74,762
92,791
118,557
79,310 Total

Uncl. Excav
Embankment
Embank. x 1.18
Yd. Mi. O.H.
Borrow

20
110
100
10

8120
8110
8100

1000 1005 1010 1015 1020 1025 1030

PC 1029+99.5

1030

To Del Norte

SH # 160 F022-2 (26) 1966
 Sec 36 T40N R3E

N.W. 1/4 Sec. 36
 T40N, R.3E. N.M.P.M.

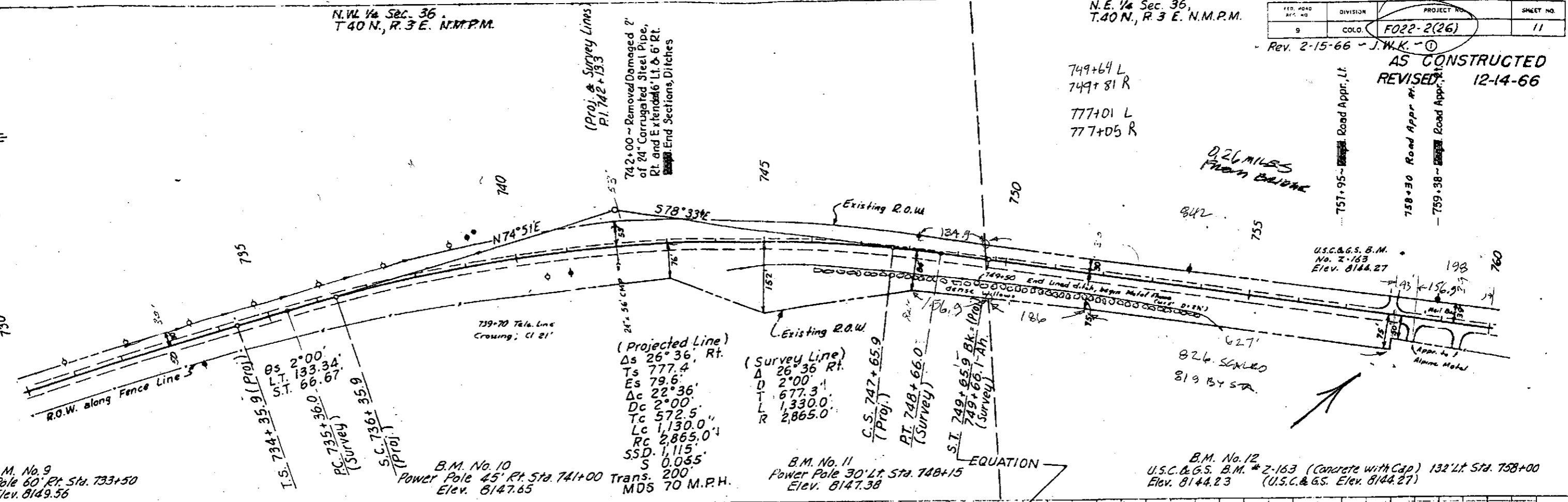
N.E. 1/4 Sec. 36,
 T.40N, R.3 E. N.M.P.M.

110, 2040 REV. NO.	DIVISION	PROJECT NO.	SHEET NO.
9	COLO.	F022-2(26)	11

Rev. 2-15-66 - J.W.K. - ①

AS CONSTRUCTED
 REVISED 12-14-66

AS CONSTRUCTED
 REVISED



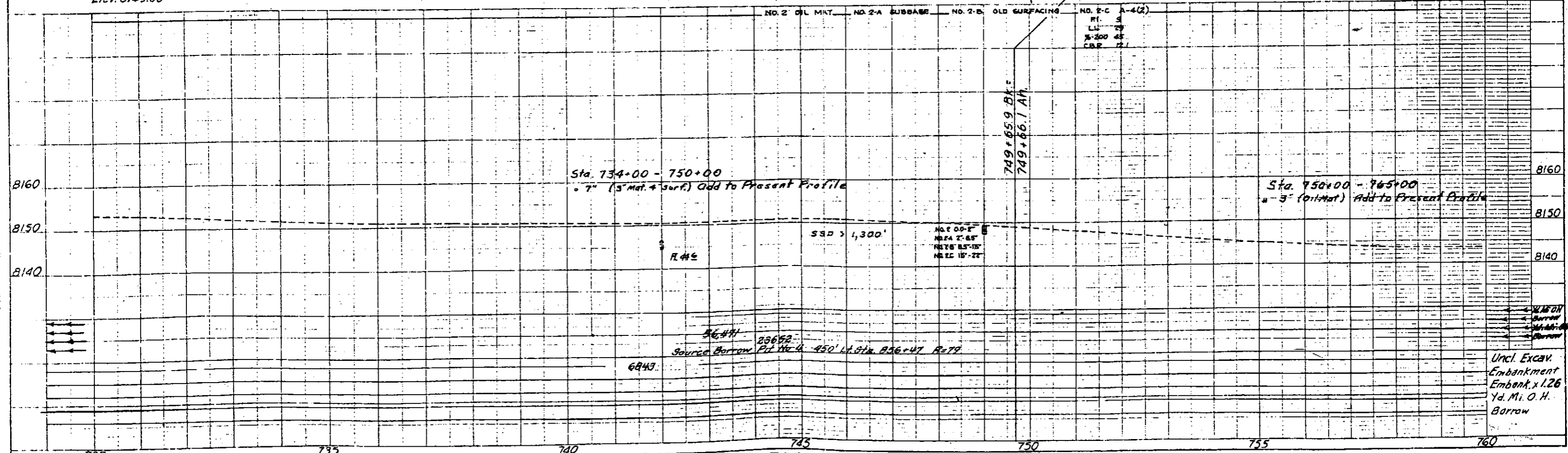
B.M. No. 9
 Power Pole 60' Rt. Sta. 733+50
 Elev. 8149.56

B.M. No. 10
 Power Pole 45' Rt. Sta. 741+00 Trans. 200'
 Elev. 8147.65
 MDS 70 M.P.H.

B.M. No. 11
 Power Pole 30' Lt. Sta. 748+15
 Elev. 8147.38

B.M. No. 12
 U.S.C. & G.S. B.M. # 2-163 (Concrete with Cap) 132' Lt. Sta. 758+00
 Elev. 8144.23 (U.S.C. & G.S. Elev. 8144.27)

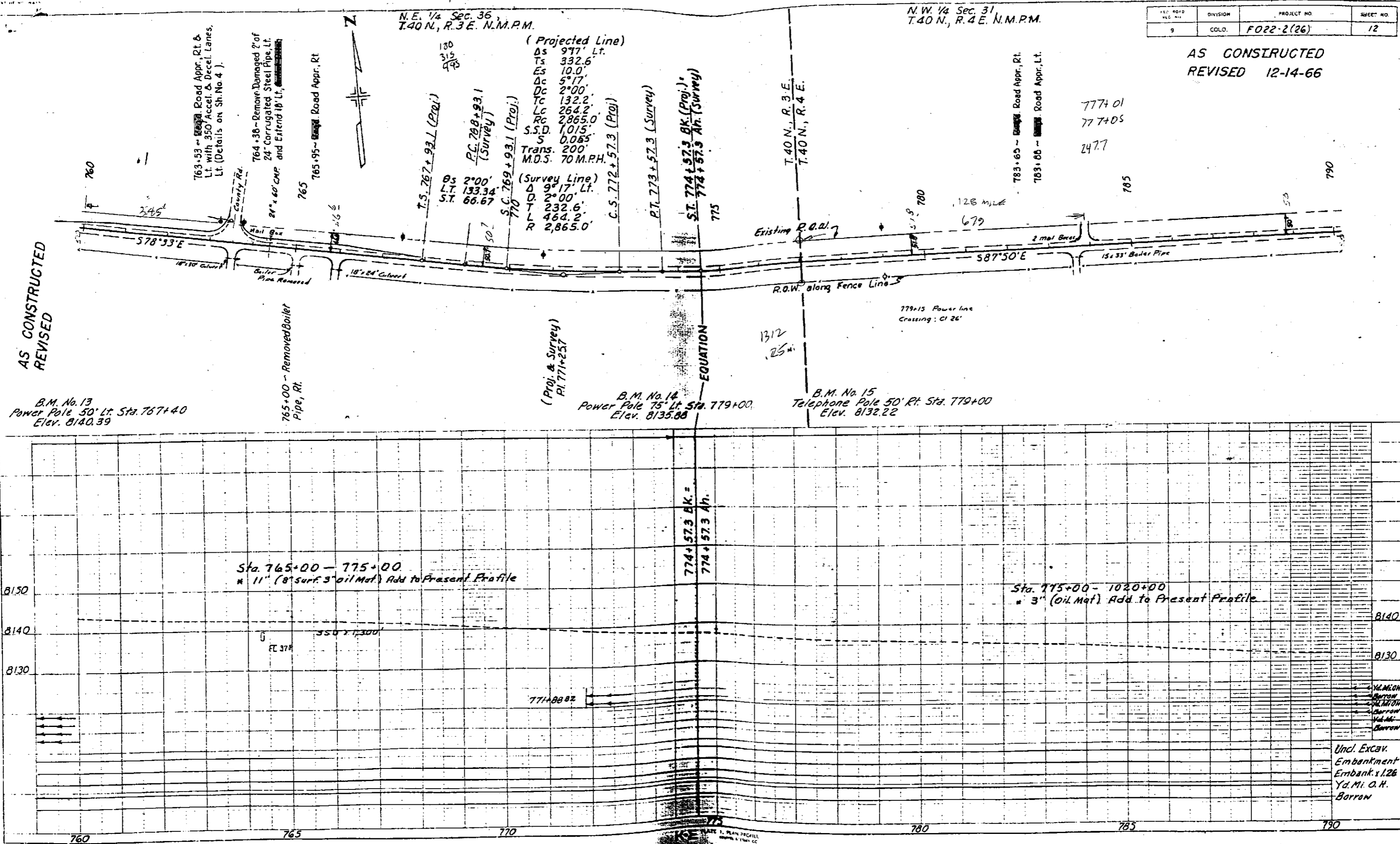
NO. 2 OIL MAT. NO. 2-A SUBBASE NO. 2-B OLD SURFACING NO. 2-C A-4(2)



Uncl. Excav.
 Embankment
 Embank. x 1.26
 Yd. Mi. O.H.
 Borrow

PROJECT NO.	DIVISION	SHEET NO.
FO22-2(26)	COLO.	12

AS CONSTRUCTED
REVISED 12-14-66



AS CONSTRUCTED
REVISED

Und. Excav.
Embankment
Embank. 1.26
Yd. M. O. H.
Borrow

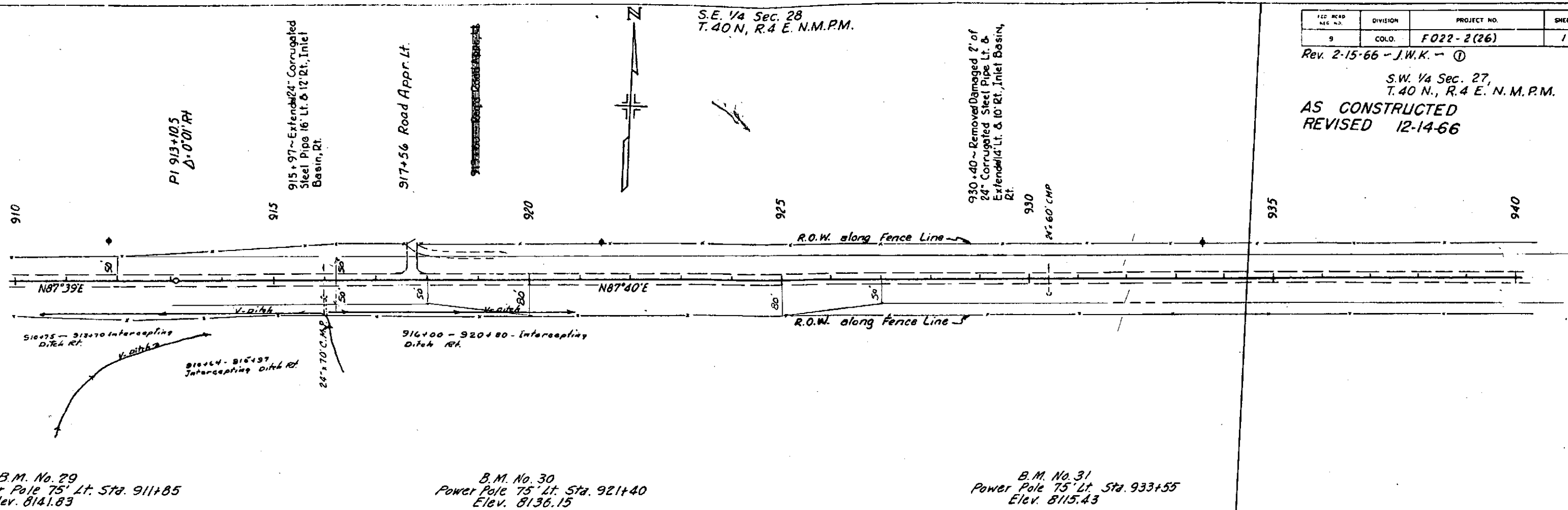
- 1) DIG OUT DAVIS PINS FOR CALIBRATION
- 2) FIND BENCH 2-163
- 3) TIE FOUND ROW MARKER, 5442 PINS IN UTK LODGE DRIVEWAY,
2-163 BENCH
- 4) LOOK FOR ROW MARK AT 50 MPH ADVISORY

S.E. 1/4 Sec. 28
T. 40 N., R. 4 E. N.M.P.M.

FED. ROAD DIST. NO.	DIVISION	PROJECT NO.	SHEET NO.
9	COLO.	F022-2(26)	17

Rev. 2-15-66 - J.W.K. - ①
S.W. 1/4 Sec. 27,
T. 40 N., R. 4 E. N.M.P.M.
AS CONSTRUCTED
REVISED 12-14-66

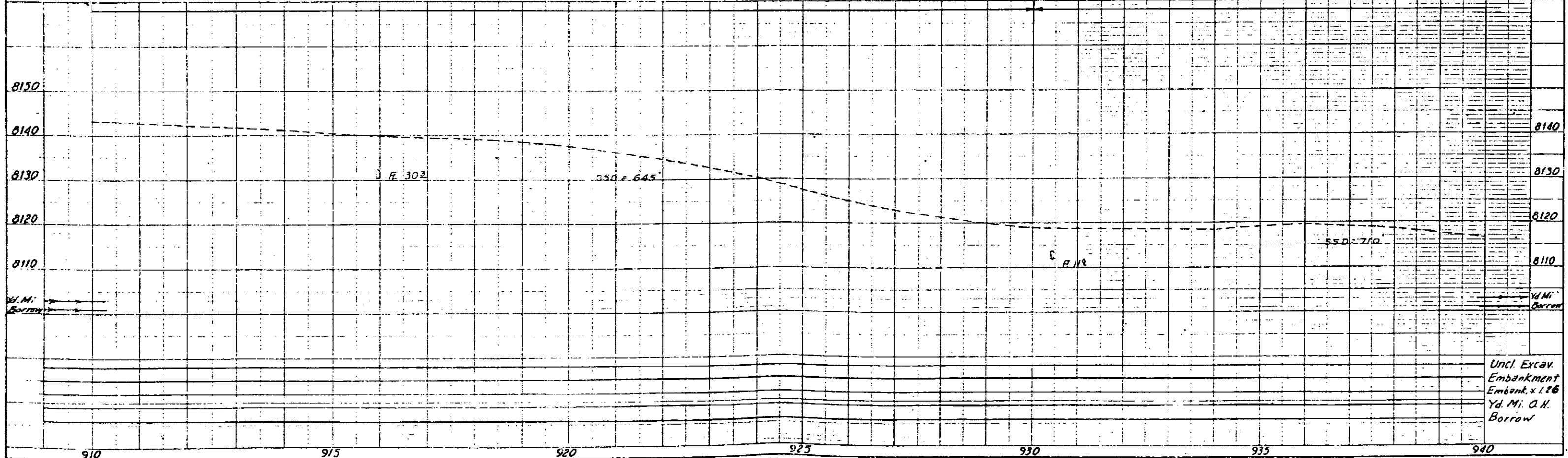
AS CONSTRUCTED
REVISED

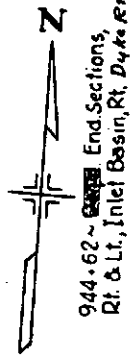


B.M. No. 29
Power Pole 75' Lt. Sta. 911+85
Elev. 8141.83

B.M. No. 30
Power Pole 75' Lt. Sta. 921+40
Elev. 8136.15

B.M. No. 31
Power Pole 75' Lt. Sta. 933+55
Elev. 8115.43





S.W. 1/4 Sec. 27,
T. 40 N., R. 4 E., N.M.P.M.

950 + 37 ~ Extended 30' Corrugated
Steel Pipe 8' Lt., ~~2' 3/4~~ 2' 3/4 x 76'
Cross Culverts, Outlet Ditches,
D.A. = 650 Acres

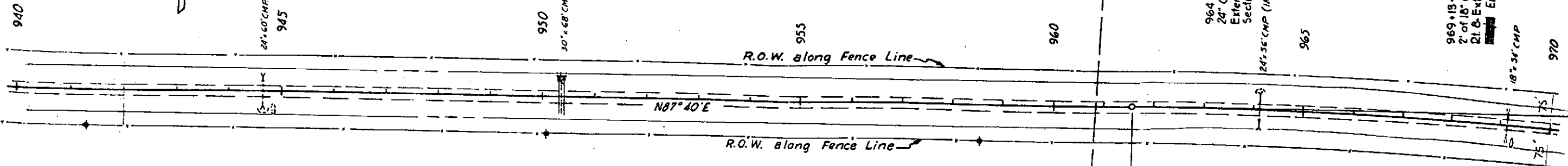
FED. ROAD REG. NO.	DIVISION	PROJECT NO.	SHEET NO.
9	COLO.	F022-2(26)	18

Rev. 2-15-66 - J.W.K.
S.E. 1/4 Sec. 27,
T. 40 N., R. 4 E. N.M.P.M.

**AS CONSTRUCTED
REVISED 12-14-66**

964 + 14 ~ Removed/Damaged 2' of
24" Corrugated Steel Pipe, Lt. &
Extend 10' Rt. & 20' Lt. ~~End~~
Sections, Inlet Basin, 14' Lt. ~~From~~ ~~SHA~~

969 + 15 ~ Removed/Damaged
2' of 18" Corrugated Steel Pipe,
Rt. & Extend 10' Rt. & 14' Lt.
~~End~~ Sections, Ditches
Dyke, etc.



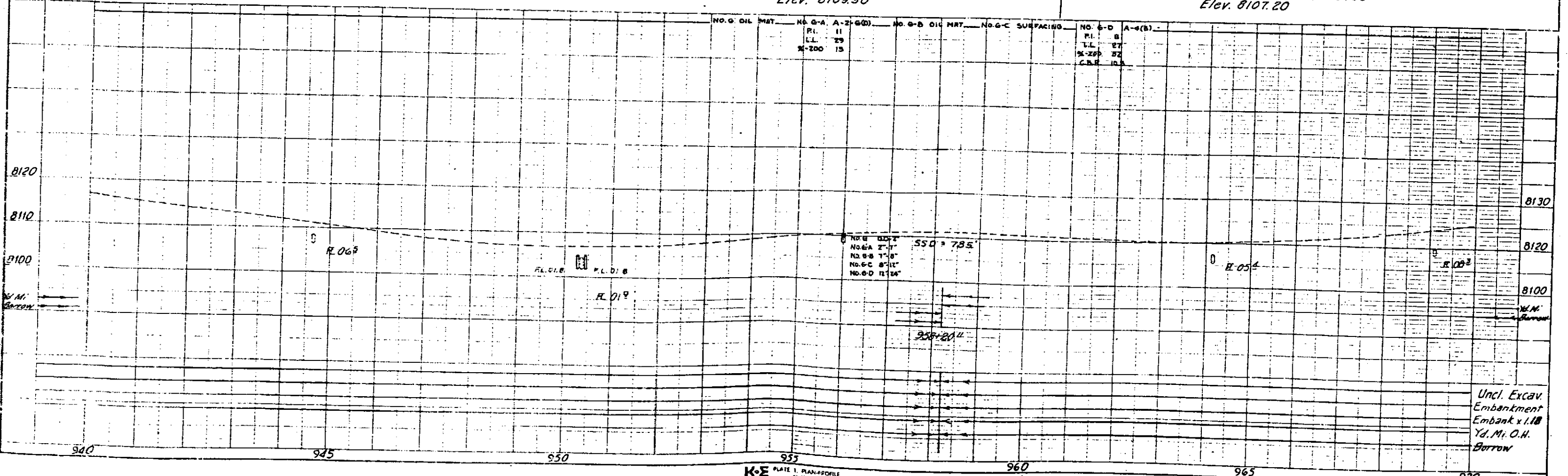
AS CONSTRUCTED
REVISED

B.M. No. 32
Power Pole 75' Lt. Sta. 941+30
Elev. 8113.33

B.M. No. 33
Power Pole 75' Lt. Sta. 950+10
Elev. 8103.20

B.M. No. 34
Power Pole 75' Lt. Sta. 958+55
Elev. 8109.50

B.M. No. 35
on Fence Post 75' Lt. Sta. 968+00
Elev. 8107.20

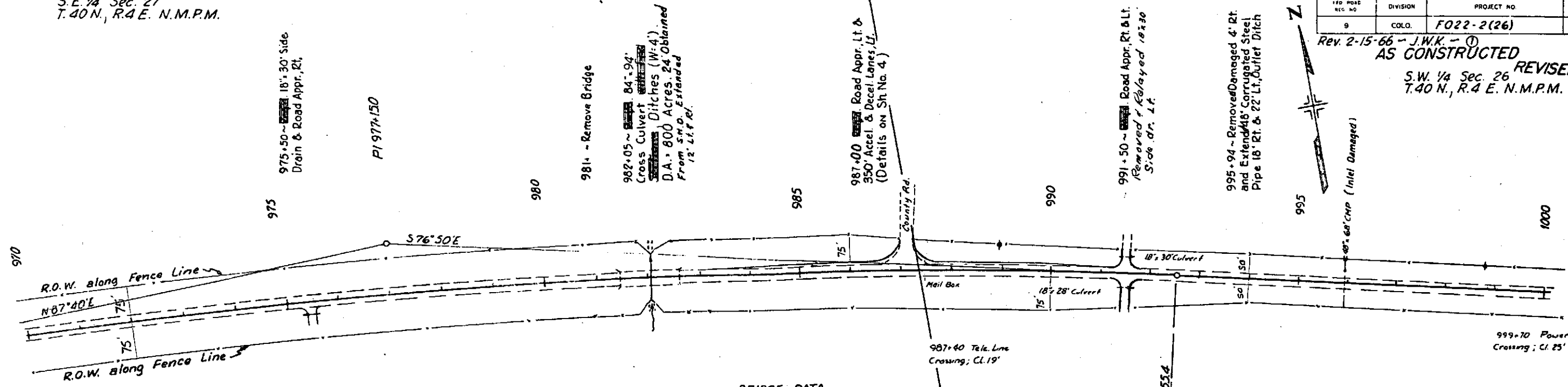


S.E. 1/4 Sec. 27
T.40 N., R.4 E. N.M.P.M.

FED. ROAD DIST. NO.	DIVISION	PROJECT NO.	SHEET NO.
9	COLO.	F022-2(26)	19

Rev. 2-15-66 - J.W.K. - ①
AS CONSTRUCTED
S.W. 1/4 Sec. 26
T.40 N., R.4 E. N.M.P.M. **REVISED 12-14-66**

AS CONSTRUCTED
REVISED

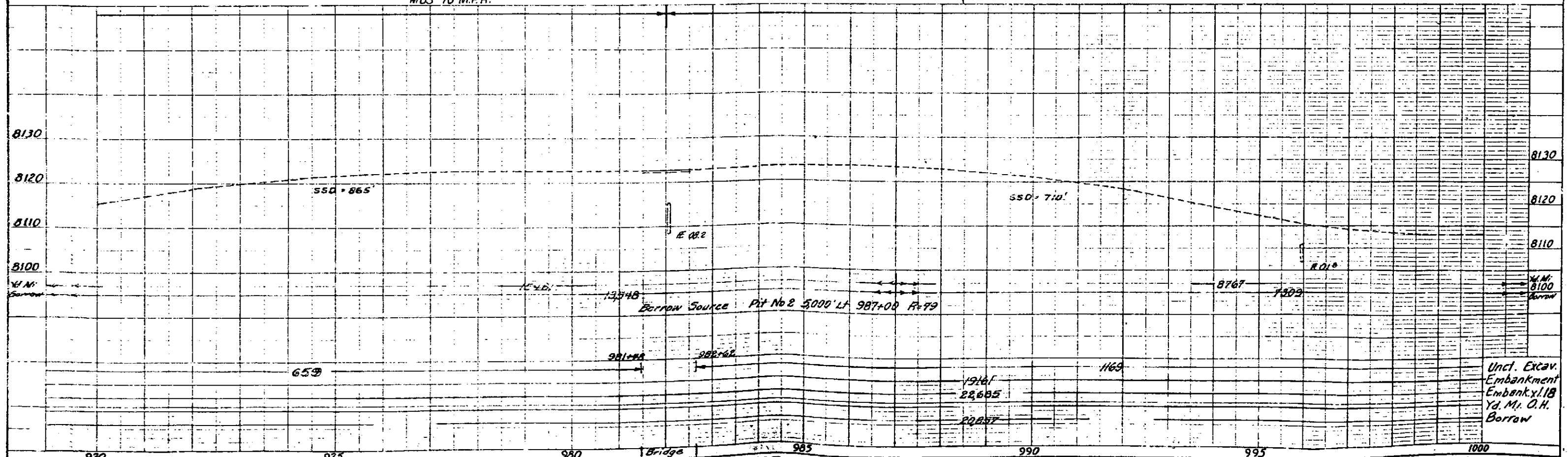


BRIDGE DATA
Structure No. N-10-G
Width - 29'-0"
Loading - HS-20-44

B.M. No. 36
Fence Post 75' Lt. Sta. 979+90
Elev. 8118.78

B.M. No. 37
Power Pole 55' Lt. Sta. 988+95
Elev. 8123.29
SSD > 1,300'
S R.C. Transition 200'
MOS 70 M.P.H.

B.M. No. 38
Power Pole 50' Lt. Sta. 998+95
Elev. 8105.17

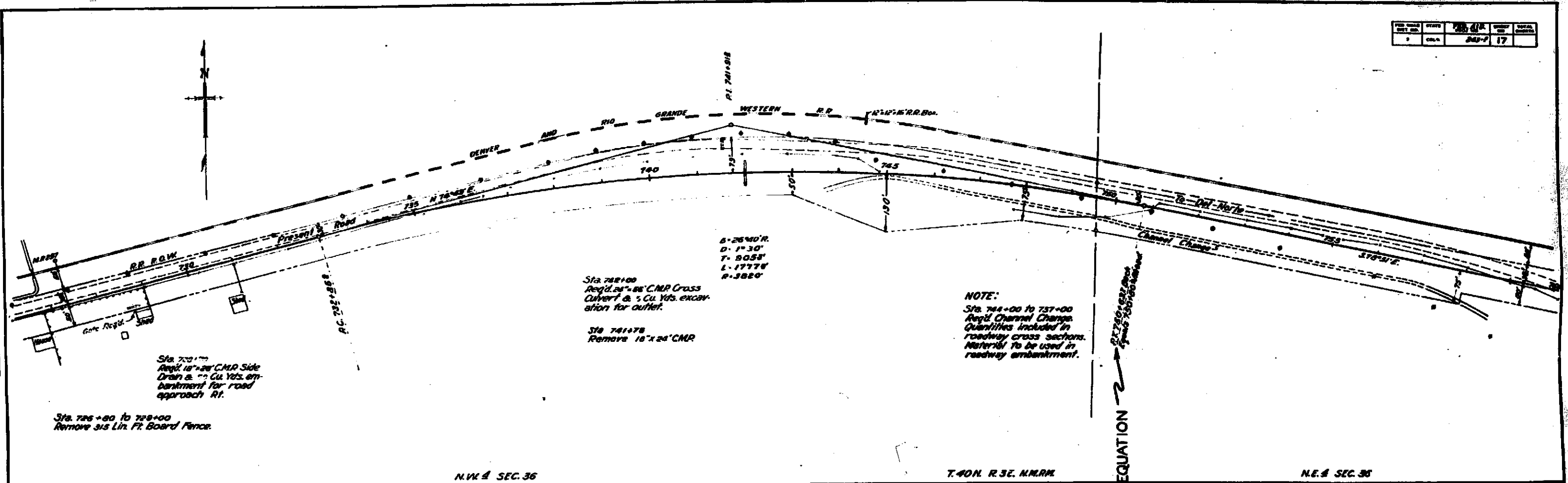


Uncl. Excav.
Embankment
Embank. x 18
Yd. Mj. O.H.
Borrow

DATE	BY	CHKD	APP'D
1917

PLAN	DATE	BY	CHKD	APP'D
...

PROFILE	DATE	BY	CHKD	APP'D
...



6-26'40" R.
D-1'30"
T-8058'
L-17778'
R-3820'

Sta. 742+00
Req'd. 24'-88" C.M.P. Cross
Convert & 5 Cu. Yds. excavation for outlet.

Sta. 741+78
Remove 16" x 24" C.M.P.

NOTE:
Sta. 744+00 to 757+00
Req'd. Channel Change.
Quantities included in
roadway cross sections.
Material to be used in
roadway embankment.

Sta. 727+00
Req'd. 18" x 24" C.M.P. Side
Drain & 7 Cu. Yds. embankment for road approach Rt.

Sta. 726+80 to 728+00
Remove 315 Lin. Ft. Board Fence.

N.W. 4 SEC. 36

T. 40N. R. 3E. N.M.P.M.

N.E. 4 SEC. 36

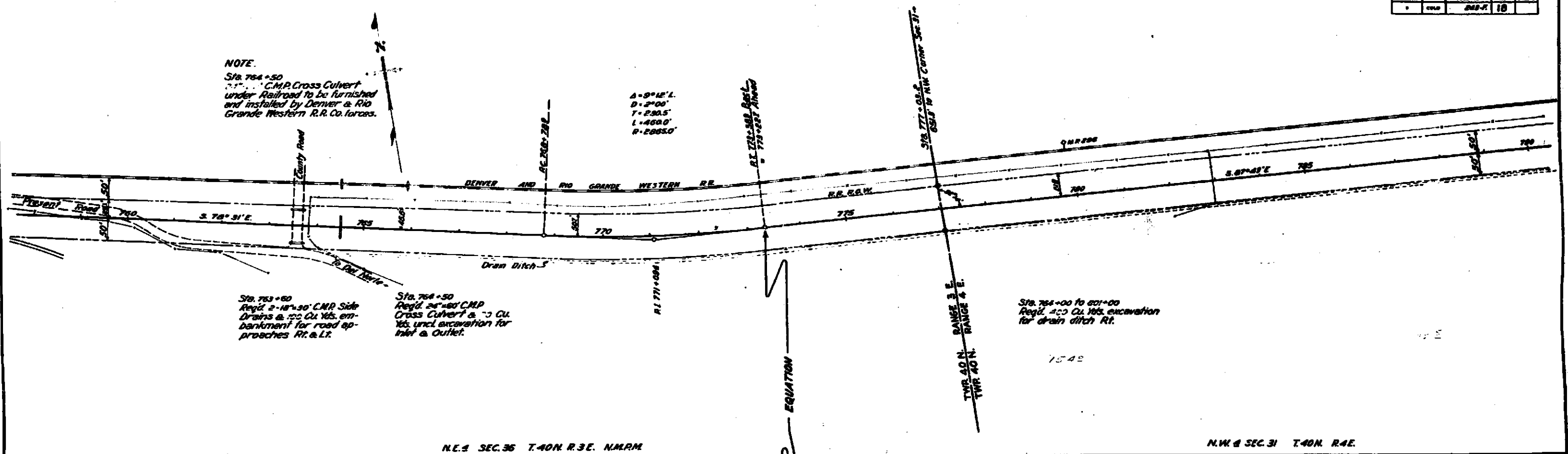


EXCAV. EMBANK. BORROW
Sta. 727+00 to 728+00
Sta. 730+00 to 731+00
Sta. 732+00 to 733+00
Sta. 734+00 to 735+00
Sta. 736+00 to 737+00
Sta. 738+00 to 739+00
Sta. 740+00 to 741+00
Sta. 742+00 to 743+00
Sta. 744+00 to 745+00
Sta. 746+00 to 747+00
Sta. 748+00 to 749+00
Sta. 750+00 to 751+00

JOB NO.	DATE	BY	CHECKED	TOTAL
1	1918	J.M.F.	18	

NOTE.
Sta. 764+50
C.M.P. Cross Culvert
under Railroad to be furnished
and installed by Denver & Rio
Grande Western R.R. Co. forces.

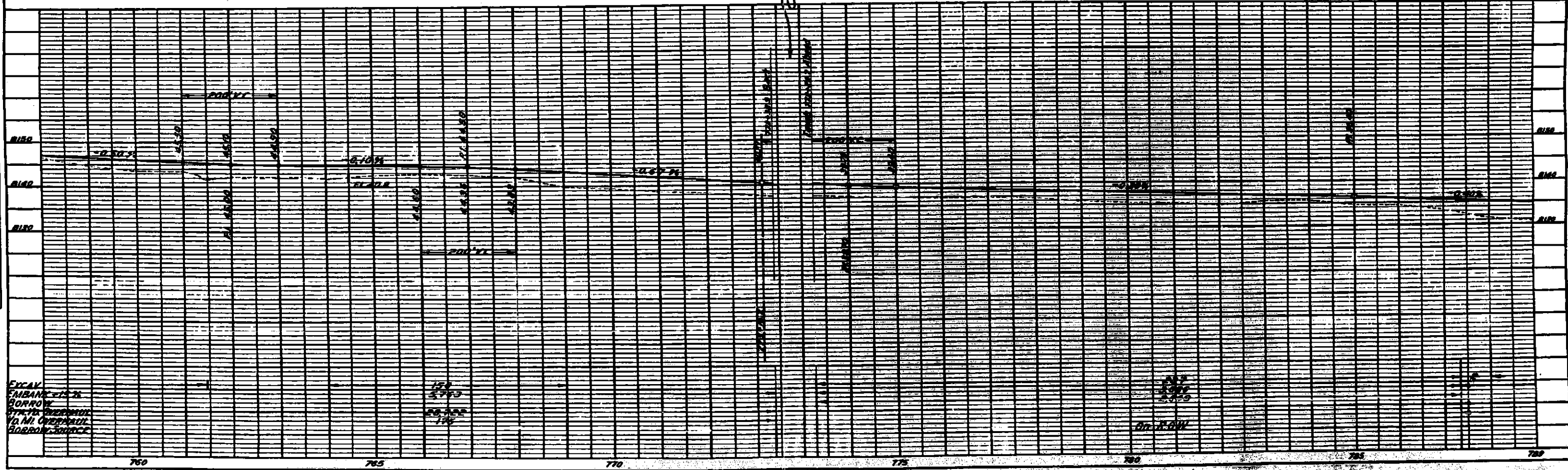
A=9°12' L.
D=2'00"
T=280.5'
L=488.0'
R=2885.0'



Sta. 763+00
Reqd. 2-18x30' C.M.P. Side
Drains @ 100 Cu Yds. em-
bankment for road ap-
proaches Rt. & Lt.

Sta. 764+50
Reqd. 28x40' C.M.P.
Cross Culvert @ 100 Cu
Yds. uncl. excavation for
Inlet & Outlet.

Sta. 764+00 to 801+00
Reqd. 400 Cu Yds. excavation
for drain ditch Rt.



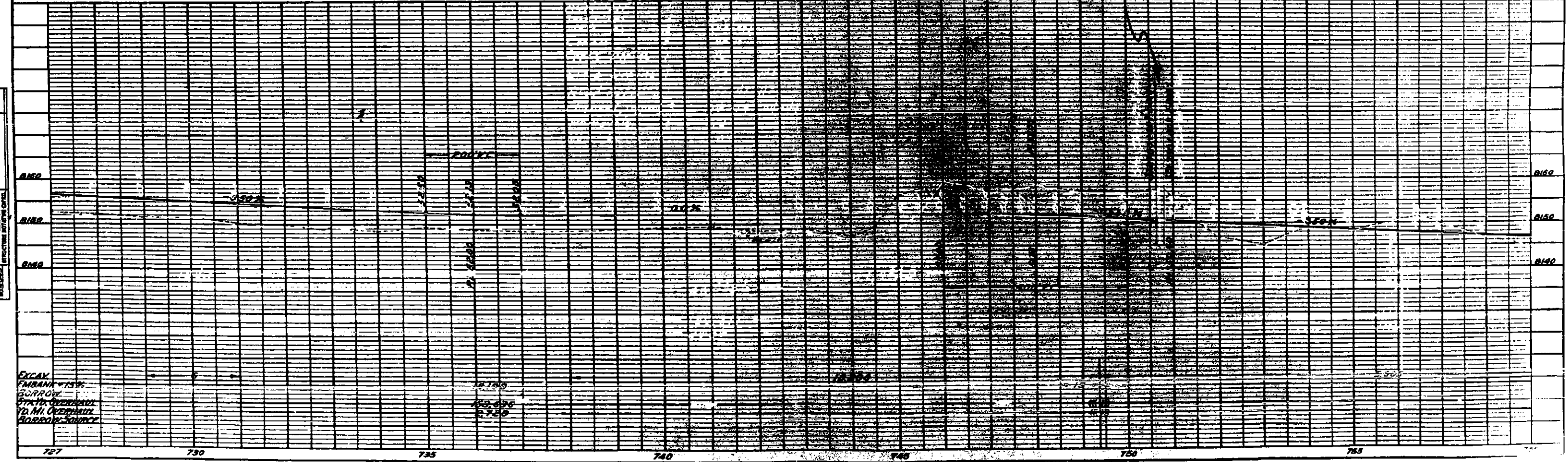
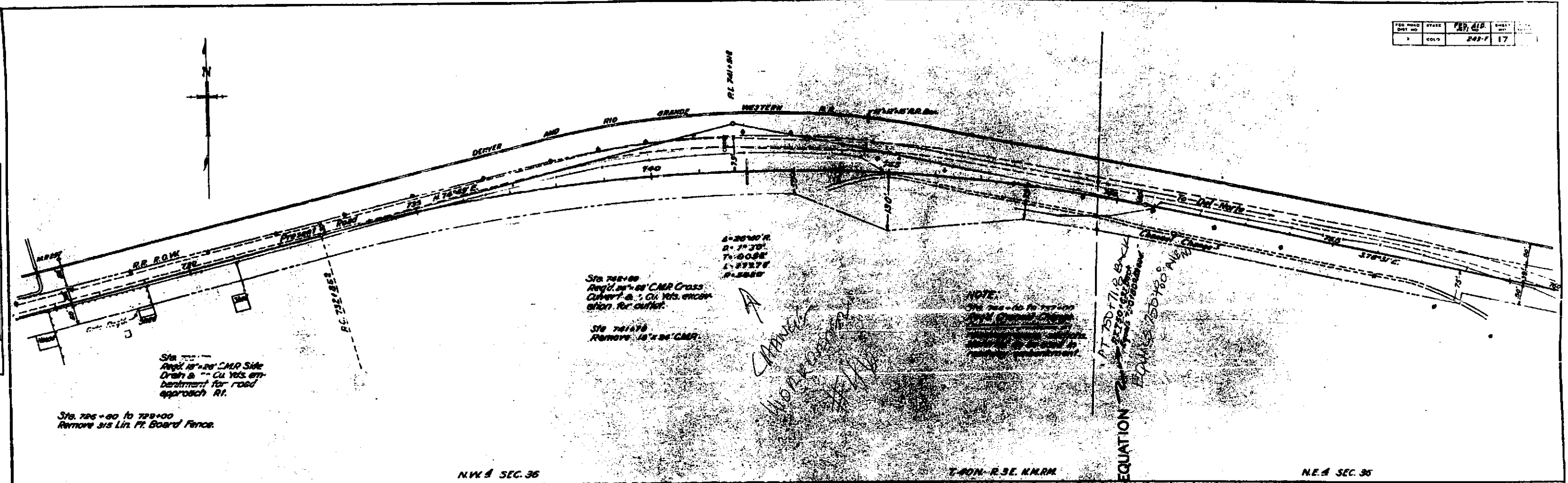
PLAN	DATE	BY	CHECKED	TOTAL
1	1918	J.M.F.	18	

PROFILE	DATE	BY	CHECKED	TOTAL
1	1918	J.M.F.	18	

PROJ. NO.	STATE	FILE NO.	SHEET NO.
2	COLO.	243F	17

PLAN	DATE
REVISION	
BY	
CHECKED	
APPROVED	

PROFILE	DATE
REVISION	
BY	
CHECKED	
APPROVED	



EXCAV.
 FURBER & SONS
 GURROVE
 574 N. OVERHILL
 DENVER, COLORADO