

TITLE SHEET

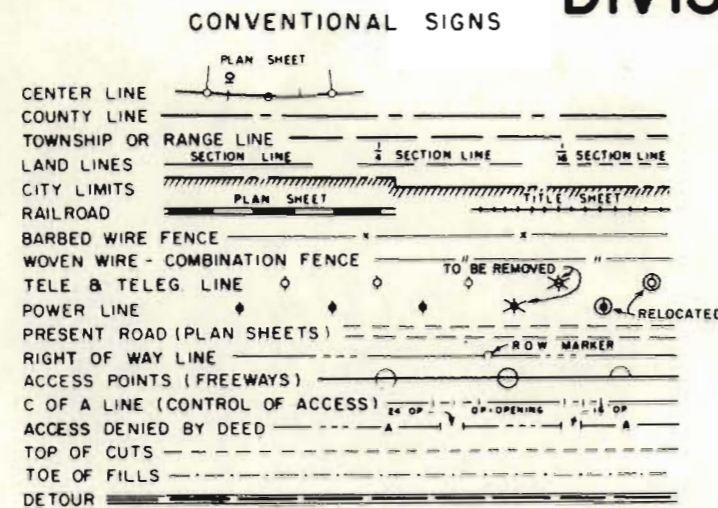
# STATE DEPARTMENT OF HIGHWAYS DIVISION OF HIGHWAYS—STATE OF COLORADO

FEDERAL ROAD DISTRICT NO.	DIVISION	PROJECT NO.	SHEET NO.
VIII	COLORADO	F 050-5 (5)	1

RIGHT OF WAY  
LAS ANIMAS - NORTH

INDEX OF SHEETS

REVISIONS	



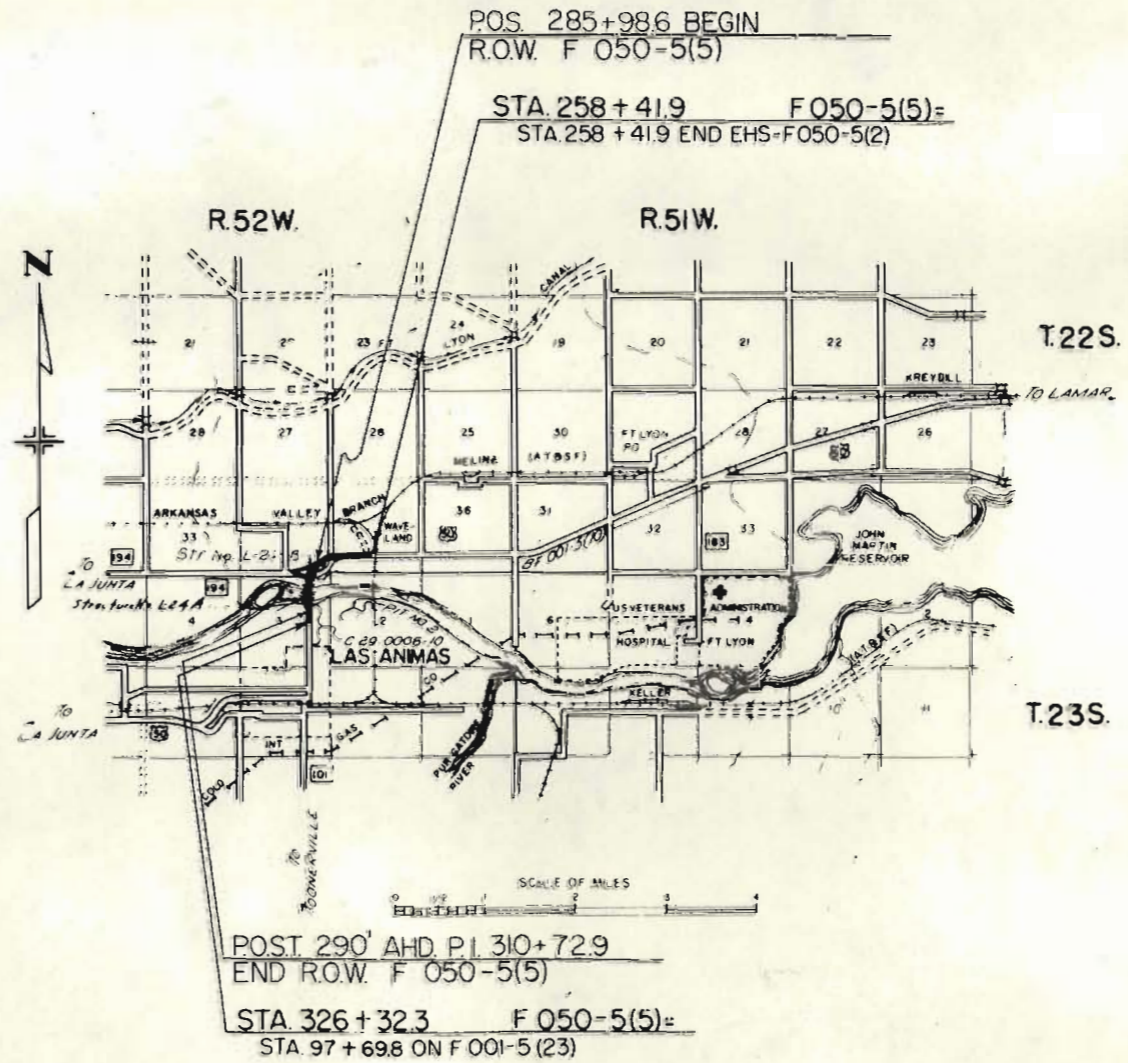
PLAN AND PROFILE OF PROPOSED  
**FEDERAL AID PROJECT NO. F 050-5 (5)**  
STATE HIGHWAY NO. 50  $\beta$   
BENT COUNTY  
RIGHT OF WAY

SHEET NO  
1  
2  
3-5

TITLE SHEET  
TABULATION OF PROPERTIES SHEETS  
LINE SHEETS

SCALE OF ORIGINAL DRAWINGS  
PLAN SHEETS 1" = 50'

R.O.W. LENGTH OF PROJECT = 2,764'FY. = 0.063 Miles



FILE COPY  
DO NOT REMOVE

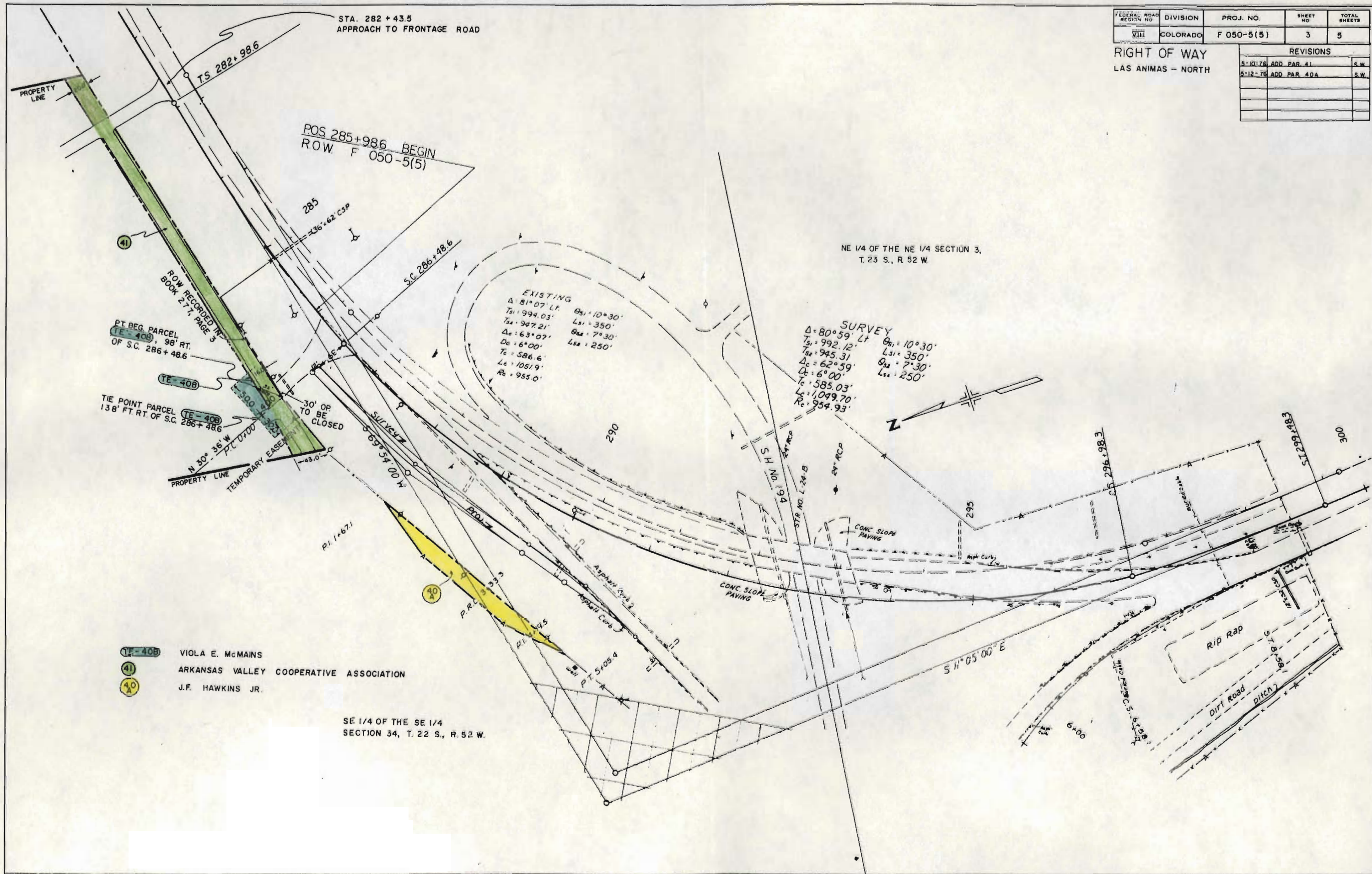




FEDERAL ROAD REGION NO.	DIVISION	PROJ. NO.	SHEET NO.	TOTAL SHEETS
VIII	COLORADO	F 050-5(5)	3	5

REVISIONS		
2-10-78	ADD PAR. 41	S.W.
5-12-78	ADD PAR. 40A	S.W.

RIGHT OF WAY  
LAS ANIMAS - NORTH

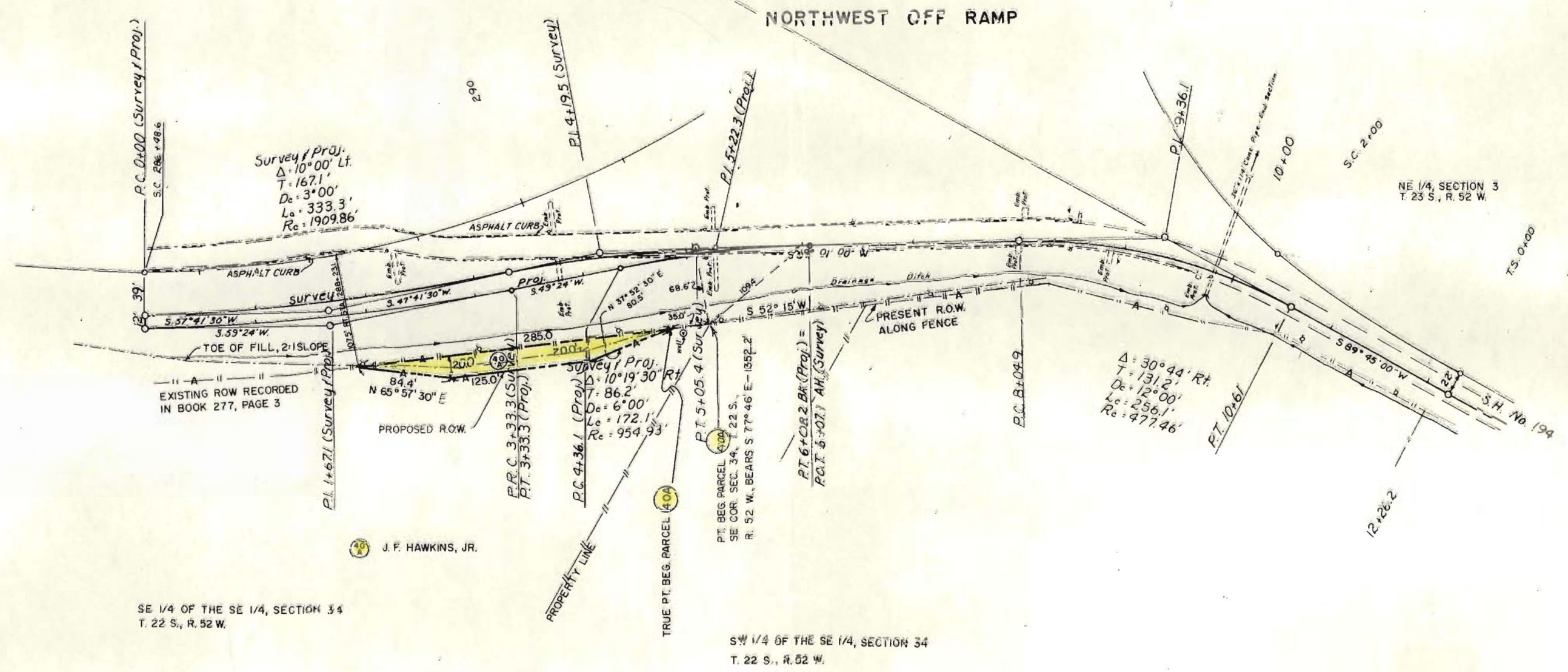


- TE-40B VIOLA E. McMains
- 41 ARKANSAS VALLEY COOPERATIVE ASSOCIATION
- 40A J.F. HAWKINS JR.

FEDERAL ROAD REGION NO.	DIVISION	PROJ. NO.	SHEET NO.	TOTAL SHEETS
VIII	COLORADO	F 050-5(5)	4	5

RIGHT OF WAY  
 LAS ANIMAS - NORTH

REVISION	



J. F. HAWKINS, JR.

FEDERAL ROAD DIST. NO.	DIVISION	PROJ. NO.	SHEET NO.	TOTAL SHEETS
VIII	COLORADO	F 050-5(5)	5	5

RIGHT OF WAY LAS ANIMAS - NORTH	
REVISIONS	

THE CITY OF LAS ANIMAS,  
 BENT COUNTY, COLORADO,  
 A MUNICIPAL CORPORATION

LOT 1, SEC. 3, T. 23 S., R. 52 W.

