



COLORADO
Department of
Transportation

DOCUMENT SEPARATOR SHEET

REGION 5 – JUNE 2017 CONVERSION

To be placed at the beginning of each separator sheet.



r500000933

Description:

ROW Plans 24X36

Route # and Mile Points:

SH 62

Originating Office:

ROW/Survey

File Name:

F-103(13)_ROW(.PDF)

Box Location:

19 (TUBE-15)of 38

F-103(13)

T. 45 N. R. 8 W.

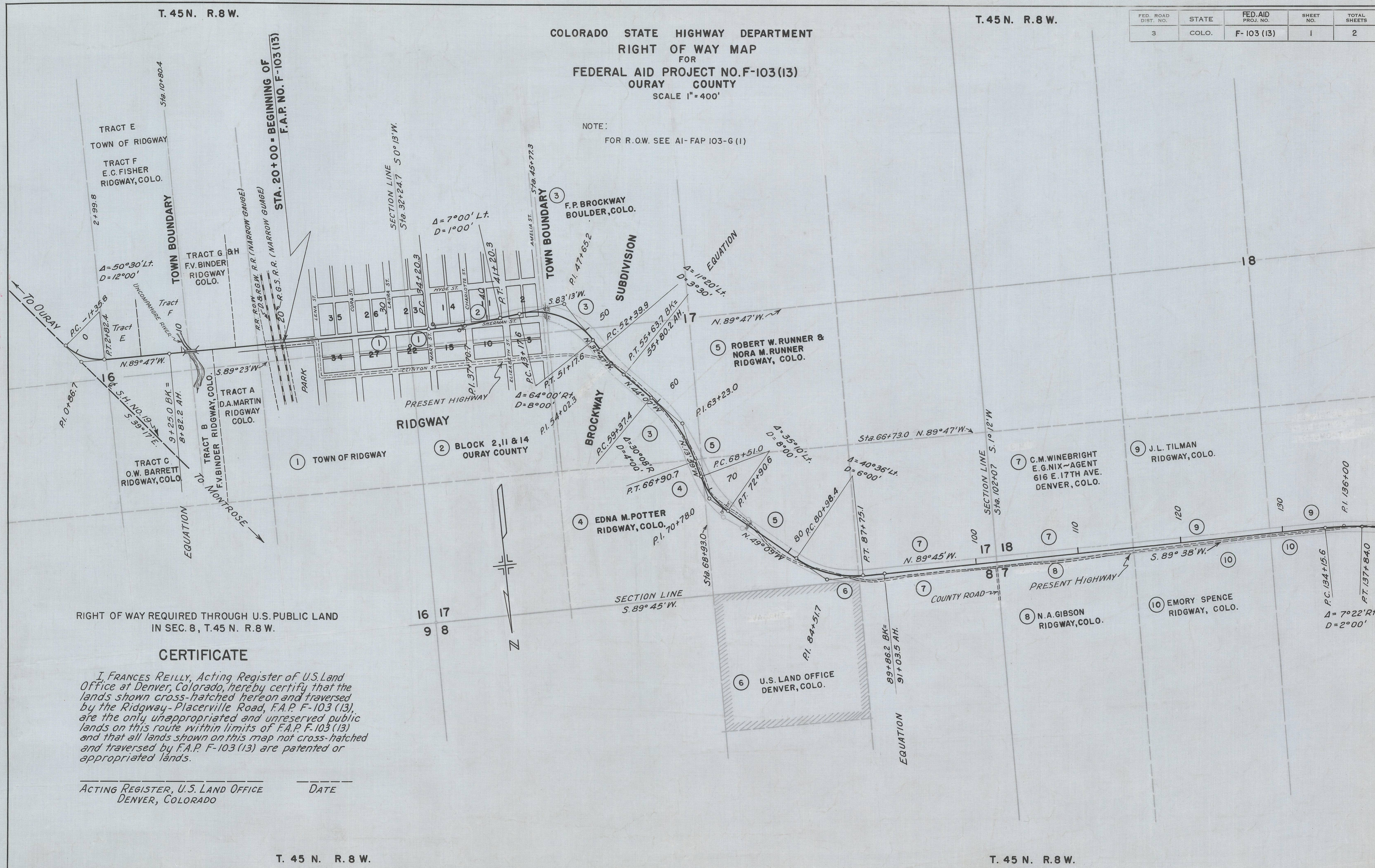
T. 45 N. R. 8 W.

FED. ROAD DIST. NO.	STATE	FED. AID PROJ. NO.	SHEET NO.	TOTAL SHEETS
3	COLO.	F-103 (13)	1	2

COLORADO STATE HIGHWAY DEPARTMENT
 RIGHT OF WAY MAP
 FOR
 FEDERAL AID PROJECT NO. F-103 (13)
 OURAY COUNTY
 SCALE 1" = 400'

NOTE:
 FOR R.O.W. SEE AI-FAP 103-G (1)

MICROFILMED



RIGHT OF WAY REQUIRED THROUGH U.S. PUBLIC LAND
 IN SEC. 8, T. 45 N. R. 8 W.

CERTIFICATE

I, FRANCES REILLY, Acting Register of U.S. Land Office at Denver, Colorado, hereby certify that the lands shown cross-hatched hereon and traversed by the Ridgway-Placerville Road, F.A.P. F-103 (13), are the only unappropriated and unreserved public lands on this route within limits of F.A.P. F-103 (13) and that all lands shown on this map not cross-hatched and traversed by F.A.P. F-103 (13) are patented or appropriated lands.

ACTING REGISTER, U.S. LAND OFFICE
 DENVER, COLORADO

DATE

T. 45 N. R. 8 W.

T. 45 N. R. 8 W.

RIGHT OF WAY REQUIRED THROUGH U.S. PUBLIC LAND
IN SEC. 8, T.45 N. R.8 W.

CERTIFICATE

I, FRANCES REILLY, Acting Register of U.S. Land Office at Denver, Colorado, hereby certify that the lands shown cross-hatched hereon and traversed by the Ridgway to Placerville Road, F.A.P. F-103 (13), are the only unappropriated and unreserved public lands on this route within limits of F.A.P. F-103 (13) and that all lands shown on this map not cross-hatched and traversed by F.A.P. F-103 (13) are patented or appropriated lands.

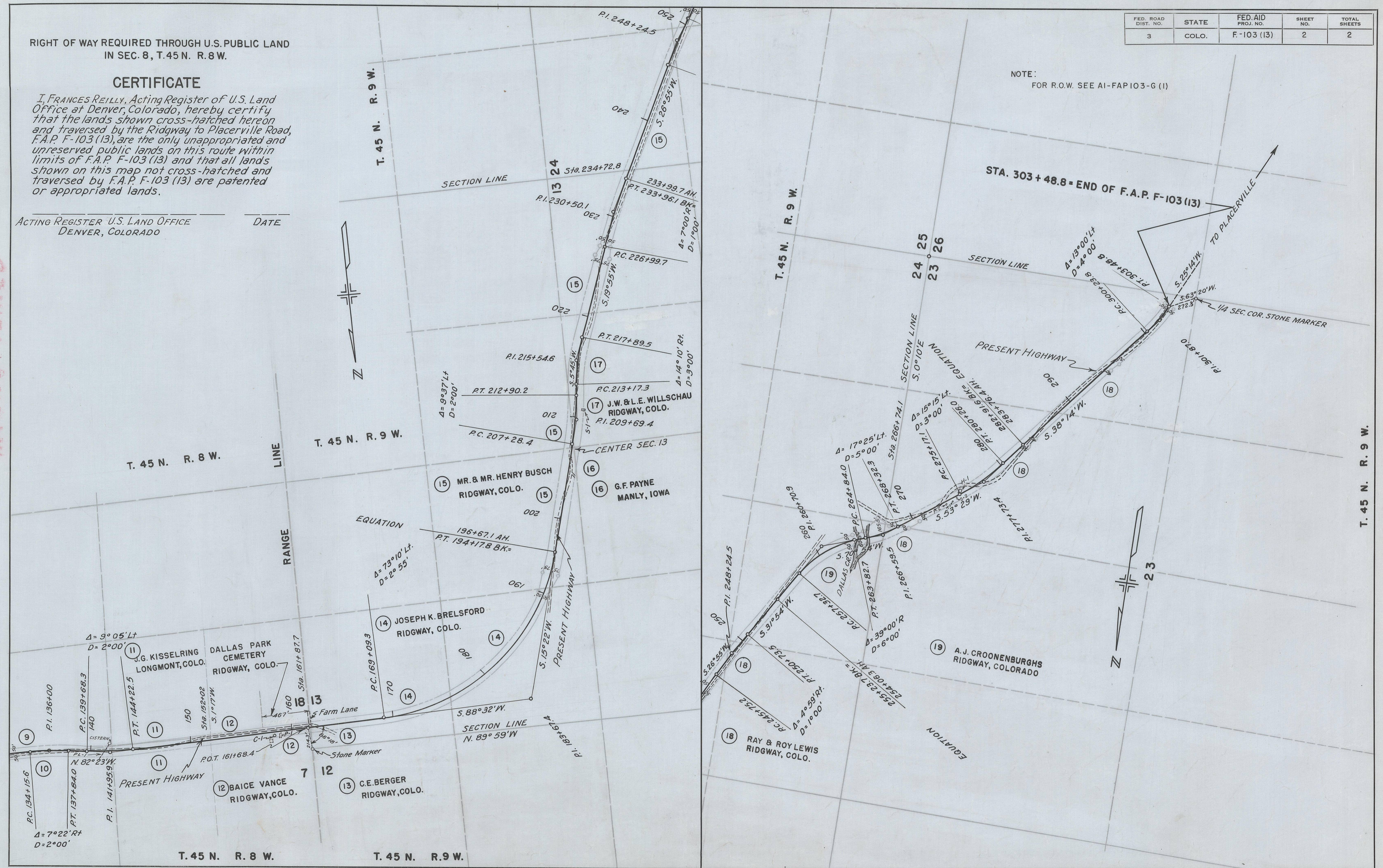
ACTING REGISTER U.S. LAND OFFICE
DENVER, COLORADO

DATE

MICROFILMED

FED. ROAD DIST. NO.	STATE	FED. AID PROJ. NO.	SHEET NO.	TOTAL SHEETS
3	COLO.	F-103 (13)	2	2

NOTE:
FOR R.O.W. SEE AI-FAP103-G (1)



T. 45 N. R. 8 W.

T. 45 N. R. 9 W.

T. 45 N. R. 9 W.

T. 45 N. R. 9 W.

T. 45 N. R. 8 W.

T. 45 N. R. 9 W.