

R.O.W. TABULATION OF PROPERTIES IN LAS ANIMAS

COUNTY S.H.No. 160 PROJ. F 160-4(1)

FEDERAL ROAD DIVISION NO.	DISTRICT	PROJECT NO.	SHEET NO.
9	COLORADO	F 160-4(1)	2

RIGHT OF WAY TRINIDAD EAST CITY LIMITS - EAST

PARCEL NO.	OWNER	ADDRESS	LOCATION	AREA IN SQ. FT.			PURCHASE DATA					REMARKS	NO.	
				PARCEL	TO BE ACQUIRED	REMAINDER	LAND	IMPROV'M'TS	DAMAGE	MISC.	TOTAL			
			T. 33 S., R. 63 W., 6 th P.M.											
			SECTION 18 SAN RAFAEL HEIGHTS ADD. TO THE CITY OF TRINIDAD											
PE-1	LOREN J. ARCHULETTA and MARIA ARCHULETTA		LOTS 10 and 11, BLOCK 11		1,000								CONSTRUCT and MAINTAIN DRAINAGE DITCH	
PE-2	FEDYD ZAMORA		LOT 9, BLOCK 11		500								CONSTRUCT and MAINTAIN DRAINAGE DITCH	
PE-3	ALEX ECCHER and MARGARET ECCHER		LOTS 34, 35 and 36 BLOCK 9		7,500								CONSTRUCT and MAINTAIN DRAINAGE DITCH	
PE-4	ALEX ECCHER and MARGARET ECCHER		LOT 37, BLOCK 9		1,250								CONSTRUCT and MAINTAIN DRAINAGE DITCH	
			SECTION 18 BESHOAR'S INSIDE ADD. TO THE CITY OF TRINIDAD											
PE-5	ROBERT H. SMITH		LOTS 2 and 3, BLOCK 2		3,300								CONSTRUCT and MAINTAIN DRAINAGE DITCH	
PE-6	LAS ANIMAS COUNTY		LOT 1, BLOCK 2		1,875								CONSTRUCT and MAINTAIN DRAINAGE DITCH	
PE-7	A. E. M. BESHQAR HER HEIRS OR ASSIGNS		LOT 18, BLOCK 2		990								CONSTRUCT and MAINTAIN DRAINAGE DITCH	
			SECTION 7											
PE-8	JOHN SAWAYA		SE 1/4 SE 1/4		2,031								CONSTRUCT and MAINTAIN DRAINAGE DITCH	
PE-8-A	CITY OF TRINIDAD A MUNICIPAL CORPORATION		SE 1/4 SE 1/4		1,075								CONSTRUCT and MAINTAIN DRAINAGE DITCH	
			SECTION 18 BESHOAR'S INSIDE ADD. TO THE CITY OF TRINIDAD											
PE-9	FRANK J. MODICA		LOTS 1, 2, 3, 4 and 5 BLOCK D		6,170								CONSTRUCT and MAINTAIN DRAINAGE DITCH	

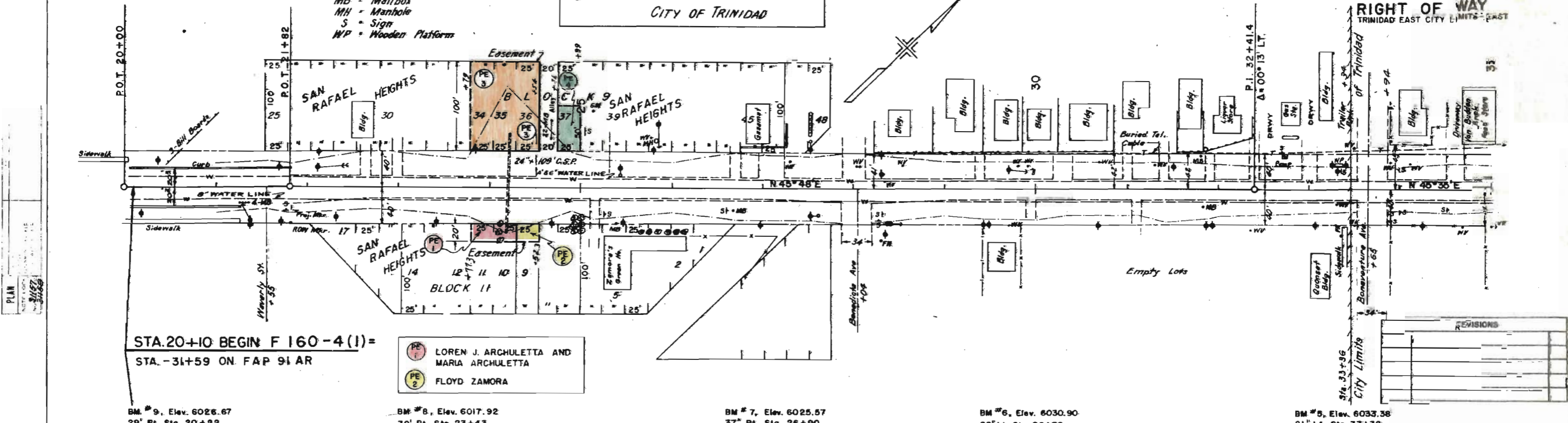
REVISIONS	

- LEGEND**
 GM = Gas Meter
 WV = Water Valve
 FH = Fire Hydrant
 MB = Mailbox
 MH = Manhole
 S = Sign
 WP = Wooden Platform

NE 1/4 Sec. 18
 T.33S., R.63W.

PE 3 PE 4
 ALEX. ECCHER AND MARGARET ECCHER
 CITY OF TRINIDAD

F-160-4 (1) 3
 ORIGINAL SCALE: 1" = 50'
 RIGHT OF WAY
 TRINIDAD EAST CITY LIMITS EAST



STA. 20+10 BEGIN F 160-4 (1) =
 STA. -31+59 ON FAP 91 AR

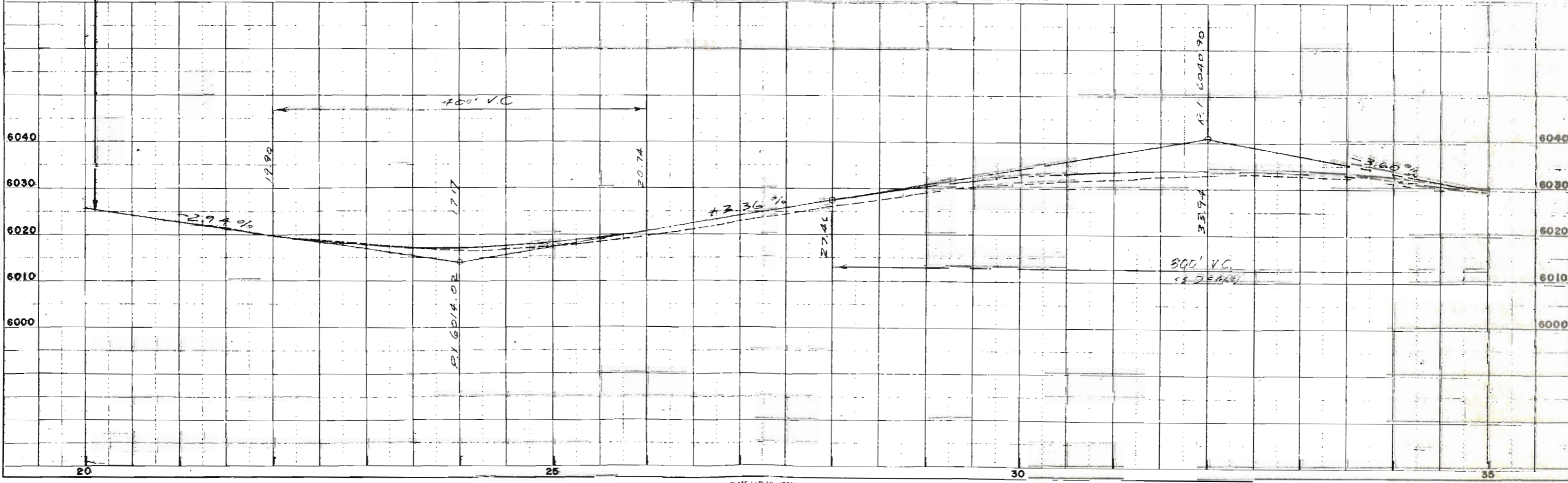
- PE 1 LOREN J. ARCHULETTA AND MARIA ARCHULETTA
 PE 2 FLOYD ZAMORA

BM #9, Elev. 6026.67 29' Rt. Sta. 20+22
 BM #8, Elev. 6017.92 39' Rt. Sta. 23+43
 BM #7, Elev. 6025.57 37' Rt. Sta. 26+90
 BM #6, Elev. 6030.90 22' Lt. Sta. 29+72
 BM #5, Elev. 6033.38 21' Lt. Sta. 33+32

REVISIONS

NO.	DATE	DESCRIPTION

PROFILE
 NO. 160-4 (1)
 DATE: 11/11/10
 DRAWN BY: [Signature]



ROBERT H. SMITH
 LAS ANIMAS COUNTY
 A. E. M. BISHOAR, HER HEIRS OR ASSIGNS

JOHN SAWAYA
 CITY OF TRINIDAD, A MUNICIPAL CORPORATION

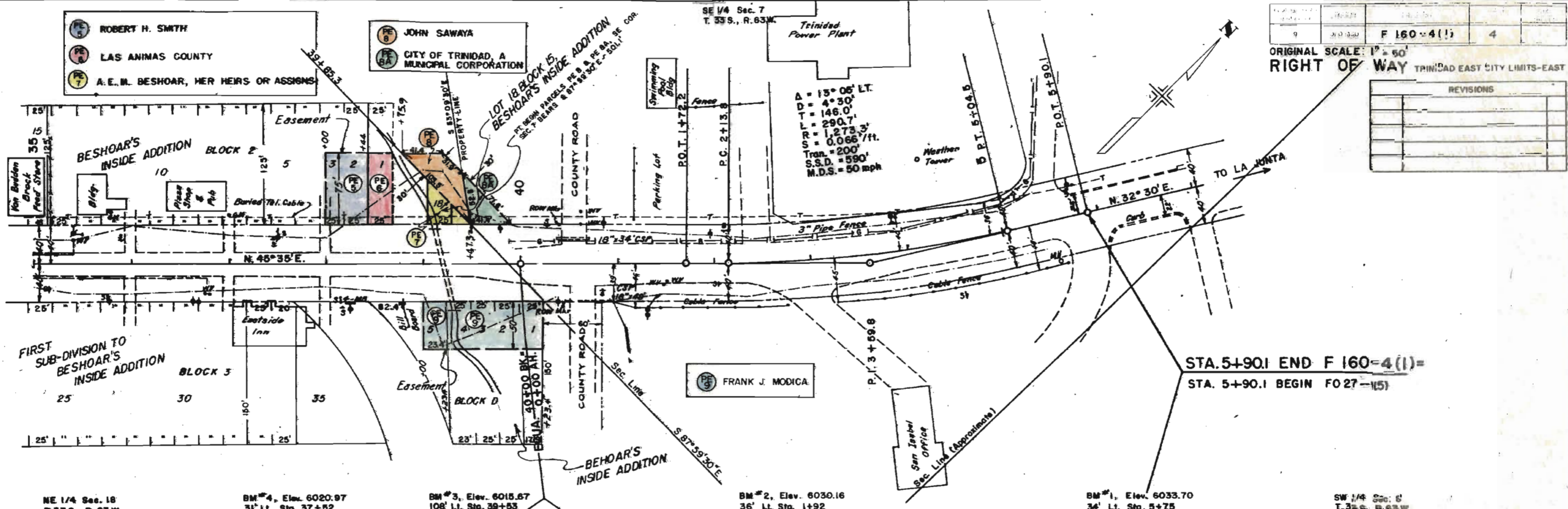
SE 1/4 Sec. 7
 T. 33 S., R. 63 W.

ORIGINAL SCALE: 1" = 50'
 RIGHT OF WAY TRINIDAD EAST CITY LIMITS-EAST

REVISIONS	

DATE	BY	REVISION

DATE	BY	REVISION



NE 1/4 Sec. 16 T. 33 S., R. 63 W. BM #4, Elev. 6020.97 31' Lt. Sta. 37+52 BM #3, Elev. 6015.67 108' Lt. Sta. 39+53 BM #2, Elev. 6030.16 36' Lt. Sta. 1+92 BM #1, Elev. 6033.70 34' Lt. Sta. 5+75 SW 1/4 Sec. 6 T. 33 S., R. 63 W.

