

STA. 5+50 END TYPICAL SECTION No. 1
 BEG. TYPICAL SECTION No. 2

STA. 17+00 END TYPICAL SECTION No. 2
 BEG. TRANSITION

$\Delta 123.456$
 D. 6'00"
 T. 1662.4
 L. 2004.2
 R. 955.0

PT Equ. 20104.2 BK
 24183.7 AN

Test	00-01	Test	01-30	Test	00-02
	Oil		A-0(m)		Oil
	Mat		U-354		Mat

F23-1(I)	F22-1(I)
SHEET NO.	
1	2
3	4-5
6	7
8	9-10
11-12	13
14	15
16	17
18	19
20	21
22	23
24	25
26	27
28	29
30	31
32	33
34	35
36	37
38	39
40	41
42	43
44	45
46	47
48	49
50	51
52	53
54	55
56	57
58	59
60	61
62	63
64	65
66	67
68	69
70	71
72	73
74	75
76	77
78	79
80	81
82	83
84	85
86	87
88	89
90	91
92	93
94	95
96	97
98	99
100	101

INDEX OF SHEETS

1	TITLE SHEET & SKETCH MAP.	
2	TYPICAL SECTION, SUMMARY OF APPROXIMATE QUANTITIES, DETAILS OF COMBINATION CURB & GUTTER, GUTTER, SIDEWALK, AND CURB & GUTTER AT INTERSECTION, BALLAST MATERIAL PLAN.	
3	TABULATION OF LENGTH & DESIGN DATA, AND COMBINATION CURB & GUTTER TABULATION AND SURFACING MATERIAL PLAN, DETAILS OF CURB & SIDEWALK	
4-5	LIST OF STRUCTURES.	
6	STANDARD MARKERS POSTS.	
7	STANDARD NO. 12 AND NO. 13 CONCRETE INLETS.	M-7-B
8	STANDARD ROADWAY CONSTRUCTION TRAFFIC SIGNS.	M-12-C-13
9-10	PLAN & PROFILE SHEETS.	M-2-D
11-12	CROSS SECTION SHEETS.	
13	EARTHWORK TOTALS.	
14	STANDARD METHODS FOR SUPERELEVATION & WIDENING OF CURVES.	M-1-B
15	TYPICAL SIDE APPROACH ROADS, FLARING, CUT SLOPE TREATMENT AND WIDENING AT BRIDGES.	M-2-C

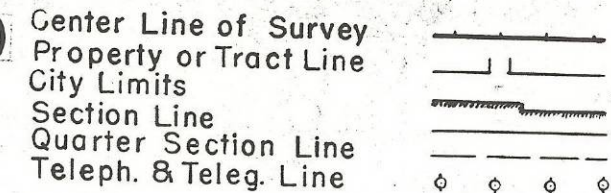
COLORADO STATE HIGHWAY DEPARTMENT

PLAN AND PROFILE OF PROPOSED FEDERAL AID PROJECT NO. F 22-1(I) & F23-1(I) STATE HIGHWAY NO. 10 & 106 MONTEZUMA COUNTY

FED. ROAD DIST. NO.	STATE	F.A.P. PROJ. NO.	SHEET NO.	TOTAL SHEETS
3	COLO.	F 22-1(I) F 23-1(I)	1	

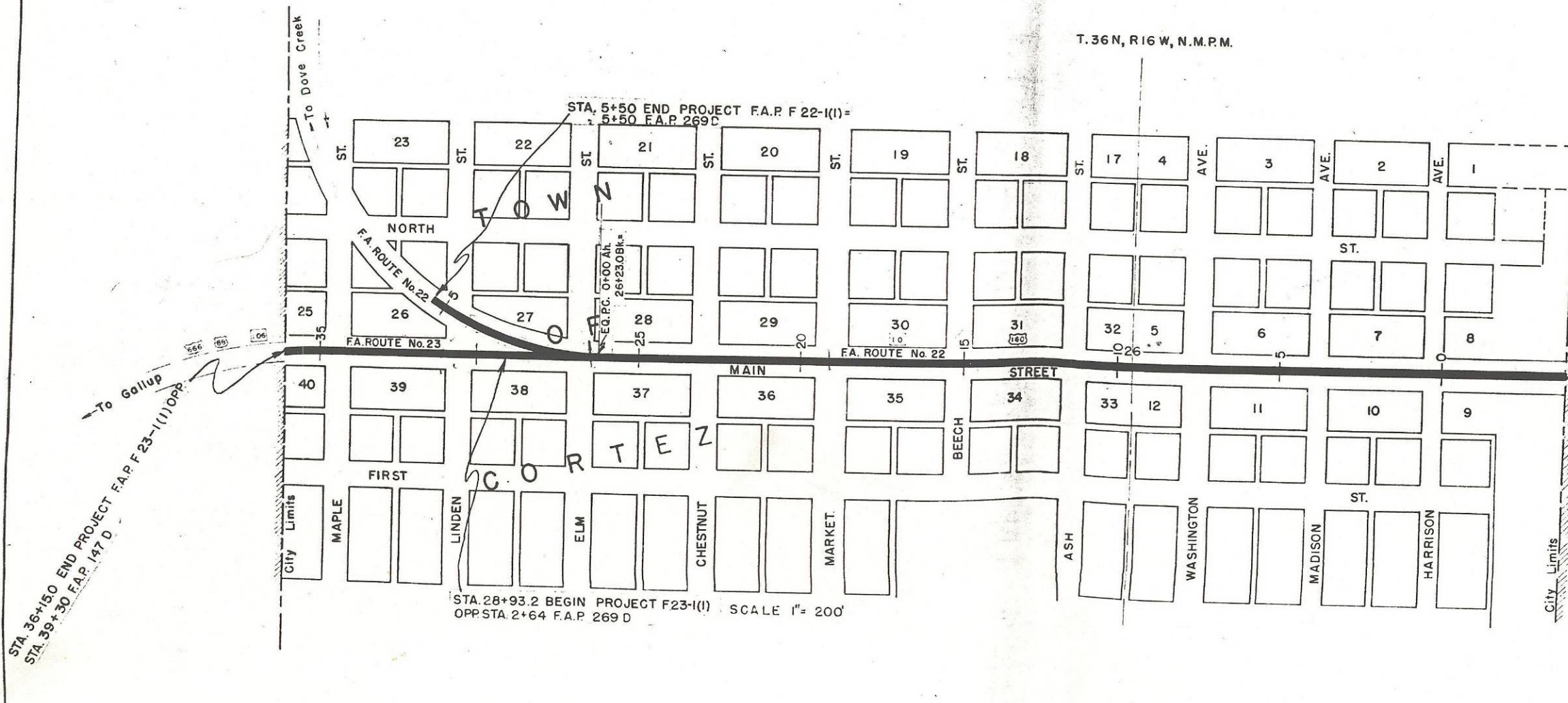
Rev. 10/24/47 J.R.W.
22,0101

CONVENTIONAL SIGNS



SCALES OF ORIGINAL TRACINGS
ON PLAN, 1 IN. = 100 FT.
ON PROFILE, 1 IN. = 100 FT. HORIZONTAL
1 IN. = 10 FT. VERTICAL
GRADE LINE ON PROFILE IS SHOWN AS GRADE OF FINISHED ROAD

F.A.P. F22-1(I)	GROSS LENGTH OF PROJECT	
	NET LENGTH OF PROJECT	3,550.0 LIN. FT. = 0.672 MILES
F.A.P. F23-1(I)	GROSS LENGTH OF PROJECT	
	NET LENGTH OF PROJECT	721.8 LIN. FT. = 0.136 MILES



NOTE:
It is recommended that bidders on this Project go over the plan details with the following field representative of this Department.
Mr. J.E. Casey, Division Engineer, Durango, Colo.

STA. -3+77.0 BEGIN PROJECT F.A.P. F 22-1(I) OPP.
STA. 0+60 F.A.P. 269-A
STA. 0+60 F.A.P. 147 D

RECOMMENDED FOR APPROVAL

Just B. Bell
ASSISTANT ENGINEER
DATE 7-18-47

APPROVED

Mark A. Watson
STATE HIGHWAY ENGINEER
DATE 9-18-47

RECOMMENDED FOR APPROVAL DATE

DISTRICT ENGINEER
PUBLIC ROADS ADMINISTRATION
FEDERAL WORKS AGENCY

APPROVED DATE

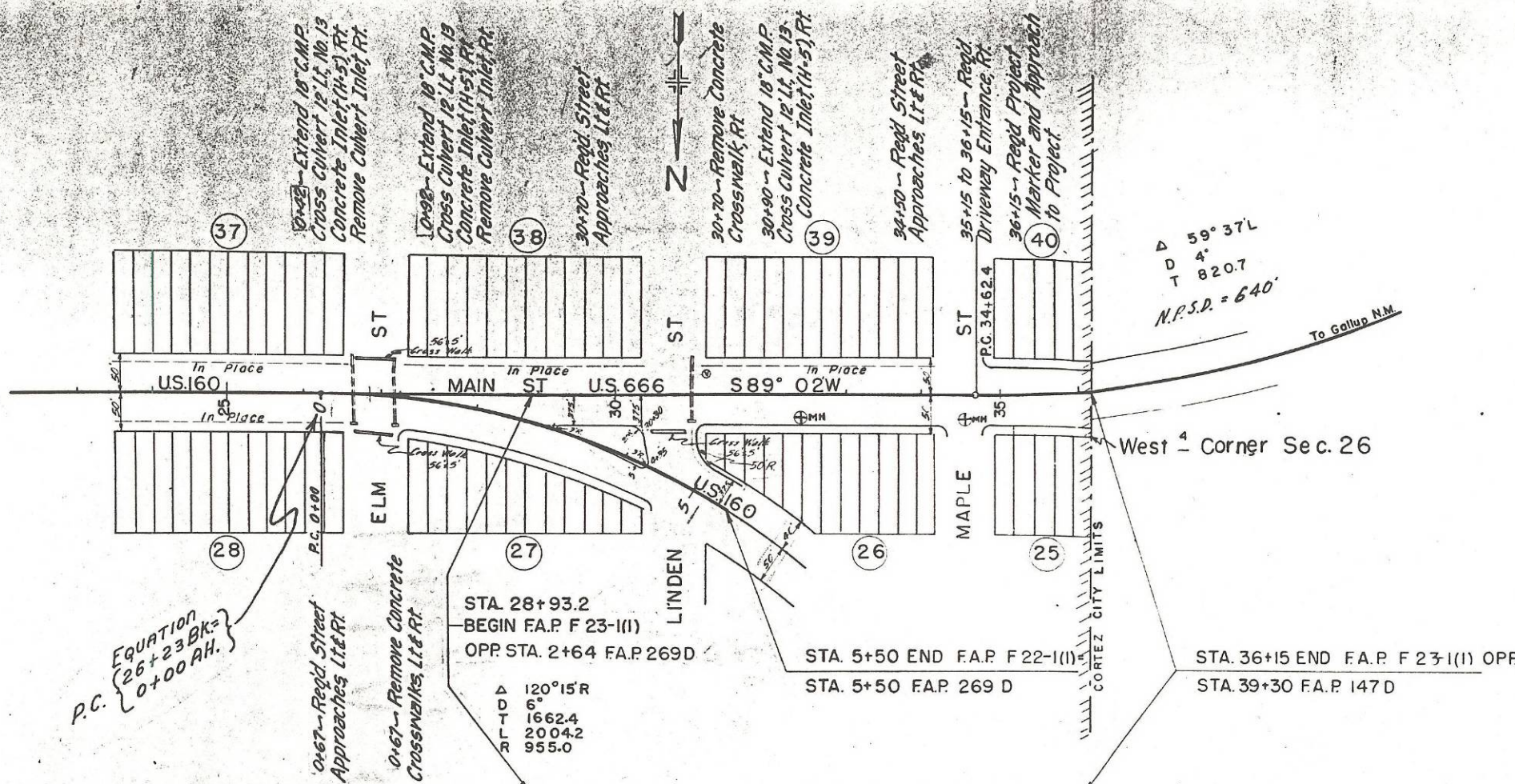
DISTRICT ENGINEER
PUBLIC ROADS ADMINISTRATION
FEDERAL WORKS AGENCY

STA. 36+150 END PROJECT F.A.P. F 23-1(I) OPP.
STA. 39+30 F.A.P. 147 D

STA. 28+93.2 BEGIN PROJECT F23-1(I) OPP. STA. 2+64 F.A.P. 269 D
SCALE 1" = 200'

FED. ROAD DIST. NO.	STATE	PROJ. NO.	SHEET NO.	TOTAL SHEETS
3	COLO.	F 22-101 F 23-101	10	

REV 10/24/67 J.R.M.



Δ 59° 37'L
D 4'
T 820.7
N.P.S.D. = 640'

West 1/4 Corner Sec. 26

EQUATION
(26+23 BK =
0+00 AH.)
P.C.

STA. 28+93.2
BEGIN F.A.P. F 23-1(I)
OPP. STA. 2+64 F.A.P. 269 D

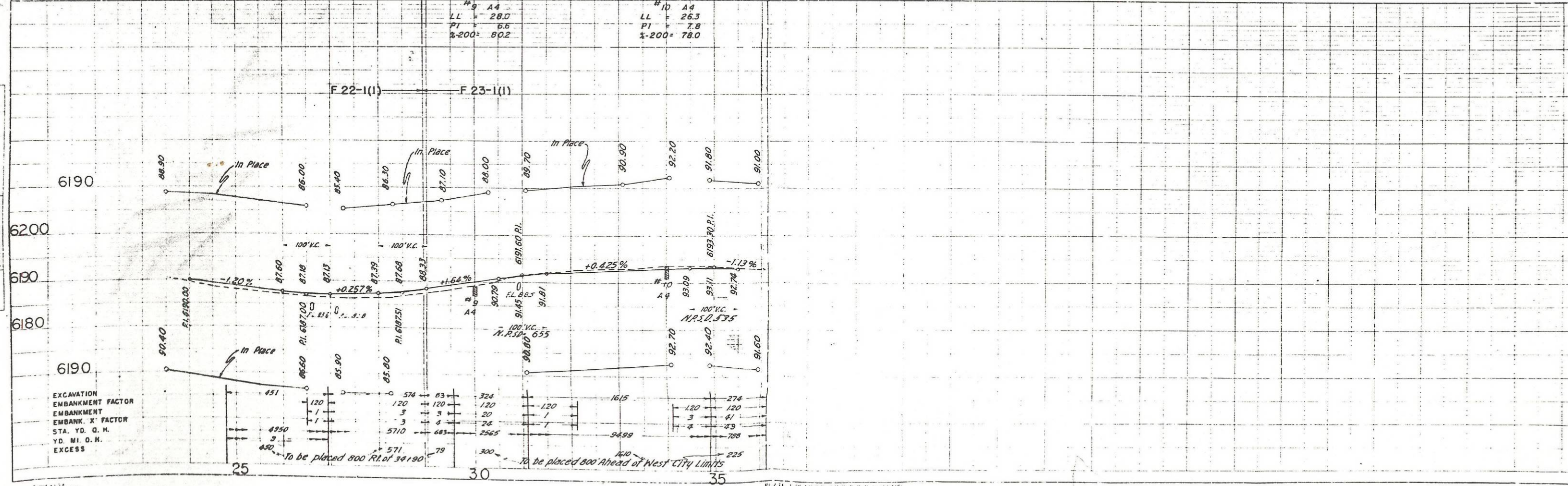
STA. 5+50 END F.A.P. F 22-1(I)
STA. 5+50 F.A.P. 269 D

STA. 36+15 END F.A.P. F 23-1(I) OPP.
STA. 39+30 F.A.P. 147 D

Δ 120° 15'R
D 6'
T 1662.4
N.P.S.D. 2004.2
9555.0

#9 A4	#10 A4
LL = 28.0	LL = 26.3
PI = 5.6	PI = 7.8
±-200 = 80.2	±-200 = 78.0

F 22-1(I) — F 23-1(I)



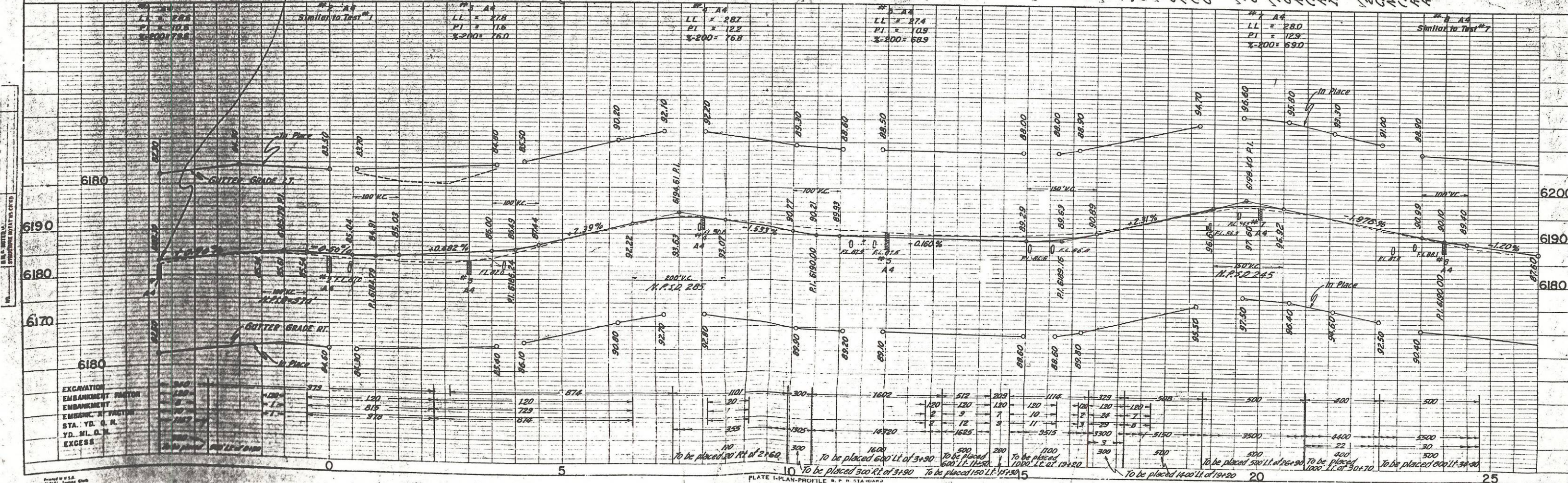
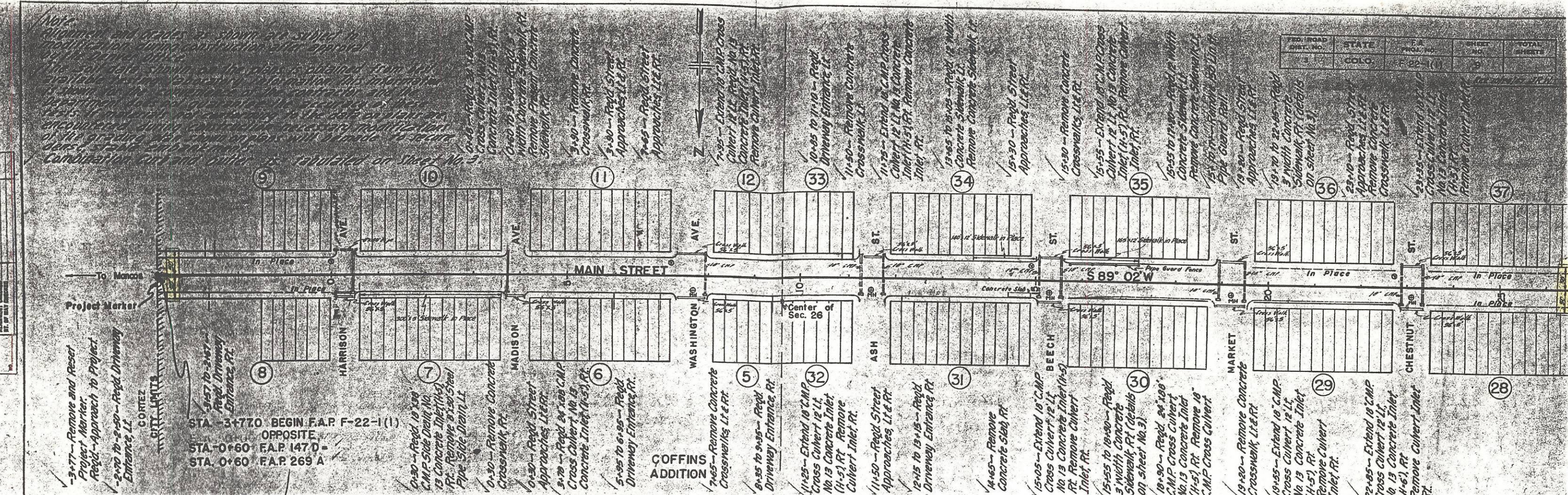
EXCAVATION
EMBANKMENT FACTOR
EMBANKMENT
EMBANK. X FACTOR
STA. YD. O. M.
YD. MI. O. M.
EXCESS

To be placed 800 ft. ahead of 34+190
To be placed 800 ft. ahead of West City Limits

1. LAW SURVEYED
2. PLOTTED
3. CHECKED
4. NO. OF WAY CHECKED

1. PROFILE SURVEYED
2. GRADES CHECKED
3. STA. NO. CHECKED
4. STRUCTURE NOTATIONS CHECKED

FED. ROAD DIST. NO.	STATE	F.A. PROJ. NO.	SHEET NO.	TOTAL SHEETS
5	COLORADO	F-22-1(1)	9	10



EXCAVATION	EMBANKMENT	EMBANKMENT	EMBANKMENT	STA. YD. G. M.	YD. M. D. M.	EXCESS
120	120	120	120	120	120	120
120	120	120	120	120	120	120
120	120	120	120	120	120	120
120	120	120	120	120	120	120

PLATE 1-PLAN-PERFILING OF MAIN STREET