

FED. ROAD DIST. NO.	STATE	PROJ. NO.	SHEET NO.	TO SHI
3	COLO.	F 292(8)	1	

RIGHT OF WAY
 11-7-46
 1-3-47

INDEX OF SHEETS
 1. TITLE SHEET
 2. TABULATION OF PROPERTIES
 3-9. PLAN AND PROFILE SHEETS
 SHOWING RIGHT OF WAY
 REQUIRED

COLORADO

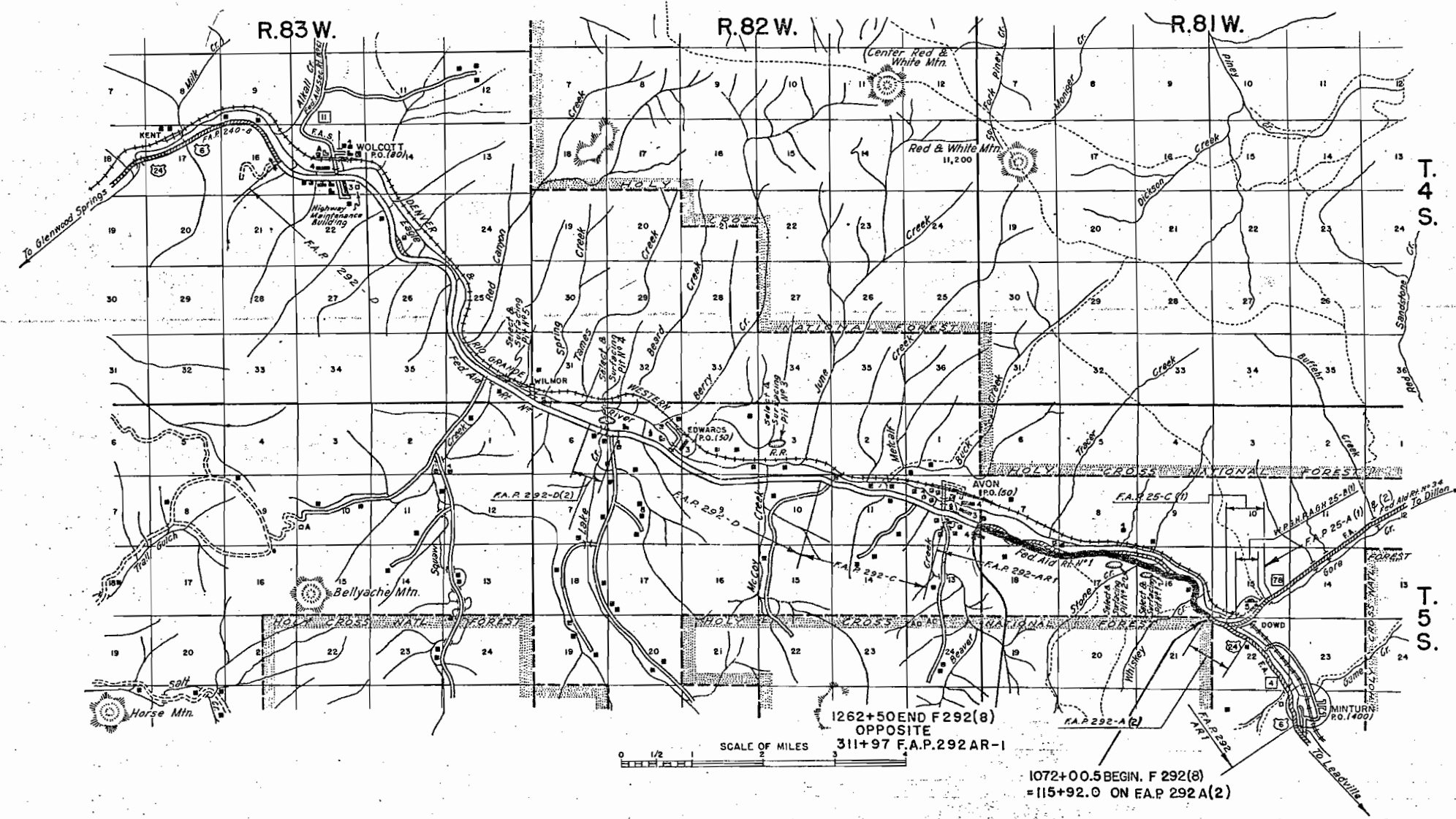
STATE HIGHWAY DEPARTMENT

PLAN AND PROFILE OF PROPOSED FEDERAL AID PROJECT NO. F 292(8) STATE HIGHWAY NO. 4 EAGLE COUNTY

SCALES OF ORIGINAL TRACINGS
 ON PLAN, 1 IN. = 100 FT.
 ON PROFILE 1 IN. = 100 FT. HORIZONTAL
 1 IN. = 10 FT. VERTICAL
 GRADE LINE ON PROFILE IS SHOWN AS GRADE OF FINISHED ROAD
 GROSS LENGTH OF PROJECT 19056.7 FT. = 3.609 MI.
 NET LENGTH OF PROJECT

RIGHT OF WAY

INFORMATION OBTAINED FROM AVAILABLE COUNTY RECORDS



N. E. 1/4 Sec. 21

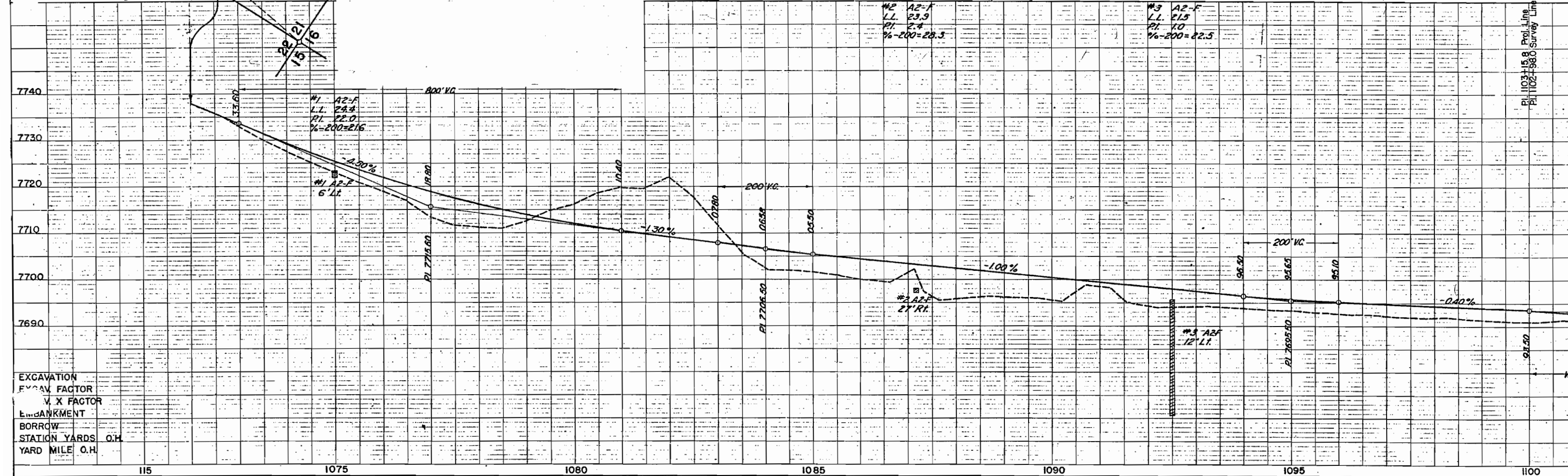
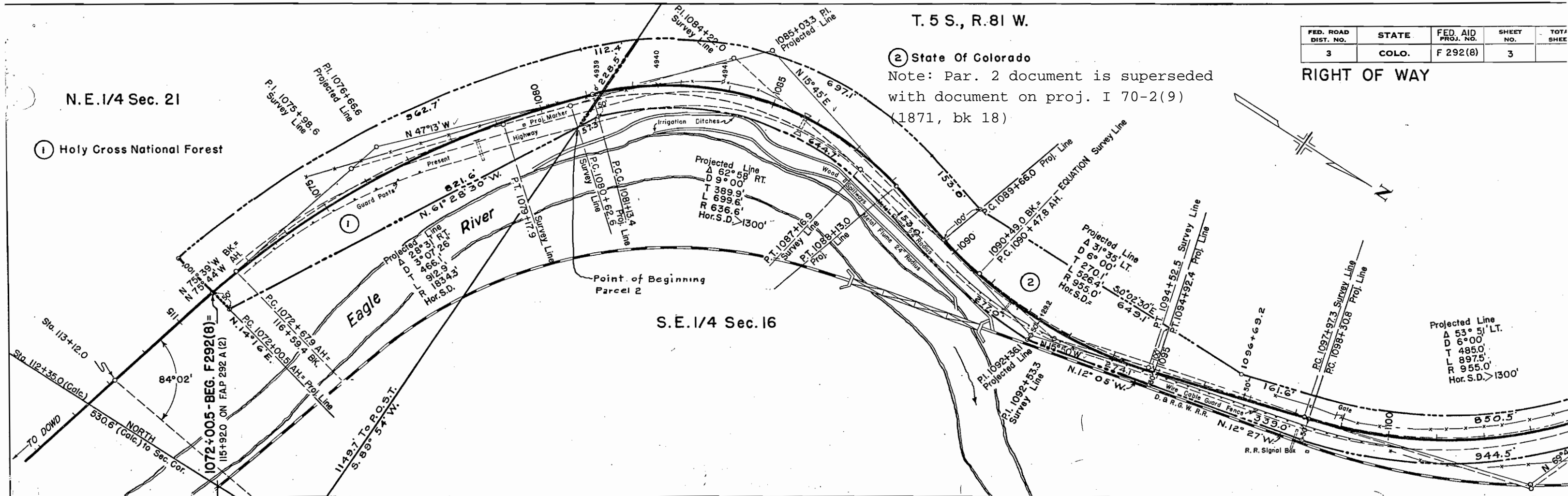
Holy Cross National Forest

T. 5 S., R. 81 W.

State Of Colorado
Note: Par. 2 document is superseded
with document on proj. I 70-2(9)
(1871, bk 18)

FED. ROAD DIST. NO.	STATE	FED. AID PROJ. NO.	SHEET NO.	TOT. SHEET
3	COLO.	F 292(8)	3	

RIGHT OF WAY



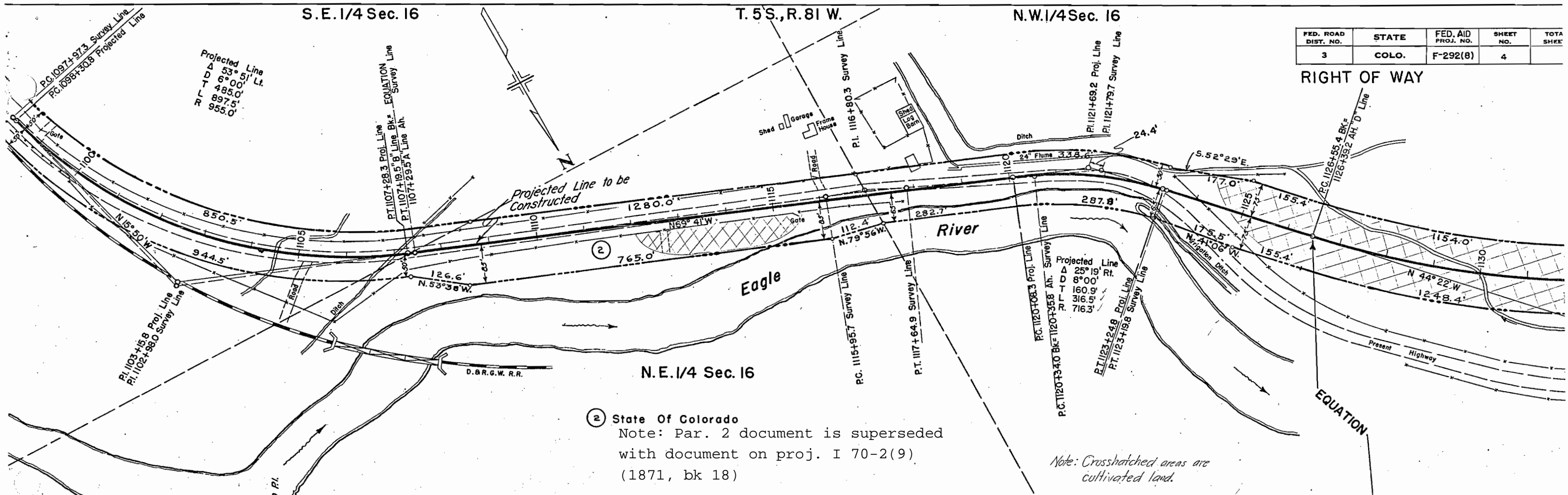
S.E. 1/4 Sec. 16

T. 5 S., R. 81 W.

N.W. 1/4 Sec. 16

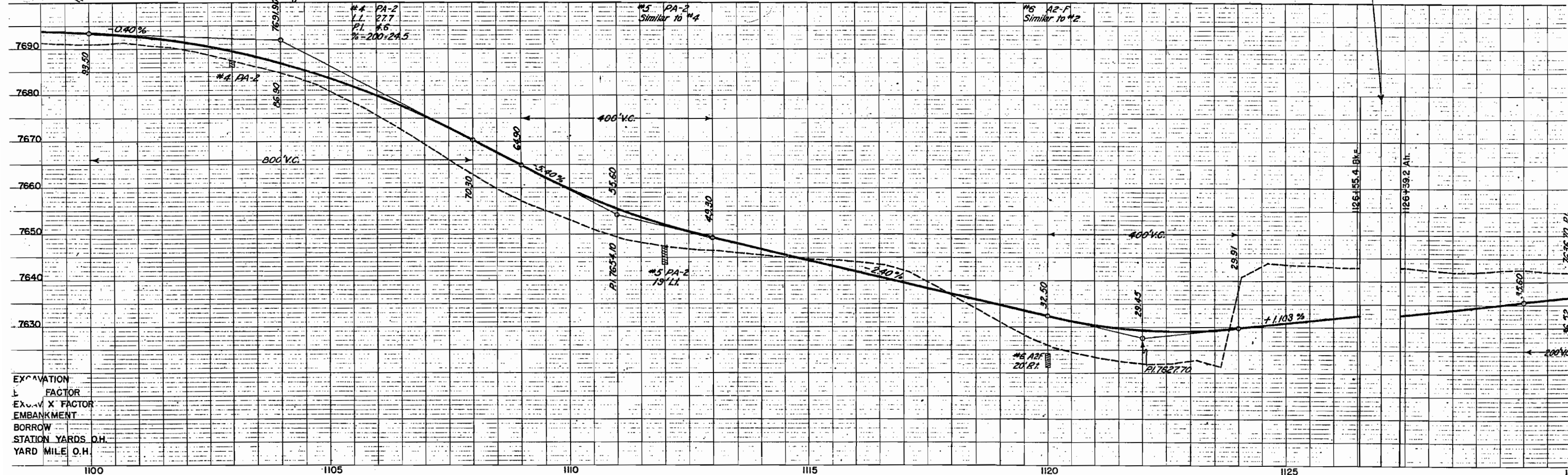
FED. ROAD DIST. NO.	STATE	FED. AID PROJ. NO.	SHEET NO.	TOTAL SHEETS
3	COLO.	F-292(8)	4	

RIGHT OF WAY



② State Of Colorado
 Note: Par. 2 document is superseded with document on proj. I 70-2(9) (1871, bk 18)

Note: Crosshatched areas are cultivated land.



EXCAVATION
 FACTOR
 EXC. X FACTOR
 EMBANKMENT
 BORROW
 STATION YARDS O.H.
 YARD MILE O.H.

T. 5 S., R. 81 W.

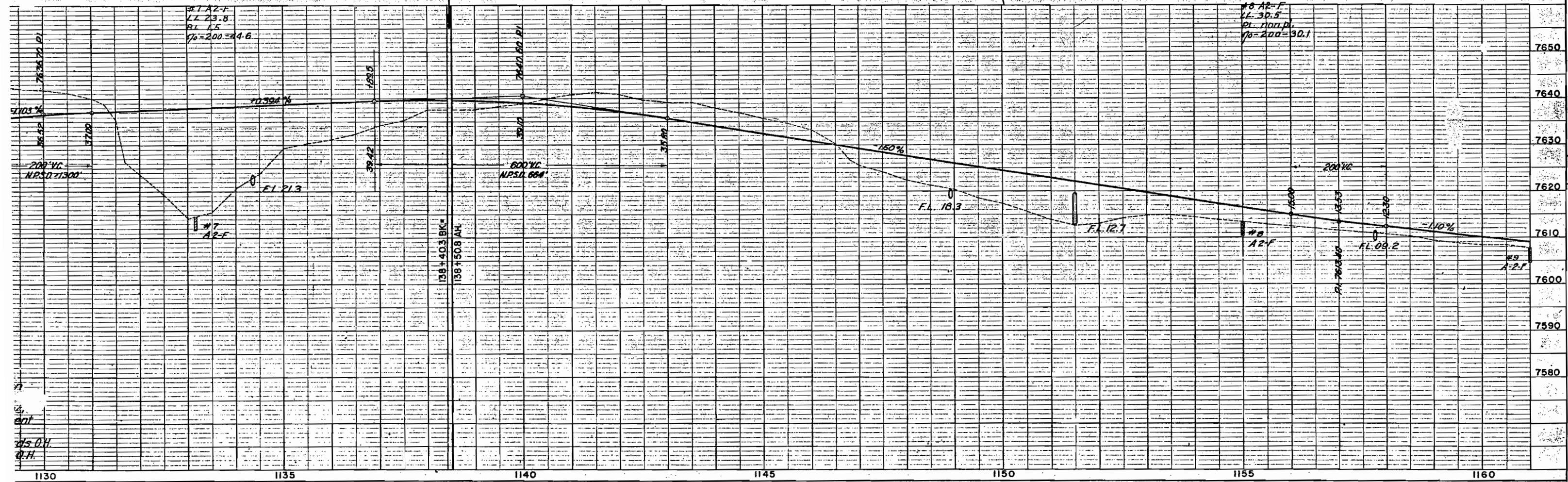
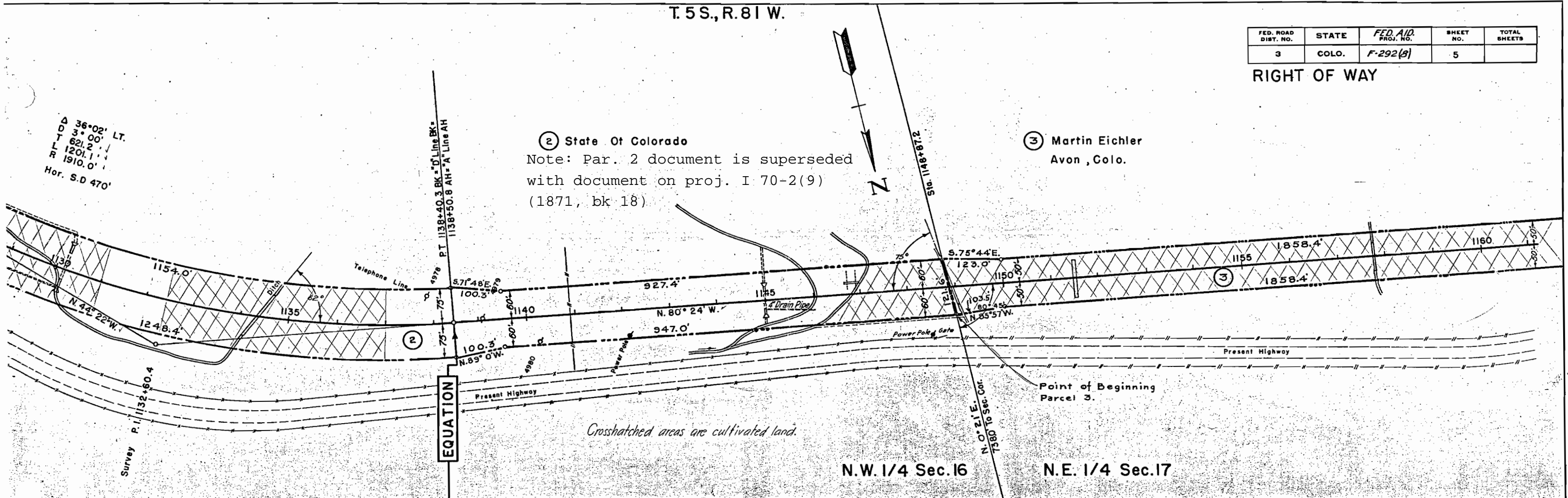
FED. ROAD DIST. NO.	STATE	FED. AID PROJ. NO.	SHEET NO.	TOTAL SHEETS
3	COLO.	F-292(3)	5	

RIGHT OF WAY

Δ 36°02' LT.
 3°00'
 621.2'
 1201.1'
 R 1910.0'
 Hor. S.D 470'

② State Of Colorado
 Note: Par. 2 document is superseded with document on proj. I 70-2(9) (1871, bk 18)

③ Martin Eichler
 Avon, Colo.



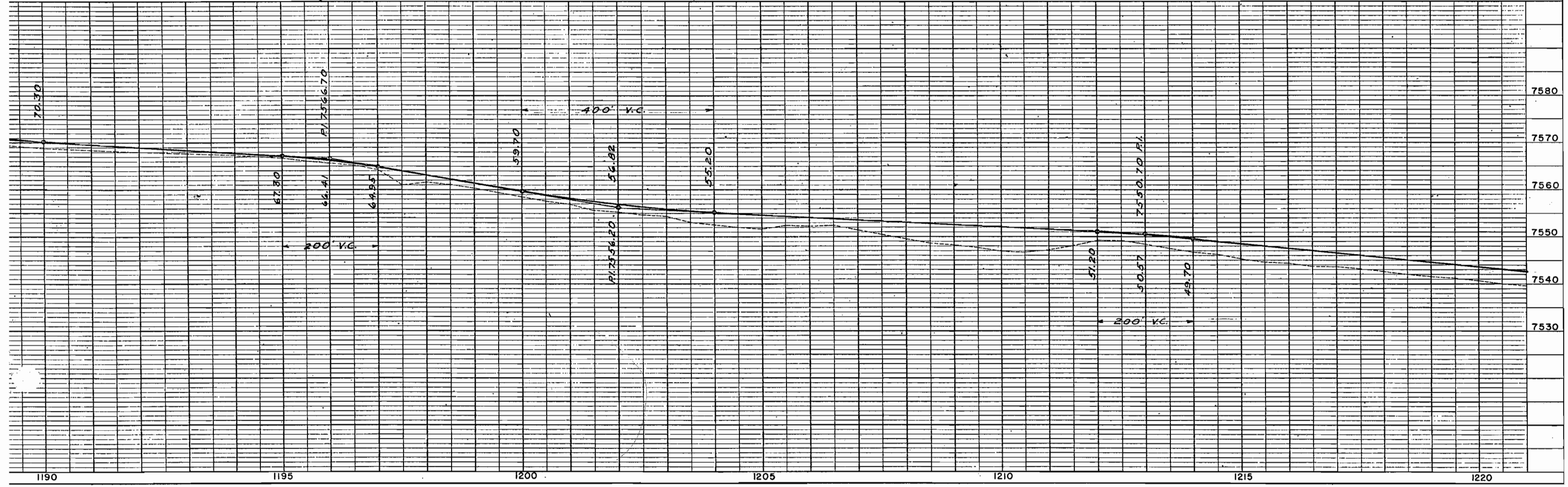
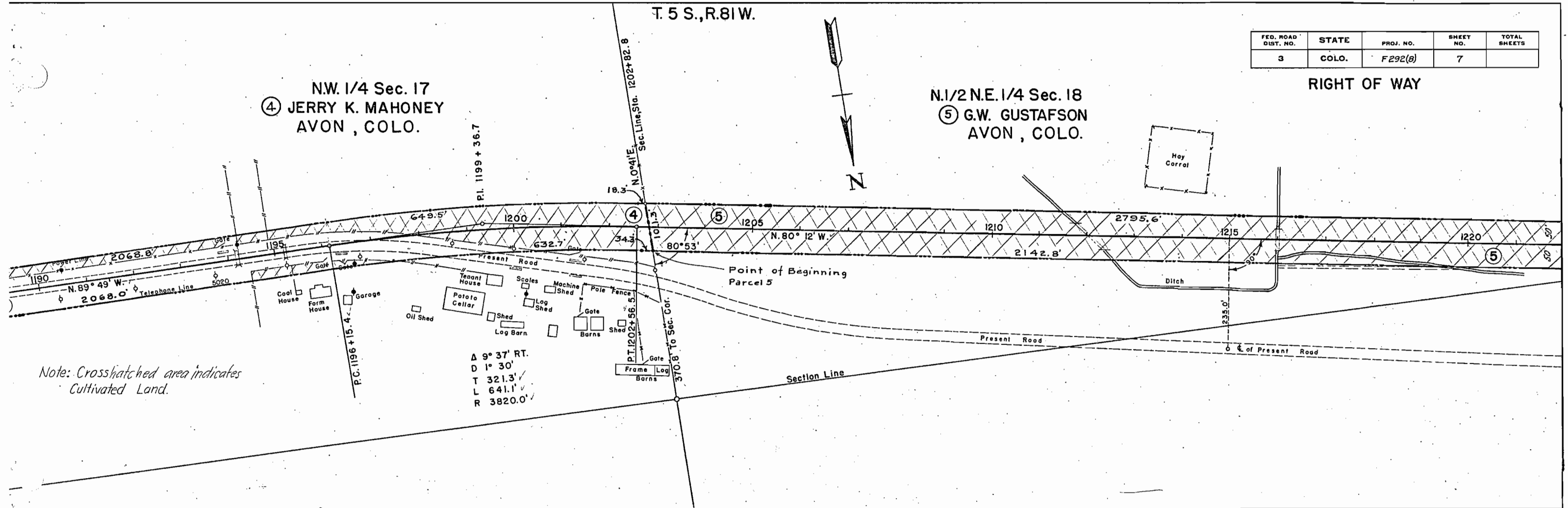
FED. ROAD DIST. NO.	STATE	PROJ. NO.	SHEET NO.	TOTAL SHEETS
3	COLO.	F292(B)	7	

RIGHT OF WAY

T. 5 S., R. 81 W.

N.W. 1/4 Sec. 17
 ④ JERRY K. MAHONEY
 AVON, COLO.

N. 1/2 N.E. 1/4 Sec. 18
 ⑤ G.W. GUSTAFSON
 AVON, COLO.



N.E. 1/4 Sec. 18.

T. 5 S., R. 81 W.

N.W. 1/4 Sec. 18.

FED. ROAD DIST. NO.	STATE	FED. AID PROJ. NO.	SHEET NO.	TOTAL SHEETS
3	COLO.	F-292(8)	8	

RIGHT OF WAY

5 G.W. Gustafson Avon, Colo.

7 G.W. & Hilma Gustafson Avon, Colo.

6 G.W. & Hilma Gustafson Avon, Colo.

8 G.W. Gustafson Avon, Colo.

S.E. 1/4 Sec. 7.

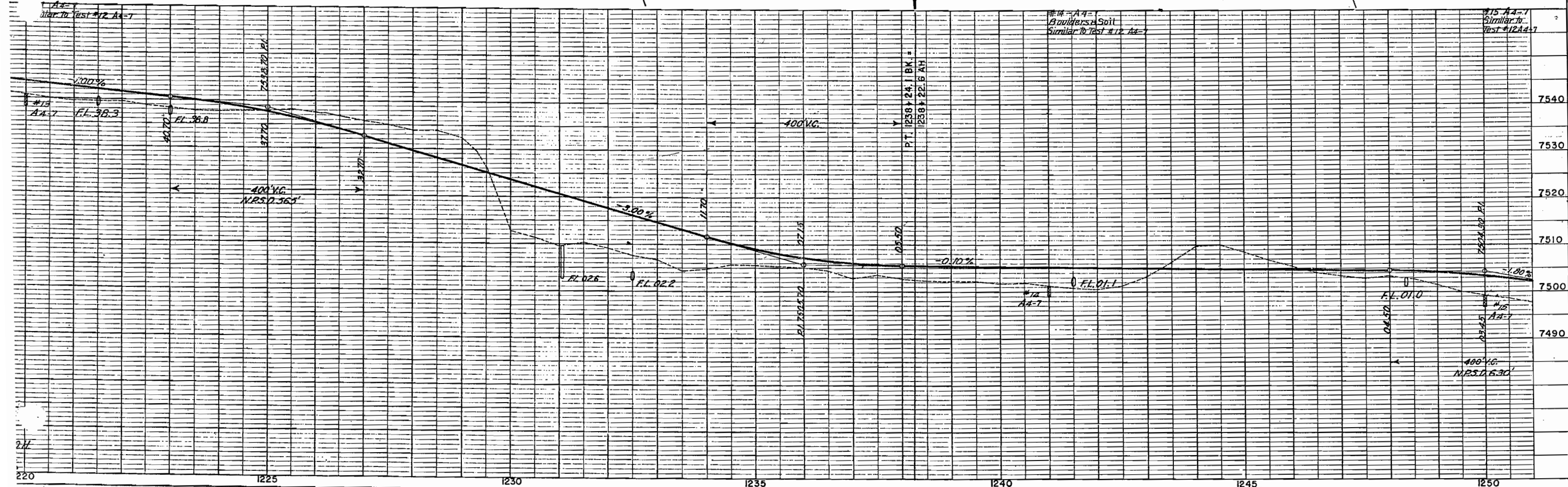
S.W. 1/4 Sec. 7.

N. 1/4 Cor. Sec. 18
S. 1/4 Cor. Sec. 7
Point of Beginning
Parcels 6 & 7

A 17° 21' RT.
D 3° 00'
T 291.4'
L 578.3'
R 1910.0'
Hor. S.D. > 1300'

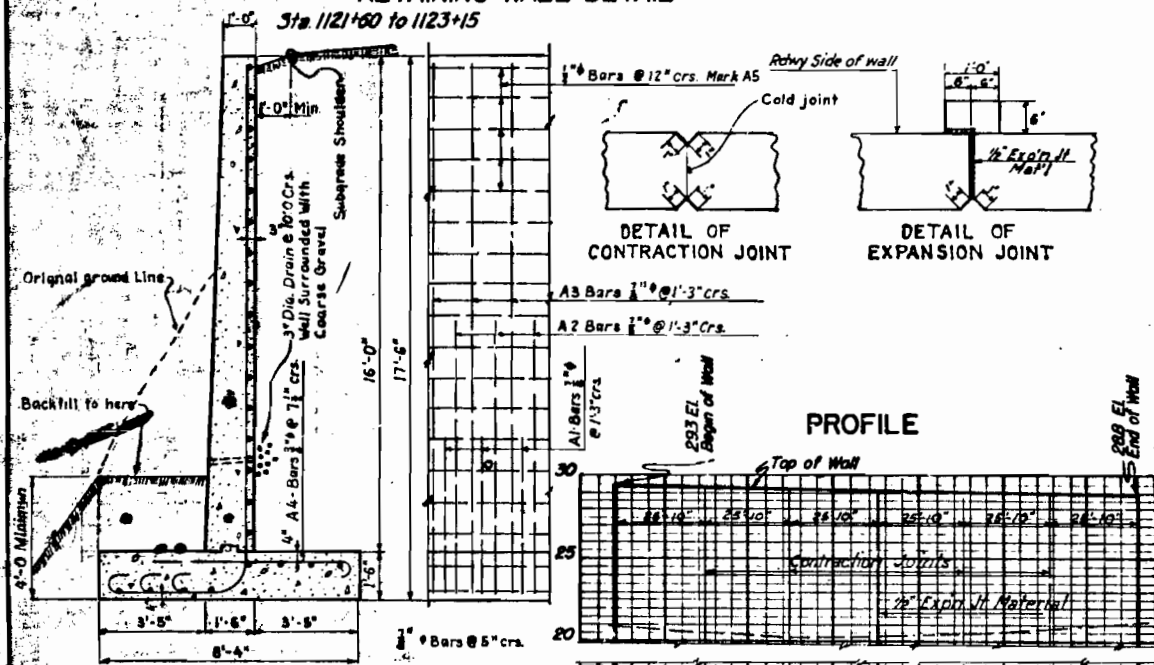
EQUATION

Crosshatched areas are cultivated land.



Redesign - 11-7-46 - C.R.S.

RETAINING WALL DETAIL



R. O. W. MARKERS

STATION	SIDE	NO.
1072+00.5	Rt & Lt	2
1081+13.4	Rt	1
1082+20	Lt	1
1089+66	Lt	1
1092+29.2	Rt	1
1094+92.4	Rt	1
1096+63.2	Lt	1
1098+30.8	Rt	1
1107+28.3	Rt	1
1108+50	Rt	1
1108+66	Lt	1
1116+84	Lt	1
1123+24.8	Rt & Lt	2
1125+00	Rt & Lt	2
1138+40.3 Bk.	Rt & Lt	2
1139+50	Rt & Lt	2
1148+80	Lt	1
1148+97	Rt	1
1150+00	Rt & Lt	2
1175+47	Rt & Lt	2
1202+74.8	Lt	1
1202+90.8	Rt	1
1224+30	Rt	1
1229+00	Rt	1
1230+00	Rt	1
1230+70	Lt	1
1230+90	Lt	1
1230+98	Rt	1
1239+00	Rt	1
1240+00	Rt	1
1245+38	Lt	1
1245+87	Rt	1
1260+52.4	Lt	1
1261+03.6	Rt	1
1262+50	Rt & Lt	2
TOTALS		43

SURFACING PLAN

It is estimated that material for Gravel Surfacing for the Project is available in the vicinity of the pit indicated in the following tabulation. Estimated Quantities involved in this operation are shown below. No alteration of the Surfacing Plan as here outlined will be allowed without written permission from the Department.

MATERIAL TO BE PLACED STA. TO STA.	SOURCE	QUANTITY		OVERALL TON MILES	
		TONS AVAIL.	TONS USED		
1072+00.5 AH - 1087+26	Pit No. 1, 150' Lt. of Sta. 1138+50 in NW 1/4 Sec. 16, T.5S, R. 81 W.	Ample	443	361	203
1087+26 - 1189+81			2975	6464	0
1189+81 - 1262+50			2109	4581	4607
Estimated for Road Approaches			500	140	175
Estimated for Widening at Bridge			13	27	2
TOTALS			6040	12173	4988

TABULATION OF LENGTH & DESIGN

Station	Roadway		Bridges	
	Lim. Ft.	Lim. Ft.	Lim. Ft.	Lim. Ft.
115+92.0 on F.A.P. 292 A(2) - 1072+00.5 Begin F-292 (B)				
1126+55.4 Bk. Equation				
1126+53.2 Ah.				
1138+40.3 Bk. Equation				
1138+50.8 Ah.				
1238+24.1 Bk. Equation				
1238+22.6 Ah.				
1262+50 End F-292 (B) opposite 311+97 on F.A.P. 292 AR-1				
TOTALS	19056.7	0		

BAR LIST

MARK	SIZE	REQD.	TYPE	LENGTH	q	m	r	t	TOTAL LENGTH
A1	1/2"	122	I	10'-0"	4'-1"	3'-2"	3'-3"	3'-3"	1220
A2	1/2"	122	I	12'-9"	7'-10"	2'-2"	3'-3"	3'-3"	1556
A3	1/2"	23	I	20'-0"	16'-1"	1'-2"	3'-3"	3'-3"	2460
A4	3/4"	248	I	7'-0"	6'-0"		3'-3"	2'-3"	1736
A5	3/4"	96	Diagonal	40'-0"					3840

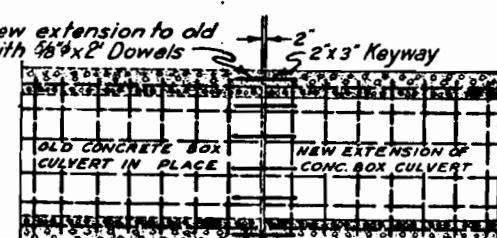
SUMMARY

5236	Lin. Ft. of 1/2" @ 2044 per Lin. Ft. =	10702	Lbs.
1736	" " " 3/4" @ 502 " " " =	2607	"
3840	" " " 3/4" @ 668 " " " =	2565	"
	+ 1% Overrun	158	"
	Total	16,030	"

QUANTITIES

Class 7' Concrete	187 cu. yds.
Reinforcing Steel	16,930 lbs.
Expansion Jt. Material	33 Sq. Ft.
Structural Excavation (Dry)	420 cu. yds.
Mechanical Tampers	180 cu. yds.
	35 Hrs.

DETAIL OF JOINT FOR CONCRETE BOX CULVERT EXTENSION



Place one dowel to each U-Bar shown on Standard Concrete Box Culvert Sheet M-103-F. Dowel Bars are to be grouted in place with a cement grout composed of one part cement and two parts of clean, well graded sand. The cost of drilling holes, grouting and placing dowels is to be included in payment for Reinforcing Steel. NOTE: The cost of Removing Headwall and Cutting Keyway is to be paid for at Contract Unit Price each.

BALLAST MATERIAL TABULATION

It is estimated that Ballast material for the Project is available in the vicinity of the pit indicated in the following tabulation. Estimated Quantities involved in this operation are shown below. No alteration of the Ballast Material Plan as here outlined will be allowed without written permission from the Department.

MATERIAL TO BE PLACED STA. TO STA.	SOURCE	AVAILABLE	THICKNESS INCHES		CU YDS. USED	OVERALL	
			' T	' I		STA. YDS.	YARD MILES
1072+00.5 - 1143+50	Pit No. 2 - 350' Rt.	Ample	6"	6"	5438	59818	3685
1143+50 - 1154+50	Sta. 1156+00 in NE 1/4 Sec. 17		6"	6"	836	4590	
1154+50 - 1157+50	T.5S, R. 81 W.		6"	6"	228	778	778
1157+50 - 1168+50			6"	6"	836	4590	
1168+50 - 1170+00			6"	6"	114	1254	2
1170+00 - 1198+00			12"	12"	4160	45760	1163
1198+00 - 1225+00			6"	6"	2204	24244	1754
1225+00 - 1235+00			12"	12"	1600	17600	1864
1235+00 - 1262+50			6"	6"	2092	23012	3180
Estimated for Bridge widening			6"	6"	30	330	33
TOTALS					17538	181,214	11,661