

Colorado Department of Transportation



222 South 6th Street  
Room 317  
Grand Junction, CO 81501  
Phone: 970-683-6233 FAX: 970-683-6249

Region 3

JACK MESSENGER, PLS

Sheet Revisions		
Date	Description	Initials
mm/dd/yy		

Sheet Revisions		
Date	Description	Initials
mm/dd/yy		

Sheet Revisions		
Date	Description	Initials
mm/dd/yy		

**LUND**

PARTNERSHIP  
12265 W. Bayaud Avenue, Suite 130  
Lakewood, Colorado 80228  
P:303.989.1461 F:303.989.4094  
CIVIL ENGINEERING  
& SURVEYING

Land Survey Control Diagram and ROW Plan			
Control Monument Coordinate Tables			
Project Number: HPP 0241-058			
Project Location: STATE HIGHWAY 24			
LAKE COUNTY, COLORADO			
Project Code	Last Mod. Date	Subset	Sheet No.
18283	06-20-2012	4.02 of 4.04	4.02

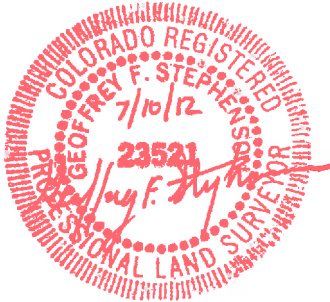
▲ **GEODETIC COORDINATE SUMMARY TABLE OF SURVEY CONTROL POINTS - FOUND AND VERIFIED ON 12/21/2011 (U.S. FEET):**

POINT NO.	GEODETIC COORDINATES - NAD 83 (1992)		ELLIPSOID HEIGHT	MAPPING ANGLE	NAD 83 (1992) ZONE 502 (SFT)		POINT NO.	PROJECT COORDINATES		NAVD 88 ELEVATION	DESCRIPTION
	LATITUDE	LONGITUDE			NORTHING	EASTING		NORTHING	EASTING		
SH 24 CM-MP 169.40	39° 19' 16.70547" N	106° 20' 09.88354" W	9898.46	-0°31'38.3"	1543006.66	2763475.93	SH 24 CM-MP 169.40	887665.76	1452621.51	9940.46	FOUND 3 1/4" ALUMINUM CAP TYPE 2 MONUMENT STAMPED IN PART "CONTROL MONUMENT - STATE HIGHWAY 24 - MSM - CDOT - MP 169.40"
SH 24 CM-MP 169.25	39° 19' 24.61653" N	106° 20' 09.91722" W	9911.65	-0°31'38.3"	1543807.04	2763480.65	SH 24 CM-MP 169.25	888466.57	1452626.23	9953.59	FOUND 3 1/4" ALUMINUM CAP TYPE 2 MONUMENT STAMPED IN PART "CONTROL MONUMENT - STATE HIGHWAY 24 - MSM - CDOT - MP 169.25"
SH 24 CM-MP 168.85	39° 19' 45.44222" N	106° 20' 02.16048" W	9949.86	-0°31'33.4"	1545908.35	2764109.50	SH 24 CM-MP 168.85	890569.00	1453255.42	9991.76	FOUND 3 1/4" ALUMINUM CAP TYPE 2 MONUMENT STAMPED IN PART "CONTROL MONUMENT - STATE HIGHWAY 24 - MSM - CDOT - MP 168.85"
SH 24 CM-MP 168.70	39° 19' 53.57308" N	106° 20' 00.46846" W	9987.99	-0°31'32.4"	1546729.72	2764249.99	SH 24 CM-MP 168.70	891390.81	1453395.98	10029.87	FOUND COLORADO DEPARTMENT OF TRANSPORTATION TYPE 2 MONUMENT ROD AT GROUND LEVEL - CAP MISSING
SH 24 CM-MP 168.55*	39° 19' 59.63433" N	106° 19' 52.75849" W	10030.38	-0°31'27.5"	1547337.38	2764861.37	SH 24 CM-MP 168.55*	891998.79	1454007.69	10072.25	FOUND 3 1/4" ALUMINUM CAP TYPE 2 MONUMENT STAMPED IN PART "CONTROL MONUMENT - STATE HIGHWAY 24 - MSM - CDOT - MP 168.55"

\*Denotes Control Points Not Shown Graphically On Diagram

◆ ◐ ▲ **ALIQUOT CORNERS TABULATION PROJECT SPECIFIC COORDINATES (U.S. FEET):**

POINT NO.	PROJECT COORDINATES		LOCATION	DESCRIPTION
	NORTHING	EASTING		
2006	891426.04	1453331.35	EAST 1/16TH CORNER SECS 21 & 28, T8S, R80W, 6TH P.M.	FOUND 3 1/4" BRASS CAP STAMPED IN PART "LAKE COUNTY SURVEY MONUMENT - T8S R80W E 1/16 - S21 S28 - LS 4002 - 1974"
2023	888802.68	1452006.38	CENTER 1/4 CORNER SECTION 28, T8S, R80W, 6TH P.M.	FOUND 2 1/2" ALUMINUM CAP STAMPED IN PART "ALPINE SURVEYORS - T8S R80W - C 1/4 S28 - PLS 18974 - 1998"
2025	886192.91	1452017.76	SOUTH 1/4 CORNER SECTION 28, T8S, R80W, 6TH P.M.	FOUND 2 1/2" ALUMINUM CAP STAMPED IN PART "ALPINE SURVEYORS - T8S R80W - 1/4 S28 S33 - PLS 18974 - 1998"
2029	886194.11	1453335.27	EAST 1/16TH CORNER SECS 28 & 33, T8S, R80W, 6TH P.M.	FOUND 2 1/2" ALUMINUM CAP STAMPED IN PART "ALPINE SURVEYORS - T8S R80W - E 1/16 S28 S33 - PLS 18974 - 1998"



◻ **FOUND RIGHT OF WAY MONUMENT TABULATION PROJECT SPECIFIC COORDINATES (U.S. FEET):**

POINT NO.	PROJECT COORDINATES		NAVD 88 ELEVATION	DESCRIPTION
	NORTHING	EASTING		
2002	887964.01	1452599.90	9941.49	FOUND 3" BRASS CAP IN CONC POST STAMPED IN PART "STATE HWY DEPT-ROW MARKER-STA 306+"
2003	887961.33	1452699.94	9952.12	FOUND 3" BRASS CAP IN CONC POST STAMPED IN PART "STATE HWY DEPT-ROW MARKER-STA 306+53.3"
2027 *	883567.38	1453581.61	9949.14	FOUND 3" BRASS CAP IN CONC POST STAMPED IN PART "STATE HWY DEPT-ROW MARKER-STA 261+54.3"
2028 *	883567.41	1453696.72	9951.15	FOUND 3" BRASS CAP IN CONC POST STAMPED IN PART "STATE HWY DEPT-ROW MARKER-STA 261+27.4"

\*Denotes ROW Monuments Not Shown Graphically On Diagram

**SURVEY CONTROL POINT NOTE:**

Data and coordinate values shown hereon for project control points are based upon the Survey Control Diagram prepared for Colorado Department of Transportation Project Number STA 0241-039 (Project Code 13606). Said diagram was prepared by Mountain Surveying & Mapping, Inc. on or about January 2002. The Lund Partnership field verified the existence, condition, and values of the control monuments shown hereon for use in this project.

### Region 3

**JACK MESSENGER, PLS**

Sheet Revisions		
Date	Description	Initial
mm/dd/yy		

[illegible][illegible]

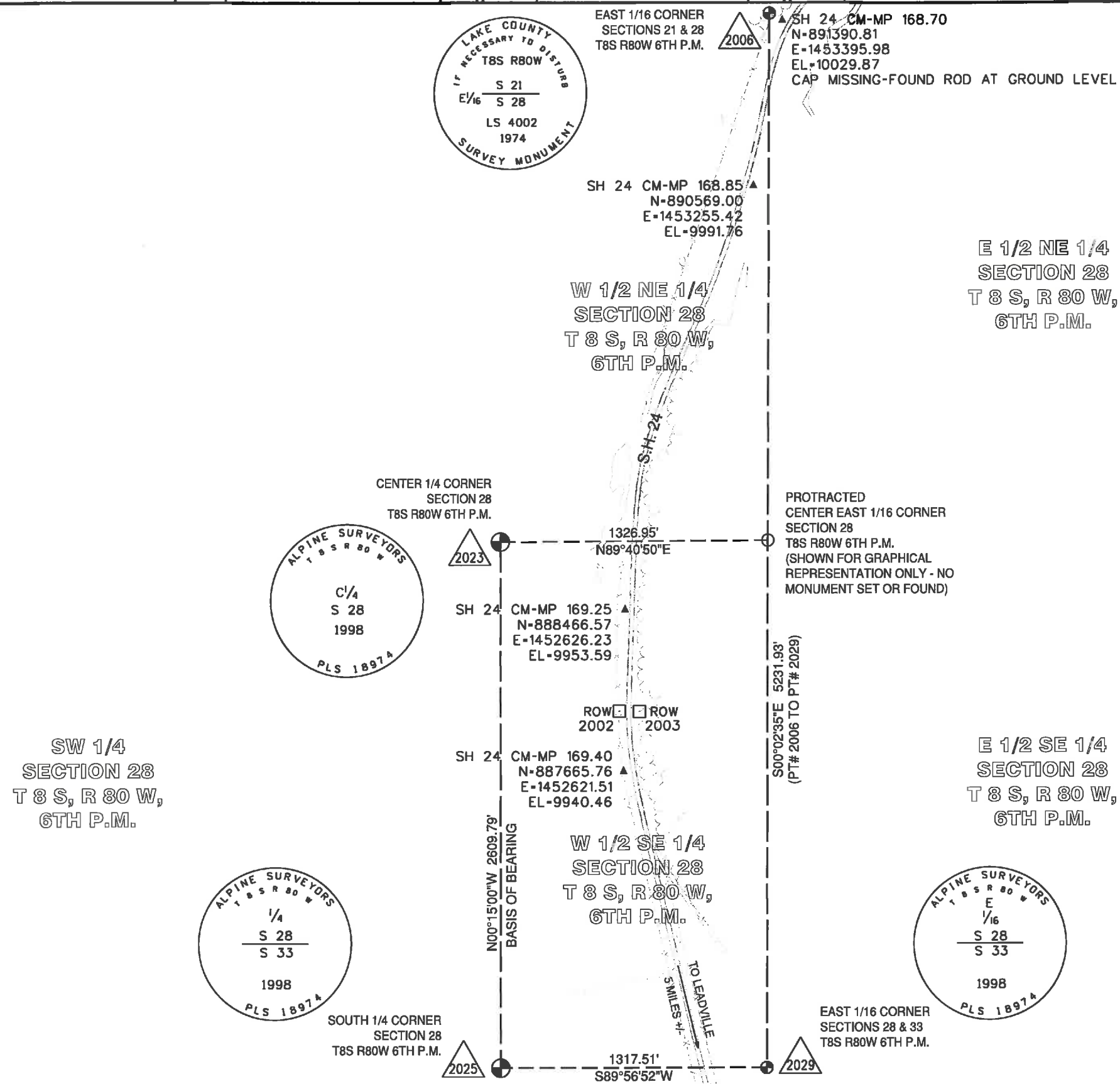
## LSCD PLAN SHEET

Project Number: HPP 0241-058

Project Location: STATE HIGHWAY 24

LAKE COUNTY, COLORADO

Project Code	Last Mod. Date	Subset	Sheet No.
18283	06-20-2012	4.03 of 4.04	4.03



EXISTING WESTERLY RIGHT OF WAY LINE DESCRIPTION:

AN EXISTING RIGHT OF WAY LINE LYING IN THE W 1/2 OF THE NE 1/4, OF SECTION 28, T8S, R80W, OF THE 6TH P.M., LAKE COUNTY, COLORADO, BEING MORE PARTICULARLY DESCRIBED AS FOLLOWS:

COMMENCING AT THE CENTER QUARTER OF SAID SECTION 28; THENCE N45°47'26"E A DISTANCE OF 1097.21 FEET, TO A POINT ON THE WESTERLY LINE OF THE EXISTING STATE HIGHWAY 24 RIGHT OF WAY (JUNE 2012), BEING THE TRUE POINT OF BEGINNING;

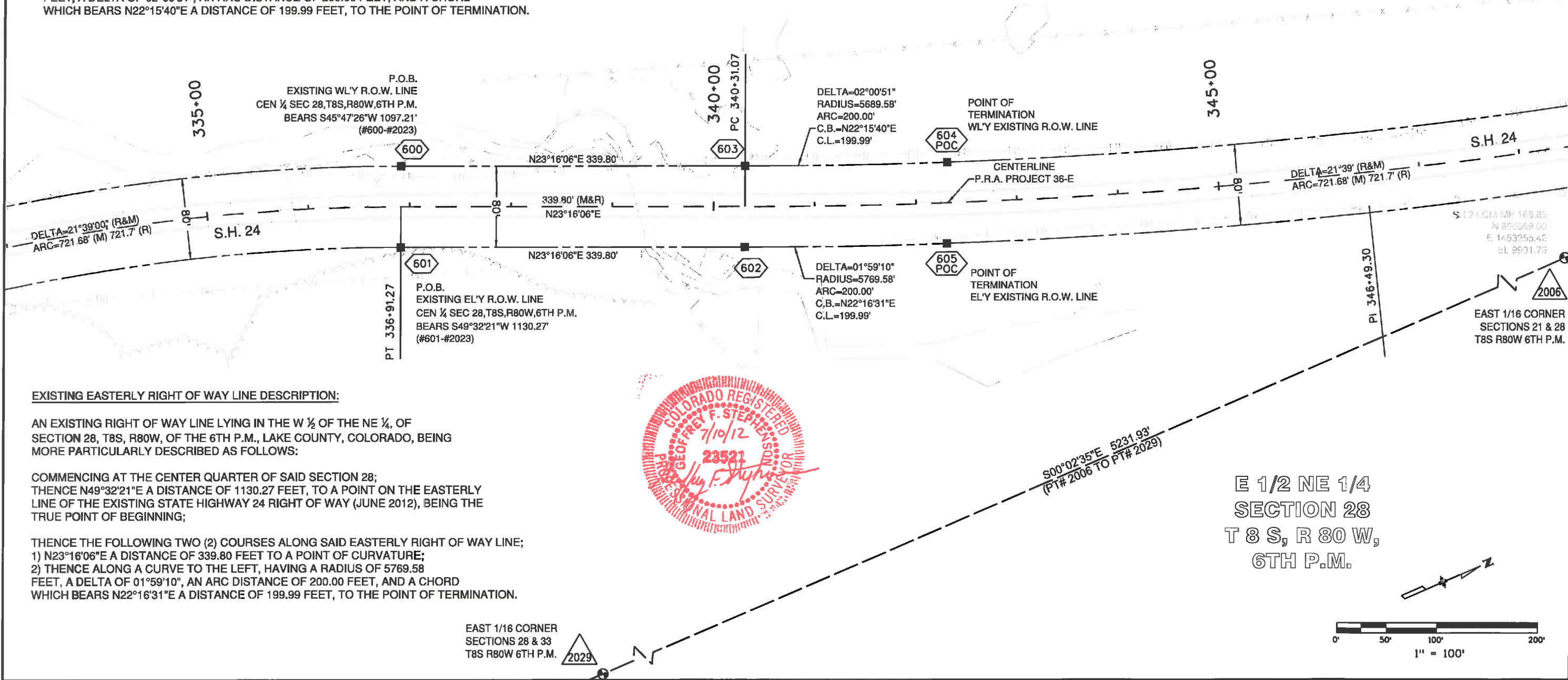
THENCE THE FOLLOWING TWO (2) COURSES ALONG SAID WESTERLY RIGHT OF WAY LINE;  
1) N23°16'06"E A DISTANCE OF 339.80 FEET TO A POINT OF CURVATURE;  
2) THENCE ALONG A CURVE TO THE LEFT, HAVING A RADIUS OF 5689.58 FEET, A DELTA OF 02°00'51", AN ARC DISTANCE OF 200.00 FEET, AND A CHORD WHICH BEARS N22°15'40"E A DISTANCE OF 199.99 FEET, TO THE POINT OF TERMINATION.

W 1/2 NE 1/4  
SECTION 28  
T 8 S, R 80 W,  
6TH P.M.

TABULATION OF R.O.W. MONUMENTS SET - PROJECT SPECIFIC COORDINATES (U.S. FEET)

Points shown on this Tabulation are for the existing right of way of State Highway 24 shown herein.

Point No.	Northing	Easting	Description	Station	Offset
600	889567.75	1452792.85	SET CDOT TYPE 1 ROW MONUMENT	336+91.27	-40.00
601	889536.15	1452866.35	SET CDOT TYPE 1 ROW MONUMENT	336+91.27	40.00
602	889848.31	1453000.58	SET CDOT TYPE 1 ROW MONUMENT	340+31.07	40.00
603	889879.91	1452927.09	SET CDOT TYPE 1 ROW MONUMENT	340+31.07	-40.00
604	890065.01	1453002.85	SET CDOT TYPE 1 ROW MONUMENT	342+32.48	-40.00
605	890033.38	1453076.39	SET CDOT TYPE 1 ROW MONUMENT	342+29.69	40.00



EXISTING EASTERLY RIGHT OF WAY LINE DESCRIPTION:

AN EXISTING RIGHT OF WAY LINE LYING IN THE W 1/2 OF THE NE 1/4, OF SECTION 28, T8S, R80W, OF THE 6TH P.M., LAKE COUNTY, COLORADO, BEING MORE PARTICULARLY DESCRIBED AS FOLLOWS:

COMMENCING AT THE CENTER QUARTER OF SAID SECTION 28; THENCE N49°32'21"E A DISTANCE OF 1130.27 FEET, TO A POINT ON THE EASTERLY LINE OF THE EXISTING STATE HIGHWAY 24 RIGHT OF WAY (JUNE 2012), BEING THE TRUE POINT OF BEGINNING;

THENCE THE FOLLOWING TWO (2) COURSES ALONG SAID EASTERLY RIGHT OF WAY LINE;  
1) N23°16'06"E A DISTANCE OF 339.80 FEET TO A POINT OF CURVATURE;  
2) THENCE ALONG A CURVE TO THE LEFT, HAVING A RADIUS OF 5769.58 FEET, A DELTA OF 01°59'10", AN ARC DISTANCE OF 200.00 FEET, AND A CHORD WHICH BEARS N22°16'31"E A DISTANCE OF 199.99 FEET, TO THE POINT OF TERMINATION.

EAST 1/16 CORNER  
SECTIONS 28 & 33  
T8S R80W 6TH P.M.

E 1/2 NE 1/4  
SECTION 28  
T 8 S, R 80 W,  
6TH P.M.

