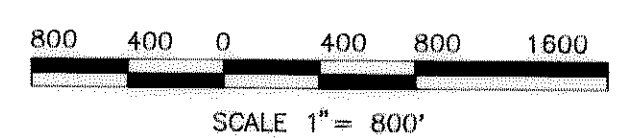


FED. ROAD REGION	DIVISION	PROJECT NUMBER	SHEET NUMBER
	COLO.		OF
		REVISIONS	

PT#	NORTH	EAST	ELEV.	ST. ADD.*	DESCRIPTION
100	1713179.561	3122450.138	5293.54	4.049074	SET TYPE 2A C.D.O.T. MONUMENT WITH 3-1/4" CAP, 6" ROD
100A	1711847.095	3118721.836	5293.54	4.049074 A	SET TYPE 2A C.D.O.T. MONUMENT WITH 3-1/4" CAP, 6" ROD
101	1712092.717	3120657.936	5322.71	4.049067	SET 1-1/2" ALUMINUM CAP ON #5 REBAR
103	1711596.121	3119267.040	5295.88	4.050062	SET TYPE 2A C.D.O.T. MONUMENT WITH 3-1/4" CAP, 6" ROD
104	1712274.245	3122196.349	5295.88	4.050062	SET TYPE 2A C.D.O.T. MONUMENT WITH 3-1/4" CAP, 6" ROD
105	1713735.834	3123217.939	5292.38	4.050060	SET TYPE 2A C.D.O.T. MONUMENT WITH 3-1/4" CAP, 6" ROD
106	1714867.367	3124468.368	5271.17	4.054540	SET TYPE 2A C.D.O.T. MONUMENT WITH 3-1/4" CAP, 6" ROD
107	1715154.512	3125503.252	5254.74	4.054052	SET TYPE 2A C.D.O.T. MONUMENT WITH 3-1/4" CAP, 6" ROD
108	1715355.153	3125206.381	5282.12	4.054053	SET TYPE 2A C.D.O.T. MONUMENT WITH 3-1/4" CAP, 6" ROD
109	1715946.903	3123339.010	5287.00	4.053060 A	SET TYPE 2A C.D.O.T. MONUMENT WITH 3-1/4" CAP, 6" ROD
110	1712532.134	3121370.025	5306.89	4.050085 A	SET TYPE 2A C.D.O.T. MONUMENT WITH 3-1/4" CAP, 6" ROD
112	1715552.374	3126475.020	5289.35	4.055051	SET TYPE 2A C.D.O.T. MONUMENT WITH 3-1/4" CAP, 6" ROD
113	1716301.192	3128274.349	5267.08	4.058044	SET TYPE 2A C.D.O.T. MONUMENT WITH 3-1/4" CAP, 6" ROD
114	1716587.297	3129333.885	5247.72	4.058041	SET TYPE 2A C.D.O.T. MONUMENT WITH 3-1/4" CAP, 6" ROD
115	1716494.333	3130652.959	5250.82	4.057036	SET TYPE 2A C.D.O.T. MONUMENT WITH 3-1/4" CAP, 6" ROD
116	1716517.542	3131269.768	5249.57	4.057035	SET TYPE 2A C.D.O.T. MONUMENT WITH 3-1/4" CAP, 6" ROD
117	1716761.941	3132097.346	5225.81	4.057033 A	SET TYPE 2A C.D.O.T. MONUMENT WITH 3-1/4" CAP, 6" ROD
118	1717197.441	3133700.241	5237.78	4.057030 A	SET TYPE 2A C.D.O.T. MONUMENT WITH 3-1/4" CAP, 6" ROD
119	1717468.490	3134596.692	5251.75	4.058027	SET TYPE 2A C.D.O.T. MONUMENT WITH 3-1/4" CAP, 6" ROD
120	1718158.154	3135406.557	5258.35	4.058026	SET 80# NAIL WITH WASHER
121	1718474.454	3136022.673	5248.10	4.058024	SET TYPE 2A C.D.O.T. MONUMENT WITH 3-1/4" CAP, 6" ROD
122	1718938.291	3136413.102	5233.91	4.061023	SET TYPE 2A C.D.O.T. MONUMENT WITH 3-1/4" CAP, 6" ROD
123	1719498.943	3137651.092	5223.06	4.061019	SET TYPE 2A C.D.O.T. MONUMENT WITH 3-1/4" CAP, 6" ROD
124	1719883.838	3138085.280	5225.51	4.061019 A	SET TYPE 2A C.D.O.T. MONUMENT WITH 3-1/4" CAP, 6" ROD
125	1720504.508	3138934.079	5211.01	4.061016	SET TYPE 2A C.D.O.T. MONUMENT WITH 3-1/4" CAP, 6" ROD
126	1719449.757	3138755.024	5194.20	4.055049	SET #5 REBAR WITH 1-1/2" ALUM. CAP
127	1720985.066	3141902.589	5178.90	4.064008	SET TYPE 2A C.D.O.T. MONUMENT WITH 3-1/4" CAP, 6" ROD
128	1721451.390	3142848.089	5176.55	4.064002	SET TYPE 2A C.D.O.T. MONUMENT WITH 3-1/4" CAP, 6" ROD
200	1713447.052	3123101.340	5270.23	4.052080	SET #5 REBAR WITH 1-1/2" ALUM. CAP
201	1713525.056	3122743.205	5271.68	4.052081 A	SET RAILROAD SPIKE
202	1715983.118	3126804.444	5240.08	4.054054	SET TYPE 2 C.D.O.T. MONUMENT WITH 3-1/4" CAP, 6" ROD
203	1718281.885	3128174.460	5239.71	4.058044 B	SET #5 REBAR WITH 1-1/2" ALUM. CAP
204	1717182.445	3133482.575	5215.23	4.057030 B	SET CHISELED "Y"
205	1719698.788	3136665.509	5195.10	4.061016 A	SET CHISELED "Y"
206	1720416.975	3138786.721	5190.91	4.061019	SET CHISELED "Y"
207	1719473.699	3137976.079	5191.20	4.061019 C	SET 80# NAIL
208	1719912.811	3137636.275	5193.05	4.061019 B	SET 80# NAIL
213	1718733.866	3130740.302	5227.40	4.057036 A	SET RAILROAD SPIKE
214	1718415.280	3130481.128	5228.28	4.057036 B	SET TYPE 2 C.D.O.T. MONUMENT WITH 3-1/4" CAP, 6" ROD
215	1712577.980	3121258.518	5285.44	4.050085	SET TYPE 2 C.D.O.T. MONUMENT WITH 3-1/4" CAP, 6" ROD
216	1712082.530	3121250.784	5291.86	4.049065	SET TYPE 2 C.D.O.T. MONUMENT WITH 3-1/4" CAP, 6" ROD
300	1715559.571	3127180.406	5249.18	4.055049	SET #5 REBAR WITH 1-1/2" ALUM. CAP
301	1715823.755	3128773.630	5248.44	4.055049	SET #5 REBAR WITH 1-1/2" ALUM. CAP
302	1714831.970	3124305.480	5271.81	4.054055	SET #5 REBAR WITH 1-1/2" ALUM. CAP
303	1714528.040	3124211.690	5267.82	4.054055 A	SET #5 REBAR WITH 1-1/2" ALUM. CAP
304	1714245.287	3124052.815	5299.44	4.053055	SET #5 REBAR WITH 1-1/2" ALUM. CAP
305	1714826.521	3124237.355	5253.48	4.054055 B	SET #5 REBAR WITH 1-1/2" ALUM. CAP
306	1714445.099	3123898.314	5253.48	4.054056	SET 80# NAIL WITH WASHER
408	1718874.576	3133824.377	5199.91	4.061028	SET #5 REBAR WITH 1-1/2" ALUM. CAP
409	1719598.105	3134714.875	5195.85	4.061026	SET #5 REBAR WITH 1-1/2" ALUM. CAP
410	1719651.211	3135272.615	5194.47	4.061025	SET #5 REBAR WITH 1-1/2" ALUM. CAP
411	1719993.209	3136045.371	5191.39	4.062023	SET #5 REBAR WITH 1-1/2" ALUM. CAP
412	1720238.406	3137184.147	5190.19	4.062021	SET #5 REBAR WITH 1-1/2" ALUM. CAP
413	1720894.138	3137150.722	5193.27	4.063021	SET #5 REBAR WITH 1-1/2" ALUM. CAP
415	1720816.525	3137220.210	5181.44	4.063019	SET #5 REBAR WITH 1-1/2" ALUM. CAP
416	1721819.480	3136885.577	5172.42	4.064016	SET #5 REBAR WITH 1-1/2" ALUM. CAP
417	1722076.918	3138944.232	5172.42	4.064016 A	SET #5 REBAR WITH 1-1/2" ALUM. CAP

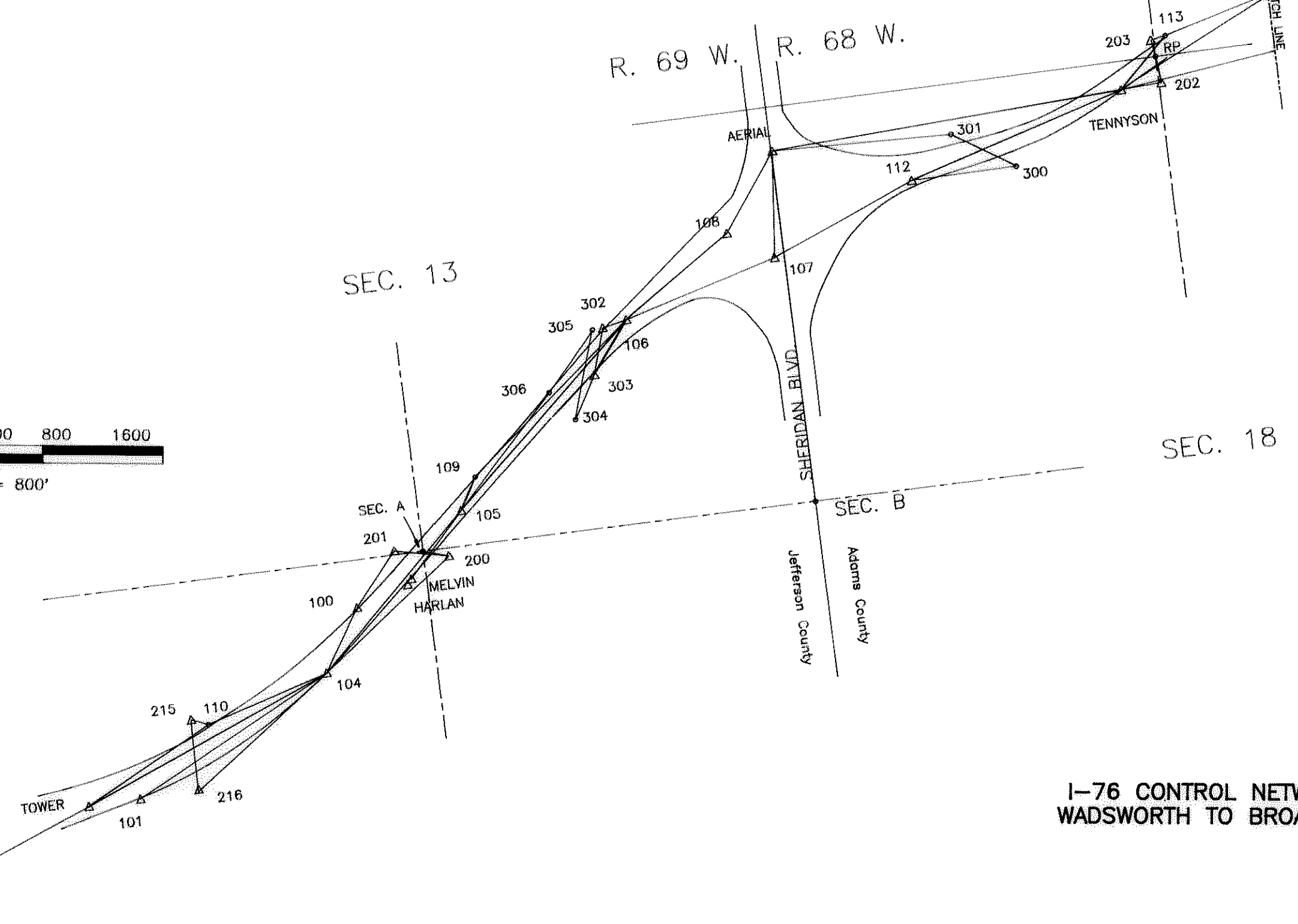
PT#	NORTH	EAST	ELEV.	ST. ADD.*	DESCRIPTION
AERIAL	1715859.929	3129573.507	5257.45	4.055052	SET GPS# 4 TYPE 2A C.D.O.T. MONUMENT WITH 3-1/4" CAP, 6" ROD IN ACCESS COVER
AETNA	1718802.248	3133457.924	5211.91	4.061030	SET #5 REBAR
ALLEN	1739056.033	3125527.666	5175.02	4.081052	FND GPS# 37 DISK SET IN CONCRETE
AMERICAN	1721407.702	3144184.999	5203.58	4.068033	SET #5 REBAR
BANK	1717257.220	313299.438	5222.52	4.057033 B	SET #5 REBAR
BRICK	1717166.363	3132221.014	5222.52	4.057033 B	SET #5 REBAR
CARR	1698830.486	3115094.649	5214.33	4.066084	FND GPS# 12 3" ALUMINUM DISK ON #12 REBAR
CONC	1718527.802	3132776.222	5214.33	4.058031 B	SET HILTY NAIL
GRANT	1737324.347	3144347.338	1.088002		FND GPS# 22 TYPE 2A C.D.O.T. MONUMENT WITH 3-1/4" CAP, 21" ROD IN ACCESS COVER
HARLAN	1713290.522	3122805.362	5213.59	4.052086	SET GPS# 3 TYPE 2A C.D.O.T. MONUMENT WITH 3-1/4" CAP, 6" ROD IN ACCESS COVER
HEADACHE	1717635.588	3132648.217	5213.59	4.058033 A	SET #5 REBAR
HIDDEN	1728637.558	3125568.356	5227.15	4.057030	SET GPS# 72 TYPE 2A C.D.O.T. MONUMENT WITH 3-1/4" CAP, 6" ROD IN ACCESS COVER
ISLAND	1716857.051	3133356.057	5227.15	4.057030	SET GPS# 6 TYPE 2A C.D.O.T. MONUMENT WITH 3-1/4" CAP, 6" ROD IN ACCESS COVER
MELVIN	1713325.080	3122835.539	5296.03	4.052080	SET GPS# 2 TYPE 2A C.D.O.T. MONUMENT WITH 3-1/4" CAP, 6" ROD IN ACCESS COVER
McDonnell	1696058.881	3140329.963	5212.21	4.057012	FND GPS# 52 STAINLESS STEEL ROD WITH ACCESS COVER
OGRE	1718220.235	3132821.122	5212.21	4.058031 A	SET #5 REBAR
OVERPASS	1720589.576	3141252.154	5203.08	4.063080	SET GPS# 7 TYPE 2A C.D.O.T. MONUMENT WITH 3-1/4" CAP, 6" ROD IN ACCESS COVER
RP	1716171.358	3128193.164	5203.08	4.058044 C	FND 3-1/2" ALUM. CAP POSSIBLE S. 1/4 SEC. 7, T. 3 S., R. 68 W. MARKINGS ILLEGIBLE
SEC. A	1713498.373	3122932.889			FND 3" ALUM. CAP MARKED C. 1/4 SEC. 13, T. 3 S., R. 69 W. LS#23519
SEC. B	1713506.107	3125575.238			FND 2" X 2" PIPE WITH #4 REBAR INSIDE IT
SEC. C	1718854.418	3138732.144			FND 3-1/2" ALUM. CAP MARKED S. 1/4 SEC. 8, T. 3 S., R. 68 W. ADAMS COUNTY
SEC. D	1716200.630	3133417.044			FND #4 REBAR POSSIBLE C. 1/4 SEC. 8, T. 3 S., R. 68 W.
SEC. E	1718838.574	3133402.474			SET GPS# 20 TYPE 5 C.D.O.T. MONUMENT
SLOANS	1698850.905	3125895.356	5266.90	4.019052	SET GPS# 5 TYPE 2A C.D.O.T. MONUMENT WITH 3-1/4" CAP, 6" ROD IN ACCESS COVER
TENNYSON	1715877.527	3127936.835	5328.62	4.049068	SET GPS# 1 TYPE 2A C.D.O.T. MONUMENT WITH 3-1/4" CAP, 6" ROD IN ACCESS COVER
TOWER	1712065.552	3120509.700	5232.35	4.058031	SET #5 REBAR
TRESSLE	1718240.716	3132629.986	5209.32	4.057033 A	SET #4 REBAR
TROLL	1716743.150	3131949.810	5209.32	4.057033 A	SET #4 REBAR
WADSWORTH	1711339.892	3119344.441	5209.32	4.049078	FND GPS# 17 TYPE 2A C.D.O.T. MONUMENT WITH 3-1/4" CAP, 15" ROD IN ACCESS COVER
ZBS1026	1724623.485	3146947.223	1.069007		FND GPS# 26 TYPE 2A C.D.O.T. MONUMENT WITH 3-1/4" CAP, 6" ROD IN ACCESS COVER



BASIS OF BEARING:  
 BASIS OF BEARINGS IS GRID NORTH AS BASED UPON COLORADO STATE PLANE COORDINATE SYSTEM OF 1983 (1991) CENTRAL ZONE. GRID BEARING BETWEEN COLORADO CONTROL POINT AND ISLAND BEARING BETWEEN COLORADO CONTROL POINT AND TOWER IS 118° 10' 00". MONUMENT WITH 3-1/4" CAP, 6" ROD PLACED IN AN ALUMINUM ACCESS COVER SET ON TOP OF 6" ALUMINUM DISK. MONUMENT WITH 3-1/4" CAP, 6" ROD PLACED IN AN ALUMINUM ACCESS COVER SET ON TOP OF 6" ALUMINUM DISK. MONUMENT WITH 3-1/4" CAP, 6" ROD PLACED IN AN ALUMINUM ACCESS COVER SET IN A CONCRETE TRAFFIC ISLAND AT THE SOUTHWEST CORNER OF 1-76 AND FEDERAL, STAMPED 4.057036.

- NOTES:
- NOTICE: ACCORDING TO COLORADO LAW YOU MUST COMMENCE ANY LEGAL ACTION BASED UPON ANY DEFECT IN THIS SURVEY WITHIN THREE YEARS AFTER YOU FIRST DISCOVER SUCH DEFECT. IN NO EVENT, MAY ANY ACTION BE BASED UPON ANY DEFECT IN THIS SURVEY COMMENCED MORE THAN TEN YEARS FROM THE DATE OF THE CERTIFICATION SHOWN HEREON.
  - FOUND MONUMENTS IDENTIFIED AS RP AND SEC A THROUGH SEC E ON THIS DIAGRAM, WERE TIED FOR REFERENCE AND WERE NOT VERIFIED BY SECTION BREAKDOWN.
  - NO WARRANTY IS IMPLIED OR EXPRESSED UNLESS THIS SHEET BEARS THE ORIGINAL SIGNATURE AND SEAL OF THE PREPARER.
  - ALL COORDINATES LISTED ARE MODIFIED COLORADO STATE PLANE COORDINATES 1983(1991) CENTRAL ZONE. BASED ON A PROJECT COMBINED MEAN FACTOR OF 0.989759688. CALCULATIONS ARE BASED ON THE US SURVEY FOOT.
  - THIS SURVEY WAS PERFORMED BETWEEN 1 AUGUST 1992 AND 1 FEBRUARY 1993.
  - VERTICAL DATUM IS BASED ON USGS BENCHMARK L412 WITH AN ELEVATION OF 5315.71 FEET(1929 DATUM).
  - ROADWAY SHOWN HEREON IS FOR REFERENCE ONLY AND IN NO WAY SHOULD BE RELIED UPON.
  - FIELD SURVEY CONTROL PRECISION MEETS OR EXCEEDS CDOT TYPE A SURVEY REQUIREMENTS.
  - PRIMARY CONTROL IS DENOTED BY 100 SERIES NUMBERS, ESTABLISHED UTILIZING GPS. ALL OTHER POINTS ARE SECONDARY CONTROL, ESTABLISHED BY CONVENTIONAL METHODS.
  - \* DENOTES: STREET ADDRESS AS STAMPED ON CAP.

△ WADSWORTH



**1-76 CONTROL NETWORK  
WADSWORTH TO BROADWAY**

Department of Transportation - State of Colorado  
 SURVEY CONTROL DIAGRAM SHEET 1 OF 2  
 I(CX)076-1(159)  
 Prepared by Kelly Surveying Associates, Inc.  
 In Sections 3, 7, 8, 9, & 18, T. 3 S., R. 68 W., AND  
 Sections 13 & 14, T. 3 S., R. 69 W., 6th P.M.

**FILING CERTIFICATE**  
 DEPOSITED THIS 20th DAY OF May, 1996  
 AT 10:30 A.M. IN BOOK 30 OF THE  
 COUNTY SURVEYOR'S LAND SURVEY/RIGHT-OF-WAY SURVEYS AT  
 PAGE 912, RECEPTION NUMBER 96-845

COUNTY SURVEYOR  
 DEPUTY COUNTY SURVEYOR

**SURVEYOR CERTIFICATE (FIELD)**  
 CONTROL SURVEY AND MONUMENTATION WAS DONE UNDER SUPERVISION AND CHECKING.  
 NAME *Dennis M. Kelly*  
 DATE 6-20-94

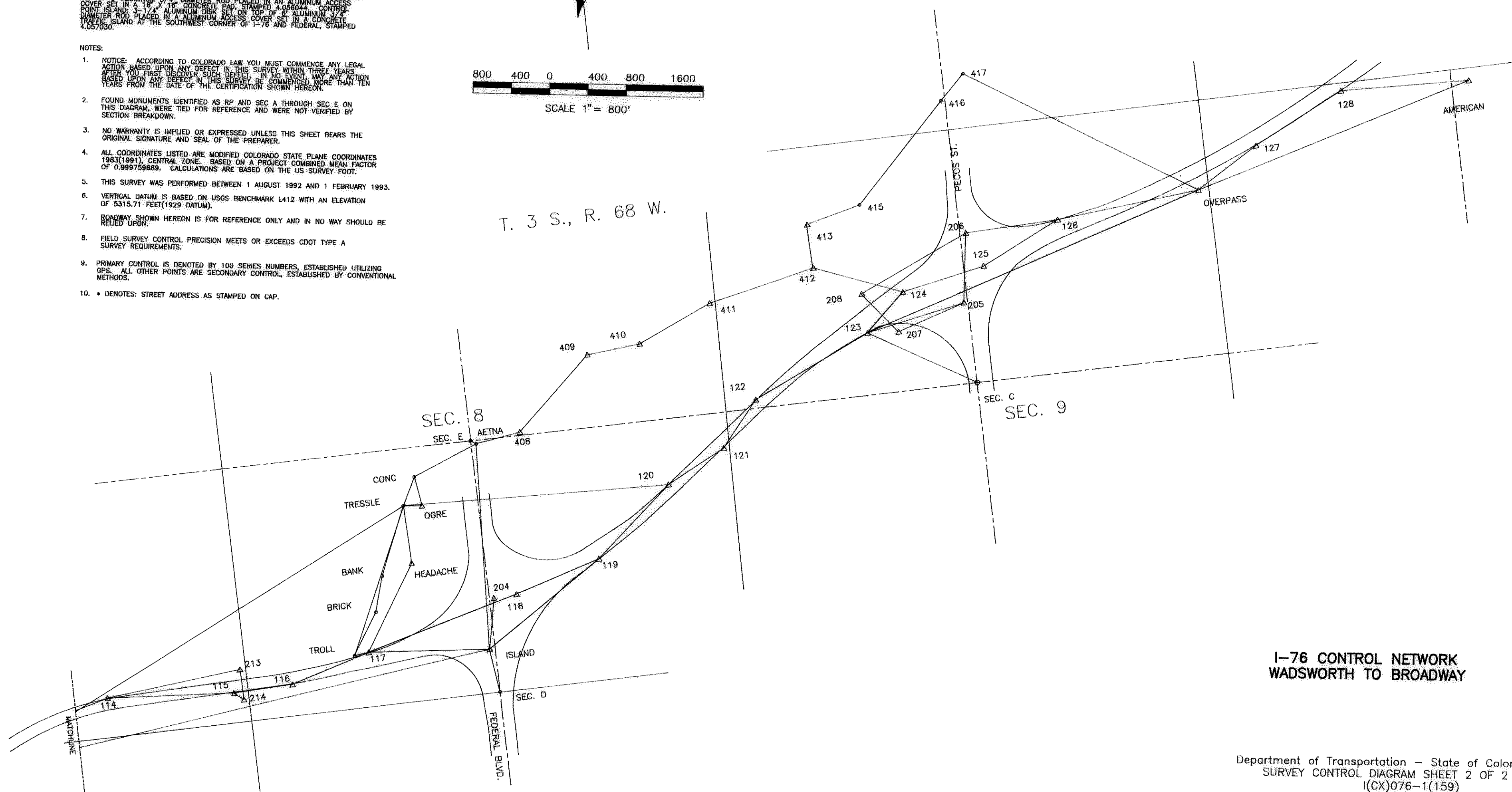
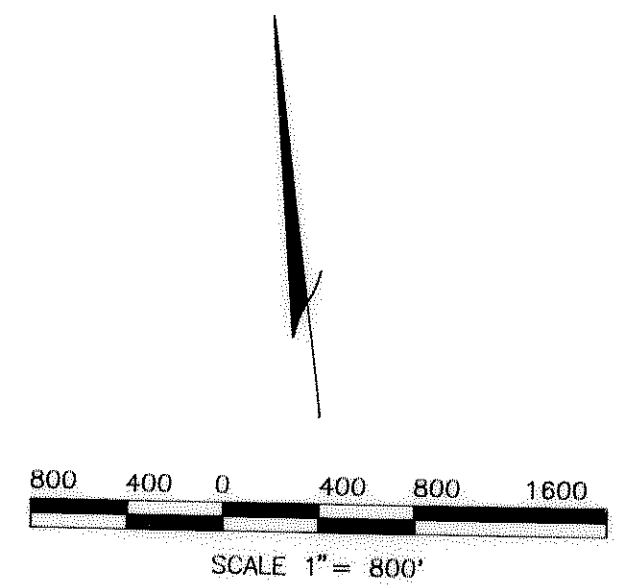
COLORADO REGISTERED  
 DIANE M. KELLY  
 P.L.S. NO. 25951  
 25951

SUBAGCOUNT 91148

FED. ROAD REGION	DIVISION	PROJECT NUMBER	SHEET NUMBER
	COLO.		OF
		REVISIONS	

**BASIS OF BEARING:**  
 BASIS OF BEARINGS IS GRID NORTH AS BASED UPON COLORADO STATE PLANE COORDINATE SYSTEM OF 1983 (1991), CENTRAL ZONE. GRID BEARING BETWEEN GPS CONTROL POINT TENNYSON AND ISLAND BEARS. GRID BEARING BETWEEN TENNYSON AND 17/8" ALUMINUM DISK SET 14' US WITH THE CONTROL SURFACE ON TOP OF 1" ALUMINUM 3/4" DIAMETER ROD PLACED IN AN ALUMINUM ACCESS COVER SET IN A 16" x 16" CONCRETE PAD STAMPED 409644. CONTROL POINT ISLAND IS 17/8" ALUMINUM DISK SET ON TOP OF 1" ALUMINUM 3/4" DIAMETER ROD PLACED IN AN ALUMINUM ACCESS COVER SET IN A CONCRETE PAD ISLAND AT THE SOUTHWEST CORNER OF 1-78 AND FEDERAL, STAMPED 405730.

- NOTES:**
1. NOTICE: ACCORDING TO COLORADO LAW YOU MUST COMMENCE ANY LEGAL ACTION BASED UPON ANY DEFECT IN THIS SURVEY WITHIN THREE YEARS AFTER YOU FIRST DISCOVER SUCH DEFECT. IN NO EVENT, WAY, OR ACTION BASED UPON ANY DEFECT IN THIS SURVEY BE COMMENCED MORE THAN TEN YEARS FROM THE DATE OF THE CERTIFICATION SHOWN HEREON.
  2. FOUND MONUMENTS IDENTIFIED AS RP AND SEC A THROUGH SEC E ON THIS DIAGRAM, WERE TIED FOR REFERENCE AND WERE NOT VERIFIED BY SECTION BREAKDOWN.
  3. NO WARRANTY IS IMPLIED OR EXPRESSED UNLESS THIS SHEET BEARS THE ORIGINAL SIGNATURE AND SEAL OF THE PREPARER.
  4. ALL COORDINATES LISTED ARE MODIFIED COLORADO STATE PLANE COORDINATES 1983 (1991), CENTRAL ZONE. BASED ON A PROJECT COMBINED MEAN FACTOR OF 0.999759689. CALCULATIONS ARE BASED ON THE US SURVEY FOOT.
  5. THIS SURVEY WAS PERFORMED BETWEEN 1 AUGUST 1992 AND 1 FEBRUARY 1993.
  6. VERTICAL DATUM IS BASED ON USGS BENCHMARK L412 WITH AN ELEVATION OF 5315.71 FEET (1929 DATUM).
  7. ROADWAY SHOWN HEREON IS FOR REFERENCE ONLY AND IN NO WAY SHOULD BE RELIED UPON.
  8. FIELD SURVEY CONTROL PRECISION MEETS OR EXCEEDS CDOT TYPE A SURVEY REQUIREMENTS.
  9. PRIMARY CONTROL IS DENOTED BY 100 SERIES NUMBERS, ESTABLISHED UTILIZING GPS. ALL OTHER POINTS ARE SECONDARY CONTROL, ESTABLISHED BY CONVENTIONAL METHODS.
  10. \* DENOTES: STREET ADDRESS AS STAMPED ON CAP.



SUBACCOUNT 91148

**I-76 CONTROL NETWORK  
 WADSWORTH TO BROADWAY**

Department of Transportation - State of Colorado  
 SURVEY CONTROL DIAGRAM SHEET 2 OF 2  
 I(CX)076-1(159)  
 Adams County & Jefferson County  
 Prepared by Kelly Surveying Associates, Inc.  
 in Sections 3, 7, 8, 9, & 18, T. 3 S., R. 68 W., AND  
 Sections 13 & 14, T. 3 S., R. 69 W., 6th P.M.

**FILING CERTIFICATE**  
 DEPOSITED THIS \_\_\_\_\_ DAY OF \_\_\_\_\_, 19\_\_\_\_  
 AT \_\_\_\_\_ M., IN BOOK \_\_\_\_\_ OF THE  
 COUNTY SURVEYOR'S LAND SURVEY/RIGHT-OF-WAY SURVEYS AT  
 PAGE \_\_\_\_\_, RECEPTION NUMBER \_\_\_\_\_  
 COUNTY SURVEYOR \_\_\_\_\_  
 BY DEPUTY COUNTY SURVEYOR \_\_\_\_\_

**SURVEYOR CERTIFICATE (FIELD)**  
 CONTROL SURVEY AND MONUMENTATION WAS DONE UNDER  
 SUPERVISION AND CHECKING.  
 NAME Dennis M. Kelly  
 DATE 6-20-94

