

FEDERAL ROAD REGION NO.	DIVISION	PROJ. NO.	SHEET NO.	TOTAL SHEETS
9	COLORADO	I-25-3(27)251	36	

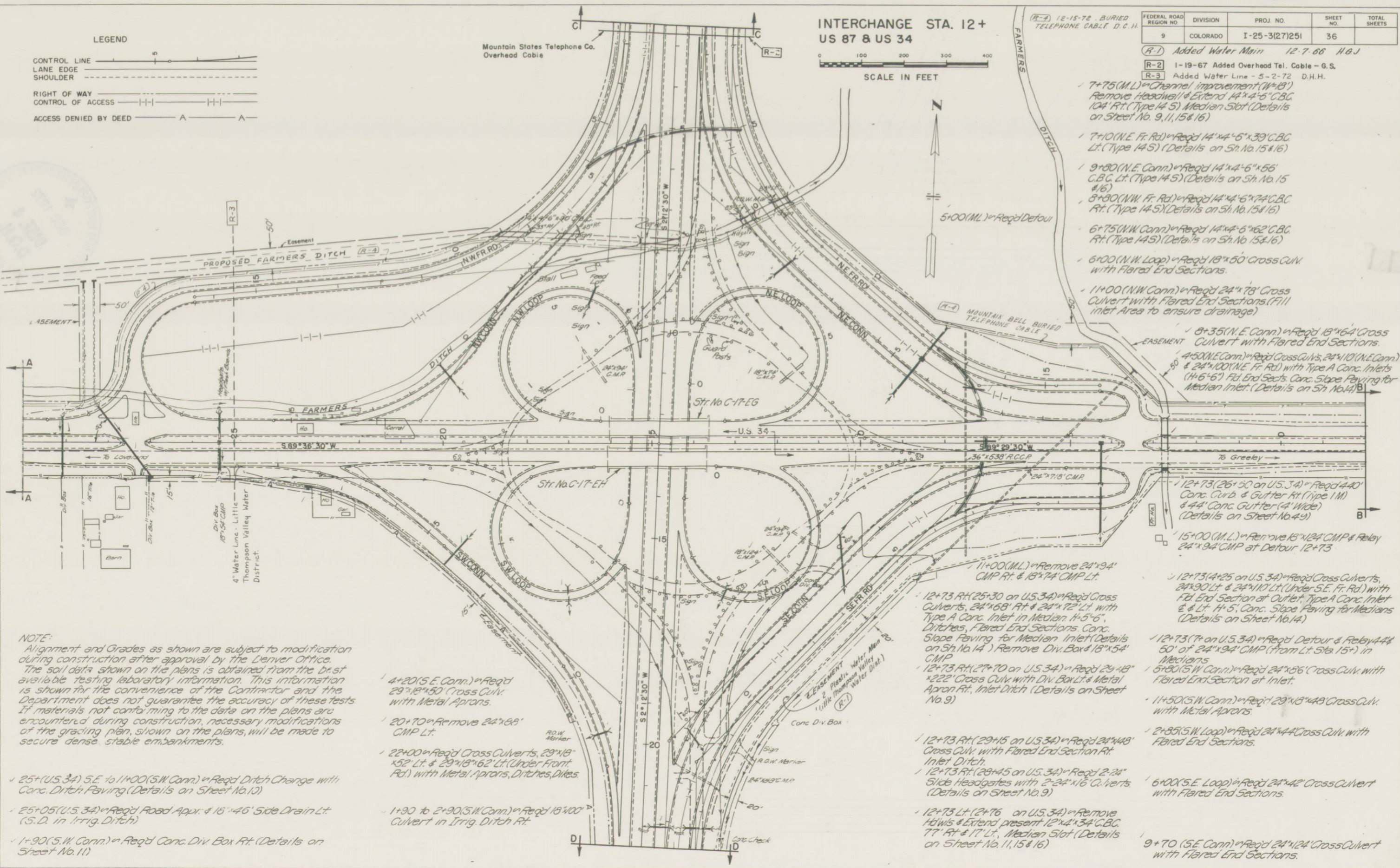
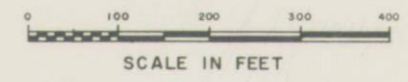
- (R-1) Added Water Main 12-7-66 H.G.J.
- (R-2) 1-19-67 Added Overhead Tel. Cable - G.S.
- (R-3) Added Water Line - 5-2-72 D.H.H.

- 7+75 (M.L.)^o Channel improvement (W=18') Remove Headwall & Extend 14'x4'-5" C.B.C. 104' Rt. (Type 14.5) Median Slot (Details on Sheet No. 9, 11, 15 & 16)
- 7+10 (N.E. Fr. Rd.)^o Reqd 14'x4'-5" x 39' C.B.C. Lt. (Type 14.5) (Details on Sh. No. 15 & 16)
- 9+80 (N.E. Conn.)^o Reqd 14'x4'-6" x 55' C.B.C. Lt. (Type 14.5) (Details on Sh. No. 15 & 16)
- 8+80 (N.W. Fr. Rd.)^o Reqd 14'x4'-6" x 74' C.B.C. Rt. (Type 14.5) (Details on Sh. No. 15 & 16)
- 6+75 (N.W. Conn.)^o Reqd 14'x4'-6" x 62' C.B.C. Rt. (Type 14.5) (Details on Sh. No. 15 & 16)
- 6+00 (N.W. Loop)^o Reqd 18'x50' Cross Culv. with Flared End Sections.
- 11+00 (N.W. Conn.)^o Reqd 24'x78' Cross Culvert with Flared End Sections (Fill inlet Area to ensure drainage)

- 8+35 (N.E. Conn.)^o Reqd 18'x64' Cross Culvert with Flared End Sections.
- 4+50 (N.E. Conn.)^o Reqd Cross Culv's, 24'x110' (N.E. Conn.) & 24'x100' (N.E. Fr. Rd.) with Type A Conc. Inlets (H=6'-6") Fl. End Sects. Conc. Slope Paving for Median Inlet. (Details on Sh. No. 4)
- 12+73 (26+50 on U.S. 34)^o Reqd 4'x40' Conc. Gurb. & Gutter Rt. (Type 1M) & 4'x4' Conc. Gutter (4' Wide) (Details on Sheet No. 4.9)
- 15+00 (M.L.)^o Remove 18'x124' CMP & Relay 24'x94' CMP at Detour 12+73

- 12+73 (4+25 on U.S. 34)^o Reqd Cross Culverts, 24'x90' Lt. & 24'x110' Lt. (Under S.E. Fr. Rd.) with Fl. End Section at Outlet, Type A Conc. Inlet & Lt. H=5', Conc. Slope Paving for Medians (Details on Sheet No. 14)
- 12+73 (7+ on U.S. 34)^o Reqd Detour & Relay 4'x4' 50' of 24'x94' CMP (From Lt. Sta. 15+) in Medians
- 5+80 (S.W. Conn.)^o Reqd 24'x86' Cross Culv. with Flared End Section at Inlet.
- 11+50 (S.W. Conn.)^o Reqd 29'x18'x48' Cross Culv. with Metal Aprons.
- 2+85 (S.W. Loop)^o Reqd 24'x44' Cross Culv. with Flared End Sections.
- 6+00 (S.E. Loop)^o Reqd 24'x42' Cross Culvert with Flared End Sections.
- 9+70 (S.E. Conn.)^o Reqd 24'x124' Cross Culvert with Flared End Sections.

INTERCHANGE STA. 12+ US 87 & US 34



LEGEND

- CONTROL LINE ————
- LANE EDGE ————
- SHOULDER ————
- RIGHT OF WAY ————
- CONTROL OF ACCESS ————
- ACCESS DENIED BY DEED ————

NOTE:
Alignment and Grades as shown are subject to modification during construction after approval by the Denver Office. The soil data shown on the plans is obtained from the best available testing laboratory information. This information is shown for the convenience of the Contractor and the Department does not guarantee the accuracy of these tests. If materials not conforming to the data on the plans are encountered during construction, necessary modifications of the grading plan, shown on the plans, will be made to secure dense stable embankments.

- 25+ (U.S. 34) S.E. to 11+00 (S.W. Conn.)^o Reqd Ditch Change with Conc. Ditch Paving (Details on Sheet No. 10)
- 25+05 (U.S. 34)^o Reqd Road Appr. & 15'x46' Side Drain Lt. (S.D. in Irrig. Ditch)
- 1+90 (S.W. Conn.)^o Reqd Conc. Div. Box Rt. (Details on Sheet No. 11)

- 4+20 (S.E. Conn.)^o Reqd 29'x18'x50' Cross Culv. with Metal Aprons.
- 20+70^o Remove 24'x68' CMP Lt.
- 22+00^o Reqd Cross Culverts, 29'x18'x52' Lt. & 29'x18'x62' Lt. (Under Front Rd.) with Metal Aprons, Ditches, Dikes
- 1+90 to 2+90 (S.W. Conn.)^o Reqd 18'x400' Culvert in Irrig. Ditch Rt.

- 12+73 Rt. (25+30 on U.S. 34)^o Reqd Cross Culverts, 24'x68' Rt. & 24'x72' Lt. with Type A Conc. Inlet in Median H=5'-6", Ditches, Flared End Sections, Conc. Slope Paving for Median Inlet (Details on Sh. No. 14) Remove Div. Box & 18'x54' CMP
- 12+73 Rt. (27+70 on U.S. 34)^o Reqd 29'x18'x22' Cross Culv. with Div. Box Lt. & Metal Apron Rt., Inlet Ditch (Details on Sheet No. 9)
- 12+73 Rt. (29+15 on U.S. 34)^o Reqd 24'x48' Cross Culv. with Flared End Section Rt. Inlet Ditch
- 12+73 Rt. (28+45 on U.S. 34)^o Reqd 2'x24' Side Headgates with 2'x24'x16' Culverts (Details on Sheet No. 9)
- 12+73 Lt. (24+76 on U.S. 34)^o Remove 16'x15' & Extend present 12'x4'x34' C.B.C. 77' Rt. & 17' Lt., Median Slot (Details on Sheet No. 11, 15 & 16)

N.E. 1/4 SEC. 15
T. 5 N. R. 68 W.

FED. ROAD DIV. NO.	DIST.	PROJ. NO.	SHEET NO.	TOTAL SHEETS
9	COLO.	I-25-3(27)251	37	

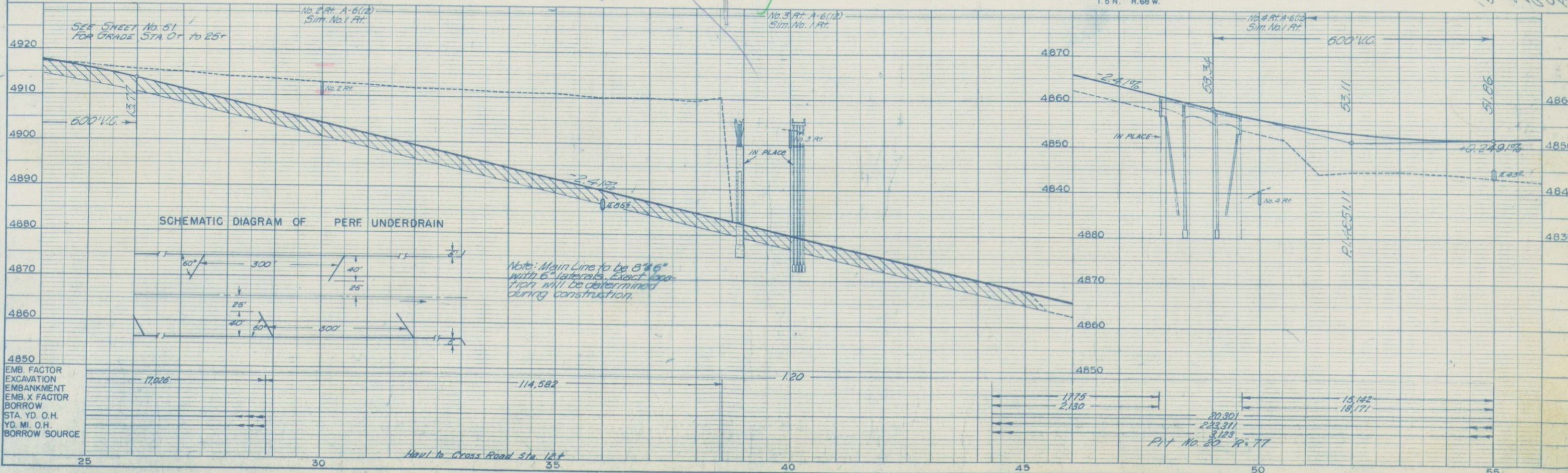
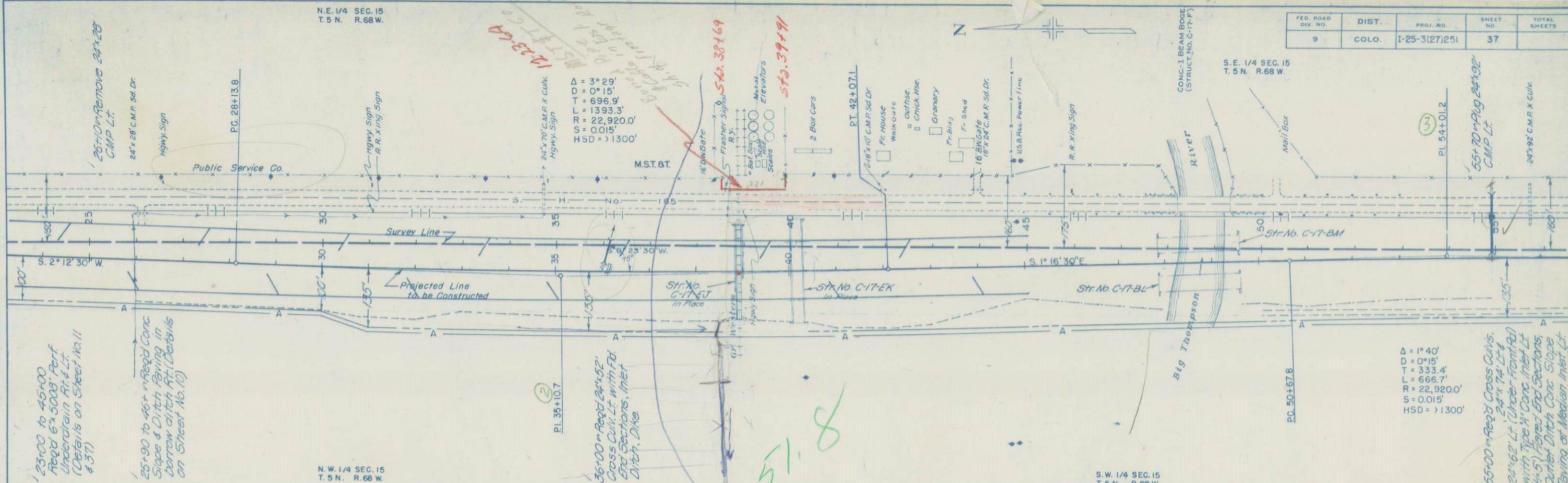
S.E. 1/4 SEC. 15
T. 5 N. R. 68 W.

N.W. 1/4 SEC. 15
T. 5 N. R. 68 W.

S.W. 1/4 SEC. 15
T. 5 N. R. 68 W.

DATE	BY	REVISION

DATE	BY	REVISION

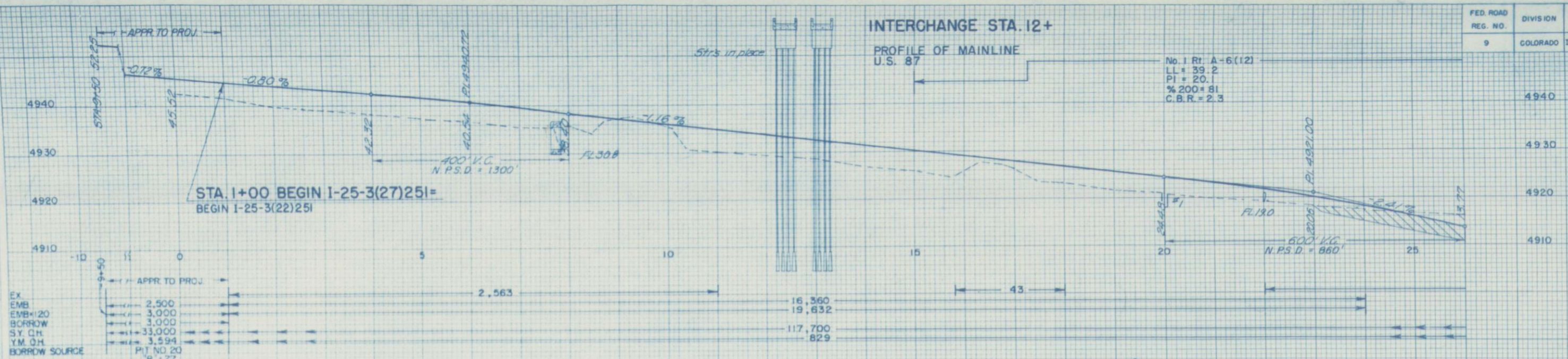


EMB. FACTOR	EXCAVATION	EMBANKMENT	EMB. X FACTOR	BORROW	STA. YD. O.H.	YD. MI. O.H.	BORROW SOURCE

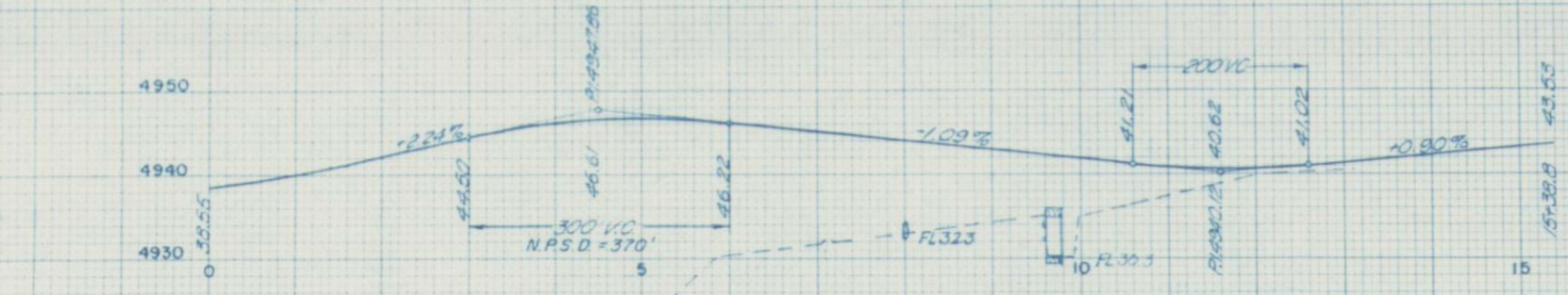
INTERCHANGE STA. 12+

PROFILE OF MAINLINE
U.S. 87

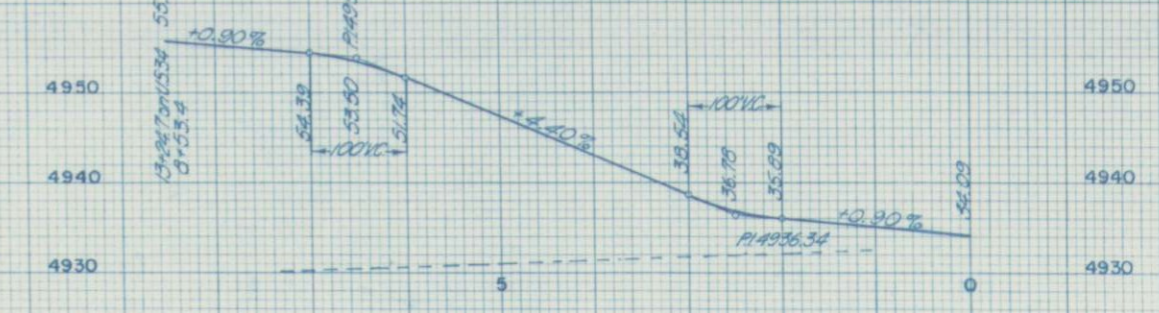
No. 1 Rt. A-6(12)
LL = 39.2
PI = 20.1
% 200 = 81
C.B.R. = 2.3



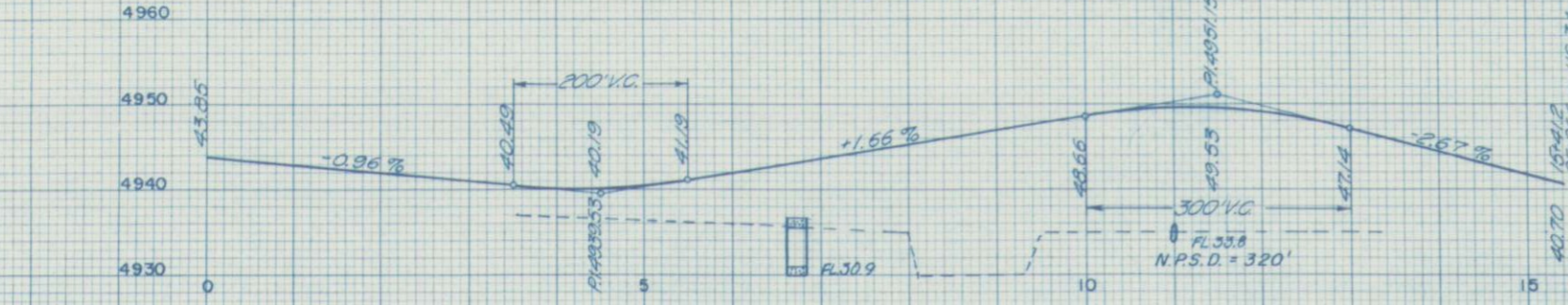
N.E. CONNECTION



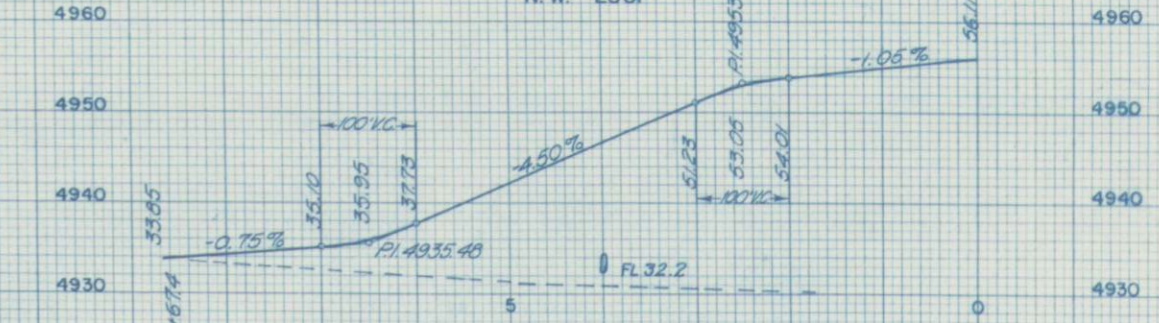
N.E. LOOP



N.W. CONNECTION



N.W. LOOP



FINAL SURVEY
PLANNED
NOTE BOOK
NO.

ORIGINAL SURVEY
PLANNED
NOTE BOOK
NO.

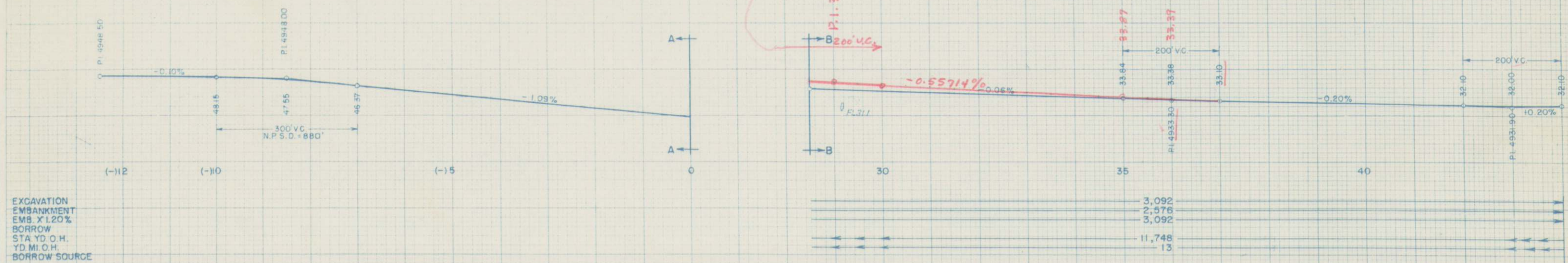
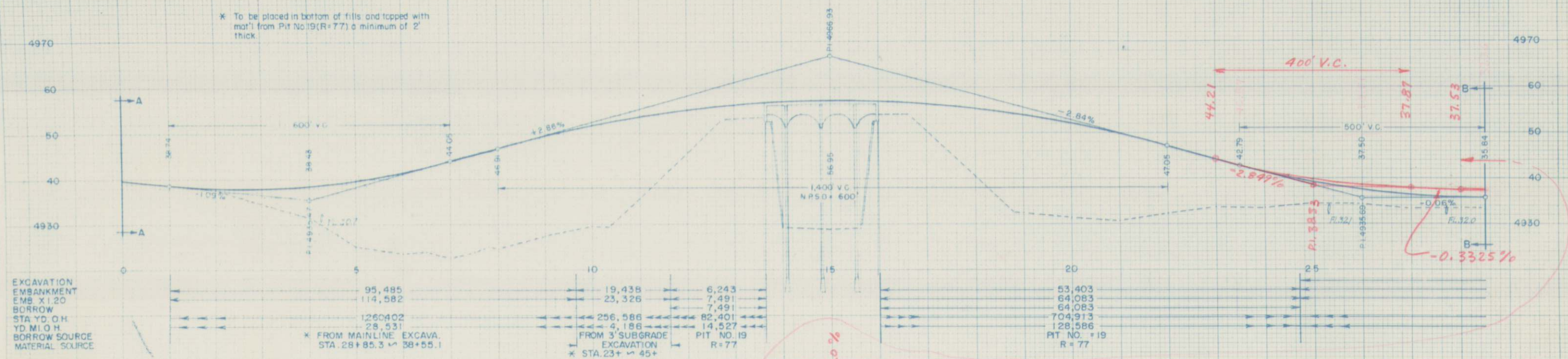
PROFILE OF INTERCHANGE STA. 12+

CROSS ROAD-US 34

FED. ROAD REG. NO.	DIVISION	PROJECT NO.	SHEET NO.
9	COLORADO	125-3(27)251	52

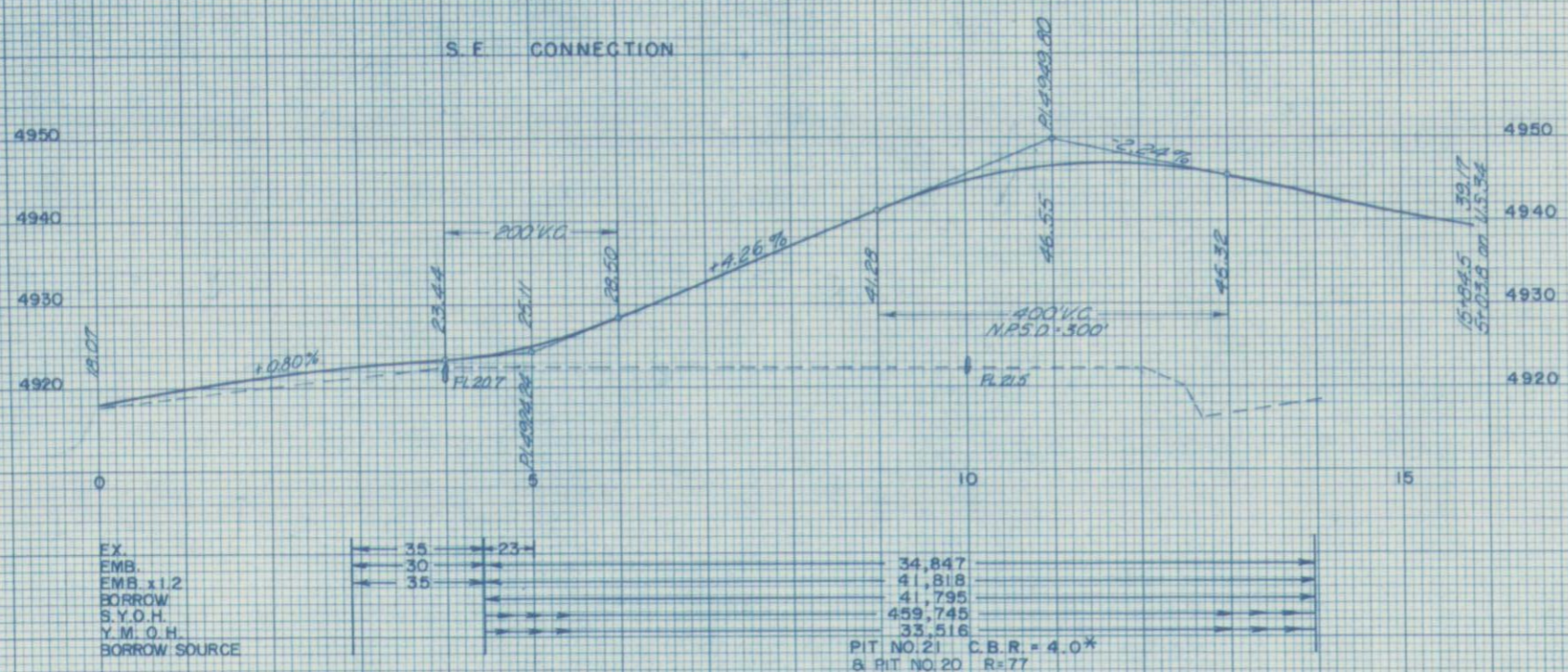
GRADE CHANGE IN RED 6-8-62 R.F.

* To be placed in bottom of fills and topped with mat'l from Pit No.19(R=77) a minimum of 2' thick.

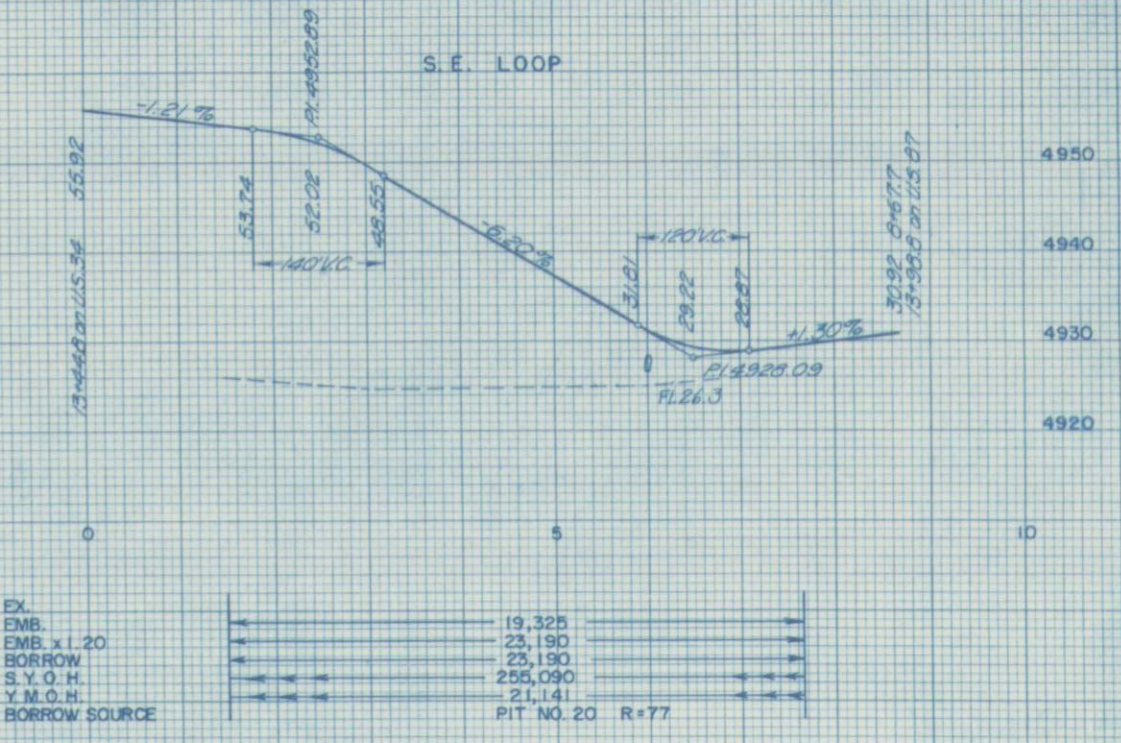


INTERCHANGE STA. 12+

S. E. CONNECTION



S. E. LOOP



* To be placed in bottom of fills and topped with mat'l from Pit No. 20 (R=77) a minimum of 2' thick

S. W. CONNECTION



S. W. LOOP



DATE: _____
BY: _____
FINAL SURVEY: _____
NO. _____

DATE: _____
BY: _____
ORIGINAL SURVEY: _____
NO. _____

FED. ROAD REG. NO.	DIVISION	PROJECT NO.	SHEET NO.
9	COLORADO	I 25-3(27)251	54

INTERCHANGE, STA. 12+

NORTHWEST FRONTAGE ROAD

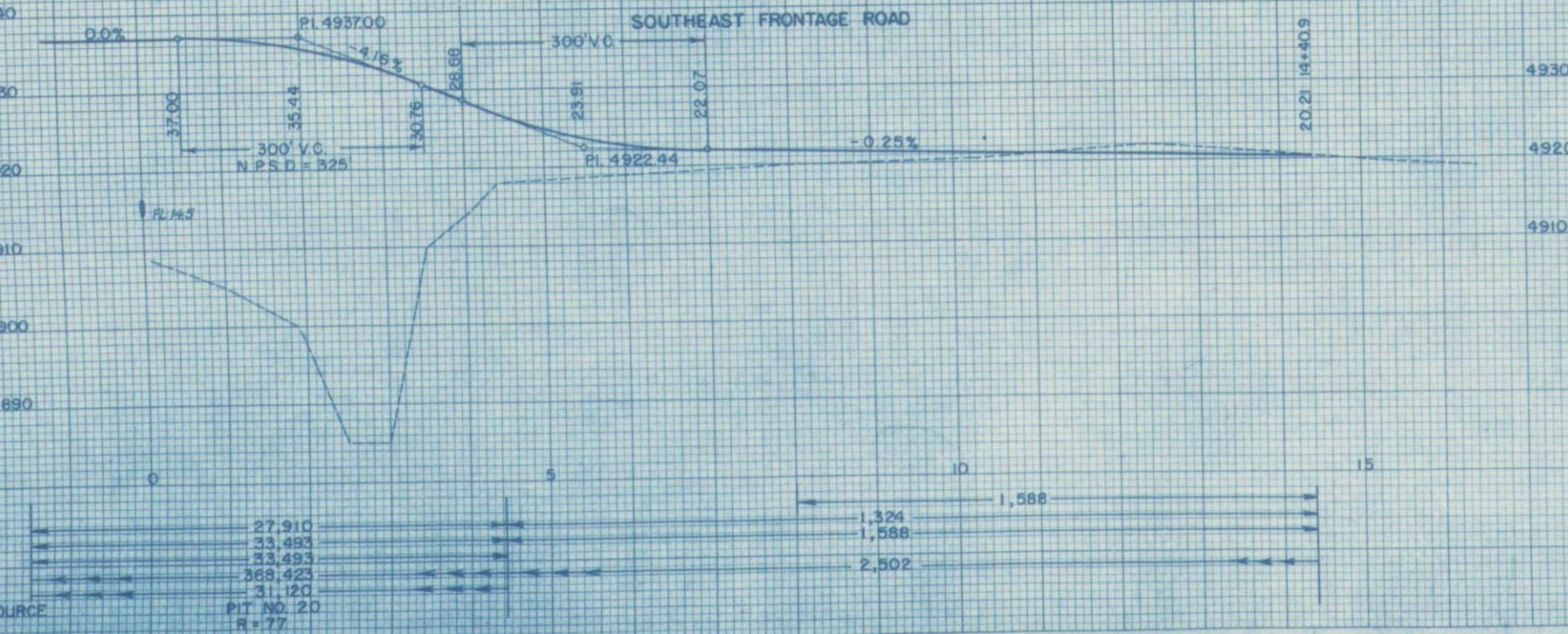
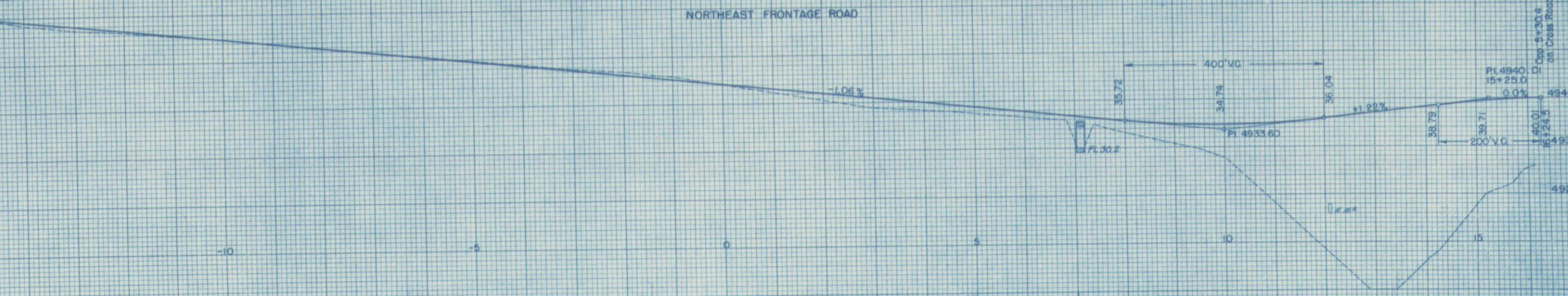
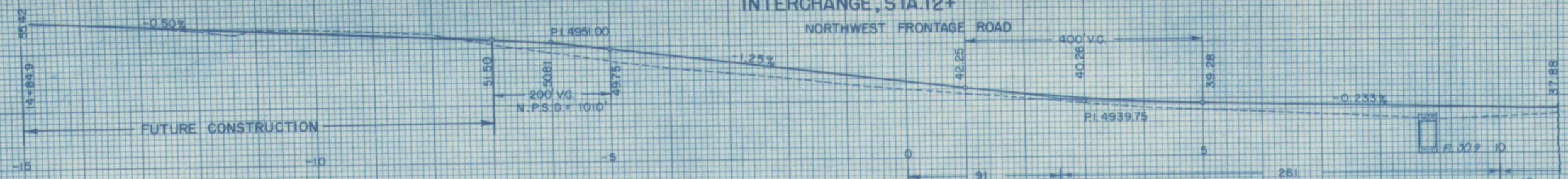
NORTHEAST FRONTAGE ROAD

SOUTHEAST FRONTAGE ROAD

EX
EMB
EMB x 1.20
BORROW
S.Y.O.H.
Y.M.O.H.
BORROW SOURCE

EX
EMB
EMB x 1.20
BORROW
S.Y.O.H.
Y.M.O.H.
BORROW SOURCE

EX
EMB
EMB x 1.20
BORROW
S.Y.O.H.
Y.M.O.H.
BORROW SOURCE



* HAUL INCLUDED IN N.W. CONNECTION

39,078
46,893
46,850
515,350
40,999
PIT NO. 20
R=77

PIT NO. 20
R=77

FINAL SURVEY PLOTTED
NOTE BOOK NO. []
DATE []

ORIGINAL SURVEY PLATE
NOTE BOOK NO. []
DATE []