

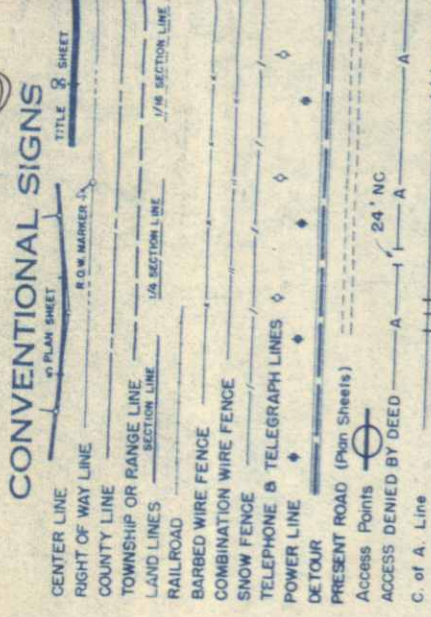
COLORADO DEPARTMENT OF HIGHWAYS

PLAN AND PROFILE OF PROPOSED FEDERAL AID PROJECT NO. I-25-3(4)229 STATE HIGHWAY NO. 185 ADAMS & WELD COUNTIES

INDEX OF SHEETS

- 1 Title Page and Sketch Map
- 2 Typical Sections and General Notes
- 3 Pit Locations and Tabulation of Length and Design Data & Typical Section of Underdrain
- 4-6 Summary of Approximate Quantities
- 7 Surfacing Plan, Sub-Base Plan & ROW Markers
- 8 Fencing Requirements
- 9 Fencing Requirements and Tabulation of Hinge Points
- 10 Details of C.B.C. Extension Sta 1324r, Median Outlet Drain Sta 1375+ & 1432+ & Concrete Slope Feewing Sta 1375+ Details of Concrete Division Boxes
- 11 Details for Siphons, Double Driveway Gates and Median Opening Sta 1383+ and Sketch of Modified Type "X" Inlet & Ditch Lining
- 12 List of Structure Quantities
- 13-15 Details of Intersection Structure at S.H. No 52, Sta 1185+
- 16-21 Details of Triple 14" 14" C.B.C. Sta 1280+
- 22-23 Details of Railroad Separation Structure Sta 1323+
- 24-29c Details of Intersection Structure Sta 1343+
- 30-34 Details of 20'x5' C.B.C. Sta 1367+
- 35 Details of 20'x5' C.B.C. Sta 1383+
- 37-41 Details of Separation Structures Sta 1396+
- 42-47 Details of Bridges Sta 1464+
- 48-53 Details of Intersection Structure at S.H. No 7, Sta 14+
- 54-57 Details of Bridge on S.H. No. Tower Bull Canal Rt. Sta 14+ (Special Revision for C.B.C. Sta 1524+)
- 58 Standard Methods for Superlevation & Widening of Curves M-1-C
- 59 Standard Methods for Superlevating Curves on Divided Highways M-1-C-1
- 60 Standard Side Approach Roads, Flaring Cut Slope Treatment & Widening at Bridges & at Crest of Grades M-2-EN
- 61 Standard Marker Posts and Bench Marks M-7-D
- 62 Standard Letters & Figures for Year Numbers & Structure Numbers M-10-D
- 63 Standard Types of Railroad Warning Signs M-27-D
- 64 Standard Wire Fence with Metal Posts M-18-C
- 65 Standard Roadway Construction Detail Signs M-39-C
- 66-68 Standard Concrete Inlet for Median Ditch M-46-B
- 69 Standard Wingwalls for Various Types of Concrete Box Culverts M-102-J
- 70 Standard Headwalls and Abutts for C.M.P. Culverts M-107-D
- 71 Reinforced Concrete Culvert Pipe and Concrete Spew Pipe M-112-F
- 72 Standard End of Angle Sections & Expansion Joints for Concrete Pipe M-115-B
- 73 Standard Reinforced Concrete Pipe Siphon M-125-A
- 74-85 Standard Siphon Construction Detail Signs with Concrete Inlet Outlet Boxes M-123-E
- 86-89 Alignment Plan & Profile - Main Roadway
- 90-93 Details of Intersection Sta 1185+
- 94 Profile of Crossroad & Frontage Roads at Separation Sta 1396+
- 95-97 Details of Intersection Sta 14+
- 98 DETAILED
- 99 Summary of Earthwork Quantities and Tabulation of Intercepting Ditches
- 100-331 Cross Sections (Main Roadway)
- 332-392 Cross Sections (Intersections)
- * 23a Details of Concrete Box Culvert Sta 1290+
- 15a Details Showing Portions of Structure to Receive Class "1" Surface Finish
- 62a Standard Concrete Pavement Joint Details M-8-D
- 66a Standard Methods of Backfill Around Structures M-60-B

STA. 1172 + 00 BEGIN I-25-3(4)229 [I 002-1(13)]
 - End I-25-3(10)235 Opp. Sta. 1094+463 On A.W.P. 7007-B

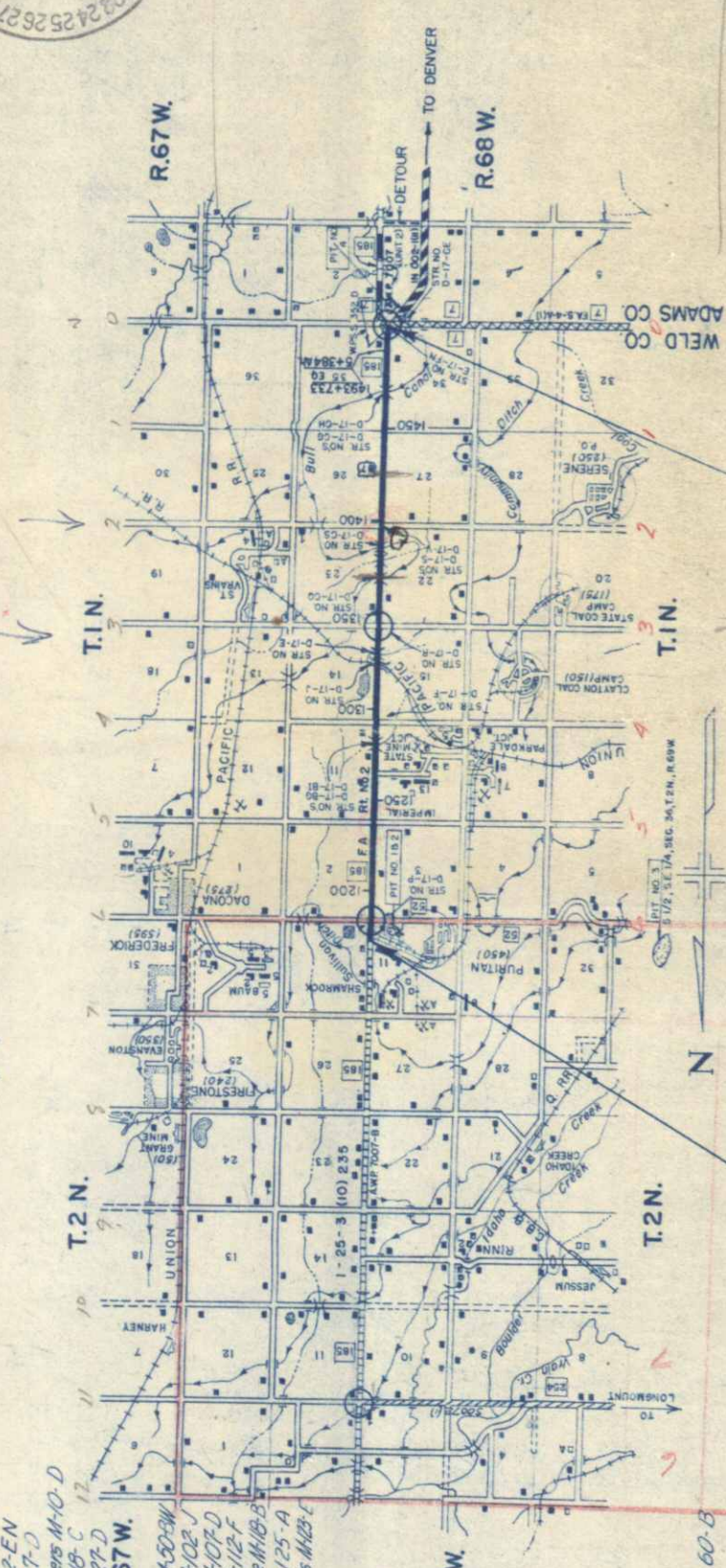


Sta 1343 Erie Inty.
 6,287
 8,890
 14,371

**AS CONSTRUCTED PLANS
 RETURN TO DIST. 4 DESIGN**



NOTE: 1/4" = 115' West of Present Highway



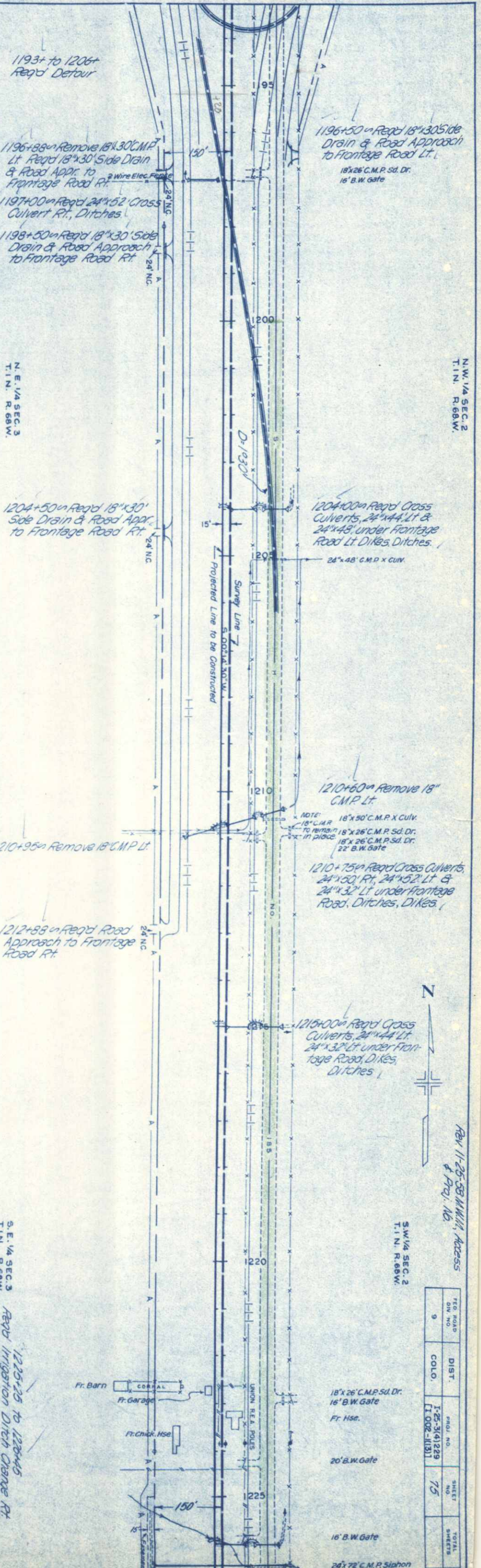
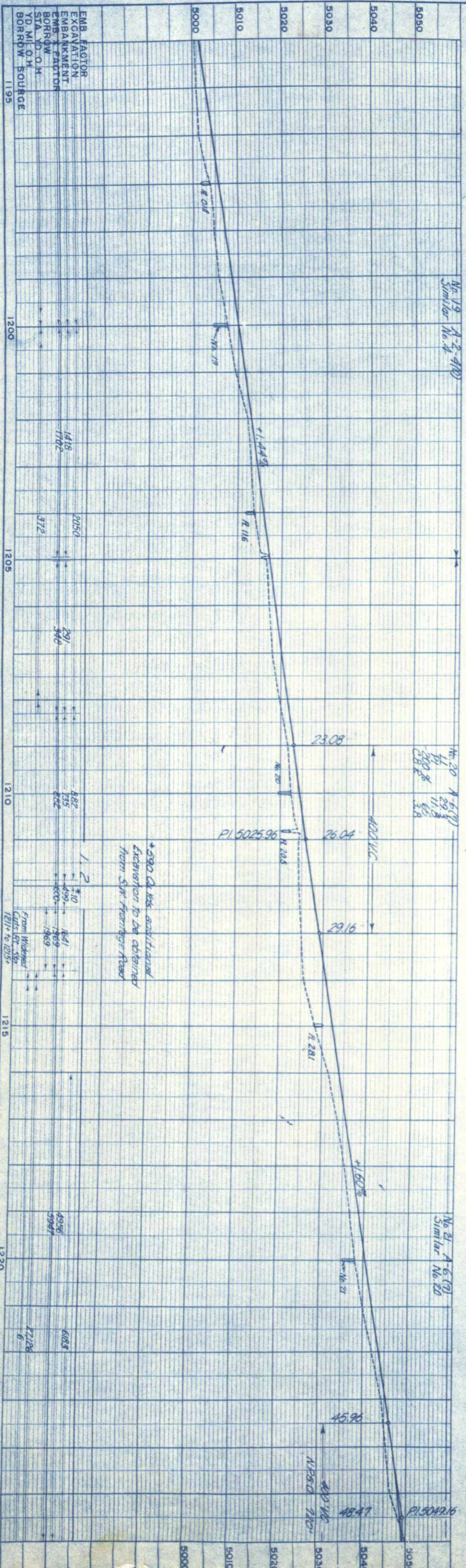
SEE SPECIAL PROVISIONS FOR NOTICE TO BIDDERS

APPROVED
 COLORADO DEPARTMENT OF HIGHWAYS
 Chief Engineer
 M. W. M.

APPROVED
 DEPARTMENT OF COMMERCE BUREAU OF PUBLIC ROADS
 DIVISION ENGINEER

PROFILE	SURVEYED	BY	DATE
NOTE BOOK	PLOTTED		
NO. 15289	GRADES CHECKED		
	S. M.E. NOTED		
	STRUCTURE NOTATIONS CHKD.		

PLAN	SURVEYED	BY	DATE
15289	PLOTTED		
NOTE BOOK	ALIGNMENT CHECKED		
NO. 15289	RT. OF-WAY CHECKED		



N.W. 1/4 SEC. 2
T. 1 N. R. 66 W.

Rev 11-25-58 M.W. Access
& Proj. No.



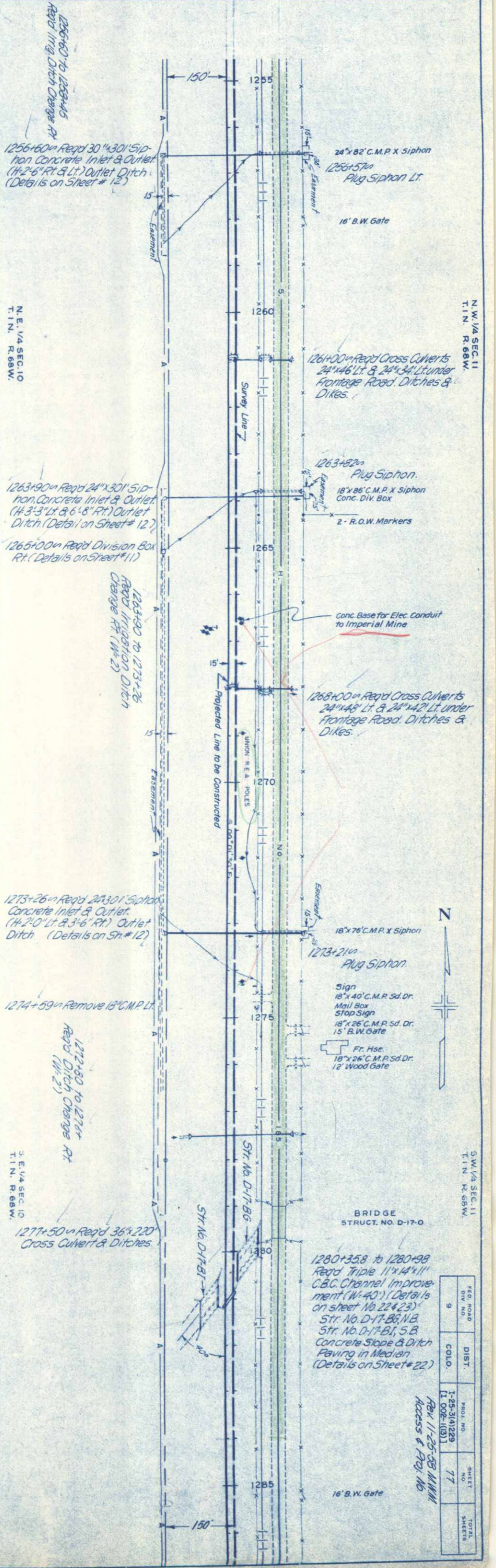
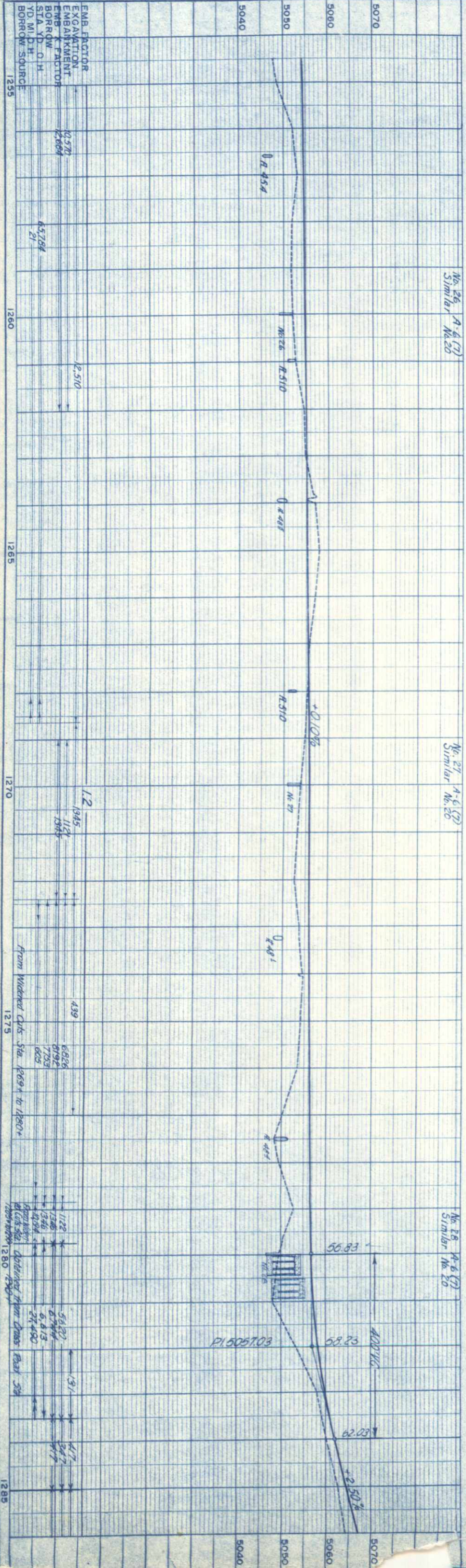
S.W. 1/4 SEC. 2
T. 1 N. R. 66 W.

REG. ROAD DIV. NO.	DIST.	PROJ. NO.	SHEET NO.	TOTAL SHEETS
9	COLO.	1-23-3(4)229 T. 002-11311	75	

MADE IN U.S.A. - PROFILE
CONTRACT ENGINEERS CO., INC. 300 217 MILLIKEN

PROFILE	SURVEYED	BY	DATE
NOTE BOOK NO. 1579	PLOTTED		
	GRADES CHECKED & AS NOTED		
	STRUCTURE NOTATIONS CHECKED		

PLAN	SURVEYED	BY	DATE
1579	PLOTTED		
NOTE BOOK NO. 1579	ALIGNMENT CHECKED		
	RT. OF WAY CHECKED		



1256+60 to 1268+45
Reqt Irrig Ditch Change Rt

1256+60 Reqt 30"x30" Siphon Concrete Inlet & Outlet (4'-2" Rt. & Lt.) Outlet Ditch (Details on Sheet # 12)

1263+90 Reqt 24"x30" Siphon Concrete Inlet & Outlet (4'-3" Lt. & 6'-8" Rt.) Outlet Ditch (Details on Sheet # 12)

1265+00 Reqt Division Box Rt. (Details on Sheet # 11)

1268+90 to 1273+26
Reqt Irrigation Ditch Change Rt (W-2)

1273+26 Reqt 24"x30" Siphon Concrete Inlet & Outlet (4'-2" Lt. & 3'-6" Rt.) Outlet Ditch (Details on Sh. # 12)

1274+59 Remove 18" C.M.P. Lt

1272+80 to 1274+
Reqt Ditch Change Rt (W-2)

1277+50 Reqt 36"x22" Cross Culvert & Ditches

N.W. 1/4 SEC. 11
T. 1 N. R. 68 W.

S.W. 1/4 SEC. 11
T. 1 N. R. 68 W.

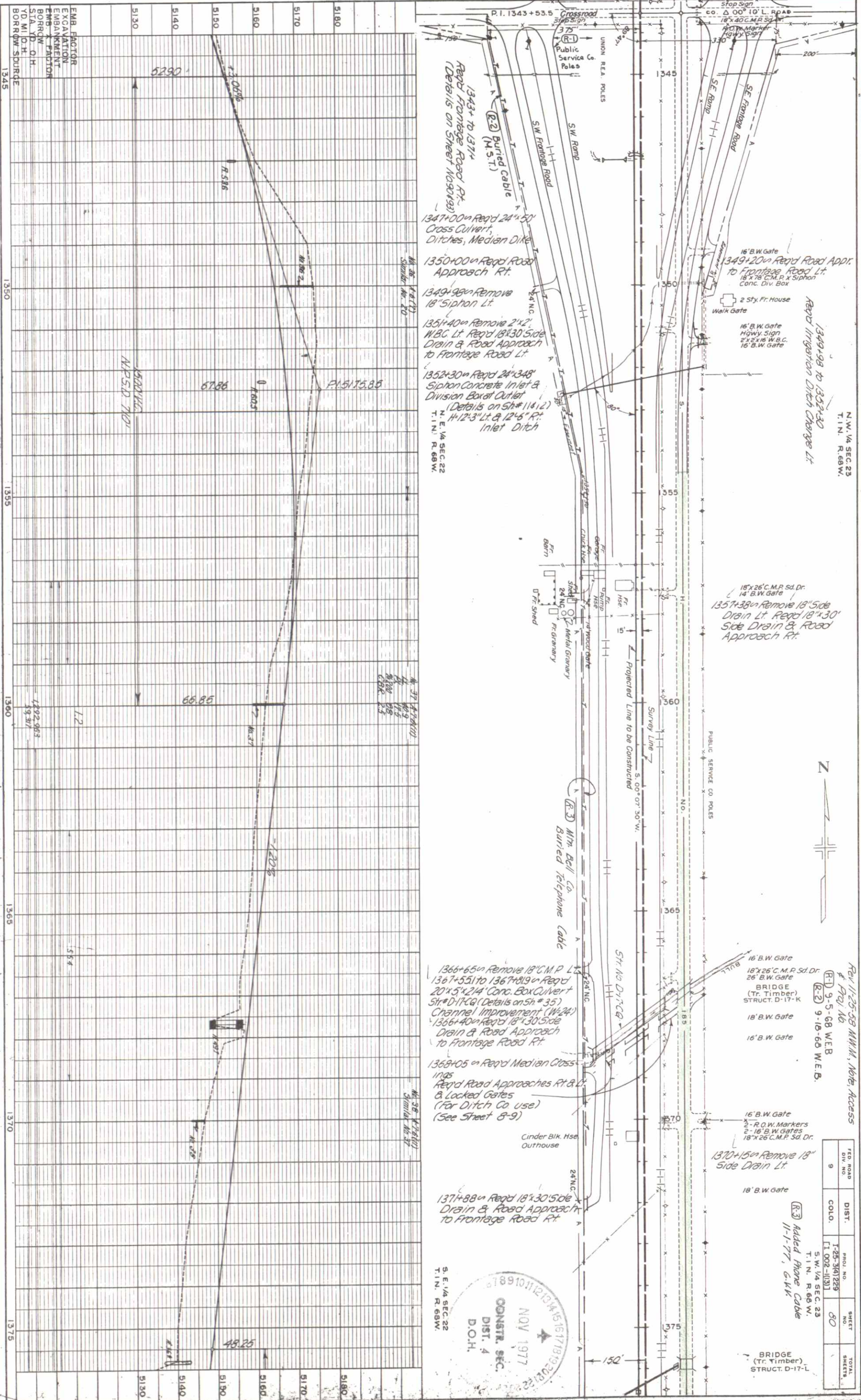


PROJ. ROAD DIV. NO.	DIST.	PROJ. NO.	SHEET NO.	TOTAL SHEETS
9	COLO.	1-25-31(1)229	77	
		1-002-(193)		

Rev 11-25-08 M.M.M.
Access & Proj. No.

NOTE BOOK NO. 15272
 PLAN 180
 GRADES CHECKED
 & M.I. NOTED
 STRUCTURE NOTATIONS CHECKED

NOTE BOOK NO. 15272
 ALIGNMENT CHECKED
 RT. OF WAY CHECKED



N.W. 1/4 SEC. 23
 T. 1 N. R. 68 W.



Rev 11-25-58 M.W.M., Note, Access
 (R-1) 9-5-68 W.E.B.
 (R-2) 9-16-68 W.E.B.

FED. ROAD DIST. NO.	DIST. COLO.	PROJ. NO.	SHEET NO.	TOTAL SHEETS
9		1-25-34(1229) 1-002-(131)	80	

NOV 1977
 CONSTR. SEC.
 DIST. 4
 D.O.H.
 189107112104516171819202122

S.E. 1/4 SEC. 22
 T. 1 N. R. 68 W.

(R-3) Added Phone Cable
 11-1-77, G.W.K.

BRIDGE (Tr. Timber)
 STRUCT. D-17-L

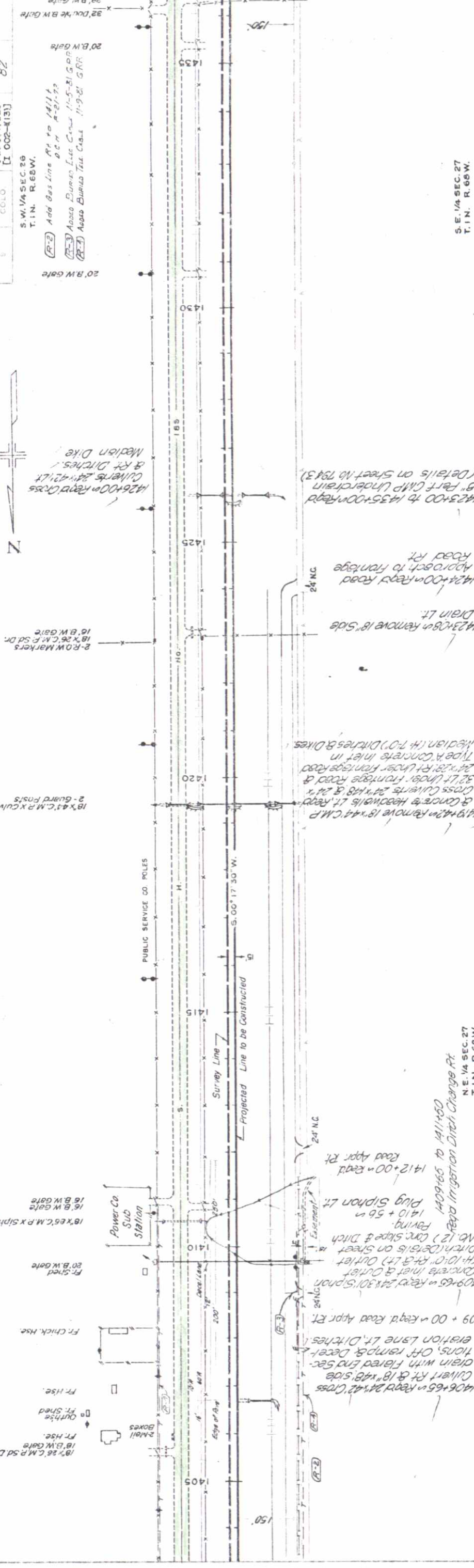
Rev 11-25-58 M.H.M. Note,
Access, Proj. No.

N.W. 1/4 SEC. 26
T. 1 N. R. 68 W.

S.W. 1/4 SEC. 26
T. 1 N. R. 68 W.

S.E. 1/4 SEC. 27
T. 1 N. R. 68 W.

S.E. 1/4 SEC. 27
T. 1 N. R. 68 W.



JUL 24 1962

1529

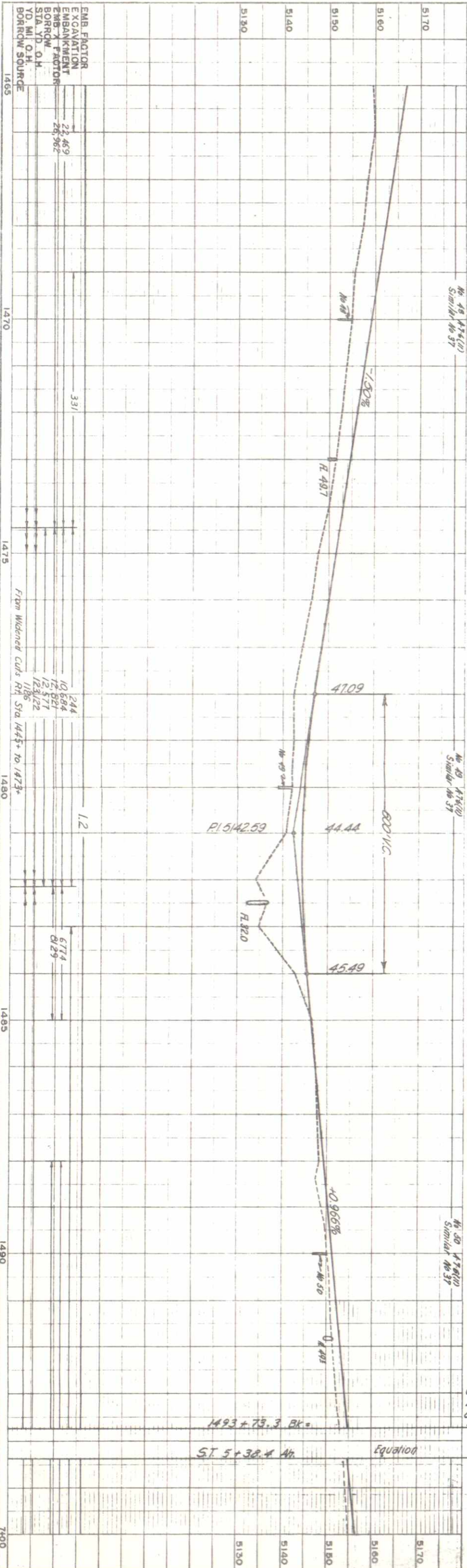
15384

1529

15384

15292

N.W. 1/4 SEC. 35
 T. 1 N. R. 66 W.



N.E. 1/4 SEC. 34
 T. 1 N. R. 66 W.

1473+00.0 Road Cross Culverts
 24"x54" Lt. 29"x18"x44" Lt.
 Under Frontage Road, Metal
 Aprons, Dikes, Ditches.

1475+50.0 Road Cross
 (On Main Rdwy.)
 Details on Sheet No. 95496)

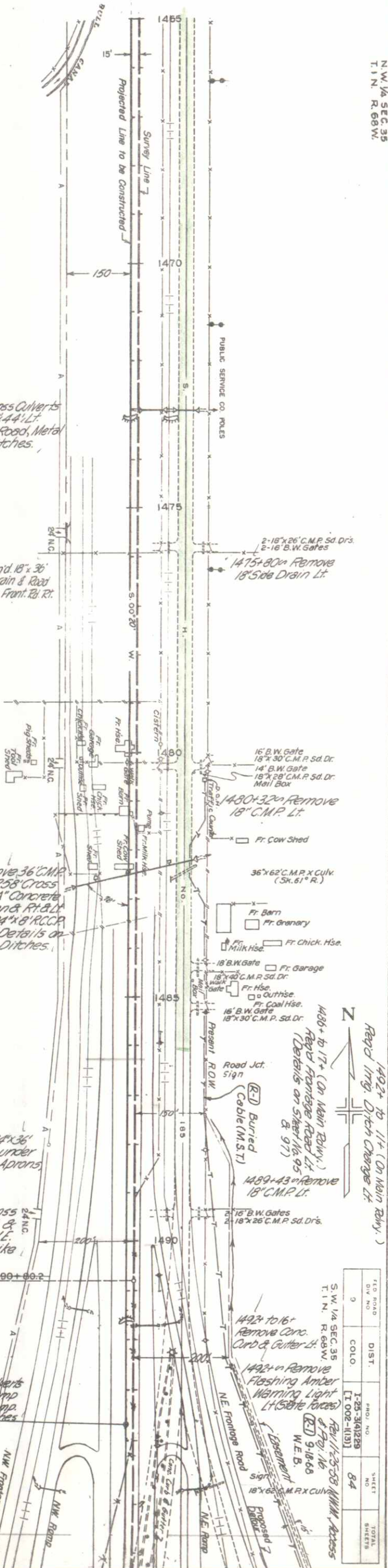
1482+50.0 Remove 36" C.M.P.
 Lt. Repl. 60"x258" Cross
 Culvert, Type "A" Concrete
 Inlet in Median & Rt. & Lt.
 (4'-3'-6") with 24"x8" R.C.C.P.
 Outlet drains. (Details on
 Sheet No. 10.) Ditches.

1491+40.0 Road 24"x36"
 Cross Culvert Rt. under
 NW Ramp Metal Aprons,
 Ditches.

1491+70.0 Road Cross
 Culverts 24"x44" Lt. &
 24"x26" Lt. under N.E.
 Ramp, Median Dike
 & Ditches.

6'-70" Remove 18"x62
 C.M.P. Lt. Repl. Cross Culverts
 24"x46" Lt. under N.E. Ramp
 & 24"x46" Lt. under N.W. Ramp,
 Metal Aprons & Ditches.

Equation
 $ST 5 + 32.4 An$

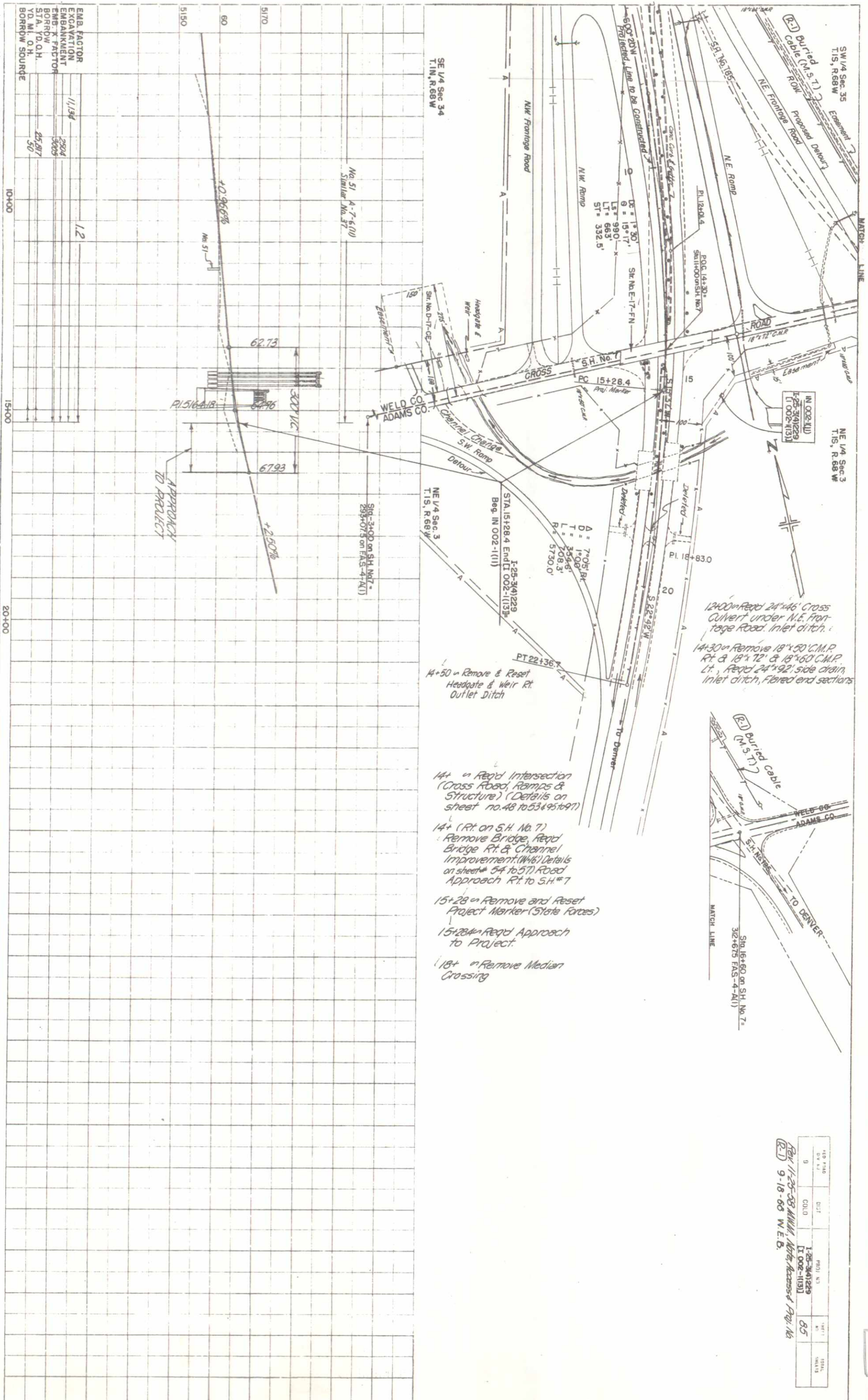


1492+ to 17+ (On Main Rdwy.)
 Road Invg. Ditch Change Lt.
 (Details on Sheet No. 95496)

1492+ to 16+
 Remove Conc. Curb & Gutter Lt.
 1492+16.0 Remove Flashing Amber
 Warning Light Lt. (50th Force)
 (Details on Sheet No. 95496)

A.C.

PLAN
 DATE: 11-25-63
 DRAWN BY: W.E.B.
 CHECKED BY: W.E.B.
 PROJECT: FAS-4-A(1)



EMBANKMENT	11.194	2504
EXCAVATION	11.194	2504
EMBANKMENT	11.194	2504
BORROW	25.817	50
BORROW SOURCE		

1/2	10+00	15+00	20+00
-----	-------	-------	-------

- 14+50 Remove & Reset Headgate & Weir Rt. Outlet Ditch
- 14+ Req'd Intersection (Cross Road, Ramps & Structure) (Details on sheet no. 48 to 53 & 95 to 97)
- 14+ (Rt. on S.H. No. 7) Remove Bridge, Req'd Bridge Rt. & Channel Improvement. (W-6) Details on sheet 54 to 57) Road Approach Rt. to S.H. #7
- 15+28 Remove and Reset Project Marker (State Forces)
- 15+284 Req'd Approach to Project.
- 18+ Remove Median Crossing

12x100" Req'd 24"x46" Cross Culvert under N.E. Frontage Road. Inlet ditch.
 14+30" Remove 18"x50" C.M.P. Rt. & 18"x72" & 18"x50" C.M.P. Lt., Req'd 24"x92" side drain Inlet ditch, Flared end sections

REV	DATE	BY	CHKD	PROJ. NO.	SHEET NO.	TOTAL SHEETS
1	11-25-63	W.E.B.	W.E.B.	1-25-36(1)229	85	
2	9-18-66	W.E.B.		1-002-1(13)		

A.O.