

# COLORADO DEPARTMENT OF TRANSPORTATION

89130

## FEDERAL AID PROJECT NO. IM-IR(CX) 25-3(106)\*

### STATE HIGHWAY NO. 25

### WELD COUNTY

PLAN AND PROFILE OF PROPOSED *AS CONSTRUCTED*

FED. ROAD REGION	DIVISION	PROJECT NUMBER	SHEET NUMBER
VIII	COLD	IM-IR(CX) 25-3(106)	1

NO REVISIONS  REVISED  VOID

REVISIONS	DATE	BY

\* ALL REFERENCES TO PROJECT NO. IR(CX)25-3(106) IN THE PLANS ARE HEREBY REVISED TO PROJECT NO. IM-IR(CX)25-3(106).

ALL REFERENCES TO DEL CAMINO INTERCHANGE ARE HEREBY REVISED TO DEL CAMINO FRONTAGE ROAD.

#### INDEX OF SHEETS

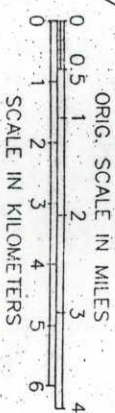
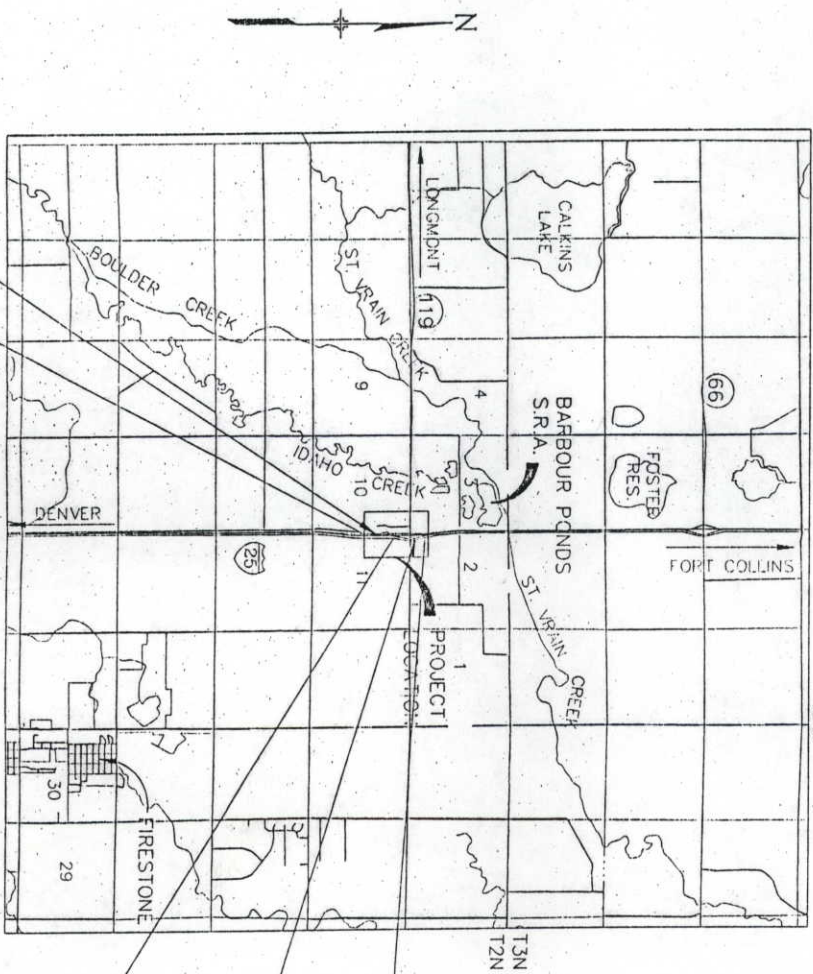
SHEET NO.	DRAWING NO.	TITLE SHEET DESCRIPTION
1	TY-1-1	STANDARD PLANS LIST
2	TY-1-2	TYPICAL SECTIONS
3,4	E-1	GENERAL NOTES, EROSION CONTROL, SUMMARY OF EARTHWORK
5	S-1-1	SUMMARY OF APPROXIMATE QUANTITIES
6-12	T-1	TABULATION OF STRUCTURE QUANTITIES
13	T-2	TABULATION OF SURFACING QUANTITIES
14	T-3	TABULATION OF STORM SEWER QUANTITIES
15	T-4	TABULATION OF CURB & GUTTER, SIDEWALK & MISC. ITEMS
16	GP-1	GEOMETRIC PLAN
17	RD-1-1	ROADWAY DETAILS
18,19	PP-1-1	ROADWAY PLAN & PROFILES
20-25	CG-1-1	CURB & GUTTER PLAN & PROFILES
26-28	DP-1-1	PLAN & PROFILE - DRAINAGE IMPROVEMENTS
29-30	DP-3-1	DRAINAGE DETAILS
31-32	DP-5-1	DRAINAGE CROSS SECTIONS
33-35	LP-1	LIGHTING PLAN AND TABULATION
36	SS-1	TABULATION OF TRAFFIC CONTROL DEVICES
37	SS-2-1	PAVEMENT MARKINGS
38-40	SS-5	EXISTING SIGNING, SIGNING & STRIPING PLANS
41	SS-6-1	TRAFFIC SIGNAL PLANS
42-49	TS-1-1	CONSTRUCTION TRAFFIC CONTROL DEVICES
50	CT-1	ADVANCE CONSTRUCTION SIGNING PLAN
51-52	CT-2	SUGGESTED CONSTRUCTION PHASING & TRAFFIC CONTROL PLAN
53	CT-3	RIGHT-OF-WAY PLANS
54	RP-2-1	RIGHT-OF-WAY PLANS
55-60		
61-69		

SCALES OF ORIGINAL DRAWINGS  
PLAN SHEETS 1"=50'

PROFILE SHEETS { 1"=50' HORIZ.  
1"=5' VERT.

GRADE LINE ON PROFILE IS SHOWN AS GRADE OF FINISHED ROAD

TABULATION OF LENGTH AND DESIGN DATA	
STATION	ROADWAY
	LIN. FT.
318+22.40 (SB ON-RAMP) BEGIN IR(CX)25-3(106) MP. 240.16	2375.75
EQUATION STATION 341+98.15 (SB ON-RAMP)= 941+92.61 (I-25), 66'RT	636.27
948+28.88 (I-25), 66'RT END IR(CX)25-3(106) MP. 239.59	
<b>TOTALS</b>	<b>3012.02</b>
SUMMARY	
ROADWAY (NET LENGTH)	LIN. FT.    MILES
3012.02	0.570
PROJECT GROSS LENGTH	3012.02    0.570
ROADWAY DESIGN DATA (SB ON-RAMP)	
MAXIMUM DEGREE OF CURVE = 2'00'	
MAXIMUM GRADE = 0.48%	
MINIMUM S.S.D. HORIZONTAL = >850'	
MINIMUM S.S.D. VERTICAL = >850'	
MAXIMUM DESIGN SPEED = 60 MPH	
1993 TRAFFIC VOLUME	{ ADT = 5,200 {%TRUCKS = 8%
2013 DESIGN TRAFFIC VOLUME	{ DHV = 975 {ADT = 10,600



948+28.88 (I-25), 66'RT.  
END PROJECT NO.  
IM-IR(CX)25-3(106)  
MP. 239.59

951+29.63 (I-25), 54'RT.  
END APPROACH TO PROJECT NO.  
IM-IR(CX)25-3(106)  
MP. 239.53

313+00 (SB ON-RAMP)  
BEGIN APPROACH TO PROJECT NO.  
IM-IR(CX)25-3(106)  
MP. 240.26

318+22.40 (SB ON-RAMP)  
BEGIN PROJECT NO.  
IM-IR(CX)25-3(106)  
MP. 240.16

OPP. 918+18.81, I-25-3(7)236

EQUATION STATION  
341+98.15 (SB ON-RAMP)=  
941+92.61 (I-25) 66'RT.  
I-25-3(7)236

APPROVED:

CONTRACTOR *DELTA ROCK ROAD*  
PROJECT ENGINEER *DAVID L. BOGARD*  
(Project or Resident)  
PROJECT STARTED *4-21-93*  
PROJECT COMPLETED *3-4-94*

AS CONSTRUCTED INFORMATION

FELSBURG  
HOLT &  
ULLEVIG

DAF / REGION 4

**AS CONSTRUCTED PLANS  
RETURN TO DIST. 4 DESIGN**

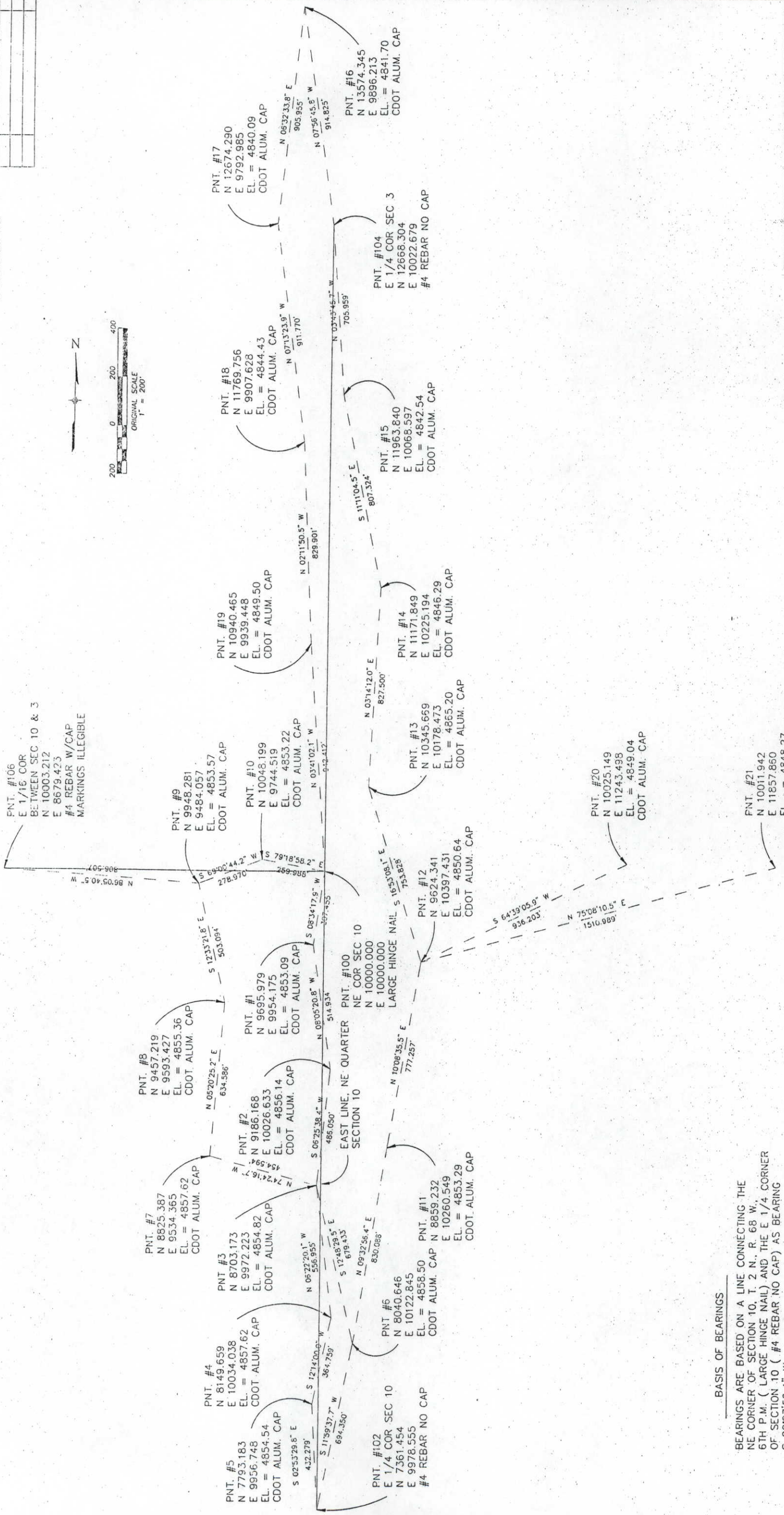
AS CONSTRUCTED PLANS  
APPROVED *[Signature]*  
DATE *6/30/94*

FOR INFORMATION ONLY

SURVEY CONTROL NETWORK

FED. ROAD REGION	DIVISION	PROJ. NO.	SHEET NO.	TOTAL SHEETS
VIII	COLORADO	IM-14(CX) 25-3(106)	61	

DEL CAMINO INTERCHANGE



BASIS OF BEARINGS

BEARINGS ARE BASED ON A LINE CONNECTING THE NE CORNER OF SECTION 10, T. 2 N., R. 68 W., 6TH P.M. (LARGE HINGE NAIL) AND THE E 1/4 CORNER OF SECTION 10 ( #4 REBAR NO CAP) AS BEARING S 00°27'56.4" W

DEL CAMINO INTERCHANGE	
SURVEY CONTROL NETWORK	
DATE	DESIGNED BY
AUG. 92	90-010
DRAWN BY	CHECKED BY
DRAWING NO.	RW-5

FOR INFORMATION ONLY

T. 2 N., R. 68 W., 6th P.M.

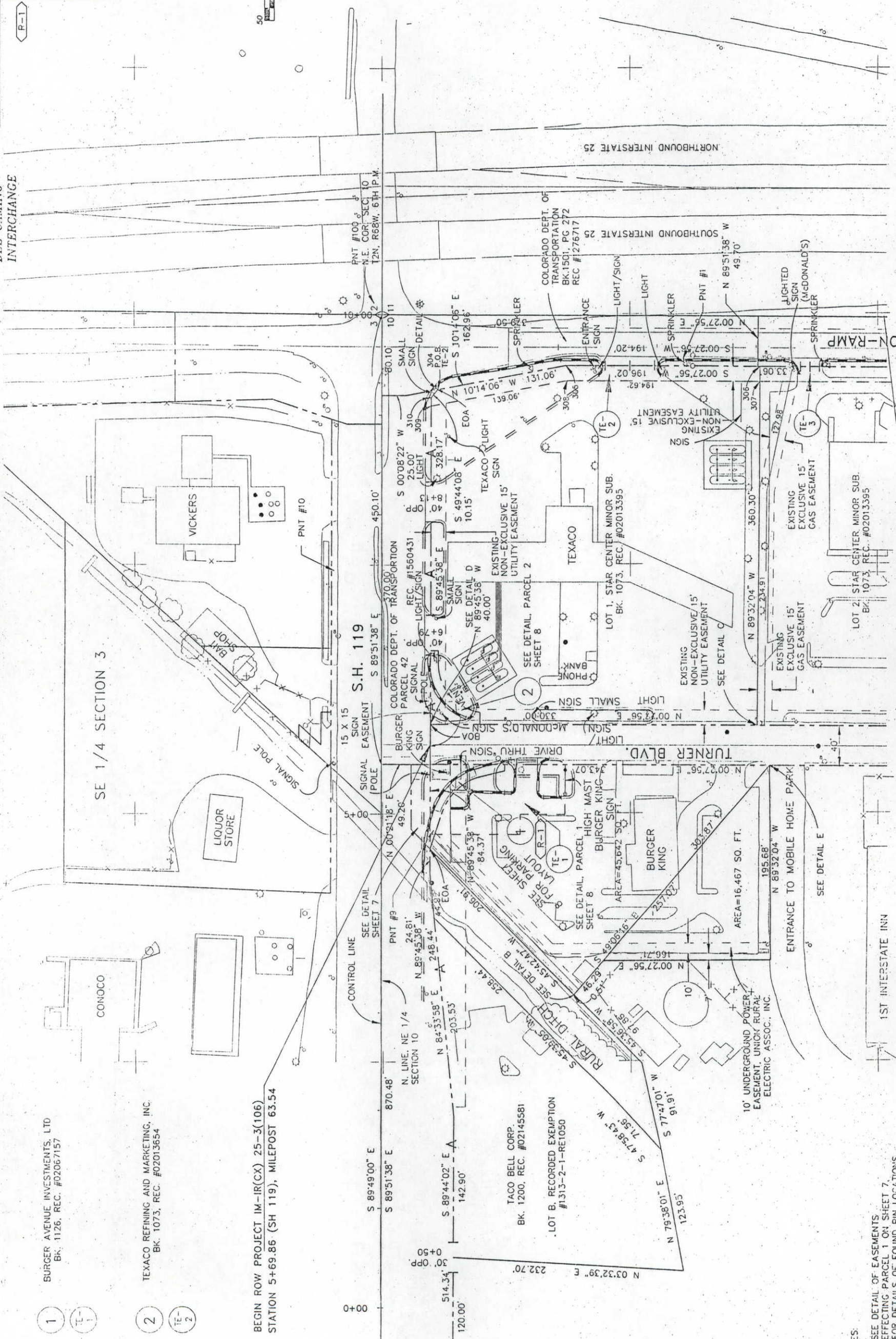
FED. ROAD REGION	DIVISION	PROJ. NO.	SHEET NO.	TOTAL SHEETS
VIII	COLORADO	IM-IR(CX) 25-3(106)	65	

REVISIONS	
12/18/92	REVISED: IE-1, WDC
	LABELING ADDED, LIR, WEIGHTS MODIFIED
	ENTIRE SHEET
	DCS



RIGHT OF WAY  
DEL CAMINO INTERCHANGE



1 BURGER AVENUE INVESTMENTS, LTD  
BK. 1126, REC. #02067157

2 TEXACO REFINING AND MARKETING, INC.  
BK. 1073, REC. #02013654

BEGIN ROW PROJECT IM-IR(CX) 25-3(106)  
STATION 5+69.86 (SH 119), MILEPOST 63.54

S.H. 119

TACO BELL CORP.  
BK. 1200, REC. #02145581

LOT B, RECORDED EXEMPTION  
#1313-2-1-RE1050

- NOTES:
- SEE DETAIL OF EASEMENTS AFFECTING PARCEL 1 ON SHEET 7.
  - FOR DETAILS OF FOUND PIN LOCATIONS, SEE DETAILS A-F ON SHEET 7.

FELSBURG  
HOLT &  
ULLEVIG

RW-6

NE 1/4 SECTION 10

FOR INFORMATION ONLY

RIGHT OF WAY  
DEL CAMINO  
INTERCHANGE

FED. ROAD REGION	DIVISION	PROJ. NO.	SHEET NO.	TOTAL SHEETS
VIII	COLORADO	IM-IR(CX) 25-3(106)	66	

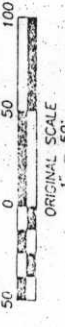
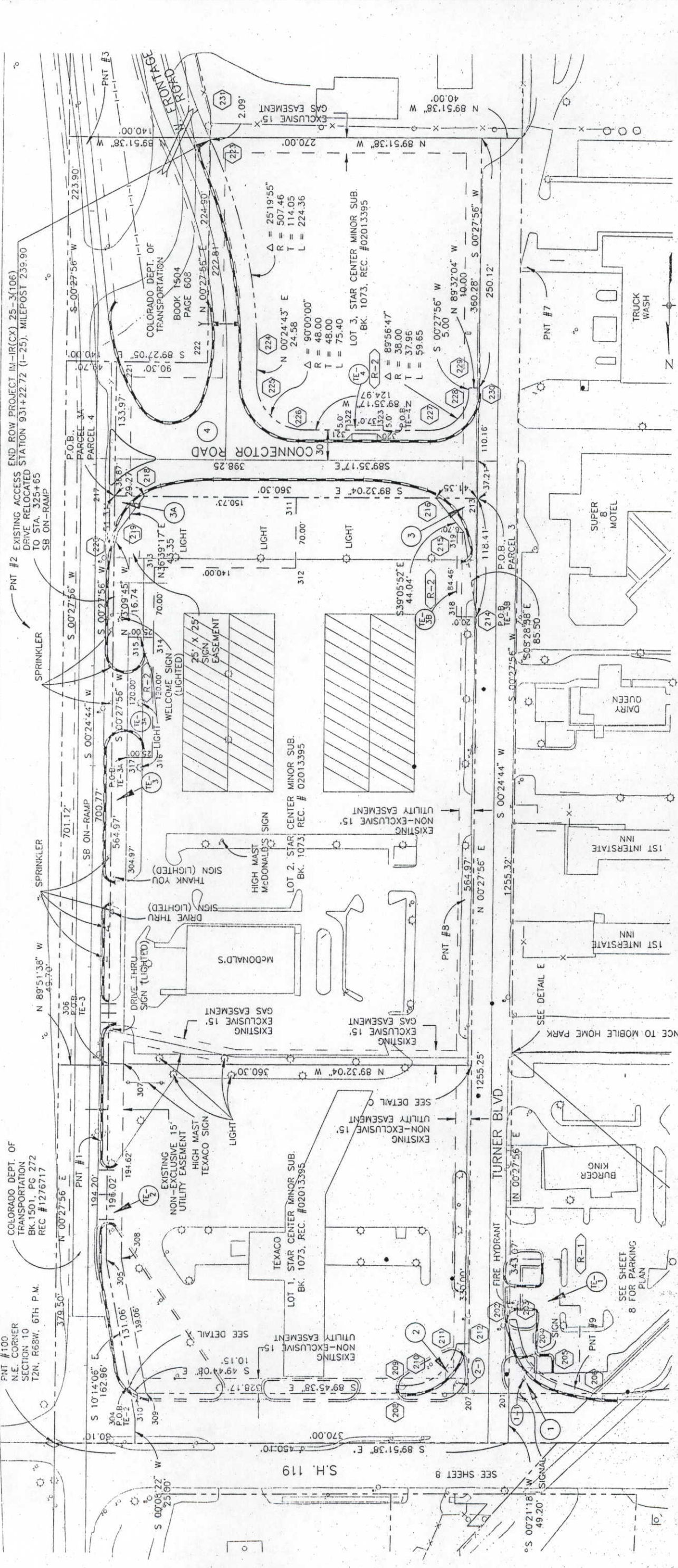
REVISIONS	
R-1	12/18/92 REVISED TE-1, M.S. LABELING ADDED.
R-2	11/17/93 LINE W/5. MODIFIED ENTIRE SHEET
	ADDED TE-3A, TE-3B, TE-4

MCDONALD'S CORP.  
BK. 1075, REC. #02015794

TEXACO REFINING  
AND MARKETING, INC.  
BK. 1073, REC. #02013654

T. 2 N., R. 68 W., 6th P.M.

INTERSTATE 25



NOTE:  
FOR ALIGNMENT DETAILS AND COORDINATES,  
SEE CONSTRUCTION PLANS

NE 1/4, SECTION 10

FELSBURG  
HOLT &  
ULLEVIG  
RW-7



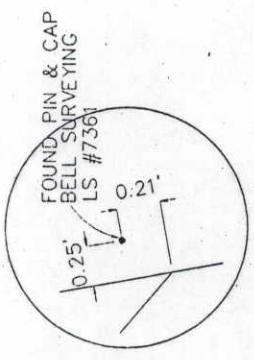
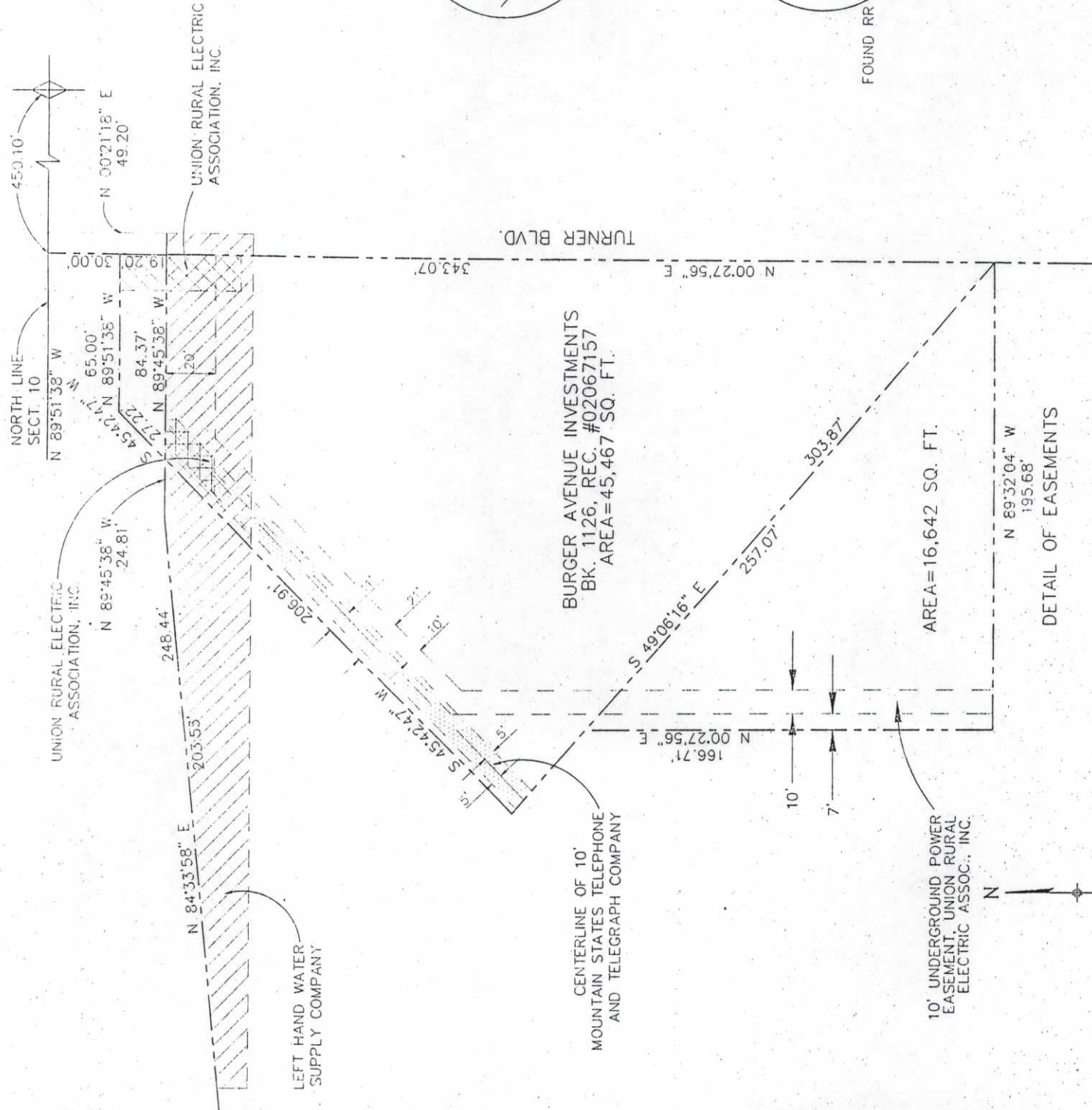
FOR INFORMATION ONLY

FEL REGION	DIVISION	PROJ. NO.	SHEET NO.	TOTAL SHEETS
XIII	COLORADO	IN-IR(CX) 25-3(100)	68	

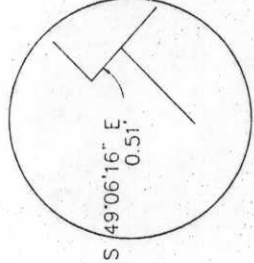
  

REVISIONS	

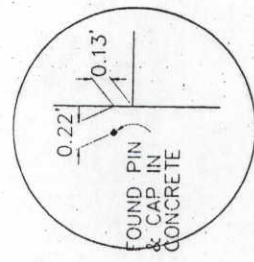
**RIGHT OF WAY**  
**DEL CAMINO INTERCHANGE**



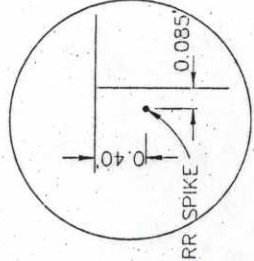
DETAIL A  
SHEET 4



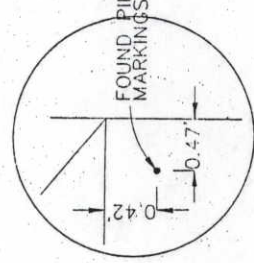
DETAIL B  
SHEET 4



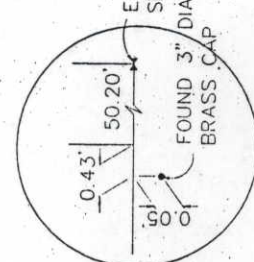
DETAIL C  
SHEET 4



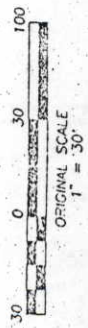
DETAIL D  
SHEET 4



DETAIL E  
SHEET 4



DETAIL F  
SHEET 6



FELSBURG  
HOLT &  
ULLEVIG

DEL CAMINO INTERCHANGE

DETAILS

PROJECT NO.	DATE	SHEET NO.	OF SHEETS	DRAWING NO.
E-1-92	36-010	7	7	RW-9

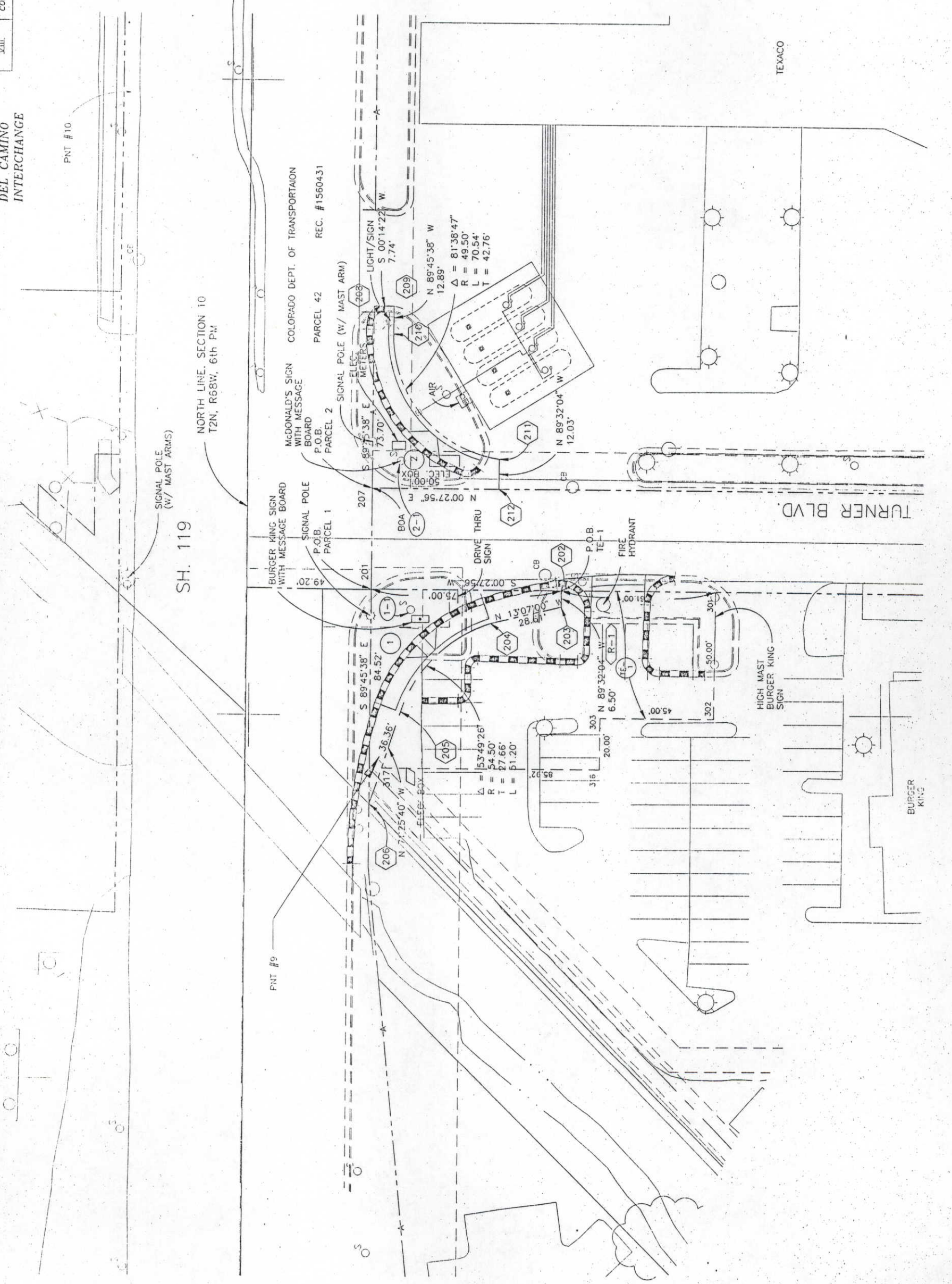
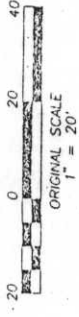
FOR INFORMATION ONLY

RIGHT OF WAY  
DEL CAMINO  
INTERCHANGE

FED. ROAD REGION	DIVISION	PROJ. NO.	SHEET NO.	TOTAL SHEETS
XIII	COLORADO	IM-IR(CX) 25-3(106)	69	

REVISIONS	
12/18/92	REVISED TE-11 W&S LABELING ADDED. LINE WEIGHTS MODIFIED ENTIRE SHEET



FELSBURG  
HOLT &  
ULLEVIG

RW-10