

SURVEY CONTROL DIAGRAM

CDOT PROJECT NO. IM-IR(CX) 70-4(145)
INTERSTATE 70 WASHINGTON STREET TO BRIGHTON BOULEVARD
LOCATED IN SECTIONS 15, 22 & 23, TOWNSHIP 3 SOUTH, RANGE 68 WEST,
OF THE 6TH PRINCIPAL MERIDIAN
CITY AND COUNTY OF DENVER

FED. ROAD REGION	DIVISION	PROJ. NO.	SHEET NO.	SHEET TOTALS
VIII	COLO.			
REVISIONS				

NOTES

- THIS SURVEY DRAWING IS NOT A COMPLETE BOUNDARY SURVEY OF ALL ADJOINING OWNERS AND IS PREPARED FOR COLORADO DEPARTMENT OF TRANSPORTATION PURPOSES ONLY.
- NOTICE: ACCORDING TO COLORADO LAW YOU MUST COMMENCE ANY LEGAL ACTION BASED UPON ANY DEFECT IN THIS SURVEY WITHIN THREE (3) YEARS AFTER YOU FIRST DISCOVER SUCH DEFECT. IN NO EVENT MAY ANY ACTION BASED UPON ANY DEFECT IN THIS SURVEY BE COMMENCED MORE THAN TEN (10) YEARS FROM THE DATE OF THE CERTIFICATION SHOWN HEREON.
- ALL COORDINATES LISTED ARE MODIFIED STATE PLANE COORDINATES, COLORADO COORDINATE SYSTEM OF 1983 (CENTRAL ZONE).
- ALL COORDINATES LISTED ARE SHOWN IN BOTH FEET AND METERS AS REQUESTED BY THE COLORADO DEPARTMENT OF TRANSPORTATION.
- FOR THE PURPOSE OF CONVERTING COORDINATES FROM METERS TO FEET, THE U.S. SURVEY FOOT IS USED. THE CONVERSION FACTOR IS: ONE METER EQUALS 3937/1200 FEET.
- GRID COORDINATES (NAD '83) WERE FACTORED TO SURFACE COORDINATES AT GPS STATION "PEARL", POINT NO. 800 SHOWN HEREON. THE AVERAGE PROJECT COMBINED FACTOR USED IS 0.9997614.
- ALL COORDINATES SHOWN HEREIN HAVE BEEN ROTATED FROM GRID TO GEODETIC AZIMUTH. THE ROTATION ANGLE FROM GRID TO GEODETIC AZIMUTH = +00°19'51.12" BEING THE MEAN CONVERGENCE ANGLE BETWEEN GPS STATIONS "PEARL", "RIBBON", "HUDSON", AND "TOWER". ALL POINTS BEING ROTATED ABOUT GPS STATION "PEARL".
- ALL INVERSED AZIMUTHS BETWEEN POINTS SHOWN HEREON ARE GEODETIC AZIMUTHS BASED ON THE ABOVE-REFERENCED GPS POINTS.
- ALL DISTANCES SHOWN HEREON ARE SURFACE MEASUREMENTS BASED ON FIELD TRAVERSES COMPLETED BY THE LUND PARTNERSHIP, INC., IN MAY 1992 AND MAY 1994.
- GPS STATIONS "PEARL", "TOWER", "RIBBON", AND "HUDSON" ARE CONSIDERED SUPERIOR IN POSITIONAL TOLERANCE AND WERE HELD AS THE BASIS FOR THIS SURVEY.
- A WEIGHTED LEAST SQUARES ADJUSTMENT WAS APPLIED TO INTERMEDIATE CONTROL POINTS SET BETWEEN "PEARL", "TOWER", "RIBBON", AND "HUDSON". ADJUSTED CLOSURE EXCEEDS 1:100,000.
- UNADJUSTED HORIZONTAL SURVEY CONTROL PRECISION COMPUTED TO ±0.10 FEET WITH A 95% CERTAINTY.
- ALL BEARINGS SHOWN HEREON ARE BASED ON THE CALCULATED GEODETIC BEARING BETWEEN GPS STATION "PEARL" AND "TOWER" AS BEING N32°43'34"W BETWEEN SET MONUMENTS AS SHOWN.
- SURVEY FIELD NOTES FOR THIS PROJECT CAN BE FOUND IN CDOT FIELD BOOKS 32M CONTROL, S.H. 70.1 PROPERTY PINS, S.H. 70.2 PROPERTY PINS, AND ALIQUOT BOOK 30M.
- FOR PUBLISHED (NAD '83) COORDINATES AND/OR SUPPLEMENTAL SURVEY CONTROL PREPARED BY THE LUND PARTNERSHIP, INC., CONTACT: COLORADO DEPARTMENT OF TRANSPORTATION, REGION 6, 2000 SOUTH HOLLY STREET, DENVER, COLORADO 80222.
- VERTICAL CONTROL IS BASED ON NGS BENCHMARK C260, RESET 1983, ELEVATION = 5185.725 FEET. BENCHMARK C260 IS A BRASS DISK SET IN CONCRETE LOADING DOCK EAST SIDE OF BUILDING AT 4750 YORK STREET. DISK STAMPED "C260 RESET 1983 NGS WASHINGTON D.C."

FILING CERTIFICATION

DEPOSITED THIS 17TH DAY OF FEBRUARY, 1995, AT 1:04 P.M., IN BOOK 19 OF THE COUNTY SURVEYOR'S LAND SURVEY/RIGHT-OF-WAY SURVEYS AT PAGES 123-128, RECEPTION NUMBER L001832

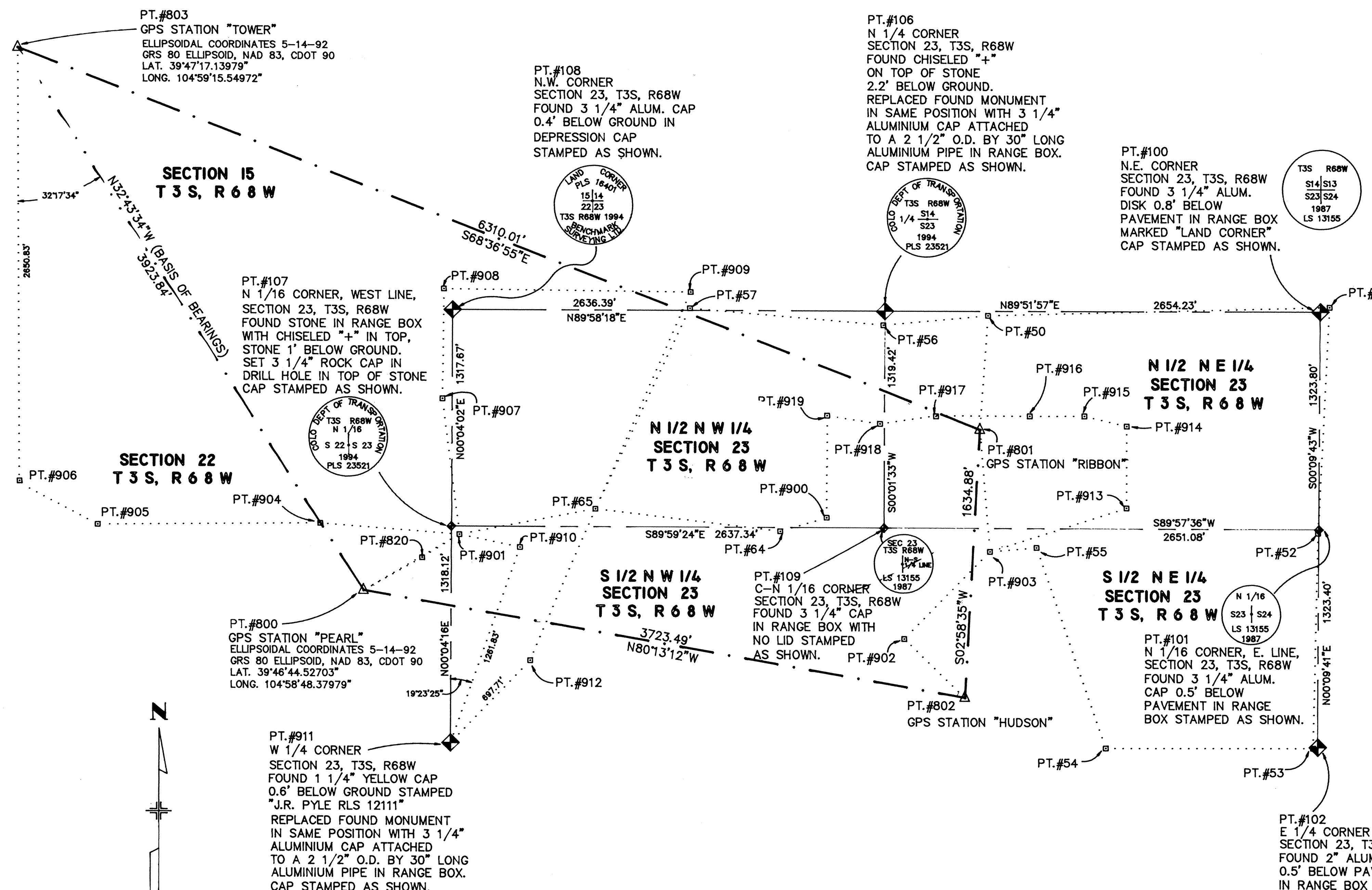
COUNTY SURVEYOR
BY "DEPUTY" COUNTY SURVEYOR

THE
LUND PARTNERSHIP, INC.

12265 W. BAYAUD AVE. SUITE 130
LAKEWOOD, COLORADO 80228
303 989-1461
JOB NO. 159.0102 JANUARY 16, 1995

SURVEY CERTIFICATE

Content and registration was done under my supervision and checking.
NAME: *John E. Johnson* P.L.S. NO. 23521
DATE: 01-21-95



COLORADO DEPARTMENT OF TRANSPORTATION
D.O.H. FORM NO. 126

SURVEY CONTROL DIAGRAM
CDOT PROJECT NO. IM-IR(CX) 70-4(145)
INTERSTATE 70 WASHINGTON STREET TO BRIGHTON BOULEVARD
LOCATED IN SECTIONS 15, 22 & 23, TOWNSHIP 3 SOUTH, RANGE 68 WEST,
OF THE 6TH PRINCIPAL MERIDIAN
CITY AND COUNTY OF DENVER

FED. ROAD REGION	DIVISION	PROJ. NO.	SHEET NO.	SHEET TOTALS
VIII	COLO.			
REVISIONS				

SURVEY CONTROL POINT TABULATION (IN FEET)
MODIFIED STATE PLANE COORDINATES
*(TABULATION INCLUDES ALL FOUND & UPGRADED ALIQUOT LAND CORNERS)

PT NO.	NORTHING	EASTING	ELEVATION	DESCRIPTION (SEE DETAILS FOR GRAPHIC DESCRIPTION)
50	1711161.490	3150676.338	5181.18	SET 18" LONG NO.5 REBAR WITH 1 1/2" ALUM. CAP STAMPED "COLO DEPT OF HWYS" AT THE S.E. CORNER OF 48TH AVE. & BRIGHTON BLVD.
51	1711220.985	3152758.100	5178.88	SET 18" LONG NO.5 REBAR WITH 1 1/2" ALUM. CAP STAMPED "COLO DEPT OF HWYS" ON THE EAST SIDE OF YORK ST. AT 48TH AVE. IN FRONT OF EATON STEEL CO.
52	1709845.661	3152691.810	5183.74	SET 18" LONG NO.5 REBAR WITH 1 1/2" ALUM. CAP STAMPED "COLO DEPT OF TRANS" FLUSH IN ASPH. MEDIAN SOUTH SIDE OF YORK ST. IN CENTER OF 46TH AVE.
53	1708539.032	3152665.198	5189.42	SET 18" LONG NO.5 REBAR WITH 1 1/2" ALUM. CAP STAMPED "COLO DEPT OF TRANS" AT N.W. CORNER OF 43RD AVE. AND YORK ST.
54	1708533.679	3151403.011	5189.35	SET 18" LONG NO.5 REBAR WITH 1 1/2" ALUM. CAP STAMPED "COLO DEPT OF TRANS" SOUTH SIDE 43RD AVE. 130± WEST OF RACE ST.
55	1709749.920	3150976.677	5195.66	SET 18" LONG NO.5 REBAR WITH 1 1/2" ALUM. CAP STAMPED "COLO DEPT OF TRANS" FLUSH WITH TBC ON SOUTH SIDE OF ON RAMP FROM BRIGHTON BLVD. TO I-70.
56	1711100.676	3150037.962	5178.96	SET P.K. NAIL & STEEL WASHER IN STOCKYARD PARKING AREA.
57	1711199.094	3148858.214	5153.60	SET 18" LONG NO.5 REBAR WITH 1 1/2" ALUM. CAP STAMPED "COLO DEPT OF TRANS" BETWEEN THE EAST SIDE OF NATIONAL WESTERN DRIVE AND ON THE WEST SIDE OF OF THE R.R. TRACKS.
64	1709844.402	3149413.637	5180.68	FOUND 3 1/4" CDOT BRASS CAP FLUSH IN CONCRETE SECTION OF 46TH AVE. MEDIAN 275± WEST OF HUMBOLDT ST. UNDER I-70. STAMPED TP64 LS NO. 20160.
65	1709978.949	3148286.877	5160.69	FOUND 3 1/4" CDOT ALUM. CAP CONCRETED IN GROUND 150± NORTH OF 46TH AVE. AND APPROX. 100' EAST OF NATIONAL WESTERN ROAD. CAP STAMPED TP65 WSSI LS NO. 20160.
*100	1711192.929	3152700.844		N.E. CORNER, SECTION 23, T3S, R68W, 6TH P.M., FOUND 3 1/4" ALUM. CAP 0.8' BELOW PAVEMENT IN RANGE BOX MARKED "LAND CORNER". CAP STAMPED 1987 LS 13155.
*101	1709869.133	3152697.101		N 1/16 CORNER, EAST LINE, SECTION 23, T3S, R68W, 6TH P.M., FOUND 3 1/4" ALUM. CAP 0.5' BELOW PAVEMENT IN RANGE BOX MARKED "LAND CORNER". CAP STAMPED 1987 LS 13155.
*102	1708545.737	3152693.371		E 1/4 CORNER, SECTION 23, T3S, R68W, 6TH P.M., FOUND 2 1/2" ALUM. CAP 0.5' BELOW PAVEMENT IN RANGE BOX WITH NO LID. CAP STAMPED 1/4 COR. MOST OF CAP IS UNREADABLE. UPGRADED MONUMENT AS SHOWN ON SHEET 1 OF 6.
*106	1711186.711	3150046.618		N 1/4 CORNER, SECTION 23, T3S, R68W, 6TH P.M., FOUND CHISELED "+" ON TOP OF STONE 2.2' BELOW GROUND. UPGRADED MONUMENT AS SHOWN ON SHEET 1 OF 6.
*107	1709867.741	3147408.679		N 1/16 CORNER, W. LINE, SECTION 23, T3S, R68W, 6TH P.M., FOUND CHISELED "+" ON TOP OF STONE 1' BELOW GROUND IN RANGE BOX. UPGRADED MONUMENT AS SHOWN ON SHEET 1 OF 6.
*108	1711185.408	3147410.227		N.W. CORNER, SECTION 23, T3S, R68W, 6TH P.M., FOUND 3 1/4" ALUM. CAP 0.4' BELOW GROUND CAP STAMPED AS SHOWN ON SHEET 1 OF 6.
*109	1709867.286	3150046.020		C-N 1/16TH CORNER, SECTION 23, T3S, R68W, 6TH P.M., FOUND 3 1/4" ALUM. CAP IN RANGE BOX WITH NO LID, CAP STAMPED LS 13155.
800	1709470.212	3146874.516	5145.90	SET 3 1/4" CDOT ALUM. CAP IN RANGE BOX IN CUL-DE-SAC ON PEARL ST. JUST NORTH OF 45TH AVE. CAP STAMPED GPS "PEARL" LPI 1992 1.045006.
801	1710470.394	3150628.788	5180.50	SET 3 1/4" CDOH ALUM. CAP FLUSH WITH CONCRETE IN EAST DRIVEWAY ENTRANCE TO 7-11 NORTH SIDE OF DRIVE AT BRIGHTON BLVD. AND 47TH AVE. CAP STAMPED GPS "RIBBON" LPI 1992 1.047017.
802	1708837.719	3150543.897	5184.87	SET 3 1/4" CDOH ALUM. CAP IN RANGE BOX 50± EAST OF END OF 44TH AVE. EAST OF BRIGHTON BLVD. CAP STAMPED GPS "HUDSON" LPI 1992 1.044018.
803	1712771.198	3144753.195		SET 3 1/4" CDOH ROCK CAP IN SIDEWALK CAP STAMPED "TOWER" 1.000050
820	1709674.384	3147231.210	5147.53	SET 18" LONG NO.5 REBAR WITH 2" ALUM. CAP STAMPED "LPI CONTROL LEWIS" UNDER I-70 VIADUCT 6± EAST OF EAST FLOWLINE FOR WASHINGTON ST.
900	1709929.556	3149696.902	5181.62	SET 1 1/2" ALUM. CAP ON 15" NO.5 REBAR AT THE N.W. CORNER OF HUMBOLDT ST. AND 46TH AVE. CAP STAMPED LPI CONTROL POINT.
901	1709817.470	3147458.504	5157.76	SET 1 1/2" ALUM. CAP ON 15" NO.5 REBAR NORTH OF WESTBOUND I-70 OFF-RAMP TO WASHINGTON ST. (WEST OF PLATTE RIVER). CAP STAMPED LPI CONTROL DEN-COL.
902	1709190.912	3150172.237	5184.98	SET 1 1/2" ALUM. CAP ON 15" NO.5 REBAR IN ASPHALT AT S.W. CORNER OF 44TH ST. AND BRIGHTON BLVD. CAP STAMPED LPI CONTROL FIRESTONE.
903	1709723.879	3150692.137	5182.71	SET 1 1/2" ALUM. CAP ON 15" NO.5 REBAR IN ASPHALT ISLAND JUST NORTH OF ON-RAMP FOR EASTBOUND I-70 FROM BRIGHTON BLVD. CAP STAMPED LPI CONTROL "ISLAND".
904	1709883.925	3146598.508		SET CHISELED "I" IN SIDEWALK AT THE N.E. COR. OF 46TH AVE. & PENNSYLVANIA ST.
905	1709869.404	3145252.406		SET BOATNAIL & WASHER IN ASPHALT AT THE S.W. CORNER OF LINCOLN & 46TH AVE.
906	1710120.448	3144773.248		SET 18" LONG NO.5 REBAR WITH 1 1/2" ALUM. CAP STAMPED "COLO DEPT OF TRANS"

SURVEY CONTROL POINT TABULATION (IN FEET)
MODIFIED STATE PLANE COORDINATES
*(TABULATION INCLUDES ALL FOUND & UPGRADED ALIQUOT LAND CORNERS)

PT NO.	NORTHING	EASTING	ELEVATION	DESCRIPTION (SEE DETAILS FOR GRAPHIC DESCRIPTION)
907	1710643.848	3147350.779	5144.48	SET 1 1/2" ALUM. CAP ON 18" LONG NO.5 REBAR AT THE N.W. CORNER OF THE 7-11 STORE AT 4708 WASHINGTON ST. CAP STAMPED COLO. DEPT. OF TRANS. LPI 1.047007
908	1711314.189	3147356.916	5143.23	SET 1 1/2" ALUM. CAP ON 18" LONG NO.5 REBAR IN FRONT OF SIDEWALK AT 4825 WASHINGTON ST. CAP STAMPED COLO. DEPT. OF TRANS. 1.048007.
909	1711299.636	3148862.405	5153.85	SET 1 1/2" ALUM. CAP ON 18" LONG NO.5 REBAR ON THE WEST SIDE OF NATIONAL WESTERN DRIVE, SO. OF STOCK SHOW PARKING STRUCTURE AT 4867 NATIONAL WESTERN DRIVE. CAP STAMPED COLO. DEPT. OF TRANS. 1.048013.
910	1709739.359	3147827.449	5184.62	SET 1 1/2" ALUM. CAP ON 18" LONG NO.5 REBAR ON THE NORTH SIDE OF I-70 AT THE EAST BRIDGE ABUTMENT OVER THE PLATTE RIVER. STAMPED 1.046008.
*911	1708549.621	3147407.046		W 1/4 CORNER, SECTION 23, T3S, R68W, 6TH P.M., FOUND 1 1/4" YELLOW CAP 0.6' BELOW GROUND CAP STAMPED J.R. PYLE RLS 12111. MONUMENT UPGRADED AS SHOWN ON SHEET 1 OF 6.
912	1709052.270	3147890.927	5171.96	SET 1 1/2" ALUM. CAP ON 18" LONG NO.5 REBAR IN THE PARK WEST OF COLISEUM. CAP STAMPED COLO. DEPT. OF TRANS. LPI 1.044009.
913	1709996.219	3151524.667	5181.71	SET 3 1/4" CDOT ROCK CAP IN SIDEWALK AT 4617 RACE ST. CAP STAMPED COLO. DEPT. OF TRANS. 1994 LPI 1.046020.
914	1710496.465	3151523.893	5179.64	SET 3 1/4" CDOT ROCK CAP IN SIDEWALK AT S.W. COR. OF 47TH & RACE ST. CAP STAMPED COLO. DEPT. OF TRANS. 1994 LPI 1.047020.
915	1710556.053	3151266.082	5179.24	SET 3 1/4" CDOT ROCK CAP IN SIDEWALK AT N.E. COR. OF 47TH & HIGH ST. CAP STAMPED COLO. DEPT. OF TRANS. 1994 LPI 1.047019.
916	1710554.771	3150932.426	5179.90	SET 3 1/4" CDOT ROCK CAP IN SIDEWALK AT N.W. COR. OF 47TH & WILLIAMS ST. CAP STAMPED COLO. DEPT. OF HIGHWAYS 1994 LPI 1.047018.
917	1710556.595	3150366.322	5181.03	SET 3 1/4" CDOT ROCK CAP IN SIDEWALK AT N.E. COR. OF 47TH & BALDWIN ST. CAP STAMPED COLO. DEPT. OF HIGHWAYS 1994 LPI 1.047165.
918	1710504.244	3150020.070	5182.39	SET 3 1/4" CDOT ROCK CAP IN SIDEWALK AT S.W. COR. OF 47TH & FRANKLIN ST. CAP STAMPED COLO. DEPT. OF HIGHWAYS 1994 LPI 1.047016.
919	1710552.428	3149697.360	5179.51	SET 3 1/4" CDOT ROCK CAP IN SIDEWALK AT N.W. COR. OF 47TH & HUMBOLDT ST. CAP STAMPED COLO. DEPT. OF HIGHWAYS 1994 LPI 1.047015.

SURVEY CONTROL POINT TABULATION (IN METERS)
*(TABULATION INCLUDES ALL FOUND & UPGRADED ALIQUOT LAND CORNERS)

PT NO.	NORTHING	EASTING	ELEVATION
50	521563.065	960328.069	1579.23
51	521581.199	960962.591	1578.53
52	521162.000	960942.386	1580.01
53	520763.739	960934.274	1581.74
54	520762.107	960549.559	1581.72
55	521132.818	960419.612	1583.64
56	521544.529	960133.491	1578.55
57	521574.527	959773.903	1570.82
64	521161.616	959943.197	1579.07
65	521202.626	959599.759	1572.98
*100	521572.648	960945.139	
*101	521169.154	960943.998	
*102	520765.782	960942.862	
*106	521570.753	960136.129	
*107	521168.730	959332.084	
*108	521570.356	959332.556	
*109	521168.591	960135.947	
800	521047.563	959169.271	1568.47
801	521352.419	960313.575	1579.02
802	520854.779	960287.700	1580.35
803	522053.705	958522.691	
820	521109.794	959277.992	1568.97

PT NO.	NORTHING	EASTING	ELEVATION
900	521187.571	960029.536	1579.36
901	521153.407	959347.271	1572.09
902	520962.432	960174.418	1580.39
903	521124.881	960332.884	1579.69
904	521173.663	959085.143	
905	521169.237	958674.851	
906	521245.755	958528.803	
907	521405.288	959314.436	1568.04
908	521609.608	959316.307	1567.66
909	521605.172	959775.181	1570.90
910	521129.599	959459.725	1580.28
*911	520766.966	959331.586	
912	520920.174	959479.074	1576.42
913	521207.890	960586.640	1579.39
914	521360.365	960586.404	1578.76
915	521378.528	960507.823	1578.64
916	521378.137	960406.124	1578.84
917	521378.693	960233.576	1579.18
918	521362.736	960128.038	1579.60
919	521377.423	960029.676	1578.72

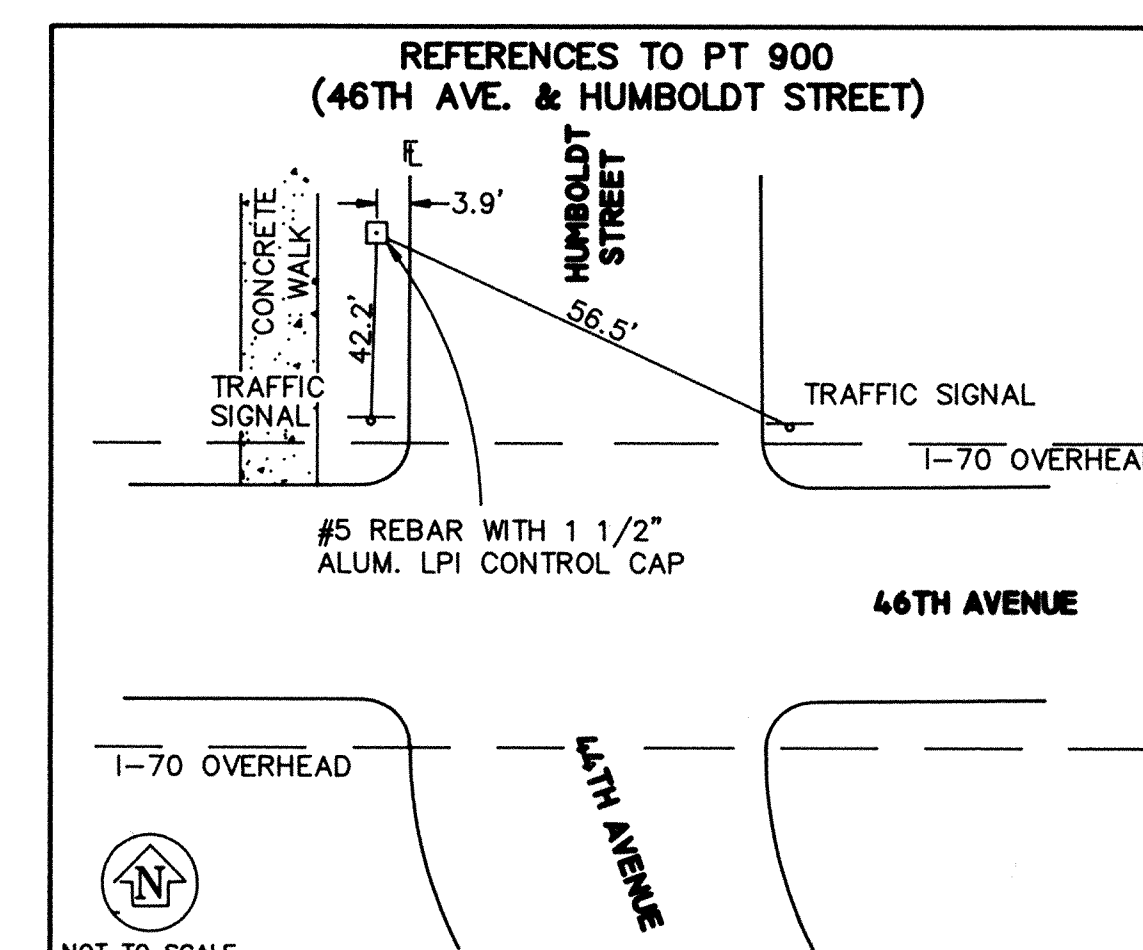
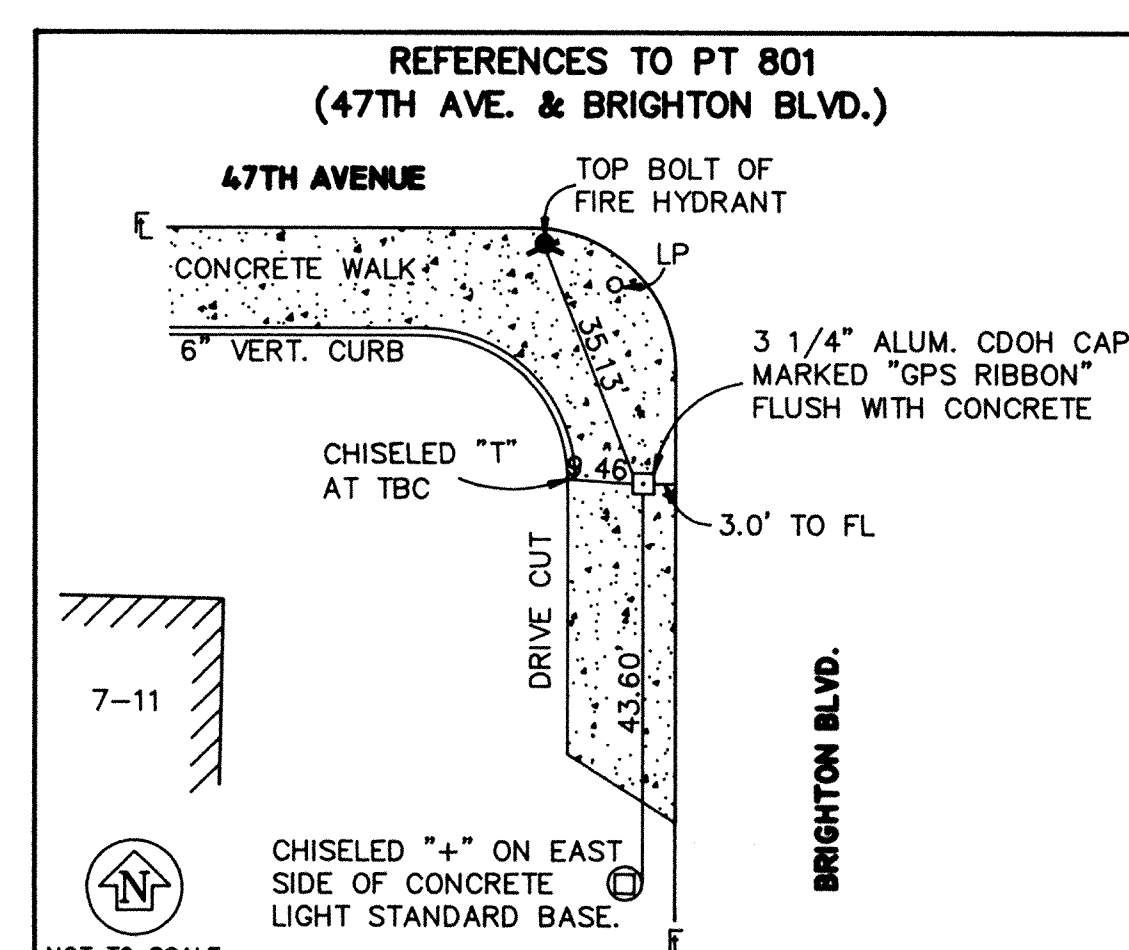
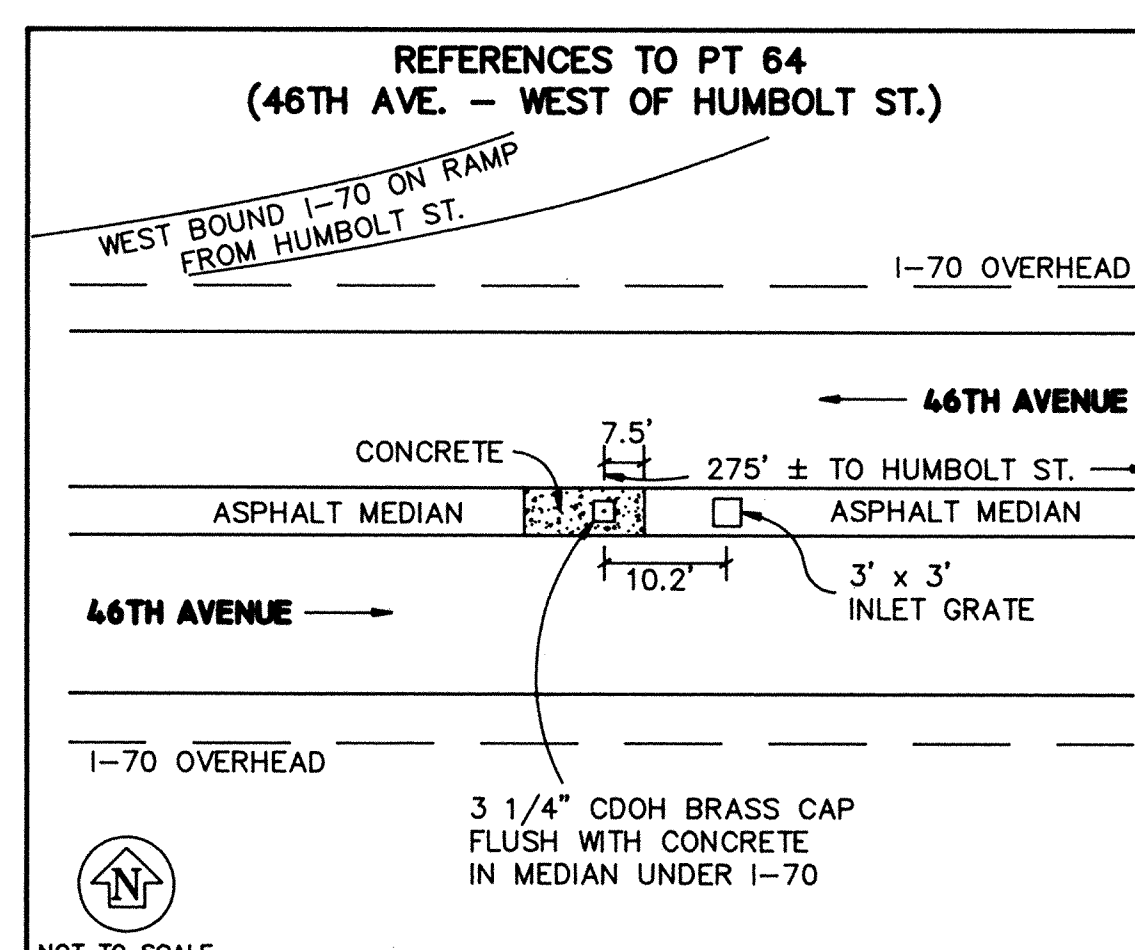
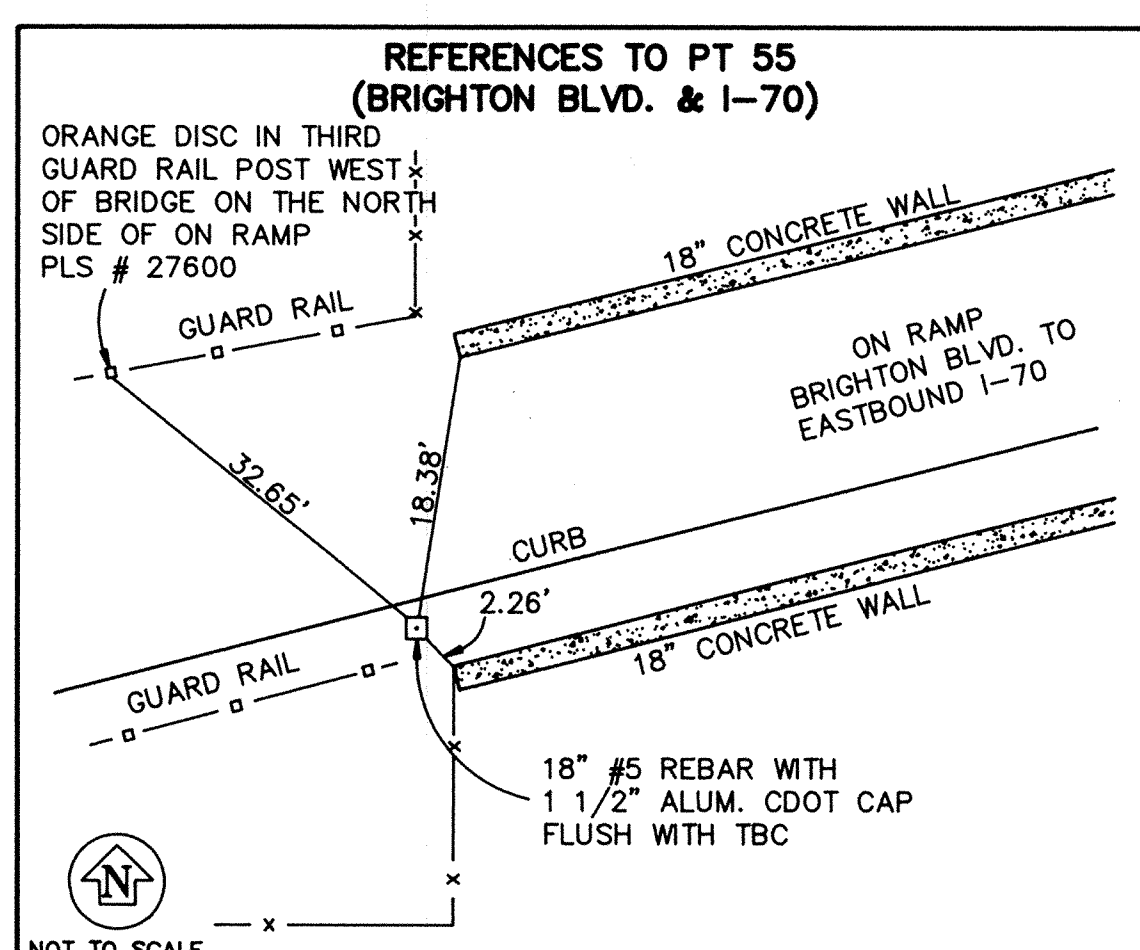
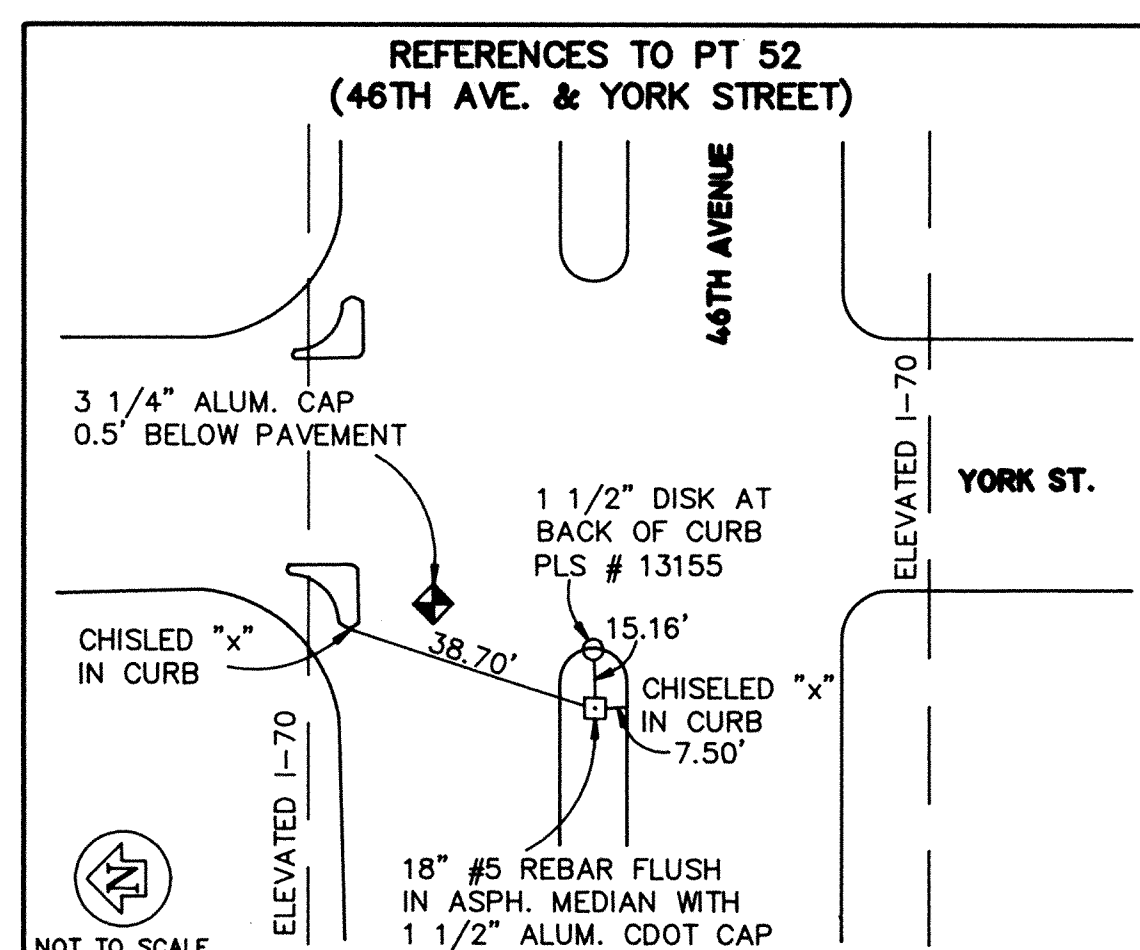
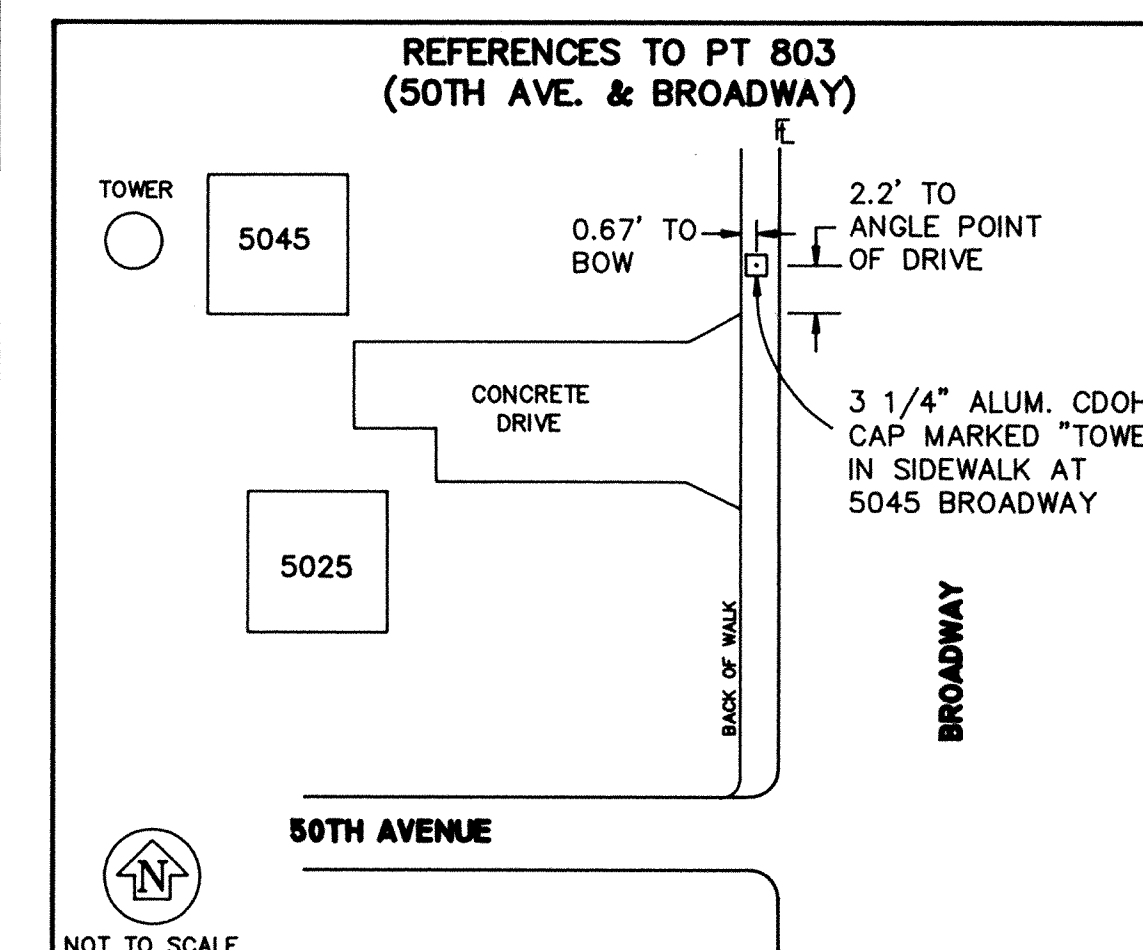
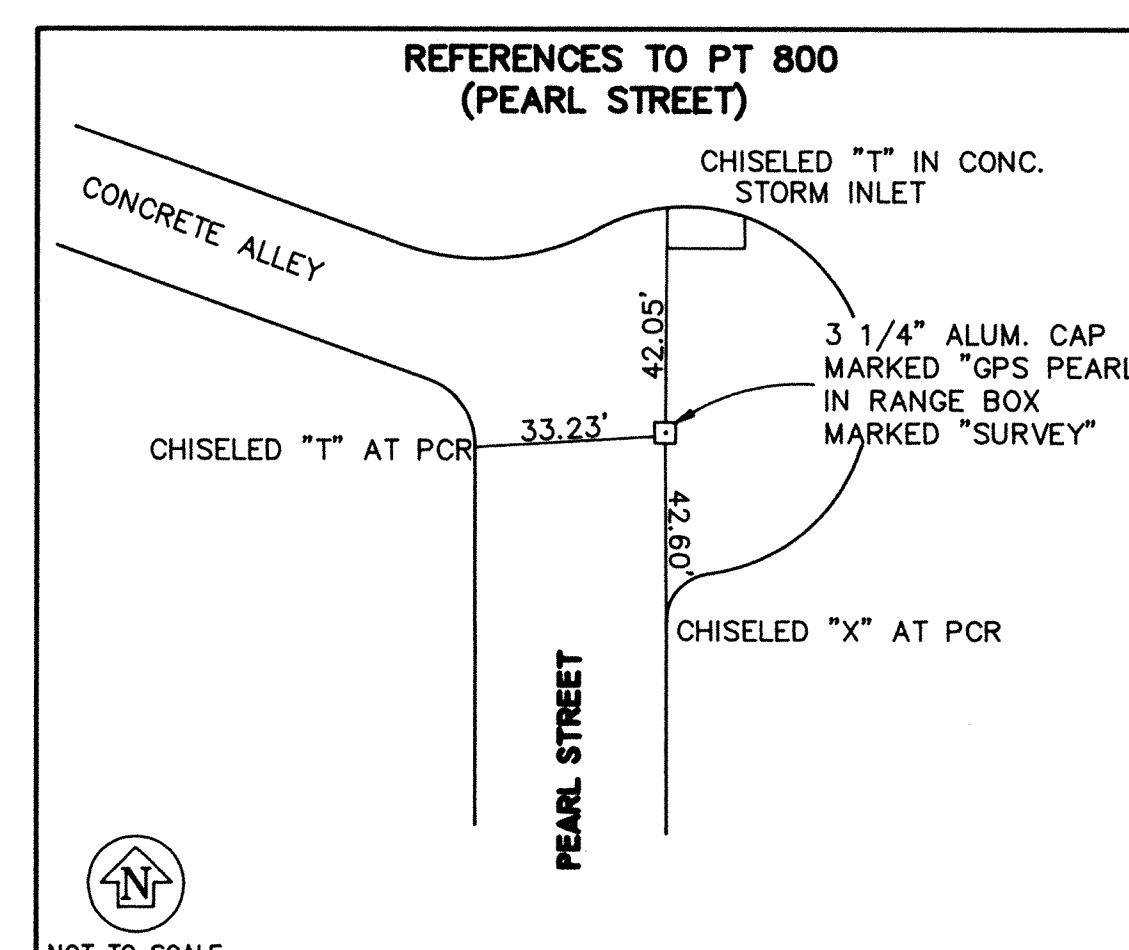
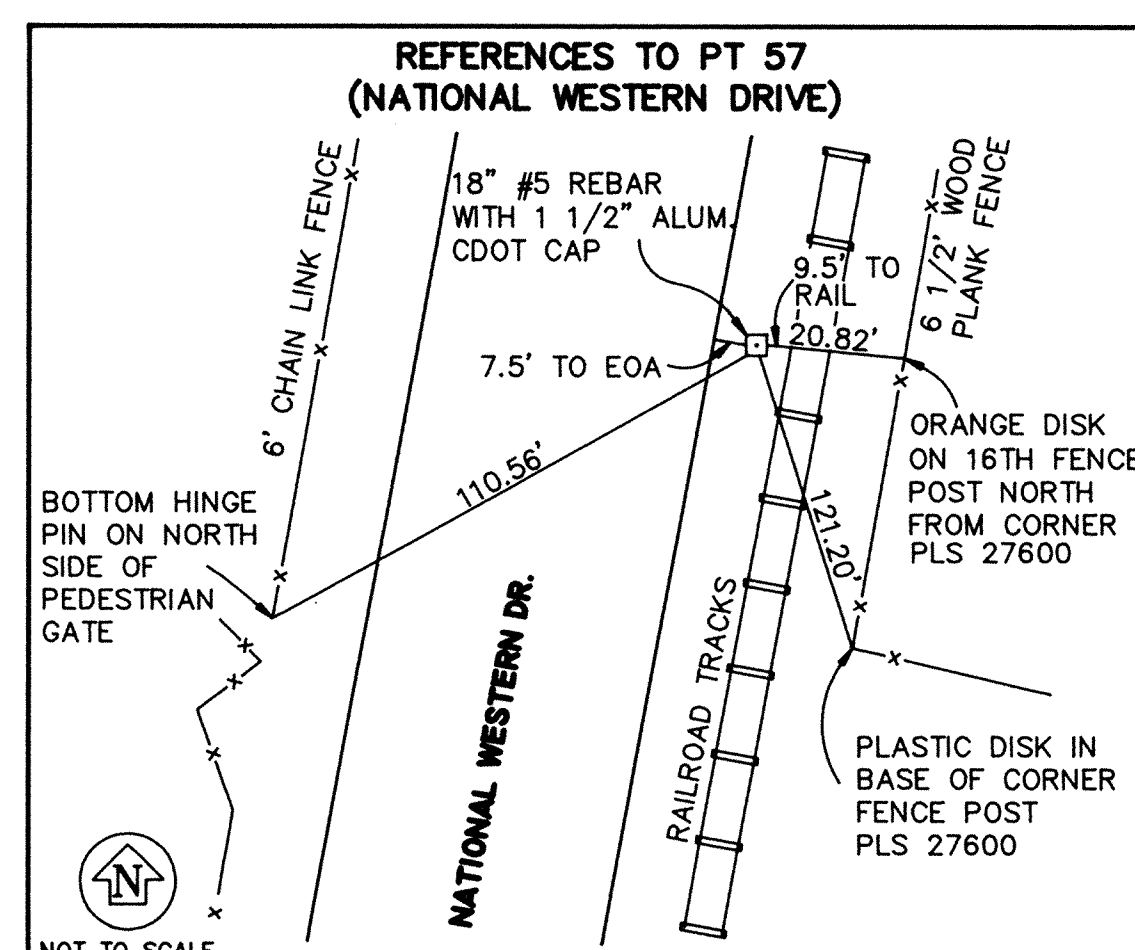
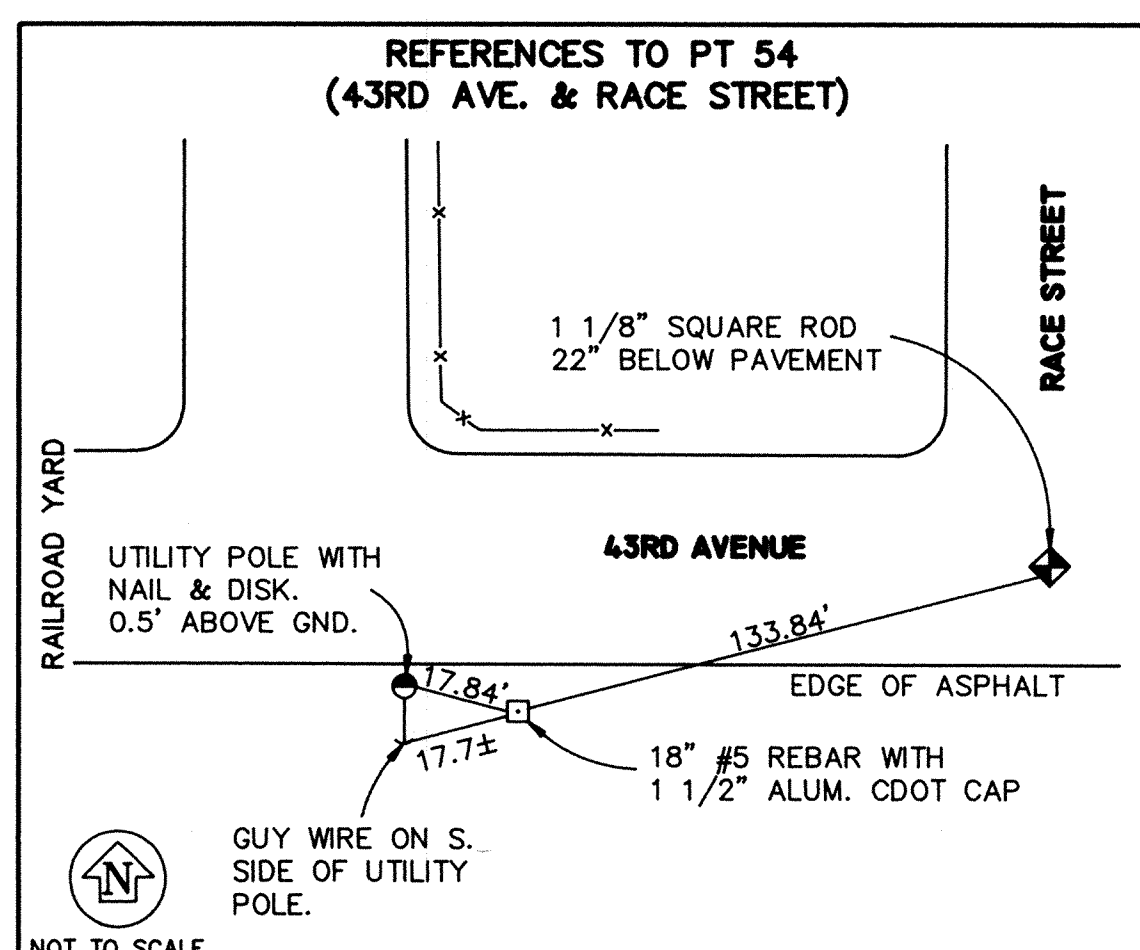
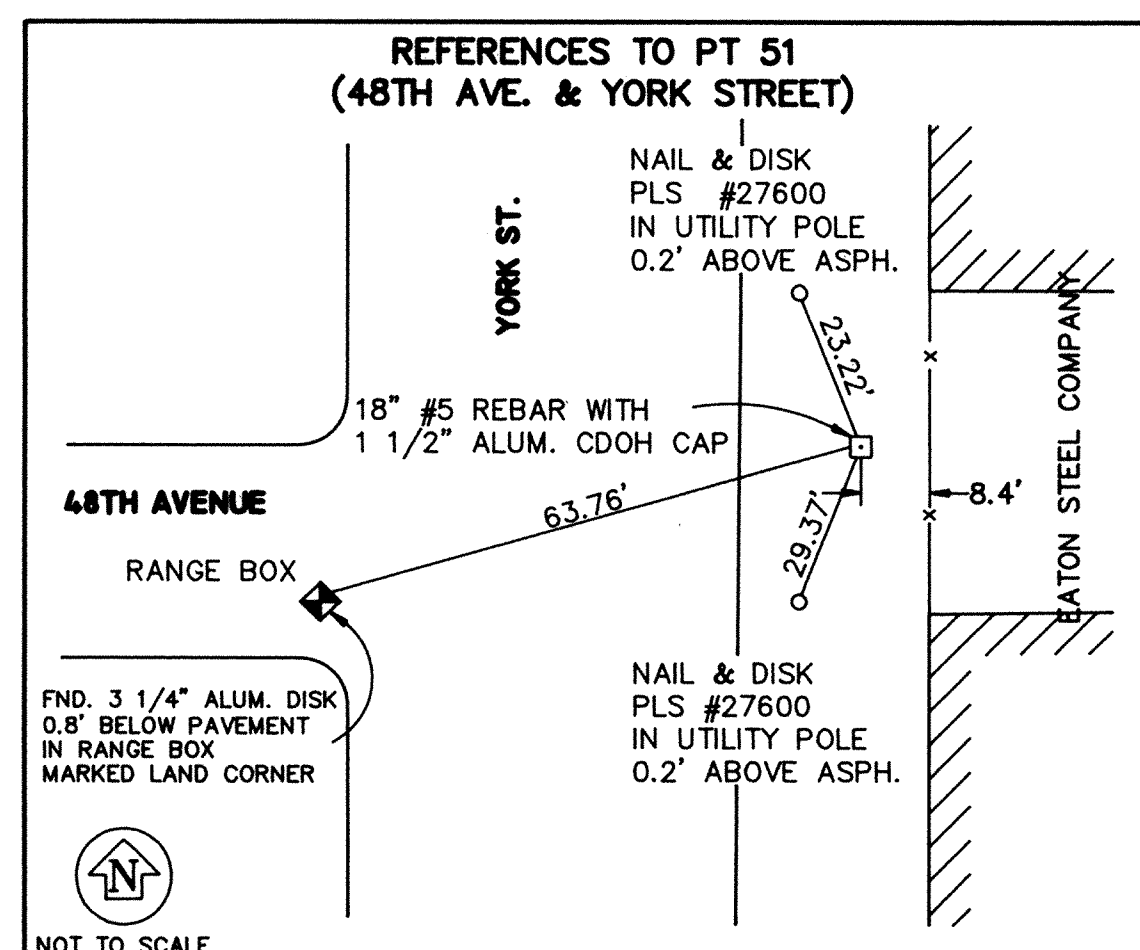
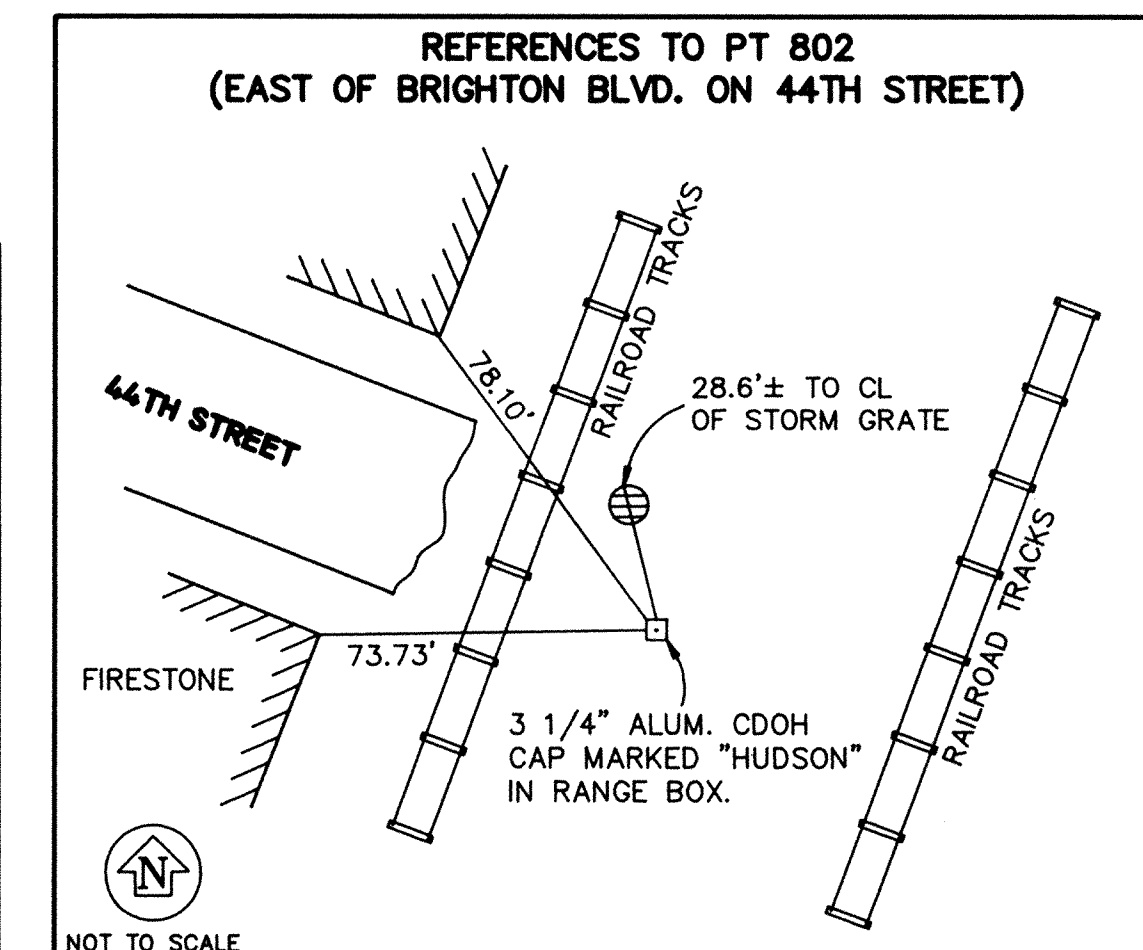
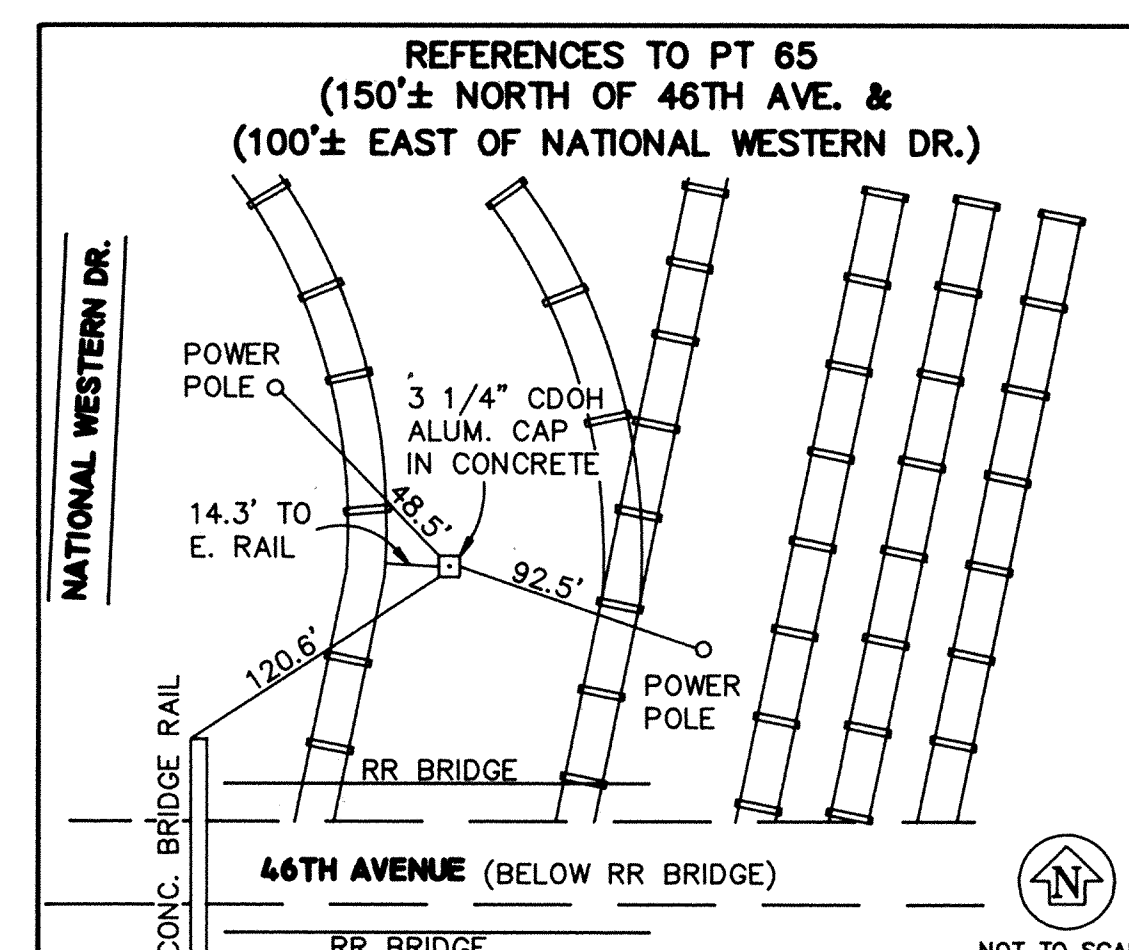
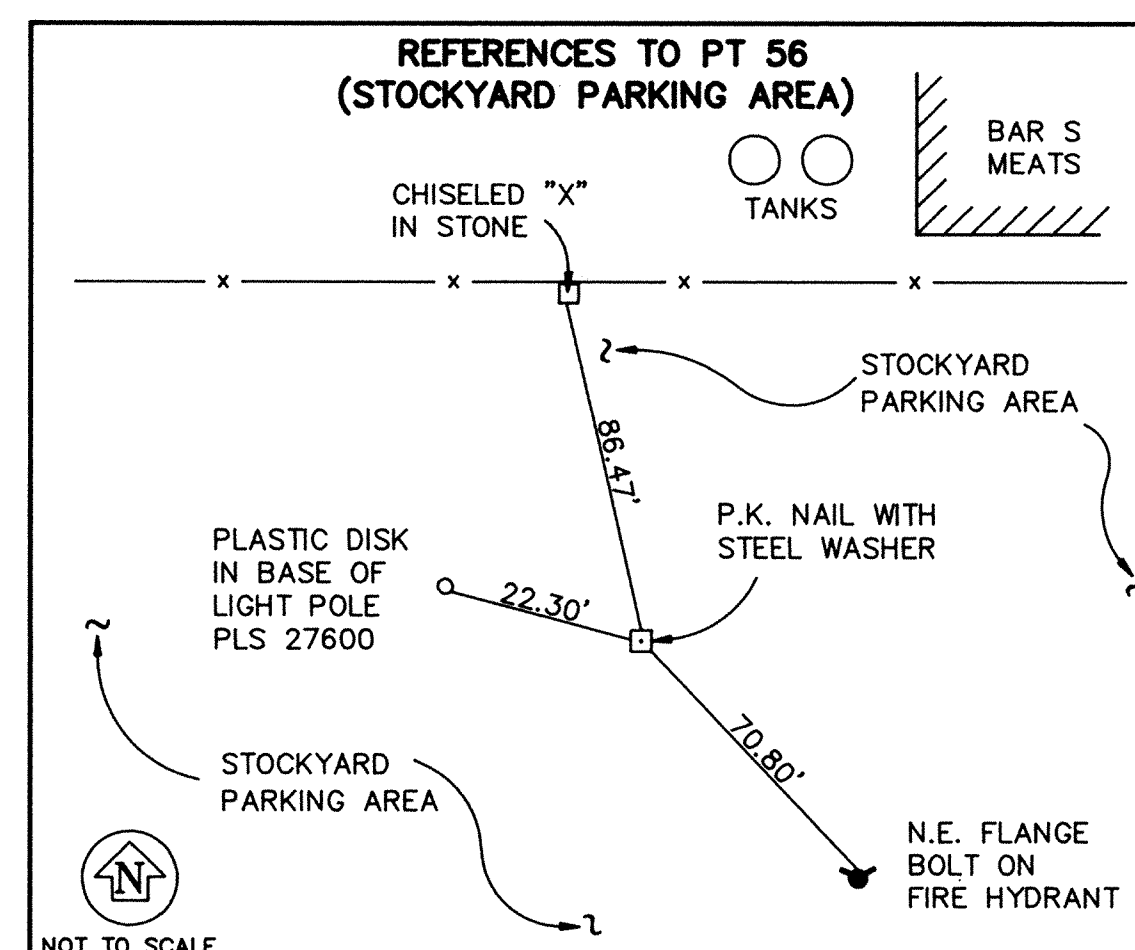
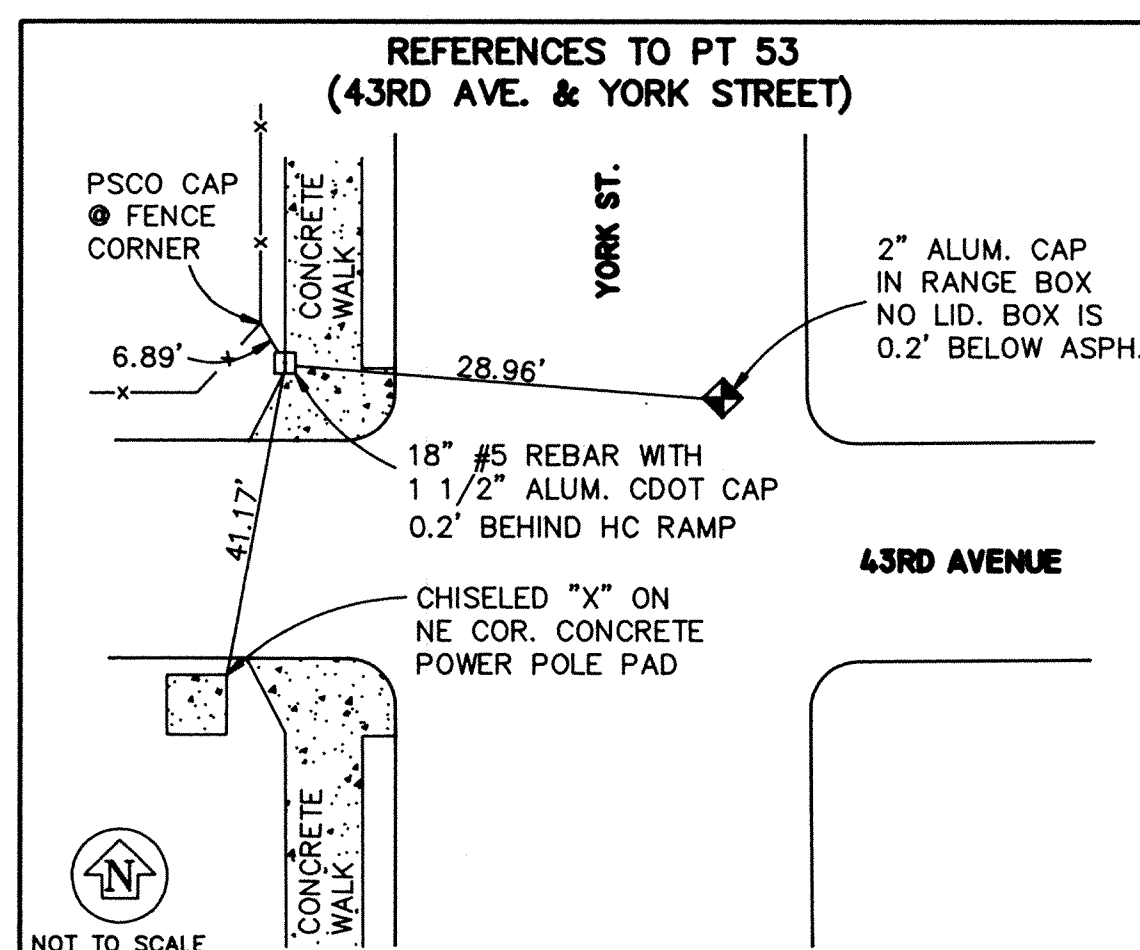
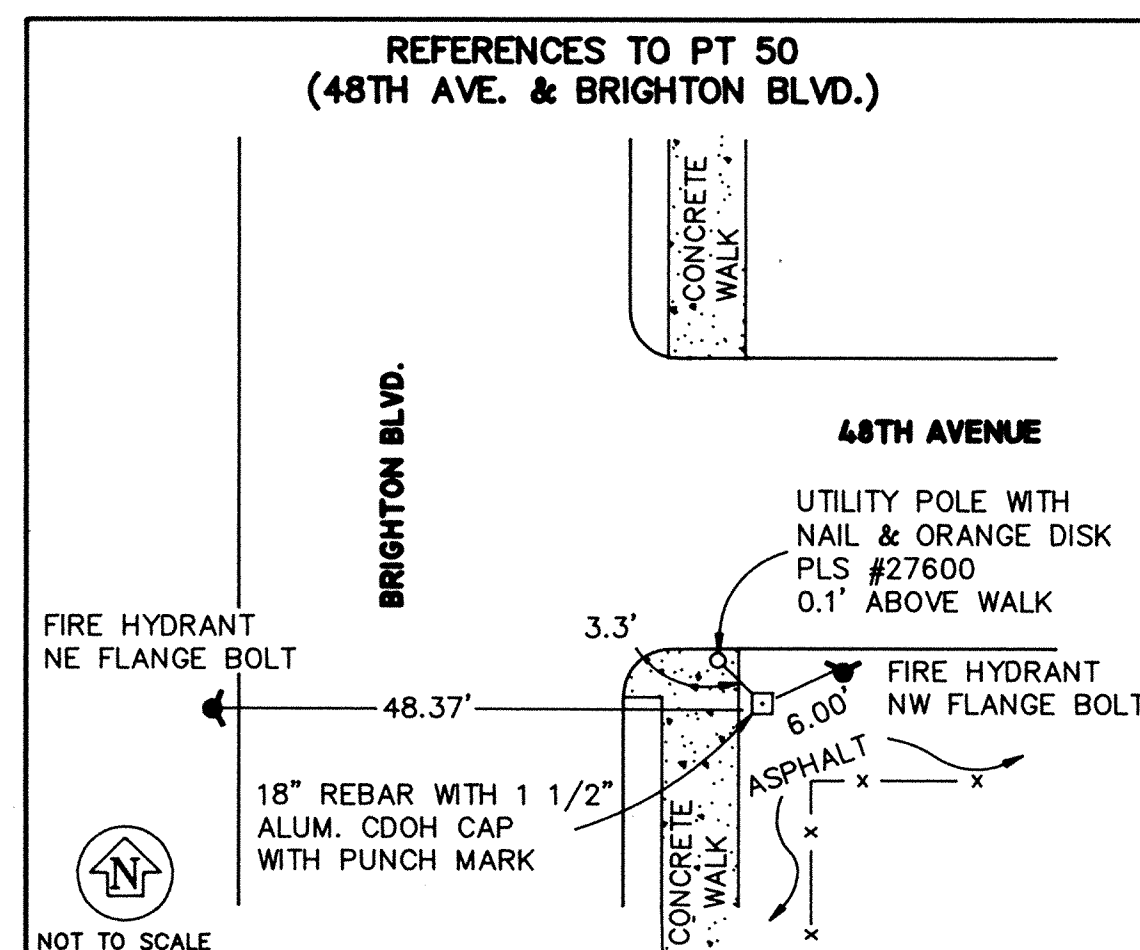
THE
LUND PARTNERSHIP, INC.
12265 W. BAYAUD AVE. SUITE 130
LAKEWOOD, COLORADO 80228
303 989-1461
JOB NO. 159.0102 JANUARY 16, 1995

S-ACC.# 88102

SURVEY CONTROL DIAGRAM

CDOT PROJECT NO. IM-IR(CX) 70-4(145)
INTERSTATE 70 WASHINGTON STREET TO BRIGHTON BOULEVARD
LOCATED IN SECTIONS 15, 22 & 23, TOWNSHIP 3 SOUTH, RANGE 68 WEST,
OF THE 6TH PRINCIPAL MERIDIAN
CITY AND COUNTY OF DENVER

FED. ROAD REGION	DIVISION	PROJ. NO.	SHEET NO.	SHEET TOTALS
VIII	COLO.			
REVISIONS				

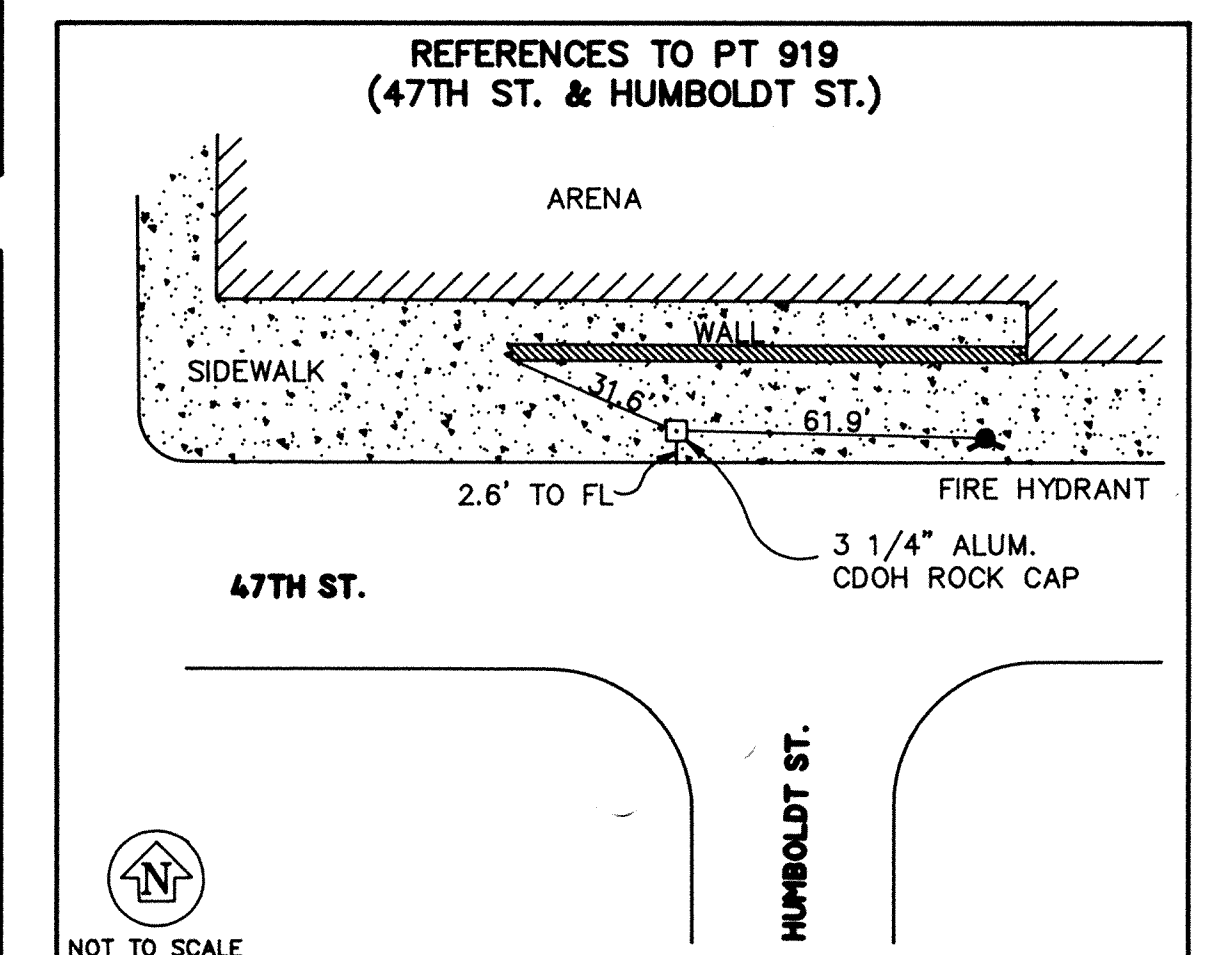
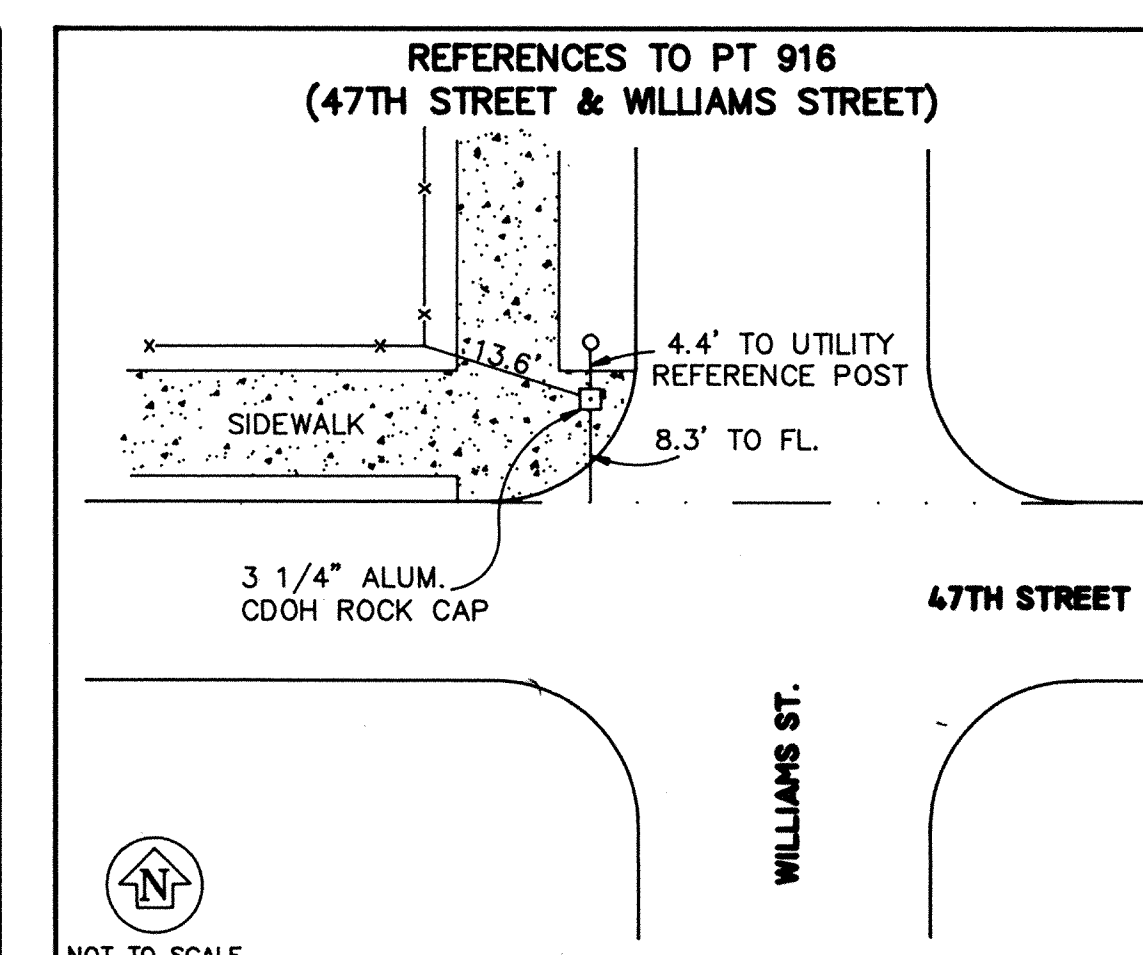
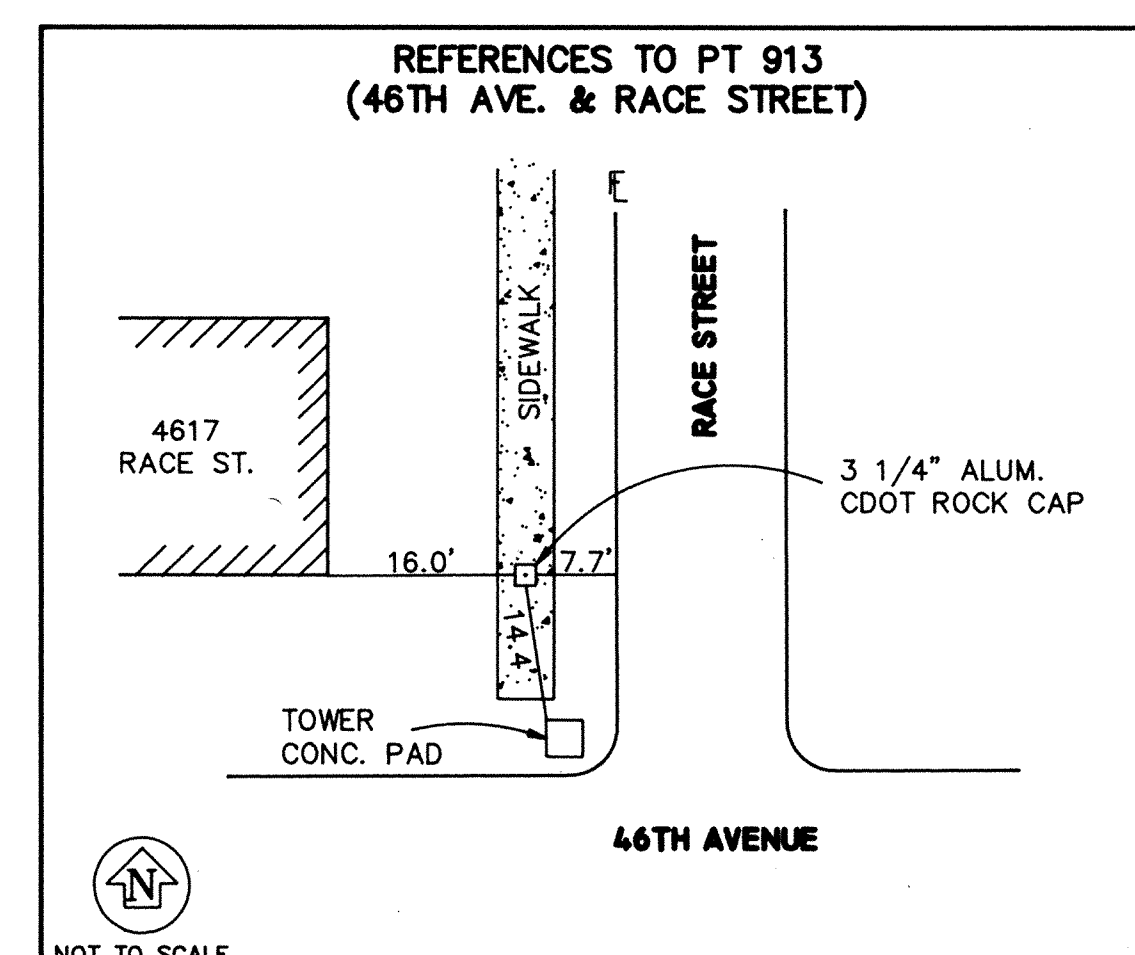
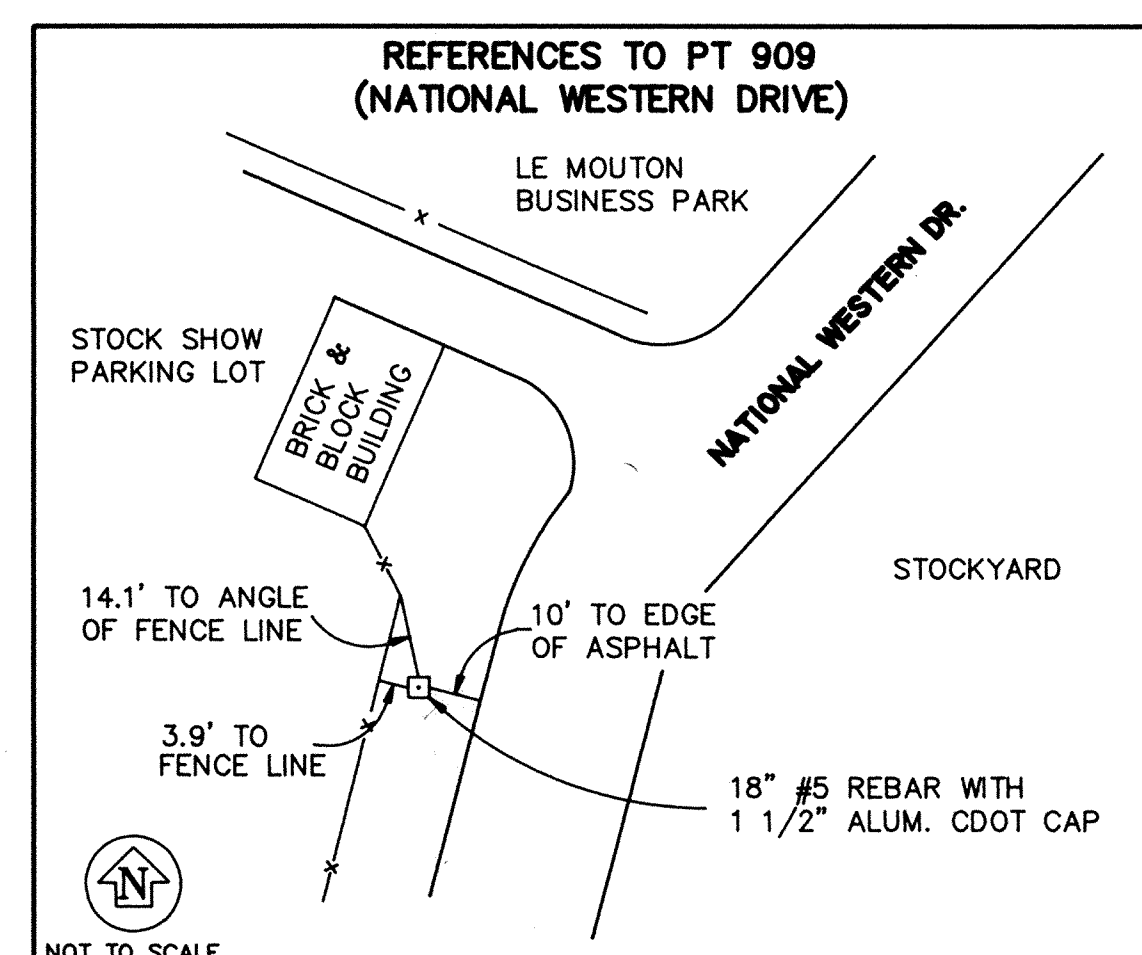
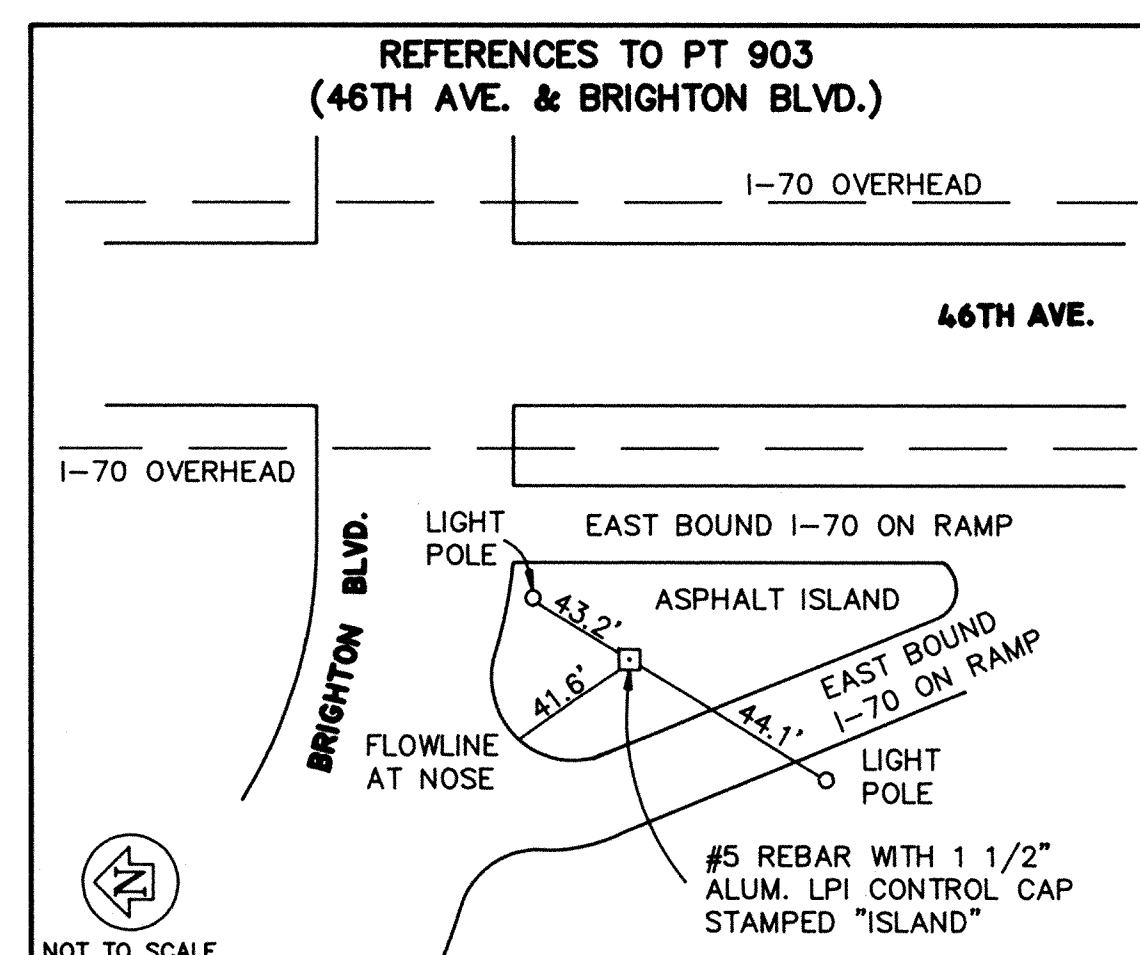
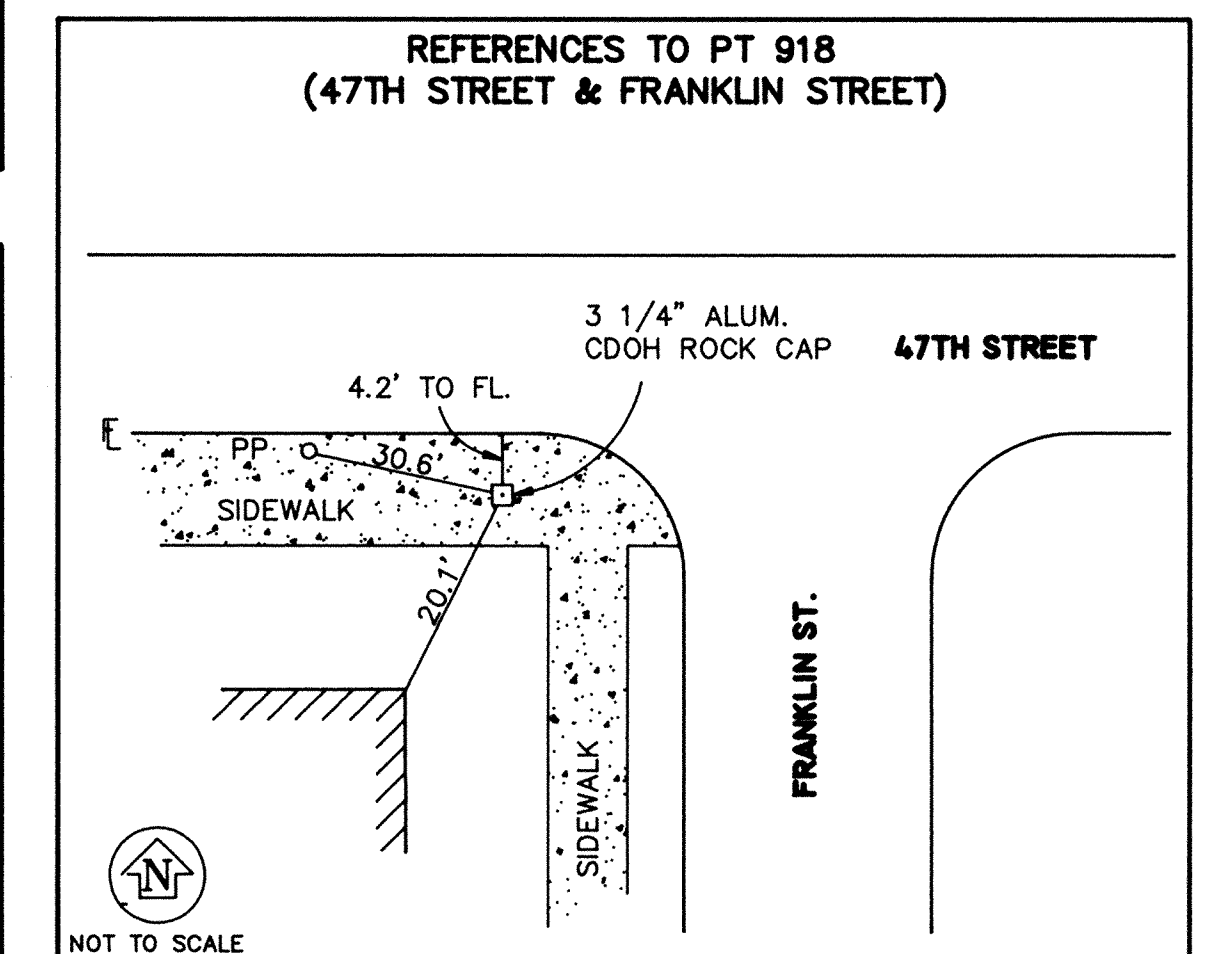
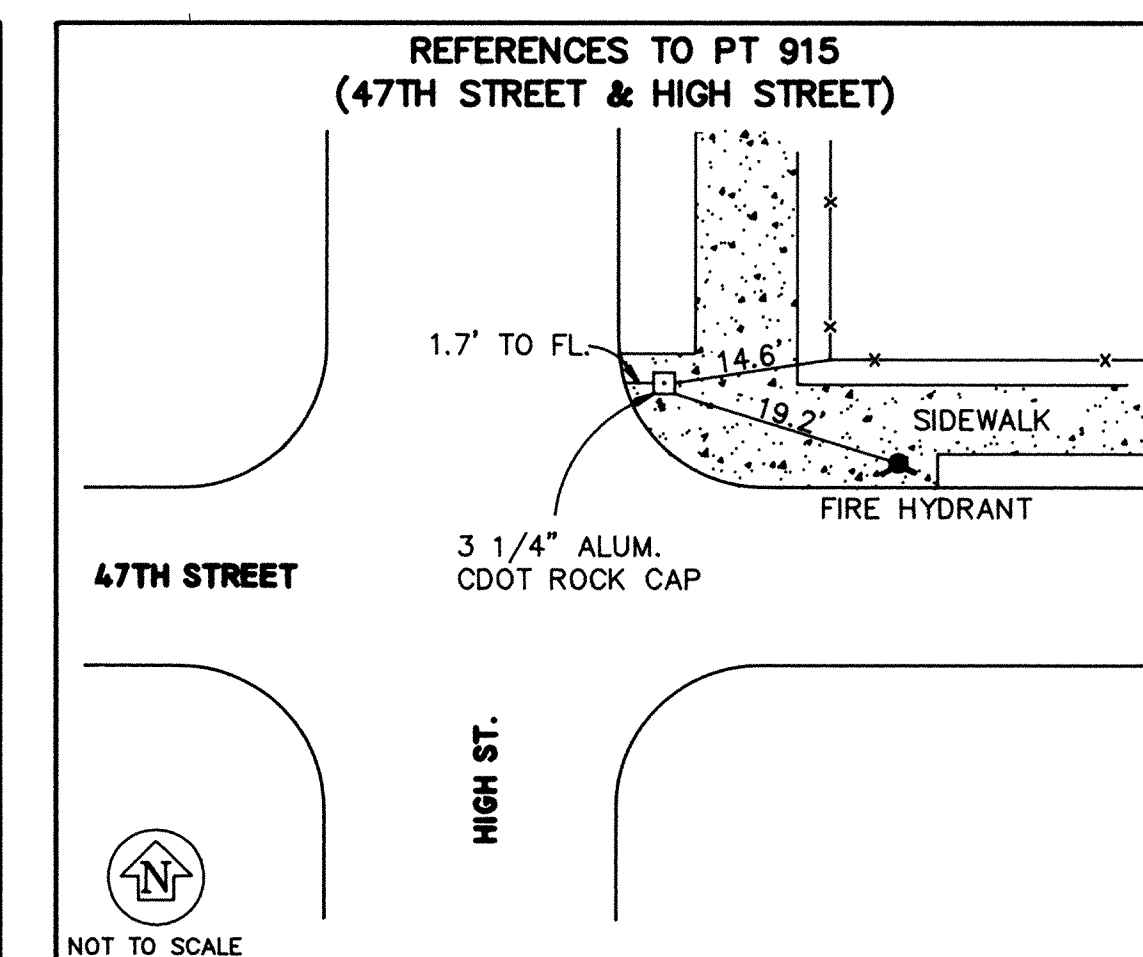
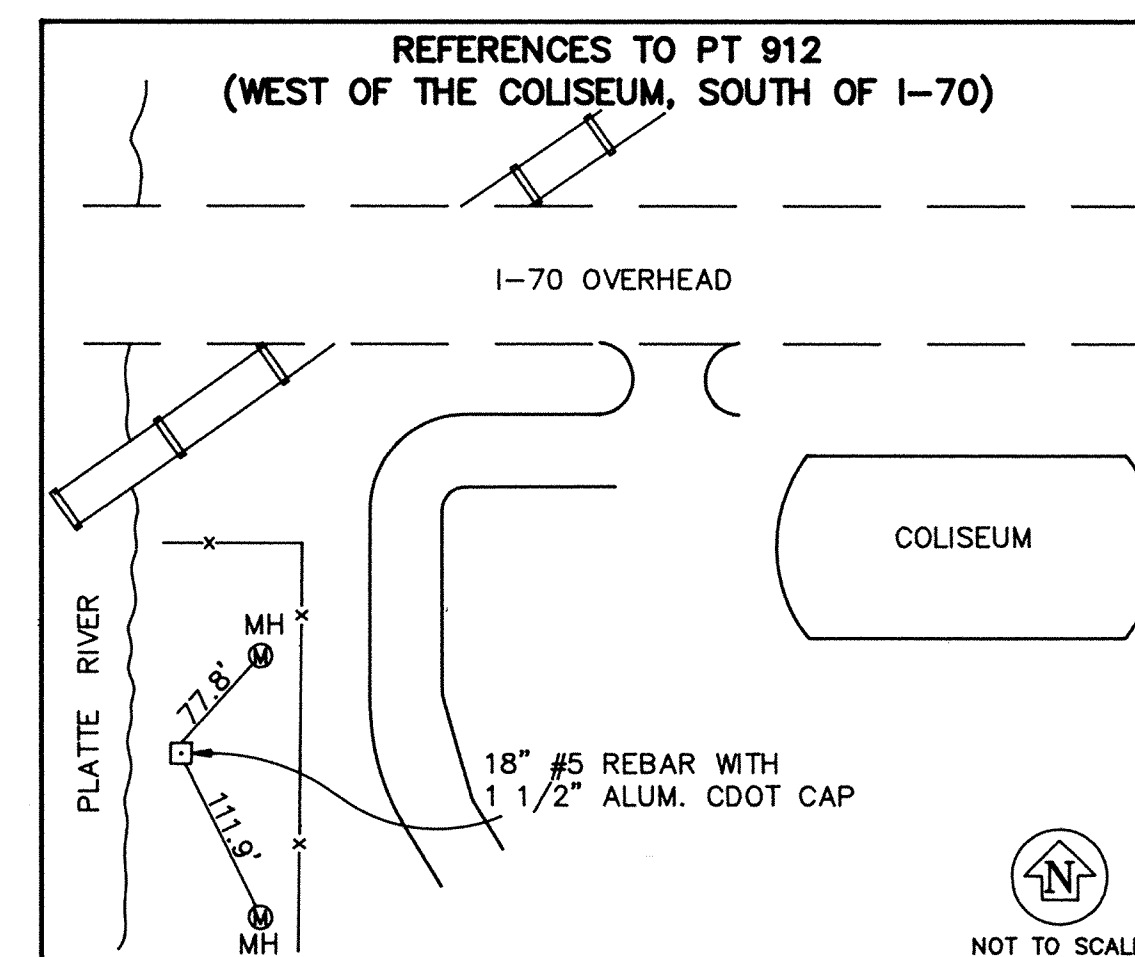
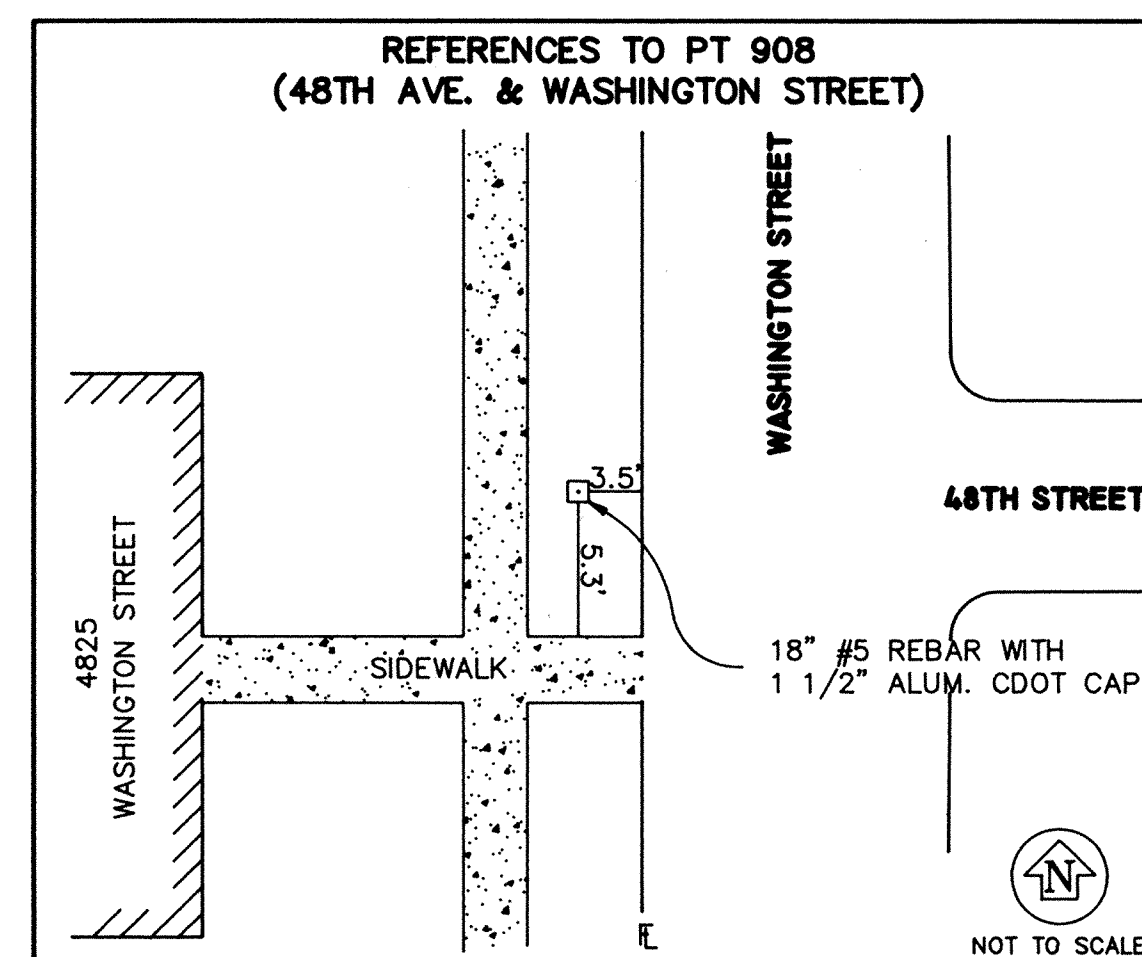
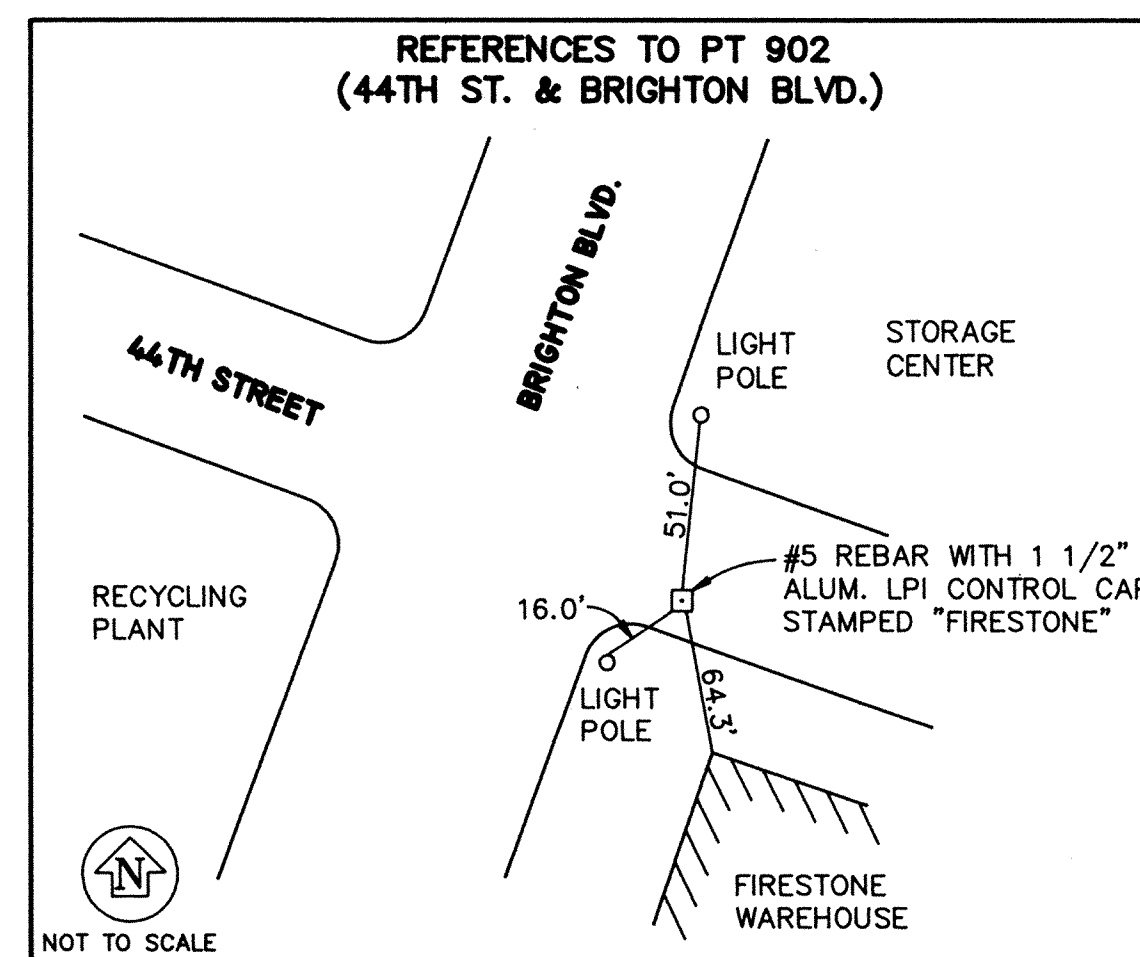
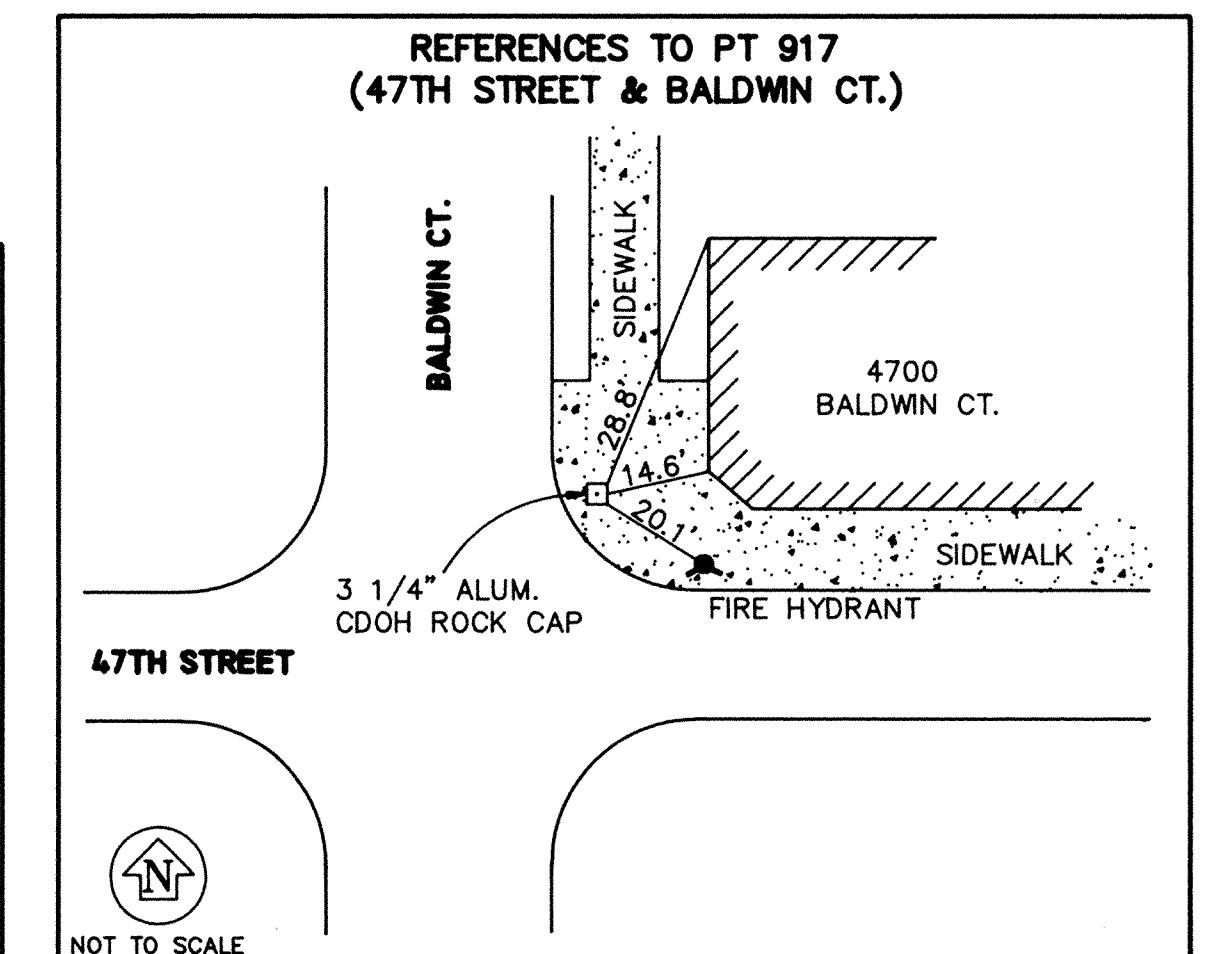
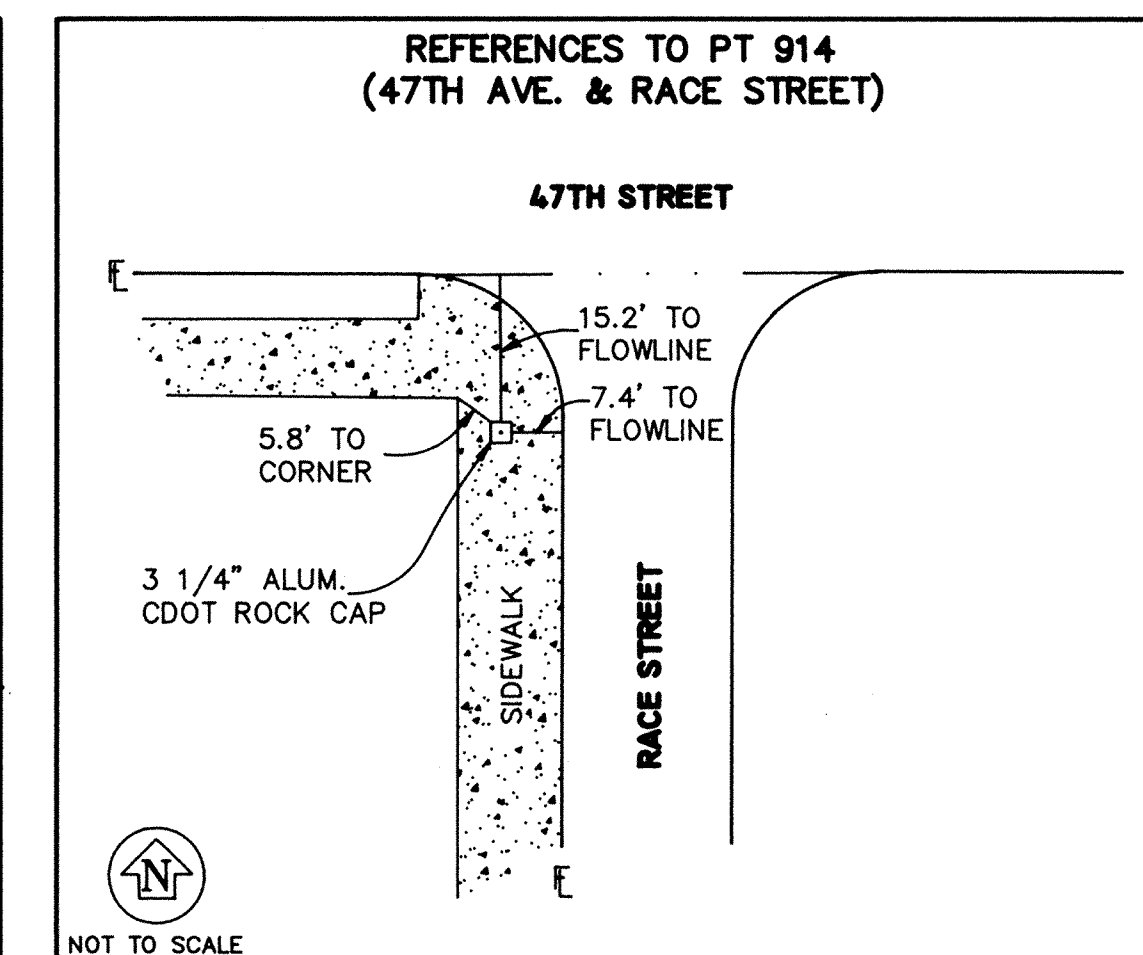
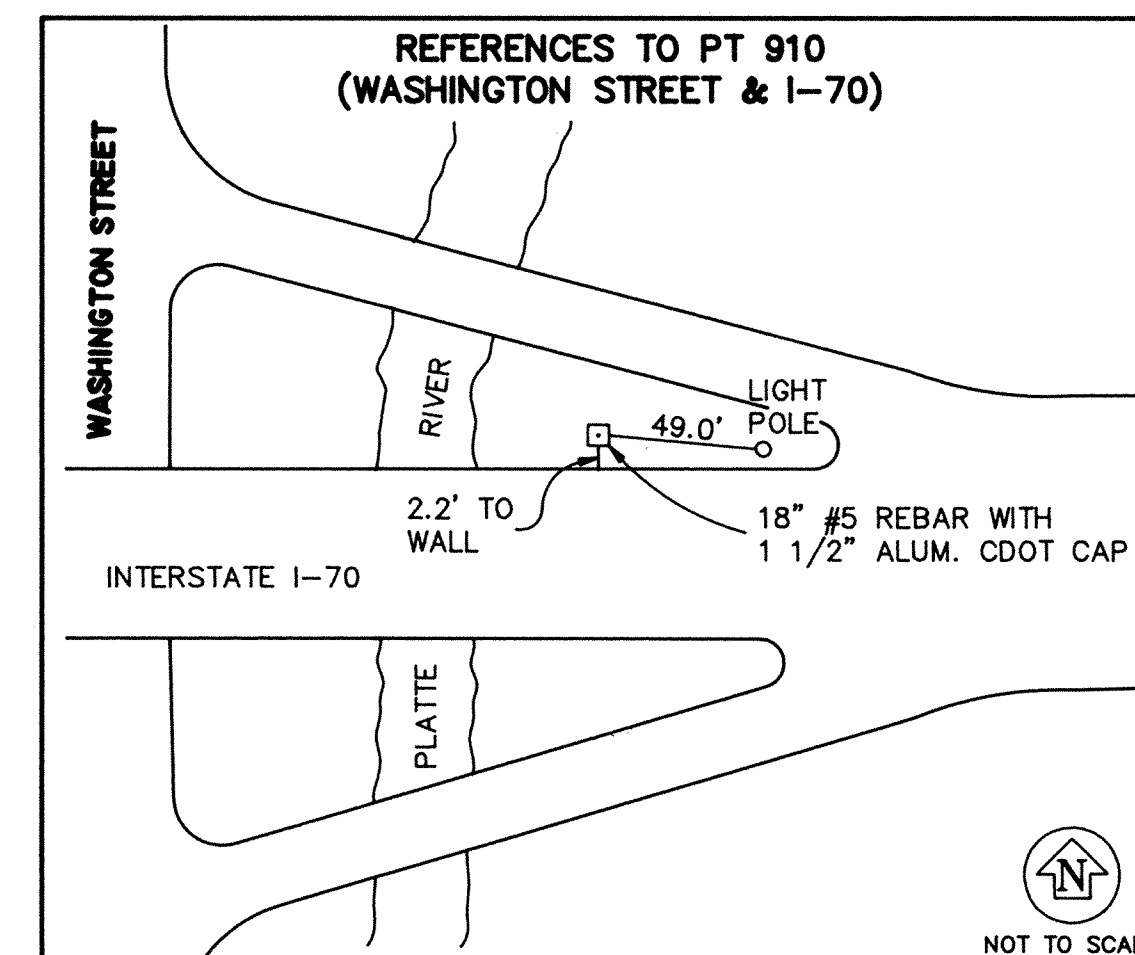
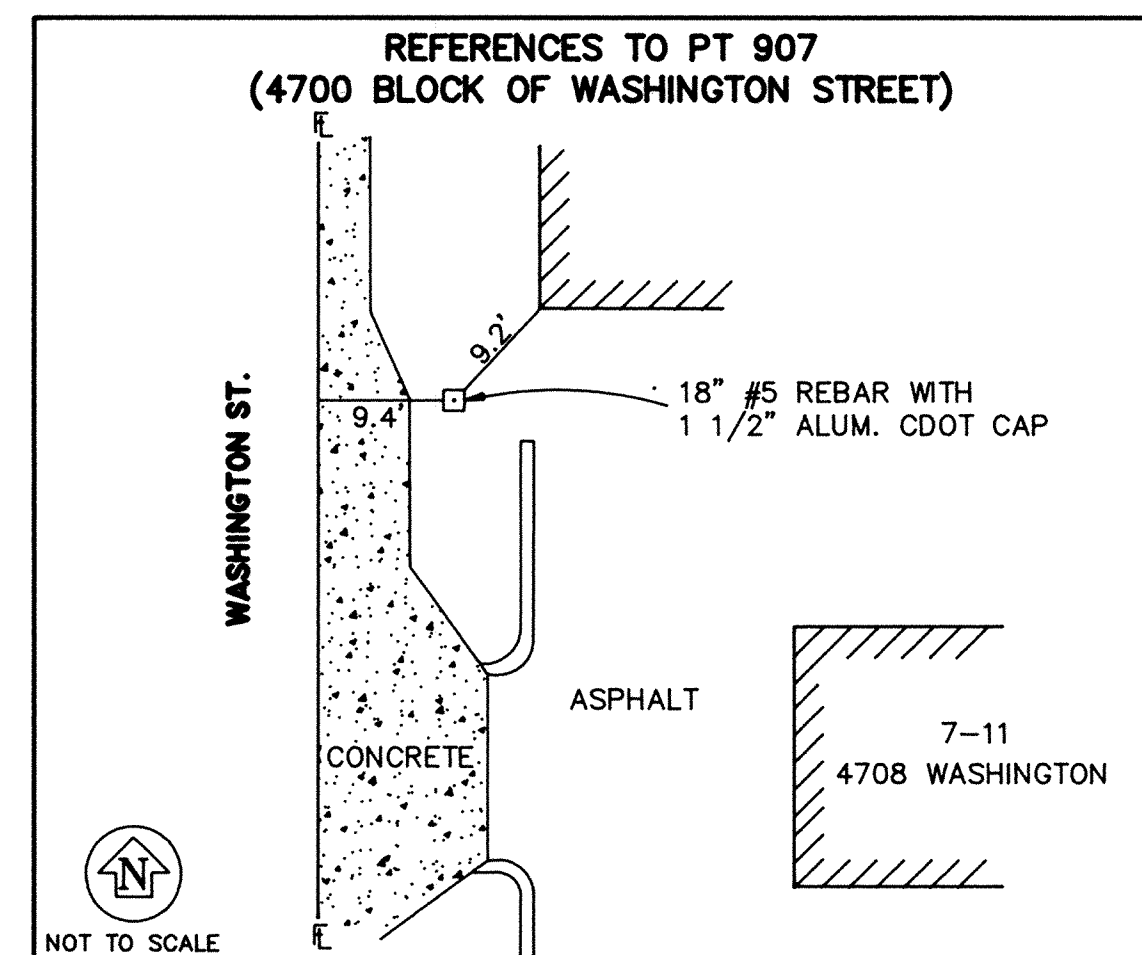
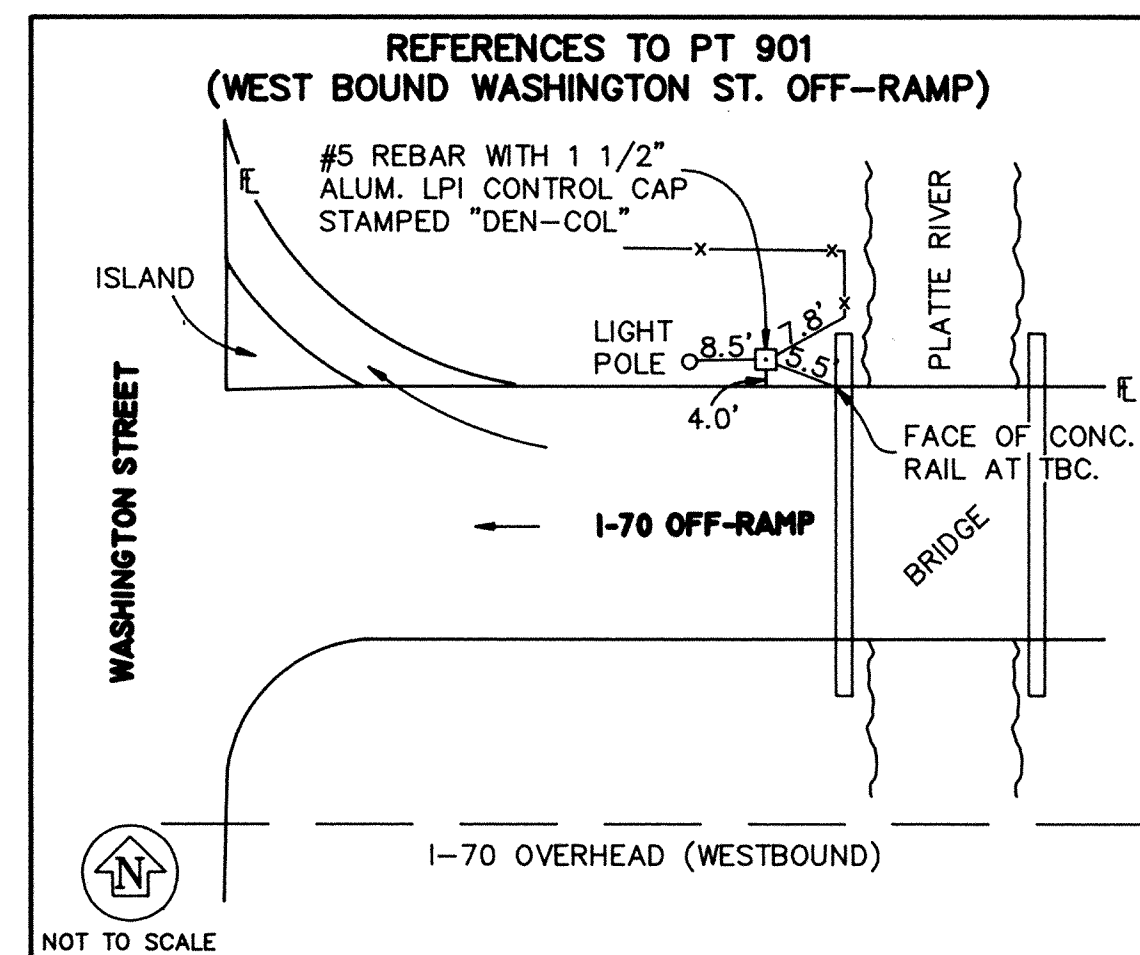


THE LUND PARTNERSHIP, INC.
12285 W. BAYAUD AVE. SUITE 130
LAKEWOOD, COLORADO 80228
303 989-1481
JOB NO. 159.0102 JANUARY 16, 1995

SURVEY CONTROL DIAGRAM

CDOT PROJECT NO. IM-IR(CX) 70-4(145)
INTERSTATE 70 WASHINGTON STREET TO BRIGHTON BOULEVARD
LOCATED IN SECTIONS 15, 22 & 23, TOWNSHIP 3 SOUTH, RANGE 68 WEST,
OF THE 6TH PRINCIPAL MERIDIAN
CITY AND COUNTY OF DENVER

FED. ROAD REGION	DIVISION	PROJ. NO.	SHEET NO.	SHEET TOTALS
VIII	COLO.			
REVISIONS				

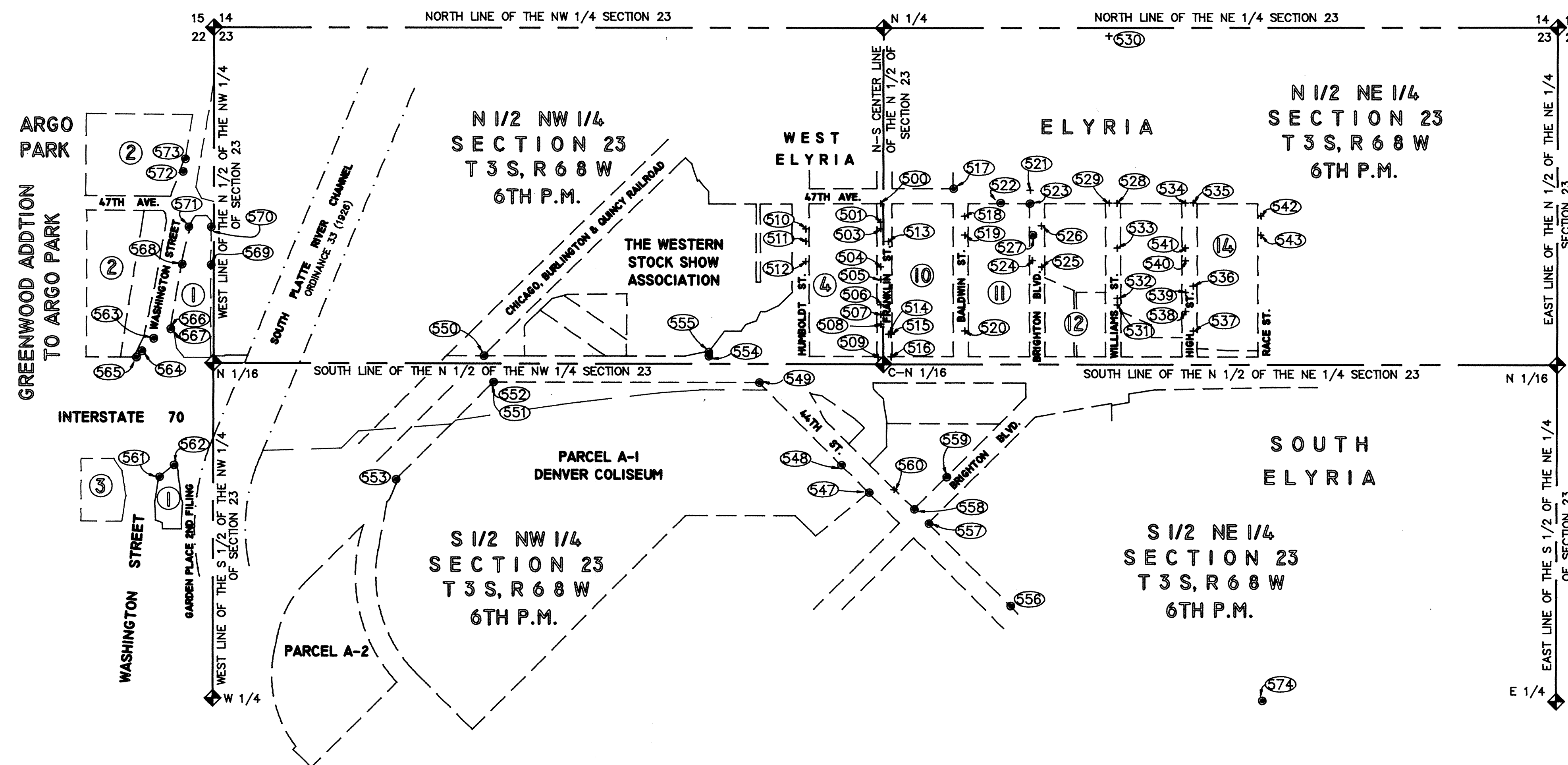


THE LUND PARTNERSHIP, INC.
12285 W. BAYAUD AVE. SUITE 130
LAKEWOOD, COLORADO 80228
303 989-1481
JOB NO. 159.0102 JANUARY 16, 1995

SURVEY CONTROL DIAGRAM

CDOT PROJECT NO. IM-IR(CX) 70-4(145)
INTERSTATE 70 WASHINGTON STREET TO BRIGHTON BOULEVARD
LOCATED IN SECTIONS 15, 22 & 23, TOWNSHIP 3 SOUTH, RANGE 68 WEST,
OF THE 6TH PRINCIPAL MERIDIAN
CITY AND COUNTY OF DENVER

FED. ROAD REGION	DIVISION	PROJ. NO.	SHEET NO.	SHEET TOTALS
VIII	COLO.			
REVISIONS				



LEGEND

- 508 INDICATES POINT NUMBER (SEE SHEET 6 OF 6).
④ INDICATES BLOCK NUMBER
+ INDICATES FOUND CHISELED "+" (SEE TABULATION OF DENVER RANGE LINE & R.O.W. EVIDENCE TABLE ON SHEET 6 OF 6 FOR DESCRIPTION OF FOUND MONUMENTS).
● INDICATES FOUND PROPERTY CORNER (SEE TABULATION OF DENVER RANGE LINE & R.O.W. EVIDENCE TABLE ON SHEET 6 OF 6 FOR DESCRIPTION OF FOUND MONUMENTS).
◆ INDICATES ALIQUOT LAND CORNER (SEE SHEET 1 OF 6 FOR DESCRIPTION OF FOUND MONUMENT).
--- INDICATES SOUTH PLATTE RIVER CHANNEL (ORDINANCE 33 (1926)).
--- INDICATES EASEMENT LINE
--- INDICATES BLOCK LINE AND OR RIGHT-OF-WAY LINE.
--- INDICATES SECTION LINE

SCALE 1" = 300 FEET
300 0 300

NOTES:

- THIS SURVEY DRAWING IS NOT A COMPLETE BOUNDARY SURVEY OF ALL ADJOINING OWNERS AND IS PREPARED FOR THE COLORADO DEPARTMENT OF TRANSPORTATION PURPOSES ONLY.
- RIGHT-OF-WAY LINES, BLOCK LINES, AND PROPERTY LINES ARE SHOWN GRAPHICALLY HEREON AND WERE CALCULATED FOR THE PURPOSE OF SEARCHING FOR RIGHT-OF-WAY EVIDENCE ONLY.
- NO BOUNDARY AND/OR RIGHT-OF-WAY RESOLUTION HAVE BEEN ACCOMPLISHED ON THIS SURVEY CONTROL DIAGRAM. THIS SURVEY IS BEING SUPPLIED TO THE COLORADO DEPARTMENT OF TRANSPORTATION FOR SUCH PURPOSES.
- NO TITLE INSURANCE POLICY OR MEMORANDUM OF OWNERSHIPS WERE SUPPLIED BY THE COLORADO DEPARTMENT OF TRANSPORTATION AT THE TIME OF THIS SURVEY.
- SEARCH COORDINATES WERE CALCULATED IN THE PROCESS OF SEARCHING FOR RIGHT-OF-WAY EVIDENCE. THE FOLLOWING DOCUMENTS WERE REFERRED TO FOR THE CALCULATION PROCESS.
 - RESURVEY PLATS**
 - ARGO PARK AND GREENWOOD ADDITION TO ARGO PARK BOOK 24 PAGE 7
 - GARDEN PLACE, GARDEN PLACE 2ND FILING BOOK 24 PAGE 2
 - ELYRIA AND WEST ELYRIA BOOK 8C PAGES 83-84
 - SOUTH ELYRIA BOOK 6C PAGE 112
 - CCD PLATS**
 - I-70 PLAT BOOK PAGES 10-12
 - 1969 CCD SURVEY OF COLISEUM FIELD BOOK 0117
 - DEPOSITED PLATS**
 - WESTERN STOCK SHOW BOOK 1 PAGE 133
 - LAND SURVEY PLAT BOOK 16 PAGES 55-56
 - ASSESSOR'S MAPS**
 - 2221
 - 2231
 - 2232
 - QUADRANT MAPS**
 - NE 64 NE1/4 S23, T3S, R68W
 - NE 65 NW1/4 S23, T3S, R68W
 - NE 66 NE1/4 S22, T3S, R68W
 - TIE BOOKS**

BOOK 281	PAGES 2-13	(48TH LAFAYETTE TO YORK)
	PAGES 32-43	(47TH LAFAYETTE TO YORK)
		(46TH LAFAYETTE TO YORK)
		(45TH RACE TO YORK)
BOOK 281-I	PAGES 170-179	(YORK TO BRIGHTON)
	PAGES 184-185	(TIES TO COLISEUM PROPERTY)
	PAGES 69-73	(RACE TO YORK)
BOOK 413	PAGES 126-134	(BROADWAY TO WASHINGTON)
	PAGES 151-159	(BROADWAY TO WASHINGTON)
	PAGES 176-185	(BROADWAY TO WASHINGTON)
- THE ABOVE ITEMS A THROUGH Q ARE OFFICIAL RECORDS OF THE CITY AND COUNTY OF DENVER.
- OTHER DOCUMENTS REFERRED TO IN THE PROCESS OF SEARCHING FOR RIGHT-OF-WAY AND PROPERTY EVIDENCE ARE AS FOLLOWS:
 - COLORADO MONUMENTS RECORDS 17L, 21L, 17M, 19M, 21M, 17N, 19N, AND 21N, TOWNSHIP 3 SOUTH, RANGE 68 WEST, 6 PRINCIPAL MERIDIAN.
 - SOUTH PLATTE RIVER ORDINANCE 33 SERIES OF 1926.
 - BOUNDARY SURVEY OF DENVER COLISEUM PROPERTY PREPARED BY MERRICK & ASSOC. IN 1987.
 - COLORADO DEPARTMENT OF TRANSPORTATION RIGHT-OF-WAY PLANS:
 - 170-4(28)286
 - IR 029-2(193) UNIT 3
 - 170-4(14)285
 - RAILROAD MAP D-107 COLORADO AND SOUTHERN/BURLINGTON NORTHERN.
- DENVER TIE BOOK CROSSES AND RIGHT-OF-WAY EVIDENCE SHOWN HEREON WERE LOCATED BY SIDE SHOTS.

THE
LUND PARTNERSHIP, INC.

12285 W. BAYAUD AVE. SUITE 130
LAKEWOOD, COLORADO 80228
303 989-1481
JOB NO. 159.0102 JANUARY 16, 1995

COLORADO DEPARTMENT OF TRANSPORTATION
D.O.H. FORM NO. 126

SURVEY CONTROL DIAGRAM
CDOT PROJECT NO. IM-IR(CX) 70-4(145)
INTERSTATE 70 WASHINGTON STREET TO BRIGHTON BOULEVARD
LOCATED IN SECTIONS 15, 22 & 23, TOWNSHIP 3 SOUTH, RANGE 68 WEST,
OF THE 6TH PRINCIPAL MERIDIAN
CITY AND COUNTY OF DENVER

FED. ROAD REGION	DIVISION	PROJ. NO.	SHEET NO.	SHEET TOTALS
VIII	COLO.			
REVISIONS				

TABULATION OF DENVER RANGE LINE & RIGHT-OF-WAY EVIDENCE (IN FEET)
MODIFIED STATE PLANE COORDINATES

PT NO.	NORTHING	EASTING	DESCRIPTION
500	1710496.940	3150034.380	FOUND CHISELED "+ AT SO. PCR S.W. COR. OF 47TH & FRANKLIN.
501	1710421.910	3150034.580	FOUND CHISELED "+ IN TOP OF CURB NEAR 4695 FRANKLIN.
503	1710396.920	3150034.680	FOUND CHISELED "+ IN TOP OF CURB NEAR 4695 FRANKLIN.
504	1710246.960	3150034.940	FOUND CHISELED "+ IN TOP OF CURB NEAR N.E. COR. OF 4655 FRANKLIN.
505	1710197.000	3150035.060	FOUND CHISELED "+ IN TOP OF CURB NEAR S.E. COR. OF 4655 FRANKLIN.
506	1710096.990	3150035.280	FOUND CHISELED "+ IN TOP OF CURB NEAR N.E. COR. OF 4631 FRANKLIN.
507	1710059.520	3150035.370	FOUND CHISELED "+ IN TOP OF CURB NEAR S.E. COR. OF 4631 FRANKLIN.
508	1710022.030	3150035.410	FOUND CHISELED "+ IN TOP OF CURB NEAR N.E. COR. OF 4619 FRANKLIN.
509	1709894.020	3150024.610	FOUND CHISELED "+ NEAR S.E. COR. BLOCK 4 WEST ELYRIA.
510	1710396.220	3149740.130	FOUND CHISELED "+ IN TOP OF CURB EAST SIDE OF HUMBOLDT.
511	1710346.240	3149740.230	FOUND CHISELED "+ IN TOP OF CURB EAST SIDE OF HUMBOLDT.
512	1710267.090	3149740.390	FOUND CHISELED "+ IN TOP OF CURB EAST SIDE OF HUMBOLDT.
513	1710346.790	3150065.020	FOUND CHISELED "+ IN TOP OF CURB EAST SIDE OF FRANKLIN.
514	1709983.510	3150065.750	FOUND CHISELED "+ IN TOP OF CURB NEAR N.W. COR. OF FIRE STATION.
515	1709983.590	3150075.500	FOUND CHISELED "+ IN SIDEWALK NEAR N.W. COR. OF FIRE STATION.
516	1709895.910	3150075.580	FOUND CHISELED "+ IN TOP OF CURB NEAR S.W. COR. OF FIRE STATION.
517	1710556.590	3150319.450	FOUND NO.4 REBAR IN SIDEWALK NEAR N.W. COR. OF BALDWIN & 47TH.
518	1710447.090	3150364.930	FOUND CHISELED "+ IN TOP OF CURB EAST SIDE OF BALDWIN, WEST OF CINDY LYNN CAFE.
519	1710372.010	3150365.090	FOUND CHISELED "+ IN TOP OF CURB NEAR N.W. COR. OF 4660 BALDWIN.
520	1709996.700	3150365.900	FOUND CHISELED "+ IN TOP OF CURB EAST SIDE OF BALDWIN.
521	1710551.670	3150623.470	FOUND CHISELED "+ IN CONCRETE N.W. COR. OF BRIGHTON BLVD. & 47TH.
522	1710499.900	3150504.550	FOUND LEAD PLUG (WASHER MISSING) NEAR N.W. COR. OF 7-11 PARKING LOT.
523	1710500.190	3150619.590	FOUND 1" BRASS TAG STAMPED "ROBINSON 2132", NEAR N.E. COR. 7-11 PARKING LOT.
524	1710272.500	3150631.750	FOUND CHISELED "+ IN TOP OF CURB NEAR S.E. COR. AUTO TRUCK WAREHOUSE.
525	1710247.510	3150668.210	FOUND CHISELED "+ IN TOP OF CURB NEAR S.W. COR. OF 4656 BRIGHTON BLVD.
526	1710410.140	3150667.790	FOUND CHISELED "+ NEAR N.W. COR. OF CAR WASH.
527	1710372.530	3150631.520	FOUND 1" BRASS TAG IN TOP OF CURB STAMPED "ROBINSON 2132" NEAR S.E. COR. OF 7-11.
528	1710500.950	3150964.970	FOUND CHISELED "+ IN TOP OF CURB AT S.E. COR. OF WILLIAMS & 47TH.
529	1710500.870	3150934.100	FOUND CHISELED "+ IN TOP OF CURB AT S.W. COR. OF WILLIAMS & 47TH.
530	1711157.790	3150932.930	FOUND CHISELED "+ IN TOP OF STEEL GRATE INLET AT S.W. COR. OF WILLIAMS & 48TH.
531	1710098.040	3150965.640	FOUND CHISELED "+ IN TOP OF CURB NEAR S.W. COR. OF 4634 WILLIAMS.
532	1710124.650	3150965.570	FOUND CHISELED "+ IN TOP OF CURB NEAR N.W. COR. OF 4634 WILLIAMS.
533	1710323.270	3150965.200	FOUND CHISELED "+ IN TOP OF CURB NEAR N.W. CORNER OF 4662 WILLIAMS.
534	1710501.470	3151233.970	FOUND CHISELED "+ AT S.W. COR. OF 47TH & HIGH ST.
535	1710501.600	3151264.900	FOUND CHISELED "+ AT S.E. COR. OF 47TH & HIGH ST.
536	1710173.740	3151265.440	FOUND CHISELED "+ NEAR S.W. COR. OF 4644 HIGH ST.
537	1709998.560	3151265.780	FOUND CHISELED "+ IN TOP OF CURB NEAR S.W. COR. OF 4618 HIGH ST.
538	1710073.620	3151235.140	FOUND CHISELED "+ IN TOP OF CURB NEAR N.E. COR. OF 4623 HIGH ST.
539	1710148.710	3151234.950	FOUND CHISELED "+ IN TOP OF CURB NEAR N.E. COR. OF 4635 HIGH ST.
540	1710273.810	3151234.630	FOUND CHISELED "+ IN TOP OF CURB NEAR S.E. COR. OF 4669 HIGH ST.
541	1710323.820	3151234.520	FOUND CHISELED "+ IN TOP OF CURB NEAR N.E. COR. OF 4669 HIGH ST.
542	1710449.640	3151531.190	FOUND CHISELED "+ IN TOP OF CURB NEAR N.E. COR. OF 4665 RACE ST.
543	1710374.600	3151531.330	FOUND CHISELED "+ IN TOP OF CURB NEAR N.E. COR. OF 4669 RACE ST.
547	1709359.870	3149988.590	FOUND NO.4 REBAR & YELLOW CAP STAMPED "DEN CITY ENG 3925" 0.6' DOWN IN RANGE BOX.
548	1709469.270	3149879.640	FOUND ROUND HEAD BOLT IN ASPH. AT 44TH ST. & McFARLAND DR.
549	1709794.350	3149556.050	FOUND NO.4 REBAR & YELLOW CAP STAMPED "DEN CITY ENG 2925" 0.6 DOWN IN RANGE BOX.
550	1709897.470	3148471.400	FOUND YELLOW PLASTIC CAP FLUSH WITH GROUND STAMPED "M. SCHEAR PLS 18475".
551	1709794.400	3148509.960	FOUND RED PLASTIC CAP 0.25' BELOW GROUND STAMPED "MERRICK & CO. PLS 13155".
552	1709794.500	3148513.110	FOUND YELLOW PLASTIC CAP STAMPED "DEN CITY ENG LS 10102" 0.4' BELOW GROUND.
553	1709409.410	3148126.080	FOUND RED PLASTIC CAP 0.3' BELOW GROUND STAMPED "MERRICK & CO. PLS 13155".
554	1709897.370	3149356.820	FOUND 1" YELLOW PLASTIC CAP UNREADABLE.
555	1709913.110	3149356.800	FOUND NO.4 REBAR WITH REMAINS OF YELLOW PLASTIC CAP UNREADABLE.
556	1708913.850	3150545.320	FOUND 1 1/4" YELLOW PLASTIC CAP FLUSH WITH GROUND STAMPED "LS 23515".
557	1709237.480	3150222.080	FOUND 1 1/8" YELLOW CAP UNREADABLE NEAR S.E. COR. OF 44TH ST. & BRIGHTON BLVD.
558	1709293.870	3150165.400	FOUND 1 1/8" YELLOW PLASTIC CAP FLUSH WITH GROUND STAMPED "CR MOORE ASSOC."
559	1709422.520	3150293.360	FOUND 1 1/8" PLASTIC CAP FLUSH W/GROUND STAMPED "CR MOORE & ASSOC. LS 10945".
560	1709371.140	3150087.750	FOUND CHISELED "+ IN WALK BY S.W. FENCE COR. NEAR EAST SIDE OF R.R. TRACKS.
561	1709416.820	3147195.080	FOUND 1" YELLOW PLASTIC CAP 0.2' BELOW GROUND STAMPED "TERRA ENGR. LS 10102".
562	1709464.840	3147252.220	FOUND NO.4 REBAR 0.3' BELOW GROUND.
563	1709962.580	3147171.860	FOUND 1" YELLOW PLASTIC CAP 0.1' BELOW GROUND STAMPED "COWAN ENG 1802".
564	1709914.170	3147125.410	FOUND 1" YELLOW PLASTIC CAP 0.3' BELOW GROUND STAMPED "COWAN ENG 1802".
565	1709889.170	3147104.120	FOUND 1" YELLOW PLASTIC CAP 0.5' ABOVE GROUND STAMPED "COWAN ENG 1802".
566	1709999.610	3147239.440	FOUND 1" RED PLASTIC CAP 0.1' BELOW GROUND STAMPED "WL PROUTY RLS 152".
567	1710000.570	3147239.530	FOUND CHISELED "+ IN SIDEWALK.
568	1710250.010	3147283.090	FOUND 1 1/4" YELLOW PLASTIC CAP 0.1' ABOVE GROUND STAMPED "MERRICK 22100".
569	1710249.870	3147397.510	FOUND 1 1/4" YELLOW PLASTIC CAP FLUSH WITH GROUND STAMPED "MERRICK 22100".
570	1710399.640	3147397.350	FOUND NO.4 REBAR WITH REMAINS OF 1" PLASTIC CAP UNREADABLE.
571	1710399.760	3147309.320	FOUND 1 1/4" YELLOW PLASTIC CAP 0.2' ABOVE GROUND STAMPED "ENGR SRR CO LS 27609".
572	1710620.430	3147286.810	FOUND 1" RED PLASTIC CAP 0.1' BELOW GROUND STAMPED "RLS 22579".
573	1710670.420	3147295.540	FOUND 1" RED PLASTIC CAP 0.1' BELOW GROUND STAMPED "RLS 22579".
574	1708546.593	3151536.277	FOUND 1 1/8" SQUARE ROD 1.8' BELOW PAVEMENT AT 43RD & RACE.

TABULATION OF DENVER RANGE LINE & RIGHT-OF-WAY EVIDENCE (IN METERS)
MODIFIED STATE PLANE COORDINATES

PT NO.	NORTHING	EASTING
500	521360.510	960132.399
501	521337.641	960132.460
503	521330.024	960132.491
504	521284.316	960132.570
505	521269.088	960132.607
506	521238.605	960132.674
507	521227.184	960132.701
508	521215.757	960132.713
509	521176.740	960129.422
510	521329.811	960042.712
511	521314.577	960042.742
512	521290.452	960042.791
513	521314.744	960141.739
514	521204.016	960141.961
515	521204.041	960144.933
516	521177.316	960144.957
517	521378.691	960219.289
518	521345.316	960233.151
519	521322.431	960233.200
520	521208.037	960233.447
521	521377.192	960311.954
522	521361.412	960275.708
523	521361.501	960310.772
524	521292.101	960314.478
525	521284.484	960325.591
526	521334.053	960325.463
527	521322.590	960314.408
528	521361.732	960418.044
529	521361.708	960406.635
530	521561.938	960406.278
531	521238.925	960416.248
532	521247.036	960416.227
533	521307.575	960416.114
534	521361.891	960498.035
535	521361.931	960507.463
536	521261.999	960507.627
537	521208.604	960507.731
538	521231.482	960498.392
539	521254.369	960498.334
540	521292.500	960498.236
541	521307.743	960498.203
542	521346.093	960588.628
543	521323.221	960588.671
547	521013.931	960118.443
548	521047.276	960085.235
549	521146.360	959986.604
550	521177.791	959656.002
551	521146.376	959667.755
552	521146.406	959668.715
553	521029.030	959550.748
554	521177.761	959925.879
555	521182.558	959925.873
556	520877.983	960288.134
557	520976.626	960189.611
558	520993.814	960172.334
559	521033.026	960211.337
560	521017.366	960148.667
561	521031.289	959286.979
562	521045.925	959284.395
563	521197.637	959259.902
564	521182.881	959245.744
565	521175.261	959239.254
566	521208.924	959280.500
567	521209.216	959280.527
568	521285.246	959293.805
569	521285.203	959328.680
570	521330.853	959328.631
571	521330.890	959301.799
572	521398.150	959294.938
573	521413.387	959297.599
574	520776.043	960590.179

THE
LUND PARTNERSHIP, INC.
12265 W. BAYAUD AVE. SUITE 130
LAKEWOOD, COLORADO 80228
303 989-1461
JOB NO. 159.0102 JANUARY 16, 1995