

# COLORADO

## DEPARTMENT OF HIGHWAYS

### PLAN AND PROFILE OF PROPOSED FEDERAL AID PROJECT NO. IN 005-4(4) STATE HIGHWAY NO. 8 (40) ADAMS AND ARAPAHOE COUNTIES

FED. ROAD DIV. NO.	DISTRICT	PROJ. NO.	SHEET NO.
9	COLO.	IN005-4(4)	1

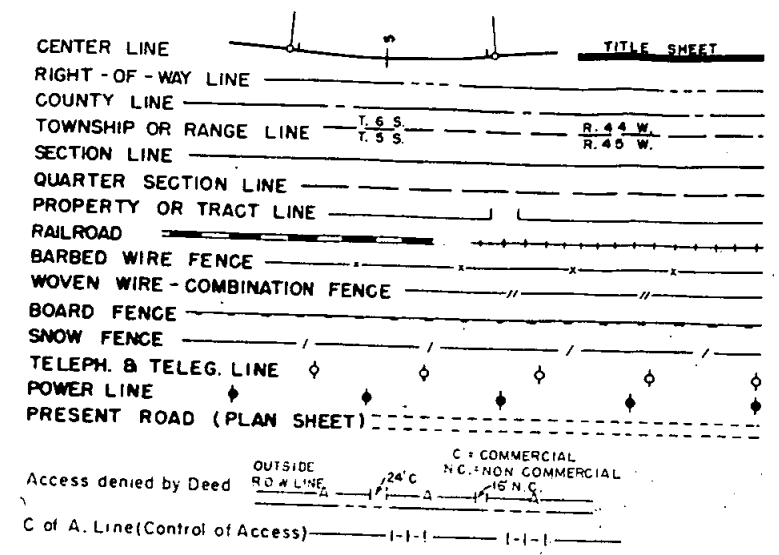
RIGHT OF WAY Rev. 4-19-56 access rights F  
Rev. 11-19-59 Access Note F.C.

#### INDEX OF SHEETS

SHEET NO. 1	TITLE SHEET.
2	TABULATION OF PROPERTIES.
3-11	PLAN AND PROFILE SHEETS SHOWING RIGHT OF WAY.
12-13	OWNERSHIP MAP.

DESCRIPTIONS ON THIS PROJECT CALCULATED  
AND CHECKED BY FIELD FORCES.

#### CONVENTIONAL SIGNS



SCALES OF ORIGINAL TRACINGS  
ON PLAN, 1 IN. = 100 FT.  
ON PROFILE 1 IN. = 100 FT. HORIZONTAL  
1 IN. = 10 FT. VERTICAL  
GRADE LINE ON PROFILE IS SHOWN AS GRADE OF FINISHED ROAD  
GROSS LENGTH OF PROJECT } 23,300 FT =  
NET LENGTH OF PROJECT } 4.413 MI.

#### RIGHT OF WAY

#### TABULATION OF ACCESS RIGHTS

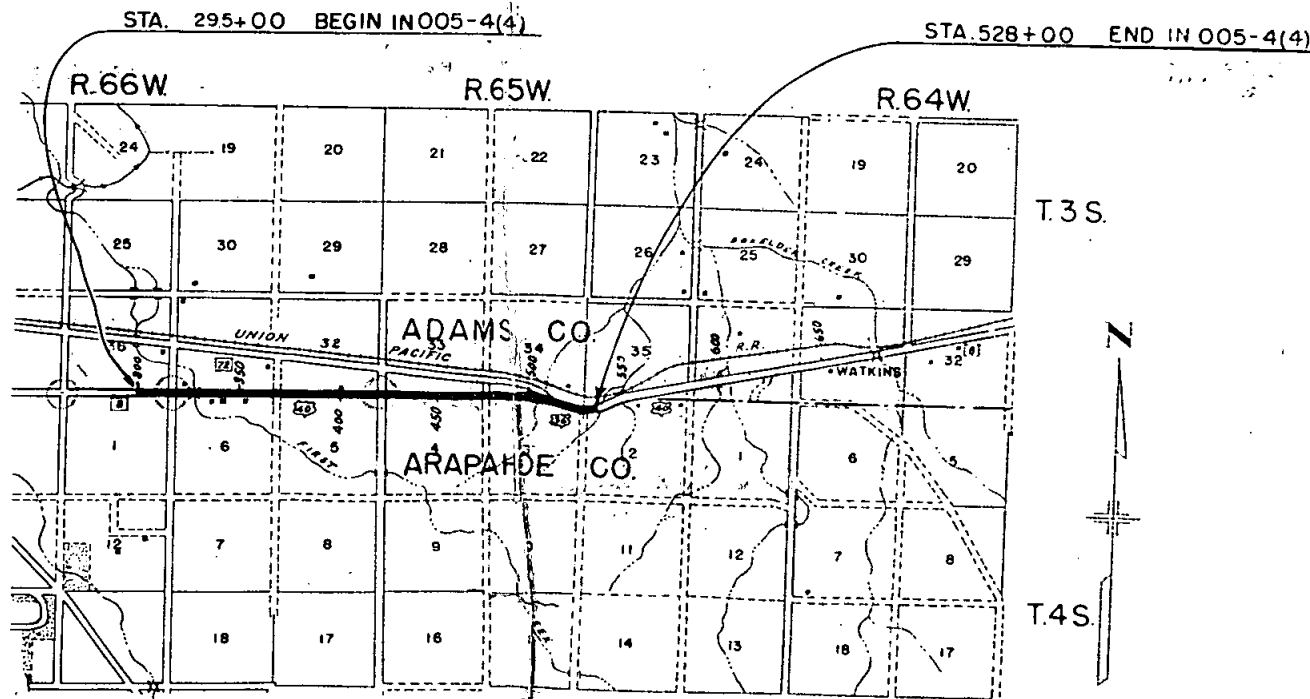
SIDE	FROM	TO
Left or North Side	322 + 25.0	555 + 90.5
Right or South Side	316 + 36.2	349 + 00
	360 + 00	555 + 90.5

#### OPENINGS

STATION	SIDE	WIDTH
322 + 13.0	North (to frontage road)	24'
335 + 16.0	South (right turn only)	24'
347 + 00.0	South ( " " " )	24'
349 + 00.0	South (to frontage road)	24'
358 + 60.0	North (right turn only)	24'
360 + 00.0	South (to frontage road)	24'
369 + 48.0	South (right turn only)	24'
369 + 60.0	North ( " " " )	24'
400 + 60.0	North (to median opening)	24'
408 + 75.0	South (right turn only)	24'
442 + 00.0	South ( " " " )	24'
456 + 00.0	North ( " " " )	24'
461 + 00.0	South ( " " " )	24'
475 + 28.4	South (to median opening)	24'
481 + 00.0	South (right turn only)	24'
493 + 00.0	North ( " " " )	24'
555 + 90.0	South ( " " " )	24'

#### COUNTY ROADS

STATION	SIDE	WIDTH
316 + 36.2	North - South	60'
422 + 39.0	North - South	60'
528 + 54.4	South	60'



R.O.W. TABULATION OF PROPERTIES IN ADAMS & ARAPAHOE COUNTIES S.H.No. 8 PROJ. IN 005-4 (4)

FEDERAL ROAD DIVISION NO.	DISTRICT	PROJ. NO.	SHEET NO.	TOTAL SHEETS
9	COLORADO	IN 005-4(4)	2	

RIGHT OF WAY  
 Rev. 2-1-56 R.E.C.  
 Rev. 2-15-56 R.E.C.  
 Rev. 3-13-56 T.L.K.  
 Rev. 6-26-56 T.L.K.

PARCEL NO.	OWNER	ADDRESS	LOCATION	AREA IN ACRES		REMARKS	NO.
				TOTAL LAND IN TRACT	TO BE ACQUIRED		
ADAMS COUNTY			T.3S., R.65W.				
1 Rev.	Cloude C. Craig	Route 4, Box 139 Aurora, Colo.	S. 1/2 Sec. 31	22.825	16.241		1
2	Henry W. & Quinto L. Grimm	Route 4, Box 144 Aurora, Colo.	S. 1/2 Sec. 32	12.728	9.132		2
3	Henry W. Grimm	Route 4, Box 144 Aurora, Colo.	SE. 1/4, Sec. 32	1.052	0.755		3
4	David C. King	1147 E. Grand Blvd., Corona, Calif.	E. 1/2, Sec. 32	9.381	6.907		4
5	Flader Industries Inc.	3975 York St., Denver, Colo.	W. 1/2, Sec. 33	12.457	9.127		5
6 Rev.	Minta G. Cloud	1193 S. Penna, Denver, Colo.	E. 1/2, Sec. 33	12.112	9.076		Rev. 6
7A	Inez Doyle		S.W. 1/4 Sec. 34	1.788	1.788		7A
7 Rev. 2	Colfax Land Co. % Robert M <sup>c</sup> Dougal	Majestic Bldg., Denver, Colo.	S. 1/2, Sec. 34	4.516	4.516		Rev. 2
7B	" " " "	" " " "	S.W. 1/4 Sec. 34	0.325	0.325		7B
ARAPAHOE COUNTY			T.4S., R.65W.				
8	Owen B. Looney % Marie K. Looney	907 Sharp Bldg., Kansas City, Mo.	W. 1/2, Sec. 6	10.070	6.661		8
9	Homer D. Yates and Della Yates Harris	609 Euclid, Pueblo, Colo.	N.E. 1/4 Sec. 6	1.875	1.113		9
10	Francis J. & Hazel Huber	Route 9, Box 254, Aurora, Colo.	NE. 1/4 Sec. 6	0.943	0.560		10
11	Elder B. Hicks, et al	3900 E. 6th St., Topeka, Kansas	NW 1/4, NE 1/4, Sec. 6	0.553	0.553		11
12	Annie M. & Dee C. Howe	879 Kalamath, Denver, Colo.	E. 1/2, NE. 1/4, Sec. 6	0.937	0.556		12
13	Flader Industries Inc., % Charles E. Friend	709 Mining Exchange Bldg., Denver, Colo.	E. 1/2, NE. 1/4, Sec. 6	2.812	1.669		13
14	Flader Industries Inc., % Charles E. Friend	709 Mining Exchange Bldg., Denver, Colo.	N 1/2 Sec. 5	16.670	10.305		14
15	Charles M. & Minnie M. Bittner	Denver, Colo.	N. 1/2, NW 1/4, Sec. 4	9.435	6.108		15
16 Rev.	John A. & Erma M. Seib	Route 3, Box 5, Aurora, Colo.	NE. 1/4, Sec. 4	10.957	7.871		Rev. 16
17	Henry A. & Florence M. M <sup>c</sup> Cluskey	Watkins, Colo.	N.W. 1/4, Sec. 3	11.684	8.909		17
18	Flader Industries Inc., % Charles E. Friend	709 Mining Exchange Bldg., Denver, Colo.	E. 1/2, Sec. 3	19.876	17.967		18
19 Rev.	Clare J. Schwarzentruher % Charles J. Schwarzentruher	511 Koening, Grand Island, Nebr.	N.W. 1/4 Sec. 2	16.499	10.204		19



S.W. 1/4 SEC. 31  
T. 3 S. R. 65 W.

SE. 1/4 SEC. 31  
T. 3 S. R. 65 W.

Rev. 2-1-56 1 Rev. R.E.C.  
Rev. 4-19-56 R.E.C. Rev. 11-19-59 added access F

FED. ROAD DIV. NO.	DISTRICT	PROJ. NO.	SHEET NO.
9	COLC.	IN005-4(4)	4

1 Claude C. Craig  
Rev. Route 4, Box 139  
Aurora, Colo.

10 Francis J. Huber  
Hazel Huber  
Route 9, Box 254  
Aurora, Colo.

11 Elder B. Hicks, et al  
3900 E. 6th.  
Topeka, Kansas

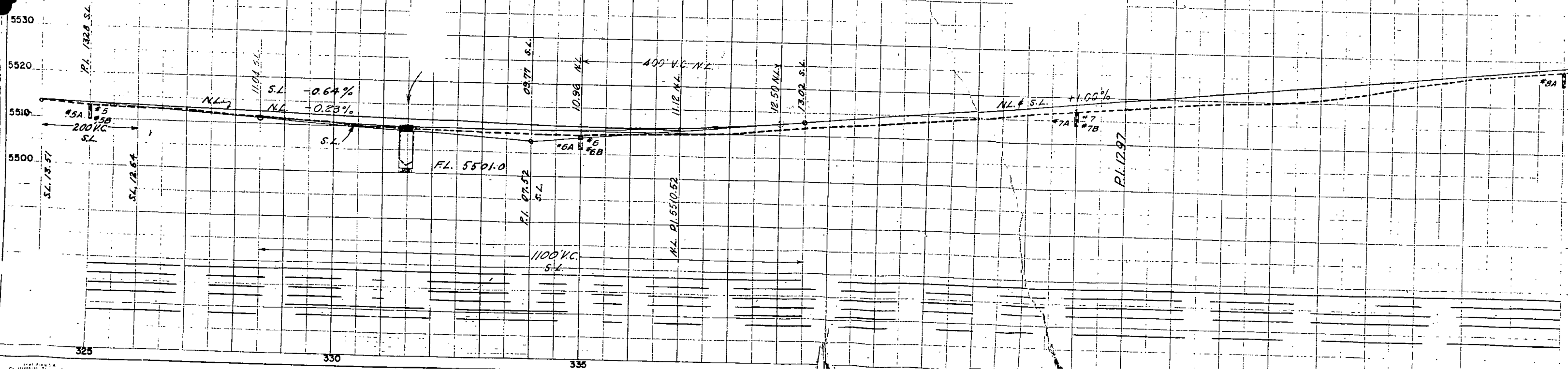
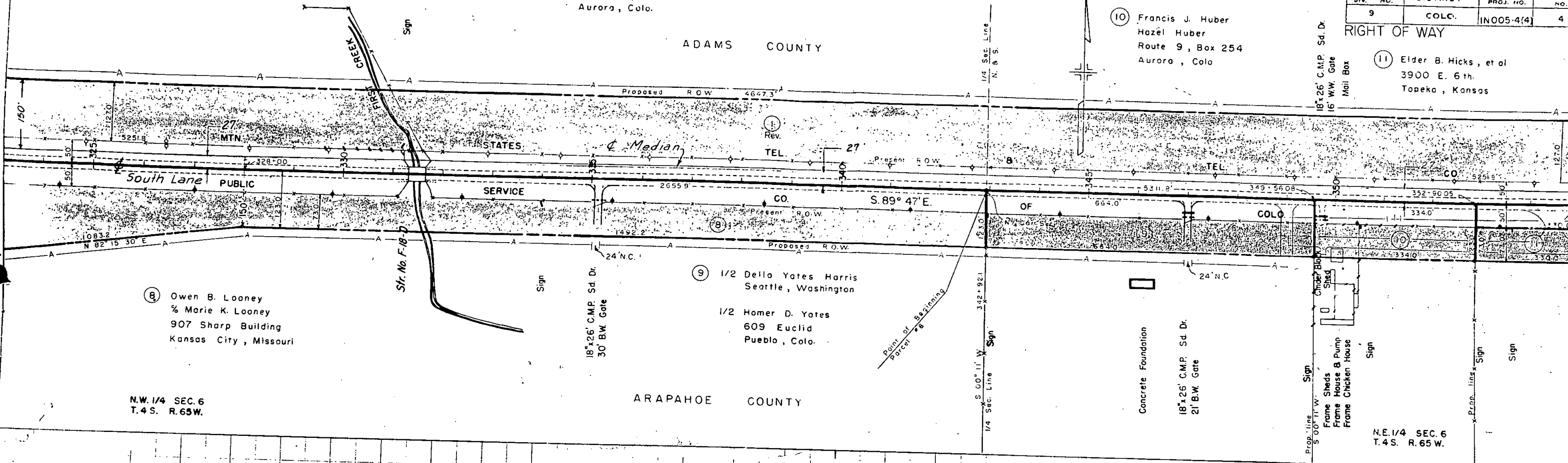
ADAMS COUNTY

ARAPAHOE COUNTY

N.W. 1/4 SEC. 6  
T. 4 S. R. 65 W.

8 Owen B. Looney  
% Marie K. Looney  
907 Sharp Building  
Kansas City, Missouri

9 1/2 Dello Yates Harris  
Seattle, Washington  
1/2 Homer D. Yates  
609 Euclid  
Pueblo, Colo.





S.W. 1/4 SEC. 32  
T.3S. R.65W.

② HENRY W. GRIMM  
QUINTA L. GRIMM  
ROUTE # 4 BOX 144  
AURORA, COLORADO

ADAMS COUNTY

T.3S. R.65W.

FED. ROAD DIV. NO.	DISTRICT	PROJ. NO.	SHEET NO.	TOTAL SHEETS
9	COLO.	IN 005-4(4)	6	

RIGHT OF WAY

④ DAVID C. KING  
1147 GRAND BLVD.  
CORONA, CALIFORNIA

③ HENRY W. GRIMM  
ROUTE # 9 BOX 257  
AURORA, COLORADO

⑭ FLADER INDUSTRIES INC.  
% CHAS. E. FRIEND  
709 MINING EXCHANGE BLDG.  
DENVER, COLORADO

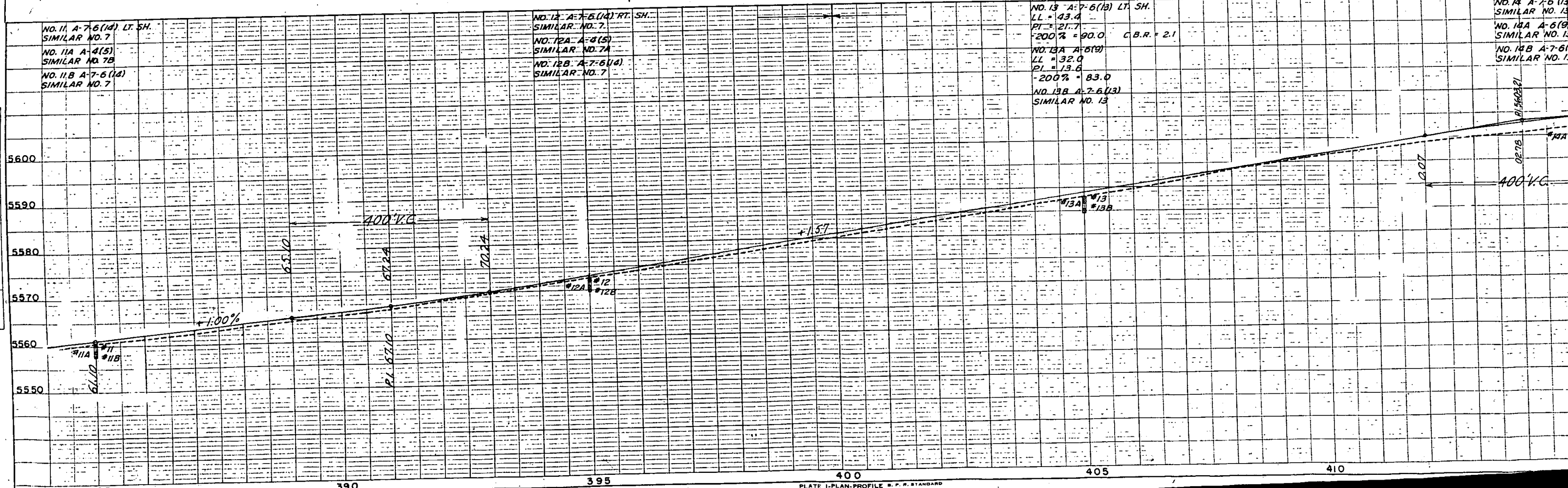
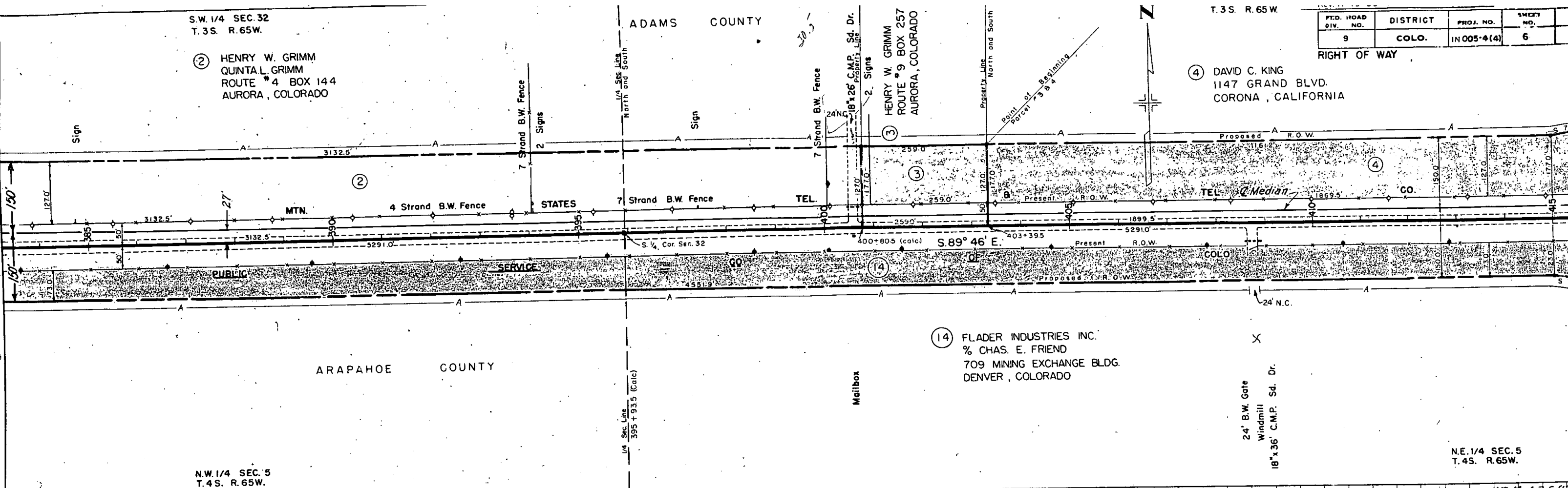
N.W. 1/4 SEC. 5  
T.4S. R.65W.

ARAPAHOE COUNTY

N.E. 1/4 SEC. 5  
T.4S. R.65W.

PLAN SHEET NO. 6  
DATE: 11/1/54  
BY: [Signature]  
CHECKED: [Signature]  
SCALE: AS SHOWN

PROFILE SHEET NO. 7  
DATE: 11/1/54  
BY: [Signature]  
CHECKED: [Signature]  
SCALE: AS SHOWN





SW 1/4 SEC. 33  
T.3S. R.65W.

5 FLADER INDUSTRIES INC.  
3975 YORK ST.  
DENVER, COLORADO

ADAMS

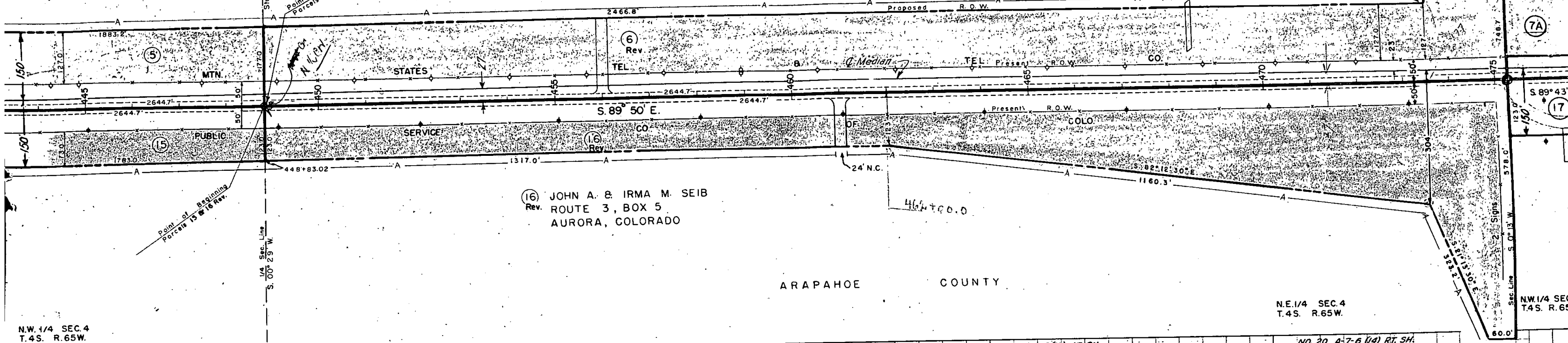
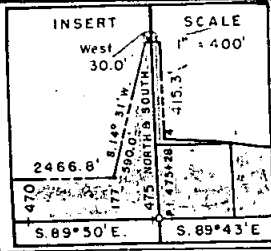
6 MINTA G. CLOUD  
Rev. 1193 S. PENNSYLVANIA ST  
DENVER, COLORADO

COUNTY

Rev. 4-19-56 R.E.C.  
Rev. 11-19-59 Added Access F.C.M.  
Rev. 4-2-56 J.C.  
Rev. 4-6-56 J.C.

FED. ROAD DIV. NO.	DISTRICT	PROJ. NO.	SHEET NO.	TOTAL SHEETS
9	COLO.	IND05-4(A)	8	

RIGHT OF WAY  
S.E. 1/4 SEC. 33  
T.3S. R.65W.  
Rev. 6-26-56 T.L.K.  
(See Sheet No. 9)

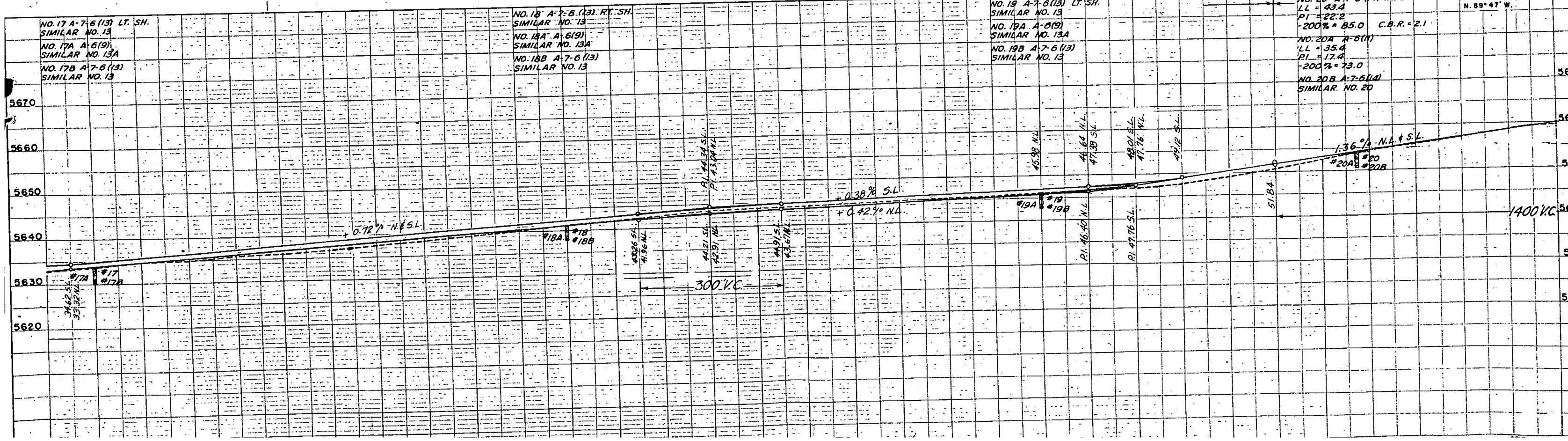


16 JOHN A. & IRMA M. SEIB  
Rev. ROUTE 3, BOX 5  
AURORA, COLORADO

ARAPAHOE COUNTY

N.E. 1/4 SEC. 4  
T.4S. R.65W.

N.W. 1/4 SEC. 4  
T.4S. R.65W.



NO. 17 A-7-6 (13) LT. SH.  
SIMILAR NO. 13  
NO. 17A A-6(9)  
SIMILAR NO. 13A  
NO. 17B A-7-6 (13)  
SIMILAR NO. 13

NO. 18 A-7-6 (13) RT. SH.  
SIMILAR NO. 13  
NO. 18A A-6(9)  
SIMILAR NO. 13A  
NO. 18B A-7-6 (13)  
SIMILAR NO. 13

NO. 19 A-7-6 (13) LT. SH.  
SIMILAR NO. 13  
NO. 19A A-8(9)  
SIMILAR NO. 13A  
NO. 19B A-7-6 (13)  
SIMILAR NO. 13

NO. 20 A-7-6 (14) RT. SH.  
LL = 43.4  
PI = 22.2  
200% = 85.0 C.B.R. = 2.1  
NO. 20A A-8(11)  
LL = 35.4  
PI = 17.4  
200% = 73.0  
NO. 20B A-7-6 (14)  
SIMILAR NO. 20





(Orig. Survey)  
 $\Delta = 28^\circ 50' L$   
 $D = 1^\circ 45'$   
 $R = 3274.3$   
 $T = 841.7$   
 $L = 1647.6$

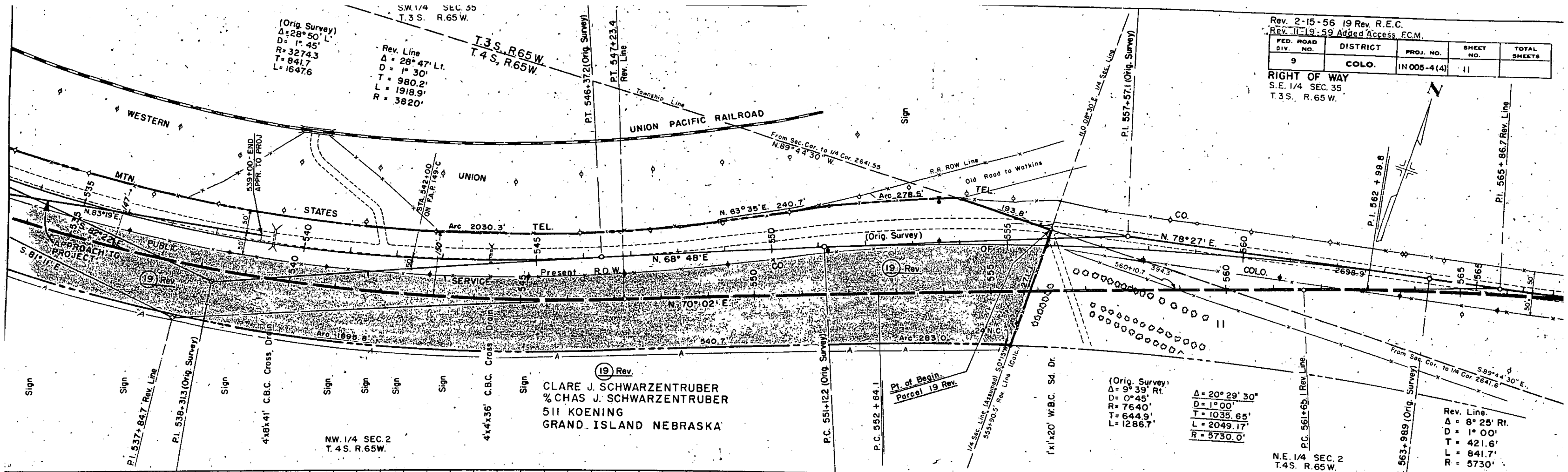
Rev. Line  
 $\Delta = 28^\circ 47' Lt$   
 $D = 1^\circ 30'$   
 $T = 980.2'$   
 $L = 1918.9'$   
 $R = 3820'$

T.3 S. R.65 W.  
 T.4 S. R.65 W.

Rev. 2-15-56 19 Rev. R.E.C.  
 Rev. 11-19-59 Added Access F.C.M.

FED. ROAD DIV. NO.	DISTRICT	PROJ. NO.	SHEET NO.	TOTAL SHEETS
9	COLO.	IN 005-4 (4)	11	

RIGHT OF WAY  
 S.E. 1/4 SEC. 35  
 T.3 S. R. 65 W.

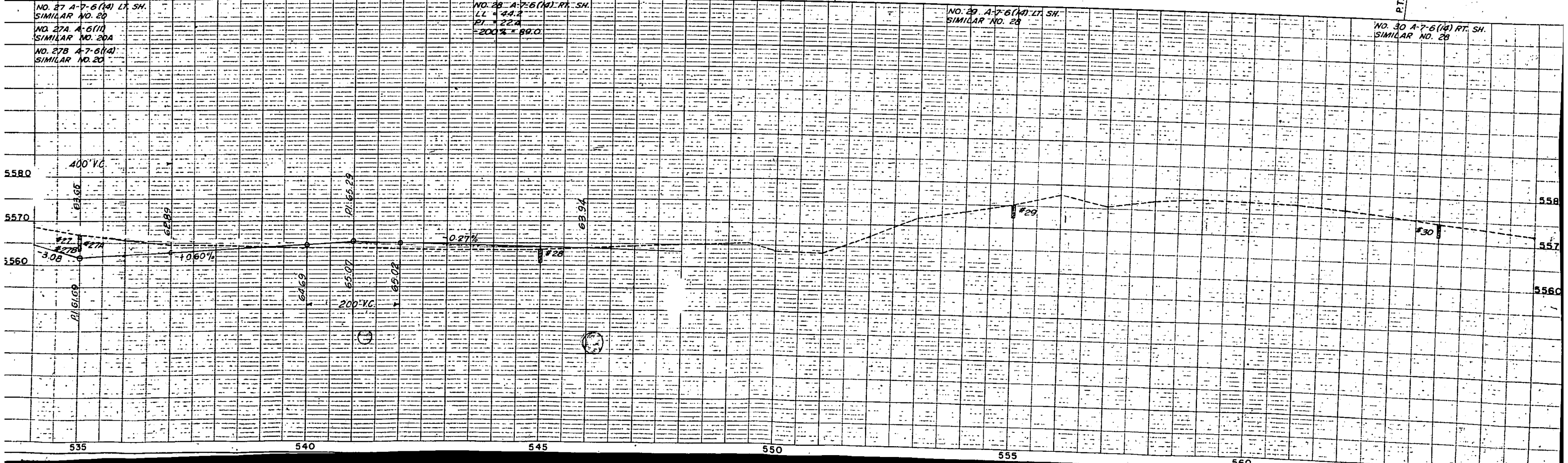


(19) Rev.  
 CLARE J. SCHWARZENRUBER  
 % CHAS J. SCHWARZENRUBER  
 511 KOENIG  
 GRAND ISLAND NEBRASKA

(Orig. Survey)  
 $\Delta = 9^\circ 39' Rt$   
 $D = 0^\circ 45'$   
 $R = 7640'$   
 $T = 644.9'$   
 $L = 1286.7'$

$\Delta = 20^\circ 29' 30''$   
 $D = 1^\circ 00'$   
 $T = 1035.65'$   
 $L = 2049.17'$   
 $R = 5730.0'$

Rev. Line  
 $\Delta = 8^\circ 25' Rt$   
 $D = 1^\circ 00'$   
 $T = 421.6'$   
 $L = 841.7'$   
 $R = 5730.0'$



NO. 27 A-7-6(14) LT. SH.  
 SIMILAR NO. 20

NO. 27A A-6(11)  
 SIMILAR NO. 20A

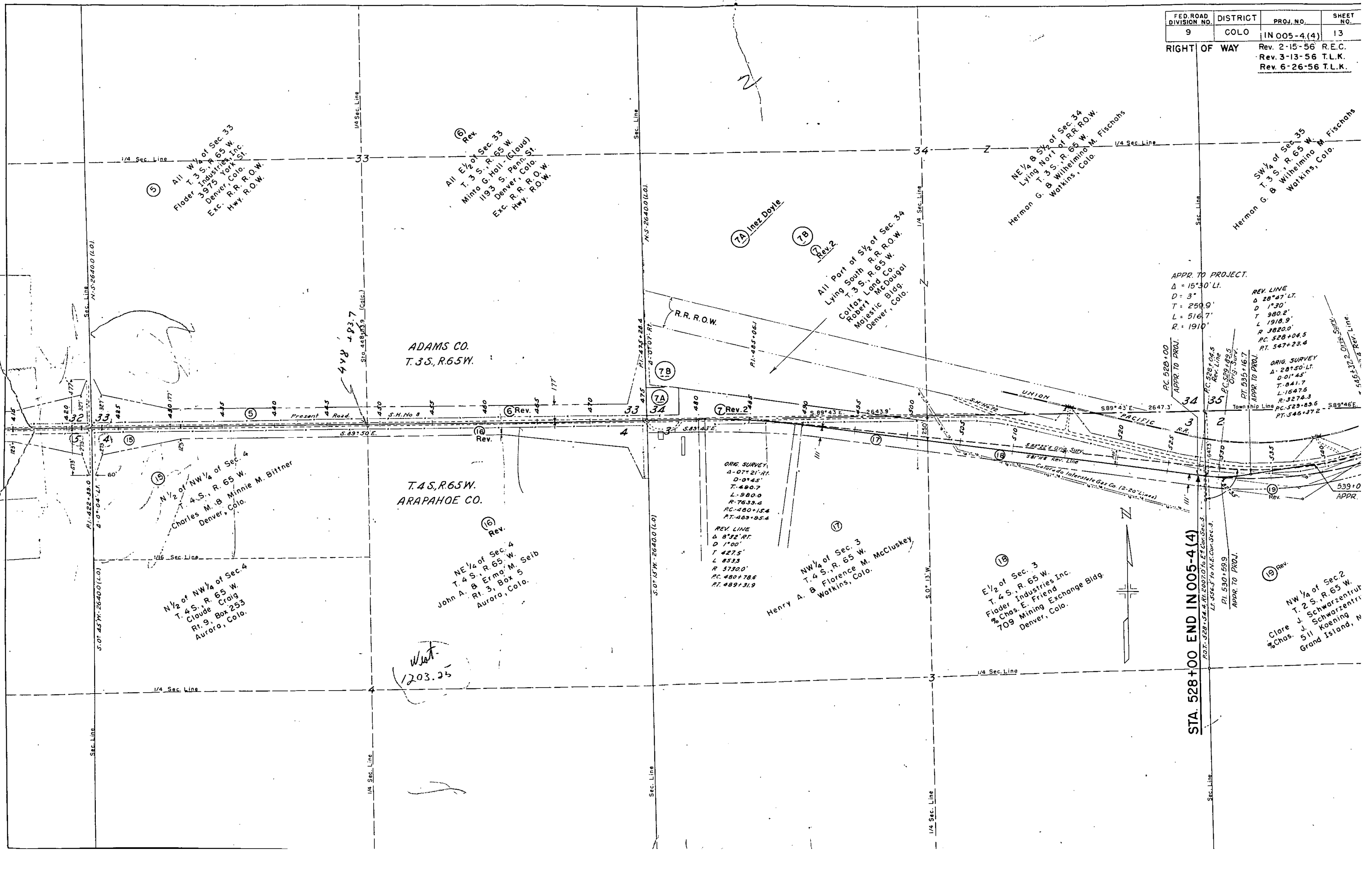
NO. 27B A-7-6(14)  
 SIMILAR NO. 20

NO. 28 A-7-6(14) RT. SH.  
 LL = 44.2  
 PT = 22.4  
 = 200% = 89.0

NO. 29 A-7-6(14) LT. SH.  
 SIMILAR NO. 20

NO. 30 A-7-6(14) RT. SH.  
 SIMILAR NO. 20





⑤ All W 1/2 of Sec. 33  
T. 3 S., R. 65 W.  
Floder Industries, Inc.  
3975 York St.  
Denver, Colo.  
Exc. R.R. R.O.W.  
Hwy. R.O.W.

⑥ Rev.  
All E 1/2 of Sec. 33  
T. 3 S., R. 65 W.  
Minto G. Hoil - (Cloud)  
1193 S. Penn. St.  
Denver, Colo.  
Exc. R.R. R.O.W.  
Hwy. R.O.W.

NE 1/4 & S 1/2 of Sec. 34  
Lying North of RR. R.O.W.  
T. 3 S., R. 65 W.  
Herman G. & Wilhelmina M. Fischons  
Watkins, Colo.

SW 1/4 of Sec. 35  
T. 3 S., R. 65 W.  
Herman G. & Wilhelmina M. Fischons  
Watkins, Colo.

All Part of S 1/2 of Sec. 34  
Lying South R.R. R.O.W.  
T. 3 S., R. 65 W.  
Colfax Land Co.  
Robert McDougall  
Majestic Bldg.  
Denver, Colo.

ADAMS CO.  
T. 3 S., R. 65 W.

T. 4 S., R. 65 W.  
ARAPAHOE CO.

N 1/2 of NW 1/4 of Sec. 4  
T. 4 S., R. 65 W.  
Charles M. & Minnie M. Bittner  
Denver, Colo.

N 1/2 of NW 1/4 of Sec. 4  
T. 4 S., R. 65 W.  
Claude Craig  
Rt. 9, Box 253  
Aurora, Colo.

NE 1/4 of Sec. 4  
T. 4 S., R. 65 W.  
John A. & Erma M. Seib  
Rt. 3, Box 5  
Aurora, Colo.

NW 1/4 of Sec. 3  
T. 4 S., R. 65 W.  
Henry A. & Florence M. McCluskey  
Watkins, Colo.

E 1/2 of Sec. 3  
T. 4 S., R. 65 W.  
Floder Industries Inc.  
% Chas. E. Friend  
Mining Exchange Bldg.  
Denver, Colo.

NW 1/4 of Sec. 2  
T. 2 S., R. 65 W.  
Clare J. Schwarzenfri  
% Chas. 511 Koenig  
Grand Island, N

APPR. TO PROJECT.  
Δ = 15°30' Lt.  
D = 3'  
T = 259.9'  
L = 516.7'  
R = 1910'

REV. LINE  
Δ = 28°47' Lt.  
D = 1'30"  
T = 980.2'  
L = 1918.9'  
R = 3820.0'  
PC. 528+04.5  
PT. 547+23.4

ORIG. SURVEY  
Δ = 28°50' Lt.  
D = 0'45"  
T = 841.7'  
L = 1647.6'  
R = 3274.3'  
PC. 529+83.6  
PT. 546+37.2

ORIG. SURVEY  
Δ = 07°21' Rt.  
D = 0'45"  
T = 490.7'  
L = 980.0'  
R = 7633.4'  
PC. 480+15.4  
PT. 489+95.4

REV. LINE  
Δ = 8°32' Rt.  
D = 1'00"  
T = 427.5'  
L = 853.3'  
R = 5730.0'  
PC. 480+78.6  
PT. 489+31.9

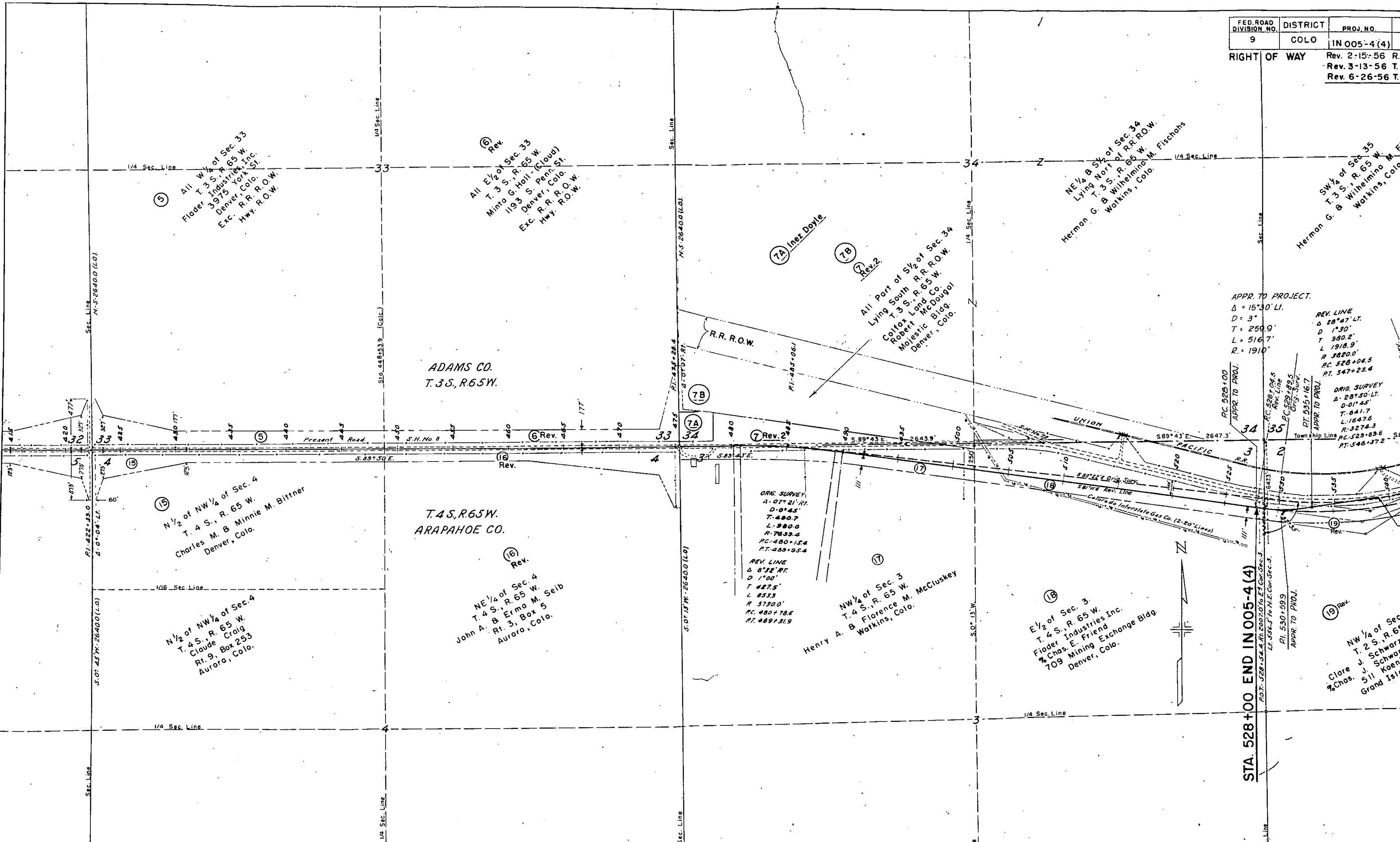
Wat.  
1203.35

STA. 528+00 END IN 005-4(4)



FED. ROAD DIVISION NO.	DISTRICT	PROJ. NO.	SI
9	COLO	IN 005-4(4)	1

RIGHT OF WAY Rev. 2-15-56 R.E.I.  
Rev. 3-13-56 T.L.I.  
Rev. 6-26-56 T.L.I.



⑤ All 1/2 of Sec. 33  
T. 3 S., R. 65 W.  
Floder Industries, Inc.  
3975 York St.  
Denver, Colo.  
Exc. R.R. R.O.W.  
Hwy. R.O.W.

⑥ Rev.  
All 1/2 of Sec. 33  
T. 3 S., R. 65 W.  
Minto G. Hall - (Cloud)  
1193 S. Penn. St.  
Denver, Colo.  
Exc. R.R. R.O.W.  
Hwy. R.O.W.

NE 1/4 of Sec. 34  
Lying North of R.R. R.O.W.  
T. 3 S., R. 65 W.  
Herman G. B. Wilhelmina M. Fischans  
Wilhelmina M. Fischans

SW 1/4 of Sec. 35  
T. 3 S., R. 65 W.  
Herman G. B. Wilhelmina M. Fischans  
Wilhelmina M. Fischans

ADAMS CO.  
T. 3 S., R. 65 W.

⑮ 1/2 of NW 1/4 of Sec. 4  
T. 4 S., R. 65 W.  
Charles M. B. Minnie M. Bittner  
Denver, Colo.

1/2 of NW 1/4 of Sec. 4  
T. 4 S., R. 65 W.  
Claude Craig  
Rt. 9, Box 253  
Aurora, Colo.

T. 4 S., R. 65 W.  
ARAPAHOE CO.

⑯ Rev.  
NE 1/4 of Sec. 4  
T. 4 S., R. 65 W.  
John A. & Erma M. Seib  
Rt. 3, Box 5  
Aurora, Colo.

⑰ NW 1/4 of Sec. 3  
T. 4 S., R. 65 W.  
Henry A. & Florence M. McCluskey  
Florence M. McCluskey

⑱ 1/2 of Sec. 3  
T. 4 S., R. 65 W.  
Floder Industries Inc.  
Chas. E. Friend  
709 Mining Exchange Bldg  
Denver, Colo.

⑲ Rev.  
NW 1/4 of Sec. 2  
T. 2 S., R. 65 W.  
Clare J. Schwarzen  
& Chas. J. Koenig  
Grand Island

APPR. TO PROJECT.  
Δ = 15°30' LT.  
D = 3°  
T = 250.9'  
L = 516.7'  
R = 1910'

REV. LINE  
Δ = 28°47' LT.  
D = 1°30'  
T = 980.2'  
L = 1918.9'  
R = 3820.0'  
PC = 528+04.5  
PT = 547+23.4

ORIG. SURVEY  
Δ = 28°50' LT.  
D = 0°45'  
T = 841.7'  
L = 1547.6'  
R = 3274.3'  
PC = 529+49.6  
PT = 546+37.2

ORIG. SURVEY  
Δ = 0°21' RT.  
D = 0°45'  
T = 480.7'  
L = 980.0'  
R = 7633.4'  
PC = 480+15.4  
PT = 489+95.4

REV. LINE  
Δ = 6°32' RT.  
D = 1°00'  
T = 427.5'  
L = 853.3'  
R = 5730.0'  
PC = 480+78.6  
PT = 489+31.9

STA. 528+00 END IN 005-4(4)