



DEPARTMENT OF TRANSPORTATION - STATE OF COLORADO CONTROL SURVEY DIAGRAM

FEDERAL ROAD DISTRICT NO.	DIVISION	PROJECT NO.	SHEET NUMBER
311C	COLORADO	Project IR(CX) 070-4(143)	3
AIRPARK RD - EAST RIGHT OF WAY			REVISIONS

Project IR(CX) 070-4(143)
 I-70 MP 290.00 to MP 295.00
 Secs. 32, 33, 34, 35, & 36, T. 3 S., R. 65 W., 6th P.M.
 Sec. 31, T. 3 S., R. 64 W., 6th P.M.
 Secs. 1, 2, 3, 4, & 5, T. 4 S., R. 65 W., 6th P.M.
 Sec. 6, T. 4 S., R. 64 W., 6th P.M.
 ARAPAHOE COUNTY, COLORADO

COORDINATE SUMMARY TABLE
 (ADJUSTED FIELD DATA)

POINT NAME	GEODETIC COORDINATES NAD-83(92) (CHARN)		ELEVATION (NAVD '88)m	MAPPING ANGLE	SCALE	NAD 83(92) ZONE 0502		DESCRIPTION
	LATITUDE(N)	LONGITUDE(W)				NORTHING (m)	EASTING (m)	
I-70 CM-MP 290.3	39°44'23.31358"	104°41'44.62463"	1690.467	0°30'26.083"	0.999998000	516745.693	983340.550	CDOT Type 2 Control Monument
I-70 CM-MP 290.5	39°44'23.48150"	104°41'26.61224"	1695.971	0°30'37.443"	0.999998009	516754.681	983769.366	CDOT Type 2 Control Monument
I-70 CM-MP 290.7	39°44'23.46606"	104°41'11.88089"	1700.720	0°30'46.734"	0.999998008	516757.337	984120.113	CDOT Type 2 Control Monument
I-70 CM-MP 290.9	39°44'23.42746"	104°41'01.15136"	1704.683	0°30'53.501"	0.999998006	516758.438	984375.586	CDOT Type 2 Control Monument
I-70 CM-MP 291.1	39°44'23.24088"	104°40'50.04255"	1709.188	0°31'00.507"	0.999997996	516755.065	984640.131	CDOT Type 2 Control Monument
GPS I-70	39°44'23.11675"	104°40'41.50617"	1716.893	0°31'05.891"	0.999997989	516753.073	984843.412	CDOT Monument stamped "GPS 170 AZ Mark SE Corner"
I-70 CM-MP 291.3	39°44'22.86994"	104°40'35.72710"	1711.687	0°31'09.535"	0.999997976	516746.707	984981.075	CDOT Type 2 Control Monument
I-70 CM-MP 291.6	39°44'23.29424"	104°40'20.72311"	1714.784	0°31'18.998"	0.999997999	516763.039	985338.191	CDOT Type 2 Control Monument
I-70 CM-MP 291.8	39°44'23.32622"	104°40'05.53554"	1718.466	0°31'28.577"	0.999998001	516767.328	985698.787	CDOT Type 2 Control Monument
I-70 CM-MP 291.9	39°44'23.50232"	104°39'54.09558"	1720.880	0°31'35.792"	0.999998010	516775.258	985972.113	CDOT Type 2 Control Monument
AIRPARK C.O.A.	39°44'22.97025"	104°39'40.79243"	1728.028	0°31'44.182"	0.999997981	516761.766	986289.003	City of Aurora Range Box @ milepost 292.7, I-70
I-70 CM-MP 292.4	39°44'24.95304"	104°39'19.50624"	1717.244	0°31'57.607"	0.999998089	516827.611	986795.243	CDOT Type 2 Control Monument
N 1/4 SEC. 3 T4S R65W	39°44'23.72810"	104°39'00.27610"	1709.572	0°32'09.735"	0.999998022	516794.104	987253.448	Aurora RP Range Box with 2 1/2" BC set 4" below grade
I-70 CM-MP 293.3	39°44'15.59129"	104°38'24.09856"	1700.532	0°32'32.552"	0.999997993	516551.270	988117.180	CDOT Type 2 Control Monument
I-70 CM-MP 293.5	39°44'18.88273"	104°38'09.36226"	1696.355	0°32'41.846"	0.999997760	516656.108	988467.085	CDOT Type 2 Control Monument
N 1/4 SEC. 2 T4S R65W	39°44'23.44141"	104°37'52.61524"	1700.673	0°32'52.408"	0.999998007	516800.501	988864.480	Bernsten 30" x 2 1/2" alum. pipe w/3 1/4" alum. cap
I-70 CM-MP 293.9	39°44'24.32528"	104°37'43.97879"	1700.340	0°32'57.855"	0.999998055	516829.729	989088.845	CDOT Type 2 Control Monument
I-70 CM-MP 294.2	39°44'27.27773"	104°37'25.98546"	1692.339	0°33'09.204"	0.999998214	516924.902	989497.371	CDOT Type 2 Control Monument
I-70 CM-MP 294.5	39°44'25.98118"	104°37'10.74086"	1684.970	0°33'18.818"	0.999998144	516888.426	989860.714	CDOT Type 2 Control Monument
I-70 CM-MP 294.7	39°44'25.86065"	104°36'55.00801"	1682.957	0°33'28.740"	0.999998138	516888.347	990235.308	CDOT Type 2 Control Monument
I-70 CM-MP 294.9	39°44'25.74287"	104°36'38.15123"	1684.120	0°33'39.372"	0.999998131	516888.628	990636.708	CDOT Type 2 Control Monument
I-70 CM-MP 295.1	39°44'25.70351"	104°36'22.40430"	1685.119	0°33'49.304"	0.999998129	516891.100	991011.637	CDOT Type 2 Control Monument
I-70 CM-MP 295.3	39°44'22.78929"	104°36'10.82816"	1692.738	0°33'56.604"	0.999997972	516803.942	991288.139	CDOT Type 2 Control Monument
I-70 CM-MP 295.5	39°44'22.83764"	104°35'55.77367"	1688.895	0°34'06.099"	0.999997974	516808.980	991646.558	CDOT Type 2 Control Monument
I-70 CM-MP 295.7	39°44'25.11853"	104°35'39.77010"	1690.359	0°34'16.192"	0.999998098	516883.112	992026.888	CDOT Type 2 Control Monument
I-70 CM-MP 295.9	39°44'22.11640"	104°35'29.94599"	1691.340	0°34'22.388"	0.999997935	516792.862	992261.715	CDOT Type 2 Control Monument
I-70 CM-MP 296.1	39°44'23.30814"	104°35'12.21604"	1692.628	0°34'33.571"	0.999998000	516833.847	992683.481	CDOT Type 2 Control Monument
I-70 CM-MP 292.99	39°44'21.59887"	104°38'43.36101"	1704.887	0°32'20.404"	0.999997907	516732.216	987656.800	CDOT Type 2 Control Monument
NE COR SEC 2 T4S R65	39°44'23.30036"	104°37'18.78088"	1687.335	0°33'13.747"	0.999997999	516803.896	989670.089	Bernsten 30" x 2 1/2" alum. pipe w/3 1/4" alum. cap
N 1/4 SEC 1 T4S R65W	39°44'23.12597"	104°36'44.99355"	1681.684	0°33'35.057"	0.999997990	516806.335	990474.588	Bernsten 30" x 2 1/2" alum. pipe w/3 1/4" alum. cap
N 1/4 SEC 6 T4S R64W	39°44'22.42023"	104°35'34.31674"	1690.787	0°34'19.632"	0.999997952	516801.192	992157.558	3 1/4" dia. Alloy cap on 30" x 2 1/2" tube 6" below pavement in RB
WATKINS ASTRO AZ MAR	39°44'43.96121"	104°36'43.45440"	1681.229	0°33'36.027"	0.999999122	517449.254	990504.954	NGS Azimuth Monument "Watkins Astronomic 1912 1983"

PROJECT COORDINATE SUMMARY TABLE
 (ADJUSTED FIELD DATA)

POINT NAME	PROJECT COORDINATES		ELEV(m)	DESCRIPTION
	NORTH (m)	EAST (m)		
I-70 CM-MP 290.3	16884.491	483604.673	1690.467	CDOT Type 2 Control Monument
I-70 CM-MP 290.5	16883.480	484033.605	1695.971	CDOT Type 2 Control Monument
I-70 CM-MP 290.7	16886.137	484384.446	1700.720	CDOT Type 2 Control Monument
I-70 CM-MP 290.9	16887.239	484638.988	1704.683	CDOT Type 2 Control Monument
I-70 CM-MP 291.1	16893.864	484904.604	1709.188	CDOT Type 2 Control Monument
GPS I-70	16891.872	485107.940	1716.893	CDOT Monument stamped "GPS 170 AZ Mark"
I-70 CM-MP 291.3	16885.504	485245.640	1711.687	CDOT Type 2 Control Monument
I-70 CM-MP 291.6	16901.841	485602.651	1714.784	CDOT Type 2 Control Monument
I-70 CM-MP 291.8	16906.131	485964.544	1718.466	CDOT Type 2 Control Monument
I-70 CM-MP 291.9	16914.063	486236.944	1720.880	CDOT Type 2 Control Monument
AIRPARK C.O.A.	16900.588	48553.918	1728.028	City of Aurora Range Box @ milepost 292.7, I-70
I-70 CM-MP 292.4	16966.430	487060.294	1717.244	CDOT Type 2 Control Monument
N 1/4 SEC. 3 T4S R65W	16932.914	487518.622	1709.572	Aurora RP Range Box with 2 1/2" BC set 4" below grade
I-70 CM-MP 293.3	16690.015	488382.587	1700.532	CDOT Type 2 Control Monument
I-70 CM-MP 293.5	16794.881	488732.585	1696.355	CDOT Type 2 Control Monument
N 1/4 SEC. 2 T4S R65W	16939.312	489130.087	1700.673	Bernsten 30" x 2 1/2" alum. pipe w/3 1/4" alum. cap
I-70 CM-MP 293.9	16968.548	489335.507	1700.340	CDOT Type 2 Control Monument
I-70 CM-MP 294.2	17063.747	489763.148	1692.339	CDOT Type 2 Control Monument
I-70 CM-MP 294.5	17027.261	490128.589	1684.970	CDOT Type 2 Control Monument
I-70 CM-MP 294.7	17027.182	490501.283	1682.957	CDOT Type 2 Control Monument
I-70 CM-MP 294.9	17027.463	490902.791	1684.120	CDOT Type 2 Control Monument
I-70 CM-MP 295.1	17029.936	491277.821	1685.119	CDOT Type 2 Control Monument
I-70 CM-MP 295.3	16942.754	491554.397	1692.738	CDOT Type 2 Control Monument
I-70 CM-MP 295.5	16947.794	491912.913	1688.895	CDOT Type 2 Control Monument
I-70 CM-MP 295.7	17021.946	492293.345	1690.359	CDOT Type 2 Control Monument
I-70 CM-MP 295.9	16931.671	492528.235	1691.340	CDOT Type 2 Control Monument
I-70 CM-MP 296.1	16972.668	492950.114	1692.628	CDOT Type 2 Control Monument
I-70 CM-MP 292.99	16871.010	487922.083	1704.887	CDOT Type 2 Control Monument
NE COR SEC 2 T4S R65	16942.709	489935.913	1687.335	Bernsten 30" x 2 1/2" alum. pipe w/3 1/4" alum. cap
N 1/4 SEC 1 T4S R65W	16945.149	490740.628	1681.684	Bernsten 30" x 2 1/2" alum. pipe w/3 1/4" alum. cap
N 1/4 SEC 6 T4S R64W	16940.004	482424.050	1690.787	3 1/4" dia. Alloy cap on 30" x 2 1/2" tube 6" below pavement in RB
WATKINS ASTRO AZ MAR	17588.240	490771.002	1681.229	NGS Azimuth Monument "Watkins Astronomic 1912 1983"



Typical Control Monument Cap

CM-MP - Control Monuments were set by CDOT. They were CDOT Type 2 monuments, a 3 1/4" dia. aluminum control monument cap (as shown) on a 3" x 3/4" dia. finned aluminum security rod on a 3" x 3/4" dia. smooth aluminum rod.

BASIS OF BEARINGS: Bearings used in the calculation of coordinates are based on a grid bearing of N. 89°45'31" E. from the North 1/4 Corner of Section 2 to the Northeast Corner of Section 2, T. 4 S., R.65 W., as obtained from a Global Positioning System (GPS) survey based on the Colorado High Accuracy Reference Network (CHARN).

BASIS OF ELEVATIONS: Project is based on a U.S. Coast and Geodetic Survey (USCGS) benchmark K 259 1938 a 3 inch brass cap set in concrete post with an NAVD '88 elevation of 1695.511m. K 259 1938 is part of Colorado Line 49, a first order second class line leveled in 1938.

COORDINATE DATUM: Project Coordinates are modified Colorado State Plane Central Zone NAD '83 (92) coordinates. State Plane coordinates were modified to a mean project elevation of 1698.999m. The combined elevation/scale correction factor used to modify the state plane to project coordinates was 1.000268599. Project Coordinates were truncated by 500,000m in the Northing and 500,000m in the Easting after conversion of meters to feet. The CHARN is based on the NAD '83 (92) datum.

NOTE: Refer to M-629-1 SURVEY MONUMENTS of the STANDARD PLANS, COLORADO DEPARTMENT OF TRANSPORTATION, M & S STANDARDS NOVEMBER 1992 for survey monument descriptions. Refer to M-100-1 STANDARD SYMBOLS of the STANDARD PLANS, COLORADO DEPARTMENT OF TRANSPORTATION, M & S STANDARDS NOVEMBER 1992 for standard symbol definitions.

NOTE: This control survey is for the use of Colorado Department of Transportation personnel. The survey is not a complete Boundary Survey. Title Policy, Title Commitment, and Title Research were not part of this control survey, therefore, easements, rights, and restrictions of record are not shown. The verification of the physical evidence with relation to easements, rights of way, property boundaries, and restrictions, as described in the instruments of record, were not included in this control survey.

NOTE: According to Colorado law you must commence any legal action based upon any defect in this survey within three years after you first discover such defect. In no event may any action based upon any defect in this survey be commenced more than ten years from the date of the statement shown.

SURVEYORS STATEMENT: I, Joseph P. Conway, a Professional Land Surveyor in the State of Colorado, hereby state that this Control Survey Diagram was prepared under my supervision this _____ day of _____, from a field survey performed under my supervision from January 4, 1990 to October 27, 1995, and checking for and on behalf of the Department of Transportation, State of Colorado, and is not a Land Survey Plot or Right-of-Way Survey Plot and to the best of my knowledge and belief this control survey, as shown, meets the minimum horizontal control tolerances of a Type B Survey and this topographic survey, as shown, meets the minimum horizontal control tolerances of a Type D Survey as listed in the Colorado Department of Transportation Survey Manual Chapter Three (Revised 4/29/82).

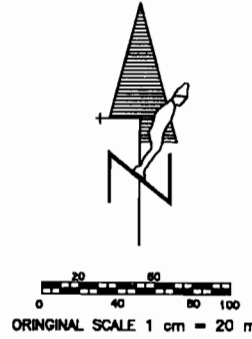
Joseph P. Conway L.S. 25618



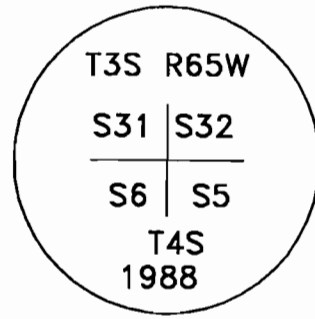
DEPARTMENT OF TRANSPORTATION - STATE OF COLORADO CONTROL SURVEY DIAGRAM

FEDERAL ROAD REGION NO.	DIVISION	PROJECT NO.	SHEET NUMBER
VIII	COLORADO	Project IR(CX) 070-4(143)	3A
AIRPARK RD - EAST		RIGHT OF WAY	
REVISIONS			

Project IR(CX) 070-4(143)
 I-70 MP 290.00 to MP 295.00
 Secs. 32, 33, 34, 35, & 36, T. 3 S., R. 65 W., 6th P.M.
 Sec. 31, T. 3 S., R. 64 W., 6th P.M.
 Secs. 1, 2, 3, 4, & 5, T. 4 S., R. 65 W., 6th P.M.
 Sec. 6, T. 4 S., R. 64 W., 6th P.M.
 ARAPAHOE COUNTY, COLORADO



FOUND:
 A 1" Iron Pin
 NW COR SEC 5
 T. 4 S., R. 65 W., 6th P.M.
 N 16913.415
 E 483488.141
 EL 1715.70

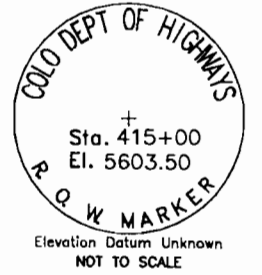


NOT TO SCALE
 SET:
 A 3 1/4" Aluminum cap on a
 30" x 2 1/2" tube set 6" below
 concrete pavement in Range Box

FOUND:
 1 1/2" Dia. Brass Cap, unmarked
 N 1/4 SEC 5
 T. 4 S., R. 65 W., 6TH P.M.
 N 16917.087
 E 484294.081
 SET:
 4 - 3 1/4"
 Aluminum Reference caps.

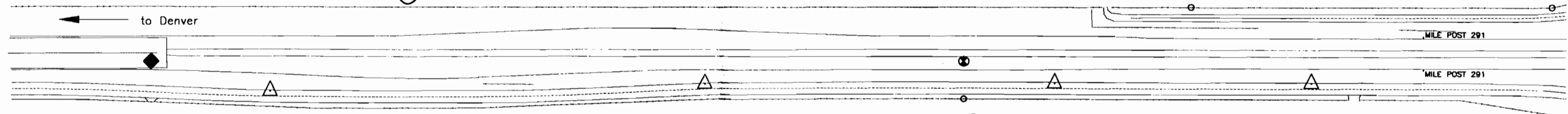
FOUND:
 MERRICK CAP LS # 13155

FOUND:
 BURDICK CAP PE PLS #9010



ROW MARKER - CDOH Brass cap, set in concrete, stamped as shown

FOUND:
 ROW MARKER STA. 415+00
 N 16873.582
 E 484875.031
 EL 1708.62



SET:
 I-70 CM-MP 290.3
 N 16884.491
 E 483604.673
 EL 1690.47

SET:
 I-70 CM-MP 290.5
 N 16893.480
 E 484033.605
 EL 1695.97

FOUND:
 PLASTIC CAP ON #4 REBAR, LS #3975

SET:
 I-70 CM-MP 290.7
 N 16896.137
 E 484384.446
 EL 1700.72



Typical Control Monument Cap NOT TO SCALE

SET:
 I-70 CM-MP 290.9
 N 16897.239
 E 484639.988
 EL 1704.68

CM-MP - Control Monuments were set by CDOT. They were GPOT Type 2 monuments, a 3-1/4" dia. aluminum control monument cap (as shown) on a 3" x 3/4" dia. fitted aluminum security rod on a 3" x 3/4" dia. smooth aluminum rod.

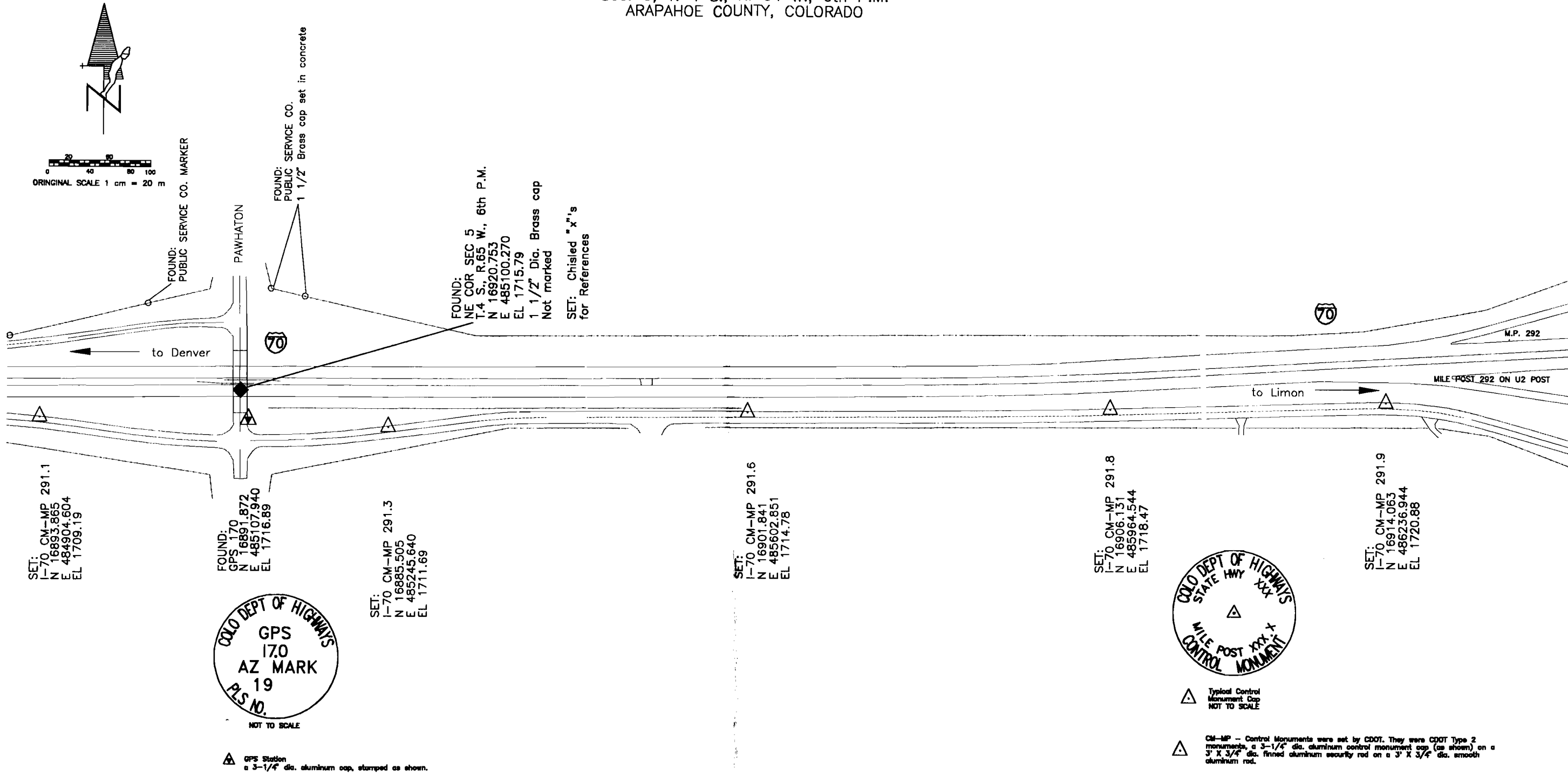


ORIGINAL SCALE 1 cm = 20 m

DEPARTMENT OF TRANSPORTATION - STATE OF COLORADO CONTROL SURVEY DIAGRAM

Project IR(CX) 070-4(143)
 I-70 MP 290.00 to MP 295.00
 Secs. 32, 33, 34, 35, & 36, T. 3 S., R. 65 W., 6th P.M.
 Sec. 31, T. 3 S., R. 64 W., 6th P.M.
 Secs. 1, 2, 3, 4, & 5, T. 4 S., R. 65 W., 6th P.M.
 Sec. 6, T. 4 S., R. 64 W., 6th P.M.
 ARAPAHOE COUNTY, COLORADO

FEDERAL ROAD REGION NO.	DIVISION	PROJECT NO.	SHEET NUMBER
VIII	COLORADO	Project IR(CX) 070-4(143)	38
AIRPARK RD - EAST		RIGHT OF WAY	
REVISIONS			





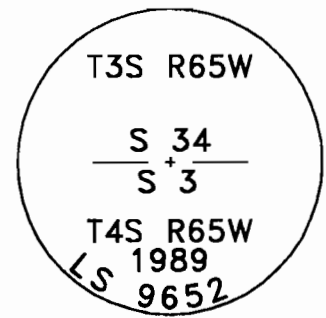
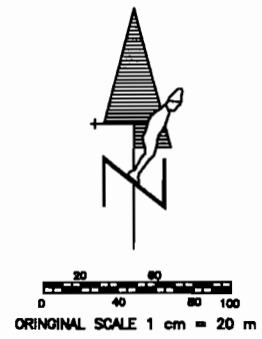
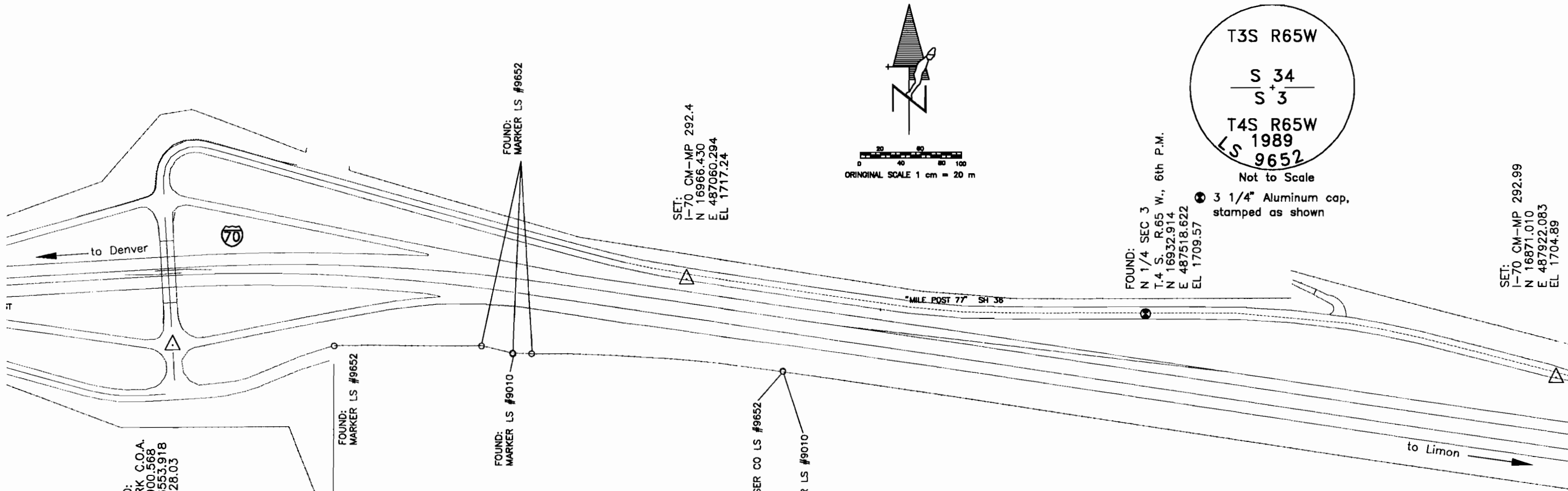
DEPARTMENT OF TRANSPORTATION - STATE OF COLORADO CONTROL SURVEY DIAGRAM

Project IR(CX) 070-4(143)
 I-70 MP 290.00 to MP 295.00
 Secs. 32, 33, 34, 35, & 36, T. 3 S., R. 65 W., 6th P.M.
 Sec. 31, T. 3 S., R. 64 W., 6th P.M.
 Secs. 1, 2, 3, 4, & 5, T. 4 S., R. 65 W., 6th P.M.
 Sec. 6, T. 4 S., R. 64 W., 6th P.M.
 ARAPAHOE COUNTY, COLORADO

FEDERAL ROAD REGION NO.	DIVISION	PROJECT NO.	SHEET NUMBER
32	COLORADO	Project IR(CX) 070-4(143)	3C

REVISIONS	

AIRPARK RD - EAST
 RIGHT OF WAY



FOUND:
 AIRPARK C.O.A.
 N 16900.568
 E 486553.918
 EL 1728.03



Not to Scale
 △ 3" Brass cap in City of Aurora Range Box, flush with asphalt

SET:
 I-70 CM-MP 292.4
 N 16966.430
 E 487060.284
 EL 1717.24

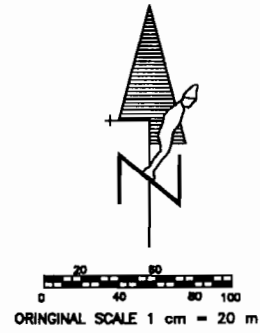
FOUND:
 N 1/4 SEC 3
 T.4 S. R.65 W., 6th P.M.
 N 16932.914
 E 487518.622
 EL 1709.57

● 3 1/4" Aluminum cap, stamped as shown

SET:
 I-70 CM-MP 292.99
 N 16871.010
 E 487922.083
 EL 1704.89



△ Typical Control Monument Cap NOT TO SCALE
 △ CM-MP - Control Monuments were set by CDOT. They were CDOT Type 2 monuments, a 3-1/4" dia. aluminum control monument cap (as shown) on a 3" X 3/4" dia. fitted aluminum security rod on a 3" X 3/4" dia. smooth aluminum rod.

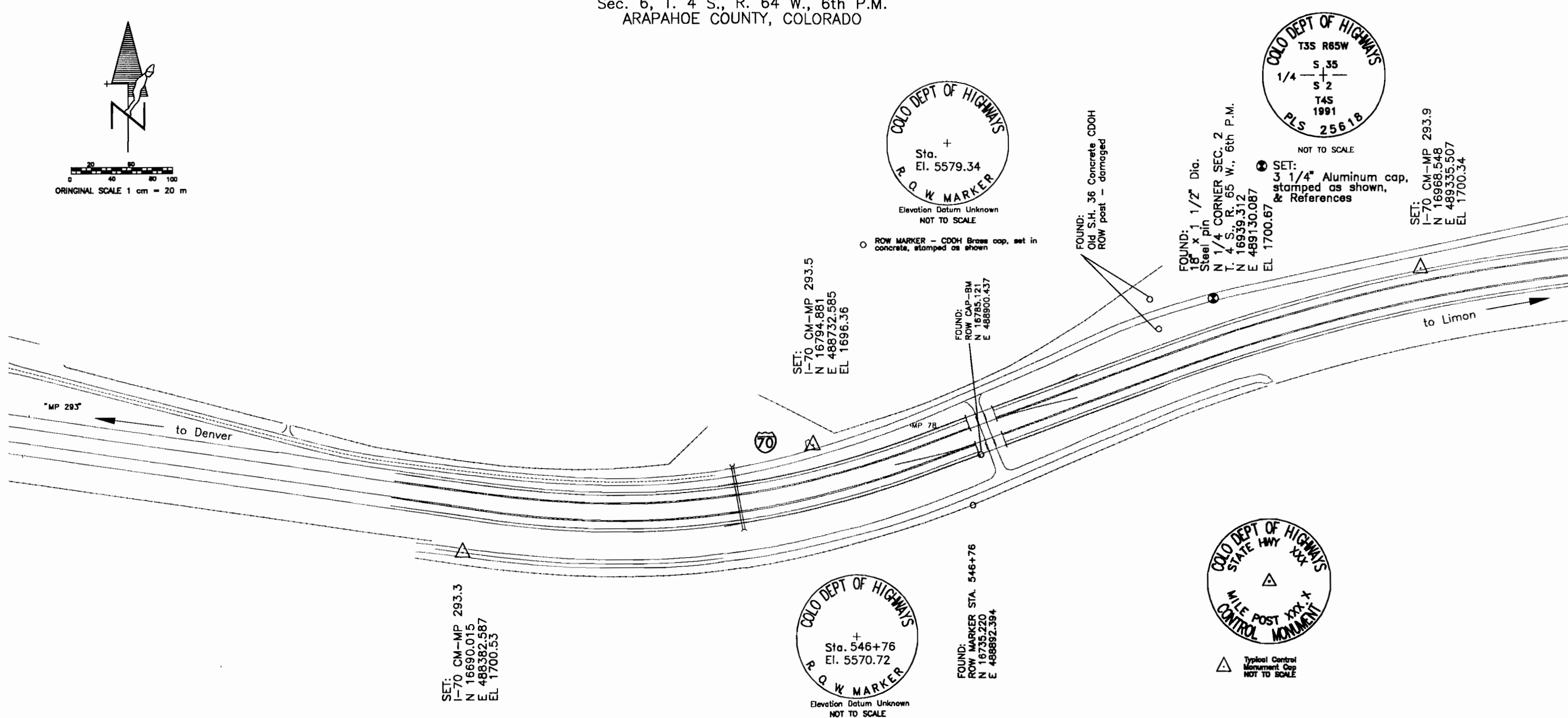


DEPARTMENT OF TRANSPORTATION - STATE OF COLORADO CONTROL SURVEY DIAGRAM

Project IR(CX) 070-4(143)
 I-70 MP 290.00 to MP 295.00
 Secs. 32, 33, 34, 35, & 36, T. 3 S., R. 65 W., 6th P.M.
 Sec. 31, T. 3 S., R. 64 W., 6th P.M.
 Secs. 1, 2, 3, 4, & 5, T. 4 S., R. 65 W., 6th P.M.
 Sec. 6, T. 4 S., R. 64 W., 6th P.M.
 ARAPAHOE COUNTY, COLORADO

FEDERAL ROAD REGION NO.	DIVISION	PROJECT NO.	SHEET NUMBER
XIII	COLORADO	Project IR(CX) 070-4(143)	30

AIRPARK RD - EAST		RIGHT OF WAY	
REVISIONS			





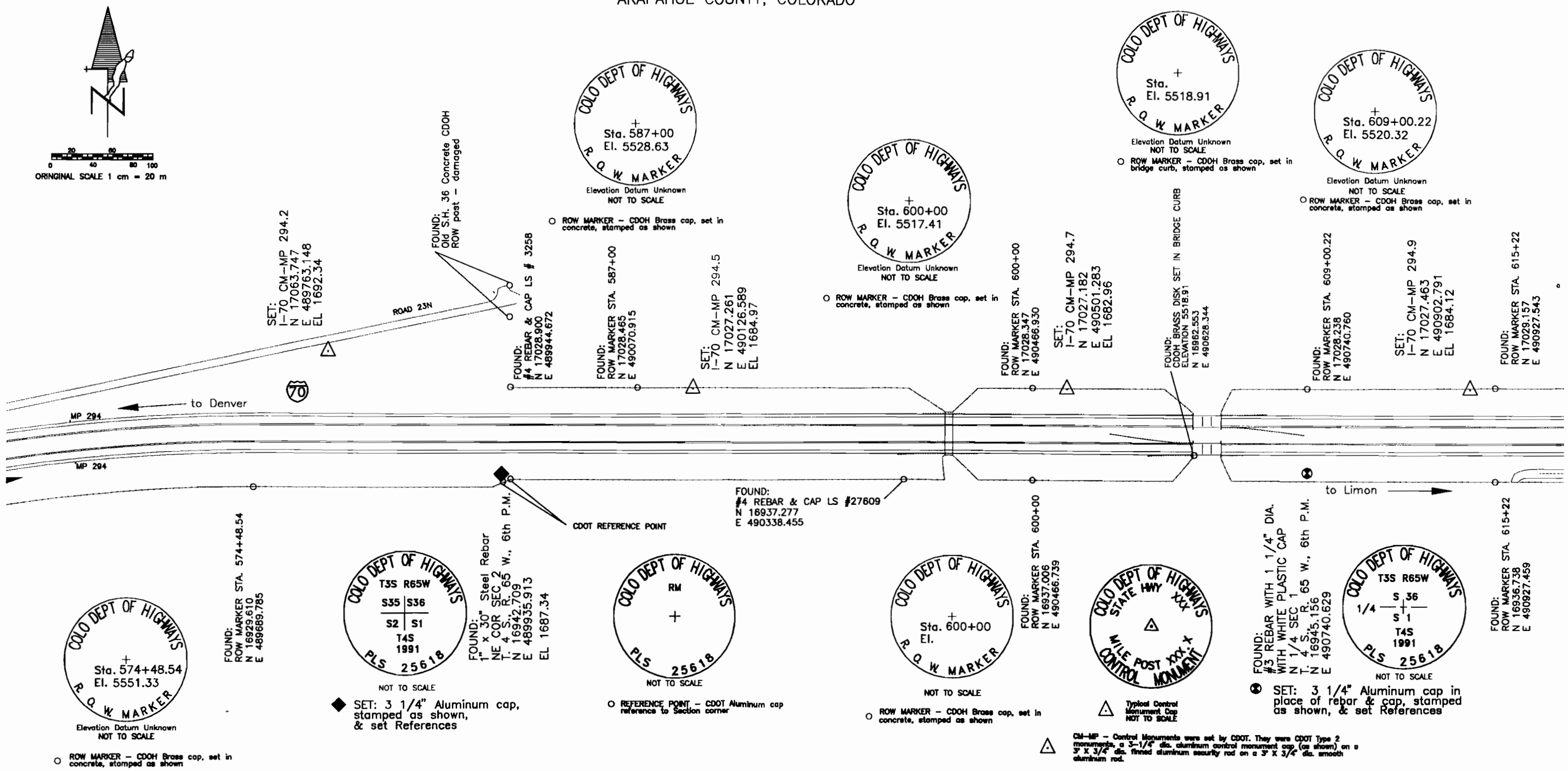
ORIGINAL SCALE 1 cm = 20 m

DEPARTMENT OF TRANSPORTATION - STATE OF COLORADO CONTROL SURVEY DIAGRAM

Project IR(CX) 070-4(143)
 I-70 MP 290.00 to MP 295.00
 Secs. 32, 33, 34, 35, & 36, T. 3 S., R. 65 W., 6th P.M.
 Sec. 31, T. 3 S., R. 64 W., 6th P.M.
 Secs. 1, 2, 3, 4, & 5, T. 4 S., R. 65 W., 6th P.M.
 Sec. 6, T. 4 S., R. 64 W., 6th P.M.
 ARAPAHOE COUNTY, COLORADO

FEDERAL ROAD REGION NO.	DIVISION	PROJECT NO.	SHEET NUMBER
VIII	COLORADO	Project IR(CX) 070-4(143)	3E

REVISIONS	

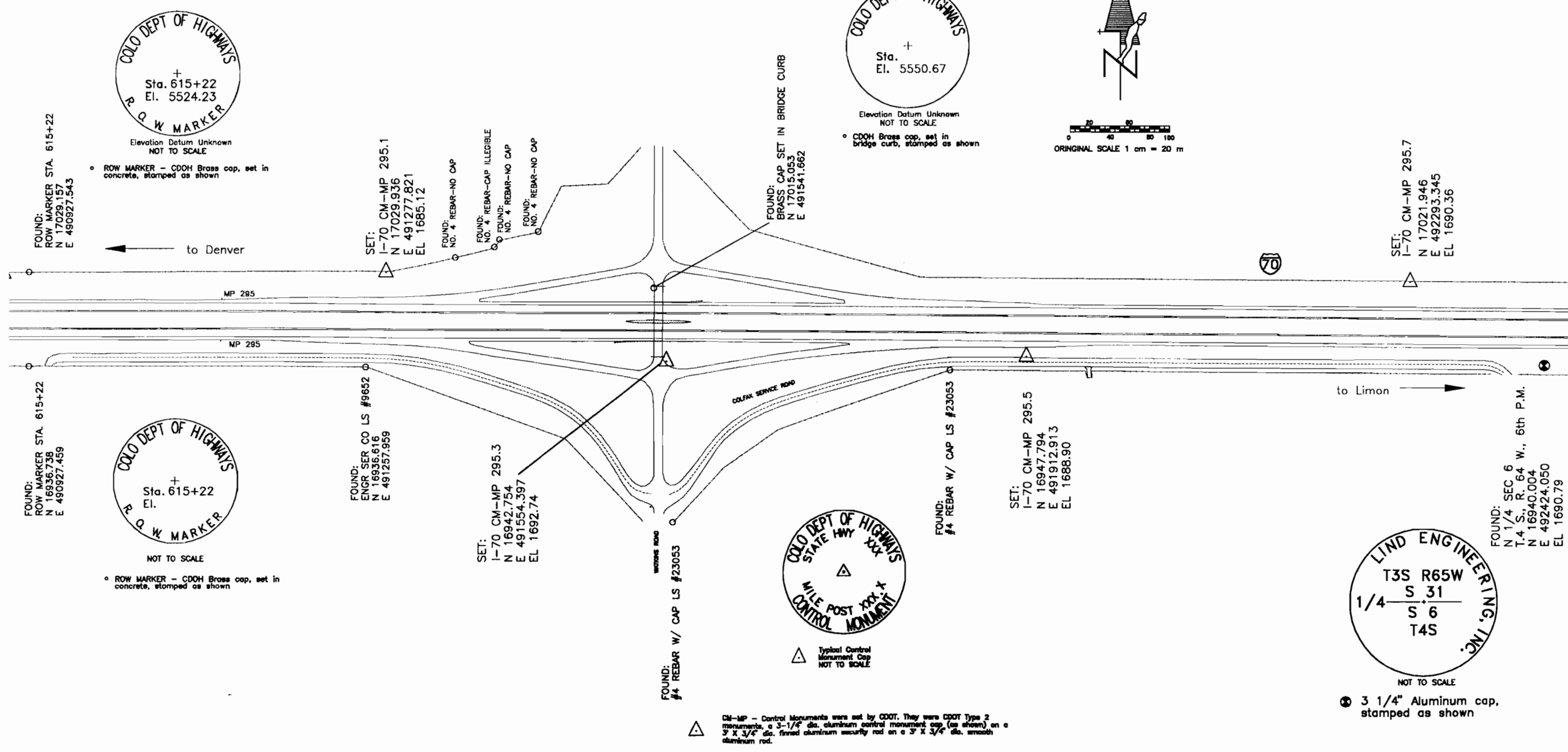




DEPARTMENT OF TRANSPORTATION - STATE OF COLORADO CONTROL SURVEY DIAGRAM

Project IR(CX) 070-4(143)
 I-70 MP 290.00 to MP 295.00
 Secs. 32, 33, 34, 35, & 36, T. 3 S., R. 65 W., 6th P.M.
 Sec. 31, T. 3 S., R. 64 W., 6th P.M.
 Secs. 1, 2, 3, 4, & 5, T. 4 S., R. 65 W., 6th P.M.
 Sec. 6, T. 4 S., R. 64 W., 6th P.M.
 ARAPAHOE COUNTY, COLORADO

FEDERAL ROAD REGION NO.	DIVISION	PROJECT NO.	SHEET NUMBER
VIII	COLORADO	Project IR(CX) 070-4(143)	
AIRPARK RD - EAST			
RIGHT OF WAY			
REVISIONS			



COLO DEPT OF HIGHWAYS
 +
 Sta. 615+22
 El. 5524.23
 R O W MARKER

COLO DEPT OF HIGHWAYS
 +
 Sta.
 El. 5550.67

COLO DEPT OF HIGHWAYS
 +
 Sta. 615+22
 El.
 R O W MARKER

COLO DEPT OF HIGHWAYS
 STATE HWY
 MILE POST XXX.X
 CONTROL MONUMENT

LIND ENGINEERING, INC.
 T3S R65W
 S 31
 1/4 S 6
 T4S



DEPARTMENT OF TRANSPORTATION - STATE OF COLORADO CONTROL SURVEY DIAGRAM

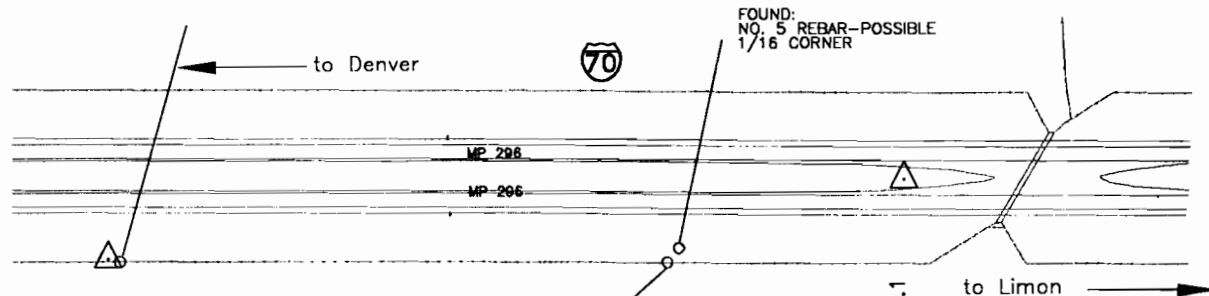
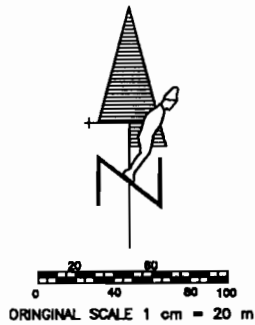
Project IR(CX) 070-4(143)
 I-70 MP 290.00 to MP 295.00
 Secs. 32, 33, 34, 35, & 36, T. 3 S., R. 65 W., 6th P.M.
 Sec. 31, T. 3 S., R. 64 W., 6th P.M.
 Secs. 1, 2, 3, 4, & 5, T. 4 S., R. 65 W., 6th P.M.
 Sec. 6, T. 4 S., R. 64 W., 6th P.M.
 ARAPAHOE COUNTY, COLORADO

FEDERAL ROAD REGION NO.	DIVISION	PROJECT NO.	SHEET NUMBER
III	COLORADO	Project IR(CX) 070-4(143)	3G
AIRPARK RD - EAST		REVISIONS	



FOUND:
 ROW MARKER STA. 667+87
 N 16930.268
 E 492534.524

Elevation Datum Unknown
 NOT TO SCALE
 ROW MARKER - CDOH Brass cap, set in concrete, stamped as shown



SET:
 I-70 CM-MP 295.9
 N 16931.671
 E 492528.235
 EL 1691.34

FOUND:
 POSSIBLE REFERENCE
 TO 1/16 CORNER

SET:
 I-70 CM-MP 296.1
 N 16972.668
 E 492950.114
 EL 1692.63



Typical Control Monument Cap
 NOT TO SCALE

CM-MP - Control Monuments were set by CDOT. They were CDOT Type 2 monuments, a 3-1/4" dia. aluminum control monument cap (as shown) on a 3" x 3/4" dia. fitted aluminum security rod on a 3" x 3/4" dia. smooth aluminum rod.