

DEPARTMENT OF TRANSPORTATION STATE OF COLORADO

RIGHT OF WAY
I-270 at I-76

RIGHT OF WAY PLAN OF PROPOSED FEDERAL AID PROJECT NO. IR(CX) 270-6(26) UNIT 1 STATE HIGHWAY NO. 270 ADAMS COUNTY RIGHT OF WAY

FED. ROAD REGION	DIVISION	PROJECT NUMBER	SHEET NUMBER
VIII	COLO.	IR(CX) 270-6(26) UNIT 1	1
SECTIONS			

SCALES OF ORIGINAL DRAWINGS
R.O.W. PLAN SHEET 1"=100'

R.O.W. LENGTH OF PROJECT = 971.14' = 0.184 MI.

INDEX OF SHEETS

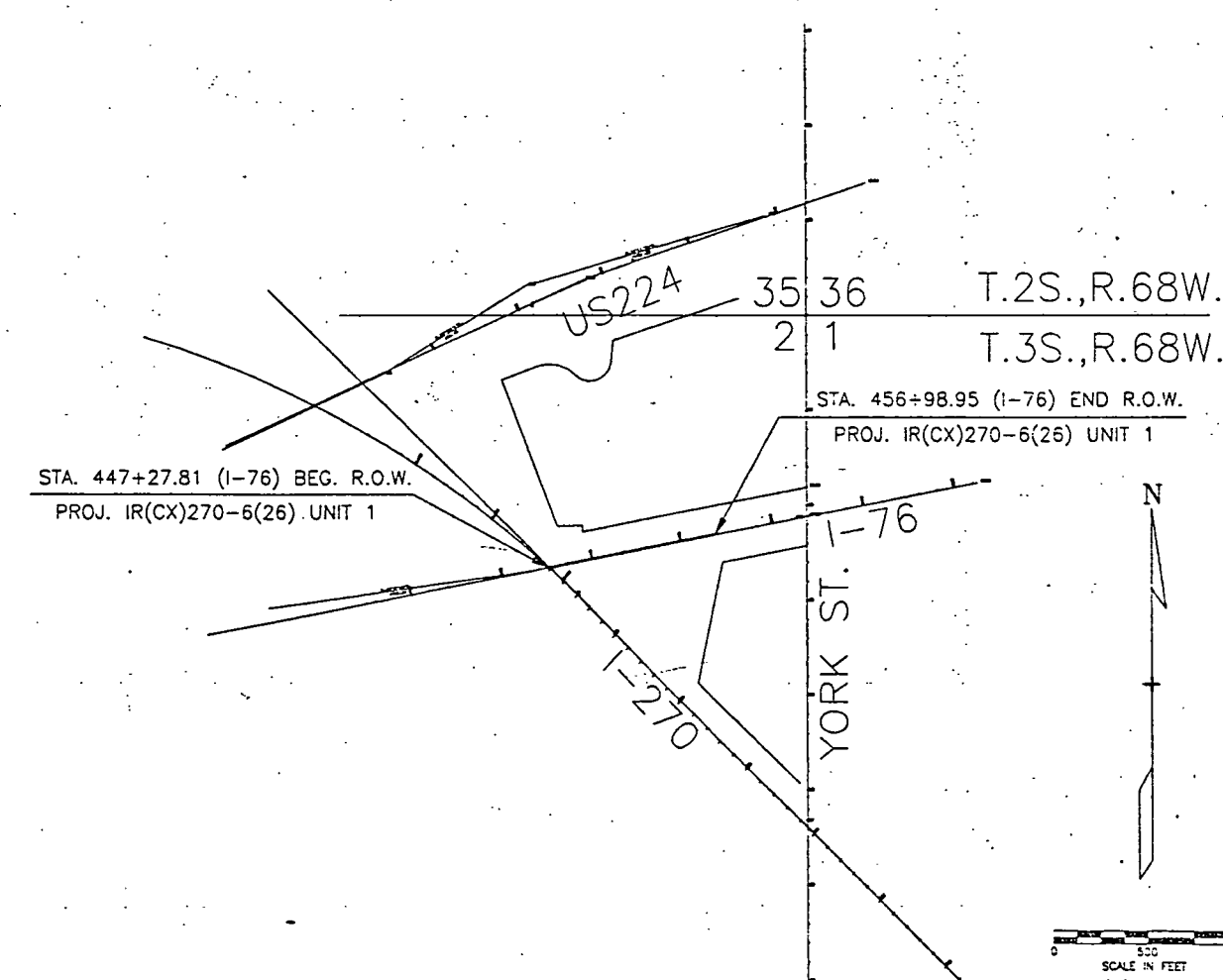
1	TITLE SHEET
2	TABULATION OF PROPERTIES SHEET
3A, 3AAA, 3AAAI 3G, 3H	CONTROL AND MONUMENTATION SHEETS
4	PLAN SHEETS

CONVENTIONAL SIGNS

County Line	-----
Township or Range Line	-----
Land Lines	Section Line 1/4 Section Line 1/16 Section Line
Property or Tract Line	-----
City Limits	-----
Railroad	-----
Existing Road	-----
New Road	-----
Control of Access	-----
Access denied by Deed	-----
Right of Way Line	-----
Protected by Freeway (Virgin Location)	-----
Top of Cuts	-----
Toe of Fills	-----
Barbed Wire Fence	-----
Chain Link Fence	-----
Woven Wire-Combination Fence	-----
Snow Fence	-----
Wood Fence	-----
Deer Fence	-----
Trees	Deciduous Coniferous
Tel. & Teleg. Lines	-----
Electric Lines	-----
Elec. Trans. Tower	-----
Buried Tel. Cable	-----
Buried Electric Cable	-----
Gas Main	-----
Oil Main	-----
Water Main	-----
Sanitary Sewers	-----
Storm Sewers	-----
Road Approaches	-----
Section Corner	-----
Culverts & Drains	-----
Bridges	-----

BASIS OF BEARINGS

THE EAST LINE OF THE NE 1/4 OF THE NE 1/4 OF SEC. 2 HAS A GRID BEARING OF S.00°04'47"E. THIS BEARING WAS COMPUTED BY INVERTING COORDINATES OF THE NE CORNER OF SEC. 2 AND THE SE CORNER OF THE NE 1/4 OF THE NE 1/4 OF SEC. 2, SAID COORDINATES BEING FROM A CORP. PUBLISHED CONTROL AND MONUMENTATION SHEET #3AAA ON PROJ. NO. IR(CX)270-6(26) SH 270. THE CONVERGENCE ANGLE FROM GRID TO GEODETIC IS 02°00'32" (ROTATED CLOCKWISE). THE NE CORNER OF SEC. 2 IS A 3.6714' ALUMINUM CAP IN A MONUMENT BOX AND THE SE CORNER OF THE NE 1/4 OF THE NE 1/4 OF SEC. 2 IS A #3 PEG.



V-file

DISTRICT NO. 6
PRELIMINARY PLANS
SUBJECT TO CHANGES
DATE SEP 9 1992

DEPARTMENT OF TRANSPORTATION FEDERAL HIGHWAY ADMINISTRATION	
AUTHORIZED _____	DATE _____
DIVISION ADMINISTRATOR	

08/26/92 07:16:02 D:\KIRRY\BONANZA\BONSH1190087.DRAW

QIR 2706-018

FED. ROAD REGION	DIVISION	PROJ. NO.	SHEET NO.
III	COLO.	REC'D 270-6(26) UH 1	2
REVISIONS			
11/09/92	ADD PAR. 140		RS
7/29/94	ADD PAR. 140R		RS
11/17/94	ADD PAR. 139		RS

R.O.W. TABULATION OF PROPERTIES IN THE CITY AND COUNTY OF DENVER

S.H. NO. 1-76 & 1-270

RIGHT OF WAY
1-270 AT 1-76

PARCEL NO.	OWNER	ADDRESS	LOCATION	AREA IN SQ. FT.				PARCEL NO.	REMARKS
				PARCEL	TO BE ACQUIRED	REMAINDER			
			Sec. 2, T.3S., R.68W., 6th P.M.			LEFT	RIGHT		
139	SIEGRIST CONSTRUCTION CO., a Colorado corporation	6999 York Street Denver, CO 80221	Lots 1 & 2, Block 1, TRIANGLE DEVELOPMENT COMPANY SUBDIVISION NE 1/4 Section 2	360,493	360,493	TOTAL	TAKE	139	
140	Raymond E. Hardison & Genevieve Hardison		SE 1/4 OF THE NE 1/4	41,272	41,272	---	---	140	
157	Marvin D. Hastings and Gary D. Hastings	5690 North Federal Blvd. Denver, CO 80221	Lot 1, BONANZA SUBD. a resubd. of Lots 1 thru 6 (incl.) of NORTH YORK INDUSTRIAL CENTER NE 1/4 of the NE 1/4	282,816	282,816	1,122,585	---	157	
TE-157	Same as Parcel 157			5,452	---	---	---	TE-157	
140R	COLORADO DEPARTMENT OF TRANSPORTATION	4301 E. Arkansas Denver, CO 80222	SE 1/4 OF THE NE 1/4	20,059	---	---	---	140R	

11/14/94 07:59:27 D:\YORK\TZYORK 90CB7 REC.6-ROW\JDS

CONTROL AND MONUMENTATION SHEET

ALL COORDINATES LISTED ARE IN U.S. SURVEY FEET, ON PROJECT SPECIFIC COORDINATE SYSTEM.

FED. ROAD REGION	DIVISION	PROJECT NUMBER	SHEET NUMBER
VIII	COLO.	IR(CX)1270-6(26) UNIT I	3AAA
REVISIONS			

TABULATION OF SURVEY CONTROL POINTS

POINT	NORTHING	EASTING	DESCRIPTION OF MONUMENTS	POINT	NORTHING	EASTING	DESCRIPTION OF MONUMENTS
201	728172.57	155466.33	CDOM TYPE 1	472	727209.919	145780.311	3 1/4" ALUMINIUM CAP
202	728250.34	154375.56	CDOM TYPE 1	475	726943.437	144208.350	3 1/4" ALUMINIUM CAP
203	727751.51	153347.074	CDOM TYPE 1	500	727971.49E	146018.59E	CDOM TYPE 1
204	726935.58	151024.96	CDOM TYPE 1	502	730516.322	145783.50E	CDOM TYPE 1
205	726611.453	153336.48E	CDOM TYPE 1	503	733723.54E	145349.719	CDOM TYPE 1
206	725855.49	148534.584	CDOM TYPE 1	504	732963.314	145492.023	CDOM TYPE 1
207	725553.941	147262.767	1 1/2" ALUMINIUM CAP	505	735330.150	145670.507	CDOM TYPE 1
208	72707.144	147350.474	1 1/2" ALUMINIUM CAP	506	734835.922	144886.977	CDOM TYPE 1
209	727446.31E	147265.41E	CDOM TYPE 1	507	734070.969	145097.245	CDOM TYPE 1
210	727476.4E	148402.35E	1 1/2" ALUMINIUM CAP	508	733007.172	145330.693	CDOM TYPE 1
211	727454.69E	149260.52E	1 1/2" ALUMINIUM CAP	509	732037.635	145507.673	CDOM TYPE 1
212	726651.99E	149287.737	1 1/2" ALUMINIUM CAP	511	729318.321	145678.107	CDOM TYPE 1
213	725943.99E	152621.80E	1 1/2" ALUMINIUM CAP	514	729410.854	145522.182	CDOM TYPE 1
214	725356.01E	152551.961	1 1/2" ALUMINIUM CAP	515	730025.267	145397.815	CDOM TYPE 1
215	724604.48E	152610.33E	1 1/2" ALUMINIUM CAP	516	730633.85E	145319.97E	CDOM TYPE 1
216	726756.980	143251.500	CDOM TYPE 1	517	731278.263	145401.802	CDOM TYPE 1
217	726816.477	143988.794	CDOM TYPE 1	518	731817.567	145363.325	CDOM TYPE 1
218	726830.43E	144562.807	CDOM TYPE 1	519	732463.46E	145222.168	CDOM TYPE 1
219	726854.72E	145297.943	CDOM TYPE 1	520	733609.659	145080.504	CDOM TYPE 1
220	726972.09E	145017.850	CDOM TYPE 1	521	732440.842	145644.59E	CDOM TYPE 1
221	726947.7E1	143370.04E	CDOM TYPE 1	522	731087.322	148065.909	CDOM TYPE 1
222	726946.89E	142784.40E	CDOM TYPE 1	523	728094.271	146225.623	CDOM TYPE 1
223	727077.284	142176.11E	CDOM TYPE 1	524	734588.304	146569.56E	CDOM TYPE 1
224	727294.74E	141532.310	CDOM TYPE 1	525	728515.932	144525.81E	CDOM TYPE 1
225	728029.56E	139469.55E	CDOM TYPE 1	526	727177.29E	144628.24E	CDOM TYPE 1
226	728309.112	138721.57E	CDOM TYPE 1	527	729449.09E	144884.524	CDOM TYPE 1
227	728593.012	137994.15E	1 1/2" ALUMINIUM CAP	528	731094.35E	147319.551	CDOM TYPE 1
228	728750.322	137594.99E	CDOM TYPE 1	529	732045.51E	145266.633	CDOM TYPE 1
229	729335.697	135842.273	CDOM TYPE 1	530	732084.871	145222.293	CDOM TYPE 1
230	729913.422	134763.36E	CDOM TYPE 1	531	726936.334	156140.661	CDOM TYPE 1
231	730705.48E	133707.741	CDOM TYPE 1	532	726413.26E	155208.917	CDOM TYPE 1
232	729743.811	134022.480	CDOM TYPE 1	533	726181.452	154270.485	CDOM TYPE 1
233	729185.087	134336.219	CDOM TYPE 1	534	725837.559	152390.149	CDOM TYPE 1
234	729496.172	134882.323	CDOM TYPE 1	535	725695.08E	151413.905	CDOM TYPE 1
235	733289.314	135743.467	CDOM TYPE 1	536	725438.510	150367.599	CDOM TYPE 1
236	729105.74E	136275.723	CDOM TYPE 1	537	724677.227	148111.204	CDOM TYPE 1
237	728866.651	136932.42E	CDOM TYPE 1	538	724393.84E	149010.774	CDOM TYPE 1
238	728573.38E	137734.40E	CDOM TYPE 1	539	725276.353	150073.503	CDOM TYPE 1
239	728163.531	138949.323	CDOM TYPE 1	540	725590.417	152024.927	CDOM TYPE 1
240	727933.741	139470.04E	CDOM TYPE 1	541	725778.26E	152917.91E	CDOM TYPE 1
241	727693.02E	140062.33E	3 1/4" BRASS CAP	542	725944.263	153781.02E	CDOM TYPE 1
242	727149.857	141587.844	CDOM TYPE 1	543	726174.791	154911.423	CDOM TYPE 1
243	726948.30E	142135.731	CDOM TYPE 1	544	726602.523	155911.937	CDOM TYPE 1
244	728152.01E	139329.487	CDOM TYPE 1	545	727206.504	156675.107	CDOM TYPE 1
245	728890.470	139492.834	CDOM TYPE 1	546	727769.274	157260.301	CDOM TYPE 1
246	727313.231	139413.104	CDOM TYPE 1	547	725844.877	153261.87E	3 1/4" ALUMINIUM CAP
247	729427.452	139842.644	NAI	548	724882.28E	148647.820	1 1/2" ALUMINIUM CAP
248	729925.06E	140765.71E	NAI	549	720422.870	156345.181	CDOM TYPE 1
249	730322.73E	141400.572	CROSS CUT ON TOP OF CURBHEAD	550	719885.211	157063.845	CDOM TYPE 1
250	729378.671	141853.04E	NAI	551	720591.30E	156333.943	CDOM TYPE 1
251	728913.071	142250.02E	CROSS CUT ON TOP OF CURBHEAD	552	721358.26E	155541.149	CDOM TYPE 1
252	729015.08E	142517.561	CROSS CUT ON TYPE 13 INLET	553	722558.641	154305.11E	CDOM TYPE 1
253	728501.03E	142766.801	NAI	554	723269.001	153576.905	CDOM TYPE 1
254	728811.38E	143362.551	NAI	555	724271.854	152533.937	CDOM TYPE 1
255	728555.63E	144624.907	NAI	556	725203.26E	151573.402	CDOM TYPE 1
256	730892.05E	134046.761	CDOM TYPE 1	557	725412.715	151013.48E	CDOM TYPE 1
257	732047.10E	134147.800	3/4" BOLT AND WASHER WITH CROSS	558	724965.04E	151625.779	CDOM TYPE 1
258	731997.23E	135390.841	CROSS SCRIBED ON CONCRETE	559	724338.730	152299.584	CDOM TYPE 1
259	730710.531	136739.802	NAI	560	723535.123	153130.704	CDOM TYPE 1
260	729390.80E	137797.259	NAI	561	722594.34E	154094.585	CDOM TYPE 1
261	729393.687	138575.788	NAI	562	721895.57E	154822.80E	CDOM TYPE 1
262	729446.88E	141961.443	NAI	563	721257.23E	155485.367	CDOM TYPE 1
263	729379.14E	141990.35E	NAI	564	716432.52E	159456.91E	CDOM TYPE 1
264	729357.85E	141945.46E	CROSS SCRIBED ON WALK	565	725432.180	146453.479	HUB AND TACK
265	726731.673	138385.99E	CROSS SCRIBED ON WALK	566	721515.844	151340.04E	NAI
266	726711.510	135313.937	SCRIBED CROSS	567	724138.071	149907.721	HUB AND TACK
267	726770.674	134051.74E	CROSS SCRIBED ON WALK	568	724166.273	147583.83E	HUB AND TACK
268	728026.701	134049.391	CROSS SCRIBED ON WALK	569	724135.25E	147586.424	1 1/2" ALUMINIUM CAP
269	725466.41E	143205.25E	CROSS SCRIBED ON WALK	570	724838.18E	147263.177	CDOM TYPE 1
270	726044.771	143401.129	SCRIBED CROSS	571	725490.61E	145633.94E	CROSS SCRIBED ON CONCRETE
271	726595.184	143197.53E	CDOM TYPE 1	572	724712.72E	144613.91E	1 1/2" ALUMINIUM CAP
272	726675.05E	142579.95E	CDOM TYPE 1	573	722767.300	152557.990	1 1/2" ALUMINIUM CAP
273	726778.59E	141350.384	NAI	574	720962.643	152390.82E	1 1/2" ALUMINIUM CAP
274	726762.019	139868.860	NAI	575	719959.29E	152439.150	1 1/2" ALUMINIUM CAP
275	727367.4E3	152361.10E	1 1/2" ALUMINIUM CAP	576	719365.2E	152638.080	1 1/2" ALUMINIUM CAP
276	725320.99E	149561.04E	1 1/2" ALUMINIUM CAP	577	719498.124	152862.25E	1 1/2" ALUMINIUM CAP
277	725001.534	146438.31E	1 1/2" ALUMINIUM CAP	578	719623.229	154544.10E	1 1/2" ALUMINIUM CAP
278	729336.957	145527.064	3 1/4" ALUMINIUM CAP	579	718914.33E	156267.5E	NAI
279	729289.94E	147734.03E	3 1/4" ALUMINIUM CAP	580	718915.5E	157302.99E	NAI AND SHINER IN TOP OF GUARD RAIL POST
280	726855.057	147705.969	3 1/4" ALUMINIUM CAP	581	726399.211	157376.077	NAI
281	730726.143	145578.79E	3 1/4" ALUMINIUM CAP	582	723614.944	154987.70E	SCRIBED CROSS

TABULATION OF G.P.S. POINTS

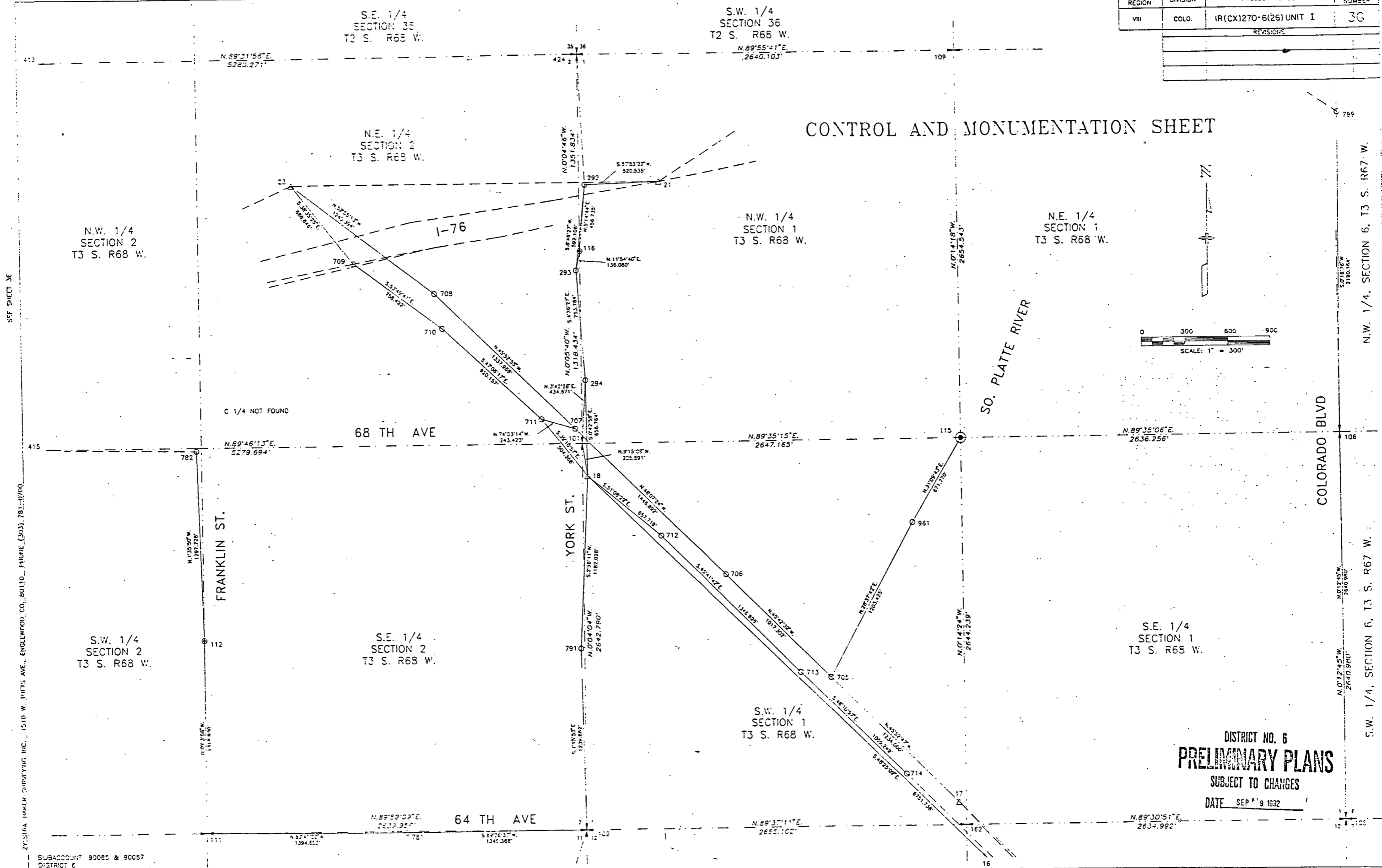
POINT	NORTHING	EASTING	DESCRIPTION OF MONUMENTS
1E	1.06004E	719293.073	157509.509 CDOM TYPE 2
17	1.06403E	721599.571	155190.990 CDOM TYPE 1
18	1.06902E	723947.77E	152618.541 CDOM TYPE 1
19	1.07403E	728022.070	156391.37E CDOM TYPE 1
20	1.07902E	727178.189	151762.247 CDOM TYPE 1
21	1.07002E	725963.15E	153141.990 CDOM TYPE 2
22	1.07002E	725523.43E	151586.404 CDOM TYPE 2
23	1.07002E	725951.13E	150583.820 CDOM TYPE 2
24	1.07101E	726141.63E	149241.434 CDOM TYPE 2
25	1.07002E	725493.24E	147971.841 2 1/2" CDOM ALUMINIUM DISK STAMPED "419"
26	1.06900E	724816.68E	147584.78E CDOM TYPE 2A
27	1.07200E	727224.200	146253.84E 3 1/4" CDOM ALUMINIUM DISK STAMPED "44Z"
28	1.07502E	728713.857	145559.167 CDOM TYPE 2
29	1.07600E	729817.159	145937.24E CDOM TYPE 2
30	1.08002E	732075.087	147827.463 1 1/2" DIAMETER AXLE IN RANGE BOX, N.W. COR. SEC. 35, T2S, R68W
31	1.07600E	731928.732	145664.653 CDOM TYPE 2
32	1.08403E	734674.153	145235.431 3 1/4" ALUMINIUM DISK SET IN CONCRETE SIDEWALK
33	1.08403E	734845.967	147274.140 CDOM TYPE 2
34	1.07000E	725817.89E	144450.949 CDOM TYPE 2
35	1.07203E	726817.83E	142697.974 3 1/4" CDOM ALUMINIUM DISK
36	1.07407E	727721.994	140439.029 3 1/4" CDOM ALUMINIUM DISK STAMPED "47E"
37	1.07602E	728986.421	138940.86E CDOM TYPE 1
38	1.074030E	728408.42E	134045.60E CDOM TYPE 2
39	1.079030E	730375.4E	134173.211 CDOM TYPE 2
40		726811.797	139431.887 CDOM TYPE 1
41		72931.01E	139422.541 CDOM TYPE 1
42		727804.027	147344.169 CDOM TYPE 1
95/1.06604E (VASQUEZ)	716789.4E2	159964.510	3 1/4" ALUMINIUM DISK IN ACCESS COVER

TABULATION OF SECTION CORNERS

POINT	NORTHING	EASTING	DESCRIPTION OF MONUMENTS
30	732075.087	147287.463	1 1/2" DIAMETER AXLE IN RANGE BOX, N.W. COR. SEC. 35, T2S, R68W
101	724170.72E	152582.222	3 1/4" ALUMINIUM CAP IN RANGE BOX, E 1/4 COR. SEC. 2, T3S, R68W
102	721527.940	152585.354	3 1/4" ALUMINIUM CAP IN RANGE BOX, S.W. COR. SEC. 2, T3S, R68W
103	718890.870	152591.917	3 1/4" ALUMINIUM CAP IN MONUMENT BOX, W 1/4 COR. SEC. 12, T3S, R68W
104	718928.28E	155239.59E	BRASS CAP IN MONUMENT BOX, CTR 1/4 COR. SEC. 12, T3S, R68W
105	721567.911	157875.294	3 1/4" ALUMINIUM CAP IN MONUMENT BOX, N.E. COR. SEC. 12, T3S, R68W
106	724208.873	157865.50E	3 1/4" ALUMINIUM CAP IN MONUMENT BOX, E 1/4 COR. SEC. 1, T3S, R68W
107	726850.353	157854.40E	3 1/4" ALUMINIUM CAP IN MONUMENT BOX, N.E. COR. SEC. 1, T3S, R68W
108	718924.81E	157866.331	3 1/4" ALUMINIUM CAP IN MONUMENT BOX, E 1/4 COR. SEC. 12, T3S, R68W
109	726844.303	155218.27E	3 1/4" ALUMINIUM CAP SET IN CONCRETE, N 1/4 COR. SEC. 1, T3S, R68W
110	729460.510	152579.451	#1 REBAR, E 1/4 COR. SEC. 35, T2S, R68W
111	721521.91E	149945.40E	1" DIAMETER AXLE IN RANGE BOX, S 1/4 COR. SEC. 2, T3S, R68W
112	722840.847	149943.89E	#9 REBAR IN RANGE BOX, S 1/16 COR. SEC. 2, T3S, R68W
113	724154.712	148622.43E	#8 REBAR IN RANGE BOX, W 1/16 COR. SEC. 2, T3S, R68W
114	716281.863	157897.102	CROSS MARKED ON STONE IN MONUMENT BOX, S.E. COR. SEC. 12, T3S, R68W
115	724189.783	155229.31E	3 1/4" ALUMINIUM CAP IN RANGE BOX, CTR 1/4 COR. SEC. 1, T3S, R68W
116	725489.160	152580.051	#3 REBAR, N 1/16 COR. SEC. 1, T3S, R68W
151	726775.453	14201	

FED. ROAD REGION	DIVISION	PROJECT NUMBER	SHEET NUMBER
VIII	COLO.	IR(CX)270-6(26) UNIT I	30
REVISIONS			

CONTROL AND MONUMENTATION SHEET

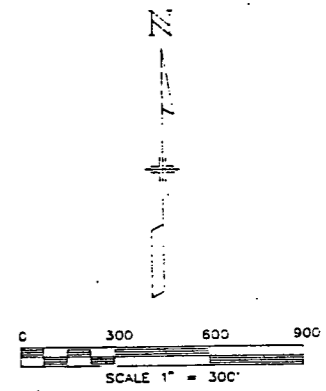
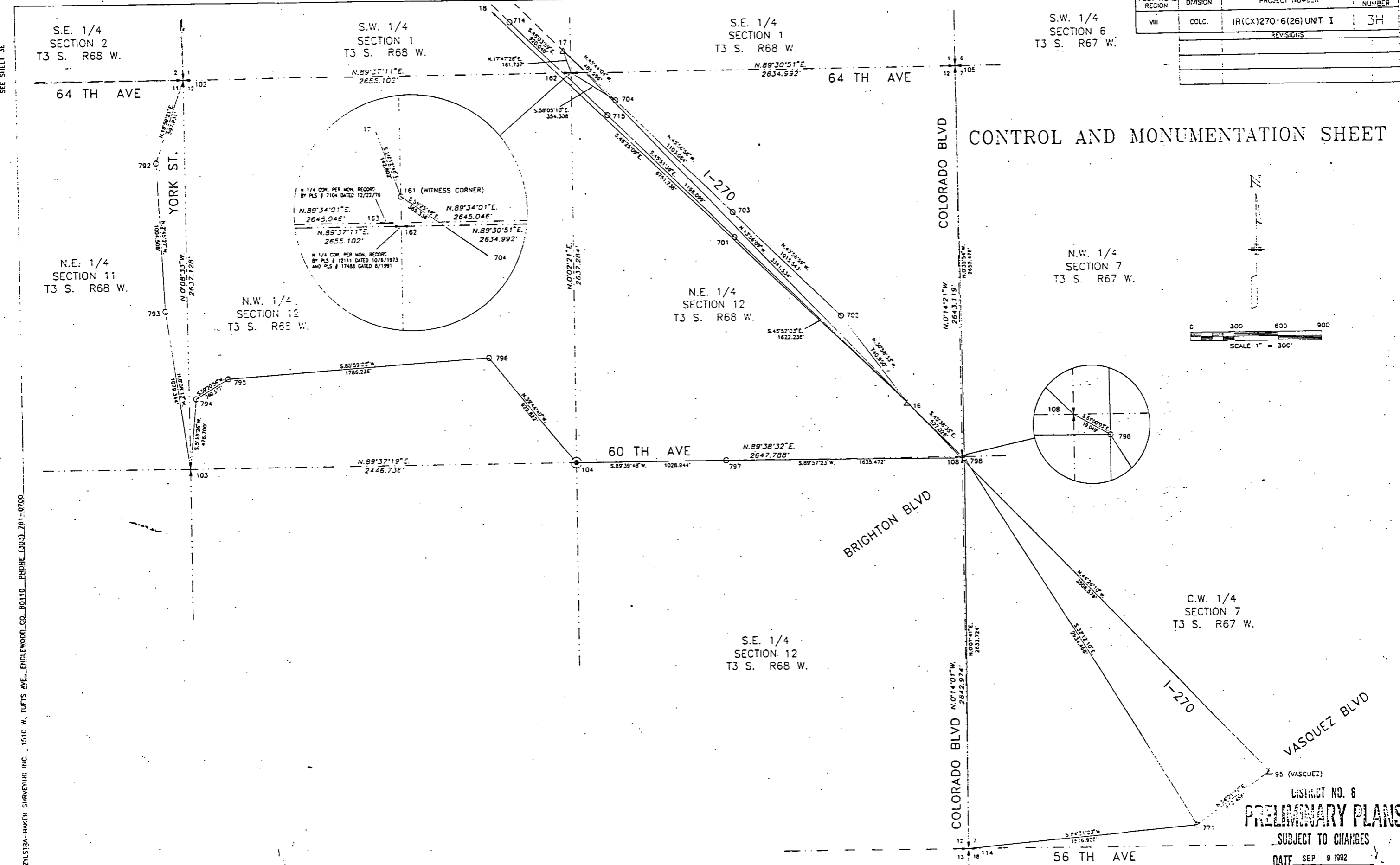


DISTRICT NO. 6
PRELIMINARY PLANS
 SUBJECT TO CHANGES
 DATE SEP 9 1932

SEE SHEET 3C

FED. ROAD REGION	DIVISION	PROJECT NUMBER	SHEET NUMBER
VIII	COLC.	IR(CX)270-6(26) UNIT I	3H
REVISIONS			

CONTROL AND MONUMENTATION SHEET



SEE SHEET 3E

S.E. 1/4 SECTION 2 T3 S. R68 W.

S.W. 1/4 SECTION 1 T3 S. R68 W.

S.E. 1/4 SECTION 1 T3 S. R68 W.

S.W. 1/4 SECTION 6 T3 S. R67 W.

N.E. 1/4 SECTION 11 T3 S. R68 W.

N.W. 1/4 SECTION 12 T3 S. R68 W.

N.E. 1/4 SECTION 12 T3 S. R68 W.

N.W. 1/4 SECTION 7 T3 S. R67 W.

60 TH AVE

BRIGHTON BLVD

COLORADO BLVD

COLORADO BLVD

VASQUEZ BLVD

C.W. 1/4 SECTION 7 T3 S. R67 W.

S.E. 1/4 SECTION 12 T3 S. R68 W.

56 TH AVE

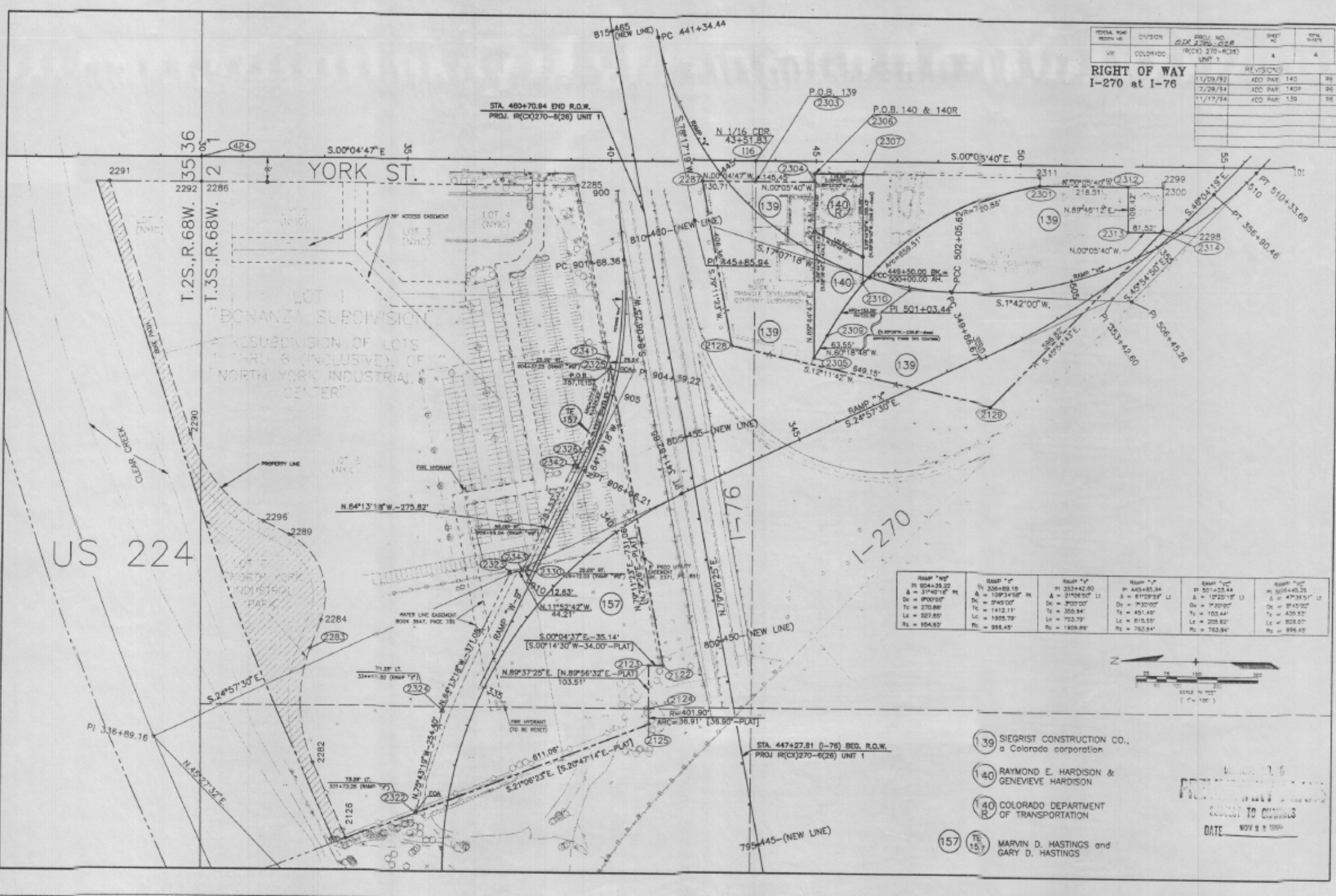
PRELIMINARY PLANS

SUBJECT TO CHANGES

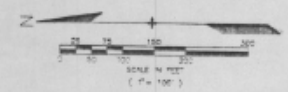
DATE SEP 9 1992

TOTAL SHEET NO.	DIVISION	PROJ. NO.	SHEET NO.	TOTAL SHEETS
11	COLORADO	270-6(28)	4	4

RIGHT OF WAY I-270 at I-76			
DATE	BY	REVISIONS	NO.
11/09/92	ADD	ADD P&E	140
7/29/94	ADD	ADD P&E	140P
11/17/94	ADD	ADD P&E	139



RAMP "W"	RAMP "V"	RAMP "F"	RAMP "P"	RAMP "T"	RAMP "C"
PI 904+29.20	PI 335+42.80	PI 445+85.04	PI 501+03.44	PI 505+45.26	PI 505+45.26
$\Delta = 37451.16'$	$\Delta = 10934.68'$	$\Delta = 61092.00'$	$\Delta = 12221.18'$	$\Delta = 47385.51'$	$\Delta = 47385.51'$
$D_c = 8700.00'$	$D_c = 2945.00'$	$D_c = 3002.00'$	$D_c = 7450.00'$	$D_c = 2745.00'$	$D_c = 2745.00'$
$T_c = 270.88'$	$T_c = 1412.11'$	$T_c = 300.94'$	$T_c = 451.42'$	$T_c = 103.44'$	$T_c = 439.82'$
$L_c = 527.80'$	$L_c = 1905.79'$	$L_c = 702.79'$	$L_c = 615.55'$	$L_c = 205.62'$	$L_c = 828.01'$
$R_c = 958.83'$	$R_c = 998.42'$	$R_c = 1809.88'$	$R_c = 762.84'$	$R_c = 762.84'$	$R_c = 998.42'$



- (139) SIEGRIST CONSTRUCTION CO., a Colorado corporation
- (140) RAYMOND E. HARDISON & GENEVIEVE HARDISON
- (140P) COLORADO DEPARTMENT OF TRANSPORTATION
- (157) (TE 157) MARVIN D. HASTINGS and GARY D. HASTINGS

NOV 2 1994
 DATE NOV 2 1994

11/22/94 13:22:18 D:\YORK\BONISH4 900B7 REG.6-ROW\JDS