

(R-1) WATER LINE RELOCATION
Added Power Line P.D.L. 7-13-84

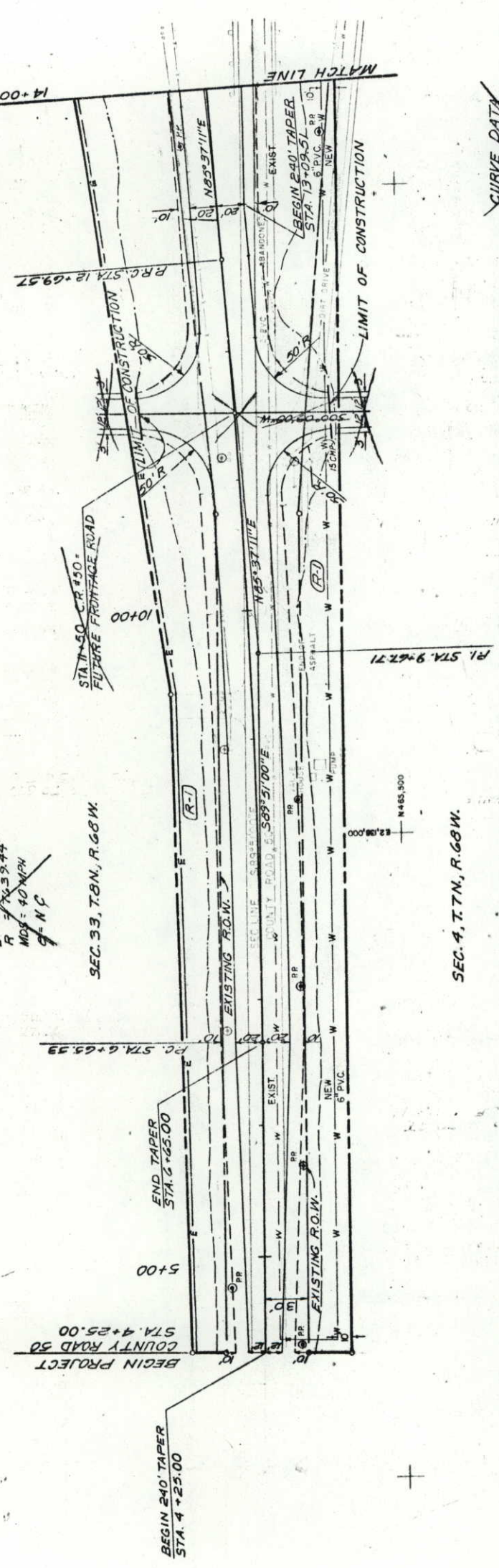
NO REVISIONS AS CONSTRUCTED REVISED 7-20-85 VOID

SEE ALIGNMENT SHEET FOR CURVE DATA

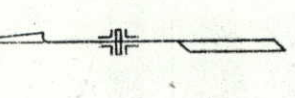
~~CURVE DATA
A = 04°31'49"
D = 0'45"
L = 302.18'
R = 104.04'
R = 70.3944'
MDS = 40 MPH
E = NC~~

SEC. 33, T.8N, R.68W.

SEC. 4, T.7N, R.68W.

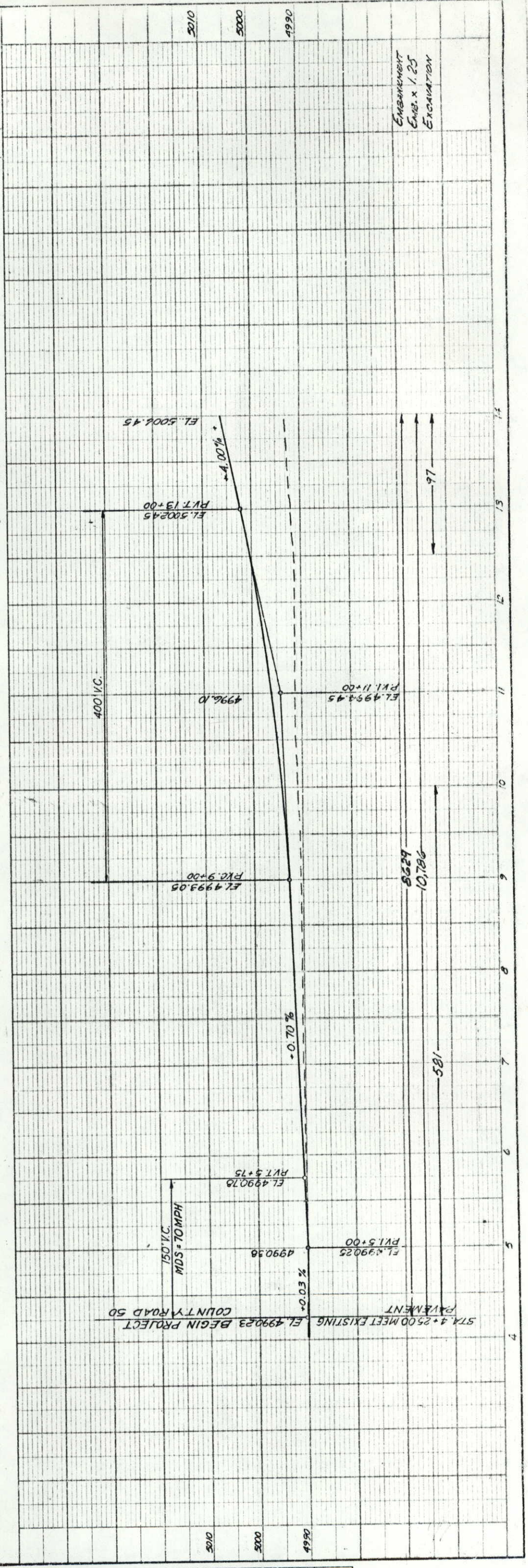


~~CURVE DATA
A = 04°27'57"
D = 0'45"
L = 297.07'
R = 105.549'
R = 70.3944'
MDS = 40 MPH
E = NC~~



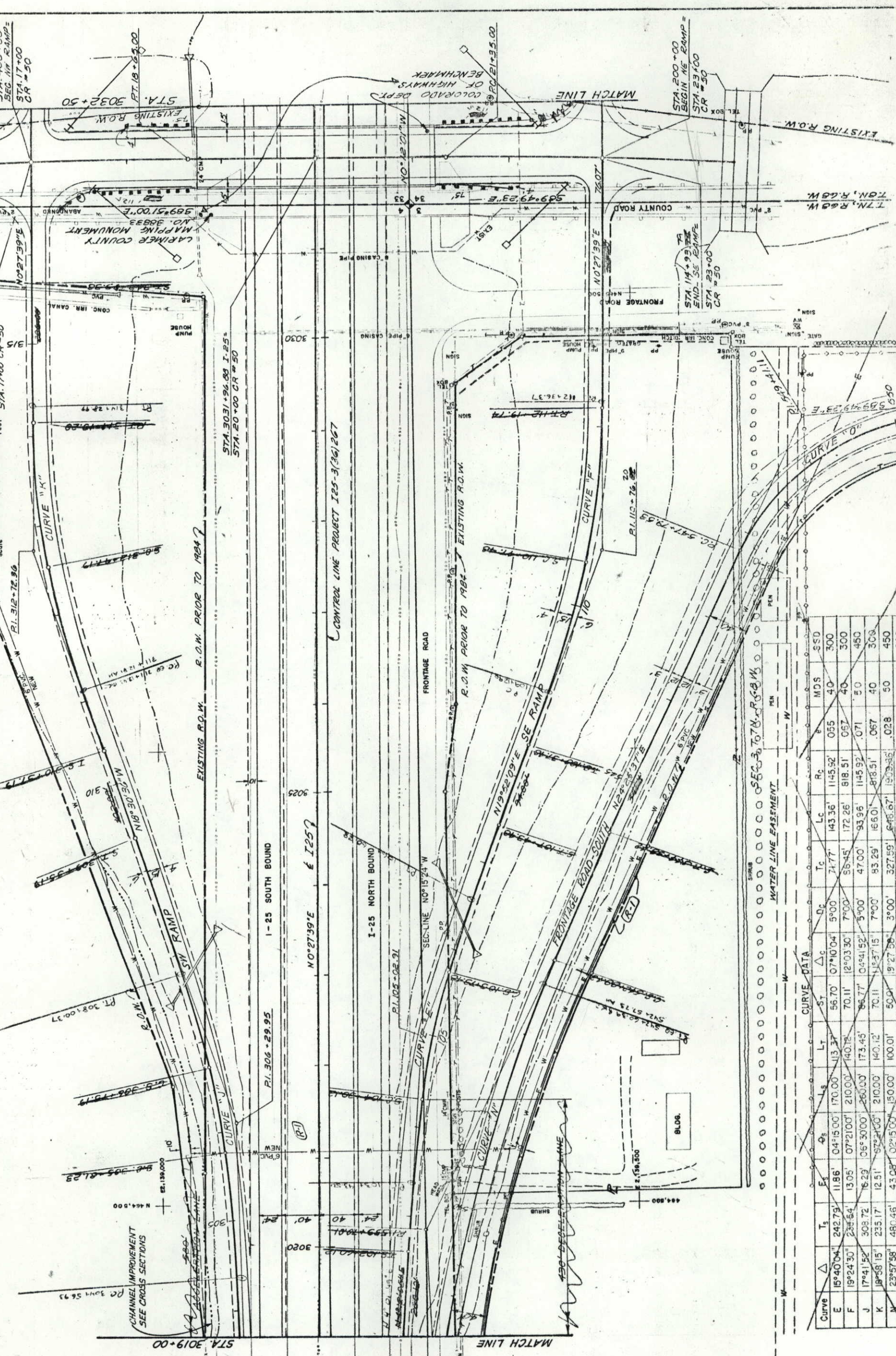
NO.	DATE	BY	REVISION

NO.	DATE	BY	REVISION



EMBANKMENT
EXCAVATION

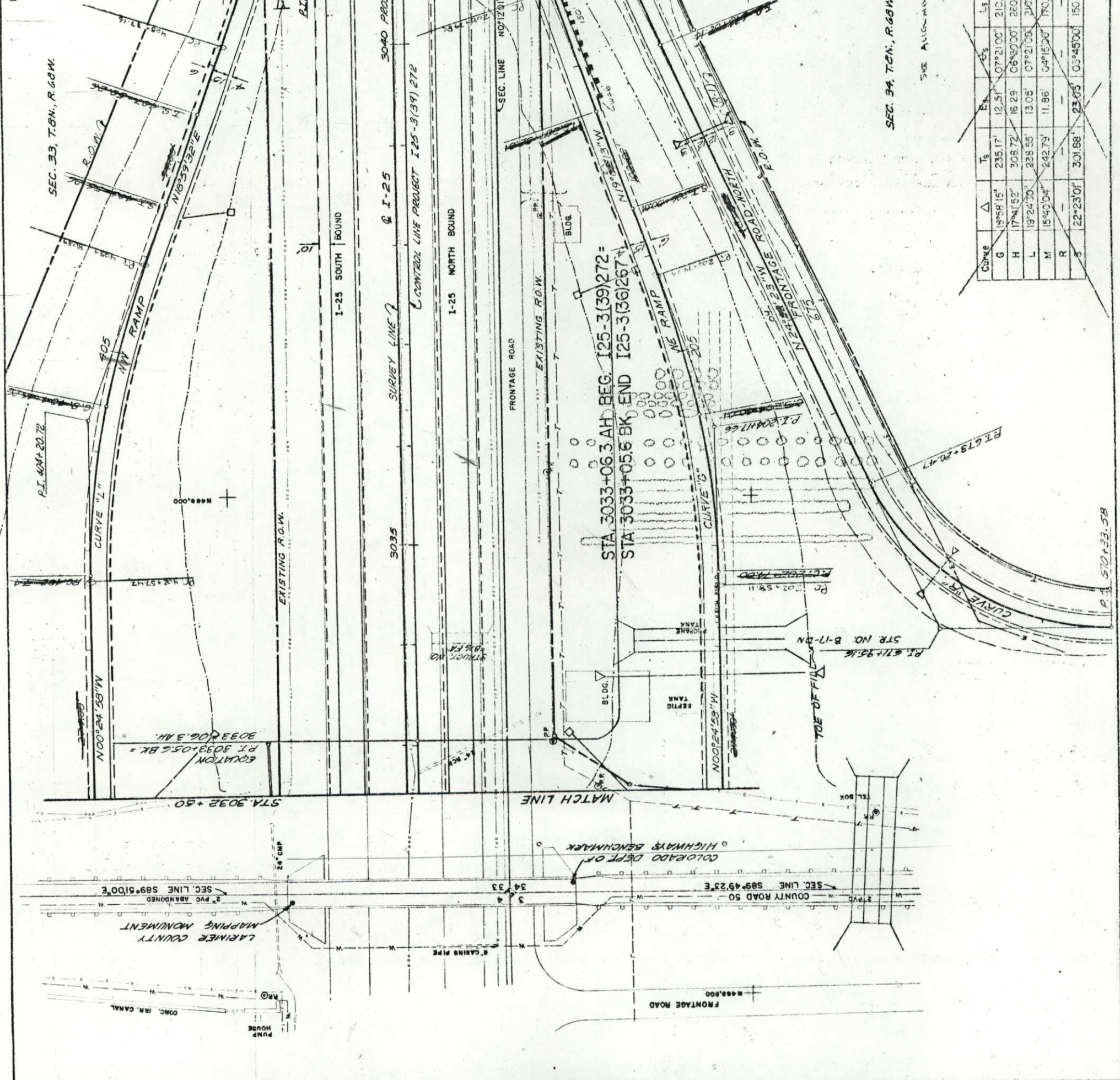
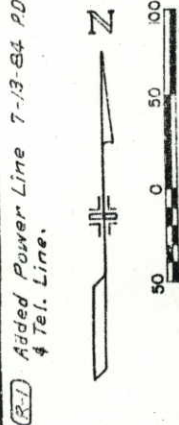
(R-1) Added Power Line & Tel. Line And WATER LINE RELOCATION FOL. 7-13-84
 SEC. 4, T. 7N., R. 68W.
 CHANNEL IMPROVEMENT SEE CROSS SECTIONS
 STA. 3019+00
 STA. 3020+00
 STA. 3025+00
 STA. 3030+00
 STA. 3035+00
 STA. 3040+00
 STA. 3045+00
 STA. 3050+00
 STA. 3055+00
 STA. 3060+00
 STA. 3065+00
 STA. 3070+00
 STA. 3075+00
 STA. 3080+00
 STA. 3085+00
 STA. 3090+00
 STA. 3095+00
 STA. 3100+00
 STA. 3105+00
 STA. 3110+00
 STA. 3115+00
 STA. 3120+00
 STA. 3125+00
 STA. 3130+00
 STA. 3135+00
 STA. 3140+00
 STA. 3145+00
 STA. 3150+00
 STA. 3155+00
 STA. 3160+00
 STA. 3165+00
 STA. 3170+00
 STA. 3175+00
 STA. 3180+00
 STA. 3185+00
 STA. 3190+00
 STA. 3195+00
 STA. 3200+00
 STA. 3205+00
 STA. 3210+00
 STA. 3215+00
 STA. 3220+00
 STA. 3225+00
 STA. 3230+00
 STA. 3235+00
 STA. 3240+00
 STA. 3245+00
 STA. 3250+00
 STA. 3255+00
 STA. 3260+00
 STA. 3265+00
 STA. 3270+00
 STA. 3275+00
 STA. 3280+00
 STA. 3285+00
 STA. 3290+00
 STA. 3295+00
 STA. 3300+00
 STA. 3305+00
 STA. 3310+00
 STA. 3315+00
 STA. 3320+00
 STA. 3325+00
 STA. 3330+00
 STA. 3335+00
 STA. 3340+00
 STA. 3345+00
 STA. 3350+00
 STA. 3355+00
 STA. 3360+00
 STA. 3365+00
 STA. 3370+00
 STA. 3375+00
 STA. 3380+00
 STA. 3385+00
 STA. 3390+00
 STA. 3395+00
 STA. 3400+00
 STA. 3405+00
 STA. 3410+00
 STA. 3415+00
 STA. 3420+00
 STA. 3425+00
 STA. 3430+00
 STA. 3435+00
 STA. 3440+00
 STA. 3445+00
 STA. 3450+00
 STA. 3455+00
 STA. 3460+00
 STA. 3465+00
 STA. 3470+00
 STA. 3475+00
 STA. 3480+00
 STA. 3485+00
 STA. 3490+00
 STA. 3495+00
 STA. 3500+00
 STA. 3505+00
 STA. 3510+00
 STA. 3515+00
 STA. 3520+00
 STA. 3525+00
 STA. 3530+00
 STA. 3535+00
 STA. 3540+00
 STA. 3545+00
 STA. 3550+00
 STA. 3555+00
 STA. 3560+00
 STA. 3565+00
 STA. 3570+00
 STA. 3575+00
 STA. 3580+00
 STA. 3585+00
 STA. 3590+00
 STA. 3595+00
 STA. 3600+00
 STA. 3605+00
 STA. 3610+00
 STA. 3615+00
 STA. 3620+00
 STA. 3625+00
 STA. 3630+00
 STA. 3635+00
 STA. 3640+00
 STA. 3645+00
 STA. 3650+00
 STA. 3655+00
 STA. 3660+00
 STA. 3665+00
 STA. 3670+00
 STA. 3675+00
 STA. 3680+00
 STA. 3685+00
 STA. 3690+00
 STA. 3695+00
 STA. 3700+00
 STA. 3705+00
 STA. 3710+00
 STA. 3715+00
 STA. 3720+00
 STA. 3725+00
 STA. 3730+00
 STA. 3735+00
 STA. 3740+00
 STA. 3745+00
 STA. 3750+00
 STA. 3755+00
 STA. 3760+00
 STA. 3765+00
 STA. 3770+00
 STA. 3775+00
 STA. 3780+00
 STA. 3785+00
 STA. 3790+00
 STA. 3795+00
 STA. 3800+00
 STA. 3805+00
 STA. 3810+00
 STA. 3815+00
 STA. 3820+00
 STA. 3825+00
 STA. 3830+00
 STA. 3835+00
 STA. 3840+00
 STA. 3845+00
 STA. 3850+00
 STA. 3855+00
 STA. 3860+00
 STA. 3865+00
 STA. 3870+00
 STA. 3875+00
 STA. 3880+00
 STA. 3885+00
 STA. 3890+00
 STA. 3895+00
 STA. 3900+00
 STA. 3905+00
 STA. 3910+00
 STA. 3915+00
 STA. 3920+00
 STA. 3925+00
 STA. 3930+00
 STA. 3935+00
 STA. 3940+00
 STA. 3945+00
 STA. 3950+00
 STA. 3955+00
 STA. 3960+00
 STA. 3965+00
 STA. 3970+00
 STA. 3975+00
 STA. 3980+00
 STA. 3985+00
 STA. 3990+00
 STA. 3995+00
 STA. 4000+00



WATER LINE EASEMENT

Curve	Δ	Ts	Es	Qs	Lt	St	Dc	Tc	Lc	Rc	MCS	SSD	
E	15°40'04"	242.79'	11.86'	04'15.00"	170.00'	113.37'	56.70'	07°10'04"	7°00'	143.36'	1145.92'	055	40
F	19°24'30"	235.64'	13.05'	07°21'00"	210.00'	140.12'	70.11'	12°03'30"	7°00'	85.45'	172.26'	818.51'	067
J	17°41'52"	308.72'	16.29'	06°30'00"	280.00'	173.45'	86.77'	04°41'52"	5°00'	93.96'	1145.92'	071	50
K	18°58'15"	235.17'	12.51'	05°21'00"	210.00'	140.12'	70.11'	11°37'15"	7°00'	83.29'	166.01'	818.51'	067
N	23°57'58"	480.46'	43.05'	02°15'00"	150.00'	100.01'	50.01'	9°27'58"	3°00'	321.59'	646.67'	1939.85'	028
O	-	-	-	-	-	-	-	65°45'00"	2°25'10.61"	161.88'	286.99'	250.00'	30

SEE ALIGNMENT SHEET FOR CURVE DATA



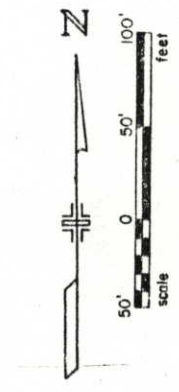
SEE ALIGNMENT SHEET FOR CURVE DATA

CURVE	Δ	Ts	Es	Ls	LT	St	Δc	Dc	Tc	Lc	Rc	MDS	SSD
G	19°49'15"	235.17'	12.51'	07°21'00"	210.00'	140.12'	70.11'	11°58'15"	7°30'	53.29'	819.51'	0.05'	300
H	17°41'52"	308.72'	16.29'	06°30'00"	260.00'	173.45'	86.72'	14°41'30"	5°00'	47.00'	1445.92'	0.071	450
L	19°24'30"	238.55'	13.05'	07°21'00"	200.00'	140.12'	70.11'	12°30'30"	7°00'	56.45'	318.51'	0.057	300
M	15°42'04"	242.79'	11.86'	04°15'00"	190.00'	113.37'	56.70'	07°10'04"	5°00'	71.77'	1145.92'	0.055	300
R	22°23'01"	301.68'	23.05'	10°45'00"	150.00'	100.00'	50.00'	68°45'00"	2°55'05"	161.58'	250.00'	0.040	200
S	22°23'01"	301.68'	23.05'	10°45'00"	150.00'	100.00'	50.00'	14°32'01"	5°00'	149.88'	1145.92'	0.055	300

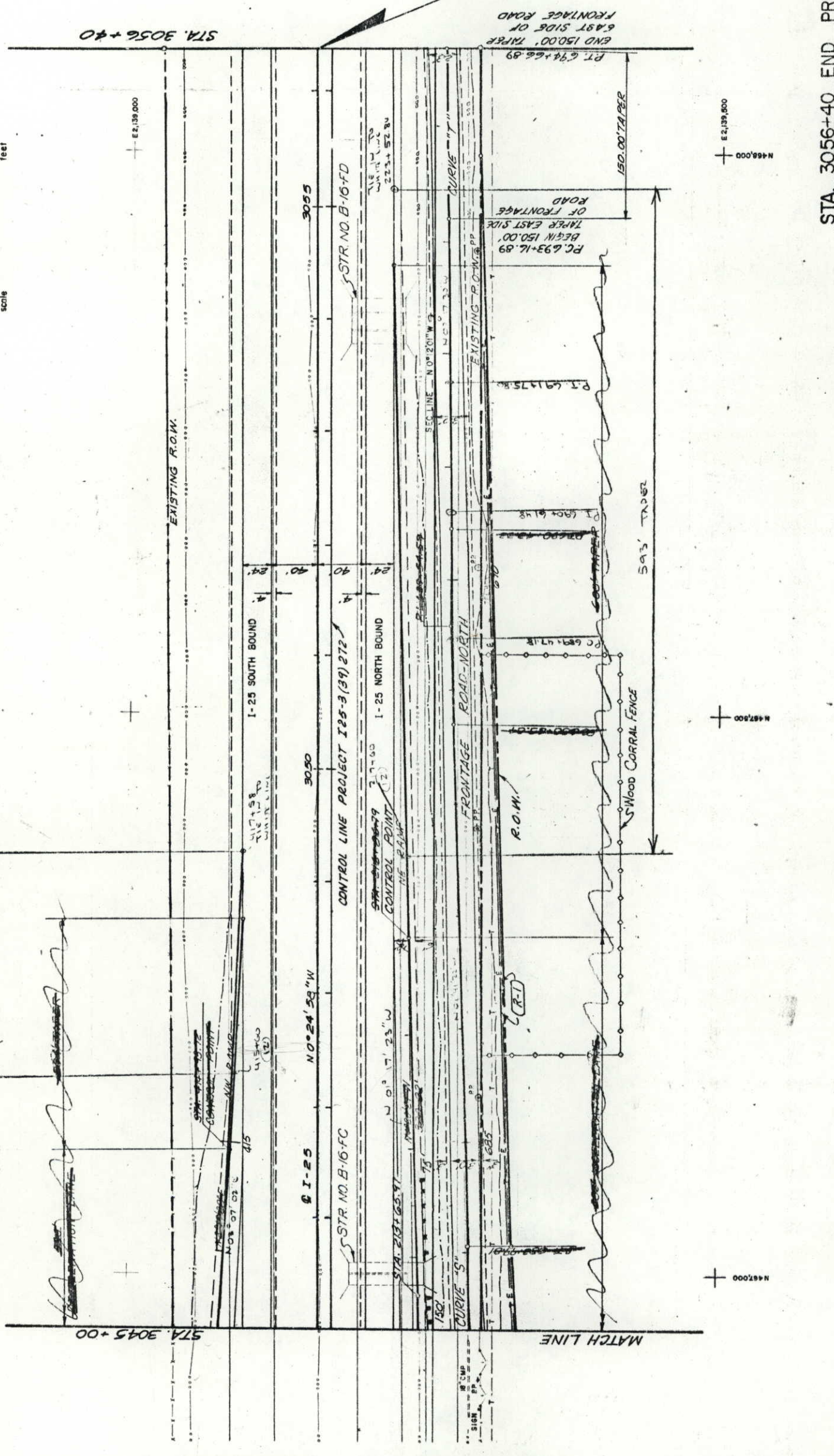
SEC. 34, T.8N., R.68W.

P.I. 510+33.58

LARIMER COUNTY MAPPING MONUMENT
 SEC. LINE 589°51'00"E
 2 PVC ABANDONED
 SEC. LINE 589°51'00"E
 COLORADO DEPT. OF HIGHWAYS BENCHMARK
 COUNTY ROAD 50
 SEC. LINE 589°49'23"E
 FRONTAGE ROAD



SEC. 33, T.8N., R.68 W.



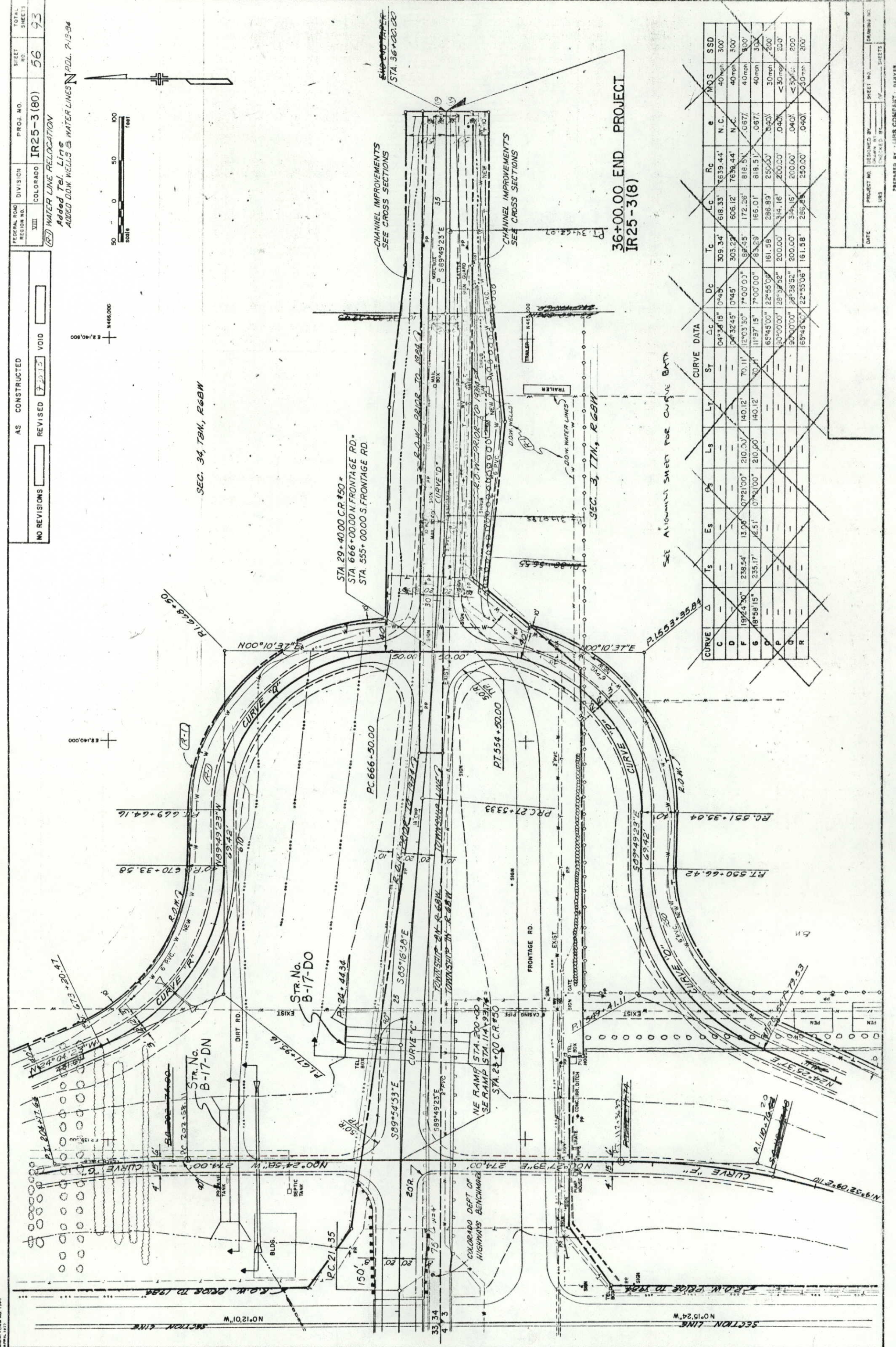
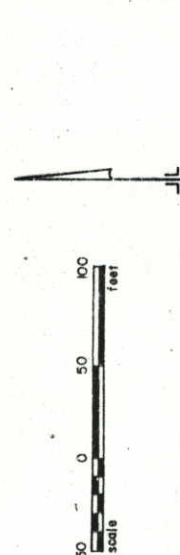
STA. 3056+40 END PROJECT
IR25-3(80)

SEE ALIGNMENT SHEET FOR CURVE DATA

SEC. 34, T.8N., R.68 W.

Curve	Δ	I _s	E _s	E _s	Δ _s	L _s	L _t	L _c	L _c	D _c	R _c	e	MDS	SSD
"S"	22°23'01"	30'88"	23'05"	03'45"	50.00'	100.02'	100.02'	50.02'	149.66'	149.66'	1145.92'	.036'	50'	450'
"T"					0°55'15"	100°30'	88.74'	177.48'	88.74'	177.48'				

Added Tel. Line
 ADDED DOW WELLS & WATER LINES
 N.D.L. 7-13-94



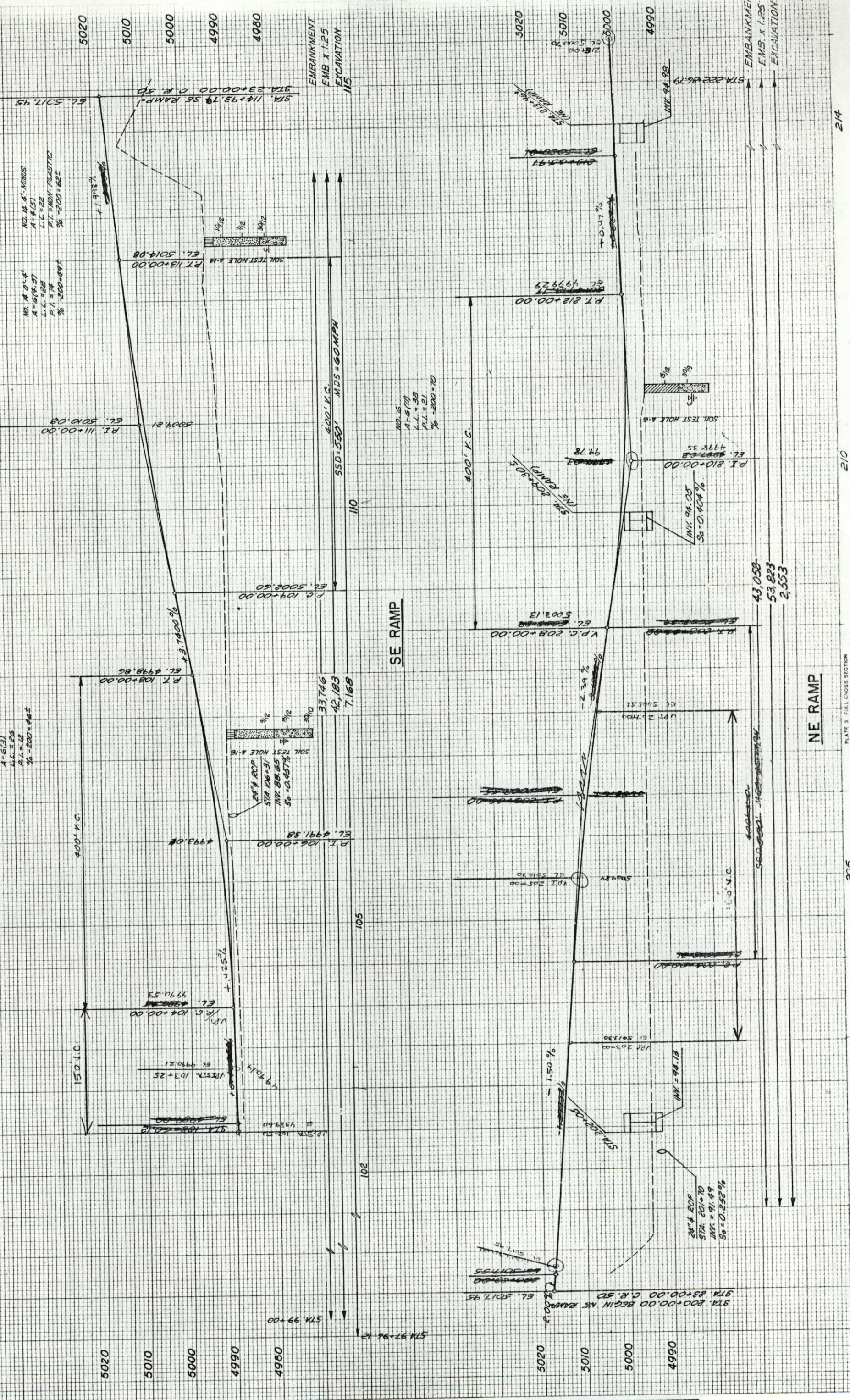
36+00.00 END PROJECT
 IR25-3(8)

SEE ALIGNMENT SHEET FOR CURVE DATA

CURVE	Δ	Ts	Es	Es	Ps	Ls	Lt	St	Δc	Dc	Tc	Rc	e	MDS	SSD
C	—	—	—	—	—	—	—	—	04°38'15"	0+43'	309.34'	618.33'	7639.44'	N.C.	300'
D	—	—	—	—	—	—	—	—	04°32'45"	0+45'	303.27'	606.12'	7638.44'	N.C.	300'
F	19°24'30"	238.54'	13.06'	07°21'00"	210.00'	210.00'	140.12'	70.11'	12°03'30"	7+00' 0.00"	88'45"	172.28'	818.51'	0.67%	40 mph
G	18°58'15"	235.17'	6.51'	07°21'00"	210.00'	210.00'	140.12'	70.11'	11°57'15"	7+00' 0.00"	88'45"	166.01'	818.51'	0.67%	40 mph
P	—	—	—	—	—	—	—	—	65°45'00"	22°55'52"	161.58'	286.89'	250.00'	0.40%	30 mph
Q	—	—	—	—	—	—	—	—	30°00'00"	28°37'52"	200.00'	314.16'	200.00'	0.40%	200'
R	—	—	—	—	—	—	—	—	30°00'00"	28°38'52"	200.00'	314.15'	200.00'	0.40%	200'
R	—	—	—	—	—	—	—	—	65°45'00"	22°55'06"	161.58'	286.89'	250.00'	0.40%	30 mph

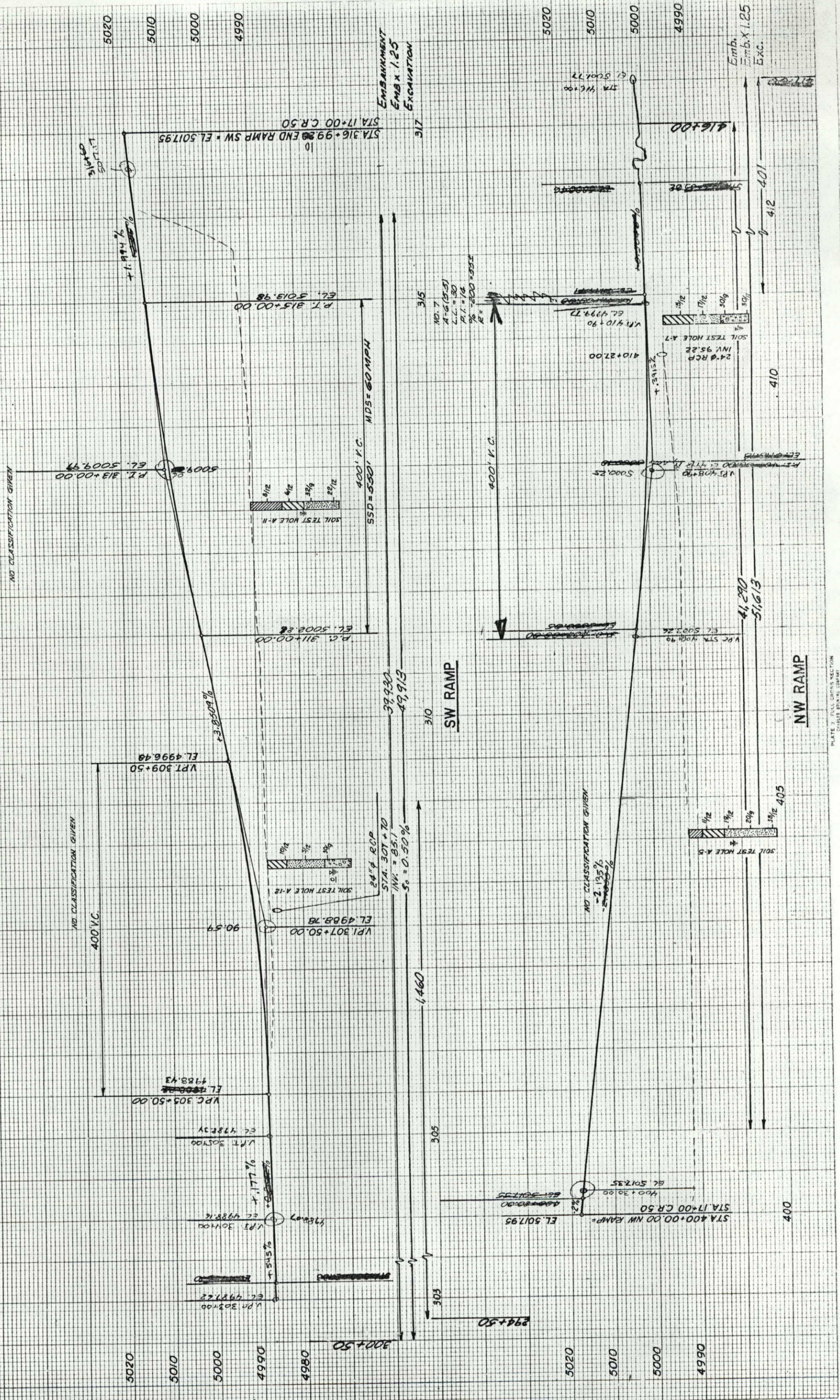
AS CONSTRUCTED
NO REVISIONS
REVISED 9-20-35 VOID

NO.	DATE	BY	REVISION



NO.	DATE	BY	REVISION

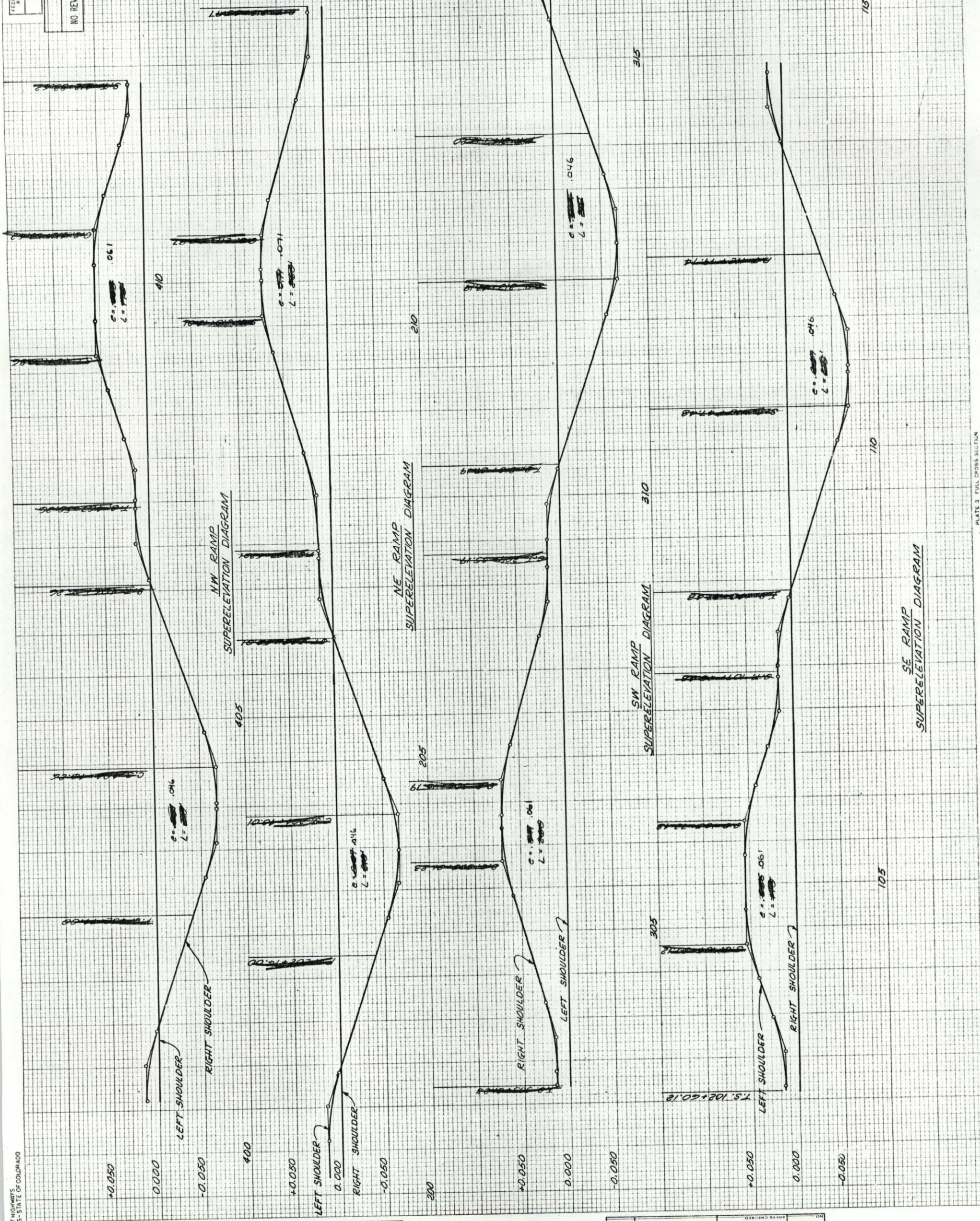
AS CONSTRUCTED
NO REVISIONS
REVISED 7-3-75
VOID



NO.	DATE	BY

NO.	DATE	BY

NO REVISIONS
AS CONSTRUCTED
REVISED 7/20/85
VOID 9/1/85



NO.	DATE	BY	REVISIONS

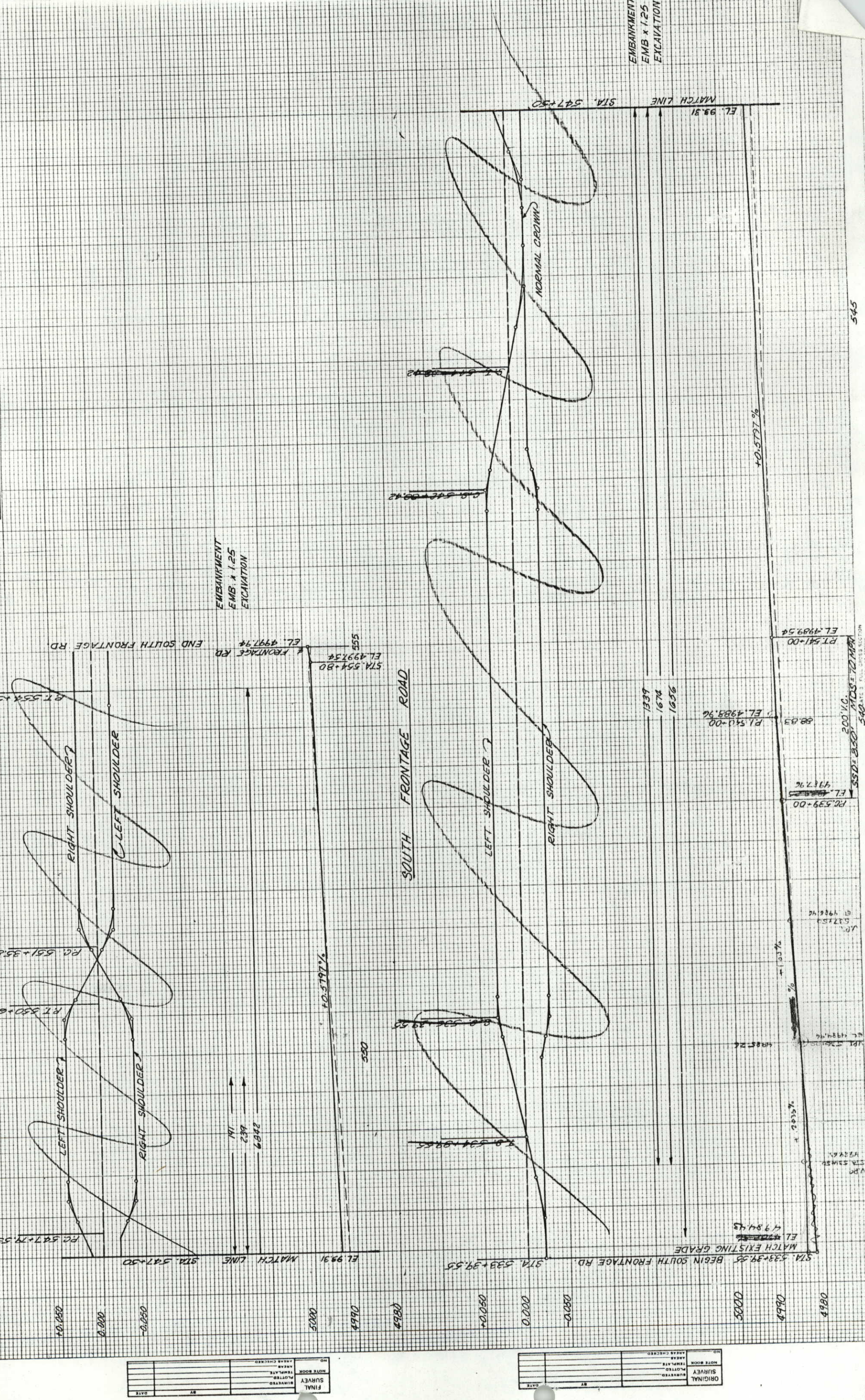
NO.	DATE	BY	REVISIONS

NO.	DATE	BY

NO.	DATE	BY

AS CONSTRUCTED
NO REVISIONS
REVISID 7-30-75 VOID

FEDERAL ROAD DISTRICT NO. VIII
DIVISION COLORADO
PROJECT NO. IR 25-3(80)
SHEET NO. 60
TOTAL SHEETS 93

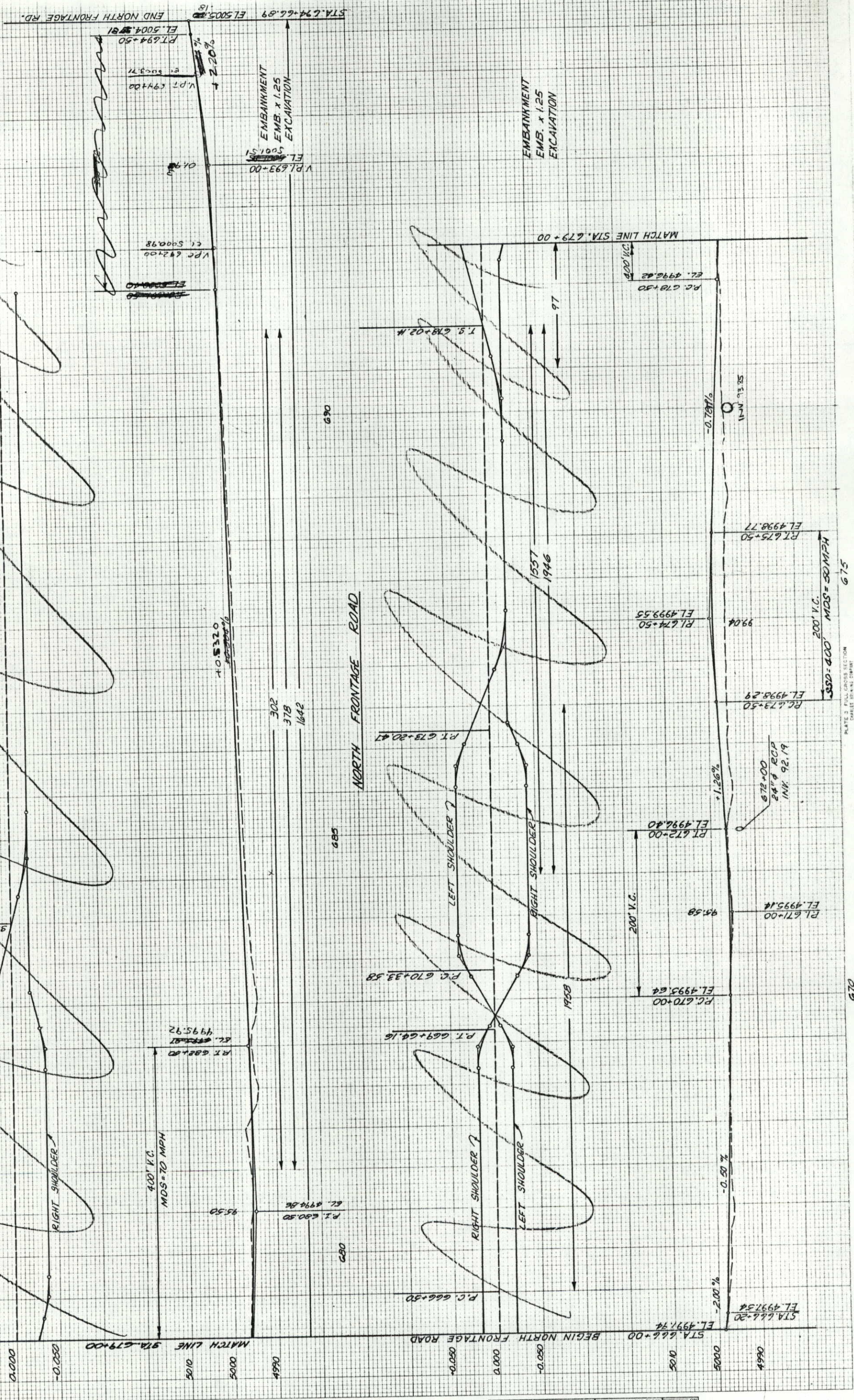


545

535

200' V.G.
550' B.S.D.
540' A.C. 3
FALL 2003 SECTION
MDS-E-TOTHER
CHECKED BY: [Signature]

NO REVISIONS AS CONSTRUCTED
 REVISIONS VOID



NO.	DATE	BY

NO.	DATE	BY

NO.	DATE	BY

NO.	DATE	BY

NO.	DATE	BY

NO.	DATE	BY

NO.	DATE	BY

NO.	DATE	BY

NO.	DATE	BY

NO.	DATE	BY

NO.	DATE	BY

NO.	DATE	BY

NO.	DATE	BY

NO.	DATE	BY

NO.	DATE	BY

NO.	DATE	BY

NO.	DATE	BY

NO.	DATE	BY

NO.	DATE	BY