

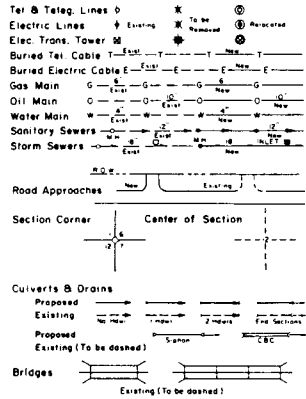
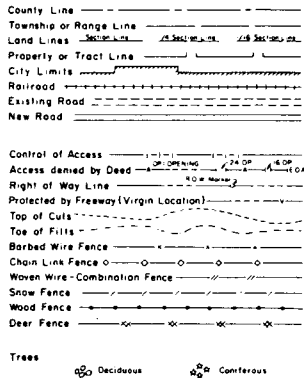
STATE DEPARTMENT OF HIGHWAYS

DIVISION OF HIGHWAYS—STATE OF COLORADO

FEDERAL ROAD REGION NO.	DIVISION	PROJECT NO.	SHEET NO.
XIII	COLORADO	IR 70-5(43)	1

RIGHT OF WAY BURLINGTON REST AREA	REVISIONS
	1-22-87 Revised End R.O.W. Sta. 6 added Basis of Bearing
	D-1

CONVENTIONAL SIGNS



RIGHT OF WAY PLAN OF PROPOSED FEDERAL AID PROJECT NO. IR 70-5(43) STATE HIGHWAY NO. 70 KIT CARSON COUNTY

RIGHT OF WAY

SCALE OF ORIGINAL DRAWINGS
PLAN SHEETS 1" = 50'
DETAIL SHEETS 1" = 50'
OWNERSHIP MAPS 1" = 200'

R.O.W. LENGTH OF PROJECT = 2,344.7 FT. = 0.44 MI.

FILE COPY - DO NOT
REMOVE FROM OFFICE

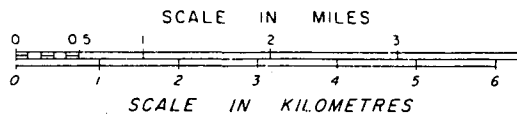
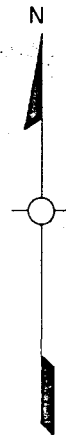
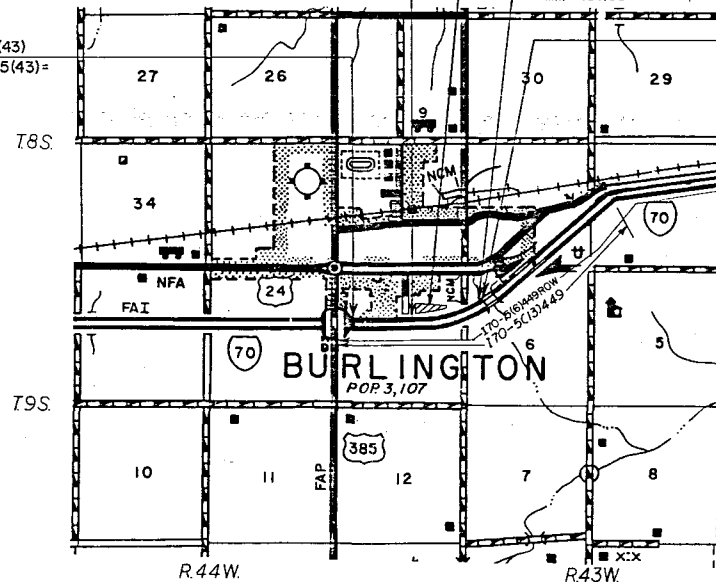
INDEX OF SHEETS	
SHEET NO.	TITLE
1	TITLE SHEET
2	TABULATION SHEET
3-6	DETAIL PLAN SHEETS
7	PROFILE SHEET
8	PRELIMINARY OWNERSHIP MAP

BEGIN CONST. ON IR 70-5(43)
STA. 730+00.0 ON IR 70-5(43)=
STA. 730+00.0 ON I 70-5(13)=
M.P.= 436.98

BEGIN R.O.W. ON IR 70-5(43)
STA. 754+00.0 ON IR 70-5(43)=
STA. 754+00.0 ON I 70-5(6)=
M.P.= 437.43

REST AREA LOCATION
END CONST. ON IR 70-5(43)
STA. 775+00.0 ON IR 70-5(43)=
STA. 775+00.0 ON I 70-5(13)=
M.P.= 437.83

END R.O.W. ON IR 70-5(43)
STA. 777+359 ON IR 70-5(43)=
STA. 777+359 ON I 70-5(6)=
M.P.= 437.87



NOTE: Centerline (stationing and bearings) shown on this R.O.W. plan is from project I 70-5(6)449 unless otherwise noted.

DIVISION OF HIGHWAYS

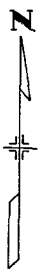
APPROVED: *P.R. McLaughlin* 9/16/86
DISTRICT ENGINEER DATE

DEPARTMENT OF TRANSPORTATION
FEDERAL HIGHWAY ADMINISTRATION

APPROVED: *Fred Wacker* 9-6-89 DATE
Ronald Franz
FOA DIVISION ADMINISTRATOR

FEDERAL ROAD REGION NO.	DIVISION	PROJ. NO.	SHEET NO.	TOTAL SHEETS
311	COLORADO	IR 70-5(43)	3	8

RIGHT OF WAY BURLINGTON REST AREA		REVISIONS



SCALE 1" = 50'

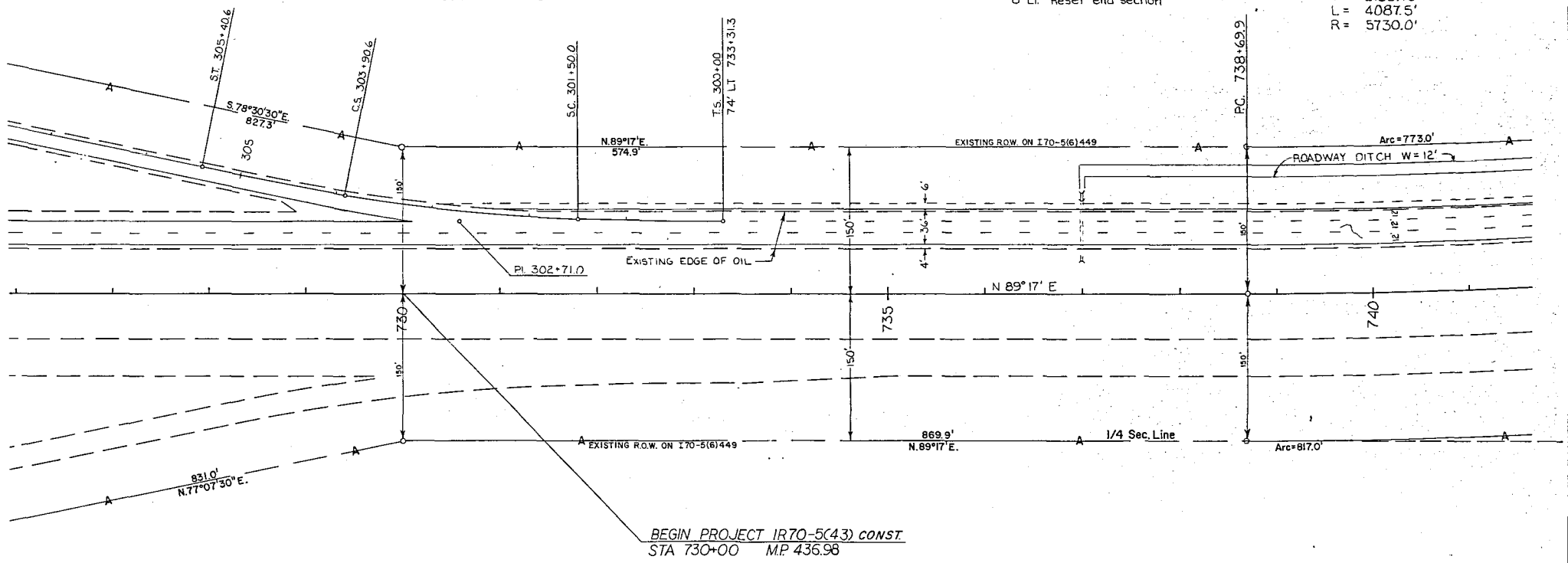
$\Delta = 11^\circ 43'$
 $T_s = 271'$
 $\Delta c = 7' 13''$
 $D_c = 3' 00''$
 $T_c = 120.4'$
 $L_c = 240.6'$
 $R_c = 310.0'$
 $e = 0.054\%$

$\theta_s = 2^\circ 15'$
 $L_s = 150'$
 $L.T. = 160'$
 $S.T. = 50'$

NW1/4 Sec.1
T.9S., R.44W.

737+00 ~ Req'd extend 24" CMP
8" Lt. Reset end section

$\Delta = 40^\circ 52' 30''$ LT.
 $D = 1^\circ 00'$
 $T = 2135.15'$
 $L = 4087.5'$
 $R = 5730.0'$



BEGIN PROJECT IR70-5(43) CONST
STA 730+00 M.P. 436.98

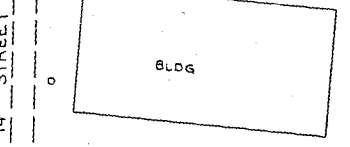
SW1/4 Sec.1
T.9S., R.44W.

NO.	COLORADO	IR 70-5(43)	REVISIONS	D-1
3-3-86	Revise R.O.W. Tie			D-1
1-22-87	Added E.O.A.			D-1

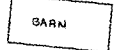
SCALE 1"=50'

NW1/4 Sec.1
T.9S., R.44W.

NE1/4 Sec.1
T.9S. R.44W.



OLD TOWN



BEGIN R.O.W. ON IR 70-5(43)
 STA. 754+00.0 ON IR 70-5(43)=
 STA. 754+00.0 ON I70-5(6)=
 M.P.=437.43

750+25 ~ REQUIRED MEDIAN CROSSOVER
 20' WIDE, 25' RADII

750+00 ~ REQUIRED EXTEND 24"
 CMP 10' LT. RESET END SECTION

45' Utility Easement

Arc=2959.2'

SEWER M.H. # 392

SEWER M.H. # 388



PC 400+62.57
 PC 500+62.57

45' UNLESS

5500'S W
 187.2

EXISTING R.O.W. ON I70-5(6)

Arc=773.0'

ROADWAY DITCH W=12'

CONTINUOUS ACCELERATION-DECELERATION LANE

EXISTING EDGE OF ASPHALT

EXISTING DIKE

746+80.7

745

750

STA 500+00 = STA 400+00
 BEGIN ALL OFFSET 86'
 FROM STA 753+28.84
 ON IR 70-5(13)
 449' OFFSET
 ON IR 70-5(43)

TSS

195.0
 755+17.5

LEDA

MH

MH

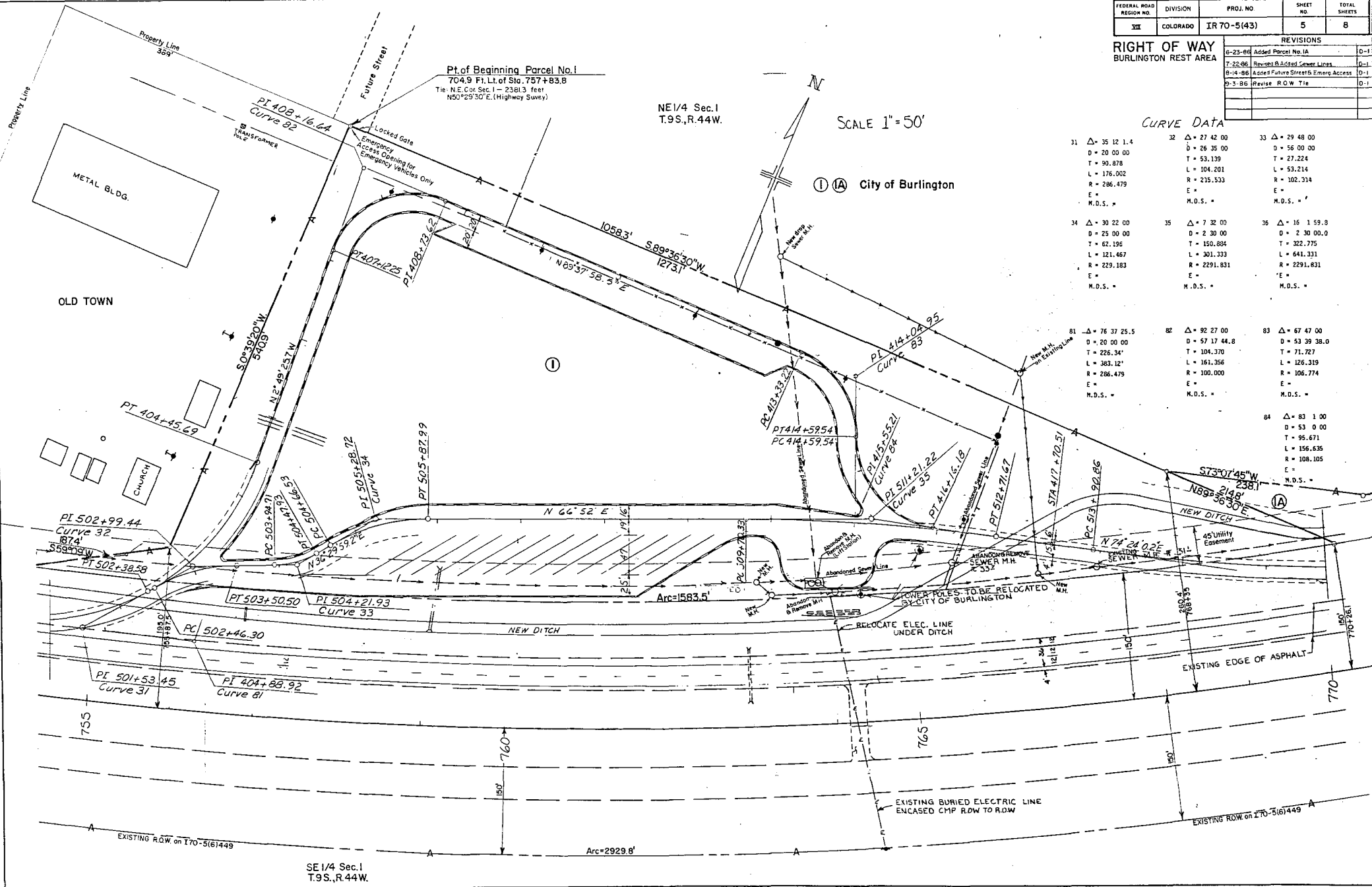


FEDERAL ROAD REGION NO.	DIVISION	PROJ. NO.	SHEET NO.	TOTAL SHEETS
VII	COLORADO	IR 70-5(43)	5	8

REVISIONS		
6-23-86	Added Parcel No. 1A	D-1
7-22-86	Revised & Added Sewer Lines	D-1
8-14-86	Added Future Streets & Emergency Access	D-1
9-3-86	Revise R.O.W. Tie	D-1

CURVE DATA

31	Δ = 35 12 1.4 D = 20 00 00 T = 90.878 L = 176.002 R = 286.479 E = M.D.S. =	32	Δ = 27 42 00 D = 26 35 00 T = 53.139 L = 104.201 R = 215.533 E = M.D.S. =	33	Δ = 29 48 00 D = 56 00 00 T = 27.224 L = 53.214 R = 102.314 E = M.D.S. =
34	Δ = 30 22 00 D = 25 00 00 T = 62.196 L = 121.467 R = 229.183 E = M.D.S. =	35	Δ = 7 32 00 D = 2 30 00 T = 150.894 L = 301.333 R = 2291.831 E = M.D.S. =	36	Δ = 16 1 59.8 D = 2 30 00.0 T = 322.775 L = 641.331 R = 2291.831 E = M.D.S. =
81	Δ = 76 37 25.5 D = 20 00 00 T = 226.34 L = 383.12 R = 286.479 E = M.D.S. =	82	Δ = 92 27 00 D = 57 17 44.8 T = 104.370 L = 161.356 R = 100.000 E = M.D.S. =	83	Δ = 67 47 00 D = 53 39 38.0 T = 71.727 L = 126.319 R = 106.774 E = M.D.S. =
		84	Δ = 83 1 00 D = 53 0 00 T = 95.671 L = 156.635 R = 108.105 E = M.D.S. =		



NE 1/4 Sec. 1
T.9S., R.44W.

SCALE 1" = 50'

City of Burlington

SE 1/4 Sec. 1
T.9S., R.44W.

EXISTING R.O.W. on I70-5(6)449

Arc=2929.8'

EXISTING R.O.W. on I70-5(6)449

FEDERAL ROAD REGION NO.	DIVISION	PROJ. NO.	SHEET NO.	TOTAL SHEETS
VII	COLORADO	IR 70-5(43)	6	8

REVISIONS				
6-27-95	Added Parcel No. 1A			D-1
1-22-87	Revised PO B. Tie to new E.O.A.			D-1

RIGHT OF WAY
BURLINGTON REST AREA

NE 1/4 Sec. 1
T. 9S. R. 44W.

SCALE 1" = 50'

NW 1/4 Sec. 6
T. 10S., R. 44W.

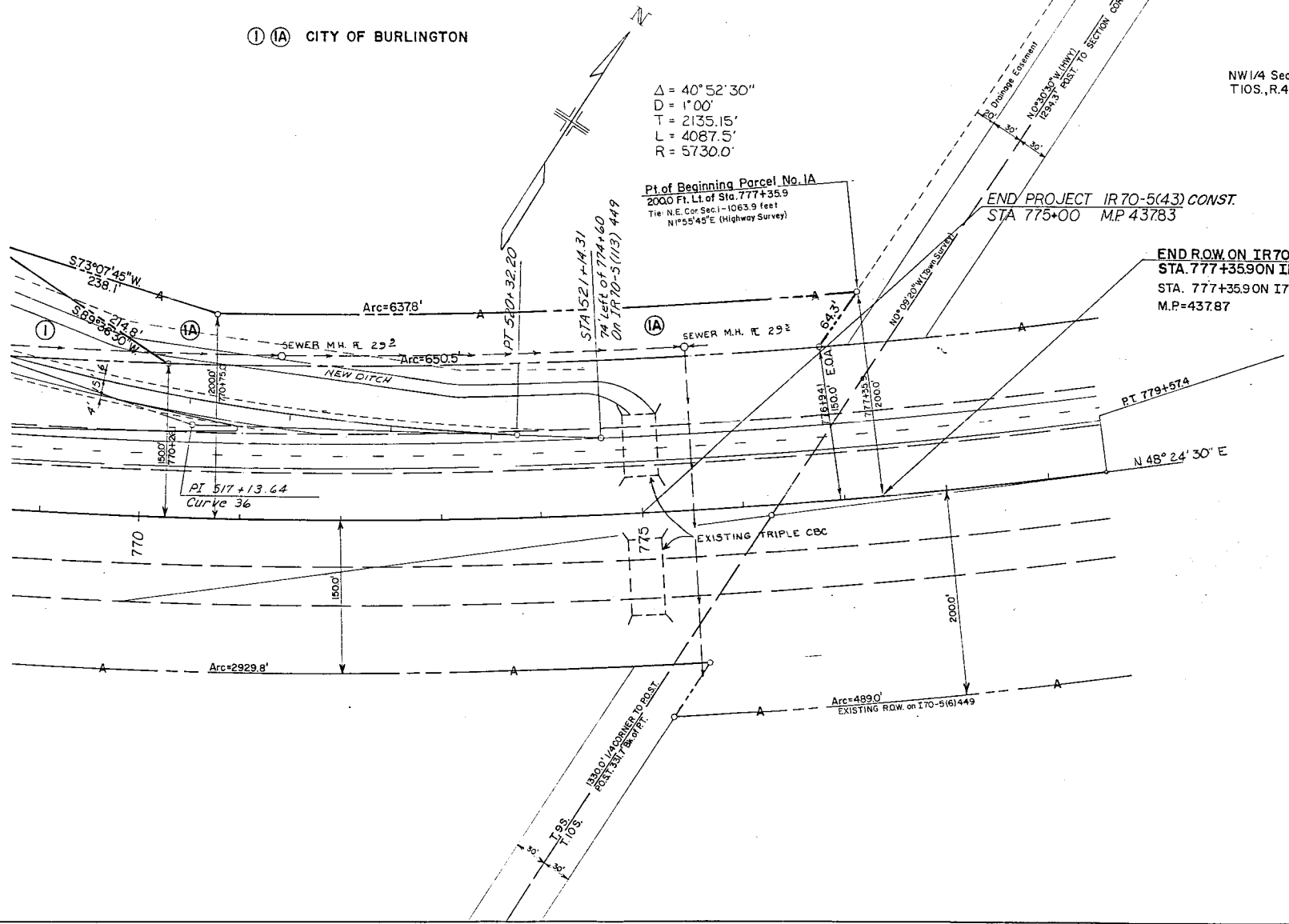
① 1A CITY OF BURLINGTON

$\Delta = 40^\circ 52' 30''$
 $D = 1' 00''$
 $T = 2135.15'$
 $L = 4087.5'$
 $R = 5730.0'$

Pt of Beginning Parcel No. 1A
 2000 Ft. Lt. of Sta. 777+35.9
 Tie N.E. Cor. Sec. 1 - 1063.9 feet
 $N 55^\circ 45' E$ (Highway Survey)

END PROJECT IR 70-5(43) CONST.
 STA 775+00 MP 43783

END ROW ON IR 70-5(43)
 STA. 777+35.9 ON IR 70-5(43) =
 STA. 777+35.9 ON I 70-5(6) =
 M.P. = 43787



PROFILE SHEET

FEDERAL ROAD REGION NO.	DIVISION	PROJ NO	SHEET NO	TOTAL SHEETS
III	COLORADO	IR70-5(43)	7	8

RIGHT OF WAY BURLINGTON REST AREA		REVISIONS

