

# DEPARTMENT OF HIGHWAYS STATE OF COLORADO

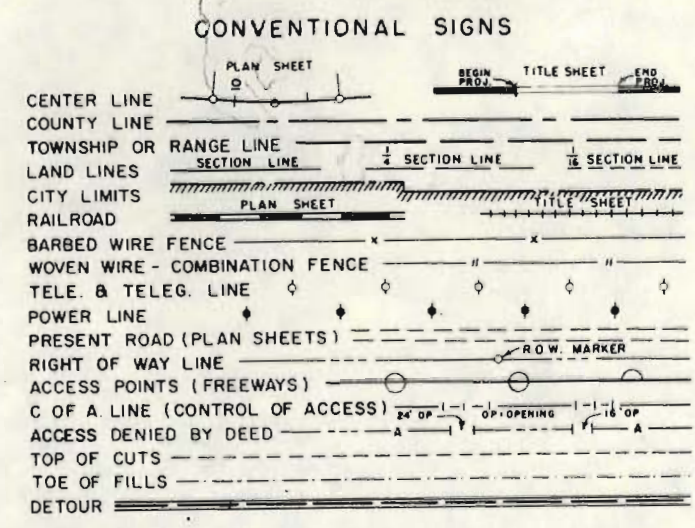
FEDERAL ROAD REGION NO.	DIVISION	PROJECT NO.	SHEET NO.
9	COLORADO	I 25-1(44)3	1

RIGHT OF WAY WOOTTON-STARKVILLE

SHEET NO.

INDEX OF SHEETS

1	TITLE SHEET
2-2A	TABULATION OF PROPERTIES
3-15	PLAN & PROFILE SHEETS
16-18	OWNERSHIP MAPS



## PLAN AND PROFILE OF PROPOSED FEDERAL AID PROJECT NO. I 25-1(44)3 STATE HIGHWAY NO. 1 25 LAS ANIMAS COUNTY RIGHT OF WAY INFORMATION OBTAINED FROM AVAILABLE COUNTY RECORDS

SCALES OF ORIGINAL DRAWINGS

ON PLAN, 1 IN. = 100 FT.  
 ON PROFILE, 1 IN. = 100 FT. HORIZONTAL  
 1 IN. = 10 FT. VERTICAL

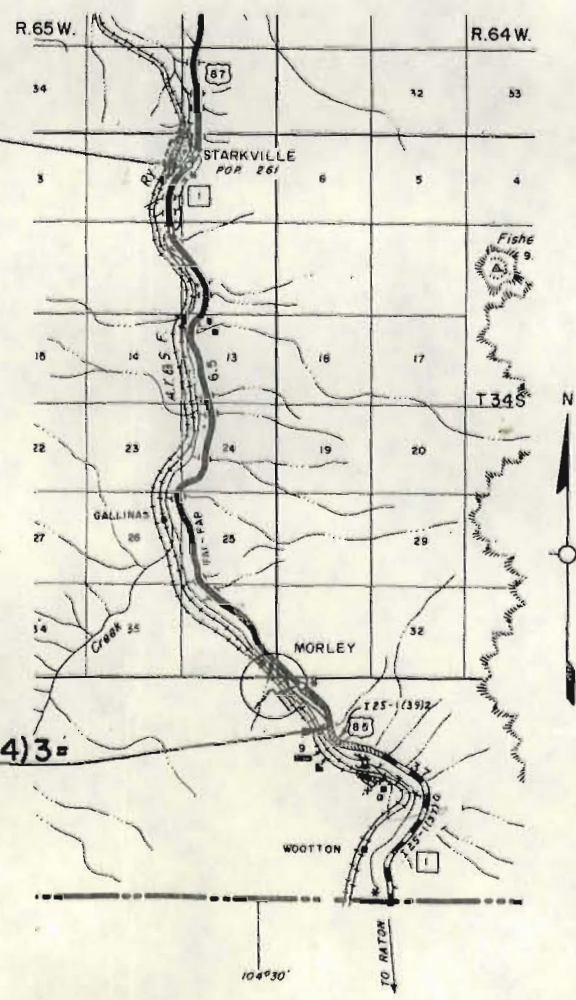
GRADE LINE ON PROFILE IS SHOWN AS GRADE OF FINISHED ROAD  
 LENGTH OF PROJECT (R.O.W.) 7.244 MILES

REVISIONS

DATE	DESCRIPTION	BY
1-27-66	Added Length of R.O.W.	FCM
3-8-66	Rev. Index & End Sta.	FCM

DO NOT REMOVE  
 FILE COPY

STA. 521 + 21.0 END R.O.W. I 25-1(44)



STA. 141 + 74.3 BEG. R.O.W. I 25-1(44)3 =  
 STA. 140 + 87.0 END I 25-1(39)2

FILE COPY  
 DO NOT REMOVE

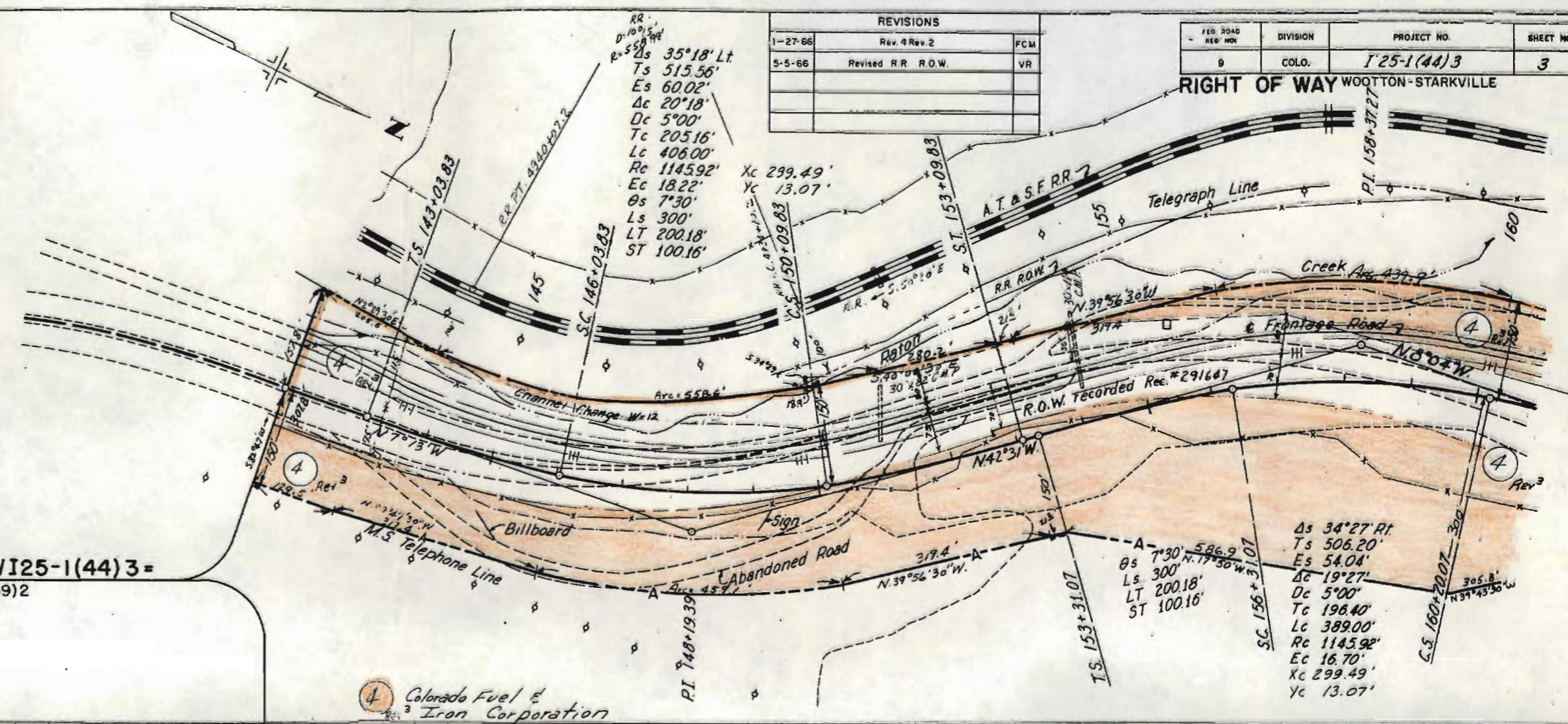




REVISIONS		
1-27-66	Rev. 1 Rev. 2	FCM
5-5-66	Revised R.R. R.O.W.	VR

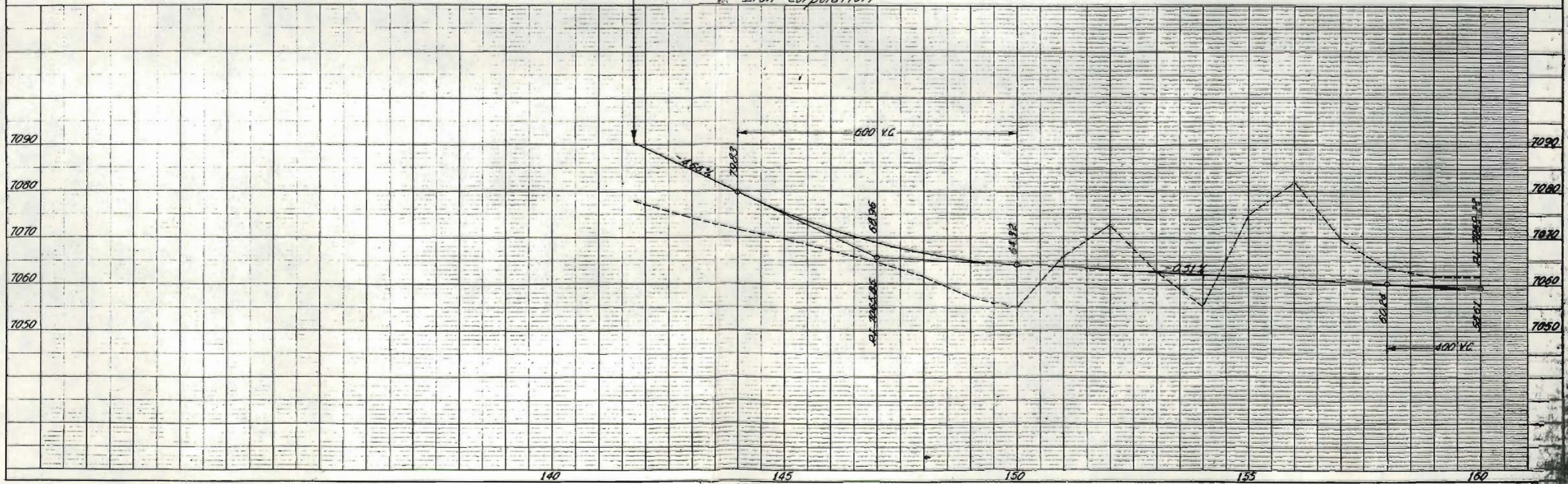
FED. ROAD DIST. NO.	DIVISION	PROJECT NO.	SHEET NO.
9	COLO.	125-1(44)3	3

RIGHT OF WAY WOOTTON-STARKVILLE



STA. 141+74.3 BEG. R.O.W. I 25-1(44)3 =  
 STA. 140+87.0 END I 25-1(39)2

Colorado Fuel & Iron Corporation

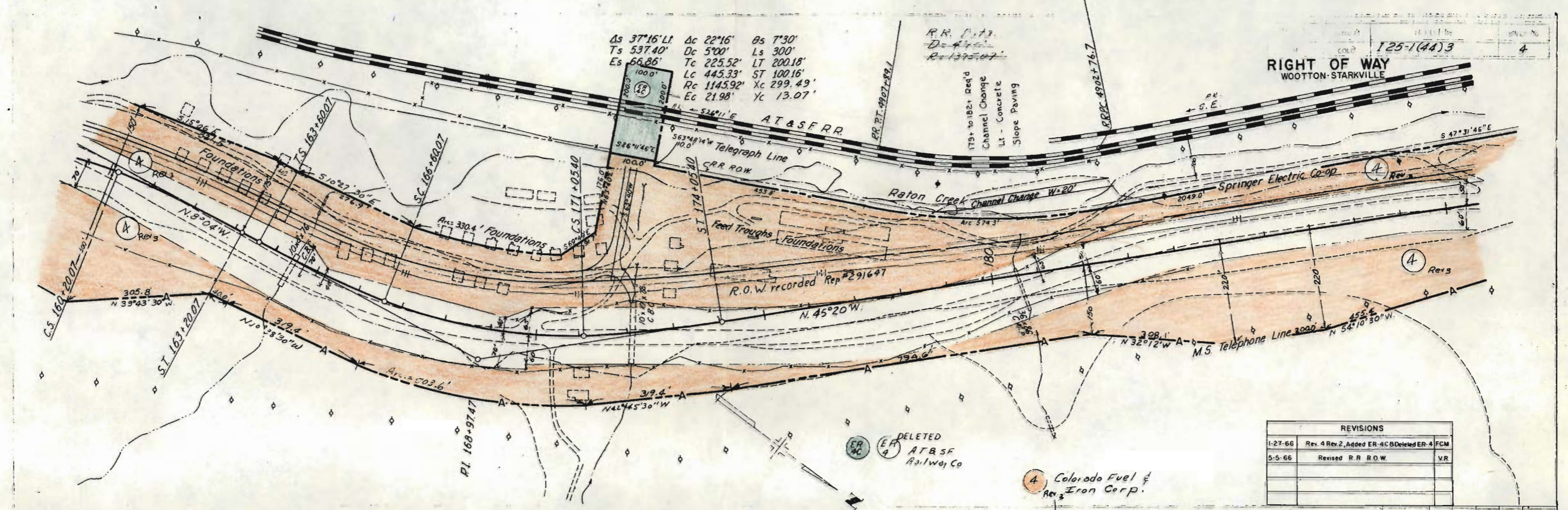


PLAN  
 NOTE: REVISIONS  
 NO.

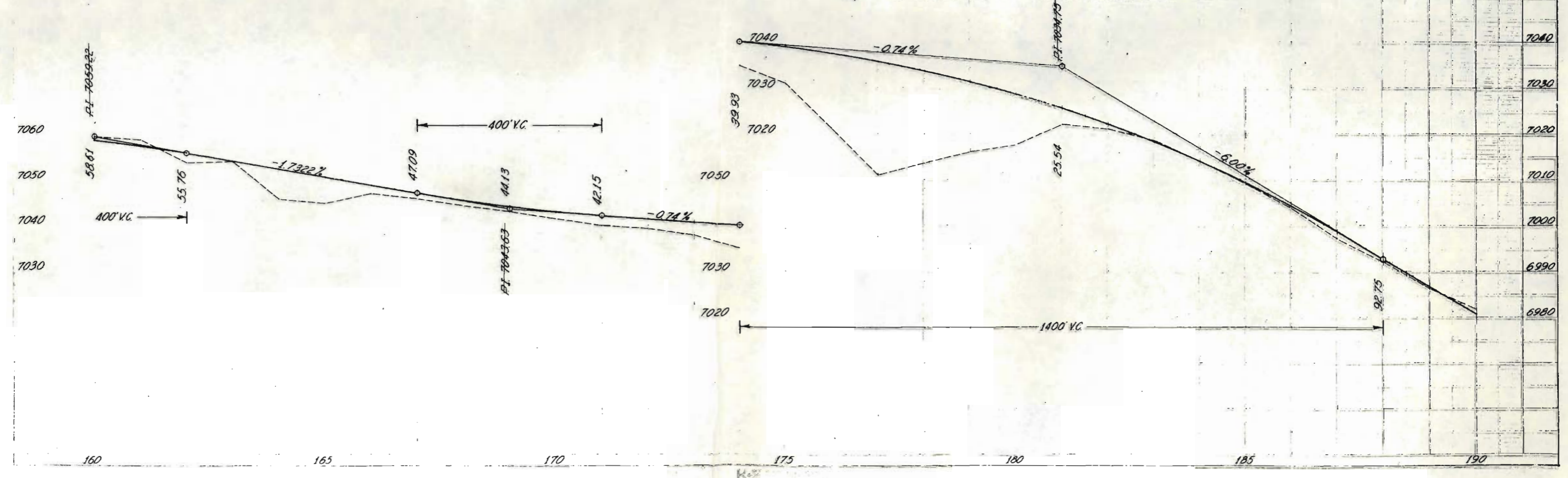
PROFILE  
 NOTE: REVISIONS  
 NO.

$\Delta s$  37'16" LI     $\Delta c$  22'16"     $\Delta s$  7'30"  
 $Ts$  537.40'     $Dc$  5'00"     $Ls$  300'  
 $Es$  66.86'     $Tc$  225.52'     $LT$  200.18'  
 $Lc$  445.33'     $ST$  100.16'  
 $Rc$  1145.92'     $Xc$  299.49'  
 $Eg$  21.98'     $Yc$  13.07'

R.R. 1, 1, 3  
 $D = 47'$   
 $R = 1375.07'$



REVISIONS		
1-27-66	Rev. 4 Rev. 2, Added ER-4C Deleted ER-4 FCM	
5-5-66	Revised R.R. R.O.W.	VR



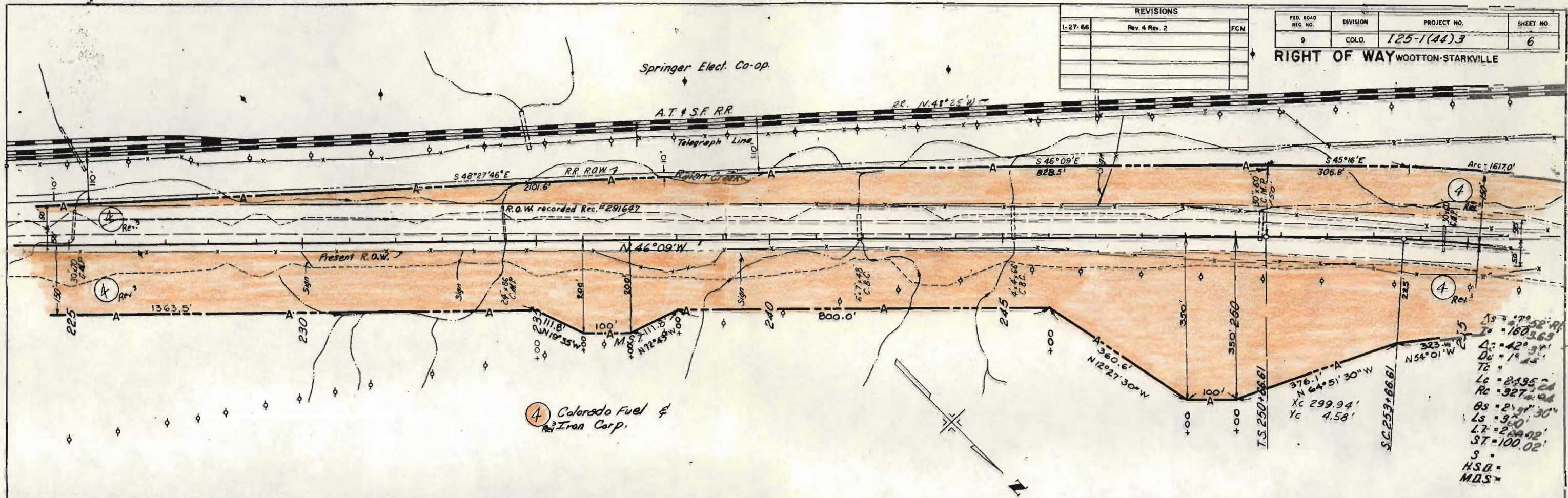


REVISIONS		
1-27-66	Rev. 4 Rev. 2	FCM

FED. ROAD REG. NO.	DIVISION	PROJECT NO.	SHEET NO.
9	COLO.	125-1(44)3	6

RIGHT OF WAY WOOTTON-STARKVILLE

PLAN	QUANTITY



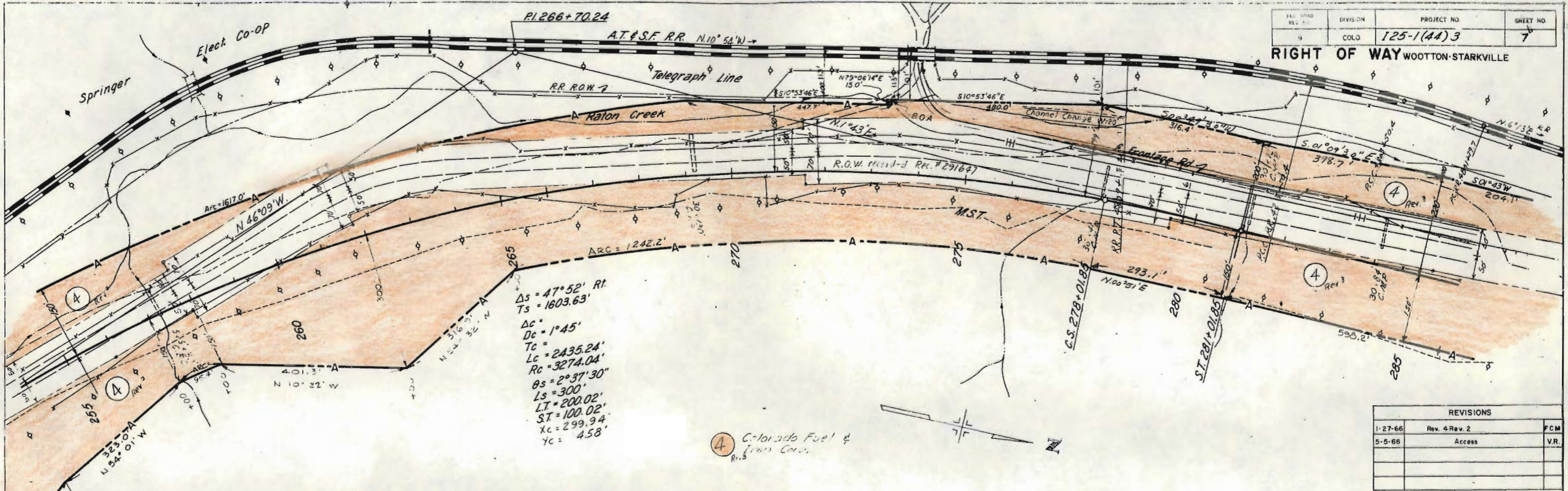
$1s = 470.52'$   
 $Ts = 180.363'$   
 $\Delta = 42.91'$   
 $Ds = 19.45'$   
 $Tc =$   
 $Lc = 2435.24'$   
 $Rc = 927.04'$   
 $Os = 257.30'$   
 $Ls = 370'$   
 $L7 = 240.42'$   
 $ST = 100.02'$   
 $S =$   
 $H.S.D. =$   
 $M.D.S. =$

PROFILE	VERTICAL CURVE



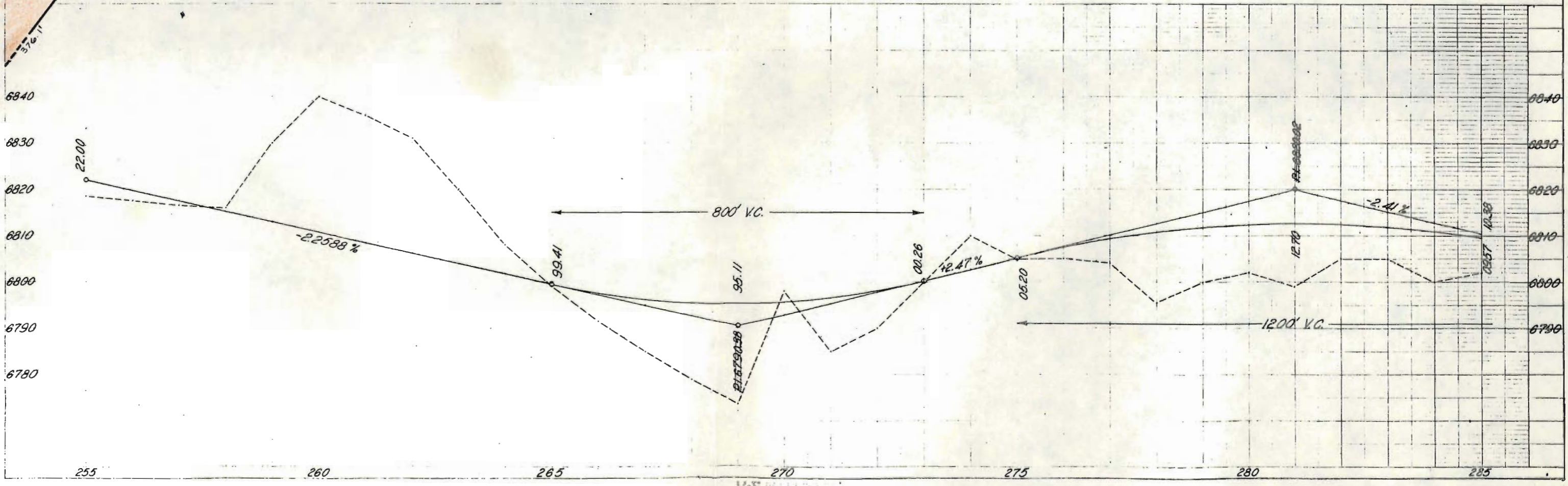
PROJECT NO.	125-1(44)3
SHEET NO.	7

RIGHT OF WAY WOOTTON-STARKVILLE

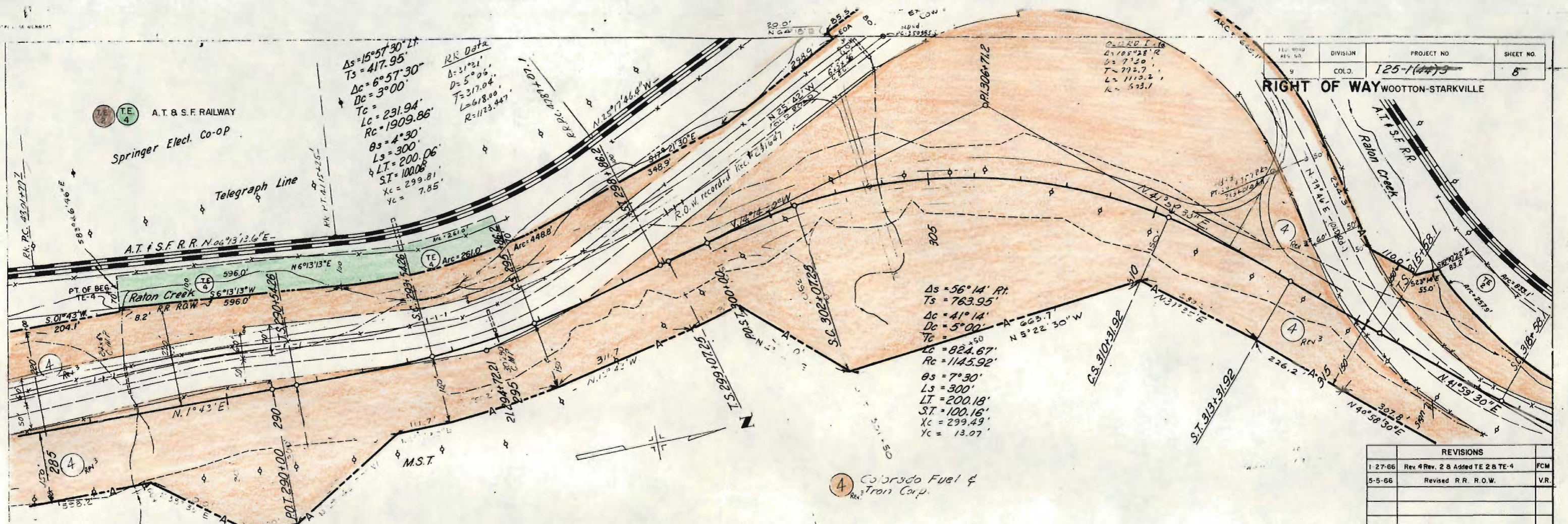


Colorado Fuel & Iron Corp.

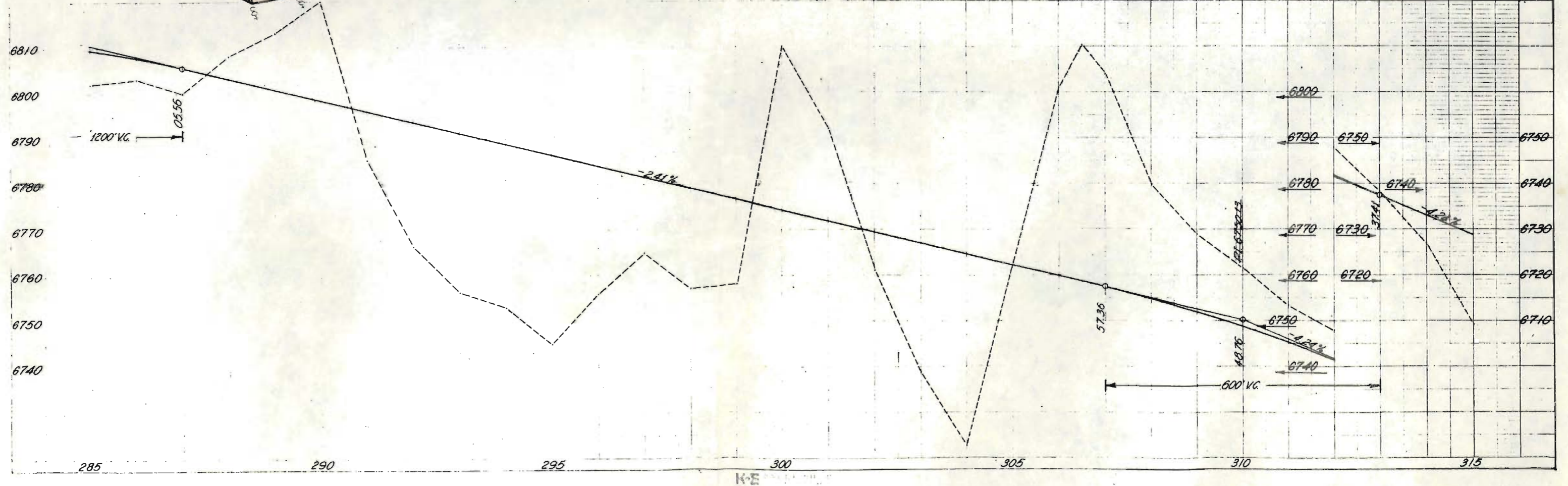
REVISIONS		
1-27-66	Rev. 4 Rev. 2	FCM
5-5-66	Access	V.R.



RIGHT OF WAY WOOTTON-STARKVILLE



REVISIONS		
1-27-66	Rev. 4 Rev. 2 & Added TE 2 & TE 4	FCM
5-5-66	Revised R.R. R.O.W.	VR



REVISIONS	
F-26-66	Rev. 4 Rev. 2; Add TE 2, Deleted ER 4, ER 4A
SMR 4E	FCM
NO-20-66	Added Railroad Arc
	VR

FILE NO.	DIVISION	PROJECT NO.	SHEET NO.
9	COLO.	F25-1(44)3	9

RIGHT OF WAY WOOTTON-STARKVILLE

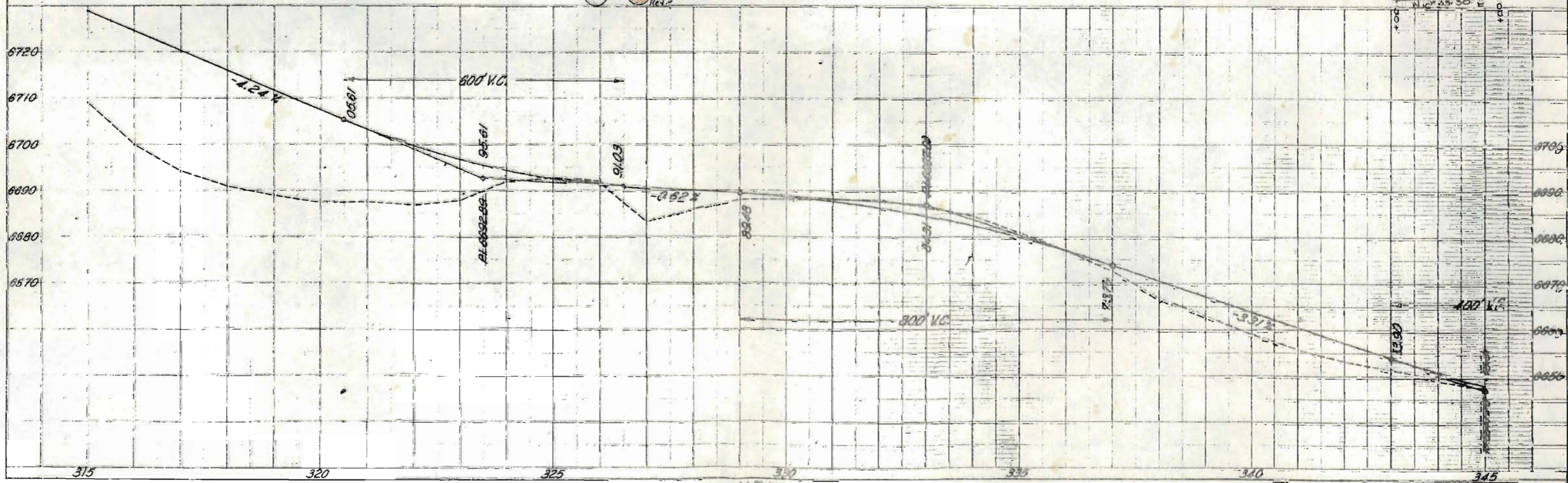
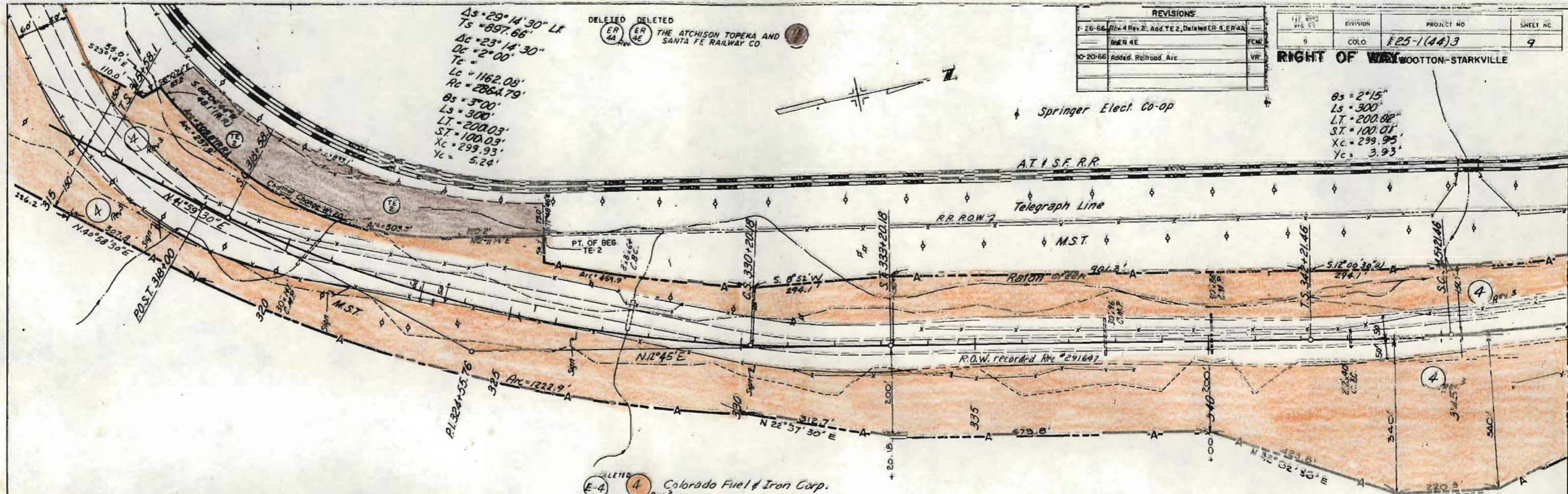
$\Delta s = 29^{\circ} 14' 30''$  LR  
 $Ts = 897.66'$   
 $Dc = 23^{\circ} 14' 30''$   
 $Dc = 2^{\circ} 00''$   
 $Tc =$   
 $Lc = 1162.08'$   
 $Rc = 2864.79'$   
 $\theta s = 3^{\circ} 00''$   
 $Ls = 300'$   
 $LT = 200.03'$   
 $ST = 100.03'$   
 $Xc = 299.93'$   
 $Yc = 5.24'$

DELETED DELETED  
 ER 4A  
 ER 4E  
 THE ATCHISON TOPEKA AND SANTA FE RAILWAY CO.

Springer Elect. Co-op

$\theta s = 2^{\circ} 15''$   
 $Ls = 300'$   
 $LT = 200.68'$   
 $ST = 100.01'$   
 $Xc = 299.95'$   
 $Yc = 3.93'$

PLAN	NO.
1	1
2	2
3	3
4	4
5	5
6	6
7	7
8	8
9	9
10	10



FED. ROAD DIST. NO.	DIVISION	PROJECT NO.	SHEET NO.
9	COLO.	125-1(44)3	10

RIGHT OF WAY WOOTTON-STARKVILLE

$\Delta s = 27^{\circ}28'30''$  Lt  
 $Ts = 1084.03'$   
 $\Delta c = 22^{\circ}58'30''$   
 $Dc = 1^{\circ}30'$   
 $Tc =$   
 $Lc = 1531.67'$   
 $Rc = 3819.72'$   
 $\theta s = 2^{\circ}15'$   
 $Ls = 300'$   
 $LT = 200.02'$   
 $ST = 100.01'$   
 $Xc = 299.95'$   
 $Yc = 3.93'$



PI. 374+17.72

Springer Elect. Co-op. M.P. 645 RR 4123+75

A.T. & S.F. RR

Telegraph Line

RR ROW 7

Raton Creek

M.S.T.

ARC = 1471.5'

EL 5108.53  
 C.S. 360+53.13

RR N 04°26' W

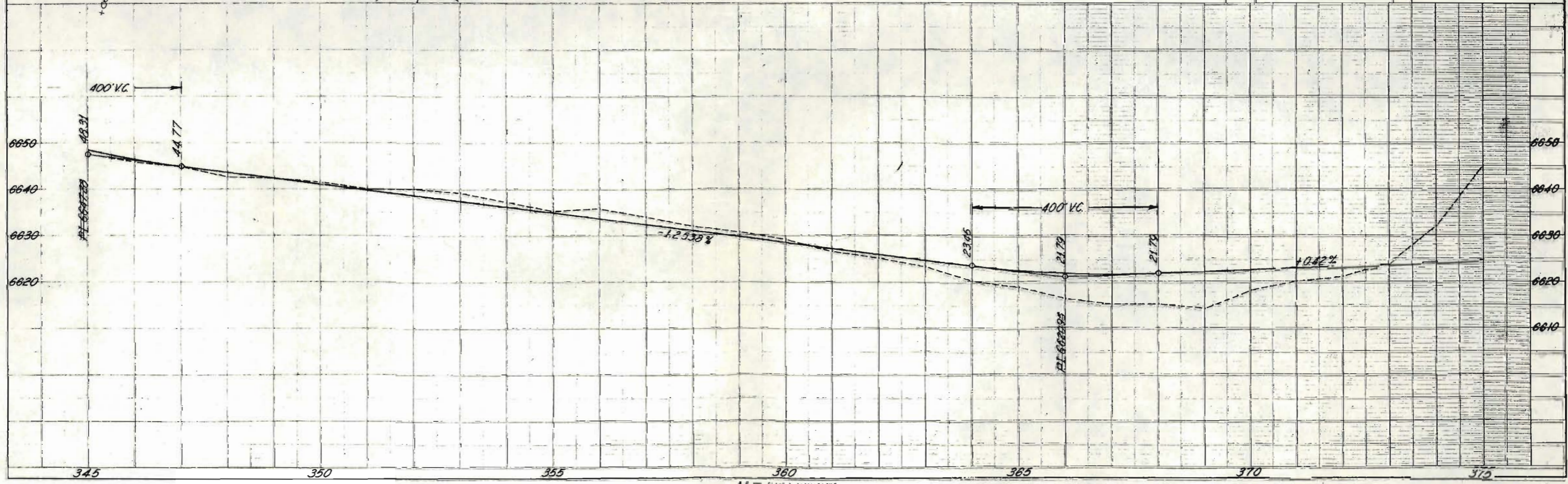
$\Delta = 10^{\circ}50'$  Rt  
 $D = 1^{\circ}00'$   
 $T = 543.29'$   
 $L = 1083.33'$   
 $R = 5729.58'$

REVISIONS		
1-27-66	Rev 4 Rev 2	FCM
5-5-66	Access	V.R.

4 Colorado Fuel & Iron Corp. Rev. 3

PLAN

PROFILE



REVISIONS		
1-27-66	Rev. 4 Rev 2 & ER 5 Rev.	FCM
5-18-66	Added R.R. Tie Parcel ER 5 Rev. 2	R.C.

FED. ROAD DIST. NO.	DIVISION	PROJECT NO.	SHEET NO.
9	COLO.	125-1(44)3	11

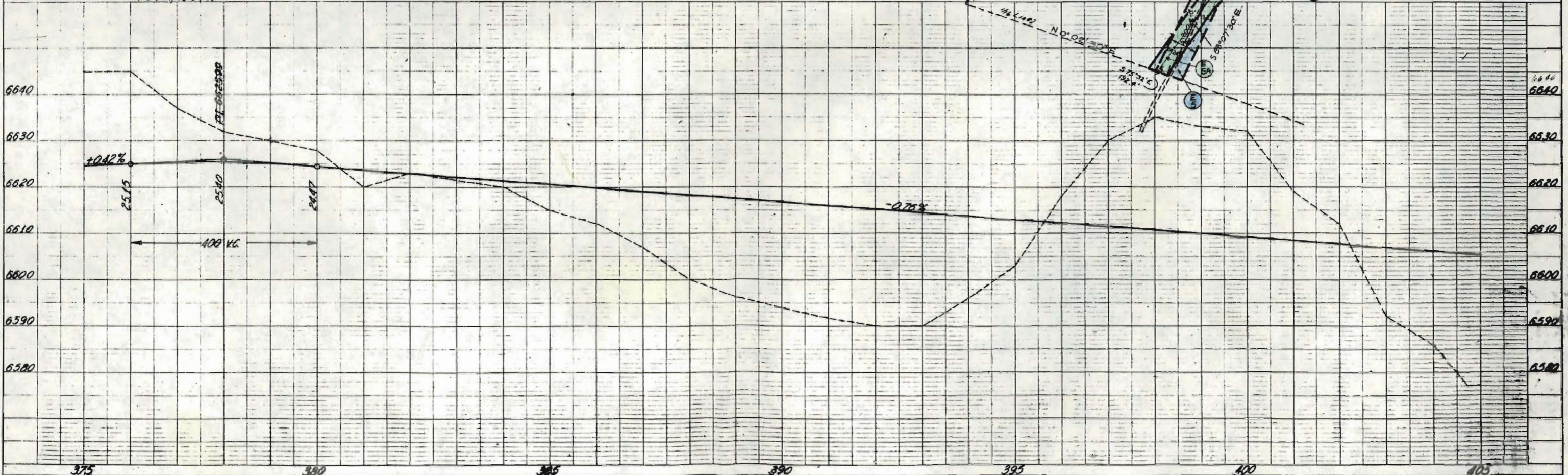
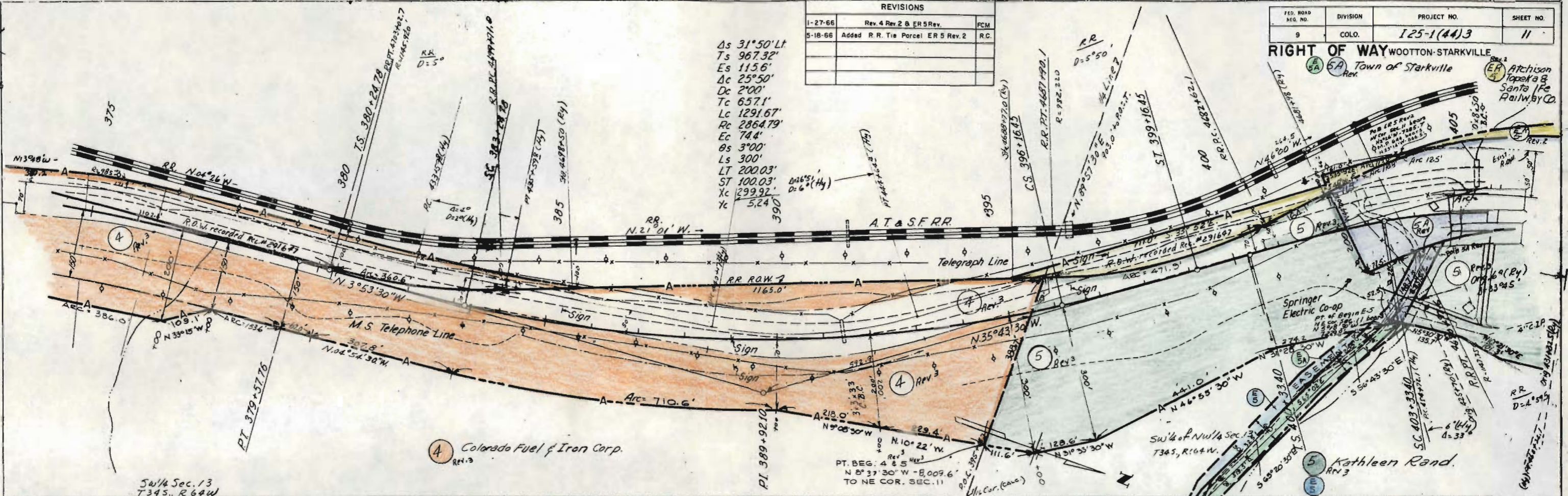
$\Delta s$  31°50' LT  
 $Ts$  967.32'  
 $Es$  115.6'  
 $\Delta c$  25°50'  
 $Dc$  2'00"  
 $Tc$  657.1'  
 $Lc$  1291.67'  
 $Rc$  2864.79'  
 $\theta s$  74.4'  
 $Ls$  300'  
 $LT$  200.03'  
 $ST$  100.03'  
 $Xc$  299.92'  
 $Yc$  5.24'

RIGHT OF WAY WOOTTON-STARKVILLE

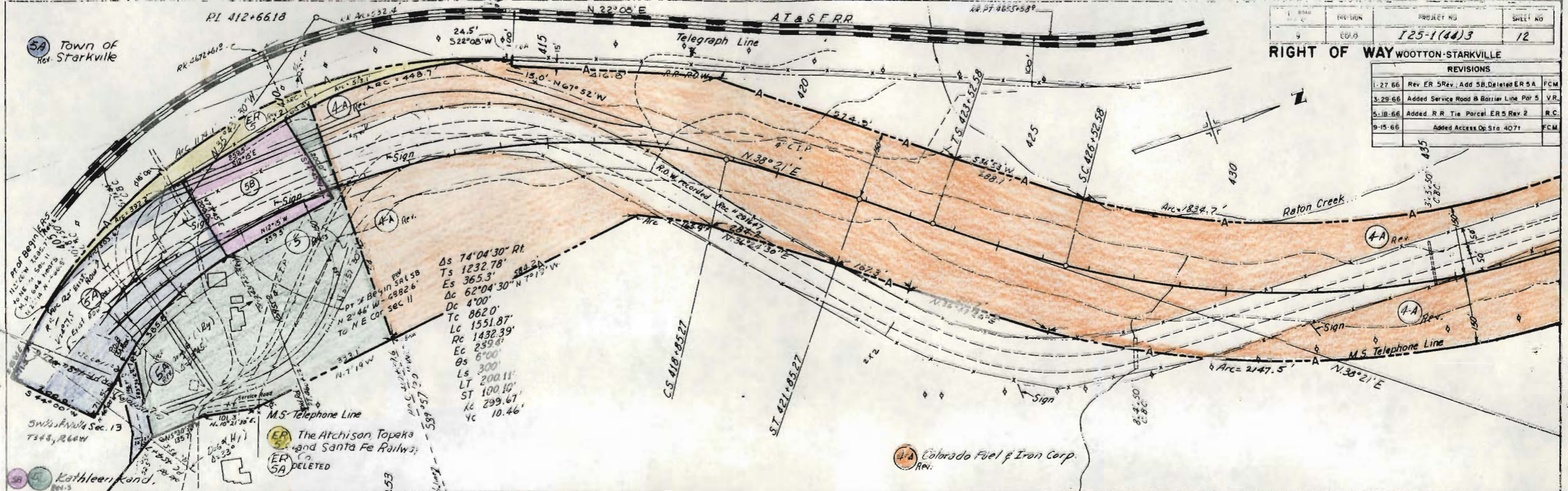
Town of Starkville

Atchison  
 Tapoka &  
 Santa Fe  
 Railway Co.

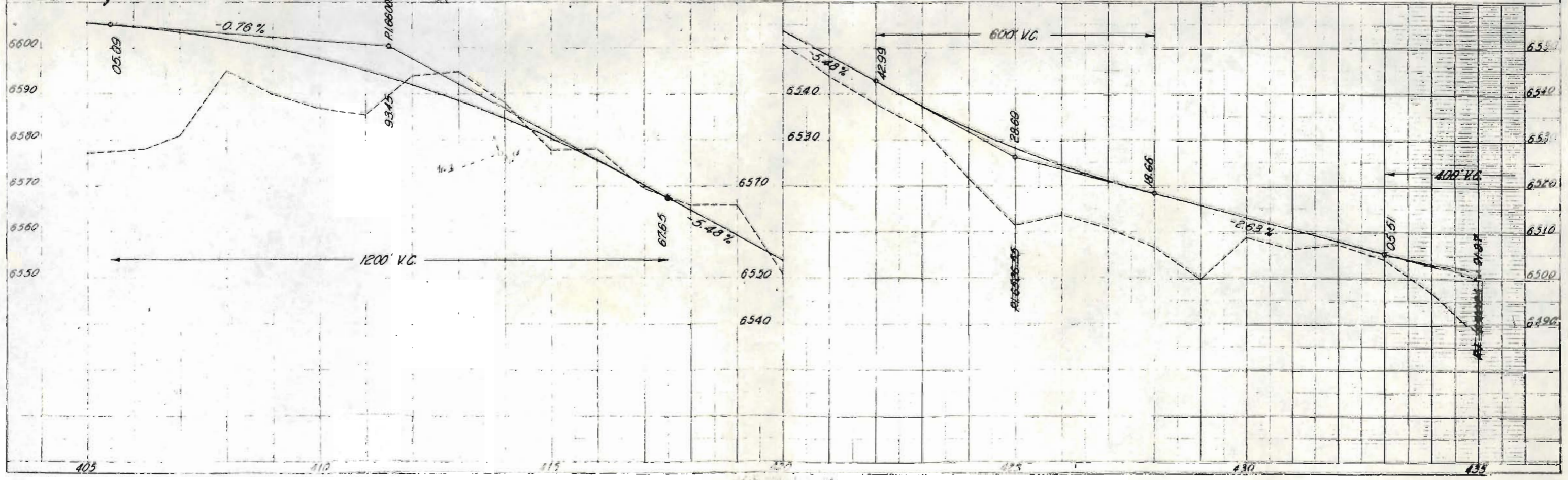
PLAN  
 NOTE: ROAD  
 1. SURVEYED  
 2. NOT SURVEYED



REVISION	PROJECT NO.	SHEET NO.
1-27-66	125-1(44)3	12
RIGHT OF WAY WOOTTON-STARKVILLE		
REVISIONS		
1-27-66	Rev ER 5 Rev. Add 5B Deleted ER 5A	FCM
3-29-66	Added Service Road & Barrier Line Par 5	VR
5-18-66	Added R.R. Tie Parcel ER 5 Rev 2	R.C.
9-15-66	Added Access Op. Sta. 407+	FCM

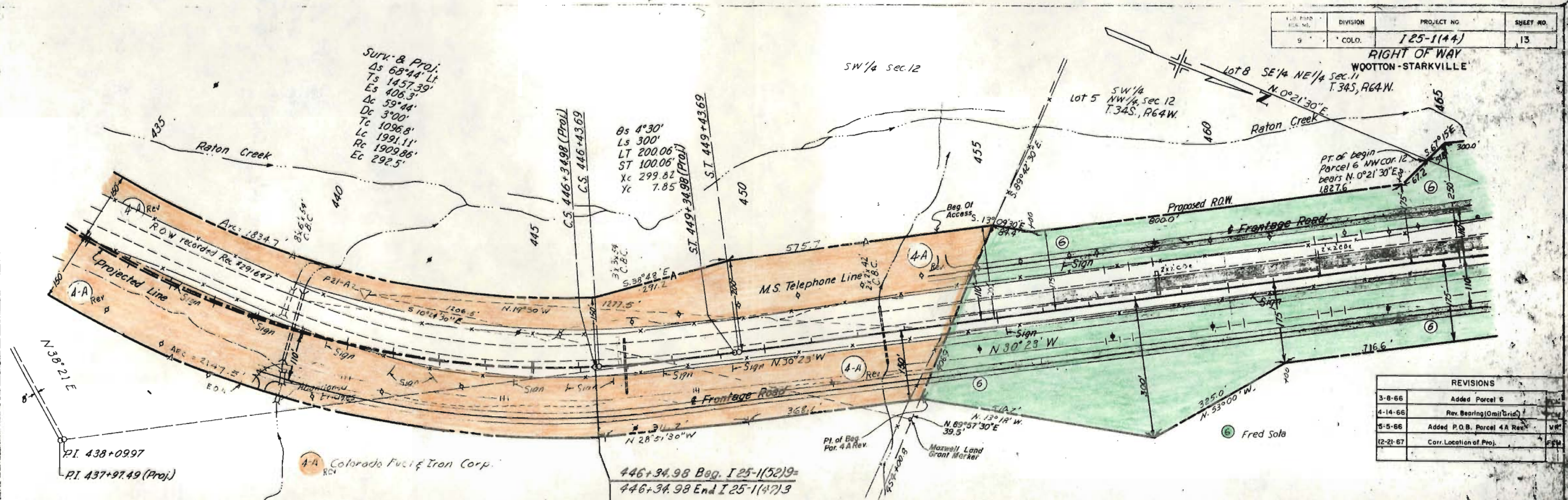


As 74°04'30" RI  
Ts 1232.78'  
Es 365.3'  
Δc 62°04'30" N 7°19' W  
Dc 4'00"  
Tc 862.0'  
Lc 1551.87'  
Rc 1432.39'  
Ec 259.8'  
Os 6'00"  
Ls 300'  
LT 200.11'  
ST 100.10'  
Kc 299.67'  
Yc 10.46'

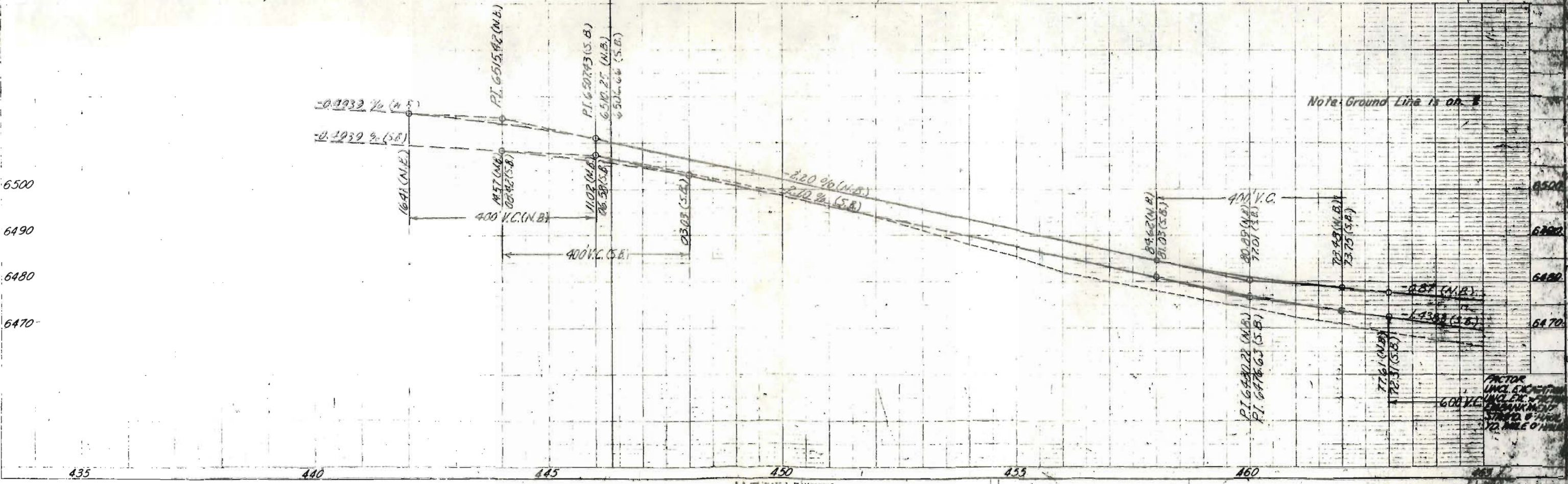


FILE NO.	DIVISION	PROJECT NO.	SHEET NO.
9	COLO.	125-1(44)	13

RIGHT OF WAY  
WOOTTON-STARKVILLE



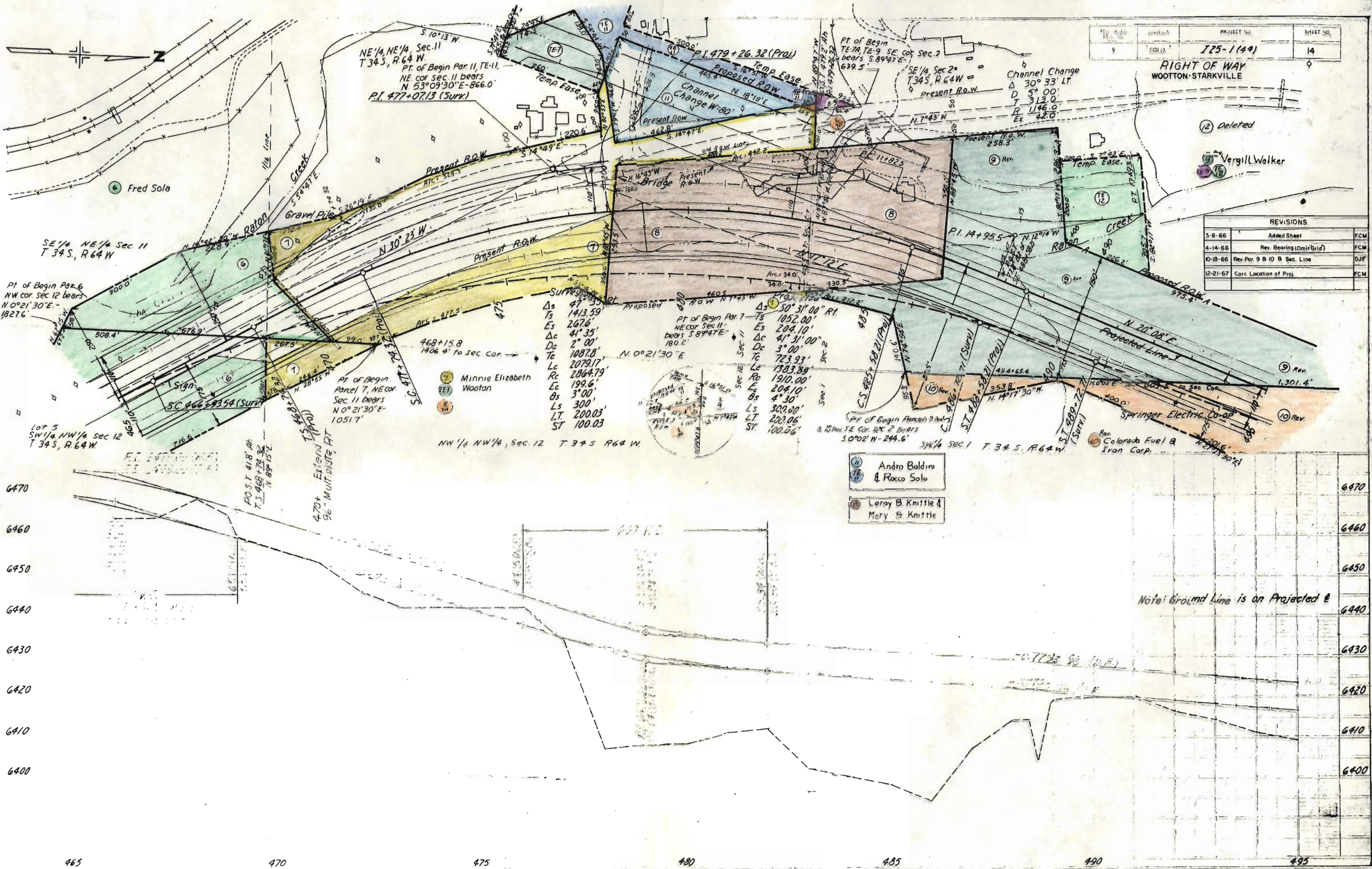
REVISIONS	
3-8-66	Added Parcel 6
4-14-66	Rev. Bearing (Omit Grid)
5-5-66	Added P.O.B. Parcel 4A Rev.
12-21-67	Corr. Location of Proj.



RIGHT OF WAY  
WOOTTON-STARKVILLE

12 Deleted  
Vergil Walker

REVISIONS		
3-8-66	Added Sheet	FCM
4-14-66	Rev. Bearing (Omit Grid)	FCM
10-18-66	Rev. Par. 9 & 10 B Sec. Line	DJF
12-21-67	Corr. Location of Proj.	FCM



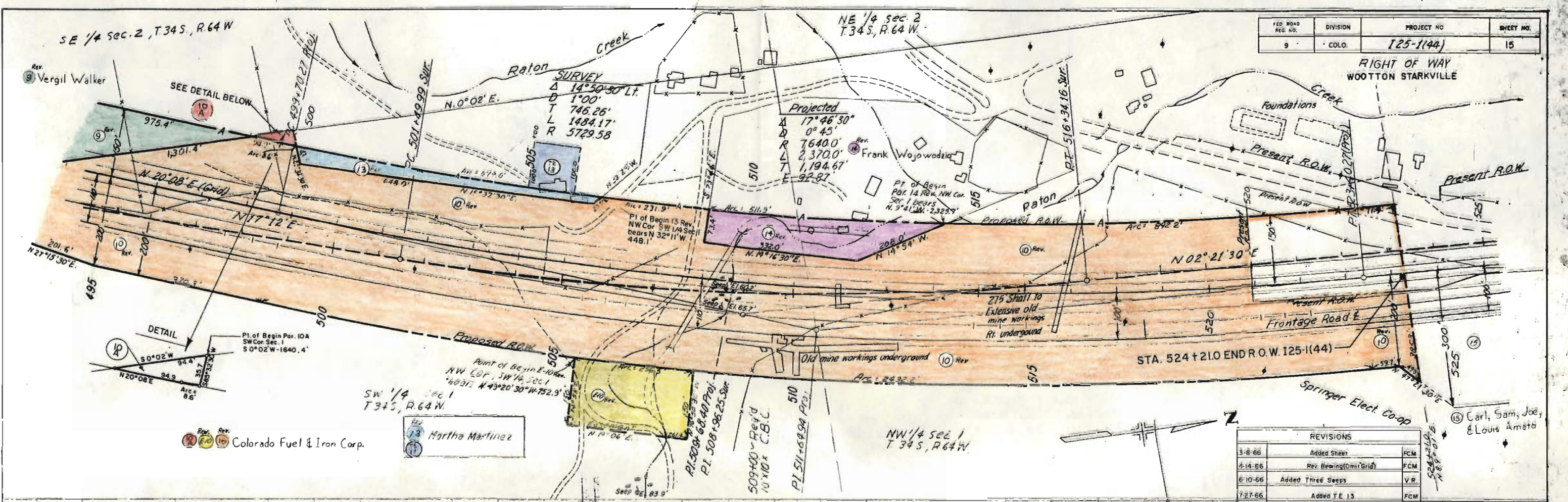
SURVEY POINTS	
Δs	47° 35'
Es	1413.59'
Es	267.6'
Δc	41° 35'
Dc	2° 00'
Tc	1087.8'
Lc	2079.17'
Rc	2064.79'
Ec	199.6'
Os	3° 00'
Ls	300'
LT	200.03'
ST	100.06'

Andro Baldini & Rocco Solo  
Leroy B. Knittle & Mary B. Knittle

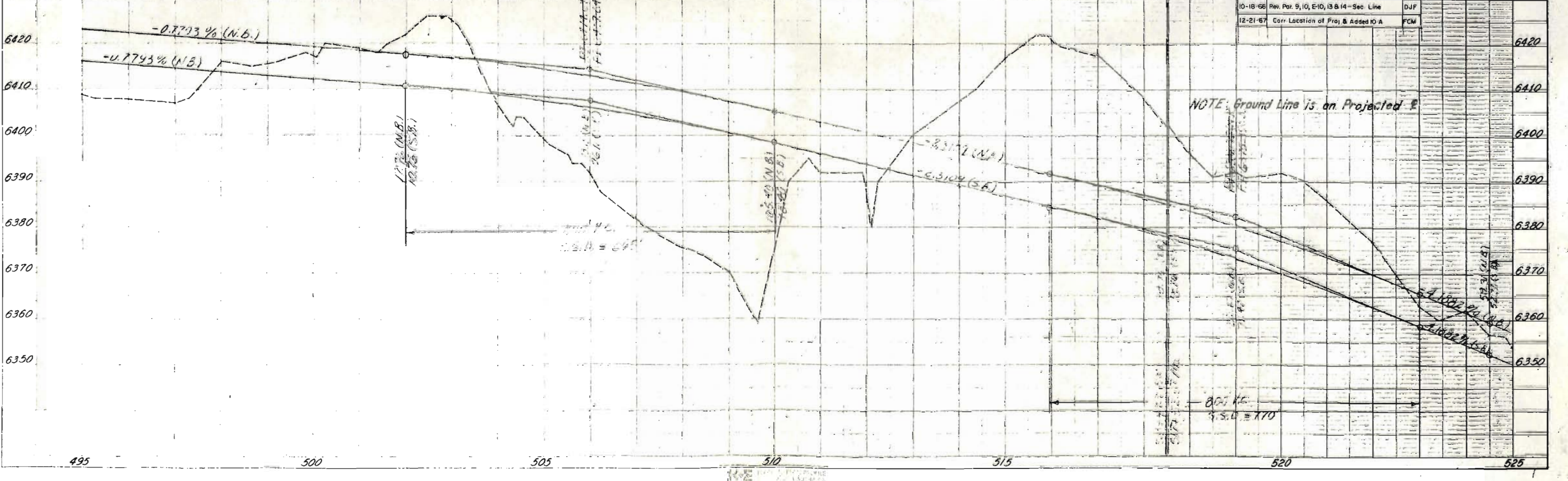
Note: Ground Line is on Projected E

FED. ROAD REG. NO.	DIVISION	PROJECT NO.	SHEET NO.
9	COLO.	125-1(44)	15

RIGHT OF WAY  
WOOTTON STARKVILLE



REVISIONS		
3-8-66	Added Sheet	FCM
4-14-66	Rev. Bearing (Omit Grid)	FCM
6-10-66	Added Three Sweeps	V.R.
7-27-66	Added TE 13	FCM
10-18-66	Rev. Par. 9, 10, E-10, 13 B 14 - Sec Line	DJF
12-21-67	Corr. Location of Proj. & Added IO A	FCM



PLAN

PROFILE

495

500

505

510

515

520

525

RIGHT OF WAY  
 WOOTTON-STARKVILLE

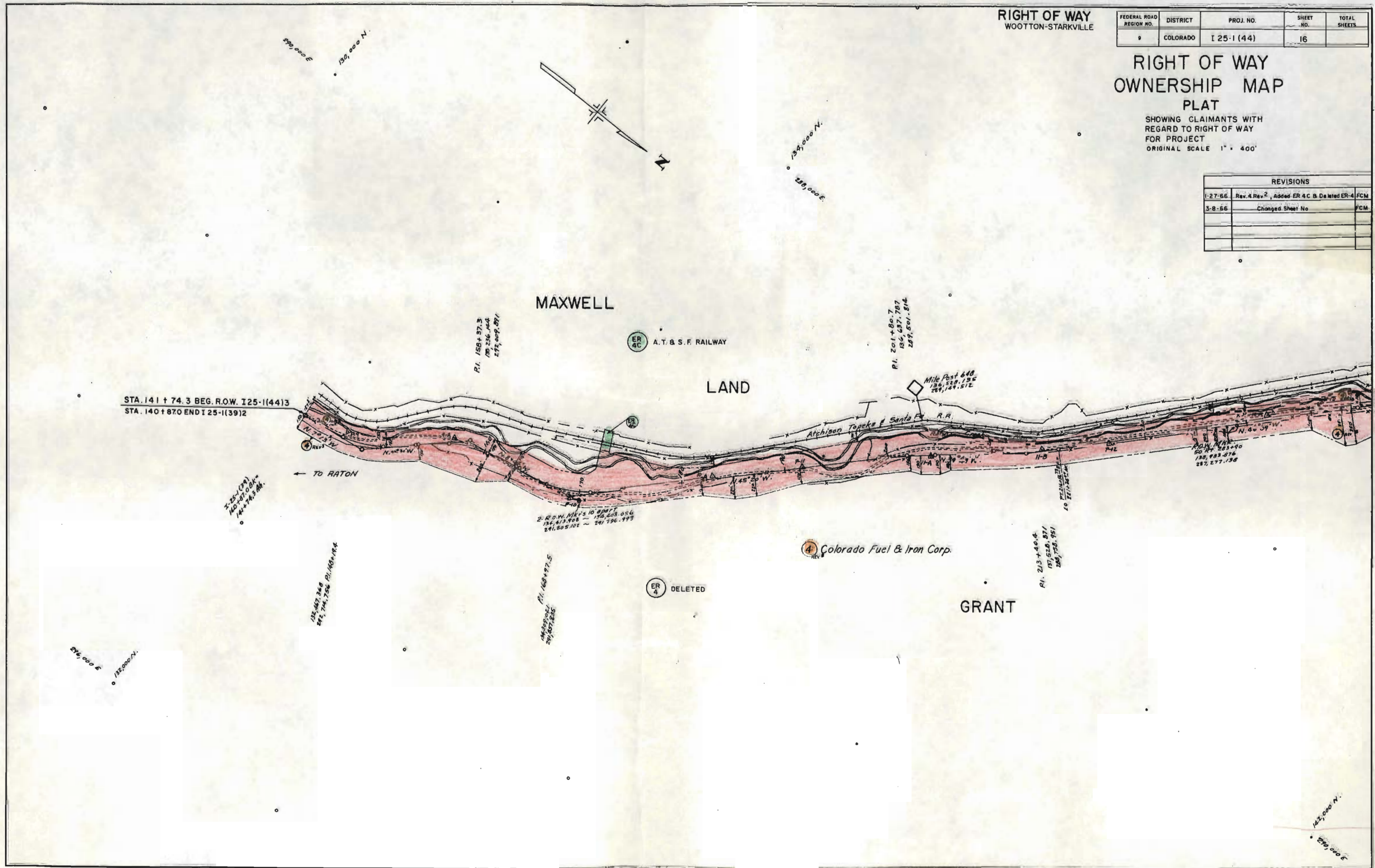
FEDERAL ROAD REGION NO.	DISTRICT	PROJ. NO.	SHEET NO.	TOTAL SHEETS
9	COLORADO	I 25-1 (44)	16	

RIGHT OF WAY  
 OWNERSHIP MAP  
 PLAT

SHOWING CLAIMANTS WITH  
 REGARD TO RIGHT OF WAY  
 FOR PROJECT  
 ORIGINAL SCALE 1" = 400'

REVISIONS		
1-27-66	Rev. A Rev. 2	Added ER 4 C & Deleted ER 4 FCM
3-8-66	Changed Sheet No	FCM

DEC 8 1965



MAXWELL

LAND

GRANT

A.T. & S.F. RAILWAY

Colorado Fuel & Iron Corp.

DELETED

STA. 141 + 74.3 BEG. R.O.W. I 25-1 (44) 3  
 STA. 140 + 870 END I 25-1 (39) 2

← TO RATON

Mile Post 648  
 136,528.13 E  
 287,144.512

2 R.O.W. MK'S 10' 8" 10' 11"  
 134,813.708 - 135,408.056  
 241,805.101 - 241,796.449

130,983.876  
 287,277.138

P.I. 213 + 40.4  
 137,528.871  
 287,758.751

P.I. 168 + 97.5  
 134,813.708  
 241,805.101

P.I. 142 + 36.8  
 131,744.756  
 P.I. 143 + 18.4

P.I. 158 + 37.3  
 139,236.444  
 272,809.871

P.I. 201 + 80.7  
 136,437.787  
 287,501.814

136,000 E  
 137,000 N

130,000 E  
 130,000 N

138,000 N  
 289,000 E

142,000 N  
 290,000 E

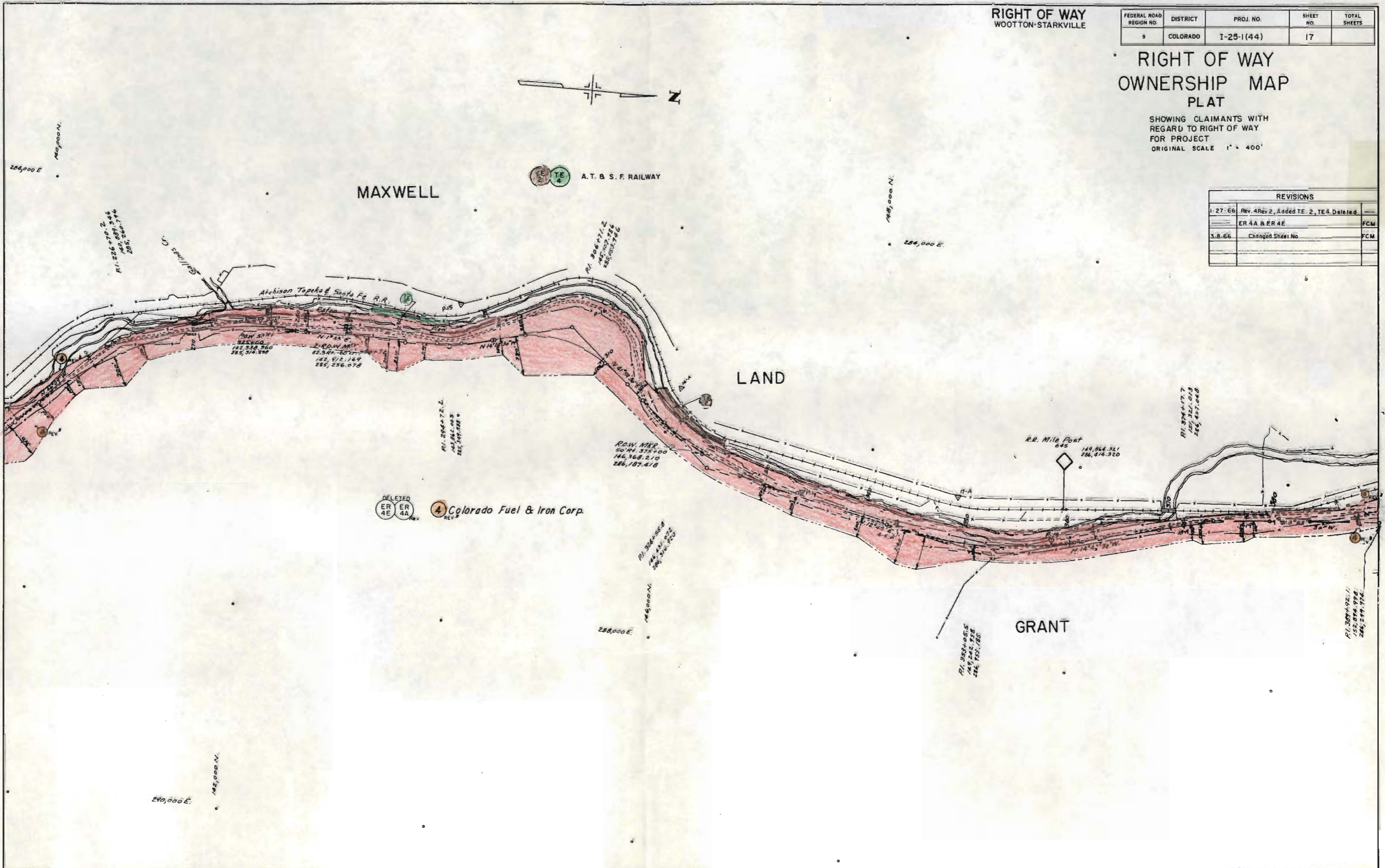
RIGHT OF WAY  
 WOOTTON-STARKVILLE

FEDERAL ROAD REGION NO.	DISTRICT	PROJ. NO.	SHEET NO.	TOTAL SHEETS
9	COLORADO	I-25-1(44)	17	

RIGHT OF WAY  
 OWNERSHIP MAP  
 PLAT

SHOWING CLAIMANTS WITH  
 REGARD TO RIGHT OF WAY  
 FOR PROJECT  
 ORIGINAL SCALE 1" = 400'

REVISIONS	
1-27-66	Rev. 4 Rev 2, Added TE 2, TE 4 Deleted ER 4A & ER 4E FCM
3-8-66	Changed Sheet No FCM



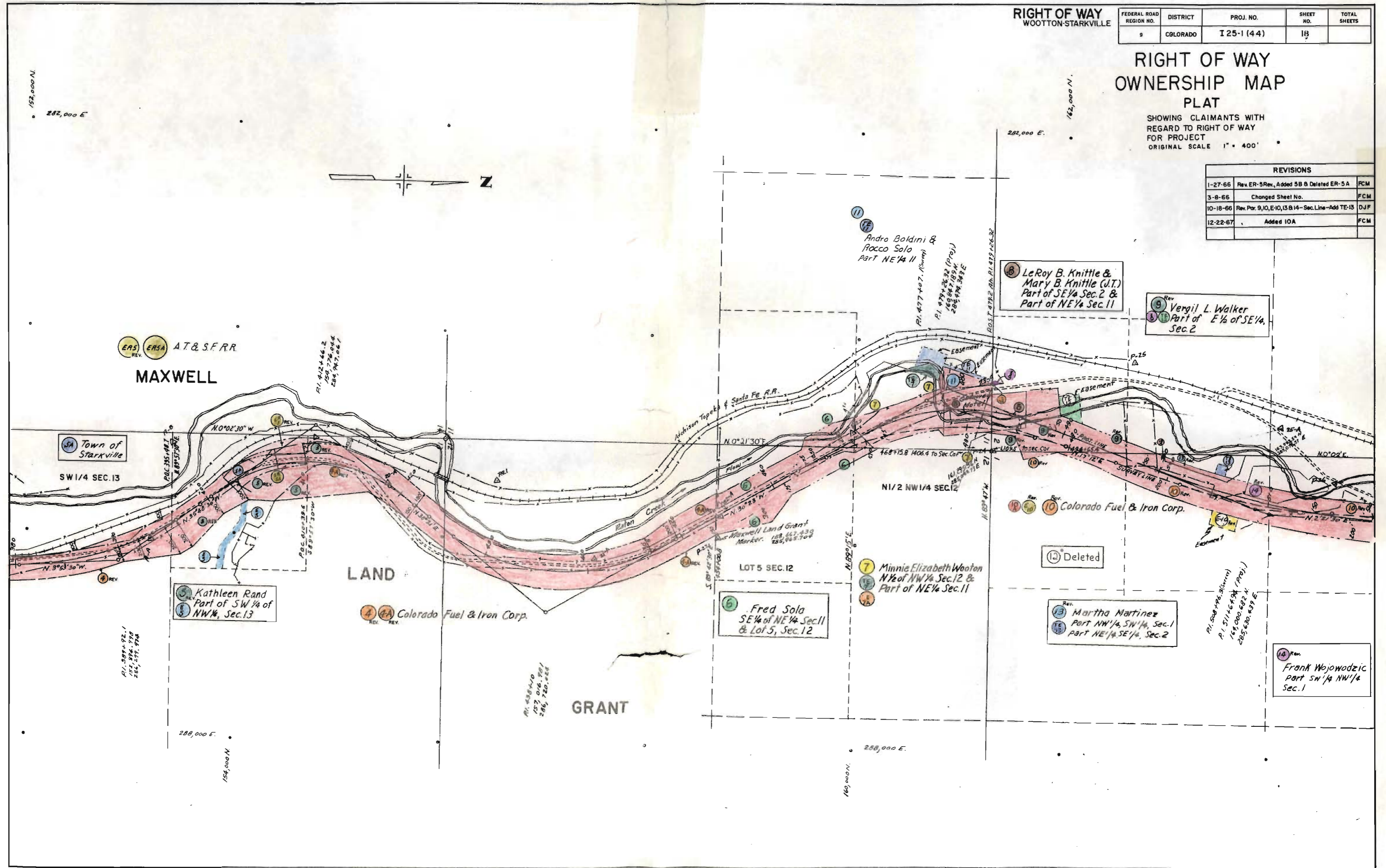
**RIGHT OF WAY**  
WOOTTON-STARKVILLE

FEDERAL ROAD REGION NO.	DISTRICT	PROJ. NO.	SHEET NO.	TOTAL SHEETS
9	COLORADO	I 25-1 (44)	18	

**RIGHT OF WAY OWNERSHIP MAP PLAT**

SHOWING CLAIMANTS WITH REGARD TO RIGHT OF WAY FOR PROJECT  
ORIGINAL SCALE 1" = 400'

REVISIONS			
1-27-66	Rev. ER-5 Rev., Added 5B Deleted ER-5A	FCM	
3-8-66	Changed Sheet No.	FCM	
10-18-66	Rev. Por. 9, 10, E-10, 13 & 14 - Sec. Line - Add TE-13	DJF	
12-22-67	Added IOA	FCM	



ERS, ERSA AT&SFRR  
**MAXWELL**

Town of Starkville  
SW 1/4 SEC. 13

**LAND**

Colorado Fuel & Iron Corp.

Fred Solo  
SE 1/4 of NE 1/4 Sec. 11  
& Lot 5, Sec. 12

Minnie Elizabeth Wootton  
N 1/2 of NW 1/4 Sec. 12 &  
Part of NE 1/4 Sec. 11

Martha Martinez  
Part NW 1/4 SW 1/4 Sec. 1  
part NE 1/4 SE 1/4 Sec. 2

LeRoy B. Knittle &  
Mary B. Knittle (J.T.)  
Part of SE 1/4 Sec. 2 &  
Part of NE 1/4 Sec. 11

Vergil L. Walker  
Part of E 1/4 of SE 1/4  
Sec. 2

Colorado Fuel & Iron Corp.

Deleted

Frank Wojowozic  
part SW 1/4 NW 1/4  
Sec. 1

**GRANT**