

DEPARTMENT OF HIGHWAYS STATE OF COLORADO

PLAN AND PROFILE OF PROPOSED FEDERAL AID PROJECT NO. I 25-2 (68) 117 STATE HIGHWAY NO. +25 EL PASO COUNTY RIGHT OF WAY

REVISIONS		FEDERAL ROAD DIVISION NO.	DISTRICT	PROJ NO	SHEET NO.	TOT SHE
		9	COLORADO	I 25-2(68)117	1	

RIGHT OF WAY SOUTH OF FOUNTAIN

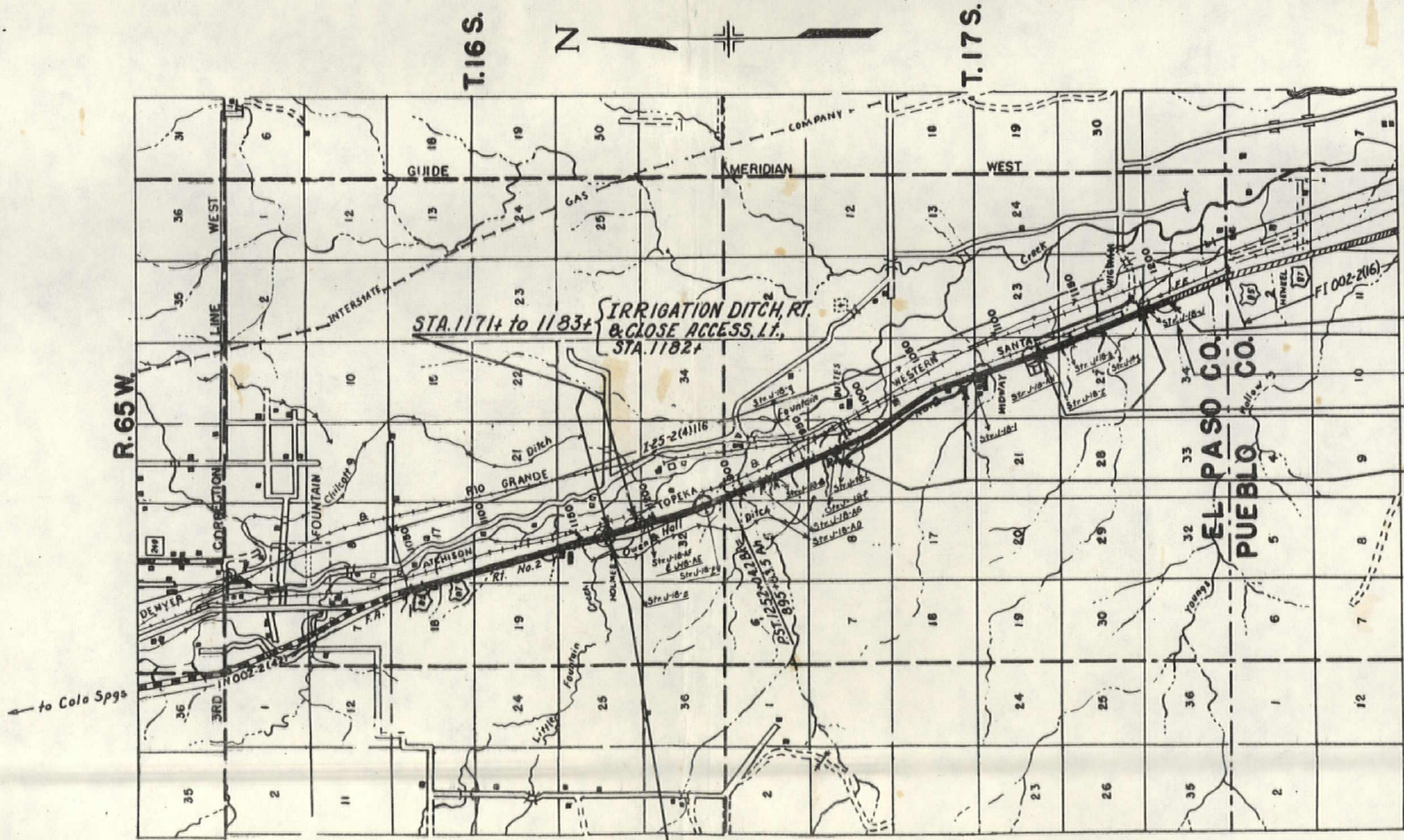
INDEX OF SHEETS
SHEET NO. 1 TITLE SHEET
2 TABULATION SHEET
3-12 PLAN AND PROFILE SHEETS

CONVENTIONAL SIGNS

CENTER LINE	PLAN SHEET	TITLE SHEET
RIGHT OF WAY LINE	R.O.W. MARKER	
COUNTY LINE		
TOWNSHIP OR RANGE LINE		
LAND LINES	SECTION LINE	1/4 SECTION LINE
RAILROAD	TITLE SHEET	PLAN SHEET
BARBED WIRE FENCE		
COMBINATION WIRE FENCE		
SNOW FENCE		
TELEPHONE & TELEGRAPH LINES		
POWER LINE		
DETOUR		
PRESENT ROAD (Plan Sheets)		
ACCESS POINTS	24' (COMMERCIAL)	16' (NON COMMERCIAL)
ACCESS DENIED BY DEED	A	A

SCALES OF ORIGINAL DRAWINGS
ON PLAN, 1 IN. = 100 FT.
ON PROFILE, 1 IN. = 100 FT. HORIZONTAL
1 IN. = 10 FT. VERTICAL
GRADE LINE ON PROFILE IS SHOWN AS GRADE OF FINISHED ROAD
GROSS LENGTH OF PROJECT -)
NET LENGTH OF PROJECT -)

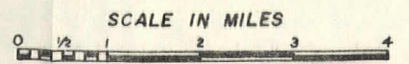
NOTE:
R.O.W. ON THIS PROJECT CONSISTS OF CLOSING R.O.W. OPENINGS AND ACQUISITION OF TWO (2) PARCELS



STA. 1203+00-END I-25-2(68)117-
STA. 1203+00 on I-25-2(4)116
STA. 1203+ - CLOSE ACCESS, RT.
STA. 1123+ to 1185+ - FRONTAGE ROAD, LT.

STA. 969+ to 1065+ - FRONTAGE ROAD, RT.

STA. 1171+00-BEGIN I-25-2(68)117-
STA. 1171+00 on I-25-2(4)116



FILE COPY
DO NOT REMOVE

N.E. 1/4 SEC. 29
T.16S., R. 65W.

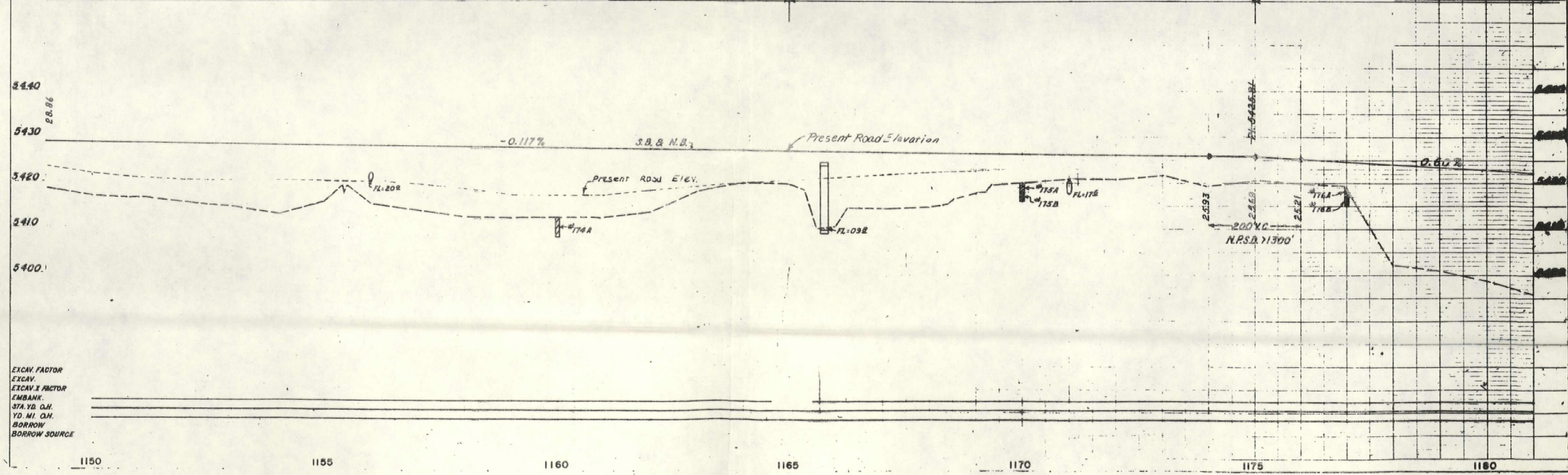
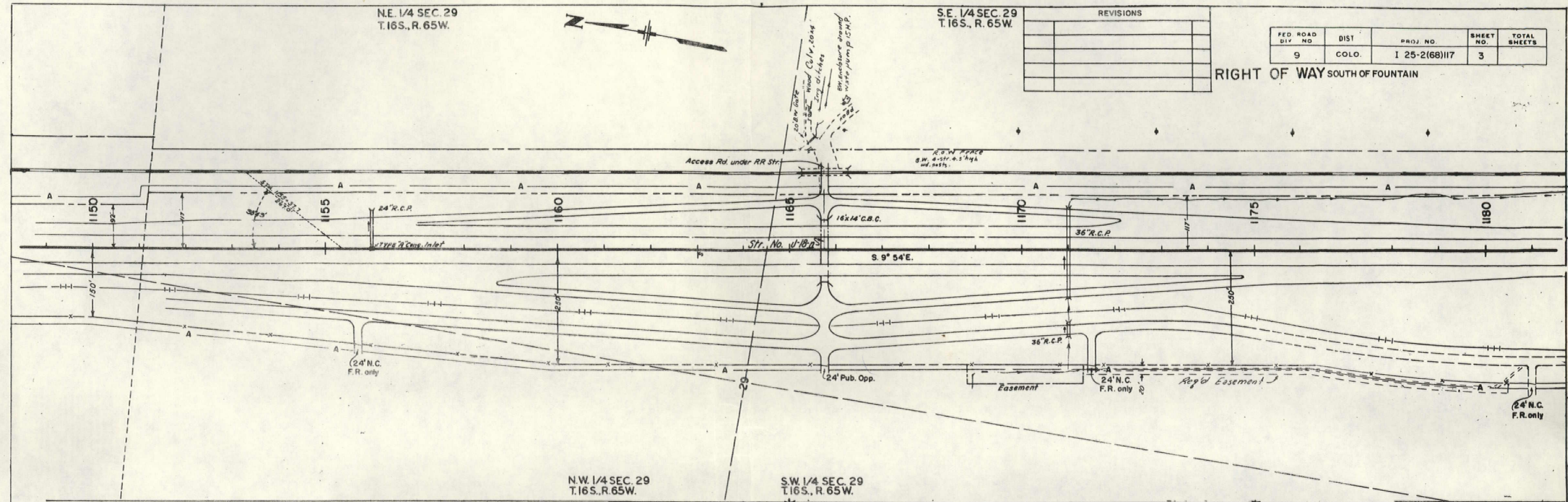
S.E. 1/4 SEC. 29
T.16S., R. 65W.



REVISIONS	

FED. ROAD DIV. NO.	DIST.	PROJ. NO.	SHEET NO.	TOTAL SHEETS
9	COLO.	I 25-2(68)117	3	

RIGHT OF WAY SOUTH OF FOUNTAIN



EXCAV. FACTOR
 EXCAV.
 EXCAV. X FACTOR
 EMBANK.
 STA. YD. O.H.
 YD. MI. O.H.
 BORROW
 BORROW SOURCE

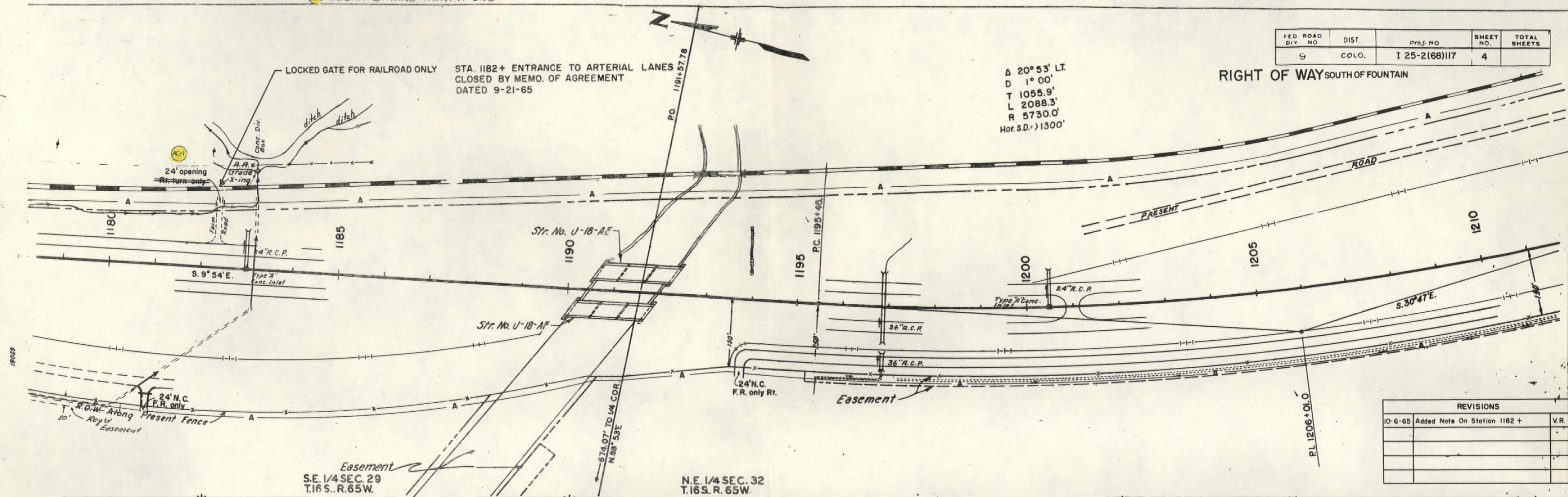
19029

00030

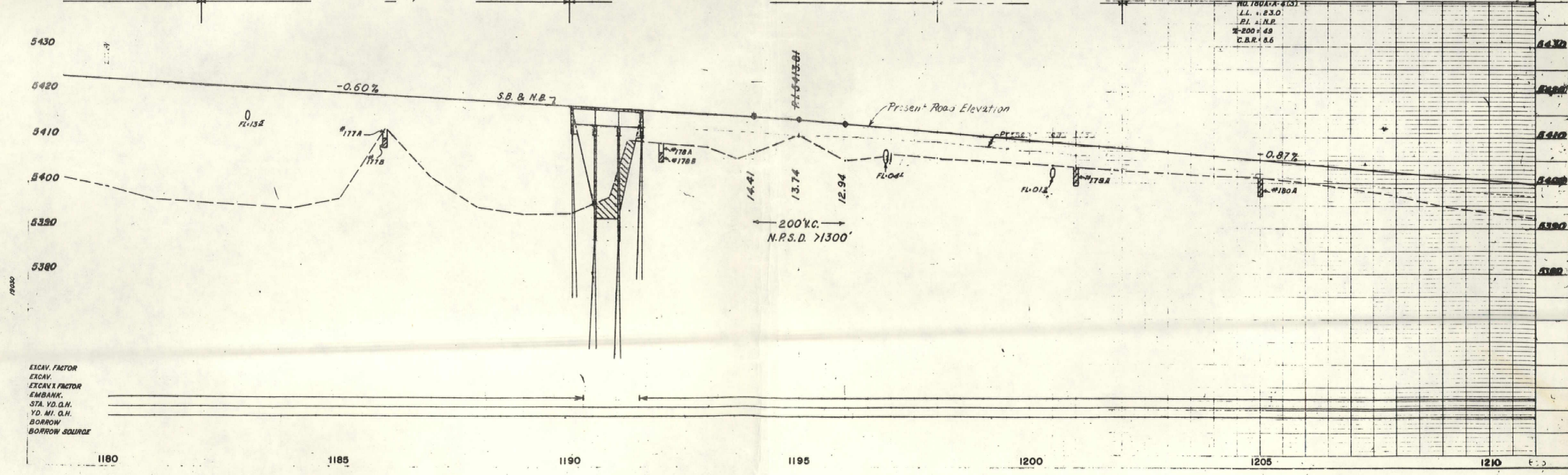
FED. ROAD DIV. NO.	DIST.	Proj. NO.	SHEET NO.	TOTAL SHEETS
9	COLO.	I 25-2(68)117	4	

RIGHT OF WAY SOUTH OF FOUNTAIN

Δ 20° 53' LT.
 D 1° 00'
 T 1055.9'
 L 2088.3'
 R 5730.0'
 Hor. S.D. > 1300'



REVISIONS		
10-6-65	Added Note On Station 1182 +	V.R.



EXCAV. FACTOR
 EXCAV.
 EXCAV. FACTOR
 EMBANK.
 STA. VD. Q.H.
 YD. MI. Q.H.
 BORROW
 BORROW SOURCE

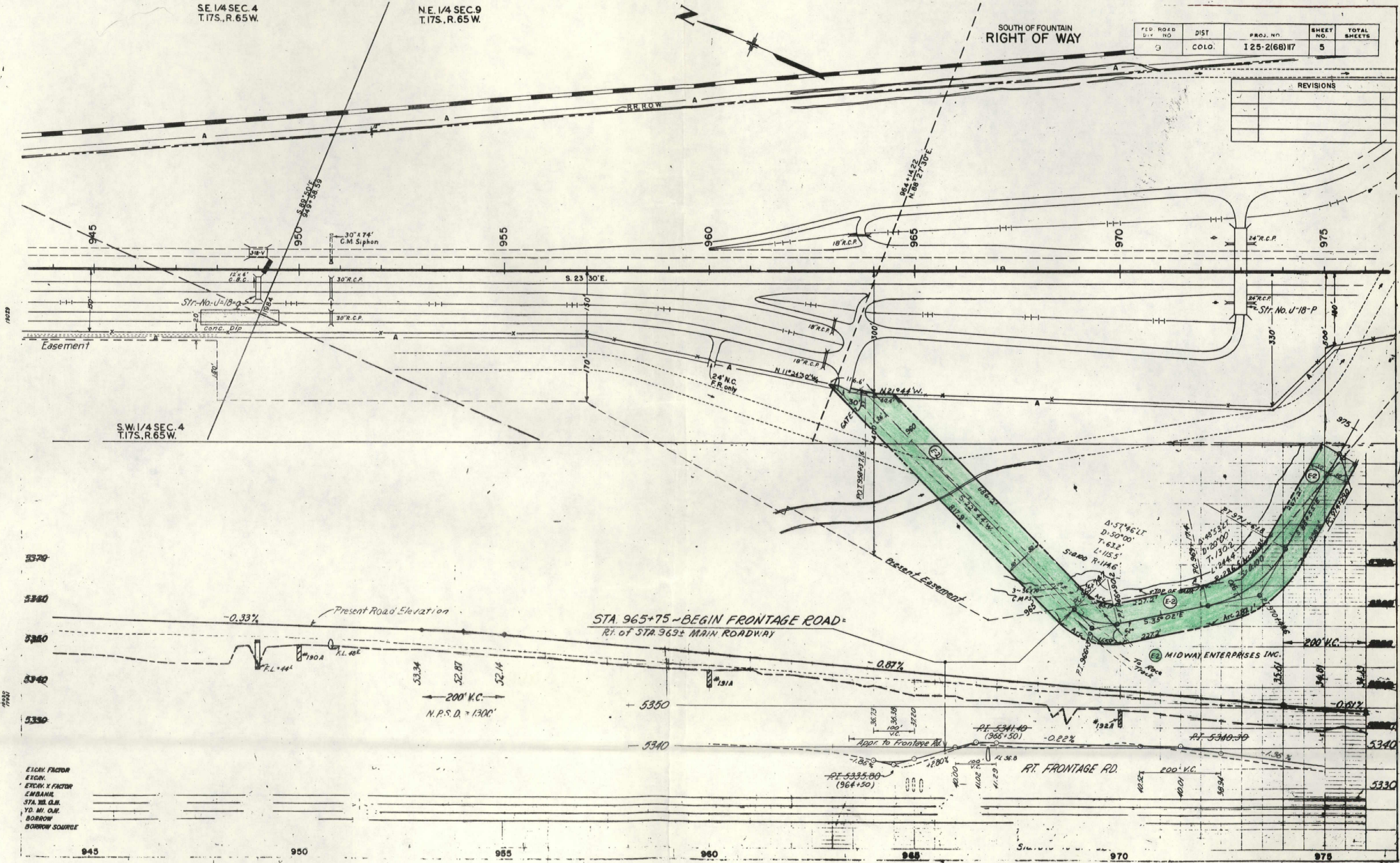
SE 1/4 SEC. 4
T.17S., R. 65W.

NE 1/4 SEC. 9
T.17S., R. 65W.

SOUTH OF FOUNTAIN
RIGHT OF WAY

FED. ROAD DIST. NO.	DIST. COLO.	PROJ. NO.	SHEET NO.	TOTAL SHEETS
3		125-2(68)117	5	

REVISIONS	



EXCAV. FACTOR
 EXCAV. X FACTOR
 EMBANK.
 STA. TO C.B.C.
 YD. MI. C.M.
 BORROW
 BORROW SOURCE

945 950 955 960 965 970 975

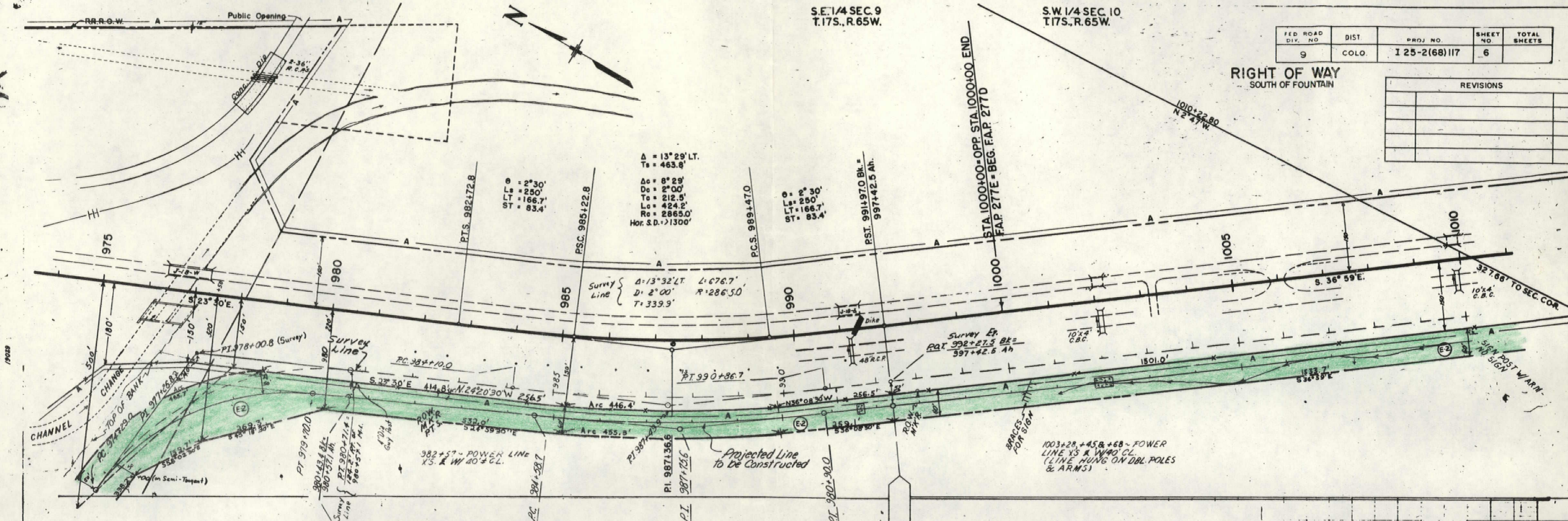
S.E. 1/4 SEC. 9
T.17S., R.65W.

S.W. 1/4 SEC. 10
T.17S., R.65W.

FED. ROAD DIV. NO.	DIST.	PROJ. NO.	SHEET NO.	TOTAL SHEETS
9	COLO.	I 25-2(68)117	6	

RIGHT OF WAY
SOUTH OF FOUNTAIN

REVISIONS	



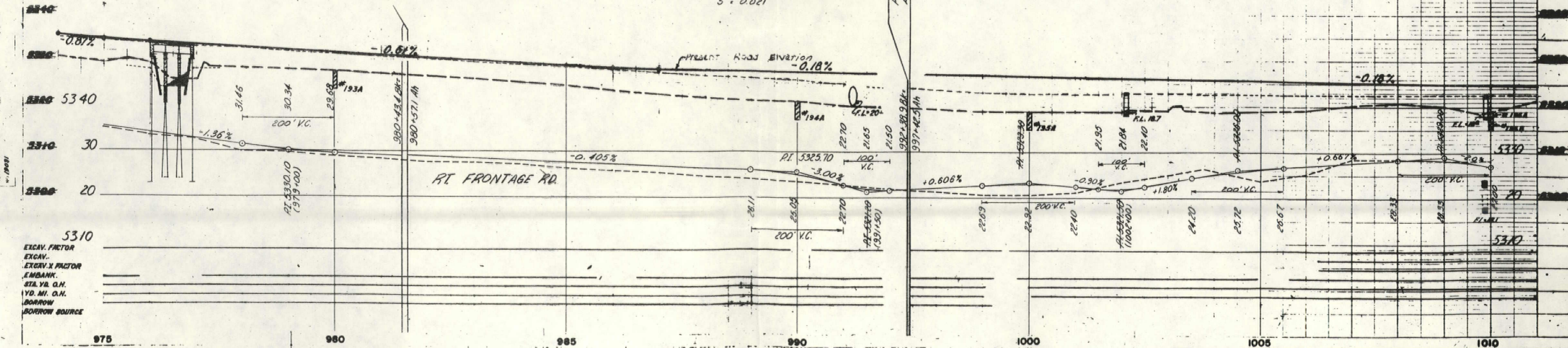
Surv. Line
 $\Delta = 60^{\circ}25' R$
 $D = 10^{\circ}00'$
 $T = 333.6'$
 $L = 604.2'$
 $R = 573.0'$

Proj. Line
 $\Delta = 59^{\circ}30'30'' R$
 $D = 11^{\circ}00'$
 $T = 297.8'$
 $L = 541.0'$
 $R = 520.9'$
 $S = 0.085$

Proj. Line
 $\Delta = 12^{\circ}37'30'' L$
 $D = 2^{\circ}00'$
 $T = 316.9'$
 $L = 631.3'$
 $R = 2865.0'$
 $S = 0.021$

SERV. P.W. TRANSFORMS:
 43" CONC. CIST. TAN
 GUY PST. W/M.T.R.
 WINDMILL
 4' X 4' BASE

MIDWAY ENTERPRISES INC.



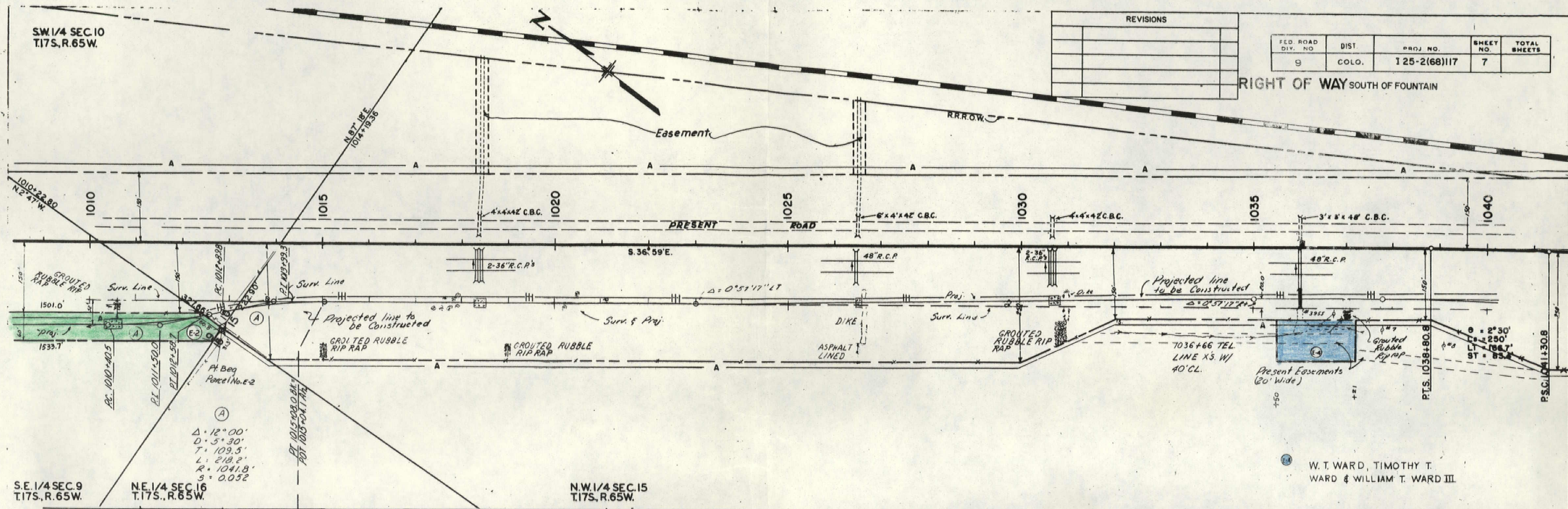
EXCAV. FACTOR
 EXCAV. X FACTOR
 EMBANK.
 STA. VS. O.H.
 YD. MI. O.H.
 BORROW
 BORROW SOURCE

SW 1/4 SEC. 10
T.17S., R.65W.

REVISIONS				

FED. ROAD DIV. NO.	DIST.	PROJ. NO.	SHEET NO.	TOTAL SHEETS
9	COLO.	125-2(68)117	7	

RIGHT OF WAY SOUTH OF FOUNTAIN



$\Delta = 12^{\circ} 00'$
 $D = 5^{\circ} 30'$
 $T = 109.5'$
 $L = 218.2'$
 $R = 1041.8'$
 $S = 0.052$

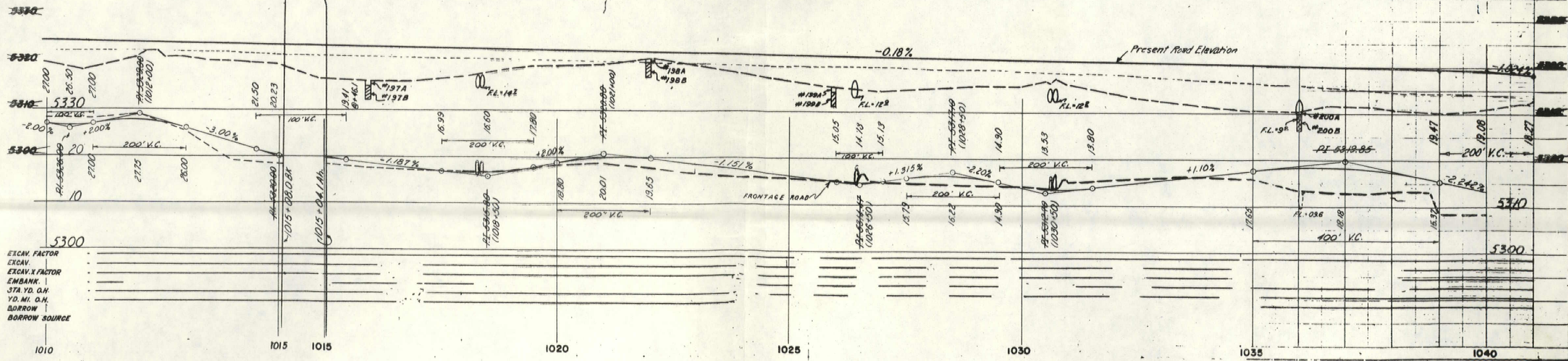
S.E. 1/4 SEC. 9
T.17S., R.65W.

N.E. 1/4 SEC. 16
T.17S., R.65W.

N.W. 1/4 SEC. 15
T.17S., R.65W.

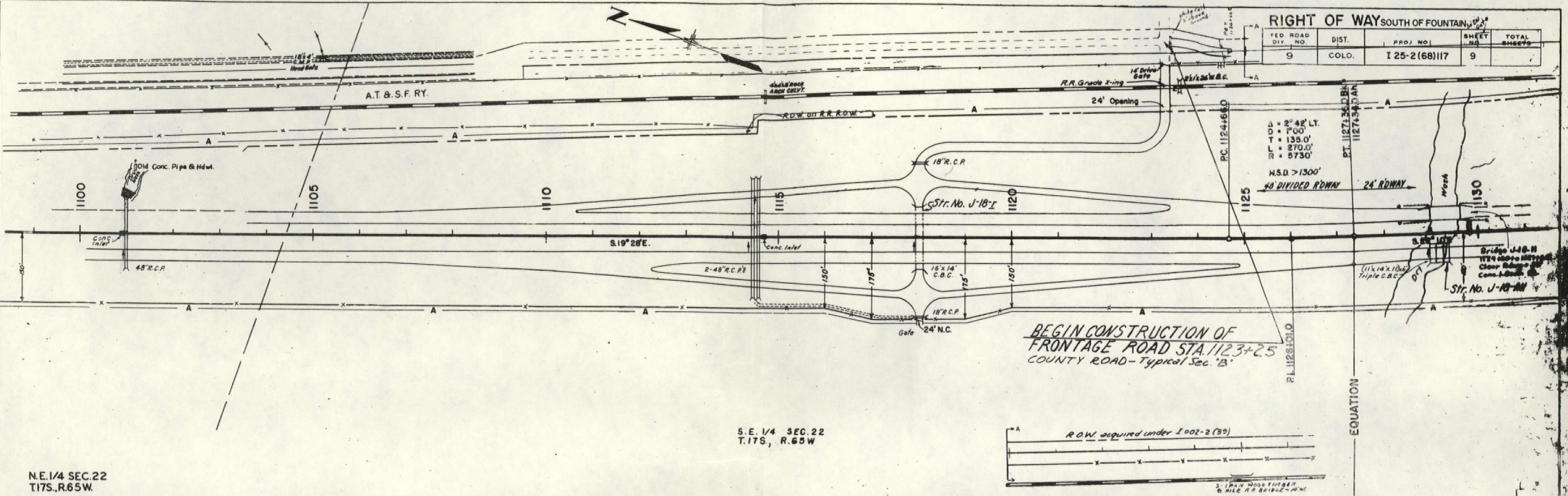
MIDWAY ENTERPRISES INC.

W. T. WARD, TIMOTHY T. WARD & WILLIAM T. WARD III



EXCAV. FACTOR
 EXCAV. X FACTOR
 EMBANK.
 STA. YD. O.H.
 YD. MI. O.H.
 BORROW SOURCE

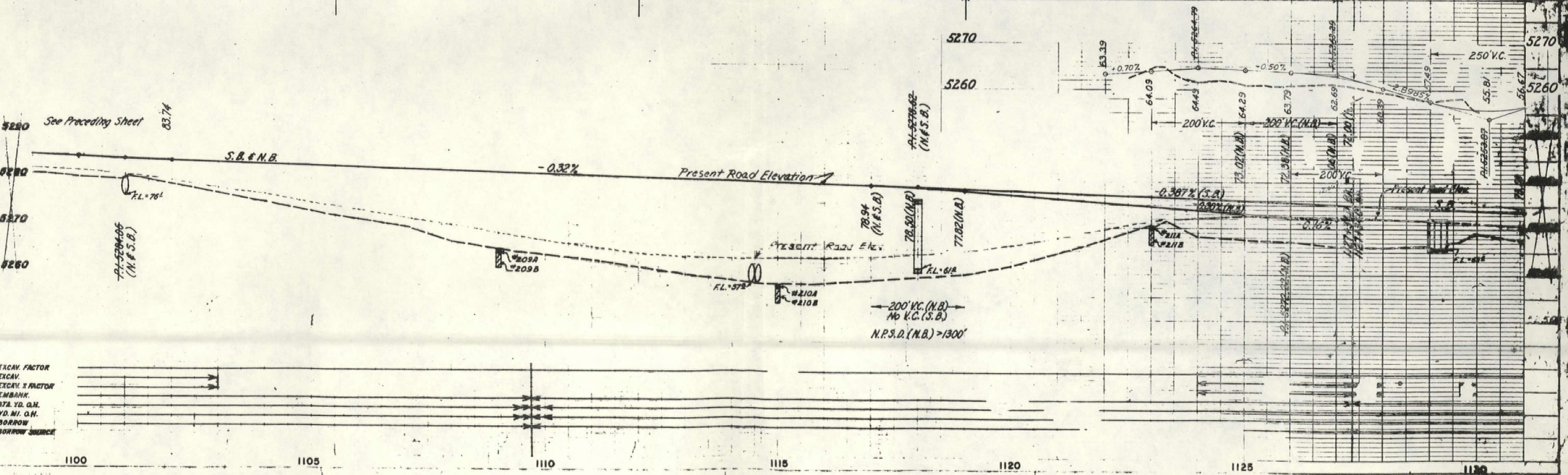
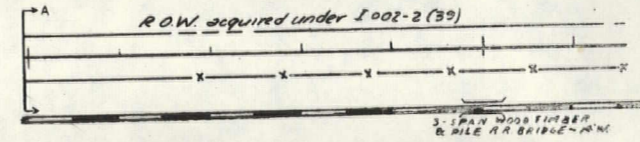
FED. ROAD DIV. NO.	DIST.	PROJ. NO.	SHEET NO.	TOTAL SHEETS
9	COLO.	I 25-2(68)117	9	



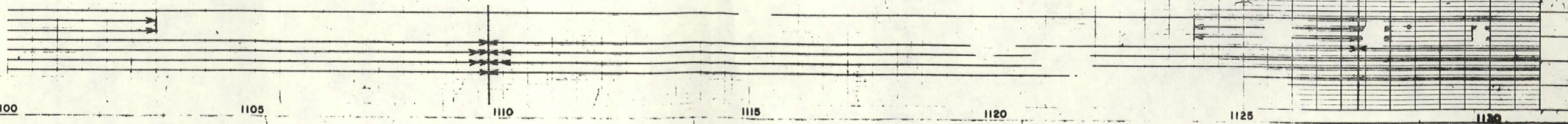
BEGIN CONSTRUCTION OF FRONTAGE ROAD STA 1123+25 COUNTY ROAD - Typical Sec. 'B'

S.E. 1/4 SEC. 22 T.17S, R.65W

N.E. 1/4 SEC. 22 T.17S, R.65W

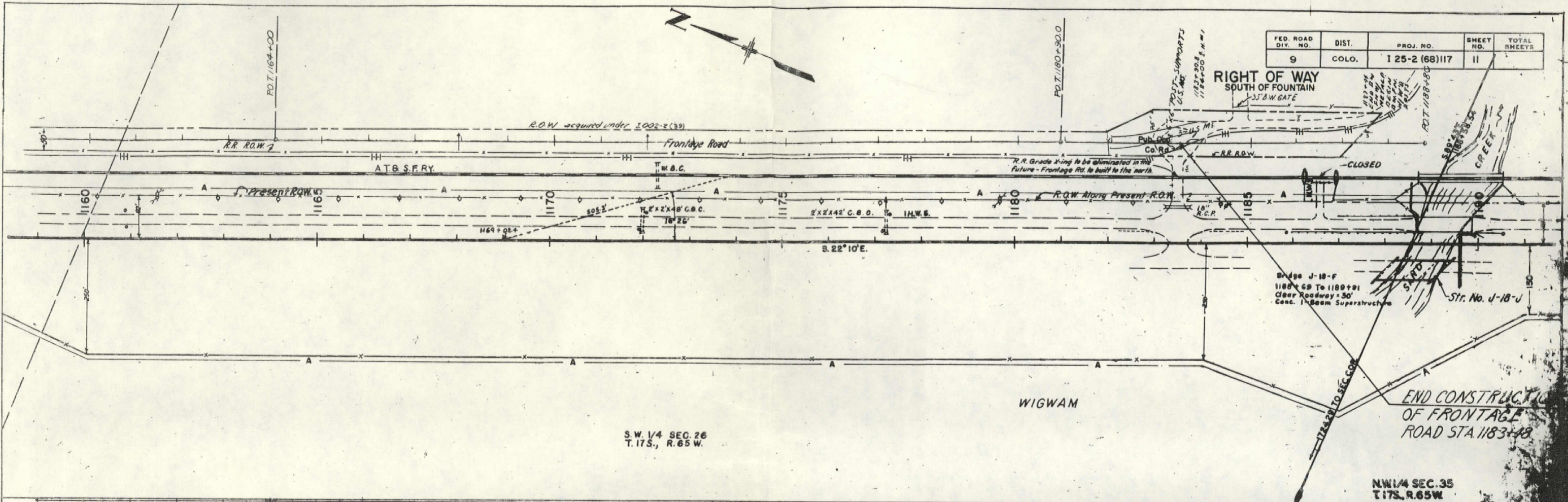


EXCAV. FACTOR
EXCAV.
EXCAV. X FACTOR
EMBANK.
STA. YD. Q.H.
YD. MI. Q.H.
BORROW
BORROW SOURCE



FED. ROAD DIV. NO.	DIST. COLO.	PROJ. NO.	SHEET NO.	TOTAL SHEETS
9		I 25-2 (68) 117	11	

RIGHT OF WAY SOUTH OF FOUNTAIN
33' B.W. GATE

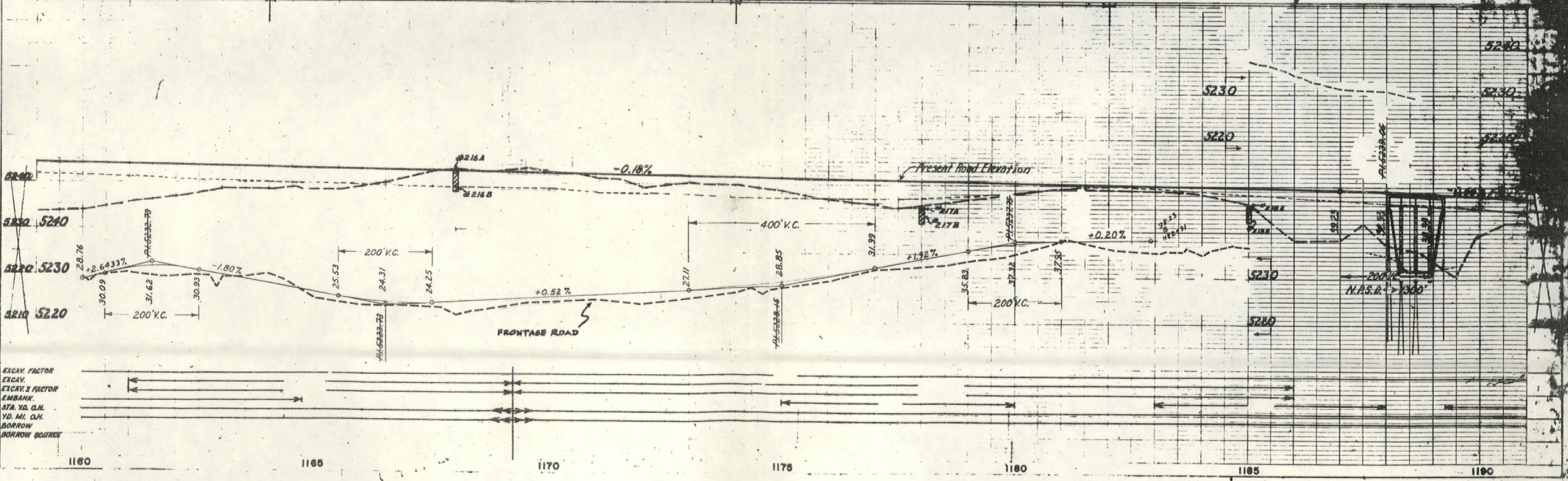


S.W. 1/4 SEC. 26
T. 17S., R. 65W.

WIGWAM

END CONSTRUCTION
OF FRONTAGE
ROAD STA 1183+48

N.W. 1/4 SEC. 35
T. 17S., R. 65W.



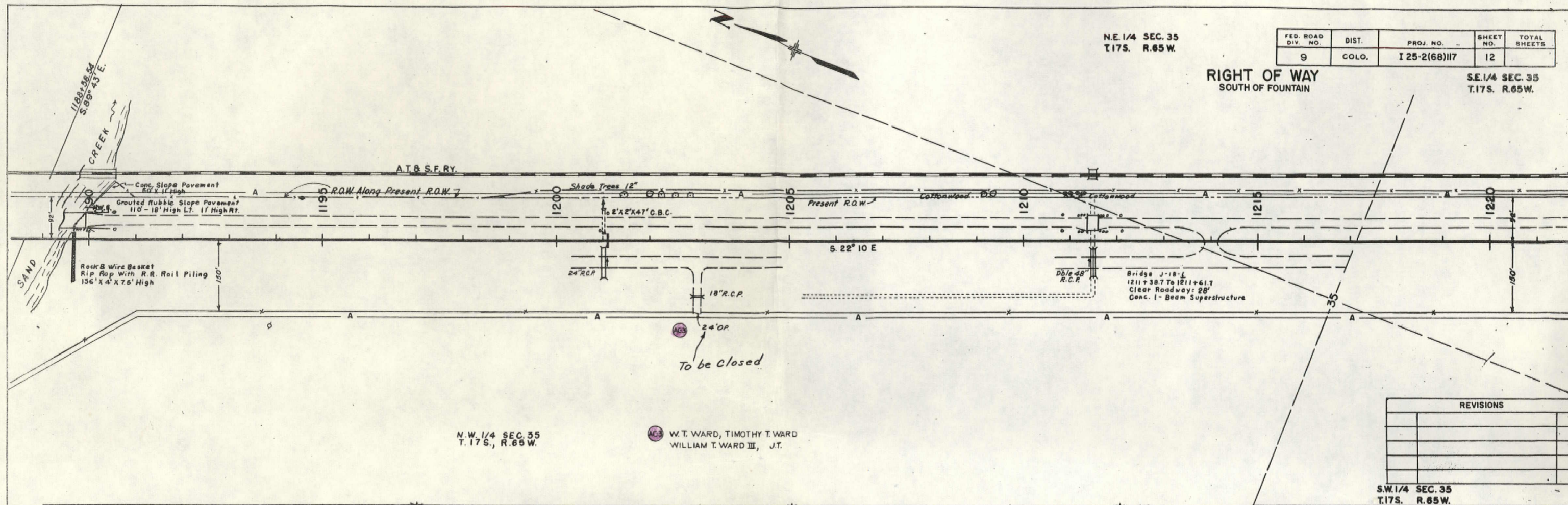
EXCAV. FACTOR
EXCAV.
EXCAV. & FACTOR
EMBANK.
STA. YD. C.M.
YD. MI. C.M.
BORROW
BORROW SOURCE

N.E. 1/4 SEC. 35
T.17S. R.65W.

FED. ROAD DIV. NO.	DIST.	PROJ. NO.	SHEET NO.	TOTAL SHEETS
9	COLO.	I 25-2(68)117	12	

RIGHT OF WAY
SOUTH OF FOUNTAIN

S.E. 1/4 SEC. 35
T.17S. R.65W.

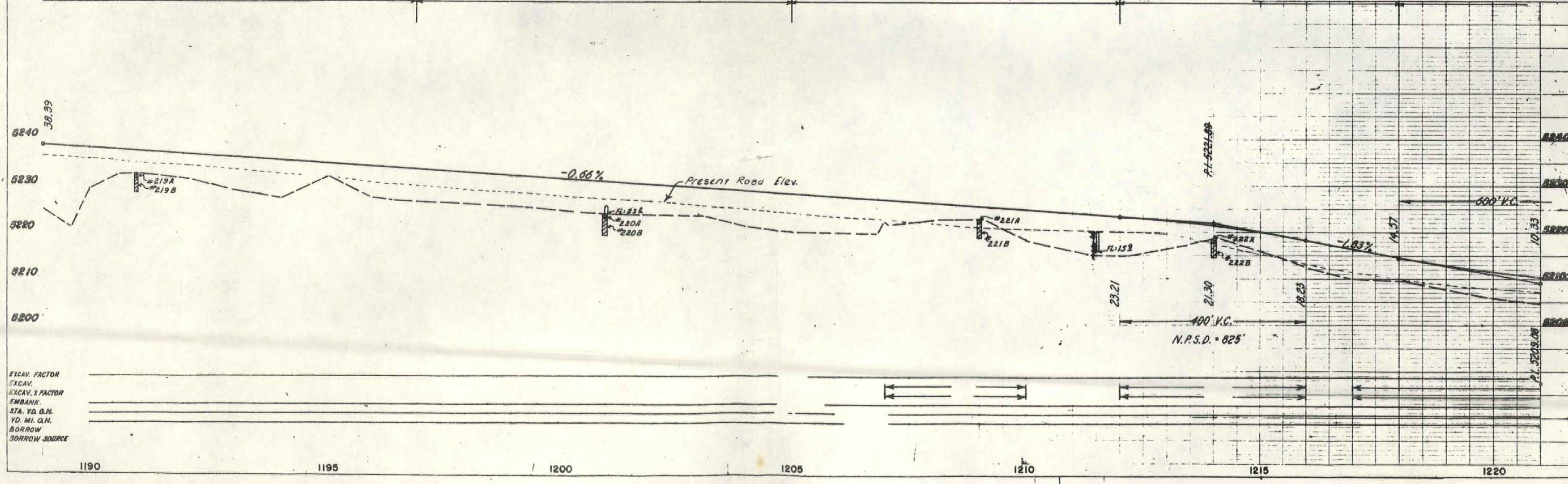


N.W. 1/4 SEC. 35
T.17S. R.65W.

W.T. WARD, TIMOTHY T. WARD
WILLIAM T. WARD III, J.T.

REVISIONS	

S.W. 1/4 SEC. 35
T.17S. R.65W.



EXCAV. FACTOR
EXCAV.
EXCAV. X FACTOR
EMBANK.
STA. YQ. O.H.
YD. MI. O.H.
BORROW
BORROW SOURCE