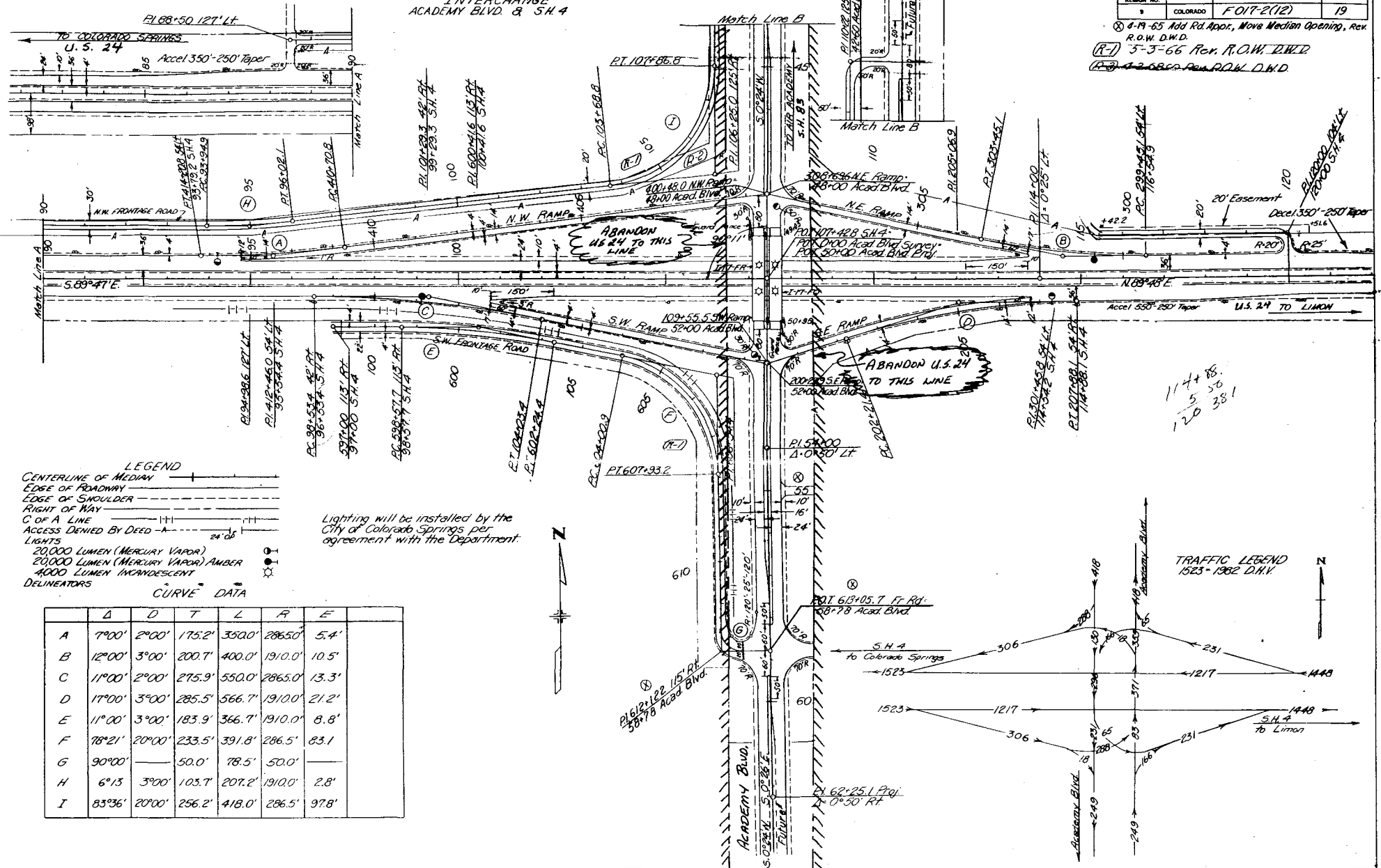


INTERCHANGE ACADEMY BLVD. & S.H. 4

FEDERAL ROAD REGION NO.	DIVISION	PROJECT NO.	SHEET NO.
8	COLORADO	FOIT-2(12)	19

① 4-19-65 Add Rd. Appr., Move Median Opening, Rev. R.O.W. D.W.D.
 (R-1) 5-3-66 Rev. R.O.W. D.W.D.
 (R-2) 4-2-66 Rev. R.O.W. D.W.D.



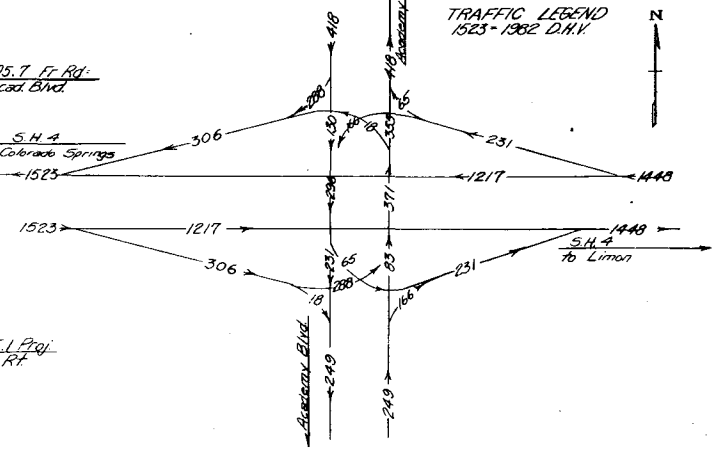
LEGEND

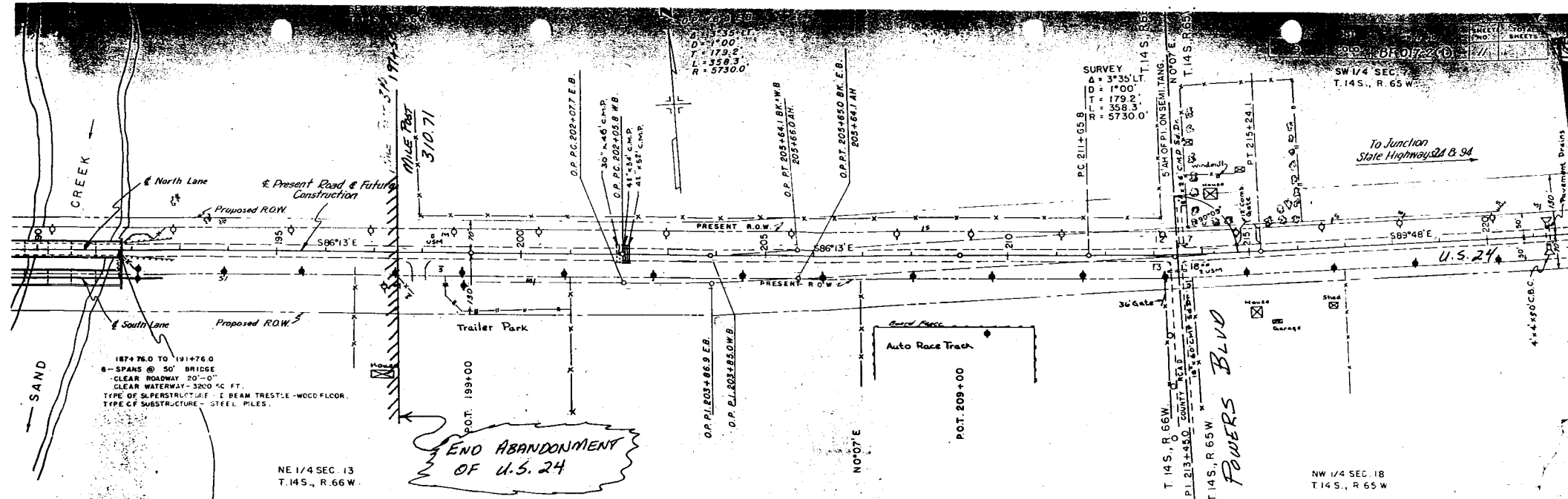
CENTERLINE OF MEDIAN
 EDGE OF ROADWAY
 EDGE OF SHOULDER
 RIGHT OF WAY
 C OF A LINE
 ACCESS DENIED BY DEED
 LIGHTS
 20,000 LUMEN (MERCURY VAPOR)
 20,000 LUMEN (MERCURY VAPOR) AMBER
 4000 LUMEN INCANDESCENT
 DELINEATORS

Lighting will be installed by the City of Colorado Springs per agreement with the Department.

CURVE DATA

	Δ	D	T	L	R	E
A	7°00'	2°00'	175.2'	350.0'	286.5'	5.4'
B	12°00'	3°00'	200.7'	400.0'	1910.0'	10.5'
C	11°00'	2°00'	275.9'	550.0'	286.5'	13.3'
D	17°00'	3°00'	285.5'	566.7'	1910.0'	21.2'
E	11°00'	3°00'	183.9'	366.7'	1910.0'	8.8'
F	78°21'	20°00'	233.5'	391.8'	286.5'	83.1'
G	90°00'		50.0'	78.5'	50.0'	
H	6°15'	3°00'	103.7'	207.2'	1910.0'	2.8'
I	83°36'	20°00'	256.2'	418.0'	286.5'	97.8'





END ABANDONMENT OF U.S. 24

