

FEDERAL ROAD DIVISION NO.	DISTRICT	PROJ. NO.	SHEET NO.	TOTAL SHEETS
9	2	I 25-2(44)150	1	

RIGHT OF WAY		REVISIONS
SO. ENTRANCE TO AIR ACADEMY		
CONVENTIONAL SIGNS		
CENTER LINE	PLAN SHEET	TITLE SHEET
RIGHT OF WAY LINE	R.O.W. MARKER	
COUNTY LINE		
TOWNSHIP OR RANGE LINE		
LAND LINES	SECTION LINE	1/4 SECTION LINE
	TITLE SHEET	PLAN SHEET
RAILROAD		
BARBED WIRE FENCE		
COMBINATION WIRE FENCE		
SNOW FENCE		
TELEPHONE & TELEGRAPH LINES		
POWER LINE		
DETOUR		
PRESENT ROAD (Plan Sheets)		

# COLORADO DEPARTMENT OF HIGHWAYS

PLAN AND PROFILE OF PROPOSED  
**FEDERAL AID PROJECT I 25-2(44)150**  
STATE HIGHWAY NO. + 25  
EL PASO COUNTY

INDEX OF SHEETS  
SHEET NO. 1 TITLE SHEET.  
2 PLAN SHEET

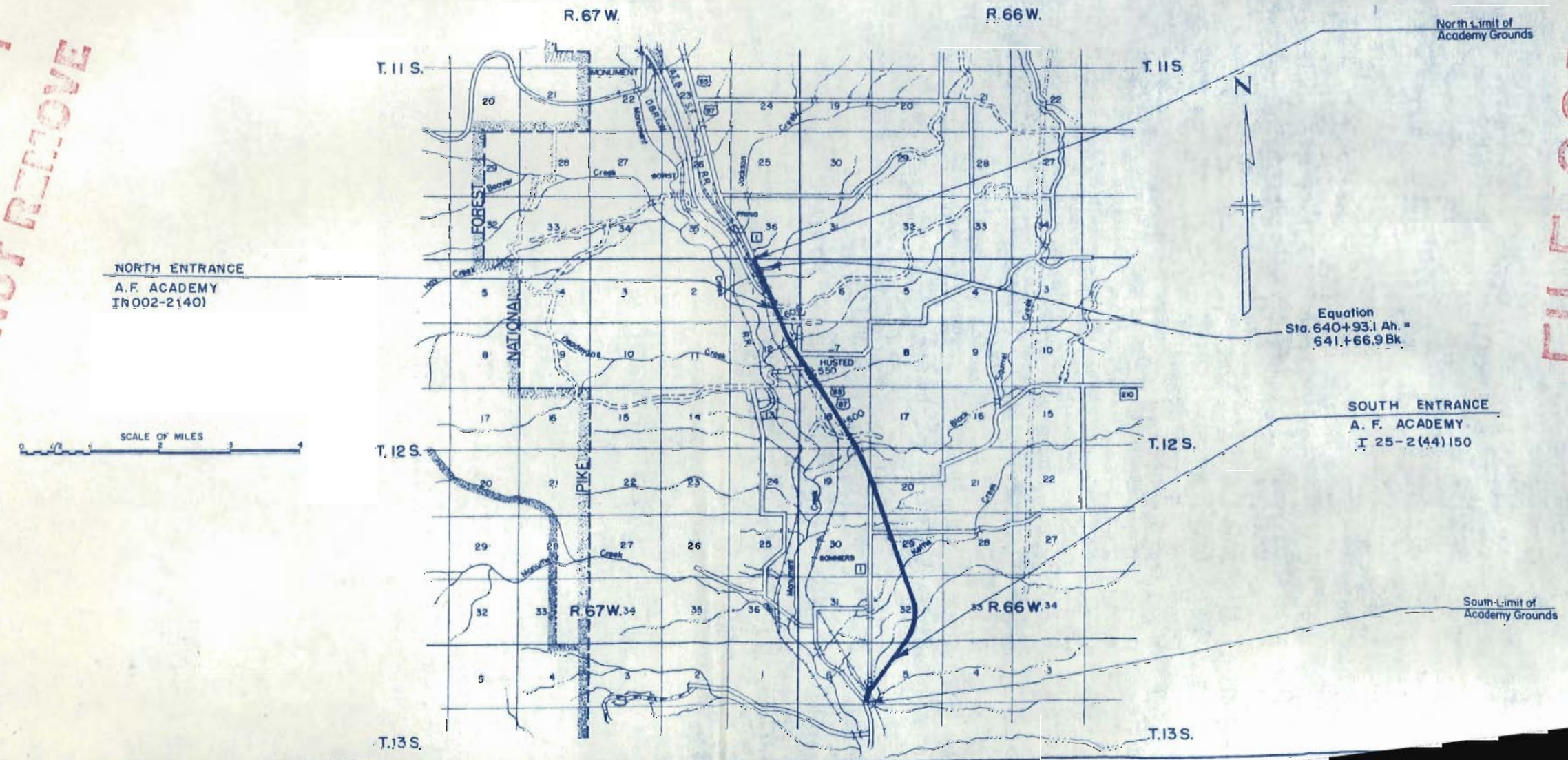
SCALES OF ORIGINAL DRAWINGS  
ON PLAN, 1 IN. = 100 FT.  
ON PROFILE, 1 IN. = 100 FT. HORIZONTAL  
1 IN. = 10 FT. VERTICAL  
GRADE LINE ON PROFILE IS SHOWN AS GRADE OF FINISHED ROAD  
GROSS LENGTH OF PROJECT  
NET LENGTH OF PROJECT

## RIGHT OF WAY

EASEMENT FOR HIGHWAY PURPOSES ONLY

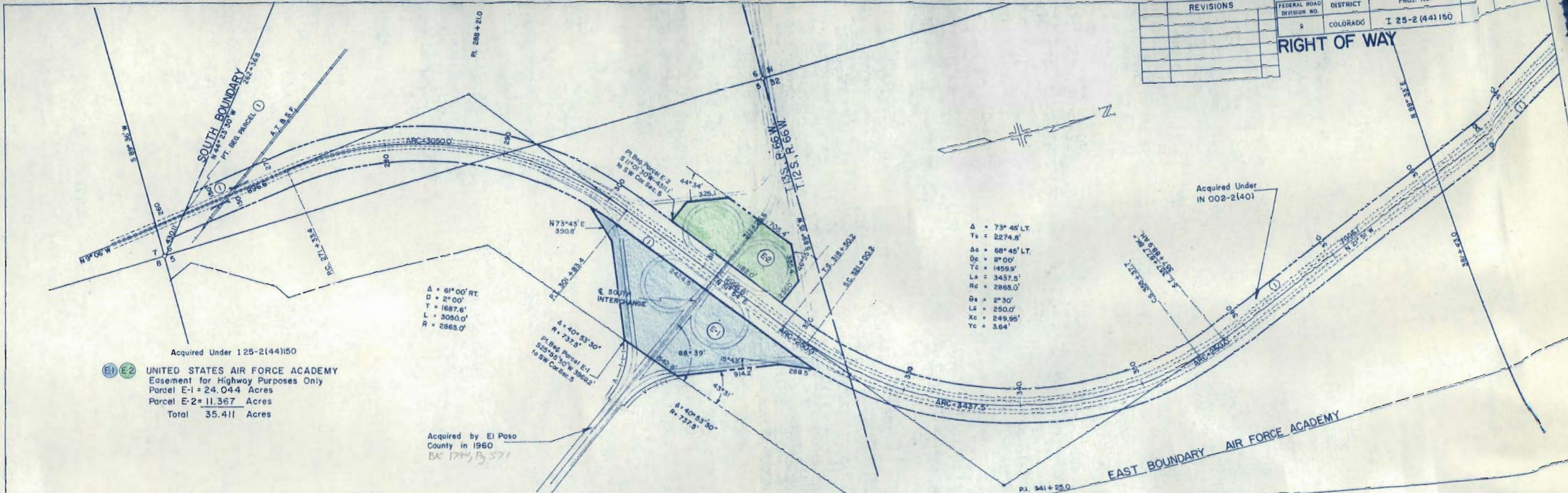
FILE COPY  
DO NOT REMOVE

FILE COPY  
DO NOT REMOVE



REVISIONS		FEDERAL ROAD DIVISION NO.	DISTRICT	PROJ. NO.	TOTAL SHEETS
		9	COLORADO	I 25-2 (44)150	

RIGHT OF WAY



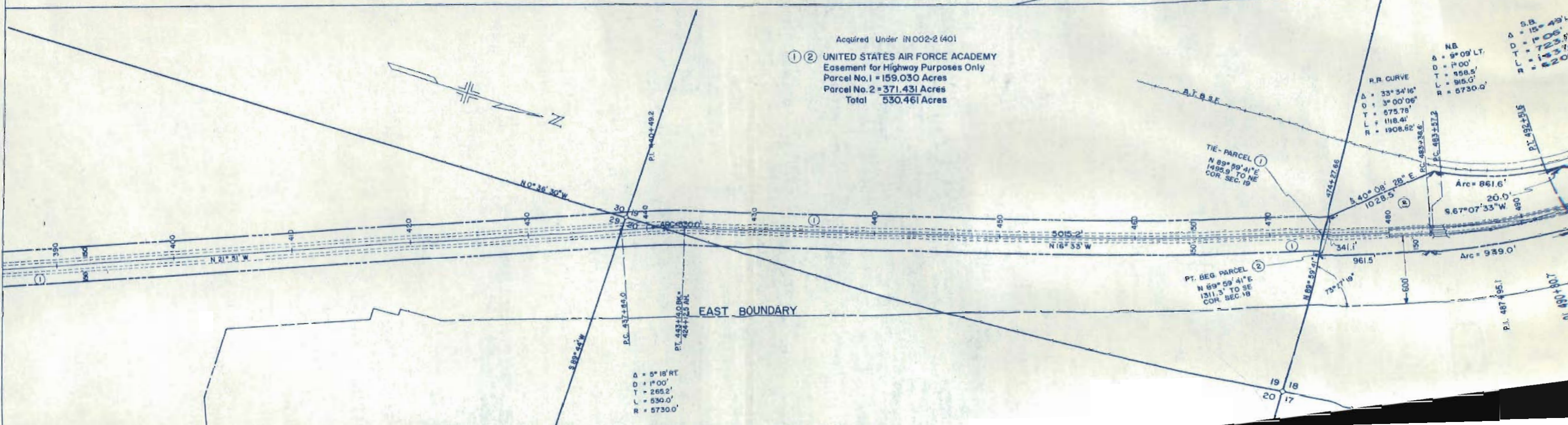
Acquired Under 125-2(44)150  
 (E1) (E2) UNITED STATES AIR FORCE ACADEMY  
 Easement for Highway Purposes Only  
 Parcel E-1 = 24.044 Acres  
 Parcel E-2 = 11.367 Acres  
 Total 35.411 Acres

Acquired by El Paso  
 County in 1960  
 BX 1714, B3, 571

Δ = 73° 45' LT  
 Ts = 2274.8'  
 Δc = 68° 45' LT  
 Dc = 2° 00'  
 Lc = 1459.9'  
 Tc = 3437.5'  
 Rc = 2865.0'  
 Δs = 2° 30'  
 Ls = 250.0'  
 Xc = 249.95'  
 Yc = 3.64'

Acquired Under  
 IN 002-2(40)

EAST BOUNDARY AIR FORCE ACADEMY



Acquired Under IN 002-2(40)  
 (1) (2) UNITED STATES AIR FORCE ACADEMY  
 Easement for Highway Purposes Only  
 Parcel No. 1 = 159.030 Acres  
 Parcel No. 2 = 371.431 Acres  
 Total 530.461 Acres

Δ = 9° 09' LT  
 D = 1° 00'  
 L = 958.5'  
 T = 916.0'  
 R = 5730.0'

TIE-PARCEL (1)  
 N 89° 59' 41" E  
 1498.9' TO NE  
 COR. SEC. 19

PT. BEG PARCEL (2)  
 N 89° 59' 41" E  
 1311.3' TO SE  
 COR. SEC. 19

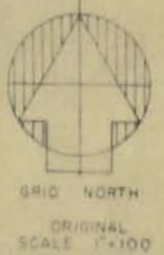
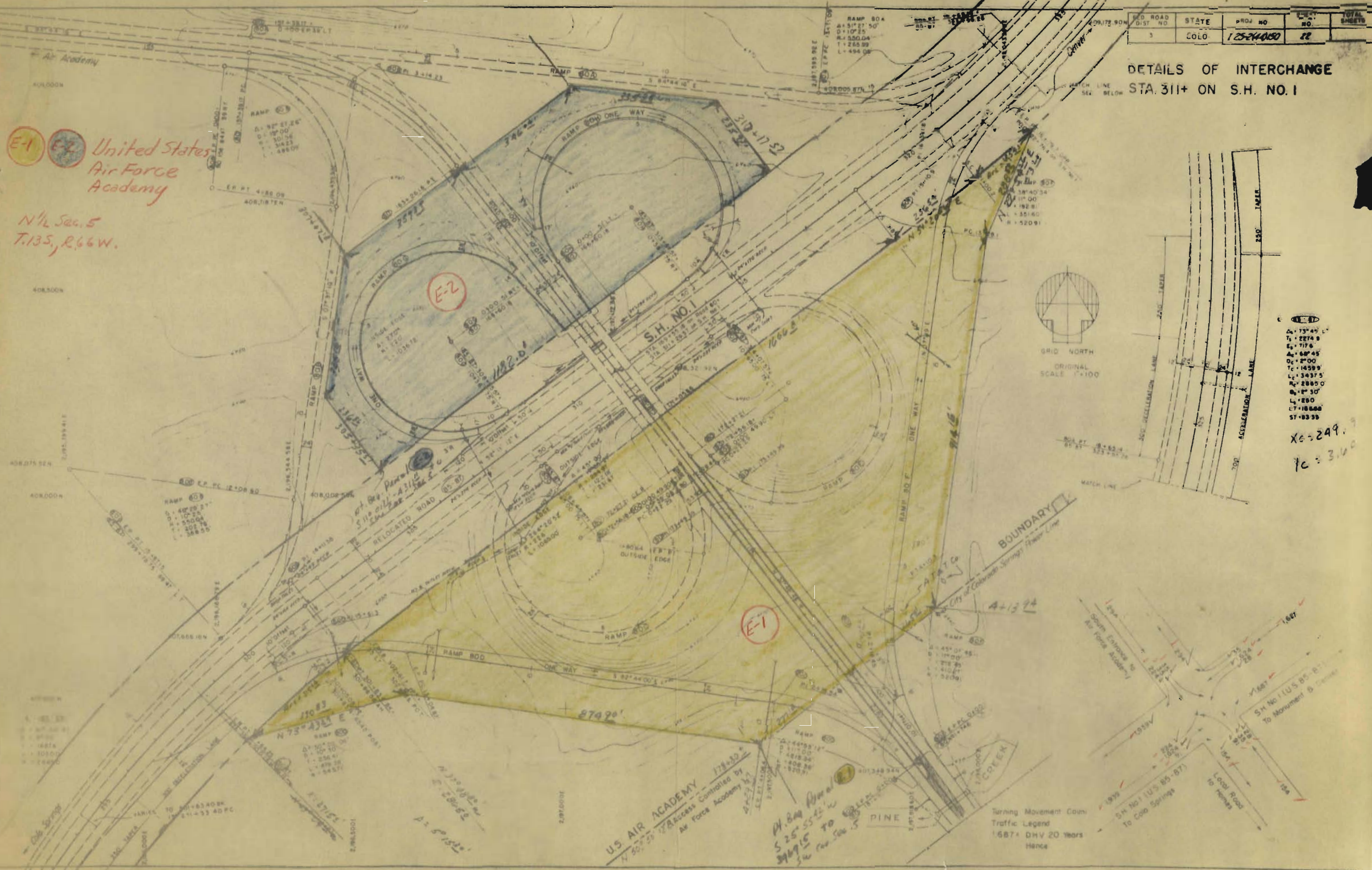
Δ = 5° 18' RT  
 D = 1° 00'  
 T = 265.2'  
 L = 530.0'  
 R = 5730.0'

T. 12 S., R. 66 W.

ROAD DIST NO	STATE	PROJ NO	SHEET NO	TOTAL SHEETS
3	COLO	12524080	22	

DETAILS OF INTERCHANGE  
STA. 311+ ON S.H. NO. 1

**E-1** **E-2** United States  
Air Force  
Academy  
  
N 1/2 Sec. 5  
T. 13S, R. 66W.



TYPE	STATION	PC	PT	PI	PG	PG+1	PG+2	PG+3	PG+4	PG+5	PG+6	PG+7	PG+8	PG+9	PG+10
ACC. DECELERATION LANE	210														
ACC. ACCELERATION LANE	250														

$\Delta = 73^\circ 45'$  L  
 $T_1 = 2274.8$   
 $E_1 = 717.6$   
 $\Delta = 68^\circ 45'$   
 $O_1 = 2^\circ 00'$   
 $T_2 = 1459.5$   
 $L_1 = 3437.5$   
 $R_1 = 2885.0$   
 $O_2 = 2^\circ 30'$   
 $L_2 = 250$   
 $L_T = 18888$   
 $ST = 83.35$   
  
 $XG = 249.7$   
 $YC = 316.0$

US AIR ACADEMY  
 Access Controlled by  
 Air Force Academy  
 47-23 1/2  
 47-23 1/2

Turning Movement Count  
 Traffic Legend  
 1987+ DHV 20 Years  
 Hence

