

DEPARTMENT OF HIGHWAYS STATE OF COLORADO

PLAN AND PROFILE OF PROPOSED FEDERAL AID PROJECT NO. I 25-2 (68) 117 STATE HIGHWAY NO. 1 EL PASO COUNTY RIGHT OF WAY

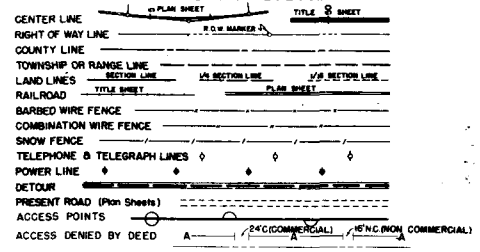
SCALES OF ORIGINAL DRAWINGS
 ON PLAN, 1 IN. = 100 FT.
 ON PROFILE, 1 IN. = 100 FT. HORIZONTAL
 1 IN. = 10 FT. VERTICAL
 GRADE LINE ON PROFILE IS SHOWN AS GRADE OF FINISHED ROAD
 GROSS LENGTH OF PROJECT -
 NET LENGTH OF PROJECT -

V-FILE

REVISIONS		FEDERAL ROAD DIVISION NO.	DISTRICT	PROJ. NO.	SHEET NO.	TOT. SHE.
		9	COLORADO	I 25-2(68)117	1	

RIGHT OF WAY SOUTH OF FOUNTAIN

CONVENTIONAL SIGNS

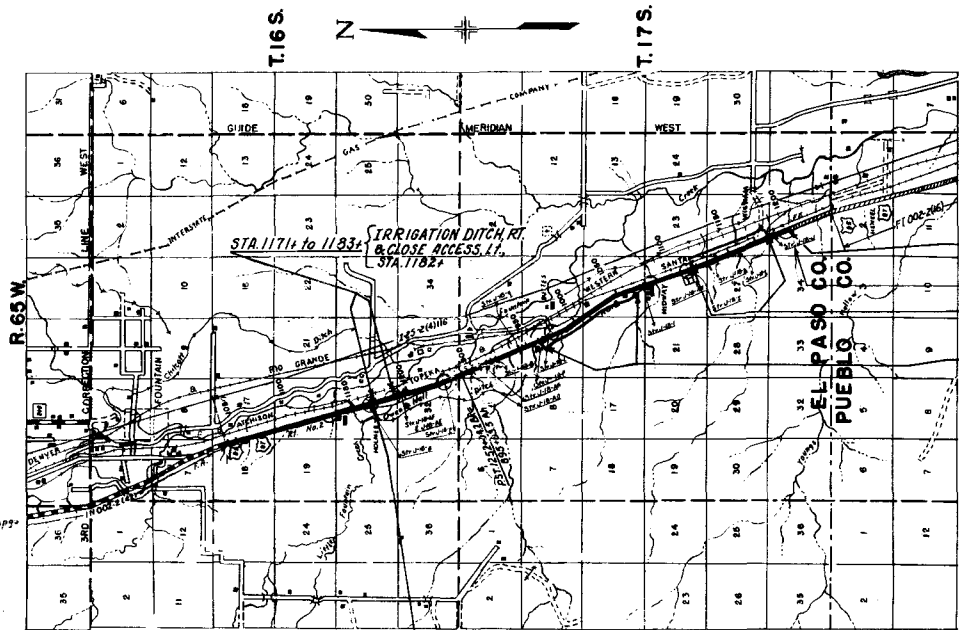


NOTE:
 R.O.W. ON THIS PROJECT CONSISTS OF
 CLOSING ROW OPENINGS AND ACQUISITION
 OF TWO (2) PARCELS

INDEX OF SHEETS

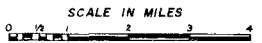
SHEET NO. 1	TITLE SHEET
2	TABULATION SHEET
3-12	PLAN AND PROFILE SHEETS

FILE COPY - DO NOT
 REMOVE FROM OFFICE



STA. 1203+00- END I-25-2(68)117-
 STA. 1203+00 on I-25-2(4)116
 STA. 1203+ - CLOSE ACCESS, RT.
 STA. 1123+ to 1185+ - FRONTAGE ROAD, LT.
 STA. 969+ to 1065+ - FRONTAGE ROAD, RT.

STA. 1171+00-BEGIN I-25-2(68)117-
 STA. 1171+00 on I-25-2(4)116



FILE COPY - DO NOT
 REMOVE FROM OFFICE

V-FILE

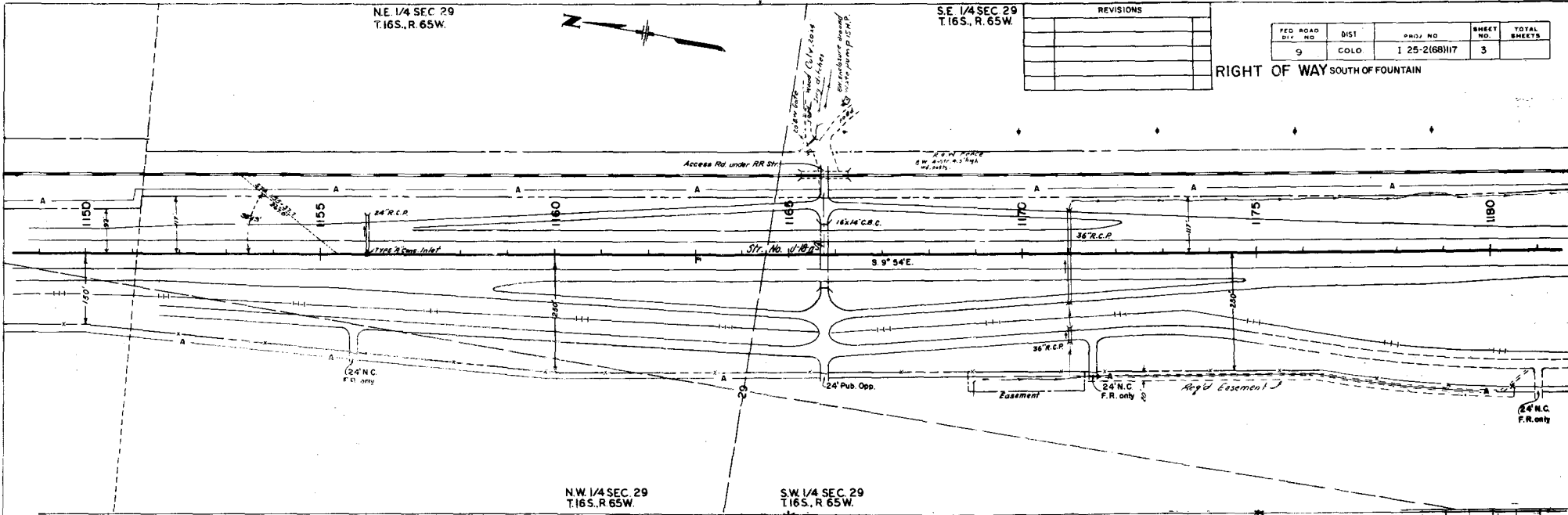
NE 1/4 SEC. 29
T.16S., R. 65W.

SE 1/4 SEC. 29
T.16S., R. 65W.

REVISIONS

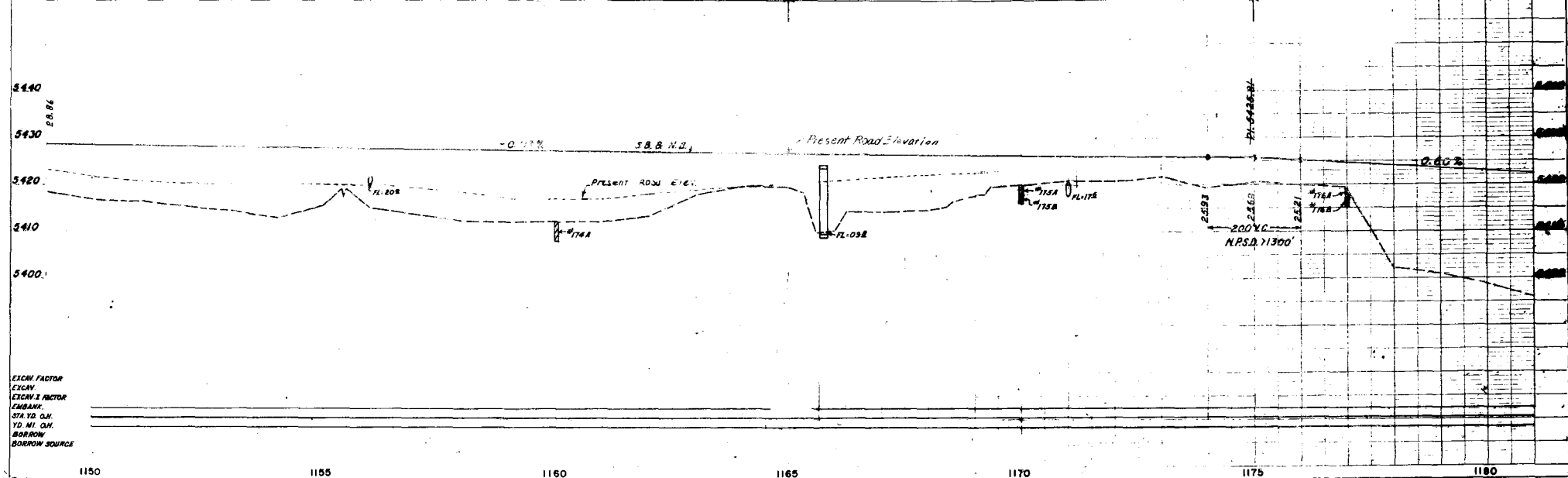
FED. ROAD DIV. NO.	DIST.	PROJ. NO.	SHEET NO.	TOTAL SHEETS
9	COLO.	1 25-2(68)117	3	

RIGHT OF WAY SOUTH OF FOUNTAIN



NW 1/4 SEC. 29
T.16S., R. 65W.

SW 1/4 SEC. 29
T.16S., R. 65W.



EXCH. FACTOR
 EXCH. FACTOR
 EXCH. 2 FACTOR
 EMBANK.
 STA. YD. CH.
 YD. MI. CH.
 BORROW SOURCE

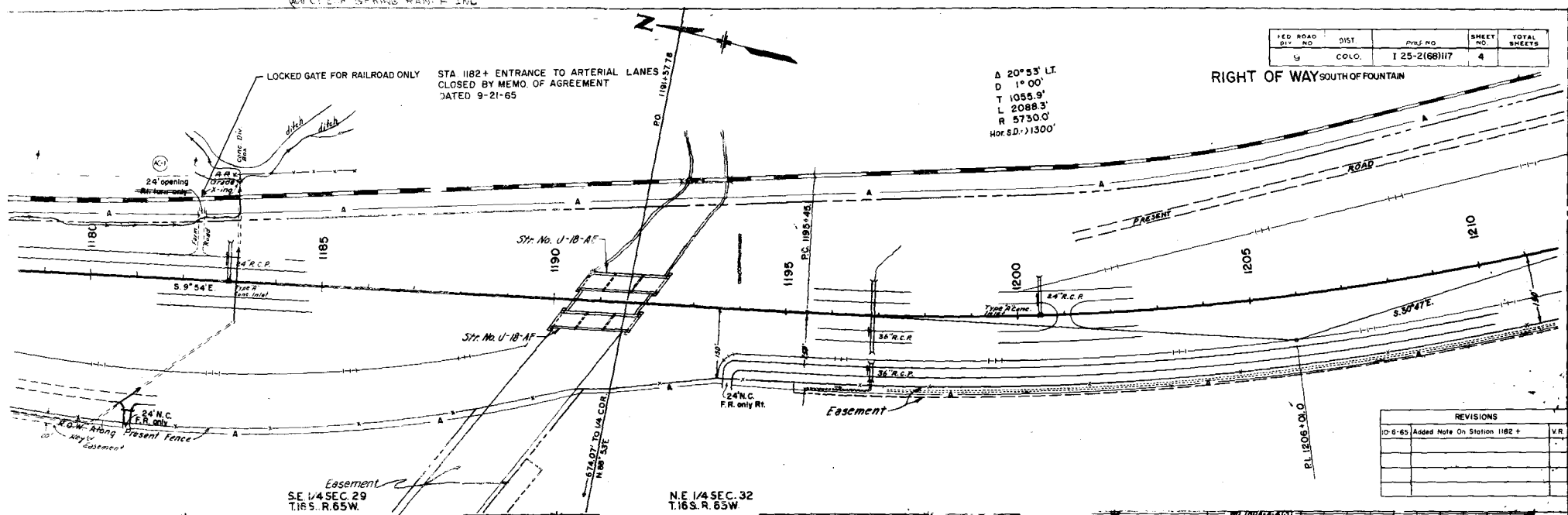
1150 1155 1160 1165 1170 1175 1180

RED ROAD DIV. NO.	DIST.	PLAT. NO.	SHEET NO.	TOTAL SHEETS
5	COLO.	I 25-2(68)117	4	

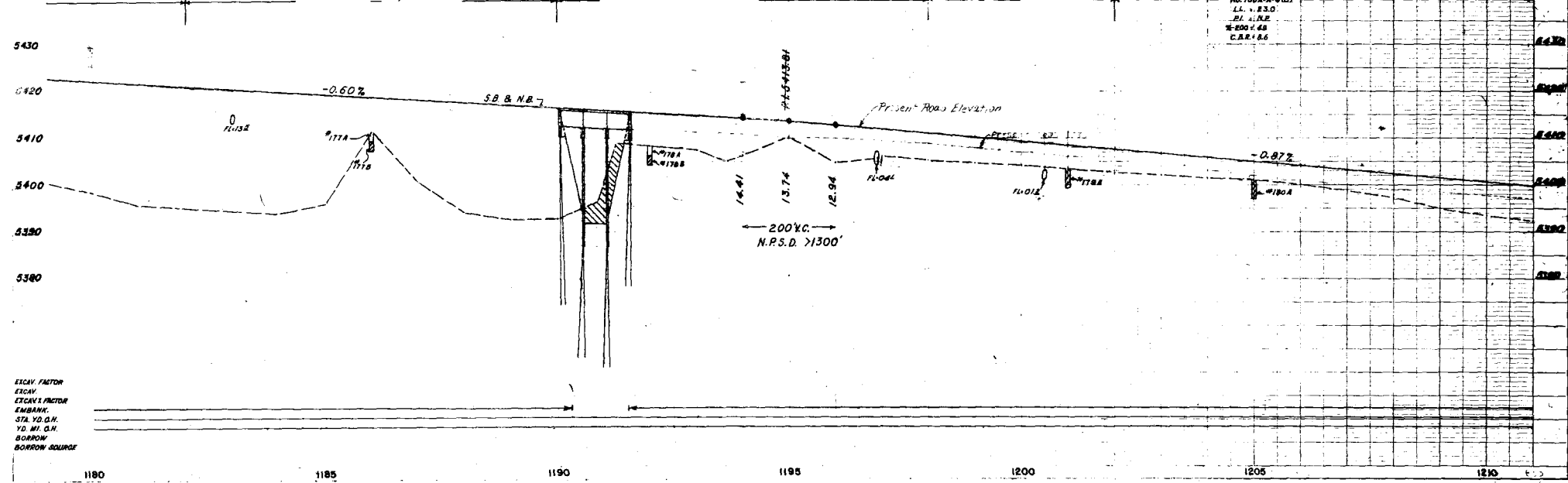
RIGHT OF WAY SOUTH OF FOUNTAIN

A 20° 53' LT.
 D 1° 00'
 T 1055.9'
 L 2088.3'
 R 5730.0'
 Hor. S.D. > 1300'

LOCKED GATE FOR RAILROAD ONLY
 STA 1182+ ENTRANCE TO ARTERIAL LANES
 CLOSED BY MEMO. OF AGREEMENT
 DATED 9-21-65



REVISIONS	
0-6-65	Added Note On Station 1182+



EXCAV. FACTOR
 EXCAV.
 EXCAV. FACTOR
 EMBANK.
 STA. YD. O.H.
 YD. MI. O.H.
 BORROW
 BORROW SOURCE

1180 1185 1190 1195 1200 1205 1210

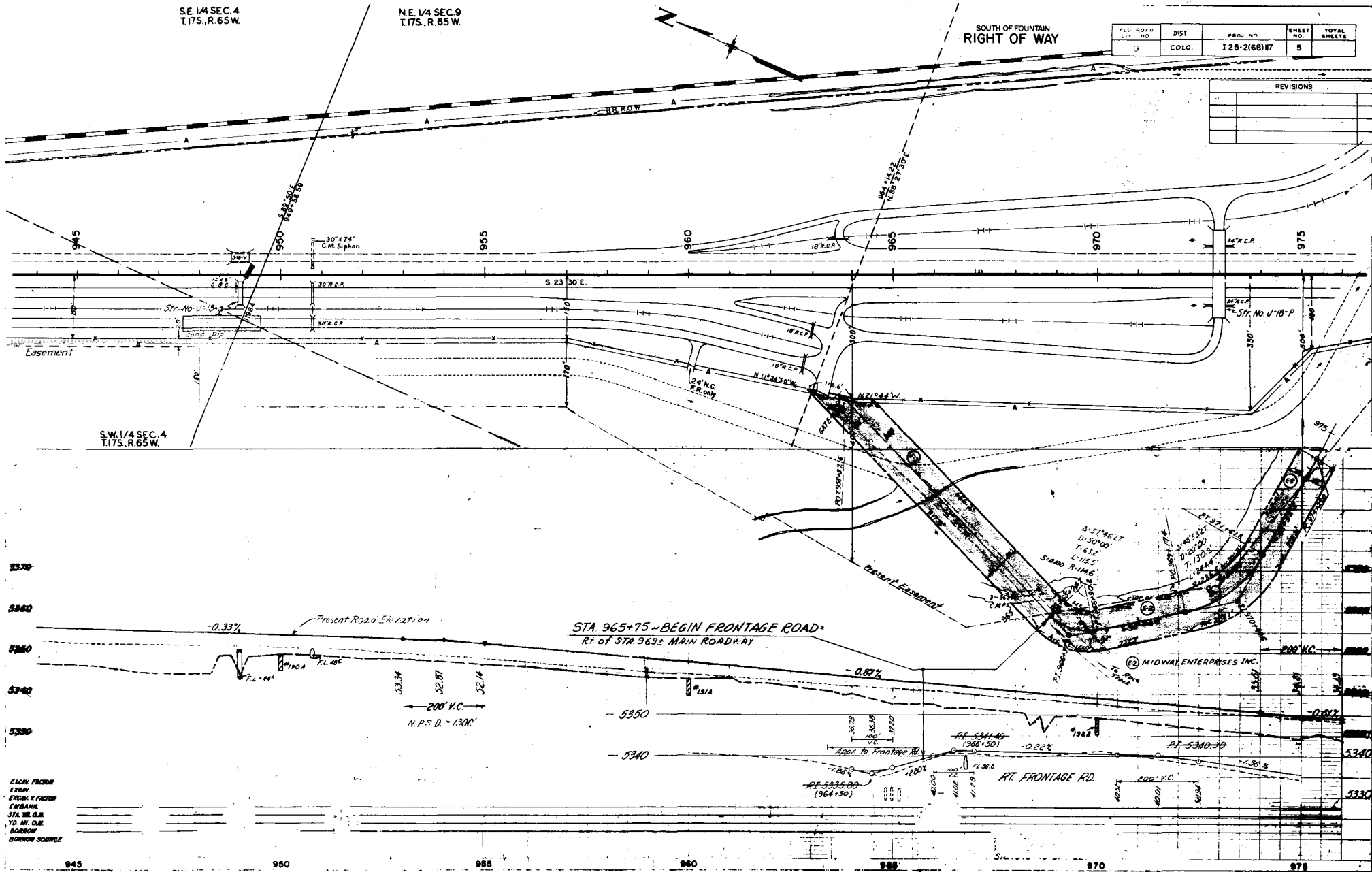
SE 1/4 SEC. 4
T.17S., R. 65W.

NE 1/4 SEC. 9
T.17S., R. 65W.

SOUTH OF FOUNTAIN
RIGHT OF WAY

FED. ROAD DIST. NO.	DIST.	PROJ. NO.	SHEET NO.	TOTAL SHEETS
3	COLO.	125-2(68)17	5	

NO.	DESCRIPTION



5370
5360
5350
5340
5330

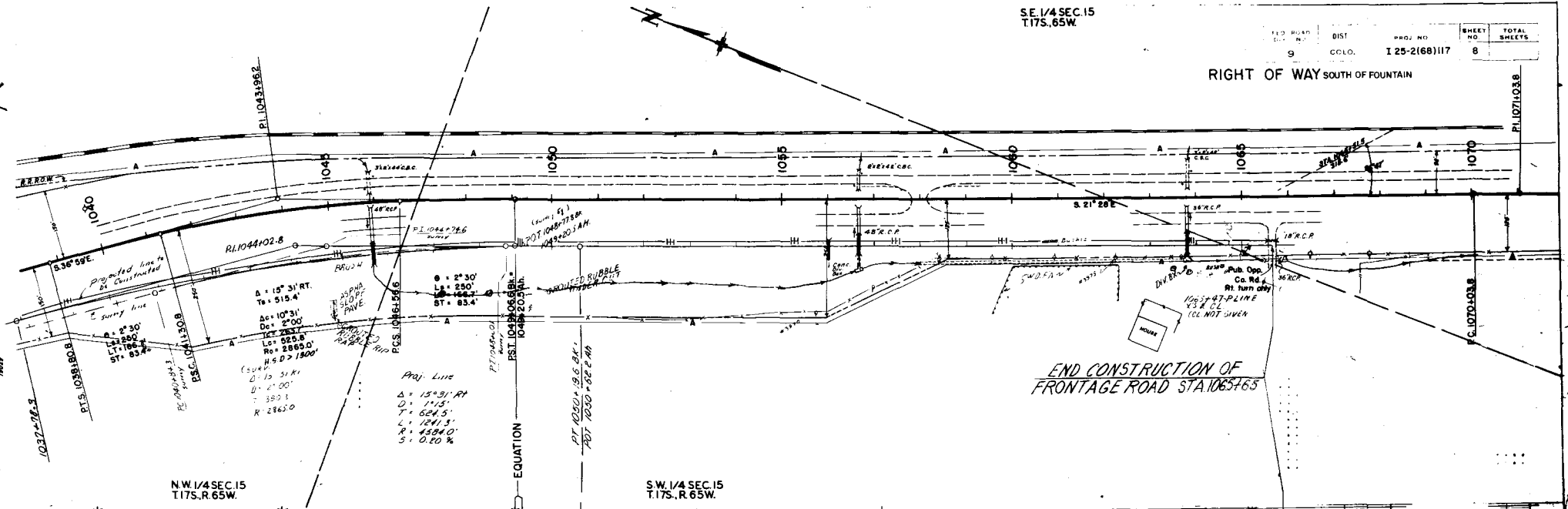
ELEV. FACTOR
 ELEV. X FACTOR
 CURVATURE
 STA. 100' O.C.
 YD. M. O.C.
 BORROW
 BORROW SOURCE

945 950 955 960 965 970 975

SE 1/4 SEC. 15
T. 17S. R. 65W.

ED. ROAD DIST.	DIST.	PROJ. NO.	SHEET NO.	TOTAL SHEETS
9	CCLO.	I 25-2(68)117	8	

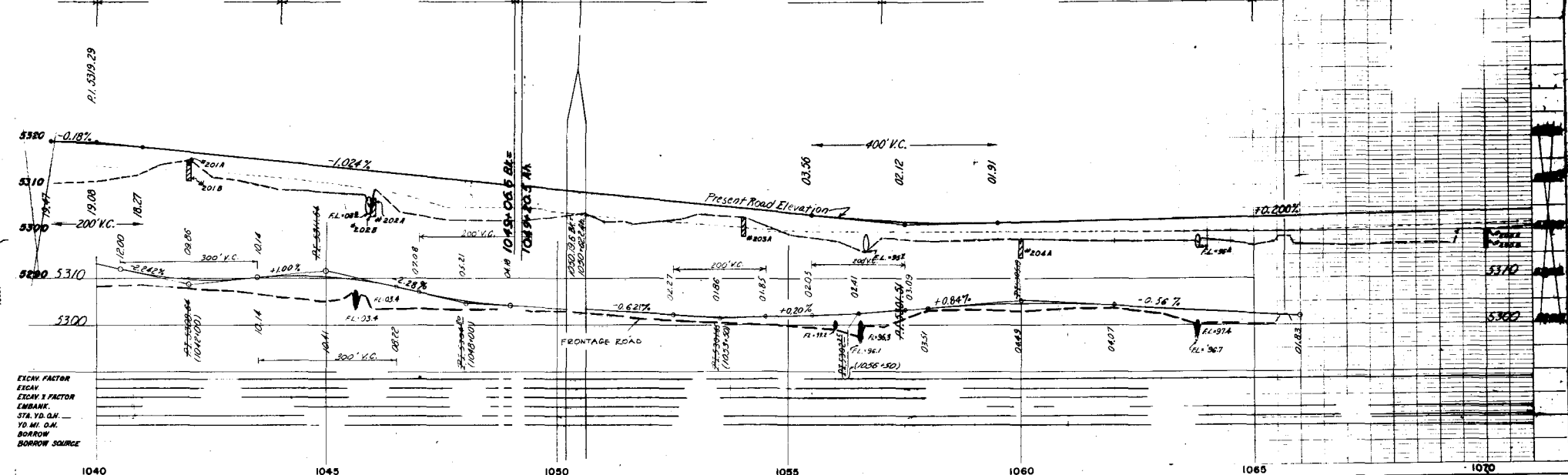
RIGHT OF WAY SOUTH OF FOUNTAIN



END CONSTRUCTION OF FRONTAGE ROAD STA. 1065+65

NW 1/4 SEC. 15
T. 17S. R. 65W.

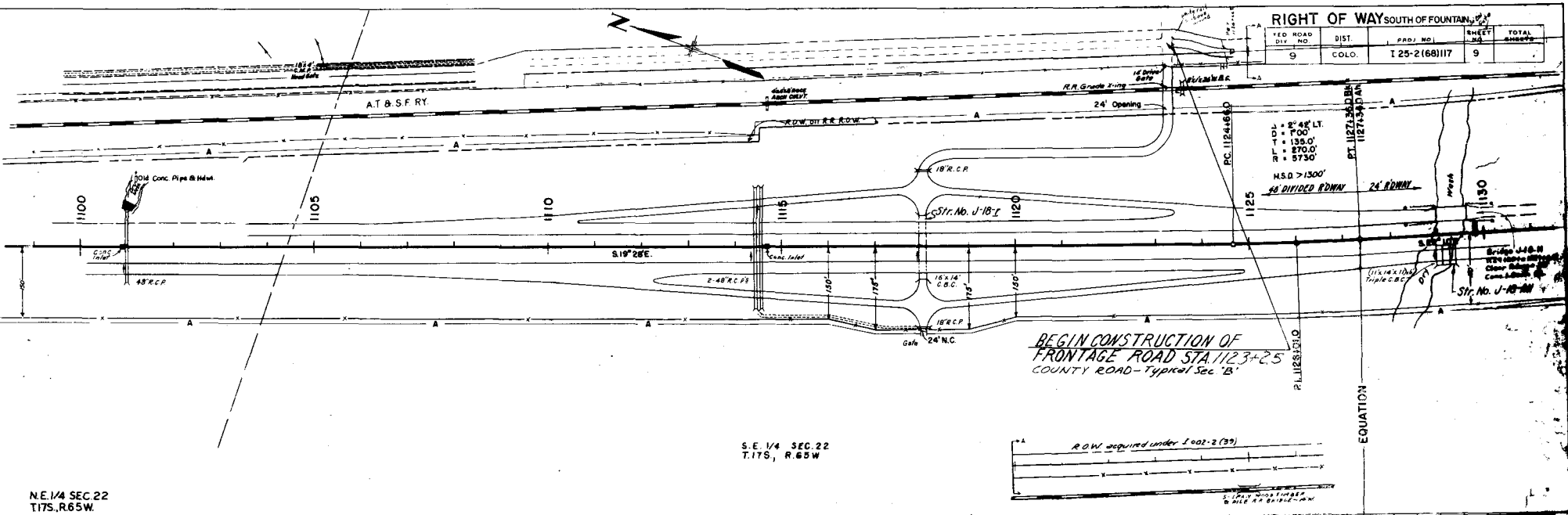
SW 1/4 SEC. 15
T. 17S. R. 65W.



EXCAV. FACTOR
 EXCAV. FACTOR
 EMBANK.
 STA. YD. Q.M.
 YD. MI. Q.M.
 BORROW
 BORROW SOURCE

1040 1045 1050 1055 1060 1065 1070

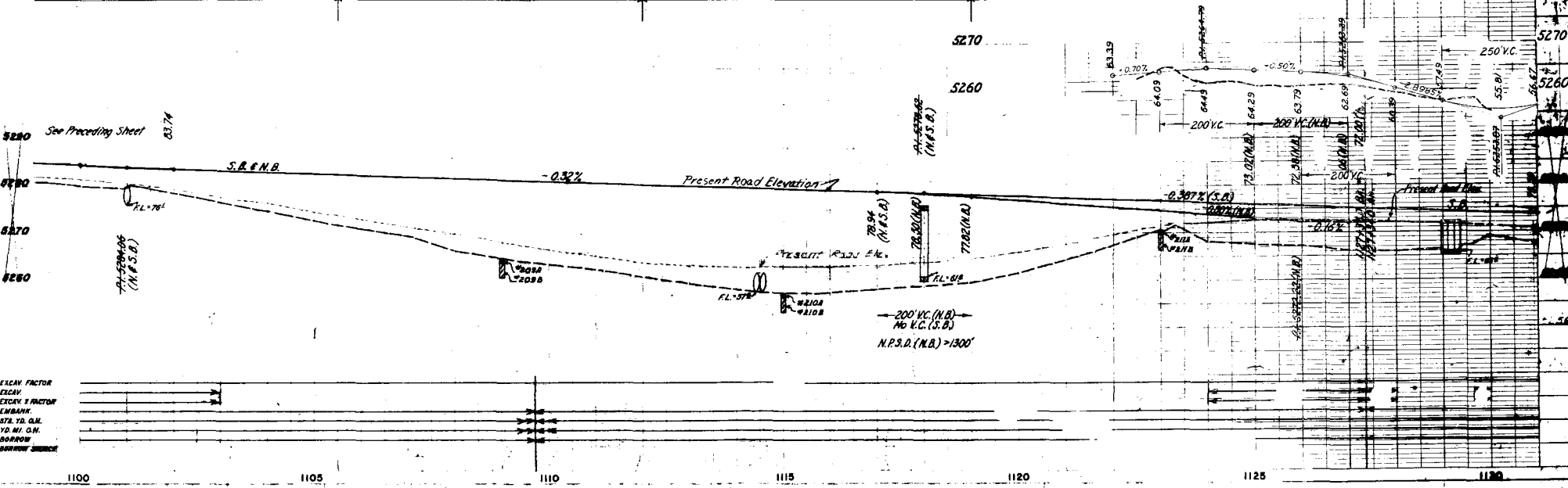
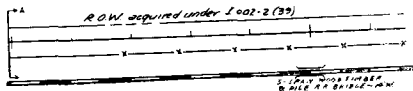
FED ROAD DIV. NO.	DIST.	PROJ. NO.	SHEET NO.	TOTAL SHEETS
9	COLO.	125-2(68)117	9	



BEGIN CONSTRUCTION OF FRONTAGE ROAD STA. 1123+25 COUNTY ROAD-Typical Sec 'B'

S.E. 1/4 SEC. 22 T.17S, R.65W

N.E. 1/4 SEC. 22 T.17S, R.65W

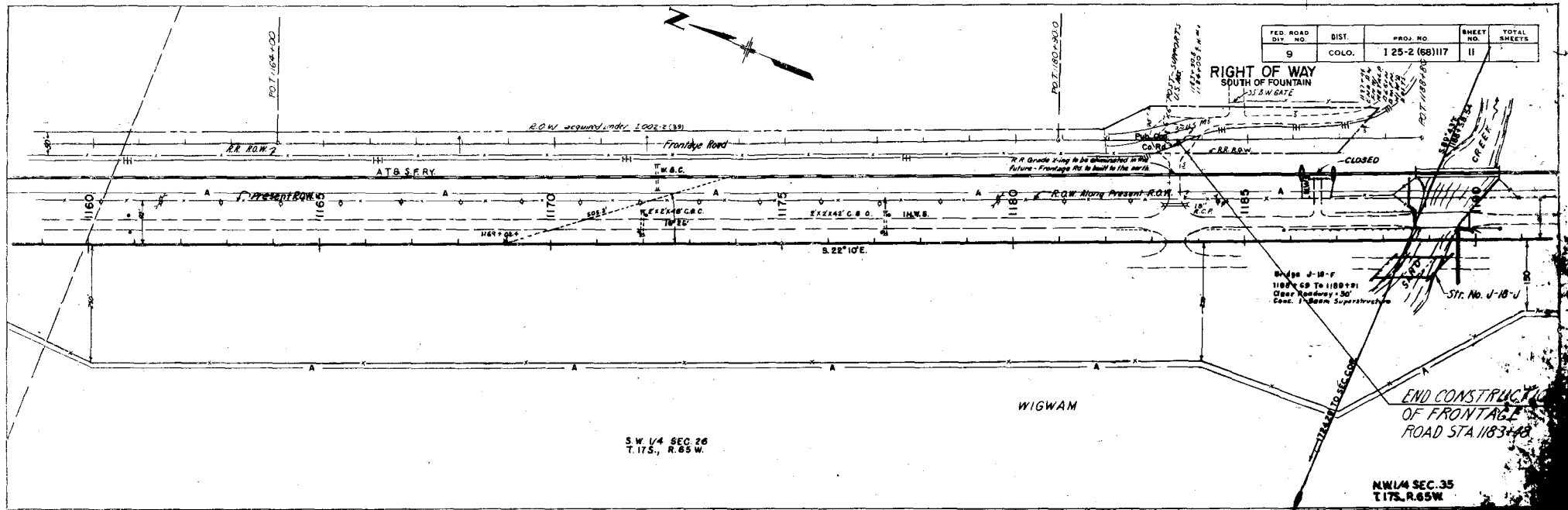


EXCAV. FACTOR
 EXCAV. FACTOR
 EMBANK.
 STA. TO O.M.
 TO M.I. O.M.
 BARROW SURFACE

EQUATION

FED. ROAD DIV. NO.	DIST.	PROJ. NO.	SHEET NO.	TOTAL SHEETS
9	COLO.	125-2 (68)117	11	

RIGHT OF WAY SOUTH OF FOUNTAIN
33 S.W. GATE

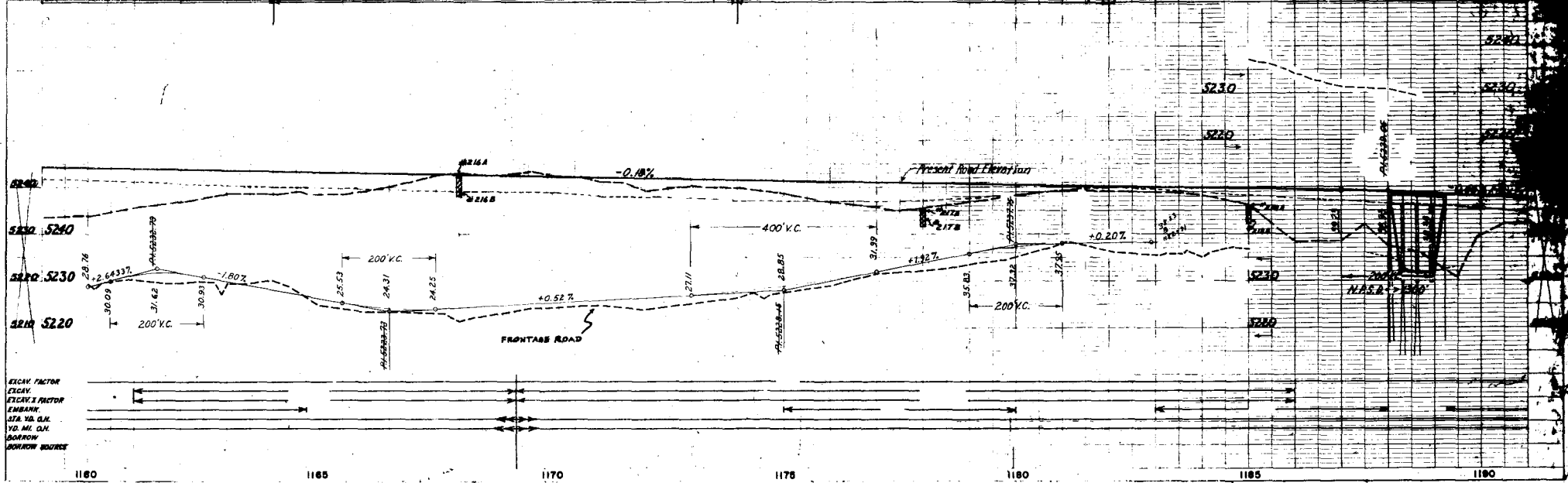


S.W. 1/4 SEC. 26
T. 17S., R. 65W.

WIGWAM

N.W. 1/4 SEC. 35
T. 17S., R. 65W.

END CONSTRUCTION OF FRONTAGE ROAD STA 1183+48



EXCAV. FACTOR
EXCAV.
EMBANK. FACTOR
EMBANK.
STA. NO. O.H.
YD. MI. O.H.
BORROW
BORROW SOURCE

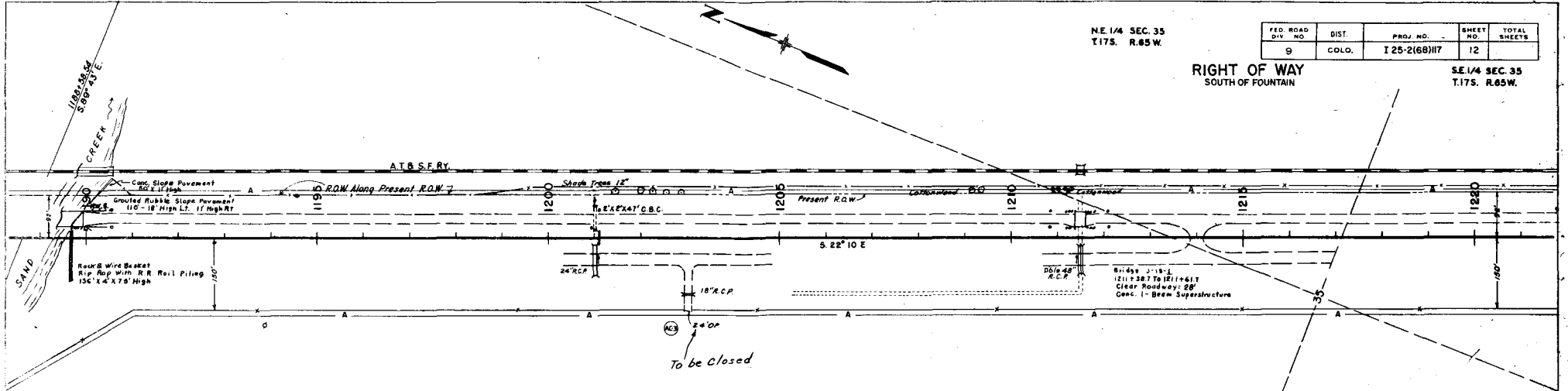
1180 1185 1190 1175 1180 1185 1190

N.E. 1/4 SEC. 35
T.17S. R.65W.

FED. ROAD DIV. NO.	DIST.	PROJ. NO.	SHEET NO.	TOTAL SHEETS
9	COLO.	I 25-2(68)H7	12	

RIGHT OF WAY
SOUTH OF FOUNTAIN

S.E. 1/4 SEC. 35
T.17S. R.65W.

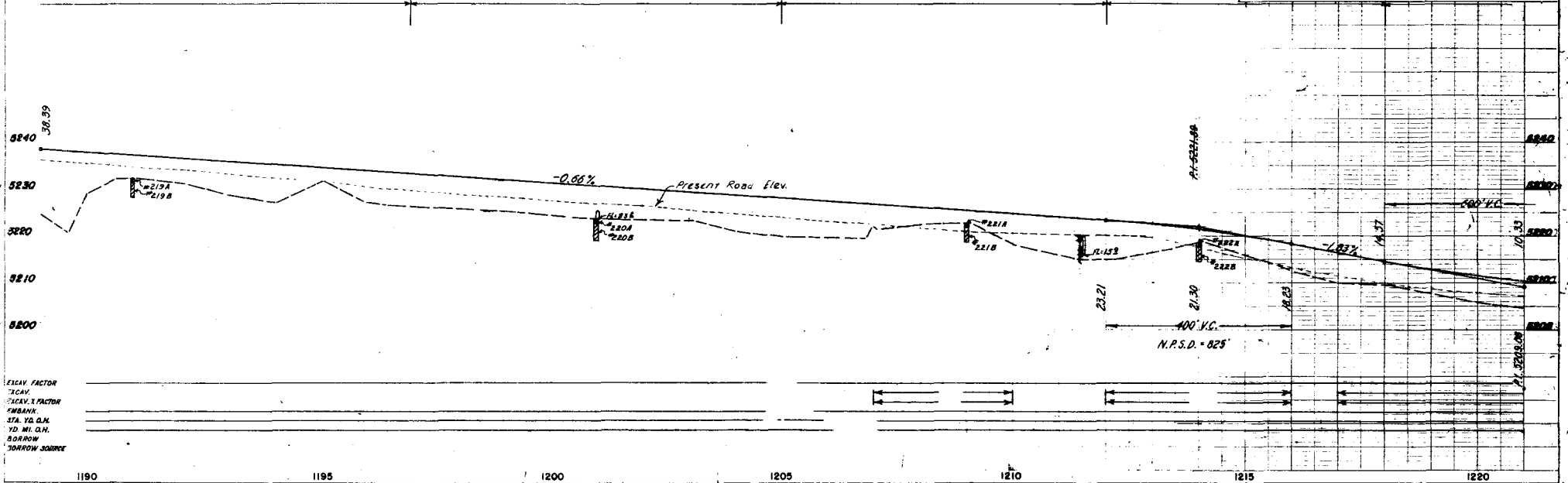


N.W. 1/4 SEC. 35
T.17S. R.65W.

W.T. WARD, TIMOTHY T. WARD
WILLIAM T. WARD III, J.T.

REVISIONS	

S.W. 1/4 SEC. 35
T.17S. R.65W.



ELEV. FACTOR
T.CAV.
S.CAV. X FACTOR
SUBANK
STA. YD. G.L.
YD. MI. G.H.
BORROW
BORROW SOURCE