

R.O.W. Purchased under I 25-3(3)258

FEDERAL ROAD DISTRICT NO.	DIVISION	PROJ. NO.	SHEET NO.	TOTAL SHEETS
9	COLORADO	I 25-3(35)258	1	1

COLORADO DEPARTMENT OF HIGHWAYS

INDEX OF SHEETS
SEE SHEET NO. 2

PLAN AND PROFILE OF PROPOSED FEDERAL AID PROJECT NO. I 25-3(35)258 STATE HIGHWAY NO. 185 LARIMER COUNTY

SCALES OF ORIGINAL DRAWINGS

ON PLAN, 1 IN. = 100 FT.
ON PROFILE, 1 IN. = 100 FT. HORIZONTAL
1 IN. = 10 FT. VERTICAL

GRADE LINE ON PROFILE IS SHOWN AS GRADE OF FINISHED ROAD
GROSS LENGTH OF PROJECT 45,956.6 FEET = 8.704 MILES
NET LENGTH OF PROJECT 45,600.9 FEET = 8.637 MILES

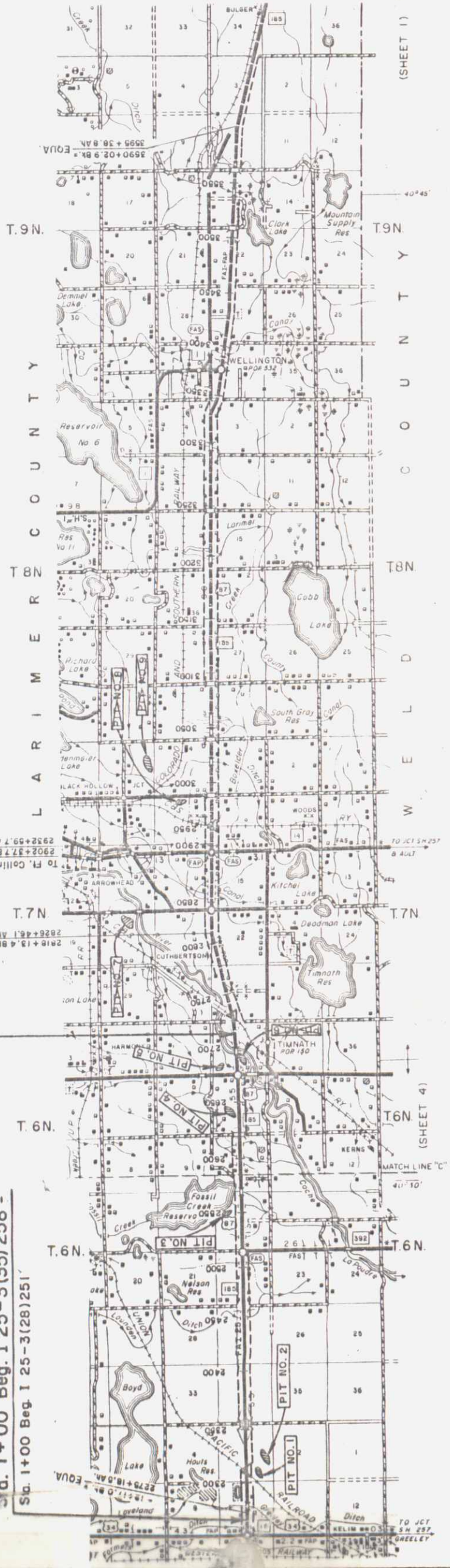
*Contractor - Hubner Const. Co.
Completion date - April 21, 1966.
Res. Engr - Lynn Hart*

STA. 2720+00 End I 25-3(35)258
STA. 2720+00 on F1 44(4)

Sta. 1+00 Beg. I 25-3(35)258 =
Sta. 1+00 Beg. I 25-3(28)251

CONVENTIONAL SIGNS

- CENTER LINE
- RIGHT OF WAY LINE
- COUNTY LINE
- TOWNSHIP OR RANGE LINE
- LAND LINES
- RAILROAD
- BARBED WIRE FENCE
- COMBINATION WIRE FENCE
- SNOW FENCE
- TELEPHONE & TELEGRAPH LINES
- POWER LINE
- DETOUR
- PRESENT ROAD (From Sheets)
- PROPOSED FRONTAGE ROADS
- CONTROL OF ACCESS
- ACCESS DENIED BY DEED



R. 68 W.
SEE SPECIAL PROVISIONS FOR NOTICE TO BIDDERS

COLORADO
DEPARTMENT OF HIGHWAYS
APPROVED: [Signature]
CHIEF ENGINEER
DATE: 11-22-65

DEPARTMENT OF COMMERCE
BUREAU OF PUBLIC ROADS
APPROVED: _____
DIVISION ENGINEER
DATE: _____

NOTE:
ALIGNMENT AND GRADES SHOWN ARE SUBJECT TO
MODIFICATION DURING CONSTRUCTION AFTER
APPROVAL BY THE DENVER OFFICE.

SOME DATA SHOWN ON PLANS IS OBTAINED FROM
BEST AVAILABLE TESTING LABORATORY INVESTIGATION;
THIS INFORMATION IS SHOWN FOR CONVENIENCE OF
THE CONTRACTOR AND THE DEPARTMENT DOES NOT
GUARANTEE THE ACCURACY OF THESE TESTS.
IF MATERIALS NOT CONFORMING TO THE DATA ON PLANS
ARE ENCOUNTERED DURING CONSTRUCTION THE ENGINEER'S
PLAN SHOWN ON PLANS WILL BE MODIFIED WHERE
NECESSARY TO SECURE DENSE, STABLE EMBANKMENTS.

POWER POLES OWNED BY PUDDLE VALLEY
E & A INC. BY PUBLIC SERVICE CO. OF COLO.
BY TELEPHONE POLES OWNED BY MOUNTAIN
STATES TELEPHONE CO. OF COLO.

STA. 1+00 m BEG. PROJ. NO. 125-3(35) 258 -
STA. 1+00 m BEG. PROJ. NO. 125-3(20) 251

NOTE:
FRONTAGE ROAD, PLAN
BY PROFILE SEE SHEETS
NO. 118-124

FOR DETAILS FOR CONCRETE LINED
DITCH, SEE DETAIL SHEET NO. 29

NOTE: TEMPORARY "A" EMBANKMENT
INCLUDES QUANTITIES
FOR REPAIRS,
CROSS ROADS.



SW 1/4 SEC 10
T 5N. R. 65W.

1+00+ REQ'D
IDENTIFICATION
SIGN, RT.

-0+00-6+
REMOVE ROAD
APPROACHES &
2-18" C.N.P.'S, RT.

SE 1/4 SEC 10
T 5N. R. 65W.

-6+00+2284+00
REQ'D FRONTAGE
ROAD, RT.

BEARING EQUATION

(R-1) 22" Water Line
(City of Greeley)

(R-2) -1+30 City of Greeley
36" Water Line.

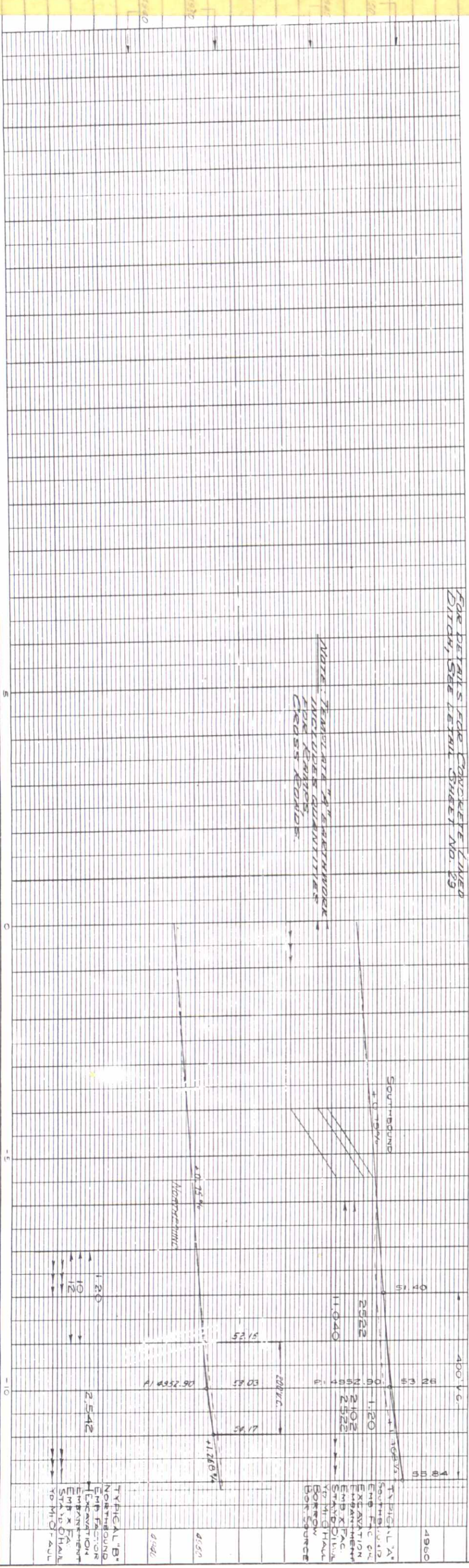
0+00-5+
REMOVE
TEMPORARY
APPROACH.

-7+00+2306+88.4
REQ'D FRONTAGE
ROAD, LT.

-9+00+
REQ'D 18" X 28"
R.C.P. SIDE
DRAIN TO ROAD
APPROACH TO
FRONTAGE
ROAD, LT.

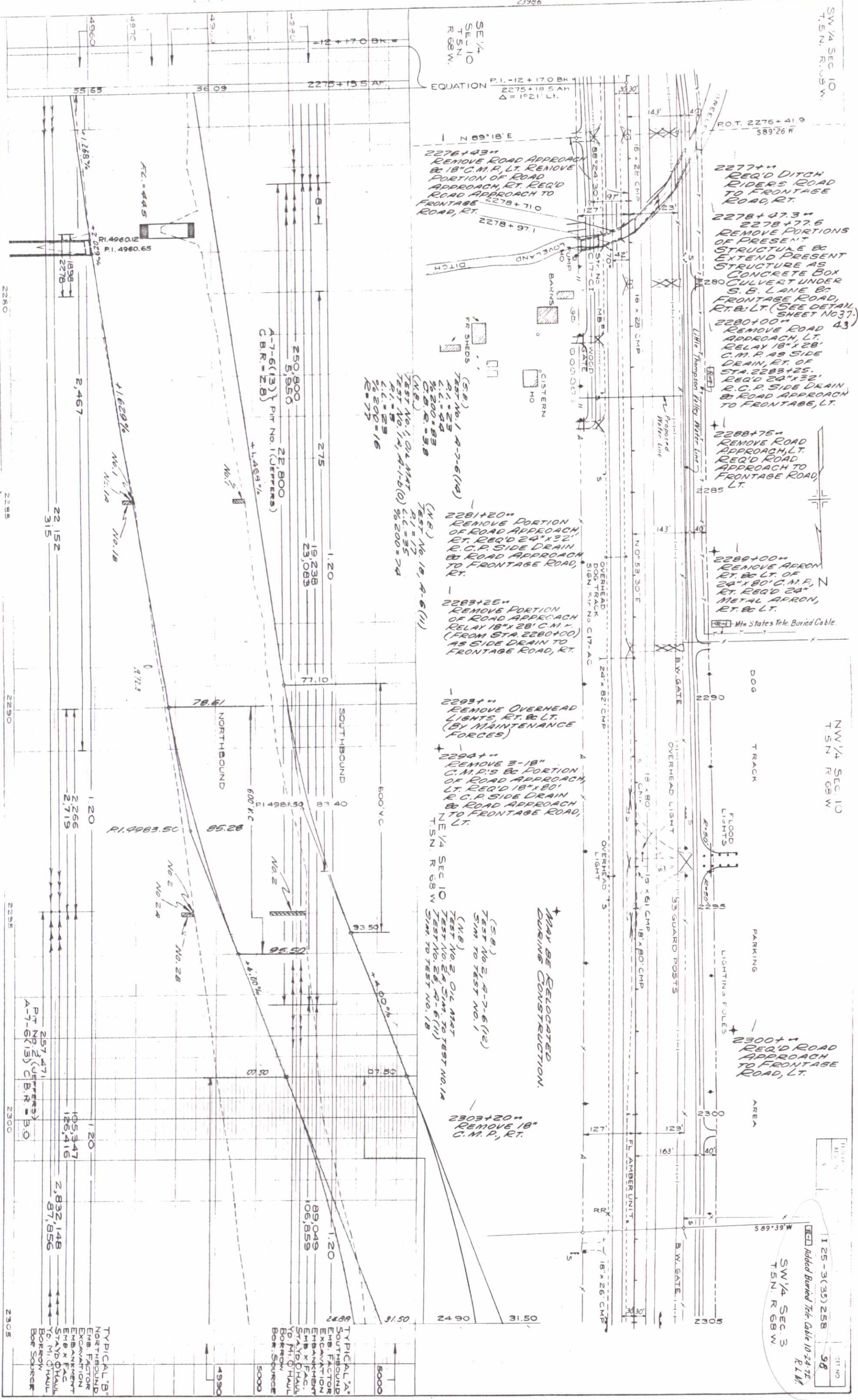
(R-1) 10-4-68 W.E.B.
(R-2) Added tele. cable, 10-24-72 R.L.M.
(R-3) Added water line 11-2-77, G.W.L.

FEDERAL ROAD REGION NO.	DIVISION	PROJECT NO.	SHEET NO.
9	COLORADO	125-3(35) 258	57



SW 1/4 SEC 10
 T. 5N. R. 68W.

NW 1/4 SEC 10
 T. 5N. R. 68W.



EQUATION P.I. = 12 + 170 BK +
 2275 + 18.5 AH
 $\Delta = 1^{\circ} 21' \text{ LT.}$

- 2277+00 REQ'D DITCH RIDERS ROAD TO FRONTAGE ROAD, RT.
- 2278+07.3 2278+77.6 REMOVE PORTIONS OF PRESENT STRUCTURE & EXTEND PRESENT STRUCTURE AS CONCRETE BOX CULVERT UNDER S. B. LANE & FRONTAGE ROAD, RT. & LT. (SEE DETAIL SHEET NO. 37)
- 2280+00 REMOVE ROAD APPROACH, LT. RELAY 18" x 28" C.M.P. AS SIDE DRAIN, ET. OF STA. 2283+25. REQ'D 24" x 32" R.C.P. SIDE DRAIN & ROAD APPROACH TO FRONTAGE, LT.
- 2288+75 REMOVE ROAD APPROACH, LT. REQ'D ROAD APPROACH TO FRONTAGE ROAD, LT.
- 2289+00 REMOVE APPROX. ET. & LT. OF 24" x 80" C.M.P. ET. REQ'D 24" METAL APRON, RT. & LT.

- 2281+20 REMOVE PORTION OF ROAD APPROACH, RT. REQ'D 24" x 32" R.C.P. SIDE DRAIN & ROAD APPROACH TO FRONTAGE ROAD, RT.
- 2283+25 REMOVE PORTION OF ROAD APPROACH RELAY 18" x 28" C.M.P. (FROM STA. 2280+00) AS SIDE DRAIN TO FRONTAGE ROAD, RT.

- 2293+00 REMOVE OVERHEAD LIGHTS, RT. & LT. (BY MAINTENANCE FORCES)
- 2294+00 REMOVE 3-18" C.M.P.'S & PORTION OF ROAD APPROACH, LT. REQ'D 18" x 80" R.C.P. SIDE DRAIN & ROAD APPROACH TO FRONTAGE ROAD, LT.

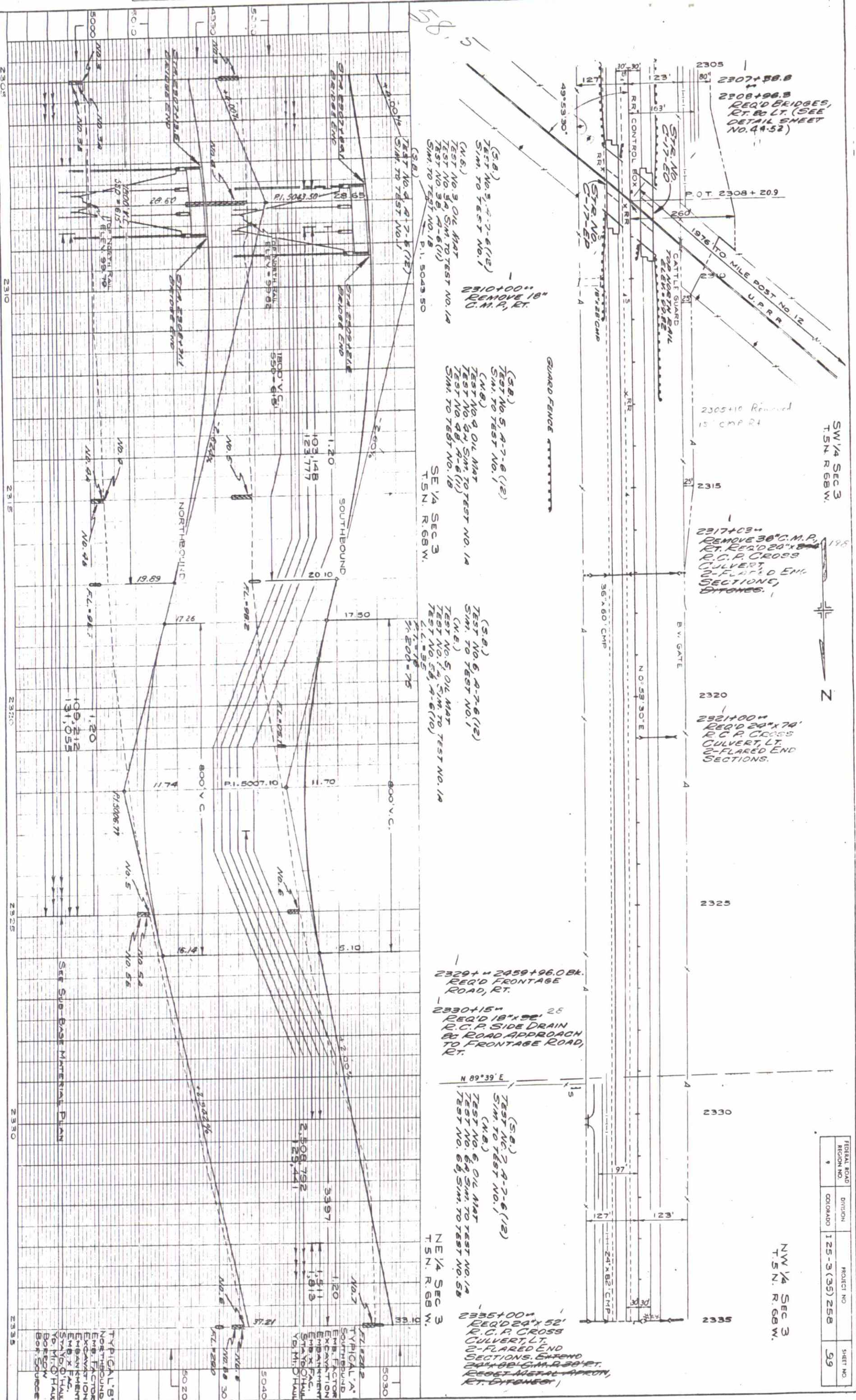
- 2303+20 REMOVE 18" C.M.P., RT.

Station	Notes
2278+00	Remove Road Approach & 18" C.M.P. LT. Remove Portion of Road Approach, RT. Req'd Road Approach to Frontage Road, RT.
2280+00	Remove Road Approach, LT. Relay 18" x 28" C.M.P. as Side Drain, Et. of Sta. 2283+25. Req'd 24" x 32" R.C.P. Side Drain & Road Approach to Frontage, LT.
2288+75	Remove Road Approach, LT. Req'd Road Approach to Frontage Road, LT.
2289+00	Remove Approx. Et. & Lt. of 24" x 80" C.M.P. Et. Req'd 24" Metal Apron, Rt. & Lt.
2293+00	Remove Overhead Lights, Rt. & Lt. (By Maintenance Forces)
2294+00	Remove 3-18" C.M.P.'s & Portion of Road Approach, Lt. Req'd 18" x 80" R.C.P. Side Drain & Road Approach to Frontage Road, Lt.
2303+20	Remove 18" C.M.P., Rt.

TYPICAL 'A' SOUTHBOUND
 Emb. Factor
 Excavation
 Embankment
 Emb. x Fac.
 Stray D. Haul
 Yd. M. Haul
 Borrow
 Bot. Source

TYPICAL 'B' NORTHBOUND
 Emb. Factor
 Excavation
 Embankment
 Emb. x Fac.
 Stray D. Haul
 Yd. M. Haul
 Borrow
 Bot. Source

Added Buried Tele. Cable 10-24-72
 SW 1/4 Sec. 3
 T. 5N. R. 68W.
 98
 P.L.M.



(S.B.)
 TEST NO. 3 OIL MAT
 TEST NO. 5A SIM. TO TEST NO. 1A
 TEST NO. 5B A-6(1)
 SIM. TO TEST NO. 1B
 P.I. 5043.50

(S.B.)
 TEST NO. 5 A-7-6 (12)
 SIM. TO TEST NO. 1
 (N.B.)
 TEST NO. 4 OIL MAT
 TEST NO. 4A SIM. TO TEST NO. 1A
 TEST NO. 4B A-6(1)
 SIM. TO TEST NO. 1B
 SE 1/4 SEC 3
 T. 5N. R. 68W.

(S.B.)
 TEST NO. 6 A-7-6 (12)
 SIM. TO TEST NO. 1
 (N.B.)
 TEST NO. 5 OIL MAT
 TEST NO. 5A SIM. TO TEST NO. 1A
 TEST NO. 5B A-6(10)
 L.C. = 95'

2329+00 2459+96.0 BK.
 REQ'D FRONTAGE
 ROAD, RT.

2330+15
 REQ'D 18" x 28"
 R.C.P. SIDE DRAIN
 & ROAD APPROACH
 TO FRONTAGE ROAD,
 RT.

(S.B.)
 TEST NO. 7 A-7-6 (12)
 SIM. TO TEST NO. 1
 (N.B.)
 TEST NO. 6 OIL MAT
 TEST NO. 6A SIM. TO TEST NO. 1A
 TEST NO. 6B SIM. TO TEST NO. 5B

2335+00
 REQ'D 24" x 52"
 R.C.P. CROSS
 CULVERT, LT.
 2-FLARED END
 SECTIONS. EXTEND
 24" x 28" G.M. R. 20' RT.
 REQ'D METAL APPROX.
 RT. DITCHES

2307+58.8
 2308+96.8
 REQ'D BRIDGES,
 RT. & LT. (SEE
 DETAIL SHEET
 NO. 44-52)

2317+03
 REMOVE 36" C.M.P.,
 RT. REQ'D 20" x 36"
 R.C.P. CROSS
 CULVERT,
 2-FLARED END
 SECTIONS,
 DITCHES.

2321+00
 REQ'D 20" x 70"
 R.C.P. CROSS
 CULVERT, LT.
 2-FLARED END
 SECTIONS.

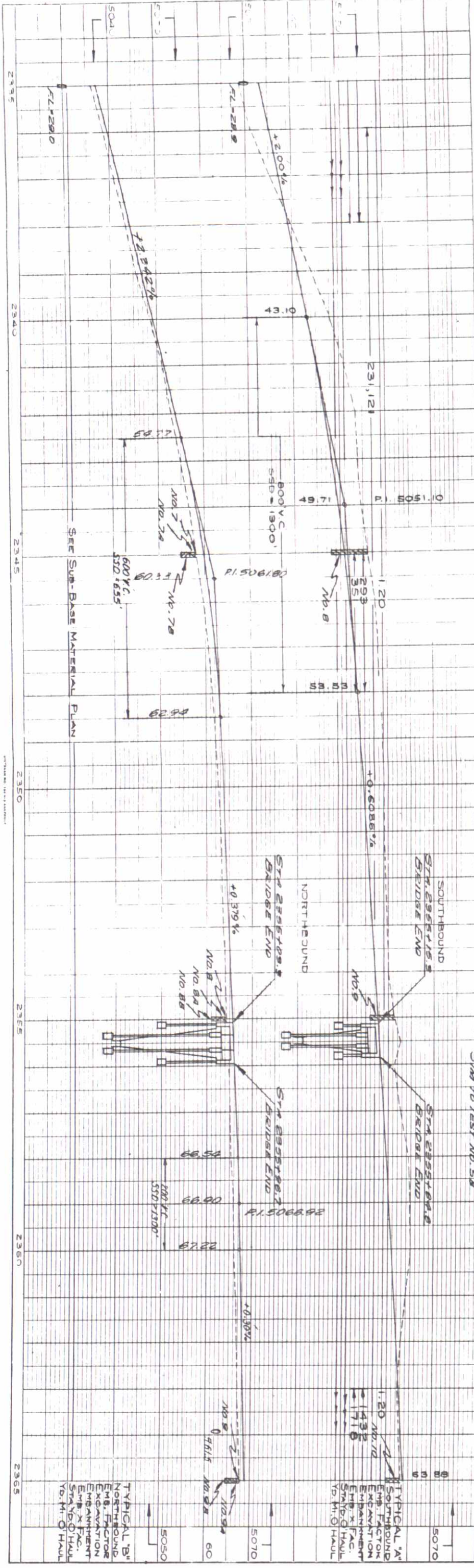
SW 1/4 SEC 3
 T. 5N. R. 68W.

NW 1/4 SEC 3
 T. 5N. R. 68W.

FEDERAL ROAD REGION NO.	DIVISION	PROJECT NO.	SHEET NO.
125-3(35) 258		59	

PROFILE	SURVEYED	BY	DATE
18M	PLATT		
	FRACED CHECKED		
	R.M. NOTED		
	STRUCTURE NOTATIONS ON		

12-22-72



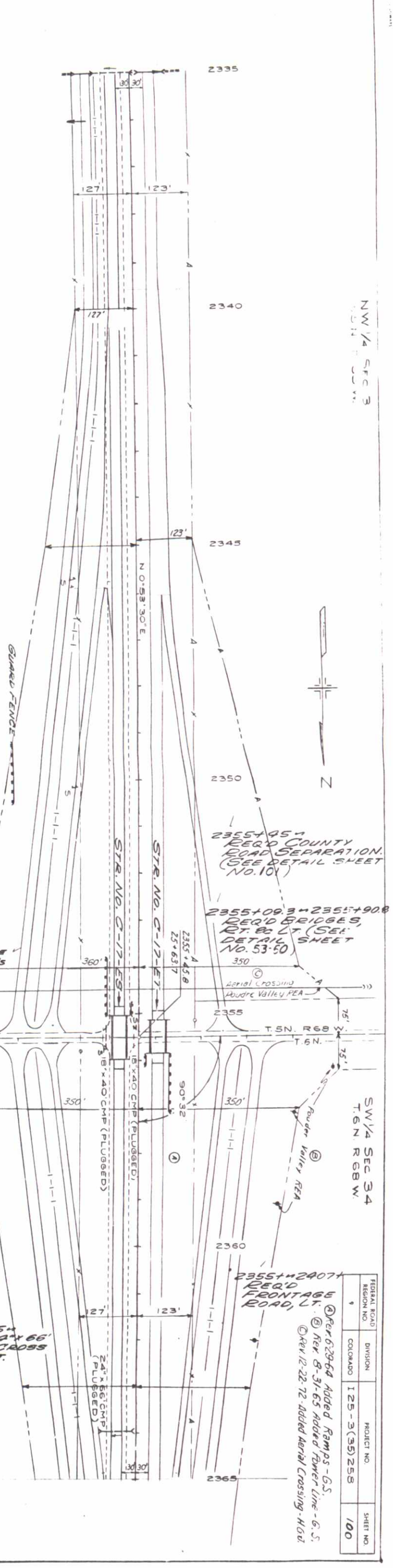
NE 1/4 SEC 3
T. 5N. R. 68W

(S.B.)
TEST NO. 8, A-7-6 (12)
SIM. TO TEST NO. 1
(N.B.)
TEST NO. 7 OIL MAT
TEST NO. 7A SIM. TO TEST NO. 1A
TEST NO. 7B, A-6 (10)
SIM. TO TEST NO. 5B

(S.B.)
TEST NO. 9, A-7-6 (12)
SIM. TO TEST NO. 1
(N.B.)
TEST NO. 8 OIL MAT
TEST NO. 8A SIM. TO TEST NO. 1A
TEST NO. 8B, A-6 (10)
SIM. TO TEST NO. 5B

(S.B.)
TEST NO. 10, A-7-6 (13)
P.I. = 22
P.L. = 42
L = 200 = 84
(N.B.)
TEST NO. 9 OIL MAT
TEST NO. 9A SIM. TO TEST NO. 1A
TEST NO. 9B, A-6 (10)
SIM. TO TEST NO. 5B

SE 1/4 SEC 34
T. 6N. R. 68W.



NW 1/4 SEC 3
T. 5N. R. 68W.

SW 1/4 SEC 34
T. 6N. R. 68W.

2355+451
REQ'D COUNTY
ROAD SEPARATION.
(SEE DETAIL SHEET
NO. 10)

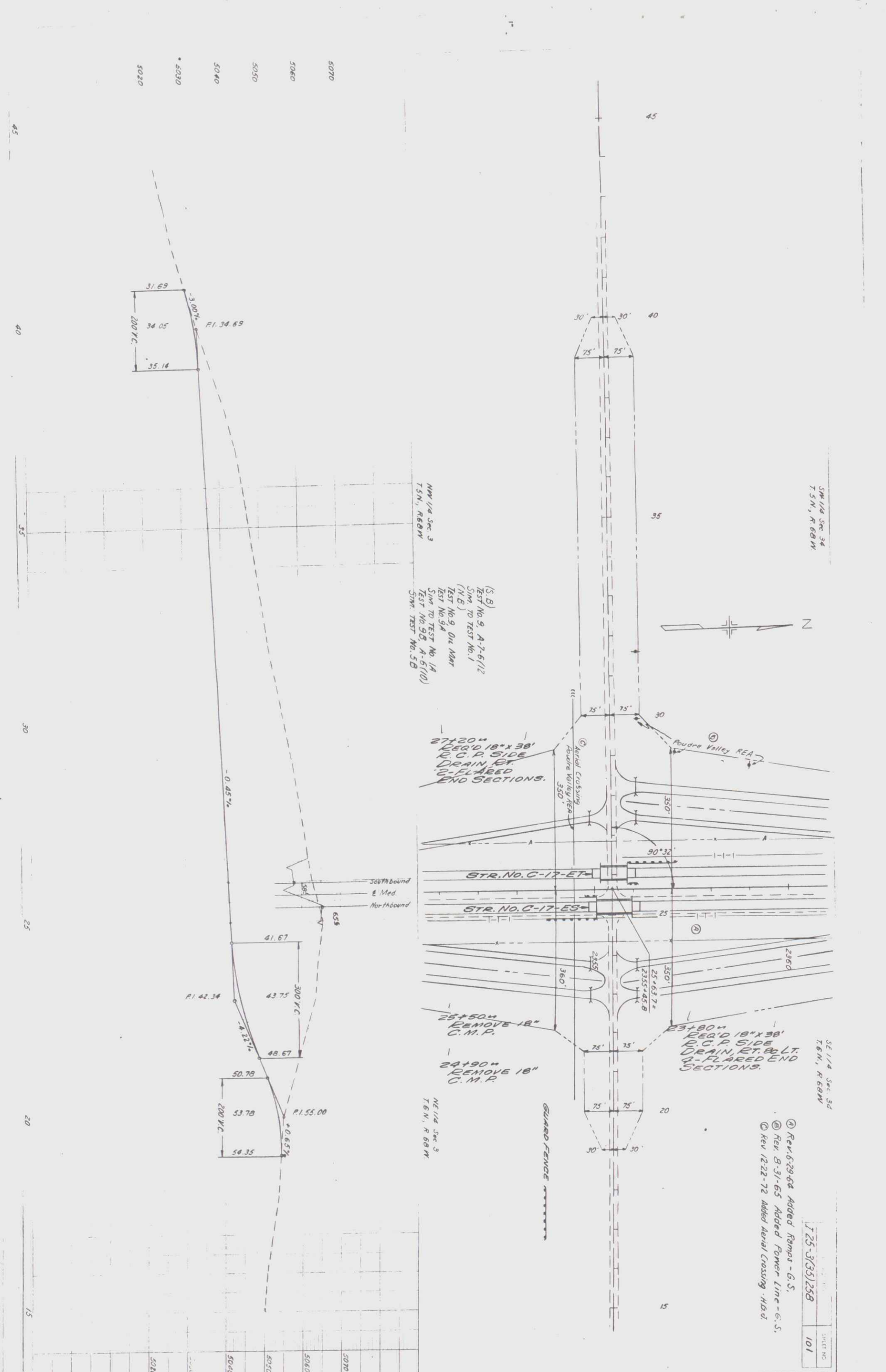
2355+09.3 + 2355+90.8
REQ'D BRIDGES,
RT. 80 LT. (SEE
DETAIL SHEET
NO. 53-60)

Aerial Crossing
Poudre Valley REA

2355+240.7
REQ'D
FRONTAGE
ROAD, LT.

Rev 6-29-64 Added Ramps - G.S.
Rev 8-31-65 Added Power Line - G.S.
Rev 12-22-72 Added Aerial Crossing - H.G.B.

FEDERAL ROAD REGION NO.	DIVISION	PROJECT NO.	SHEET NO.
4	COLORADO	125-3(35)258	100



SW 1/4 Sec. 34
T5N, R68W

SE 1/4 Sec. 34
T6N, R68W

NW 1/4 Sec. 3
T5N, R68W

(S.B.)
TEST No. 9, A-7-6(1/2)
SIM. TO TEST No. 1
(N.B.)
TEST No. 9, One MAT
SIM. TO TEST No. 1A
TEST No. 9A
SIM. TO TEST No. 1A
TEST No. 9B, A-6(1/0)
SIM. TEST No. 5B

- Ⓐ Rev. 6-29-64 Added Ramps - G.S.
- Ⓑ Rev. 8-31-65 Added Power Line - G.S.
- Ⓒ Rev. 12-22-72 Added Aerial Crossing - H.D.

I 25-3(35)258

SHEET NO
101



27x20" REQ'D 18"x38" R.C.P. SIDE DRAIN, RT. 2-FLARED END SECTIONS.

23x80" REQ'D 18"x38" R.C.P. SIDE DRAIN, RT. & LT. 2-FLARED END SECTIONS.

25+50" REMOVE 18" C.M.P.

24+90" REMOVE 18" C.M.P.

GUARD FENCE

STR. NO. C-17-ET

STR. NO. C-17-ES

Aerial Crossing
Poudre Valley REA
350'

Poudre Valley REA

Southbound
Med.
Northbound

655

90°32'

350'

25+63.7±

2335+45.8

350'

360'

360'

360'

360'

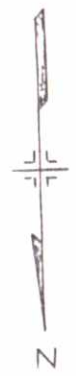
360'

360'

360'

360'

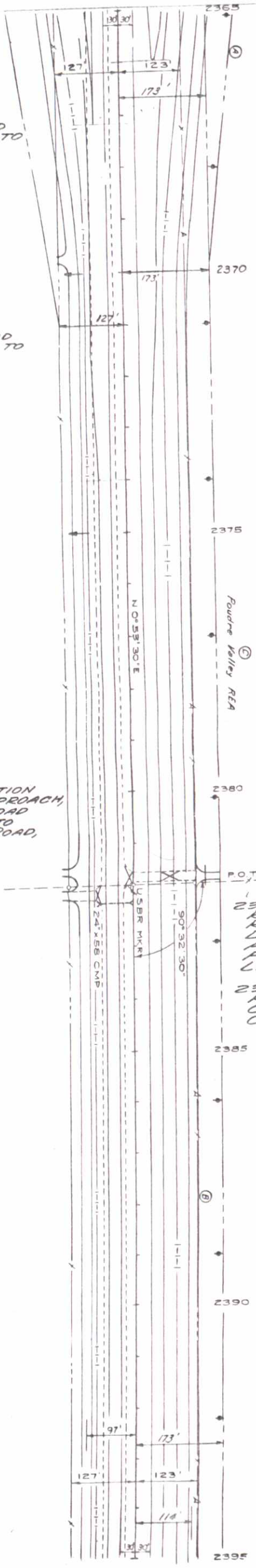
SW 1/4 SEC 34
T6N R68W



NW 1/4 SEC 34
T6N R68W

125-3(35)258 102

Rev. 6-29-64 (A) Added Ramps (B) Fr. Rd U-G.S.
Rev. 8-31-65 Added Former Line - G.S.



2369+75' REQ'D ROAD APPROACH TO FRONTAGE ROAD, RT.

2381+59' REQ'D ROAD APPROACH TO FRONTAGE ROAD, RT.

SE 1/4 SEC 34
T6N R68W

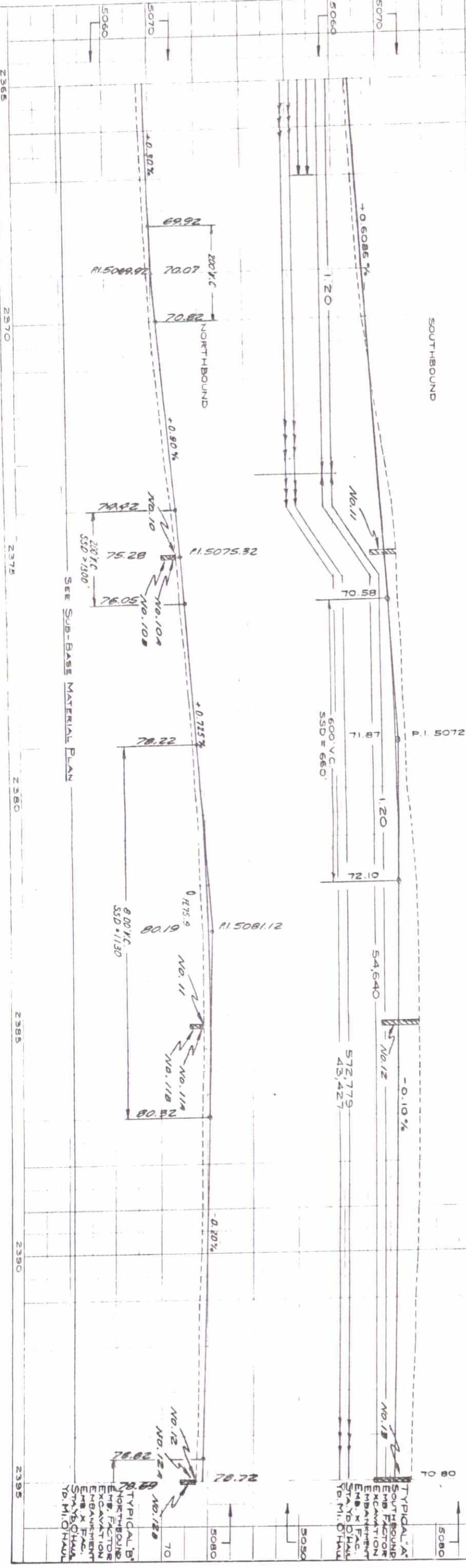
2382+00' REMOVE PORTION OF ROAD APPROACH, RT. REQ'D ROAD APPROACH TO FRONTAGE ROAD, RT.

NE 1/4 SEC 34
T6N R68W

(S.B.)
TEST NO. 11, A-7-6(13)
SIM. TO TEST NO. 10
(N.B.)
TEST NO. 10, OIL MAT
TEST NO. 10, SIM. TO TEST NO. 14
TEST NO. 10, A-6(10)
SIM. TO TEST NO. 5B

(S.B.)
TEST NO. 12, A-7-6(13)
SIM. TO TEST NO. 10
(N.B.)
TEST NO. 11, OIL MAT
TEST NO. 11, SIM. TO TEST NO. 14
TEST NO. 11, A-6(10)
SIM. TO TEST NO. 5B

(S.B.)
TEST NO. 13, A-7-6(13)
SIM. TO TEST NO. 10
(N.B.)
TEST NO. 12, OIL MAT
TEST NO. 12, SIM. TO TEST NO. 14
TEST NO. 12, A-6(10)
SIM. TO TEST NO. 5B



SOUTHBOUND

NORTHBOUND

SEE SUB-BASE MATERIAL PLAN

TYPICAL 'A'
SOUTHBOUND
EMB. FACTOR
EXCAVATION
EMBANKMENT
EMB. X FAC.
STR. TO DRAIN
TO M. CHAUL

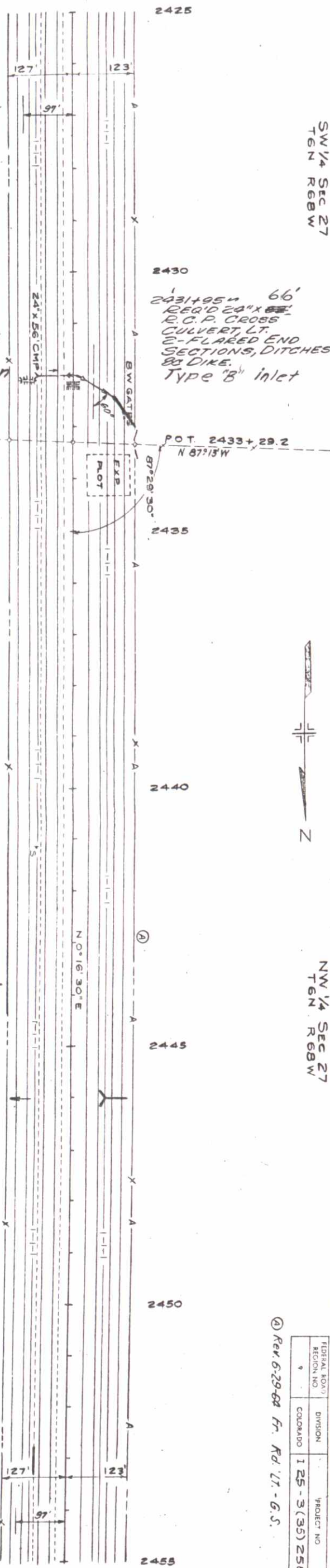
TYPICAL 'B'
NORTHBOUND
EMB. FACTOR
EXCAVATION
EMBANKMENT
EMB. X FAC.
STR. TO DRAIN
TO M. CHAUL

SW 1/4 Sec 27
T6N R68W

NW 1/4 Sec 27
T6N R68W

FEDERAL ROAD DISTRICT NO.	DIVISION	PROJECT NO.	SHEET NO.
9	COLORADO	125-3(35) 258	104

Rev. 6-29-88 Fr. Rd. 17-G.S.



(S.B.)
TEST NO. 17, 9-7-6 (13)
SIM. TO TEST NO. 10
(N.B.)
TEST NO. 16, OIL MAT
TEST NO. 16A, SIM. TO TEST NO. 1A
TEST NO. 16B, 9-6 (10)
SIM. TO TEST NO. 5B

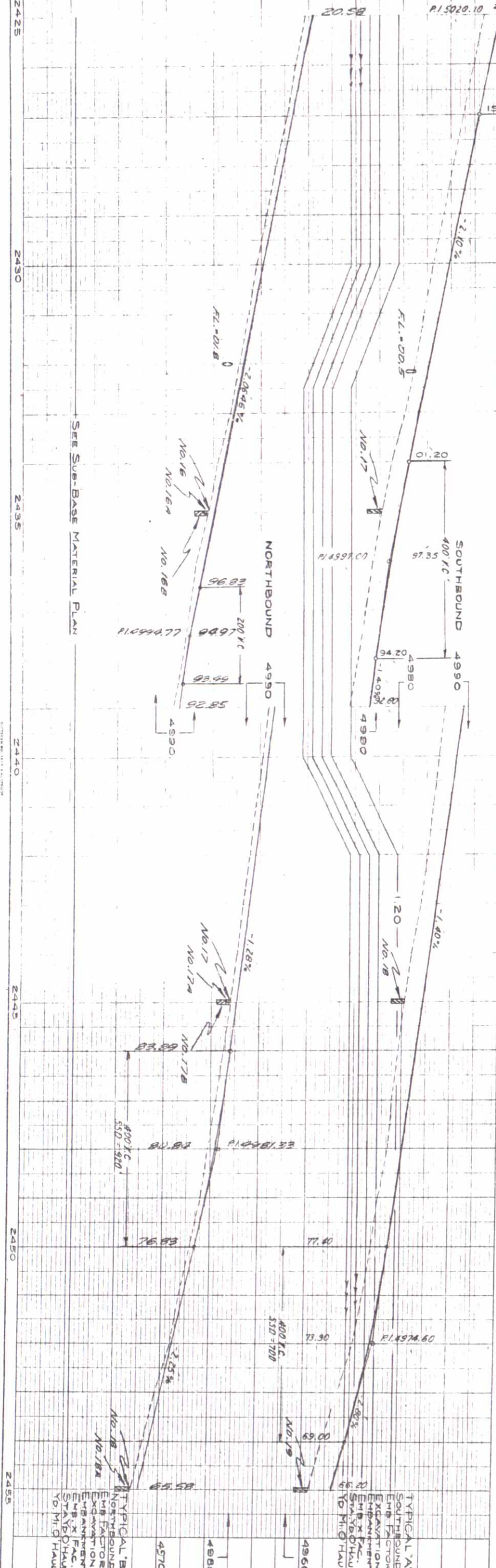
2432+59
24" x 56' C.M.P. Cross
Culvert under W.
Fr. Rd., 1-Metal Apron

(S.B.)
TEST NO. 18, 9-7-6 (13)
SIM. TO TEST NO. 10
(N.B.)
TEST NO. 17, OIL MAT
TEST NO. 17A, SIM. TO TEST NO. 1A
TEST NO. 17B, 9-6 (10)
SIM. TO TEST NO. 5B

2446+00
18" x 36' RCP Cross
Culvert under W. Fr.
Rd., 1-Flared end
section.

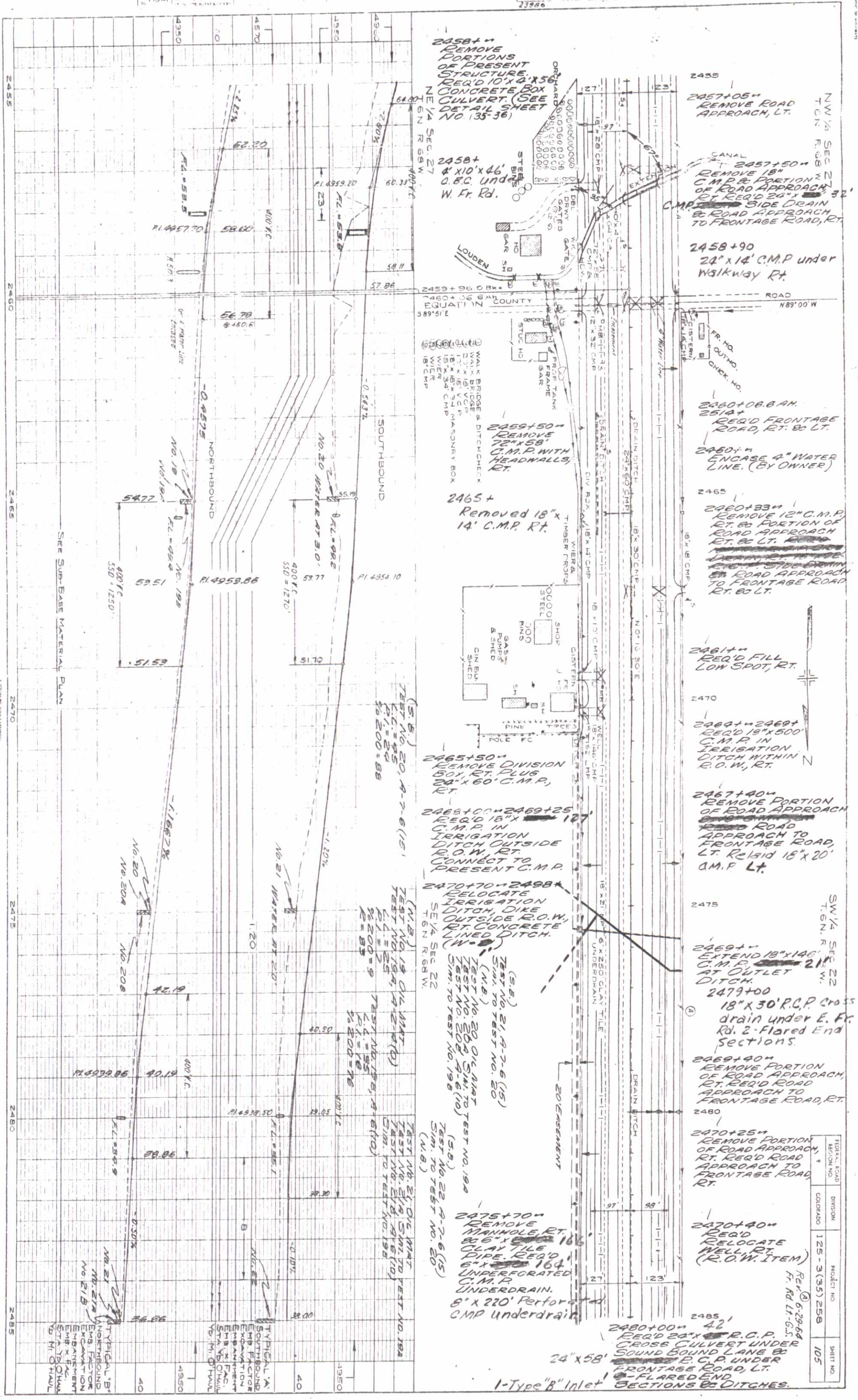
(S.B.)
TEST NO. 19, 9-7-6 (13)
SIM. TO TEST NO. 10
(N.B.)
TEST NO. 18, OIL MAT
TEST NO. 18A, SIM. TO TEST NO. 1A
TEST NO. 18B, 9-6 (10)
SIM. TO TEST NO. 5B

2453+00
12" x 18' C.M.P.
under sign
Island Rt.



SEE SUB-BASE MATERIAL PLAN

TYPICAL "A"
SOUTHBOUND
EMB. FACTOR
EXCAVATION
EMBANKMENT
EMB. X F.A.C.
ST. AND D.H.A.U.
TO M.H.G. HAVL



- 2458+ REMOVE PORTIONS OF PRESENT STRUCTURE. REQ'D 10'x4'x56" CONCRETE BOX CULVERT. (SEE DETAIL SHEET NO. 135-36)
- 2458+ 4'x10'x46" O.B.C. UNDER W. Fr. Rd.
- 2457+05" REMOVE ROAD APPROACH, LT.
- 2457+50" REMOVE 18" C.M.P. PORTION OF ROAD APPROACH OF REQ'D 24" x 32" SIDE DRAIN TO FRONTAGE ROAD, RT.
- 2458+90 24" x 14" C.M.P. under Walkway Rt.
- 2459+96 O.B.C. EQUATION 389'51"E
- 2459+50" REMOVE 22" x 58" C.M.P. WITH HEADWALLS, RT.
- 2465+ Removed 18" x 14" C.M.P. RT.
- 2460+06.8 A.M. 251A+ REQ'D FRONTAGE ROAD, RT. & LT.
- 2460+ ENCASE 4" WATER LINE. (BY OWNER)
- 2460+33" REMOVE 12" C.M.P. RT. & PORTION OF ROAD APPROACH RT. & LT.
- 2461+ REQ'D FILL LOW SPOT, RT.
- 2464+2469+ REQ'D 18" x 500' C.M.P. IN IRRIGATION DITCH WITHIN R.O.W., RT.
- 2467+40" REMOVE PORTION OF ROAD APPROACH TO FRONTAGE ROAD, LT. REQ'D 15' x 20' C.M.P. LT.
- 2469+ EXTEND 18" x 146" C.M.P. 21' AT OUTLET DITCH.
- 2479+00 18" x 30' R.C.P. cross drain under E. Fr. Rd. 2-Flared End Sections.
- 2469+40" REMOVE PORTION OF ROAD APPROACH, RT. REQ'D ROAD APPROACH TO FRONTAGE ROAD, RT.
- 2470+25" REMOVE PORTION OF ROAD APPROACH, RT. REQ'D ROAD APPROACH TO FRONTAGE ROAD, RT.
- 2470+40" REQ'D RELOCATE WELL, RT. (R.O.W. ITEM)
- 2475+70" REMOVE MANHOLE RT. 80" x 80" 166" CLAY TILE PIPE. REQ'D 6" x 164" UNPERFORATED C.M.P. UNDERDRAIN. 8" x 220' Perforated CMP underdrain.
- 2480+00" 42" REQ'D 24" x 42" R.C.P. CROSS CULVERT UNDER SOUND BOUND LANE & 24" x 58" B.C.P. UNDER FRONTAGE ROAD, LT. 2-FLARED END SECTIONS @ DITCHES.

NW 1/4 SEC 22 T6N R68W
 SW 1/4 SEC 22 T6N R68W
 FEDERAL ROAD DIVISION COLORADO PROJECT NO. 125-3(35)258 SHEET NO. 105
 Ref. 6-29-68 Fr. Rd. Lt. G.S.

SEE SUB-BASE MATERIAL PLAN

TYPICAL 'A' SOUTHBOUND EMB. FACTOR EXCAVATION EMB. FAC. STA. TO CHAWL 10'-11" CHAWL

TYPICAL 'B' NORTHBOUND EMB. FACTOR EXCAVATION EMB. FAC. STA. TO CHAWL 10'-11" CHAWL

(S.B.) TEST NO. 20, A-7-6(15) C.I. = 95 P.I. = 24 % 200 = 88

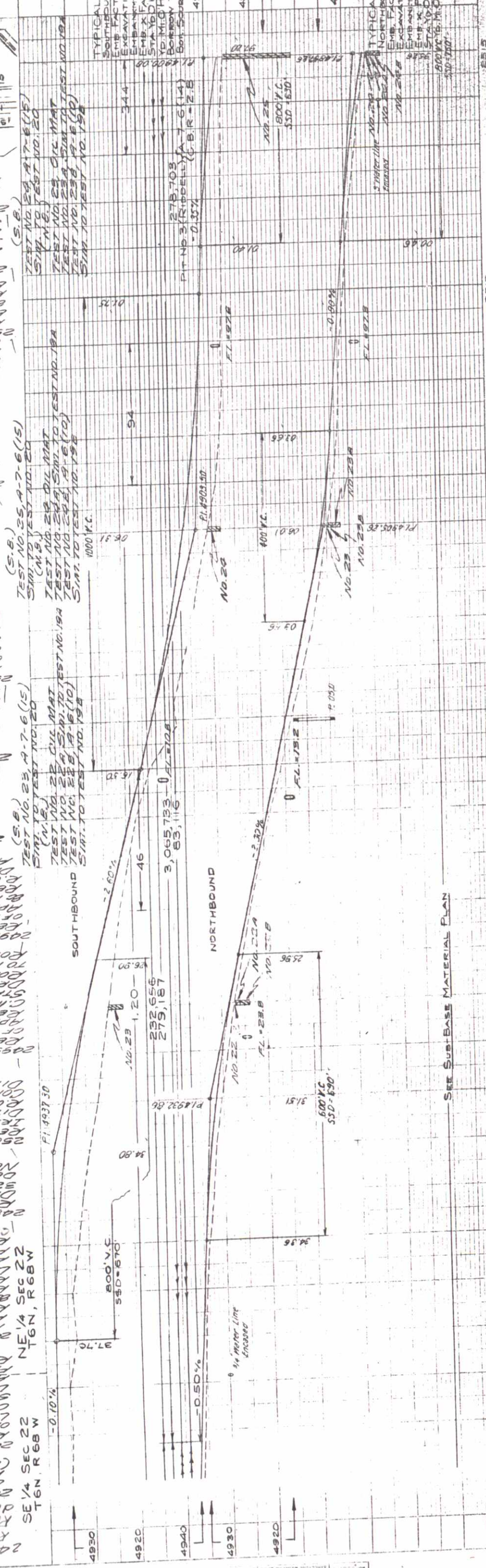
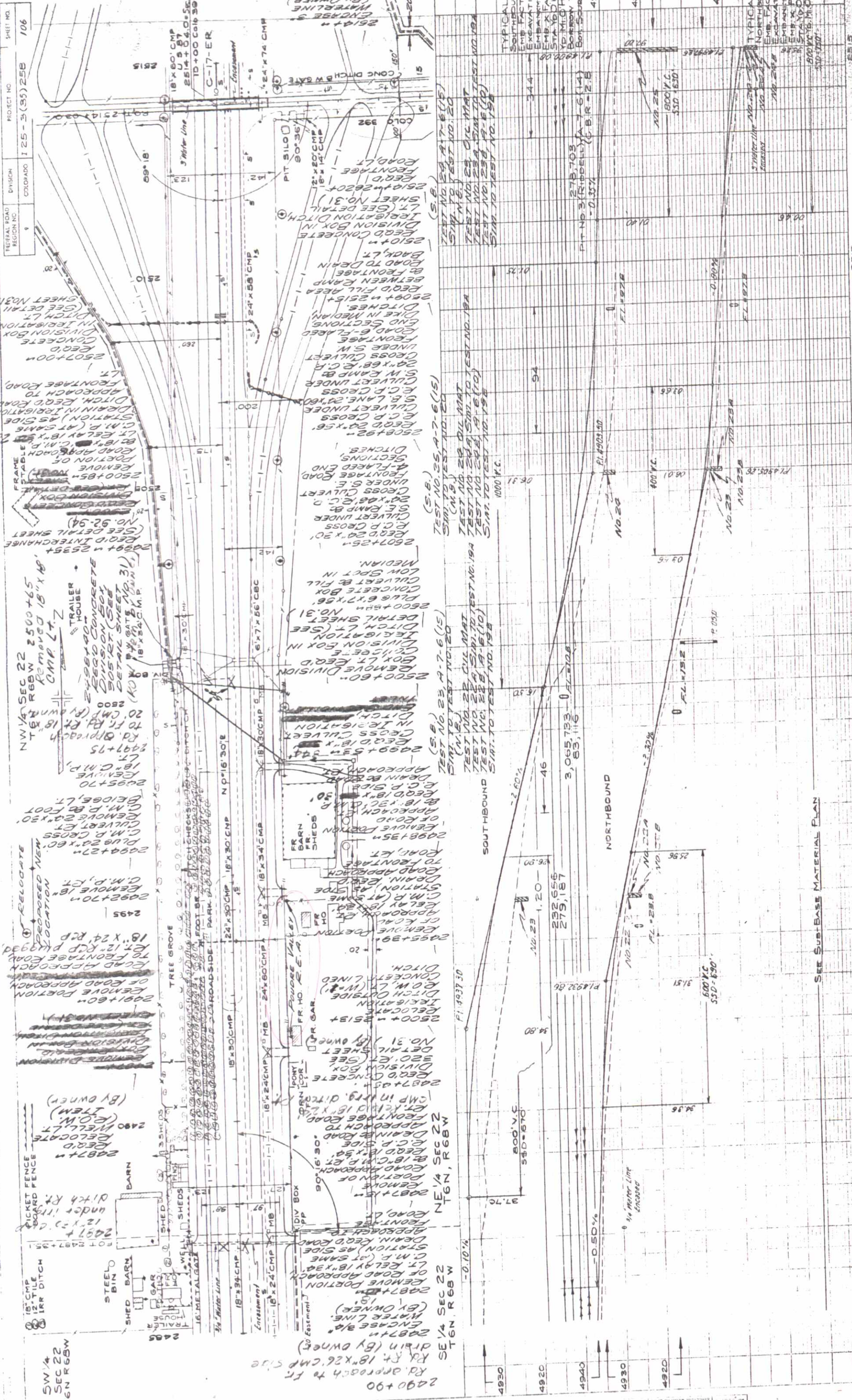
(N.B.) TEST NO. 19 OIL MAT TEST NO. 19A, A-2-4(D) C.I. = 75 P.I. = 25 % 200 = 9

(S.B.) TEST NO. 21, A-7-6(15) SIM. TO TEST NO. 20

(N.B.) TEST NO. 20 OIL MAT TEST NO. 20A, A-2-4(D) C.I. = 95 P.I. = 18 % 200 = 76

(S.B.) TEST NO. 22, A-7-6(15) SIM. TO TEST NO. 20

(N.B.) TEST NO. 22, A-7-6(15) SIM. TO TEST NO. 20



SEE SUB-BASE MATERIAL PLAN

RELOCATE
 PROPOSED NEW LOCATION
 NW 1/4 SEC 15
 T6N R68W

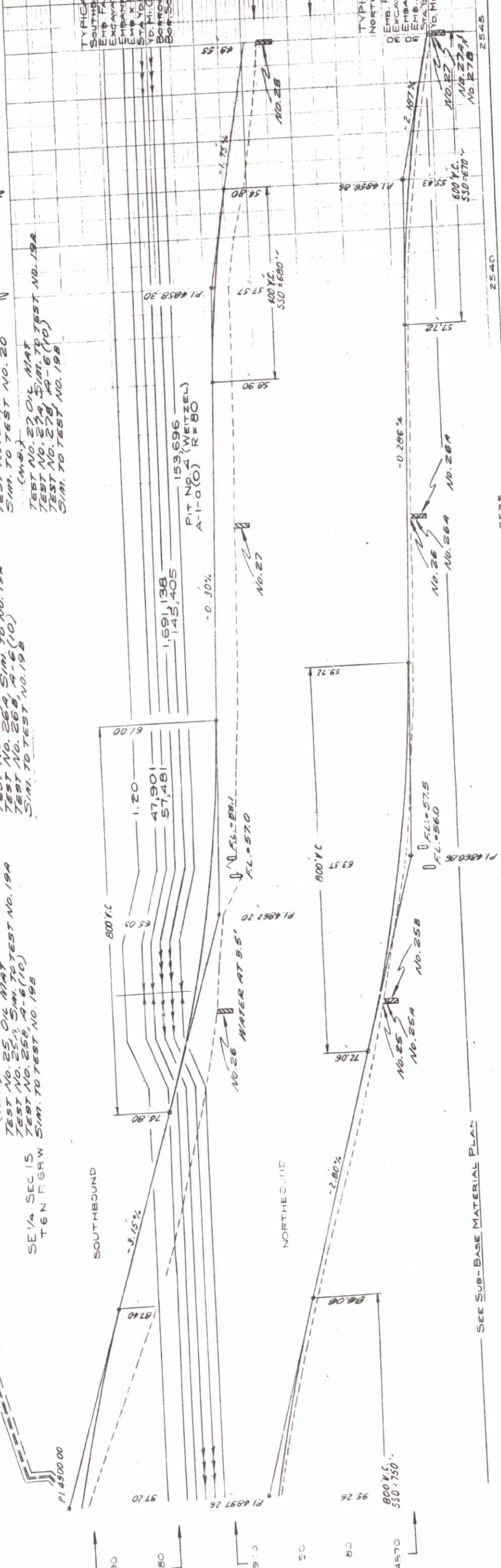
2528+00
 REMOVE DIVISION
 BOX LT. RECD.
 IN IRRIGATION
 DITCH LT. (SEE
 DETAIL SHEET
 NO. 31)
 2528+10
 RECD. 18"x28"
 R.C.P. SIDE DRAIN
 BE 18"x28" R.C.P.
 SIDE DRAIN IN
 IRRIGATION DITCH
 TO FRONTAGE
 ROAD, LT.

2528+15
 REMOVE DIVISION
 BOX LT. RECD.
 IN IRRIGATION
 DITCH LT. (SEE
 DETAIL SHEET
 NO. 31)
 2528+20
 RECD. 18"x28"
 R.C.P. SIDE DRAIN
 BE 18"x28" R.C.P.
 SIDE DRAIN IN
 IRRIGATION DITCH
 TO FRONTAGE
 ROAD, LT.

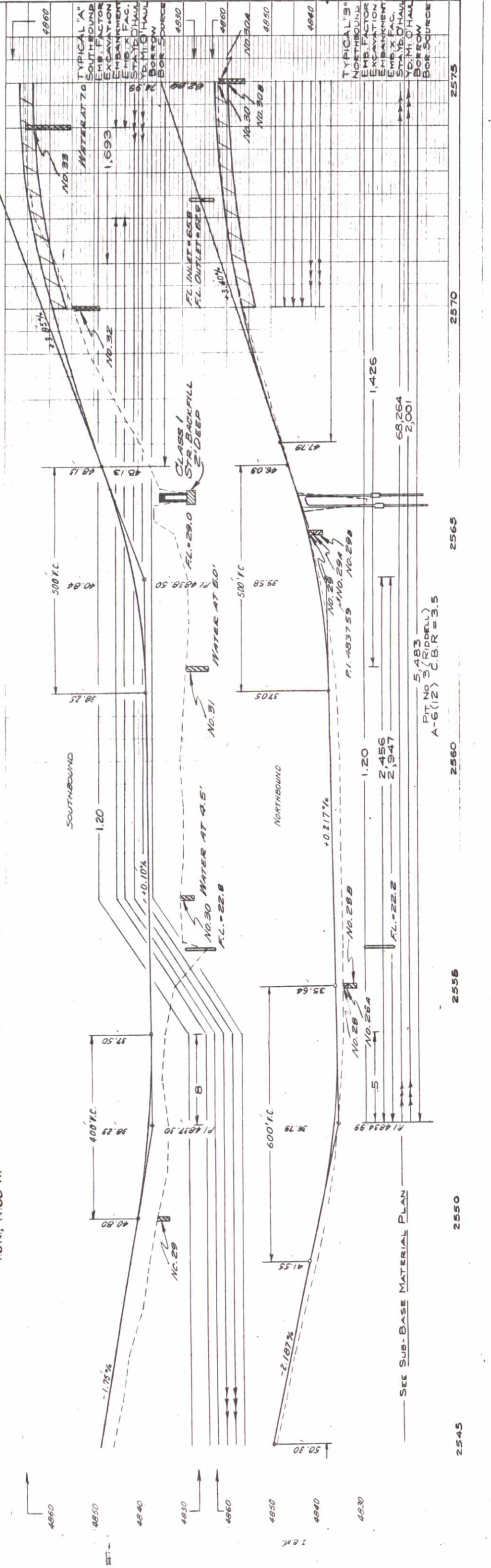
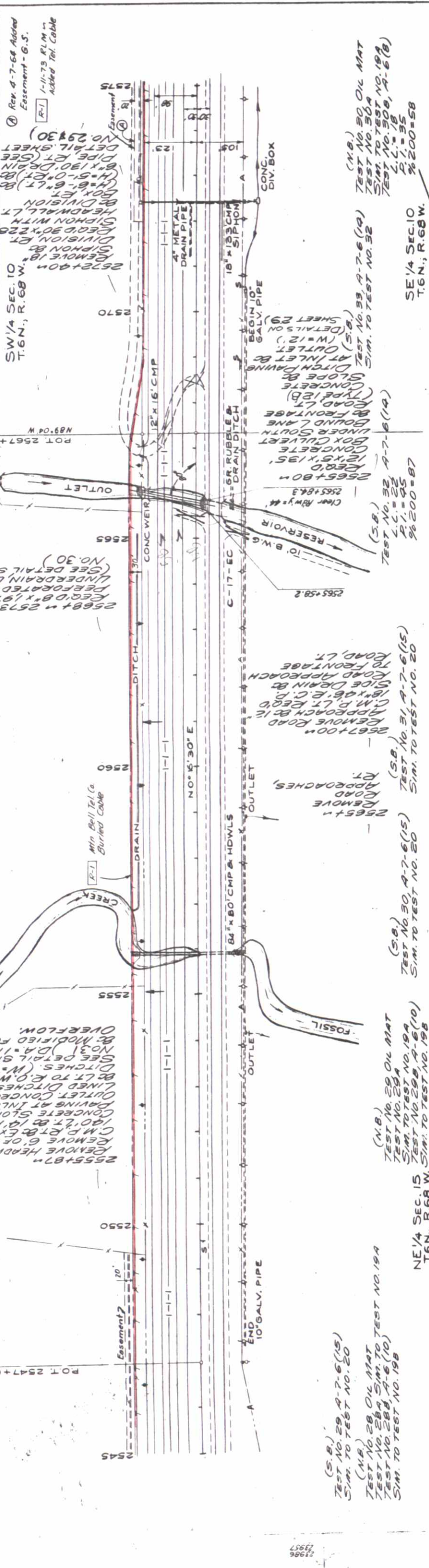
2527+77
 REMOVE 30"
 C.M.P. RT.
 RECD. 30"x36"
 R.C.P. CROSS
 N.B. LANE UNDER
 CULVERT UNDER
 N.B. LANE 30"x40"
 R.C.P. CROSS
 S.B. LANE 30"x40"
 R.C.P. CROSS
 CULVERT UNDER
 FRONTAGE ROAD,
 LT. 6'-FLARED
 END SECTIONS
 CONCRETE LINED
 DITCH, RT. BE IN
 MEDIAN,
 2530

2524+00
 RECD. 24"x36"
 R.C.P. CROSS
 UNDER
 NE RAMP, RT.
 CULVERT UNDER
 20"x32" R.C.P.
 UNDER N.W.
 RAMP, LT.
 Q-FLARED END
 SECTIONS

2524+10
 REMOVE DIVISION
 BOX LT. RECD.
 IN IRRIGATION
 DITCH LT. (SEE
 DETAIL SHEET
 NO. 31)
 2524+20
 RECD. 18"x28"
 R.C.P. SIDE DRAIN
 BE 18"x28" R.C.P.
 SIDE DRAIN IN
 IRRIGATION DITCH
 TO FRONTAGE
 ROAD, LT.



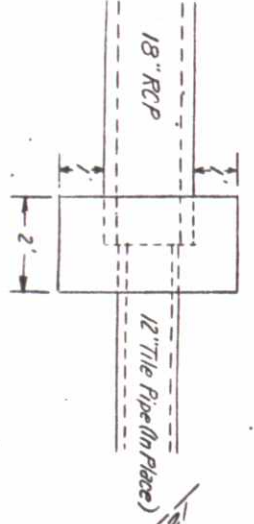
SEE SUB-BASE MATERIAL PLAN



SEE SUB-BASE MATERIAL PLAN

PIT No. 3 (RIDGELL)
 A-6(12) C.B.R. = 3.5

DETAIL CONC. CONNECTING COLLAR
 LT. STA. 2+



0+00
 24" x 24" CMP CROSS CULVERT
 RELAID 18" x 18" CMP

CONNECT 3" AC CL200
 PIPE TO EXISTING LINE

2+24
 REMOVE 12" TILE 90'
 PIPE LT. & RT.
 18" x 18" R.C.P.
 CROSS CULVERT TIE
 TO TILE PIPE IN
 PLACE ON LT. &
 UNDER 15" PIPE ON
 RT.

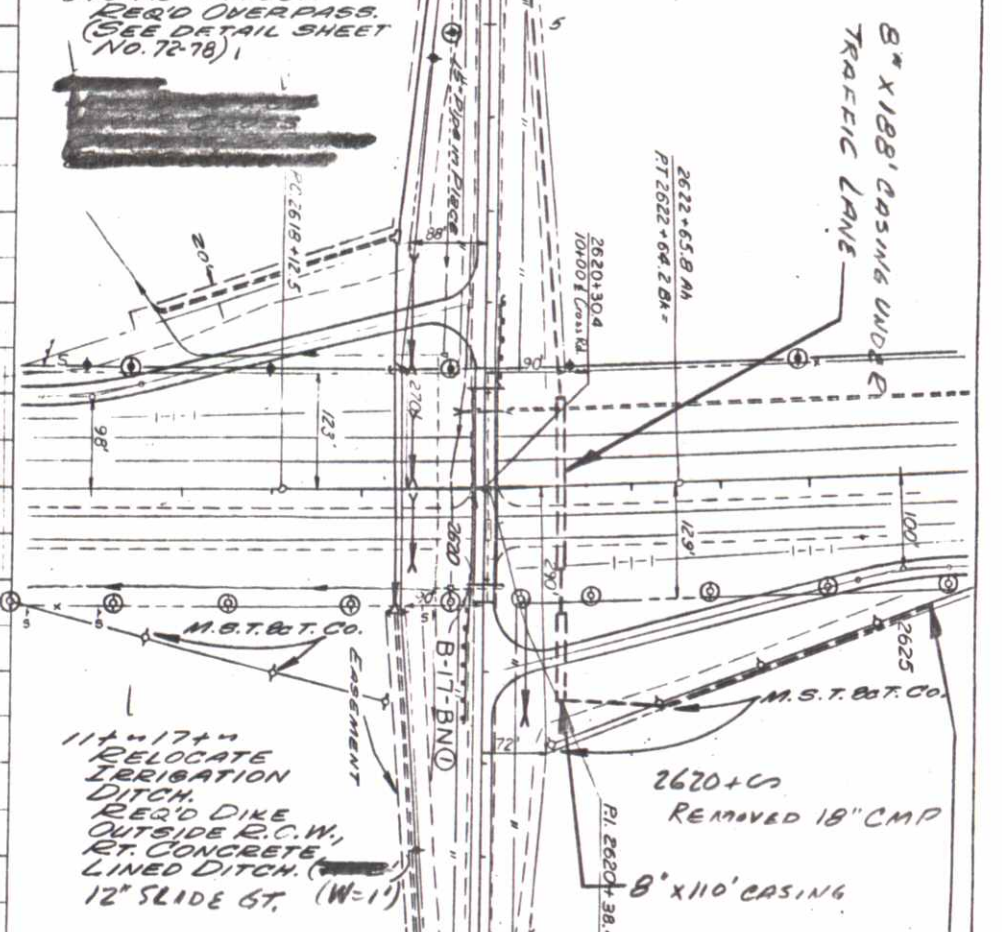
2+47+40 534'
 15" x 15" CONCRETE PIPE
 SEWER FOR
 IRRIGATION, RT.
 REQ'D DIKE FOR
 IRRIGATION.

8+94.6+11+05.4
 REQ'D OVERPASS.
 (SEE DETAIL SHEET
 NO. 72-78)

11+00
 REMOVED 24" x 58' CMP

12+00
 REMOVED 15' x 30' CMP
 & 12' x 20' CMP

8" x 188' CASING UNDER
 TRAFFIC LANE



11+17+44
 RELOCATE
 IRRIGATION
 DITCH.
 REQ'D DIKE
 OUTSIDE R.C.P. W/
 RT. CONCRETE
 LINED DITCH. (W=1)
 12" SLIDE ST. (W=1)

11+11
 24" x 100' RCP &
 2 FLARED END SECTIONS

RELOCATE
 PROPOSED NEW
 LOCATION

2620+00
 REMOVED 18" CMP

8" x 110' CASING

CONNECTED 3" D.C. CL200
 PIPE TO EXISTING LINE

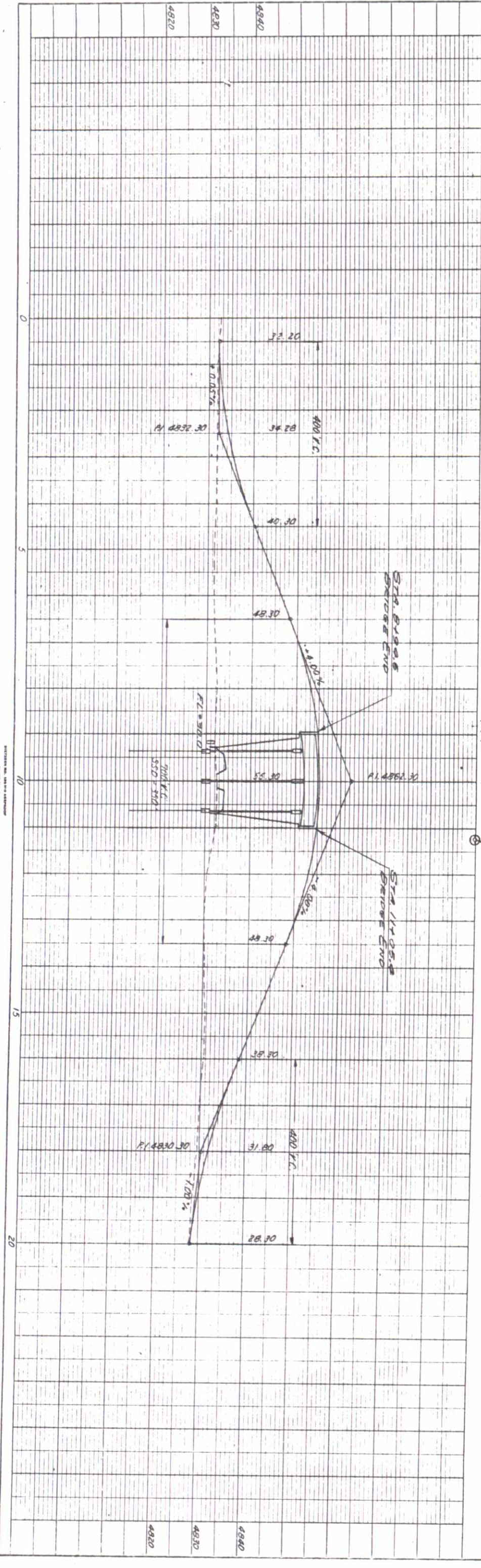
D. S. M.

COUNTY ROAD SEPARATION
 STA. 2620+

FEDERAL ROAD REGION NO.	DIVISION	PROJECT NO.	SHEET NO.
9	COLORADO	125-3(35)288	112
REV. STR. NO., 4-14-64, G.S.			

NOTE BOOK	PLANNED	ALIGNED CHECKED
PARAS CHECKED	BY	RT. OF WAY CHECKED
STRUCTURE NOTED TO CONFD		

NOTE BOOK	PLANNED	ALIGNED CHECKED
PARAS CHECKED	BY	RT. OF WAY CHECKED
STRUCTURE NOTED TO CONFD		



FEDERAL ROAD DISTRICT NO. COLORADO PROJECT NO. SHEET NO. 125-3(35)258 113
 (R-1) Removed Telephone Poles, added Buried Telephone Cable 3-26-79 A.C.I.

NW 1/4 SEC 3 T.6N. R.68W.

END SECTIONS OF FLARED CULVERT LT. REMOVE 20' X 82' C.M.P. CROSS CULVERT. RELOCATE 20' X 82' C.M.P. CROSS CULVERT. RELOCATE 20' X 82' C.M.P. CROSS CULVERT. RELOCATE 20' X 82' C.M.P. CROSS CULVERT. RELOCATE 20' X 82' C.M.P. CROSS CULVERT.

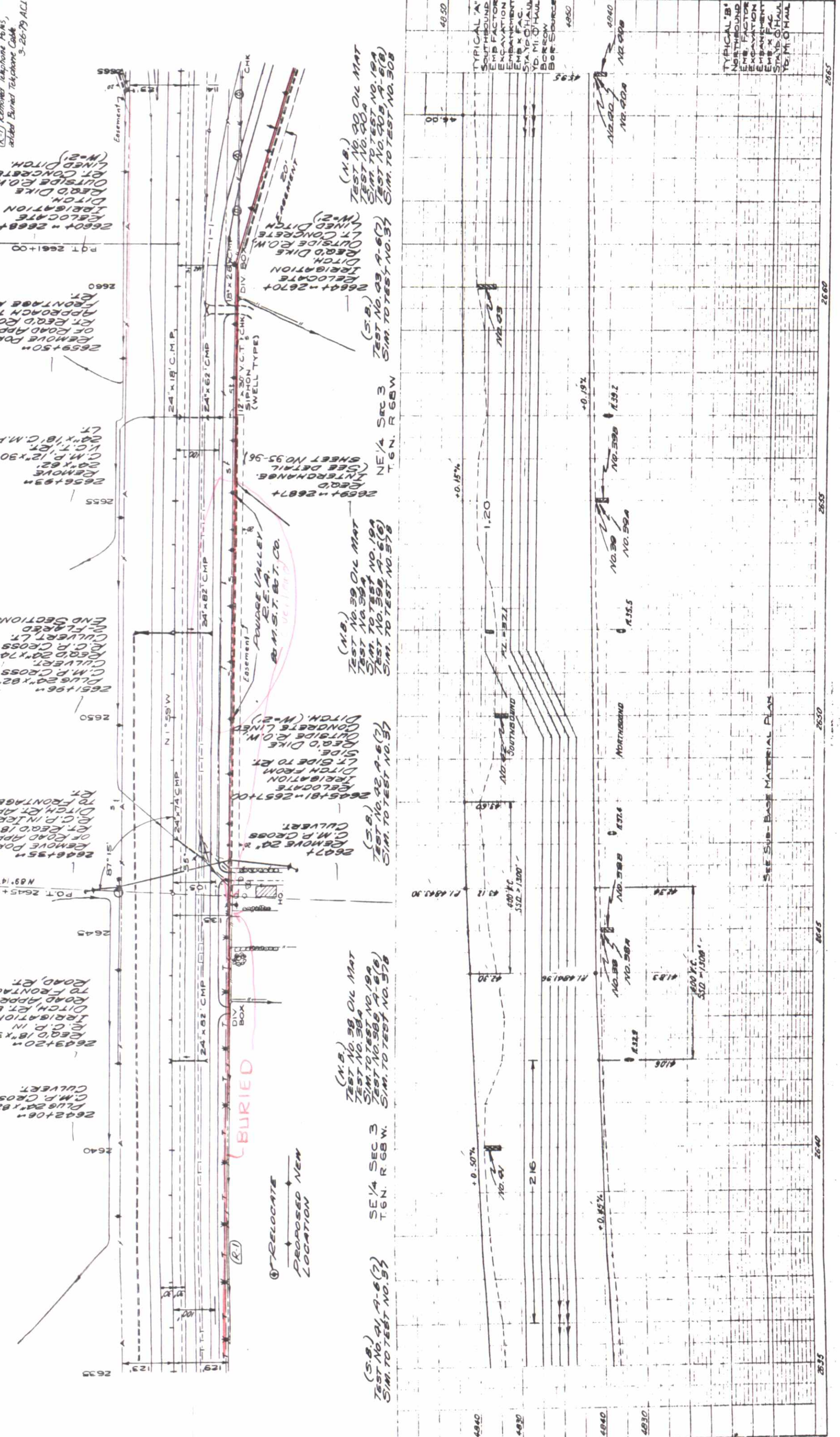
REMOVE PORTION OF ROAD APPROACH TO FRONTAGE ROAD, RELOCATE 18' X 30' C.M.P. CROSS CULVERT. RELOCATE 18' X 30' C.M.P. CROSS CULVERT. RELOCATE 18' X 30' C.M.P. CROSS CULVERT. RELOCATE 18' X 30' C.M.P. CROSS CULVERT.

REMOVE PORTION OF ROAD APPROACH TO FRONTAGE ROAD, RELOCATE 18' X 30' C.M.P. CROSS CULVERT. RELOCATE 18' X 30' C.M.P. CROSS CULVERT. RELOCATE 18' X 30' C.M.P. CROSS CULVERT. RELOCATE 18' X 30' C.M.P. CROSS CULVERT.

REMOVE PORTION OF ROAD APPROACH TO FRONTAGE ROAD, RELOCATE 18' X 30' C.M.P. CROSS CULVERT. RELOCATE 18' X 30' C.M.P. CROSS CULVERT. RELOCATE 18' X 30' C.M.P. CROSS CULVERT. RELOCATE 18' X 30' C.M.P. CROSS CULVERT.

REMOVE PORTION OF ROAD APPROACH TO FRONTAGE ROAD, RELOCATE 18' X 30' C.M.P. CROSS CULVERT. RELOCATE 18' X 30' C.M.P. CROSS CULVERT. RELOCATE 18' X 30' C.M.P. CROSS CULVERT. RELOCATE 18' X 30' C.M.P. CROSS CULVERT.

REMOVE PORTION OF ROAD APPROACH TO FRONTAGE ROAD, RELOCATE 18' X 30' C.M.P. CROSS CULVERT. RELOCATE 18' X 30' C.M.P. CROSS CULVERT. RELOCATE 18' X 30' C.M.P. CROSS CULVERT. RELOCATE 18' X 30' C.M.P. CROSS CULVERT.



SW 1/4 SEC 3 T.6N. R.68W. SE 1/4 SEC 3 T.6N. R.68W. TYPICAL 'A' SOUTHBOUND EMBANKMENT EXCAVATION EMBANKMENT STA. 10+00 TO 10+10 YD. M.O. HAUL BUREAU BER. SOURCE 4950 TYPICAL 'B' NORTHBOUND EMBANKMENT EXCAVATION EMBANKMENT STA. 10+00 TO 10+10 YD. M.O. HAUL BUREAU BER. SOURCE 4950

2635 2640 2645 2650 2655 2660 2665

FEDERAL ROAD REGION NO. 1
 DIVISION COLORADO
 PROJECT NO. 125-3(35)258
 SHEET NO. 115

COUNTY ROAD EAST & WEST
 2673 +

SE 1/4 SEC 34
 T. 7 N. R. 68 W.

SW 1/4 SEC 34
 T. 7 N. R. 68 W.

NW 1/4 SEC 3
 T. 6 N. R. 68 W.

NE 1/4 SEC 3
 T. 6 N. R. 68 W.

PROJ. LINE
 Δ = 30' 30"
 D = 2'
 T = 27.5'
 L = 175.0'
 R = 2865.0'

24' x 36' CMP
 18' x 16' CMP
 15' x 20' CMP
 24' x 14' CMP
 15' x 10' RCP

REMOVE 15" C.M.P. LT. & RT.
 REMOVE 15" R.C.P. CROSS
 REMOVE 2-24" C.M.P.'S
 REMOVE 2-24" C.M.P.'S

REMOVE 15" C.M.P. LT. & RT.
 REMOVE 15" R.C.P. CROSS
 REMOVE 2-24" C.M.P.'S
 REMOVE 2-24" C.M.P.'S

REMOVE 15" C.M.P. LT. & RT.
 REMOVE 15" R.C.P. CROSS
 REMOVE 2-24" C.M.P.'S
 REMOVE 2-24" C.M.P.'S

REMOVE 15" C.M.P. LT. & RT.
 REMOVE 15" R.C.P. CROSS
 REMOVE 2-24" C.M.P.'S
 REMOVE 2-24" C.M.P.'S

REMOVE 15" C.M.P. LT. & RT.
 REMOVE 15" R.C.P. CROSS
 REMOVE 2-24" C.M.P.'S
 REMOVE 2-24" C.M.P.'S

REMOVE 15" C.M.P. LT. & RT.
 REMOVE 15" R.C.P. CROSS
 REMOVE 2-24" C.M.P.'S
 REMOVE 2-24" C.M.P.'S

REMOVE 15" C.M.P. LT. & RT.
 REMOVE 15" R.C.P. CROSS
 REMOVE 2-24" C.M.P.'S
 REMOVE 2-24" C.M.P.'S

REMOVE 15" C.M.P. LT. & RT.
 REMOVE 15" R.C.P. CROSS
 REMOVE 2-24" C.M.P.'S
 REMOVE 2-24" C.M.P.'S

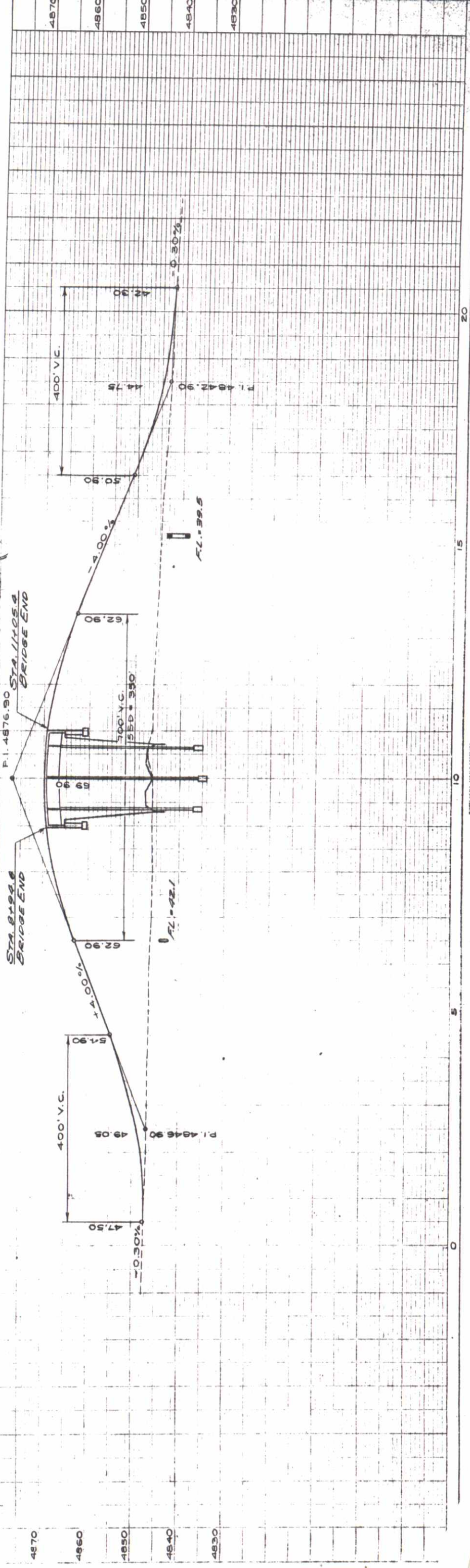
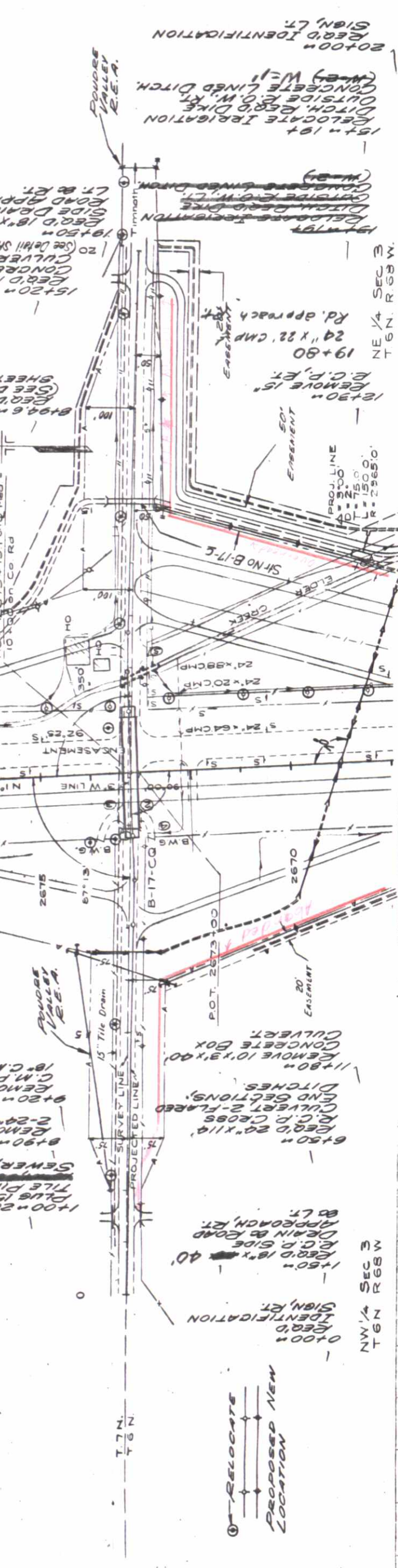
REMOVE 15" C.M.P. LT. & RT.
 REMOVE 15" R.C.P. CROSS
 REMOVE 2-24" C.M.P.'S
 REMOVE 2-24" C.M.P.'S

REMOVE 15" C.M.P. LT. & RT.
 REMOVE 15" R.C.P. CROSS
 REMOVE 2-24" C.M.P.'S
 REMOVE 2-24" C.M.P.'S

REMOVE 15" C.M.P. LT. & RT.
 REMOVE 15" R.C.P. CROSS
 REMOVE 2-24" C.M.P.'S
 REMOVE 2-24" C.M.P.'S

REMOVE 15" C.M.P. LT. & RT.
 REMOVE 15" R.C.P. CROSS
 REMOVE 2-24" C.M.P.'S
 REMOVE 2-24" C.M.P.'S

REMOVE 15" C.M.P. LT. & RT.
 REMOVE 15" R.C.P. CROSS
 REMOVE 2-24" C.M.P.'S
 REMOVE 2-24" C.M.P.'S

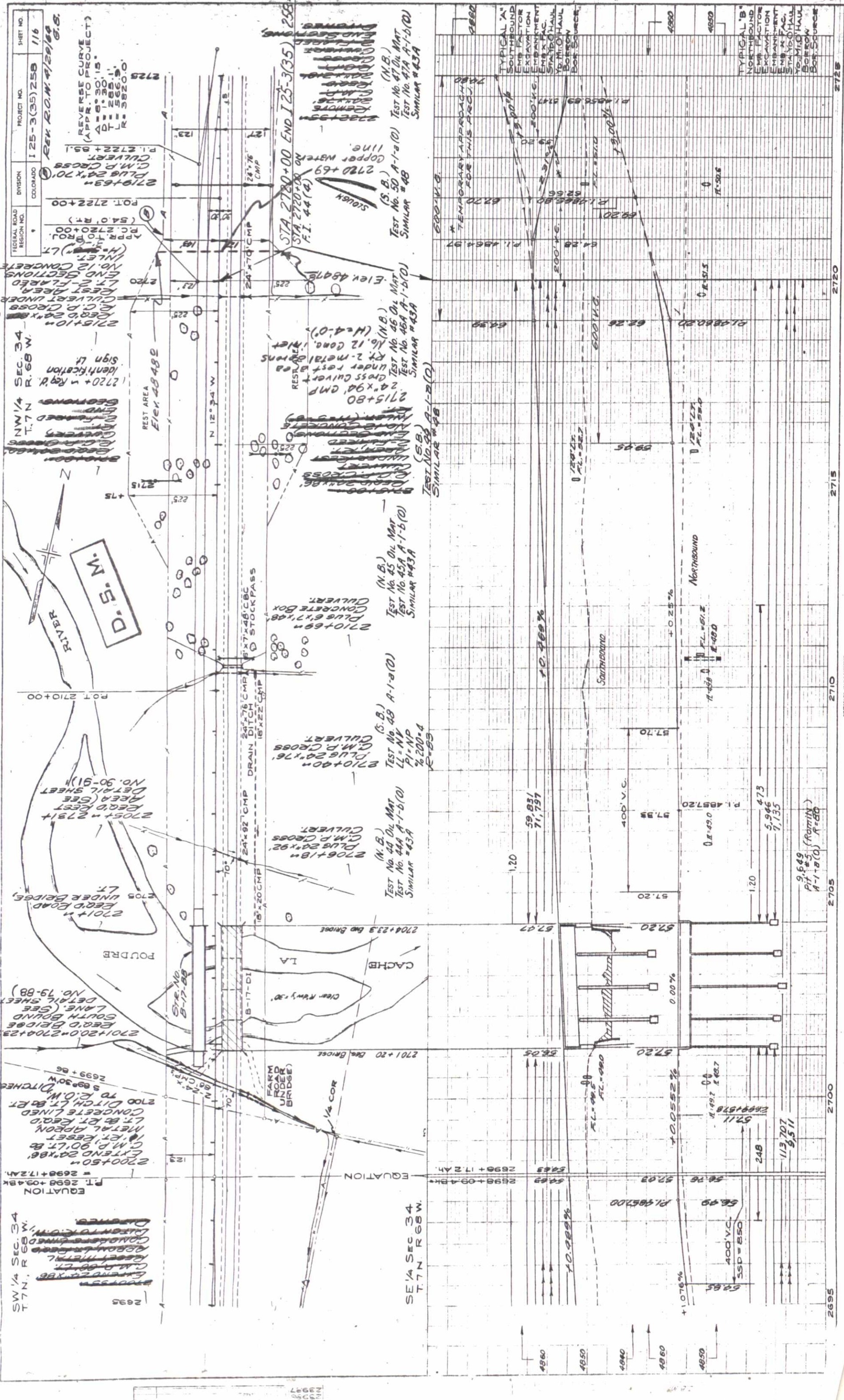


PLAN

DATE	BY

PROFILE

DATE	BY



FEDERAL ROAD DISTRICT NO. 1
 DIVISION COLORADO
 PROJECT NO. I 25-3(35) 258
 SHEET NO. 116

REK. R.O.M. #120/80
 (REVERSE CURVE)
 (APPR. TO PROJECT)
 A=9°30'15"
 L=110.0'
 E=28.1'
 R=3820.0'

SW 1/4 SEC. 34
 T. 7 N., R. 68 W.
 NW 1/4 SEC. 34
 T. 7 N., R. 68 W.

REST AREA
 ELEV. 4848.2
 2720+00
 2715+10
 2710+00

2705+00
 2700+50
 EQUATION
 P.I. 2698+09.48
 = 2698+17.24

2700+50
 EQUATION
 P.I. 2698+09.48
 = 2698+17.24

2695
 EQUATION
 P.I. 2698+09.48
 = 2698+17.24

2719+50
 C.M.P. CROSS
 P.O.T. 2722+00
 (54.0 RT.)
 APPR. TO PROJ.
 P.C. 2720+00
 (H=5.5) LT.

2715+80
 24x94 CMP
 REST AREA
 UNDER REST AREA
 RT 2-METAL BARRIERS
 NO. 12 CONC. INLET
 (H=4'-0")

2710+90
 18x22 CMP
 DRAIN TO STOCKPASS
 18x22 CMP
 24x92 CMP

2706+18
 24x92 CMP
 C.M.P. CROSS
 2706+18
 CULVERT

2701+20
 24x92 CMP
 DRAIN TO STOCKPASS
 18x22 CMP
 24x92 CMP

2700+50
 EQUATION
 P.I. 2698+09.48
 = 2698+17.24

2720+00
 END I 25-3(35) 258
 STA 2720+00
 F.I. 44(4)

2715+80
 24x94 CMP
 REST AREA
 UNDER REST AREA
 RT 2-METAL BARRIERS
 NO. 12 CONC. INLET
 (H=4'-0")

2710+90
 18x22 CMP
 DRAIN TO STOCKPASS
 18x22 CMP
 24x92 CMP

2706+18
 24x92 CMP
 C.M.P. CROSS
 2706+18
 CULVERT

2701+20
 24x92 CMP
 DRAIN TO STOCKPASS
 18x22 CMP
 24x92 CMP

2700+50
 EQUATION
 P.I. 2698+09.48
 = 2698+17.24

2720+00
 END I 25-3(35) 258
 STA 2720+00
 F.I. 44(4)

2715+80
 24x94 CMP
 REST AREA
 UNDER REST AREA
 RT 2-METAL BARRIERS
 NO. 12 CONC. INLET
 (H=4'-0")

2710+90
 18x22 CMP
 DRAIN TO STOCKPASS
 18x22 CMP
 24x92 CMP

2706+18
 24x92 CMP
 C.M.P. CROSS
 2706+18
 CULVERT

2701+20
 24x92 CMP
 DRAIN TO STOCKPASS
 18x22 CMP
 24x92 CMP

2700+50
 EQUATION
 P.I. 2698+09.48
 = 2698+17.24

2720+00
 END I 25-3(35) 258
 STA 2720+00
 F.I. 44(4)

2715+80
 24x94 CMP
 REST AREA
 UNDER REST AREA
 RT 2-METAL BARRIERS
 NO. 12 CONC. INLET
 (H=4'-0")

2710+90
 18x22 CMP
 DRAIN TO STOCKPASS
 18x22 CMP
 24x92 CMP

2706+18
 24x92 CMP
 C.M.P. CROSS
 2706+18
 CULVERT

2701+20
 24x92 CMP
 DRAIN TO STOCKPASS
 18x22 CMP
 24x92 CMP

2700+50
 EQUATION
 P.I. 2698+09.48
 = 2698+17.24

2720+00
 END I 25-3(35) 258
 STA 2720+00
 F.I. 44(4)

2715+80
 24x94 CMP
 REST AREA
 UNDER REST AREA
 RT 2-METAL BARRIERS
 NO. 12 CONC. INLET
 (H=4'-0")

2710+90
 18x22 CMP
 DRAIN TO STOCKPASS
 18x22 CMP
 24x92 CMP

2706+18
 24x92 CMP
 C.M.P. CROSS
 2706+18
 CULVERT

2701+20
 24x92 CMP
 DRAIN TO STOCKPASS
 18x22 CMP
 24x92 CMP

2700+50
 EQUATION
 P.I. 2698+09.48
 = 2698+17.24

2720+00
 END I 25-3(35) 258
 STA 2720+00
 F.I. 44(4)

2715+80
 24x94 CMP
 REST AREA
 UNDER REST AREA
 RT 2-METAL BARRIERS
 NO. 12 CONC. INLET
 (H=4'-0")

2710+90
 18x22 CMP
 DRAIN TO STOCKPASS
 18x22 CMP
 24x92 CMP

2706+18
 24x92 CMP
 C.M.P. CROSS
 2706+18
 CULVERT

2701+20
 24x92 CMP
 DRAIN TO STOCKPASS
 18x22 CMP
 24x92 CMP

2700+50
 EQUATION
 P.I. 2698+09.48
 = 2698+17.24

2720+00
 END I 25-3(35) 258
 STA 2720+00
 F.I. 44(4)

2715+80
 24x94 CMP
 REST AREA
 UNDER REST AREA
 RT 2-METAL BARRIERS
 NO. 12 CONC. INLET
 (H=4'-0")

2710+90
 18x22 CMP
 DRAIN TO STOCKPASS
 18x22 CMP
 24x92 CMP

2706+18
 24x92 CMP
 C.M.P. CROSS
 2706+18
 CULVERT

2701+20
 24x92 CMP
 DRAIN TO STOCKPASS
 18x22 CMP
 24x92 CMP

2700+50
 EQUATION
 P.I. 2698+09.48
 = 2698+17.24

2720+00
 END I 25-3(35) 258
 STA 2720+00
 F.I. 44(4)

2715+80
 24x94 CMP
 REST AREA
 UNDER REST AREA
 RT 2-METAL BARRIERS
 NO. 12 CONC. INLET
 (H=4'-0")

2710+90
 18x22 CMP
 DRAIN TO STOCKPASS
 18x22 CMP
 24x92 CMP

2706+18
 24x92 CMP
 C.M.P. CROSS
 2706+18
 CULVERT

2701+20
 24x92 CMP
 DRAIN TO STOCKPASS
 18x22 CMP
 24x92 CMP

2700+50
 EQUATION
 P.I. 2698+09.48
 = 2698+17.24

2725
 2720
 2715
 2710
 2705
 2700
 2695

PLATE NO. 1

