

See Standard M-100-A for STANDARD SYMBOLS



DIST. IV	FILE	COPY
DIST. ENGR.		
ASST. ENGR.		
CONSTR.		
PRE-CONSTR.		
ERA		
UTIL		
DESIGN		
ROW		
MAT'L'S		
EEO		
RE-PEPS		
MAINT.		
TRAFFIC		

Kessanich
Duncan



STATE DEPARTMENT OF HIGHWAYS DIVISION OF HIGHWAYS - STATE OF COLORADO

FEDERAL AID PROJECT NO. 1 25-3(59)241 STATE HIGHWAY NO. 25 WELD COUNTY

PLAN AND PROFILE OF PROPOSED
AS CONSTRUCTED
STATE HIGHWAY NO. 25
WELD COUNTY

GRADE LINE ON PROFILE IS SHOWN AS GRADE OF FINISHED ROAD

AS CONSTRUCTED PLAN
RETURN TO DIST. 4 DESIGN

NO REVISIONS	REVISED	NO. 1
INDEX OF SHEETS	REVISED	INDEX R.L.M. 1-31-79
AS CONSTRUCTED		
Revised Index R.L.M. 1-31-79		
(Added Sheet No. 414)		
(Added Str. Nos.)		

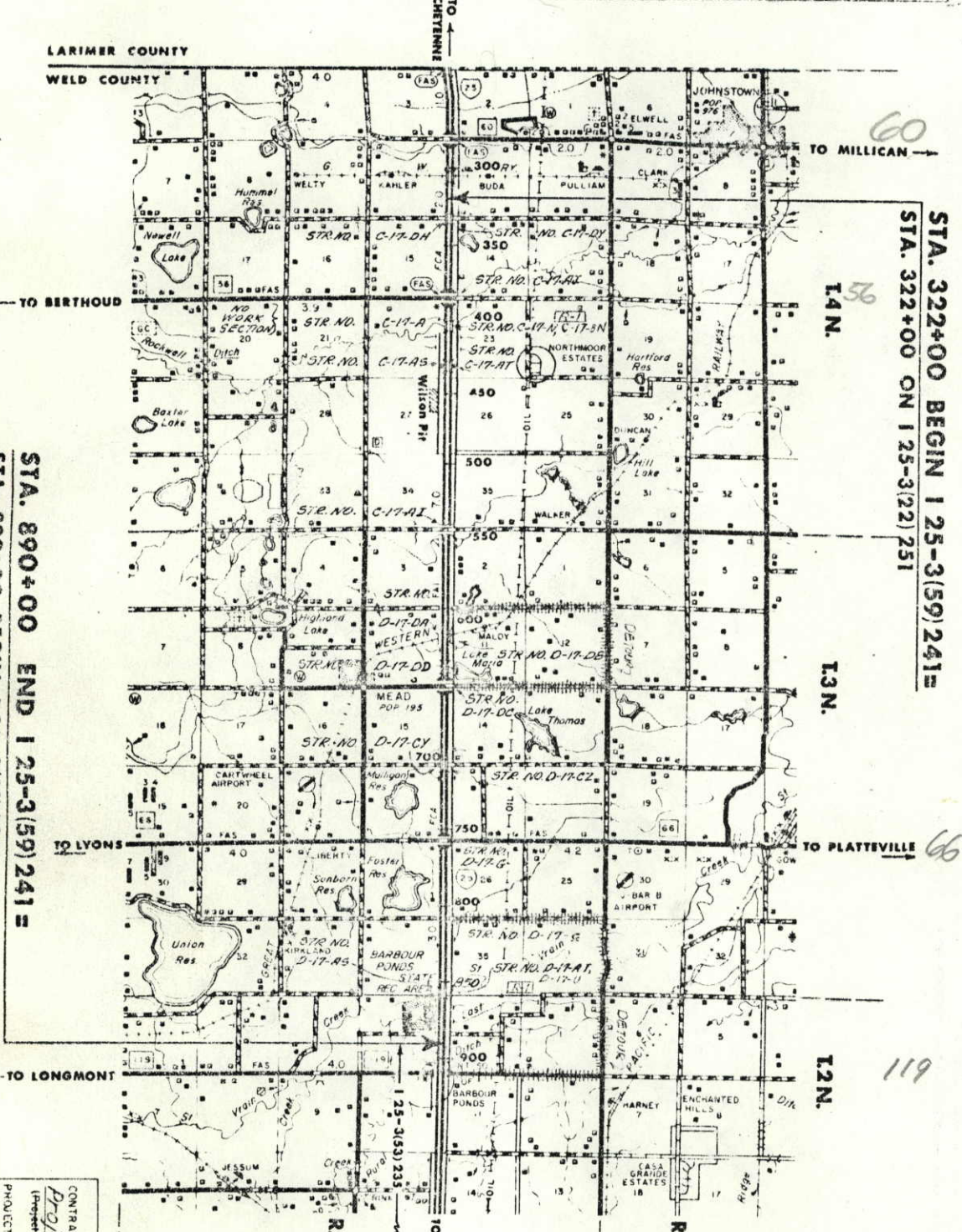
STA. 322+00 BEGIN 1 25-3(59)241 =
STA. 322+00 ON 1 25-3(122)251

TO MILLICAN

TO PLATTEVILLE

TO NORTH GLENN

STATION TO STATION	ROADWAY LIN. FT.	MAJOR STRUCTURE LIN. FT.
322+00 BEGIN 1 25-3(59)241 =		
322+00 ON 1 25-3(122)251		
333+15.7	1,115.7	
334+15.2	99.5	
405+42.6	7,127.4	
407+17.4	174.8	
411+07.9	390.5	
410+72.8	2,280.5	
433+53.3	93.5	
434+49.8	8,483.0	
519+29.8	8,023.8	
519+39.8	1,985.8	
599+43.5	103.3	
599+71.0	2,032.4	
615+56.8	6,365.8	
620+50.1	93.5	
641+15.5	10,646.2	
704+81.3	22.0	
705+74.8	5,164.0	
812+21.0	302.0	
812+43.0	2,291.0	
864+07.0	56,794.7	
867+09.0	23.0	
890+00 END 1 25-3(59)241 =		
890+00 ON 1 25-3(53)235		
TOTALS:	56,794.7	23.0



CONTRACTOR	Bansour Brothers
Project Engineer	R. Patrick Johnson
Project Engineer	L.G. Duncan
Project Started	March 5, 1979
Project Completed	June 18, 1980
AS CONSTRUCTED PLANS	Approved
DATE	10-5-80

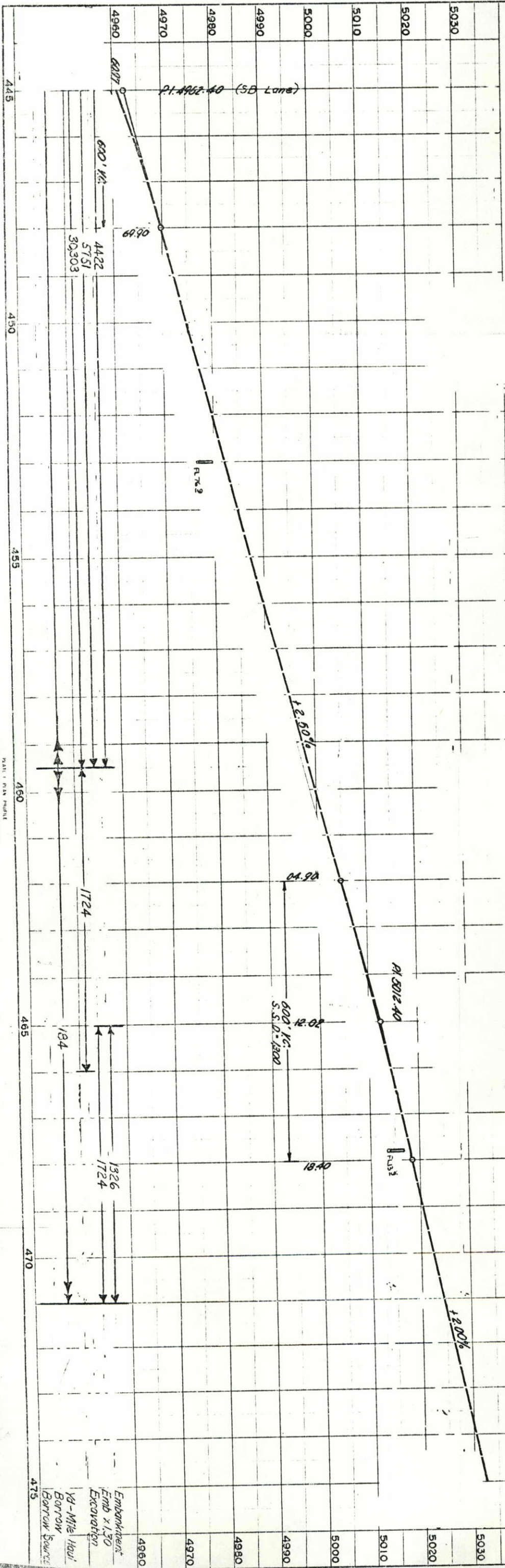
APPROVED
 DIVISION OF HIGHWAYS
 DEPARTMENT OF TRANSPORTATION
 FEDERAL HIGHWAY ADMINISTRATION
 APPROVED
 DATE

SCALE OF MILES

R.L.M.

PROFILE	SURVEYED	BY	DATE
NOTE BOOK	PLOTTED		
	GRADES CHECKED		
	B.M. NOTED		
	STRUCTURE NOTATIONS CHECKED		

SURVEYED	DATE
PLOTTED	
ALIGNMENT CHECKED	
RT. OF WAY CHECKED	



N.E. 1/4 SEC. 27
T. 4 N. R. 68 W.

453+00 ~ Remove (2) End Sections between N.B. Lane and Front Rd. Extend 24" x 64' RCP 16' Rt. Extend 14' 24" x 56' RCP 12' Lt. Req'd. Type "C" Inlet (H=3.0'). Remove (2) End Sections in Median, 20' Extend 24" x 56' RCP 18' Rt. Extend 24" x 54' RCP 26' Lt. Req'd. Type "C" Inlet (H=3.0'). Remove End Section between S.B. Lane and Front Rd. Extend 24" x 54' RCP 12' Rt. Req'd. Type "C" Inlet (H=3.0').

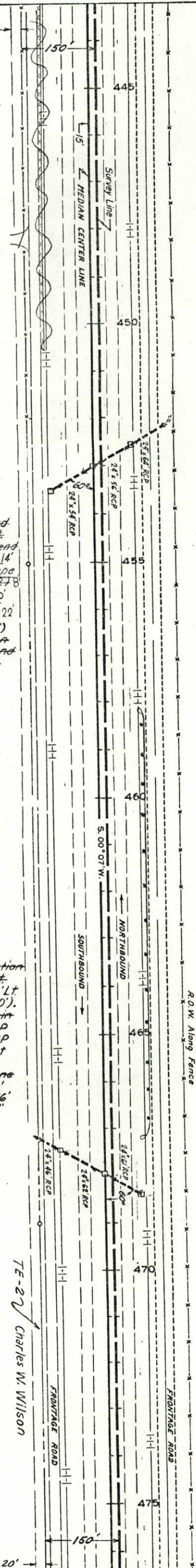
460+ to 493+ ~ Excavate to Dress Fence Area, Rt.

467+80 ~ Remove End Section between N.B. Lane & Front Rd. Extend 24" x 61' RCP 8' Lt. Req'd. Type "C" Inlet (H=3.0'). Remove (2) End Sections in Median, Extend 24" x 61' RCP 22' 20' Rt. Extend 24" x 62' RCP 22' Lt. Req'd. Type "C" Inlet (H=3.0'). Remove (2) End Sections between S.B. Lane & Front Rd. Extend 24" x 62' RCP 12' Rt. Extend 24" x 46' RCP 5' Lt. Req'd. Type "C" Inlet (H=3.0').

S.E. 1/4 SEC. 27
T. 4 N. R. 68 W.

NO REVISIONS	AS CONSTRUCTED	NO. SHEETS	TOTAL SHEETS
<input type="checkbox"/>	<input checked="" type="checkbox"/>	VIII	106
<input type="checkbox"/>	REVISED 6-18-80	COLO	48
<input type="checkbox"/>	VOID	PROJECT NO.	125-359241
		SHEET NO.	48
		TOTAL SHEETS	106

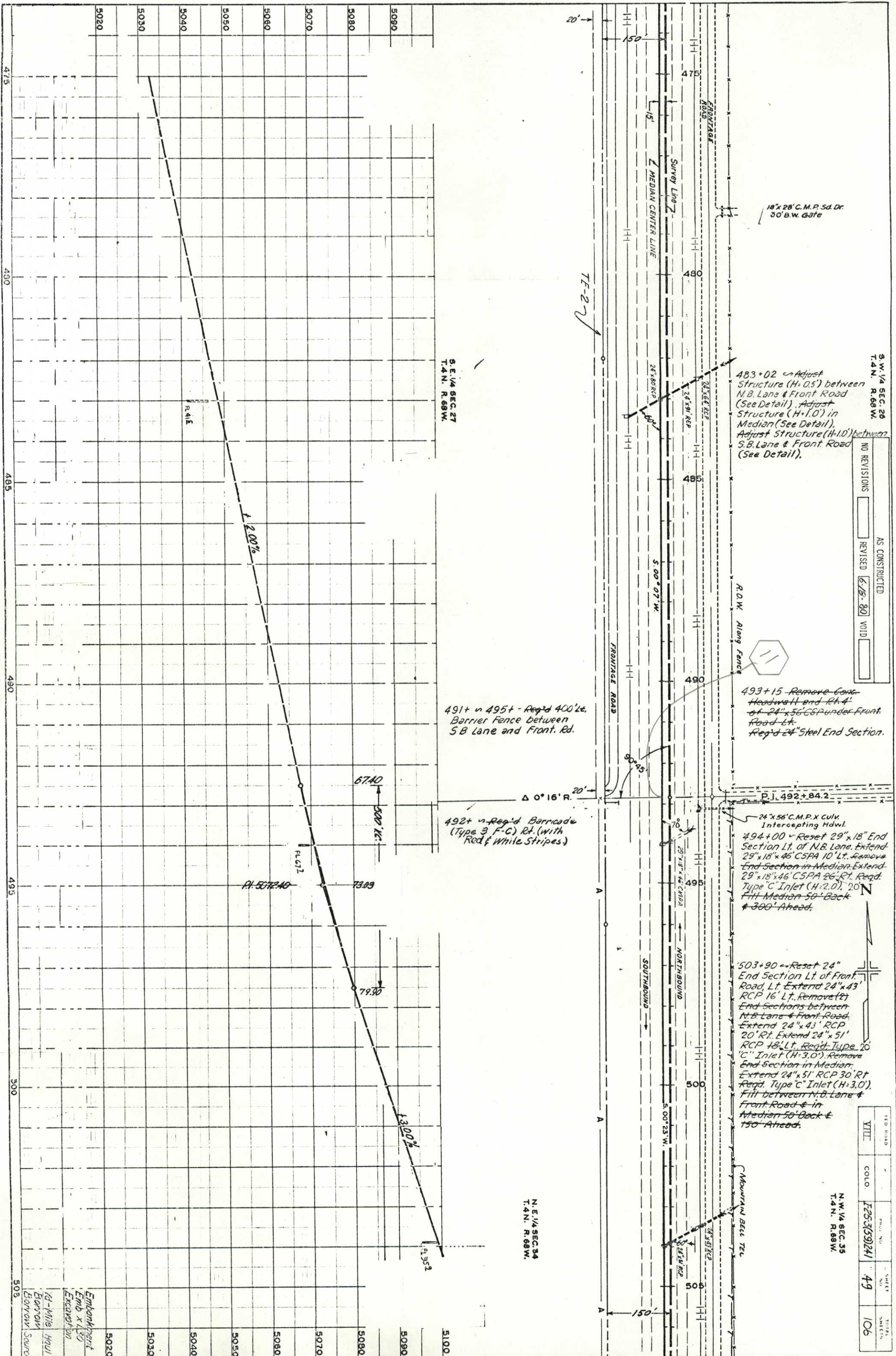
S.W. 1/4 SEC. 26
T. 4 N. R. 68 W.



N.W. 1/4 SEC. 26
T. 4 N. R. 68 W.

PROFILE	SURVEYED	BY	DATE
NOTE BOOK	PLOTTED		
	GRADES CHECKED		
	BY		
	STRUCTURE NOTATIONS CHECKED		

PLAN	SURVEYED	BY	DATE
NOTE BOOK	PLOTTED		
	ALIGNMENT CHECKED		
	RT OF WAY CHECKED		



S.W. 1/4 SEC. 26
T.4N. R.68W.

NO REVISIONS	AS CONSTRUCTED
REVISED	VOID

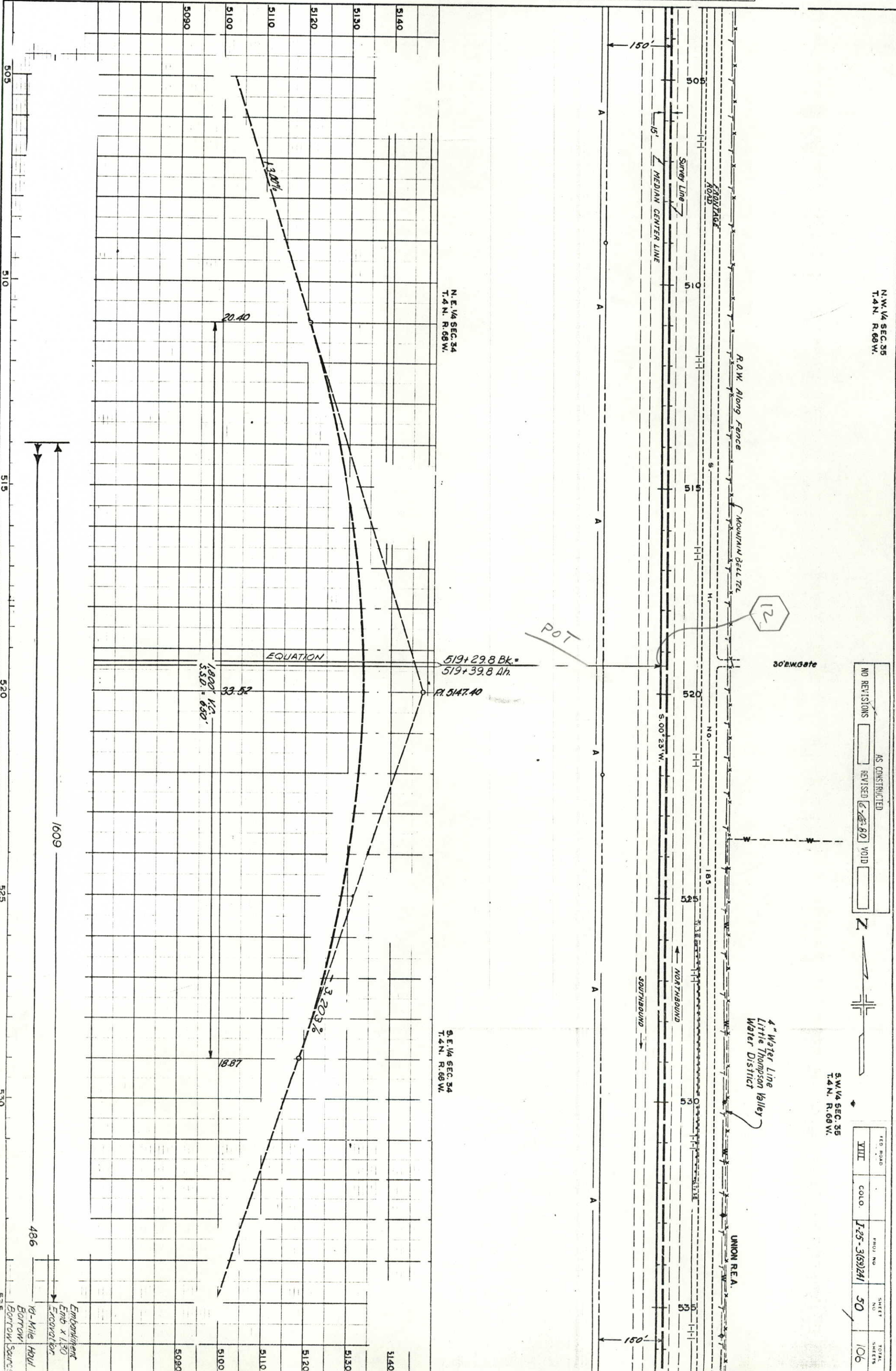
FILE NO.	PROJECT NO.	SHEET NO.	TOTAL SHEETS
VIII	F25-309241	49	106

N.E. 1/4 SEC. 34
T.4N. R.68W.

Embarkment
Emb x 4.30
Excavation
1/2-Mile Haul
Borrow
Borrow Source

PROFILE	SURVEYED	BY	DATE
NOTE BOOK	PLOTTED		
	GRADES CHECKED		
	B. M.'S NOTED		
	STRUCTURE NOTATIONS CHKD.		

PLAN	SURVEYED	BY	DATE
NOTE BOOK	PLOTTED		
	ALIGNMENT CHECKED		
	RT. OF WAY CHECKED		



N.W. 1/4 SEC. 35
T. 4 N. R. 68 W.

NO. REVISIONS	AS CONSTRUCTED
	REVISED
	VOID

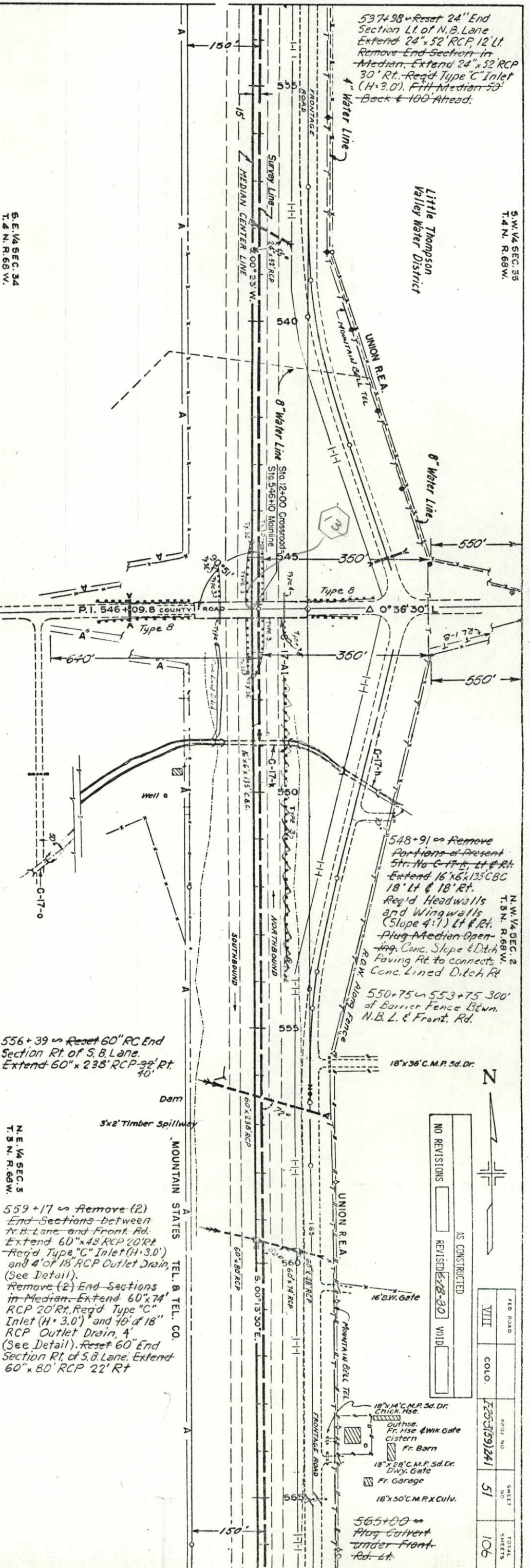
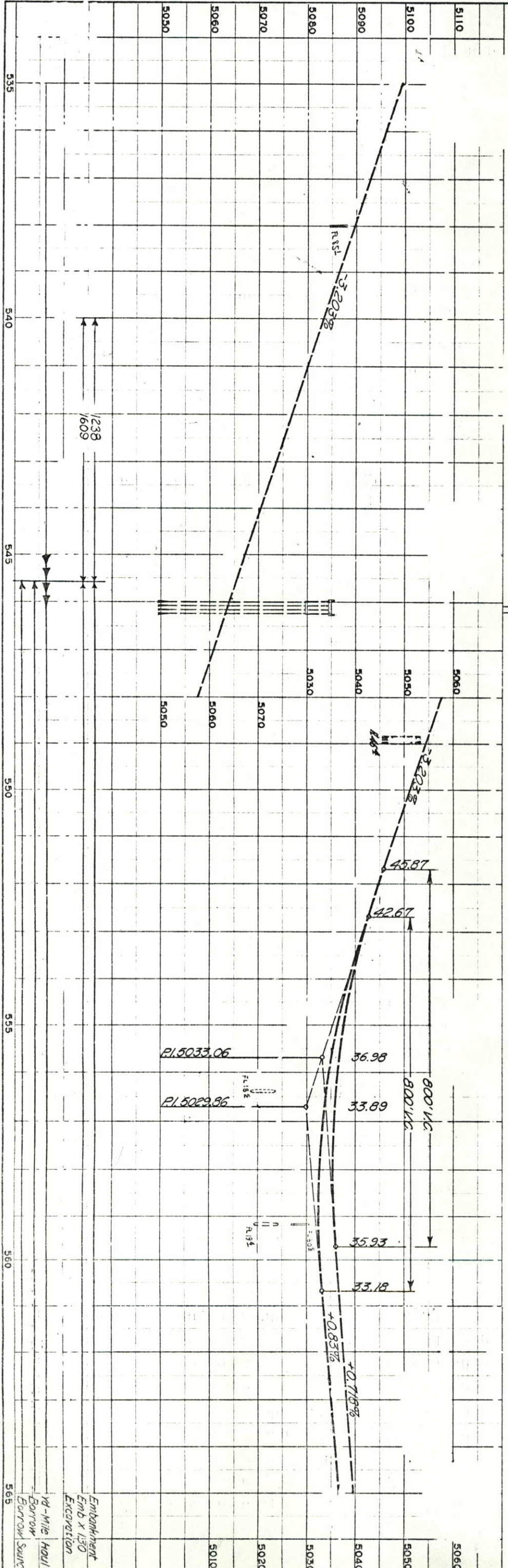


S.W. 1/4 SEC. 35
T. 4 N. R. 68 W.

110 ROAD	PROJ. NO.	SHEET NO.	TOTAL SHEETS
VIII	J-25-3(69)241	50	106

PROFILE	SURVEYED	BY	E
NOTE BOOK	PLOTTED		
NC	GRADES CHECKED		
	B.M.S. NOTED		
	STRUCTURE NOT AT NS CHKD.		

P.	SURVEYED	BY	DATE
NOTE BOOK	PLOTTED		
	ALIGNMENT CHECKED		
	RT. OF WAY CHECKED		



537+98 ~ Reset 24" End Section Lt. of N.B. Lane. Extend 24" x 52' RCP 12' Lt. Remove End Section in Median. Extend 24" x 52' RCP 30' Rt. Req'd Type 'C' Inlet (H=3.0'). Filt Median 53' Back 4-100' Ahead.

548+91 ~ Remove Portions of Present Str. No. C-17-k. Lt & Rt. Extend 16' x 6' x 135' CBC 18' Lt & 18' Rt. Req'd Headwalls and Wingwalls (Slope 4:1) Lt & Rt. Plug Median Opening. Conc. Slope & Ditch Paving Rt. to connect Conc. Lined Ditch Rt. 550+75 ~ 553+75 300' of Barrier Fence Btwn. N.B. L. & Front. Rd.

556+39 ~ Reset 60" RC End Section Rt. of S.B. Lane. Extend 60" x 238' RCP 32' Rt. 70'

559+17 ~ Remove (2) End Sections between N.B. Lane and Front. Rd. Extend 60" x 48' RCP 20' Rt. Req'd Type 'C' Inlet (H=3.0') and 4' of 18" RCP Outlet Drain. (See Detail). Remove (2) End Sections in Median. Extend 60" x 74' RCP 20' Rt. Req'd Type 'C' Inlet (H=3.0') and 16' of 18" RCP Outlet Drain, A. (See Detail). Reset 60" End Section Rt. of S.B. Lane. Extend 60" x 80' RCP 22' Rt

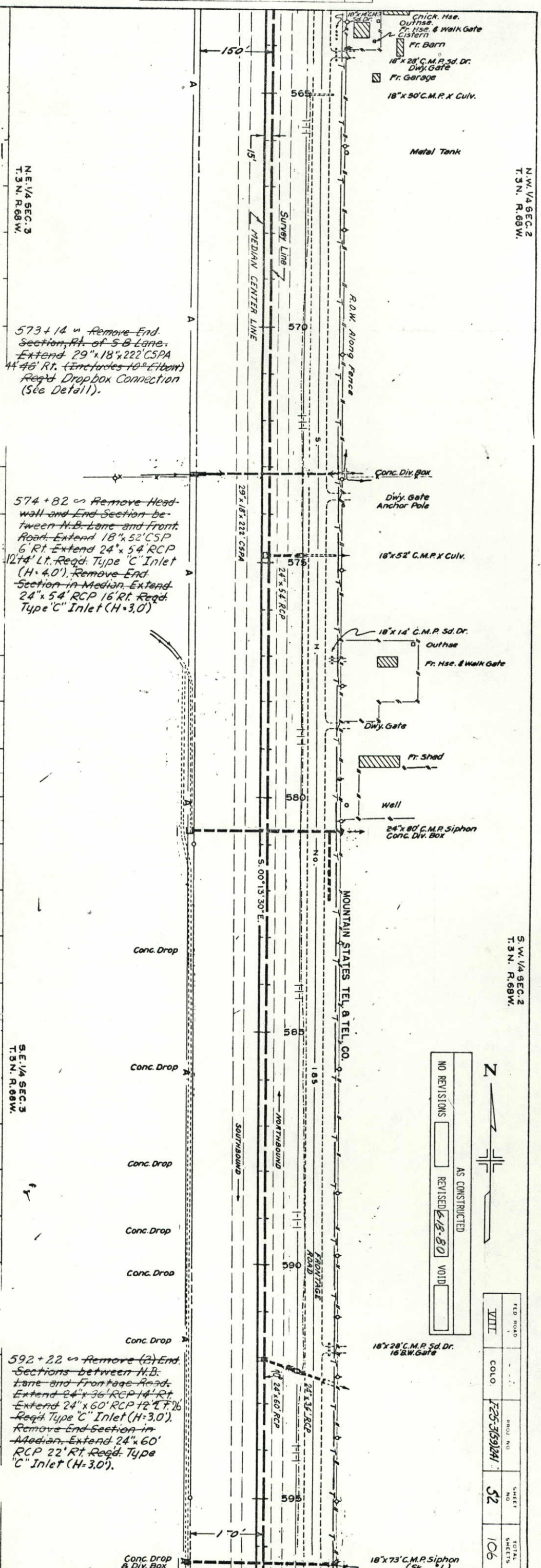
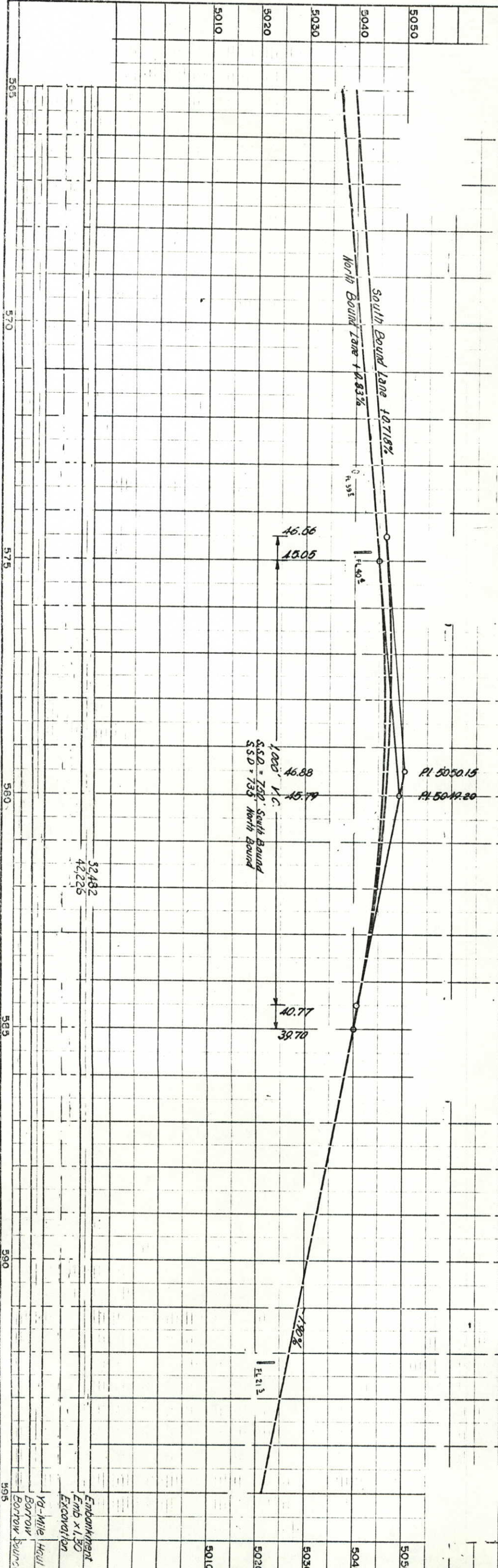
NO REVISIONS	AS CONSTRUCTED
REVISED 5-2-30	
VOID	

FED. ROAD	VIII	NO.	51	TOTAL SHEETS	106
COLO.	725-3(59)241	SHEET NO.	51		

MADE IN U.S.A. PRINTED IN U.S.A.

PROFILE	SURVEYED	BY	E
NOTE BOOK	PLOTTED		
NO.	GRADES CHECKED		
	S. M'S. NOTED		
	STRUCTURE NOTATIONS CHECKED		

PLAN	SURVEYED	BY		DATE
NOTE BOOK	PLOTTED			
NO.	ALIGNMENT CHECKED			
	RT. OF WAY CHECKED			



573+14 ~ Remove End Section, Pt. of S-B Lane. Extend 29"x18" 222' CSPA 4' 46" Rt. (Includes 10" Elbow) Reg'd Drop box Connection (See Detail).

574+82 ~ Remove Headwall and End Section between N.B. Lane and Front Road. Extend 18"x52' CSP 6' Rt. Extend 24"x54' RCP 12' Lt. Reg'd. Type "C" Inlet (H=4.0'). Remove End Section in Median. Extend 24"x54' RCP 16' Rt. Reg'd. Type "C" Inlet (H=3.0')

592+22 ~ Remove (3) End Sections between N.B. Lane and Frontage Road. Extend 24"x36' RCP 14' Rt. Extend 24"x60' RCP 12' Lt. 16' Reg'd. Type "C" Inlet (H=3.0'). Remove End Section in Median. Extend 24"x60' RCP 22' Rt. Reg'd. Type "C" Inlet (H=3.0').

N.W. 1/4 SEC. 2
T. 3N. R. 68W.

S.W. 1/4 SEC. 2
T. 3N. R. 68W.



NO REVISIONS	AS CONSTRUCTED
REVISIONS	REVISED 6-8-80
VOID	

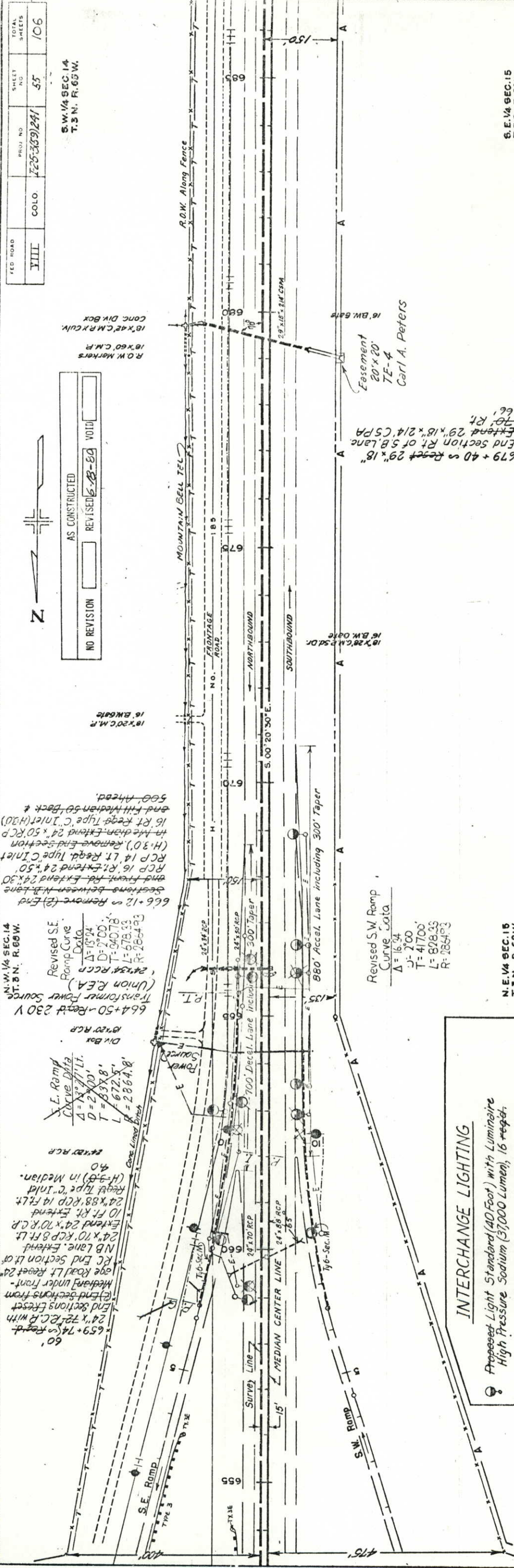
FED. ROAD	VIII
COLO.	1235-3591241
PROJ. NO.	52
SHEET NO.	106
TOTAL SHEETS	

FED ROAD	YIII	COLO.	225-369/241	SHEET NO.	55	TOTAL SHEETS	106
----------	------	-------	-------------	-----------	----	--------------	-----

S.W. 1/4 SEC. 14
T.3 N. R. 68 W.



NO REVISION	AS CONSTRUCTED
REVISION	REVISED
VOID	VOID

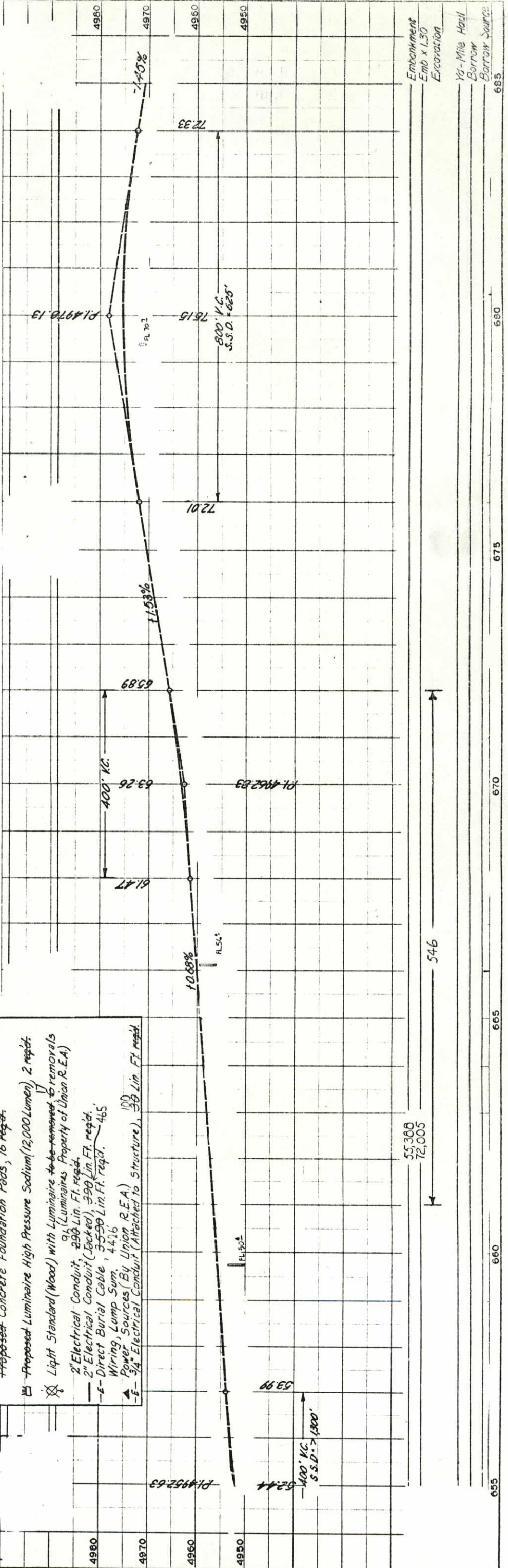


Revised S.W. Ramp
Curve Data
 $\Delta = 16.74$
 $J = 2.00$
 $T = 417.00'$
 $L = 808.33'$
 $R = 2864.03'$

666+12 on Remove (E) End
 Sections between NB Lane
 and Front Rd. Extend 24' x 30'
 RCP 16' Lt. Regd. Type C Inlet
 RCP 14' Lt. Regd. Type C Inlet
 (H-30). Remove End Section
 in the diam. Extend 24' x 50' RCP
 16' Rt. Regd. Type C Inlet (H-30)
 and fill Median 50' Back &
 500' Ahead.

INTERCHANGE LIGHTING

- Proposed Light Standard (40 Foot) with Luminaire High Pressure Sodium (37,000 Lumen), 16 reqd.
- Proposed Concrete Foundation Pads, 16 reqd.
- Proposed Luminaire High Pressure Sodium (12,000 Lumen), 2 reqd.
- Light Standard (Wood) with Luminaire to be removed & removals (Luminaires Property of Union R.E.A.)
- 2" Electrical Conduit, 290 Lin. Ft. reqd.
- 2" Electrical Conduit (Jacked), 390 Lin. Ft. reqd.
- 4" Direct Burial Cable, 3,550 Lin. Ft. reqd.
- Wiring, Lump Sum, 44.76
- Power Sources (By Union R.E.A.) 100 Lin. Ft. reqd.
- 3/4" Electrical Conduit (Attached to Structure), 30 Lin. Ft. reqd.



N.E. 1/4 SEC. 15
T.5 N. R. 68 W.

55,368
72,005

Embankment
Emb x L30

Excavation

1/2-Mile Haul
Borrow

Borrow Source

DATE	BY	DATE	BY

