

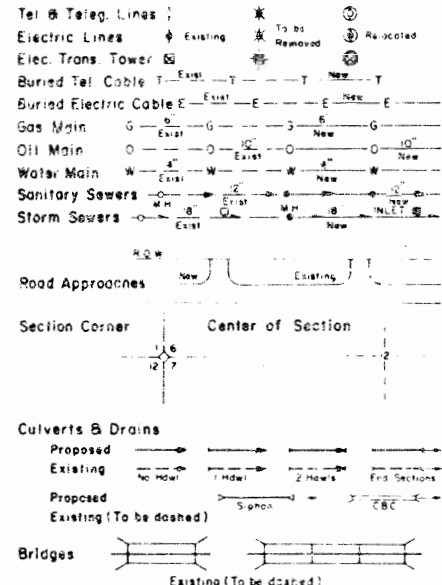
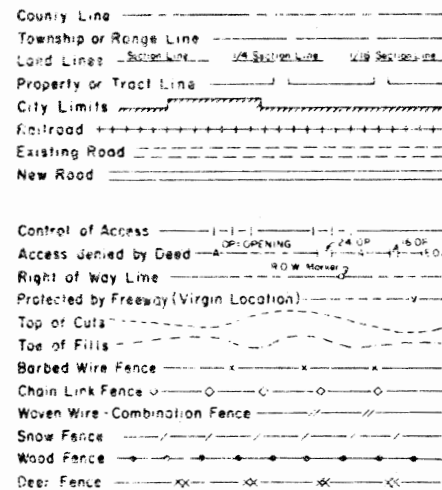
# STATE DEPARTMENT OF HIGHWAYS DIVISION OF HIGHWAYS—STATE OF COLORADO

FEDERAL ROAD ACTION NO.	DIVISION	PROJECT NO.	SHEET NO.
III	COLORADO	170-1(45) Sec. 3	1

RIGHT OF WAY DEBEQUE CANYON TO WEST OF RIFLE

REVISIONS			
NO.	DATE	BY	CDR

## CONVENTIONAL SIGNS



## PLAN AND PROFILE OF PROPOSED FEDERAL AID PROJECT NO. 170-1(45) Sec. 3 STATE HIGHWAY NO. 70 GARFIELD COUNTY RIGHT OF WAY

SCALE OF ORIGINAL DRAWINGS  
PLAN SHEETS 1" = 100'  
DETAIL SHEETS 1" = 100'  
OWNERSHIP MAPS 1" = 1,705' APPROX.

R.O.W. LENGTH OF PROJECT = 11,408 FT. (2.161 MILES)

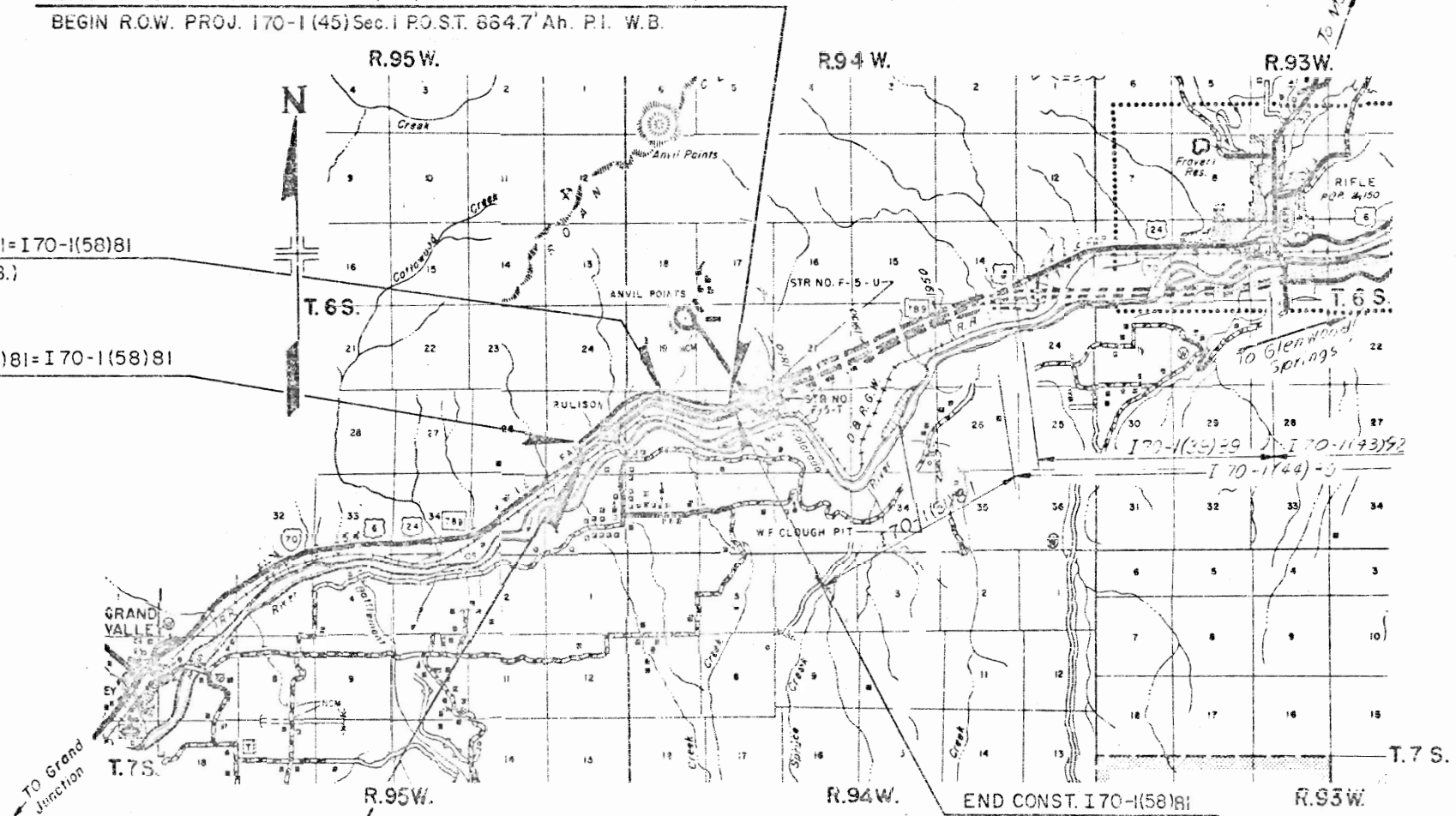
### INDEX OF SHEETS

SHEET NO.	TITLE
1	TITLE SHEET
2-2A	TABULATION OF PROPERTIES
3-7	ALIGNMENT SHEETS
8	DETAIL SHEET
9	TOTAL OWNERSHIP SHEET

END R.O.W. PROJ. 170-1(45) Sec. 3 P.O.S.T. 959.4' Ah. P.I. 1770+42.6 (E.B.)  
BEGIN R.O.W. PROJ. 170-1(45) Sec. 1 P.O.S.T. 864.7' Ah. P.I. W.B.

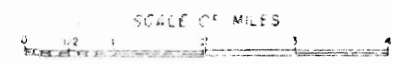
END CONST 170-1(50)81 = 170-1(58)81  
STA. 1743+00 (E.B. & W.B.)

BEGIN CONST 170-1(50)81 = 170-1(58)81  
STA. 1676+15.21 (E.B.)



BEGIN R.O.W. PROJ. 170-1(45) Sec. 3 P.O.S.T. 1666+75.12 (E.B.) =  
END R.O.W. 170-1(45) Sec. 4, P.O.S.T. 1666+75.12 (E.B.) =  
BEGIN CONST. 170-1(58)81 STA. 1666+79.5 (E.B.)

END CONST. 170-1(58)81  
STA. 1790+00 (E.B. & W.B.)



DIVISION OF HIGHWAYS

APPROVED: *John D. Cox* 2/24/77  
RES. CHIEF ENGINEER DATE

DEPARTMENT OF TRANSPORTATION  
FEDERAL HIGHWAY ADMINISTRATION

APPROVED: \_\_\_\_\_ DATE \_\_\_\_\_

DIVISION ADMINISTRATOR

R. O. W. TABULATION OF PROPERTIES IN GARFIELD COUNTY S.H. NO. 70 PROJ. I 70-1(45) SEC. 3

*Design*

FEDERAL AID REGION NO.	DIVISION	PRO. DIST. NO.	SHEET NO.
	COLORADO	I 70-1(45) Sec. 3	2

RIGHT OF WAY DEBEQUE CANYON TO WEST OF RIFLE

PARCEL NO.	OWNER	ADDRESS	LOCATION	AREA IN ACRES				PARCEL NO.	REMARKS
				PARCEL	TO BE ACQUIRED	REMAINDER			
						LEFT	RIGHT		
			T. 6 S., 6th P.M.						
301 <sup>Rev</sup>	ANVIL POINT PROPERTIES, LIMITED, A COLORADO LIMITED PARTNERSHIP	103 WEST, FIRST NATIONAL BANK BUILDING PUEBLO, COLORADO 81002	E. 1/2 SW 1/4, LOTS 1 & 2 & S. 1/2 NE 1/4 SEC. 25 R. 95 W. and LOTS 1 & 2 & N. 1/2 SEC. 30 & NW 1/4 NW 1/4 SEC. 29 R. 94 W.	139.048	139.048	266.6	160.6	301 <sup>Rev</sup>	PERMANENT EASEMENTS 3-7-78 Add E-301 Rev. B TE-305 D.J. 4-2-78 Rev E-301 Rev. B TE-305 D.J. --- Add E-301A --- 5-9-78 Add E-303 D.J.F. 7-7-78 Add E-303 B D.J. 11-2-78 Add E-301C E-301D E-301E --- --- Rev. B --- CDB 12-30 Rev E-301 B E-301 Rev. 2 CAZ E-301 Deleted PE 300 D.J.Z.
302	UNITED STATES OF AMERICA (B. L. M.)		SW 1/4 NW 1/4 SEC. 29 T. 6 S., R. 94 W., 6th P.M.	17.071	17.071				
303	FIRST NATIONAL BANK OF GRAND JUNCTION, TRUSTEE	464 MAIN STREET GRAND JUNCTION, COLO. 81501	LOT 1 SEC. 25 R. 95 W.	0.543	0.543	0	81.9	303	
304	ANVIL POINT PROPERTIES, LIMITED, A COLORADO LIMITED PARTNERSHIP	103 WEST, FIRST NATIONAL BANK BUILDING PUEBLO, COLORADO 81002	SE 1/4 NE 1/4 B LOT 1 SEC. 25 R. 95 W.	0.490	0.490	SEE PARCEL 301		304	
PERMANENT EASEMENTS									
ER-300	DENVER & RIO GRANDE WESTERN R. R.		SE 1/4 NE 1/4 & LOT 1 SEC. 25 R. 95 W.	1.285	1.285			ER-300	RAILROAD CROSSING EASEMENT
PE-300	DELETED							PE-300	DELETED
E-301 <sup>Rev 3</sup>	ANVIL POINT PROPERTIES, LIMITED, A COLORADO LIMITED PARTNERSHIP	103 WEST, FIRST NATIONAL BANK BUILDING PUEBLO, COLORADO 81002	LOT 2, SW 1/4 NE 1/4, SEC. 25 R. 95 W.	6.486	6.486			E-301 <sup>Rev 3</sup>	CHANNEL CHANGE
E-301A	ANVIL POINT PROPERTIES, LIMITED, A COLORADO LIMITED PARTNERSHIP	103 WEST, FIRST NATIONAL BANK BUILDING PUEBLO, COLORADO 81002	NE 1/4 NE 1/4 SEC. 25 R. 95 W.	0.479	0.479			E-301A	CHANNEL CHANGE
E-301 <sup>B Rev</sup>	ANVIL POINT PROPERTIES, LIMITED, A COLORADO LIMITED PARTNERSHIP	103 WEST, FIRST NATIONAL BANK BUILDING PUEBLO, COLORADO 81002	SW 1/4 NE 1/4 SEC. 25 R. 95 W.	1.223	1.223			E-301 <sup>B Rev</sup>	FOR CONSTRUCTION OF AN ACCESS ROAD
E-301C	ANVIL POINT PROPERTIES, LIMITED, A COLORADO LIMITED PARTNERSHIP	103 WEST, FIRST NATIONAL BANK BUILDING PUEBLO, COLORADO 81002	NE 1/4 & SW 1/4 & LOT 2 SEC. 25, R. 95 W.	2.517	2.517			E-301C	TO BE CONVEYED TO PUBLIC SERVICE CO. OF COLO. FOR POWER LINE
E-301D	ANVIL POINT PROPERTIES, LIMITED, A COLORADO LIMITED PARTNERSHIP	103 WEST, FIRST NATIONAL BANK BUILDING PUEBLO, COLORADO 81002	NE 1/4 & NW 1/4 & LOT 1 SEC. 30 R. 94 W.	3.436	3.436			E-301D	TO BE CONVEYED TO PUBLIC SERVICE CO. OF COLO. FOR POWER LINE
E-301E	ANVIL POINT PROPERTIES, LIMITED, A COLORADO LIMITED PARTNERSHIP	103 WEST, FIRST NATIONAL BANK BUILDING PUEBLO, COLORADO 81002	NW 1/4 SEC. 29 R. 94 W.	0.904	0.904			E-301E	TO BE CONVEYED TO PUBLIC SERVICE CO. OF COLO. FOR POWER LINE
E-303	FIRST NATIONAL BANK OF GRAND JUNCTION, TRUSTEE	464 MAIN STREET, GRAND JUNCTION, COLO. 81501	LOT 2 SEC. 25 R. 95 W.	0.069	0.069			E-303	FOR DRAINAGE CHANNEL

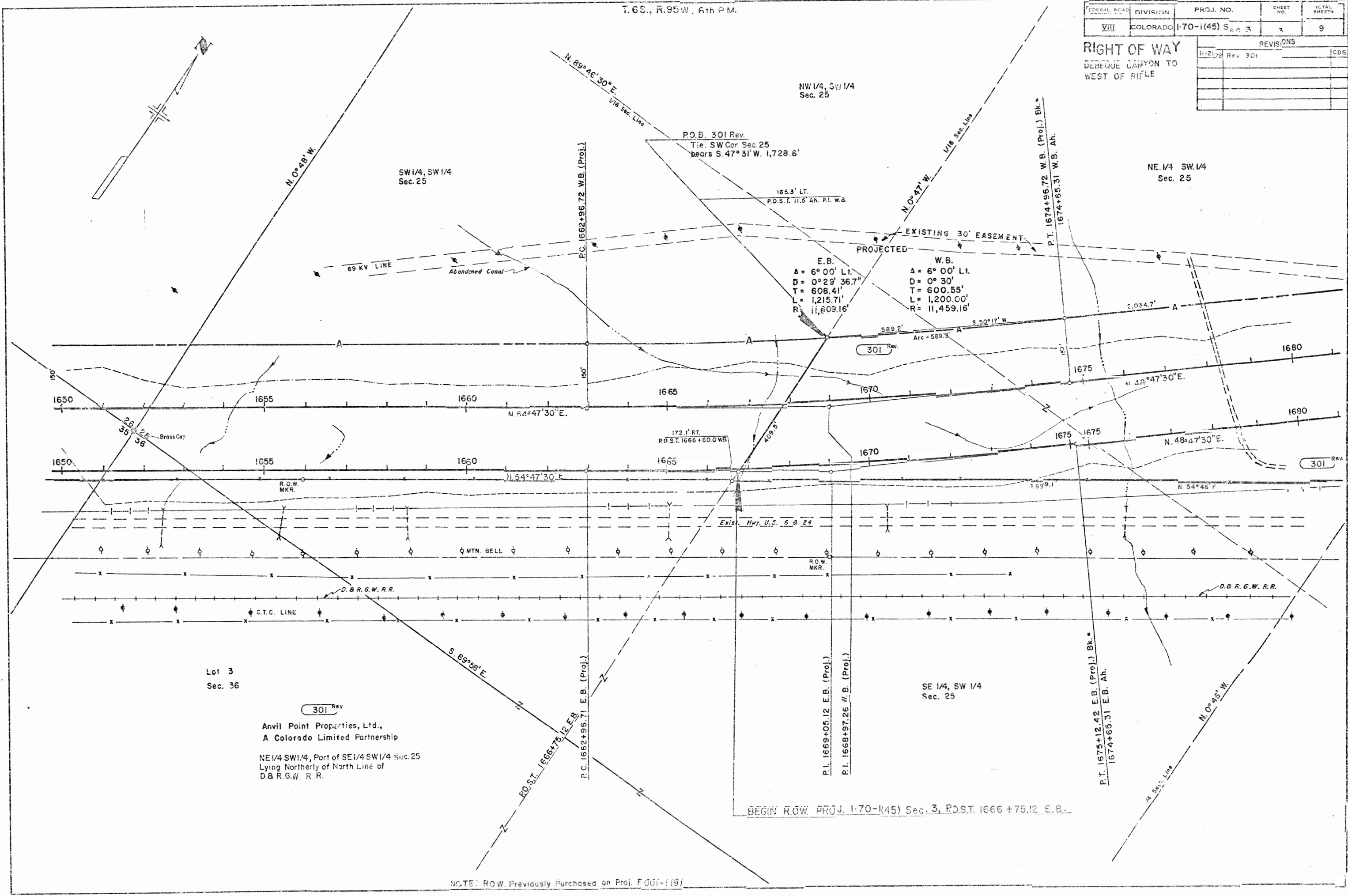


T.6S., R.95W., 6th P.M.

FEDERAL ROAD DISTRICT	DIVISION	PROJ. NO.	SHEET NO.	TOTAL SHEETS
VIII	COLORADO	1-70-1(45) Sec. 3	7	9

REVISIONS	
11-21-78	Rev. 301

**RIGHT OF WAY**  
 DEBEQUE CANYON TO  
 WEST OF RIFLE



Lot 3  
 Sec. 36

301 Rev.  
 Anvil Point Properties, Ltd.,  
 A Colorado Limited Partnership  
 NE 1/4 SW 1/4, Part of SE 1/4 SW 1/4 Sec. 25  
 Lying Northerly of North Line of  
 D.B.R.G.W. R.R.

BEGIN ROW PROJ. 1-70-1(45) Sec. 3, P.O.S.T. 1666 + 75.12 E.B.

NOTE: ROW Previously Purchased on Proj. F 001-1(9)

REVISIONS		FEDERAL ROAD REGION NO.	DIVISION	PROJ. NO.	SHEET NO.	TOTAL SHEETS
3-17-78	Rev. E-301					
4-12-78	Rev. E-301 Rev.					
5-9-78	Added E-303 & C.B.C.s					
7-10-78	Add E-301B					
11-21-78	Rev. 301, Add E-301C					
11-25-80	Rev. E-301 Rev 2 & E-301B					
6/29/81	Delete T-ER-300-A					

# RIGHT OF WAY

## DEBEQUE CANYON TO WEST OF RIFLE

**E-301-C** Anvil Point Properties, Ltd.  
A Colorado Limited Partnership  
To be conveyed to  
Public Service Co. of Colorado

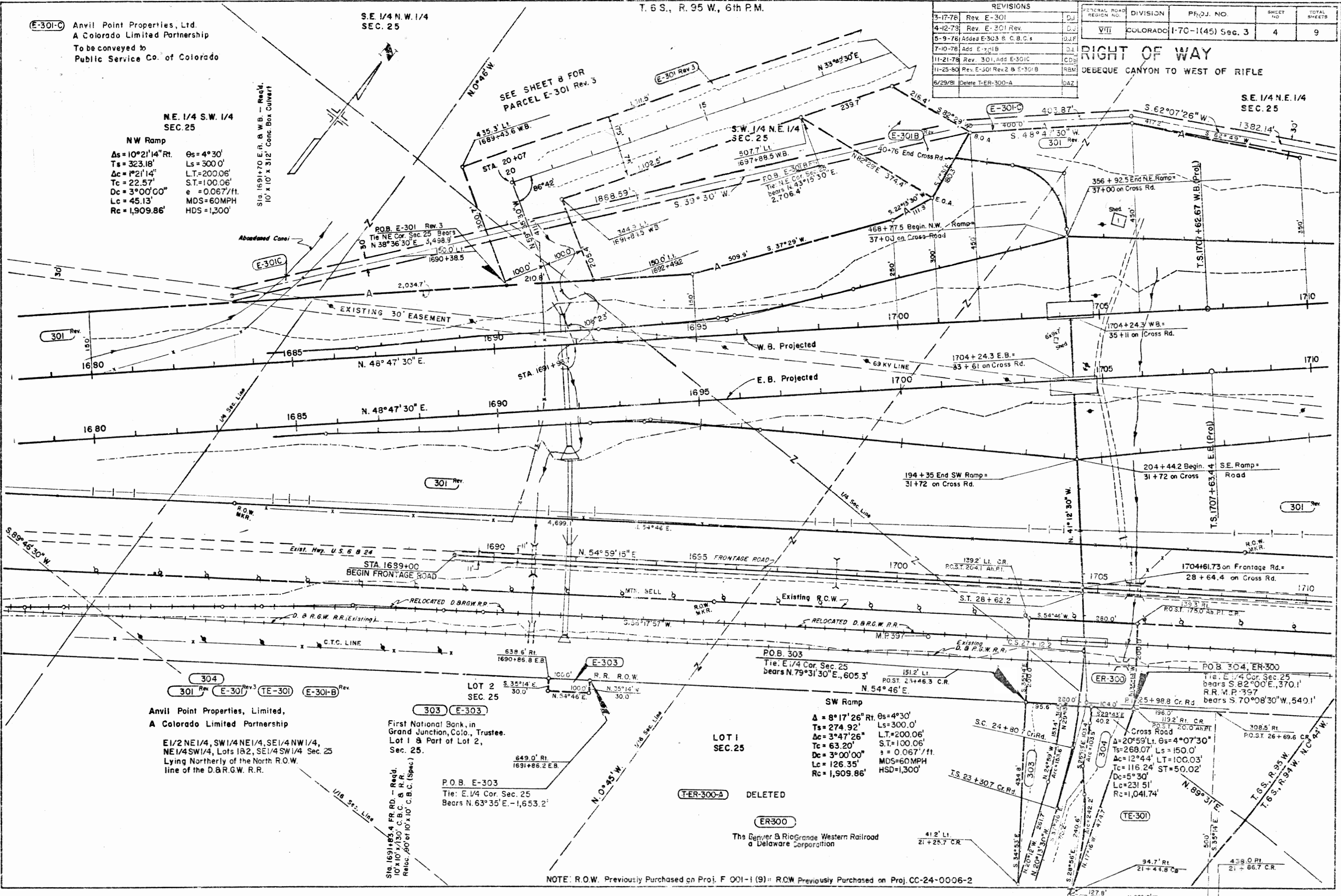
N.E. 1/4 S.W. 1/4  
SEC. 25

**NW Ramp**  
 $\Delta s = 10^{\circ}21'14''$  Rt.  $\Theta s = 4^{\circ}30'$   
 $Ts = 323.18'$   $Ls = 300.0'$   
 $\Delta c = 1^{\circ}21'14''$   $L.T. = 200.06'$   
 $Tc = 22.57'$   $S.T. = 100.06'$   
 $Dc = 3^{\circ}00'00''$   $e = 0.067/ft.$   
 $Lc = 45.13'$   $MDS = 60MPH$   
 $Rc = 1,909.86'$   $HDS = 1,300'$

Sta. 1691+70 E.R. & W.B. - Reqd.  
10' x 10' x 312' Conc. Box Culvert

SE 1/4 N.W. 1/4  
SEC. 25

SEE SHEET 8 FOR  
PARCEL E-301 Rev. 3



Anvil Point Properties, Limited,  
A Colorado Limited Partnership  
E1/2 NE 1/4, SW 1/4 NE 1/4, SE 1/4 NW 1/4,  
NE 1/4 SW 1/4, Lots 1 & 2, SE 1/4 SW 1/4 Sec. 25  
Lying Northerly of the North R.O.W.  
line of the D.&R.G.W. R.R.

First National Bank, in  
Grand Junction, Colo., Trustee.  
Lot 1 & Part of Lot 2,  
Sec. 25.

Sta. 1691+85.4 FR. RD. - Reqd.  
10' x 10' x 130' C.B.C. & R.R.  
Reloc. 90' of 10' x 10' C.B.C. (Spec)

P.O.B. E-303  
Tie: E. 1/4 Cor. Sec. 25  
Bears N. 63° 35' E. - 1,653.2'

**SW Ramp**  
 $\Delta = 8^{\circ}17'26''$  Rt.  $\Theta s = 4^{\circ}30'$   
 $Ts = 274.92'$   $Ls = 300.0'$   
 $\Delta c = 3^{\circ}47'26''$   $L.T. = 200.06'$   
 $Tc = 63.20'$   $S.T. = 100.06'$   
 $Dc = 3^{\circ}00'00''$   $e = 0.067/ft.$   
 $Lc = 126.35'$   $MDS = 60MPH$   
 $Rc = 1,909.86'$   $HSD = 1,300'$

**T-ER-300-A** DELETED

**ER300**

The Denver & Rio Grande Western Railroad  
a Delaware Corporation

NOTE: R.O.W. Previously Purchased on Proj. F 001-1 (9) R.O.W. Previously Purchased on Proj. CC-24-0006-2

T.6S., R.95W., 6th P.M.

T.6S., R.94W., 6th P.M.

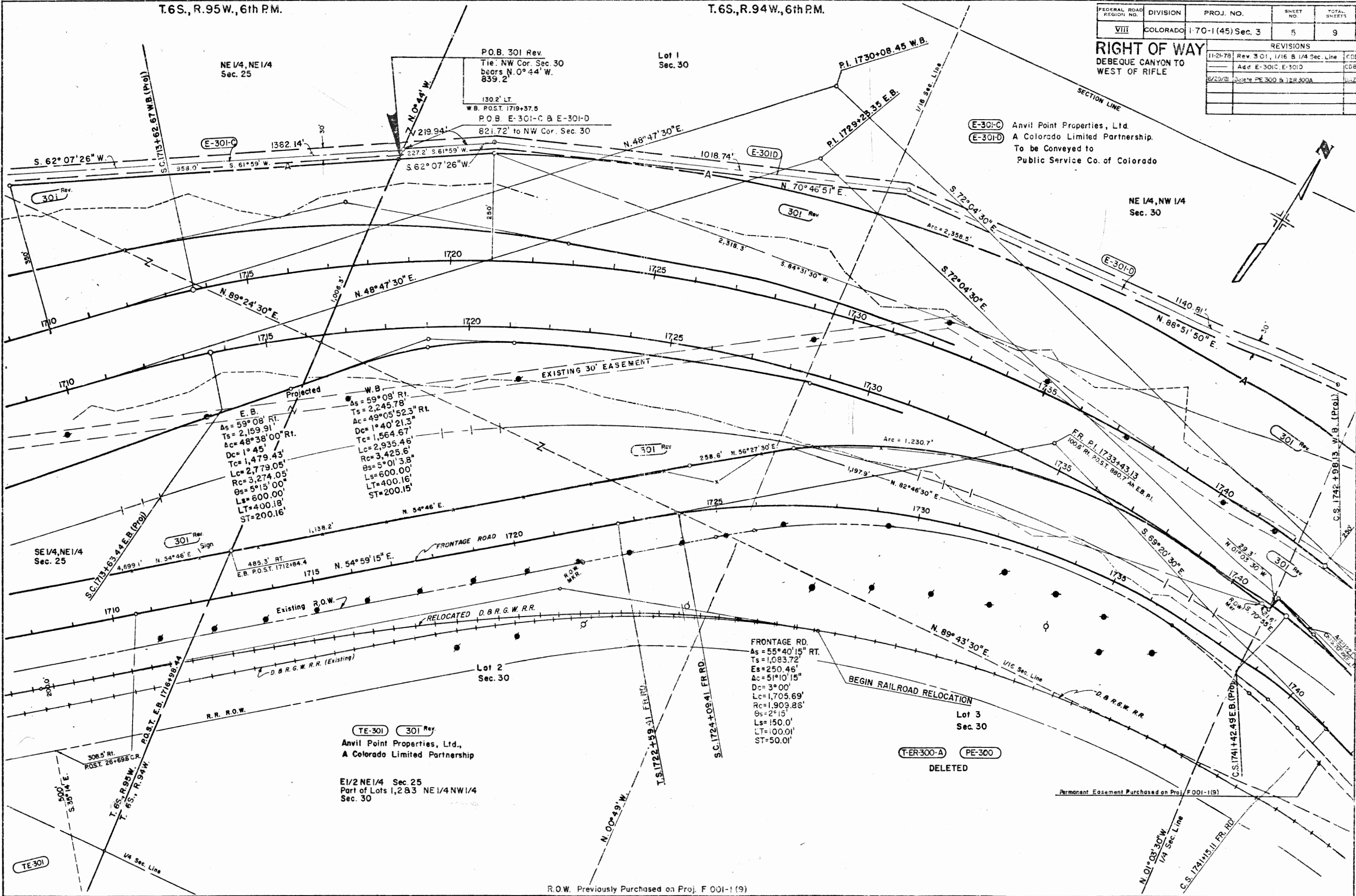
FEDERAL ROAD REGION NO.	DIVISION	PROJ. NO.	SHEET NO.	TOTAL SHEETS
VIII	COLORADO	1-70-1(45) Sec. 3	5	9

REVISIONS	
11-21-78	Rev. 301, 1/16 & 1/4 Sec. Line
	Add E-301C, E-301D
6/29/81	Delete PE 300 & 12R 300A

**RIGHT OF WAY**  
 DEBEQUE CANYON TO WEST OF RIFLE

**E-301-C** Anvil Point Properties, Ltd.  
**E-301-D** A Colorado Limited Partnership.  
 To be Conveyed to  
 Public Service Co. of Colorado



**TE-301** **301 Rev.**  
 Anvil Point Properties, Ltd.,  
 A Colorado Limited Partnership

E1/2 NE 1/4 Sec 25  
 Part of Lots 1, 2 & 3 NE 1/4 NW 1/4  
 Sec. 30

**FRONTAGE RD.**  
 As = 55° 40' 15" RT.  
 Ts = 1,083.72'  
 Es = 250.46'  
 Ac = 51° 10' 15"  
 Dc = 3° 00'  
 Lc = 1,705.69'  
 Rc = 1,909.88'  
 Os = 2° 15'  
 Ls = 150.0'  
 LT = 100.01'  
 ST = 50.01'

**TE-ER-300-A** **PE-300**  
 DELETED

R.O.W. Previously Purchased on Proj. F 001-1 (9)

**E-301-D** **E-301-E** Anvil Point Properties, Ltd.  
A Colorado Limited Partnership  
To be conveyed to  
Public Service Co. of Colorado

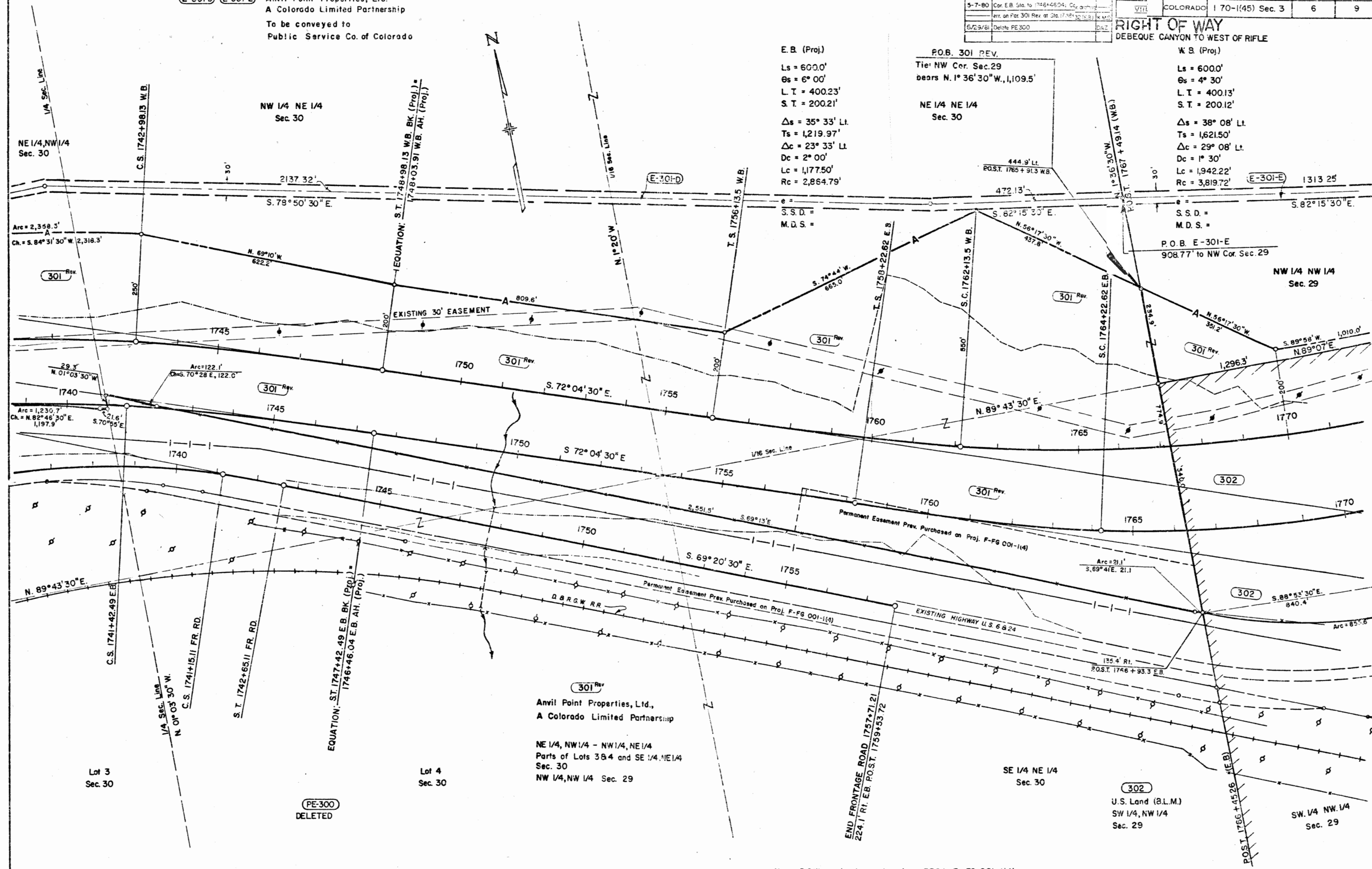
REVISIONS			FEDERAL ROAD REGION NO.	DIVISION	PROJ. NO.	SHEET NO.	TOTAL SHEETS
11-21-78	Rev. 301, Add E-301-D & E-301-E	CDP	VIII	COLORADO	170-1(45) Sec. 3	6	9
5-7-80	Cor. E.B. Sta. to 1746+46.04, Cor. AH.	CDP					
	err. on Pat. 301 Rev. at Sta. 1746+30.13	CDP					
5/29/81	Delete PE-300	DAZ					

**RIGHT OF WAY**  
DEBEQUE CANYON TO WEST OF RIFLE

**E. B. (Proj.)**  
Ls = 600.0'  
Os = 6° 00'  
L T = 400.23'  
S. T. = 200.21'  
Δs = 35° 33' Lt.  
Ts = 1,219.97'  
Δc = 23° 33' Lt.  
Dc = 2° 00'  
Lc = 1,177.50'  
Rc = 2,864.79'

**P.O.B. 301 REV.**  
Tie: NW Cor. Sec. 29  
bears N. 1° 36' 30" W., 1,109.5'  
  
NE 1/4 NE 1/4  
Sec. 30

**W. B. (Proj.)**  
Ls = 600.0'  
Os = 4° 30'  
L T = 400.13'  
S. T. = 200.12'  
Δs = 38° 08' Lt.  
Ts = 1,621.50'  
Δc = 29° 08' Lt.  
Dc = 1° 30'  
Lc = 1,942.22'  
Rc = 3,819.72'



**301 Rev**  
Anvil Point Properties, Ltd.,  
A Colorado Limited Partnership  
  
NE 1/4, NW 1/4 - NW 1/4, NE 1/4  
Parts of Lots 3 & 4 and SE 1/4, NE 1/4  
Sec. 30  
NW 1/4, NW 1/4 Sec. 29

**PE-300**  
DELETED

**302**  
U.S. Land (B.L.M.)  
SW 1/4, NW 1/4  
Sec. 29

Note: R.O.W. previously purchased on PROJ. F-FG 001-1(4)

T. 6 S., R. 94 W., 6th P.M.

FEDERAL ROAD DISTRICT NO.	DIVISION	PROJ. NO.	SHEET NO.	TOTAL SHEETS
VIII	COLORADO	170-1(45) SEC 3	7	9

REVISIONS	
11-21-78	REV 301, Add E-301E

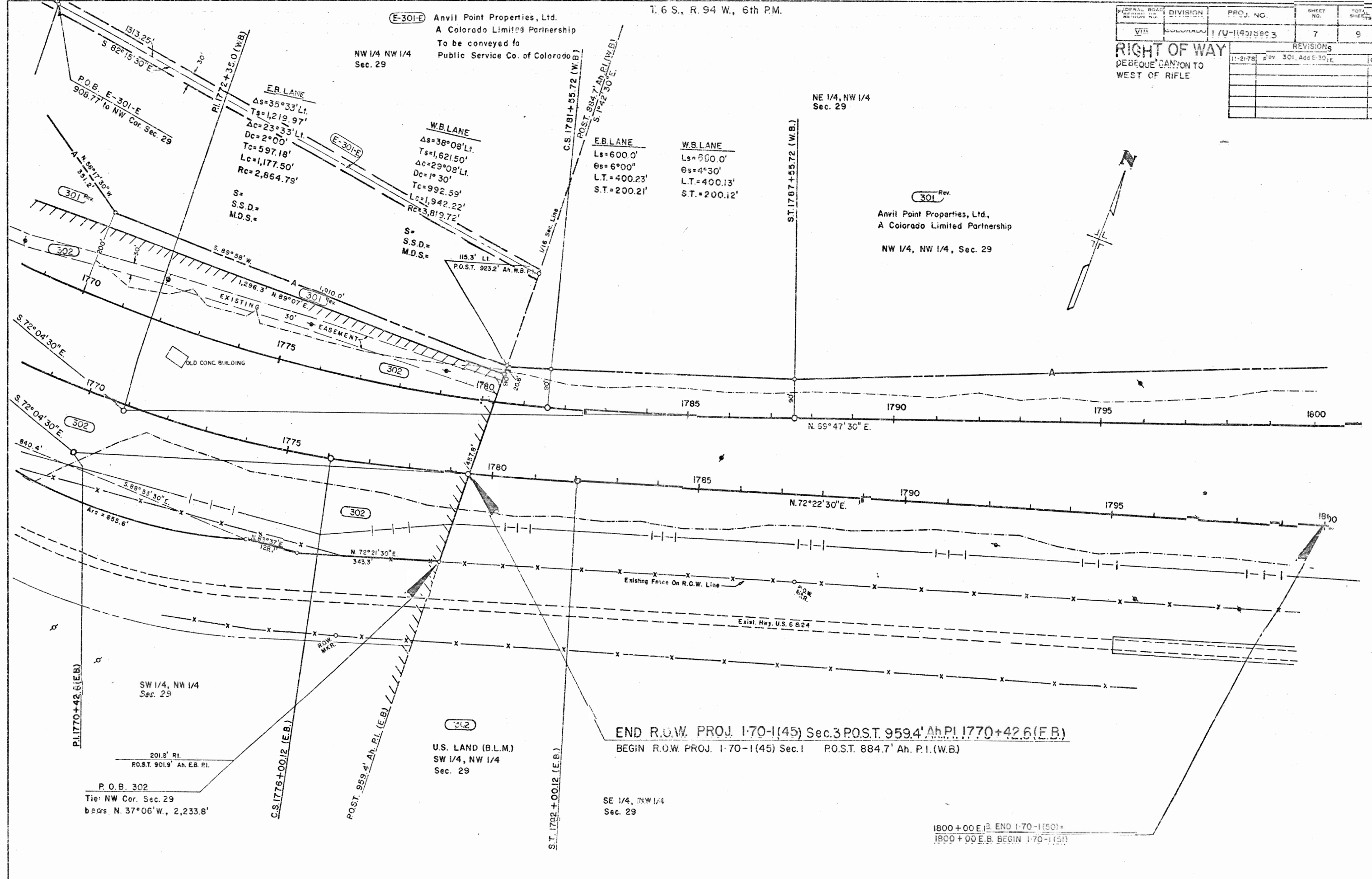
**E-301-E** Anvil Point Properties, Ltd.  
 A Colorado Limited Partnership  
 To be conveyed to  
 Public Service Co. of Colorado

NW 1/4 NW 1/4  
 Sec. 29

NE 1/4, NW 1/4  
 Sec. 29

**301 Rev.**  
 Anvil Point Properties, Ltd.,  
 A Colorado Limited Partnership  
 NW 1/4, NW 1/4, Sec. 29

**RIGHT OF WAY**  
 DEBEQUE CANYON TO  
 WEST OF RIFLE



**END R.O.W. PROJ. 170-1(45) Sec. 3 POST. 959.4' Ah. P.I. 1770+42.6 (E.B.)**  
**BEGIN R.O.W. PROJ. 170-1(45) Sec. 1 POST. 884.7' Ah. P.I. (W.B.)**

1800+00 E.B. END 170-1(50)  
 1800+00 E.B. BEGIN 170-1(51)

Note: R.O.W. previously purchased on PROJ. F-FG 091-1(4)



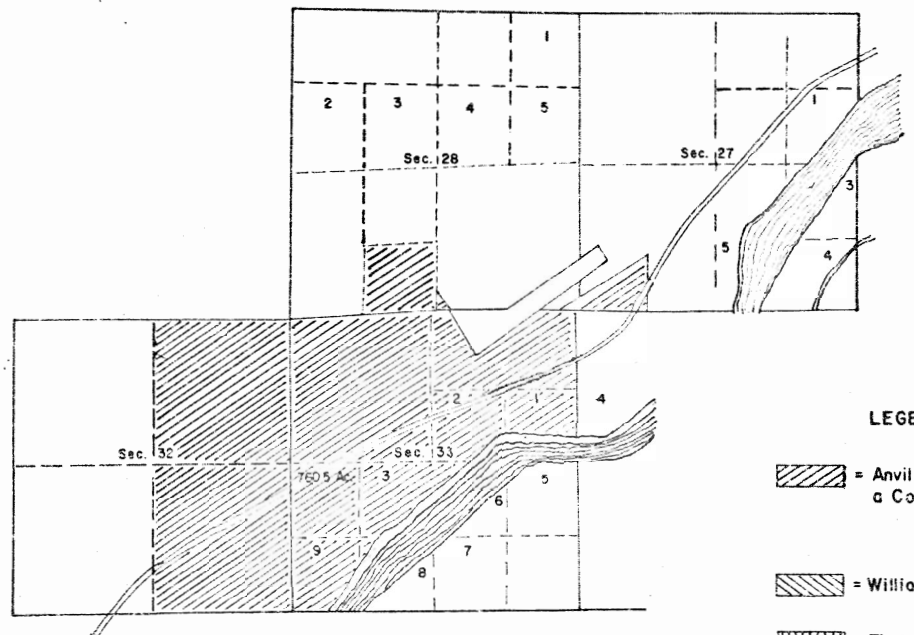
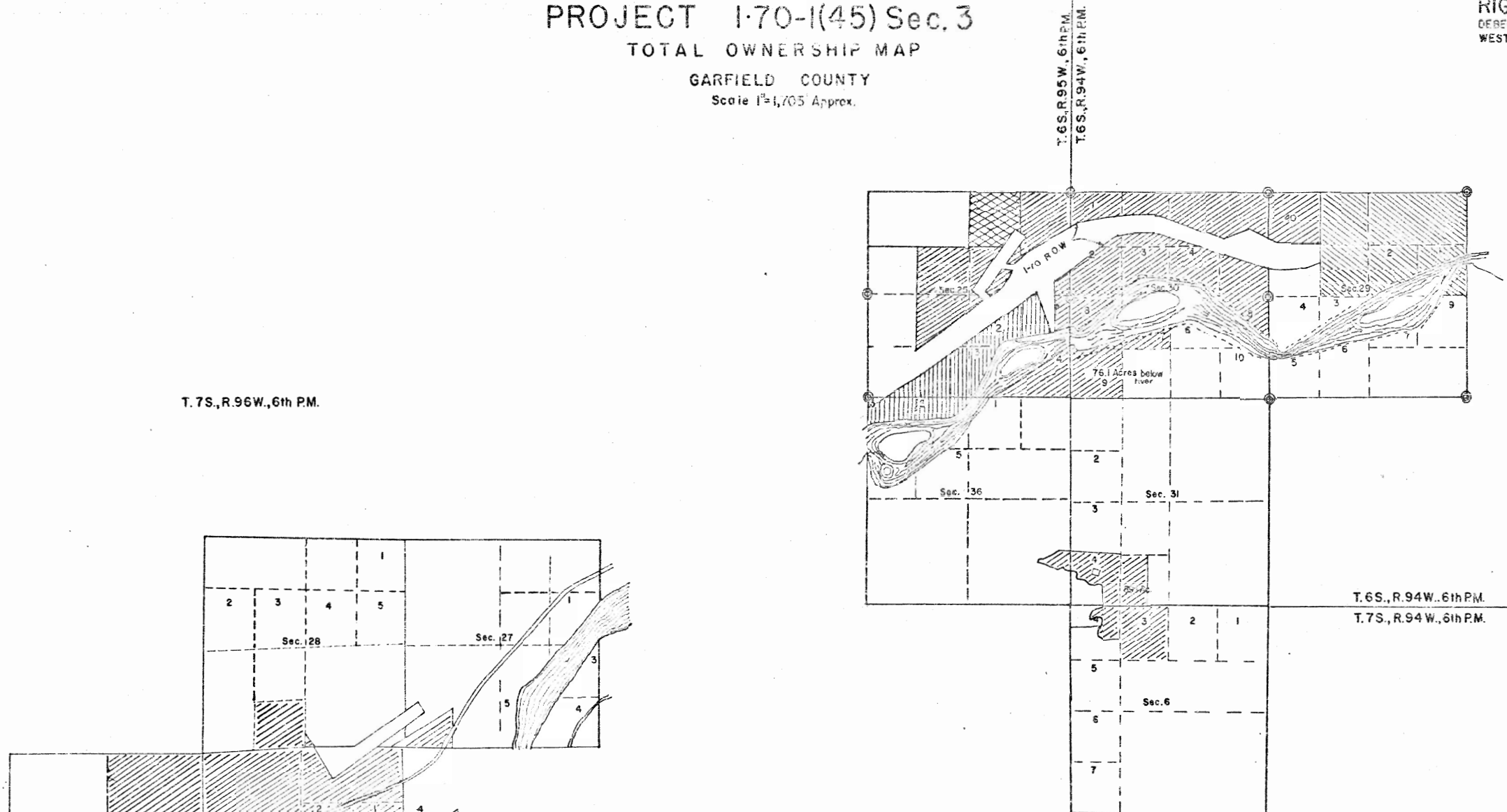
THE STATE DEPARTMENT OF HIGHWAYS  
 DIVISION OF HIGHWAYS - STATE OF COLORADO  
**PROJECT 1-70-1(45) Sec. 3**  
 TOTAL OWNERSHIP MAP  
 GARFIELD COUNTY  
 Scale 1"=1,705' Approx.

FEDERAL ROAD REGION NO.	DIVISION	PROJ. NO.	SHEET NO.	TOTAL SHEETS
VIII	COLORADO	1-70-1(45) Sec. 3	9	9

REVISIONS				
3-17-79	Add E-301 Rev. 8	1E-305	D.J.	
4-12-79	Rev. E-301 Rev. 8	7E-305, Add	D.J.	
	E-301A			
7-10-78	Add E-301B		D.J.	

**RIGHT OF WAY**  
 DEBEQUE CANYON TO  
 WEST OF RIFLE



**LEGEND**

- = Anvil Point Properties, Ltd., a Colo. Limited Partnership
- = William F. Clough & Iva M. Clough
- = First National Bank in Grand Junction, Colorado
- = U.S. LAND, B.L.M.
- = U.S. NAVAL RESERVE