

STATE DEPARTMENT OF HIGHWAYS DIVISION OF HIGHWAYS—STATE OF COLORADO

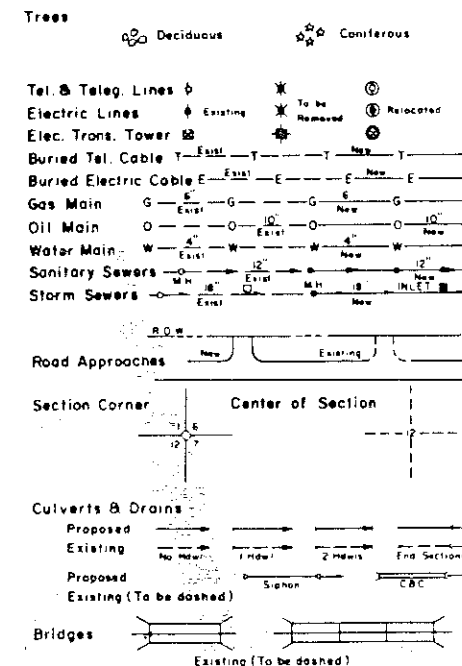
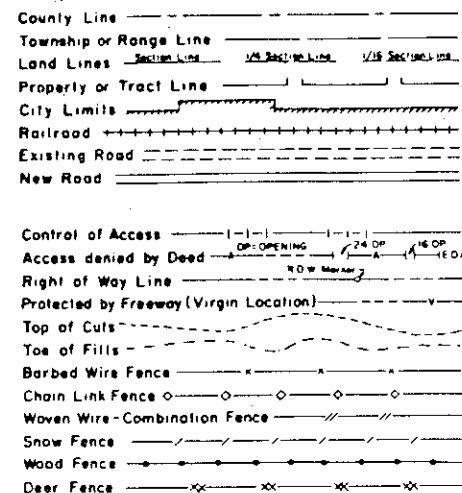
TITLE SHEET

| FEDERAL ROAD REGION NO. | DIVISION | PROJ. NO. | SHEET NO. | TOTAL SHEETS |
|-------------------------|----------|-------------|-----------|--------------|
| VIII | COLORADO | MU 0088(12) | 1 | |

| RIGHT OF WAY REVISIONS | | | |
|------------------------|---------|----------|----|
| 2/16/89 | Correct | End Sta. | D6 |
| | | | |
| | | | |
| | | | |

RIGHT OF WAY
BELLEVIEW & WINDERMERE

CONVENTIONAL SIGNS



RIGHT OF WAY PLAN OF PROPOSED FEDERAL AID PROJECT NO. MU 0088(12) STATE HIGHWAY NO. 88 ARAPAHOE COUNTY

RIGHT OF WAY

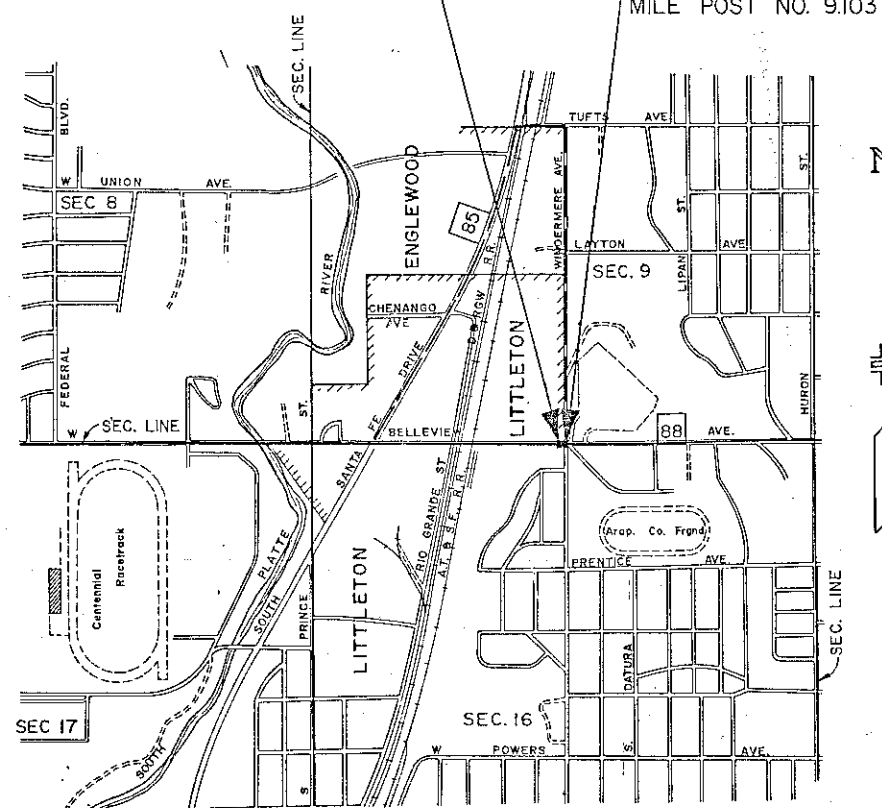
SCALE OF ORIGINAL DRAWINGS
PLAN SHEETS 1" = 20'

ROW LENGTH OF PROJECT = 0.039 miles

| SHEET NO. | INDEX OF SHEETS |
|-----------|--------------------------|
| 1 | TITLE SHEET |
| 2 | TABULATION OF PROPERTIES |
| 3 | PLAN SHEET |

STA. 27+42.00 BEGIN R.O.W. PROJECT NO. MU 0088(12)
MILE POST NO. 9.063

STA. 29+46.97 END R.O.W. PROJECT NO. MU 0088(12)
MILE POST NO. 9.103



Basis of Bearings: All bearings are based on the North line of Section 16, T.5S., R.68W., 6th P.M., being S.89° 55' 38" E.

Date: May 1988
Subaccount: 88136
District: 6 JWK

| | |
|--------------------------------------|-----------------|
| DIVISION OF HIGHWAYS | |
| APPROVED: <i>William V. Vitek</i> | 5/10/88 DATE |
| DISTRICT ENGINEER | |

| | |
|--|------|
| DEPARTMENT OF TRANSPORTATION FEDERAL HIGHWAY ADMINISTRATION | |
| APPROVED: | DATE |
| DIVISION ADMINISTRATOR | |

DISTRICT NO. 6
PRELIMINARY PLANS
SUBJECT TO CHANGES
DATE FEB 17 1989

| FEDERAL ROAD REGION NO. | DIVISION | PROJ. NO. | SHEET NO. | TOTAL SHEETS |
|-------------------------|----------|--------------|-----------|--------------|
| VII | COLORADO | MU 0088 (12) | 3 | |

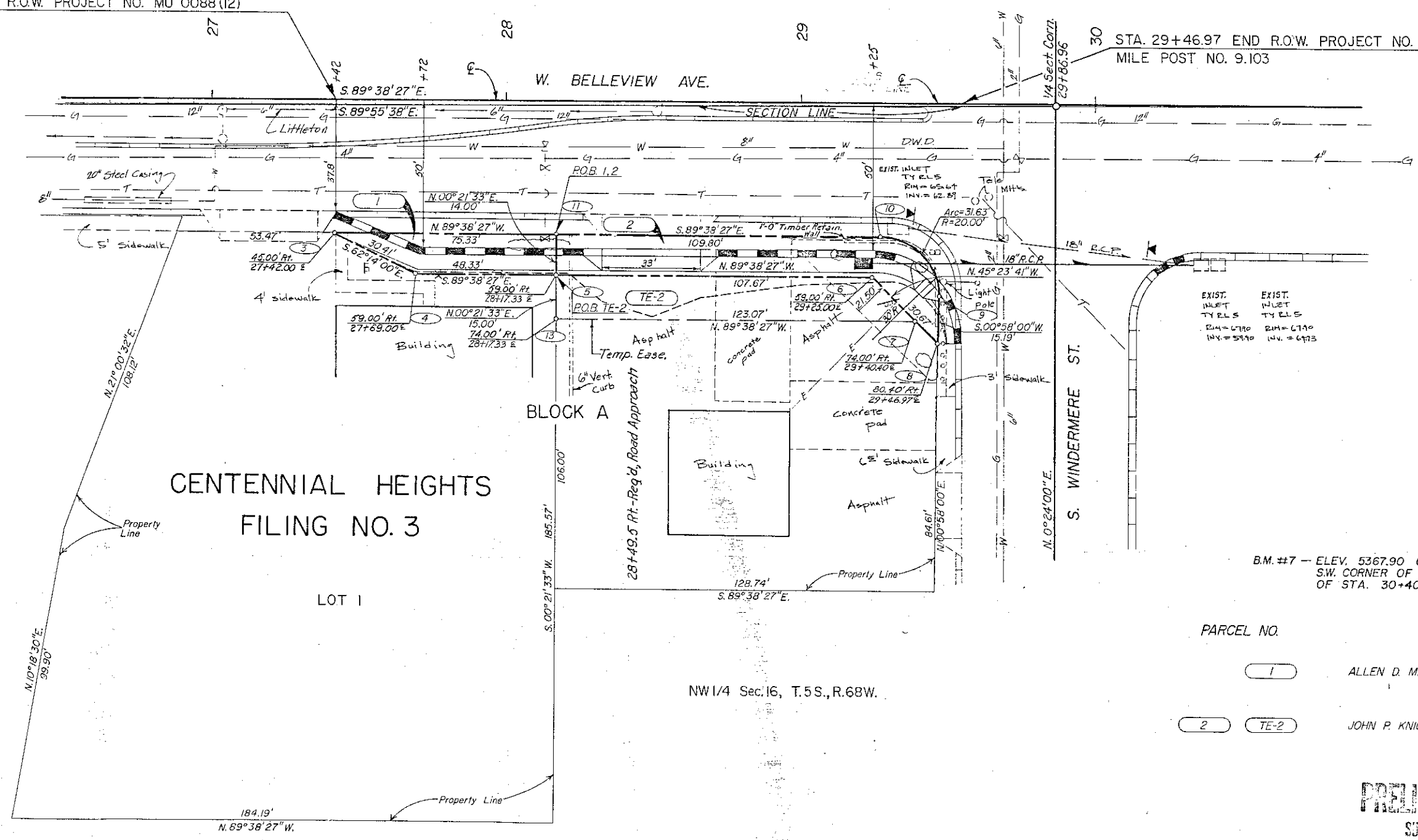
RIGHT OF WAY
BELLEVUE & WINDERMERE

| REVISIONS | | |
|-----------|-----------------------------|----|
| 2/16/89 | Correct Bearings & End Sta. | D6 |
| | | |
| | | |
| | | |
| | | |

BASIS OF BEARINGS: All bearings are based on the North line of Section 16,
T.5S., R.68W., 6th P.M., being S.89° 55' 38"E.

STA. 27+42.00 BEGIN R.O.W. PROJECT NO. MU 0088 (12)
MILE POST NO. 9.063

STA. 29+46.97 END R.O.W. PROJECT NO. MU 0088 (12)
MILE POST NO. 9.103



EXIST. INLET TY RLS
RM = 6567
INV = 62.87

EXIST. INLET TY RLS
RM = 6710
INV = 61.73

B.M. #7 - ELEV. 5367.90 CHISELED SQUARE IN
S.W. CORNER OF INLET BOX 58' RT.
OF STA. 30+40

| PARCEL NO. | OWNERS |
|------------|---------------------------------------|
| 1 | ALLEN D. MILLER and ANTHONY D. MILLER |
| 2 | JOHN P. KNIGHT |

DISTRICT NO. 6
PRELIMINARY PLANS
SUBJECT TO CHANGES
DATE FEB 17 1989