

# DEPARTMENT OF TRANSPORTATION - STATE OF COLORADO

## RIGHT OF WAY PLAN OF PROPOSED FEDERAL AID PROJECT NO. NH(CX) 70-3(199) STATE HIGHWAY NO. I-70

### CITY AND COUNTY OF DENVER SECTION 16, T. 3 S., R. 68 W. 6th P.M.

#### RIGHT OF WAY

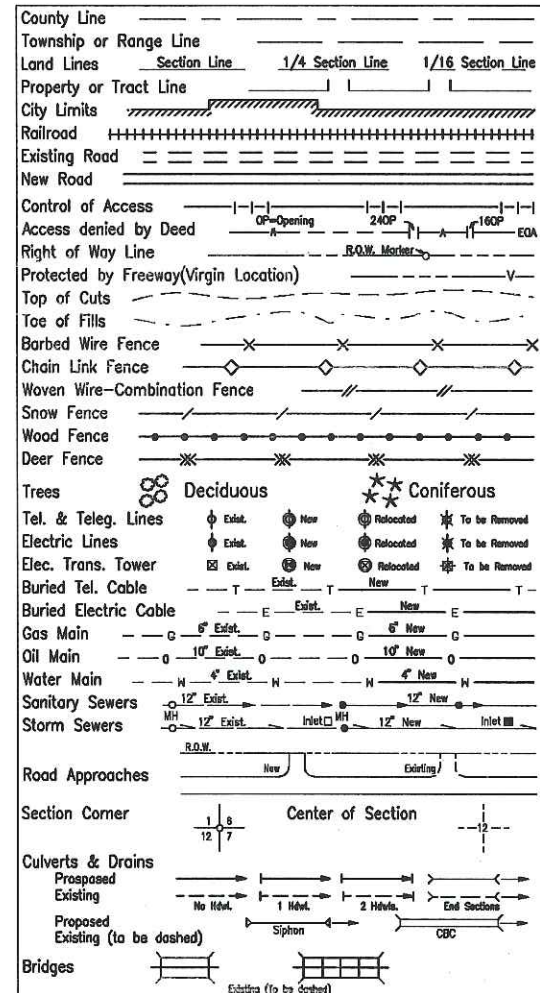
##### SCALES OF ORIGINAL DRAWINGS

PLAN SHEETS 1' = 30'  
R.O.W. LENGTH OF PROJECT IS THE  
INTERCHANGE OF PECOS & 48TH ONLY

FED. ROAD REGION	DIVISION	PROJECT NUMBER	SHEET NUMBER
VIII	COLO.	NH(CX) 70-3(199)	1
REVISIONS			

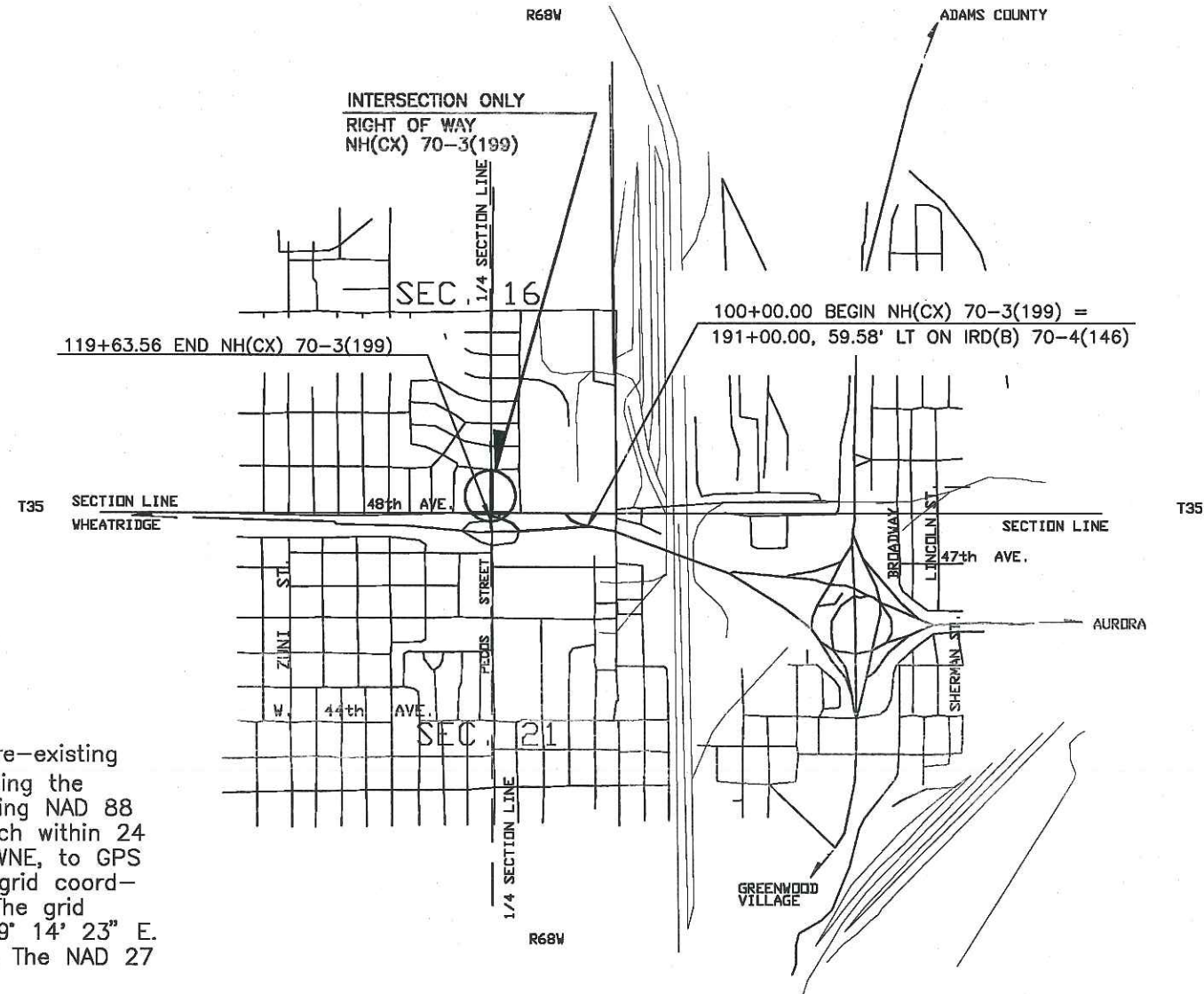
**RIGHT OF WAY**  
I-70  
PECOS @ 48 th

#### CONVENTIONAL SIGNS



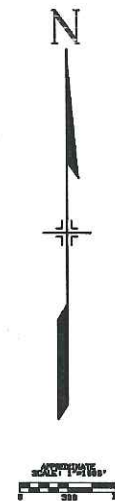
#### BASIS OF BEARINGS

The project Basis of Bearing is derived from pre-existing control as done by CDOT preliminary survey crew using the NAD 27 datum. This control loop orientation comparing NAD 88 (1993) control points to NAD 27 control points match within 24 arc seconds. The bearing from GPS point 8020, TOWNE, to GPS point 8009, SATO, is N. 89° 13' 59" E. in NAD 27 grid coordinates. This is used on the CDOT control diagram. The grid bearing of the above mentioned GPS points is N. 89° 14' 23" E. on the NAD 83 (1991) state plane coordinate base. The NAD 27 control monuments have been destroyed.



#### INDEX OF SHEETS

- 1 TITLE SHEET
- 2 TABULATION OF PROPERTIES SHEET
- 3 CONTROL AND MONUMENTATION SHEET
- 4 PLAN SHEETS



DEPARTMENT OF TRANSPORTATION FEDERAL HIGHWAY ADMINISTRATION	
AUTHORIZED _____	DATE _____
DIVISION ADMINISTRATOR	

04/22/94 08:27:30 D:\PECOS\ PECSH1 92961 REC.6-RW/JDS

DATE: 8/93  
Subaccount: 92961  
District Six Autocad  
1"=100' FOR PLOTTING

FED. ROAD REGION	DIVISION	PROJ. NO.	SHEET NO.
VIII	COLO.	NH(CX) 70-3(199)	2

R.O.W. TABULATION OF PROPERTIES IN CITY & COUNTY OF DENVER

S.H. NO. I-70

RIGHT OF WAY  
I-70  
PECOS @ 48 th

REVISIONS

11/08/94 Rev. 3, 4, TE-3, & TE-4; Add PE-3, R6

PARCEL NO.	OWNER	ADDRESS	LOCATION T.3S.,R.68W.,6th P.M.	AREA IN SQ. FT.				PARCEL NO.	REMARKS
				PARCEL	TO BE ACQUIRED	REMAINDER			
						LEFT	RIGHT		
2	MEADS INVESTMENT GROUP	5535 2nd Ave. Denver, CO 80220	BLOCK 5, CHAFFEE PARK HEIGHTS	2,601	2,601	126,249	—	2	To CDOT BY WD 9600075658 6/04/96 DENVER COUNTY
	Site Add:	4801-55 Pecos and 1735-55 W. 48th Ave.	SW 1/4 SEC. 16						
TE-2	SAME AS PARCEL 2			5,476	—	—	—	TE-2	For curbing & repaving of a parking lot.
3	JOHN D. PAPPAS AND Rev. DENO PAPPAS, JR.	6533 S. Steel Street Littleton, CO 80121	Lot 6, Block 8, CHAFFEE PARK	2,618	2,618	—	61,411	3	Rev.
	Site Add:	4806-36 Pecos and 1501-55 W. 48th Ave.	HEIGHTS 2nd FILING SE 1/4 SEC. 16						
PE-3	SAME AS PARCEL 3 Rev.			28	28	—	—	PE-3	For constr. & maint. of a sidewalk.
TE-3	SAME AS PARCEL 3 Rev. Rev.			7,567	—	—	—	TE-3	For curbing & repaving of a parking lot. Rev.
4	SAFEWAY STORES 45, Rev. INC., a Delaware Corporation	14406 E. Evans Ave. Suite 200 Aurora, CO 80014	Lots 1 and 6, Blk. 8, CHAFFEE PARK	2,251	2,251	—	91,348	4	To CDOT BY WD 9500143729 11/17/95 DENVER COUNTY
	Site Add:	4860 Pecos St.	HEIGHTS 2nd FILING SE 1/4 SEC. 16						
TE-4	SAME AS PARCEL 4 Rev. Rev.			8,443	—	—	—	TE-4	For curbing & repaving of a parking lot. Rev.

11/08/94 09:20:02 D:\PECOS\PECSHT2 92961 REG-6-ROW/JDS

SURVEY CONTROL POINT TABULATION

TOWNSHIP 3 SOUTH, RANGE 68 WEST, OF THE 6th P.M.

Table with 4 columns: PNT, NORTHING, EASTING, DESCRIPTION OF MONUMENTS. Lists points 18 through 9021 with their coordinates and monument descriptions.

TABULATION OF R.O.W. TYPE 1 MONUMENTS TO BE SET

Table with 3 columns: PNT, NORTHING, EASTING. Lists points 61 through 254 with their coordinates.

CONTROL AND MONUMENTATION SHEET

SECTION 16, T. 3 S., R. 68 W., 6th P.M. C.D.O.T. PROJECT NO. NH(CX) 70-3(199) CITY AND COUNTY OF DENVER

TABULATION OF ALIQUOT CORNERS TO BE SET

Table with 4 columns: PNT, NORTHING, EASTING, DESCRIPTION OF MONUMENTS. Lists point 56 with its coordinates and description.

RIGHT OF WAY <1> I-70 PECOS @ 48th

Table with 4 columns: FED. ROAD REGION, DIMSION, PROJECT NUMBER, SHEET NUMBER. Includes revision table below.

QUANTITY OF MONUMENTS TO BE SET

Table with 2 main columns: CAP TYPE, MONUMENT TYPE. Sub-columns for monument types 1 through 5. Shows quantities for Reference, Right of Way, Control, Aliquot Corner, and Witness Post.

SURVEYOR CERTIFICATE (FIELD)

Control Survey and Monumentation was done under my supervision and checking.

NAME [Signature] P.L.S. NO. 22571

DATE Feb. 28, 1995

SURVEYOR CERTIFICATE (OFFICE)

R.O.W. Plans and Legal Descriptions were prepared under my supervision and checking.

NAME [Signature] P.L.S. NO. 29033

DATE 2-28-95

SURVEYOR CERTIFICATE (FIELD)

Right of Way Monumentation was done under my supervision and checking.

NAME \_\_\_\_\_ P.L.S. NO. \_\_\_\_\_

DATE \_\_\_\_\_

GENERAL NOTES

- 1. This Right of Way plan is not a complete boundary survey... 2. Survey Control Points set with a higher degree of accuracy... 3. NOTICE: According to Colorado law you must commence any legal action... 4. All R.O.W. Markers set from survey control points... 5. No warranty is implied... 6. All coordinates listed are project coordinates only... 7. Field survey control precision... 8. Memorandums of Ownership supplied by: CDOT Region 6 Right of Way agents... 9. The project Basis of Bearing is derived from pre-existing control... 10. The contract surveyor is to contact Reg. 6 R.O.W. with monument order 14 days prior to pick-up of all monuments required for the project.

LEGEND

- GPS POINTS
SECTION CORNERS
QUARTER CORNERS
1/16 th CORNERS
CONTROL POINTS
PROPERTY PINS
QUARTER CORNER REFERENCE MONUMENT
1/16 th LINES
1/4 LINES
SECTION LINES
SIDE SHOTS
TRAVERSE LINES
CTRL. PNT. # AS STAMPED ON MONUMENT
COMPUTER #
ALIQUOT CORNERS POINT #

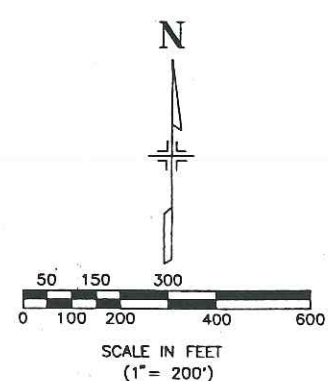
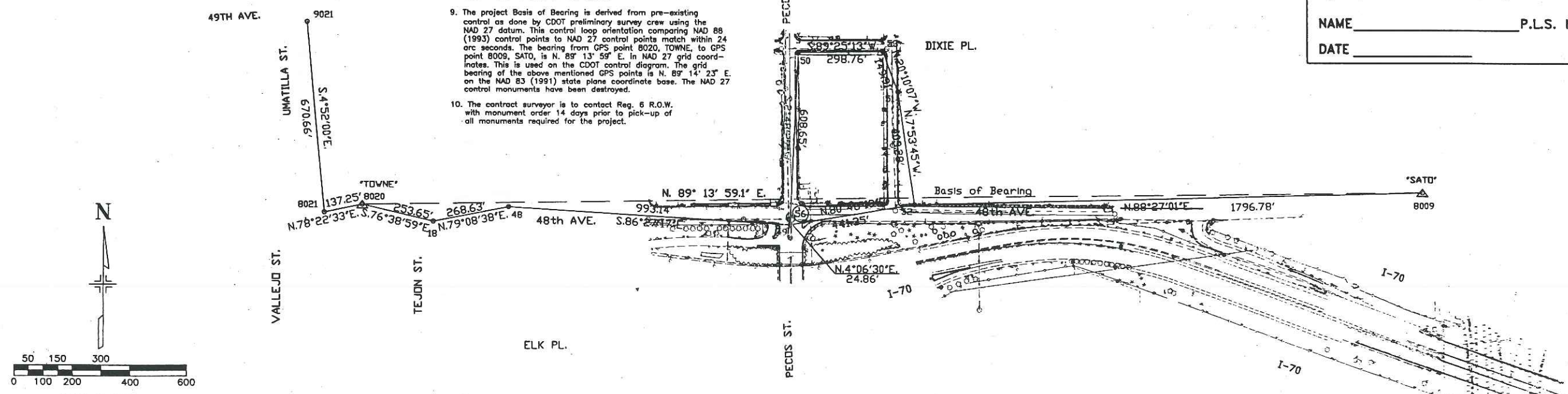


Table defining monument types: TYPE 1 MONUMENT-CDOH MONUMENT(3-1/4" CAP, 3/4" ROD), TYPE 1A MONUMENT-CDOH MONUMENT(3-1/4" CAP, 3/4" ROD IN A MONUMENT BOX), TYPE 3A MONUMENT-CDOH MONUMENT(3-1/4" CAP, 2-3/8" PIPE IN A MONUMENT BOX)

DISTRICT NO. 6 PRELIMINARY PLANS SUBJECT TO CHANGES DATE MAR 01 1995

FED. ROAD REGION	DIVISION	PROJ. NO.	SHEET NO.
VIII	COLD.	NH(CX) 70-3(199)	4
REVISION			
11/08/94	Rev. 3, 4, TE-3, TE-4j		
	Add PE-3.		R6

CHAFFEE PARK

CHAFFEE PARK

HEIGHTS

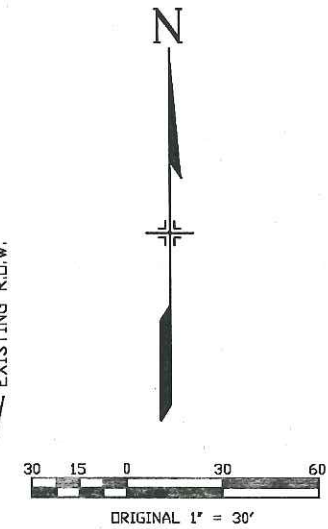
HEIGHTS 2ND FILING

SW 1/4 SECTION 16  
T.3S,R.68W,6th P.M.

T.P.D.B. 3 Rev, 4 Rev,  
TE-3 Rev. & TE-4 Rev.

MEAD INVESTMENT GROUP

JOHN D. PAPPAS AND  
DENO PAPPAS, JR.

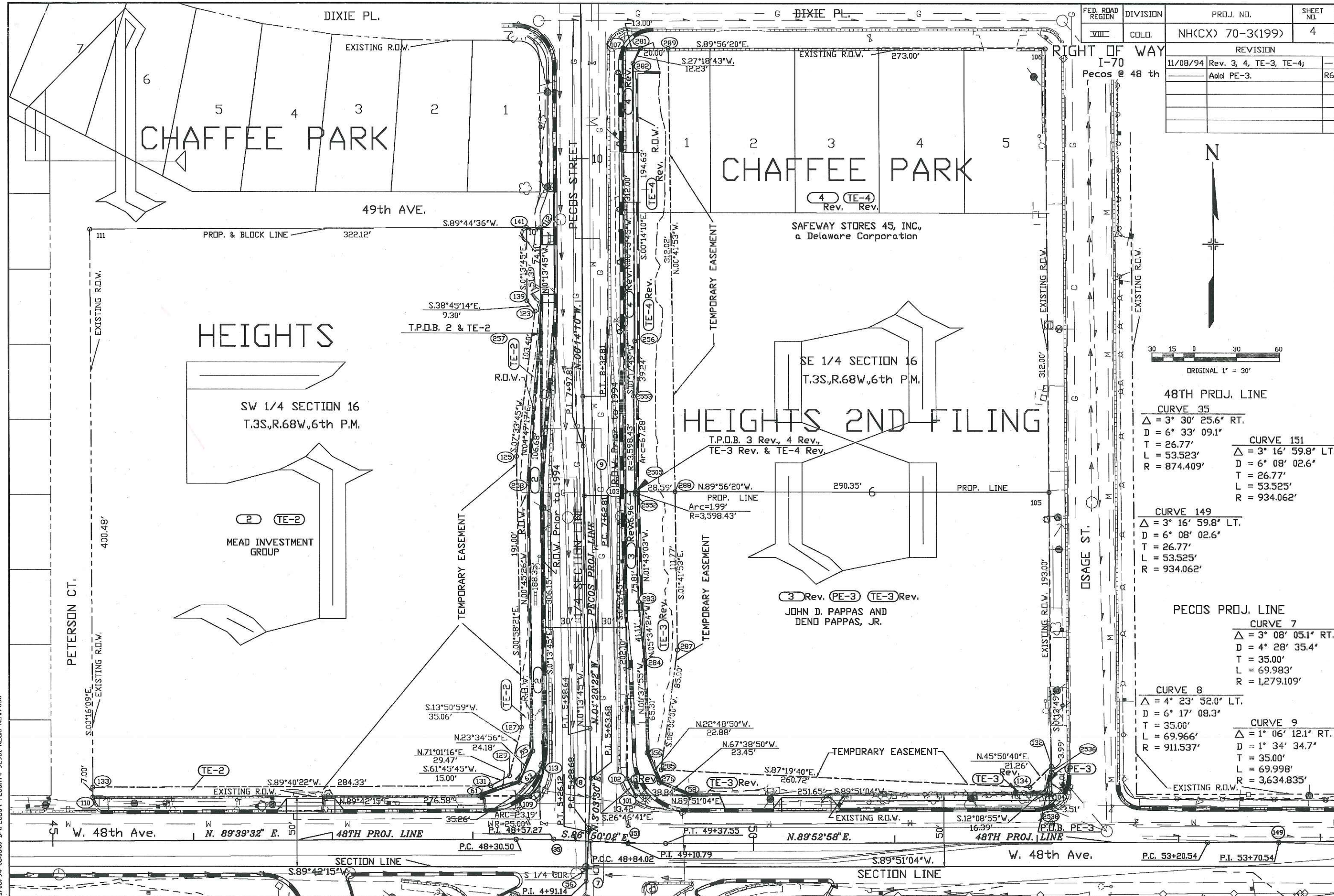


48TH PROJ. LINE

CURVE 35	CURVE 151
$\Delta = 3^\circ 30' 25.6''$ RT.	$\Delta = 3^\circ 16' 59.8''$ LT.
D = $6^\circ 33' 09.1''$	D = $6^\circ 08' 02.6''$
T = 26.77'	T = 26.77'
L = 53.523'	L = 53.525'
R = 874.409'	R = 934.062'

PECOS PROJ. LINE

CURVE 7	CURVE 8	CURVE 9
$\Delta = 3^\circ 08' 05.1''$ RT.	$\Delta = 4^\circ 23' 52.0''$ LT.	$\Delta = 1^\circ 06' 12.1''$ RT.
D = $4^\circ 28' 35.4''$	D = $6^\circ 17' 08.3''$	D = $1^\circ 34' 34.7''$
T = 35.00'	T = 35.00'	T = 35.00'
L = 69.983'	L = 69.966'	L = 69.998'
R = 1,279.109'	R = 911.537'	R = 3,634.835'



11/08/94 08:03:00 D:\PECOS\1 PECSHT4 92961 REC66-RD/V/JDS